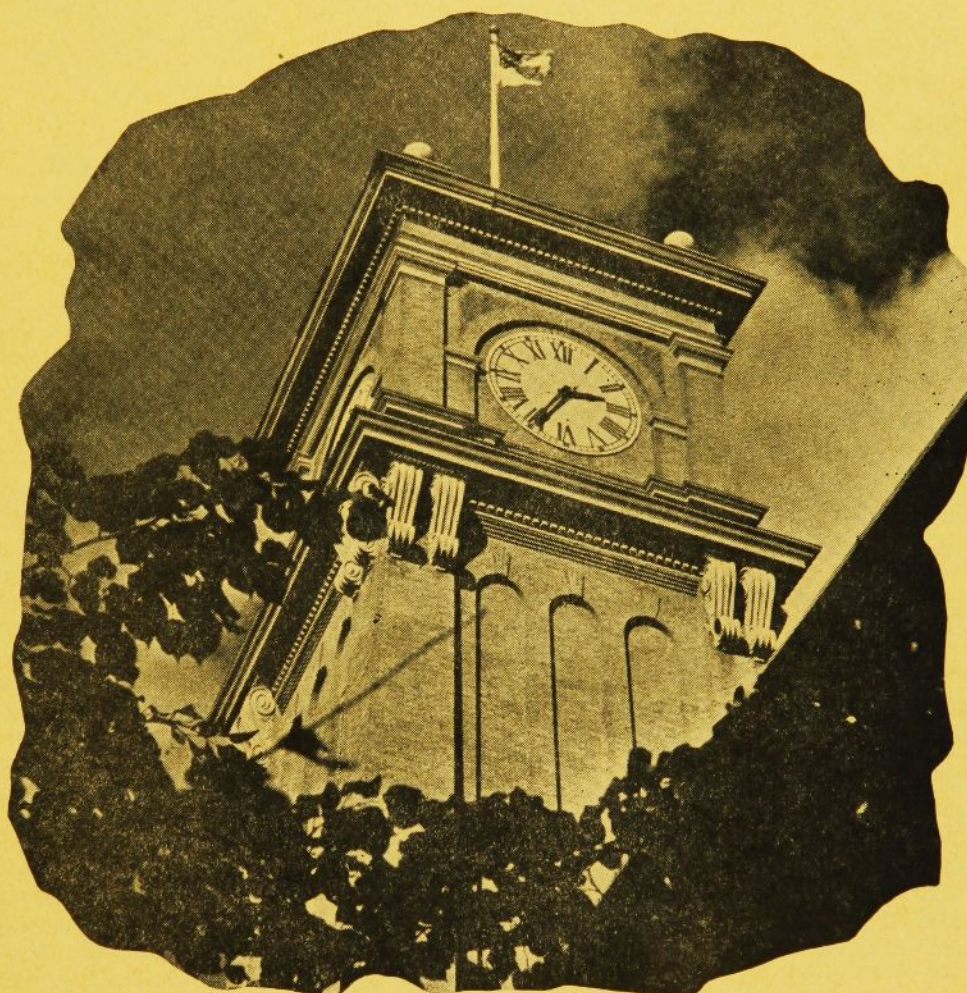


TORCH AND TREFOIL

OF ALPHA PHI OMEGA



BRYAN HALL CLOCK TOWER, WASHINGTON STATE COLLEGE

This famous landmark rises high above WSC's beautiful campus where Alpha Xi Chapter conducts an excellent service program.

VOLUME 16 - NUMBER 6

Annual Service Issue 1941

National President's Message to All Men of Alpha Phi Omega

My Dear Brothers:

Another fall, another year for Alpha Phi Omega, and another opportunity to meet the challenge of Friendship, Leadership, and Service!

This year the pattern, which usually can be made to fall into place like a jigsaw puzzle, is pretty much awry. The world is bloodstained. Men are fighting for life as well as for a cause. Many of our rock-bound principles have had to yield to grim necessity. Every major thought and act of our lives is gravely related to the vast national and world pattern. The thing we are trying to do in Alpha Phi Omega becomes even more challenging, more urgently needed, more vitally important. When the night is blackest, a light in the darkness shows more brilliantly than ever. When life patterns are being torn asunder, ideals sustained become even more vivid. When the going is rough, progress is the more noteworthy.

In the midst of today's turmoil, every act that we do in the name of Alpha Phi Omega is an act in defense of America. Every fulfillment of friendship that we make is a weapon against those who would instead turn man against his brother man. Every task of leadership on your part is a stone in the path of America's enemies. Every bit of service rendered is an act that will help insure America's continuance in the course of her forefathers.

It's worth the effort, isn't it?

Our work this fall won't be easy. In some chapters fully fifty per cent of the men of Alpha Phi Omega who would normally have returned to the campus are now engaged in defense industries or are in the ranks of Uncle Sam's forces. Ours is the task of carrying on without them. They're actively in defense work. So are we. Let's give little time to bemoaning our loss and get busy on the job to be done. Our program needs to be greater than ever before, our emphasis upon Americanism stronger, our campus awareness increased many times over. Let's get to work.

We'll need more men—let's get them. There's not a red-blooded

man in America who will refuse the opportunity to do something constructive with your chapter, given the right picture of our purpose. Men may be scarcer in numbers, but enlisting them is going to be immeasurably easier than ever before in our brief history. In this day when patriotism and manhood are sorely needed Alpha Phi Omega comes into its own.

Leave no stone unturned to contact and pledge every man who has at sometime participated in the Scouting program, thus sharing our common background of patriotism, of brotherhood, of leadership in service. He is needed in your ranks. Only through manpower is there any service power.

Give consideration to your chapter program. Does it challenge your membership? Is it designed for real service power? Are you giving a high calibre performance, worthy of our nation and our fraternity? Will your accomplishments justify your existence? Are you building conscious Americanism into your program? Are you developing fraternalism in the spirit of service? Does your chapter program help your men accomplish the things they want to do and be? If not, it must.

And it isn't all in the chapter program, brother member. Much depends on you individually. This is an unalterable law of human life.

American democracy was founded by a group of earnest Pilgrims who landed at Plymouth Rock and prayerfully established a self-governing people. This is our heritage today—yet this democracy has not been preserved for us by a process of heritage alone. Every new generation has had to do its part in maintaining it inviolate. Democracy springs from the individual heart, then and now, and every citizen who makes a contribution to its perpetuation must cultivate within himself a stronghold of democracy.

Likewise with Alpha Phi Omega, the brotherhood of "live and help live." Because of its idealism, its perpetuation and effectiveness lie with the individual members. Brother member, you are a part of the

service power of Alpha Phi Omega. Your personal attitude toward our philosophy causes Alpha Phi Omega to grow or die. Your intelligent application of whatever leadership opportunities are yours builds a fraternity vigorous in achievement. Your personal coordination with the chapter program creates strength and service power for the chapter. Your passion for a life pattern which will give you more effective living is a part of the spirit and power of Alpha Phi Omega. **You** are Alpha Phi Omega. **You** make it active. **You** give it power. But only if **YOU** fulfill the opportunity presented.

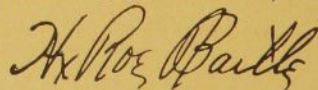
Alpha Phi Omega challenges you to serve worthily as individual members, to give vast time and thought to your chapter program, to be a vigorous part of our brotherhood.

How many of us discount the great usefulness of our advisors! How many potentially excellent chapters restrict their own success by not coordinating their own program with that of the campus or community! How many chapters fail to reach their full measure of activity because activity is vested in too small a working group! How many do not realize that any man who is a member of Alpha Phi Omega is in the fraternity because he believes in its fundamental principles, and so believing, will do the tasks required of him if they have worth and value! We need to study Alpha Phi Omega, to grow more skillful in our leadership, more sincere in our membership, more intelligent in our service.

A new year opens. I charge you, my brothers, to realize that Alpha Phi Omega has a supreme opportunity to grow and serve and be effective. This is Alpha Phi Omega's challenging moment to serve America.

God forgive us if we do less than our best.

Faithfully your brother,



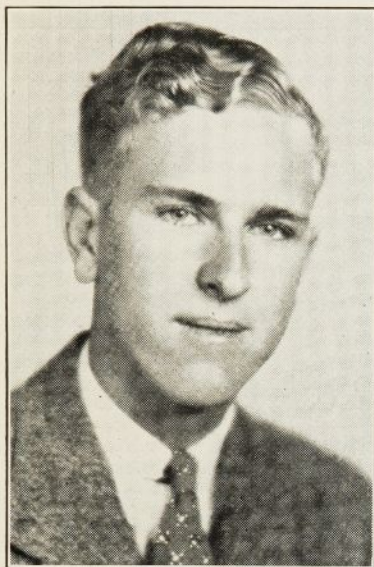
National President.

TORCH AND TREFOIL

The Magazine of Alpha Phi Omega, National Service Fraternity

GUEST EDITORIALS

BY A CHAPTER PRESIDENT, A UNIVERSITY DEAN AND A SCOUT OFFICIAL



Ralph E. Frede

*President, Alpha Rho Chapter
University of Texas*

WHY I BELIEVE IN ALPHA PHI OMEGA

By Ralph E. Frede

What is it that causes fifty or sixty boys to rise earlier than usual and work diligently throughout a day and into the night registering men for selective service, following this the very next day by serving at election polls, tediously checking names in a master student directory, and counting votes till early in the morning of the third—on and on until the job is done to everyone's satisfaction?

With no personal gain in either of these wearisome assignments, the compelling force is a desire to be of service.

I believe in Alpha Phi Omega because of the type of membership it attracts—men who have the vision and courage to be leaders, defending what they believe is right, and filling the slots which are left vacant for them.

(Continued on Page 4)

SERVICE ON YOUR CAMPUS

By Dean Zens L. Smith

In rifle-fire training there is an old truism to the effect that if sights are set for the wrong range a group of poor shots will make a better score than will a group of experts. Judging the range correctly is the *sine qua non* for hitting the target. There is no snobbery in saying that college and university men may fairly be considered as, for the most part, a group of potential if not actual experts. They should be able to hit the target of happy and successful living, provided their sights are set for the proper range.

There are two fundamentally different theories as to the guiding principle, or correct range, for attaining that success which we all hope to achieve in life. One is sharply summed up in the blunt slogan, "Anything to win"; it is epitomized in O. Henry's story of the western bad man who shot his pal when they were both in a desperate situation with only one horse between them, because "Bolivar

(Continued on Page 4)



Dean Zens L. Smith

*Senior Faculty Advisor, Gamma Sigma Chapter
University of Chicago*



Dr. Ray O. Wyland

*National Director of Education and
Relationships, Boy Scouts of
America*

SERVICE IN YOUR COMMUNITY

By Dr. Ray O. Wyland

The phenomenal success of Alpha Phi Omega in building up a standing unlike any other fraternity on a hundred college campuses throughout the country is a direct result of its program of service. Leadership and friendship among men of Alpha Phi Omega are natural corollaries of this program of service.

The Manual of Service of Alpha Phi Omega has no parallel among college fraternities. The four-fold program of service to the student body and faculty, service to youth and community, service to members of the fraternity, and service as participating citizens has evolved out of the experience of each local chapter, each taking advantage of conditions on the college campus and in the college community.

Every chapter has been alert to

(Continued on Page 4)

GUEST EDITORIALS

WHY I BELIEVE IN ALPHA
PHI OMEGA

By Ralph E. Frede

(Continued from Page 3)

I have formed the opinion that not riches, social prominence, power, nor any other like possession for which some men grapple, will make a person happy. But his constant effort to serve God, country, and others, all the while keeping himself physically strong, mentally awake, and morally straight will bring lasting satisfaction.

Thus brothers of Alpha Phi Omega are willing to give time, energy, and personal possessions to make their program successful, and while doing so, in banishing selfishness, they find happiness and friendship.

I believe in Alpha Phi Omega because it demonstrates the ideals which were just expressed. How did Alpha Phi Omega on the campus of The University of Texas reach the present position of high esteem and respect which it now commands? Its membership was willing to take the lesser, the menial projects, those which carried no praising publicity. The members sought, organized, and carried them out effectively. By proving themselves capable, they gradually assumed more beneficial projects and founded a lasting place for their fraternity on their campus. It was not publicity which raised the fraternity in public esteem, but jobs well done in an altruistic manner.

By doing his part while in school each member leaves behind him a part of his life which he should always remember with pleasure.

Another reason why I believe in my fraternity as one of outstanding and effective leadership, friendship, and service is because Alpha Phi Omega works to make brotherly co-operation the outstanding existent factor.

I believe fundamentally in man's wish to do some good to justify his existence. I believe in the attainment of an ultimate goal—a world in which we strive to perfect society, and we perfect ourselves in helping others.

"He who serves his fellows, is, of all his fellows, greatest."

SERVICE ON YOUR CAMPUS

By Dean Zens L. Smith

(Continued from Page 3)

can't carry double." The other has been the foundation of every true approach man has made to religion in his long struggle to rise from brutishness to something higher; it is portrayed in action in the story of the good Samaritan and is forever crystalized in the Golden Rule. When Bolivar cannot carry double, I will walk that my weaker, needier companion may ride.

Today, as never before, this guiding principle is being called into question by the self-centered logic of the dictator. There is a type of mind that sees nothing but weakness in a theory of social living that deters the strong from brutishly grasping all that his strength is capable of taking and holding. To such a mind the principle of leadership through friendship and service results in nothing but a stupid waste of the leader's time. Woefully enough, this view-point is not the exclusive property of the totalitarian states, we can find it here in America, we can find it in our own colleges and universities.

Here is the glorious responsibility of Alpha Phi Omega. On nearly a hundred campuses in the United States, the men of Alpha Phi Omega have the pleasant privilege of demonstrating that the service ideal works; that the greater good of humanity, of each and everyone of us, comes not through selfish aggrandizement, not through grasping power for the sake of power, but through the guerdon of leadership which becomes the rightful and happy possession of that man whose friendship for his fellowmen flowers in selfless service.

THIS ISSUE

This is the second annual service issue of the Torch and Trefoil. It presents a record of the service achievements of all Alpha Phi Omega Chapters for the school year 1940-41 . . . and more than that, its articles, pictures and editorials present a challenge to intensify and increase the service activities of every chapter.

SERVICE IN YOUR COMMUNITY

By Dr. Ray O. Wyland

(Continued from Page 3)

analyze the needs of the local community and to develop its own service projects. These projects do not come ready made to be superimposed upon all college campuses. They are indigenous to campus and community life.

It is noteworthy that community service has found expression in more varied forms than any other phase of our service program. This community service should not exclude an intensive program of service on the college campus, for the fraternity lives on the campus and should be a living force in the activities of the student body.

The community service program is very effective training in useful citizenship. The college community often provides more opportunities for civic service than will be found on the campus. Scout-trained men will be inclined to seek first the opportunity to render service in the local Scout Council, but this is only one of many available community contacts, such as local hospitals, Red Cross campaigns, Community Chest service, Thanksgiving and Christmas baskets, boys' clubs, "Get-out-the-Vote" campaigns, religious programs, settlement houses and convention service.

Nearly every fraternity and service club has some program of community service or charity work. Alpha Phi Omega specializes in this field. Every man of Alpha Phi Omega should be familiar with the Manual of Service and all four phases of the service program. Let Alpha Phi Omega live not because of its devotion to itself, but because it loses itself in service.

TORCH and TREFOIL

Annual Service Issue
September, 1941

Issued regularly eight times a year in September, October, November, December, February, March, April and May.

Subscription price \$1.00 a year.

Entered as second class matter February 5, 1938 at the post office at Kansas City, Mo., under act of March 3, 1879.

Office of Publication
407 Land Bank Bldg.
Kansas City, Missouri

TWELVE NEW CHAPTERS INSTALLED IN 1940-41

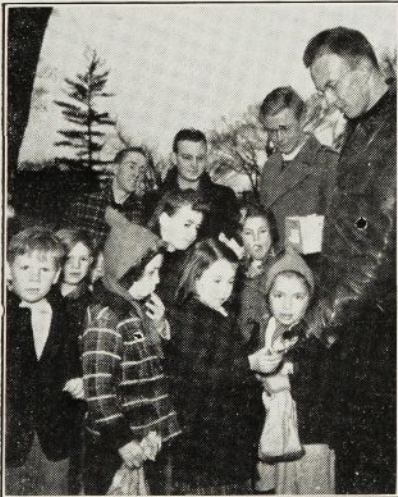
New Alpha Phi Omega chapters in twelve colleges and universities were added to the official roster of the fraternity last year . . . a very significant record of growth and extension. The new chapters are:

Gamma Theta, University of Colorado
Gamma Lambda, Clemson College
Gamma Iota, Brooklyn College
Gamma Nu, University of Idaho
Gamma Xi, Rockhurst College
Gamma Omicron, Queens College
Gamma Pi, University of Michigan
Gamma Sigma, University of Chicago
Gamma Tau, Louisiana Polytechnic Institute
Gamma Upsilon, Tulane University
Gamma Phi, Western State Teachers College
Gamma Chi, Howard College.

Full news of the installations of Gamma Theta, Gamma Iota and Gamma Nu chapters, which took place in May and June will appear in the October issue of the Torch and Trefoil.

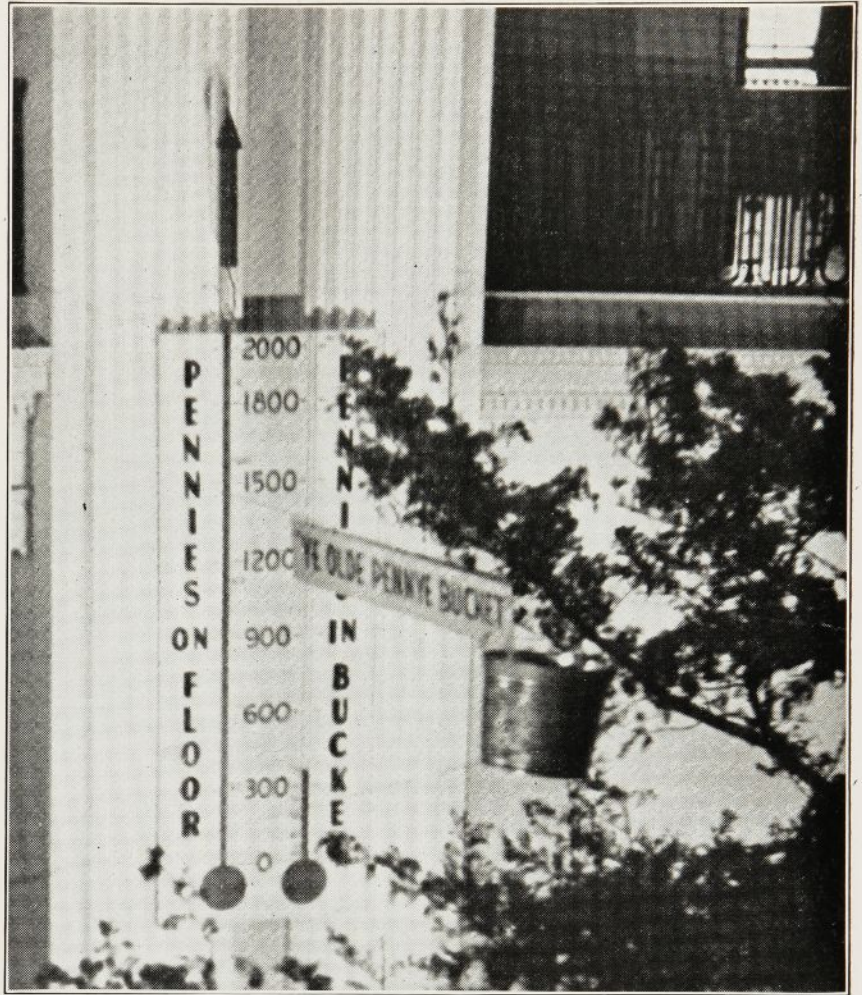
In the establishment of these new chapters, much important service was rendered by other chapters nearby. The new school year of 1941-42 opens new opportunities to extend the services of Alpha Phi Omega to more campuses.

EASTER FUN AT THE UNIVERSITY OF KANSAS



Each spring, the less-chance kiddies of Lawrence, Kansas, are the guests of Lambda Chapter at a rollicking Easter egg hunt. This interesting scene from last year's party shows one of the prize winners receiving her award. Members of the chapter in the background are, left to right, Brothers Robert Hull, George Bonebrake, Gordon McDonald and Stanley Clark.

"YE OLDE PENNYE BUCKET" AT SOUTHERN METHODIST UNIVERSITY



Four years ago this bucket was hung for the first time in the rotunda of Dallas Hall at Southern Methodist University. It has since appeared each year just before the Christmas holidays as a symbol of Alpha Omicron Chapter's aid to needy families. From the balcony above students pitch pennies at the bucket and the results are recorded on two thermometers, one for those which hit the bucket and the other for those which land on the floor. Hit or miss, all pennies are accumulated in the chapter's fund to buy foodstuffs to help give a happy Christmas for families which would otherwise be without adequate provisions.

On the floor below stands a huge Christmas tree placed there by Alpha Omicron Chapter, and students and faculty are given an opportunity to place gifts of varying kinds in an enclosure around the tree. All gifts received are properly classified and distributed.

The penny bucket idea is also now used annually in Lambda Chapter, University of Kansas; Alpha Eta Chapter, University of Kansas City; and Gamma Omicron Chapter, Queens College.

OTHER CHRISTMAS SERVICE IN TWENTY CHAPTERS ALPHA PHI CHAPTER AIDS FORTY FAMILIES

On twenty campuses last winter, Alpha Phi Omega chapters rendered Christmas service in various capacities. Particularly outstanding in this service was Alpha Phi Chapter at Washington University where through chapter sponsorship forty families of St. Louis were aided. By taking the lead in a movement among other campus organizations, Alpha Phi Chapter secured the cooperation of the social fraternities and other societies and clubs to provide forty baskets for distribution to needy families. This is a most commendable example of how Alpha Phi Omega can rally the support of other organizations for a worthy cause.

QUOTATION OF THE YEAR

(Made at the 1940 National Convention)

We began to **practice fraternalism** and our chapter flourished.

Lewis Stern, Vice-President
Gamma Zeta Chapter, Georgia Tech.

NEW FLAG PRESENTED TO WESTMINSTER COLLEGE BY BETA XI CHAPTER



Here graphically recorded is the presentation last May of the new school flag of Westminster College. Shown left to right are Dr. F. L. McCluer, president of the college; Robert Sido, chapter president; Tom Patterson, vice-president; and Gene Booth, past president. The flag was purchased by the chapter at a cost of \$40 earned through the sale of advertising on desk blotters distributed free to students of Westminster and William Woods Colleges.

AUTO HORN BLARES FORTH AS PENNIES HIT THE FUNNEL IN CHRISTMAS PROJECT AT QUEENS

By Garson H. Hertz, Jr., Secretary

Based on an idea outlined in the 1940 service issue of the Torch and Trefoil, Gamma Omicron's Christmas Drive of the past year was probably its most successful project. Having enlisted the aid of the Physics department and the chief engineer's staff of the college, the apparatus was arranged and set up about a week and a half before Christmas. It consisted of a net made of ordinary window screening stretched on a wooden frame, a funnel, a pail, two storage batteries, signs, and an automobile horn.

The net was suspended above a stairway leading from the main lounge to the cafeteria. Above the net was the pail and the funnel with a contact arrangement in between. The plan was to have students pitch pennies from the top of the stairway in an attempt to make the coins land in the funnel. If the pennies (or other coins) missed the funnel, they were caught by the net. If the pennies dropped in the funnel, however, they were directed so that a switch was closed in an electric circuit in which the automobile horn and batteries were connected in series. Then, each time a student was skillful en-

cough to make a coin enter the funnel, the horn would blow and announce the event to all those assembled in the cafeteria. The pennies that passed through the funnel were then collected in the pail beneath. Each day, a giant indicator showed the total number of pennies collected and the number that had passed through the funnel. Other signs and posters played a big part in the drive. The most popular aphorism was, "Don't be a skunk! Lose you (s)cent." Further encouragement was dispensed by those members of Gamma Omicron Chapter who stood guard and kept a constant supply of pennies ready for change.

The drive was successful from several viewpoints. The horn was the kind that sounded like a sick cow lost in the woods at night, the students were delighted by the opportunity to show their skill, and best of all the chapter was able to turn over \$22.68 to the local Salvation Army unit for Christmas aid to the needy. The total amount meant that more than a penny had been collected for each one of Queens College's approximately two thousand students.

BETA IOTA CHAPTER CONTRIBUTES TOWARD BRACES FOR CRIPPLED CHILDREN

All members of Beta Iota Chapter at N. Y. U. gave special cooperation in a drive last spring to collect old razor blades to be turned over to the National Association for Crippled Children for use in making braces. The chapter heartily recommends this project as a timely and worthwhile activity for all other

chapters in the fraternity. Other services included in a well-rounded program in Beta Iota Chapter last year are the annual hobby show, freshman orientation aid, sponsorship of the freshman-sophomore tug-of-war, infantile paralysis fund drive, and special instruction for Scout troops.

ALL-SCHOOL PICNIC AT CENTRAL Y

By Leonard Dishman, Secretary

Beta Gamma Chapter of the Central YMCA College in Chicago conducted a picnic on June 8, 1941, for the entire school. It was an affair of both day and night students and was attended by 350 students, faculty and friends.

National Grove, west side of the city, was the scene of the picnic. As a state law prohibits food being sold on the forest preserve grounds, food tickets were sold at school for two weeks in advance of the picnic to all students of both schools, for twenty-five cents a ticket. Refreshments were then exchanged for the tickets at a booth on the grounds.

The entertainment through the afternoon and evening included games, songs, stories and a skit. The games consisted of raw egg throwing, three-legged races, bike races, soft ball tournaments, and horse-shoes. Prizes were given to the winners of every event.

During the evening, the meller-dramer "Wild Nell, the Pet of the Plains, or Her Final Sacrifice," was presented by Beta Gamma Chapter. An interfraternity sing was also one of the highlights of the evening, coming third only to the skit and the Indian dancing of a local Boy Scout troop.

Ghost stories were told around the campfire by Brother Merritt Kastens. Singing was led by Brother Virgil Seibert and the entire affair was under the general chairmanship of Brother Lawrence Hirsch. Brother Carmen Carsello headed the safety and the program committees.

This is to be an annual project of Beta Gamma Chapter and plans are now being made for next spring's picnic.

AIDS IN MUNICIPALIZATION PLAN

The members of Beta Tau Chapter at Washburn College cooperated in many ways with the school officials last year in bringing about the transition of the college into a municipal university. This year the school is a part of the city educational system and is now the Washburn Municipal University of Topeka.

GAMMA EPSILON TOPS SERVICE RECORD OF 1940-41

Standing as a beacon light in the service program of Alpha Phi Omega is the service record of Gamma Epsilon Chapter on the campus of City College in New York. A total of 49 projects were conducted by the chapter last year. The following is the interesting and challenging list of services, classified in the four major fields:

CAMPUS SERVICES

Freshman information booth (each semester).
Freshman tours (each semester).
Campus map and directory (each semester).
Tree signs.
Tunnel directional signs.
Legislative Congress elections (each semester).
Student Council elections (each semester).
Freshman elections (each semester).
Freshman Guidance program.
Faculty hobby show.
Fraternity intramural publicity.
Clean Campus survey.
Open House guides.
Charter Day ushers.
Boatride Songsheets.
High School Day.
Spring Sing.
Numeral Lights dance committee.
Commencement reception committee.

COMMUNITY SERVICES

Organ Recitals (48 recitals).
Red Cross exhibit.
Used clothes collection.
Red Cross roll call.
Red Cross scholarship.
Magazine contribution.

SCOUTING SERVICES

National Council BSA Questionnaire.
Boy Scout exhibit.
Board of Review.
Troop Leadership.

FELLOWSHIP

Annual Gamma Epsilon and Gamma Delta Dinner.
Clean Chapter Headquarters.
Regular Parties (5).
Smokers (4).
Hikes (2).
College Dances.
Pledge Teas (2).
Election Eve Ball.
Spaghetti Dinners (2).
College Athletic Events.
Theatre Parties (2).
Second Annual Interchapter Dance.
Sorority Parties (8).
Bowling.
City College Boatride.
Intramural Athletics.
Third Annual Barbecue.
Pledge Hike.
Fourth Annual Canoe Trip.

NEW ROOM FOR IOTA CHAPTER

At Park College, Iota Chapter has recently been given the exclusive use of a room formerly occupied by the alumni office. The members are now redecorating their new quarters for immediate occupancy.

SIX SECTIONAL CONFERENCES TO BE HELD THIS FALL

As the principal feature of the national activities of Alpha Phi Omega this fall, six sectional conferences will be held in various parts of the United States. These will offer opportunities for delegations of officers, members, advisors and pledges to assemble for enjoyable fellowship and helpful discussions. The great purpose of the conferences will be the exchange of ideas concerning chapter service and administration which will enable all chapters to intensify their activities during this school year.

The locations and dates for the conferences are as follows:

Kansas City	October 11 and 12
Dallas	October 25 and 26
Chicago (or nearby)	November 8 and 9
Atlanta	November 22 and 23
New York	November 29 and 30
Santa Barbara	December 6 and 7

Each conference will be a "miniature national convention," with the program being similar to that of a convention with the exception of the legislation. The program for each meeting will be arranged by the national fraternity, and the local arrangements will be in charge of the host chapters. Each conference will begin with a dinner meeting Saturday evening and close in the mid-afternoon Sunday. Further details will be announced to all chapters as the meeting dates approach.

Our National President, H. Roe Bartle, will personally officiate at the first five conferences and Brother Sidney B. North, National Secretary will officiate at the west coast meeting in Santa Barbara, California. Several members of the national executive board are expected to participate at each conference.

The greater the number of men your chapter brings to your sectional conference the larger the dividends which will be yours in new service ideas, new methods, inspiration and fellowship. **Plan now to have your chapter well represented!**

BLOOD DONING IN FOURTEEN CHAPTERS

On fourteen campuses last year, men of Alpha Phi Omega participated in blood typing and blood donating service for indigent patients.

Alpha Omega Chapter at Kirksville College of Osteopathy and Surgery provided blood typing facilities for all students who wished to be typed in their school and at the Northeast Missouri State Teachers College. The Medical Unit of Iota Chapter at Kansas City College of Osteopathy and Surgery has offered typing service to all chapters in the Kansas City vicinity.

At Kansas State, Pi Chapter members gave five transfusions within two months after starting the blood donating program.

Other chapters rendering this type of service are Alpha Lambda at North Dakota State, Alpha Omicron Chapter at Southern Methodist

University, Beta Mu Chapter at Southwest Missouri Teachers, Beta Omicron Chapter at the Missouri School of Mines, Beta Tau Chapter at Washburn University, Beta Psi at Southeast Missouri State Teachers, Gamma Tau at Louisiana Tech, and Gamma Phi at Western State.

The following statement has been received from Brother Jack W. Harkey, Vice President of Alpha Omicron Chapter, concerning the blood donating service at Southern Methodist University:

"In the past school year Alpha Omicron Chapter has given well over 10,000 cc. of blood. This does not include transfusions given by men who were typed by our chapter, but who did not give the transfusion through APO. We are continuing our transfusion service throughout the summer and are already making plans to add a large number of names to our present corps."

FLAG PROJECT IN DELTA

By Henry Burr Green, Secretary

PURPOSE: To arouse patriotism among American people.

SERVICE: To secure for your community a display of the American Flag on legal holidays.

HOW THE PROJECT WAS CONDUCTED: The Chapter appointed a flag committee consisting of Burr Green, chairman, James McCrea and Bill Holland. The committee secured letters of recommendation from the mayor of the city, commanding officer of the military unit on our campus, president of the Junior Chamber of Commerce, president of the Rotary Club, and commander of the American Legion. Next the committee found out that the greater percentage of the merchants in our city possessed no flag. They made arrangements to buy flag sets, each consisting of a flag, a flag pole, and a standard to go in the sidewalk, in quantity lots. This set retailed for six dollars plus postage from the factory.

By buying the flags in quantity lots the chapter sold the flags cheaper than the merchants could have bought them as individuals and still paid all expense of handling them. The committee secured an agreement from the mayor of the city to put the receptacles in the sidewalk. Then with aid of most of members of the chapter they contacted all the merchants in town. Those merchants that already had flags were congratulated and urged to be sure and display them every legal holiday. Those merchants that didn't have flags were sold the new flag sets. Then the committee made lists showing all the flag days and delivered one to each of the merchants in town.

OMICRON GROWS IN SERVICE

The University of Iowa became increasingly cognizant of Alpha Phi Omega last year as Omicron Chapter conducted a series of excellent projects. Included were the campus-wide Songfest at Christmas time, erection of a Christmas tree on the campus to add to the holiday festivities, sponsorship of the Knot Hole Club, guide service for the university and for the Chamber of Commerce and "Use the Walks" campaign in the spring.

FIVE-HUNDRED "T" SHIRTS DISTRIBUTED BY ALPHA ALPHA CHAPTER

Members of Alpha Phi Omega in all parts of the nation ordered "T" shirts last year from Alpha Alpha Chapter at the University of Illinois. Over 500 were sold, and the chapter is continuing its sales this year. Brother Christy Broughton, Treasurer, is in charge of the project. Members or chapters wishing to send orders for shirts singly or in quantities may address him at 345 Newman Hall, Champaign, Illinois.

During the sponsorship of this publicity feature last year, Alpha Alpha Chapter was also busy in a diversified service program. The annual high school wrestling tournament was handled as usual by the chapter, assistance was given during Farm and Home Week, Christmas trees were provided for an orphanage and for the campus, Scouts were entertained at a football day, swimming supervision was provided for boys in the university pool and a tutoring system was established.

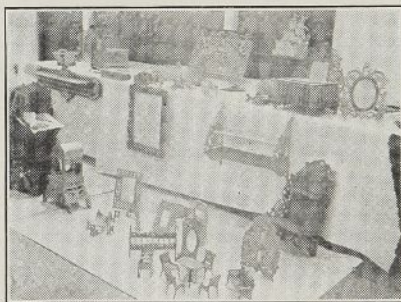
GUIDE SERVICE AT NEBRASKA

By Louis Kash

Our Guide Service progressed splendidly at the University of Nebraska last year and was much appreciated by the administration. We guided a total of 2,221 visitors over the campus, of whom 1,162 were high school students. In starting this project we decided it would be best to put ourselves at the disposal of the Publicity Department, which was already conducting tours. Each member filled out a schedule card of when he would be available and these cards were turned over to the publicity office.

We received our guide training by accompanying other guides who were already in service, from material in the university bulletin, and from general information secured from instructors, supervisors and other students. The members who worked most diligently in this project are Stanley Lowe, Frank King and Norman Sundberg.

WIDE RANGE OF HOBBIES AND CRAFTS DISPLAYED AT SANTA BARBARA SHOW



These pictures indicate some of the varied articles displayed at the Hobby Show sponsored last spring by Psi Chapter at Santa Barbara State College in cooperation with the Chamber of Commerce and other civic organizations. Santa Barbarans learned that their neighbors in spare hours make and collect articles of beauty and distinction. Over 15,000 articles were exhibited and there were over 17,000 visitors by actual count who passed through the nine buildings which were used for the show.

There were miniature trains that raced over five miles of track . . . 300 birds from orange to pure white . . . a magnificent collection of dolls . . . rare old furniture and hand-made articles . . . all types of crafts from race boats to pottery . . . 300 sets of salt and pepper shakers . . . 7000 arrow heads . . . beautiful hand work from all quilts to paintings and Indian collections representing the past civilization of the Santa Barbara vicinity.

Psi Chapter has generously made available a considerable amount of material concerning this outstanding hobby show, material for distribution to other chapters to aid in the sponsoring of similar shows in other communities. The officers of the chapter have already made arrangements with the Santa Barbara Chamber of Commerce for dates for the Hobby Show of 1942.

To Brother Roland Gaitskell goes the credit for originating this hobby show idea in his chapter and it was through his efforts that the show was such a huge success. In addition to Brother Gaitskell as Chairman, the following brothers contributed in various ways to the hobby show: Brothers Reg Sundin, Ben Gautier, Don Pennington, John Daughenbaugh, Vernon Silva, Danny Logan, Max MacFarlane, Louis Betschart, Harry Redoglia, Richard Reverdy, Ray Normandin, Bob Ilenstein, Burdette Gandy, Charles Waite, Ronald Witt, Don Brown, Bill Brown, Don Fernan, John Lindlotz, and Don Detweiler.

A REAL BULLETIN BOARD CLEAN-UP AT MIAMI

By Harry Rinehart, President

After repeated editorials in the "Hurricane" and complaints from the administration officials as to the general appearance of the bulletin boards Alpha Pi Chapter proposed a project to the Delta Tau Alpha, National Art Fraternity. It was agreed that during the between semester vacation they would letter all bulletin boards on the campus according to our plans with Alpha Phi Omega supplying the materials. Each board was blocked off in six sections with the spaces being labeled Miscellaneous, Wanted, For Sale, Lost and Found, Student Organizations and Help Wanted. In a glass frame at the bottom of the boards are the rules.

After the lettering was done, we nailed 1" strips dividing the sections. The real work and service came in keeping the boards clean and enforcing our rules. This work was only done on the student boards. For the faculty and administration notices we proposed that if they would buy the materials we would see that a glass enclosed board with lock and key was made and erected. This they did and Alpha Phi Omega rounded out a complete project. Below are the rules by which the Miami bulletin boards are now used:

1. Every notice must be dated as of date posted and will remain on board for one week.
2. Every notice must be placed under appropriate column heads and fastened neatly with thumb tacks.
3. Maximum size for all student notices must not exceed 6"x9".
4. No political posters will be allowed on boards on the first floor.
5. All notices not complying with the above rules will be removed.

TRAFFIC DIRECTION AT BUTLER

The entire membership of Alpha Tau Chapter cooperated in directing traffic during university meetings and athletic events last year. The chapter also sponsored the clean-up week, a fingerprinting campaign, and served as ushers on many occasions.

HISTORICAL MARKER AT THE UNIVERSITY OF IDAHO ERECTED BY GAMMA NU CHAPTER



Members of Gamma Nu Chapter putting the finishing touches on the new historical marker to inform passing tourists about the University of Idaho. The legend thereon is as follows: "Created January 30, 1889, six months before Idaho became a state. Classes began October 12, 1892. William E. Borah addressed the first graduating class in 1896. Campus valued at \$3,000,000. Residences valued at \$1,000,000. Campus and farms include 900 acres; university forest, Moscow mountain, 7000 acres. Enrollment averages 3000."

This inscription is burned into two-inch fir plank. The members of the chapter worked on this project in odd hours throughout the last school year, and the marker was completed and erected on May 20, 1941. In this picture, balanced on top of the cross bar are Brothers Kenneth Bezold, founder and first president, and Gerald O'Connor, new president. Climbing up the ladder is Brother Theron Smith. Standing at the bottom are, left to right, Brothers Stewart Clelen, Ed Zielinski, Harold Brevick, Jim Durham, and Verald Smith.

GROWING PROGRAM IN MOTHER CHAPTER

Collecting clothing for distribution to needy children was one of the outstanding services of Alpha Chapter at Lafayette College last year. Other projects included guide service for campus visitors, service as host on high school visitation day and assistance as judges in the local Scout camporee.

FIFTH ANNUAL SCHOLARSHIP AWARD AT KANSAS CITY UNIVERSITY

Alpha Eta chapter at the University of Kansas City held its fifth annual scholarship bridge party at the Scottish Rite Temple Building in Kansas City last March 29, thus providing funds for the presentation of its regular scholarship to an outstanding Scout of the Kansas City area.

PERSONAL IDENTIFICATION PROVIDED BY EPSILON CHAPTER

By Bill Manning, Secretary

Blood typing and fingerprinting were two featured projects of Epsilon Chapter at the Northeast Missouri State Teachers College during the past year. To aid the students and faculty in personal identification were the aims of these activities.

With cooperation of Alpha Omega chapter at K. C. O. S. we secured the services of experienced laboratory technicians to aid with the blood typing. The mere fact that an individual's blood type was known has saved many lives in cases of severe accidents and illness.

Under the supervision of the Missouri Highway Patrol we took the fingerprints of approximately 500 students. Counting previous fingerprints taken it is estimated that approximately five-sixth of a 1200 enrollment now have their fingerprints on file. In connection with this project we conducted an open meeting and presented an illustrative lecture by a leading authority in the field to acquaint the students with the reason for fingerprinting.

SCHOLARSHIP AWARD BY BETA PSI CHAPTER

By Lawrence Brown, Award Chairman

A plan has been devised by Alpha Phi Omega at Southeast Missouri State Teachers College to provide a scholarship for a graduate of high school who is or has been associated with the Boy Scout movement an opportunity to continue his education.

Two candidates from each high school in the college district, which is composed of Southeast Missouri, may compete on recommendation of school authorities. The scholarship will be awarded for the first time in 1942.

The award will be made on the basis of a competitive examination covering the fields of English, mathematics, social studies, and science, and on the basis of the contestant's Scouting record. Of the total score 80% will be based on the examination and 20% on an essay on Scouting.

The examination will be given at the college during the high school literary meet. The scholarship amounts to fifty dollars—all tuition and fees for one year. The money for this award is kept in a separate bank account and the first fifty dollars is already deposited.

BOOK EXCHANGE AND HOUSING SURVEY IN BETA OMICRON CHAPTER

By William L. Pollock, Secretary

Beta Omicron Chapter at Missouri School of Mines carried out an extensive service program during the school year 1940-41.

The students of M S M must find living quarters in the city of Rolla as there is no dormitory at the school. Construction of Fort Leonard Wood near this city caused critical conditions to arise. Rents went up tremendously in many places and there was a shortage of rooms due to a tremendous influx of laborers and government employees. The government personnel will probably be permanently located here so that the housing situation will remain unsatisfactory. Beta Omicron has done its part to help the students adjust themselves to the new arrangement by conducting an extensive housing survey of Rolla. We compiled a list of rooms which will be available to students this fall, the rents which will be charged, the nature of the accommodations, and wherever possible obtained assurance that rents would not be raised during the school year. This list is available to all students and prospective students through the registrar's office of the school.

Beta Omicron this year started a cooperative book exchange on the campus. It is true that we do not handle many books because, due to the technical nature of the texts used, many students retain them for references. However, the number which we do handle is sufficient to justify our efforts in this field and we plan to make the book exchange a permanent institution on this campus.

In addition to these projects we conducted our annual fingerprinting project for the civil identification files of the FBI. We also conducted several minor projects to round out an active year.

HIKING TRAIL AT PENN STATE

Alpha Beta Chapter has started work on a new hiking trail to be opened for student use. Along the trail trees will be labeled for the benefit of those who wish to observe the various species.

ETA CHAPTER'S BOY SCOUT CAMPOREE



Fire by friction, one of the great thrills in Scouting, is always included in the events of the annual camporee sponsored by Eta Chapter at Northern Illinois State Teachers College in cooperation with the local Boy Scout council. Committees of chapter members take charge of the numerous preparations for the camporee and conduct the entire program.

Ten other chapters assisted in similar camporees and field meets for Scouts during the school year 1940-41.

STUDENT DIRECTORY PUBLISHED BY GAMMA CHI CHAPTER

By Roscoe Goldsmith, Secretary

Even while our group was not yet an officially installed chapter of Alpha Phi Omega we were given the responsibility of publishing the directory of Howard College. Several members, with myself as chairman, composed a committee to secure and arrange the information for the directory. This we did through the aid of the registrar and his staff, and we published the directory in three sections, including the faculty, students, and organizations.

A second committee had charge of the business arrangements for the booklet, selling advertisements to business firms.

A third committee had charge of the printing. They made the necessary contact with the printer and secured price quotations for the consideration of the chapter.

All members of Gamma Chi Chapter assisted in the circulation of the directory. We distributed them at chapel and had them available in the administration building for one day. The remaining copies were placed in the registrar's office for further distribution.

BETA MU AIDS IN SCOUT CIRCUS

By Robert Coonrod, President

In the annual Scout-Cub Circus of the Ozarks Empire Council, our chapter at Southwest Missouri State Teachers College assisted in the grand entry in which 2,000 cubs, Scouts and leaders participated and directed the patriotic finale.

Brother Allan C. Foster, Scout Executive and Scouting advisor, writes as follows concerning the service of the chapter:

Beta Mu chapter did a fine service job on May 2 in connection with our Council-wide circus. The men of Alpha Phi Omega assisted in the preparation of Scouts for each event in succession and had complete supervision of the patriotic event which closed the program. While the lights were turned off, they directed the 2,000 Scouts participating in the program to places on the floor and when the lights were again turned on the Goddess of Liberty stood on a platform surrounded by American flags. The audience then joined in singing "God Bless America." It was a most impressive and inspiring scene. The work of Alpha Phi Omega was of high order throughout the entire event. Brother Edwin Condray directed the work of the chapter members and the entire group deserves much credit for the success of the circus.

ELECTION SERVICE



This scene at last spring's student council election at the University of Texas shows members of Alpha Rho Chapter at work. The chapter has full charge of conducting all student elections on the campus, including judging, counting and tabulating of the results.

At Cornell, the outstanding service of Gamma Chapter last year was handling the elections for the student body of 6000.

Election service in other chapters included Tau Chapter at the University of Florida, Alpha Delta Chapter at San Diego State, Alpha Iota Chapter at Ohio State, Alpha Pi Chapter at Miami, Beta Psi Chapter at Southeast Missouri Teachers, Gamma Epsilon Chapter at City College and Gamma Omicron Chapter at Queens College and Gamma Theta Chapter at University of Colorado.

Writes Brother Garson H. Herizel, Jr., Secretary of Gamma Omicron Chapter:

For the past 2½ years, the members of Gamma Omicron Chapter have aided in the election of representatives to the Student Council of Queens College. Each semester, the chapter has become a more important part of the election machinery. Heretofore, because the members of the Student Council counted the ballots in their own election, some doubts were expressed by the student body regarding the accuracy of the election. This past semester, however, Alpha Phi Omega took over the election lock, stock, and barrel. When the project was accepted by the chapter, a clause was included in the motion making it mandatory that the entire election be handled without outside interference. The Student Council agreed to the mandate in order to gain the advantage of Alpha Phi Omega's reputation for trustworthiness.

First, a list was made of the free hours of the chapter's active members. Then, a schedule was drawn up to provide at least two members as guardians of the ballot boxes between the hours of 8:30 A. M. and 3:30 P. M. throughout the weeks of the several nominations and final elections. Alpha Phi Omega made all the tabulations.

As in no other semester, the results of the election were accepted by the student body as unerringly accurate and free from tampering and the prestige of Alpha Phi Omega was greatly enhanced.

EMERGENCY SERVICE AT MASSACHUSETTS TECH

By Maxwell Kaplan, Secretary

During the past year, Alpha Chi Chapter has done many services for the community, campus, Scouting, and its members. One of the more important services to both Scouting and our community, was our participation in the Emergency Service Program.

Our work consisted primarily in taking a training course, which taught us the fundamentals of this newly organized program, and of being "on call" to assist any Troops which might need our aid to complete their part in this program.

As we look back over the thirty-year history of Boy Scouts of America, we find dramatic highlights of unusual achievement that have appealed to boys and men alike.

The activities in which the boys engage and the various Scout Requirements such as First Aid, Signaling, Pathfinding, Safety, Knife and Axe, and the handling of heavy ropes, naturally equip the Scout for his part in community mobilizations in time of disaster.

Our three-fold training program consists of the following:

1. Conditioning individual Scouts to meet the need of the times, as individuals, and or as patrols and or troops.
 2. Training patrols in effective teamwork.
 3. Training patrols to coordinate smoothly and efficiently when working together as a Troop.
- The individual training is conducted by the troops, and is largely in the following fields:
- a. Observation, identification and memory.
 - b. Communication by movement and signal.
 - c. Outdoor living.
 - d. Safety.
 - e. Preservation of human life.
 - f. Food supply, production, and conservation.

The training of the patrols is achieved largely by means of patrol projects, games, hikes, and other coordinated actions, which tend to form a well disciplined unit of an orderly and well disciplined Troop.

MAN-POWER AT WORK AT SAN DIEGO

Closing last year's activities with fifty-six active members, Alpha Delta Chapter conducted a forceful and well-rounded service program throughout the year. Publication of the student directory, an annual project of the chapter, was handled in fine style with all members participating. Twenty-five members aided the student health department in giving physical examinations, thirty manned the polls at the student council elections, twenty ushered at school plays, a weekly project, twenty worked in car parking at student functions, twenty-eight served at Dads' Day dinner, nineteen assisted in freshman orientation, the entire chapter helped sponsor the "March of Dimes" and made donations to the Thanksgiving and Christmas drives on the Campus. Eleven members helped deliver baskets of foodstuffs to needy families on Thanksgiving and sixteen helped conduct a Scout Troop-O-Ree.

FOOTBALL PARKING AREA SIGNS ERECTED BY ZETA CHAPTER

At Stanford last fall, the parking congestion at football games was much relieved by the erection of guide signs at the stadium parking lot. The "March of Dimes," an annual project of Zeta, was again conducted with good results. Finger-printing at fall registration, an information booth during pre-registration, collection of books for Folsom prisoners, an interchapter dance with Gamma Beta Chapter of San Jose and varied assistance in Scout-ing rounded out a successful year.

GAMMA UPSILON AIDS BRITISH-AMERICAN AMBULANCE CORPS

A service of special importance in Gamma Upsilon Chapter at Tulane last year was the staging of a show which netted a profit of \$150 for donation to the British American Ambulance Corps.

Other activities of the chapter included cooperation with the Army-Navy recreation center, a Red Cross Drive on the campus, participation in homecoming activities, ushering at university functions and guide service.

BLOOD PLASMA BANK At Kansas City College of Osteopathy and Surgery

By Dr. Homer Matz, President

In transfusion cases, whole blood is used to replace primarily the fluid which has been lost by hemorrhage or shock, and secondarily to place into the blood stream new blood cells which are needed by patients suffering from anemia. The actual need for blood cells is slight, and in ninety per cent of the cases plasma is what is needed instead of whole blood. Therefore, our chapter believes that a plasma bank is preferable to the regular blood transfusion service.

Our unit at the Kansas City College of Osteopathy and Surgery has purchased the necessary equipment through our treasury to establish a plasma bank which will be available at all hospitals in Kansas City. The advantages of this type of service over the regular blood donor service are:

- (1) The patient does not have to be blood-typed.
- (2) The donor does not have to be blood-typed.
- (3) The blood can be collected from anyone who wishes to donate and properly treated to separate the plasma.

- (4) The plasma is then stored in refrigeration ready for use.
- (5) The apparatus for giving the plasma can be set up and the transfusion started in a minimum of time.

A pint of plasma is worth two pints of blood, because the rarely needed cells which compose forty-five per cent of whole blood have been separated from the fluid portion.

To those chapters which are considering projects of this type we suggest that you contact your local hospitals and ask their cooperation with you in establishing a plasma bank.

FRESHMAN WEEK OUTING CONDUCTED BY ALPHA IOTA CHAPTER

Last fall's outing for new students at Ohio State was sponsored by Alpha Iota Chapter with all members cooperating. Other projects included assistance in the Mile-of-Dimes drive on the campus, management of the student elections for class officers, Homecoming queen and May queen, guide service on highschool day and emergency leadership in Scout Troops.

"TUTOR TICKLER" SHOW DEPICTS THE AMERICAN WAY AT IOWA STATE TEACHERS COLLEGE



Shown here is the Cornetucky Octet harmonizing at last year's Tutor Tickler show at the Iowa State Teachers College. This was one of five acts of the interesting production, which Beta Epsilon Chapter cooperated in staging, with Brother Chris Overgaard serving as co-director.

ROOMING HOUSE SURVEY

By Don Swainston, Secretary

During the month of May, Gamma Phi Chapter of Alpha Phi Omega at Western Michigan College of Education, Kalamazoo, completed one of its major campus projects for the year. This project is known as the Rooming House Survey and is an annual activity.

This survey is conducted in co-operation with the Dean of Men and consists of an inspection of all the rooming houses occupied by male students, numbering approximately 125 houses. It has been planned by the Dean of Men and is conducted to gather the necessary information that is needed regarding the rooming houses. There are two uniform cards to be filled out for each house with questions pertaining to conditions of size, equipment, windows, and price.

After the rooming house is thoroughly inspected, it is then given a rating of A, B or C and the cards are then dated and returned to the Dean of Men.

Every year there is a chairman chosen to have charge of this rooming house survey. The chairman has volunteers, who distribute the cards and see that the cards are then returned to the Dean of Men.

As a result of this survey the Dean has a rather unique file of the male rooming houses and can tell from this which rooms to recommend.

We of the Gamma Phi consider this one of our major projects and feel that by rendering this service we are able to make better rooming conditions for all the male students, as well as being a real help to the Dean of Men.

SCOUT TROOPS AIDED AT CALIFORNIA

Gamma Gamma Chapter during the past year furnished leadership for local Scout Troops by taking them out on overnight hikes when the Scoutmasters were unable to do so because of business or other reasons. This work has been carried on through the local Scout headquarters and has been well received by Scoutmasters and executives.

ANNUAL AWARD FOR SERVICE AND LEADERSHIP



Shown here is the 1941 presentation of the George H. Charno Award for outstanding campus service and leadership at the Central Missouri State Teachers College. A trophy is presented each year by Brother George H. Charno, member of Alpha Phi Omega's National Executive Board, to the student on the Warrensburg campus who has rendered the greatest service to his college and has given special leadership in worthwhile campus activities. Selection of the student to receive the award is made by the faculty. In this picture Brother Charno is presenting the trophy to Brother Garland Fitzpatrick, the 1941 recipient. Left to right are Brother Charno, Dr. George W. Diemer, president of the college, Dr. Lonzo Jones, dean of the faculty, and Brother Fitzpatrick.

HISTORY OF GEORGIA TECH'S BLOOD BANK

By Lewis Stern, Vice President

When the preparatory group at Georgia Tech was working toward Alpha Phi Omega affiliation in 1939-40, it was suggested that we form a blood bank as one of our projects. In one of the business meetings we discussed a name for the project. Someone humorously suggested the name "Blood on the Hoof Committee." After using that name for a few months, it was decided to change to a more dignified title, and a more simple one, namely "Blood Bank." This title may be somewhat disillusioning in that it implies that the blood is stored, but in reality our bank is a list of volunteer donors who have been typed and listed and are ready to be called. They are listed in four groups as to types.

During the first year of typing, forty-eight men volunteered for the service, and these men gave twenty transfusions during the school year. The second year of the blood bank 226 men were typed, tested and listed. This increase was due to publicity. Three weeks before the typing was to start editorials and news articles were published in the school paper each week. Then two days before the typing mimeographed notes, telling of the time and place, were put in each man's mail box.

During the first year of the blood bank one difficulty was the financing of transportation for the men to and from the hospitals. They either walked or paid their own fare. However, last year a generous donation was given by an interested individual to pay for

quick transportation for all donors. There were sixty-five transfusions given last year to charity patients throughout the different hospitals in Atlanta. Out of those sixty-five, five were of the No. 1 type, the rarest type there is. One of the sixty-five was a paying case, and the donor received the money.

In calling a donor there are two things taken into consideration:

(1) Whether he has previously given a transfusion, and when.

(2) Whether his class schedule conflicts with the time he would have to go.

No man is asked to give a second transfusion unless we are unable to find someone else to go. At least three months must elapse before we consider asking a man to give the second transfusion.

During the first year of the blood bank, the school hospital received the calls for donors. However, this proved to be such a big job, as the project grew, that the hospital could not handle the calls the second year. Last year we asked the school Y. M. C. A. to receive the calls and their office willingly complied with our request, but as the project has continued to grow, this has become too great a task for the Y. M. C. A. Therefore, this coming year the Alpha Phi Omega chapter is arranging for its own headquarters with a telephone to receive the calls. This headquarters will also be used for an information booth and a "Lost and Found" bureau.

From the very beginning, this project has been one of the most interesting and certainly the most important project conducted by Gamma Zeta Chapter.

FOREIGN RELATIONS PARTY AT SOUTHERN CALIFORNIA

Alpha Kappa Chapter sponsored a party last year for foreign students who were attending the University of Southern California. The purpose was to improve relationships between native and foreign students.

Brother Ximeno Tejada, a student from South America, commented about the party as follows:

"It is by such gestures that goodwill and friendship will be obtained throughout the world."

The committee in charge of the affair included Brothers Charles Gregg, Irvin Cohen, Bud Dickason, George Mann, Millard Ewing and Theodore Greenfield.

RHO CHAPTER GROWS IN RECOGNITION

A constantly growing service program in Alpha Phi Omega at the University of North Carolina is gaining for Rho chapter an increasingly important place in campus affairs. Last year the members' services in the infirmary during a Flu epidemic attracted much attention and provided much needed aid.

Annually Rho chapter presents a trophy to the campus organization which renders the greatest service to the university, and presents awards to Boy Scout troops of Chapel Hill for the best window displays in downtown stores during Scout week.

The chapter supervised the cleaning of trails in Battle Park, a wooded section just off the campus, and served as hosts during the South American summer school held at the university.

FIRST AID COURSE OFFERED TO STUDENTS AT MILWAUKEE TEACHERS

One of the principal projects of Upsilon Chapter last year was the sponsoring of a first aid course for chapter members. This year the first aid training will be opened to all students interested in taking it. Other projects of Upsilon Chapter last year included ushering at college functions, sponsoring music appreciation hour, freshman orientation aid, assistance at the social center, and service as student peep mediator.

New Campus Fireplace at Oklahoma City U.



This new fireplace just recently completed by Beta Chi Chapter contains stones from many localities sent for the purpose by chapters in various sections of the United States. Some of the stones are inscribed with chapter names and school names.

Writes Brother Wendell King, chairman of the project: "This is probably the best planned and most skillfully built fireplace in Oklahoma City. It has three fire units and one barbecue pit connected to one central flue and stands over six feet high. The university is certainly proud of this construction and has already started work on beautifying the surrounding grounds. The fireplace cost about \$75, most of which was obtained through donations from business men who are interested in promoting the welfare of the university. Our chapter will maintain this structure as a permanent part of the campus for the use of various organizations and we very much appreciate the fine cooperation of other chapters in preparing and sending stones to give the fireplace a 'national' aspect."

Another new fireplace is at the University of Wisconsin, built by Beta Theta Chapter. The Lehigh fireplace, completed and dedicated in 1938 by Alpha Psi Chapter, continues to be widely used by campus groups.

FLAG RAISING AT WILLIAM JEWELL

A regular responsibility of Alpha Mu chapter last year was the daily raising and lowering of the United States flag on the William Jewell College campus. A large majority of the chapter members served in this capacity at some time during the year, two being assigned each week.

Other activities of Alpha Mu chapter included car-parking for guests at college functions, an information booth for freshmen, a campus clean-up in which the entire chapter participated, and nine classes in swimming instruction for neighboring Scout troops.

ALPHA OMEGA MARCHES ON

With a consistently strong service record throughout its affiliation with Alpha Phi Omega, Alpha Omega Chapter at the Kirksville College of Osteopathy and Surgery functioned in a magnificent way last year.

The annual charity ball topped the list of major projects, with proceeds being donated to the clinic. Blood typing was provided for students of two schools, a series of boxing matches were sponsored and screens were provided for the Nursing Home.

The chapter handled the registration of students for selective service, ushered at school functions, furnished guides for visitors, presented an award to the student making the highest mark in comprehensive exams, provided a Christmas tree for the school, established the Fred Grozinger memorial student loan fund, sponsored the Red Cross Drive on the campus and held several smokers and suppers.

BETA ZETA AIDS SCOUT LEADERS INSTITUTE

By Dr. A. S. Edwards, Senior Faculty Advisor

The members of Beta Zeta Chapter handled the details of the Scout Leaders Training Institute held at University of Georgia April 1 and 2, 1941.

The chapter arranged for rooms, meals, registration and places of meeting for the various sections. The national and local officers expressed themselves as very well pleased with the work of Alpha Phi Omega in connection with this Scout Seminar. About 200 Scouters were present.

PHI CHAPTER'S "SNOW BALL" IS IMPORTANT SOCIAL EVENT AT SYRACUSE

The midwinter dance called the "Snow Ball" and sponsored by Phi Chapter was acclaimed as one of the most successful social events at Syracuse last year. This is an annual project of the chapter.

Other activities of Phi during 1940-41 included the regular campus clean-up, a collection of newspapers for the women's gym fund, finger-printing, orientation aid to freshmen, and an Eagle Scout conference on the campus.

SENIOR SCOUTING CONFERENCE AT DEPAUW UNIVERSITY

By Albert Rosencrans, Past President

The fifth annual Scout Conference at DePauw University was held on April 26, 1941, under the sponsorship of Alpha Upsilon Chapter of Alpha Phi Omega. Plans for the meeting were started the previous fall, and by the time of the national convention in December the conference committees were all appointed and functioning.

The theme of the conference was "Why and How to Organize a Senior Scout Patrol."

Publicity in connection with the meeting was carried out in four parts, including an early announcement to Scout Executives, a general "save-the-date" announcement to Scout troops, a tentative program, and a final bulletin requesting reservations.

The principal speaker at the conference was Brother George E. Chronic, Deputy Regional Scout Executive, and the chief banquet attraction was Don Lash, Olympic distance star and member of the Indiana state police staff.

Throughout the planning and conducting of the conference, the cooperation of Brother C. J. Carlson, Regional Scout Executive, and Brothers H. T. Gratz and Hubert Vitz of the Indianapolis Council was invaluable.

Other major projects of Alpha Upsilon chapter during the year included sponsorship of the President's Birthday Ball, distribution of the campus map to new students, fingerprinting, orientation service, campus-wide bridge tournament and ping pong tournament, guide service, Red Cross roll call, old clothes drive, March of Dimes, securing Bundles for Britain, and presenting a radio to the Putnam County Hospital.

GAMMA LAMBDA AIDS WELFARE ASSOCIATION

In its first year in Alpha Phi Omega, Gamma Lambda Chapter has gained a recognized position on the Clemson College campus. Several important services sponsored include aid to the local welfare association.

GAMMA DELTA'S SERVICES GROW

At the Commerce Center of CCNY many and varied services were conducted by Gamma Delta Chapter last year. Freshman orientation started the year's activities, and was followed through the year by the Red Cross drive, infantile paralysis drive, safety campaign, President's birthday ball, management of school theatricals, circulation of school periodicals, interfraternity dance, Scout troop leadership and numerous hikes, smokers and parties for the enjoyment of the members. The chapter served constantly as a listening post to keep the dean's office informed of student opinion.

ANNUAL BINDEX SCHOLARSHIP AWARD IN GAMMA BETA CHAPTER

The outstanding project of Gamma Beta Chapter at San Jose State College last year was the scholarship awards provided annually through sale of advertising in a six-page bindex. Two scholarships of \$50 each were given, one to a boy and one to a girl.

Other projects of the year included repairing the student union furniture, ushering and stage assistance at school functions, providing white curb markings for car parking around the campus, participation in Scout Courts of Honor, solicitation of funds for new Scout camp and many other services.

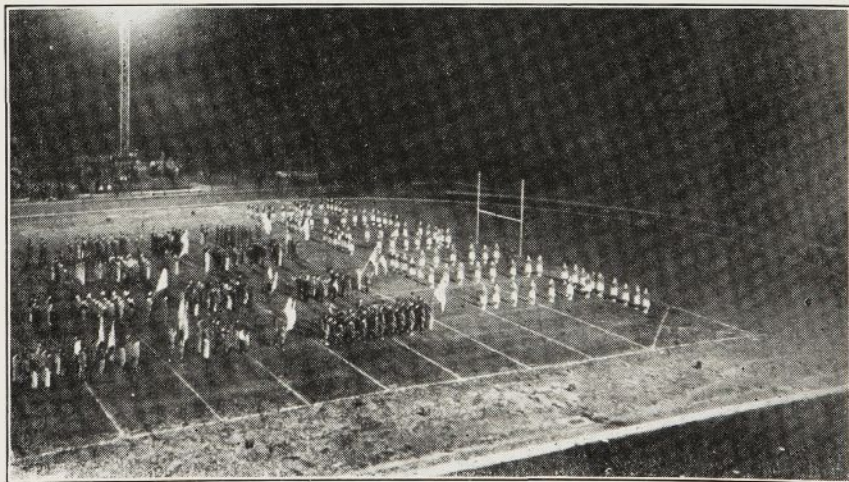
Signs Used in the "Use the Walks" Campaign at the University of Michigan April, 1941

"Don't destroy the work of God,
Go around and save the sod."
"A concrete suggestion:
Use the Walks."
"Try something new,
Don't cut through."
"It won't be lawn now."
"Take heed
New seed."
"Walk around and lose a pound."
"Give us young blades a chance."
"Tiptoe through the tulips, but not through
here."
"Don't be a dud. Keep outta the mud."
"To heck with your class, keep off the
grass."
"Leave your footprints on the sands of
time, not here."

GAMMA MU CHAPTER DEVELOPS EXCELLENT SERVICE PROGRAM

In its first full school year of affiliation with Alpha Phi Omega, Gamma Mu Chapter at Evansville College developed a noteworthy series of activities in all four of the fraternity's service fields. The chapter published the student directory, aided at registration, sponsored a Scout Day football game, assisted the college in compiling and mailing the summer school catalogue, helped provide recreation for less-chance boys, provided guide service for convention groups, conducted an Eagle Scout Court of Honor ceremony, ushered at the Scout Circus, served as judges, scorers and timers in a first aid contest and put on a half-hour Scout radio program.

SCOUT DAY AT SOUTHWESTERN LOUISIANA INSTITUTE



This picture shows part of the Scouts who participated as Troops in the Scout Day sponsored by Beta Phi Chapter at Southwestern Louisiana Institute last fall. Similar projects were sponsored by Sigma Chapter at Northwestern University and by several other chapters. The programs for these occasions include not only attendance at games but also campus tours which acquaint the Scouts with university activities.

SERVICE GROWS AT NORTH DAKOTA STATE

Consistent growth and progress through the years has gained campus-wide recognition for the services of Alpha Phi Omega at North Dakota State College. Last year, Alpha Lambda Chapter's major projects included a snow sculpturing contest, a fall dance contest, freshman orientation service, an interorganization singing meet, homecoming aid and a campus cleanup.

Along with these the chapter participated in the Fargo winter carnival, erected a sign over the campus gate, handled sales of school medallions, conducted a "bashful beau" contest, started blood typing of members, organized a new Scout Troop, conducted a Scout radio program and held a spring outing and periodic dinner meetings.

MOTHER AND DAD'S DAY SPONSORED BY ALPHA NU CHAPTER

Among the services of Alpha Nu Chapter at St. Norbert College last year was the sponsorship of a special day's program for mothers and fathers of students. Other projects included the checking of attendance at convocations, fingerprinting, various community services, assisting at field mass, ushering for Scout events, sponsoring an orphanage Scout Troop, and serving at the annual Scouter's banquet. The members aided each other in numerous ways including assistance in securing part time jobs and tutoring help.

CAMPUS MAP PROJECT HEADS KAPPA CHAPTER'S SERVICES

Outstanding among the many services conducted by Kappa Chapter at Carnegie Tech last year was the distribution of a campus map to new students, a map prepared entirely under the supervision of the chapter and printed in colors.

Other projects in the year's program included a book exchange, freshman orientation aid, information booths during exhibition nights, guide service, hat checking at campus functions, lecture tour of Carnegie Art Exhibit, travel bureau and tours to points of interest in Pittsburgh.

HOSPITAL CALLING SERVICE AT TEXAS TECH

A new project inaugurated in Beta Sigma Chapter last year is a hospital calling service in which the members give assistance to students who are confined in the college hospital. This activity has created wide comment among the student body and has been greatly appreciated by the students who directly benefited from it.

Other major activities of Beta Sigma last year were a watermelon feed for freshmen, campus clean-up campaign, ushering at commencement and baccalaureate services, information and guidance service for campus visitors, distribution of British war relief dance posters, aid to convention groups, ushering and serving at a Scout supper, Easter egg hunt, the traditional traffic safety program on the campus, and several fellowship events.

GAMMA ETA SPONSORS ANNUAL MID-WINTER DANCE AT SPRINGFIELD

By Frank Kelly, Secretary

A lack of formal affairs on the Springfield College campus prompted Gamma Eta Chapter to sponsor the first annual mid-winter dance last year. In the fields for which our students are preparing it is especially important that they know how to conduct themselves under social circumstances, and thus we feel that this new project is of lasting benefit to the student body.

SPONSORING COLLEGE DANCES AT ROCKHURST

Gamma Xi Chapter was given special mention in the 1940-41 report of the student union at Rockhurst College for its service in sponsoring all-school dances and other social activities.

FINGERPRINTING CONDUCTED BY THIRTY-TWO CHAPTERS IN 1940-41



This is a scene from one of the most successful Alpha Phi Omega fingerprinting projects of the past school year. It shows the project of Gamma Tau Chapter at Louisiana Tech, conducted March 28 to 30, 1941, while the new group was making final preparations for official installation. From left to right are Esthman S. Newman, publicity chairman of the chapter, Emily McGee, Virginia Judy, Miriam Davis, E. I. Richmond, special agent of the FBI who aided in the campaign, Landon Miles, chapter president, and Eugene Frech, treasurer. Over 1000 students were fingerprinted during the three-day drive on the campuses of Louisiana Tech and Ruston High School.

Among the many other fingerprinting projects, several have been specially reported to the Torch and Trefoil. They are the campaigns of Chi Chapter at University of California at Los Angeles, Alpha Gamma Chapter at Purdue, Beta Delta Chapter at East Texas State, Alpha Psi Chapter at Lehigh, Beta Tau Chapter at Washburn, Beta Upsilon Chapter at Northwest Missouri Teachers and Gamma Theta Chapter at University of Colorado.

A photograph of the Washburn fingerprinting campaign in progress was published in a March issue of the "Collegiate Digest" the college picture section which has nation-wide circulation.

FOUR FEATURED PROJECTS AT THE UNIVERSITY OF FLORIDA

By Walter B. Timberlake, Secretary

Infirmary Service—This project was started on our campus in March, and in the short period before the spring term closed it proved to be very much worthwhile and much appreciated by the student body. The service consists of two calls each day to the infirmary by a delegation of chapter members to aid the patients in whatever ways possible. The assistance includes the delivering of notes and requests and securing books and other materials which the patients need while confined.

Book Exchange—This exchange, which has become a permanent part of the service of Tau Chapter, is operated for a period of two weeks at the beginning of each semester. It is a cooperative affair in which the students bring used books and leave them for sale. For each book sold we receive 5c from the seller. The chapter thus serves as an agent to bring together the buyers and sellers of used books. At the end of the two weeks all money is turned over to the student council and the chapter then receives a flat amount of \$25.00 from the council for handling the book exchange. The exchange is open from one to six o'clock p. m. for six days a week during each two-week period. It is located on the first floor of the Union and is given splendid publicity in the Florida Alligator, the campus paper.

Circulation of "Orange and Blue"—The Orange and Blue is the official news organ of the university and is published three times a week. It is printed by the school and contains the official announcements pertaining to the students, and is displayed on all bulletin boards. Our chapter made arrangements with the Director of Residence to have the bulletin distributed to all dormitory sections as well as being posted in the academic buildings.

Election Service—During the spring elections, Alpha Phi Omega members serve at the polls as assistants and watchers from one p. m. to 6 p. m. on voting day, and at night we count votes, a job which usually takes from 8 p. m. to 4 a. m. This service has proved valuable to the Election Committee.

TREE LABELING AT CITY COLLEGE



Brothers Eddy Grupper, Morty Holstein and Les Barrer of Gamma Epsilon Chapter at work placing labeling signs on the trees on the City College campus.

(Photo courtesy of Cosel Photo Service)

CAMPUS CLEAN-UP AT MISSOURI

One of the major projects of Beta Eta Chapter at the University of Missouri last year was a spring clean-up of the campus. Other projects included polishing the memorial plaques and conducting fingerprinting for students.

STUDENTS CENTER SERVICE AT MARYVILLE

The members of Beta Upsilon Chapter served as hosts at the student center at Northwest Missouri State Teachers College last year along with a series of other interesting projects. Also included in the

year's program was a fingerprinting campaign, guide service on Senior Day, ushering at student assemblies and assistance in the local Boy Scout camporee.

"A WORD OF PRAISE"

(An Editorial Reprinted from the campus newspaper of Santa Barbara State College concerning the work of Psi Chapter.)

A word of praise . . . is due the local chapter of Alpha Phi Omega, national service fraternity, for their Santa Barbara hobby show held recently in several places downtown. We're very proud of an organization such as this one which quietly goes about bringing credit to this college.

We're compelled to compare Alpha Phi Omega with several of the local campus fraternities, sororities and other organizations who are all noise and extremely little accomplishment. True, some of these groups sponsor events which take a great deal of planning and are of interest to the membership, but in just what way do they contribute to the good reputation of Santa Barbara State college?

Nevertheless, the fact remains that members of Alpha Phi Omega are to be commended upon the success of their show, the originality of the idea and the courage they maintained in their conviction that the town would support an endeavor of this sort.

CAMPUS BEAUTIFICATION AND CHRISTMAS SERVICE ARE FEATURES IN BETA BETA'S PROGRAM

By William Konde, Corresponding Secretary

A new slant was added to the "keep off the grass" project at Michigan State last spring by means of a contest with a prize of five dollars for a winning slogan. The contest aroused much interest as evidenced by the nearly 200 replies. By starting the students thinking about saving the grass the contest accomplished its purpose.

Signs were placed at paths on the campus at the beginning of spring term and were up until late in April. During this time students were noticed to use the walks more although 100% cooperation was not attained or even hoped for.

Some paths that seemed absolutely necessary did not have signs and in this way the chapter hinted to the administration for new walks.

Signs were painted by the committee and other members but were made and placed, at spots designated by the committee, by the building and grounds department of the college. Many of the slogans turned in for the contest will be used next year.

Last year our "Red Stocking" project was

successfully carried through with the filling of 268 stockings at Christmas for needy children of Lansing.

This was accomplished by contacting the Salvation Army soon after Thanksgiving and making the necessary arrangements to get the stockings. These are delivered by the Army several weeks before Christmas to the chairman's home who in the meantime has contacted various organizations and dorms on campus to find out how many they will take and fill.

Along with the initial arrangements publicity was received in the college and local papers to follow along with the campaign. The stockings were picked up at the organizations by the Army which had a list of addresses and a map with the places red penciled supplied by the committee.

This is a good project in which to use pledges as there is a lot of work in mimeographing the contact letters and delivering the empty stockings to the organizations. All of the work is coordinated by a chairman appointed by the chapter.

MU'S FOURTH ANNUAL EAGLE SCOUT CONFERENCE

By Harold F. Bennett, Secretary

For the past four years Eagle Scouts from all over the state have been meeting in the spring with Mu chapter on the Indiana University campus for a two-day conference program of fun and instruction. Besides the opportunity to mix with Eagles from all corners of the state the delegates participate in round table discussions with well known university and Scouting officials, a banquet, dance, swimming, baseball, and many other activities.

Although the conference is not held until late April or early May, chapter members begin making arrangements in the fall.

For the 1941 conference, we first secured the permission and co-operation of university officials. The publicity department recognizing the conference as another opportunity to sell the university to prospective students sent out form letters, handled newspaper stories and many other details, and footed a large portion of the expenses.

A letter was sent to each Scout Executive in Indiana explaining our plans and asking for a list of Eagle Scouts. These lists were turned over to the publicity department which distributed invitations and application blanks. Members of the chapter sent personal letters to their executives and friends urging them to attend.

A charge of one dollar payable in advance was made to cover the banquet and miscellaneous expenses. Fraternities and dormitories provided free lodging to the delegates.

Each detail of the two-day program was entrusted to committees of chapter members, all under the general supervision of a convention chairman. This year's chairman was Brother Bob Sabin who had charge of registration at the National Convention.

The two-day program began with the arrival and registration of delegates Saturday morning from eight to noon. Early comers were taken on conducted tours of the campus.

One of the biggest events was the meeting with the selection committee Saturday morning of the ap-

plicants for Mu's annual \$75.00 scholarship.

After lunch the delegates met in small groups for informal discussions with faculty members on what training the university offers in their chosen fields. The remainder of the afternoon was taken up with swimming and other sports.

High point of the conference was the evening banquet attended by several university officials. After eating, there was group singing and short, entertaining speeches. One talk outlined the purposes and activities of Alpha Phi Omega and expressed the hope that many of the delegates would be attending the university next year and become active members of the fraternity.

Following the banquet there was dancing to the best orchestras in the country via recordings, with the girls from the two Bloomington high school sororities attending en masse to furnish dates for the delegates.

A business meeting and worship services on Sunday morning ended a very enjoyable and successful conference.

CAMPUS MOVIES BY BETA PI CHAPTER

Several times last year the students of the University of Tulsa were given an opportunity to view movies of their campus under the sponsorship of Beta Pi Chapter. A radio broadcast was also conducted for special publicity for the university. Assistance was given at the state science convention held on the campus, and a campus clean-up campaign was conducted in the spring.

"Questions and Answers about Alpha Phi Omega"

The new informational and promotional pamphlet titled "Questions and Answers about Alpha Phi Omega" is proving extremely valuable to those chapters now using it. Much praise has been forthcoming from chapter leaders who have ordered and received supplies of this new publication.

It is available in quantities to all chapters to present the full facts about the fraternity to prospective members.

PLEDGE SERVICE



This picture shows a pledge project under way in Xi chapter at Iowa State. The pledges of last spring cleaned and polished all of the bronze commemoration plates on their campus. More than 100 different kinds of pledge service was carried out by the new men of Alpha Phi Omega last year forming an important part of the fraternity program. Other interesting examples follow:

- Keeping scrapbook in Gamma chapter at Cornell.
- Putting up Snow Ball decorations at Syracuse.
- Posting "Keep Off the Grass" signs at U.C.L.A.
- Planning the fellowship activities in Alpha Gamma chapter at Purdue.
- Working at student elections at San Diego State.
- Serving as hosts at trichapter meeting at Southern California.
- Suggesting five new service projects with detailed plans for one in Alpha Psi chapter at Lehigh.
- Cleaning the Venetian blinds at Central Y.
- Assisting in infantile paralysis fund drive in Beta Iota chapter, N. Y. U.
- Cooperating in circulation of the school paper at Southeast Missouri State Teachers College.
- Providing a permanent binder for the TORCH AND TREFOIL in Gamma Epsilon chapter, C. C. N. Y.
- Preparing campus maps at Queens College.
- Raising and lowering the campus flag at Louisiana Tech.
- Assisting in publication of student directory at Howard College.
- Campus clean-up at Northern Illinois State Teachers College.
- Selling tickets to benefit program for blind students at the University of Kansas.
- Erection of Christmas tree at Ohio State.
- Assistance in community blood typing at North Dakota State.
- Complete a certain number of hours on major projects and a certain number on minor projects in Alpha Rho Chapter, University of Texas.
- Ushering at DePauw University.
- Making a sick list for the infirmary at M. I. T.
- Assistance in Farmers Week project at Michigan State.
- Cooperating in Dad's Day parade at Southwest Missouri Teachers.
- Digging barbecue pit for school rally at Oklahoma City University.
- Interest other men in Alpha Phi Omega at Kansas City College of Osteopathy and Surgery.

SANTA BARBARA CHAMPIONSHIP KITE FLYING CONTEST

(This is the program and regulations used in the kite flying contest sponsored jointly by Psi Chapter of Alpha Phi Omega, and the Junior Chamber of Commerce and Department of Recreation of Santa Barbara, California. It was held, Sunday, April 20, 1941, and was a very successful and colorful event.)

CLASSIFICATIONS: THREE

- Group I. Juniors: Any entrant not yet 12 years of age by Sunday, April 20, 1941.
- Group II. Seniors: Any entrant not yet 16 years of age by Sunday, April 20, 1941.
- Group III. Parent and Son or Daughter: Any adult and Junior working together in event No. 4.

EVENTS:

I. HIGHEST FLYER: (Bow kites and Box kites will be judged separately.) In this event kites shall be started on signal and worked up to the highest possible altitude. At the end of five minutes a second signal shall be given and contestants shall return to the starting line. Judges shall order kites at lower elevations to be brought down so that by a process of elimination, determine the three kites flying at highest elevation. (Nearest overhead.)

II. HUNDRED YARD DASH: (Any style kite.) A ball of string which has been measured shall be given to each contestant. Kites shall start on signal, shall be run out to the end of the string and wound back, (on reel or other device), to the hand of the flyer. Assistant may stand under kite to catch it. The contestant who shall first complete the event and return to the starting line shall be declared the winner. Second and third places shall be determined in order of completion.

III. STRONGEST PULLER: (No box kites.) Kites shall be run out to the end of a measured string. Spring scales shall be used and the pull measured. First three places shall be awarded to kites measuring the strongest pull.

IV. MAKING A TAILLESS KITE: (for Parent and Son or Daughter only.) All materials, (Paper sticks, etc.), will be provided for contestants. Making shall include lashing, (no tails), stringing, covering, etc. The kite must fly without a tail. Awards shall be given to the three kites which are first completed and flown by contestants.

V. SMALLEST KITE that will fly at least 15 feet in the air.

VI. LARGEST KITE: Large kites will be judged on the basis of the largest kite flying 100 feet or more above the ground, with a measured string of 300 feet.

VII. SPECTACULAR AND COLORFUL KITE: This will be divided and prizes will be awarded in each group according to the following divisions:

1. Shape. (Contour, such as a bat, bird, airplane, etc.)
2. Design. (Best colored, painted, unusual decorations.)

CONTESTANTS RULES:

1. Girls and boys of 16 years of age and under shall be eligible.
2. No contestant shall be allowed to enter more than one event, except in the case of numbers V, VI, and VII.
3. Each contestant shall be allowed one assistant.
4. Contestants will register at the field before each event.
5. No contestants shall be permitted to fly kites before tournament begins.

SAFETY RULES TO OBSERVE WHILE TRYING OUT KITES FOR THE CONTEST:

1. Fly kites in an open field away from power lines.
2. Never use wire, tinsel cord, or damp string.
3. If your kite catches in an electric line . . . LET GO! Don't try to pull it down! Phone the service company and a lineman will come and get your kite down for you.

KITES:

1. Kites shall be made and flown by contestants entering them.
2. All kites entering any event must fly.
3. Reels or other devices for quick winding, (made by contestants) will be allowed.

KITE HOSPITAL: Hospital with material for minor repairs shall be established on the grounds.

ARRANGEMENTS FOR FLYING FIELD: The field shall be marked with three lines as follows:

1. Boundary line back of which contestants shall not run in working his kite into the air.
2. Start and finish line, (100 feet in front of boundary line), on which contestants shall stand at the start of event and to which he will return for judging at the conclusion of the event.
3. Assistants line, (50 feet in from starting line), on which assistants may hold kite and project it into the air at start of event.

AWARDS: Points shall be given for the first three places in each event. 5-3-1 points respectively. Winners of these places shall be presented with suitable badges or prizes.

ON ALL EVENTS THE DECISIONS OF THE JUDGES SHALL BE FINAL

TO MANAGE "PEP"

Asked to Handle Problem by "A" Club

(Article reprinted from a May issue of campus newspaper of Alabama Tech.)

Alpha Phi Omega service fraternity will be in charge of the sponsoring of "pep" in Auburn next year, during football season, according to an announcement made yesterday by the "A" Club.

Alpha Phi Omega will take over the job which has been handled by one man, since its founding three years ago.

The service fraternity has this year taken interest in the display of pep at rallies and at Auburn football games. The members were responsible for the construction of the gigantic orange and blue football during the last season, which was rolled along by several people in each pep parade.

Duties of the fraternity as a group pep sponsor, will be to promote attendance of students at rallies and at football games, to arrange for speakers, music, and entertainment at rallies, and, in general, to further the display of pep by students.

SPONSOR CAMPUS CHEST DRIVE AT CORNELL

Thirty members of Gamma Chapter cooperated last year in sponsoring the campus chest drive at Cornell University. Other principal projects of the chapter during the year included a fingerprinting campaign, management of student council elections and governing board elections and Red Cross drive.

SAFETY CAMPAIGN AT LEHIGH

Alpha Psi Chapter consistently conducts a widely recognized and valuable service program at Lehigh University. Fifty members participated in the chapter last year. Included in the activities were a safety campaign on the campus, fingerprinting, maintenance of the traditional fireplace and swimming instruction for Scouts.

INCREASED SERVICE and GREATER MAN-POWER are the "success twins" in Alpha Phi Omega.

Roster of Alpha Phi Omega Chapters

ALABAMA

Delta - Alabama Polytechnic Institute..... Auburn
Gamma Chi - Howard College..... Birmingham

ARKANSAS

Beta Rho - University of Arkansas..... Fayetteville

CALIFORNIA

Zeta - Stanford University..... Stanford
Chi - University of California at Los Angeles..... Los Angeles
Psi - Santa Barbara State College..... Santa Barbara
Alpha Delta - San Diego State College..... San Diego
Alpha Kappa - University of Southern California..... Los Angeles
Gamma Beta - San Jose State College..... San Jose
Gamma Gamma - University of California..... Berkeley

COLORADO

Gamma Theta - University of Colorado..... Boulder

FLORIDA

Tau - University of Florida..... Gainesville
Alpha Pi - University of Miami..... Coral Gables

GEORGIA

Beta Zeta - University of Georgia..... Athens
Gamma Zeta - Georgia School of Technology..... Atlanta

IDAHO

Gamma Nu - University of Idaho..... Moscow

ILLINOIS

Eta - Northern Illinois State Teachers College..... DeKalb
Sigma - Northwestern University..... Evanston
Alpha Alpha - University of Illinois..... Urbana
Beta Gamma - Central Y. M. C. A. College..... Chicago
Gamma Sigma - University of Chicago..... Chicago

INDIANA

Mu - Indiana University..... Bloomington
Alpha Gamma - Purdue University..... Lafayette
Alpha Tau - Butler University..... Indianapolis
Alpha Upsilon - DePauw University..... Greencastle
Beta Lambda - Indiana State Teachers College..... Terre Haute
Gamma Mu - Evansville College..... Evansville

IOWA

Xi - Iowa State College..... Ames
Omicron - University of Iowa..... Iowa City
Omega - Drake University..... Des Moines
Beta Epsilon - Iowa State Teachers College..... Cedar Falls

KANSAS

Lambda - University of Kansas..... Lawrence
Pi - Kansas State College..... Manhattan
Beta Alpha - University of Wichita..... Wichita
Beta Tau - Washburn College..... Topeka

KENTUCKY

Alpha Zeta - University of Kentucky..... Lexington

LOUISIANA

Alpha Epsilon - Louisiana State University..... Baton Rouge
Beta Phi - Southwestern Louisiana Institute..... Lafayette
Gamma Tau - Louisiana Polytechnic Institute..... Ruston
Gamma Upsilon - Tulane University..... New Orleans

MASSACHUSETTS

Alpha Chi - Massachusetts Institute of Technology..... Cambridge
Gamma Eta - Springfield College..... Springfield

MICHIGAN

Beta Beta - Michigan State College..... East Lansing
Gamma Pi - University of Michigan..... Ann Arbor
Gamma Phi - Western State Teachers College..... Kalamazoo

MISSOURI

Epsilon - Northeast Missouri State Teachers College..... Kirksville
Iota - Park College..... Parkville

Alpha Eta - University of Kansas City..... Kansas City
Alpha Mu - William Jewell College..... Liberty
Alpha Phi - Washington University..... St. Louis
Alpha Omega - Kirksville College of Osteopathy & Surgery..... Kirksville

Beta Eta - University of Missouri..... Columbia
Beta Kappa - Central Missouri State Teachers College..... Warrensburg
Beta Mu - Southwest Missouri State Teachers College..... Springfield
Beta Xi - Westminster College..... Fulton
Beta Omicron - Missouri School of Mines and Metallurgy..... Rolla
Beta Upsilon - Northwest Missouri State Teachers College..... Maryville
Beta Psi - Southeast Missouri State Teachers College..... Cape Girardeau
Medical Unit of Iota - Kansas City College of Osteopathy and Surgery..... Kansas City

Gamma Xi - Rockhurst College..... Kansas City
Petitioning Group - St. Louis University..... St. Louis

NEBRASKA

Alpha Theta - University of Omaha..... Omaha
Alpha Sigma - University of Nebraska..... Lincoln

NEW JERSEY

Nu - Upsala College..... East Orange
Petitioning Group - Rutgers University..... New Brunswick

NEW YORK

Gamma - Cornell University..... Ithaca
Phi - Syracuse University..... Syracuse
Beta Iota - New York University..... New York
Gamma Delta - School of Business - C.C.N.Y..... New York
Gamma Epsilon - City College - C.C.N.Y..... New York
Gamma Iota - Brooklyn College..... Brooklyn
Gamma Omicron - Queens College..... Flushing

NORTH CAROLINA

Rho - University of North Carolina..... Chapel Hill

NORTH DAKOTA

Alpha Lambda - North Dakota Agricultural College..... Fargo

OHIO

Alpha Iota - Ohio State University..... Columbus

OKLAHOMA

Beta Nu - Northeastern State College (inactive)..... Tahlequah
Beta Pi - University of Tulsa..... Tulsa
Beta Chi - Oklahoma City University..... Oklahoma City
Beta Omega - Oklahoma Baptist University..... Shawnee

PENNSYLVANIA

Alpha - Lafayette College..... Easton
Beta - University of Pittsburgh (inactive)..... Pittsburgh
Kappa - Carnegie Institute of Technology..... Pittsburgh
Alpha Beta - Pennsylvania State College..... State College
Alpha Psi - Lehigh University..... Bethlehem

SOUTH CAROLINA

Gamma Lambda - Clemson College..... Clemson

TEXAS

Alpha Omicron - Southern Methodist University..... Dallas
Alpha Rho - University of Texas..... Austin
Beta Delta - East Texas State Teachers College..... Commerce
Beta Sigma - Texas Technological College..... Lubbock
Gamma Kappa - Texas Christian University..... Fort Worth
Gamma Rho - North Texas State Teachers College..... Denton

VIRGINIA

Theta - University of Virginia..... Charlottesville

WASHINGTON

Alpha Xi - Washington State College..... Pullman
Gamma Alpha - University of Washington..... Seattle

WISCONSIN

Upsilon - Milwaukee State Teachers College..... Milwaukee
Alpha Nu - St. Norbert College..... West DePere
Beta Theta - University of Wisconsin..... Madison

National Executive Board

Walter W. Head..... St. Louis, Mo.
National Honorary President
H. Roe Barile..... Kansas City, Mo.
National President

William J. Campbell..... Chicago, Ill.
National First Vice-President
Dr. M. C. Hayes..... DeKalb, Ill.
National Second Vice-President

Sidney B. North..... Kansas City, Mo.
National Secretary
Dr. Edwin C. Johnson..... Alexandria, Minn.
National Treasurer

Dean Francis M. Bacon..... Los Angeles, Cal.
Carl S. Bauman..... St. Louis, Mo.
Kenneth Cedarland..... Cincinnati, Ohio
George H. Charno..... Kansas City, Mo.
Prof. John S. Coie..... Pullman, Wash.
C. M. Finnell..... Chicago, Ill.

James P. Fitch..... Dallas, Texas
Dr. H. H. Germond..... Gainesville, Fla.
T. W. Lacy..... Kansas City, Mo.
Dean Arno Nowotny..... Austin, Texas
Harold F. Pote..... New York, N. Y.

Dr. Louis H. Renfrow..... St. Louis, Mo.
Prof. Kent D. Shaffer..... Pittsburgh, Pa.
Dr. Lester I. Tavel..... St. Joseph, Mo.
Prof. A. L. Thomas..... Auburn, Ala.
Dr. Ray O. Wyland..... New York, N. Y.