

TORCH
and
TREFBLE

LOYALTY TO BROTHERS

By Lt. Michael M. Gaupin, USN



Lt. Gaupin has had an active role in APhiO and Scouting. Eagle with bronze, gold and silver palms, and Order of the Arrow Vigil, he attended the World Scout Jamboree in Athens, Greece, as the U. S. Naval representative. He was President of Delta Theta, University of Louisville, for 2 years and is active in Section 29 affairs. His Naval career thus far has included two world cruises, a tour of Vietnam duty and he is now a Flight Instructor and Officer Training Officer in DASH Helicopter Training School, Virginia Beach.

"Loyal Brothers we . . . True to self and to each other . . ." I seem to remember these meaningful words more and more as I look back on the great experiences Alpha Phi Omega offers. Experiences in leadership, friendship, service, and particularly experiences in loyalty—experiences we as Brothers are fortunate to share within our chapters as well as on (to use a Navy term) the "outside," whether this means outside the chapter or in the wild and wooly world.

So often we are concerned with loyalties to our Brothers while on campus—after all, that is one of the basic concepts of a fraternity. As of 16 December 1967 we had a membership of 103,054, and we're growing more every day. Our pledge classes become larger. Our actives increase their number, and certainly our alumni growth is reflected in these figures. We have something to be proud of in our loyalty to each other, for we are ALL Brothers, whether we're working together day by day in chapter projects or whether our alumni of APO happen to be fighting for our ideals in some far corner of the world.

Why do we have this loyalty to each other? The obvious answer is we believe in loyalty and what it can do for us, the chapter and the fraternity as a whole. Once a man is

activated, he is a Brother and will remain a Brother for the rest of his life. I am very proud of this fact, and I'm sure all Brothers are proud of this lifetime bond they accrue upon membership in Alpha Phi Omega.

By now you're suspecting that I'm trying to get a message across, that I'm either leading up to something, or that I'm merely a sentimental loyalist. I'll admit to the latter, and in doing so would like to relate an experience that occurred in the Gulf of Tonkin on Christmas Eve, 1965.

I was the Officer of the Deck on board a Navy destroyer stationed 1,000 yards behind an aircraft carrier in what the Navy calls the "plane guard" station. In other words, the destroyer was the guardian angel for those homeward-bound pilots just returning from air strikes over Vietnam. For one Commander flying a crippled Crusader aircraft we probably played the role of Santa Claus in addition to "angel" that evening, as upon touchdown his plane exploded . . . fortunately, he had enough time to eject.

I don't think I really need to say this is anything but a pleasant experience, particularly in the darkness of a moonless night with approximately five to eight foot swells bobbing him around. Luckily, we were able to find him and brought him

(Continued on page 3)

Our Cover

Brothers Roy Losada and Rusty Keyes, Sigma Gamma, San Antonio College, describe layout of pacing course to Scouts in the Central District, Alamo Area Council Camporee. Now in their second year, Sigma Gamma Brothers acted as judges in eight major areas of competition for the 250 Scouts who participated in the three day meet. Charles L. Mims, chapter Treasurer, excellently photographed the entire event.



Torch and Trefoil



ALPHA PHI OMEGA — NATIONAL SERVICE FRATERNITY

Volume 43, No. 2

April-May, 1968

NATIONAL OFFICERS OF ALPHA PHI OMEGA

E. Ross Forman Philadelphia, Penn.
National President
Dr. Glen T. Nygreen New York, N. Y.
National First Vice President
Aubrey B. Hamilton St. Louis, Mo.
National Second Vice President
Robert J. Hilliard Pullman, Wash.
National Third Vice President
Gerald M. Plessner Miami, Fla.
National Treasurer
Joseph J. Scanlon Kansas City, Mo. 64106
National Executive Director and Editor

TORCH AND TREFOIL is issued regularly four times a year, October, December, March and May, from Office of Publication, 1100 Waltower Building, 823 Walnut Street, Kansas City, Missouri 64106. Printed by Smith-Grievess Company, Printers and Lithographers, Kansas City, Missouri. Second Class Postage paid at Kansas City, Missouri. Subscription price \$1.50 per year.

EDITORIAL STAFF

Joseph Scanlon, Editor and National Executive Director. Tom Barnawell, Associate Editor and National Service Representative. Correspondent Contributors from the membership as acknowledged under by-lines.

Guest Editorial

aboard the destroyer. When I offered him a cup of coffee, he looked up at me and tears came to his eyes; he said, "Hello, BROTHER!" He had seen the APO engraved in the stone of my college ring.

After thanking God that his life was saved, he had but one desire—to sing the Fraternity Toast Song. This was the first time he had seen an Alpha Phi Omega Brother since 1956, and he wanted to know everything about the fraternity. This was a rather impressive attitude to take for a man that had been at death's door only moments before.

Loyalty to Brothers. It sure would be nice if he received regular correspondence from his chapter, particularly since he was over there fighting for the right (indirectly, of course) that chapter has to exist. The point is, regardless of policies, views or what have you, many of our Brothers are risking their lives daily for what we all believe in, and a bit of encouragement from us at the chapter level goes a long way in extending service to these Brothers. Our job must be much more than a merely passive position: We should do all we can to give that iota of pleasure to OUR Brothers resulting from correspondence sent by their chapters of Alpha Phi Omega. There were no pieces of literature I looked forward to more during my stay in the Vietnam area than the monthly "SLUDGE," sent by my Brothers of Delta Theta Chapter, University of Louisville.

Many projects are available, and since we believe in service to others in general, we certainly don't have to restrict our projects to those dealing only with Brothers of Alpha Phi Omega. Lambda Alpha at East Tennessee State University didn't—they sent long Christmas scrolls to military units in Vietnam. Xi Sigma at Carson-Newman College did the same. Many other chapters have conducted projects of this type, and you can't imagine how fully worthwhile these projects are until you've been there.

I've expounded enough. I thoroughly enjoy every aspect of my affiliation with Alpha Phi Omega, and am extremely proud to be a Brother in such a fine organization. I have more Brothers in my fraternity than anyone in any other fraternal organization in the world. I'm proud of the loyalty so evident throughout Alpha Phi Omega, and I sincerely hope we all express this loyalty to our Brothers, wherever they may be. For I will always remember "... Loyal Brothers we ... True to self and to each other ... Our Fraternity."

WASHINGTON, D.C., SITE OF 1968 CONVENTION



The Shoreham Hotel and Motor Inn

Plans are well underway for the 1968 National Convention of Alpha Phi Omega, to be held December 27-29 at the Shoreham Hotel in Washington, D. C.

Mr. Ed Andrews, of the American Camping Association, and APhiO National Board of Directors, is this year's convention coordinator.

Chapters that have not already done so are urged to set a fund to send their delegates to the convention. Fees will be announced at a later date.

APhiO National Conventions provide a unique experience in your fraternity life. They offer the opportunity to meet and talk with Brothers from all parts of the country, and the chance to exchange ideas with other delegates on the best possible ways to be of service on your campus.

Plan now to meet with your Brothers from all parts of the United States at "D. C.-'68."

THANK YOU, DEANS

By Gene Lake, NSR

Deans of Students and Deans of Men are among Alpha Phi Omega's best friends and frequently are boosters on campus after campus.

This valued friendship was once again clearly demonstrated at the meeting of Deans and Student Personnel Administrators held March 9-11 in New Orleans. The occasion was the annual Southwestern Association of Student Personnel Administrators session for members in Texas, Arkansas, Louisiana and Oklahoma.

SWASPA association members include two members of Alpha Phi Omega's Board of Directors, Dean James P. Hannigan, Texas A & M University, and Dean Lewis N. Jones,

Texas Tech University, who served as hosts at an APhiO "Thank You" breakfast in honor of the Deans and Student Personnel Administrators. The National Executive Director also was in attendance. I thoroughly enjoyed the opportunity to talk about APhiO with the Deans and Administrators from campuses with chapters and to those where chapters will be formed.

Junius Robinson, advisor to Tau Gamma, Southern University at New Orleans, aided with the breakfast by arranging for the Brothers from SUNO, and Kappa Xi, Xavier University, to attend the breakfast and adopt one of the visiting guests as a "little brother" for the morning. They talked about APhiO and gave literature to each "little brother."

Reactivations

A note of congratulations is due to the men of the chapters listed below. They have worked hard to reactivate chapters of APO on their campuses.

Iota, Park College, Parkville, Missouri; Omega, Drake University, Des Moines, Iowa; Delta Alpha, University of Cincinnati; Zeta Chi, Centenary College, Shreveport, Louisiana; Theta Zeta, University of New Hampshire, Durham, and Mu Theta, Luther College, Decorah, Iowa.



TAU BETA . . . the relaxed atmosphere of their installation photo is not reflective of the list of service projects carried on by the APhiO's at Appalachian State University. The picture was taken following formal installation ceremonies and banquet conducted by Past National President, Tom T. Galt. Photo by M. G. Davis

TAU IOTA . . . Dean Carroll C. Gates, right, Dean of Students of Louisiana College, receives the Tau Iota Charter from Professor Richard Herron, APO Sectional Chairman, at their formal installation banquet. Looking on are: (left to right) Paul Dutcher, Chief Scout Executive of the Attakapas Council; Earl Heidt, Chapter Advisor; and R. W. "Chip" Turner, Tau Iota President.



CHAPTER OFFICERS . . . of the recently installed Tau Zeta Chapter at Texas Southern University, Houston, are: (l to r) Wilbur Jones, President; Walter Crimer, Corresponding Sec.; Walter Fontenot, Alumni Sec.; Bobby Jones, Historian; Clifford Wilson, 2nd Vice President; Claude Murphy, Treasurer; (kneeling) Johnny Brewster, Business Mgr.; and Alvin Johnson, 1st Vice President.

TAU THETA President Joe Carpenter holds the APhiO Charter presented to Wayland Baptist College at a formal installation banquet. Shown with Carpenter are (l to r) Dean Bryan Clemens, Wayland Dean of Students; Dr. Lewis N. Jones, Dean of Student Life at Texas Tech; Jerry P. Watson, Tau Theta Advisory Chairman; and Dr. W. Wayne Alford, Dean of Wayland College.



TAU ETA . . . Dr. Walter Brown, President of Cobleskill College, receives the Tau Theta charter from Kenneth L. Packer, N. Y. Sectional Representative, left. Looking on are: Grant R. Bunzey, Scouting Advisor; David J. Frost, Advisory Chairman, and Terrance D. Kloss, Past President of Tau Eta. Photo by Harold Toles

CHAPTER INSTALLATIONS

Section Leaders Meet at Yale And Atlanta

The National Fraternity, led by the President and the Executive Director, conducted two successful Leadership Training courses for sectional leaders and staffs on March 23 and March 30, respectively, at Atlanta and at Yale University.

More than 50 sectional leaders participated in the two sessions. The new guide manual for Sectional Chairmen was reviewed and discussed and the guide book for Sectional Representatives distributed.

The sessions were a direct response to the increased importance chapter delegates at the constitutional convention placed on sectional organization.

Among those sharing in the round table discussions at Atlanta were: Dr. Jerome Zeller, Sectional Chairman for Georgia; William E. Cook, Florida; Dean Richard Burts, North Carolina; H. Lindy Martin, Alabama; Prof. Richard H. Herron, Mississippi; Dr. Tom T. Galt, Past National President; Gerald M. Plessner, National Finance Chairman.

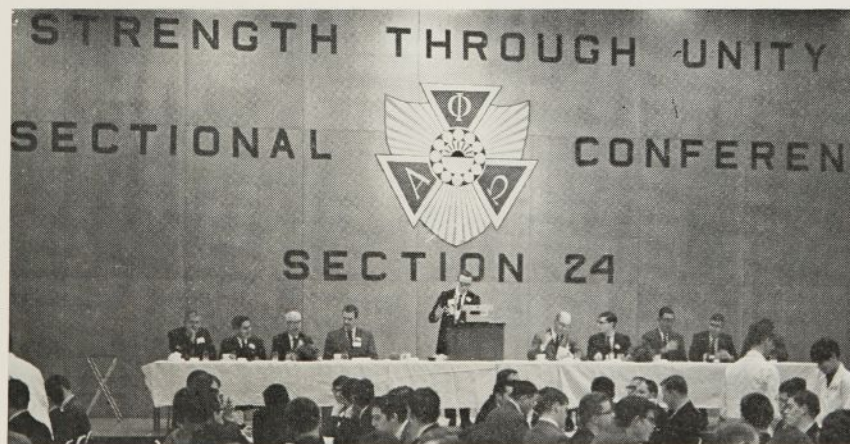
Delegates present at Yale included Dr. Glen T. Nygreen, National Vice President; Richard Mastrangelo, Chairman for New England; Ron Howard, Vice Chairman, Maryland and the District of Columbia; Howard Patton, Chairman, New Jersey; Gerard Kennedy, Vice Chair-



THE SECTIONAL LEADERS Training Conference, held at Yale, was a giant step forward in developing the new program for APhiO section personnel. Sectional Representatives attending were: (Back row, left to right) Gardiner Gay, Vice Chairman, New England; Warren C. Weidman, Section 24 Chairman, Penn.; Dennis Cook, Lowell E. Kobrin; Steven H. Adolpus, Chairman, Upper N. Y.; Jim Schutt, and Charles Townsend, (Middle Row) Rex Pielstick, Rev. John Kennedy; Les Fisher; Zalman Pober; Gerald Kennedy, Sec. 25 Vice Chairman; and Howard R. Patton, Sec. 25 Chairman; Dr. Glen T. Nygreen, First National Vice President; E. Ross Forman, National President; Bob Alexander; Joseph Scanlon; John T. Reid, Vice Chairman, N. J.; and Richard E. Mastrangelo, Chairman, New England.



SECTION 3 . . . Alpha Delta, San Diego State, traditionally wears something unique to sectional conferences. This year at Long Beach they showed up as "Flower Children." From left to right are: Irwin H. Girst, Chairman Sec. 3; Sam Catalano, Alpha Delta President; Wayne White, Andy Webb, Rich Brazda, Chapman McGrow, Steve Willoughby, Wes Hoffmaster and Dave Harris, National Service Representative.



THE SECTION 24 conference held in March was hosted by Zeta Theta at Drexel Institute of Technology. Seated at the head table for the opening luncheon are: (left to right), Dean Otto Witzell, Dean of Drexel Graduate School; John Reschovsky, Zeta Theta; Joseph Scanlon; Rev. Paul Fenske, Faculty Advisor; Robert Faix, Zeta Theta President; Dr. William Hagarty, Drexel President; Steven Rellis, Zeta Theta; Harold Myers, Drexel Treasurer; Warren Weidman, Section 24 Chairman; and John Lloyd, Faculty Advisor.

man, New Jersey; Warren Weidman, Chairman, Pennsylvania Section 24; Charles Canning, Chairman, Pennsylvania Section 42; Dr. Elliott H. Kone, Yale University; Dean Stephen Adolphus, Chairman for Upper New York State; John Reid, Vice Chairman, New Jersey; Don Bickford and Gardiner Gay, Vice Chairman, New England.

Sectional Conferences

From coast to coast, Brothers of Alpha Phi Omega have been meeting in sectional conferences to further the goals of the Fraternity.

This spring the emphasis has been on Leadership; what it is, and how to build and develop it. Leadership, not only in its relation to the chapter, the campus and the National Fraternity, but its importance to oneself in helping to achieve goals both personal and professional. Small group sessions discussing membership, rush, chapter finances and other important areas found that the leadership co-efficient is the key to successful projects and services.

Methods of leadership must change to keep apace of our dynamic society. The new ideas that are exchanged in the sectional conferences give a great deal of value to the meetings.

Regrettably space does not permit even a re-cap of the ideas and methods exchanged in the conferences.

We would like to thank all the Brothers who have acted as hosts at these conferences, and their advisors and special guests who have given so much to assure their success.

APhiO Summer Scouting Project

Since Alpha Phi Omega's prime objective is service to others, and since scouting is one of the main vehicles of such service, Delta Nu at Yale established scouting units in the ghettos of New Haven. This was an attempt by a small group to have a community-wide influence within the ghettos, and to this end the first "inner-city" scout troops in the nation were formed, in 1960.

The summer scouting project of 1967 represented the second attempt by members of Delta Nu to bring scouting activities to inner-city youngsters on a year-round basis. Working in cooperation with the Quinnipiac Council and with Community Progress, Incorporated, the local anti-poverty agency, Delta Nu involved four units now functioning within the inner-city of New Haven. Troops are staffed by Delta Nu members and are sponsored by local corporations and community councils within the neighborhoods.

The program this past summer reached 70 boys, most of them Negro and Puerto Rican youths, living in the impoverished areas of the city.

The summer project was directed by Marshall Menefee, a C.P.I. professional, and by Eugene Durman and Charlie McCormack, both Yale undergraduates and Delta Nu members. The undergraduates were hired with the use of both federal and chapter funds, and were paid full-time salaries. It was felt that

the leadership staff described above would not provide the inner-city youth a leader with whom he could identify and who was indigenous to the boy's environment. This feeling led to the hiring of two high school students as assistants to the scouting program, both Negroes from the community.

The goals of the project were met fairly successfully. Boy leadership and team spirit were nurtured in the troop meetings and at summer camp, where the scouts were more or less on their own to "sink or swim." Meaningful parent participation, in an area which by its very nature encourages no parent participation, is a main goal of the project. Unless the parents of the boys were aware of the troops' activities and participated in them as they were able, scouting would become just another program planned **for**, but not **with**, the inner-city residents. Parents helped plan scouting activities and camping preparations, and helped run a successful car wash to raise money for a trip to Yankee Stadium at the end of the summer. Parents chaperoned the trip to see the Yankees and Red Sox play.

Cooperation with the community at large was an important factor. C.P.I. and the local scout council provided invaluable assistance and advice, and many community organizations provided funds, equipment

and meeting places for the scouts.

The project during the summer of 1968 will be expanded somewhat to include a larger number of boys, and hopes are high for the hiring of more local high school students to participate in the program. The project has indeed met its main goal—that of providing a continuous scouting program for youth living in an area where scouting "could never work."

'Skipper' Wilson Retires From BSA

Dr. Delmer H. Wilson, member of the National Board for many years, was honored by Alpha Phi Omega, the American Humanics Foundation and the Boy Scouts of America at a



dinner held on February 22 in Indianapolis. The occasion was his retirement from the professional ranks of Scouting, in which he served in many capacities before his appointment as National Director of Personnel.

Skipper received merited tributes from many sources. Dr. H. Roe Bartle, Past National President of APO, cited his leadership in the Fraternity and presented him with a diamond chipped APO pin as a token of the affection and regard in which he has been held by the Brotherhood. APO leaders present included Dr. Tom T. Galt, Dr. Lawrence L. Hirsch, Ed Andrews, George F. Cahill, M. R. Disborough, A. G. Spizzirri, Richard L. Tombaugh and the National Director. Brother Alden G. Barber, Chief Scout Executive, B.S.A., paid tribute to Skipper's career in Professional Scouting. Brother Zenon C. R. Hansen, President of Mack Trucks, Inc., was toastmaster.



HAMILTON HONORED . . . Brother Aubrey B. Hamilton, right, National Second Vice President and Legal Counsel for APO, receives the coveted Silver Beaver Award from James Lee Johnson, member of the National Executive Board, St. Louis area Council, B.S.A., as his wife Rosemary looks on. Brother Hamilton was awarded the Silver Beaver for distinguished service to boyhood.

Photo by H. E. Day



ALPHA CHI INFORMATION EXCHANGE

Need a new idea for a service project? Or does your chapter need suggestions or advice for a project it's already doing? Does the chapter ten miles away run something great and you can't get the hard facts on it? Whatever happened to those great ideas you picked up at the last sectional conference?

Alpha Chi at MIT has come up with a possible solution to problems of this kind. Called the Information Exchange, the service will provide your chapter, free upon request, copies of reports on projects—what they are, how they work, how you can do them. Alpha Chi requests all chapters who wish to share information of this nature to send in articles of 500 to 1,000 words; these will be reproduced and distributed. The venture can only be a great success if chapters with knowledge and experience are willing to share it with less fortunate ones. It isn't that hard to put your know-how down on paper.

Currently available are the following subjects: silk screening, UMOG,



Alpha Chi's Big Screw Contest, refreshments, Explorer Conferences, extended work week ends at Scout camps, carnival, ride service, and several others. Alpha Chi would welcome requests for specific information rather than all available. If a topic isn't listed, or you want new ideas, write them anyway—new ones will be added and might be just the ticket for you.

The intent of this exchange is to provide more detailed information than is normally included in the National Convention Service Exchange. In particular, chapters submitting articles should concentrate on ex-

BETA ZETA, University of Georgia, Athens, celebrated its Pearl anniversary (30th) with a banquet at the International Ballroom of the Hotel Dinkler Plaza in Atlanta. Shown here are: (L-R) E. Ross Forman, National President; Dewaine T. Norris, Beta Zeta President; Joseph Scanlon; Dean William Tate, U. of Georgia Dean of Men and Beta Zeta charter member; Barbara Daniels; and Sam Henley, Beta Zeta Past President. Also present were: Dr. Tom T. Galt, Past National President; Gerald M. Plessner, National Treasurer; and Dean Jerome Zeller, Dean of Students at Emory.

ANNIVERSARY BANQUET . . . Eta Chapter, Northern Illinois University, celebrated its 40th anniversary with a banquet honoring Eta Alumni. Left to right are: (seated) Sidney B. North, National Board of Directors; William K. Mitchell, Eta President; Dr. Ernest Hanson, N. I. U. Vice-President of Student Personal Affairs; Harold B. Johnson, Eta Alumnus; and E. Ross Forman, APhiO National President. (standing) Kenneth Weik; Lawrence W. La Fleur; Michael E. Polchopek; Clayton E. Mott; Rolf Fritz; Gaylen N. Larson; Thomas E. Woodstrup; William H. Brien; Roger A. Sherwood, former National Service Representative; and Joseph Scanlon.

planations and details rather than mere summaries.

The project ties in closely with the new National Project Cross File—contribute and use both. Address correspondence to:

Information Exchange
Alpha Chi Chapter of APO
W20-475
84 Massachusetts Avenue
Cambridge, Mass. 02139

New Pamphlet Helps Voting

Omicron Xi at Denison University has successfully completed a service for the campus that should prove useful all over the country.

They have compiled and published a *Voter Information Pamphlet* for campus elections. The pamphlet contains all pertinent information about student candidates for office. The price was low and the results were high and Omicron Xi received praise from students and administration.

Inquiries should be directed to: Voter Pamphlet, c/o APhiO, Box 72, Denison University, Granville, Ohio, 43023.

Notable Newsletters

NAME	CHAPTER	COLLEGE
APOKALT	Kappa Alpha	Lamar St. College (Tex.)
Intersection	Beta Sigma	Texas Tech
Alpha Alpha Bits	Alpha Alpha	U. of Illinois, Urbana
Arrowhead	Nu Psi	Montclair St. College (N.J.)
Epistle	Epsilon Epsilon	Missouri Valley College
Knight's Helmet	Beta Nu	Northeastern State (Okla.)
Disaster	Xi Delta	Texas A & M
NEWS AND VIEWS	Sec. 13	Miss. and Louisiana
Happenings	Sec. 17-A	W. Ky. and W. Tenn.
GASTAPO	Sec. 21-A	Georgia
DELTA EYE	Delta Chi	Texas A & I
RAG	Alpha Gamma	Purdue University
The Picayune	Pi Delta	W. Carolina University

Thousands of APhiO Brothers and Alumni across the country have interesting stories to tell about their work and other activities. Alumni Sketches is designed to reveal to you some of these Brothers and their work in their chosen field. For more detailed information we encourage correspondence with them.

ALUMNI SKETCHES

Brother David S. Mitchell has recently returned to the University of Massachusetts after a two and one half year work leave. He pledged in the Fall of 1960 and held several offices in Kappa Omicron at University of Mass. He was awarded Life Membership by KO and has taken an active part in Sectional affairs in both New England and Washington, D. C.

Brother Mitchell's story is one of the space age. He took leave to gain working experience in computers, with a research and development firm in Reston, Virginia, just outside of Washington.

The name of the computer is "Socrates," developed by SCOPE, Inc., for which he was a junior engineer.

His work at SCOPE involved the development of machines and techniques to recognize different types of patterns such as: letters of the alphabet, possible application, automatic address reader for mail sorting; fingerprints, criminology research; speech patterns, possible direct voice command of computers; and medical slides, possible automated diagnosis of x-rays or tissue samples.

Another application along this line is photograph identification. "The machine was set to 'learn' by class various photographs of those on the staff. When it was set to 'recognize,' and shown some new views of these people, its ability to recognize them and respond to the appropriate class number was almost uncanny," Brother Mitchell said.

David S. Mitchell
382-D Northampton Rd.
Amherst, Mass. 01002

Dis 'n' Data

The long-awaited Sweetheart Pin is now available. Orders should be sent directly to L. G. Balfour Company to avoid delay. Simply add Sweetheart Pin to the bottom line of the regular jewelry order form. Price, \$11.

A sharp rise in membership brought a sharp rise in chapter activities for **Nu Mu**, University of Minnesota, Duluth. The winter pledge class spent an afternoon tobogganing with a group of emotionally disturbed children and then took them to dinner. Their new twist to helping at registration is to keep an up-to-the-minute list of classes that have been closed out posted at the entranceway. For kicks they've been showing Laurel and Hardy movies during lunch hours.

Eta Psi, Chico State College, California, will play an active role in the 50th annual Pioneer Day Parade in May. They're sponsoring a Korean orphan through the Save the Children Federation, and are donating a large sports activities sign for the downtown area. The next thing you know, they'll be sponsoring a car rally.

Pi, Kansas State University, Manhattan, has come up with an excellent idea for an outdoor campus bulletin board at a low cost, and a way to make it pay for itself. Write c/o the Student Activities Center, Zip 66504. When asked who the big guy was standing next to him, "Freddy Ferguson" answered, "He's my people!" Brother Kirk Kelley is working his way through college as a ventriloquist.

Mu Delta, College of Great Falls, Montana, sent us a long list of very worthwhile projects from the Northwest which included: the Peace Corps, a treasure hunt, dances, sports activities, a blood drive, tours and registration. But tell us, Brothers, what's a Friendship Rock? (Box 21, Zip 59401.)

Alpha Rho is at it again. They've come up with an interesting formula for figuring future membership participation. Full details are in the March 12th ARAPOUT News, or write c/o Box 207, U. of Texas Union, Austin 78712.

Nu Tau, San Fernando Valley State College, reports that Luong Ngoc Xin, their adopted child through the Foster Parent's Plan, has been able to return to school. The \$8 a month that Nu Tau sends provides many things including clothing, supplies and special medical care.

Mu Nu, Western Illinois University in Macomb, celebrates its 10th Anniversary in May. The first 10 have provided many services for campus and community: \$2,300 for USO, an outdoor chapel for a Scout camp, sandbagging the Mississippi during floods, school elections, campus tours, blood drives and many more. Happy Tenth!

Alpha Kappa, University of Southern California, and **Chi**, U.C.L.A., recently sponsored the first of what is hoped will be an annual track meet to determine the relative strengths of the social fraternities at the two schools. On their home field U.S.C. ran away with the meet. Chi and U.C.L.A. are looking forward to next year.

Delta Theta stirred up a lot of interest on the University of Louisville campus during their safety week campaign. They displayed photographs of fatal accidents on a 4'x24' bulletin board. A grim reminder that "Life Will Go on Without You." Drive Safely.

Beta Lambda, Indiana State University, highlighted a day of work at the university's recreation center with canoe races. Pledges won! Sorry 'bout that. After clearing areas for students to fish, they built a stone retaining wall. They're also building a solid 10-point program of service.

Xi Kappa, Fairleigh Dickinson University, Madison, has had good response to their Wednesday night dances which are held to raise funds for their Orphan's Day picnic in May. They invite 150 orphans for a day of pony rides, cartoons, magicians, swimming, hot dogs, hamburgers and soft drinks. They've been able to get big-name groups either gratis or at reduced rates by assuring them the money goes to the Picnic Fund.

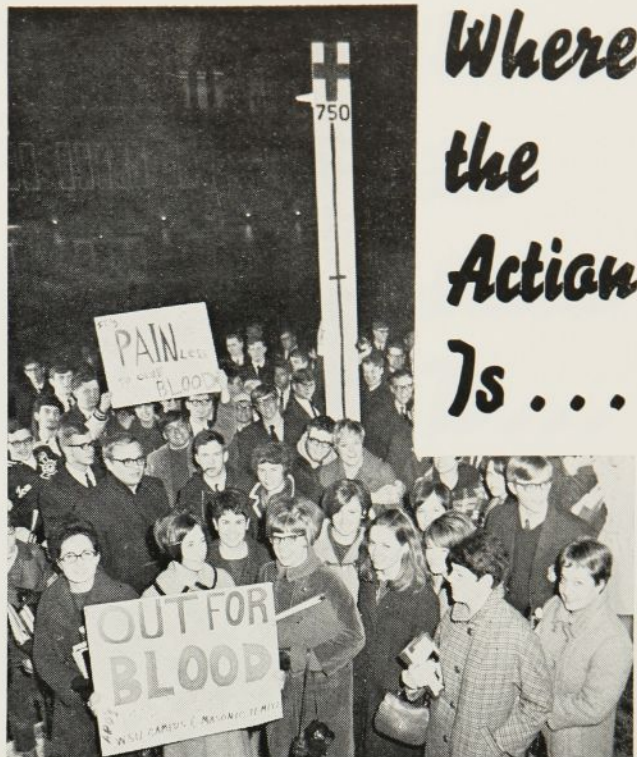
Mu Xi, High Point College, North Carolina, compiled more than 300 man-hours in nine days at the H.P.C. Infirmary during a recent and violent flu epidemic. They acted as orderlies and aided in the care of isolated patients. They submitted a complete list of projects and service hours showing they have indeed had a service-full year.

Zeta Kappa, Bowling Green State University, Ohio, has raised \$1,000 for charity this year. The chapter voted to return the entire amount over to the Cleveland office of the Muscular Dystrophy Association for use at their summer camp. Keep up the good work!

Theta Tau, University of Texas, Arlington, sent a flag of the Lone Star state in answer to a story in a Fort Worth newspaper. The flag of a Tangle boat patrolling the Vietnam waters had become battle worn.



WORK WEEK END . . . One week end each semester the pledges and actives of Beta Sigma, Texas Tech, Lubbock, plan and carry out service projects at the local Scout camp. Projects range from soil conservation, to campsite cleaning, to pipe laying and painting buildings. The day's work is climaxed by an evening meal prepared by the chapter cooks. They spend the night at the camp and then hold sunrise worship services before returning to campus.



*Where
the
Action
Is . . .*



OUT FOR BLOOD . . . Eta Lambda, University of Wisconsin, Eau Claire, received a lot of publicity and blood in their campaign. Eta Lambda challenged the 40,000 citizens of Eau Claire to donate as much blood as the 6,500 students on campus. The highly successful drive brought in more than 750 pints of blood for the Red Cross.

(Eau Claire Leader-Telegram Photo by John Lindrud)

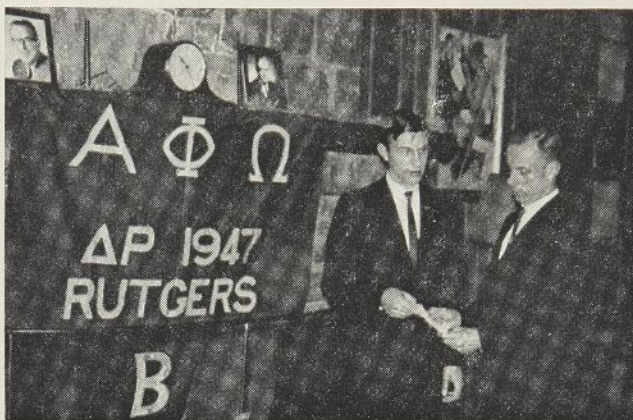
"NOT SINCE the Tortoise and the Hare" has there been a greater race than the Northeastern Invitational Turtle Tournament held during the Campus-Community Carnival at the University of Connecticut. The C. C. C. has been sponsored by APhiO's Delta Sigma Chapter for 20 years and has raised nearly \$120,000 for charities. It's the largest annual fund-raising drive in the state. The three day gala event is full of contests and a parade and culminates at the University Field House which is converted to a midway for booths and games of skill. Note the hamster in "turtle garb."



XI KAPPA, Fairleigh Dickinson University at Madison, took on the "can do" spirit as they filled one Volkswagen and a truck with more than 2,000 cans of goods during their Easter Food Drive for the local welfare board. The Brothers are putting together a tour booklet about F.D.U., Madison, which was the multi-million dollar estate of the late Florence Vanderbilt Twombly.

Where
the
action
... is

BEAUTIFUL VERONICA, Brother Mark Biebighauser of Theta Tau, University of Texas, Arlington, hams it up in a skit presented at the Terrell State School for the Mentally Retarded. Theta Tau put weeks of work into the show which was specially geared for the audience. Clowns, sing-song activities and musical combos made it an evening that will be remembered.



DELTA RHO, Rutgers University, donated \$300.00 to the Middlesex Council, B.S.A., for their capital fund campaign. Here Brother Anthony Peters, Past President, left, presents the check to Scout Executive and Brother Kenneth Davis. Due to a very busy service activity schedule, Delta Rho is considering turning a few of their proven successful projects to other service minded organizations, so that they can continue to build the services for Rutgers.



SERVICE . . . to the chapter is performed by the Brothers of Kappa Chi, Creighton University, Omaha, as they help their advisor move into a new home. Left to right: (front) Mike Mas-sara, Rick Hoffman and George Males; (back) Ed Maag and Mike Riss.



RHO THETA . . . Miss Kay Bethel, Campus United Appeal Chairman, receives a \$75 check from Brother Fred Oethers. The money is the result of the first UMOC to be held at Capital University in Columbus, Ohio. The Brothers feel that the experience they have gained this year will enable them to have a bigger and better contest next year.



ONE BIG PUSSY CAT . . . Brothers of Epsilon Pi, Southern Illinois University, Edwardsville, have obtained a 65-pound, 7-month-old female cougar for the SIU mascot. Brothers of Delta Omega, University of Houston, helped obtain the 4 ft. mountain lion after contacts at the Con-Con. Also known as puma, "Daniel" as she is called, will be housed at a local animal hospital until permanent arrangements can be made for her care. Daniel will eat about 25 pounds of meat a week and is expected to weigh more than 100 pounds when grown. Warren Stookey, APO National Board of Directors and Walt Parrill, Epsilon Pi, flew to Texas to get the cat.

Where the Action Is . . .



LAMBDA OMICRON . . . West Virginia University obtained and presented the ship's bell from the Armored Cruiser USS West Virginia to the University. Shown in front of the bell are: (L-R) Daniel Blosser, LO President; Dr. Roger Chatain, chapter advisor; Dale Steager, Project Chairman; and Bill Liston, Co-chairman.

Photo by Stoner

PLEDGE-ACTIVE PROJECT . . . Beta Psi, Southeast Missouri State, spent three days clearing nature trails and cleaning out areas for campsites at the newly established Otahki Girl Scout Camp. They put in more than 500 man-hours on the project.



ETA SIGMA, Illinois College, has been carrying out a long-range Scouting that started in the fall of '66. Brother Tom Giffen is shown here with the troop and their camporee ribbons won at the outing in Arkansas. The boys are all from the Illinois School for the Deaf in Jacksonville, Illinois.



SIGMA THETA Brothers Neil Johnson and Pat Houlihan of St. Mary's College, Winona, Minn., operate a booth at the Mardi Gras Carnival and Dance. This year's event raised more than \$1,100 for Catholic Missions.



OMICRON ZETA . . . Brothers Jim Thomas (I), Bob Ward, and Mike Owens were a few of the Brothers at Cal-State, Hayward, that provided a courtesy shuttle service for many of the world famous athletes that participated in the National AAU Indoor Track and Field Championships held in the Oakland Coliseum in February. The cars were provided by Hertz.

Where
the
Action
... is

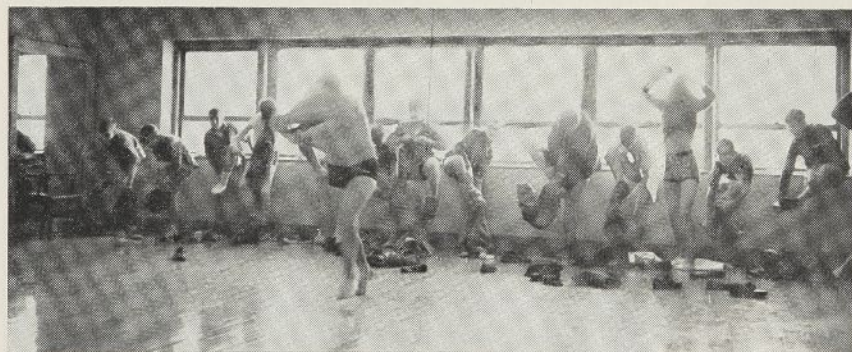
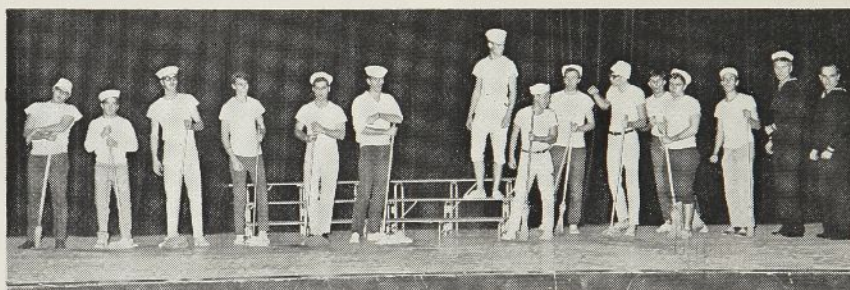


SIGMA BETA . . . University of Redlands, California, sponsored a Training Encampment for all the Scout troops in the council. Here, Brothers and Scouts alike, listen to instructions as they prepare to enter the Order of the Arrow lodge.

GAMMA OMICRON, Queens College, went ape this year in raising money for charity. Their UMOC raised \$1,570.82, the highest ever at Queens College. Besides a gorilla costume, the Brothers used 10" balloons with the lettering, VOTE UMOC, ALPHA PHI OMEGA, and the traditional symbol. The balloons are available to other chapters. Photo by Charles Chin



"THERE IS NOTHING LIKE A DAME" . . . sing the Brothers of Kappa Alpha Chapter at Lamar Tech, Beaumont, Texas, during the annual Delta Zeta Song Festival. Led by Brother Gabriel Tan, they took first place in the fraternity division. (Photo by J. F. James)



PI UPSILON . . . Watching 15 boys strip to trunks in 20 seconds can be hilarious, but it's one of the benefits a chapter can derive from helping Scouts with water merit badges. Brothers at Drew University, Madison, rented the school pool, obtained the services of a Red Cross Instructor and helped Scouts of the Morris-Sussex Council.

THEY GAVE THEIR ALL . . . Beta Theta, University of Wisconsin, Madison, show graphic support for one of their major spring service projects: a clothes drive for depressed areas of Appalachia. Beta Theta co-ordinated the drive with Circle K on the Madison campus and several other APhiO chapters in Wisconsin.





"The Golden Book of Life Membership" of Alpha Phi Omega continues to grow. Since our last published list, more than 600 have added their name.

Life Members can serve in many capacities, as members of the National Board, Sectional Chairmen, Sectional Representatives and Chapter Advisors.

Daniel G. Roblyer.....Eta Psi
Charles W. Hively.....Pi
Sylvan Leabman.....Mu Eta
Daniel W. Young.....Pi
Dale R. Jordan.....Epsilon Epsilon
Ronald J. Turner.....Beta Delta
William A. McMillan, Jr.....Nu Iota
Gerald L. Howard.....Beta Mu
Dr. Paul Beckman, Jr.....Epsilon Phi
C. Thomas Gartley.....Mu Tau
Wayne D. Halstead.....Mu Tau
John W. Hammel.....Alpha Iota
Arthur C. Polansky.....Alpha Chi
Clarence W. Cole.....Alpha Rho
Stanley J. Stephens.....Eta Psi
Alvin H. Arnold.....Mu Chi
William P. Whitfield.....Delta Beta
Richard C. Handel.....Gamma Pi
Thomas R. Wilcox.....Gamma Pi
Douglas G. Trout.....Alpha Upsilon
Edward W. Baker.....Iota Mu
Thomas F. Valiga, Jr.....Mu Nu
Allen F. Salmi.....Iota Chi
Donald A. Kiah.....Zeta Phi
Kenneth E. Spann.....Zeta Phi
James H. Longley.....Kappa Epsilon
William P. Davis.....Beta Nu
Arnold S. Feldman.....Omicron
Everett G. Pyle.....Epsilon Upsilon
Roger W. Rauch.....Xi Lambda
W. Berry Murray, Jr.....Kappa Tau
John R. Zizelmann.....Alpha Rho
Wayne G. Harper.....Mu Tau
James R. Logan.....Rho Nu
C. David Robinson.....Zeta Rho
Roy F. Pleis.....Epsilon Psi
Thomas J. Condon.....Omicron Eta
Alan M. Goldberg.....Alpha Chi
Harvey J. Bullock, Jr.....Zeta Phi
Steven M. Kennedy.....Delta Beta
John R. Parton.....Delta Beta
Bernard R. Meinert, Jr.....Xi Omega
John W. Forbis, Jr.....Beta Psi
Lynn A. Goehringer.....Mu Lambda
Wayne A. Hodges.....Rho Nu
Mark N. Laschever.....Gamma Pi
David B. Senseney.....Iota Mu
William A. Smith.....Iota Omicron
Robert L. Barry.....Gamma Theta
Louis Ramirez, Jr.....Delta Chi
Edward W. Stuart.....Iota Xi
Reinholt J. Wasemiller.....Omicron Mu
Cyle S. Ferguson, Jr.....Theta Mu
Eugene O. Eagle, Jr.....Iota Lambda
Marc P. Richman.....Mu Eta
Richard M. Earne.....Gamma
Thomas N. Barnum.....Beta Beta
Terry L. Schmidt.....Zeta Kappa
George M. Brown III.....Iota Phi
James S. Yearwood.....Pi Xi
Samuel D. Gross, Jr.....Iota Alpha
Ronald G. Aldridge.....Beta Beta
Scott B. Luce.....Pi Mu
Stanley R. Frager.....Chi
Michael A. Traab.....Pi Rho
Ralph J. Walters.....Pi Rho
Richard R. Allen.....Pi Epsilon
Terry W. Goodwin.....Nu Alpha
James D. Kniker.....Alpha Rho
Perry E. Hewitt.....Iota Chi
Dennis E. Reeves.....Xi Psi
Howard H. Whitehurst.....Xi Tau
George L. Finch.....Lambda Xi
James L. Nicholas.....Zeta Nu

Dale L. Darks.....Alpha Psi
Donald C. Majka.....Theta Tau
Thomas E. Oglesby.....Nu Iota
Gregory A. Hendel.....Zeta Kappa
Rex E. Pielstick.....Omicron Theta
Carl W. Eckblom.....Nu
Jerry V. McDonald.....Beta Delta
Joseph H. Green.....Delta Gamma
Adolph J. Uryniak II.....Eta Mu
Leon D. Gordon.....Mu Nu
Ralph S. Pinkus.....Delta Zeta
C. Eugene Lake.....Beta Sigma
John B. Barclay.....Rho Nu
Richard J. Keogh.....Kappa Omicron
Jose A. Morales.....Omicron Nu
Dave D. Morgan.....Beta Sigma
Robert G. Sparks.....Gamma Nu
Samuel E. Thatcher, Jr.....Alpha Pi
Carl F. Kiehler.....Mu
Morton Lore, 2nd.....Omicron Omicron
Dennis G. Tyson.....Gamma Phi
Arthur H. Long, Jr.....Zeta Lambda
Wayne Reynolds.....Omicron Omicron
Martin Morris.....Delta Rho
Stanley J. Kopecky.....Zeta Nu
Carey M. Clark.....Xi Sigma
David H. Maitland.....Sigma Eta
Ralph S. Grimes.....Xi Alpha
Richard L. Leeds, Jr.....Xi Alpha
Robert L. Brunning.....Xi Alpha
Gamil E. Shaw.....Xi Alpha
Hubert M. Harrison.....Beta Nu
David G. Ferguson.....Delta
Hartwig A. Schulze.....Delta
Earnest J. Zeller.....Delta Kappa
Barry C. Robinson.....Gamma Lambda
Leonard V. DiRago.....Epsilon Iota
Ken W. Sargent.....Delta Nu
James N. Clarke.....Iota Sigma
James F. Moore III.....Delta
Ronald Nabors.....Delta
Gerald A. Ney.....Epsilon
Kenneth L. Packer.....Xi Rho
William K. Cheverton.....Sigma Tau
Ronald E. Pierson.....Alpha Iota
Ted J. Hanes.....Iota Rho
Elliott H. Kone.....Delta Nu
Rino Bianchi.....Iota Nu
Richard Q. Cornali.....Kappa Epsilon
F. F. Cunningham, Jr.....Zeta Kappa
James M. Green, M.D.....Beta Beta
David P. Hayes.....Epsilon Mu
James P. Hickey.....Eta Mu
Walter T. Snipes.....Tau Beta
William F. Baker.....Beta Sigma
Anthony J. Moskal.....Sigma Eta
M. Steelman III.....Omicron Omicron
Thomas F. Barnawell.....Iota Rho
John R. Glass, Jr.....Sigma Beta
Stanley Barry.....Zeta Phi
Clinton W. Chapman.....Zeta Phi
Richard N. Nixon.....Zeta Phi
Halsen V. Eagleson.....Zeta Phi
Royle L. Givens, Jr.....Kappa Theta
Samuel T. Gladding.....Kappa Theta
Allen E. Green.....Zeta Phi
Monteria Ivey, Sr.....Zeta Phi
Raymond G. Kneip.....Zeta Omicron
William L. Parkerson.....Zeta Phi
William J. Crielly, Jr.....Sigma Eta
Harold E. Freund.....Zeta Nu
Robert R. Jackson, Jr.....Theta Xi
Donald W. Lee.....Nu
Barry G. Casterline.....Omicron Delta

John H. Hallman.....Iota Omicron
Fred C. Lauer.....Zeta Kappa
William Strasser.....Gamma Iota
Stuart A. Smith.....Iota Omicron
Michael M. Garlinghouse.....Zeta Nu
Clebune L. Webb, Jr.....Theta Sigma
Kenneth P. Davis.....Mu Mu
Richard J. Emde.....Zeta Nu
Robert S. Gwin, Jr.....Sigma Eta
Walter A. Halama.....Zeta Nu
Ronald J. Leban.....Zeta Nu
John E. Peters.....Zeta Kappa
John A. R. Walsh.....Sigma Eta
Alexander B. Gates.....Delta Phi
Charles F. Moyer.....Theta Theta
Albert Matzelle.....Xi Rho
Steven N. Riewaldt.....Zeta Kappa
Kenneth S. Sherman.....Theta Beta
Michael J. Stewart.....Delta Gamma
Tomme R. Actkinson.....Alpha Rho
Francis X. Bachhuber.....Eta Mu
Bernard F. Shelley.....Mu Tau
David B. Singer.....Gamma
Robert J. Smullin.....Sigma Xi
Ferrell A. Hart.....Beta Nu
Stewart W. Richards.....Eta Mu
Robert M. Sassano.....Iota Omicron
Daniel T. Lingle.....Eta Iota
Harold D. Murphy.....Beta Delta
Arthur C. Stickney.....Sigma Xi
James D. Cunningham.....Zeta Nu
David J. Frost.....Delta Sigma
Robert W. Wyman.....Sigma Xi
Terry W. Welcomer.....Mu Eta
Thomas R. Caltagirone.....Xi Tau
Ronald A. Chandler, Jr.....Pi Zeta
William J. Farina.....Mu
Harry C. Harbaugh.....Iota Omicron
Robert J. Kells.....Eta Mu
Gerard J. Kennedy, Jr.....Nu Psi
William A. Kovaleski.....Zeta Nu
Robert J. Lawrence Jr.....Sigma Eta
Alfred J. Liotta.....Xi Rho
Roger C. Power.....Omicron Theta
Kenneth R. Baremore.....Beta Psi
James E. Bissey.....Nu Lambda
Robert E. Greene.....Nu Lambda
Theodore R. Hagans, Jr.....Zeta Phi
David H. R. Lewis.....Nu Lambda
Eric R. Shimer.....Nu Lambda
James R. Sprague.....Rho Xi
Robert L. Steward.....Gamma Beta
Thomas H. Wiegner.....Nu Lambda
Michael A. Aquino, Jr.....Psi
David C. Brown.....Beta Psi
James A. Cunningham.....Iota Omicron
Rodney J. Decamp.....Alpha Gamma
George L. Dunn.....Mu
Robert E. Palmer.....Zeta Theta
William B. Rugh.....Lambda Nu
Michael D. Roth.....Nu Tau
Michael C. Strother.....Alpha Gamma
Harry Seidman.....Zeta Omicron
Robert R. Scofield.....Iota Omicron
Leland H. Langbein.....Omicron Theta
Randall B. Walter.....Alpha Xi
Will Channon.....Pi
Carrol D. Willis.....Beta Sigma
Leland C. Forland.....Epsilon Epsilon
John J. Mills.....Gamma Zeta
Donald A. Schroeder.....Nu Tau
R. Nicholas Zingaro.....Lambda Kappa
Glenn C. Canavan.....Delta Psi
John T. Adams.....Gamma Tau
Randolph W. Armstrong.....Nu Nu
Robert C. Barkhurst.....Pi Beta
David B. Jarrett.....Mu Lambda
Alan W. Lubenow.....Nu Alpha
Arthur J. Swanson, Jr.....Nu Alpha
Richard M. Warner.....Zeta Omicron
Robert L. Dabbs.....Epsilon Alpha
Thomas G. Howenstine.....Mu

NEW LIFE MEMBERS

Charles R. Mann.....Iota Beta
 John R. McNeff, Jr.....Nu Alpha
 William H. Oliver.....Rho Mu
 Richard V. Reed.....Beta Lambda
 Bruce G. Reichow.....Theta Nu
 Richard W. Wien, Jr.....Alpha Gamma
 Dennis W. Baker.....Zeta Theta
 Christopher M. Fiege.....Iota Alpha
 James F. Kuder.....Zeta Theta
 Robert J. Kuhar.....Zeta Theta
 J. Robert Pendleton.....Beta Sigma
 Ellis C. Regini, Jr.....Theta Rho
 Richard E. Blouse, Jr.....Eta Iota
 John M. Bray.....Iota Alpha
 Stan Defenbaugh.....Delta Chi
 John T. Granato.....Mu Tau
 John E. Hanke.....Pi Theta
 Robert J. Harris.....Iota Lambda
 Melvin L. Jackson.....Mu Gamma
 Richard D. Jordan.....Iota Lambda
 Bruce G. Scherer.....Beta Sigma
 Arthur A. Schwenger.....Beta Theta
 Stephen C. Sellett.....Alpha Upsilon
 Robert B. Voorneveld.....Theta Sigma
 John W. Craft, Jr.....Delta
 Don W. Ellis.....Delta
 James D. Harris.....Delta
 Howard W. Hart.....Delta
 Richard L. Shaw.....Delta
 William A. Watts III.....Delta
 James A. Weed, Jr.....Delta
 Robert E. Eickmann.....Alpha Rho
 Frank J. Houzvicka II.....Alpha Rho
 Richard A. Nicholas.....Alpha Rho
 Chester R. Richey, Jr.....Alpha Rho
 Dan K. Seilheimer.....Alpha Rho
 Stephen M. Vassberg.....Alpha Rho
 John L. York, Jr.....Alpha Rho
 Paul J. Aurelio.....Pi Tau
 Bruce P. Bannerman.....Mu Tau
 Carl Frank Bosteels.....Pi Beta
 Eugene C. Edgerly.....Iota Chi
 Marc H. Flicker.....Iota Omicron
 Gordon W. Haack, Jr.....Iota Beta
 Paul G. Kayatta.....Omicron Theta
 Marcus L. McDonald.....Delta Alpha
 John W. Sheehan.....Iota Sigma
 Michael J. Sherry.....Xi Xi
 Ralph E. Shope, Jr.....Iota Omicron
 Lee Sinovoi.....Mu Tau
 Arthur H. Tepfer.....Delta Rho
 William M. Truan, Jr.....Tau Epsilon
 Henry B. Webb.....Sigma Gamma
 Jerrell B. Fester.....Beta Sigma
 Philip O. Hampton.....Beta Psi
 Joe L. Radican.....Beta Psi
 E. Gordon Doggett, Jr.....Xi Nu
 Harold T. Myler.....Mu Tau
 Alan D. Schmetzer.....Mu
 Gregory K. Smith.....Sigma Beta
 Robert E. Swalve.....Pi Beta
 Douglas P. Charles.....Delta Xi
 Richard C. Finkle.....Xi Rho
 Michael Finnegan.....Gamma Theta
 Jeffrey G. Kohr.....Gamma Theta
 Allen O. Morris.....Beta Delta
 Thomas W. Scattergood.....Zeta Sigma
 John V. Sweden.....Lambda Delta
 Don R. Grouth.....Beta Pi
 Donald A. Delagrange.....Delta Sigma
 Douglas B. Joyner.....Delta Sigma
 Robert J. Krueger.....Delta Sigma
 David R. Scott.....Delta Sigma
 Eric L. Stone, Jr.....Delta Sigma
 Reginald P. Butts.....Omicron Eta
 Gregory L. Eisenhart.....Iota Omicron
 Gary E. Fisher.....Nu Phi
 Darryl S. Jeffries.....Mu Eta
 Samuel A. Jervis, Jr.....Pi Beta
 Lyle E. Krebsbach.....Epsilon Upsilon
 Bob Natt.....Gamma Omicron

Richard J. R. Parkinson.....Delta Rho
 Kurt W. Regling.....Epsilon Upsilon
 Dean A. Bash.....Beta Kappa
 Robert G. Bradley.....Alpha Alpha
 Ronald L. Burk.....Alpha Upsilon
 Douglas G. Conley.....Mu Tau
 Larry E. David.....Mu Tau
 Ellwyn C. Englof.....Alpha Alpha
 Raymond D. Engelke.....Epsilon Nu
 Alton B. Fitzpatrick.....Tau Epsilon
 John R. Griggs.....Beta Pi
 Russell Hauser, Jr.....Epsilon Epsilon
 Paul E. Johnson.....Mu Tau
 George W. Jones.....Mu Lambda
 David A. Kay.....Mu Tau
 R. Wayne Martin.....Beta Rho
 Arthur G. Nuhrah.....Pi Xi
 George Ripplinger, Jr.....Alpha Alpha
 Roby P. Shuffler.....Theta Rho
 Karl J. Thornbrugh.....Alpha Alpha
 Robert L. Tucker.....Mu Tau
 David F. Wolfrum.....Zeta Nu
 Luther L. Barber.....Alpha Chi
 Barry J. Blumenfeld.....Alpha Chi
 Michael A. Bromberg.....Alpha Chi
 Jonathan L. Campbell.....Alpha Chi
 Steven B. Lipner.....Alpha Chi
 Robert H. McCall.....Alpha Chi
 W. Donald Rolph III.....Alpha Chi
 Timothy J. Romlein.....Alpha Chi
 Kevin D. Stoddart.....Alpha Chi
 Robert M. Young.....Alpha Chi
 Hugh P. Rostad.....Beta Sigma
 Robert J. Stern.....Zeta Beta
 James H. Sleezer.....Epsilon Epsilon
 Frederick Schaljo, Jr.....Beta Psi
 Bruce E. Peters.....Pi
 Gerald Novik.....Omicron Theta
 Donald J. Meyer.....Alpha Alpha
 George K. McDowell.....Zeta Sigma
 Nicholas L. Loesch.....Theta Tau
 Charles T. Larsson.....Omicron Theta
 Everett J. Koontz.....Mu
 Thomas F. Harding.....Lambda Delta
 Charles N. Goes.....Epsilon Epsilon
 Charles L. Fischer.....Omicron Theta
 Richard N. Renfrow.....Beta Psi
 William H. Clayton, Jr.....Theta Tau
 Pedro J. Rivera.....Omicron Nu
 Ronald C. Berman.....Alpha Alpha
 Walter S. Anderson.....Epsilon Nu
 John A. Tuzzolino.....Pi Tau
 Walter Troy.....Nu Alpha
 Robert Snoke.....Gamma Psi
 James L. Powell.....Lambda Nu
 Darrell R. Wanner.....Nu Tau
 Alan Abramovitz.....Delta Sigma
 Floyd B. Conlin, Jr.....Delta Sigma
 William E. Clark.....Eta Chi
 James W. Shucart.....Beta Psi
 James C. Seidl.....Epsilon Upsilon
 Charles A. Rohleder.....Beta Pi
 Allan Rutherford.....Nu Tau
 Warren A. Ronneberg.....Eta Psi
 Robert A. Riker.....Omicron Theta
 Caleb W. Page, Jr.....Xi Sigma
 Robert N. Abarno.....Kappa Theta
 Dan E. Abernathy.....Kappa Theta
 Beverly T. Beal.....Kappa Theta
 Charles C. Caskey.....Kappa Theta
 F. P. Donaldson, Jr.....Kappa Theta
 Bobby J. Ervin.....Kappa Theta
 Robert L. Ferrell, Jr.....Kappa Theta
 Wade S. Owen.....Kappa Theta
 Archie L. Renegar.....Kappa Theta
 James S. Slone.....Kappa Theta
 Charles E. Webb.....Kappa Theta
 Gary Wilson.....Kappa Theta
 Stephen A. Gray.....Sigma Beta
 Carl S. Ledbetter.....Sigma Beta
 John H. Manion.....Sigma Beta

Mansour K. Shalhoub.....Sigma Beta
 Gifford M. Smith, Jr.....Sigma Beta
 Fahad I. Al-Sultan.....Sigma Beta
 Robert E. Thomas III.....Sigma Beta
 Richard T. Witteman.....Sigma Beta
 Ransom B. Woods III.....Sigma Beta
 Lawrence W. Bily.....Lambda Delta
 Clark W. Gellings.....Lambda Delta
 Robert W. Gemra.....Lambda Delta
 Thomas J. Gibson.....Lambda Delta
 R. R. Hoffman, Jr.....Lambda Delta
 Paul E. Reed.....Lambda Delta
 Dr. Arthur E. Hughes.....Theta Rho
 Bernard P. Krafzig.....Alpha Chi
 Avi Ornstein.....Alpha Chi
 Wayland E. Melton.....Epsilon Epsilon
 Donald E. Thompson.....Epsilon Epsilon
 Lewis H. von Herrmann.....Delta
 Jerry D. Missildine.....Delta
 Benny J. Pritchett.....Delta
 William C. Wagers.....Delta
 Alvis F. Wales, Jr.....Delta
 Joseph B. Gerwood.....Delta Gamma
 Col. Cecil C. Helena.....Delta Gamma
 Robert W. Ziegler.....Delta Gamma
 Kenneth A. Poling.....Gamma Pi
 Gilbert O. Sanders.....Theta Sigma
 Charles L. Houston, Jr.....Rho Beta
 Carl R. Larrick.....Zeta Delta
 William N. Warner.....Zeta Delta
 Claude B. Baker, Jr.....Zeta Nu
 Nolan L. Cheatham II.....Epsilon Pi
 Kenneth A. Goldberg.....Theta Chi
 Gerald L. Harris.....Rho Nu
 Nichol C. Ivey.....Delta Xi
 Thomas F. Lutyens.....Sigma Gamma
 Charles R. Moffett.....Alpha Upsilon
 Charles M. Musgrove.....Delta
 William E. Rorer, Jr.....Pi Omicron
 Wilbur S. Strong.....Theta Rho
 John M. Trotti.....Iota Mu
 Wallace M. Barnes III.....Iota Mu
 Larry M. Ernst.....Iota Mu
 Horace P. Ford.....Iota Mu
 Gary A. Vanderpol.....Iota Phi
 Richard S. Young.....Zeta Nu
 James W. Brooks.....Tau Iota
 David L. Burgess.....Pi Beta
 Raymond L. Hayes III.....Tau Epsilon
 Gerald A. Henricks.....Beta Nu
 Frank R. Kubicek.....Beta Nu
 David J. Luchefeld.....Epsilon Pi
 Roland G. Alger.....Epsilon Upsilon
 Donald J. Berchtold.....Rho Chi
 R. W. Turner.....Tau Iota
 James R. Burns.....Beta Nu
 John A. Cramer.....Zeta Omicron
 William R. Faulkner.....Xi Delta
 Jeffrey A. Fishman.....Omicron Eta
 Peter J. Grace III.....Zeta Theta
 James L. Hornbeck, Jr.....Mu Tau
 John Koenig, Jr.....Xi Rho
 Ando Merendi.....Delta Rho
 Frank T. Middleton.....Omicron Theta
 John E. Overbeay.....Alpha Iota
 Gary W. Page.....Xi Sigma
 William K. Knipping.....Lambda Delta
 Charles M. Levan.....Epsilon Epsilon
 Stephen Benos.....Zeta Kappa
 William L. Pepper.....Omicron Eta
 Paul H. Shuffler.....Iota Lambda
 James E. Dudley.....Delta Alpha
 Zalmon Pober.....Zeta Theta
 Edward A. Luke, Jr.....Alpha Rho
 Gerald R. Joiner.....Rho Nu
 John R. Morris.....Lambda Xi
 Archie M. Croom.....Alpha Rho
 Paul S. Gingrich.....Alpha Rho
 Frank B. McClenny.....Delta Omega
 Derek A. Hankins.....Delta Omega
 Richard W. Plant.....Delta Omega
 James S. Bowen, Jr.....Rho Zeta
 William J. Speizman.....Epsilon Mu
 Stephen R. Klein.....Epsilon Mu

NEW LIFE MEMBERS

Stephen E. Harris.....Epsilon Mu
J. Lawrence MacMillan.....Epsilon Mu
Eddy H. Huang.....Epsilon Mu
W. W. Moorhouse, Jr.....Beta Sigma
Jo G. Noel.....Alpha Delta
David I. Bush.....Eta Psi
Larry E. Lewis.....Psi
George E. Lewis.....Alpha
H. Frank Gay, Jr.....Delta Kappa
Gene W. Majors.....Rho Gamma
Timothy J. Boyle.....Rho Gamma
Robert J. Hartsuyker.....Rho Gamma
Michael Donoho.....Nu Nu
O. Clifton Bower.....Mu Tau
Steven M. Selzer.....Theta Chi
Michael S. Sussman.....Theta Chi
Charles G. Hudson III.....Sigma Epsilon
Michael H. Lomker.....Gamma Psi
Oliver M. Evans III.....Theta Rho
James W. Pate.....Delta Beta
George W. Lawton.....Theta Tau
Norman R. Bash.....Zeta Kappa
John P. Derr.....Theta Tau
Steven R. Rampton.....Theta Mu
Alan D. Davis.....Delta Rho
Brian K. Boardman.....Beta Theta
Curtis W. Rosler.....Lambda Alpha
Col. E. R. Mattice.....Lambda Alpha
Dr. D. J. Nicholson.....Lambda Alpha
Paul R. Scott.....Xi Nu
Robert Dell.....Zeta Upsilon
Sterling H. Moore.....Omicron Phi
Robert S. Craig.....Pi Epsilon
James T. Thompson.....Delta Tau
Harold S. Zimmerman.....Iota Lambda
David F. Thomson.....Iota Omicron
Lewis M. Finkel.....Zeta Theta
Thomas M. Elmore.....Kappa Theta
Roger A. Hull.....Kappa Theta
J. L. McCullough.....Kappa Theta
Walter R. Langston, Jr.....Xi Nu
Peter D. Kleven.....Xi Nu
Richard D. George.....Alpha Beta
David W. McCoy.....Alpha Beta
William R. Keene.....Nu Tau
Dennis L. Vanderpol.....Iota Phi
Richard A. Robinson.....Pi Beta
Daniel C. Curtis.....Gamma Kappa
Jerry S. Berger.....Chi
James R. Santo.....Delta Rho
Thomas R. Jones.....Xi Psi
John M. Bentley.....Eta Omega
David N. Bosley.....Omicron Beta
John J. Roemer, Jr.....Gamma Psi
R. Stephen Fulmer.....Gamma Psi
William D. Lilley.....Sigma Xi
Mark F. Riddle.....Delta Xi
James G. Francis.....Epsilon Psi
Chris A. Johnson.....Epsilon Psi
Donald A. McElroy.....Eta Psi
Milton W. Clark.....Eta Psi
Michael R. Halldorson.....Eta Psi
Gregory A. Burns.....Eta Psi
David A. McElroy.....Eta Psi
Dennis B. Cole.....Eta Psi
Robin L. Nichol.....Eta Psi
Bruce E. Gray.....Eta Psi
Stephen J. Burnham.....Eta Psi
Richard C. Bartel.....Eta Psi
John K. Guest, Jr.....Pi Rho
William M. Rue.....Pi Rho
Stanley V. Briggs.....Pi Rho
Robert A. Kawalek.....Pi Rho
Thomas R. Duck.....Pi Rho
Kenneth H. Kitts.....Pi Rho
Brian O. Earle.....Gamma
William F. Steigman, Jr.....Xi Tau
Richard C. Burts, Jr.....Nu Chi
Wilbur A. Gould.....Beta Psi
Adolphus L. Williams, Jr.....Sigma Mu
Thomas F. Fine.....Lambda Nu
Lee W. Hannahs.....Epsilon Lambda

E. Lincoln Thomson.....Delta Tau
Allyn S. Norton, Sr.....Rho
Varre L. Cummins.....Sigma Tau
James T. Stensvaag.....Iota Tau
William J. Brinkman.....Iota Tau
John Sherwood.....Alpha Pi
John F. Llewellyn.....Sigma Beta
J. D. Siegfried, Jr.....Alpha Gamma
Laurence A. Dunn.....Theta Epsilon
Lyndall L. Miller.....Mu Tau
Milton E. Smith.....Tau Epsilon
Glendon M. Bethard.....Tau Iota
Richard L. Gardner.....Beta Sigma
Howard A. Spielman.....Mu Lambda
James D. Durrett.....Epsilon Mu
David B. Humphrey.....Delta Gamma
James F. Tyrrell.....Pi Tau
Philip E. Petrsek.....Iota Beta
Ronald A. Melver.....Iota Beta
H. Sanford Gum, Jr.....Pi Sigma
Roger Hoppe.....Theta Tau
Eric W. Nelson.....Beta Rho
John A. Brewer, Jr.....Epsilon Alpha
Ramon S. Abarca.....Delta Chi
Sol H. Putzel, Jr.....Theta Mu
Richard M. Fitzpatrick.....Lambda Tau
Frank A. Baker.....Chi
Thomas A. Enger.....Alpha Chi
Thomas Washington.....Zeta Phi
Estone B. Mbajah.....Iota Beta
Ronald L. Chaves.....Xi Nu
Roy W. Thompson.....Sigma Gamma
Charles D. Mills, Jr.....Xi Tau
Michael H. Wayne.....Alpha Delta
Hugh S. McPherson.....Nu Kappa
Mark F. Reynolds II.....Sigma Omega
Harold F. Marks, Jr.....Beta
Donald L. Eastman.....Eta Omicron
Gregory C. Davis.....Pi Sigma
Sidney P. Smith.....Pi Sigma
Andrew H. Webb.....Alpha Delta
Joseph L. B. Forrester III.....Sigma Mu
Gerald E. Wyche.....Sigma Mu
Ted Karpf.....Xi Nu
Dale D. Ensor.....Mu Xi
Charles J. Keener.....Alpha Beta
David Larkin, Jr.....Omicron Theta
James R. Scales.....Kappa Theta
Alden P. Tuttle.....Kappa Omicron
Charles R. Dannison.....Gamma Phi
William C. Fink.....Gamma Pi
Harold Richardson.....Gamma Pi
Nathan J. Sambul.....Gamma Omicron
Edward E. Conwell.....Eta Omicron
Gary L. Sanford.....Eta Omicron
Samuel F. Sampson.....Kappa Delta
David L. Webb.....Epsilon Epsilon
Robert B. Haug.....Gamma Psi
Peter T. Van Aken.....Alpha Chi
Rees T. Evans.....Theta
James E. Sellman.....Theta
Duane E. Smith.....Rho Theta
Dewaine T. Norris.....Beta Zeta
John A. Cowan.....Beta Beta
Aaron Zuckerman.....Alpha Pi
William J. Seigler III.....Nu Chi
Thomas R. Gove.....Theta Sigma
R. L. Tombaugh.....Alpha Gamma
James G. Patterson, Jr.....Tau Epsilon
Loren K. Jensen.....Eta Kappa
Benjamin Banach.....Rho Mu
James B. Fleenor.....Lambda Alpha
Frederick M. Scalese, Jr.....Nu Alpha
J. Sidney Downey.....Mu Xi
David E. Benson.....Mu Xi
Daniel Petchers.....Gamma Beta
Stan G. Hixson.....Alpha Mu
Robert D. Peterson.....Theta Rho
Allen L. Frutig.....Delta Xi
Floyd A. Apill.....Beta Beta
James A. Meer.....Delta Rho
Richard E. Rea.....Theta Sigma

Michael S. Cohn.....Omicron Theta
Richard L. Ross.....Nu Kappa
Ross E. Brown.....Nu Kappa
Lyle T. Chandler, Jr.....Nu Kappa
Francis N. Suberati, Jr.....Nu Psi
J. J. Bragg.....Mu Tau
Robert A. Mayo.....Nu Alpha
Carley R. Thompson.....Delta
Gerald J. H. Bryan.....Mu Tau
John H. Wiseman.....Beta Psi
David H. Wehmeyer.....Beta Psi
Robert D. Seif.....Alpha Alpha
Guy A. Jones.....Omega
Nerius F. Jordon, Jr.....Lambda Nu
William I. Watson.....Xi Delta
John D. E. Carter.....Mu
Robert A. Dworkin.....Alpha Alpha
George W. D. Elder.....Gamma Theta
Steven J. Muzos.....Alpha Alpha
Alan S. Robertson.....Alpha Alpha
LeRoy C. Basha.....Alpha Alpha
John A. Rupich.....Mu Tau
Ronald F. Kocher.....Mu Rho
Glenford A. Newtown, Jr.....Beta Rho
Paul A. Wereszynski.....Eta Mu
James Bryant, Jr.....Sigma Pi
Richard B. Carithers.....Pi Xi
James E. Howey.....Tau Epsilon
O. Leon Crain.....Gamma Beta
Sherman R. Whiting.....Tau Iota
Michael E. Long.....Alpha Alpha
Malcom N. Dana.....Beta Theta
Ronnie L. Scott.....Beta Sigma
Martin D. Begleiter.....Mu Lambda
Frank J. Twist.....Beta Nu
Robert A. Weng.....Beta Psi
Michael R. Muzos.....Alpha Alpha
Jerry R. Robertson.....Xi Sigma
John A. Girard.....Beta Phi
Mark M. Levin.....Zeta Delta
James N. Lichtenegger.....Beta Psi
Forrest L. Jacobi.....Beta Rho
Gregory S. Delfino.....Sigma Chi
Stephen E. Lickey.....Zeta Beta
John D. Chailer, Jr.....Gamma Kappa
Michael L. Story.....Theta Tau
Ron C. Brooks.....Theta Tau
Dana L. Rittiman.....Theta Tau
Donald O. Park.....Theta Tau
Darrel A. Keck.....Mu Delta
Dean M. Randash.....Mu Delta
James H. Sadler.....Mu Delta
Michael D. Clasby.....Mu Delta
Michael E. Lebo.....Lambda Delta
L. Guilford Daugherty.....Nu Kappa
Robert M. Carlson.....Alpha Delta
Ronald W. Larison.....Epsilon Alpha
Frederick P. Sturgis.....Xi Phi
Robert G. Mehlhoff.....Mu Delta
Warren Holm.....Nu Epsilon
William L. Conley, Jr.....Theta Xi
David W. Carter.....Theta Xi
Jerome H. Wood, Jr.....Zeta Phi
E. Bartram Lippincott.....Pi Nu
Robert L. Vanderley.....Eta Psi
Phillip E. Pollet.....Pi Nu
Joseph Pate McGill.....Xi Psi
Larry M. Baker.....Theta Iota
Dr. J. F. Bergner, Jr.....Kappa Theta
Richard N. Fisher.....Kappa Theta
Rudolph G. Morris.....Theta Chi
Larry D. Edmondson.....Beta Rho
Norman D. Leifer.....Sigma Chi
Michael S. French.....Iota Chi
Michael W. Gaupin.....Delta Theta
Dennis P. Marrell.....Nu Tau
Gary S. Straus.....Kappa
Leonard I. Wanetik.....Kappa
Garry C. Clay.....Delta
Larry M. Burch.....Kappa Theta
George T. Evans.....Kappa Theta
James M. Caruthers.....Beta Pi
James H. Biddle.....Rho Theta
Larry G. Newhouse.....Alpha Iota

AN OPEN LETTER FROM THE PRESIDENT

Dear Alumni of Alpha Phi Omega:

Alpha Phi Omega is suffering from growing pains and needs your help and financial support.

Our undergraduate chapters want the services of a trained national staff. They want the most efficient possible office to help them meet their problems and supply that vital communication link, so essential for a national organization such as ours.

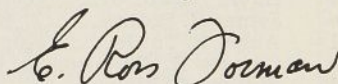
Frankly, the Fraternity cannot meet these demands without employing more staff and without increasing its office help as well.

Many Life Members have expressed an interest in a program for alumni and that, too, requires full-time staff people to keep it going.

Never in our history have so many campuses asked us to bring APO to them. We are a very large organization. We now have nearly a half thousand chapters and more than 107,000 members. We cannot expand our services without additional financial support.

The Fraternity's future depends on financial support. Your gift, whatever the amount may be, can help move us in the direction we must take.

Fraternally and sincerely,



E. Ross Forman
National President



<input type="checkbox"/> PARTICIPATING MEMBERSHIP	\$ 10.00 Annually
<input type="checkbox"/> CONTRIBUTING MEMBERSHIP	\$ 25.00 Annually
<input type="checkbox"/> SUPPORTING MEMBERSHIP	\$ 50.00 Annually
<input type="checkbox"/> SUSTAINING MEMBERSHIP	\$100.00 Annually
<input type="checkbox"/> GRADUATE MEMBERSHIP	\$ 5.00 Or More Annually

Alpha Phi Omega

NATIONAL SERVICE FRATERNITY

Please register my support in the forward program of Leadership, Friendship and Service through Alpha Phi Omega.

I submit my annual membership fee of \$ _____ herewith or, \$ _____ and the balance as follows: _____

Date: _____ Signed _____

Chapter _____ Address _____

Year _____

CASH RECEIPT

Received of _____ for _____

☐ Participating ☐ Supporting
☐ Contributing ☐ Sustaining
☐ Graduate

\$ _____ membership in Alpha Phi Omega in amount of _____

Date _____

Signature _____

ALPHA PHI OMEGA National Service Fraternity
1100 WALTOWER BLDG.
KANSAS CITY, MO. 64106