



Torch and Trefoil



Food for Needy Families

(Story on page two)

VOLUME 30, NUMBER 4, APRIL, 1955

TORCH and TREFOIL

April, 1955

Issued regularly eight times a year, monthly
October through May.

Subscription price \$1.00 a year

Entered as second class matter February 5,
1938, at the post office at Kansas City, Mo.,
under act of March 3, 1879. Office of publica-
tion, 419 Columbia Bank Bldg., Kansas City,
Missouri.

Printed by
Smith-Grievies Company, Printers & Lithographers
Kansas City, Missouri

**National Officers of
Alpha Phi Omega**

M. R. Disborough... Louisville, Kentucky
National President
George F. Cahill... Cincinnati, Ohio
National First Vice President
Irwin H. Gerst... Hawthorne, California
National Second Vice President
E. Ross Forman... Philadelphia, Pennsylvania
National Third Vice President
Joseph Scanlon... Yakima, Washington
National Treasurer
George H. Charno... Kansas City, Missouri
National Legal Counselor
A. G. Spizzirri... Kansas City, Missouri
National Editor
Sidney B. North... Kansas City, Missouri
National Secretary

Past National Presidents

Frank R. Horton... Bangor, Pennsylvania
Dr. H. Roe Bartle... Kansas City, Missouri
Dean Arno Nowotny... Austin, Texas
Prof. Daniel Den Uyl... West Lafayette, Ind.

National Executive Board

The Officers, Past National Presidents,
and

Manfred O. Aws... Minneapolis, Minn.
Prof. Harry C. Barnett... East Lansing, Mich.
Dr. Glenn R. Barr... Oxford, Ohio
Prof. R. J. Bradshaw, Jr... Chattanooga, Tenn.
Dr. R. H. Bolyard... Lafayette, Louisiana
Joseph A. Brunton, Jr... New Brunswick, N. J.
C. J. Carlson... Riverside, California
James G. Evans... Niceville, Florida
Benjamin F. Fay... Philadelphia, Pa.
Rev. J. J. Higgins, S.J... E. St. Louis, Ill.
Dr. Lawrence L. Hirsch... Chicago, Ill.
Stephen J. Horvath... DeKalb, Ill.
Stanley Levingston... Ruleville, Mississippi
Dr. Henry Miller... Huntington Station, N. Y.
Rev. Robert J. Payne... Cos Cob, Conn.
Harold F. Pote... New Brunswick, N. J.
William S. Roth... Raleigh, N. Carolina
Dr. Max A. Schneider... Buffalo, N. Y.
Prof. Kent D. Shaffer... Pittsburgh, Pa.
James W. Thomas... Arcadia, California
Joe Paul Tupin... Austin, Texas
Dr. Ray O. Wyland... Tujunga, California

"BOX SCORE"

Present number of chapters, in-
cluding petitions approved..... 276
Total number of members since
founding46,097
Number of copies of this issue....13,000

Of Thee I Sing - - -

Someone once said, "Teachers are not just people earning a living; they are architects of the future in the land of opportunity."

In the ranks of Alpha Phi Omega we have been blessed from our beginning by the influence of some of these architects. The men who have served you and me as Faculty Advisors so faithfully have indeed built well for the future.

These professors, learned men and devoted, have helped to shape the destiny of our great organization. Through their unselfish efforts (often at the end of a trying day), chapters have prospered. Through their vision, concepts of service and leadership have been enlarged. Through their influence, boys have become men and men have become great.

Not with ruler have they planned, but with spirit. Not with granite have they built, but with soul.

To you, the architects of the future, we, your brothers of Alpha Phi Omega, respectfully bow in recognition.



SAY,
DID YOU
KNOW?

—That Alpha Phi Omega enjoys the heartiest endorsement of the Boy Scouts of America.

—That our national organization operates on a \$45,000.00 budget for 1955.

—That our National Secretary has been on the job for twenty-two years. He started on January 28, 1933.

—That your news items are invited for use in future issues of TORCH AND TREFOIL.

—That there are about four hundred four-year colleges and universities which do not yet have chapters of Alpha Phi Omega. There is fine opportunity for your chapter to help organize a new one.

NEW LIFE MEMBERS

Five more brothers have subscribed for Life Membership since the previous list was published in our March issue. They are:

Earl M. Lowenstein, Alpha Pi Lawrence Harvey Multer, Gamma Iota
David George Walker, Epsilon Mu Rjurik Golubjatnikov, Eta Epsilon
Phillip Wayne Goertz, Theta Upsilon

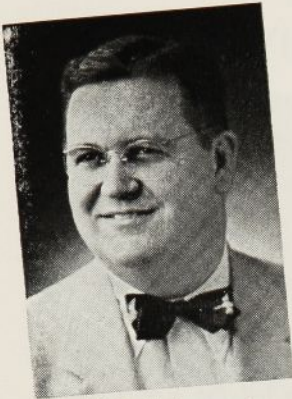
ON OUR COVER

The annual food drive for the needy, sponsored by Alpha Nu Chapter at St. Norbert College, was a great success under the chairmanship of George Gow and Dave Kuckuk. The drive was held the week before the 1954 Christmas vacation, with baskets being placed in Boyle Hall to receive contributions from students.

A total of twenty-six baskets of food, enough for eighty people or about twenty families, were collected in the week-long drive. The baskets were taken to the Green Bay Apostolate to be delivered to needy families in the area.

The opportunity to donate was open to all St. Norbert students and retail grocery stores. The stores were solicited by members of the chapter and co-operated generously. The college gave the use of a truck for making collections and delivering the baskets of food to the Apostolate.

In a letter to the chairmen of the drive, Father Spalding, Diocesan director, stated, "This program would have been completely impossible without your wonderful help and generous contributions. I want you to know that we appreciate your interest in the Apostolate that you have shown very well during the Christmas season."



M. R. Disborough
National President

THE NATIONAL PRESIDENT REPORTS . . .

1. We will make available soon a list of Presidential Representatives . . . men appointed throughout the nation to visit chapters and to assist you in every possible way.

2. Numerous preparatory groups are now functioning and several will soon be ready to submit petitions for charters. George F. Cahill, National Extension Chairman, and our entire National Executive Board hope that with your help these can soon be "brought into the fold."

3. I am asking the TORCH AND TREFOIL to publish, yet this Spring, the Sectional Conference areas and the board members assigned thereto . . . this so that plans can be made early for dynamic

Sectional Conferences next Fall.

4. The 1956 National Convention, to be held in Los Angeles, is already in process of being planned. A hearty salute to those who are working on it.

5. To facilitate National Office service to you, two new pieces of equipment have been purchased—a graphotype machine (for making addressograph plates) and a new electric mimeograph machine (to replace the hand-operated machine formerly used).

Camp Time

By David M. Dunbar

Assistant National Director of Camping, BSA

With the arrival of warmer weather afield there is a "Coming Out" activity through all of nature—the sleepy mother bear ventures forth with her nimble but hungry cubs. The ground hog has long since made his debut leading the parade. The raccoon is wide eyed and roving about. The opossum and ground squirrel join the march.

Countless numbers of insects are beginning to squirm, crawl, wiggle, twitch, climb and fly. The call of the sun brings on the great outdoor mobilization.

Those of the human kind who at Springtime enjoy the green tinted foliage, the brown earth, the azure sky, the blue water, the grey cliffs, the white water foam, the orange sunset, also begin to answer the call to the open trail.

So . . . across the meadows and down the trails, into the forests and up the ravines, through the wilderness, over the lakes, around the stream bend—out on the highways, they come, packs on backs, boots laced tight, Scouts and Explorers are on the march to camps. Camps all over America. Eight hundred and twenty camps. Nearly a half a million Long Term Campers were on the trail to camps in 1954. More will come in 1955.

The Boy Scouts of America salute Alpha Phi Omega for the splendid co-operation and leadership so many of its members give to Scout Camps each summer. Many Alpha Phi Omega members could no doubt get much more return for their time elsewhere in terms of dollars, but they choose camp life, the outdoor life, and the chance to serve America through service to boyhood. They purposely decide to "put something back," since they have all received so much from Scouting.

Again this year Alpha Phi Omega men will be welcomed into Scout camps as Directors, Assistant Directors, Program Directors, Aquatic Men and Counselors. The camp is the thing! A beneficial outdoor program is the purpose! The American boy is the target!

We urge Alpha Phi Omega members to contact their local Council office in quest of camp staff positions now, or write to Camping Service, Boy Scouts of America, National Council, New Brunswick, New Jersey.

It's a Good World!

News Editors always watching owl-ishly for some pixilated human to snap at a dog never tell us how many dogs spend their whole time not biting men. To surprise us once the following exclusive news is joyously presented:

Approximately thirty-five million couples will remain more or less happily married during the year and not get divorced, if the current trend in marriage and divorce rate continues. If the present auto accident rate holds through the year, about ninety million drivers and passengers will drive over three hundred and fifty billion miles without getting killed.

Probably twenty-three million boys and girls from seven to seventeen years old will not land in the juvenile court this year because of juvenile delinquency.

Nine hundred and ninety-four out of every thousand children will go through life without having a crippling case of infantile paralysis.

A train passenger has to travel a thousand million miles on the average before finally getting himself killed in a train wreck.

At press time (and this figure may change radically) there were approximately fifteen million organized workers not on strike.

The council of dental therapeutics assures us that probably the safest and cheapest mouthwash is plain water.

And, so your friends won't have to tell you, deodorant sales are up forty-two per cent over five years ago.

Heads up, men of APO, it is not such a tough world after all!

PLEDGE SONG

By Herb Effron
Gamma Beta Chapter

This was written while Herb was a pledge. It is to the tune of the Toast Song.

Here's to Alpha Phi Omega,
Pledges tho' we be,
To the chapters strong and sturdy,
We pledge loyalty.
Never loafing, never resting,
Working we will be;
Doing all to help the chapter,
Our fraternity.

A FEATURE PROJECT---

BRIGHT AND SHINING FACES

How Some Chapters Capture the Enthusiasm of Explorers, Bringing Them to See Their Campuses and to Learn About Alpha Phi Omega . . . a Real Project of Dignity, Worth and Everlasting Dividends.

Anyone who is cynical and skeptical should make it a point to take part in a project similar to the ones described in this article. Your faith in mankind will be restored, and if you are sufficiently philosophical, your outlook on the ideals of Alpha Phi Omega greatly strengthened.

And if you are in a mellow mood at the time you read this, settle back, take a satisfying pull on your favorite briar and look in retrospect to the days when you, too, were about to embark upon a college career.

Many chapters of Alpha Phi Omega across the country have been conducting what, for want of a better term, we shall classify as "Explorer Days." These vary in nature from one-day vocational exploration conferences to a three-day week-end complete with major athletics events, dances, swims, etc. We shall endeavor here to highlight a few of which we have learned, and in so doing we hope to encourage you and your chapter to undertake a similar project on your campus.

University of Georgia

This group of live wires in Beta Zeta Chapter staged a most successful project in its Explorer Education Conclave.

In close cooperation with campus officials and Scout council leaders this project lasted from Thursday evening through Saturday afternoon. It included such highlights as educational conferences in eighteen fields conducted by top men in those fields, baseball games, swimming meets, campus tours, and vocational testing.

They had an unusual gimmick in the project—it was a father-son affair. A new twist and one that should add much to the success.

University of Wisconsin

More than 300 Explorers and their advisors from over the state of Wisconsin attended a one-day Explorer career conference on the campus at

Madison. The purpose of the conference was to present the Explorers the facts of several potential careers so that he will be better able to choose wisely his life's work. Eleven different fields were covered, including the military, Scouting, and the usual in medicine, education, law, etc. It was highlighted by a banquet and ball for the Explorers in attendance. This was conducted by Beta Theta Chapter.

Yale University

Highlighted by an exhibition by diving ace Skip Browning, men of AΦΩ on the campus of old Eli conducted what was apparently a very successful swim meet for the Explorers of the New Haven area. The freshman swimming coach conducted the swim meet after which lunch was held in the freshman dining hall and the entire day concluded with movies in the Yale Library Auditorium. This is a fine project of Delta Nu Chapter.

Lehigh University

Explorer Visitation Day, for Explorers and their leaders, was attended by more than 1,200 potential college students. The program, star studded and fast moving, included campus tours, Lehigh-Rutgers football game, wrestling matches and lunch. The brothers of Alpha Psi Chapter really went all out and featured a Scout demonstration during half-time.

University of Miami

A group of about 100 Explorers were given a comprehensive tour of the University of Miami, Coral Gables, Florida, in a recent visitation sponsored by Alpha Pi Chapter. Talks were given by the deans of all the schools and the athletic coaches. A luncheon was held and movies were shown to the Explorers depicting various facets of university life. The Explorers were well pleased with this seminar and the chapter plans to make this an annual event.

Valparaiso University

Approximately 150 Explorers from ten cities attended the first Explorer Scout Visitation Day at Valparaiso University, sponsored by Zeta Gamma Chapter. A day-long program featured training lectures, a college baseball game, campus tour and banquet.

The main banquet speaker was Col. Frank L. Gray, Lake County Civil Defense Director. Dr. Marshall J. Jox, Dean of Men, extended greetings on behalf of the school. Training lectures were presented by Prof. Milferd Eggerding of the Department of Geography and Geology, who discussed maps and map reading; Valparaiso Fire Chief Wilbur Cowdrey, who explained various types of fire fighting equipment and techniques; and the head football coach, Emory Bauer, who spoke on excelling in sports.

Descriptive pamphlets concerning the curricula offered at Valparaiso and also Civil Defense material was distributed among the Explorers. It was a very successful day's program.

University of Kansas

At the annual Kansas Relays, Lambda Chapter conducts an Explorer Visitation, which is attended by boys from four councils. The program includes tours of the campus with special demonstrations and lectures in several departments, lunch in the Student Union, and attendance at the finals of the Relays in the afternoon.

This event has been a major project of Lambda Chapter for several years and it is very popular among Explorers and leaders over a wide area. The Extension Division of the University of Kansas cooperates thoroughly in the publicity and arrangements for this visitation day.

University of North Carolina

Rho Chapter annually sponsors an Explorer Vocational Conference on

(Continued on page nine)

VIEWS FROM EXPLORER VISITATION DAYS



Members of Rho Chapter are shown preparing for the Fourth Annual Explorer Vocational Conference held at the University of North Carolina.



Here is a view of a dance given for Explorers at the 1954 Careers Conference sponsored by Beta Theta Chapter at the University of Wisconsin.



In Gamma Gamma Chapter's Explorer visitation day at the University of California, this picture shows a group at the campus cafeteria awaiting the chow call.



Explorers are shown here gathered before a film showing at the visitation conducted by Delta Nu Chapter at Yale University. The event was a fine success.



At University of Miami, Coral Gables, Florida, Explorers are shown here on a tour of the campus. Members of Alpha Pi Chapters are the guides.



Shown on top of the world-famous Campanile at the University of California are Don Van Druten of Gamma Gamma Chapter and several of the Explorers.



Campus Aid Drive at V. P. I.

ZETA BETA CHAPTER recently completed its annual campus aid drive for all worthy agencies, and brought in about \$2,400 in the Ugly Man contest, solicitation and charity dance at *Virginia Polytechnic Institute*. Other activities coming up in the immediate future, as reported by Professor M. Buford Blair, Chairman of the Advisory Committee, are the three-day Red Cross Blood Bank drive and conducting the annual Scout Camporee.

Sales to Improve Campus

ETA IOTA CHAPTER's sales of greeting cards and subscriptions to magazines this past Christmas time was a great success and has put the group in position to afford some campus improvements at *Millersville STC*, reports Robert D. Jacoby, Corresponding Secretary.

New Earnings at San Jose

GAMMA BETA CHAPTER at *San Jose State College* has recently completed a money-making project which brought in about \$150.00. It was a drive to collect wire coat hangers which were then sold to dry cleaning establishments. Herb Hylbert, Corresponding Secretary, in reporting this has recommended this idea for the use of all chapters.

Busy at Texas A & I

March is a busy month in DELTA CHI CHAPTER at *Texas A & I College*. The Ugly Man Contest and the annual Kite Derby for Cub Scouts are both being conducted, and at the same time construction of floats has started for the annual Lantana Coronation Parade. This is reported by Dean J. E. Turner, Chairman of the Advisory Committee.

Collect Food at Union College

ETA GAMMA CHAPTER at *Union College* conducted a food drive at Christmas time in cooperation with the local Welfare Association. This is reported by Kenneth B. Haefner, President.

Registration Aid at Northern Illinois

At the opening of the Spring semester ETA CHAPTER assisted with registration of students at *Northern Illinois State Teachers College*. This is a regular service rendered each term, reports by Carl Nemecek, Recording Secretary.

Annual Swim Meet at Lafayette

ALPHA CHAPTER recently conducted its annual swimming meet for Scouts in the *Lafayette College* pool. Troops of Easton, Pennsylvania, and vicinity participated. The meet was won by Troop 3 of College Hill, this being their third straight win entitling them to permanently keep the AΦΩ Swim Meet Plaque. This event consisted of various relays and contests. It was very successful, with sixteen Scout units taking part, reports Martin Cohen, Corresponding Secretary. The award was presented to the winning troop by Mark Weisburger, President.

SERVICE TO YEARBOOK STAFF



Delta Mu Chapter at *Kansas State Teachers College, Pittsburg*, earned a free page in the college yearbook by helping the Kanza staff. The chapter sold tickets for the Kanza Ball, starting two weeks before the event. Shown at the table handing tickets to a customer is Arnold Clum, Past Vice President, and working with him is Carol McNickle, Past President. The picture is by courtesy of William D. Sutterfield.

New Book Exchange at New Mexico A & M

Students of *New Mexico A & M College* welcomed the latest service project of LAMBDA IOTA CHAPTER, this being the book exchange which was conducted at the opening of this term. About \$450.00 worth of books were handled, resulting in considerable saving to the students. The chapter plans to expand this project in coming semesters, under the name of "The Book Mart." Many of the faculty helped by announcing to their classes that books for their courses were available at the exchange. This is reported by Homer Heinzman.

Collect at Kent State

EPSILON PSI CHAPTER at *Kent State University* handled collection for the Community Chest drive on the campus this past Fall. Another recent project has been the selling of refreshments at the University Theater productions. Numerous other services are handled by the chapter, reports Carl B. Toot, President.

APO Chapel Program at Florida A & M

KAPPA DELTA CHAPTER at *Florida A & M College* has arranged for the date of May 11, 1955, to present a chapel program under AΦΩ sponsorship. A speaker affiliated with our fraternity will be chosen. This is reported by Johnny K. Bryant, President.

Big Christmas Seal Sales at Johns Hopkins

Just before the past holidays, KAPPA MU CHAPTER sold more than \$350.00 worth of Christmas Seals for the tuberculosis society. This very worthy service is reported by Leslie Bard, President.

New Chapter Room at Gamma Zeta

GAMMA ZETA CHAPTER at *Georgia Tech* is now securing a room for meetings and book exchange operation. This room will enable the group to keep permanent records of all activities and will be a great asset. The outlook is very good, reports Leon Sherman, President.

HOST TO ORDER OF THE ARROW CONCLAVE



Gamma Theta Chapter recently served as host to the Region 8E Order of the Arrow Conclave held on the campus of the University of Colorado. The picture shows the head table at the banquet served in the Memorial Student Union Building. In the back row, third from left, is Miles Reynolds who was then chapter president. Fourth from left is Fred Chambers, Faculty Advisor, and next to him is Wes H. Klusmann, National Director of Outdoor Activities, BSA.

Blood Drive at Shurtleff

The annual blood drive of *Shurtleff College* has been sponsored as usual by EPSILON PI CHAPTER. The chapter is fostering stronger campus spirit. Pledges last Fall did the work of removing overgrown grass on the college walks and built a float for the Homecoming parade. This is reported by Niles E. Pinney, President.

New Film for Bridgeport

THETA PSI CHAPTER has produced a 16mm sound film about the *University of Bridgeport* and is donating it to the Public Relations Department of the University. The film will be shown to prospective students, freshmen and others to give them information about the university. This excellent project is reported by Saul Goldwasser, Vice-President.

Newsletter Clips

ZETA DELTA CHAPTER, *Miami University*: The chapter's biggest project of the year was the building of the Adirondak shelter at Camp Myron Kahn. One shelter was finished last Spring and used in the camping season and construction has been started on a second one. The Ugly Man contest brought in \$325.00 which was donated to a scholarship fund. Hospital service is continuous. Members of the hospital committee go over every day to find out if any of the patients have any messages they want delivered on campus. In Scout Week, we sponsored our Third Annual Ex-



plorer Dance, held in the Hamilton Hall recreation room.

ALPHA ALPHA CHAPTER, *University of Illinois*: "The chapter contacts many of its new prospective members at the Student Activity Night held each Fall. Pictures and the scrapbook tell the story of the chapter. Many fellows stopped at our booth which was manned for two hours by active members."

OMAHA AREA ALUMNI CHAPTER: "We celebrated Founders' Day with a banquet December 16, 1954. The principal speaker was W. Otto Swanson, a life member of AΦΩ and prominent clothing merchant of Omaha."

LEADERSHIP FEATURE - - -

RUSH! RUSH! RUSH!

Though Not in Competition With Other Organizations, Alpha Phi Omega Must Conduct Organized Rushing in Order to Grow and Increase Our Program. Ideas Herein May Help—

Don't walk. Rush! One of the most important things that your chapter does in its year-round program is the activity of rushing.

It is only through the introduction of new members that Alpha Phi Omega can prosper and grow on any campus. And it is only through proper rushing techniques that those new men can be attracted to the chapters of Alpha Phi Omega.

Experience has proved that rushing cannot be an offhand proposition. It must be well planned to be executed in a systematic and dignified manner and to be truly successful.

It isn't too early to start planning this Spring for your Summer and Fall rushing activities.

SUMMER

As the chapter members scatter to the four winds for Summer vacations, each member should be provided with Alpha Phi Omega information both national and local in nature. In addition, some sort of sign-up card should be provided so that as the members of the chapter converge upon their home towns, high school seniors who will be attending your Alma Mater may be properly contacted and informed as to their future opportunities in APO.

A splendid source of future APO material is through the Scout Councils that serve the areas from which your college or university draws its students. Most Scout Executives will be happy to cooperate in such a venture for they know the top boys of their councils who will be entering college in the Fall, and are anxious to see them tied into a continuance of the ideals of the Scouting program. In view of the new college reserve program in the Boy Scouts of America, this is doubly attractive to the executive.

FALL

The real emphasis of the rushing

program should be placed upon the Fall semester. There are several factors to be considered and we submit them herewith for you to consider.

1. Who? Any young man regularly enrolled in your college or university who is or has been active in the Boy Scouts of America is eligible for membership.

2. In cooperation with the registration, a census should be taken at the time of enrollment in order to ascertain who are the men of the student body who qualify. This can be done either as an incorporated part of the matriculation form or by the use of the census cards as provided by the National Fraternity, or by any other means which you find effective. It is important, however, that you work from a list of names and not issue broadcast invitations. After all, it is an organization of prestige for which you are issuing invitations and there is not much prestige attached to the broadcast type of promotion.

3. Once the names of eligible men students have been compiled, an introductory letter or card and announcement concerning your rush smoker or meeting should be mailed or distributed to the residences of each of the men whom you wish to invite.

4. Following this the list should be divided into groups so that under the

direction of your rush chairman, teams can individually contact each prospect and answer first-hand any questions that he might have and issue a personal invitation for his attendance at the time of your rush meeting.

THE RUSH MEETING ITSELF

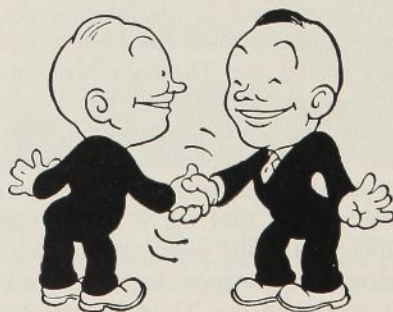
1. It must be planned in advance.
2. It must have enthusiasm.
3. There should be official recognition at this time from the administration, the president or the dean of the college.
4. By all means, do not overlook the possibility of refreshments.
5. Entertainment.
6. The story of Alpha Phi Omega.

Those are a few of the items which would of necessity, as we see it, constitute a good rush meeting. There are others which you can add; however, we urge that you not eliminate any of these basic ingredients. Remember to keep the meeting within time limits and to make sure that it is planned in advance. This will be the first view that many of your rushees will have of Alpha Phi Omega, and the first impression is often the last. Make it a good impression.

TIMING

If your chapter has difficulty in finding a time on the dean's calendar when such a rush program can be conducted, it is therefore prudent to suggest that such a date be set this Spring in the dean's office so that there can be no major conflict on the night next Fall when you intend to invite your potential pledges.

Also, remember in planning that most of the organizations on the campus make a big push for new members the first few weeks of the term. Consequently, the new man in college, straight from the concrete canyons of the city or the far-flung fields of the country, is confused and bewildered



by all that goes on. Many chapters have found it wise to withhold their rushing invitations until the third or fourth week of school. By that time the student has had a chance to develop a routine in his new life and it is not quite so harried by all of the confusion about him and the prospective member has had an opportunity to view the organization in action.

YOUR BUILD-UP

Being on the job the minute the student hits the campus is one of the finest public relations gestures and one of the finest rushing techniques that can be found. In the case of a large campus, information booths spaced about the campus are helpful. Information booths at train, bus and plane depots are helpful. Assistance at the time of registration is appreciated by those students and faculty. Welcome signs at strategic points on the campus are helpful.

To sum it all up there are perhaps three things that should be fundamental in the thinking of your rush chairman.

1. The first is basic in rushing for any organization—Sell the prospective member on the privilege that is his in attending your Alma Mater, what a great school it is and what a thrill he has in store for him as a member of the student body of your particular college or university.
2. It would then follow that the next logical step is to sell him on Alpha Phi Omega. However, this should be done on a dignified basis, indicating to the new student that here is a live-wire organization with certain membership qualifications, which knows no barriers in creed, color or economic background.
3. And, of course, the third step with which we shall deal in a later issue of *TORCH AND TREFOIL* is what to do with the rushee after he has pledged. Remember, pledge training is an important function in your chapter.

**SEE YOU
IN LOS ANGELES
AT
1956 NATIONAL
CONVENTION**

ZETA ALPHA CHAPTER ENJOYS GOOD PRESS

The following article—a fine tribute to the work of Alpha Phi Omega—appeared recently in the Bradley University newspaper. It was furnished to us by Donald L. Lewis, Historian.

They Measure Success by Service

In international code the letters SOS are a call for help; in over 250 schools throughout the United States and the Philippines, the letters APO are often an answer to that call.

Alpha Phi Omega, national service fraternity composed of former Boy Scouts, measures its success by the amount of service rendered to campus, community and nation. Most Bradley students will readily recognize the name, for on this campus the fraternity is an active one.

Since its founding on May 16, 1948, Bradley's Zeta Alpha chapter of Alpha Phi Omega has carried on a definite program of service. Their activities include assisting the school at registration, helping conduct safe driving campaigns by constructing and maintaining a series of billboards in Peoria, ushering at chapels, conducting campus tours, helping at debates, constructing the queen's float for the Home-

coming parade and sponsoring an annual Easter egg hunt at the Knoxville Avenue Children's home.

One of its most ambitious undertakings of the year is the canned food drive for Christmas baskets. Around the first of December, members place baskets at various stations in the Peoria area for the purpose of collecting food to make Christmas a little happier for some unfortunate families.

The fraternity reports their last drive was very successful. Tepee and Wigwam employees alone donated 140 cans. In Chillicothe, Ill., there was so much response that a partial house to house pickup had to be made. Altogether, 858 cans were collected throughout the Peoria area.

Besides these activities, there are many smaller ones which the fraternity conducts. Although members receive no pay for their work, they can feel a satisfaction that money never brings—that of helping others.

BRIGHT AND SHINING FACES

(Continued from page four)

the campus of the University of North Carolina. One of the members serves as conference chairman and other members work tirelessly in arranging the program, guiding the Explorers, administering the occasion and serving as hosts at the ball.

In close cooperation with campus officials and Scout council leaders this project offers a range of influences that is manifold.

1. An interesting activity for Explorers of a local council and your entire area.
2. A real opportunity for vocational exploration.
3. A splendid introduction to college life.
4. A wonderful chance to sell your Alma Mater.
5. A gratifying experience for men of Alpha Phi Omega.

Many chapters have conducted similar events, but with the above brief sketches as to what has actually happened, let's take a look at a typical program. We set this program forth

as a skeleton and into it you can weave the personality of your own campus and convenience of your own schedule.

1. Registrations, quarters assignments, campus tours.
2. Kick-off.
3. Get acquainted session.
4. Vocational testing, athletic pictures, military pictures, etc.
5. Conferences pertaining to vocation and fields of education.
6. Free time.
7. Banquet, dance, etc.

Now, of course, into this schedule must be fitted meals and any other features you desire.

Let's take a look at the committees needed for such an activity and what they do.

1. Promotion. Cooperation with the Scout Council to see that all Explorers are given invitations to attend. Many different devices can be used and you are certain of a warm reception from the Council leaders.
2. Registration. Systematic and efficient registration plan necessary, with pre-registration a must.

(Continued on page eleven)

FROM AFAR - - -

This concludes the interesting Christmas letter from Otto J. M. Smith, former Faculty Advisor, Gamma Gamma Chapter, University of California, who is now in Brazil.

Our port of debarkation was Santos, with the picturesque winding channels of its harbor bound on one side by modern city, on the other side by jungle green with occasional small primitive huts and dugout boats. Out of Santos, through banana plantations, up the beautifully-engineered Sao Paulo highway that climbs straight up the coastal escarpment by a spectacular series of switchbacks, through Sao Paulo, and "home" to CTA.

Our house here at CTA is definitely part of the Brasil of tomorrow and more like a movie set than the houses in which we are accustomed to living. Both living room and dining ell are tremendous, and each has an eight by twenty-foot window wall. The main area ceiling slopes up from about twelve feet at the lowest side to two stories at the other side, where a balcony leads to the bedrooms. The stairway is of "floating" stairs, emerging from the wall without visible support, and protected by only a single handrail. We have made it safer for the children by a complicated lacing of rope. The kitchen has steel cabinets, electric range and refrigerator, and we have one tremendous bedroom and two smaller ones upstairs, and a large bath up and downstairs, also a maid's room and bath, and a powder room. The bedrooms overhang a large concrete terrace in front, which, together with the carport, provides about 45 by 20 feet of rain-protected lounging or play space. The dining room windows open on a walled side garden in which an incongruous assortment of flowers is growing—tropical elephant ears and orchids, poinsettias, begonias both fancy-leaved and fancy-flowered, along with violets that now are in full spring bloom, and the usual annuals like zennias, gladioli, etc. We also have two blooming trees, one yellow, one purple. Back of our house is cleared area with matto beyond. In front is a landscaped court between our row and the next row of houses, about 150 feet by 800 feet of lawns, sanded paths, little new trees and flower beds. Beyond the other row of houses towers an eucalyptus grove, reminiscent of California. The tradespeople who come to the back door, however (and clap three times to get our attention) come in horse-drawn carts. The dry-cleaning man comes by bicycle and has a yoke on his back on which he carries the newly-cleaned clothes.

The housing varies even more than the transportation. On the road into Sao Jose, which winds along a small valley with mountains in the distance, one sees some huts of bamboo plastered with mud, and rows of closely packed mud houses of one door and window each, where bare-bottomed babies play in a most sociable way with dogs and pigs. There are modernistic bungalows (I use the term advisedly) and handsome villas with painted tile doorways and walled gardens. Overlooking the Vale do Paraiba, set on a high cliff, is a row of California-type bungalows. All in all, the mud huts predominate, and some of them are very picturesque, especially on the steep slopes where stairs replace streets, and they are surrounded by luxuriant

wild foliage. From them emerge, every afternoon at about four o'clock, women and children in cleanly washed, starched and ironed cotton dresses, even though they may be barefoot. The teen-aged girls tend to be beautiful, from whatever economic class. In fact, Brazilians as a whole tend to be photogenic. They also are warm-hearted, friendly and love children. Brazilian children, even more than Americans, tend to be noisy, happy and undisciplined.

Here at CTA we have a great number of nationalities represented, 23 language groups in all. The dominant three, however, are Brazilian, American and German. CTA is a very closely integrated social group and has all the advantages (and disadvantages) of a very small town.

We have taken several trips to nearby points since Otto, by a noble application of American persistence, drive and ingenuity, finally managed to get our automobile out of the Alfandega after only two months—a record here at CTA where some people have waited for years. One memorable trip was to Caraguatatuba on the coast, a small seaside town located at the base of the coastal escarpment like a miniature Rio, with a spectacular and unpopulated beach protected by the great bulk of Ilha de Sao Sebastiao and surrounded by tropical rain forest on the steep slopes of the soaring mountains around it. The rain forest is full of gigantic trees, twisty vines, leaping waterfalls, tree-ferns and orchids.

We have also driven to Campos do Jordao, a mountain resort which is like a combination of a Swiss landscape with a Japanese print. The mountainous terrain has forests of Parana pine—an umbrella-shaped tree with bare lower trunk and spreading upper branches. Near here we dug for our garden begonias and fuchsias and gathered orchids and other air plants from the trees. Some of the orchids are blooming right now in our front window.

Otto is as busy as ever. He finds the students here a challenge and now gives lectures in about 80 per cent Portuguese. The students are superior to Americans in their mathematical background, inferior in laboratory technique or anything requiring initiative.

Little Otto and Sterling go to the American school here and are as happy as they have ever been, since each has a bosom pal his own age, and they all have CTA's 4000 acres where they can roam safely without supervision, including the free bus that they can board if their legs get tired. Stanny at 4½ is learning more Portuguese than the others through playing with Roo Symonds, a small American who speaks only Portuguese because he was raised by a Baba. Candy is going to the Escolinha, the Brazilian public school here at CTA, and is being tutored in Portuguese with the eventual intention of going to school in town.

Phyllis has a big tri-lingual Girl Scout troop which is flourishing, but operates under difficulties since she has to give directions in both Portuguese and English, and then every word she says has to be translated into German, somewhat like a United Nations meeting. Sigrid Focke and Aili da Rosa have been invaluable assistants. In October they had uma grande festa Americana—a Halloween party for the Scouts and their families. It was a warm night with fireflies—no "frost on the pumpkin."

Sao Paulo is our shopping city, a big pushy modern city, complete with smog. It is built on rugged terrain and laced together with tunnels and viaducts. The fourth cen-

ennial exposition is one attraction that we have enjoyed, a real world's fair layout, with permanent buildings complete with escalators, the first in Sao Paulo. The grounds are not yet completed, but, as the fair is expected to run for several years, *nao faz mal*—there's still plenty of time. The exhibits are attractive and well done.

Little Otto has plenty of opportunity to indulge his hobbies of bug and butterfly collecting. This is *definitely* the land of insects. The "bichu of the week" is a big horned beetle that has appeared to replace the June bugs of last week that caromed dizzily around the rooms, banging themselves on walls and fluorescent light fixtures. The moths are big and beautiful here. We took photographs of one large one as its wings unfolded right after it emerged from its chrysalis.

Sterling, who says with genuine passion, "I just love motors," has opportunities to enjoy his hobbies, too. Many of the boys have super-sized model planes which they fly in the cleared place back of our houses.

Phyllis has more time for outside activities since we have a full-time maid. The maid doesn't do all the work, but she definitely relieves the strain of caring for a household of six persons.

Big Otto has been fiddling in a string quartet for recreation, tearing himself away from his work one night a week to participate. We are also thankful for the phonograph and collection of records that we brought, and only wish we had brought the piano, too. They are exorbitantly expensive here.

We also enjoy the music native to Brasil, generally played on guitars, with a melody like the obligato to an American cowboy song, but with more complexity of rhythm.

We hope the Christmas season finds you as happy as we are. If this letter tends to superlatives it is because much that we have seen requires superlatives. This is a tremendously exciting and rewarding experience for all of us. We hope that you will receive this by Christmas time—a "Feliz Natal" from all the Smiths.

BRIGHT AND SHINING FACES

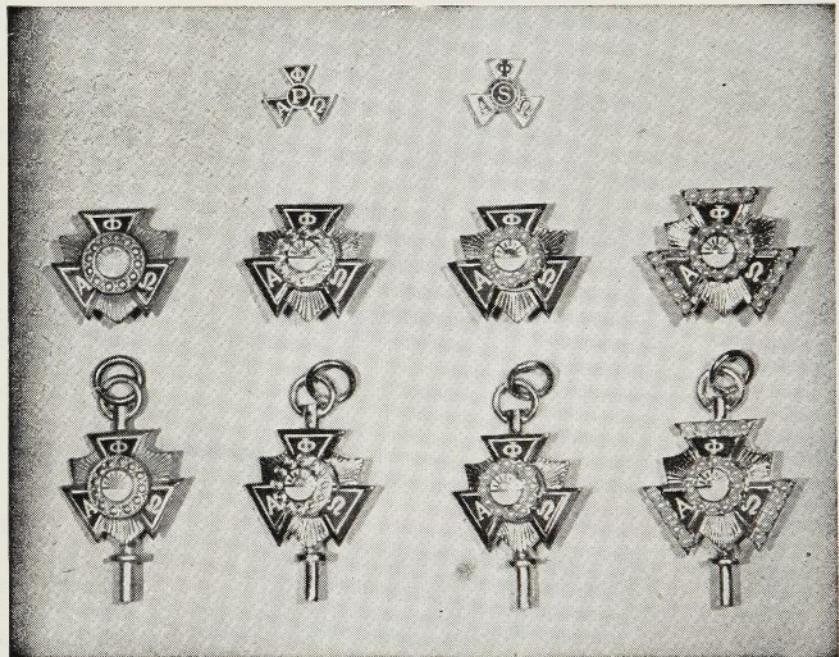
(Continued from page nine)

Particularly is pre-registration necessary when you are planning career conferences or anything of that nature.

3. Quarters. If camping is done, as at the University of Georgia, make certain that proper facilities are arranged. If not camping, previous arrangements for housing are necessary and adequate quarters must be provided.
4. Arrangements. Meals, assemblies, conferences, swims, games, dances, etc., must be properly arranged and coordinated with the campus officials.
5. Program. Conference speakers, opening and closing, special features, etc., are all included in the realm of this committee. Can probably be subdivided into many different committees such as one for the swim meet, one for the baseball game, one for the vocational discussions, one for the special features.

A lot of work? Sure! Worth it? Of course! From all reports, chapters that have undertaken such a project have received the blessings of the campus administration and have greatly enjoyed the association with these future $\Lambda\Phi\Omega$ members. The procedure as outlined is basic for almost any project. With the intelligence of your group you can make this into one whale of a service project. It has real possibilities!

INSIGNIA OF ALPHA PHI OMEGA



Pledge button (shown above at top left).....	.35
Service button (top right).....	.35
Standard badge, gold plated (extreme left, middle row).....	2.50
Standard badge, 10K (second from left, middle row).....	6.50
Standard badge, crown set pearl plain arms (third from left, middle row).....	13.25
Standard badge, crown set pearl center and arms (extreme right, middle row).....	24.25
Standard key, gold plated (extreme left, bottom row).....	3.25
Standard key, 10K (second from left, bottom row).....	8.50
Standard key, crown set pearl center plain arms (third from left, bottom row).....	15.00
Standard key, crown set pearl center and arms (extreme right, bottom row).....	26.00

(To all prices add 10 per cent federal tax, and any state or city tax which applies in your locality)

Official order blanks are available from your Chapter Treasurer or from the National Office.

Official Jeweler

L. G. BALFOUR COMPANY
Attleboro, Massachusetts

BULLETIN BOARD

ELECTIONS

April is election month in Alpha Phi Omega in accordance with the semiannual schedule set forth in the National Constitution. Officers may be re-elected once if chapter desires.

Election in April will give your new officers full opportunity to become acquainted with their jobs before the close of the Spring term.

Study carefully the qualifications of each candidate in an effort to select the most capable man for each job. Then after the election it is recommended that a joint meeting be held of old and new officers to discuss their responsibilities.

PLEDGE REGISTRATIONS

Applications for new pledges should be sent to the National Office promptly after each pledging ceremony. The delegates at our recent National Convention specified that pledge applications should be mailed within three days after the ceremony is held. Under this plan it is necessary that each pledge have his application filled out and his pledge fee paid before being permitted to pass through the pledging ceremony. It is important that every chapter register its pledges promptly. A letter of recognition is sent to each pledge when his application arrives in the office.

INTERNAL REVENUE REPORT

Each Alpha Phi Omega Chapter is required by law to file an income tax return annually with its local Director of Internal Revenue. Form 990A is used for this purpose.

It is not necessary for each chapter to apply for exemption. The letter of exemption received by the National Office covers all chapters. Your chapter does not need to pay any tax, but the filing of the return as a non-profit organization is required.

It is important that your chapter keep accurate financial records so you can fill out the return at the end of your fiscal year.

MAILING LIST

Do you know of anyone in your chapter who does not receive the Torch and Trefoil? If so, we urge you to notify our National Office.

We are endeavoring to deliver the magazine correctly, and are trying to keep all addresses up to date. Sometimes a member may move to a different residence without sending notice to the office. This causes his next copy to be returned and he is removed from the mailing list until we receive a corrected address. Also, sometimes an error on an addressograph plate causes loss of a copy. Your help will be appreciated.