



Torch and Trefoil

Officials of the Fourteenth National Convention



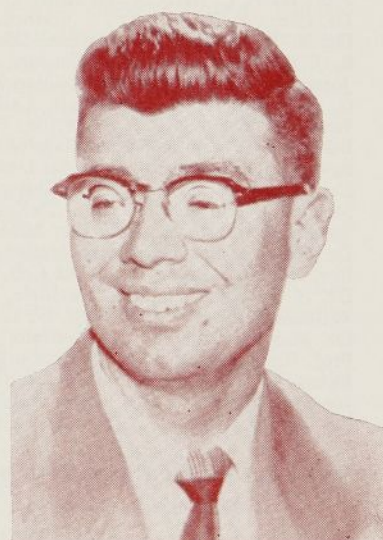
M. R. Disborough
Presiding Officer



Irwin H. Gerst
Arrangements Chairman



A. G. Spizzirri
Program Chairman



Rev. Robert J. Payne
Convention Secretary

APRIL, 1956

TORCH and TREFOIL

Volume 31, Number 4

April, 1956

Issued regularly eight times a year, monthly
October through May.
Subscription price \$1.00 a year

Entered as second class matter February 5,
1938, at the post office at Kansas City, Mo.,
under act of March 3, 1879. Office of publica-
tion, 419 Columbia Bank Bldg., Kansas City,
Missouri.

Printed by
Smith-Grievens Company, Printers & Lithographers
Kansas City, Missouri

National Officers of
Alpha Phi Omega

M. R. Disborough... Louisville, Kentucky
National President
George F. Cahill... Cincinnati, Ohio
National First Vice President
Irwin H. Gerst... Hawthorne, California
National Second Vice President
E. Ross Forman... Philadelphia, Pennsylvania
National Third Vice President
Joseph Scanlon... Yakima, Washington
National Treasurer
George H. Charno... Kansas City, Missouri
National Legal Counselor
A. G. Spizzirri... Kansas City, Missouri
National Editor
Sidney B. North... Kansas City, Missouri
National Secretary

Past National Presidents

Frank R. Horton... Bangor, Pennsylvania
Dr. H. Roe Bartle... Kansas City, Missouri
Dean Arno Nowotny... Austin, Texas
Prof. Daniel Den Uyl... West Lafayette, Ind.

National Executive Board

The Officers, Past National Presidents,
and

Manfred O. Aws... Minneapolis, Minn.
Prof. Harry C. Barnett... East Lansing, Mich.
Dr. Glenn R. Barr... Oxford, Ohio
Dr. R. H. Bolyard... Lafayette, Louisiana
R. J. Bradshaw, Jr... Chattanooga, Tenn.
Joseph A. Brunton, Jr... New Brunswick, N. J.
C. J. Carlson... Riverside, California
James G. Evans... Niceville, Florida
Benjamin F. Fay... Philadelphia, Pa.
Rev. J. J. Higgins, S.J... E. St. Louis, Ill.
Dr. Lawrence L. Hirsch... Chicago, Ill.
Stephen J. Horvath... DeKalb, Ill.
Stanley Livingston... Ruleville, Mississippi
Dr. Henry Miller... Huntington Station, N. Y.
Rev. Robert J. Payne... Cos Cob, Conn.
Dr. H. F. Pote... Scarsdale, N. Y.
William S. Roth... Raleigh, N. Carolina
Dr. Max A. Schneider... Buffalo, N. Y.
Prof. Kent D. Shaffer... Pittsburgh, Pa.
James W. Thomas... Arcadia, California
Joe Paul Tupin... LaMarque, Texas
Dr. Ray O. Wyland... Tujunga, California

National Publications Committee

A. G. Spizzirri, *Chairman*
Rev. Robert J. Payne Manfred O. Aws
Stephen J. Horvath Joe Paul Tupin
Dr. Max A. Schneider Frank R. Horton
Robert R. Weber

Of Thee I Sing

Reports received bring the good news that four members of Alpha Phi Omega have been honored by their regions by presentation of the Silver Antelope Award for distinguished service. In Region VII of the Boy Scouts of America, awards have been presented to *Professor Daniel Den Uyl*, Past National President of Alpha Phi Omega and Faculty Advisor of Alpha Gamma Chapter at Purdue University; *Dr. Russell J. Humbert*, President of DePauw University and Honorary Member of Alpha Upsilon Chapter; and *Reverend C. Oscar Leonardson*, Lutheran leader and Scouting Advisor of Lambda Rho Chapter at Augustana College.

In Region VIII, *Robert K. Goodwin*, industrialist and Honorary Member of Omega Chapter at Drake University, received the Silver Antelope Award.

Richard Schmidt, former active member of Gamma Xi Chapter at Rockhurst College, now in the Army, is serving as Assistant Scoutmaster in Heidelberg, Germany.

NEW LIFE MEMBERS

Six more brothers have subscribed for Life Membership in Alpha Phi Omega since the previous list was published. We welcome:

Glen Lee Corrigan, *Gamma Tau*; Doyle Grundy, *Beta Sigma*; James B. Rives, Jr., *Alpha Rho*; Donald Charles Nelson, *Delta Beta*; Stephen Uriah Flax, *Lambda Eta*; Daniel John Gorham, *Iota Rho*.

ON OUR COVER

Presented on our cover are the four top leaders for our Fourteenth National Convention of Alpha Phi Omega, to be held at Long Beach, California, August 28 to 30, 1956. The Presiding Officer is Brother M. R. Disborough, National President, who was founder and first president of Alpha Tau Chapter at Butler University.

The Arrangements Chairman is Brother Irwin H. Gerst, a charter member and past president of Epsilon Chi Chapter at Los Angeles City College.

The Program Chairman is Brother A. G. Spizzirri, a past president of Alpha Mu Chapter at William Jewell College.

Serving for the sixth time as Convention Secretary will be Reverend Robert J. Payne, a past officer of Omicron Chapter at the University of Iowa. Since attending his first convention in 1946, Bob has served ably in this capacity at each national convention.

IN MEMORIAM

Dean L. E. Darlington

Faculty Advisor, Delta Eta Chapter
Oregon State College

He was a Scouter for many years and was active in fraternal and service organizations. He was held in high esteem by those who were associated with him, and Alpha Phi Omega mourns the loss of this wonderful advisor and friend.

C. LeRoy Kinports

Honorary Member, Alpha Pi Chapter
University of Miami

He gave fine service in the chapter for many years and had much to do with its success in the early years of APO on the Miami campus. We deeply regret the passing of this fine leader and brother.

WHY A CHAPTER CALENDAR?

Now is the time to prepare a tentative "Calendar of Activities" for your chapter for the Fall semester or quarter. Why do it now? The reason is to give the members opportunity to plan ahead to participate in your early Fall activities.

What should be included in the calendar? Here are a few suggestions: Include plans for contacting former Scouts and Scouters and for pledging and pledge training; plans for your early Fall service projects—assistance with registration and orientation; book exchange, and others; and plans for fellowship.

Developing a calendar is a responsibility of your Executive Committee. We hope you will put your advance plans on paper before this Spring term ends, and then, of course, other items can be inserted later.

Campus Editorial

T O D A Y

By Frank Garosi

During the last three weeks the campus has been subjected to a great deal of high-pressure advertising and high-voltage "donation" pitches—all for a good cause, the Campus Chest, of course. Two of the most successful money-raising plans conceived and executed by any one group were the Campus Fair Queen contest and the Campus Fair—and the group is the Alpha Phi Omega Service Fraternity.

Despite the fact that this organization consists of only a small number of members, it has jumped feet first into the campus swim and is practically up to its collective ears. APO's energy and initiative were never better displayed than in their handling of the Campus Chest.

They learned that Milt Roberts, co-ordinator of student affairs, had no one to run Campus Chest activities not already under the auspices of the SGA. Alpha Phi Omega volunteered to be responsible for a segment of this program and began in December to draw up plans for it. Bill McLain, the fraternity's corresponding secretary, chairmanned the contest committee. Dormitories and fraternities were asked to sponsor booths at the Fair and to nominate women for queen. The success of their efforts can be measured in cold cash. They cleared more than \$250 at the Fair and over \$260 on the penny-a-vote queen contest—a total of better than \$500.

This has not been APO's only contribution to the university; they have ushered for all the music department's programs except the Artist Series; during the freshman week they helped with the speech screening tests; when the reading clinic was held on campus they acted as guides and information-dispensers for the numerous visitors; and so the list goes on.

Their accomplishments are enhanced when you realize that this is a small group. Whether their previous experience in Scouting is responsible for their initiative and spirit of service to the university, we cannot tell, but they are to be congratulated for their contribution to university life.

Alpha Phi Omega as a national organization, has 280 chapters in the United States and foreign countries.

We do not have room to list the names of all of the APO members, but we can mention its officers: Thomas Lennox, president; Jim Zawicki, vice president; William McLain, corresponding secretary; Jerry Katz, recording secretary; Bob Stucklen, alumni secretary, and Jim McKenney, treasurer.

THE APO MEN AT COMMENCEMENT

By Francis J. Kafka

Scouting Advisor, Lambda Theta Chapter, Columbia College

Stop and rest, weary climbers,
You made the journey and you've won.
Rest your bodies, tired, ragged,
Sacrificed to greater things.
You set the goal; the summit's reached.
Stay awhile.
Look far down the valley.
It seems serene at last.
You made it so. The countless feet
That trod the ground
Walk with pride.
As you walked.
The sun a sparkling fountain
Bathes the earth today.
It never shines the same again.
Take your rest, valiant hikers.
To you alone there comes
Satisfaction;
Joy of perseverance;
Pride in work that's done—
The prize that goes to those alone
Who know the joy of completion.



SAY,
DID YOU
KNOW?

—That since our previous issue four more groups have applied for new charters in Alpha Phi Omega. These groups are located at Colgate University, Hamilton, New York; Pennsylvania State Teachers College, California, Pennsylvania; Morgan State College, Baltimore, Maryland, and College of Great Falls, Great Falls, Montana. Ballots have been sent to all chapters for voting on these new petitions.

—That the Third Biennial Pilgrimage to Lafayette College, birthplace of Alpha Phi Omega, was a fine success. A story about it will be published in our next issue.

—Life Membership in Alpha Phi Omega offers opportunity to keep in touch with Alpha Phi Omega by means of the TORCH AND TREFOIL throughout your lifetime. The Life Membership fee is \$25.00.

—The Ugly Man Contest is one of the most popular AΦΩ projects throughout the nation.

The above editorial is a fine tribute to the work of Zeta Sigma Chapter at the University of Delaware. Within a short period of time the chapter has developed an excellent program.

A Feature Project . . .

HOMECOMING PARADE

By Thomas M. Cook

Secretary, Gamma Gamma Chapter, University of California

Why is a Homecoming Parade a worthwhile activity? The answer is three-fold:

First, it is of great service both to the student body and faculty and to the community because it provides a means whereby the pre-game enthusiasm of the students can be channeled into constructive rather than destructive activity. For the past four years Gamma Gamma Chapter has been in complete charge of the Homecoming Parade here at the University of California, and since we took over this project the amount of vandalism during Homecoming Week has been greatly reduced.

Second, the parade provides excellent opportunity for development of leadership in the chapter. Members can advance to positions of greater responsibility each year.

Third, the parade provides excellent publicity for the chapter, bringing Alpha Phi Omega to the attention of the entire student body and faculty.

The key to the success of the Homecoming Parade is careful planning and organization. This consists of several elements. First, is the appointment of a Chairman who is willing and able to delegate responsibility to others. Then it is necessary to carefully analyze the jobs to be done and group these jobs into logical units of work. Next, is the preparation of an organization chart, list of specific duties, deadlines, list of equipment needed, etc., and the careful selection of sub-chairmen. This organization chart and list is extremely useful to the chair-

man when he wishes to check to see just what jobs remain to be handled. Also, it eliminates the "what have I forgotten" feeling.

The skillful coordination of the activities of all the people working on the project is vital. This consists of three elements.

A. *Coordination between the Parade Committee and the student body, university and city officials.* For example, the Chairman must deal directly with the heads of both the University and Berkeley Police Departments, the Berkeley Fire Chief, the Dean of Students, the Director of Buildings



In the top picture, three sorority girls are busily working on their float the night before the Homecoming Parade. Many hours of work were required on each of the many floats.

At right is shown one of the fraternity floats as it moves along in the parade. In the distance another float is shown going through a gate near center of University of California campus.

and Grounds, the Homecoming Week Committee, and various other student body officials. It is very important that all arrangements and agreements with these officials be completely understood by all persons involved.

B. Coordination between members of the Parade Committee. Periodic conferences are very helpful.

C. Coordination between the preliminary arrangements and parade day operations. For example, we now have the Assistant Parade Operations Chairman plan the radio net and also run the communications center on parade day. Previously the person obtaining the radios was serving under the Preliminary Arrangements Chairman and the Communications Center Head was a different individual. As a result, coordination was much more difficult.

The careful scheduling of work is necessary. This means allowing plenty of time for the completion of each job. As a volunteer organization we must recognize that the members have many other demands on their time, are likely to forget what they are to do and are often quite inexperienced. Therefore, there should be enough "margin of error" so that mistakes and difficulties can be cleared up before it is too late to do anything about them.

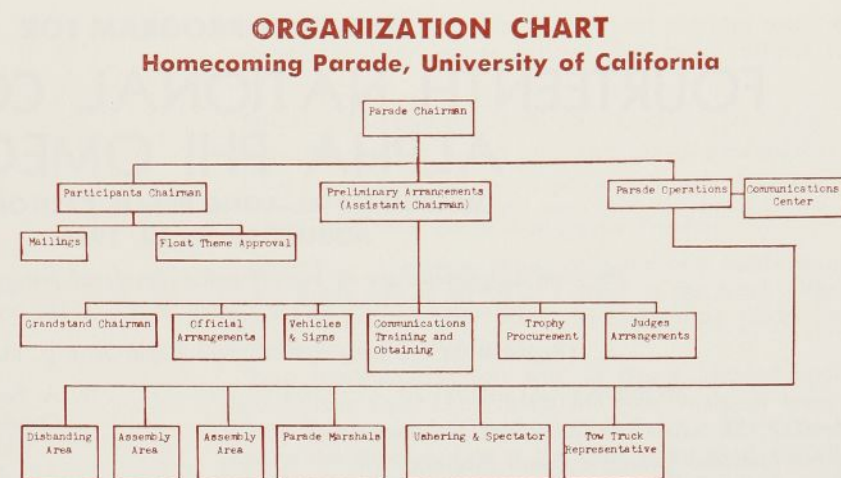
The Chairman must periodically check up on the work of his subordinates and make sure that they understand their jobs and are doing them properly. He must realize that a large project such as this is a team effort requiring the enthusiastic support of the whole membership. He must continually try to give the members an understanding of the project's significance and of where they fit into the total picture.

The public relations aspect of this type of project should be carefully handled. Our chapter has gained the respect and confidence of the University, Berkeley city officials and the student body and we make every effort to see that this confidence and respect are maintained.

The following is a description of responsibilities used in our 1955 Homecoming Parade:

PARADE CHAIRMAN

Duties: Organize parade; prepare T/O&E; determine parade route; make contacts with the city and university; delegate authority and responsibility and select sub-chairmen; attend all parade-related meetings; Homecoming Week planning group, Homecoming Week Committee, and Parade Censor-



ship Committee; obtain parade permit from Berkeley Police Department.

Equipment: 1 British car, radio and operator.

PARTICIPANTS CHAIRMAN

Duties: Prepare all entry blanks and correspondence; have stencils cut and material mimeographed at ASUC Store; make up parade order; draw parade route map; procure bands, drill teams and color guard—sending personal invitations to last year's participants; negotiate with local Musicians' Union to allow more band participation; send thank you notes to units participating.

Mailing Committee

Do work assigned by Participants Chairman, such as addressing envelopes, mailing letters through ASUC mailing service, etc.

Float Themes Chairman

Keep file of entry blanks; personally check each application before it is filed; check to eliminate float theme conflicts or duplications; assist Participants Chairman in making up parade order; make sure float application is dated as it is received.

PRELIMINARY ARRANGEMENTS CHAIRMAN (ASS'T PARADE CHAIRMAN)

Duties: Assist Parade Chairman in selecting sub-chairmen for preliminary arrangements committees; keep track of progress made by committees; act as assistant to chairman, keeping informed on all phases of parade progress; coordinate publicity for parade with publicity for Homecoming Week through Homecoming Week Publicity Chairman; make especially sure deadline notices and essential parade information get published in "Daily Californian"; send parade publicity to "Torch and Trefoil."

Official Arrangements Chairman

Duties: Make arrangements with censors, who will be picked by the Dean of Students Office; arrange for printing of armbands, materials and grandstand passes; two weeks before parade, take copy for passes and armbands to printers (they should be ready eight days in advance); one week before parade find out which A Phi O members need University excuses and obtain them; prepare censorship passes; day of parade set out armbands (and pins) for parade personnel;

1½ hours before parade is to start brief censors who will report to Virginia and Shattuck; during parade, remain with censor teams.

Equipment: Mimeographed material; radios for each censor team; printed armbands and pins.

Trophy Procurement Chairman

Duties: Obtain the following trophies for award and arrange for delivery:

Division I (single groups)

Beauty
Originality
Humor

Division II (any combination of two groups)

Beauty
Originality
Humor

Interclass perpetual trophy
Sweepstakes trophy

Judges Arrangements Chairman

Duties: Five days before parade—prepare judging forms; they should be completely finished two days before parade; on day of parade—meet with judges selected by Homecoming Committee, brief them (explain award structure, etc.), and take them on drive through the assembly area; after the parade—stay with judges and assist them by providing any information they need.

Equipment: Judging forms, set of post cards returned by float chairman, armbands, new American convertible for drive through assembly area.

Vehicles and Signs Chairman

Duties: Five weeks before parade—contact auto dealers; four weeks before parade—obtain jeeps from ROTC or 505th M.P. Bn. at the San Francisco Presidio; one and one-half weeks before parade—begin work on signs for vehicles (they should be finished three days in advance); one and one-half hours before parade leaves assembly area—attach signs to vehicles at Virginia and Shattuck.

Equipment: Signs and tape to attach them. Four jeeps

1. Division I Marshal
2. Division II Marshal
3. Assembly Area Marshal
4. Parade Operations Chairman

(Continued on page eleven)

TENTATIVE PROGRAM FOR FOURTEENTH NATIONAL CONVENTION ALPHA PHI OMEGA

WILTON HOTEL—LONG BEACH, CALIFORNIA
AUGUST 28 TO 30, 1956

Program assignments are in process and a completed program booklet will be presented to each delegate upon arrival at the convention.

(Registration for early arrivals will begin at 1 p. m., August 27)

MONDAY, AUGUST 27

- 4:00 P. M. Advance Committee Meetings
- 6:00 National Executive Board Meeting
- 8:00 Reception by Host Chapters (for delegates arriving early)

TUESDAY, AUGUST 28

- 8:00 A. M. Registration
- 9:00 OPENING SESSION OF CONVENTION
 - Long Beach Band Welcome
 - Invocation
 - Color Guard with United States and Philippine Flags
 - Pledge of Allegiance
 - Welcome by Host Chapters
 - Greetings by Long Beach Area Council, BSA
 - Appointment of Floor Committees
 - Recognition of Host Committees
- 10:30 Reports of National Officers
 - National Editor
 - National Treasurer
 - National Third Vice President
 - National Second Vice President
 - National First Vice President
 - National Secretary
 - National President
- Credentials and Roll Call by States
- 12:30 P. M. FELLOWSHIP LUNCHEON honoring Dr. Ray O. Wyland
 - Singing
 - Welcome by City of Long Beach
 - Appointments of Legislative Committees and Training Group Leaders
 - Address
- 2:30 P. M. Training Groups
 - 1. The Chapter Executive Committee (Presidents, Vice Presidents)
 - 2. Service Committee Operation—How to Plan a Project (Service Vice Presidents, Service Committee Chairmen)
 - 3. Rushing—How to Recruit (Membership Vice Presidents, Membership Chairmen, Rush Chairmen)
 - 4. The Treasurer and his Finance Committee (Treasurers and Finance Chairmen)

- 5. A Sectional Conference—How to Plan and Conduct it (Alumni, Presidential Representatives and others)
- 6. The Secretary's Job—Minutes, Reports, etc. (Recording Secretaries, Corresponding Secretaries)
- 7. An Impressive Ritual—It means much (Ritual Team members and others)
- 8. The Advisory Committee (All Advisors not otherwise employed)

- 4:00 P. M. Legislative Committee Meetings (Free time for others)
 - Constitution and By-Laws Committee
 - Nominating Committee
 - Time and Place Committee
 - Resolutions Committee
- 6:30 Dinner (on your own)
 - Address
 - Song Fest and Smoker
 - Free time
 - Coffee Bar

WEDNESDAY, AUGUST 29

- 7:30 A. M. Sectional Meetings
 - Breakfast (on your own)
- 9:00 Time and Place Petition
 - Greetings from Order of the Arrow
 - "Professional Service in the Boy Scouts of America"
 - Time and Place Petition
 - "Responsibilities of the Advisory Committee"
- 10:30 A. M. Discussion Groups (Legislative Committees continue)
 - Membership
 - Service Projects
 - Social Events
 - Alumni Relations
 - Money Raising Projects
 - Publicity and Public Relations
- 12:30 P. M. Lunch (on your own)
- 2:00 Convention Photograph
- 2:30 Time and Place Petition
 - Discussion Group Reports
 - Constitution and By-Laws Legislation
 - Time and Place Petition
 - Question and Answer Period
- 4:30 Election of National Officers

7:00 CONVENTION BANQUET

Entertainment
Distinguished Service Awards
Songs
Address

9:30 Rededication Ceremony

THURSDAY, AUGUST 30

9:00 A. M. Time and Place Selection for 1958 National Convention

Resolutions
Address
Installation of Officers
National President's Acknowledgment
Closing Ceremony

12:00 Noon Adjournment

12:30 P. M. Meeting of National Executive Board

ARRANGEMENTS FOR THE CONVENTION

Excellent plans are underway for the 1956 National Convention of Alpha Phi Omega. Interest runs high among chapters throughout the nation in preparation for this important meeting.

Location and Time

As previously announced, the convention will be held at the Wilton Hotel, Long Beach, California. The first session will begin at 9:00 a. m., Pacific Daylight Saving Time, Tuesday, August 28, and the convention will extend until 12 noon, Thursday, August 30, 1956.

Purposes

There are three basic purposes of the convention: First, to review the accomplishments of Alpha Phi Omega and provide helpful exchange of ideas about service projects, methods and the "know-how" of chapter operation. Second, to formulate plans and policies which will guide our fraternity during the next two years. Third, to provide good fellowship and personal acquaintanceship among chapter representatives from all parts of the United States.

Participation

As set forth in the National Constitution, two official delegates from each chapter will have power to vote on questions which come before the convention assembly. One of these delegates should be a student and the other an advisor, if possible. All student delegates must be active members of their respective chapters. In addition, each chapter is welcome to send as many non-voting representatives as can come. Every member who attends will have the full privileges of the convention, with the exception of voting. Visitors are also welcome. College and university officials, Scout leaders, and others who are interested in learning more about Alpha Phi Omega are invited to attend the convention as visitors.

Costs

The "high cost of living" prevails at conventions the same as everywhere else. But fortunately we have been able to secure arrangements at Long Beach's largest hotel

at prices comparable to those paid at our previous national conventions. They are as follows (all being subject to change):

Fellowship Luncheon, August 28: \$2.25 including tax and tip.

Convention Banquet, August 29: \$3.50 including tax and tip.

Hotel Room: \$4.00 and up per person each night depending upon the type of room. All room rates are shown on the reservation sheet sent to each Chapter President.

According to present plans, only the two meals mentioned above will be served as a group at the hotel. Other meals will be "on your own." Several eating places are available in or near the hotel.

Your transportation cost will, of course, depend upon your distance from Long Beach and your means of travel. Where feasible to drive by car, with four or five fellows sharing the expense, this is the most economical for all. For plane, train or bus transportation, please check with your local ticket offices concerning fares, or write to Dr. Henry S. Miller, Queens College, Flushing 67, New York, Convention Promotion Chairman, concerning group transportation.

Parking space for cars is available in parking lots near the hotel at various hourly and daily rates.

There will be no registration fee for the convention. General meeting rooms and committee rooms are being furnished by the hotel without extra charge. The overhead expense of the convention, such as registration, entertainment, decorations, discussion group materials and similar items will be paid by the host chapters and the national fraternity, so the cost to the chapter representatives will be only the actual prices of hotel, meals, transportation and personal incidentals.

Residents of the area and others who have relatives or friends with whom they may stay (thus eliminating the lodging expense) are perfectly welcome to do so.

It is customary that the chapter treasury, if sufficient to do so, pay part or all of the expenses of two delegates,

(Continued on page nine)

A View of Downtown Long Beach





LARGEST UGLY MAN CONTEST ON RECORD

GAMMA GAMMA CHAPTER at the *University of California* at Berkeley has reported a gross total of \$6,676.87 in its annual Ugly Man Contest conducted this Spring. The proceeds were donated to the World University Service. This is the largest total ever reported to our National Office by any chapter in this project. Congratulations to Al Wade, Contest Chairman, and to all members of Gamma Gamma Chapter upon the record they have established in the Ugly Man Contest and upon the very worthy purpose to which the money has been contributed.

17,000 Letters

ZETA KAPPA CHAPTER at *Bowling Green State University* gave important service in the Easter Seal campaign by stuffing 17,000 envelopes for the National Society for Crippled Children. Also recently a blood drive was conducted on the campus under chapter sponsorship which netted 288 pints of blood for the Red Cross. The chapter also takes pride in having helped establish Omega Phi Alpha, the girls' service organization on the campus. Since the founding at Bowling Green two years ago the organization has spread to four neighboring campuses and is taking steps to obtain national standing. This is reported by John Lepp, Historian.

Assist World University Service

IOTA MU CHAPTER at the *University of South Carolina* is helping with the World University Service Drive. This is reported by Robert Grosse, Treasurer.

Ugly Faculty Contest

This year, instead of having an Ugly Man Contest, GAMMA IOTA CHAPTER at *Brooklyn College* has conducted an Ugly Faculty Contest and contributed the money to the World University Service. With six of the most popular instructors as contestants, this was a fine success. The Chairman was Paul Budin and this news is from Laurence A. LeShay, Corresponding Secretary.

Car Washing for Convention Fund

LAMBDA BETA CHAPTER at *Houghton College* is carrying on a car-washing program to raise funds for sending delegates to the National Convention, Long Beach, California, August 28 to 30. This is reported by Howard R. Patton, Presidential Representative.

SCHOLARSHIP FUND AT BRIDGEPORT



The McLevy Scholarship Fund of the University of Bridgeport has been boosted by a contest sponsored by Theta Psi Chapter of Alpha Phi Omega. In the picture a student contributes while three APO chapter members are on duty at the table. The members are, left to right, Joseph Kraynak, Vice President; Ralph True, Treasurer; and George Saranich, President. The trophy was presented by Theta Psi Chapter to the organization contributing the highest amount to the fund. Scholarships from the fund will be granted by the university to needy students.

Money for Charity

GAMMA OMEGA CHAPTER at *New York University* played a major role in raising of funds for the Campus Chest Charity Drive, the proceeds of which were given to World University Service, the Mental Health Foundation, and the Multiple Sclerosis Society. The chapter conducted a successful penny line-up, the object of which was to see which class would form the longest line of pennies on the Mall, and collected over \$100.00. The chapter also operated the ticket selling booth at the Campus Charity Carnival. Perhaps the highlight of the efforts was the chapter's production of the Annual All-University Talent Show directed by Brother Howard Cooperman. The talent was drawn from the undergraduate students of the University and the judging was done by show world notables. This was an enthusiastic success. Proceeds of over \$250.00 were turned over to charity. This is reported by Stanley L. Spiegel, Past Historian.

Aid Campus Chest

PHI CHAPTER at *Syracuse University* recently conducted a very successful Ugly Man Contest and contributed the proceeds to the Campus Chest. This is reported by Burton L. Jones, Chairman of the Contest.

CONVENTION ARRANGEMENTS

(Continued from page seven)

and thus not depend entirely upon members who are able to pay their own way.

How to Register

Registration information has been sent to all chapter officers and advisors in the National Bulletin. Forms for sending in the roster of delegates and for making hotel reservations have been furnished to each Chapter President. See your President about registering with your chapter delegation!

Alumni and others who desire to attend who are not now directly connected with chapters may secure further details by writing to our National Office.

Exhibits

An interesting part of each National Convention is the chapter exhibits. These consist of posters showing pictures, clippings, newsletters, printed programs, etc., pertaining to service projects; also scrapbooks, pledge plaques, special awards and other items. A special bulletin about this has been sent to each chapter by the Exhibits Committee.

Don't Miss It!

This convention will be a highlight in the APO experience of everyone who attends. Be in Long Beach August 28 to 30, and take part in this fine program with brothers from all over the United States!

SEVEN MEMBERS OF ALPHA PHI OMEGA IN THE 186TH NATIONAL TRAINING SCHOOL FOR PROFESSIONAL LEADERS IN SCOUTING

Each session of the National Training School for Professional Leaders in Scouting finds several Alpha Phi Omega members enrolled. In the picture at right are shown seven members who were in the class which graduated April 5, 1956.

In front row, left to right, are Donald L. Dickerson, G. Jay Heim and Bill D. Sherman, all from Epsilon Epsilon Chapter, Missouri Valley College.

In back row, left to right, are Antone Weiler, Beta Theta Chapter, University of Wisconsin; Duane L. Pifer, Gamma Phi Chapter, Western Michigan College; W. Jerome Denman, Iota Eta Chapter, American International College, and Gordon Osborne, Gamma Gamma Chapter, University of California. Brother Osborne was elected Honorary Senior Patrol Leader at this session of the National Training School.

The picture was taken at the Schiff Scout Reservation, Mendham, New Jersey, and was received through the courtesy of Ernest F. Schmidt, Director of Camping at the reservation.

On the wall in the background is a portrait of Dr. James E. West who served for thirty years as Chief Scout Executive. He died in 1948. Alpha Phi Omega's nationwide pledge class of the Fall Semester 1949 was dedicated in his memory.

Professional service in Scouting offers a fine opportunity for a very useful career for a limited number of well-qualified young men. APO men who are interested in obtaining more information about career service should contact the Scout Executive either in their home town or college town.



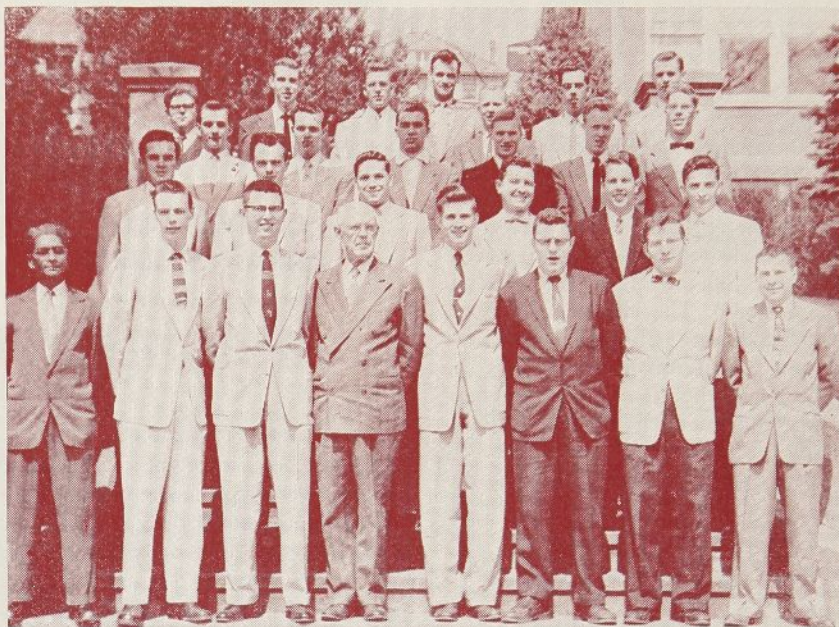
Lincoln Pilgrimage

Sunday, February 12, marked the date of the annual pilgrimage of Ripon area Scouters to the statue of Abraham Lincoln on the *Ripon College* campus. LAMBDA ZETA CHAPTER was active in assisting the Badger Council with the day's program. Dr. Edwin Webster, Chairman of the Advisory Committee and Professor of History at the College, delivered the principal address to the assembled Scouters after being introduced by Chapter Treasurer, Dick Christensen. Others working on the pilgrimage were Paul Frazer, John Berens, Bruce Holdsworth, John Stedman, Dave Emch, Frank Currier, Ken Benson, and Jack Nozel.

Transfer Orientation

This past February, ZETA UPSILON CHAPTER at *Boston University* organized and administered a transfer student orientation program to help students who had entered from other colleges become acquainted with the University. This is just one of numerous projects reported by Dr. Edward C. Bryant, Chairman of the Advisory Committee.

LAMBDA TAU CHAPTER INSTALLED AT SALEM COLLEGE



Shown here are charter members of Lambda Tau Chapter of Alpha Phi Omega recently installed at Salem College, Salem, West Virginia. Brother M. R. Disborough, National President, officiated at the ceremonies and the ritual was conducted by the degree team of Lambda Omicron Chapter of West Virginia University. This new chapter already has a fine service record and we extend best wishes to the group for continued success.

Newsletter Clips

What's Been Goin' On

From "Dragon Tales," the newsletter of Zeta Theta Chapter, Drexel Institute of Technology.

The winter term Campus Chest drive was the most successful in several years, netting over \$900.00. The drive was ably handled by Men's Student Council, with AΦΩ providing the publicity and general manpower. Ed Harrison did an excellent job as chairman of entertainment. In the class division, the pre-juniors proved the most generous, and the engineers came out on top in the competition between schools. Our thanks to all who helped to make this drive a great success. On February 20, 110 pints of blood were extracted from the student body and faculty. In addition, six pints were donated by employees of the nearby Motorola plant. Jay Hood handled the blood drive very smoothly.



Letter from the President

Reprinted from the newsletter of Lambda Zeta Chapter, Ripon College.

We now have a pledge class. Eight pledges will be working hard to win your approval on their service in our four-fold program. Remember that you, too, were once a pledge working on pledge projects. Remember the zeal with which you carried them out. Also remember that as actives it is your duty to set the example. It is to we actives that the pledges look for leadership. Now is the time for we actives to work that much harder to prove that those lowly pledges are not capable of greater service than those who have been through the program and who know the ropes. Let's hear none of that, "Let the pledges do it!" attitude that sometimes pervades fraternities in general. Let's have more of that, "Let's show the pledges how it's done!" attitude and we as actives and

Lambda Zeta Chapter as a whole will be richer for it.

On the tenth of April, less than a month away, we will hold our Spring elections. As I see my term of office rapidly drawing to a close, I feel moved to thank all of you who cooperated in keeping Lambda Zeta one of the best chapters in the nation. But things were not perfect. Let each of us take stock of his work. Figure out the plusses and the minuses and then let's take all the minuses and make them plusses.

—John Berens, President

Improved Book Exchange

The newsletter of ALPHA LAMBDA CHAPTER at *North Dakota State College* reports that the Book Exchange is operating under an improved system this semester.

Donations to Charity

ALPHA PHI CHAPTER at *Washington University*, St. Louis, donated a total of \$883.95 to charitable purposes in the past semester. This is reported by Stanley E. Schwartz, President.

HOMECOMING PARADE

(Continued from page five)

Three open foreign cars

1. Parade Chairman
2. Censor Team
3. Censor Team

Four open American cars

1. Homecoming Sweetheart
2. Sweetheart's attendants (2)
3. Sweetheart's attendants (2)
4. Honorary Grand Marshal

Communications Obtaining and Training

Duties: Check with ROTC regarding use of radio equipment; two weeks before parade—obtain permission from Buildings and Grounds to use University telephones and other facilities of this nature; test radio net; one week before parade—have instruction sheet completely finished and announce time and place of radio operator training session; morning of parade day—conduct training session; during parade—operate communications center.

Equipment: Five AN/PRC—10 radios

1. Communications center
2. Division I Marshal
3. Division II Marshal
4. Assembly Area Marshal
5. Parade Operations Chairman

Four AN/PRC—6 radios

1. Parade Chairman
2. Disbanding Area Marshal
3. Censor Team C
4. Censor Team D

One AN/PRC—70 radios

1. Tow Truck
- Three telephones
1. Communications Center
2. Grandstand
3. Censor Team A

Communications annex to T. O. & E. sheets for parade personnel.

Grandstand Chairman

Duties: Three and one-half weeks before parade—prepare guest list for grandstand (See ASUC Activities Director and 1954 list); obtain grandstand and rope barricades for grandstand area, P.A. systems for both grandstand and disbanding areas; arrange for electricity for both P.A. systems; three weeks before parade—obtain M.C. for grandstand; send out invitation letter and return address post card to those on guest list. One week before parade—send out grandstand passes and letter of acknowledgement (stamp passes on back); on parade day—see that "No Standing Areas" are marked off with carpenter's chalk; act as chairman of ushering and spectator control.

Equipment: P.A. systems, passes, rope barricades, and chalk.

PARADE OPERATIONS CHAIRMAN

Duties: Assist Parade Chairman in selecting sub-chairman for parade operations committees; keep track of progress made by committees and coordinate their work; patrol parade during its movement and inform grandstand of any last minute changes by phone; help with assembly area marshalling and moving of personnel out of assembly area.

Equipment: Radio, large map of parade route and pins to keep track of location of marshals, etc.; jeep.

Disbanding Area Marshal

Duties: Formulate a plan for disbanding area operations and make sure that every man is assigned a specific duty and area to work with; make sure a man is posted at every exit to see that all of the float structure is dismantled (except for large lumber) before it leaves disbanding area; make arrangements with Buildings and Grounds for use of disbanding area; be in area from 3 to 6 o'clock of parade day.

Equipment: P.A. system for directing traffic into assembly area from Oxford and Cross Campus Road.

Personnel: Ten men.

Ushering and Spectator Control

Duties: Direct ushering operation at grandstand; keep out unauthorized personnel; keep spectators in grandstand area away from parade route by using rope barriers and personnel; see that rope barriers are set up; be in grandstand 1:30 to 5:30.

Equipment: Grandstand, P.A. system, rope barriers, carpenter's chalk, armbands.

Personnel: Four ushers and ten men for spectator control.

Parade Marshals Div. I.

Duties: Assume responsibility for parade division once it moves out of the assembly area; he should pace the parade, keep in touch with communications center, and assist parade units; be with parade 1 to 6 o'clock of parade day.

Equipment: Two radio-equipped jeeps with operators (Ass't Parade Marshals).

Assembly Area Marking Chairman

Duties: Mark positions for units of parade in streets of Assembly Area.

Equipment: Carpenter's chalk for marking and map of area to be marked.

Personnel: Six men.

Assembly Area Marshal

Duties: Get participants into position so that parade may start on time; prepare final parade order after 1:30 arrival deadline; notify grandstand of any changes in parade order by 2:15; form and marshal late units throughout parade; assign personnel in area to specific areas and inform them to enforce regard for private property in the assembly area; see that assembly area map is up-to-date—it will be located at Virginia and Shattuck; be with parade from 12:00 on.

Schedule for Assembly Area

12:15 Station man at Milvia Street to direct band busses.

12:45 Assembly Area crew reports for briefing. Each man should be assigned a specific duty and area.

1:00 All vehicles at Virginia and Shattuck.

Signs on vehicles.

Censors report for briefing.

1:30 Unit entry deadline

Personnel riding in vehicles report.

2:30 Parade leaves assembly area.

3:30-4:00 Move all personnel out of area to areas where they are needed.

Equipment: Large map of assembly area with pins to keep track of parade units; two jeeps (one will be operated by Parade Operations Chairman) with radios and operators.

Personnel: 14 men.

Tow Truck Representative

Duties: Stay with tow truck during course of parade for directing driver to trouble spots.

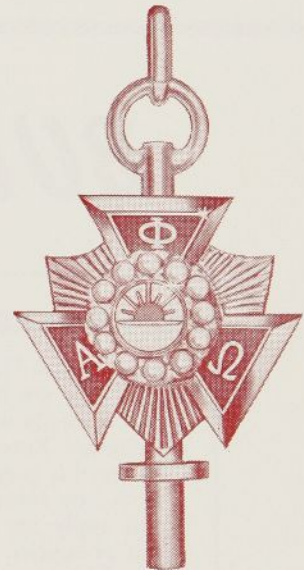
Equipment: Armband, radio.

Of course, the plans for a Homecoming Parade depend greatly upon the size of college or university and the number of organizations which will participate. The arrangements described in this article pertain to a large university and can be adjusted to fit smaller campuses.

We feel that the Homecoming Parade can be interesting and worthwhile on campuses of all sizes, giving opportunity for the students to utilize their talents and enthusiasm in a constructive manner.

Editor's Note: The author of the above article, Tom Cook, was Parade Chairman at the University of California for the 1954 Homecoming. The information and suggestions he has offered are given from his experience as head man of this big event of Gamma Gamma Chapter.

Do You Wear an Alpha Phi Omega Pin or Key?



If you have not yet purchased a pin or key, get one as soon as convenient. You will enjoy wearing APO insignia. Above is pictured the standard pearl center key which costs \$15.00, plus ten per cent federal tax and any state and city tax which applies in your locality. Other qualities of pins and keys are priced from \$2.50 to \$26.00.

An illustrated list is available upon request to our National Office. Also, if your chapter treasurer does not have Balfour order blanks on hand, a supply can be obtained by writing to our office.

How About Summer Promotion?

HERE ARE WAYS YOU CAN HELP BUILD ALPHA PHI OMEGA DURING THE SUMMER MONTHS

On the campus, if enough members are enrolled for the Summer term, it is appropriate to continue at least a limited program. Colleges which are on the cooperative system particularly have opportunity to proceed with AΦΩ projects during the Summer months.

In your home town, aid Scouting in every way you can this Summer. Give a boost to a Troop or Pack or help in Explorer activities. "Talk up" Alpha Phi Omega among fellows who are or have been in Scouting and are planning to enter college in the Fall. A good place to contact prospective pledges is at the Scout Camp—talk to staff members who have graduated from high school and are ready for college. For fellows who are planning to attend a college other than yours, send their names and addresses and the name of the school they will attend to our National Office for referral to other chapters.

By correspondence keep in touch with the other officers and advisors of your chapter to coordinate plans for the new year. Also, write to brothers in the armed forces to keep them informed about Alpha Phi Omega.

By wearing your recognition button and pin, let others know you are affiliated with Alpha Phi Omega.

And above all, live by the principles of Alpha Phi Omega and set an example for others by exemplifying our program of Leadership, Friendship and Service.

BULLETIN BOARD

INTERNAL REVENUE REPORT

Each Alpha Phi Omega Chapter is required by law to file an income tax return annually with its local Director of Internal Revenue. Form 990A is used for this purpose.

It is not necessary for each chapter to apply for exemption. The letter of exemption received by the National Office covers all chapters. Your chapter does not need to pay any tax, but the filing of the return as a non-profit organization is required.

It is important that your chapter keep accurate financial records so you can fill out the return at the end of your fiscal year.

MAILING LIST

Do you know of anyone in your chapter who does not receive the Torch and Trefoil? If so, we urge you to notify our National Office.

We are endeavoring to deliver the magazine correctly, and are trying to keep all addresses up to date. Sometimes a member may move to a different residence without sending notice to the office. This causes his next copy to be returned and he is removed from the mailing list until we receive a corrected address. Also, sometimes an error on an addressograph plate causes loss of a copy. Your help will be appreciated.