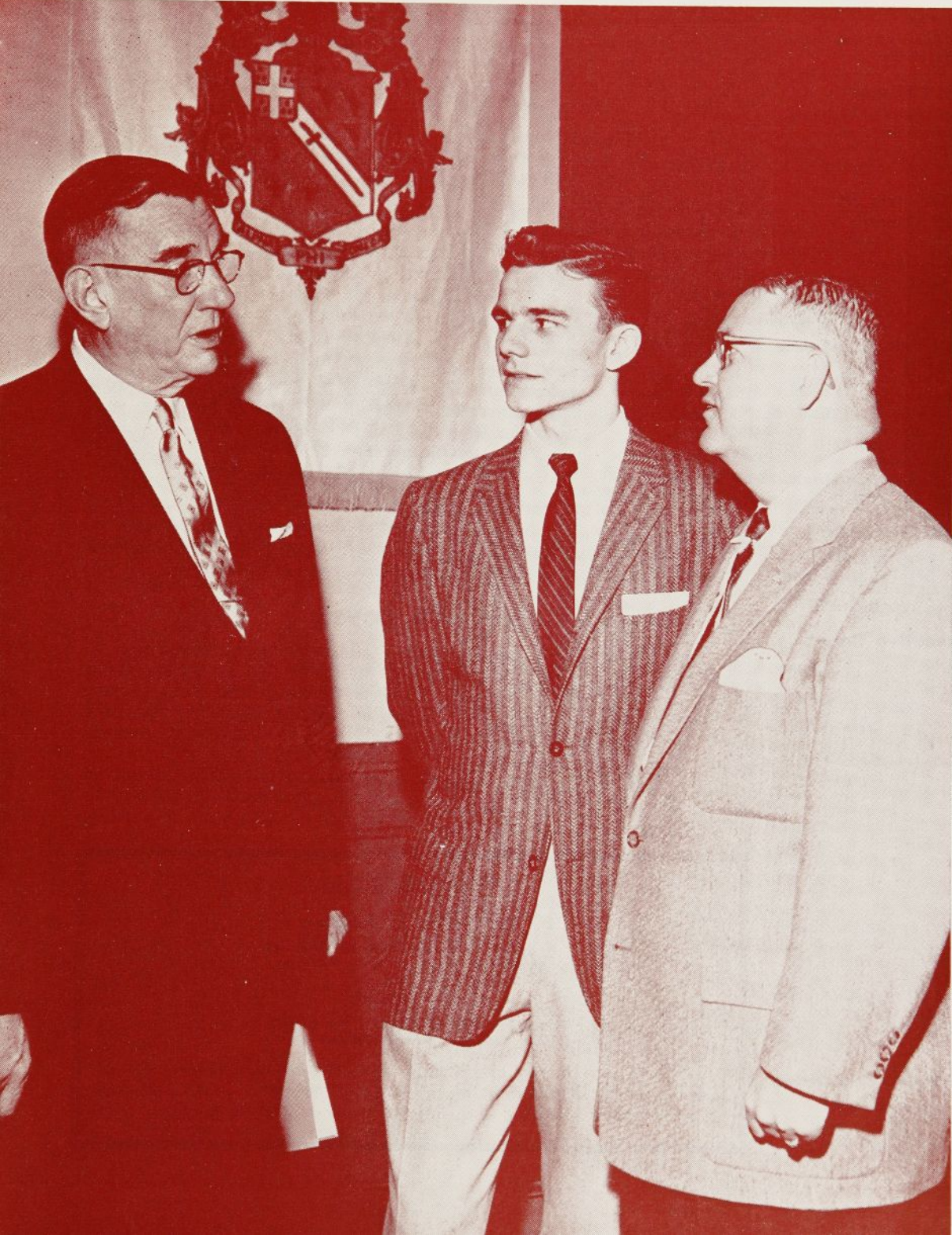




# *Torch and Trefoil*



APRIL  
1957



## TORCH and TREFOIL

Volume 32, No. 4

APRIL, 1957

Issued regularly eight times a year, monthly  
October through May.  
Subscription price \$1.00 a year

Entered as second class matter February 5,  
1938, at the post office at Kansas City, Mo.,  
under act of March 3, 1879. Office of publica-  
tion, 419 Columbia Bank Bldg., Kansas City,  
Missouri.

Printed by

Smith-Grieves Company, Printers & Lithographers  
Kansas City, Missouri

### Honorary Officers

K. K. Bechtel...San Francisco, California  
*Honorary National President*  
John M. Schiff...New York, New York  
*Honorary National Vice President*

### National Officers of Alpha Phi Omega

M. R. Disborough...Louisville, Kentucky  
*National President*  
William S. Roth...Raleigh, North Carolina  
*National First Vice President*  
Irwin H. Gerst...Hawthorne, California  
*National Second Vice President*  
E. Ross Forman...Philadelphia, Pennsylvania  
*National Third Vice President*  
Joseph Scanlon...Yakima, Washington  
*National Treasurer*  
George H. Charno...Kansas City, Missouri  
*National Legal Counselor*  
A. G. Spizzirri...Kansas City, Missouri  
*National Editor*  
Sidney B. North...Kansas City, Missouri  
*National Executive Secretary*

### Past National Presidents

Frank R. Horton...Bangor, Pennsylvania  
Dr. H. Roe Bartle...Kansas City, Missouri  
Dean Arno Nowotny...Austin, Texas  
Prof. Daniel Den Uyl...West Lafayette, Ind.

### National Executive Board

The Officers, Past National Presidents,  
and

Manfred O. Aws...Minneapolis, Minn.  
Prof. Harry C. Barnett...East Lansing, Mich.  
Dr. Glenn R. Barr...Oxford, Ohio  
Dr. R. H. Bolyard...Lafayette, Louisiana  
R. J. Bradshaw, Jr...Chattanooga, Tenn.  
Joseph A. Brunton, Jr...New Brunswick, N. J.  
George F. Cahill...Brooklyn, N. Y.  
C. J. Carlson...Riverside, California  
Benjamin F. Fay...Philadelphia, Pa.  
Dr. Robert G. Gordon...Los Angeles, Calif.  
Robert J. Hilliard...Kent, Ohio  
Dr. Lawrence L. Hirsch...Chicago, Ill.  
Dean Lewis N. Jones...Lubbock, Texas  
Stanley Livingston...Ruleville, Mississippi  
Thornton M. Long...Ocala, Florida  
Dr. Henry Miller...Huntington Station, N. Y.  
Rev. Robert J. Payne...Cos Cob, Conn.  
Dr. H. F. Pote...La Jolla, California  
Prof. Kent D. Shaffer...Pittsburgh, Pa.  
James W. Thomas...Arcadia, California  
Dr. Ray O. Wyland...Tujunga, California

### National Publications Committee

A. G. Spizzirri, *Chairman*

Rev. Robert J. Payne      Roy F. Pleis  
Stephen J. Horvath      Robert R. Weber

## Of Thee I Sing

*Kenneth K. Bechtel*, business executive and industrialist of San Francisco and President of the National Council, Boy Scouts of America, is taking a strong interest in Alpha Phi Omega. In his travels throughout the nation he is taking every opportunity to give a boost to our fraternity. He has been elected to honorary membership in AΦΩ by Mu Zeta Chapter at San Francisco State College.

*James McLinden* of Alpha Iota Chapter, Ohio State University (now an alumnus), designed the Ugly Man key several years ago and his design is used for the award key and also on publicity posters by chapters throughout the nation. James is again active in Scouting, serving as a leader in Canton, Ohio. We salute this fine brother whose talent has contributed so much to one of Alpha Phi Omega's outstanding service projects.

*Fleming Weaver*, Past President of Beta Zeta Chapter at the University of Georgia, has the distinction of having suggested and instigated the new patch of our AΦΩ emblem. Congratulations to Fleming for this excellent service to Alpha Phi Omega.

Compliments are extended to the four chapters which have served as hosts to the recent Sectional Conferences: Gamma Chapter at Cornell University, Epsilon Psi Chapter at Kent State University, Zeta Omega Chapter at Baylor University, and Chi Chapter at University of California at Los Angeles. Each chapter did faithful work in setting up the arrangements and program for the conferences.

*Stephen J. Horvath*, Past President of Eta Chapter at Northern Illinois State College, who was elected to the National Executive Board at the 1954 National Convention, is now serving in the armed forces in Germany. Steve has felt it advisable to resign from the Board because he will be out of the country for some time. We express hearty appreciation to him for his service on the Board and wish for him the best of success for the future.

Massman Hall at Rockhurst College was recently dedicated in honor of *Henry J. Massman, Sr.*, honorary member of Gamma Xi Chapter, who has been a benefactor of the college for many years. We extend hearty congratulations to Brother Massman upon his contribution to higher education.

### ON OUR COVER

Three Presidents are shown discussing Alpha Phi Omega at the Sectional Conference held at Kent State University, March 30 and 31. At left in the picture is Dr. George A. Bowman, President of Kent State University and honorary member of Epsilon Psi Chapter of AΦΩ. In center is Roy Pleis, President of Epsilon Psi Chapter, and at right is M. R. Disborough, National President of Alpha Phi Omega.

The conference, which included representatives of twelve chapters of the middle states section, was a fine success. Further news and pictures are on page ten.

### IN MEMORIAM

#### Dr. Walter W. Parker

Honorary Member, Beta Psi Chapter  
Southeast Missouri State College

#### C. Ray Franklin

Honorary Member, Alpha Mu Chapter  
William Jewell College

Elected to honorary membership, these distinguished leaders showed great interest in Alpha Phi Omega and gave fine service in our fraternity at every opportunity. We deeply regret the loss of these brothers.



# ANOTHER MILE

An Adaptation of a Story by Truman B. Douglass

By N. D. Mockler

Delta Sigma Chapter, University of Connecticut

The great road that stretched for miles in both directions was crowded. Groups of refugees on foot traveled steadily onward. Trucks, heavily loaded, passed along. A long line of workers with great bulky loads high on their backs plodded by. The boy, Frans, standing by the side of the road, watched everything with wondering eyes.

A single figure, walking alone along the crowded road, suddenly drew his attention. He could feel the hair bristle on the back of his neck as he thought, "A Russian soldier. How I hate them. If it weren't for them we would be free again. We wouldn't have to obey their laws! I hate them all!"

He stared at the Russian who was almost opposite him by now. Suddenly the soldier stopped. He shifted the heavy pack he carried and eased it down to the ground. Then he straightened up again and stood resting a moment, watching the people passing by.

Frans still stared at him, thinking angry thoughts. Then, just as the soldier turned to pick up his pack once more he noticed Frans standing not far off.

"Here, boy," he snapped. "Come here!"

Frans wanted to turn and run but he did not dare. No one dared to disobey a Russian, especially a soldier. Frans went nearer, slowly. The Russian motioned to his pack. "You will carry it for me," he said.

Now Frans knew well that there was no escape from it. He knew and hated the new Russian rule: Any soldier could "request" a worker to carry his load for him in any direction . . . for one mile.

"But only for one mile!" thought Frans, angrily, as he picked up the pack.

The Russian soldier had already turned away and started on along the road. He didn't even bother to look back to see that Frans was following him. He knew he would not dare do anything else.

Frans followed. The pack was heavy but Frans was strong. He swung along easily but his thoughts were angry. He wanted to shout with

rage at that hated Russian soldier striding ahead of him. But, he could do nothing except follow along, keeping his thoughts to himself. Others of his village passing by gave him but a furtive disturbed glance and then hurried on their way.

"Well, it's only a mile," he thought, "Just one mile."

The words made a sort of song in his mind in time to his steps. "One mile; one mile."

Then, as he was plodding along Frans suddenly remembered a story of another day when another boy had walked along another road like this: he had gone out but a little way from the city with some of his friends to find a young teacher of whom they had heard. They had found him out on the hillside among a crowd of people. The boy had stopped with the others to listen to what he said.

"What made me think of him now?" wondered Frans with one part of his mind. Another part was still repeating over and over, "one mile, one mile."

"Of course," he remembered suddenly. "The teacher had used those very words. What was it he said about one mile?" He walked on, frowning, for a moment before he could remember. Then he said the words to himself: "Whosoever shall compel thee to go one mile, go with him two," that was what he said! Frans had not paid very much attention to it at the time when he was first told of the boy and teacher. He remembered now other things of which the teacher had spoken. "Love your enemies. Do good unto them that hate you." Then once more Frans found himself repeating the strangest of them all . . . "Whosoever shall compel thee to go one mile, go with him two." Does he mean—could he mean—like now? Frans puzzled, "But why? Why should I go more than one mile?"

So busy was Frans thinking that he did not notice that the soldier had stopped, and so, he almost ran into him.

"You have come a mile," said the soldier. "Give me the pack."

(Continued on page eleven)



SAY,  
DID YOU  
KNOW?

Forms for use in preparing the Annual Activities Report have been sent to all Chapter Presidents. We urge the assistance of the other officers in assembling the information to make your chapter's report complete and accurate. This is important for National Office use.

Three new petitions have been received for establishing new chapters of Alpha Phi Omega. These groups are located at Pratt Institute, Brooklyn, New York; Luther College, Decorah, Iowa, and Lynchburg College, Lynchburg, Virginia. All have made excellent preparations and are now being voted upon in our customary process of approval.

## THE SETTING SUN

By Samuel L. Richardson

Zeta Phi Chapter, Howard University

What ends man's day of work and toil

And causes many to make ready their midnight oil?

What portrays to the birds that a day is done?

Why just the golden rays of a setting sun.

It has altered the appearance of many cloudy days

By eluding the obscurity and scattering its rays.

Man's soul is filled with a lust for fun

When this world is embellished by the setting sun.

The earth becomes quiet, the breeze becomes still;

There is luster everywhere, in the meadow, on the hill.

The fowls of the air fly from tree to tree in search of a place of rest;

For soon the day will leave and night conceive the secrecy of each feathered nest.

Now what is a better way to end a day

Of work, of rest, of sorrow and fun

Than to captivate and to appreciate The golden rays of a setting sun?



# AID TO NEW STUDENTS

## HERE'S HOW ALPHA PHI OMEGA SERVES IN FRESHMAN ORIENTATION AND REGISTRATION AT VALPARAISO UNIVERSITY

**By Raymond C. Max**  
President, Zeta Gamma Chapter

As we have done in the past, the members of Zeta Gamma Chapter of AΦΩ will arrive on the campus of Valparaiso University this coming September on Tuesday, a day before the Freshmen arrive. In the evening of the first day the men will meet for a banquet at which time plans for the following week will be formulated and discussed.

Bright and early the next morning our members will be at the train stations to greet the incoming Freshmen. Their luggage will be tagged and the Freshmen will be directed to their dormitories. Later their luggage will be delivered to them at the dorms.

Two information booths will be set up on campus. The purpose of these booths is to give directions to the new students who will arrive in their automobiles. These information booths will be maintained during the entire week.

On Wednesday afternoon tours of the campus will be conducted for the parents and friends of the new students. In the evening the social com-

mittee will sponsor a Freshmen-Get-Acquainted party to be held at the Valparaiso Student Union. The chapter will assist the social committee in typing name cards for the Freshmen and distributing them at the party.

On the following day, the members will assist the Religion and English Departments in giving placement examinations. Work will also be started on the Student Directory.

On Friday, the last day of Orientation Week, the chapter will sponsor an Organization Day. All recognized organizations will be invited to set up booths and display and explain their activities. The chapter will also maintain a booth to obtain names of prospective AΦΩ members.

On Saturday we will continue work on the Student Directory. In the evening our members will again assist the social committee in the role of group leaders for a roving party at the Valparaiso Union.

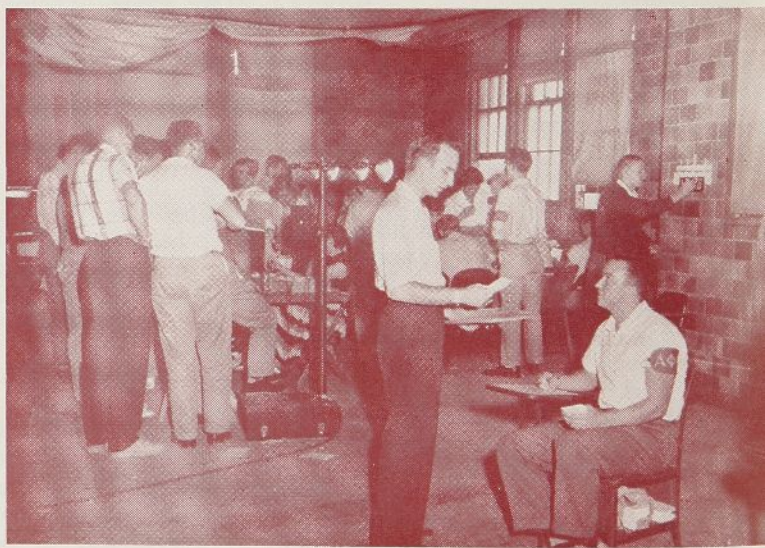
On Sunday, the chapter will attend church services as a body. In the evening there will be a brief meeting to discuss plans for Freshmen registra-

tion on the following day.

On Monday, promptly at eight a.m., Freshmen registration begins. AΦΩ members will assist all day by regulating the English line, answering the telephone, checking I. D. cards, checking and arranging registration cards, separating registration cards at the business office, and distributing notebook dividers which were obtained by the chapter. Five members will meet with the Dean of Men to receive instructions for Freshmen testing.

Tuesday will be registration for upperclassmen. All AΦΩ members will again be on hand to give the services they had rendered on the previous day. In addition, five members will conduct Freshmen testing in the morning and afternoon.

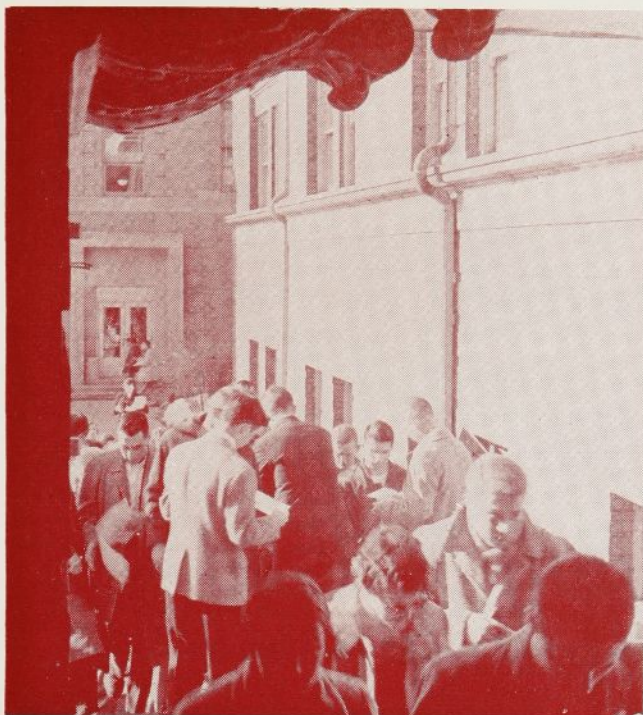
All of the members will receive a letter from the projects chairman during the summer listing the duties for the chapter during Orientation Week. With this letter will be a card on which to verify the date and time they will arrive at the university. The chairman will arrange his work schedule from the information obtained by these cards.



Shown above are two views of Zeta Gamma Chapter's service during registration. In the left picture, students are shown having their record cards checked by Alpha Phi Omega members, and at right members are shown serving at registration. In the background of the right picture members are checking cards and taking pictures for I. D. cards. In the foreground a member is shown registering cars.



## REGISTRATION SERVICE AT MICHIGAN



At the University of Michigan, Gamma Pi Chapter renders outstanding service at registration each semester. In the picture at top left are shown Gordon Parker, Lewis Bochner and Don Kay, checking ID cards for students waiting to enter Waterman Gym to enroll. The name check keeps the eager student from registering before his proper time. At top right, Bob Hicks supplies information and class cards to a freshman girl at the information desk. The lower left picture shows APO registration headquarters, the information booth, at the center of the floor. Three members are on duty at the booth at all times, and other members are stationed around the floor to watch for lost items, answer questions, carry messages and direct traffic. The booth supplies cards and forms, telephone service, lost and found, and a kind ear for all problems which arise. At lower right, George Keefer (right), and Marc Hendershott (with arm band) are shown answering a question at the desk. This news and pictures are by courtesy of Richard P. Bloss, Corresponding Secretary. Many chapters of Alpha Phi Omega throughout the nation serve during registration and orientation each semester. In every instance this is an excellent project which is of great benefit to the students and faculty.





### Outstanding Service Award

This June, the Frederick W. Maroney Award will again be presented by GAMMA IOTA CHAPTER at *Brooklyn College*. It is awarded annually to the graduating senior who has done the most outstanding service to the college and the community, and is named in honor of Dean Maroney who was a Faculty Advisor of the chapter until his retirement.

The chapter also has a thriving theatre ticket bureau with the nominal service charge going to charity, and its Used Book Exchange again grossed over \$12,000.00 in value and continues to be the main source for the students to obtain used books at the lowest prices.

An Ugly Man tea was held, at which time the award key was presented to the winner of the contest along with a certificate "attesting to his ugliness." The presentation was made by Morton Alpert, Chapter President. This news is from Albert Angel, Publicity Chairman.

### Ugly Man "Feels Good"

In ETA RHO CHAPTER's Ugly Man Contest at *Marquette University*, Chuck Rondoni, representing Alpha Kappa Psi, commerce fraternity, was announced the winner during half-time intermission of the Marquette-DePauw basketball game at the Milwaukee Arena.

"I was very surprised and happy to win," commented Chuck after receiving the award, and added that "it made me feel good all over." Rondoni received an Ugly Man key, dinner for two, theater passes, a self-portrait, a record album and a tuxedo rental certificate. In addition, Alpha Kappa Psi was presented a trophy for sponsoring the winning candidate.

Proceeds of the contest were \$937.18. All of the money goes to the building fund for the University of Korea.

### Aid to Chamber of Commerce

ZETA UPSILON CHAPTER at *Boston University* provided a group of members to serve as hosts and guides to 5,000 Bay State teachers on tour of some of the Boston institutions. This service was rendered upon request of the Boston Chamber of Commerce and was of great value to the visitors. This is reported for the chapter by Alvin S. Rosenberg.

### Ugly Man

ALPHA DELTA CHAPTER received fine publicity in the AZTEC, student newspaper of *San Diego State College*, in connection with its Ugly Man Contest recently conducted. The voting location was in the Main Quad and, as customary, the balloting was on the basis of 1c per vote. The proceeds go to Campus Chest. This was reported by Tom Henderson.

## DONATE \$1,000.00 TO LIBRARY



Shown above is Norman Weissberg, President of Gamma Iota Chapter, presenting a check to Humphrey Gambier Bousfield, Chief Librarian of Brooklyn College. This contribution of \$1,000.00 was made on behalf of Alpha Phi Omega and the Gamma Sigma Sigma Service Sorority. The money is from accumulated service charges from the Used Book Exchange and will be used for the purchase of needed books.

Professor Bousfield indicated that although Brooklyn College is one of the largest colleges in the nation, the ratio of books in its possession as compared to that of other college libraries is low. "This is the first time the campus service organizations have helped the library," he stated. "We encourage this gesture knowing that the needs of the students are being fulfilled by money which they themselves have gathered." This news and picture are by courtesy of Marvin Glassmann, Corresponding Secretary.



## DONATE TV SETS TO DORMITORIES

When it's TV time in the dormitories of the University of Chattanooga, credit goes to members of Zeta Eta Chapter of Alpha Phi Omega, who presented to each dorm a 21-inch console set as a special Christmas gift.

It was a moment to remember on the night of the annual Christmas party at Pfeiffer Hall, women's dorm, when seven members of the local chapter walked in carrying the set. The gift, which had been a closely guarded secret while preparations were being completed, was received with screams of joy, which were music to the ears of the boys.

The top picture at right gives indication of the jubilation of the girls as the television was brought into their dormitory. The lower picture shows some of the chapter members putting the set in place.

Following the presentation at Pfeiffer, the girls and members of APO went caroling to the men's dorm where an announcement was made that Alpha Phi Omega had ordered a similar set for them. From there, the group, joined by the boys from the dorm, serenaded the home of Dr. David Lockmiller, University President, and then returned to Pfeiffer Hall for hot chocolate and cookies served by the Dormitory Mother and the girls.

Money to purchase the sets came primarily as a result of two projects, an extensive ushering program and operation of the Used Book Exchange. The ushering program consists of supplying men to supervise Boy Scouts who usher for the UC home football games. For this service the chapter receives funds to be used in continuing their service program. Operation of the Used Book Exchange is a project with which many chapters of APO are familiar. This news and the pictures are by courtesy of Ronnie Saylor, Vice-President of Zeta Eta Chapter.

## Selling Sandwiches

XI CHAPTER at *Iowa State College* sells sandwiches in Beardshear Hall, a centrally-located classroom building. "We set up shop on the ground floor. The best time for business is during the afternoon, after 2 p.m. However, if we don't happen to sell them all during the day, we usually go through the men's dorm or to the fraternity houses. It depends upon who is in charge of distribution for that day. There is no problem in selling them to fellows during the evening. We sell them for 20c. Fellows usually get together the night before and make up the sandwiches in the kitchen of some fraternity house," reports Roger A. Winslow, Historian.

## Proceeds from Contest

The proceeds from ALPHA PI CHAPTER's Ugly Man Contest at *University of Miami* go to the Paul Yarch Memorial Fund. This is reported in the *Miami Hurricane*.



## Hi-Fi Records

One of the projects of DELTA CHAPTER at *Alabama Polytechnic Institute* is the purchase of Hi-Fi records for the Student Union. Last year the chapter purchased a \$500.00 Hi-Fi set for the Union. Other recent projects include placing concrete benches on the campus, providing staffs and pennants for the stadium, a permanent voting booth at the main gate, pencil sharpeners for the buildings on campus, storage and workshop facilities for the Student Union, donation for Hungarian refugee scholarship and drive for books for Korea. This year's Ugly Man Contest netted over \$1,100.00, and the book exchange set a new record this Spring quarter by selling over \$2,400.00 worth of books in one week. This and other news of the chapter was received from David H. Arnold.

## Coronation

In the Lantana Coronation, which is the main Spring social event at *Texas College of Arts and Industries*, DELTA CHI CHAPTER assisted in the building of floats, served as parade marshals and handled sales of cokes during the dance. The chapter has also recently completed a very successful Ugly Man Contest, with fine publicity in the school newspaper and the county newspaper. This is reported by Dean J. E. Turner, Presidential Representative.

## Career Day

GAMMA ETA CHAPTER did an admirable job of assisting in many different ways with the Boy Scout Career Day held recently on the Campus of *Springfield College*. This is reported by Martin L. Hunter, Presidential Representative.



## A TRADITIONAL "LINE OF DIMES"



Braving near-zero weather, cheerleader Susan Teschner adds her contribution to Southern Illinois University's "Line of Dimes." For the tenth year, Zeta Nu Chapter of Alpha Phi Omega conducted the project for the nationwide March of Dimes campaign in January. The goal was to receive enough student and faculty dimes to fill the half-block distance from the campus main gate to the Old Main building. Others in the picture are George Paskaski, right, and in the rear David Voice and Carolyn Sue Dodillet. This news and picture are by courtesy of the SIU Information Service.

### Toy Dance

One of the biggest dances of the year at the *University of New Mexico* is DELTA TAU CHAPTER'S toy dance. The toys which are collected are given to underprivileged children. This is just one of many projects, as reported by James M. Mullins, Past President. Others will be reported in later issues of TORCH AND TREFOIL.

### Donation to Orphanage

LAMBDA PI CHAPTER at *La Salle College* had a very successful Ugly Man Contest and dance, and the proceeds have been given to the St. Vincent's Orphanage of Philadelphia. This is reported by Albert J. Dorley, Jr., Treasurer.

## Campus Editorial

### IT HAPPENS EVERY SPRING

On several occasions this past week I have been just about to take convenient short cuts across barren grassless paths only to be confronted by clever little signs warning me away.

Seniors must be prompted to say, "Oh, these signs again," for they make their appearance each spring under the joint sponsorship of the landscape division and Alpha Phi Omega, national service fraternity.

We never cease marvelling at the obstinance of these groups (especially APhiO who has only tradition to keep them in there pitching) in trying to preserve the few green spots remaining on campus.

As we all can see, there are more and more sidewalks (not to speak of buildings) being built all the time. The green patches are shrinking rapidly.

With the past results of the "keep-off-the-grass" campaigns in mind, we are urging students to please confine their wanderings to the asphalt.

We are lucky enough to have one of the nicest looking campuses in the country. We want it to stay that way (natchterly). If the more popular short cuts must be made into sidewalks every year, we will soon have a confusing network of walks resembling some kind of hideous puzzle.

Another thing we admire is how they manage to come up with such original sayings on these signs each year (don't they ever get discouraged?). They could erect barbed wire barricades, you know. It may not be as subtle, but you can't beat it for effectiveness.

Let's make Alpha Phi Omega and the landscape division stop short of such measures. And KEEP OFF THE COTTONPICKIN' SOD!

—The Editor.

The above editorial from *The Daily Collegian* of Pennsylvania State University is a fine tribute to one of the projects of Alpha Beta Chapter.

### PRESENTING HONORARY MEMBERSHIP

At the induction dinner of the Carlos P. Romulo pledge class of Lambda Theta Chapter at Columbia College, an honorary membership was conferred upon Dean Nicholas McKnight. He thus became the first honorary member of the chapter. The above picture shows Ron Kushner, Chapter President, placing a button on Dean McKnight's lapel. The Dean then told the chapter of some of his many experiences in Scouting. He was a Scout in one of the first troops in New Jersey, becoming a member in 1911.

"Although Dean McKnight had no sons, there are countless boys upon whom he showered parental care." This was the way one faculty member summed up the long and fruitful career of the Dean of Students who will retire this June after forty years' association with Columbia College.





## SECOND ANNUAL SONGFEST

DELTA OMEGA CHAPTER at the *University of Houston* recently presented its second annual Songfest. The first Songfest, held last year, marked the birth of a lasting tradition. The enthusiastic participation and the warm reception of this event assured fond memories and led to the preparation of the second Songfest.

The committee in charge was under the direction of Kenneth Evans as Master of Ceremonies. Songfest co-chairmen were David McMillin and John Ledbetter. Trophies were arranged by Tom Spiva. Ushering was in charge of Phil Coleman and programs were the responsibility of Bert Young. Recording, decorations and arrangements were in charge of the Fall pledge class of the chapter.

An excellent panel of judges was assembled, including Dr. Merrills Lewis, Chairman of the Department of Music of the University of Houston; John Campbell, Professor of Music, University of Houston; Jack Ossewarde, Organist and Choir Master of Christ Church Cathedral; Edward Acton, Organist and Choir Director of St. Luke's Methodist Church, and Rev. Arthur Knapp, Rector, Trinity Episcopal Church and former member of the Robert Shaw Collegiate Choral.

The program presented is shown in the next column.

### PART I

- Alpha Chi Omega.....Kay Healey  
*Sing, Medley on Stars*  
Sigma Alpha Epsilon.....Doug Baer  
*Sigma Alpha Epsilon Medley, Hail to the Purple and Violet*  
Alpha Delta Pi.....Donna Reidy  
*I Love the Pin*  
Alpha Phi.....Ann Arthur  
*Alpha Phi Chant, Medley on Bells*  
Phi Kappa.....Jerry Lirrette  
*The Temple, Medley: Serenade in Holland, Let Me Call You Sweetheart, Whispering, An Old Dutch Garden*  
Delta Zeta.....Wilma Hartman  
*Four Wonderful Years, Medley of Songs from South Pacific*

### PART II

- Zeta Tau Alpha.....Charlotte Kuenstler  
*Hymn to Zeta, A Christmas Story*  
Lambda Chi Alpha.....Cecil Hutson  
*Lambda Chi Brotherhood Song, Medley on Dreams*  
Delta Gamma.....Sharon Rogers  
*When You Go Away to College, Medley on Love*  
Sigma Chi.....Roy Phillips  
*My Name Is Sigma Chi, Sir; Medley to Beautiful Women*  
Phi Mu.....Iris Altrogge  
*To a Phi Mu Sweetheart, Old South Medley*  
Pi Kappa Alpha.....Russell Orr  
*Diova, You'll Never Walk Alone*  
Chi Omega.....Sue Goodere  
*Panhellenic Toast, 'Twas the Night Before Christmas*

## Visit by National Scout Official

At a recent meeting of LAMBDA PSI CHAPTER at *Colorado State College*, Mr. George K. Myers, Director of National and International Civic Relations for the Boy Scouts of America, visited the chapter and gave a fine address to the group. He told about the tremendous increase in membership in the Boy Scouts of America in the past several years, and also emphasized the need for additional volunteer and professional Scouters. He stressed the fact that despite the sponsorship of such organizations as American Legion, Veterans of Foreign Wars, Amvets, churches and other groups, there are still many boys who should be in Scouting who are not, due to lack of leadership, and urged the chapter members to continue their interest in Scouting throughout the years ahead. This is reported by John R. Miller.

## Tribute in UCLA Paper

Quoted from the "Daily Bruin" is the following tribute to CHI CHAPTER:

"Here's to Alpha Phi Omega." In a circle of friendship, the brothers of APO close every meeting with their toast song. Dependability is the key word of this service group, and their reputation is more firmly established with every project they undertake. Some of the chapter activities include supervision of the Homecoming parade and the Ugly Man Contest.

"If you want something done well, get APO to do it," is the testimony that comes from many groups which have called upon APO for service, including Spring Sing and the Elections Board. Although Alpha Phi Omega is a service group and not an honorary, with a tradition for a job well done, membership is an honor."

The above item from the college newspaper was received by courtesy of Chuck Linsey, Past President of Chi Chapter.

## WHICH WAY ARE YOU GOING?

Sophomore Pat Crawford, left, and senior Carol Ross, will tell you that regardless of which way you are headed, this many-arrowed sign will point out the right direction for you. Located on the campus of the University of Miami, the "guide post" is the work of Alpha Pi Chapter of APO. The picture was published on the front page of the *Miami Hurricane* and was received by courtesy of Robert Lessne, Corresponding Secretary.





# SECTIONAL CONFERENCES

"Very enjoyable and valuable." That statement sums up many comments received about the Sectional Conferences held in Alpha Phi Omega in the past few months. The opportunity to get together with members from other chapters offers a splendid means of discussing projects and the know-how of chapter operation.

## Middle States Sectional Conference

Twelve chapters were represented at the Middle States Conference held at Kent State University, Kent, Ohio, March 30 and 31, 1957. The section comprises Ohio, Kentucky, and West Virginia. Serving as Conference Chairman was Brother Robert J. Hilliard of Epsilon Psi Chapter. Under his leadership the program was superbly planned and conducted.

The keynote address at the conference was by Dr. Glen T. Nygreen, Dean of Men of Kent State University, who serves as a Presidential Representative of AΦΩ. His wonderful message put the conference into high gear for the two-day meeting.

The conference banquet honored all presidents who were in attendance (see pictures below). The principal address of the banquet was on "Leadership" by M. R. Disborough, Na-

tional President. He emphasized the opportunities for increased growth and service in Alpha Phi Omega and challenged the delegates to build a stronger program in every chapter.

On the noon luncheon program at the closing session of the conference, Frank W. Braden, Scout Executive of the Greater Cleveland Council, spoke on "A Scouting Advisor Looks at Alpha Phi Omega"; Professor Weaver M. Marr, Chairman of the Advisory Committee of Lambda Tau Chapter at Salem College, spoke on "A Faculty Advisor Looks at Alpha Phi Omega," and Leland C. Keller, District Governor of Rotary International, addressed the group on "The Call to Service." Each speaker gave a fine presentation which added to the values of this conference for everyone in attendance.

## Southwest Sectional Conference

At Baylor University, Waco, Texas, the Southwest Sectional Conference was held March 23 and 24, 1957. Under the fine chairmanship of Don Williamson of Zeta Omega Chapter, the host group planned and conducted this meeting in an excellent manner. Eleven chapters were represented from the states of Texas, Oklahoma and

New Mexico.

The keynote address at the Southwest Conference was by our National President, M. R. Disborough, in which he gave the meeting an excellent send-off.

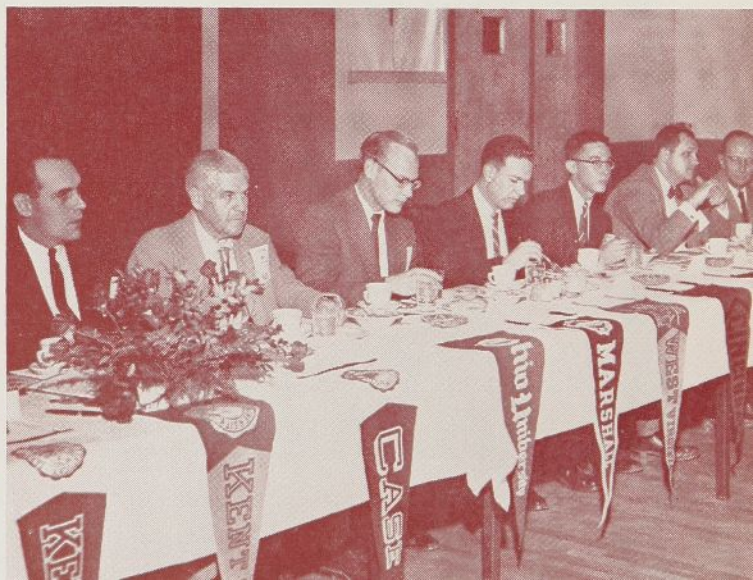
Addressing the conference banquet was Dean Arno Nowotny, Past National President. He gave the group a tremendous challenge to serve faithfully and work for the advancement of Alpha Phi Omega.

At the final session of the conference, Dean Lewis N. Jones of the National Executive Board expressed his appreciation for the opportunity to work with such an outstanding group of young men who compose the membership of AΦΩ chapters in this section, and the final address was given by Dr. Leonard A. Duce, Dean of Baylor University. Dean Duce enthusiastically emphasized the needs and opportunities for leadership, friendship and service in the world today.

## Pacific Coast Sectional Conference

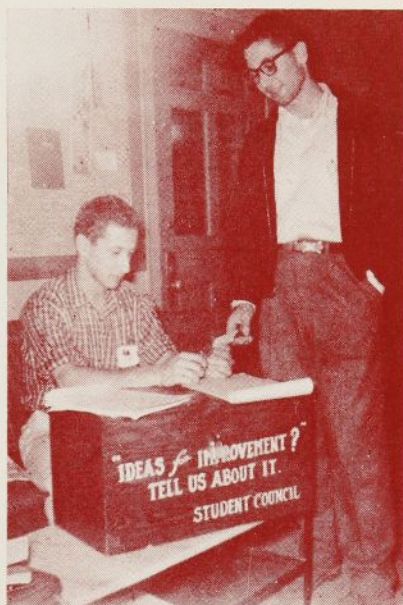
With Chi Chapter of UCLA as host, the Pacific Coast Sectional Conference was held April 13 and 14 at Santa Monica, California. Thirteen chapters were represented and the program was very ably handled by Brother

Shown in the two pictures below are those at the speaker's table at the banquet of Middle States Sectional Conference, March 30, 1957, honoring all chapter presidents in attendance. Left to right are Duane C. Neiner, President of Delta Gamma Chapter, Ohio University; Charles S. Freed, President of Zeta Lambda Chapter, University of Toledo; Otto Reynolds, Jr., President of Delta Theta Chapter, University of Louisville; Walter Riggs, President of Alpha Zeta Chapter, University of Kentucky; Dr. Glenn R. Barr, Member of National Executive Board; M. R. Disborough, National President; Robert J. Hilliard, Member of National Executive Board; Professor Kent D. Shaffer, Member of National Executive Board; Ronald D. Hill, President of Alpha Iota Chapter, Ohio State University; Ronald H. Potts, President of Iota Delta Chapter, Hiram College; Richard L. Hartman, President of Kappa Chapter, Carnegie Institute of Technology; Hawley Dieringer, Scouting Advisor of Iota Delta Chapter, Hiram College; and Sidney B. North, National Executive Secretary. These pictures and also the cover picture are by courtesy of David W. Jones of Epsilon Psi Chapter, Kent State University.





## ELECTION SERVICE



Members and pledges of Delta Kappa Chapter were in charge of the campus election held recently at Emory University. In the picture above, Howard Schneider, Second Vice-President, is shown clipping the voting privilege card of Louis Milander and receiving his ballot at the poll. This news and picture are by courtesy of Harold Koslow.

Al Krotoski, who served as Chairman. The President of Chi Chapter, Bob Dougherty, served as Assistant Chairman.

Speakers at the conference banquet were Robert H. Hayes, Scout Executive, Verdugo Hills Council, and Sidney B. North, National Executive Secretary of AΦΩ. They stressed the opportunities for increased service on the campus and in the community and pointed out the responsibility of every member and every chapter to help build Alpha Phi Omega to greater heights than ever before.

## Metropolitan Sectional Conference

Last November 24 and 25, the Metropolitan Sectional Conference was held at Cornell University, Ithaca, New York. Chapter delegates participated in a fine two-day program discussing activities and problems. Representing the National Fraternity at this meeting were M. R. Disborough, National President, and Dr. Henry Miller, member of the National Executive Board.

## Chapter Reports

At each of the conferences a delegate from each chapter represented was called upon to report concerning

service projects. These descriptions of projects brought forth information as to a wide variety of services conducted by chapters and furnished many ideas for use by other chapters. The reports showed that the service program of AΦΩ is increasing year after year and that our organization is doing more and more to live up to its purposes.

## Additional Conferences

In coming months there will be nine more sectional conferences to round out our total of thirteen conferences in this biennium, giving opportunity for chapters in every section to attend a meeting of this kind. Watch for the announcement and details of the conference in your section.

## ANOTHER MILE

(Continued from page 3)

"I will go on," said Frans. And he did not know why he said it. "It has not seemed far. I am not tired."

The Russian stared at him in surprise, and for the first time Frans really looked into his face. He saw that the soldier was very young. He saw, too, that he was very, very tired, in spite of the straight, soldierly way in which he stood.

"You have come a long way," said Frans.

"Yes," replied the soldier, "A weary way of many miles."

"Have you far to go?"

"I go to Leningrad."

"So far!" said Frans. "Then let me carry your pack another mile. There is no one here to take it. Another mile will be nothing."

"You are very kind," said the soldier, and his face was still full of surprise.

So they went on, only now the Russian waited for Frans and walked beside him along the road. And, suddenly Frans found himself talking to the soldier about his home and family. He listened while the soldier talked of his travels in far places. They were so busy talking that the distance seemed short.

"Tell me," said the soldier at last, "How did it happen that you offered to come this second mile?"

Frans hesitated.

"I hardly know," he said. "It must have been something that a teacher once said, I think."

Then he told the soldier all that had happened out on a hill a long, long time ago, and all that he could remember of the teacher's words.

"Strange!" said the soldier thought-

fully. "Love your enemies! That's a hard teaching." He would that he could know more of this man.

They had come to the top of the hill and to the end of the second mile. Frans looked back along the road toward his home.

"I must return," he said.

The soldier took the pack and shouldered it. Then they clasped hands.

"Goodbye, friend," said the soldier.

"Goodbye, friend," answered Frans, smiling up into the soldier's eyes.

As Frans strode back along the road the words of the teacher kept running through his mind: "Whosoever shall compel thee to go one mile, go with him two." And as he repeated the words he found himself adding, "It works!" There's something in it: that he had walked one mile behind the enemy—and he walked another mile and found a friend.

## Do You Wear an Alpha Phi Omega Pin or Key?



If you have not yet purchased a pin or key, get one as soon as convenient. You will enjoy wearing APO insignia. Above is pictured the standard pearl center key which costs \$16.25, plus ten per cent federal tax and any state and city tax which applies in your locality. Other qualities of pins and keys are priced from \$2.75 to \$28.00.

An illustrated list is available upon request to our National Office. Also, if your chapter treasurer does not have Balfour order blanks on hand, a supply can be obtained by writing to our office.



# How About Summer Promotion?

## HERE ARE WAYS YOU CAN HELP BUILD ALPHA PHI OMEGA DURING THE SUMMER MONTHS

*On the campus*, if enough members are enrolled for the Summer term, it is appropriate to continue at least a limited program. Colleges which are on the cooperative system particularly have opportunity to proceed with AΦΩ projects during the Summer months.

*In your home town*, aid Scouting in every way you can this Summer. Give a boost to a Troop or Pack or help in Explorer activities. "Talk up" Alpha Phi Omega among fellows who are or have been in Scouting and are planning to enter college in the Fall. A good place to contact prospective pledges is at the Scout Camp—talk to staff members who have graduated from high school and are ready for college. For fellows who are planning to attend a college other than yours, send their names and addresses and the name of the school they will attend to our National Office for referral to other chapters.

*By correspondence* keep in touch with the other officers and advisors of your chapter to coordinate plans for the new year. Also, write to brothers in the armed forces to keep them informed about Alpha Phi Omega.

*By wearing your recognition button and pin*, let others know you are affiliated with Alpha Phi Omega.

*And above all*, live by the principles of Alpha Phi Omega and set an example for others by exemplifying our program of Leadership, Friendship and Service.

## BULLETIN BOARD

### INTERCHAPTER VISITS

Spring activities offer fine opportunities to invite neighboring chapters to send representatives to one of your special occasions, initiation, banquet, or other event. Interchapter visits are interesting and helpful.

The Directory of Chapter Presidents issued in February is still useful for writing to neighboring chapters. We recommend using the president's name and address for correspondence rather than just addressing a letter to a chapter name.

The opportunity for interchapter fellowship will benefit both the hosts and the guests. Try it!

### YOUR EXECUTIVE COMMITTEE

Does your chapter make effective use of its Executive Committee? This committee, made up of the Chapter Officers, Chairman of the Advisory Committee and the Scout Executive, has a real responsibility to coordinate chapter functions, outline the chapter calendar in advance, advise with the operating committees concerning their responsibilities, analyze any problems and plan their solution, and set up the chapter budget.

Planning by your Executive Committee can be of real value.