

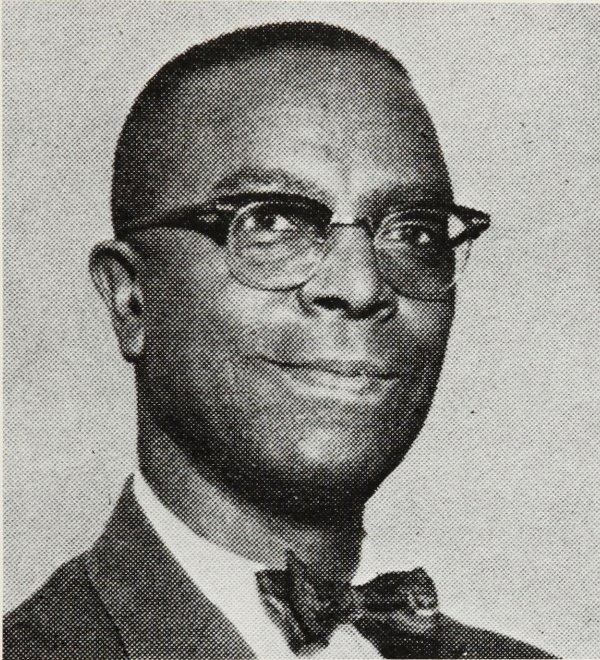


# torch *and* trefoil



FALL, 1976

## THE LUCIUS E. YOUNG PLEDGE CLASS



The Fall 1976 Pledge Class is dedicated to one of the outstanding leaders of Alpha Phi Omega — a man who has given freely of his time, energy and personal finances to build and strengthen Alpha Phi Omega across the nation. Lucius E. Young, LTC., Ret., was a co-founder of Zeta Phi Chapter at Howard University in Washington, D.C. in 1948.

Colonel Young is a native of Florida. He received his B.A. Degree from Howard in 1933. Upon graduating from Howard he was commissioned as a 2nd Lieutenant in the Infantry Reserve. He entered the Scouting profession in 1937 as a Field Scout Executive for the National Capital Area Council. He was among the first three Negroes to graduate from the National Training School for Scout Executives at Mendham, New Jersey.

In 1941, he entered active military duty and served in North Africa and Italy during World War II. After the war he returned to Howard as Assistant Professor of Military Science. In 1948, he was initiated as Advisory Chairman of Zeta Phi Chapter.

He retired from active military service in 1961 and was employed with the U.S. Army Materiel Command in Washington, D.C. until 1975. He received numerous decorations as an Army officer, and remains active in the Retired Officers Association.

Colonel Young also received a M.A. Degree in Sociology from Howard and a Law Degree from American University. He was an Instructor of Sociology and Business Law for the University of Maryland Far East Division in Korea.

He has long been involved in Alpha Phi Omega alumni activities, serving as Executive Vice President of the National Alumni Association. In 1966 he was elected to the National Board of Directors and served as the National Alumni Chairman from 1966-1970. The 1970 National Convention elected him to the Vice Presidency of the Fraternity.

On March 11, 1972, Colonel Young was named National President upon the death of President Aubrey B. Hamilton. He was elected National President by the 1972 Convention, and served in that capacity until the 1974 Convention.

During his term of office, Colonel Young traveled far and wide for Alpha Phi Omega and met with Brothers in all parts of the nation. He installed a new chapter in Puerto Rico, and was untiring in his devotion to the growth and expansion of the Fraternity. For outstanding service to Alpha Phi Omega he was awarded the National Distinguished Service Key at the 1974 National Convention. The National Capital Area Council recognized his service to Scouting with the Silver Beaver Award.

In addition to his Alpha Phi Omega activities, Colonel Young is a Life Member of Phi Beta Sigma Social Fraternity, District Governor of Toastmasters International, Past President of the Union of Holy Name Societies, Archdiocese of Washington, D.C., and a member of the Cardinal's Committee of the Laity, Archdiocese of Washington, D.C.

Colonel Young and his lovely wife Maude currently reside in Washington, D.C. The Fall 1976 Pledge class can take great pride in the outstanding Brother to whom it is dedicated.



# torch and trefoil

**Alpha Phi Omega  
National Service Fraternity**

**Volume 52, No. 1  
Fall, 1976**

## **National Officers**

Lawrence L. Hirsch, M.D.  
Chicago, Illinois  
*National President*

Lorin A. Jurvis  
Washington, D.C.  
*National Vice President*

## **Executive Committeemen**

Ed M. Andrews ..... Martinsville, Ind.  
Dr. John E. Hanke ..... Cheney, Wash.  
Sid Smith ..... San Carlos, Calif.  
Warren C. Weidman ..... Reading, Penn.  
C. P. Zlatkovich ..... Austin, Tex.

## **Regional Representatives**

I. Lewis Finkel ..... New York, N.Y.  
II. Joseph P. Morrone, Jr. .... Philadelphia, Penn.  
III. Robert J. Harris ..... Raleigh, N.C.  
IV. Dr. R. L. Brittain ..... Martin, Tenn.  
V. William B. Rugh ..... Toledo, Ohio  
VI. Berkeley P. Duncan ..... Ann Arbor, Mich.  
VII. Abe Frishman ..... Garland, Tex.  
VIII. Darrell Spoon ..... Wellington, Kan.  
IX. Michael W. Suhr ..... Minneapolis, Minn.  
X. Earle M. Herbert ..... Los Angeles, Calif.

## **National Legal Counsel**

Alex M. Lewandowski ..... Kansas City, Mo.

## **National Executive Director**

Roger A. Sherwood ..... Kansas City, Mo.

TORCH AND TREFOIL is issued regularly four times a year, September, November, February and April, from Office of Publication, 1100 Waltower Building, 823 Walnut Street, Kansas City, Missouri 64106. Printed by Rosse Lithographing Company, Printers and Lithographers, Kansas City, Missouri. Second Class Postage paid at Kansas City, Missouri. Subscription price \$1.50 per year.

## **CONTENTS**

The Lucius E. Young Pledge Class .....	1
Editorial .....	2
Service: The Spirit of '76 .....	3
Serve More Students '76 Honorees .....	4
National Board of Directors Meets .....	5
Californians Build Alpha Phi Omega in Arizona .....	5
Installations .....	6
Brothers on the Move .....	6
Fall Conference Schedule .....	6
Action .....	7
Convention Facts .....	8

## **EDITORIAL**

In less than ninety days there will occur an opportunity for every Alpha Phi Omega member to share in a fantastic experience in the Brotherhood inherent in this Fraternity. The 24th National Convention of Alpha Phi Omega, which will take place in Atlanta, Georgia on December 27-29, 1976, will carry the theme of "Service: The Spirit of '76."

How appropriate it seems that, as we close our nation's Bicentennial year, we celebrate the Spirit of Service which has made this country great. Our forefathers, in risking life and fortune to mold a young nation, exemplified the very type of commitment to their fellow man that Alpha Phi Omega evidences today. We cannot help but feel a kinship with those who made it possible for us to enjoy the freedom to serve others.

The 24th National Convention will be an historic event in the Fraternity's history. We must come to grips with the problems facing us because of Title IX of the Higher Education Act. We must chart a course of action which will continue to make Alpha Phi Omega a viable force on the nation's campuses. And, most of all, we must act in the best interests of the total Fraternity, and not just in our own special interests.

With each of us trying to do what is best for Alpha Phi Omega, we can and will insure that the opportunities to enjoy the same kinds of experiences we have had will be available to those who follow.



# ***SERVICE: THE SPIRIT OF '76***

At 10:00 A.M. on Monday, December 27, 1976 Everett Cordy, Convention Chairman, will open Alpha Phi Omega's 24th National Convention. More than 1000 chapter representatives, delegates, alumni and friends are expected to join in the three day meeting, to be held at the Atlanta Marriott Motor Hotel in Atlanta, Georgia.

For early arrivals, registration will begin at 4:00 P.M. on Sunday, December 26th. At 8:00 P.M. on the 26th the National Board of Directors will meet. This session will be open to observers.

At the opening session on the 27th, the National President, Dr. Lawrence L. Hirsch, will issue a challenge to the attendees. Lorin A. Jurvis, National Vice President will speak on Women in the Fraternity and Title IX, and Roger A. Sherwood, National Executive Director, will deliver a message on the State of the Fraternity. Reports will be received from the National Executive Committeemen. The Convention Committee Members, National Board of Directors and distinguished guests will be introduced. Delegates will adopt Convention Rules and Order of Business. Following the opening session a special luncheon will be hosted by the National Board of Directors to honor and recognize Chapter Advisors and Sectional Chairmen and Sectional Staff Members for their efforts in behalf of the Fraternity.

Monday afternoon has been reserved for Reference Committee sessions. At these sessions every member in attendance will have the opportunity to speak to the issues which will come before the legislative session. At the same time, the Leadership Development Committee will offer a series of development seminars designed to address the needs of chapters and chapter officers. Alumni in attendance will have the opportunity to participate in a session conducted by the National Alumni Committee.

The busiest students at the Convention will be those serving on the Reference Committees, which will hear testimony from members of the Fraternity in a variety of subject areas. These include Leadership, Friendship, Service, Alumni, Finance, Women in the Fraternity, Fraternity Structure, Miscellaneous Legislation, Nominating, Time and Place, Credentials, Publications and Appreciations. Voting delegates interested in serving on these Reference Committees should indicate their preferences when submitting their registration to the National Office. All of them will include delegates from each of the 10 Regions.

On Monday evening a "Meet Your Board" reception is scheduled for 6:00 P.M. Immediately following will be the Chapter Awards Banquet. Dr. William Cornette, Advisor to Beta Sigma Chapter, Texas Tech University, will offer an advisor's view of the Fraternity. After the chapter roll call, the H. Roe Bartle Chapter Awards will be presented and outstanding chapters will be recognized.

Tuesday morning, December 28th, the Reference Committees will continue their deliberations. Development seminars will continue, and the National Alumni Committee will again conduct a session for alumni.

At 1:30 P.M. Tuesday, the legislative session of the National Convention will be called to order. The first items of business will be those related to the operation of the Convention. Following this the delegates will consider the reports of the Reference Committees. This session will recess at 6:00 P.M. and reconvene at 8:00 P.M., if necessary, and continue until all legislation is completed.

At 10:00 A.M. on Wednesday, December 29th, the Nominating Committee will present its report and the National President, National Vice President and five National Executive Committeemen will be elected. The Time and Place Committee will report and the delegates will select the site and time of the 1978 National Convention. Reports from the Appreciations Committee and other Committees will be received and acted upon.

Wednesday afternoon the general session will continue until all Committees have reported. At 3:30 P.M. each of the 10 Regions will hold a Regional Meeting. Regions II, IV, VI, VIII and X will each elect a Regional Representative to the National Board of Directors.

The Honors Banquet, to be held Wednesday evening, will close the Convention. It will feature a distinguished speaker. The National Distinguished Service Awards, the Fraternity's highest honor for exemplary service to the Fraternity, will be conferred upon deserving Brothers.

The success of an Alpha Phi Omega Convention depends upon maximum chapter participation. Each chapter is entitled to send two voting delegates. Every pledge, member, advisor, and alumnus is invited to attend and participate in this unique experience in Brotherhood.

See you in Atlanta December 27-29, 1976.



# SERVE MORE STUDENTS '76 HONOREES

The Fall, 1975 issue of *Torch and Trefoil* introduced a program designed to increase the size of Alpha Phi Omega Chapters. The SMS '76 Campaign challenged each chapter to maintain a membership of at least 20 active members and initiate at least 6 new active members during the school year.

We are proud to recognize the chapters who have achieved their SMS '76 goal. 33% of the chapters were able to meet the standards set by the National Extension Committee. Region VII (Texas and Louisiana) led the way, with 41% of the chapters

meeting the standards. In Section 40 (West Texas), 8 of the 9 chapters met the goal. Special congratulations are due to Dr. William Cornette, Sectional Chairman, on this outstanding achievement.

1975-76 marked the first year since 1968-69 that Alpha Phi Omega has initiated more members than the previous year. It looks as if our downward slide has been reversed, and that the Fraternity now has a broadened base from which to grow and prosper. We're confident that the future will be even brighter, and salute the SMS '76 Honorees.

## REGION I

Alpha Chi  
Delta Rho  
Delta Sigma  
Epsilon Delta  
Pi Rho  
Sigma Xi  
Upsilon Mu  
Phi Epsilon  
Psi Delta

MIT  
Rutgers University  
University of Connecticut  
Central Connecticut State College  
Rider College  
University of Maine at Orono  
University of Puerto Rico-Mayaguez  
Maine Maritime Academy  
University of Maine at Machias

## REGION II

Alpha  
Gamma  
Phi  
Epsilon Zeta  
Zeta Theta  
Eta Mu  
Lambda Lambda  
Lambda Upsilon  
Nu Lambda  
Xi Alpha  
Xi Zeta  
Xi Lambda  
Sigma Eta

Lafayette College  
Cornell University  
Syracuse University  
Rensselaer Polytechnic Institute  
Drexel University  
Utica College  
Shippensburg State College  
Ursinus College  
Moravian College  
Muhlenberg College  
Rochester Institute of Technology  
Bloomsburg State College  
Villanova University

## REGION III

Theta  
Rho  
Zeta Beta  
Iota Lambda  
Kappa Theta  
Mu Alpha  
Mu Xi  
Nu Kappa  
Tau Sigma  
Tau Phi  
Upsilon Tau  
Phi Kappa  
Phi Lambda  
Psi Tau

University of Virginia  
University of North Carolina  
Virginia Polytechnic Institute & State University  
North Carolina State University  
Wake Forest University  
Georgetown University  
High Point College  
Campbell College  
Brandywine College  
Wingate College  
Shendandoah College-Conservatory of Music  
University of North Carolina-Greensboro  
Northern Virginia Community College  
Virginia State College

## REGION IV

Delta  
Tau  
Beta Zeta  
Gamma Lambda  
Gamma Chi  
Delta Iota  
Epsilon Iota  
Iota Mu  
Kappa Eta  
Pi Epsilon  
Pi Iota  
Rho Epsilon  
Tau Mu  
Tau Upsilon  
Upsilon Rho  
Upsilon Chi  
Chi Zeta  
Psi Kappa  
Psi Phi

Auburn University  
University of Florida  
University of Georgia  
Clemson University  
Samford University  
Mercer University  
Mississippi State University  
University of South Carolina  
University of Southern Mississippi  
Alabama A & M University  
Wofford College  
Savannah State College  
University of South Florida  
Tennessee Technological University  
Baptist College at Charleston  
Clark College  
University of Tennessee-Martin  
Chattanooga State Technical Community College  
Tennessee State University

## REGION V

Beta  
Zeta Delta  
Zeta Kappa  
Iota Xi  
Lambda Omicron

University of Pittsburgh  
Miami University  
Bowling Green State University  
Edinboro State College  
West Virginia University

Lambda Tau  
Mu Tau  
Xi Psi  
Pi Chi  
Rho Theta

Salem College  
West Virginia Institute of Technology  
Western Kentucky University  
Duquesne University  
Capital University

## REGION VI

Eta  
Alpha Alpha  
Alpha Gamma  
Beta Beta  
Epsilon Lambda  
Zeta Alpha  
Zeta Gamma  
Zeta Nu  
Eta Sigma  
Theta Xi  
Mu Nu  
Pi Eta  
Sigma Phi  
Tau Omicron

Northern Illinois University  
University of Illinois  
Purdue University  
Michigan State University  
Michigan Technological University  
Bradley University  
Valparaiso University  
Southern Illinois University-Carbondale  
Illinois College  
Parks College  
Western Illinois University  
Loyola University  
University of Notre Dame  
Indiana U-Purdue U-Indianapolis

## REGION VII

Alpha Rho  
Beta Delta  
Beta Sigma  
Delta Omega  
Eta Tau  
Eta Chi  
Theta Rho  
Theta Tau  
Lambda Xi  
Nu Zeta  
Nu Sigma  
Xi Delta  
Xi Omicron  
Omicron Delta  
Omicron Omega  
Sigma Omicron  
Sigma Pi  
Tau Theta  
Phi Upsilon

University of Texas  
East Texas State University  
Texas Tech University  
University of Houston  
West Texas State University  
Hardin-Simmons University  
Sam Houston State University  
University of Texas-Arlington  
Pan American University  
Abilene Christian College  
Stephen F. Austin State University  
Texas A & M University  
Tarleton State University  
McMurry College  
East Texas Baptist College  
Howard Payne College  
Prairie View A & M University  
Wayland Baptist College  
Amarillo College

## REGION VIII

Epsilon  
Pi  
Beta Kappa  
Beta Mu  
Beta Omicron  
Beta Psi  
Epsilon Epsilon  
Zeta Tau  
Theta Eta  
Pi Pi

Northeast Missouri State University  
Kansas State University  
Central Missouri State University  
Southwest Missouri State University  
University of Missouri-Rolla  
Southeast Missouri State University  
Missouri Valley College  
Central Methodist College  
Kansas City College of Osteopathic Medicine  
College of the Ozarks

## REGION IX

Eta Lambda  
Iota Tau  
Lambda Kappa  
Mu Theta  
Mu Mu  
Pi Beta  
Sigma Theta  
Tau Upsilon

University of Wisconsin-Eau Claire  
St. Olaf College  
Loras College  
Luther College  
University of Minnesota-Duluth  
University of Dubuque  
St. Mary's College  
University of Wisconsin-Platteville

## REGION X

Alpha Delta  
Gamma Beta  
Gamma Nu

San Diego State University  
San Jose State University  
University of Idaho



# NATIONAL BOARD OF DIRECTORS MEETS

**The National Board of Directors met at the Atlanta Marriott Hotel in Atlanta, Georgia, site of the 1976 National Convention, on July 10, 1976. Present were:**

Lawrence L. Hirsch, M.D.	Dr. R. L. Brittain
Lorin A. Jurvis	William B. Rugh
Ed M. Andrews	Berkeley P. Duncan
Sid Smith	Abe Frishman
Warren C. Weidman	Darrell Spoon
C.P. Zlatkovich	Michael W. Suhr
Lucius E. Young, LTC., Ret.	Earle M. Herbert
Roger A. Sherwood	George F. Cahill
Lewis Finkel	Dr. Tom T. Galt
Joseph Morrone	Sidney B. North
Robert J. Harris	Dr. Tom Haggai

## **The following actions were taken by the Board:**

- ★ Dedicated the Fall, 1976 Pledge Class to Past National President Lucius E. Young
- ★ Adopted, with two minor adjustments, the 1977 Operating Budget presented by the Finance Chairman, calling for income and expenditures of \$151,900.
- ★ Authorized the President and Vice President to investigate and implement an agreement of a custodial, trustee, agency or trust nature with a bank or trust company for the custody and management of Alpha Omega's Endowment Fund assets.
- ★ Adopted a policy of maintaining records for use by future Board members.
- ★ Established Rules and Order of Business to be recommended to the 1976 National Convention.
- ★ Adopted a Convention Budget calling for income and expenditures of \$30,250.
- ★ Encouraged the Headquarters Study Committee to continue its research on the possibility of securing a National Headquarters for the Fraternity.
- ★ Asked the Publications Committee to develop a new brochure as an alternative to "Everybody's Gotta Have a Gang."
- ★ Adopted Regional and National Membership Goals for 1977.
- ★ Took the following actions related to women in the Fraternity:

- (1) Directed the National Vice President to continue to pursue an administrative appeal to the ruling of Alpha Phi Omega's relation to Title IX by the Department of Health, Education and Welfare.
  - (2) Directed the National Vice President to continue to seek from appropriate members of Congress their support for legislation to exempt Alpha Phi Omega from Title IX.
  - (3) Specified that immediate and timely information on the foregoing be provided to chapters and Sectional and Regional personnel as soon as it is available.
  - (4) Voted to support the current membership policies of each chapter, and to seek agreement that no adverse action will be taken against any chapter by any school administration at least until the National Convention has the opportunity to consider amendments to the National By-Laws, or the favorable outcome of administrative appeals and/or legislative remedies.
  - (5) Endorsed and recommended to the Fraternity and delegates to the 1976 National Convention that the Articles of Incorporation, National By-Laws and Standard Chapter Articles of Association be amended to delete any reference to gender. (A roll call vote was called for and passed with fourteen ayes, six nays and two abstentions).
  - (6) Recommended that provisions for affiliate membership be eliminated and that a provision be enacted by the Convention which would permit affiliate members to register during a one year period after the Convention, as active members upon the payment of an additional fee of \$10.00 and participation in such additional ceremony as the local chapter may determine.
- ★ Approved the Convention Committee report.
  - ★ Received reports requiring no action from the National Executive Director, Service Committee, Alumni Committee, Leadership Development Committee, Awards Committee, and Field Representative Study Committee.

## CALIFORNIANS BUILD ALPHA PHI OMEGA IN ARIZONA

by Jeff Schwartz, Past President, Lambda Mu

Brothers from California spent a month this past summer in Arizona launching an Alpha Phi Omega Expansion Drive. They visited a number of campuses throughout Arizona, contacting administrators, alumni, and prospective members.

Petitioning groups will soon make themselves known at Northern Arizona University, Phoenix Community College, and for recharter of Eta Eta Chapter at Arizona State University. Contacts were made at other campuses, but news of their progress is not yet available.

Leaders of the expansion drive are: Russ Yost, past president of Chi Delta Chapter at Pepperdine University; Jeffrey Schwartz, past president of Lambda Mu Chapter at California State University at Los Angeles; Larry York, past president of Lambda Mu Chapter, past Section 1 Chairman, currently serving as Region X Special Projects and Extension Coordinator. Brother York had done much advance

work in preparation for the campaign. Working closely with them in Phoenix is Dave Yamamoto, past president of Theta Iota Chapter, University of Arizona.

Techniques used by the Brothers included display tables, distributing literature, contacting student governments, publicity in campus news media, visiting dorms, speaking at special meetings, and working with local Scout Councils.

Alumni contacted in Arizona seem enthusiastic about the prospect of new chapters and are ready to lend assistance. Brother Dave Yamamoto, residing in Phoenix, will work with the new group at Arizona State University and serve as a coordinator in Arizona.

Brothers Russ Yost and Jeff Schwartz have returned to California to continue serving the Fraternity with their new skills and experiences.



# INSTALLATIONS

## EPSILON TAU UNIVERSITY OF ALABAMA

Rejoining the ranks of active chapters on April 30, 1976 was Epsilon Tau Chapter at the University of Alabama, Tuscaloosa, Alabama. Roger A. Sherwood, National Executive Director, presented a duplicate of the original charter to Dr. Richard Thigpen, Acting Chief Executive Officer of the University. Gamma Chi Chapter, Samford University, assisted by Delta, Auburn University, performed the ritual for the 25 new initiates. The Chapter President is Patrick O'Neil and the Advisory Chairman is Dean Thomas F. Strong.

## OMEGA BETA AUGSBURG COLLEGE

Omega Beta Chapter of Alpha Phi Omega was chartered on the campus of Augsburg College in Minneapolis, Minnesota on May 2, 1976. National Executive Director Roger A. Sherwood, assisted by Region IX Representative Mike Suhr and Minnesota Sectional Chairman Robert Satterstrom presented the charter to Dr. Oscar A. Anderson, President of Augsburg. The charter group consisted of 20 active members. The ritual was presented by Brothers of Upsilon Upsilon Chapter, College of St. Thomas. Eric Trehus serves as Chapter President and Donald A. Christenson as Advisory Chairman.

## OMEGA DELTA FAIRFIELD UNIVERSITY

Omega Delta became the Fraternity's 580th chapter on April 30, 1976. Located at Fairfield University, Fairfield, Connecticut, Omega Delta was installed by Dr. Glen T. Nygreen, Past National President. He was assisted by Robert Smullin, New England Sectional Chairman. The ritual for the 26 active members was performed by Epsilon Delta, Central Connecticut State College. Installed as Chapter President and Advisory Chairman were William Sweetman and Rev. Joseph MacDonnell, S.J.

## OMEGA EPSILON ILLINOIS WESLEYAN UNIVERSITY

On April 30, 1976, Omega Epsilon Chapter was chartered at Illinois Wesleyan University, Bloomington, Illinois. Dr. Lawrence L. Hirsch, National President, assisted by Gary

Anderson, Northern Illinois Sectional Chairman, presented the charter to 20 active and 7 affiliate members. Theta Epsilon, Illinois State University, performed the ritual. Paul M. Turner was the Charter President and Glenn J. Switchenberg was the Advisory Chairman.

## OMEGA ZETA DURHAM COLLEGE

At an all-school assembly at Durham College in Durham, North Carolina on May 21, 1976, Robert J. Harris, Region III Representative, presented a charter to Omega Zeta Chapter. 27 members in the charter group were administered the ritual by Brothers from Tau Delta Chapter, North Carolina Central University. Melvin Williams serves as Chapter President and Roy C. Ellis as Advisory Chairman.

## OMEGA GAMMA ANGELO STATE UNIVERSITY

On Sunday, May 2, 1976, 28 active members and 3 affiliate members were installed as Omega Gamma Chapter of Alpha Phi Omega at Angelo State University in San Angelo, Texas. C. P. Zlatkovich, National Executive Committeeman, assisted by Abe Frishman, Region VII Representative, officiated at the chartering ceremony. Alpha Rho Chapter, University of Texas performed the ritual. Edward J. Trust served as the Charter President and Dr. Jack C. Eli as Advisory Chairman.



Members of Omega Gamma Chapter, Angelo State University proudly pose for their installation photo.

## Brothers on the Move

**Rev. C. L. Houston, Jr.**, an alumnus of Rho Beta Chapter, Armstrong State College (Georgia), recently completed his Doctor of Ministry Degree at Vanderbilt University and has taken an assignment in Plains, Georgia.

**Bill Oster**, a member of Beta Mu Chapter, Southwest Missouri State University, represented Alpha Phi Omega at the Jerry Lewis Telethon for Muscular Dystrophy. Those of you watching the Telethon at 6:00 A.M. (Las Vegas time) on Monday, September 6th, saw Bill present a check for \$31,000, representing funds raised for M.D. by Alpha Phi Omega Chapters, to Jerry Lewis. Brother Oster currently serves on the National Youth Council of the Muscular Dystrophy Association.

**Bob Daly**, an alumnus of Gamma Beta, San Jose State and former Section 4 Chairman, has been transferred by General Electric, his employer, to Spain.

## FALL CONFERENCE SCHEDULE

At the time of publication, the following conferences have been scheduled:

DATE	MEETING	LOCATION
Oct. 2-3	Section 21 (Iowa)	Luther College
Oct. 8-10	Section 63 (Western Pennsylvania)	U. of Pittsburgh
Oct. 8-10	Section 95 (New England)	MIT
Oct. 15-16	Sections 88 & 89 (Upstate N.Y.)	RPI
Oct. 16	Section 1 (Southern California)	Pepperdine U.
Oct. 22-23	Section 90 (Central Pennsylvania)	Penn State
Oct. 22-24	Section 48 (Northern Illinois)	Northern Illinois U.
Oct. 22-24	Section 54 (Michigan)	Hope College
Oct. 29-30	Section 99 (New Jersey)	Rider College
Oct. 29-31	Section 57 (Ohio)	Ohio U.
Nov. 5-7	Section 35 (Western Missouri)	Central Missouri State
Nov. 5-7	Section 45 (Louisiana)	Loyola U.
Nov. 5-7	Region V	West Virginia U.
Nov. 26-28	Section 74 (Florida)	Florida Tech.
Dec. 27-29	National Convention	Atlanta, Georgia



# Action...

## • TAU EPSILON - TENNESSEE TECHNOLOGICAL UNIVERSITY

At the local Omega Phi Alpha Muscular Dystrophy Danceathon, TAU EPSILON CHAPTER, TENNESSEE TECHNOLOGICAL UNIVERSITY placed first for the second year in a row. Dancing for 53 hours, chapter representatives Robbie West and Chip Maynard raised \$910.00 for M.D. You can contact Tau Epsilon at Box 5252, Tennessee Technological University, Cookeville, TN 38501.

## • KANSAS CITY ALUMNI ASSOCIATION

If your chapter is in the Kansas City area, don't be surprised if you see some strangers at a pledging or activation ceremony. They will probably be members of the Kansas City Alumni Association.

Organized a year and a half ago, the Association is working with collegiate chapters in Kansas and Missouri. The members are also helping with the reactivation of the chapter at Washburn University in Topeka, Kansas.

Participating in Regional and Sectional conferences, assisting the National Office, and working on community service projects are other activities of the Association. Since every group needs a healthy bank account, they are presently planning a garage sale as a money-making project.

What's ahead for the Kansas City alums? They are very interested in assisting college graduates who plan to settle in the Kansas City area. When a graduate is job-hunting or apartment-hunting, he should contact the Association. The members' knowledge of job contacts and the housing situation should prove helpful to the graduate.

So far, the Kansas City Alumni Association consists of a dozen alumni from Texas, William Jewell, K-State, and Rockhurst chapters. They are eager to extend their ranks. For more information, please contact Bob Reynolds, 4929 Evanston, Kansas City, Mo. 64133.

## • OMEGA ALPHA - TARKIO COLLEGE

An interesting project of one of Alpha Phi Omega's newest chapters, OMEGA ALPHA CHAPTER, TARKIO COLLEGE, is the development and maintenance of a recycling center for the town of Tarkio. Assisted by two other campus organizations, the chapter plans to collect paper and cans in the community. Contact Omega Alpha at Alpha Phi Omega, Tarkio College, Tarkio, Missouri 64491.

## • GAMMA-CORNELL UNIVERSITY

Obscure questions flew back and forth during many late evening hours as GAMMA CHAPTER, CORNELL UNIVERSITY, prepared to hold its 12th annual Trivia Contest. Entitled the Semi-Sporadic Super-Collosal Trivia Contest, the event has grown in size and stature each year it has been held. Last spring three nights of preliminary rounds preceded the final round. A local disc-jockey was the surprise moderator for the finals, held in the main student union in front of a large audience. Three teams competed that night, each composed of three members. Many valuable prizes were awarded, including six used police bullets, a free one-way trip on a local Greyhound Bus run, and a set of 150 computer printout pictures. The purpose of the event was to bring publicity and awareness of A-Phi-O's many activities and services to the campus. You can receive more information by writing Alpha Phi Omega, Willard Straight Hall, Cornell University, Ithaca, New York 14850.

## • THETA RHO - SAM HOUSTON STATE

The Brothers of THETA RHO CHAPTER, SAM HOUSTON STATE UNIVERSITY, sponsored a Little Dribblers Team in the Huntsville (Texas) basketball program last Spring. This new and very worthwhile service project was a lot of fun for both the Brothers and the boys. The chapter provided the \$100.00 entry fee and rented a gym from the First Baptist Church for practice. Uniforms were provided by Theta Rho Alumnus ('72) Gene Ebner.

Gene's younger brother Paul, assisted by Chapter Service Chairman, Ron Gary, led the team to an 8-1 record. Theta Rho Brothers and Little Sisters provided a rooting section throughout the season. For more information contact Theta Rho at P.O. Box 2212, Sam Houston State University, Huntsville, Texas 77340.



Theta Rho Little Dribbler Team (l. to r.) Coach Ron Gary, Jamey Barnett, Mark Price, Dale Hiel, Bobby Davidson, Cody Graham, Jesse McGowan, and Coach Paul Ebner.

## • BETA DELTA - EAST TEXAS STATE UNIVERSITY

Recently BETA DELTA CHAPTER, EAST TEXAS STATE UNIVERSITY, raised \$1,578.00 for two local charities by building a sidewalk on the campus and selling 4'x4' sections to organizations and individuals to draw or write whatever they desired in cement. The money raising project was sponsored by Beta Delta during the University Service Council's "Service Week." Beta Delta is one of six member organizations on the Council, which is composed of every service organization on the East Texas campus. Any chapter desiring information on how to organize this project may write to West Conklin, Box 'AA', E.T. Station, Commerce, Texas 75428.

## • RHO THETA - CAPITAL UNIVERSITY

The first annual "Sucker Drive" for the Heart Fund was conducted last spring by RHO THETA CHAPTER, CAPITAL UNIVERSITY, in Columbus, Ohio. The 26 Brothers sold a total of 1,368 suckers, collecting \$213.53 for the Heart Fund. The suckers, sold around Valentine's Day on the campus and in the surrounding community, were quite easy to sell, the chapter reports. They're willing to share their story and help other chapters set up a similar project. Write to Rho Theta at Alpha Phi Omega, Capital University, Columbus, Ohio 43209.

## • EPSILON ZETA - RENSSELAER POLYTECHNIC INSTITUTE

Every fall semester for the last several years, EPSILON ZETA CHAPTER, RENSSELAER POLYTECHNIC INSTITUTE has published and distributed information cards to the students. These cards contain emergency phone numbers, often-used campus numbers, and the numbers of key Alpha Phi Omega members. The cards also include information about Alpha Phi Omega. The cost of the cards is covered by ads from local merchants. For more information or copies of these cards contact Epsilon Zeta at Rm. 235, Student Union, Rensselaer Polytechnic Institute, Troy, NY 12181.



# CONVENTION FACTS

## when

December 27-28-29, 1976

## where

Atlanta Marriott Motor Hotel, Atlanta, Georgia

## who

Every Pledge, Member, Advisor, Life Member and Alumnus is invited

## what to bring

Exhibits of Chapter and Sectional Activities.  
500 copies of information about your best project for Service Exchange.

## how to register

Convention Services and Participation forms have been mailed to each Chapter. Complete and return these, along with the fees, to the National Office. Hotel reservation cards, which were included in this mailing, should be returned directly to the Atlanta Marriott Motor Hotel. Anyone not currently in an active Chapter may use the attached order blank to request registration forms.

## cost

Hotel Rates are:

- \$7.00 per night, quad occupancy
  - \$8.00 per night, triple occupancy
  - \$11.00 per night, double occupancy
  - \$18.00 per night, single occupancy
- (Plus 7% Georgia Sales Tax)

Chapter Awards Banquet ..... \$10.00  
Honors Banquet ..... 12.00

BANQUET TICKETS MUST BE PURCHASED IN ADVANCE, so that the Hotel can be advised of the estimated attendance.

Convention Services and Participation Fee  
\$15.00 (Before December 10)  
18.00 (After December 10)

## note

Each Chapter has received a registration form. Please use the order form below only if you are not a member of an active chapter.

Please send me the registration materials for the 1976 National Convention.

Name \_\_\_\_\_

Street Address \_\_\_\_\_

City \_\_\_\_\_

State \_\_\_\_\_

Zip Code \_\_\_\_\_

Chapter \_\_\_\_\_

School \_\_\_\_\_