



torch and trefoil



FALL, 1979

THE HOWARD R. PATTON PLEDGE CLASS

The Fall, 1979 Pledge Class has been dedicated by the National Board of Directors to Howard R. Patton, Sectional Chairman Emeritus of New Jersey. Brother Patton has a distinguished history of service to Alpha Phi Omega.

Mr. Patton is a graduate of Indiana Central University. After graduation, he was appointed Scout Executive in Bloomington, Indiana. On December 7, 1930 he was initiated as Scouting Advisor of Mu Chapter, Indiana University and served in this capacity until 1933. He returned to medical school at Indiana University and was elected President (or Grand Master as it was termed in those days) of Mu Chapter in 1934-35. He returned to the Scouting profession, serving as Scout Executive in East St. Louis, Illinois and Terre Haute, Indiana. While in Terre Haute he was Scouting Advisor for Alpha Upsilon, Depauw University and Beta Lambda, Indiana State University.

Brother Patton continued his service to Alpha Phi Omega through the years, attending all but two of Alpha Phi Omega's National Conventions from 1940 to the present. He was Sectional Chairman for New Jersey from 1960 to 1970, during which time he organized and installed 16 chapters in the section. In 1970 the section elected him Sectional Chairman Emeritus.



He has served on the National Ritual Committee of the Fraternity on two separate occasions, on the National Membership Committee, and on the Leadership Development Committee since 1971. He was the recipient of the National Distinguished Service Award in 1968 and the Region I Distinguished Service Award in 1977.

Professionally Mr. Patton was associated with the Boy Scouts of America from 1930 until his retirement in 1969. He served as Scout Executive in Bloomington, Indiana, Terre Haute, Indiana, and East St. Louis, Illinois. On the BSA National level he was Assistant to the National Director of Program, National Director of the World Friendship Fund, Deputy Regional Scout Ex-

ecutive for Region 2, and Assistant Director of the Personnel Division. He was on the national staff of seven national jamborees, from 1937 to 1969.

Camping has been a beneficiary of Brother Patton's interest, and he has directed and served on camp staffs since 1922. He has been active in the American Camping Association since its inception and has held numerous leadership positions in that organization. He has also been active in the National Eagle Scout Association and was Deputy Director of three of NESA's National Conventions.

Leadership Development has been a specialty of Brother Patton, and he has developed and directed 22 Leadership Development Seminars for Alpha Phi Omega. More than 500 members of the Fraternity have participated in these seminars.

Howard R. Patton has distinguished himself in service to youth and Alpha Phi Omega can consider itself fortunate to have had his interest and involvement for all but a brief period of its existence. Those who know him personally will attest to his continued commitment to Leadership, Friendship and Service. The Fall, 1979 Pledge Class of Alpha Phi Omega can well be proud to bear the name of one of the outstanding leaders of the Fraternity.

torch and trefoil

Alpha Phi Omega
National Service Fraternity

Volume 55, No. 1
Fall, 1979

National Officers

Lorin A. Jurvis Washington, DC
National President
Dr. C. P. Zlatkovich Bryan, TX
National Vice President

Members-at-Large

Dr. Stan Carpenter Monticello, AR
Lewis Finkel New York, NY
Dr. John E. Hanke Cheney, WA
Clark Israel Kansas City, KS
Sid Smith Belvedere, CA

Regional Representatives

I. Ed M. Andrews Orono, ME
II. Warren C. Weidman Reading, PA
III. Robert J. Harris Raleigh, NC
IV. Wendell Wainwright Memphis, TN
V. William B. Rugh Toledo, OH
VI. Berkeley P. Duncan Ann Arbor, MI
VII. Abe Frishman Carrollton, TX
VIII. Darrell Spoon Wellington, KS
IX. Michael W. Suhr Minneapolis, MN
X. Earle M. Herbert Los Angeles, CA

National Executive Director

Roger A. Sherwood, CAE Kansas City, MO

Legal Counsel

Alex M. Lewandowski Kansas City, MO

Past Presidents

M. R. Disborough Wilmington, DE
E. Ross Forman Philadelphia, PA
Tom T. Galt, M.D. Spartanburg, SC
Lawrence L. Hirsch, M.D. Chicago, IL
Dean Arno Nowotny Austin, TX
Dr. Glen T. Nygreen Bronx, NY
William S. Roth Birmingham, AL
Dr. Lester R. Steig Palo Alto, CA
Lucius E. Young, LTC, Ret. Washington, DC

Life Members

George F. Cahill, CAE Pittsburgh, PA
Irwin H. Gerst Palos Verdes Peninsula, CA
Sidney B. North Lee's Summit, MO
Dr. Harold F. Pote LaJolla, CA
Joseph Scanlon Kansas City, MO
A. G. Spizzirri Louisville, KY

Founding Life Members

Lewis B. Blair Cheverly, MD
Ellsworth S. Dobson Collbran, CO
Herbert Heinrich Honolulu, HI
Donald L. Terwilliger Deal Park, NJ
William T. Wood Delray Beach, FL

Ex-Officio Members

Downing B. Jenks St. Louis, MO
James L. Tarr North Brunswick, NJ

TORCH AND TREFOIL (USPS 633-960) is issued regularly four times a year, September, November, February and April, from Office of Publication, 1100 Waltower Building, 823 Walnut Street, Kansas City, Missouri 64106. Printed by Rosse Lithographing Company, Printers and Lithographers, Kansas City, Missouri. Second Class Postage paid at Kansas City, Missouri. Subscription price \$1.50 per year.

CONTENTS

The Howard R. Patton Pledge Class	1
"Service Day '79: A Celebration of Service"	2
A Message from the President	3
Service — Our Most Important Product	3
Membership on the Move	3
Alumni — Alpha Phi Omega Wants/Needs You	3
Fraternity Development — Moving Ahead	4
Leadership Development	4
Alpha Alpha Alpha Installed	5
Installations	5
Board Meets in Kansas City	6
Your Board on the Move	6
Fall Conference Schedule	6
Action	7

"SERVICE DAY '79: A CELEBRATION OF SERVICE"

The true significance of Alpha Phi Omega does not appear until all of the service projects, all of the people who are helped and all of the benefits our nation derives are added up. One of the most talked about "dream projects" has been a nationwide effort in which all of our chapters are involved. Clearly, the logistics of one such effort would overwhelm a volunteer force such as ours. And faced with this reality, nothing has been tried.

But the National Service Committee has developed an exciting new approach. Instead of trying to get all of the Fraternity involved with one project at the same time, it is trying to get everyone working on some project on one day — November 3, 1979. "Service Day" as it has been designated, is designed to have our nationwide Brotherhood involved in a demonstration of our powerful service impact.

Each chapter will be receiving a complete information packet by mail. Briefly, however, here is what we are hoping to see happen:

- On November 3, 1979, 100% of our chapters will be involved by carrying out a service project of some type.
- Each chapter will publicize its project as part of "Service Day '79".
- Each chapter will try to recruit other community service groups to participate in this effort, either with the chapter or in their own project.
- Local Mayors will be asked to proclaim the day "A Celebration of Service".

A nationwide report of our activities will be distributed shortly after November 3, 1979. We are working to have total national coverage of our activities. With your cooperation, "Service Day '79" will also be a tremendous public relations boost for Alpha Phi Omega!

This program will bring home the total significance of Alpha Phi Omega. It can renew the spirit of the Fraternity and open up numerous new contacts on the campus and in the community for your chapter.

Begin your plans now . . . don't miss out on this "Celebration of Service".

. . . The Chapter Program Review is being developed by a Special Committee and will be distributed to chapters, along with the H. Roe Bartle Chapter Award Form, in the near future. Watch for it!!

A MESSAGE FROM THE PRESIDENT

by Lorin A. Jurvis, National President

At this beginning of the new academic year, Alpha Phi Omega is faced with many challenges and opportunities. The first is to provide truly relevant service on your campus and in your community. By carefully identifying the needs and actively involving all Brothers and pledges in service projects, your chapter can make an even greater contribution. Your consideration is invited to the National Service Program of Emphasis.

A second challenge is to extend the benefits of membership in the Fraternity to other students — to give them the opportunity to render service as part of your chapter. This requires careful selection of prospective members, personal invitation, and well organized rush and pledge programs. A third challenge is leadership development. This can be accomplished within your chapter through committee assignments, chairmanships and election to office. Training sessions and workshops and sectional and regional conferences offer additional opportunities.

A fourth challenge is to the alumni. Your continued support through volunteer leadership positions as chapter advisors, sectional chairmen and staff, and involvement in local alumni associations is vital to the Fraternity.

Your Regional Representatives and National Committees have been hard at work. An annual program review has been developed to assist each chapter in evaluating its past operations and setting goals for the coming year. A model service program has been developed, primarily to assist new chapters, but of use to all. These and other actions of your National Board of Directors are reported elsewhere in this issue.

Alpha Phi Omega exists first on campus, but we are truly a National Fraternity. Take up the challenges, seek out the opportunities, and this will be your finest year for Leadership, Friendship and Service.

SERVICE — OUR MOST IMPORTANT PRODUCT

by Dr. Stan Carpenter, National Service Chairman

The National Service Committee has been working on some exciting projects since the Nashville Convention. First and foremost is "Service Day '79: A Celebration of Service". On November 3 chapters across the nation will unite in the fellowship of service (see page 2 of this issue). The Service Committee and National Public Relations Committee have developed supporting P.R. materials, and these will be distributed to all chapters.

Also developed this year is a Model Service Program. This outline aims at giving basic advice and guidance to new chapters just setting up a program and to established chapters wishing to reevaluate their efforts. Included are over 50 general and specific project ideas.

The National Program of Emphasis (Service to Youth) adopted by the 1978 Convention will be publicized in *Torch* and *Trefoil* and Chapter Bulletins. This will feature both actual and potential projects chapters can undertake in this area. Each issue will spotlight a Program of Emphasis program, so please send information about your efforts to the National Office.

The Service Project Exchange compiled at the National Convention is being reproduced by Xi Delta Chapter at Texas A&M for distribution to chapters not in attendance.

The Service Committee is alive and well. Watch for further developments!

MEMBERSHIP ON THE MOVE

by Sid Smith, National Membership and Extension Chairman

For the past ten months, the National Membership and Extension Committee has been busy in the implementation of convention mandates, strengthening of on-going programs and development of new programs and services.

This Fall marks a significant break-through in Alpha Phi Omega publications. "The Pledge Trainer's Guide", available now, is our first fully illustrated publication and fulfills a convention mandate for its creation. We are very excited about its potential. A replacement brochure for "Everybody's Gotta Have A Gang" is on the artist's table and should be ready this Spring.

"Reach Out", a program of reactivations in Alpha Phi Omega requires little amplification. Past (and future) issues of *Torch* and *Trefoil* document our progress.

The National Membership and Extension Committee is also working closely with the Chapter Program Review Committee to develop aids to effective and strong membership programming. We also contribute to other areas of concern, such as a model service program, improved Scouting relations, the Chapter Presidents Workshop, and several administrative aids to assist our many field volunteers in bringing you, the chapters, the highest level of support services in our history.

To better assist you in conference programs, a Membership Workshop Leader's Guide is also under development and should be available soon.

You are our membership, and it is vital to our Committee that we know your needs, your concerns, your problems and your solutions. Please let us hear from you.

ALUMNI — ALPHA PHI OMEGA WANTS/NEEDS YOU

by Lewis Finkel, National Alumni Chairman

If you are not attending your undergraduate institution, you are an alumnus. In this capacity, we need your help.

Alumni play many very important roles in our Fraternity. First and foremost, many alumni are Chapter Advisors for the undergraduate chapters — without strong, active, interested advisors many of our chapters would die.

Alumni serve as Sectional Representatives, assisting the Sectional Chairman as a liaison between chapters and the Regional Representative. Alumni serve as Sectional Chairmen, Regional Representatives, Members-At-Large of the Board of Directors and National President and Vice President.

You might say alumni are everything from advisors, mentors and sages to the consciences of the undergraduate chapters and the National Fraternity. All of these positions are important and all are strictly volunteer positions, without any compensation from the National Fraternity.

"Reach Out" is a multi-purpose phrase in our Fraternity. The undergraduate chapters continually "Reach Out" to the alumni for assistance, advice, counsel and leadership. (They do want advice but do not want interference in their affairs.)

"Reach Out" is also Alpha Phi Omega's multi-faceted, far ranging, reactivation effort; alumni form an integral part of this dynamic program.

Alumni help the Fraternity whether or not they are affiliated with a local Alumni Association. If you aren't a part of an Alumni Association and would like to be, write to the National Office and you will be given either the address of the nearest Alumni Association or information on how you can form an Association in your area. While talking about Alumni Associations, let me say a few words about these organizations. These Associations are all independently governed, autonomous organizations which are allowed to use the name of Alpha Phi Omega because they are composed of alumni of the Fraternity and they follow basic, simple guidelines set up by the National Conventions.

Alumni Associations are formed for a variety of reasons including:

Friendship — Brothers wanting to get together after graduation.

Service — Extending the Service of Alpha Phi Omega beyond the undergraduate days on campus.

Leadership — To be a manpower pool for the area, for the Sectional, Regional and National leadership and to be at the forefront of the alumni movement.

What can Alumni do? You can help, and we need this help. You can help the undergraduate chapter as an advisor (Warning: Giving advice is not running the chapter for the undergraduates). You can help the Sectional organizations. You can help the National organization (you automatically help National by helping the chapters and sections). You can help by contributing financially to the local chapter and the National Fraternity.

You may ask, what do I, as an Alumnus, get from the National Fraternity and from helping the chapters? Satisfaction! Remember why you initially joined Alpha Phi Omega?

Alumni involvement is a two way street: We help you, as stated above, and more importantly, you help the Fraternity and undergraduate Brothers. I started by talking about chapter advisors, and I shall end this article the same way. You, the advisors, are the backbone, the continuity of the Fraternity. We need you and we thank you.

FRATERNITY DEVELOPMENT — MOVING AHEAD

by Dr. C. P. Zlatkovich, National Vice President

The Fraternity Development project was initiated at the request of President Jurvis in order to create a plan for dealing with the challenges and opportunities that Alpha Phi Omega will face in the future. Like most organizations, our personnel and financial resources are limited. Only our enthusiasm is without limits. We must allocate our resources in ways that will produce the best results.

We describe Alpha Phi Omega as a National Service Fraternity, and we have made substantial progress in making Alpha Phi Omega truly national in scope. Our 341 active chapters are located in 43 states, the District of Columbia, and Puerto Rico. Although we have made progress toward the development of a nationwide organization, our geographic distribution is uneven. Areas of relative strength include all of the South — the South Atlantic, East South Central, and West South Central states. On the other hand, both the Mountain and Pacific states in the West are areas of obvious weakness. Strangely, both areas of greatest strength and weakness are among the rapidly growing portions of the nation.

One of the most serious problems facing Alpha Phi Omega is the loss of formerly active chapters. Only 57 percent of the chapter charters ever issued were active as of September, 1979. During our first 53½ years we issued 601 charters — of these 341 chapters have survived and 260 have ceased to exist. In a few instances, the colleges themselves no longer exist, but in most cases, our chapters simply faded away.

Our purpose is "to assemble college students in a National Service Fraternity . . ." In order to do that, we need to be where the students are — on campuses throughout the nation. There are about 11 million college students enrolled in 2,776 institutions of higher education across the country. Of these, over 7 million are students at the 1,774 institutions with at least a four-year program.

Unfortunately, only 27 percent of the college students across the country have the opportunity to be exposed to an active Alpha Phi Omega chapter. The other 73 percent of all college students go to school on campuses where there is no Alpha Phi Omega chapter. Obviously, something needs to be done.

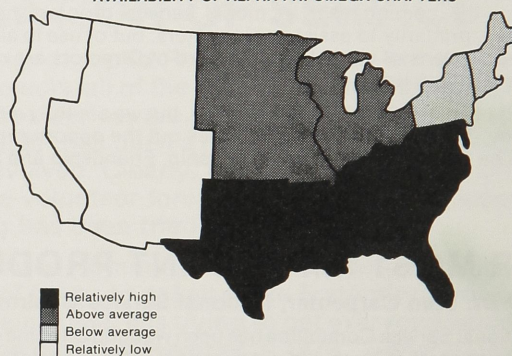
One way to improve the odds in our favor is to concentrate our reactivation and new chapter efforts on the campuses with the

relatively large enrollments that will enable us to accomplish our fundamental purpose. To this end, we have identified a group of some 210 campuses that really **should** have Alpha Phi Omega chapters. At present, we have chapters on 100 of these campuses. Sadly, we have lost chapters on 71 of the campuses over the years, and 39 of the campuses have never had a chapter.

Most of the selected campuses are rather large — 194 of them have 10,000 or more students each. Significantly, these 194 campuses represent 51 percent of all students at four-year schools. The other selected campuses are smaller institutions of national or regional significance. Each is a campus on which a national service fraternity **ought** to have a chapter.

As individuals, we are fortunate. We not only have the benefit of exposure to higher education — we have had the opportunity of higher education on a campus with an Alpha Phi Omega chapter. Other students — a majority in fact — have not been so fortunate. (With no chapter around, they may not even know what they are missing.) We need to reach out to those campuses that do not have Alpha Phi Omega chapters and make every effort to bring Alpha Phi Omega to those campuses. By doing so, we will not only further the development of Alpha Phi Omega — we will exemplify our three cardinal principles: Leadership, Friendship, and Service.

AVAILABILITY OF ALPHA PHI OMEGA CHAPTERS



LEADERSHIP DEVELOPMENT

by Clark Israel, Leadership Development Chairman

Unlike your collegiate course work, preparation for a leadership role in your chapter requires more than just reading chapters 1 through 3 in a textbook. There are many ways to develop leadership skills, and these skills are available at every level of the Fraternity.

CHAPTER — Your first exposure to leadership development in Alpha Phi Omega will occur in your chapter. Serving on committees, chairing projects and programs, and accepting responsibilities for chapter activities are part of this process. Your advisors play a role when they counsel with and assist the officers. They can be an important factor in chapter leadership development.

The Chapter Program Planning Conference developed by the Leadership Development Committee is an excellent tool. This 3-4 hour program, led by the chapter president, advisors and sectional personnel and involving the entire chapter, covers communication skills, evaluation of current chapter program, and setting the calendar for the year. Often chapters hold the program in a retreat setting early in the Fall to plan for the coming year. This program is vital to good chapter planning. A guide for a Chapter Program Planning Conference is available from the National Office.

SECTION & REGION — The Sectional and Regional Conferences typically provide outstanding opportunities for Leadership Development. These meetings feature sessions for individual officers, for chapter program areas, and for the interchange of ideas among chapters. An example of the program area is a new guide book being developed by the Membership and Extension committee to facilitate the development of the chapter membership program.

The Leadership Development Seminar offered through the Leadership Development Committee is an intensive six hour workshop which has been offered to more than 450 Fraternity members over the past seven years at Sectional and Regional Conferences and national Conventions. The course is based upon materials gathered from a variety of sources, and it will be

offered this Fall and Winter at Regional conferences in Regions I, II, III, V, VI and IX, as well as at a few Sectional Conferences.

NATIONAL — Leadership development experiences are offered at National Conventions and through the Chapter Presidents Workshop. Serving on Convention Reference Committees, attending the developmental seminars, and participating in the Convention legislative sessions all afford the participants developmental opportunities.

The Chapter Presidents Workshop has been offered for the past two summers at Southern Illinois University-Edwardsville. In August, 19 members from across the nation gathered for a weekend to learn more about their roles as chapter presidents. Leadership for the program included Board Members Sid Smith and Clark Israel, National Executive Director Roger Sherwood, Director of Membership Services Fred Heismeyer, Leadership Development Committee member Hal Hagemeyer and Sectional Chairmen Bill Brown and Roger Elliott. Additional input was supplied by Sectional Chairmen Wilfred Krenek and Dan Lessley. Local support was provided by Epsilon Pi Chapter and Warren Stookey. The program had three major components: (1) Theory sessions which established a base of leadership skills, including such topics as communication and use of resources; (2) Practical skill sessions focusing on chapter goal setting, evaluation of chapter program, the use of chapter executive committees and the membership cycle of recruiting, education and retention, and; (3) Role playing and other practical exercises. In this way every person both "taught" and "learned" as successful methods of chapter operations were freely traded.

The evaluations were positive. For many, it was the first contact with members from across the nation. For all it was a shot in the arm which should help them energize their chapters this Fall.

Leadership is one of our three cardinal principles, and is often overlooked. The Leadership Development Committee is dedicated to the task of insuring that opportunities for leadership experiences are available for every member of Alpha Phi Omega.

ALPHA ALPHA ALPHA INSTALLED!

A long-awaited dream for Alpha Phi Omega came true on April 29, 1979 when Alpha Alpha Alpha, the Fraternity's 601st Chapter, was installed at Maryville College, St. Louis, Missouri. National President Lorin A. Jurvis presented the charter to the chapter. Assisting were Roger A. Sherwood, National Executive Director, Clark Israel, National Leadership Development Chairman, and Bill Brown, Sectional Chairman. More than 20 alumni from Missouri and Illinois attended the installation.

There were sixteen undergraduate members, five advisors and one honorary member in the charter group. Charter members were President Charles R. Bacher, Jr., Vice Presidents Henry W. Rowell, Jr. and Joseph M. Davis, Secretary Laura J. Esker, Treasurer Cynthia Browne McCambridge, and members Russell H. Beerman, Ann D. Campbell, Celia E. Giltinan, Richard L. Jente, Mark David Kaintz, Peter D. Kappler, Susanne E. Kovacik, Therese A. LeBeau, Pamela Sue Morgan, Olivia R. Pritchard, and J. Sprang. Gregory R. Ball, Director of Financial Aids is Advisory Chairman. Faculty Advisors are Dr. Glen Weisner, Vice President for Academic Affairs, and Michael H. McGuire, Assistant Professor of Psychology. Eli Brewer and Dick Jente of the St. Louis Area Council of the Boy Scouts of America serve as Scouting Advisors. Dr. Claudius H. Pritchard, College President, was initiated as an Honorary Member.



Lorin A. Jurvis, National President and Dr. Claudius H. Pritchard, Jr., President of Maryville College.

Alpha Alpha Chapter, University of Illinois provided the ritual team for this important occasion. The members did an outstanding job, having memorized the ritual for this ceremony. Alpha Alpha President Mark Fisher led the ritual team.

Maryville College is a private, independent institution of 1,000 students. It was founded in 1872 and occupies an attractive campus in suburban St. Louis.

The petitioning group was originally formed in 1977 and has rendered considerable service during the petitioning process. Among its accomplishments, Alpha Alpha Alpha has helped organize Freshman Orientation, assisted with three registrations, served as guides for campus tours, helped at the President's reception, assisted with the "Students Meet Trustees" Programs, helped to redesign the student bookstore and worked with the St. Louis Area Scout Council.

April 29, 1979, in accordance with a resolution adopted by the 1978 National Convention, was proclaimed a National Day of Recognition by the National President. All in Alpha Phi Omega welcome Alpha Alpha Alpha Chapter as a milestone in our history. If you'd like to extend your personal congratulations, or that of your chapter, you can write to Alpha Alpha Alpha at Alpha Phi Omega, Maryville College, Duchesne Hall D-6, 13550 Conway Road, St. Louis, Missouri 63141.



Alpha Alpha Alpha members pose for installation photo.

INSTALLATIONS

BETA PHI

UNIVERSITY OF SOUTHWESTERN LOUISIANA

Alpha Phi Omega returned to the campus of the University of Southwestern Louisiana in Lafayette on April 27, 1979 with the reactivation of Beta Phi Chapter. Fred C. Heismeyer, Director of Membership Services, represented the National President at the installation. He was assisted by Lester Williams, Louisiana Sectional Chairman. The ritual was conducted by representatives of several New Orleans Chapters. The reactivation group was composed of seventeen members and four advisors. Terronce Tillman serves as Chapter President and Jimmy Clarke as Advisory Chairman.

OMEGA PSI

JACKSON STATE UNIVERSITY

On March 31, 1979 Alpha Phi Omega was officially recognized on the campus of Jackson State University, Jackson, Mississippi with the installation of Omega Psi Chapter. Officiating at the installation was Wendell Wainwright, Region IV Representative. He was assisted by Gary Ramsey, Mississippi Sectional Chairman. Thirty-one members, eight advisors and eight honorary members were included in the

charter group. The ritual was conducted by members of Omega Phi Chapter, Tougaloo College. Lendon Cole was the Charter President and Harold Haughton serves as Advisory Chairman.

OMEGA OMEGA



The 600th chapter of Alpha Phi Omega, Omega Omega, was installed at Gallaudet College, the National College for the Deaf, in Washington, D.C. on April 28, 1979. Lorin A. Jurvis, National President, presented the charter. He was assisted by Lucius E. Young, LTC, Ret., Past National President, Robert J. Harris, Region III Representative, and Gerald Schroeder, Sectional Chairman. The ritual was conducted by Mu Alpha Chapter, Georgetown University. There were 17 active members, 5 advisors and 2 honorary members in the petitioning group. Terry L. Klein serves as Chapter President and Gina Anne Olivia as Advisory Chairman.

BOARD MEETS IN KANSAS CITY

The National Board of Directors met at the Crown Center Hotel in Kansas City, Missouri on July 27-29, 1979. Present were:

Lorin A. Jurvis	Wendell Wainwright
Dr. C. P. Zlatkovich	William B. Rugh
Dr. Stan Carpenter	Berkeley P. Duncan
Lewis Finkel	Abe Frishman
Dr. John E. Hanke	Michael W. Suhr
Clark Israel	Earle M. Herbert
Sid Smith	George F. Cahill
Lawrence L. Hirsch, M.D.	Irwin Gerst
Roger A. Sherwood	Sidney B. North
Ed M. Andrews	Joseph Scanlon
Warren C. Weidman	Lucius E. Young, LTC, Ret.
Robert J. Harris	

Joining the Board were: Fred C. Heismeyer, Director of Membership Services; Sam Farler, BSA National Director of Personnel; John Deraval, Endowment Trustee; Fred Pollack, National Public Relations Committee Chairman; Howard R. Patton, Leadership Development Committee; James Macaulay, Leadership Development Committee; Bob Hainline, Michigan Section Chairman; Joe Morrone, Oklahoma Sectional Chairman; Ron Kite, Kansas Sectional Chairman; Barbara Hitt, Region VIII Alumni Representative; Russel Kirk, Region VII Alumni Representative; Susan Canavan, North Central Texas Sectional Secretary; and Dean Graner, alumnus of Alpha Eta Chapter, University of Missouri-Kansas City.

The following actions were taken by the Board:

- Received reports from the 21 National Committees, 10 Regional Representatives and National President and Executive Director.
- Adopted a revised Salary Administration Procedure proposed by the National Office and Personnel Committee, subject to review by the National Legal Counsel.
- Adopted a policy and amended the job description of the Executive Director to specify that he reports to the National President and is responsible in the performance of his duties to the National President.
- Approved salary ranges for all exempt and non-exempt staff members.
- Changed the mileage rate for use of private automobiles by staff for Fraternity business to be based upon the mileage rate allowable for business expense in the U.S. Internal Revenue Code.
- Adopted a budget for fiscal 1980 calling for income of \$157,700 and expenditures of \$167,200.
- Directed the National President to appoint a Fund Raising Committee.
- Expressed appreciation and approbation to the Endowment Trustees to establish a Codicil Club to encourage Alpha Phi Omega alumni to name Alpha Phi Omega in their wills.
- Established November 3, 1979 as a National Service Day, to be promoted as "Service Day '79: A Celebration of Service".
- Authorized a Chapter President's Workshop tentatively scheduled for August 8-10, 1980 at a site to be selected by the Leadership Development Committee, and subject to the affirmative evaluation of the 1979 Chapter President's Workshop.
- Encouraged the prompt reporting of the actions of Sectional Conferences by the Sectional Chairmen.
- Dedicated the Fall, 1979 Pledge Class to Howard R. Patton.
- Scheduled the next Board Meeting for February 8-10, 1980 at the Los Angeles Marriott Hotel, Los Angeles, California.

YOUR BOARD ON THE MOVE

A number of members of the National Board of Directors have recorded significant accomplishments in recent months, and we'd like to feature the progress of the Fraternity's leadership.

- **Lorin A. Jurvis, National President**, was appointed Budget Director for the U. S. State Department.
- **Dr. C. P. Zlatkovich, National Vice President**, is now an Economist for the Industrial Economics Research Division of the Center for Strategic Technology at Texas A&M University.
- **Lawrence L. Hirsch, M.D., Past National President**, was elected President of the Chicago Medical Society, one of the nation's largest local medical societies.
- **Dr. Stan Carpenter, National Service Chairman**, received his Ph.D. from the University of Georgia and has accepted a position as Dean of Student Affairs at the University of Arkansas-Monticello.
- **Roger A. Sherwood, National Executive Director**, has been designated a Certified Association Executive (CAE) by the American Society of Association Executives and was elected President of the Mid America Society of Association Executives.
- **Ed M. Andrews, Region I Representative**, has been appointed Director of the Cooperative Education Field Experience Program at the University of Maine-Orono.
- **Wendell Wainwright, Region IV Representative**, received his Masters in Social Work and has accepted a position as Director of Social Services at the National Health Corps facility in Bolivar, Tennessee.

FALL CONFERENCE SCHEDULE

At the time of publication, the following Conferences have been scheduled.

Dates	Conference	Location
September 29	Section 32 (Oklahoma)	Southwest Oklahoma State University
October 26-28	Section 63 (Western Pennsylvania)	Washington and Jefferson College
October 26-28	Section 70 (Western Tennessee, Western Kentucky)	University of Tennessee at Martin
October 26-28	Section 95 (New England)	Massachusetts Institute of Technology
October 26-27	Section 90 (Central Pennsylvania)	Pennsylvania State University
October 27	Section 1 (Southern California)	Long Beach, California
October 27	Section 34 (Kansas)	Kansas State University
November 2-4	Section 45 (Louisiana)	New Orleans, Louisiana
November 9-11	Sections 88-89 (Upstate New York)	Rensselaer Polytechnic Institute
November 9-11	Region IX	Minneapolis, Minnesota
November 10	Section 99 (New Jersey)	Westminster Choir College
November 10-11	Section 2 (Arizona, Southern California)	University of Arizona
November 16-18	Region VII	Texas Lutheran College
November 23-25	Regions V & VI	University of Michigan
November 30-December 2	Region III	Virginia Polytechnic Institute and State University
December 21-22	Region IV	Birmingham, Alabama
December 27-29	Regions I & II	Great Gorge, New Jersey
December 27-29	Region X	University of Nevada-Reno
December 28-29	Region VIII	University of Colorado

Action...

NATIONAL PROGRAM OF EMPHASIS

Twenty-three Alpha Phi Omega Chapters conducted projects to benefit the Muscular Dystrophy Association, which provides funds for research and services to persons afflicted by Muscular Dystrophy. Since this is a youth disease, the projects conducted by these chapters fall within the National Program of Emphasis for 1979-80, which is Service to Youth. The three chapters leading the way in these projects all conducted Dance Marathons. They were: BETA MU, SOUTH-WEST MISSOURI STATE UNIVERSITY, which raised \$25,100; BETA ETA, UNIVERSITY OF MISSOURI-COLUMBIA, which raised \$15,211; and XI BETA, KEARNEY STATE COLLEGE (NEBRASKA), which raised \$9,343. Bill Seffens of Beta Mu represented Alpha Phi Omega on the Jerry Lewis Telethon for Muscular Dystrophy on September 3, presenting a check to Jerry Lewis for \$94,000, representing funds raised by Alpha Phi Omega. Participating chapters and their events were:

Region II

Phi — Syracuse University — Sponsored Couple in Dance-a-thon

Zeta Theta — Drexel University — "Crazy Days for MDA"

Tau Eta — SUNY A&T Cobleskill — Dance-a-thon

Region III

Pi Delta — Western Carolina University — Rock-a-thon

Rho Mu — Belmont Abbey College — Shamrocks Against Dystrophy

Region IV

Tau Epsilon — Tennessee Tech University — Dance-a-thon

Region V

Kappa — Carnegie-Mellon University — Ugly Man on Campus Contest

Zeta Theta — Miami University — Dance-a-thon

Lambda Tau — Salem College — Dance-a-thon

Pi Chi — Duquesne University — Sponsored Couple in Dance-a-thon

Region VI

Zeta Gamma — Valparaiso University — Dance-a-thon

Eta Sigma — Illinois College — Dance-a-thon

Tau Omicron — Indiana U-Purdue U-Indianapolis — Dance-a-thon

Region VIII

Lambda Xi — Pan American University — Participated in Dance-a-thon

Xi Delta — Texas A&M — Bowl-a-thon

Phi Xi — Austin College — Dance-a-thon

Region VIII

Epsilon — Northeast Missouri State University — Dance-a-thon

Beta Eta — University of Missouri-Columbia — Dance-a-thon

Beta Mu — Southwest Missouri State University — Dance-a-thon

Beta Omicron — University of Missouri-Rolla — Dance-a-thon

Gamma Theta — University of Colorado — Casino Night

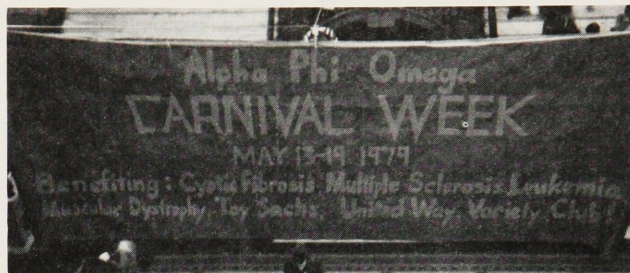
Gamma Xi — Rockhurst College — Dance-a-thon

Xi Beta — Kearney State College — Dance-a-thon

• ZETA THETA — DREXEL UNIVERSITY

Last Spring ZETA THETA, DREXEL UNIVERSITY (PENNSYLVANIA) sponsored a Carnival Week on the campus. The event consisted of a bike-a-thon, Casino Nite, a day

with a Philadelphia Eagles football player and two cheerleaders, and a variation of TV's Family Feud, called "Faculty Feud" in which two deans and the University President participated. The week raised over \$1,100, which was donated to various charities, among them Cystic Fibrosis, Multiple Sclerosis, Leukemia, Muscular Dystrophy, Tay Sachs, United Way and Variety Club. You can write to Zeta Theta at Room 3031, Educational Activities Center, 3230 Chestnut Street, Drexel University, Philadelphia, Pennsylvania 19104.



Banner at Drexel University proclaiming Zeta Theta's Carnival Week.

• EPSILON MU — UNIVERSITY OF MARYLAND

For the past two years EPSILON MU CHAPTER, UNIVERSITY OF MARYLAND, has run a can recycling project for the benefit of St. Jude Children's Research Hospital. By Spring 1979 nearly 4,000 pounds of scrap aluminum had been collected, 3,000 pounds of which was from the 1978-79 school year. This resulted in nearly \$300 raised for St. Jude.

Participation has grown from 5 dorms in Fall 1977 to 10 dorms and 10 Greek organizations in Spring 1979.

The drive is being run in cooperation with the campus Ecology Club which, in return for storage space and sorting, receives a small portion of the per pound return. Collection canisters and plastic bags were donated by a local Reynolds Aluminum recycling center; posters and advertising materials were donated by St. Jude.

Epsilon Mu would be happy to exchange ideas with any chapter which is now running, or would like to run, a similar service. Write to Epsilon Mu at Box 72, University of Maryland, College Park, Maryland 20742.



Epsilon Mu members at can recycling project.

*If you wish the spirit
of Service to be viable on the
campus of tomorrow, remember
Alpha Phi Omega in your will.*

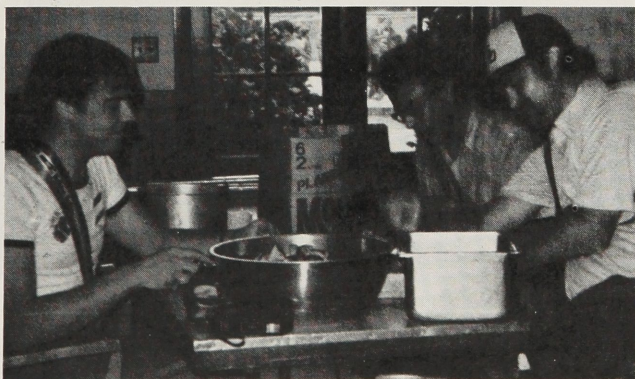
Action...

• MU ALPHA — GEORGETOWN UNIVERSITY

Prompted by the murder of a student, the members of MU ALPHA CHAPTER, GEORGETOWN UNIVERSITY (WASHINGTON, D.C.) organized a campus-wide escort service. The chapter is working in conjunction with the campus Security Department and student government to help make the campus safe for the students. For more information write to Mu Alpha at P.O. Box 975, Hoya Station, Washington, D.C. 20057

• ALPHA DELTA — SAN DIEGO STATE UNIVERSITY

Service to youth has been a prominent feature of the program of ALPHA DELTA CHAPTER, SAN DIEGO STATE UNIVERSITY. Working with the local Scout Council, the members assisted with the Handicapped Camporee. Among other services, the chapter helped prepare and serve lunch to the hungry Scouts. Additional services to youth include taking trips with children from local orphanages, working on the Muscular Dystrophy Telethon, and painting and repairing several youth centers. For more information contact Alpha Delta at Organizations Center, San Diego State University, San Diego, California 92128.



Alpha Delta Brothers hard at work peeling potatoes at the handicapped Camporee.

• SIGMA ZETA — MARS HILL COLLEGE

At the chapter's annual rock-a-thon for Easter Seals, Bob Eddin of SIGMA ZETA CHAPTER, MARS HILL COLLEGE (NORTH CAROLINA) rocked for 50 hours. In doing so, the chapter raised \$2,000 from pledges and contributions, more than double the previous year's total. You can contact Sigma Zeta at Box 3-C, Mars Hill, North Carolina 28754.



Sigma Zeta Brother Bob Eddins rocked for 50 hours in the parking lot of Innsbruck Mall in Asheville, North Carolina to raise \$2,000 for Easter Seals.

• TAU MU — UNIVERSITY OF SOUTH FLORIDA

The Spring Rush Project of TAU MU CHAPTER, UNIVERSITY OF SOUTH FLORIDA, featured the painting of a home for the Beach Place Runaway Center. Approximately 35 members and interested students participated in the project, which gained good publicity for the chapter when the local newspaper featured an article and photo of the event. You can reach Tau Mu at UC Box 2439, University of South Florida, Tampa, Florida 33620.

• XI DELTA — TEXAS A&M UNIVERSITY

Service to Scouting was part of the Spring program of XI DELTA CHAPTER, TEXAS A&M. At the Annual Scout Circus, the chapter was in charge of the manpower needed to supervise and help with the events. The members also staffed the Circus concession stand. Xi Delta may be contacted at Box 7454, College Station, Texas 77844.

• EPSILON ZETA — RENSSELAER POLYTECHNIC INSTITUTE

On Saturday, April 28, over 60 Brothers and pledges of EPSILON ZETA CHAPTER, RENSSELAER POLYTECHNIC INSTITUTE (NEW YORK), travelled to Camp Barker, the local Troy, New York Boy's Club camp. The camp was in a very run-down condition, having been vandalized over the winter, plus having less than satisfactory upkeep due to manpower shortages added onto inferior construction. The cabins at this overnight camp were in very poor shape, with holes punched through most of the walls. While at Camp Barker, the members put up new outside walls on ten cabins, laid the cement underneath five council fire rings and subsequently built the fireplaces atop these cement slabs, cleaned out the inside of all the cabins, cleared rocks from the athletic fields, and erected soccer goals and a softball backstop. Epsilon Zeta donated \$1000 of its own funds toward the materials and supplies needed for this project. They anticipate returning one weekend over the summer and again the next academic year to do further work at this camp. You can contact Epsilon Zeta at Alpha Phi Omega, Room 235, Rensselaer Union, Rensselaer Polytechnic Institute, Troy, NY 12181.