



# Torch and Trefoil

## OFFICIAL CALL

### Fourteenth National Convention Alpha Phi Omega

Greetings to all officers, advisors, active members, life members, alumni and pledges of Alpha Phi Omega:

Pursuant to the action of the Thirteenth National Convention and the referendum by chapters, and in accordance with Article IX, Section 4, of the National Constitution, I hereby call the Fourteenth National Convention of Alpha Phi Omega to be convened in the City of Long Beach, State of California, August 28, 29 and 30, 1956.

All chapters are asked to comply with Article IX, Section 1, of the constitution in electing official delegates to attend and to vote on behalf of the chapter.

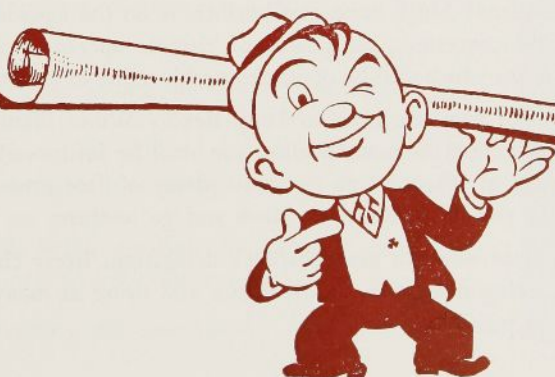
This convention, which is the supreme authority of the fraternity, is composed of two delegates from each chapter and the members of the national executive board. Each chapter represented shall have the power to cast two votes on every legislative question. Each member of the national executive board present shall have the power to cast one vote. A quorum to do business shall consist of two-thirds of the delegates assembled, and an affirmative vote of a majority of the delegates constituting a quorum shall be necessary to pass a measure.

All members of Alpha Phi Omega are invited to attend this convention and shall be extended all rights and benefits of the meeting, except that only the official delegates shall have the privilege of voting and of speaking from the floor during a legislative session. Visitors are also welcome.

Names of the official delegates elected by the chapters should be sent to the National Office in advance for purposes of committee and program assignments. These should be reported on forms which will be made available to the Chapter Presidents.

This convention shall officially open at 9:30 a. m., August 28, and close at 12 noon, August 30, 1956.

*E. R. Wisborough*  
National President.





## TORCH and TREFOIL

Volume 31, Number 1

January, 1956

Issued regularly eight times a year, monthly  
October through May.  
Subscription price \$1.00 a year

Entered as second class matter February 5,  
1938, at the post office at Kansas City, Mo.,  
under act of March 3, 1879. Office of publica-  
tion, 419 Columbia Bank Bldg., Kansas City,  
Missouri.

Printed by

Smith-Grievens Company, Printers & Lithographers  
Kansas City, Missouri

National Officers of  
Alpha Phi Omega

M. R. Disborough...Louisville, Kentucky  
*National President*  
George F. Cahill...Cincinnati, Ohio  
*National First Vice President*  
Irwin H. Gerst...Hawthorne, California  
*National Second Vice President*  
E. Ross Forman...Philadelphia, Pennsylvania  
*National Third Vice President*  
Joseph Scanlon...Yakima, Washington  
*National Treasurer*  
George H. Charno...Kansas City, Missouri  
*National Legal Counselor*  
A. G. Spizzitri...Kansas City, Missouri  
*National Editor*  
Sidney B. North...Kansas City, Missouri  
*National Secretary*

## Past National Presidents

Frank R. Horton...Bangor, Pennsylvania  
Dr. H. Roe Bartle...Kansas City, Missouri  
Dean Arno Nowotny...Austin, Texas  
Prof. Daniel Den Uyl...West Lafayette, Ind.

## National Executive Board

The Officers, Past National Presidents,  
and

Manfred O. Aws...Minneapolis, Minn.  
Prof. Harry C. Barnett...East Lansing, Mich.  
Dr. Glenn R. Barr...Oxford, Ohio  
Dr. R. H. Bolyard...Lafayette, Louisiana  
Prof. R. J. Bradshaw, Jr...Chattanooga, Tenn.  
Joseph A. Brunton, Jr...New Brunswick, N. J.  
C. J. Carlson...Riverside, California  
James G. Evans...Niceville, Florida  
Benjamin F. Fay...Philadelphia, Pa.  
Rev. J. J. Higgins, S.J...E. St. Louis, Ill.  
Dr. Lawrence L. Hirsch...Chicago, Ill.  
Stephen J. Horvath...DeKalb, Ill.  
Stanley Levingston...Ruleville, Mississippi  
Dr. Henry Miller...Huntington Station, N. Y.  
Rev. Robert J. Payne...Cos Cob, Conn.  
Dr. H. F. Pote...Scarsdale, N. Y.  
William S. Roth...Raleigh, N. Carolina  
Dr. Max A. Schneider...Buffalo, N. Y.  
Prof. Kent D. Shaffer...Pittsburgh, Pa.  
James W. Thomas...Arcadia, California  
Joe Paul Tupin...LaMarque, Texas  
Dr. Ray O. Wyland...Tujunga, California

## National Publications Committee

A. G. Spizzitri, *Chairman*

Rev. Robert J. Payne	Manfred O. Aws
Stephen J. Horvath	Joe Paul Tupin
Dr. Max A. Schneider	Frank R. Horton

## Of Thee I Sing...

C. J. Carlson, member of the National Executive Board, was recently the subject of a personal interest story in the Riverside Press. Said the Press, "Carlson is a man who has always found time to do the important things in life." Currently he is serving as president of the Riverside Council, BSA; and at the recent AΦΩ Sectional Conference at San Jose, California, a newly created Alpha Phi Omega C. J. Carlson Achievement Award was unveiled. Our compliments to Irwin H. Gerst and James W. Thomas for instigating this award which will be given to the chapter having the best attendance at each conference in that section.

Gary Sukow, President of Lambda Epsilon Chapter of AΦΩ, has the honor and responsibility of serving as editor of the campus weekly at St. Cloud State Teachers College.

Delmer H. Wilson, Past National Treasurer of AΦΩ, has succeeded Dr. Harold F. Pote as Director of the Division of Personnel, Boy Scouts of America. Brother Wilson assumed this post January 1, 1956.

James Waters, a pledge of Delta Kappa Chapter at Emory University, has been elected by the Order of the Arrow, national organization of honor campers of BSA, as its National Conference Chief for the fortieth anniversary conference to be held in August at Indiana University. Two Deputy National Conference Chiefs for the Order of the Arrow conference are affiliated with AΦΩ—Bill Posey of Epsilon Rho Chapter at Eastern Washington College of Education and Gary Gloster of Delta Omicron Chapter at Wabash College. James Feil of Lambda Chapter, University of Kansas, is Administrative Assistant to the National Secretary of Order of the Arrow for the forthcoming conference. The National Secretary is Phillip W. Robins, an alumnus of Kappa Theta Chapter at Wake Forest College. We congratulate these brothers upon the fine leadership they are giving in the Order of the Arrow.

## NEW LIFE MEMBERS

Two more brothers have subscribed for Life Membership in Alpha Phi Omega since the previous list was published. We welcome:

James L. Compton, *Gamma Xi*Robert James Hilliard, *Gamma Alpha*

## ON OUR COVER

It's California in '56.

The call has been issued for our Fourteenth National Convention. How about your plans? Much important business is on the agenda, training sessions will be held concerning all phases of chapter operation, as well as several special features which will be of immeasurable value to all chapters represented.

And have you ever been to Long Beach? Wow! Plenty of things to do (and as convention plans materialize, you shall be informed), plenty of things to see, plenty of places to go . . . and plenty of free time in the convention schedule for you to do them, see them and go to them.

Start plans now for your chapter's delegation. Every chapter should have at least a voting delegation in attendance and bring as many additional representatives as possible.



## THE DWIGHT D. EISENHOWER CLASS

**A Report by**  
**Sidney B. North**  
**National Secretary**



**Dwight D. Eisenhower**

Hearty congratulations to chapters upon strong pledging in the Fall term in our nationwide Dwight D. Eisenhower Class. Pledge applications received up to the end of December total 1,798.

This fine growth in manpower in Alpha Phi Omega is bringing a corresponding increase in service accomplishments. In the mail daily comes news of chapter services, and the reports given by delegates at sectional conferences have also shown outstanding service being rendered by chapters from coast to coast.

A parchment scroll was sent early in December to each Chapter President on which all new members initiated in the Eisenhower Class are asked to sign. Each scroll should be returned to our office when all signatures have been affixed. When each scroll arrives we issue special identification cards for all new members who have been initiated in the Fall group.

The scrolls from all chapters are to be bound in an attractive folder to be presented to President Eisenhower as a memento of this pledge class.

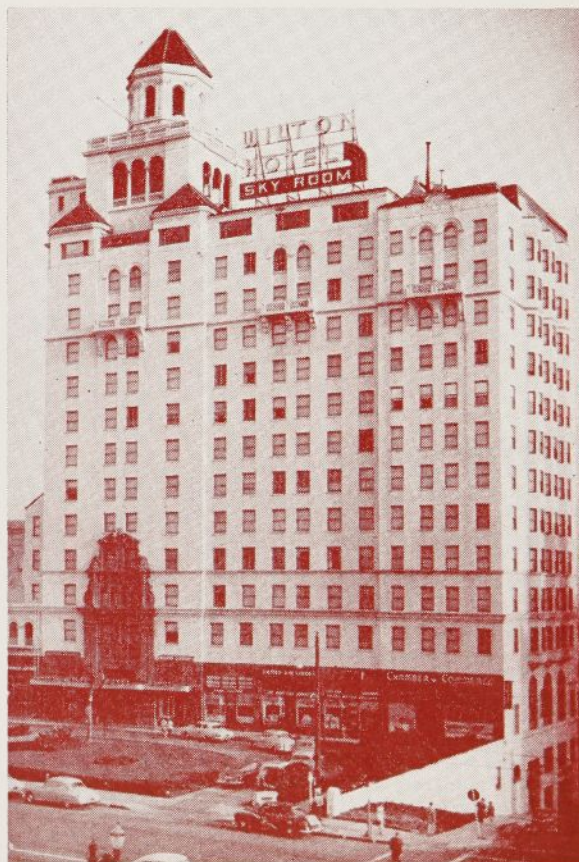
This dedication has attracted wide attention among educators, Scouters and students. Our compliments are extended to all chapters which have participated in this dedication.

## CONVENTION PLANS IN FULL SWING

At the recent Pacific Coast Sectional Conference, delegates from the California chapters developed further plans for our National Convention to be held at Long Beach, August 28 to 30, 1956. Brother Irwin H. Gerst, Arrangements Chairman for the convention, has announced appointment of nine host committees. These are: Registration and Reception Committee—Alpha Kappa Chapter, University of Southern California. Facilities Committee—Epsilon Chi Chapter, Los Angeles City College. Banquet Committee—Gamma Gamma Chapter, University of California. Luncheon Committee—Kappa Sigma Chapter, Sacramento State College. Entertainment and Publicity Committee—Lambda Mu Chapter, Los Angeles State College. Exhibits Committee—Chi Chapter, University of California at Los Angeles. Supplies Committee—Iota Pi Chapter, City College of San Francisco. Sergeant-at-Arms Committee—Gamma Beta Chapter, San Jose State College. Ritual Committee—Greater Los Angeles Area Alumni Chapter.

As voted by ballot among all chapters throughout the nation last Spring, the facilities of the Wilton Hotel in Long Beach, California, have been engaged for our convention. The hotel is pictured at right. It is ideally located. It is on the "main drag" and yet just back of the hotel is the beautiful Pacific Ocean with beach available to our delegates. The meeting rooms are also fine for our sessions.

You'll enjoy attending this convention!





## A Feature Project - - -

## HEY, RUBE, IT'S CARNIVAL TIME

By Bill Cook

President, Gamma Psi Chapter  
University of Minnesota

Have you had a Campus Carnival? Here is one success story. Don't be alarmed if there aren't 20,000 students on your campus—the same thing can be done, on a proportionate scale, on almost any campus.

CAMPUS CARNIVAL AT THE  
UNIVERSITY OF MINNESOTA

Campus Carnival is the largest student activity at the University of Minnesota, even outshining the vast activities of Homecoming. A carnival on a campus the size of Minnesota (enrollment is now over 20,000) is larger in scope than one might think. Between sixty and seventy campus organizations sponsor the shows and concessions which make up the carnival, which is held in the University's mammoth Indoor Sports Arena (floor space of 120,000 square feet). Attendance for the two-night affair averages 15,000. The profits from the carnival are allocated to organizations within the university community (Bureau of Loans and Scholarships, SPAN, Freshmen Orientation, etc.). A resume of past financial statements is tabulated below:

	1949	1950	1951	1952	1953	1954	1955
Gross Income	\$7,475.67	\$14,147.40	\$10,906.77	\$8,595.93	\$8,170.95	\$10,983.07	\$12,157.52
Total Expenses	6,078.79	9,795.18	6,840.57	5,718.90	5,190.90	6,719.51	6,594.94
Net Income	1,396.88	4,352.22	4,066.20	2,877.01	2,980.05	4,263.56	5,662.58

## Total Seven-Year Profit—\$25,598.50

In 1948, when the University of Minnesota carnival was in the incubation period, Gamma Psi Chapter decided it was the type of project that is harmonious with the three-fold purpose of AΦΩ—Leadership, Friendship, and Service. Possibilities in each of these fields are unlimited in a project of this nature. So it was that AΦΩ sponsored the first Campus Carnival at the U. of M. in the Spring of 1949. Every year since then, with the exception of 1953, Gamma Psi has accepted the sponsorship of the carnival. The requirements imposed upon the chapter are tremendous. An estimated 4,000 man-hours are devoted annually to this one project by Gamma Psi Chapter which averages fifty to sixty members.

Preparations begin many months before the carnival with lining up prizes, publicity, group participation, negotiations with the University departments, etc. By the middle of March group participation is fairly well settled and the flow of information from the Carnival Committee to

the participants is intensified through general meetings, correspondence, and the hundreds of day-to-day contacts made through the carnival office. During April the various carnival committees complete their preparations in anticipation of the opening night late in April. The Monday before Carnival all operations are moved to the Indoor Sports Arena for a final concentration of preparations. During this week the Arena is prepared for the participating groups to set up their show tents and concessions. By Friday, the opening night, the Arena has been transformed into a typical scene: a myriad of canvas, poles, sawdust, noise, swarming people, and, of course, pretty legs. The last week before carnival and the two nights of carnival requires every available hour of Gamma Psi's time.

Our Campus Carnival is directed under the following organization:

General Chairman, Office Committee, Promotions Committee, Business Committee and Arrangements Committee. The chart at top of next page shows the many responsibilities.

At immediate right is shown a representative of one participating group at Minnesota's Carnival receiving two awards for their show; and with him are an announcer for the campus radio station, WMMR, and James Strand, contest chairman for Gamma Psi Chapter.

In the second picture to the right, "Honey" Silverman, 1955 Campus Carnival Queen at Minnesota, is at left, and with her are the queen runner-ups and Governor Milward L. Simpson of Wyoming, special guest of the carnival. The State of Wyoming gave the Carnival Clown and Queen free trips. The queen went to a Wyoming dude ranch and the clown had a week's fishing trip in Canada.





PROPOSED ORGANIZATION, 1956 CAMPUS CARNIVAL

CHAIRMAN

OFFICE

PROMOTIONS

- Campus Publicity
- Off-campus Publicity
- Judging
- Special Promotions

BUSINESS

- Accounting
- Tickets
- Purchasing

ARRANGEMENTS

- Participation
- Construction and Layout
- Health and Safety
- Properties

The General Chairman works directly with the four major committee chairmen under him and is a liaison with the University.

The office committee serves a staff function by operating the carnival office. Correspondence, general mailing, and flow of information are all channeled through this committee.

The promotions committee has jurisdiction over all promotional aspects of the carnival. The Promotions Chairman utilizes four committees. The campus publicity committee handles publicity through the campus paper

and radio station. It also is responsible for posters, the Carnival Clown Contest, and all other publicity gimmicks aimed at the campus. The off-campus publicity committee arranges for local newspaper, radio and TV coverage. It also organizes the Carnival Parade, runs the opening day of carnival. The parade is directed through the loops of Minneapolis and St. Paul and also through our campus and the campuses

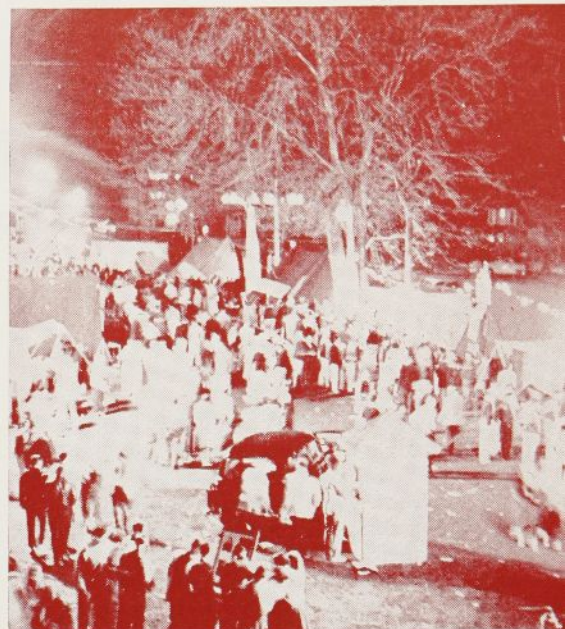
(Continued on page 10)

Shown in the picture below is Minnesota's carnival office, with trophies displayed on table. Holding a trophy is Stanley Sorokurs of Gamma Psi Chapter.

The Community Chest Carnival at University of Connecticut is held outdoors. The upper picture at right shows part of the grounds at a late hour after part of the huge crowd had departed.

The picture at immediate right shows one of the midways at Minnesota's 1955 carnival.

At lower right is a view from the Connecticut carnival showing the booth judged as the most original. The carnival conducted by Delta Sigma Chapter annually includes more than forty games and shows sponsored by campus organizations and brings in gross income of more than \$5,000.00.





## Leadership Feature - - -

# NUMBER 1 MAN

## That's You, Mr. President

By Stephen J. Horvath

Past President, Eta Chapter,  
Member of National Executive Board

Mr. President—Please accept our congratulations, very sincere ones, too. You have been elected for many reasons. No doubt you have a knack of making people like you and of getting them to do pretty much what you want them to do. Surely you're probably very popular with people. These are some of the reasons why you were elected:

This office will bring to you a great deal of honor, glory, and admiration from many people. This is fine and you no doubt feel confident and respected, but it also brings to you many duties and responsibilities. You are now working for the good of the chapter and Alpha Phi Omega.

As the number one leader you will soon realize that the success or failure of the chapter is to be in your hands.

It is up to you to keep the spirit of fraternity very high. You must see that every undertaking of the chapter is conducted according to the policies of the fraternity and the college.

Remember, good judgment on your part will avoid some embarrassing situations for the chapter and its members. They may wish to attempt some project contrary to school or community policy. Rather than let the project go on, it's your job to dissuade them. This must be done tactfully and then guide them toward a better project. This will in many instances avoid friction between the chapter and the administration or other campus organizations.

As president, one of your functions is to strengthen weak members, giving them a chance to show what they can

do. You may find some hidden talent in the quiet guy who sits in the back row. Don't be afraid to place yourself in the shoes of an ordinary member. Wouldn't you work harder to make a project a success if for once you could be on a committee? Wouldn't you like to do something for the benefit of the chapter? A big *yes* is no doubt your answer, so, Mr. President, give all the members a chance. The typical AΦΩ chapter has so many projects that there is room for all to serve. Put the members to work and you'll have no trouble carrying out the ideals of Alpha Phi Omega.

With the many "pats on the back" there will also be many "slaps in the

face." Why didn't you contact the Dean? How come the pledge fees weren't sent? Whose fault was it? Well, just guess, right you are—it was your fault. The best advice is found in the title of a popular newspaper feature, "Grin and Bear It." If you don't want all the trying situations to ruin your mental balance, learn to laugh them off.

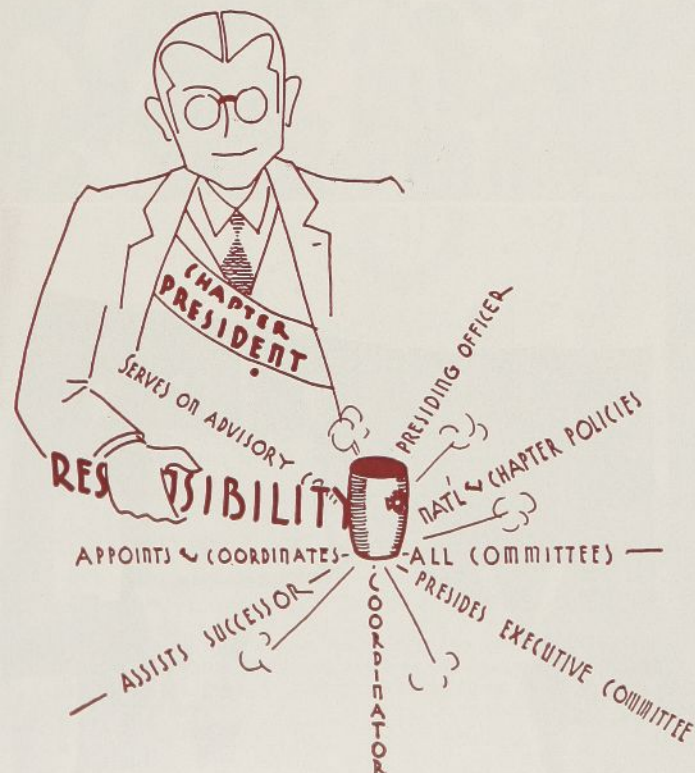
Besides laughing them off, there is much you can do so they will not reappear. One is to plan ahead. Get together with the Executive Committee and Advisors and plan the year's calendar ahead of time. Make sure there is adequate time to plan and carry out each activity. This will allow you to consider details which may have been overlooked.

So you've planned well in advance, now for the committee heads. Going to use Tom again? Why not, he is always volunteering and can do a good job. Let's not use the same members over and over again. Let's get some new committee heads. Maybe it would be wise to call on someone who can give all of his attention to the activity. With a little help from you and other "old-time chairmen" they can do a real bang-up job.

Before we go on and discuss some of your tools, remember you have to cooperate to the fullest with other campus organizations. Get to know other presidents and members. Congratulate them when the group performs admirably. Use them to aid in projects or other activities. Ask the Art Club for aid in dance decorations, the Home Economics group to serve at your banquet. Since you can use their help, aid them whenever possible. You'll want to do it because the spirit of AΦΩ is service.

As a leader here are a few hints to aid you:

(Continued on page 11)







### Memorial Camping Unit

Last winter MIT lost its first athletic director and ALPHA CHI CHAPTER lost a fine advisor when Professor Ivan J. Geiger died of a heart attack. In memory of Professor Geiger, the chapter with the approval of the Cambridge Council, BSA, decided to use the proceeds of its Ugly Man Contest to construct a Geiger Memorial Camping Unit at Camp Quinapoxit, the Cambridge Council's camp in New Hampshire. This was reported by Philip Banks, Corresponding Secretary.

### Renovate Building

IOTA KAPPA CHAPTER is giving the old observatory on the hill a new inside appearance. Members are painting the interior and plan to lay a tile floor in the telescope room. Al York is chairman of this project. This is reported in the *Bucknell University* newspaper.

### Campus Chest Chairman

The December issue of "Dragon Tales," the newsletter of ZETA THETA CHAPTER, announces that Bill Hansell, Campus Chest Chairman for the winter term, has fine plans for the campaign including (1) better education of the student body of *Drexel Institute of Technology* as to the purposes and goals of the Campus Chest; and (2) section representatives who will be thoroughly grounded in these purposes and goals and can publicize them among classmates through daily contact.

### Assist at Eagle Court of Honor

Members of BETA EPSILON CHAPTER served as ushers for the Eagle Scout Court of Honor of the Wapsipinicon Area Council, BSA, held November 6, 1955, in the auditorium of *Iowa State Teachers College*. This is reported by J. D. Armstrong, Presidential Representative.

### Safety Campaign

IOTA CHI CHAPTER at *Northern Michigan College* has conducted a safety campaign which was brought to the students in the form of a college assembly. The entire project was directed at the students who own automobiles. A speaker was secured from the Michigan State Police and an excellent film was shown. This was reported by John D. Slapp, Past Secretary.

### Big Contest at Emory

DELTA KAPPA CHAPTER collected \$3,147.26 in its Ugly Man Contest for the Community Chest. This amount is about ten times larger than ever before collected at *Emory University*. Other projects of the Fall term have included the campus elections, Parents' Day, care of bulletin boards and assisting with Religious Emphasis Week. This is reported by Cecil Wilson, Past President.

## CERTIFICATE OF APPRECIATION PRESENTED TO MRS. DANIEL DEN UYL



At the Central Sectional Conference held at Purdue University, a Certificate of Appreciation as voted by our National Executive Board was presented to Mrs. Daniel Den Uyl for "lending" Dan to Alpha Phi Omega for the four years he served as National President (1950 to 1954). Shown in the picture, left to right, are M. R. Disborough, National President; Sidney B. North, National Secretary; Mrs. Den Uyl; Professor Daniel Den Uyl; and Dr. Lawrence L. Hirsch, member of the National Executive Board. The presentation was made at the opening session of the conference, November 26, 1955.

A Certificate of Appreciation was also presented to Dr. Frederick L. Hovde, President of Purdue University, in expression of gratitude for Dan's fine service and leadership in Alpha Phi Omega.

Past President Dan was very grateful for the presentation of these two certificates in recognition of his service.



# Newsletter Clips

From the newsletter of Gamma Phi Chapter, Western Michigan College.

## A Job for Alumni

When you were inducted into Alpha Phi Omega, your Scouting Advisor explained two of the fields of service for the men of  $\Lambda\Phi\Omega$ : (1) Service to youth and community and (2) Service to our nation as participating citizens.

Most of you have now left college.

You are working in your chosen field of endeavor. You have a great responsibility to your church, your community and, above all, to your family.

If you were asked, "What is a Scout Troop?" you might answer: "A troop is a group of boys—eleven to seventeen years of age—who are registered with the Boy Scouts of America." That is partially correct. You might add, "Oh, yes, a troop also has a Scoutmaster." Again, you are right as far as you have gone. A Scout Troop is a group of boys *plus* their leaders *plus* a group of responsible citizens serving as Troop Committeemen, *plus* the backing of a church, a service club, or some other group interested in providing Scout training and program for their boys.

There is a job in Scouting for YOU. During the next twelve months there will be approximately 7,500 new units organized with 95,000 additional adults needed to supervise these units. Will you help?

It has been said: "The service you give is the rent you pay for the space you use in the world today."

—Ken Poulson

## Aid New Groups

Bay Area Alumni have been assisting the new group at San Francisco State College in preparation of their local constitution. The group has also assisted toward organizing the new preparatory group at the University of San Francisco. This is reported in " $\Lambda\Phi\Omega$  Bridger," chapter newsletter.

## SWISH --- AND IT'S DONE AND IT'S FUN



In an excellent service to youth, Lambda Theta Chapter at Columbia University recently painted the interior of the Manhattanville Community Center building. And several non-members who assisted are ready to pledge next semester.

"The Center is the only place for the kids of the neighborhood to go for fun and instruction in certain skills from fingerprinting to basketball to photography. Its value is inestimable for it serves not only as a recreation place but also as a refuge for youngsters from two years of age up who can't go home because their parents both work, and it provides a place for teenagers to congregate in a wholesome manner instead of hanging around with gangs that dominate the area." That's a vivid description of the Center as given by Leonard I. Fintzy, Publicity Chairman of Lambda Theta Chapter.

The chapter enthusiastically accepted the job of painting the interior of the building. At far left, "because of shortage of ladders," Don Roth, service vice-president, uses the able backs of Jerry Present and George Bersutzky as a lift to reach the tops of walls.

In picture at immediate left above George rushes to the aid of Barry Cooper when paint gets in his eye (anything to get out of work.)

With all clowning aside, the lower picture shows members and pledges painting the walls of the fifth floor hallways of Manhattanville Community Center. Left to right are Howie Allen, Recording Secretary; George Bersutzky; Steve Tobin (back of ladder) Bob Eisenstein, Ed Aqua, Charlie Levi, Corresponding Secretary; Barry Cooper (on ladder), and Jerry Present.

This painting project has led to several members volunteering to work at the center to give leadership in such fields as boxing, typing, crafts, etc. The men of Lambda Theta Chapter have seen the need and heard the call and they are rushing to answer them . . . another fine service of Alpha Phi Omega.





### Busy at Western Michigan

GAMMA PHI CHAPTER at *Western Michigan College* has conducted several new projects this past Fall in addition to the traditional ones carried over from last year. Assistance to new students included information booths and distribution of cards to help alleviate the bookstore rush. Evening assistance at the infirmary is continuing after its successful start last year. Ushering is being handled at college functions. Eight large bulletin boards have been constructed for use on the campus. The chapter gathered wood for the Homecoming bonfire on October 21, and plans for an office space and a lost and found department are in the offing, with the Ugly Man Contest coming up in the Spring semester. This is reported by Jim Bowen, Projects Committee.

### Chapter Newsletter

DELTA BETA CHAPTER at the *University of Oklahoma* has revived its chapter newsletter under the name of DeBee. The issue for December, 1955, under the editorship of Monty Mann is excellent. It tells about the participation of chapter delegates at the Southwest Sectional Conference and mentions plans for future projects. We sincerely congratulate Delta Beta Chapter upon its fine newsletter.

### Another New Chapter . . .

### LAMBDA RHO CHAPTER AT AUGUSTANA COLLEGE



At ceremonies held November 6, 1955, on the campus of Augustana College, Rock Island, Illinois, this fine group was initiated as Lambda Rho Chapter of Alpha Phi Omega. Officiating was Dr. Lawrence L. Hirsch, member of our National Executive Board, ably assisted by Stephen J. Horvath, also a board member, and Rev. Frans Victorson and Glen E. Brolander, Presidential Representatives. The ritual was conducted impressively by the ritual team of Eta Chapter of Northern Illinois State College. We sincerely welcome this new chapter into our brotherhood.

### Christmas Lights

ZETA UPSILON CHAPTER lighted the *Boston University* plaza with torch lights for the second annual Christmas-Hanukkah Sing sponsored by the Brotherhood Council, interreligious group of the university. Several musical organizations participated and refreshments were served in the Commons following the program. The chapter also inserted Holiday Greetings in the campus newspaper, signed by all officers and committee chairmen, extending good wishes to all at the university. This is reported by David J. Hines, Treasurer.

### Homecoming Entrance Gate

IOTA SIGMA CHAPTER at *Midwestern University* erected the Homecoming entrance gate this past Fall, a well-planned and executed operation appreciated by both the student body and alumni. Numerous other projects, reported by Captain James T. Crawford, Chairman of the Advisory Committee, include sponsoring the Homecoming dance, planting trees on campus as part of the college's landscaping program, making a financial contribution to the campus beautification fund, assistance to the Red Cross during the severe floods in Wichita Falls, painting yellow parking zones around the university and cooperation with the Boy Scouts.

### AWARD IN TAU CHAPTER'S SCOUT SWIM MEET



Wallace Sterling (left), President of Tau Chapter, is shown congratulating Mr. Everett Parker whose troop won the Alpha Phi Omega swim meet at the University of Florida.



1956

## A Challenge to Us All

In these often hectic and chaotic days, the words which came from the pen of Robert Louis Stevenson seem most appropriate. He entitled the piece "Christmas Sermon." But in the opinion of many it fits, even more significantly, into a thought for a New Year.

So let's bear in mind these beautifully expressed ideas.

"To be honest, to be kind—to earn a little and to spend a little less, to make upon the whole a family happier for his presence, to renounce when that shall be necessary and not be embittered, to keep a few friends but these without capitulation—above all, on the same grim conditions, to keep friends with himself—here is a task for all that a man has of fortitude and delicacy. He has an ambitious soul who would ask more; he has a hopeful spirit who should look on such an enterprise to be successful. There is indeed one element in human destiny that not blindness itself can controvert: whatever else we are intended to do, we are not intended to succeed; failure is the fate allotted. It is so in every art and study; it is so above all in the continent art of living well. Here is a pleasant thought for the year's end: Only self-deception will be satisfied, and there need be no despair for the despairer . . .

"When the time comes that he should go, there need be few illusions left about himself. Here lies one who meant well, tried a little, failed much. Surely that may be his epitaph, of which he need not be ashamed."

### DECORATION FOR RELIGIOUS EMPHASIS WEEK

Men of Beta Delta Chapter are shown decorating the stage for Religious Emphasis Week at East Texas State Teachers College. Left to right are Jimmy D. McClinton and Robert R. Mills, then pledges; John R. Fraser, Chairman of the Decorating Committee, and Ross M. Morriss, then Vice-President of Beta Delta Chapter and Vice-President of the Student Council. Numerous chapters of APO assist in various ways with Religious Emphasis Week and we recommend this as a very worthy project.



### Two Camporees on Campus

BETA DELTA CHAPTER has sponsored two Scout camporees on the campus of *East Texas State Teachers College* and its program for the past year has included numerous other projects. The group served on the reception and program committees for the Future Teacher of Tomorrow Week, served as guides for the Homecoming parade, helped in the March of Dimes campaign, assisted with student elections, sponsored an Easter Egg hunt for 125 children, conducted a very successful Ugly Man contest and furnished the decorations for the stage for Religious Emphasis Week. The theme of the week was Reason, Research and Revelation. This is reported by James Kenneth Ingram, Past President.

### Paint a House

IOTA UPSILON CHAPTER at *Slippery Rock State Teachers College* has painted the home of a needy family as one of its service projects. The group helped sponsor two blood drives with the townspeople for Deshon Veterans Hospital and assumed responsibility for swimming instruction for Scouts of the surrounding areas, operates the school elections and conducts numerous other projects in its well-rounded program. This news is from Frederick R. Van Dyke, Past President.

### HEY, RUBE

(Continued from page 5)

of five nearby colleges. The judging committee sets up an award system for the "best events," "most money events," and an all-participation trophy. Each show and concession is judged by a group of local dignitaries. Nine trophies are awarded to participating groups on the last night of carnival. This presentation along with the awarding of a new car climaxes the closing night. The special promotions committee handles such gimmicks as the car contest in a special effort to promote attendance.

The Business Manager is responsible for all financial transactions of the carnival. The accountant and his staff keep accurate records of the thousands of dollars which pass through our hands annually. The Ticket Manager handles the sale of general admission and concession tickets and the issuing of passes. The large personnel involved in this operation is under his supervision. The Purchasing Agent



serves also as our comptroller because all vouchers signed by carnival must pass through his hands. In this way a close check is kept on the carnival budget.

The Arrangements Committee is the backbone of carnival. Within this area all physical arrangements with the University are handled. Over \$2,500 is spent each year for the use of university facilities and employees. A very careful eye must be kept on this large outlay of cash. The arrangements are conducted through four committees. The participation committee makes the original contact with the participating groups and keeps in touch with them until application is made for space in the carnival. When the deadline for carnival entrance is reached the Construction and Layout Committee takes over. They lay out the ground plan of the Arena and then supervise all construction. The Health and Safety Committee arranges for standby nurses and emergency truck, proper maintenance of fire lanes, fire-proofing, etc. The Properties Committee supervises the loaning of all university property used.

The committees outlined above are manned 100 per cent by members of  $\Lambda\Phi\Omega$  with the exception of secretaries, ticket-takers, etc., who are called in from other groups during the week of carnival.

Looking at the whole picture it seems impossible that a group of our size could ever run such an extensive project. But year after year carnival has come and gone without serious effects upon the health and scholastic record of Gamma Psi Chapter members.

We feel that Carnival gives tremendous benefits. It is the only event during the year where so many campus organizations join hands in one unified effort. In this respect it is a great human relations project for a campus as diversified as ours. Most of the profits are turned over for use as scholarships. Because there are no "strings attached" to this money it is extremely useful.

The benefits Gamma Psi Chapter derives from Carnival are innumerable. In no other project do we develop the "esprit-de-corps" which is evident during carnival. The leadership ability developed could never be measured. The extreme amount of coordination and executive ability displayed by carnival personnel continues to amaze us each year. In short we feel that Cam-

pus Carnival is one of the greatest things that Gamma Psi Chapter has ever been associated with. We feel deeply grateful and proud to be a part of Campus Carnival.



SAY,  
DID YOU  
KNOW?

—In the list of college men's organizations in the World Almanac, Alpha Phi Omega is the only one under the "Service" classification. This is not only an honor but also a real responsibility.

—An application for charter has been received from Salem College, Salem, West Virginia. Data concerning it has been sent to all chapters for voting.

—A new national distinguished service key has been established to be awarded only at national conventions.

—The National Convention, to be held in Long Beach, California, is important to your chapter. Attendance by your delegates August 28 to 30, 1956, can be a big boost to your chapter activities next year.

—The TORCH AND TREFOIL offers opportunity for you to tell others about your chapter projects. You are invited to send news items and pictures.

—The Spring semester is an excellent time to pledge new men. It is recommended a strong pledging program be conducted in the next few weeks for initiation before the close of the Spring term.

## NUMBER 1 MAN

(Continued from page 6)

1. Practice self-control at all times by remaining calm in times of confusion and emergency. You may be disturbed but keep it inside.

2. Accept criticism and disappointment graciously. Be a good sport when it is hard and take it with a smile.

3. Get out and meet people. Go to athletic events and other campus activities.

4. Remember that some events will not succeed. Babe Ruth didn't hit a home run every time at bat.

5. Last, but not least, remember why you are in college. A good leader leads academically, too. Proper allocation of time for studies is important. No group follows a poor leader unless they, too, are poor students. No Alpha Phi Omega chapter is known for this reason. Let's keep it that way.

We have made it sound so simple and have put everything on your shoulder, Mr. President. But as the contractor has tools with which he builds his houses, you have tools to help build your chapter.

In your presidential tool box you will find such tools as the National and Chapter Constitutions, get to know and use them; the Manual of Administration (free for the asking from the National Office), which is a guide prepared to serve the chapter's officers in carrying out their responsibilities as it contains tested experiences of many chapters and national leaders; TORCH AND TREFOIL, our national magazine, which is full of helpful suggestions; the National Officers, National Executive Board, and Presidential Representatives, feel free to call on these men who are at your service. Their experience and sound advice will be of assistance in many instances. Another small, but useful tool, is a book on Parliamentary Procedure. Use this tool not as a hindrance but as a help in making a meeting run smoothly and on time. You should always have the word "Thanks" and "Congratulations" in your tool box. Use them often, no matter how small the job is.

To summarize your main duties, Mr. President, are:

1. To represent the chapter officially.
2. To spark the group.
3. To use wise judgment at all times.
4. To preside at all meetings.
5. To be overseer of all activities.

There are many more responsibilities but the biggest is doing the best job possible. You are not only guiding your future but that of your chapter.

Remember Shakespeare's words and you cannot go astray:

"To thine own self be true—  
And it must follow as the night  
the day  
Thou canst not then be false to  
any man."



# BULLETIN BOARD

## REGISTRATIONS

Our fraternity policy concerning membership registrations calls for the chapter to mail the active applications and fees to the National Office ten days prior to the initiation ceremony . . . and to receive the identification cards in time to be presented in the ritual. Our office is giving immediate service in issuing the cards.

This arrangement benefits every chapter. It enables you to put registrations on a business-like basis . . . and it gives new members the privilege of receiving their credentials at the very time the ceremony is held.

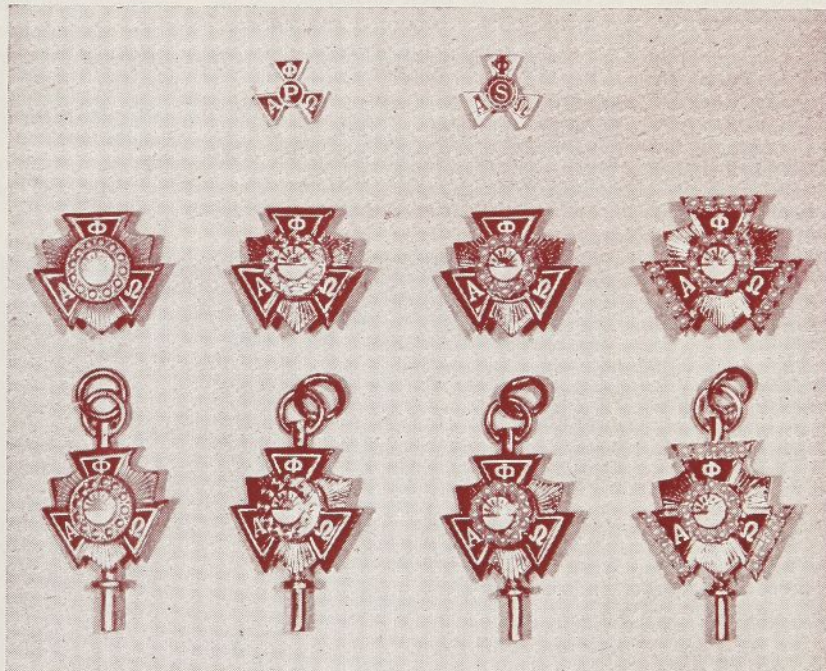
## SPRING DEDICATION

It is recommended that again each chapter dedicate its Spring 1956 Pledge Class in honor of a local leader whom the members deem merits this recognition.

In your chapter there is undoubtedly someone whose service and leadership and devotion stands out above all others for the past year . . . some advisor, college official, Scouter, or other leader who has given particularly outstanding service in Alpha Phi Omega.

This dedication offers opportunity to say "Thanks" in a big way for exceptionally fine service.

Select Your  
**ALPHA PHI  
OMEGA  
INSIGNIA**  
from this  
list



Official Jeweler

**L. G.  
BALFOUR  
COMPANY**

Attleboro,  
Mass.

Pledge button (shown above at top left).....	.35
Service button (top right).....	.35
Standard badge, gold plated (extreme left, middle row).....	2.50
Standard badge, 10K (second from left, middle row).....	6.50
Standard badge, crown set pearl plain arms (third from left, middle row).....	13.25
Standard badge, crown set pearl center and arms (extreme right, middle row).....	24.25
Standard key, gold plated (extreme left, bottom row).....	3.25
Standard key, 10K (second from left, bottom row).....	8.50
Standard key, crown set pearl center plain arms (third from left, bottom row).....	15.00
Standard key, crown set pearl center and arms (extreme right, bottom row).....	26.00

(To all prices add 10 per cent federal tax, and any state or city tax which applies in your locality)  
Official order blanks are available from your Chapter Treasurer or from the National Office.