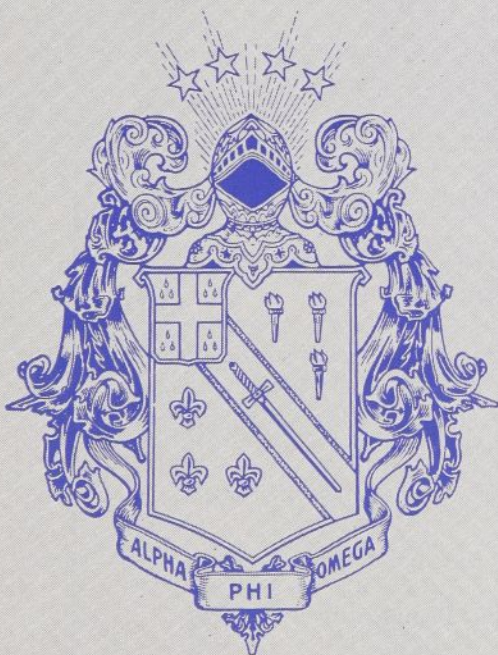


# TORCH AND TREFOIL



MARCH, 1962

**HON. H. ROE BARTLE**

*Honorary Chairman*

1962 NATIONAL CONVENTION



## TORCH and TREFOIL

Vol. 37, No. 2

MARCH, 1962

### National Officers of Alpha Phi Omega

William S. Roth . . . . . Raleigh, N. C.  
*National President*

E. Ross Forman . . . . . Philadelphia, Pa.  
*National First Vice President*

Dr. Lester R. Steig . . . . . Palo Alto, Calif.  
*National Second Vice President*

Rev. Frans A. Victorson . . . . . St. Joseph, Mich.  
*National Third Vice President*

Manfred O. Aws, Jr. . . . . Milwaukee, Wisc.  
*National Treasurer*

Joseph Scanlon . . . . . Kansas City, Mo.  
*National Executive Secretary and Editor*

J. D. Armstrong . . . . . Greeley, Colo.  
Elmaar H. Bakken . . . . . New Brunswick, N. J.  
Prof. Harry C. Barnett . . . . . East Lansing, Mich.  
Dr. Glenn R. Barr . . . . . Oxford, Ohio  
Dr. H. Roe Bartle . . . . . Kansas City, Mo.  
R. L. Brittain . . . . . Auburn, Alabama  
George F. Cahill . . . . . Pittsburgh, Pa.  
C. J. Carlson . . . . . Riverside, Calif.  
M. R. Disborough . . . . . Louisville, Ky.  
Benjamin F. Fay . . . . . Philadelphia, Pa.  
Dr. Thomas T. Galt . . . . . Spartanburg, S. C.  
Irwin H. Gerst . . . . . Canoga Park, Calif.  
Zenon C. R. Hansen . . . . . Lansing, Michigan  
Robert J. Hilliard . . . . . Lubbock, Texas  
Dr. Lawrence L. Hirsch . . . . . Chicago, Ill.  
Frank R. Horton . . . . . Bangor, Pa.  
Dean Lewis N. Jones . . . . . Lubbock, Texas  
Stanley Livingston . . . . . Ruleville, Miss.  
H. Jack Mayr . . . . . Milwaukee, Wisc.  
Dr. Henry S. Miller . . . . .

. . . . . Huntington Station, N. Y.  
Sidney B. North . . . . . Evanston, Ill.  
Dean Arno Nowotny . . . . . Austin, Texas  
Dean Glen T. Nygreen . . . . . Kent, Ohio  
Rev. Robert J. Payne . . . . . Mt. Vernon, N. Y.  
Gerald M. Plessner . . . . . St. Louis, Mo.  
Dr. Harold F. Pote . . . . . La Jolla, Calif.  
Prof. Kent D. Shaffer . . . . . Pittsburgh, Pa.  
Robert L. Slater, Jr. . . . . Chicago, Ill.  
A. G. Spizzirri . . . . . Kansas City, Mo.  
Ronald R. Turgeon . . . . . Bridgeport, Conn.  
Dr. Delmer H. Wilson . . . . .  
. . . . . New Brunswick, N. J.  
Dr. Ray O. Wyland . . . . . Tujunga, Calif.

TORCH AND TREFOIL is issued regularly seven times a year, monthly, October through May except January from Office of Publication, 1100 Waltower Building, 823 Walnut Street, Kansas City 6, Missouri. Printed by Smith-Grievess Company, Printers & Lithographers, Kansas City, Missouri. Second Class Postage paid at Kansas City, Missouri. Subscription price \$1.00 per year.

### EDITORIAL STAFF

Joseph Scanlon, Editor and National Executive Secretary. Gerald M. Plessner, Associate Editor.

## On Our Cover—

Honorable H. Roe Bartle, Mayor of Kansas City, Missouri, and National President of Alpha Phi Omega from 1931-1946, has been designated Honorary National Chairman for the 1962 National Convention, to be held in Kansas City, Missouri, December 27, 28, 29, 1962. Brother Bartle is one of America's most distinguished orators and has been Mayor of Kansas City since 1955.

1. On Our Cover—Honorable H. Roe Bartle
2. Table of Contents . . .
3. Strengthening Alpha Phi Omega . . .
4. Big Brother—Little Brother . . .
5. Theta Delta Chapter Reports—Section 22 Reports . . .
6. Whom Will You Serve?—A Founder Reminds Us . . .
7. As the Camera Sees Us . . .
- 8-9. Spotighting Chapter Activities—  
New Life Members . . .
10. Questions Frequently Asked in Alpha Phi Omega . . .
11. The 1962 Convention . . .
12. Pace-Setting Chapters . . .

### ALPHA PHI OMEGA ACCOMPLISHMENTS 1960-61 UNIVERSITY YEAR

Highlights of the National Executive Secretary's report for the 1960-1961 university year included these facts:

- The Fraternity pledged more men than in any single university year since its foundation in 1925.
- The Fraternity initiated more men than in any single year of its existence.
- The Fraternity set up 30 Service Sections across the nation, commissioned a Sectional Chairman for each one and appointed 163 Presidential Representatives to service chapters.
- The Fraternity held the best attended National Convention in its history at Philadelphia in December, 1960.
- The Fraternity's membership shared in more Training Seminars and attended more Sectional Conferences than ever before.



# National Executive Board Takes Steps To Strengthen Alpha Phi Omega

President William S. Roth presided at an excellent meeting of the National Executive Board of Alpha Phi Omega, held January 27-28, 1962, at Kansas City, Missouri.

Important actions taken were as follows:

1. The Board commended the National President and National Executive Secretary for their leadership and direction and ordered this published in Torch and Trefoil. (Note box on this page.)
2. Changed the Fraternity's fiscal year to September 1-August 31, replacing the present December 1-November 30 pattern. This will better conform to the college and university year.
3. Thanked Mr. William R. Cumerford and Cumerford, Incorporated, National Fund Raising Organization, for their survey of and recommendations regarding Alpha Phi Omega's finances. This service was provided without cost by the Cumerford organization.
4. Expressed appreciation to the Endowment Fund Committee, headed by Mr. Stanley Levingston, for its constructive conduct of this fund. Dr. Delmer H. Wilson is its treasurer.
5. Set the 1962 National Convention registration fee at \$2.00 and established the dates of Thursday, Friday, Saturday, December 27, 28, 29, 1962, for the Convention to be held in Kansas City, Missouri.
6. Expressed appreciation to Convention Coordinator Spizzirri and Program Chairman Plessner for their work on the 1962 Convention and plans to upgrade the Chapter President's position and its importance.
7. Discussed National Projects and agreed that for the balance of 1962 the principal project would be Chapter Membership development on a one-for-one basis, under which each present active would be expected to bring one additional man into membership this calendar year.
8. Discussed ways and means to protect Alpha Phi Omega's name, insignia and mark and thanked Legal Advisor Slater for his work in this field.
9. Decided there should be but one official pledge button and one official recognition button, both to be provided with a squeeze back type clasp and both to be of the size of the present large size enameled pledge pin. Authorized necessary adjustment in the cost of the Recognition "S" service pin to accomplish this. The present small size pledge button will be discontinued.
10. Authorized a National Achievement Award plan for chapters, now nearing completion under the direction of Dr. Galt.
11. Denied authorization for the use of its Alpha Phi Omega pin or crest on ceramics.
12. Recommended Roger Gorrell and Alpha Rho Chapter, The University of Texas, for Life Membership promotion.
13. Approved a national expansion goal to form. Two new chapters in each section.
14. Accepted with appreciation the report of Mr. Cahill of the success of plans for Executive Board members to provide a Memorial Pew to the memory of Past National President Daniel Den Uyl at the Covenant Presbyterian Church in West Lafayette, Indiana. The amount needed was oversubscribed.
15. Adopted the report and recommendation on Scouting relationships submitted by Mr. Bakken.
16. Received a report on the development of the National Alumni Association and adopted a Resolution requesting the Association to help protect Alpha Phi Omega's service mark, including its name, crest, insignia, etc.
17. Decided that in the light of the constructive actions taken and accomplishments, of the meeting that another National Executive Board meeting be held before the next National Convention.

Participating in the Board meeting were President Roth; Dr. Lester R. Steig, Western Vice President; Manfred O. Aws, Jr., National Treasurer; Joseph J. Scanlon, National Executive Secretary; J. D. Armstrong; Elmaar H. Bakken; Dr. H. Roe Bartle; George F. Cahill; M. R. Disborough; Dr. Thomas T. Galt; Stanley Levingston; H. Jack Mayr; Gerald M. Plessner; Robert L. Slater, Jr.; A. G. Spizzirri, and Dr. Delmer H. Wilson.

## NATIONAL PRESIDENT AND NATIONAL SECRETARY COMMENDED

*The National Executive Board of Alpha Phi Omega meeting January 27-28, 1962, unanimously adopted the following Resolution, and ordered its publication in Torch and Trefoil:*

*"The National Executive Board of Alpha Phi Omega commends President William S. Roth and National Executive Secretary and Administrator Joseph J. Scanlon for their leadership in Alpha Phi Omega. It is the sense of the National Executive Board, duly convened and assembled in Kansas City, Missouri, this 28th day of January, 1962, that it is their belief and opinion that our Brotherhood is in better shape today than it has ever been in its 37 years of dedication to Leadership, Friendship and Service on the College and University campuses of America."*



# BIG BROTHER LITTLE BROTHER CEREMONY

By DEAN LEWIS N. JONES  
and ROBERT J. HILLIARD  
Beta Sigma, Texas Technological College

## EDITOR'S NOTE:

Dean of Men Lewis N. Jones is Sectional Chairman for the Texas Panhandle and Oklahoma chapters. Dean Hilliard is his assistant.

Beta Sigma Chapter uses the Big Brother-Little Brother system for pledge training and fellowship.

The authors are experienced advisors. They are in daily touch with their own chapter and have been instrumental in establishing Nu Nu at Eastern New Mexico University at Portales and reactivating Eta Tau at West Texas State, Canyon, Texas.

Brothers, you have been appointed as big brothers to the neophytes assembled on this occasion. This privilege is not to be abused, perverted or taken lightly, but to be coveted, protected and nurtured to complete fulfillment. This neophyte is entrusted to your care and nurture. Before you assume the responsibilities of this appointment there are certain things that you should be reminded of. A true understanding and example of unselfish service to humanity is a cardinal principle that you must demonstrate to this neophyte. Only by the *good example* can he value the worth and dignity of service. Being a friend is more than acquaintanceship. A true friend exemplifies all the cardinal principles of the Scout Oath and Law. You will recall that the best way to have a friend is to be one.

The first principle of our great fraternity is leadership. A major part of this neophyte's understanding of Leadership will be reflected through you and your performance of obligations well known to you. Carry your responsibility with the greatest of dignity and earn the respect and admiration of your Little Brother. Remember, he is the most important asset Beta Sigma possesses—without him, some person will not be served, some job left undone and he will miss the *wonderful opportunities* to give of himself, expecting nothing in return.

As you counsel and guide this neophyte in his comprehension of our Brotherhood, leave no stone unturned to give him the fullest understanding of our fraternity. Make his visits with you meaningful. Review with your Little Brother his activities during the week, his progress as a pledge in work projects as well as signatures—not work and signatures for their sake alone, but as signs of his devotion to his pledge obligations. Help him with his understanding of the organization of our own chapter as well as the national organization of the fraternity. Review with him the history and background heritage which is ours, both on the campus of Texas Tech and in the national scene. Know of his academic progress, help him wherein you are able or refer him to others. Let not this neophyte sacrifice his true purpose in coming to college as he participates in our program. Let not this neophyte ever feel the need of a friend. You are his friend—first, last, and always. Serve with him and lead him in the proper path toward full active membership of Beta Sigma. Yours is a great responsibility. Do not fail him.



Robert J. Hilliard



Dean Lewis N. Jones

Will each Big Brother and Little Brother please rise.

The Big Brother is requested to place the pledge pin on either the shirt or coat of his Little Brother.

The Big Brother is now requested to raise his hand in the sign of the fraternity and repeat after me—

"I accept the responsibilities assigned to me—as a Big Brother of this pledge. I will diligently strive to carry out these responsibilities—to the best of my ability. I will not expect—or seek personal service from my little brother—but will act as his mentor throughout his pledgship and into active membership—doing all in my power—to exemplify the true principles—of Leadership, Friendship, and Service."

Will the pledges raise their hands in the sign of the fraternity and repeat after me—

"I willingly accept this pledge pin—as a token of my desire—to become in time—an active member of Alpha Phi Omega. I will wear it with honor and pride. I will seek the advice and counsel—of my Big Brother and Pledgemaster—in matters pertaining to my pledgship. I will faithfully discharge my responsibilities—to the best of my ability—as a pledge of Alpha Phi Omega."

(Both pledges and members may be seated.)

To you neophytes, the pledge insignia that has been placed upon you by your Big Brother signifies that he is willing to help—help you to understand the true meaning of Alpha Phi Omega. At no time will he expect or accept personal services from you.

The purpose of Alpha Phi Omega is to assemble college men in the fellowship of the Scout Oath and Law, to develop leadership, to promote friendship, to provide service to humanity and further the freedom that is our national, educational, and intellectual heritage.

This Big Brother-Little Brother relationship is not to replace the period of instruction prescribed by the pledgemaster and national fraternity, but is intended to give personal interpretation to the principles of Leadership, Friendship, and Service. Be ever mindful of the difference in being a servant of man and being of service to man.

Alpha Phi Omega points the way to Leadership, Friendship, and Service. You will have opportunities to serve on committees, to assume responsibilities, to participate in group action, to hold offices in your pledge class, to carry out your duties as a pledge with thought, imagination, initiative, and efficiency. You have a chance to become a Leader.

Friendship is also important to you. You will learn to be a friend to your Big Brother as well as the members of the

(Continued on page 6)



# Theta Delta, WAYNESBURG COLLEGE, Reports

By **ROBERT VIGLIANTI, President**

One of the characteristics of Alpha Phi Omega is its rapid growth on the national scene. In the same respect, Theta Delta Chapter, located on the Waynesburg College campus, Waynesburg, Penna., has made great strides forward beginning with the fall pledge class of 1960.

The new era of progress started with the Glenn R. Toothman pledge class consisting of seven pledges and four actives. Renewed activity was certainly evident as Theta Delta in the fall of 1960 labeled trees on campus, compiled a student directory and aided the administration during Freshman Days. The campus soon saw the results of the new Alpha Phi Omega chapter. More money was contributed to charity because of the UMOG contest, better attendance was observed at social functions sponsored by Alpha Phi Omega, and the men of Alpha Phi Omega stepped to positions of higher prestige on campus. Through their insight and accomplishments Theta Delta expanded and moved forward.

Now the stage was set for the Rev. A. Dale Sowers Pledge Class to make even further progress. A total of twenty-five men pledged Alpha Phi Omega during the second semester of 1961. During their pledge period they painted the fence surrounding the college football field, cleaned the college trophy cases, remodeled the Student Council meeting house, and sponsored a UMOG contest that collected two hundred dollars for charity. Half of this money was used to buy turkey dinners for local needy families at Thanksgiving while the other half was given to other charities. In order to gain money for the chapter, a hayride and a "guess the eyes" contest was sponsored. As the chapter rose in number, it also rose in caliber. The new pledge class contained the Sophomore Class President, three social fraternity members, athletes, and proven leaders and workers on campus. At this time the Dean of Men, realizing the progress of the fraternity, and with the cooperation of the administration, gave the chapter a more modern and larger meeting room. Because of the full cooperation of advisors, administration, and faculty, Theta Delta Chapter has realized increased prestige on campus.

With two big steps towards growth and achievement behind them, the third and biggest step came with the John F. Kennedy Pledge Class in the fall of 1961. This pledge class contained an unbelievable number of thirty-five men, ranging from the President of the Junior Class, three more members of social fraternities, five college athletes, and, most important, men willing to serve Alpha Phi Omega. This is when most of the achievements of Theta Delta came to light. Intramural contests were entered, and the sale of homecoming mums netted the fraternity a sizeable profit. However, most important was the winning of the first prize trophy for the outstanding float in the homecoming parade. An approximate one thousand man-hours were consumed as a sixty-five foot float with twenty-eight moving parts, and numerous gay colors portraying the story of "Cinderella" came to life.

The major accomplishment of the fraternity was yet to come in the form of a tremendous service project. Theta

Delta agreed to undertake the setting up and operation of a community center in Crucible, Penna. The center will utilize a building which at one time was the site of a movie house, and still contains four bowling alleys and a basketball court. It was donated to the college by the Crucible Steel Corporation.

Theta Delta has agreed to undertake the project, and beginning with the week of January 10, has repaired and painted the inside of the building. Our plans call for the formation of organized recreation leagues in the depressed community, and a program to provide entertainment for all young people. We also anticipate to have available recreation for the older residents of the community.

Once the rebuilding work is completed the center will be open during the week. The first vice president, chairman of the project, will have two members of the fraternity supervising the recreation at the center each night.

This, then, is the brief story of the advancement of Alpha Phi Omega at Waynesburg College. Because of it fifty men have realized the true wealth of Alpha Phi Omega, the national service fraternity. Because of such an advancement, the cardinal principles, leadership, friendship, and service have taken an important place in the lives of these men. Of course, there is room for improvement and progress, but the trend is certainly progressive. We, of Theta Delta, are proud of our advancement and recognition, and will continue to stand ready to serve our fellowman.

---

## Section 22 Conference Highly Successful

More than 120 delegates and chapter representatives participated in a lively and informative conference February 9-10-11 of chapters in North Carolina, South Carolina and Virginia at Raleigh.

Dr. Thomas T. Galt, Sectional Chairman and member of the National Executive Board, shared honors with Ed Andrews, the conference chairman; Ed Stubbins, host chairman and member of Iota Lambda, North Carolina State, the site of the conference. Joseph Scanlon, National Executive Secretary, was guest speaker. Fourteen workshops on chapter operations were featured.

Representatives attended from Davidson College, Davidson, North Carolina, and from Frederick College, Portsmouth, Virginia, where petitioning groups now exist.

The attendance and helpful participation of Presidential Representatives Ed Andrews, George D. Maddrey, Prof. M. Buford Blair, Dr. James W. Butler, William K. Craft, William D. Wilson and John J. Rodgers contributed greatly to the program.

Host chapters were Iota Lambda and Rho, University of North Carolina.

A dance followed the conference banquet. The committee in charge included Brothers Peter Gernert, Roland Stonaker, Jim Spotts and Jim Marsh.

Chapters present from distant points included Nu Rho, College of William and Mary, Williamsburg, Virginia, and Kappa Tau, The Citadel, Charleston, South Carolina.



# WHOM WILL YOU SERVE?

By HERBERT G. HORTON



Herbert G. Horton

Centuries ago a great number of persecuted people had been moved out of a strange land, miraculously guided by their Great Leader. Wonderful happenings had kept them strong and together; yet they grew discontented with their lot, and fell away from the great covenant holding them together as one. Reverses came: sickness, plague, deaths; yet they still got farther and farther away from their Leader. The time came when a prophet sent to them put it squarely up to the nation: "Choose ye this day whom you will serve!" They chose well, but it did not last. They still look for the guidance spurned so long ago. They again made the wrong choice.

During World War II, the writer, after serving two years in the Armed Forces in this country, was shipped overseas to an island base. As soon as he arrived, his brother officers, finding out he did not drink, importuned him to sell his club membership, which granted him the right to buy two "fifths" each month. Not using it himself, he believed that what was hurtful to him was also hurtful to others; so he refused to sell. His brother officers kept on asking him until finally the senior officer ordered it stopped; "he has a right to do what he wants to do." It did not raise him in the esteem of the others. They had all been out in the combat areas; sudden death, sinking ships and war's full blast had been theirs. Drinking was their way of forgetting it. This old-timer was a fuddy-duddy. Five months later he was transferred to a more advanced island where the voice of Tokyo Rose could be heard urging men to forget the war and think of their families back home. She was laughed at; and men went on with their work. Men here did not have time or inclination for strong liquor. The old-timer was glad he had made the right choice in the first place.

Today, college students face a bewildering array of new situations, companionships, temptations and desires. These beat upon them like the great rollers of thunder on ocean beaches. If they have had a strong backgrowth of good thinking and living they come through with a profitable college experience. The idea of making a four-year loaf from the old man's dough is pretty well out the window; college men and women have to help themselves today, more than ever before. Too, curricula have changed; work loads are greater. Yet students still achieve.

What is that invisible power which we especially need at this time? All you readers know what it is. The last three jewels in our insignia give us the key—"brave, clean, reverent." Brave to take life as it crowds in upon our daily lives; clean in our associations, our principles and our inner thoughts; reverent in the presence of the Giver and Guide of all life. The writer is half past 70; has been more or less in Scouting since 1912; and has had a chance to see what happens to men who, in their boyhoods, got the right start and kept on the course—and those who got off the beam and skidded into oblivion. His word to our membership everywhere is:

Get with it! Time's a-wasting. It's later than you think!

## Oregon Chapters Conduct Joint Ceremony

By DAVID S. PELTON, Corresponding Secretary  
Zeta Psi, University of Oregon

Three Oregon chapters initiated twenty-three men and welcomed a former cabinet member as an honorary member January 13, 1962, in ceremonies at the University of Oregon.

The University of Oregon's distinguished President Arthur S. Flemming accepted honorary membership in Zeta Psi Chapter. Sharing in the ceremony and each supplying new initiates were Zeta Xi, Southern Oregon College and Delta Eta, Oregon State University.

Officiating at the ceremony were, by chapters, Ralph Shattuck, President, Mr. George Alexander, Scouting Advisor, and David Pelton, Secretary, from Zeta Psi; Walter Humphrey, President, and Harold Trinka, Treasurer, from Zeta Xi, and Mr. Wicks, Chairman of Advisory Committee, Joseph Tateyama, Sergeant-at-Arms, and John Wooster, Alumni Secretary, from Delta Eta.

The new members of Alpha Phi Omega are:

Zeta Psi—John Alexander, Randall Boyer, Arthur S. Flemming, Thomas Hertzman, Norman Nevers, Robert C. Scott, Robert Edwards, Paul Minor, Jerald Tucker, Michael Lemon and Brent Whitmore.

Zeta Xi—David Osborn, Gary Fields, Dean Halbert, Byron Kelson, William Mills, Richard North and David Patterson.

Delta Eta — William Anderson, Joseph Barker, David Beckham, Richard Bryant, James Casad and Michael Wilson.

## BIG BROTHER—LITTLE BROTHER

(Continued from page 4)

active chapter and your pledge class. You will find that there is a good deal of satisfaction to be gained from thinking of others and doing things with and for them. You will learn that friendship is not merely a toleration of the other fellow, but an understanding and thoughtfulness and sympathy for his ideas. We trust that at the end of your pledgeship you will be a better man because you will know what it is to understand men's interests and ideas and because they will in turn share in yours.

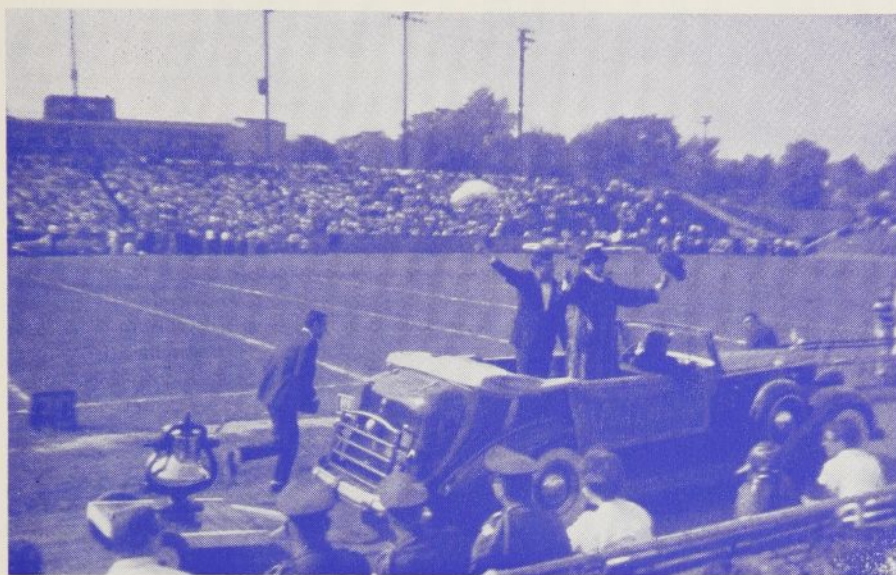
In Alpha Phi Omega you will be working with others, giving as well as receiving, teaching as well as learning. Participation in fraternity projects will become enjoyable work—work which you will soon look forward to doing.

In such aspects of Leadership, Friendship, and Service as you participate, you must depend upon your Big Brother for counsel and guidance. As you visit with him endeavor to learn the true meaning of the cardinal principles of our fraternity. Know your Big Brother as a true friend and in turn you will reap the bountiful rewards of pledgeship and finally full membership of Alpha Phi Omega. Be ever mindful of your obligations as a pledge in our Brotherhood.

To each and every Little Brother—Godspeed on your journey and may you complete to the full measure the obligations you are undertaking—obligations in the Trinity of Fraternalism—To Be a Leader—To Be a Friend—To Be of Service.

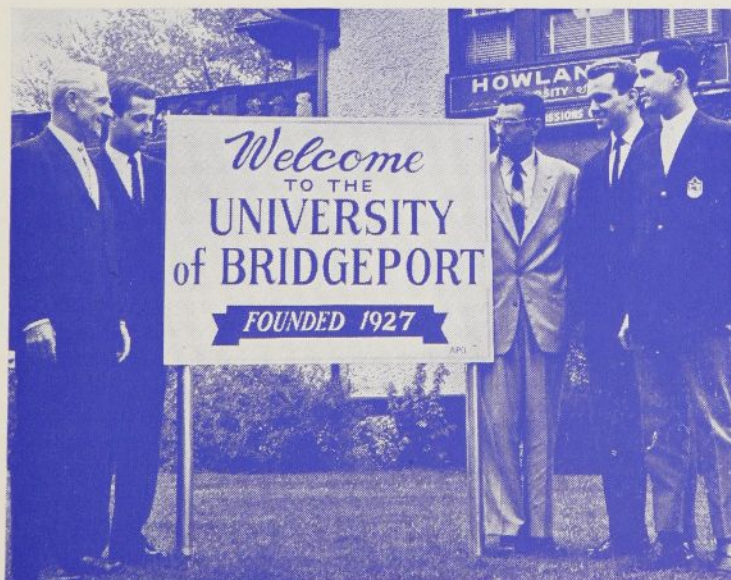


# As the Camera Sees Us



Epsilon Phi Chapter, Youngstown University, displays an antique Victory Bell, mounted on trailer, which it recently presented to the University. Funds for the bell were raised through the chapter's used book exchange. Left to right, Ron Getsay, Executive Vice President (running behind car); Tom Wajda, President Epsilon Phi Chapter; Mike Shelley, Second Vice President (in raccoon coat); Richard Shelar, Treasurer.

Zeta Omega, Baylor University, Waco, Texas, will host the Texas-Oklahoma-New Mexico Sectional Conference, Saturday and Sunday, April 7-8, 1962. Members of the Conference Steering Committee are (standing) Larry West, Conference Co-Chairman, and seated, left to right, Ronnie Jones, Corresponding Secretary; Dan Bohannon, Chapter President; Robert Beckley, Recording Secretary.



Theta Psi, University of Bridgeport (Connecticut) recently designed and donated funds for an attractive "Welcome" sign, erected on the lawn of the University's Admissions Building.

Dedicating the project are, left to right, Dr. James H. Halsey, President of the University; Fiore Bruno, Fraternity President; Mr. Hugo James, Advisor; Paul Schulman, Pledge Vice President, and Marvin Berman, President of the pledge class which was instrumental in the precipitation of the project.



# SPOTLIGHTING APO

- ★ DELTA NU, Yale University, has organized a Scout troop to serve underprivileged boys. They intend to help solve the equation in the "blackboard jingle." The chapter also is providing instructors for a Junior Red Cross Lifesaving Course at the New Haven Boy's Club. The chapter's Yale Blood Drive, second largest in the world, broke its own record on the Yale campus last December by collecting a record 1,197 pints for the Connecticut Red Cross.
- ★ GAMMA ALPHA, University of Washington, reports a helpful session with Prof. Harry C. Barnett, National Executive Board member and National Field Representative. The chapter's recent U.M.O.C. contest raised approximately \$700.00 for its Scholarship fund. Gary Bates chairmanned the project.
- ★ ZETA DELTA, Miami University, scheduled an Explorer Career Day on campus for March 3. The chapter held its activation of new members on Washington's Birthday. During vacation periods chapter members transport women's luggage to bus stations or women's residence halls. Helping with registration is a key service project. Jerome Weiskittle is Chapter President.
- ★ ZETA NU, Southern Illinois University, has accepted the responsibility of publishing a Section 16 Newsletter for chapters in Southern Illinois and Eastern Missouri. Jim Dunn is the editor. Thank you, Jim, for this helpful publication.
- ★ GAMMA PSI, University of Minnesota, will hold its 21st annual Charter Day observance on April 18. The chapter's license plate sales was a huge success. The chapter's breezy "Gamma Psi Gab" has Roy D. Conradi as editor. Brother Conradi last year was President of the petitioning group chartered at the University of Minnesota, Duluth. Gamma Psi's past presidents include Manfred O. Aws, Jr., National Treasurer of Alpha Phi Omega.
- ★ ETA, Northern Illinois University, has established a university regulated loan fund through the use of funds from its book exchange. Questions concerning this fund may be directed to Hal Farren, Chapter President.
- ★ BETA OMICRON, Missouri School of Mines and Metallurgy, has received from the American Red Cross a "Thank You" for their support of Red Cross Blood Drives. The chapter now has a pledge group of 51 men, the largest ever in its history. Raymond H. Hamtil has been the Pledgemaster in charge.
- ★ EPSILON IOTA, Mississippi State University, installed new officers and initiated six new members and new advisors for Kappa Eta, Mississippi Southern, on February 12. Sectional Chairman Richard H. Herron accompanied the installing delegation.
- ★ NU MU, University of Minnesota, Duluth, has assisted in Snow Week activities, sponsored an Explorer sports day and helped with Order of the Arrow winter convention. The chapter will observe its first anniversary in May.
- ★ PHI, Syracuse University, received a 30-year Recognition Certificate February 24. The chapter served as host to the Section 26 conference of upper New York chapters.
- ★ CHI, University of California, Los Angeles, recently observed its 30th anniversary. Honor guests included Herbert G. Horton, one of Alpha Phi Omega founders; National Executive Board members C. J. Carlson and Irwin Gerst; Dean of Men Adolph T. Brugger of UCLA, and Dr. Joseph F. McGuire, one of its own chapter members.



# CHAPTER ACTIVITIES

- ★ ALPHA TAU, Butler University, and ZETA GAMMA, Valparaiso University, teamed up to provide service for the Indiana State Solo and Ensemble contest for high schools, held recently at Butler University. The men of Zeta Gamma got underway at two o'clock in the morning to be on time for their assignment. The respective chapter presidents are Gaylord W. Myers and Thomas E. Evans.
- ★ ALPHA OMEGA, Kirksville College of Osteopathy and Surgery, prizes a letter of recent date from D. E. Maddox, D.O., Chairman of the Out-Patient Clinic at K.C.O.S. Recently the chapter purchased some new lighting equipment for the clinic. Dr. Maddox wrote as follows: "The Alpha Phi Omega organization here at the college is a very unique organization. This is one of the most active organizations on any school campus that I have encountered, for the improvement and betterment of all conditions regarding school affairs. They do much in financial assistance with regard to equipment and facilities for our students. It is a most worthy organization."

---

## NEW LIFE MEMBERS

By **DEAN ARNO NOWOTNY,**

**Past National President; Chairman, National Committee on Life Membership**

Alpha Phi Omega welcomes these new Life Members, added since the last list was published in December, 1961, Torch and Trefoil, and congratulates them and their chapters. You, too, can become a Life Member. Join now. The fee is \$25.00, payable in amounts of \$5.00 and up.

Dolph Briscoe, Jr., Alpha Rho, The University of Texas  
Jerry J. Townsend, Nu Zeta, Abilene Christian College  
Nix O'Brien Bodden, Alpha Rho, The University of Texas  
Lorence L. Bravenec, Alpha Rho, The University of Texas  
John A. Carnaghie, Iota Rho, The Florida State University  
Kenneth A. Dyer, Alpha Rho, The University of Texas  
Hilbert C. Engelhardt, Alpha Rho, The University of Texas  
Jack Holland, Alpha Rho, The University of Texas  
Dr. Samuel N. Kolmen, Alpha Rho, The University of Texas

C. C. Nolen, Alpha Rho, The University of Texas  
George W. Porter, Alpha Rho, The University of Texas,  
and Alpha Eta, University of Kansas City

Elwood J. Preiss, Alpha Rho, The University of Texas  
John G. Steele, Jr., Alpha Rho, The University of Texas  
Bartlett Strayhorn, Alpha Rho, The University of Texas  
Lawrence H. Warburton, Jr., Alpha Rho, The University of Texas

Ira B. Wile, Alpha Rho, The University of Texas  
Frederick Young, Gamma Omicron, Queens College  
Prof. Harold R. Crites, Epsilon Phi, Youngstown University  
James Sitton Cunningham, Gamma Lambda, Clemson College

Benjamin C. Young, Jr., Theta Eta, Kansas City College of Osteopathy & Surgery

W. H. Aydelotte, Beta Zeta, University of Georgia  
Ivan W. Knobler, Alpha Rho, The University of Texas  
Lucius E. Young, Zeta Phi, Howard University

## ARE YOU QUALIFIED?

The University of Vermont announces the availability of a limited number of Graduate Residence Hall Assistantships for men beginning fall semester, 1962. Residence hall assistantships afford graduate students opportunity to obtain practical experience in hall activities, human relationships, government and administration while pursuing an advanced degree in their chosen field of study. Graduate Assistantships are open to either married or single men who qualify for graduate work at the University. Leadership experiences are desirable. Selection is based on character, academic record, recommendations and personal interview. The University of Vermont at present has no chapter of Alpha Phi Omega and is particularly interested in young men who are interested in the development of a charter chapter. Graduate students receive a minimum gross salary of \$1800 for the academic year. This includes room, board and tuition, plus a stipend. Requests for applications and additional information should be addressed to Dean of Men Roland D. Patzer, no later than June 15, 1962.

## Ohio Chapters Schedule Sectional Conference

**Youngstown University, April 13-14**

By **RICHARD C. SHELAR, Treasurer, Epsilon Phi**

Epsilon Phi, Youngstown University, will host April 13-14 the Ohio Sectional Conference, Dr. L. G. Brailey, Sectional Chairman, has announced.

Epsilon Phi has just completed one of the biggest years in its history. Its projects have included participating in the first annual Heart Fund drive, a successful UMOG contest and Jester's Ball, guides for touring freshmen, and a campus information booth. The chapter provided escort service and lifeguards for a "Y" weekly swim for Handicapped children. The chapter is proud of its book exchange, too.

Proceeds of the UMOG contest were donated to St. Paul's Childrens Home in Greenville, Pennsylvania.



## QUESTIONS FREQUENTLY ASKED IN ALPHA PHI OMEGA

By **JOSEPH SCANLON**  
National Executive Secretary

A. What are the Principal Obligations of a Pledge?

First, to Learn what Alpha Phi Omega is and is not. The Pledge Manual helps to do this. Be sure and instruct each pledge additionally in the history and success of your own chapter. Pledge tests are in order but no hazing is tolerated.

Second, to share in Service projects. Every good chapter requires a reasonable participation in service projects of each and every pledge. Some measure this in hours of service performed, others in the number of projects shared in. Most chapters assign projects to pledges; some permit the pledges to choose amongst a number of projects presented by the actives. The pledge learns to serve by serving, not promising.

Third, the most successful chapters expect each pledge to find a Replacement for himself in the next pledge class. This is the best method of imparting Fellowship as something more than just getting acquainted with the actives.

B. How Do You Keep Advisors Interested and Active?

It's not difficult. Use the Buddy system. Assign a key officer or member as contact man with each and every advisor. Then have each pair meet weekly at a time and place convenient to them. The active briefs the advisor on the chapter's program and calendar of events. The advisor adds his ideas. Partnership results. All the rest follows naturally.

C. Can the Chapter Use Money Given to it for Pledge Fees or Initiation Fees?

No. This money is a trust fund, not an operating fund. It should be forwarded to the National Secretary promptly so that each pledge and each new initiate is properly recorded. The National Constitution, adopted by chapter representatives, requires that initiation fees be sent to the National Secretary *before* the initiation takes place. That enables the chapter to receive and present the new initiate's shingle and pocket identification card at initiation.

D. Can the Chapter Treasurer spend Chapter Money whenever he thinks he should?

He can't if the chapter is run properly. The Treasurer's job is to receive and receipt for all monies, to deposit them in a banking account in the chapter's name and to draw on these funds when presented with a bill owed by the chapter.

E. Does the Treasurer only Sign Checks?

No. Most chapters require at least two signatures, that of the Chapter President and Chapter Treasurer. Some require an advisor to sign also.

F. How does a Chapter keep out of Debt?

First, by working with its advisors. Second, by working out a budget based on what it can reasonably expect as income and what a given event will probably cost. Don't guess. Don't commit the chapter to guaranteeing something you probably won't get. This is especially true of food service. If you are host to a conference, get the food served cafeteria style, each man on his own. Then use an available side room to which men can bring their trays and assemble for a program. If it's a banquet or formal dinner ask for some money in advance or sell tickets on a no refund basis in advance. Let the man buying the ticket sell it to someone else if he can't get there himself.



Alpha Psi, Lehigh University, welcomes new honorary members Professor Joseph B. McFadden, left, and Dr. Harvey A. Neville, President of Lehigh University, who stands between Chapter President Michael A. B. Vianello, second from left, and Professor George C. Horak, extreme right, the chapter's Advisory Committee Chairman.

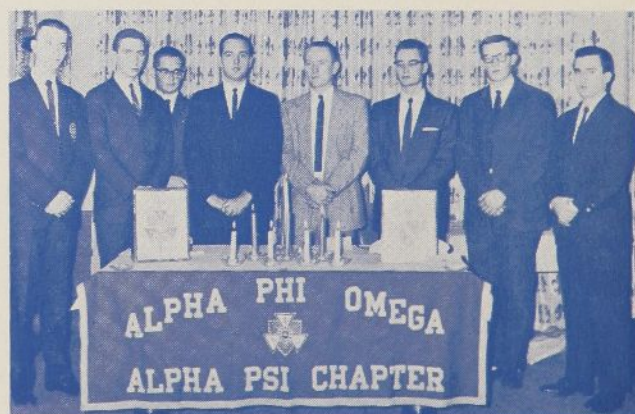
## Alpha Psi Chapter Initiates Lehigh University President

By **MICHAEL VIANELLO**, Chapter President

Alpha Psi's crowded activities program was climaxed December 17, 1961, when Dr. Harvey A. Neville, Lehigh University's distinguished President, and Professor Joseph B. McFadden, head of the Department of Journalism, were initiated as honorary members. Also initiated on this occasion as active members were William F. Dale, Robert D. Krotzer, John A. Mahon III and Martin R. Simsak.

Dr. Neville, an outstanding authority in the field of Catalysis and Colloidal Chemistry, became Lehigh's ninth president on October 8, 1961. He has been associated since 1927 with the University. He is a Fellow of the American Association for the Advancement of Science and the American Institute of Chemists. Professor McFadden came to Lehigh in 1948 as an instructor of journalism. During World War II he served as an officer in the Canadian Army. He was presented Alpha Psi's service award in May, 1961.

Alpha Psi's 37 actives and 17 pledges are constantly engaged in service projects on the Lehigh campus. Chapter projects include the Ugly Man contest, the proceeds being donated to the Campus Chest Fund; the Used Book Sale, the Blood Bank, and a Spring Initiation and Fellowship Banquet.



Alpha Psi's ritual team, left to right, includes: Ken Horch, William McIntire, John Harrington, Michael Vianello, Prof. George Horak, Charles Coutant, Paul Seibert, and William Birdsall.



# Sam Houston State College Reactivates Theta Rho Chapter

By **DAN POULSON, President**

Theta Rho, Sam Houston State College, Huntsville, Texas, was reactivated December 13, 1961, at an installation banquet at the Texan Cafe, Huntsville. The original charter was issued in 1950 but with the outbreak of the Korean war the chapter lost most of its membership.

Installation ceremonies were directed by Dean W. T. Creager and Joseph Scanlon, National Executive Secretary.

Present at the banquet were the chapter's honorary member, Dean W. T. Creager; two Scouting Advisors:

W. H. Artusy, District Executive for the Huntsville area, and H. C. Rogers, Jr., a local businessman; and five Faculty Advisors: Major G. L. Van Fleet, Captain Charles T. Hutzler, Gordon R. Darmody, B. K. Marks and Walter Kidd.

Previous activities of the chapter have been assisting with the United Fund Drive, the Scouting program in this area, registration and commencement. The chapter plans further activities that will benefit the campus such as a guide service for visitors and the centralization of the lost and found.

Newly installed officers of Alpha Phi Omega are: Dan Poulson, President; Jim Wille, Vice President; Steve Keffer, Corresponding Secretary; Jerome V. Frnka, Secretary; Don Collins, Treasurer; and Gary Lemmond, Historian.

Other members are: Don Foster, Omer E. Miller, Ed Leach, Donald Vacker, Lannie Sheppard, Gerald W. Frels, Nolan Stafford, Harold R. Newton, Roger A. Manuel, Norman Mayes, Cy Yannarelli, Richard Philpott, Ted Price, Larry McMurray, Jimmy L. Kelley, Stone Murray, and Bracy Goodner.

## THE VALUE OF ALPHA PHI OMEGA

By **AMSTER HOWARD, President**  
and **JOHN BENNETT, Member**  
**Alpha Omicron Chapter,**  
**Southern Methodist University**

The philosophy inherent in Alpha Phi Omega can be of great value during one's college career and throughout life. Its organization and program supplements the academic endeavor, but our fraternity is not just an organization, it is activity with a purpose and a method by which college men can contribute their share of today's community living.

Within Alpha Phi Omega is opportunity to work with fellow students outside of the classroom. Here is a chance for us to respond, through service, to the contributions and advantages that our colleges, communities, and nation have given us. A student, who has received for so many years, finds himself in a group of like-minded young adults who are dedicated to repaying this debt. Here, often only in forgetting about ourselves for awhile, can we be "true to self and to each other."

Leadership, Fellowship, and Service should not be just three memorized words, for here within lie the opportunities of Alpha Phi Omega.

Here is opportunity to learn how to work with people, how to plan and promote activities, and how to put your ideas across more effectively and efficiently.

Here is an opportunity to leave the isolated self-corner that the serious college student often finds himself. Education is a selfish aim and even though later we may use it in serving others, to keep from getting completely self-centered while in school, the time spent acquiring this knowledge should not be without unselfish aims and activities. We cannot postpone our obligations to others.

Involvement with self breeds envy, greed, and hate. Only when man subordinates himself to others and provides for their enjoyment and comfort does real happiness come to man, the happiness that is the joy of giving.

One does not seek membership with the express idea of gaining something, for Alpha Phi Omega is giving and through giving of himself, man approaches his purpose.

"I sought my soul, but my soul I could not see,  
I sought my God, but my God eluded me,  
I sought my brother and found all three."

## 1962 National Convention Under Way

By **A. G. Spizzarri, Convention Coordinator**  
**Member National Executive Board**

The 77 brothers of Alpha Phi Omega who braved a sleet storm on December 9 to sit in on the first 1962 convention brainstorming gathering recommended the selection of the University of Kansas City Student Center as the headquarters for the 17th national gathering. The convention dates will be Thursday, Friday and Saturday, December 27-28-29, 1962.

National President William S. Roth and Convention Program Chairman Gerald Plessner led the gathering in a thought provoking session on convention plans and procedures regarding arrangements, registration, tours and information, exhibits, a ladies' program, publicity and morale. Men of Alpha Eta, University of Kansas City, headed by President Dave L. Nelson, proved delightful hosts.

The new, impressive Student Center building offers a unique opportunity for convention operations. Food service is especially attractive. You can serve yourself through vending machines or the old familiar cafeteria line or be served. The banquet and assembly room can accommodate a thousand or more. Assembly rooms, beautifully furnished and decorated, are readily available.

Following the general session Gamma Xi initiated 35 new men. A banquet and dance followed the ceremony. Speakers included President Roth and Father Maurice E. Van Ackeren, S. J., President of Rockhurst College.

Chapter delegates included brothers from Beta Kappa, Central Missouri State College; Beta Upsilon, Northwest Missouri State College; Gamma Xi, Rockhurst College; Theta Eta, Kansas City College of Osteopathy and Surgery; Lambda, University of Kansas; Pi, Kansas State University; Delta Mu, Kansas State Teachers College, Pittsburg; Kappa Chi, Creighton University, Omaha, Nebraska; Mu Rho, Upper Iowa University; Delta Delta, St. Louis University.

Each chapter president signified his willingness to serve on convention coordinating committees.





# PACE-SETTING CHAPTERS



## These 52 Chapters Lead the Nation in the Present 1961-62 University Year

By **GEORGE F. CAHILL**,  
Chairman, National Membership Committee

Congratulations to the officers, members and advisors of the chapters listed below. National records of Alpha Phi Omega indicate they lead the nation in new pledges, new initiates and quality program. They are listed as an incentive for all chapters in Alpha Phi Omega to increase and broaden our objectives for Leadership, Friendship and Service.

### 8,000 PLUS STUDENTS

- |                   |  |
|-------------------|--|
| 1. Beta Sigma     | <i>Texas Tech</i>                        |
| 2. Alpha Alpha    | <i>University of Illinois</i>            |
| 3. Iota Rho       | <i>The Florida State University</i>      |
| 4. Delta          | <i>Auburn University</i>                 |
| 5. Xi             | <i>Iowa State University</i>             |
| 6. Rho            | <i>University of North Carolina</i>      |
| 7. Alpha Beta     | <i>The Pennsylvania State University</i> |
| 8. Alpha Gamma    | <i>Purdue University</i>                 |
| 9. Lambda         | <i>University of Kansas</i>              |
| 10. Epsilon Sigma | <i>University of Buffalo</i>             |
| 11. Delta Sigma   | <i>University of Connecticut</i>         |
| 12. Delta Nu      | <i>Yale University</i>                   |
| 13. Eta Rho       | <i>Marquette University</i>              |

### 3,000 TO 8,000 STUDENTS

- |                 |  |
|-----------------|--|
| 1. Iota Tau     | <i>St. Olaf College</i>                      |
| 2. Upsilon      | <i>University of Wisconsin—Milwaukee</i>     |
| 3. Alpha Chi    | <i>Massachusetts Institute of Technology</i> |
| 4. Zeta Omega   | <i>Baylor University</i>                     |
| 5. Gamma Lambda | <i>Clemson College</i>                       |
| 6. Delta Tau    | <i>University of New Mexico</i>              |
| 7. Epsilon Phi  | <i>Youngstown University</i>                 |
| 8. Alpha Tau    | <i>Butler University</i>                     |
| 9. Kappa        | <i>Carnegie Institute of Technology</i>      |
| 10. Mu Chi      | <i>Indiana State College—Pennsylvania</i>    |
| 11. Theta Beta  | <i>Fenn College</i>                          |
| 12. Beta Kappa  | <i>Central Missouri State College</i>        |
| 13. Lambda Pi   | <i>La Salle College</i>                      |

### 1,500 TO 3,000 STUDENTS

- |                  |   |
|------------------|---|
| 1. Lambda Omega  | <i>California State College—Penna.</i>    |
| 2. Gamma Xi      | <i>Rockhurst College</i>                  |
| 3. Gamma Eta     | <i>Springfield College—Massachusetts</i>  |
| 4. Nu Nu         | <i>Eastern New Mexico University</i>      |
| 5. Beta Omicron  | <i>Missouri School of Mines</i>           |
| 6. Kappa Tau     | <i>The Citadel</i>                        |
| 7. Nu Zeta       | <i>Abilene Christian College</i>          |
| 8. Iota Chi      | <i>Northern Michigan College</i>          |
| 9. Alpha Upsilon | <i>DePauw University</i>                  |
| 10. Nu Gamma     | <i>Southwest Texas State College</i>      |
| 11. Mu Psi       | <i>Niagara University</i>                 |
| 12. Eta Lambda   | <i>Wisconsin State College—Eau Claire</i> |
| 13. Beta Upsilon | <i>Northwest Missouri State College</i>   |

### LESS THAN 1,500 STUDENTS

- |                    |  |
|--------------------|--|
| 1. Theta Delta     | <i>Waynesburg College</i>                    |
| 2. Mu Xi           | <i>High Point College</i>                    |
| 3. Theta Xi        | <i>Parks College of St. Louis University</i> |
| 4. Lambda Tau      | <i>Salem College</i>                         |
| 5. Nu Alpha        | <i>Quinnipiac College</i>                    |
| 6. Mu Rho          | <i>Upper Iowa University</i>                 |
| 7. Lambda Kappa    | <i>Loras College</i>                         |
| 8. Eta Kappa       | <i>Stout State College</i>                   |
| 9. Nu Kappa        | <i>Campbell College</i>                      |
| 10. Lambda Upsilon | <i>Ursinus College</i>                       |
| 11. Nu Delta       | <i>Lebanon Valley College</i>                |
| 12. Lambda Lambda  | <i>Shippensburg State College</i>            |
| 13. Alpha Nu       | <i>St. Norbert College</i>                   |