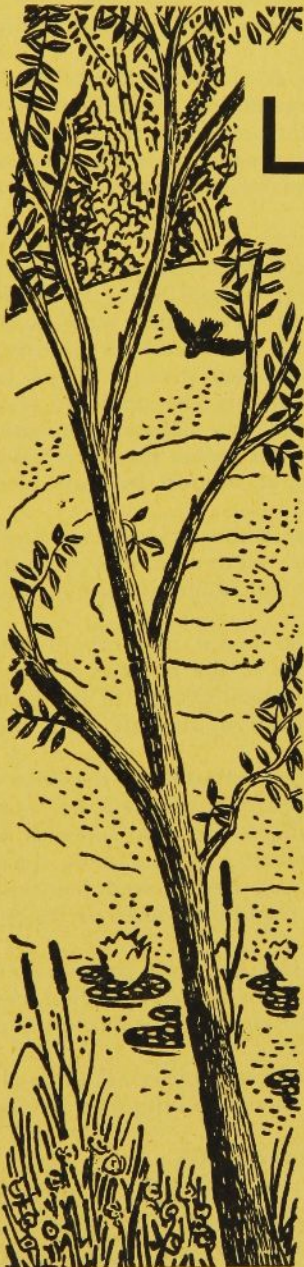


# TORCH AND TREFOIL

## OF ALPHA PHI OMEGA



LIKE THE RIPPLES IN A POOL . . .

**T**HE SERVICE PROGRAM of Alpha Phi Omega spreads in ever-widening circles of achievement. A broadening scope of activity is made possible by increased man-power and by increased devotion on the part of active members, pledges, alumni and advisors. New avenues of helpfulness to fellowmen are constantly opening to Alpha Phi Omega as a result of greater preparedness on the part of the chapters to successfully carry out service assignments large and small.

Each year, Alpha Phi Omega continues to do more than ever before to deserve the distinguished title of "National Service Fraternity." In the history of our fraternity, this year of 1939-40 will be marked as a year of intensification, a period of all-around growth. Reports which have reached the National Office from college presidents, deans, and chapter officers and advisors indicate that Alpha Phi Omega is making its services more effective on campuses throughout the United States.

Letters received from many chapter officers in recent weeks tell of the great joy which has been theirs in serving as chapter leaders and of the major part Alpha Phi Omega has played in developing their leadership capacities. Improved administrative policies have helped give each member a specific responsibility in chapter affairs.

The meeting programs which constitute such a vital part of chapter operation have become more interesting. Special speakers and entertainment in addition to chapter business have added variety to the chapter meetings, helping to maintain an alert interest on the part of all members.

Increased membership has gone hand in hand with improved service, and the May induction ceremonies will bring the national membership to the highest number in the history of the fraternity. And of special importance is the fact that more members of Alpha Phi Omega than ever before will be back in school next September to take their parts in enthusiastically opening fall activities.

A greater spirit of national unity has been provided by certain universal projects, by state and district conferences, by preparations for the 1940 National Convention and by the services of the National Office.

The news of Alpha Phi Omega is rapidly spreading to other campuses. During the past eight months, inquiries have come from more than 100 schools and in many instances the descriptive material provided is now in use in the formation of new chapters.

And so, in all phases of Alpha Phi Omega activity, our fraternity is pushing forward, ever advancing as a real constructive force on the college and university campuses of our nation.



# TORCH and TREFOIL

The Magazine of  
Alpha Phi Omega  
National Service Fraternity

Issued regularly four times a year in  
October, December, March and May.  
Subscription price 50c a year

Entered as second class matter February 5,  
1938 at the post office at Kansas City, Mo.,  
under act of March 3, 1879.

Office of Publication  
407 Land Bank Bldg.  
Kansas City, Missouri

## HONOR TWO FACULTY ADVISORS

At the spring initiation banquet and party of Beta Psi Chapter, in which nineteen new members were inducted, the chapter honored Professor Oliver M. Skalbeck, Senior Faculty Advisor, by presenting him a jeweled Alpha Phi Omega pin. This insignia was presented by the chapter members as an expression of appreciation for the close cooperation and assistance which Professor Skalbeck has given in APO at Southeast Missouri S. T. C.

Dean Albert K. Heckel, Dean of Men at the University of Missouri, is to be the guest of honor at the spring banquet of Beta Eta Chapter, on the occasion of his retirement from the deanship. Dean Heckel has been a cooperative factor in the founding and advancement of Beta Eta Chapter, serving as a faculty advisor.

### THE EDITOR SAYS . . .

Let's "talk" Alpha Phi Omega among the persons whom we contact during the summer vacation months. A word from a member to some Scout who is planning to attend college or university next fall will probably be a great boost toward causing him to want to affiliate with our friends!

This year more than ever we have reason to be proud of Alpha Phi Omega because of the fine service record of the chapters. Let's recommend Alpha Phi Omega to our friends!

## A Letter to You From the National President

My dear Brothers from Coast to Coast:

This is the last TORCH AND TREFOIL of this school year, and I do want the privilege of using its columns for a message to every brother of our fraternity.

I am thinking at this time not only of the work which must be done by your chapter officers if this year is to be closed in vigorous fashion, but of the individual responsibility which is yours and mine.

Share with me this one thought: If every individual member of Alpha Phi Omega were to do one Good Turn for APO during the remaining weeks of school, what a tremendous "lift" our fraternity would experience! Can you imagine it? Three thousand single deeds for the strengthening, building, and future perpetuation of our fraternity! Three thousand minds and hearts tuned in a keen spirit of fellowship and helpfulness!

Just one Good Turn on your part can do the job. Don't leave it all for your officers. If they have done a good job throughout the year, they deserve a bit of 100% cooperation at this important time, if they have had "hard sledding," they more than ever need your personal aid in carrying the chapter forward to a successful close this spring and a sound beginning next year.

What can you do? Many things.

Your chapter officers will be giving full attention to the strengthening of administrative machinery, it is their responsibility to tighten up the chapter organization, to see that each new officer and committee chairman is fully acquainted not only with the duties of his office but with opportunities as yet untouched, to see that plans are laid for fall so that chapter work will be under way before the opening of school instead of three weeks afterward, to plan for summer contacts with prospective students, to add needed manpower before the year closes, etc. **Give your chapter officers the finest sort of support in their plans for closing the year.**

**But don't stop there!** Make available to the new officers and committee chairmen some of your own ideas relative to new activities or policies. Whether or not they find them permanently usable, you will stimulate their thinking!

Or, make contacts with prospects who might be brought into the chapter in the fall, and present their names to the chapter officers.

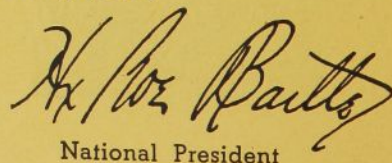
Or, make it a point to interest one new faculty man in the fraternity and its program, so that your administrative support will thus be strengthened.

Or, contact a Scout Troop in the college town and tell the boys about Alpha Phi Omega on the campus, so that its members will be interested in your chapter when they become of college age. Do likewise with a Troop in your home town during the summer. At the same time give these boys some idea of what your Scouting background has meant to you so they will have new reasons for continuing their activity, thus doing your council a Good Turn.

These are but suggestions. They are for the most part small things in themselves, but three thousand Good Turns for APO would create a great wave of keen fellowship and helpfulness. And it can be a reality if YOU, my brother, do your part in it! Why not?

My best wishes go with all of you as you leave your various institutions and dauntlessly "carry on" in whatever activity lies before you.

Faithfully and fraternally yours,



National President



## NEW CHAPTERS IN THE OFFING

Seven Petitions Received, and Several Others Now Being Completed



The badge of Alpha Phi Omega is soon to be seen on several more college and university campuses. Keen interest has been shown throughout this school year in establishing new chapters — interest created by the enthusiasm of chapter members, alumni, educators, Scouters and National Executive Board members.

Seven petitions are now on file in the National Office from:

University of Colorado, Boulder.  
Texas Christian University, Fort Worth.  
Clemson College, Clemson, South Carolina.  
Brooklyn College, Brooklyn, New York.  
Evansville College, Evansville, Indiana.  
University of Idaho, Moscow.  
Rockhurst College, Kansas City, Missouri.

Preparatory groups are well organized and functioning in twenty-eight other schools, and the petitions are expected soon. They are on the campuses of:

North Texas State Teachers College, Denton.  
Queens College, Flushing, New York.  
University of Chicago.  
New York State College, Albany.  
University of Michigan, Ann Arbor.  
Western State Teachers College, Kalamazoo, Michigan.  
Colorado State College of Education, Greeley.  
Louisiana Polytechnical Institute, Ruston.  
Occidental College, Los Angeles.  
Whitman College, Walla Walla, Washington.  
St. Louis University.  
Gustavus Adolphus College, St. Peter, Minn.  
Florida Southern College, Lakeland.  
Culver-Stockton College, Canton, Missouri.  
Massachusetts State College, Amherst.  
University of Maryland, College Park.  
Miami University, Oxford, Ohio.  
University of Oklahoma, Norman.  
Emory University, Atlanta, Georgia.  
Rice Institute, Houston, Texas.  
University of North Dakota, Grand Forks.  
University of Minnesota, Minneapolis.  
McPherson College, McPherson, Kansas.  
Rose Polytechnic Institute, Terre Haute, Ind.  
Mankato Teachers College, Mankato, Minn.  
University Heights College of N. Y. U., New York.  
Ohio University, Athens.

In addition to these, your National Office is in communication with students and faculty men on more than sixty other campuses, working toward organizing local service groups in preparation for Alpha Phi Omega membership.

## FIRST INDIANA STATE CONFERENCE A GREAT SUCCESS

By Harold F. Bennett, Mu, Conference Secretary

National President H. Roe Bartle officiated in his inimitable way at the first Indiana State Conference of Alpha Phi Omega, held on the Butler University campus in Indianapolis, March 17, 1940. Introductions all around gave evidence that all five of the chapters in the state were represented: Indiana, Purdue, Butler, DePauw and Indiana State Teachers, and also present were representatives from Rose Polytechnic Institute, the University of Chicago, and the Evansville and Indianapolis Councils. Fifty-three delegates in all were present.

Off to a good start, the conference theme "Intensification" was announced by President Bartle and was outlined in detail by Brother Sidney B. North, National Secretary. The six points of the year's growth program, stronger administration, increased service, more interesting meetings, greater man-power, or-

ganization of new chapters and national unity, were offered as subjects of discussion throughout the meeting.

In a panel discussion among the chapter presidents, the National President stressed first the importance of having interested faculty advisors and strong administration. It was found that not all the chapters have regularly scheduled executive committee meetings, and these were strongly recommended.

In response to the question: "Does Alpha Phi Omega hold a place of respect and prestige on your campus?", all except Purdue answered affirmatively. "At Purdue, Alpha Phi Omega has gained the proper faculty recognition, but the students are indifferent."

The question, "What makes a member active?" brought the following opinions: Interesting meetings, service projects, responsibilities, fellowship, able leadership.

It was recommended that each chapter president spend a thirty-minute period alone with his Senior (Continued on next page)

## The Best Ever

**S**PRING ELECTIONS are now past history and a new group of student officials will soon take charge of the government of The University of Texas campus.

This year, the election had several closely contested races—four requiring run-offs and one requiring a recount of the primary ballots. Last year, only one run-off election was necessary. Five students in 1939 were elected without opposition, while only two found such opportunities this year.

All of the races were hard fought and, collectively, the campaigns were more colorful than ever before. Too, the campaigns were conducted on a very high level. There was a minimum of bad politics.

The most outstanding feature of the 1940 spring elections, however, was performed by a group of students other than the candidates themselves, for under the guidance of Alpha Phi Omega, national service organization, the voting was handled with a maximum of accurateness and efficiency. The Daily Texan, while somewhat critical of campus election procedures in the past, publicly expresses its appreciation, and congratulations, for the excellent manner in which Alpha Phi Omega, with Livius Lankford and Wendel Hansen as election judges, carried on the long and tiresome tasks of Tuesday and Thursday's balloting.

During the two years that the A. P. O.'s have handled the elections on the campus, an up-to-date election system has been worked out. With assistance from such organizations as Orange Jackets and Mortar Board Tuesday and Thursday, Alpha Phi Omega recorded record votes, counted them at a rapid rate, and came out with a minimum of bad ballots.

To watch the system in operation, it seems near perfect. Early Friday morning, however, one election judge remarked, "Next year, we'll really have a system. We have learned so much from experiences this year."

While winners of the run-off contests were known well before midnight, the recount of the Texan race and the tabulating of official results of the run-off took until shortly after 3 o'clock in the morning.

Friday morning, it was interesting to note that the same election officials, the same counters and tabulators were working at the Round-Up registration and guide tables in the Union.

If every organization on the campus were as willing to give and to serve as is Alpha Phi Omega, the success of any undertaking would be assured.

*This editorial about the election service of Alpha Rho Chapter, which appeared on the front page of "The Daily Texan," April 6, 1940, is one of the finest tributes ever paid to an Alpha Phi Omega project.*



(Continued from page 3)  
Faculty Advisor and his Scout Executive soliciting their ideas and advice.

The president of the preparatory group at the University of Chicago, Edward McKay, was given an opportunity to tell of his organization's program. The outstanding projects reported included a survey of study methods for high school students and the establishing of a Scout Troop in the university's hospital for crippled children.

The conference luncheon was held in the Marott Hotel, with the discussions continuing immediately thereafter. President Bartle called upon Dr. Lester I. Tavel, member of the National Executive Board, who spoke on "Manpower and Service." He recommended putting twice the number of men on the job to get it done in half the time and he pointed out that helping to guard and maintain the principles of Americanism is one of the big opportunities of Alpha Phi Omega.

Brother Bill Parks of Alpha Upsilon Chapter, who last spring served as district chairman in the Membership Round-Up, was called upon to present the Walter W. Head Round-Up Award to Purdue's Alpha Gamma Chapter, the only Indiana Chapter which reached its membership quota. The award was accepted by the five conference delegates from Purdue, headed by President Lewis McCammon, with the assurance that the chapter would not rest on past laurels but would push ahead to greater achievements in the future.

As the discussions continued, hazing and informal initiations were denounced and it was learned that

none existed in any of the Indiana chapters. It was agreed that pledges should be given definite responsibilities in service projects as the principal part of the preparation for membership. President Bartle recommended a fairly short and definite length pledge term, also advising a sound business procedure, stating that the initiation fee is not a serious drawback to those who are seriously interested. An installment plan of payment was suggested for use within the chapters and the revolving loan funds of other chapters were explained.

Brother T. W. "Bill" Lacy, National Field Representative, was called upon by President Bartle to speak briefly to the assembled delegates. Brother Bill emphasized the value of strong, functioning committees to make the chapter program click and he congratulated the delegates on having the most constructive conference he had ever attended.

Brother Sid North then spoke on the duties of the chapter secretary and treasurer and stressed the importance of sending in membership applications, fees and reports promptly so the National Office could give immediate service on certificates, cards and other materials.

Brother C. M. Finnell made the final address of the conference, leaving with the delegates these forceful words, "I know of no finer philosophy of life than the Scout Oath and Law."

President Bartle closed the conference with the fraternity benediction, and thus the first state conference of Alpha Phi Omega in Indiana, a very stimulating and enthusiastic meeting, was ended.

## SPORTS DAY AT TEXAS TECH

### More Than Thousand Students Likely to Enter Competition

The question of who is the champion athlete of Texas Tech, excluding members of varsity teams, will be answered Saturday, May 11, when students compete in Sports Day. This athletic jamboree will be sponsored by Beta Sigma Chapter of Alpha Phi Omega.

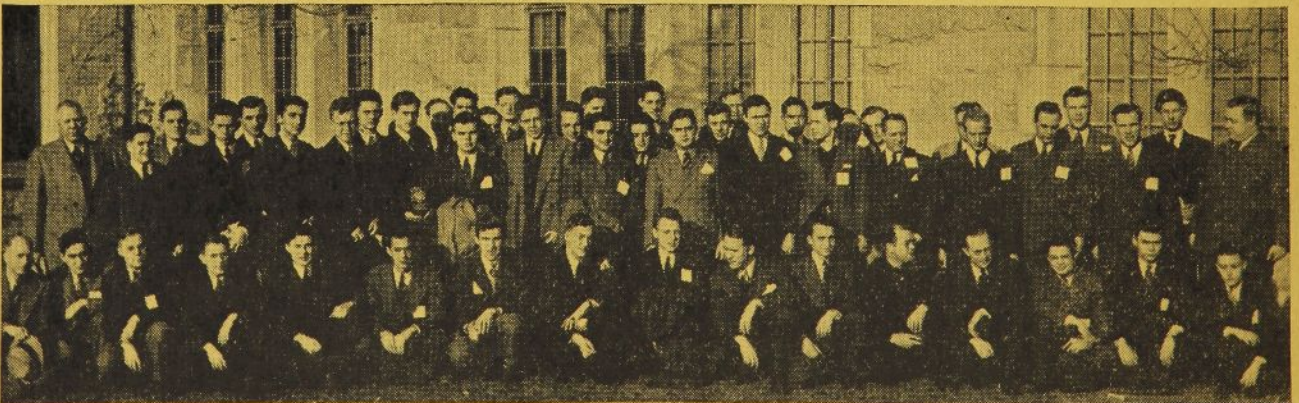
Fifty-two events, ranging from standard track and field contests to comedy competition such as potato and rabbit races, comprise the day's program. Events are divided into four classes, and candidates for the champion title must compete in a specified number of events in each division.

More than fifty prizes will be offered to winning contestants. Merchants of Lubbock are cooperating in furnishing the prizes. A grand prize will be awarded to the champion athlete as determined by a point system. Also on the award list is a prize for the champion four-man team. Any campus organization is eligible to enter a squad.

Members of the varsity football, basketball, track, tennis and golf teams, not eligible for competition in the Sports Day, will serve as officials. The chapter is expecting more than a thousand students to enter the contests.

## "SCOUTS IN COLLEGE"

Jack Lambert of Del Rio, Texas, has recently written an article titled "Scouts in College" in which the activities of Alpha Phi Omega are prominently included.



The delegates from the five Indiana chapters and three preparatory chapters who attended the first Indiana State Conference, March 17, 1940, in Indianapolis.



## GAMMA ALPHA INSTALLED AT THE UNIVERSITY OF WASHINGTON

By Albert O. Weissberg

Howdy, Brothers of Alpha Phi Omega!

From Seattle, the gateway to Alaska and chief city of the Evergreen state, we extend the greetings of APO's up-and-coming chapter at the University of Washington. After two years of preparatory organization, the badge of Alpha Phi Omega has at last taken its place on the campus of the United States' northwesternmost university.

We pride ourselves on the beauty of our school, located on Puget Sound and watched over from the south by the looming white magnificence of famous Mount Rainier. She's a grand alma mater in that way and many others, and our band of ex-Scouts here has long felt the wish to pay back part of our debt of gratitude through the service work of APO. Two years ago, we formed the local fraternity of Beta Sigma Alpha, designed on the scheme of APO, with which to gain experience and a firm position on the campus. That objective was considered achieved by the fall of this year, and on December 8, 1939, Brother H. Roe Bartle installed Gamma Alpha Chapter. Brother Roe's capacity of National President added great interest to the evening, and his speech at the pre-installation banquet was received with enthusiasm by a large group of attending Seattle Scouters as well as the chapter itself. The president was assisted in the installation

ceremonies by members of Alpha Xi chapter at Washington State College, and these men graciously stayed over another evening to conduct initiation ceremonies, due to the lateness of the hour when the other events of the evening had been finished.

The officers installed at that time included:

Albert O. Weissberg.....	President
Everett Ellis.....	Vice-President
Julian Wolfsohn.....	Secretary
George Abendschein.....	Treasurer
Francis Neumen.....	Historian
Dr. John E. Corbally.....	Senior Faculty Advisor

Advisors in addition to the Senior Faculty Advisor are:

Dr. Herbert T. Condon.....	Dean of Men
William H. Botzer.....	Assistant Dean of Men
Dean Newhouse.....	Registrar
M. D. Woodbury.....	General Secretary, University YMCA
Stuart P. Walsh.....	Scout Executive
Duane Woods.....	Assistant Scout Executive

On February 23, 1940, the initiation of a fine group of new members took place, and shortly thereafter a new election of officers was held. This new cabinet, headed by Brother George Mason, was installed by Dr. Corbally, the Senior Faculty Advisor, at a dinner on April 9.

Our chapter is still very young, but we are determined to establish it in coming months as a vital factor in Washington campus life. We have already moved forward in this aim with a highly successful fingerprinting campaign under the leadership of Brother George Abendschein, and service as the ushering corps for all main events of Senior Week is one of several projects lined up for the immediate future.

## TWO UNIQUE PLEDGING SYSTEMS

Two chapters, Eta at Northern Illinois S. T. C. and Alpha Rho at the University of Texas, have reported unique pledging systems which are proving very effective in membership growth. Full details about these will be put into mimeographed form during the coming summer and will be made available to all chapters before registration time in the fall.

## "PRESIDENTIAL MESSENGER"

President Hugh Wise, with the cooperation of Secretary Bob Coonrod, published on April 6 the official annual report of Beta Mu Chapter, titled "Presidential Messenger." It is filled with interesting facts about the first year's activities of APO on the campus of Southwest Missouri S. T. C. at Springfield, and predicts a bright future.

## PRESIDENT'S STUDENT ADVISORS

A recent editorial in the "Daily Californian," it was announced that the members of Gamma Gamma Chapter of Alpha Phi Omega have signed up en masse to serve as "President's Student Advisors." The purpose of the new plan is quoted: "The goal of the PSA, making the new student feel that this is HIS school, is a noteworthy one. For a long time there has been a need for a better coordinated, farther-reaching system of orientation. Now that this is nearing reality, it behooves everyone to get behind the plan and support it."

## NEWSLETTER PUBLISHED BY ALPHA DELTA

The first issue of a new chapter bulletin was published by Alpha Delta at San Diego State on February 14. It is named, "A. P. O. Alpha Deltan," and is devoted to news of chapter interest, reports of projects and announcements of future activities.

Material for the First "Annual Service Edition" of TORCH AND TREFOIL is now being assembled at the National Office.

The deadline is August 10.



The Charter Membership of Gamma Alpha Chapter at the University of Washington, Seattle, installed December 8, 1939.



## ILLINOIS-WISCONSIN-MICHIGAN CONFERENCE LARGEST OF THE YEAR

By Warren Baie, Eta, Conference Secretary

Alpha Phi Omega's largest district meeting of this school year was the Tri-State Conference of the chapters of Illinois, Wisconsin and Michigan, held in DeKalb, Illinois, April 28.

With Eta Chapter as hosts, the conference sessions were held in the Administration Building of Northern Illinois State Teachers College. All chapters in the district were represented by enthusiastic delegations, and included in the group were representatives from three preparatory groups of the University of Chicago, the University of Michigan and the Western State Teachers College, Kalamazoo, Michigan. A total of 160 delegates participated in the conference.

### Welcome By President Adams

The meeting opened with an address of welcome by President Karl Adams of Northern Illinois State Teachers College. National President H. Roe Bartle then took the gavel. Invocation and songs preceded the business of the hour.

President Bartle opened the working sessions by pointing out the important phases of Alpha Phi Omega's program and by emphasizing the need of consistent advancement by all chapters in the fraternity. He showed that the time spent in membership by each brother is short, so it is necessary that every member be really active to insure that our traditions and

## IN MEMORIAM

Fred G. Davie

Alpha Sigma,  
Veteran Member of the  
National Executive Board

John H. Finley

N. H. M.  
Member of the National Executive  
Board, B. S. A.

E. M. Monsell, Sr.

Beta Pi,  
Scouting Advisor

A. H. Bartle

Alpha Pi  
Scouting Advisor

services be perpetuated. The key to good membership, it was pointed out, is good faculty advisors. A chapter can exist and do good work with only one good faculty advisor, but in every case five or more faculty advisors provide a guarantee for a record of service and progress.

To the question, "How many chapters here represented have active executive committees?" five chapters answered "Yes" and the remaining two explained they have used their executive committees to a certain extent but have not taken full advantage of the plan. An executive committee was strongly recommended for the success of all chapters.

Adequate manpower was emphasized as a need to perform all the services that are to be done. Chapter assistance in the organization of new chapters was commended and emphasized as an im-

portant phase of our fraternity development.

### Presidents Study Qualifications

A panel of chapter presidents was conducted by the National President, and first considered the qualifications of a chapter president. Each president in the group gave his thoughts and experiences on this subject; then President Bartle summarized: "Leadership, if qualified, brings results. Harmonious work is the key to chapter progress and this depends upon the president. He must be a human engineer, an organizer."

Question from the floor: "How many feel that men in office sacrifice scholastic standing. All of the presidents answered negatively, pointing out that a well-rounded experience is necessary to complete a college education and that grades alone are not the important thing to be gained from school attendance."

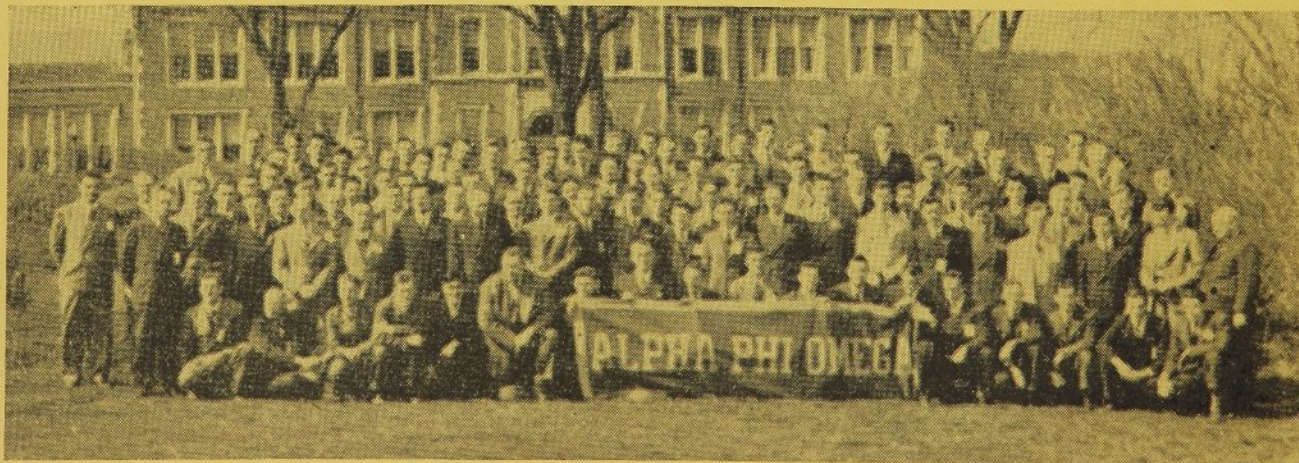
Question to the panel: "What is the function of the executive committee?"

The answers summarized: "To meet frequently outside regular chapter meetings to discuss activities and plan for the future."

At the conference dinner, all visiting delegates were the guests of Dr. M. C. Hayes, National Vice President, and the members of Eta Chapter.

The second panel was for vice presidents, in which the discussion centered on pledging systems. The treasurers' panel which followed, pointed out that the responsibilities of the chapter treasurer are to keep

(Continued on opposite page)



The delegates from eight chapters and three preparatory groups, who attended the Illinois-Wisconsin-Michigan conference in DeKalb, Illinois, April 28.





The participants in the Kansas State Conference of Alpha Phi Omega in Topeka, March 31, including the charter members of Beta Tau Chapter at Washburn College.

### KANSAS STATE CONFERENCE IN TOPEKA

By Tom Evans, Lambda, Conference Secretary

Representatives from all chapters in Kansas, Lambda, Pi, Alpha Beta and Beta Tau, assembled on the Washburn College campus in Topeka, March 31, for their first state meeting. The conference was called to order by Brother Melvin Murphy, arrangements chairman for the host group, who turned over the gavel to National President H. Roe Bartle to conduct the conference sessions.

President Bartle called upon Brother Sidney B. North, National Secretary, to explain the theme of the meeting, INTENSIFICATION, and to outline the six points of the year's growth program.

Following this opening, President Bartle told of the national scope of the fraternity and the potentialities for future service, and he stressed the importance of strong faculty advisorship in conducting successful chapters. The need of a functioning executive committee was emphasized as the second most important factor in the administration of a successful chapter.

A panel discussion by Chapter Presidents brought out the qualifications for this responsibility and explained the three most successful projects of each chapter. Panels for Secretaries, Vice Presidents and Senior Faculty Advisors were conducted to point out the responsibilities of these leaders in the operation of the chapters.

It was a stimulating "working conference" in which every delegate was given opportunity to actively participate. It will certainly result in much growth in the Kan-

sas chapters in the months ahead.

### Beta Tau Chapter Installed

The final event on the program of the Kansas State Conference was the installation of the new Beta Tau Chapter at Washburn College. The degree team of Lambda Chapter of the University of Kansas performed the initiation ceremony, and the installation ceremonies were conducted by President Bartle.

The officers elected to serve the new chapter during its first term are:

Bill Conaway	President
John Robb	Vice-President
Fred Worrall	Secretary
John Corkhill	Treasurer
Barrett Silk	Historian
Arthur Hanni	Alumni Secretary
Earl Woolley	Parliamentarian
Dr. Hugh G. Wales	Senior Faculty Advisor

### ILLINOIS-WISCONSIN-MICHIGAN

(Continued from page 6)

all financial records and to keep the chapter on a budget. Ways of making money other than dues

were discussed, including Coca Cola and candy concessions, stage productions and dances.

In the secretaries' panel it was emphasized that there should be one person to correspond with the National Office. The secretary's job is to keep clear records of all proceedings, communication records, reports and information to the National Office and inform members of all meetings.

President Bartle explained the new publication schedule of the TORCH AND TREFOIL to make the magazine a monthly beginning next fall.

### A Summary

Dr. Irwin R. Hoener, Senior Faculty Advisor of Alpha Alpha Chapter of the University of Illinois, was called upon to summarize the proceedings of the day.

Brother C. M. Finnell concluded the meeting by timely thoughts linking Alpha Phi Omega with college men and their relationships in the destinies of the world. He said, "Character is the crying need in American life. Men who are college-trained and Scout-trained combine the ability and the religious training that makes adequate leaders. Stability is needed on college campuses, courageous, thinking men. America will stand on what college men make of it. If men take to heart the philosophy of the Scout Oath and Law, they have a philosophy that will survive, and combining this background with specialized training in college should build men qualified to lead the nation and be a salvation to the world."



This group from the four Southern California chapters attended the district conference in Los Angeles, December 4, 1939.



# Gleanings from Chapter Correspondence

## MICHIGAN STATE

"Beta Beta's annual 'Use the Walks' campaign has met with such success it has greatly increased our prestige on the campus. We have accepted a novel project which may be suggestive to other chapters. A student artist has made a collection of pencil sketches of campus buildings, and compiled them into a booklet. Alpha Phi Omega is governing the distribution of these booklets in order that they may come into the hands of as many students as possible. Our next big project is the Inter-Fraternity Sing, which has a prominent place on the school calendar. Glee clubs from the various fraternities compete for the Alpha Phi Omega Trophy. The contest is held in the school band shell and serves a capacity crowd. The success of this project is evident from past years."

—William D. Gordon, historian

## UNIVERSITY OF CALIFORNIA

"We plan to have a fingerprinting booth during medical examinations for new students the first week of school next fall."

—John M. Montgomery, Jr., historian

## NORTHWESTERN

"Sigma Chapter is conducting fingerprinting in all fraternity and sorority houses as a part of its campus-wide campaign in cooperation with the F. B. I. Brother Albert Vatter is chairman of the project."

—Ed VanAllsburg, president

## NORTHWEST MISSOURI S. T. C.

"A Scout Troop in the college laboratory school is being sponsored by Beta Upsilon Chapter."

—Fred Davidson, past secretary

## SAN JOSE STATE

"At the start of the spring quarter, Gamma Beta Chapter had a booth for general information, we helped with a job census for the dean's office and also helped in the health office getting records of freshmen."

—Richard Neville, secretary

## DEPAUW

"The fourth annual Green Bar Conference sponsored by Alpha Upsilon Chapter was held Saturday, April 20 on the DePauw University campus. A full report of the meeting will be made available for the Annual Service Edition of the TORCH AND TREFOIL to be published in September."

—Alex Porteus, conference chairman

## SOUTHERN CALIFORNIA

"A moving picture showing the Federal Bureau of Investigation's activities was shown to Trojan students, Friday, April 12. The film sponsored by Alpha Kappa Chapter of Alpha Phi Omega announced the fingerprinting campaign being conducted by the chapter. The drive was a great success."

"A party for underprivileged children was given by Alpha Kappa on April 8. It went over big and other parties will soon be given."

—Franklin Jordan, historian

## SOUTHWEST MISSOURI S. T. C.

"The annual Music Meet, which ended April 13, went over very well. Our chapter helped considerably to make it a success. Mr. Farrar, head of the music department, was very much elated with the work done by the fraternity at the meet."

—Earl E. Woodard, secretary

## INDIANA

"Mu's third annual Eagle Scout Conference was held on our campus April 27 and 28. It was a real success! Last year 74 Eagles attended. This year we had 90. The faculty and university administrators were really behind us. They gave out some real information and instruction and made the convention one the Scouts will long remember. Our own fellows worked plenty hard, too, but we all enjoyed it, and the results justified the labor."

—Harold Medow, president

## CENTRAL Y

"Beta Gamma is building a firm groundwork for future expansion. I feel our chapter is soon to become one of the strongest units of our great fraternity. A well laid program of membership expansion will start to function at the opening of the school term next year and will continue throughout the year. We expect to reach an active membership of 50 by next spring . . . and with the membership growth will come an equal growth in service and fellowship."

—Bob Becker, president

## KIRKSVILLE OSTEOPATHS

"Plans are now being made by the Alpha Omega Chapter in assisting the Women's Osteopathic League who sponsor the annual School Carnival. All the proceeds are given to the school Clinic and are used to furnish physical examination and treatment for needy children."

A formal initiation was held on April 11 in conjunction with the Alpha Phi Omega Chapter of the Kirksville State Teachers College. Previous to the initiation of the twenty pledges a spaghetti supper was served which was followed by a program of entertainment and short speeches by the President and Faculty Advisor from the visiting fraternity."

—A. R. Simon, fraternity reporter

"Forty men attended a splendid and enthusiastic meeting last Thursday evening. We are planning to help in the annual carnival, the proceeds of which go to the children's clinic fund. Starting next Saturday we are backing weekly boxing matches in an effort to raise \$900 towards the purchase of a new x-ray machine for the clinic. We decided to attend church in a group Mothers' Day. Our semi-annual senior banquet will be held May 17. Dr. Faulkner, Scoutmaster of Troop 23, was present and thanked us for the cooperation he is receiving from our chapter."

—Grant Atwell, secretary

## INDIANA S. T. C.

"Plans are being made in Beta Lambda for assisting the Speech Clinic during the coming Speech Conference, and for the annual spring band concert sponsored by the chapter."

—Vincent LaMonica, secretary

## SAN DIEGO STATE

"First on Alpha Delta's list of services for the spring semester was the physical examination of the incoming students. This took two afternoons, and we were able to furnish more than the required number of men, despite the irregularities of registration time. The student operetta, 'Desert Song,' was presented March 29 and 30, and Alpha Phi Omega was asked to handle the ushering. Twenty-four APO men on hand both nights were able to seat the three thousand people in record time with little confusion."

—Donald Major, president

## WISCONSIN

"We have found our current fingerprinting campaign a most important factor in securing closer cooperation among our members. We have had good publicity including pictures in the local dailies and campus paper and a fifteen-minute radio feature program over the state station. Numerous sources have declared Alpha Phi Omega the best publicized organization on the campus, chiefly because it is doing things worthwhile. I have had several persons I did not know come up to me to commend the chapter on the work we are doing. These persons include students, faculty and townspeople."

—Robert D. Goff, historian

## FLORIDA U.

"On April 20, Tau Chapter sponsored the annual Gainesville district Boy Scout field meet. Members will serve as judges in all the events. They also took charge of the planning of the various events. The winning troop will be awarded the Germond Trophy."

"Tau Chapter has completed this semester a project which has long been a dream of its membership. An appropriate appearing flag pole will be placed on the campus. This project was completed largely through the special efforts of Pledge Henry Guy."

"The first big project which Tau has planned for next year is to place an appropriate sign over the entrance of the university. Also it is planned to place a United States flag and the flag of the state in the auditorium of the Florida Union, the student center."

—Don Ed Everette, secretary

## THE CITY COLLEGE, CCNY

"During the period from March 15 to March 31, Gamma Epsilon Chapter held a Boy Scout Exhibit in the Hall of Patriots of the City College. It included items of handicraft, nature lore, equipment and publications covering Cubbing, Scouting and Senior Scouting. It is safe to say that approximately 85% of the 5,000 day session students and 80% of the afternoon and evening session students viewed the exhibit. The material was submitted by troops in Manhattan, Bronx, Brooklyn and Queens so as to truly represent the City of New York. It was received well by the students and faculty."

—Marvin H. Cohn, historian