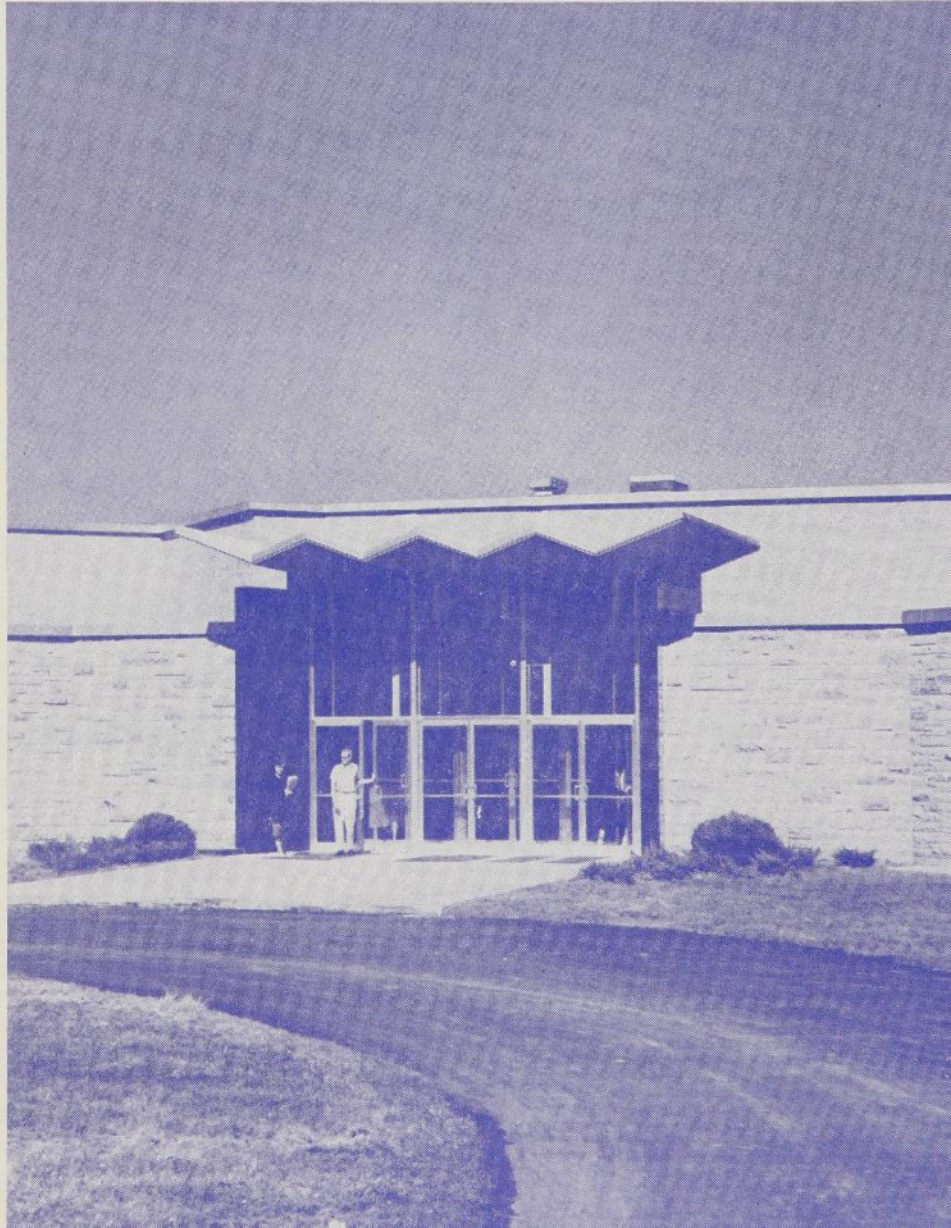
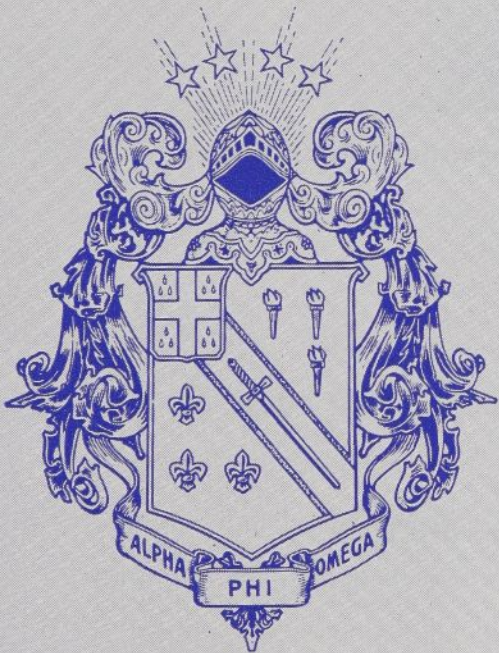


TORCH AND TREFOIL



NOVEMBER, 1961

TORCH and TREFOIL

Vol. 36, No. 6

NOVEMBER, 1961

National Officers of Alpha Phi Omega

William S. Roth Raleigh, N. C.
National President

E. Ross Forman Philadelphia, Pa.
National First Vice President

Dr. Lester R. Steig Palo Alto, Calif.
National Second Vice President

Rev. Frans A. Victorson . . St. Joseph, Mich.
National Third Vice President

Manfred O. Aws, Jr. . . . Milwaukee, Wisc.
National Treasurer

Joseph Scanlon Kansas City, Mo.
National Executive Secretary and Editor

J. D. (Jack) Armstrong . . . Greeley, Colo.
Elmaar H. Bakken . . . New Brunswick, N. J.
Prof. Harry C. Barnett . . East Lansing, Mich.
Dr. Glenn R. Barr Oxford, Ohio
Dr. H. Roe Bartle Kansas City, Mo.
R. L. Brittain Auburn, Alabama
George F. Cahill Pittsburgh, Pa.
C. J. Carlson Riverside, Calif.
M. R. Disborough Louisville, Ky.
Benjamin F. Fay Philadelphia, Pa.
Dr. Thomas T. Galt . . . Spartanburg, S. C.
Irwin H. Gerst Canoga Park, Calif.
Zenon C. R. Hansen . . . Lansing, Michigan
Robert J. Hilliard Lubbock, Texas
Dr. Lawrence L. Hirsch . . . Chicago, Ill.
Frank R. Horton Bangor, Pa.
Dean Lewis N. Jones . . . Lubbock, Texas
Stanley Livingston Ruleville, Miss.
H. Jack Mayr Milwaukee, Wisc.
Dr. Henry S. Miller
Huntington Station, N. Y.
Sidney B. North Evanston, Ill.
Dean Arno Nowotny Austin, Texas
Dean Glen T. Nygreen . . . Kent, Ohio
Rev. Robert J. Payne . . . Mt. Vernon, N. Y.
Gerald M. Plessner St. Louis, Mo.
Dr. Harold F. Pote La Jolla, Calif.
Prof. Kent D. Shaffer . . . Pittsburgh, Pa.
Robert L. Slater, Jr. Chicago, Ill.
A. G. Spizzirri Kansas City, Mo.
Ronald R. Turgeon Bridgeport, Conn.
Dr. Delmer H. Wilson
New Brunswick, N. J.
Dr. Ray O. Wyland Tujunga, Calif.

TORCH AND TREFOIL is issued regularly seven times a year, monthly, October through May except January from Office of Publication, 1100 Waltower Building, 823 Walnut Street, Kansas City 6, Missouri. Printed by Smith-Grieves Company, Printers & Lithographers, Kansas City, Missouri. Second Class Postage paid at Kansas City, Missouri. Subscription price \$1.00 per year.

EDITORIAL STAFF

Joseph Scanlon, Editor and National Executive Secretary. Gerald M. Plessner, Associate Editor. Contributing writers, Manfred O. Aws, Jr., E. Ross Forman, Thomas E. Walsh, Frank A. Ward II, Terry Shoemaker, Otis Shearer.

On Our Cover—

On Our Cover—Main entrance to the University of Kansas City's new \$1,500,000 University Center building. The ballroom-banquet hall will seat more than 1,000 persons. The University's Alpha Eta Chapter, established in 1934, will be one of the best Chapters to the December, 1962, National Convention meeting in Kansas City, Missouri. The new Center is one of the finest in the United States. It was dedicated September 29, 1961.

1. Our Cover . . .

2. Table of Contents . . .

3. New Assistant Chief Scout Executive, Robert L. Billington

4. Your Chapter Can Have Impressive Rituals . . .

National Convention Representation.

Select Chapter Officers carefully.

5. Gamma Xi Celebrates Twentieth Anniversary . . .

6-7. As the Camera Sees Us . . .

8-9. Feature Chapter—Chi, U.C.L.A., 1931-1961 . . .

10. Alpha Beta Chapter's Forward Look . . .

The Pennsylvania State University's Chapter tells how.

11. Conferences and Seminars— Florida and Minnesota . . .

12. Chapter News— The Top 52 Chapters in the Nation . . .

Robert L. Billington Becomes Assistant Chief Scout Executive For the United States



ROBERT L. BILLINGTON

"My fervent wish for every A.P.O. officer at the beginning of this new year is that he will give dynamic leadership to the chapter's membership program. Leadership, service and fellowship are needed as never before. Let's be sure every eligible young man on every campus is given an invitation to share in the fellowship and service opportunities of our great fraternity."

Robert L. Billington, a member of Alpha Phi Omega since 1939, has just been appointed Assistant Chief Scout Executive of the National Council, Boy Scouts of America. He has been the Scout Executive of the Greater New York Councils, comprising the five boroughs of New York City, serving more than 124,000 boys in 1960. This is the largest council operation in the United States.

Brother Billington's A-Phi-O experience began in 1939 when he helped organize Beta Chi Chapter at Oklahoma City University. His service to the Fraternity continued as Scout Executive at Minneapolis, Minnesota, from 1946 to 1952 and as Regional Executive for Region Four from 1952-1957. This region comprises the states of Ohio, Kentucky and West Virginia. He became the Greater New York Councils Executive in 1957.

Brother Billington is currently a member of the National Advisory Committee for Alpha Phi Omega. He has participated and shared in many seminars and A-Phi-O conferences, both local and national.

Mr. Billington attended the University of Tennessee. He served as a leader to the World Scout Jamboree in Austria in 1951. He is an active Rotarian and has served as a deacon and elder in his church.

Mr. Billington and his wife, Amanda, have two married daughters, Mrs. John J. Boettner, Akron, Ohio; and Mrs. Douglas Timerman, Jr., Hopkins, Minnesota; twin sons, Jack and Jim, who are High School Juniors and two granddaughters and a grandson.

Your Chapter Can Have ... Impressive Rituals

By E. P. "PENNY" JONES

Past President, Mu Mu Chapter, Oglethorpe University, Georgia

In every endeavor it is important that you start off on the right foot. So it is in Alpha Phi Omega, for an impressive initiation experience can do more than anything else to inspire a man to service.

It's not easy to conduct an impressive ritual. Planning, organization, and co-operation are necessary. Interest on the part of the ritual team is a must. Everything has to be planned down to the smallest detail. Participating Brothers and Advisors should rehearse and memorize their parts.

Preparations

The chapter Sergeant - At - Arms should start ritual preparations by gathering and surveying all of the ritual equipment. If your chapter utilizes special props, make sure that those props are in working order. If your chapter has no permanent equipment, or if the equipment that it has is out of date or badly worn, spend some time developing a new set of materials.

Enlist the chapter or campus artist and get him to paint a set of the necessary emblems. Embellish your ritual and make it impressive so as to give a lasting effect upon your Brothers, both old and new!

Rehearsal

Insist on at least two rehearsals with full ritual team! Hand out the Ritual Manual early and encourage the participants to study and prepare for their part.

At each rehearsal "talk" through the ceremony two or three times. Let each man get a good understanding of when he talks and what he does. Conduct at least two full-dress rehearsals "walking" through the ceremony and finalizing all physical arrangements.

In all probability, if you rehearse adequately, it will not require too much effort to present the ceremony from memory. Certainly, this is the best method!

Physical Arrangements

Obtain the best available location for your initiation. Insure ventilation and have chairs, tables and props in order well ahead of the arrival of the first pledge or Brother. Prepare a good system of light control and highlight the presentation with special lighting arrangements.

Provide robes for your ritual team members. Obtain robes for the chapter or borrow choir robes for the occasion. Add a note of individuality by pinning or sewing a fraternity emblem on each robe.

Make sure that every Brother is on hand and understands his part in the program.

The Ceremony

Maintain an atmosphere of dignity and sincerity at all times. Require complete silence and attention from every observer. As each person takes his turn at speaking, he should move forward a step and speak clearly.

Follow with Fellowship

Schedule your initiation to membership so that you can move right on to a fine restaurant for a banquet with all the trimmings! The meal doesn't have to be expensive—it's the company that counts!

Most colleges and universities have a spot on campus or nearby where a private room can be reserved for little or no cost. The chapter Fellowship Committee should reserve such a room and then establish an atmosphere conducive to Alpha Phi Omega fellowship. Decorations, banners and emblems are the order of the evening!

After the meal, a short program including group singing, the installation of new officers, the introduction of new Brothers and a challenge by a campus or Fraternity personality are in order.

Be sure to invite members of your school's administration to the banquet. Also extend a personal invitation to all of your chapter Advisors, to your Presidential Representative and to the Fraternity National Executive Board members near your chapter.

SELECT CHAPTER OFFICERS CAREFULLY

By GARY B. CLARK, Past President
Gamma Theta, University of Colorado

Twice each year, the strength of our program is tested when new officers must be elected. It is at this time that the leadership principle of our fraternity becomes a matter of pressing importance. Not only are leadership

and initiative required from old officers and prospective officers, but even more so are these two essentials required from every brother who feels pride in our organization and who has pledged himself to service to his fraternity, campus, community, and nation.

There is not one office in our fraternity that does not offer a challenge at this time, whether it be sergeant-at-arms or president. If you are interested in meeting such a challenge and serving your fraternity, a fraternity without equal on this campus, the highest service and tribute you can pay to our program will be through attending elections.

National Convention Representation a Must For Your Chapter!

Speakers of national prominence! Outstanding training programs! Unlimited fellowship opportunities! Plans look great for the next National Convention!

The 17th National Convention of Alpha Phi Omega will be held at Kansas City, Missouri, in December, 1962. The way to make sure that your chapter is represented is to start planning (and saving) now!

According to the National Constitution, your chapter is entitled to two voting delegates. Additionally, as many nonvoting delegates as possible can and should come to the Convention!

Convention Fund

If your chapter is "on the ball," you'll start a Convention Fund to aid your voting delegates. Start putting money aside to help finance their travel, food and lodging costs.

Why Be Represented at Convention?

The National Convention is the top legislative body of the Fraternity. It elects National Officers and decides basic Fraternity policy. The Convention is highlighted by outstanding speakers and impressive presentations. A top-notch chapter leadership training program is planned. Fellowship will be the Convention byword. Your chapter cannot afford to miss the Convention!

Be well-represented by both voting and nonvoting delegates! Remember that both the chapter and the individual Brother benefit by attendance at the Convention. The National Convention is the high point of Alpha Phi Omega membership. Plan a large delegation now!

Gamma Xi Celebrates Twentieth Anniversary

By WILLIAM J. GRIFFITH
Gamma Xi, Rockhurst College
Kansas City, Missouri

The Twentieth Anniversary of Gamma Xi Chapter of Rockhurst College, Kansas City, Mo., is being celebrated this year. Since the chapter was founded it has grown to be one of the most active in the Midwest. This past year has indeed been one of our busiest with many service projects and official ceremonies. Our Initiation Dinner Dances had particular significance this year in that we received our Twenty-Year plaque, and two new life members were presented their certificates. In the celebration of our Twentieth Anniversary we are fortunate to have three of the chapter's charter members, H. B. Kies, Paul D. Arend, and Rev. William C. Doyle, with us as members of the Rockhurst College Faculty.

Today Gamma Xi occupies a unique place on the Rockhurst College Campus. It has become the right hand of the administration with its many service projects.



GAMMA XI LIFE MEMBERSHIPS

Life memberships being presented to Larry Lampton and W. J. "Bill" Griffith by A. G. Spizzirri, National Executive Board Member, at the Gamma Xi Twentieth Anniversary Dinner, Rockhurst College, Kansas City, Missouri.

Gamma Xi has always received the fullest cooperation from the Rev. Joseph E. Gough, Dean, and Rev. Charles P. Cahill, assistant Dean. We have extended our service projects to include assistance with Freshman Orientation, co-ordination of Visiting Scholar Lectures, and have become the media between student activities and the administration. Gamma Xi also carries on the traditional service projects of operating Lost and Found, providing TV sets for World Series Games, ushering at all assemblies, and checking costs for all meetings and assemblies. The Very Rev. Maurice E. Van Ackeren, President of Rockhurst College, said on the occasion of our Twentieth Anniversary:

"The Rockhurst chapter of Alpha Phi Omega has enthusiastically accepted every service opportunity suggested by the college faculty and administration over the past twenty years. And they have initiated and carried out many worthwhile projects completely on their own.

"The cheerful and efficient services of the men of A.P.O. have made a contribution to nearly every phase of our college life, and have been an important factor in achieving the good community reputation which Rockhurst currently enjoys.

"On behalf of the Faculty and Board of Regents, I extend a hearty word of congratulations to Gamma Xi Chapter on its twentieth anniversary, and the sincere hope that your College and your Country will continue to benefit from your dedication and your enthusiasm through all the years ahead."

Gamma Xi participated in the CARE Crusade in an all-out effort to help the needy people of the world. The United Fund was also handled by the chapter and a large sum of money was given to the National Organization. One of the chapter's unique projects takes place on the K. C. Area Council University of Scouting Day. On that day more than 600 Scout Leaders assemble on the Rockhurst College Campus for training sessions and talks. Gamma Xi registers, serves as guides, and participates fully in making this conclave a tremendous success.

Our chapter was in Philadelphia campaigning to get the '62 convention in Kansas City. We succeeded. Theta Eta and Alpha Eta Chapters in Kansas City will share with us as hosts.

The primary purpose of A.P.O. is service, but Gamma Xi members feel that there should be an organized Fellowship program. The chapter sponsors Initiation Dinner Dances, smokers, and drag-stag get-togethers each year. Charles Braddock, President, says, "Each chapter should have a complete fellowship calendar since we desire to build men who will fit into our modern society and help stop its decay."



ANNIVERSARY DINNER

Scene at the 20th Anniversary dinner of Gamma Xi, Rockhurst College, Kansas City, Missouri. Guests at the head table include, left to right, Father Joseph Gough, S.J., Dean of the College, Mrs. A. G. Spizzirri, and Brother A. G. Spizzirri, the guest speaker, representing the National Executive Board.

Gamma Xi is very fortunate in having a fraternity office provided by the administration in the new Massman Hall Student Union Building.



Leaders of Epsilon Psi Chapter, Kent State University, are shown assembling career packets for the Akron Scout Council Explorer Career Day held there last May. This service will be repeated next spring.

Left to right are Brothers Jim Walker, Tom Marsh, Bill Goga and Don Clarke.

Philmont Scout Ranch, America's largest and most extensive National Scout reservation, is located at Cimarron, New Mexico. Staff selections for the 1962 summer season get under way in January. Congratulations to these outstanding A-Phi-O men, many of them chapter presidents, who served last summer.

Shown in the photograph are: Back row, left to right, Timothy Johnson, Luther College; Harold Russell, Indiana State Teachers College; Edward Shea, Indiana State Teachers College; Robert Mahn, Jr., Ohio University; G. Frederick Denton, Vanderbilt University; Ned Gold, Jr., St. Louis University; E. O. Clemmons, Assistant Director of Camping.

Middle row, left to right, Richard Bolton, Brigham Young University; Roger Smarr, University of South Carolina; R. Dewayne Ikenberry, Eastern New Mexico University; James Thornbury, Northeastern State College; Wilson Hepler, North Carolina State College; Charles La France, University of Kansas; Frank Estes, Yale University; Patrick Washburn, Baylor University.

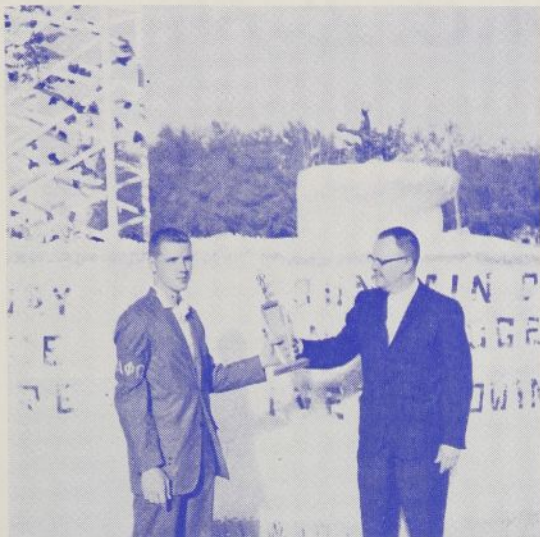
Front row, left to right, Timothy Hoagland, Georgetown University; Chris Luna, Southwest Texas State College; Richard Phillips, Miami University; Jack L. Rhea, Director of Camping; Douglas Trevett, Mississippi State University; Harold Matkin, Northeast Missouri State College; James Smith, University of Houston.

A-Phi-O 1961 Philmont Staff Men



Brothers Paul Bertan and Bill Stromer, in foreground, carrying Touchdown VII, Kansas State University's Wildcat mascot. Just another of the many services of Alpha Phi Omega, now in its 31st year at K-State.

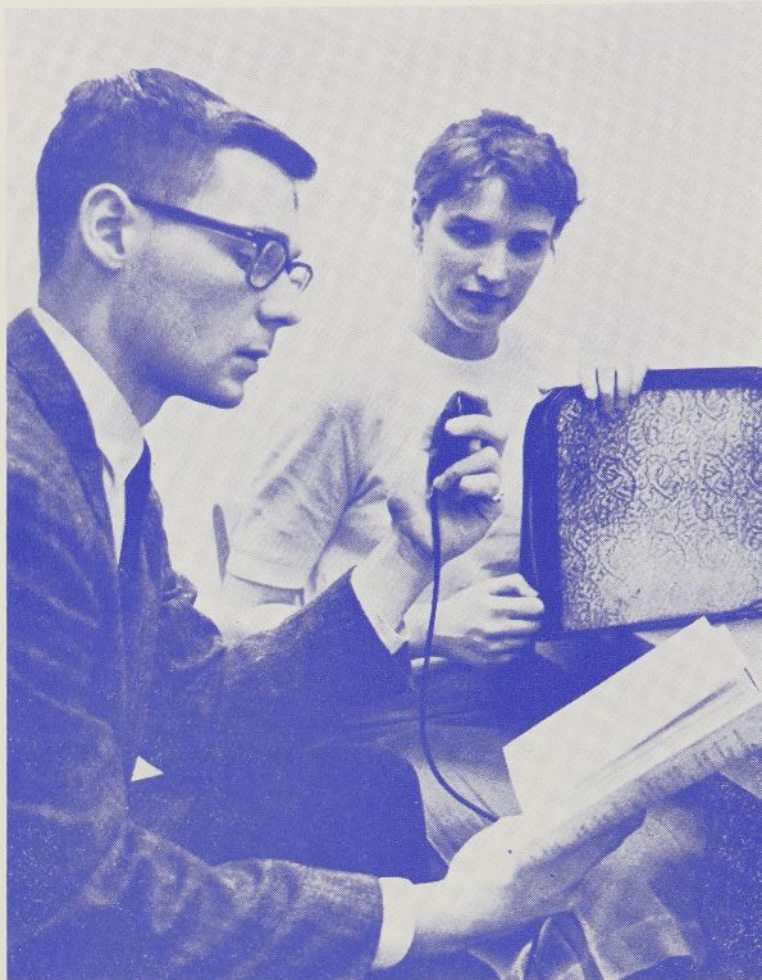
Nu Beta Chapter, Hope College, Holland, Michigan, won first place in its division of Holland's World-famous Tulip Time Parade. The chapter built and entered the float for Hope College.



Brother Bill Seyfarth, float chairman, receives the first place award from parade chairman Mr. Van Valkenburg.



Left to right, Brothers Peter Paulsen, Ralph Herron, William Seyfarth, and Jack Millard, standing in front of the float.



Ed Krill, Service Chairman for Eta Rho, Marquette University, takes his turn as a campus "reader" to assist a blind student with her studies. Textbook material is being read and recorded on tape.

Here's a photo of the Used Book Exchange of Gamma Iota, Brooklyn College, Brooklyn, New York, now in its 14th year of operation. They dispose of more than 15,000 books yearly. Write them if you plan a Used Book Exchange. The current Chapter President is Howard J. Wechsler, La Guardia Hall, Brooklyn College.



Feature Chapter...

Chi Chapter, U.C.L.A.

By Harold Gelfand, Publicity Co-ordinator

November 13, 1961, will be a big day for the members of Chi Chapter at the University of California at Los Angeles. That date will mark the thirtieth anniversary of Chi. It was on November 13, 1931, that Brother Theodore Pfalsgraph, the editor of the "Lightbearer," installed the first officers of Chi Chapter, bringing the grand total of Alpha Phi Omega chapters to twenty-two. Brother Robert Lamott was installed as President, and Brother Philip Lukel as Pledge-Master, in charge of expanding the membership of the new chapter. Brother Lamott is now Scout Executive at Walla Walla, Wash.

During the early years of Chi's existence, most of its attention and activities were devoted to the Scouting movement. The early scrapbooks mention various fellowship activities. There was great interest in outdoor activities, such as hikes in the mountains, and ski trips. We even find pictures of some of the original actives out sailing on the Pacific.

From the outset, the Chapter attempted to acquaint the entire student body of U.C.L.A. with the aims and policies of A-Phi-O. They did this by holding open meetings to which various faculty members were invited as guest speakers. These were quite successful in building up the chapter and bringing new Brothers into the folds of A-Phi-O.

It was during the years 1938-1939 that a significant change took place in the policy of Chi Chapter. No more were the Chapter's interests to be devoted solely to scouting. Write-ups in the campus newspaper, the *Daily Bruin*, re-

ests to campus activities and campus service projects. It started off by helping to supervise and control campus elections.

The war broke out in 1941. In the ensuing years Chi did its part to help the war effort. It assisted the Civilian Identification Program in fingerprinting all faculty and student volunteers. But the draft hit Chi Chapter as hard as it hit



Chi Chapter actives operating a booth at U.C.L.A.'s annual Mardi Gras.



Brothers Al Krotoski and Larry Kauffman promoting the Mardi Gras King contest.

placed such terms as "Scouting Group" and "Scouting Fraternity" with such terms as "Service Group" and "Service Fraternity."

The Chapter began to devote more of its time and inter-

ests to campus activities and campus service projects. It started off by helping to supervise and control campus elections. The war broke out in 1941. In the ensuing years Chi did its part to help the war effort. It assisted the Civilian Identification Program in fingerprinting all faculty and student volunteers. But the draft hit Chi Chapter as hard as it hit the rest of the nation. The Chapter was forced to deactivate due to the great loss of manpower. The war brought Part I of the development of Chi Chapter to a close. It had been a period of growth and development—a period during which they had crystallized their goals. In the words of one of the Chapter's early historians, during this period, "Chi Chapter has made excellent progress. We have successfully carried through the policy determined and have built a solid foundation for the future members to build upon."

The war ended and once again there was a large male population on the U.C.L.A. campus. On November 9, 1946, just four days before the anniversary of Chi Chapter, Brother George Lamb sent out a letter of invitation inviting all who were interested to join in the reactivation of the Chapter. In the letter he reiterated the purpose of Alpha Phi Omega: A "Service Fraternity of Scout Trained college men to participate in a planned program of service." The Chapter started out on its rebuilding program with thirteen members and two faculty advisors, Dr. L. K. Koontz and Paul Frampton.

One of the first projects of the newly reorganized Chapter was a program of "Keep Off the Grass." The various lawns at U.C.L.A. had more or less been converted into a series of goat paths, by short cut-minded students. In the end this project was an unqualified success. This first project helped to put Chi on the map again as an organization that could be relied on to do a good and thorough job.

One of the members of which Chi Chapter is most proud

is C. J. Carlson, who was initiated May 16, 1937. He was one of our first Scouting advisors. He has maintained his association with A-Phi-O since then. He is now a holder of the National DSK and a member of the National Executive Board.

During the past few years Chi Chapter has had quite an extensive and varied service program. Chi's biggest project would have to be the Ugly Man on Campus contest, held every year. The money from the contest is given to a worthy charity. In the fall of 1959 it was decided that something needed to rejuvenate interest in the contest. The Chapter bought a new trophy, a monstrous thing, standing four feet, seven inches tall, and making it the largest trophy on the U.C.L.A. campus. The trophy was such a drawing card that by the end of the contest we had smashed all previous contest records for the U.C.L.A. campus. The Chapter had taken in over \$1,200 to be handed over to the Muscular Dystrophy Association.

The Chapter's big project during the spring semester is



Chi Brothers Mike Goode and Stan Struhl assist a student to find a ride to campus.

the sponsoring of the Mardi Gras King contest. Students pay a penny a vote to choose the King of Mardi Gras from members of the Faculty and Administration of Campus. Proceeds from the contest go to the University Summer Camp for Underprivileged Children.

Chi Chapter is very much interested in maintaining campus traditions and building up spirit on the U.C.L.A. campus. One of the few campus traditions that has lasted through the years has been that of the "Big C." Until three years ago there was a big C painted on a hill to the west of the campus. However, in 1959 the hill was torn down to make way for the erection of new student dorms. The members of Chi took over. They built a temporary papier-mache "C" on a hill just below the dorms and painted it blue. Then they took part in campaigning on campus for a gigantic cement "C" to replace the temporary one. Permission was finally granted to build the "C." The building and grounds crew were to supervise, but the students were required to dig the "C" out of the ground and to help pour the cement. Once again Chi came through with enough manpower to keep the project going. At the same time, they manned a booth on the campus and raised over \$150 for the building of the "C." They then took part in a vigorous campaign to "Keep the BIG 'C' Blue." Thanks

to Chi Chapter, the 32 by 48-foot cement "C" is now firmly embedded in the U.C.L.A. campus.

Chi Chapter has done many other things to bolster U.C.L.A.'s campus spirit. In the past they have run rooters' buses to all home football games, bringing hundreds of students to cheer the football team to victory. At the games they pass out spirit sheets to all rooters, containing the songs and yells of the school.

Until last year, Chi Chapter sponsored Boy Scout Troop No. 36. In the Spring of 1960, the Chapter's pledge class invited Troop No. 36 for a Sunday of fun on the U.C.L.A. campus. A swim meet was held with all members of the troop participating, and members of the pledge class officiating. The day was topped off by a barbecue where both scouts and pledges alike gorged themselves on hot dogs and drinks.

The Chapter has performed many other services, too numerous to mention. They maintain a Car Pool file on campus available to all students. They help with sign-ups at the yearly Red Cross Blood Drive. The Chapter has spent various week ends at Uni Camp to prepare the camp for the summer. They help with registration at the beginning of each semester. They assist at Freshman Orientation. They stay up all night to guard the floats for Homecoming Parade. They usher for Spring Sing, both on campus and at the Hollywood Bowl.

Along with these varied service projects, they do not forget fellowship. They participate in retreats and mid-semester trips. The big fellowship activity of the semester is the Pledge-Active Party, where the pledges and actives get to know each other on a social basis. The semester is crowned by the Semi-Annual Banquet.

This year, along with initiation of new members and installation of officers, the Banquet will feature a celebration of Chi's thirtieth year. Although 30 means "the end" in newspaper language, Chi plans to make 30 a beginning of even bigger and better things.

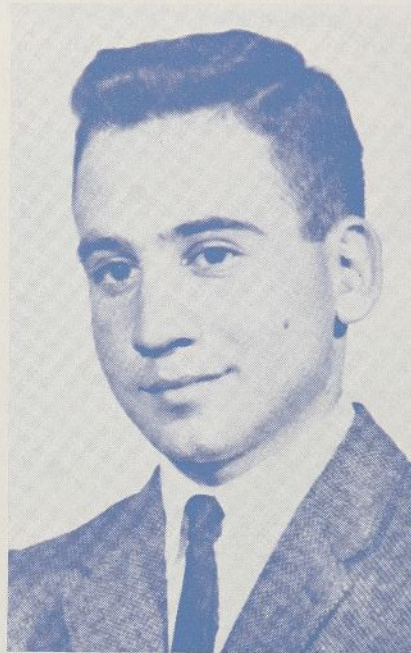


Pledges Jack Wetter, Bob Lingard and Ed Hermesen collecting money for the Uni-Camp.

These excellent campus programs which are being conducted by Alpha Phi Omega Chapters are an inspiration to all who come in contact with them. A-P-O brothers are inspired by their success in the work, and college officials are gratified by the results achieved by the long hours of diligent effort. Expanding enrollments and new horizons offer a rewarding future for Alpha Phi Omega!

Alpha Beta Chapter's Forward Look

By Earl Gershenow
Past President, Alpha Beta
The Pennsylvania State University
University Park, Pennsylvania



EARL GERSHENOW

With an eye toward the future, Alpha Beta chapter implemented a new and dynamic approach to fulfilling the purposes of the Fraternity. This approach is based upon sound administrative principles. They include establishing and maintaining a well-defined and clear chain of responsibility and division of labor, committee integrity, and high standards of performance, keeping in mind that the committee system is a major key for the achievement of effective results, and that an organization can be no more efficient than its base element, the individual.

The new organizations consist of six elected positions: president, vice-president, secretary, treasurer, alumni secretary, and historian. There were previously two vice-presidents, corresponding secretary, and sergeant-at-arms in addition. The consolidation and reduction of elected positions eliminated nonfunctional offices, allows for more effective coordination and communications among the executive committee, places more prestige and commitment upon the office holders, and creates keen competition among the office seekers. The result is high standards of performance by qualified and proven leadership.

The pledgemaster, project coordinator and sergeant-at-arms is appointed by, and under the direct supervision and guidance of the president. Position by appointment makes it easy to remove inefficient personnel swiftly.

The reorganized committee system includes six committees. They are publicity, program, scouting, membership, campus and community. Under the old system, there was a project and social committee. The program committee has assumed the activity of these two committees. All active members are assigned to committees. This is done by the president who also appoints committee chairmen. The vice-president is responsible for the supervision and direction of the committee system. In the past, this responsibility was divided among three vice-presidents. The superstructure proved top-heavy, inhibiting the efficient functioning of the chapter.

Committee chairmen are responsible to the vice-president, and the project

chairman (a committee chairman or member of the respective committee) is responsible to the project coordinator and committee chairman (the committee chairman and project chairman may be the same person). The vice-president is responsible for the operation of the committee system as a whole, whereas the project coordinator is concerned with specific projects and statistical data.

Competition is promoted among the committees through a work chart, attendance being taken by committees as well as by individual membership. Attendance is insured through the chapter mobilization plan, which consists of the vice-president contacting the six committee chairmen and pledgemaster, who in turn communicate with their members. Only active members are assigned to committees. It is the duty of the committee chairmen to keep the vice-president informed on the strength, morale, and capability of their respective committees, and to report anything which would influence their effectiveness.

The pledge class is integrated into the committee system while in the neophyte status, in order to insure their continued interest in the organization and effect a smooth transition for the pledges.

The pledge program consists of a ten-week series of pledge tests, with stress on the development of consciousness toward the national and sectional organization as well as that of the chapter. There are no minimum hours to be completed. Brotherization is dependent upon the whole person, not on the pledge tests or number of hours filled.

Alpha Beta chapter has undertaken the following projects since December, 1960, in addition to its reorganization:

1. Eidophor questionnaire—to determine the need and desire by the students to keep an experimental, closed-circuit television system—for the University Administrative Division of Academic Research and Services—completed.

2. Orientation Committee Evaluation Analysis to evaluate the spring orientation program—for the University Orientation Committee, a joint student-University administration committee—completed.

3. Nittany Mountain District First Aid Meet — self-explanatory — completed.

4. Questionnaire collection—questionnaire relating to the students' desire for a university bookstore—for a student government committee—completed.

5. Juniata Boy Scout Council First Aid Meet — self-explanatory — completed.

6. District Training Program (Boy Scout)—self-explanatory—continuous.

7. Nittany District Order of the Arrow Election—supervision—current.

8. Bloodmobile — registration — for Red Cross—completed.

9. Career Day Service—to set up and take down displays of business concerns—for the University and student government—current.

10. Professor Snarf Contest—man election booths for most popular professor — World University Service — current.

11. Seven Mountain Scout Camp Project—to improve camp—planned.

12. Orphan Picnic — self-explanatory—for local orphanages—planned.

13. Extension of Alpha Beta chapter to other commonwealth campuses—planned.

Iota Rho Hosts Florida Leadership Conference

By **ROGER SHERMAN**,
Corresponding Secretary

Iota Rho of Alpha Phi Omega proudly served as host in the recent



Florida Leadership Conference speakers and hosts included, left to right, Dr. E. L. Chalmers; Miss Jane Adams, Guest of Honor; Roger Sherman, Chapter President; Mr. Frank Chase, National Presidential Representative.

Leadership Training Conference for the Florida area. Besides the many Florida brothers in attendance at The

Florida State University, Georgia was represented by brothers from Nu Epsilon Chapter of Georgia Southern College. Mr. Frank Chase, district Presidential Representative, was on hand representing the national offices.

The meeting, conducted at the university lake resort, the Reservation, featured swimming, volleyball, and canoeing, and many other sports.

The highlight of the week-end took place at the banquet which served the dual purpose of the formal end of the conference, and the celebration of the completion of ten years of dutiful and outstanding service of Iota Rho on The Florida State University campus. Dr. E. L. Chalmers, Iota Rho Advisory Committee Chairman for four years, and professor of psychology at F.S.U., spoke on the need of Alpha Phi Omega on the college campus, mentioned the desire to be nonconformists in an age of conformity by helping others in a time of selfishness. The conference had been planned to commence on the charter anniversary date of Iota Rho. Guest of Honor at the

banquet was Miss Jane Adams, who was presented with a corsage for her long years spent in assisting Iota Rho.



Dr. E. L. Chalmers, Advisory Committee Chairman, addressing IOTA RHO, The Florida State University, Tallahassee.

Miss Adams has been Director of the Longmire Building where Iota Rho has had its offices for all of its ten years. Miss Adams referred to A-Phi-O as her "favorite campus organization."

North Central Section Leadership Seminar

Gamma Psi Celebrates 20th Anniversary

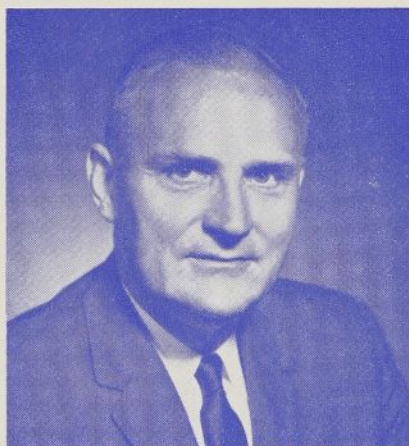
By **Fletch Tyler**, Sectional Reporter
Gamma Psi, University of Minnesota

The North Central Section of A Phi O held its spring Leadership Seminar, Saturday afternoon, April 22, 1961, at the University of Minnesota. The Section also helped Gamma Psi chapter celebrate its 20th annual Charter Day Banquet at which the new University of Minnesota President, Dr. O. Meredith Wilson, was initiated into membership.

Attending the seminar were representatives from Iota Tau chapter at St. Olaf College in Northfield, Minnesota; Theta Nu at Hamline University in Saint Paul; Gamma Psi in Minneapolis; Eta Kappa at Stout State College in Menomonie, Wisconsin.

Keynoting the Leadership Seminar with a talk on the "Principles of Alpha Phi Omega" was a Charter member of Gamma Psi, Orly Thornsjo.

Fred Vihovde, newly installed president of the Twin City Area Alumni chapter, led the first training session on "Chapter Organization and Administration." Subject of the second session was the "Chapter Program," led by Don Springborg, past president of Theta Nu. Hal Strom, chairman of



Dr. O. Meredith Wilson, President of the University of Minnesota, became a member of Gamma Psi Chapter April 22, 1961, in a formal ceremony preceding the chapter's 20th anniversary observance.

the advisory committee of Gamma Psi, directed "The Advisor" session.

"Membership and Rushing" was the topic conducted by Gary Rolloff, Membership Vice-President of Iota Tau. Membership Vice-President Tom Ringhofer led the seminar on "Service Projects."

Particularly noteworthy were 10 representatives from two chapters petition-

ing for APO charters, Mankato and Duluth.

Second highlight of the day was the initiation of three new men into the ranks of Gamma Psi, Bill LeDuc, Bill McPherson, and University President O. Meredith Wilson, followed by Gamma Psi's 20th annual Charter Day Banquet and the installation of officers.

The new Gamma Psi officers are: Roger Isenberg, President; Tom Ringhofer, Membership Vice-President; Bob Iverson, Projects Vice-President; Bob Schwegler, Program Vice-President; Jim Traver, Treasurer; Henry Shaw, Recording Secretary; Dave Paskewitz, Corresponding Secretary; Dennis Buer, Historian; Craig Kissock, Sgt.-at-arms; and Lynn Dewees, Alumni Secretary.

Guest speaker for the event whose topic was "Onward and Upward" was none other than A-Phi-O's new, likable National Executive Secretary, Joe Scanlon.

Special thanks to Harvey Anderson for arrangements; Bill Cook, chairman of the Leadership Seminar; Dave Paskewitz, banquet toastmaster; and all those who conducted the five training sessions.



CHAPTER NEWS



These 52 Chapters Led the Nation in the 1960-61 University Year

By **GEORGE F. CAHILL,**
Chairman, National Membership Committee

Leadership, Friendship and Service, reflected in the number of Pledges and Initiates secured by these 52 outstanding chapters, deserve a National "Well Done" from all of us. Let's make this university year the greatest ever. We can do so if every Pledge replaces himself with a Pledge in the next class. Let's go, A-Phi-O.

8,000 PLUS STUDENTS

1. Alpha Rho, University of Texas
2. Beta Sigma, Texas Tech
3. Delta Gamma, Ohio University
4. Eta Rho, Marquette University
5. Alpha Alpha, University of Illinois
6. Alpha Beta, Penn State University
7. Iota Rho, Florida State University
8. Delta Nu, Yale University
9. Alpha Gamma, Purdue University
10. Delta Rho, Rutgers—The State University (New Brunswick)
11. Gamma Theta, University of Colorado
12. Delta Sigma, University of Connecticut
13. Eta Omicron, Brigham Young University

3,000 TO 8,000 STUDENTS

1. Epsilon Lambda, Michigan College of Mining and Technology
2. Zeta Omega, Baylor University
3. Eta, Northern Illinois University
4. Lambda Pi, La Salle College
5. Alpha Chi, Massachusetts Institute of Technology
6. Alpha Psi, Lehigh University
7. Iota Lambda, North Carolina State College
8. Epsilon Phi, Youngstown University
9. Kappa Rho, Seattle University
10. Alpha Omicron, Southern Methodist University
11. Zeta Phi, Howard University
12. Epsilon Iota, Mississippi State University
13. Lambda Omicron, West Virginia University

1,500 TO 3,000 STUDENTS

1. Iota Tau, St. Olaf College
2. Beta Omicron, Missouri School of Mines
3. Gamma Chi, Howard College
4. Nu Gamma, Southwest Texas State College
5. Eta Lambda, Wisconsin State College, Eau Claire
6. Iota Omicron, Gettysburg College
7. Kappa Theta, Wake Forest College
8. Gamma Xi, Rockhurst College
9. Eta Iota, Millersville State College
10. Beta Upsilon, Northwest Missouri State College
11. Nu, Upsala College
12. Lambda Omega, California State College (Pa.)
13. Lambda Xi, Pan American College

LESS THAN 1,500 STUDENTS

1. Beta Xi, Westminster College
2. Theta Xi, Parks College of St. Louis University
3. Alpha Nu, St. Norbert College
4. Epsilon Epsilon, Missouri Valley College
5. Lambda Tau, Salem College
6. Lambda Upsilon, Ursinus College
7. Theta Nu, Hamline University
8. Delta Upsilon, East Stroudsburg State College
9. Nu Alpha, Quinnipiac College
10. Nu Epsilon, Georgia Southern College
11. Lambda Kappa, Loras College
12. Mu Eta, Albright College
13. Mu Mu, Oglethorpe University