

TORCH AND TREFOIL

ALPHA PHI OMEGA

NOVEMBER, 1962

NATIONAL SERVICE FRATERNITY



TORCH and TREFOIL

Vol. 37, No. 6

NOVEMBER, 1962

National Officers of Alpha Phi Omega

William S. Roth.....Raleigh, N. C.
National President

E. Ross Forman.....Philadelphia, Pa.
National First Vice President

Dr. Lester R. Steig.....Palo Alto, Calif.
National Second Vice President

Rev. Frans A. Victorson...St. Joseph, Mich.
National Third Vice President

Manfred O. Aws, Jr....Milwaukee, Wisc.
National Treasurer

Joseph Scanlon.....Kansas City, Mo.
National Executive Secretary and Editor

J. D. Armstrong.....Greeley, Colo.
Elmaar H. Bakken...New Brunswick, N. J.
Prof. Harry C. Barnett...East Lansing, Mich.
Dr. Glenn R. Barr.....Oxford, Ohio
Dr. H. Roe Bartle.....Kansas City, Mo.
R. L. Brittain.....Auburn, Alabama
George F. Cahill.....Pittsburgh, Pa.
C. J. Carlson.....Riverside, Calif.
William E. Cook.....Minneapolis, Minn.
M. R. Disborough.....Louisville, Ky.
Benjamin F. Fay.....Wilmington, Del.
Dr. Thomas T. Galt....Spartanburg, S. C.
Irwin H. Gerst.....Canoga Park, Calif.
Zenon C. R. Hansen...Lansing, Michigan
Robert J. Hilliard.....Pullman, Wash.
Dr. Lawrence L. Hirsch...Chicago, Ill.
Frank R. Horton.....Bangor, Pa.
Dean Lewis N. Jones...Lubbock, Texas
Stanley Levingston...Ruleville, Miss.
Dr. Henry S. Miller.....
.....Huntington Station, N. Y.
Sidney B. North.....Evanston, Ill.
Dean Arno Nowotny...Austin, Texas
Dean Glen T. Nygreen...Kent, Ohio
Rev. Robert J. Payne...Mt. Vernon, N. Y.
Gerald M. Plessner...St. Louis, Mo.
Dr. Harold F. Pote.....La Jolla, Calif.
Prof. Kent D. Shaffer...Pittsburgh, Pa.
Robert L. Slater, Jr....Chicago, Ill.
A. G. Spizzirri.....Louisville, Ky.
Ronald R. Turgeon...Bridgeport, Conn.
Dr. Delmer H. Wilson.....
.....New Brunswick, N. J.
Dr. Ray O. Wyland.....Tujunga, Calif.

TORCH AND TREFOIL is issued regularly seven times a year, monthly, October through May except January, from Office of Publication, 1100 Waltower Building, 823 Walnut Street, Kansas City 6, Missouri. Printed by Smith-Grievess Company, Printers and Lithographers, Kansas City, Missouri. Second Class Postage paid at Kansas City, Missouri. Subscription price \$1.00 per year.

EDITORIAL STAFF

Joseph Scanlon, Editor and National Executive Secretary. Gerald M. Plessner, Associate Editor.

On Our Cover—

National Convention arrangements and plans were discussed October 13 at the University of Kansas City. The cover shows the chapter presidents or their representatives in attendance. Seated, left to right, are Ed Hokanson, Lambda, University of Kansas; Dr. Larry Odekirk, Theta Eta, Kansas City College of Osteopathy and Surgery; Gordon Suor, Sectional Chairman; Bill Griffith, Gamma Xi, Rockhurst; Jay Jones, Pi, Kansas State University. Standing are, left to right, Dave Woodman, Epsilon Epsilon, Missouri Valley College; Larry Allen, Alpha Mu, William Jewell College; Harry Groh, Delta Mu, Kansas State College, Pittsburg; Joe Manley, Alpha Eta, University of Kansas City; John C. Smith, Beta Kappa, Central Missouri State; John McClaran, Beta Upsilon, Northwest Missouri State.

TABLE OF CONTENTS

1. Our Cover—National Convention Hosts
2. Honorable W. Willard Wirtz, Secretary of Labor
3. The 1962 Convention—Chairman Gerald M. Plessner
- 4-5. The Convention Program—National Officers
6. National Recognitions in Alpha Phi Omega
7. The Peace Corps—A Distinguished Alumnus
8. Alpha Phi Omega Finance Statement
9. National Monument Preservation
10. A Phi O in Action Photographs
11. New Pledges—Community Service
12. Chapter News—Registration Blank

ALPHA PHI OMEGA ENTERS THE PRESIDENT'S CABINET

Hon. W. Willard Wirtz, the new Secretary of Labor of the United States, became a brother in Alpha Phi Omega, on December 5, 1929, in Eta Chapter, at Northern Illinois State Teachers College, now Northern Illinois University, De Kalb, Illinois.

All of the 75,000 initiates of Alpha Phi Omega congratulate Brother Wirtz and wish him every success in the arduous responsibilities of his office.

When Brother Wirtz became member number 26 in Eta Chapter, chartered in 1928, one of his brother initiates was Ernest E. Hanson, now Dr. Hanson, Vice President for Student Personnel, at Northern Illinois. Their friendship has continued through the years.

Mr. Wirtz's original application shows he was on the football squad, and was interested in debating, oratory, and dramatics and proudly held the rank of Life Scout.

The pronounced emphasis on Service as an essential ingredient of our international relations, evidenced in the Peace Corps, People to People and many other movements on college and university campuses, points up Alpha Phi Omega's ever-increasing value.

No man is truly prepared for the Space Age, and the challenge of the decade ahead, who seeks knowledge or wealth or power for himself alone. Training in Leadership for Service is essential. Herein lies Alpha Phi Omega's greatest opportunity.

INTERESTING AND UNUSUAL CONVENTION SESSIONS, DECEMBER 27-29

Select and Register Your Delegates Now!
The Rush Is On—Only 50 Days to Convention Time

By GERALD M. PLESSNER, Program Chairman
Member National Executive Board

The 1962 National Convention, Alpha Phi Omega's 17th, promises to be the best ever. More than 100 delegates and brothers had registered within the first ten days after the convention bulletin reached chapters early in October. Our hats are off to these chapters, which responded so quickly: Alpha, Lafayette College; Kappa, Carnegie Institute of Technology; Nu, Upsala College; Xi, Iowa State University; Chi, University of California, Los Angeles; Alpha Delta, San Diego State University; Gamma Xi, Rockhurst College; Epsilon Iota, Mississippi State University; Eta Rho, Marquette University; Mu Pi, Colorado School of Mines.

Host Chapters Working Hard

The eleven host chapters in the Kansas City area met on October 13 to check over preliminary arrangements. Talks were made by Gordon Suor, Sectional Chairman for Western Missouri, an alumnus of Alpha Eta, the University of Kansas City, and by Don Baldwin, Scout Executive of the Kaw Area Council, Kansas City, Kansas, and a Presidential Representative. Mr. Baldwin was a charter member of Pi Chapter, Kansas State University. Chapters represented at the session included Lambda, University of Kansas; Pi, Kansas State University; Delta Mu, Kansas State Teachers College, Pittsburg; Alpha Eta, University of Kansas City; Alpha Mu, William Jewell College; Beta Kappa, Central Missouri State College; Beta Upsilon, Northwest Missouri State College; Gamma Xi, Rockhurst; Epsilon Epsilon, Missouri Valley College; and Theta Eta, Kansas City College of Osteopathy and Surgery.

Voting Delegates to Meet

This convention will stress voting delegate participation and action. These delegates will hold committee sessions at the Student Center of the University of Kansas City and will have the use of the University's Playhouse Theatre Building for their general sessions.

Non-voting chapter representatives and visitors will hold challenging workshop sessions at Rockhurst Col-

lege, two blocks distant from the University of Kansas City.

"Know How" Booklets

For the first time, every chapter participating is asked to bring 500 copies of a mimeographed 8x11 sheet listing its favorite project, how it was accomplished, what it cost, the value or purpose of it, and any other pertinent information about it. Copies of each project submitted by chapters will be put together as a take-home dividend from the convention.



Gerald M. Plessner

Fun and fellowship will be featured, too. An informal get-together and welcoming of all delegates will be held Thursday night, December 27,

following the opening banquet and the keynote address of Hon. H. Roe Bartle.

Chapter Presidents Featured

This convention will feature another first—a breakfast for chapter presidents only. Hosts at each table for six will be key industrial and professional leaders of Kansas City, all alumni of Alpha Phi Omega.

There will be thrills galore when the National Committee for Distinguished Awards announces its selections. There will be recognitions too for chapters with outstanding achievements.

Help make this the best National Convention ever by insuring your chapter's representation and participation. Our goal is every chapter in attendance and every man in attendance actively participating in the convention's work and findings.

WANTED — ATTRACTIVE CHAPTER displays for the First National Service Exchange exhibition at the National Convention, December 27-29, 1962. Let's show what your chapter does, how it does it, and the service resulting.

KEY CONVENTION PROGRAM LEADERS

Advisors to National Committees

The National Officers and
National Executive Board Members

Program Chairman's Committee

Robert S. Anderson
Philip Ellwanger
Ed Andrews
E. P. Jones, Jr.
Josef P. Kessler
Joseph Nelson
Luster Main

Song Leader

Jack Hedinger

Convention Daily Newspaper

Larry Lee, Editor

Pageants Committee

Richard Schworm, Chairman

Leadership Workshop Instructors

Douglas M. Harris
John C. Carlisle
Keith Lawton
Franklin E. Powell, Jr.
Richard Harrington
Richard Herron
Warren Stookey
Charles C. Cronk
Col. George W. Porter
Melvin Black
Frank G. Cuny
Paul M. H. Lienhardt
Josef P. Kessler
Fletcher Tyler
John T. Reid
James L. Boyd
Dr. Lester G. Brailey
Gordon Imlay

17th National Convention

THURSDAY, DECEMBER 27, 1962



William S. Roth, National President

- 9:00 A.M.—Registration begins
Training Program Leaders report to Program Office
- 12:00 Noon—Lunch—on your own
National Executive Board luncheon meeting
- 6:00 P.M.—OPENING BANQUET—THEME: SERVICE
Call to Order—National President William S. Roth
Advancing of Colors and Pledge of Allegiance
Invocation
Entertainment
Official Convention Photographs
Introduction of Distinguished Personalities—National President
Credentials Report—National Convention Coordinator, A. G. Spizzirri
Presentation of Convention Program and Rules—National Convention Program Chairman, Gerald Plessner
Opening Ceremony—Presentation of Theme
Introduction of Speaker by the National President
Keynote Speech and Welcome—Mayor of Kansas City and Past National President H. Roe Bartle
- 10:00 P.M.—Informal Fellowship Meeting Sponsored by Host Chapters
Meetings of Legislative Committees

FRIDAY, DECEMBER 28, 1962



Frank Reed Horton, Founder

- 8:00 A.M.—PRESIDENTS' BREAKFAST (CHAPTER PRESIDENTS ONLY)
Table Hosts—University of Kansas City Alumni
Call to Order and Invocation—National Third Vice President Frans A. Victorson
"Alpha Phi Omega, a National Service Fraternity"—National Executive Secretary
"The Future of Alpha Phi Omega Is Now!"—National President
Theme Pageant
- 9:00 A.M.—LEADERSHIP WORKSHOPS — SERIES "A" — ROCK-HURST CAMPUS
- 9:30 A.M.—Meeting of Legislative Committees Continue
Meetings of National Committees
- 12:00 Noon—LUNCHEON—THEME: FRIENDSHIP
Call to Order—National First Vice President E. Ross Forman
Invocation
Luncheon
Presentations
Theme Pageant
- 2:00 P.M.—Meetings of Legislative and National Committees Continue
LEADERSHIP WORKSHOPS — SERIES "B" — ROCK-HURST CAMPUS
- 5:00 P.M.—Free Time
- 6:00 P.M.—BUFFET SUPPER AND ENTERTAINMENT
- 7:30 P.M.—GENERAL SESSION
Call to Order—National Second Vice President Dr. Lester R. Steig
Report of National Alumni—Association President William E. Cook



Manfred O. Aws, Jr., Treasurer

Alpha Phi Omega

Report of National Third Vice President Reverend Victorson
Report of National Second Vice President Dr. Steig
Report of National First Vice President E. Ross Forman
Report of National Treasurer Manfred O. Aws, Jr.
Report of National Executive Secretary and Editor Joseph Scanlon
Introduction of National President William Roth
Report of National President
National Awards for Chapters—Past National President M. R. Disborough
Invitations for 1964 National Convention
Meetings of Legislative Committees Continue

10:00 P.M.—INFORMAL FELLOWSHIP

SATURDAY, DECEMBER 29, 1962

9:00 A.M.—BUSINESS SESSION

Call to Order—National President
Memorial Service—National Third Vice President
Report of Time and Place Committee
Action on Time and Place
Report of Nominating Committee
Election of National Officers and Executive Board Members
Report of Constitution and By-Laws Committee
Action on Proposed Amendments
FIRST NATIONAL SERVICE EXCHANGE

12:00 Noon—LUNCH

Turn-in of Reports of National Committees

1:00 P.M.—THIRD BUSINESS SESSION

Call to Order—National President
Continued Action of Proposed Amendments
Report of Resolutions and Appreciations Committee
Action on Resolutions and Appreciations
FIRST NATIONAL SERVICE EXCHANGE
CONTINUES

5:00 P.M.—Third Business Session Ends

Turn-in of Reports of Leadership Workshops

6:00 P.M.—CONVENTION BANQUET

Theme: Leadership
Call to Order—Past National President Arno Nowotny
Invocation
Dinner
Introduction of Distinguished Personalities
National Awards Ceremony
Installation of New National Officers and Executive Board Members
Acceptance Remarks by New National President
Introduction of Speaker
Convention Address
Closing Pageant

9:00 P.M.—ADJOURNMENT OF CONVENTION

9:15 P.M.—MEETING OF NATIONAL EXECUTIVE BOARD



E. Ross Forman, First Vice President



Dr. Lester R. Steig, Second Vice President



Frans A. Victorson, Third Vice President

NATIONAL RECOGNITIONS IN ALPHA PHI OMEGA



Alpha Chi, M.I.T.'s outstanding chapter, recently received the Karl Taylor Compton Award, the highest honor any campus organization can attain. This is the second time in three years Alpha Chi has earned it. Shown above are part of the chapter members, with the award certificate. They are, left to right, kneeling, Martin Falxa, Pete Van Aken, Woody Bowman, Jack Solomon. First row: Dean Fassett, advisor; Jack Prosek, Barry Bronfin, Mike Kohn, Dave Saul, Mel Goldblat, Ed Shibata, Jerry Winston, Buzz St. Aubin, Mike Morrissey. Second row: Bernie Slosberg, Bruce Lindorf, Al Schwartz, Charles Arcand, John Woods, Carl Mampaey, Fred Lamutt.



Dr. Thomas T. Galt of Spartanburg (left), Sectional Chairman of Alpha Phi Omega, presents 20-year service certificate to Clemson College Gamma Lambda Chapter's President, Devar Burbage of Greenville. Since 1942 the Clemson student organization has been dedicated to developing friendship and promoting service activities on the campus, in the community, for the nation and the fraternity.



Alpha Phi Omega participated in the first National Charter Day observance of the Boy Scouts of America, June 14, 1962, in Washington, D. C. National President William S. Roth sat at the head table with other presidents.

Shown above are, left to right, Milo F. Christiansen, Washington, D. C.; Presidential Representative C. W. Page and Mrs. Page; Joseph Scanlon, National Executive Secretary; Mrs. Buford Blair and Professor M. Buford Blair, Chairman of the Advisory Committee of Zeta Beta Chapter, Virginia Polytechnic Institute.

BETA OMICRON, MISSOURI SCHOOL OF MINES, AIDS PEACE CORPS

By WILLIAM W. NORFLEET, Publicity Chairman, Beta Omicron



The above photo shows Chapter President David L. Hemmel, left, and Projects Chairman Douglas Schellman, conferring with Dean Paul E. Ponder, Peace Corps Coordinator.

Beta Omicron Chapter, Missouri School of Mines and Metallurgy, has accepted with enthusiasm the national "Aid to the Peace Corps" project.

Chapter President David L. Hemmel and Project Chairman Douglas Schellman conferred with Dean Paul E. Ponder, the campus Peace Corps Coordinator, and worked out a challenging program for the distribution of Peace Corps materials and other services.

This is very appropriate as members of Alpha Phi Omega, dedicated to service to others, blend in naturally with the intentions of the Peace Corps.

Through the Peace Corps program of the U. S. Government, people volunteer for two years in a foreign country, aiding people there by teaching them new methods of farming, construction, disease prevention, school development and in many other aspects of life.

This program is a much better "friend-maker" for the U. S. than any foreign aid program could ever be, since it brings men of other lands, who are in need, into direct contact with Americans who are willing to live with them and help them.

ARE COLLEGE STUDENTS SELF-CENTERED? ARE ALPHA PHI OMEGA MEN?

A Study by John C. Carlisle, Presidential Representative, Zeta Nu,
Southern Illinois University

Values are attitudes and approaches to situations which affect an individual's perspective. Internalized values are expressed as an individual's total philosophy of life. Thus, a student's value system would seem to be expressed in his attitude toward life.

In 1957, Phillip E. Jacob published a compilation of studies entitled, *Changing Values in College*. According to his profile of the "average" or "typical" American college student, "The great majority of students appear unabashedly self-centered."

Does this profile apply to the members of Alpha Phi Omega, or do A-Phi-O members constitute a group whose value systems are not self-centered?

In an effort to answer these questions, two psychological instruments were administered to the Zeta Nu actives and pledges and to a randomly selected group of male Southern Illinois University students. The instruments purport to measure the "social service" or altruistic value, which is the attitude most closely associated with the cardinal principles of A-Phi-O.

The training program given to the pledge is probably the only point in the Fraternity's program where there is actual inculcation of values consistent with an altruistic attitude. The actions of the members, however, would seem to indicate that the attitude toward altruism is carried far beyond any formal training period. In fact, participation in the training and program of the Fraternity is oriented toward expression of the social service attitude.

Various mathematical formulae were applied to the scores obtained by the two groups. Zeta Nu members achieved higher scores which were statistically significant. The results lend credibility to our belief that A-Phi-O attracts men who are altruistically oriented rather than "unabashedly self-centered."

Before really conclusive statements may be made in this general area, however, additional research on a larger number of men would seem to be necessary. It is my opinion that such research will verify this study, for A-Phi-O is Service.

KANSAS CITY ALUMNUS



James L. Rieger

A third generation banker and a native son of Kansas City, James L. Rieger at the time of his birth, June 7, 1929, was destined to become a business and civic leader in Kansas City. Following closely in the footsteps of his highly respected father, Nathan Rieger, Jim became interested in scouting at a very early age. This was evidenced by the fact that upon his enrollment at Missouri University he became active immediately in Beta Eta Chapter of Alpha Phi Omega and was President of the Pledge Class of 1949. The Honorable H. Roe Bartle presented Alpha Phi Omega pins to Jim Rieger and his father, Nathan, simultaneously at ceremonies conducted on the campus of Missouri University.

His civic and community activities have been wide and varied. He is on the Executive Committee of the Community Chest and member of United Fund Board. He is a member of the Board of Trustees of Kansas City Philharmonic and is on the Board of the Kansas City Area Council, Boy Scouts of America. He is an Honorary Director of Rockhurst College and a member of the University of Kansas City Associates. He is Treasurer of the Mayor's Christmas Tree Fund and member of the Mayor's Industrial Commission of Kansas City, Missouri. He is a Board member of the National Conference of Christians and Jews. He was one of the founders of the National Multiple Sclerosis Association, Kansas City Chapter.

He and his wife, Elinor, reside at 1230 Arno Road. They have a fine son, Thomas Andrew Rieger, who will surely follow closely in the footsteps of this illustrious family.

ALPHA PHI OMEGA FRATERNITY FINANCE STATEMENT

Statement of General Fund Cash Receipts and Disbursements for the Fiscal Period December 1, 1961-August 31, 1962

Total
December-August
(Nine Months)

CASH FUNDS, DECEMBER 1, 1961:

In Banks	\$ 3,393.70
In Savings & Loan Associations	7,000.00
Petty Cash	50.00
Total Funds, December 1, 1961.....	\$10,443.70

RECEIPTS—BUDGETED

Charter Fees	\$ 277.00
Pledge Fees	15,016.00
Initiation Fees	35,064.00
Royalties	2,245.97
Interest:	
General Fund	286.25
Endowment Fund	550.00
Endowment Fund Earnings	333.63
Annual Chapter Contributions	2,209.00
Total Budgeted	\$55,981.85

RECEIPTS—NON-BUDGETED

Sales of Jewelry and Supplies	\$ 5,935.28
Overpayments	385.43
1962 Convention Fees	55.00
Special Contributions	574.70
Gross Receipts	\$62,932.26
Total	\$73,375.96

DISBURSEMENTS—BUDGETED

Salaries	\$15,825.43
Torch and Trefoil	3,579.90
Printing	3,811.81
Office Supplies	638.67
Postage-Express	2,433.79
Chapter Service and Expansion	4,852.66
Conferences and Seminars	4,236.29
Certificates, Charters, Awards	3,360.91
Rent	2,475.00
Retirement Expense	1,305.70
Telephone and Telegraph	1,628.02
Annual Audit	200.00
Equipment and Maintenance	1,361.69
Insurance	129.42
F.I.C.A. Tax Expense	425.16
Hospitalization Insurance	355.50
Transfer to Endowment Fund	1,200.00
Contingent Fund	—
Total Budgeted	\$47,819.95

DISBURSEMENTS—NON-BUDGETED

Purchases of Jewelry and Supplies	\$ 6,821.21
Returned Checks	106.20
Refunds	123.68

Gross Total

CASH FUNDS, AUGUST 31, 1962

In Banks	\$11,454.92
In Savings & Loan Associations	7,000.00
In Petty Cash	50.00

Total

Gross Total

Operating Budget for the Fiscal Year September 1, 1962-August 31, 1963, Established by the National Executive Board

1962-63
September 1-August 31
Budget

RECEIPTS—BUDGETED

Charter Fees	\$ 300.00
Pledge Fees	20,000.00
Initiation Fees	40,000.00
Royalties	2,000.00
Interest:	
General Fund	200.00
Endowment Fund	550.00
Annual Chapter Contributions	2,000.00
Total Budgeted	\$65,050.00

DISBURSEMENTS—BUDGETED

Salaries	\$25,000.00
Torch and Trefoil	6,000.00
Printing	4,700.00
Office Supplies	1,500.00
Postage-Express	3,000.00
Chapter Service and Expansion	4,500.00
Conferences and Seminars	4,000.00
Certificates, Charters, Awards	3,800.00
Rent	3,300.00
Retirement Expense	1,450.00
Telephone and Telegraph	2,000.00
Annual Audit	200.00
Equipment and Maintenance	1,500.00
Insurance	150.00
F.I.C.A. Tax Expense	750.00
Hospitalization Insurance	550.00
Convention—1962	1,500.00
Contingent Fund	1,150.00
Total Budgeted	\$65,050.00

The National Executive Board at its session January 27-28, 1962, adopted a new fiscal year for Alpha Phi Omega to run from September 1 to August 31. This action was made effective for the 1961-62 year, which under the old system began December 1. Hence, you will note our general fund statement of operations dates from December 1, 1961, to August 31, 1962. During this year we have had our greatest intake in new pledges and new members and our finest result financially compared with any other year in our history. Everyone has contributed to this. I am especially grateful as National Treasurer to National President William S. Roth and National Secretary Joseph Scanlon for their management and direction of our affairs.

Manfred O. Aws, Jr.
National Treasurer

NATIONAL MONUMENT PRESERVATION PROJECT

UNIVERSITY OF NEW MEXICO SHOWS HOW IT'S DONE

By **BILL STALCUP**, Vice President, Delta Tau Chapter

Editor's Note: Delta Tau Chapter, the University of New Mexico, is proud of its unique service project, which involves work at Coronado State Monument and an opportunity for its pledges to learn at firsthand about New Mexico's Indian kivas and their history.

To impress on its new men their obligation to help preserve New Mexico's monuments and spread the knowledge of their history is a primary objective in the chapter's service and training program.

To further impress them the chapter conducts its formal initiation into active membership in a kiva and uses the occasion to teach them the needs for the care of and preservation of such national monuments.

"The cult had its ceremonial home in the large chamber of the kiva, sacred to its own members. . . . It was entered through a hatch in the roof, by a tall ladder which leaned down to the floor. . . . The whole kiva itself was a powerful symbol. . . . Boys were initiated there into knowledge and power of which they had known only animal intimations."

Paul Horgan in his Pulitzer Prize winning book, "Great River, the Rio Grande in North American History," describes above a typical kiva, similar to the one that Delta Tau at the University of New Mexico uses for initiation ceremonies.

The Indian before entering the kiva as a new member was blindfolded as are the initiates of Alpha Phi Omega. However, we blindfold our initiates at the university instead of at the pueblo. The location and the way of the path to the kiva was reserved for the members of the cult, as is the case of Delta Tau neophytes. This kiva is secret ground for Delta Tau actives.

Only we know the location of it and the location is one of the rewards of being a member.

About one-half mile from the site, the pledges begin their journey to the ceremonial room.

These initiates are led by their pledge trainer (who has just led them through their pledgship period).

The neophytes are led to a clearing where each sits down for a few moments and contemplates his reasons for joining Alpha Phi Omega. After contemplating for a few moments the ceremony begins. The procession moves through the ruins of this ancient pueblo to the kiva.

Through a hole in the roof and by way of a ladder the neophytes enter the chamber. When all are safely down inside the chamber, the ceremony continues. When the neophyte takes off his blindfold, he sees the beauty that surrounds him. On the walls are painted the ancient murals of this Indian cult. Twelve of them, one on top of another, adorn the walls and remind the neophyte that within these walls the spirit of both societies prevail. Only within these walls are spoken the words of initiation.

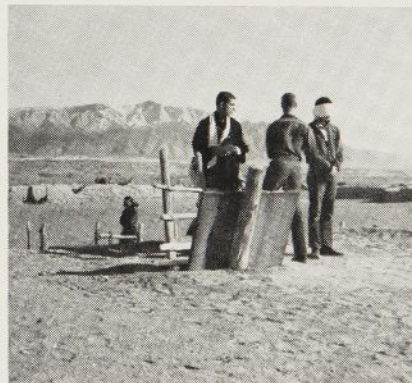
We, of Delta Tau, believe that through this unique experience we become closer to the brotherhood shared by members of our fraternity. We went through a ceremony that was meaningful and formal, and yet informal. Two cultures have come together to make our ceremony the greatest experience that we have enjoyed as fraternity men. An old society that is present in only the remains of its ceremonial den comes alive for just a few moments a year, as a new society initiates into membership men who have four principles to guide them, Service to the University, the Community, the Nation and Self.



Delta Tau Neophytes sit under a typical Indian structure at Coronado State Monument near Albuquerque, New Mexico. Each is contemplating his reasons for joining A Phi O and his future as an active member. The actives are standing around to put the neophytes back into procession and take the final steps toward the kiva, site of the ceremony.



Old actives congratulate new actives in the fellowship hour following the official A Phi O ceremony. Some of the inside of the kiva used by Delta Tau can be seen in the background. Note the symbols and figures of the murals which adorn the walls.



On top of the kiva a neophyte is being readied to enter the kiva. The ladder protruding out in the middle of the picture is the one the neophyte climbs down, blindfolded, into the kiva. The Indian cult members went down the same ladder many years ago.

MIDWEST-SOUTH-EAST — A PHI O IN ACTION



Planning for the National Convention brought together October 13 the men in the photo from ten Kansas and Missouri chapters. Joe Manley, second from left, seated, is President of the University of Kansas City host chapter. In the center, seated, is Joseph Scanlon, National Executive Secretary, and to his right is Gordon Suor, Sectional Chairman. Don Baldwin, Presidential Representative and a founder of Pi Chapter, Kansas State University, principal speaker at the gathering, was unable to stay for the photo.



Some of the brothers from four chapters posed for the above last May at a conference hosted by Nu Xi, Birmingham-Southern College. The men, not individually identified, represented Epsilon Tau, University of Alabama; Epsilon Iota, Mississippi State University; Gamma Chi, Howard College; and Nu Xi.



Nu Upsilon, Princeton University, posed for the photograph following installation last May. Dr. Delmer H. Wilson, Sectional Chairman for New Jersey, who directed the ceremony, is shown kneeling, fourth from left. To his right is Dick Davis, Chapter President. National President William S. Roth and National Vice President E. Ross Forman shared in the program.

ALPHA RHO PLEDGES 86 MEN

By **GARY CAIN**, Recording Secretary, Alpha Rho,
The University of Texas

Determined to maintain its boast as "Alpha Phi Omega's largest chapter," Alpha Rho met October 3 and voted in 86 new men as pledges and future actives. "This is one of the largest fall pledge classes ever assembled and promises to be one of the finest," says G. Burke Musgrove, Chapter President.

The chapter's executive council held its traditional fall dinner October 11 with the usual fun and fellowship following the snappy business session. Knowing that the

"Eyes of Texas" are always on us in the person of our own "Shorty" Nowotny, Dean of Student Life and Past National President of Alpha Phi Omega, we are determined to make this our best year ever in Leadership, Friendship and Service.

Alpha Rho will have a large and enthusiastic delegation at the National Convention in December. "The World's Largest Texas Flag" will be in Alpha Rho's charge at all games.

THE NEW PLEDGES ARE:

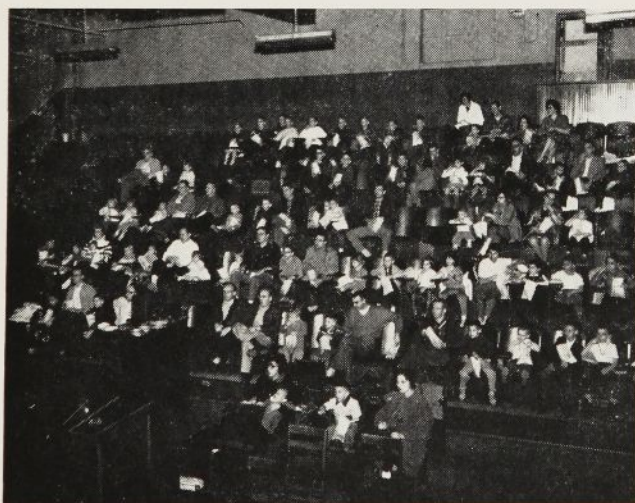
John Abney
Dennis Alvord
Cecil Bain
James Belt
Wayne Bethard
Paul Bianchi
Bob Binder
Eugene Boemer
Ronald Bond
Robert Braden
Roy Brooks
Charles Burney
Davis Carlyle
Chet Cedars
James Chaka
Paschel Church
Douglas Cone
Ronald Croom
Inmann Dabney
Dicky Davenport
Philip Desilva
Jerry Die

Dick Dillard
James Dornoff
William Gaddy
John Garcia
Armin Gerhard
James Gladson
U. S. Grant
Billy Gray
Robert Greenwood
Walter J. Guelndner
Camilo Gutierrez
Raymond Haggard
Terry Hagle
James Hardy
Lonnie Harper
Chris Hart
Dan Herron
Wayne Hill
James House
Nowfa Izzat
Larry Jackson

Michael Jones
David Jordan
Lloyd Jordan
Curtis Junge
Dale Jurgens
Jerry Kern
Robert Kara
Robert Leveridge
Robert L'Roy
Charles McMinn
Larry Manire
William Manning
Dan Marshall
Paul Matthews
Dennis Metcalf
James Mitchell
Carl Moneyhon
Dick Neal
James Parish
George Parkhurst
Sam Pressler

Kenneth Porter
Charles Prunney
Keith Reeves
Don Reynolds
Donald Schuelke
Rick Schwetmann
David Shull
David Skinner
Emerson Smith
Jean Snyder
Benny Soffar
Larry Speir
Bill Surles
Samuel Trevino
Larry Wall
Kenneth Wanamaker
Charles White
John Wolfe
Tom Wortham
John Yokie
Louis Young

A PHI O COMMUNITY SERVICE



Here's a view of Alpha Omega Chapter's second annual Film Festival for children, held on the campus of the Kirksville College of Osteopathy and Surgery. More than 100 children, accompanied by adult "guests" enjoyed the movies. The chapter will do it again next spring. Hugo Cole is Chapter President.

1962 A PHI O CONVENTION SPOT



The Bellerive Hotel, pictured above, located at 214 East Armour Boulevard, Kansas City, Missouri, is the official 1962 Convention Hotel. The University of Kansas City Student Center is the official site for registration and convention sessions. Rockhurst College will be host to the Leadership Workshop sessions. The conveniently located Bellerive is one of Kansas City's most distinguished hotels.



CHAPTER NEWS



- * * * KAPPA, Carnegie Institute of Technology, congratulated Barry Roth, the author of the article in April 1962 Torch and Trefoil on Kappa's Food Service. This busy chapter is planning to send a large delegation to the December 27-29 National Convention in Kansas City, Missouri.
- * * * DELTA DELTA, St. Louis University, has been cited by the board of directors of the Leukemia Guild for their help to guild work. Chapter members spent many Saturdays repairing Guild headquarters and doing other volunteer work.
- * * * LAMBDA TAU, Salem College, donated \$50.00 to a special fund to send the college baseball team to the regional play-off at Georgia Southern College. The money was raised through the chapter's Used Book Exchange.
- * * * BETA SIGMA, Texas Tech, felt signally honored when its Chapter President, Joe Dean Passmore, was one of the ten in ten thousand to receive from Sigma Delta Chi, professional journalistic society, an award for outstanding service and leadership. He is also the proud possessor of Alpha Phi Omega's distinguished service key, presented by the chapter to him for his exceptional leadership.
- * * * NU, Upsala College, was cited recently in an open letter for its help in the tuberculin testing program at the college by Dr. John L. Lindquist, Director of Health. The letter was printed in the Upsala Gazette.
- * * * ZETA KAPPA, Bowling Green (Ohio) State University, reports 21,381 votes were cast in its "Ugly Man on Campus" contest. The \$213.81 thus contributed was donated to the campus drive for CARE, Mental Health, World University Service, and the Student Emergency Fund of Bowling Green. The University's "Bowling Green News" congratulated Zeta Kappa for its "progressive, active attitude" in support of the Campus Charity drive.

----- Cut and Mail -----

REGISTER ME FOR THE NATIONAL CONVENTION

December 27-29, 1962—University of Kansas City, Missouri

Name _____ Chapter _____

Address _____ University _____

Mail with \$2.00 Registration fee to National Secretary, Alpha Phi Omega, 1100 Waltower Building, Kansas City 6, Missouri.