



# TORCH AND TREFOIL



"Onward and Upward"

(Story on page ten)

VOLUME 29, NUMBER 6  
OCTOBER, 1954



### National Officers of Alpha Phi Omega

Prof. Daniel Den Uyl, West Lafayette, Ind.  
*National President*  
Dr. R. H. Bolyard . . . . .Lafayette, Louisiana  
*National First Vice President*  
Dr. Henry Miller . . . . .New York, New York  
*National Second Vice President*  
M. R. Disborough . . . . .Louisville, Kentucky  
*National Third Vice President*  
Joseph Scanlon . . . . .Yakima, Washington  
*National Treasurer*  
Sidney B. North . . . . .Kansas City, Missouri  
*National Secretary*

### National Executive Board

#### The Officers and

Prof. Harry C. Barnett . . . . .East Lansing, Mich.  
Dr. Glenn R. Barr . . . . .Oxford, Ohio  
Dr. H. Roe Bartle . . . . .Kansas City, Missouri  
Joseph A. Brunton, Jr. . . . .New York, N. Y.  
George F. Cahill . . . . .Cincinnati, Ohio  
C. J. Carlson . . . . .Riverside, California  
George H. Charno . . . . .Kansas City, Missouri  
James G. Evans . . . . .Niceville, Florida  
E. Ross Forman . . . . .Philadelphia, Pa.  
Irwin H. Gerst . . . . .Hawthorne, California  
Dr. M. C. Hayes . . . . .DeKalb, Illinois  
Rev. John J. Higgins, S. J., E. St. Louis, Ill.  
Frank R. Horton . . . . .Bangor, Pennsylvania  
Arthur E. Jenner . . . . .Boston, Massachusetts  
Dean Arno Nowotny . . . . .Austin, Texas  
Harold F. Pote . . . . .New York, New York  
William S. Roth . . . . .Raleigh, N. Carolina  
Prof. Kent D. Shaffer . . . . .Pittsburgh, Pa.  
Armand G. Spizzirri . . . . .Kansas City, Missouri  
Dr. Ray O. Wyland . . . . .Tujunga, Calif.

### "BOX SCORE"

Present number of chapters, including petitions approved.....	276
Total number of members since founding .....	44,242
Number of copies of this issue.....	13,000

"There is no map of the road to success; you have to make it yourself."  
—The Right Hand

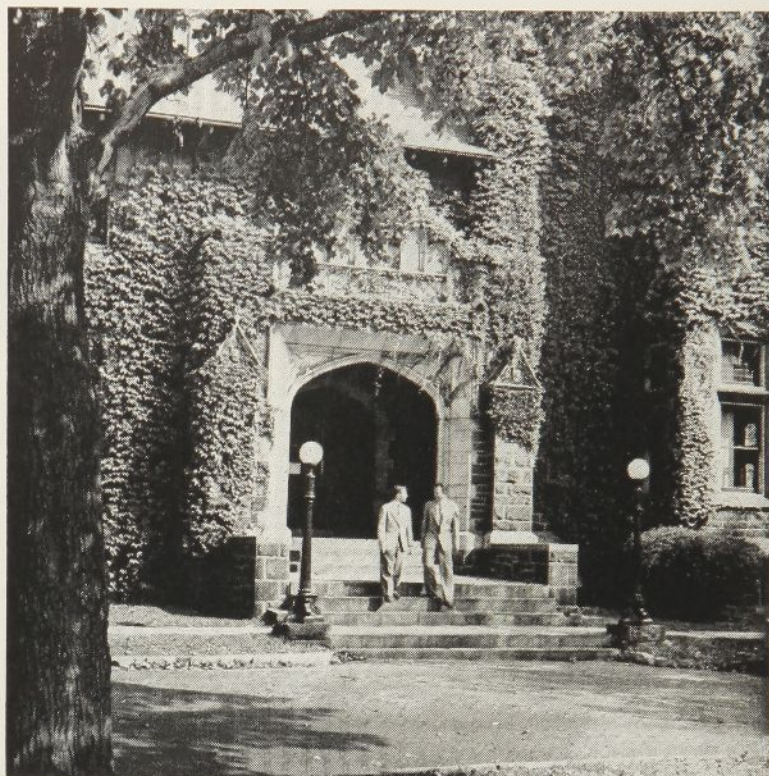
## TORCH and TREFOIL

October, 1954

Issued regularly eight times a year, monthly  
October through May.

Subscription price \$1.00 a year

Entered as second class matter February 5, 1938, at the post office at Kansas City, Mo. under act of March 3, 1879. Office of publication, 419 Columbia Bank Bldg., Kansas City, Missouri.



Hogg Hall (formerly Brainerd Hall) at Lafayette College, where the first meeting of Alpha Phi Omega was held December 16, 1925.

### PILGRIMAGE HELD AT LAFAYETTE COLLEGE

The second biennial pilgrimage to Lafayette College, the birthplace of Alpha Phi Omega, was held on the campus at Easton, Pennsylvania, on April 24 and 25, 1954. An excellent program was in charge of Douglas M. Harris, pilgrimage coordinator and past president of Alpha Chapter.

The opening session was held in Hogg Hall, the building in which the first meeting to organize Alpha Phi Omega was held in 1925. The invocation was by Dr. Robert Kelly and a welcome by Alpha Chapter was given by Robert L. Keiser, who was then Chapter President. Greetings from the national fraternity were expressed by Dr. Henry Miller, National Second Vice-President.

Dean Frank R. Hunt, Dean of Students, extended a welcome on behalf of the college faculty and administration. An inspiring message from across the Pacific was by Dr. Roy P. Villazor of Alpha Phi Omega of the Philippines.

"Alpha, The Beginning" was the

subject of a very interesting talk by Frank R. Horton, founder of the fraternity. He told of how he conceived the idea for an organization of this kind and gave some history of early developments. Another important message was by Herbert G. Horton, a charter member of Alpha Chapter. A panel discussion led by Robert L. Keiser was on the subject of "What Alpha Phi Omega Means to Me," bringing an impressive series of comments about the values and program of the fraternity.

Dinner, an initiation ceremony, and a rededication service were included in the evening program. The rededication was led by Dr. Paul Leininger, Chairman of the Advisory Committee of Alpha Chapter.

On Sunday morning, worship service was in the Colton Memorial Chapel on the campus, the guest minister being the Reverend Robert Billheimer of the World Council of Churches.

At noon the pilgrimage banquet was held in Hogg Hall, with two excellent speakers. "To Be Continued" was the subject of an address by Professor

(Continued on page eleven)



## GETTING READY FOR THE 1954 NATIONAL CONVENTION

Preparations are going along splendidly for the 1954 National Convention of Alpha Phi Omega, to be held in Milwaukee, Wisconsin, December 28 to 30, 1954. This promises to be an excellent meeting. Much interest is being shown by chapters throughout the nation, and we anticipate larger attendance than ever before.

The convention gives opportunity for acquaintanceship and discussion among delegates and members from all parts of the United States. This meeting will bring a helpful exchange of ideas concerning service projects, methods and the "know how" of chapter operation, as well as handling legislation on fraternity matters.

Reports of the national officers, prominent speakers, election of officers and board members, presentation of the ritual and other features will also be included in the program.

On this page are pictures of three officials who will be in charge of the convention. All are well experienced in AΦΩ national conventions, and this "team" along with the entire National Executive Board and the host chapters will provide a top-notch program.

All chapters in Wisconsin will collaborate as hosts. Committees will be on the job from Upsilon Chapter at Milwaukee State, Alpha Nu Chapter at St. Norbert, Beta Theta Chapter at University of Wisconsin, Epsilon Upsilon Chapter at Oshkosh State, Eta Kappa Chapter at Stout Institute, Eta Lambda Chapter at Eau Claire State, Eta Rho Chapter at Marquette, Iota Nu Chapter at Wisconsin Extension, Kappa Gamma Chapter at LaCrosse State, Lambda Zeta Chapter at Ripon and the Milwaukee Area Alumni Chapter. Those host committees will

handle the many arrangements and details necessary for an enjoyable and valuable meeting. Representatives of the Wisconsin chapters will meet in Milwaukee on November 7 to personally assist in planning for the convention.

Further details about the program, cost, reservations and other preparations will soon be sent to all chapter officers and advisors in the National Bulletin.

Each chapter of Alpha Phi Omega is entitled to send two official delegates and as many additional men as can attend. All chapter officers, advisors, active members, honorary members, life members, alumni and pledges are cordially invited.

*Plan now to be sure your chapter is represented at this important National Convention!*

**Presiding Officer**



**DANIEL DEN UYL**

Our able and devoted National President, who has led Alpha Phi Omega during the past four years, will direct the convention as presiding officer.

**Program Chairman**



**WILLIAM S. ROTH**

He has the important responsibility of planning the convention program, filled with interest and value for all in attendance.

**Arrangements Chairman**



**HARRY C. BARNETT**

As arrangements chairman he will coordinate the plans of the host committees. He is now at work to insure adequate preparations.



## A Feature Project

## SURVEY OF FIRE HAZARDS

Several times each year all of us are shocked to read of a fire disaster at some college or university. Fraternity house and dormitory fires have caused big losses to numerous students. Just this past September 24, the Phi Mu sorority house at Baker University went up in flames in the early morning hours. Twenty-nine girls fled from the blaze without injury because of the alertness of one who was studying late, but lost most of their belongings.

On several campuses, Alpha Phi Omega has conducted a survey of fire hazards as a means of locating and alleviating hazards which could cause loss of life and property. We recommend this as a project for the consideration of all chapters throughout the nation.

The more students living in a building, the greater the chance of a single catastrophe taking many lives. Dormitories and residence halls are usually most vulnerable, but fraternities, sororities, G. I. villages and rooming houses are not exempt.

A complete removal of all fire hazards is very rarely possible, particularly because of the human behavior factor. However, a great deal can be done to materially reduce the chances of a fire starting in student housing.

Most fires start from ordinary things—heating system, electrical appliances and lights, smoking, cooking, clothes cleaning and poor housekeeping. Those common causes account for 60% of all fires in all classes of property. Actually more than that high percentage cause fires in student quarters because they are generally the only fire hazards present. If the chances of fires occurring from those causes can be greatly reduced, students' lives can be made much safer.

Here is a list of fire hazards:

Improper support for electric wiring (cords strung over nails, tied back with wire, etc.).

Knotted electric cord.

Electric iron unattended and "on."

Spotting clothing with gasoline near stove.

Curtains near open flame of stove or fireplace.

No ash tray—cigarette over waste basket.

Trash accumulation in attic.

No fire extinguisher.

Flexible rubber gas connection.

Chimney too low, exposes roof.

TV aerial attached to weakened chimney.

Flue connection papered over, cracks in chimney.

Smoking in bed.

Overloaded electric outlet.

No screen in front of fireplace.

Electric extension cord under rug.

Oily rags under workbench.

Gas heater not connected to chimney.

Smoke pipe rusted through.

Gasoline kept inside of house.

Ashes against wood partition.

Open fuse blocks.

No fire alarm system in building.

Lack of outside fire escape on buildings of two stories or higher.

## Evacuation Plan

In case a fire occurs, an emergency evacuation plan is absolutely necessary

to help avoid panic. Planning is essential even if there is only one stairway in the building. If there are several stairways and a large number of students in the building, then several alternate plans should be set up based upon the use of only one stairway at a time in case the other is blocked by the fire, or the use of both stairways with the proper division of students.

Drills should be simple and planned to teach occupants to evacuate the building quickly and orderly.

## Heating Equipment

Clearance is important. Even a well maintained, tight heating unit may cause a fire if burnable materials are close to it. Burnable materials in moveable containers are hazards when adjacent to the heating unit as are wood floors, partitions, coal bins and fuel oil tanks. No wood, upholstery, paper, magazines or other burnable materials should be stored any closer than eighteen inches to any side or



A Baker University landmark for sixty years went up in flames on September 24, 1954, as the Phi Mu sorority house burned despite efforts of firemen. The girls escaped without injury, but lost most of their belongings. Student fire fighters are shown directing a hose stream against the burning building.



the top of the heating unit, including its smoke pipes and breechings. If the heating unit is hand-fired, this distance should be increased to at least thirty-six inches in front of the heating plant.

#### Electricity

Thirteen of every 100 fires are caused by faulty installation or use of electrical facilities. Most of these are common everyday abuses of electrical cords or from overloading of circuits. When too much current flows through an electric conductor, as you know, it heats up. Eventually the insulation is broken down and short circuits may result, producing enough heat to start a fire. Since this often occurs in the concealed spaces of partitions or ceilings, the fire is actually discovered only after it is well underway and has done quite a bit of damage.

Worn cords cause many electrical fires. The ordinary extension cord has electrically sound insulation, but its outer covering is not designed to take abuse or rough handling. As these cords may be in use in the same location for years, the cumulative effect of numerous abuses eventually breaks down the outer covering and insulation. At times this merely blows a fuse. However, it may produce enough heat to set burnable materials in contact with the cord on fire. The remedy is a monthly or quarterly check of all students' rooms by some experienced person in the house or dormitory. He should report any circuit that appears to be overloaded (too many fixtures or appliances connected to one outlet), unsafe locations of cords in places where they could be walked on or crushed by furniture, cords strung over nails or tied back with wire, cords in places which may become wet, plugs which show insulation breaking down at the neck.

#### Smoking and Matches

This is the largest single cause of fires. It produces twenty-two out of every 100 fires reported. While it is true that many of them are small and are quickly snuffed out, every so often one results in serious consequences. The first safeguard is the cultivation of safe smoking habits. The match or finished cigarette should be carefully extinguished and discarded where it will do no damage. The second safeguard is to make sure all living

quarters and other areas where smoking is permitted are provided with plenty of metal ash trays. Sand urns are advisable in halls, lobbies and foyers. The third safeguard is the restriction of smoking in any rooms or locations where it may be unsafe. An example: Smoking in garages is considered unsafe.

#### Cooking and Clothes Spotting

In all types of properties, these activities cause about three out of every 100 fires. The ratio is higher in student housing. The effect of heat from cooking equipment is similar to that mentioned previously for heating units. It does not show up immediately and seldom visibly, but over the years it sometimes produces fires. Often wood shelves are located over stoves or hot plates. Even though they may be two or three feet above the burners they constitute a fire hazard. There should be no combustible shelving over any stoves.

Garment spotting can be one of the most dangerous practices of students. Most cleaning fluids are similar to gasoline and give off vapors which form an explosive mixture with air. These vapors travel about the room—most of them are heavier than air—and any source of ignition will ignite them. This results in a flashback which travels to the cleaning liquid receptacle and will set on fire anything in its path. Also, it may burn the one using it. The pilot light of a stove, a lighted cigarette, a static spark from cloth will ignite this vapor train.

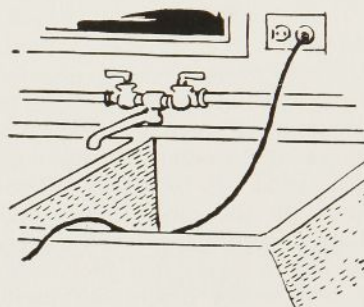
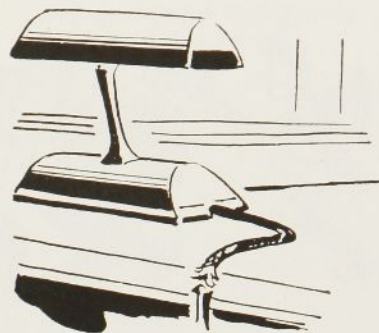
Only nonflammable spotting liquids should be permitted. All students should know of this hazard and be taught to realize their own danger if they do not comply.

#### Good Housekeeping

Six of every 100 fires result from poor housekeeping. A fire can start spontaneously in oily materials piled together or any flammable material may be set on fire by a lighted cigarette.

Good housekeeping tends to slow the spread of fire and makes it easier to control quickly. There is a saying in insurance circles well proved over many years that "A clean risk seldom burns."

An ideal storage space for materials and janitor supplies is a fire-resistive



Two examples of fire hazards are shown above. At the top, of course, the worn cord is a frequent cause of fires, and the lower picture indicates the danger which comes from placing an electrical cord where it could become wet. Numerous other hazards are described in the accompanying article.

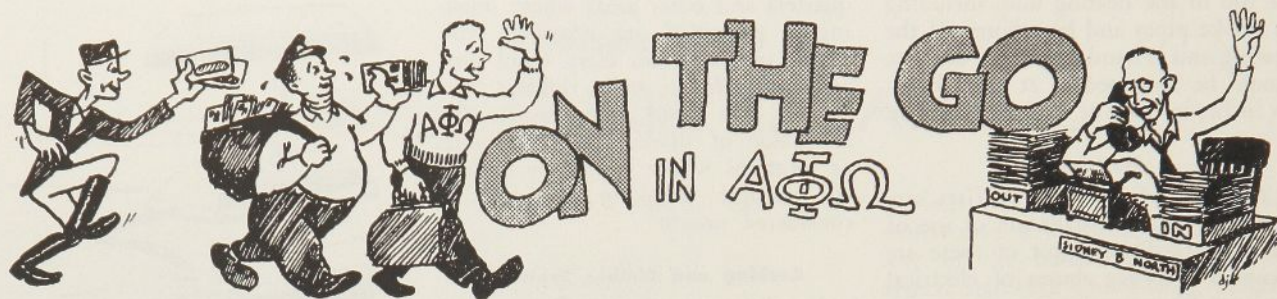
basement, particularly if it has rooms partitioned with incombustible materials such as tile or gypsum block.

#### What Alpha Phi Omega Can Do

A well-conducted survey of hazards such as those mentioned above can help lessen the danger of fire loss on every campus. Alpha Phi Omega can bring this vital subject to the attention of the Student Council, the Interfraternity Council and the Interdormitory Council. Contact your Dean of Men or Director of Student Affairs or Director of Housing to offer the manpower of your chapter in such way as they may direct in helping find and eliminate fire hazards. This can be an important service to your campus.

*Editor's Note: The statistics in this article are from the Federation of Mutual Fire Insurance Companies. If you would like to secure an illustrated booklet entitled "Is Your Student Housing Fire Safe?", write to that federation at 919 North Michigan Avenue, Chicago 11, Illinois. The booklet includes a suggested fire safety inspection sheet and quantities of the inspection sheet may be obtained from the federation without charge.*





### Orientation and Registration Service

At *The Rice Institute*, THETA LAMBDA CHAPTER has received a fine letter from Dean Guy T. McBride, Jr., thanking the chapter for its splendid work during the orientation and registration period. The Dean said, "I know I speak for the entire student body and more particularly for the freshman class in saying that your leadership and service during this period was a very real help in getting school underway in such a fine fashion."

### Testing Program

At *Florida State University*, IOTA RHO CHAPTER assisted in the entire testing program for the Freshman Orientation Week this Fall. At registration the chapter maintained a booth for contacting prospective new pledges. This is reported by Vic H. MicKunas, Treasurer.

### Book Sale at Oshkosh

EPSILON UPSILON CHAPTER at *Wisconsin State College, Oshkosh*, concluded a busy and successful year last May with its annual book sale. The books, which are donated by students and faculty, are priced to furnish a basis for a personal library at reasonable cost. Numerous other projects were carried out by the chapter last year including the first annual Ugly Man contest from which proceeds were given to the Christmas basket drive (another annual chapter project), putting on two leadership training courses for the local Scout Council, registering high school students for a visitation day and for the band clinic, assisting with a talent census at semester registrations and other valuable services. This is reported by Philip Rose, Past Historian.

### Building Markers

One of the first major projects of LAMBDA IOTA CHAPTER, which was installed at *New Mexico A. & M. College* this past May, is the preparation of signs for the college buildings. The signs will designate the buildings for the convenience of visitors. These markers have been cut out and welded and the painting and erection is to be done by this Fall's pledge class. The group has been given a chapter room in the basement of the men's dormitory and will paint and decorate the room within the next few weeks. Numerous projects are planned. This news is reported by Homer Heinzman, Corresponding Secretary.

### "Rat Day"

The largest amount of money for ZETA BETA CHAPTER's Campus Aid Drive at *Virginia Polytechnic Institute* last year came from "Rat Day." This is when the upperclassmen of the cadet corps auction off their cadet rank to the freshmen of the corps. Then the freshmen take over the running of the cadet corps for a full day. The chapter tried a variation of the Ugly Man contest, holding an Ugly Professor contest. Lt. Col. Cox of the AROTC staff won the contest. It was a lot of fun for all of the faculty and students. The total amount of the Campus Aid Drive came to \$2,075.00. This was reported by Eugene H. Copeland, Jr.

### PAINTING COLLEGE SIGN AT SOUTHEASTERN STATE



A project of Kappa Zeta Chapter last Spring was the painting of the sign shown in this picture. On the ladder is Norman Goodman and on the pillar is Jim Shaver. Several other members and one faculty advisor also assisted with the painting.



### A Philippines Chapter Is Host to Three U. S. Naval Officers

Gamma Chapter of Alpha Phi Omega of the Philippines recently had as its guests three United States Naval officers of Cruiser 414 which anchored at Dumaguette City on a routine patrol trip. The officers were Lt. S. O. L. V. Freed of San Diego, California, Ens. R. A. Peskay of Van Nuys, California, and Lt. J. G. Paul A. Laederack of Chicago, Illinois.

Robert Peskay is a member of EPSILON CHI CHAPTER at *Los Angeles City College*, and Paul Laederack is a member of DELTA EPSILON CHAPTER at *Illinois Institute of Technology*.

This is just one example of the friendly relationships afforded between Alpha Phi Omega chapters of the Philippines and the United States.

A report of service from Silliman University tells of "Operations Clean-Up" in which members of Alpha Phi Omega did work in the former Industrial Building on the campus and later the chapter assisted in laying pavement in front of Oriental Hall. The chapter is also actively campaigning for improvement of Student Center in the Townsend Memorial Hall.

### Swimming Instruction for Scouts

Emphasis in KAPPA GAMMA CHAPTER's swimming instruction program for Scouts this Fall will be on non-swimmers and beginners. Special need has been found for training of those who wish to learn to swim and those who would like to swim better. Instructors classes will be held periodically so swimming teaching methods can be standardized. Classes given by the chapter last year in the men's pool at *LaCrosse State College* extended over a period of nineteen weeks from November to April. A total of 104 boys participated. Instructors were Ronald Friberg, organizer; Gerald Edwards, head of non-swimming classes; Peter Schaettle and Norman Duffrin, co-heads of beginner classes; Chester Miller, head of swimmer classes; Donald Osborne, head of life saving classes, and Gerald Hunt, John Bibby, William Hutchins, David Osborne and Arthur Selmikeit. Scouts in the swimming classes came from *LaCrosse* and six nearby communities. This is reported in a newspaper item sent in by Dean R. J. Gunning, Chairman of the Advisory Committee.

### PREPARE PICNIC AREA AT SOUTHERN ILLINOIS



Many hours of work have been given by Zeta Nu Chapter in preparing a picnic area at Southern Illinois University. The upper picture shows members laying flooring on a bridge, and in the lower picture is the finished product.

### Work and Fun at Scout Camp

On the week end of May 15 and 16, ETA NU CHAPTER of *St. John's University*, Collegeville, Minnesota, spent an outing at Camp Clyde, a Scout Camp about seventy miles from the university. This was in cooperation with the St. Cloud Boy Scout Council, the purpose being to lend a hand in preparing the camp for the summer season. Among the jobs accomplished were the applying of a wood preservative to three of the camp's log buildings, cleaning up the dining hall, removing an unnecessary partition in the kitchen and scrubbing out the big kitchen refrigerator. Leisure time was spent eating and canoeing and everyone left Camp Clyde relaxed and ready for semester finals.

### Aid to World University Service Fund

At *North Carolina State College*, IOTA LAMBDA CHAPTER had a major part in last year's United Fund Drive from which a total of \$468.00 was secured. Of this amount, ninety per cent was sent to the World University Service and ten per cent to the Raleigh United Fund. The "Wild Life in North Carolina" magazine for July included an article on the subject of Vacation Safety, showing water photos made with the aid of Iota Lambda Chapter members. The pictures include illustrations of methods of canoeing, swimming and diving, life saving, and points out precautions which are necessary for water safety. This news is reported by H. H. Gates, Past President.

### CONTEST AIDS CHILDREN'S HOME



Bubba Irving, age five, is shown proudly displaying some new clothes given to him by Zeta Omega Chapter. He is one of the youngsters at Walker's Children's Home who benefited from the April King Contest held at Baylor University. A total of \$145.40 received in the competition at a penny a vote was donated for use in repairing the orphanage.



## HIGH SCHOOL SENIOR DAY AT EAST TENNESSEE STATE



Shown helping serve lunch, members of Lambda Alpha Chapter assisted the administration of East Tennessee State College in entertaining about 1,800 high school seniors from surrounding counties. Co-chairmen of the event were the Dean of the College and Edwin Peavyhouse, Vice President of the chapter, who took the picture. The seniors toured the campus and each APO member served as leader of a group of college guides. Members also directed the visitors to group meetings and a joint meeting in the gym. Wearing armbands in the picture are Darrell McKinney, who was then a pledge, and George Bellamy, Second Vice President.

## Scholarship at Millikin

A new scholarship for a *Millikin University* freshman with Scout experience has been established by ETA EPSILON CHAPTER of AΦΩ. Announced by Walter B. Bray, Director of Admissions and Public Relations, he said the plans call for awarding \$50.00 annually to an incoming freshman. This amount will be applied toward tuition. The credentials of all incoming freshmen men will be considered in making the selection. An Advisory Committee from Eta Epsilon Chapter, including the Scout Executive of the Lincoln Trails Council, will nominate a candidate for the award each year and the committee's selection will be subject to the approval of the Admissions Office.

Candidates must have been members of the Boy Scouts prior to their enrolling at Millikin and they must rank in the upper third of high school classes of less than 100 or upper half of classes over 100. Each candidate must also have letters of recommendation sent by his Scout leader and his pastor. This was reported by James G. Stevenson, President, and Robert Grohne, Publicity Chairman.

## LAMBDA IOTA CHAPTER AT NEW MEXICO A & M COLLEGE



This is the installation picture of Lambda Iota Chapter taken at the ceremonies last spring. The ritual was conducted by a delegation from Delta Tau Chapter at the University of New Mexico, with Sidney B. North, National Secretary, officiating for the National Executive Board. This new chapter has a fine program under way and we wish it a bright future of Leadership, Friendship and Service.

## Tours for Foreign Students

One of the projects of ETA RHO CHAPTER last year was the conducting of tours of the City of Milwaukee for foreign students attending *Marquette University*. This was much appreciated by those students. One of the other numerous projects of the chapter last year was assisting the clergy in the annual three-day university retreat attended by over 2,000 students. On May 15 the chapter celebrated its fifth year on the Marquette campus.

## Scout Day at Football Game

On October 9, ALPHA SIGMA CHAPTER was host to more than 1,500 Scouts and leaders from throughout the State of Nebraska at the *University of Nebraska-Kansas State* football game. A block of seats was obtained in a reserved section and members of the chapter were on hand to help the visitors find their section. The project was a fine success and the chapter hopes to make it an annual event. This is reported by Bruce Burnham, Publicity Chairman.



### Guards at Scout Exposition

OMEGA CHAPTER at *Drake University* provided manpower as fire guards at the Boy Scout Exposition for three nights last Spring at the Iowa State Fair Grounds. This was one of numerous services carried out by the chapter throughout the past school year. Projects of Omega Chapter which are continuous throughout the year include maintenance of the Lost and Found office in the Student Union, taking care of campus bulletin boards, ushering at all-university convocations. Some of the annual projects include providing orientation counselors for freshmen, operating a coffee and doughnut concession during Fall and Spring registration, the annual song quartet contest, assistance in the campus carnival, conducting an annual Scout Visitation Day and other events. This is reported by W. Allan Teppert, Faculty Advisor.

### Pledges Build Signs

As part of their work in accumulating service points to go active, last Spring's pledges of ZETA LAMBDA CHAPTER prepared and placed signs on the campus reading "Step on Something Else," "Keep Off the Grass," and "Help Keep Our Campus Clean." A new project of the chapter this Fall is the Book Exchange. Approval was given by the Student Activities Committee of the *University of Toledo* last May for the chapter to operate an exchange. This news is from "The Helmet and Crest," chapter newsletter.

### Bindex

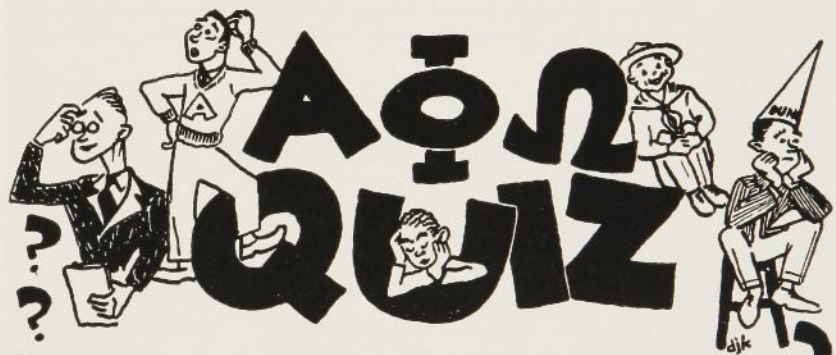
GAMMA BETA CHAPTER at *San Jose State College* publishes a bindex each year. It's a convenient set of notebook dividers for separating notes and materials used by each student in his several classes. Advertising sold to local merchants more than pays the cost. From the profit two \$100.00 scholarships are given each year.

The bindex is presented to each student without charge. In addition to the advertising, each page shows data for student use such as the football schedule, basketball schedule, college yells, a space to write in the semester class schedule, etc. It is valuable to the entire student body and is one of many fine projects conducted by the chapter each year.

### LAMBDA THETA CHAPTER AT COLUMBIA COLLEGE



Here are shown part of the charter members of Lambda Theta Chapter installed last spring at Columbia College. Dr. Henry Miller, National Second Vice President, officiated for the National Executive Board with the ritual being conducted by Gamma Delta Chapter of the Bernard M. Baruch School of Business, CCNY. It is an excellent new chapter with a fine preparatory record, and we wish it a strong future.



By Joseph Scanlon

1. When a prospective pledge asks about Alpha Phi Omega, how should you define this organization?
2. What are the requirements for membership?
3. What Scouting experience is necessary to be eligible for membership?
4. How often should chapter pledge classes be conducted?
5. What are the two purposes for open meetings in the chapter?
6. What is the reason for a period of pledge-ship in APO?
7. Does affiliation with other fraternal groups preclude membership in APO?

ANSWERS ON PAGE 11





## LAMBDA KAPPA CHAPTER AT LORAS COLLEGE



This enthusiastic group was installed as Lambda Kappa Chapter at ceremonies conducted last May. The ritual team of Beta Theta Chapter at the University of Wisconsin conducted the ceremony. Reverend John J. Higgins, S.J., officiated on behalf of the National Executive Board. Within just a short period of time this chapter has become a highly respected service organization and we wish it good luck for the future.

## ON OUR COVER

The painting on our cover signifies the spirit which exists in Alpha Phi Omega this Fall. "Onward and Upward" is an excellent theme for this year. We have excellent opportunity for increased service. Letters received in our National Office indicate pledging is going along splendidly. New men are being added to chapter rolls who will help expand our activities in the months ahead.

This beautiful painting of a typical Alpha Phi Omega brother on the job in service to his fellowmen was rendered by Professor Remington Schuyler of Missouri Valley College. He serves as an advisor in Epsilon Epsilon Chapter of  $\Lambda\Phi\Omega$  and takes an enthusiastic interest in the progress of our fraternity. The painting hangs on the wall of our National Office in a spot to be readily observed by every member and visitor who enters the office. We are much indebted to Brother Schuyler for his kindness and sincerity in producing this picture.

Painted in December 1950, the picture was unveiled at our Eleventh National Convention as part of the silver anniversary commemoration of the fraternity.

In the background of the actual painting is the Scout emblem in the cloud formation. The emblem is not visible in the printed reproduction on our cover, but it is there and ever stands as a symbol of the Scout Oath and Law and of the Good Turn which form the basis for our Alpha Phi Omega program on college and university campuses.

## IN MEMORIAM

Alpha Gamma Chapter at Purdue University mourns the loss of Brother Dwight Scarseth on June 25, 1954. A collision with another person during a baseball game resulted in a brain injury which did not respond to surgery. The accident was in Minneapolis, Minnesota, where Dwight was working for the Summer. His body was returned to Lafayette, Indiana, for burial. Two members of the chapter, Mike Eckhart and Tom Webb, were among the pallbearers, and a group of advisors and members attended the funeral in a body.

The chapter has established a memorial fund through contributions being given by members. Dwight was a past president of Alpha Gamma Chapter and his unselfish work was well known. His concern was always for the group and its betterment.

It is indeed fitting that the memorial fund will be used to contribute something of lasting value to Scouting in the Lafayette area.

Alpha Pi Chapter at the University of Miami lost a beloved advisor when Dr. Paul R. Yarck was killed in an automobile accident on August 27, 1954. Those who knew him were impressed by his kindness, generosity, sympathetic understanding and his boundless devotion of time and energy to the cause of helping others. The chapter sincerely mourns the passing of this fine advisor.

All chapters of Alpha Phi Omega in Philadelphia feel deeply the loss of Alford G. Otto who died July 24, 1954. He was a great Scouter and a great friend of Alpha Phi Omega. He was an honorary member of Zeta Theta Chapter at Drexel Institute of Technology. As Director of Athletics at Girard College, he had made available excellent quarters for meetings of the Philadelphia Area Alumni Chapter. His passing marked a great loss, both fraternal and personal, to all  $\Lambda\Phi\Omega$  men with whom he had come in contact.



## PILGRIMAGE

(Continued from page two)

Daniel Den Uyl, National President, stressing the opportunities for further growth and service in Alpha Phi Omega. Dr. Robert G. Crosen, Dean of Faculty of Lafayette College, spoke on "After 5 P. M.—What?". He stressed the splendid opportunities for unselfish service after the day's work is done.

This was a very successful commemoration of the founding of Alpha Phi Omega at Lafayette College twenty-nine years ago.

### New Contest

A variation of the Ugly Man contest was the "Man of Distinction" contest conducted by UPSILON CHAPTER at *Wisconsin State College at Milwaukee* last Spring. This was a part of one of the most successful campus carnivals on record at the college. More than 2,000 votes were cast for each candidate and extensive campaigning was carried on right up until the closing of the polls.

### Answers to APO Quiz For October

1. Alpha Phi Omega is a national service fraternity, composed of college and university men who are or have been previously affiliated with the Boy Scouts and who have pledged themselves to serving their fellowmen.
2. There are three requirements for membership in Alpha Phi Omega:
  - (a) Previous training in Scouting.
  - (b) Desire to render service to others.
  - (c) Satisfactory scholastic standing.
3. For membership in APO one must have been affiliated with the Boy Scout movement. He must have taken active part as a Cub Scout, Boy Scout, Explorer or Scouter.
4. It is recommended that each chapter should conduct two pledge classes per year.
5. The two main purposes of chapter open meetings are: First, to greet and welcome new former Scouts; and second, to explain to them the purposes and activities of Alpha Phi Omega.
6. Pledges in APO is for the purpose of introducing each new pledge to the history, traditions and principles of our brotherhood, and to prove his desire to serve in our four fields of endeavor.
7. No. Affiliation with other fraternal groups does not preclude membership in APO. Members of any and all other groups are welcome to participate in our program of service.

## INSIGNIA OF ALPHA PHI OMEGA

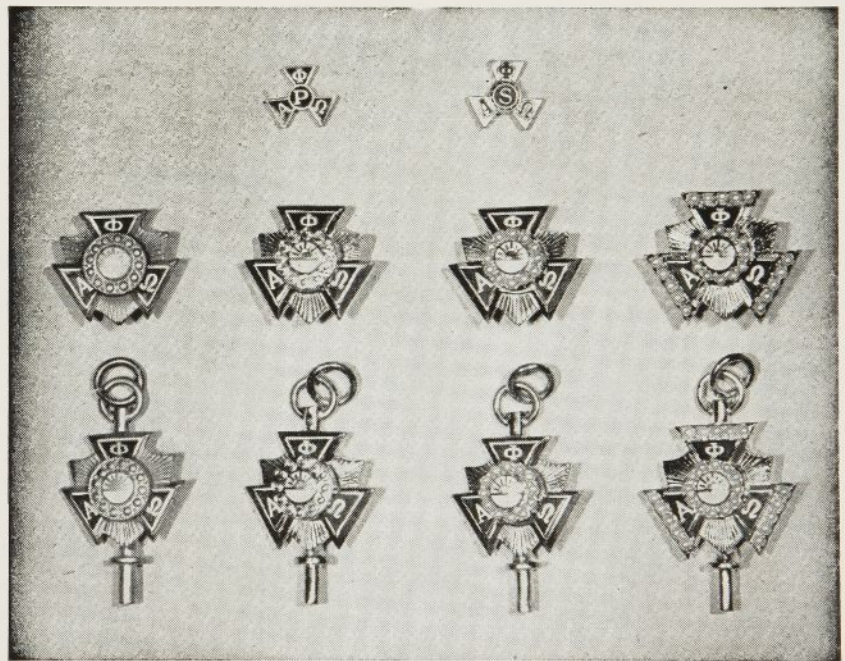
Years ago, at the very inception of Alpha Phi Omega, the founders of our fraternity had the foresight to take legal steps to protect our name and the design of our insignia. Continuously since that time the Greek-letter name and the badge of Alpha Phi Omega have been copyrighted at the United States Patent Office.

At the same time our founders visualized the necessity of setting standard specifications and regulations for the manufacture and sale of our insignia. Our first national convention, by vote of its delegates, awarded an exclusive contract to the L. G. Balfour Company of Attleboro, Massachusetts, for producing and distributing Alpha Phi Omega pins, keys, and coat of arms. This contract has been continued through the years, and every official Alpha Phi Omega badge that has ever been produced is a Balfour product.

We are proud of our badge and we want to protect it from misuse. By dealing solely with one firm, we can strictly control the distribution of our badge and coat of arms. The sale of any jewelry bearing the name or insignia of Alpha Phi Omega is unlawful except by the L. G. Balfour Company or your National Office.

The National Executive Board depends upon every loyal Alpha Phi Omega man to help stamp out any possible infringement upon our insignia rights and our fraternity name.

We should consider it a privilege to protect the honor and usage of our name and insignia.



Pledge button (shown above at top left).....	.35
Service button (top right).....	.35
Standard badge, gold plated (extreme left, middle row).....	2.50
Standard badge, 10K (second from left, middle row).....	6.50
Standard badge, crown set pearl plain arms (third from left, middle row).....	13.25
Standard badge, crown set pearl center and arms (extreme right, middle row).....	24.50
Standard key, gold plated (extreme left, bottom row).....	3.25
Standard key, 10K (second from left, bottom row).....	8.50
Standard key, crown set pearl plain arms (third from left, bottom row).....	15.00
Standard key, crown set pearl center and arms (extreme right, bottom row).....	26.00

(To all prices add 10 per cent federal tax, and any state or city tax which applies in your locality)

Official order blanks are available from your Chapter Treasurer or from the National Office.



# BULLETIN BOARD

## PICTURES

It is recommended that each chapter give particular attention to securing pictures in connection with your various projects conducted this year . . . pictures showing members and pledges at work in your service activities.

Pictures offer the best means of letting other chapters know about your projects. They tell your story much more vividly than just words. Ask your publicity committee to take pictures on all possible occasions.

Watch for pictures of chapter projects in the forthcoming issues of TORCH AND TREFOIL, and send pictures to be included in the future.

## CHAPTER RECORDS

Accurate records are highly important to the success of your chapter. These include the Secretary's records of chapter meetings and service participation, the Historian's records of projects and other activities, the Treasurer's records of chapter finances, the Alumni Secretary's records of past members, and the committee chairmen's records of the planning and conducting of each project.

Although "paper work" is not the main objective of Alpha Phi Omega, the records maintained by chapter officers are very helpful in keeping the chapter rolling smoothly.

## CONVENTION FUND

Has your chapter discussed ways and means of earning a Convention Fund to help pay the expenses of your two official delegates to the National Convention? The values which will come to your chapter from participating in this convention deserve all the effort needed to earn the required amount to send your delegates. The costs of hotel and meals will soon be announced to all chapter officers and advisors in the National Bulletin.

It is appropriate to appoint a special committee to have charge of earning a Convention Fund.

## MAILING LIST

Careful effort is being made to insure delivering each issue of the TORCH AND TREFOIL to the correct address of all members and advisors. Our National Office has asked each chapter to send a current roster of names and addresses of men who have enrolled for the Fall term, to enable the correction of the mailing stencils. Your helpfulness in this regard will be much appreciated.

Also, new lists of officers, when elected, should be promptly reported to the office to enable us to maintain correct mailing list for the National Bulletin.