

# TORCH AND TREFOIL

OF ALPHA PHI OMEGA



## *Service in Wartime*

Alpha Phi Omega's No. 1 responsibility is to help win the war and prepare for a lasting peace. As we enter the fall term we must give priority to aiding Uncle Sam in the nation's all-out war effort. Brother Del Kinney, vice-president of Upsilon Chapter at Milwaukee, has sounded the keynote for this school year in his timely drawing on this page. We must roll up our sleeves and do more for our country this year than ever before.

Last year our war projects reached great proportions. Our chapters carried out hundreds of services to help speed victory, projects ranging from the noble service of giving life's blood to help save battle-injured men to the simple job of sending the school newspaper regularly to fellow students in the military service. Many chapters are selling war bonds and stamps, others have conducted fingerprinting, others have solicited funds for the USO. Many members are serving as air raid wardens, auxiliary firemen and doing civilian defense work in various fields. Many chapters have collected tinfoil, scrap rubber, scrap metal and other vital commodities. Yes, a great number of other wartime projects have been successfully carried out as indicated by the long list of services which appears on pages three and four of this issue.

But this is not enough. We are far from serving to the full extent of our capabilities. There are service opportunities yet untouched, and we must find them. We must intensify our present projects, study ways of doing them better. We must enlarge our membership to have greater manpower available for increased service, and to do this we must strengthen our rushing and pledging program. We must wisely use the energies and talents of each brother and make sure that every member and pledge is given a specific job on one of the chapter committees.

And with all of our war service, we must not neglect our regular service projects. Such work as blood transfusions, hospital visitation, Christmas service, Red Cross drives, March of Dimes and scholarships for worthy students are just as important now as at any time in our history. These and many other regular projects should be improved and enlarged.

The motto of Alpha Pi Chapter at the University of Miami might well be adopted by every chapter. "It ain't the individual or the army as a whole, but the everlasting teamwork of every bloomin' soul." This philosophy works.

We have a big job to do. Alpha Phi Omega is trusted and respected as a service fraternity. In many quarters we are being depended upon for timely and unselfish service. Let's give our best in 1942-43!



## MAN OF THE MONTH



Harry Rinehart

Initiated February 14, 1940, he has led Alpha Phi Omega to a top position among campus organizations at the University of Miami. Serving as treasurer and then as president, he says that of all his extra-curricular activities he has enjoyed most and gained most from his Alpha Phi Omega service.

Activities include two years as business manager of campus weekly; three years on yearbook advertising staff. He is listed in current "Who's Who Among Students" as well as elected to Iron Arrow, highest honor a man may receive at Miami. Won Alpha Kappa Psi scholarship medalion for highest scholarship in junior class in school of business administration. Served on freshman advisory council, member of Lead and Ink, honorary journalism fraternity. Socially he is charter member of Miami chapter of Sigma Chi and was first Tribune.

To earn college expenses, he got up at 3:30 a. m. every morning for three years to carry Miami Herald route. Now works in accounting department in an aviation school. Has enlisted in Navy Supply Corps reserves for active duty upon graduation.

The present high standing of Alpha Pi Chapter is largely due to his initiative, leadership and devotion. Congratulations and good wishes, Brother Harry Rinehart!

An Open Letter to All Members  
From the National President

My dear Brothers:

Once again through the columns of the Torch and Trefoil it is my privilege to greet every member of our fraternity as we enter into another year of Leadership, Friendship and Service.

Never before have we faced the world in such turmoil as it is today. Our responsibilities were never so great, our challenge so vital, our responsibilities so worthy. Manpower will be the crying need. Many brothers who have carried on as our chapter leaders are now serving in the armed forces of our nation. The ranks of upperclassmen are decreased. To every man of Alpha Phi Omega on the campus at the opening of school comes a personal responsibility to do those things necessary to insure our strength and effectiveness in the months to come. Freshmen must be pledged in greater numbers than ever before and must be made to feel their responsibilities and opportunities from the very outset. Those of us who are not serving in the armed forces must give our utmost in service on the "campus front," to keep America the kind of a nation worth fighting for, to do our part in building for the America of the future.

In my humble opinion, our enlarged responsibility to carry on war service as well as our regular projects is portrayed in most graphic fashion in the three-fold cartoon at the bottom of this page. To your chapter and every other chapter a big package is delivered as your school year opens. Its contents include service possibilities so great that they exceed anything heretofore dreamed of. It will take a lot of Alpha Phi Omega enthusiasm and patriotism and spizzierinctum to "hatch" the egg, but brother, when you crack it you will see come forth the biggest and liveliest set of responsibilities you've yet known. Then if all of us can say with our brother in the cartoon, "Brother, you're talking to a man" we will put over a great service program this fall.

Lots of good wishes, and may the year 1942-43 be one of tremendous and unsurpassed success. I hope to be hearing good news from every chapter in the very near future.

Faithfully your brother,

National President.

## QUOTATION FOR SEPTEMBER

"Let us build our fraternity strongly and work for a quick and decisive victory in this titanic struggle in which this world is now enveloped, for when the time comes the three principles that form the foundation of Alpha Phi Omega will be needed far more than ever before."

By Edward F. Chambers,  
President, Gamma Beta Chapter,  
San Jose State College.

## TORCH and TREFOIL

The Magazine of  
Alpha Phi Omega

Issued regularly eight times a year in September, October, November, December, February, March, April and May.

Subscription price \$1.00 a year.

Entered as second class matter February 5, 1938 at the post office at Kansas City, Mo., under act of March 3, 1879. Office of Publication, 407 Land Bank Bldg., Kansas City, Missouri.





## BIG INCREASE IN SERVICE LAST YEAR

Over 180 different kinds of service projects were conducted by Alpha Phi Omega chapters in 1941-42. With emphasis on war aid, 26% more services were successfully carried out last year than in any previous year in our fraternity's history. As analyzed from the annual reports of chapter activities, here is a partial list of projects, indicating the wide variety of services included in Alpha Phi Omega's nationwide program (Check this list for suggestions for projects to be sponsored by your chapter this year):

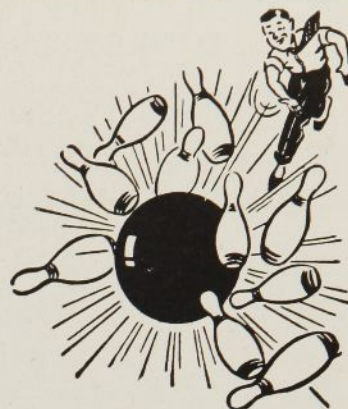
Sell war bonds and stamps	Easter Egg Hunt for children
Fingerprinting	Waste Paper Drive
Blood transfusions	Blood typing
Blood donations to Red Cross	Housing survey
Victory Book Campaign	Form Minute Man Patrol
Information service	Distribute sugar rationing cards
Guide service	Solicit war bond pledges
Red Cross Roll Call	Homecoming decorations contest
Air raid duty	Publish student directory
Ushering	Solicit for USO
Conduct student elections	Tours of Union Building
Distribute campus maps	Aid on Military Day
"Use the Walks" campaigns	Sending school paper to men in military service
Freshman orientation service	Coordinate war effort on campus
Campus cleanup	Tinfoil collection
Sponsor pep rallies	Auxiliary firemen service
March of Dimes	Sponsor Senior Scout conference
Selective service registration	Daily raising and lowering of American flag on campus
Book exchange	Promote intramural athletics
Build outdoor fireplace	Sponsor crippled children's clinic
Homecoming aid	Sponsor President's Ball
Award scholarships	Publish freshman handbook
Sponsor first aid meet	Raise funds for China Relief
Care of bulletin boards	Operate "Lost and Found" booth
Aid to Civilian Defense office	Furnish baskets of food for poor families at Christmas
Guides for USO	Sponsor ping pong tournament
Sponsor study clinic	Housing for Farmers' Week guests
Sponsor Victory Ball	Fire hazard survey
Install campus postoffice	Aid college carnival
First aid demonstrations	Donate radio to hospital
Aid on Senior Day	
Sponsor radio programs for college	
Direct traffic on special occasions	
War carnival and dance	
Demonstrations for Scout Troops	
Aid in Religious Emphasis Week	
Freshman tours	
Scout Day on campus	

(Continued on Page 4)

## Bowl A Ten Strike

### IN ALPHA PHI OMEGA

### THIS YEAR



Ten big factors make for full success in Alpha Phi Omega. Here is a guide for YOU. Study the past accomplishments of your chapter.

Make notes of strong and weak points and determine how to increase your chapter's effectiveness in the year ahead.

1. **A STRONG SERVICE PROGRAM.** An ever-increasing series of service projects for your campus, for your community and for the war effort.

2. **ENJOYMENT FOR YOUR MEMBERS.** To maintain a constant interest on the part of the members and to attract new members, your chapter activities must be made thoroughly enjoyable. You must include diversified meeting programs and a certain number of parties, outings, etc. These, along with the satisfaction that comes from carrying out service projects, will hold the interest of your present members and assist in recruiting new pledges.

3. **STRONG, CONSECRATED STUDENT LEADERSHIP.** A "going and growing" chapter must have officers who believe wholeheartedly in their jobs and who make Alpha Phi Omega their principal extra-curricular activity throughout their terms of office.

4. **COOPERATIVE ADVISORS.** An advisory committee composed of faculty men and Scouters who are ready and willing at all times to aid your chapter and who attend meetings as regularly as possible contributes much to the healthy growth of the chapter program.

5. **ACTIVE COMMITTEES.** In the most successful chapters "every member is a worker." The committees are so arranged that every active member and every advisor has a definite responsibility in chapter affairs.

6. **ADEQUATE MEETING QUARTERS.** A room on the campus which your chapter can call its own is a great aid in the smooth operation of the chapter program.

7. **PUBLICITY.** Alpha Phi Omega is not primarily a publicity-seeking organization, but a reasonable amount of desirable publicity offers two real advantages, it expresses approval of services rendered, and it lets the public know that there is such a fraternity as Alpha Phi Omega available in times of need.

8. **ACCURATE CHAPTER RECORDS.** The records of your Chapter Secretary, Treasurer, Historian and Alumni Secretary have an important bearing upon the success of your chapter.

9. **CHAPTER CONSTITUTION AND BY-LAWS.** Every well-managed organization must have regulations to govern its operation and development. A chapter constitution and by-laws, drafted, adopted and adhered to by your members, will make for efficiency and expediency in your chapter program.

10. **STRONG MEMBERSHIP.** There is strength in numbers, and the alert chapters of Alpha Phi Omega constantly induct new members in order to have sufficient man-power at all times.

## THE "BIG TEN" IN MEMBERSHIP GROWTH IN 1941-42

### Texas Tops List With 52 New Active Members

Congratulations to the ten leading chapters in membership growth for last year! With Alpha Rho Chapter Number 1 in expansion, the top ten include three state universities, three technological schools, two teachers colleges, one state college and one private university.

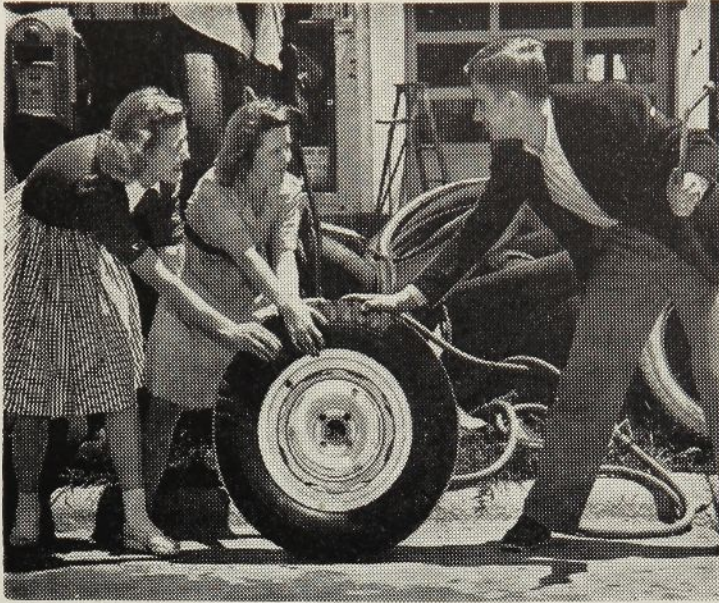
Here they are (and a big hand to every one of them):

Alpha Rho - University of Texas	52 new members
Alpha Gamma - Purdue University	37 new members
Delta - Alabama Tech	30 new members
Beta Psi - Southeast Missouri Teachers	28 new members
Eta - Northern Illinois Teachers	24 new members
Gamma Zeta - Georgia Tech	23 new members
Alpha Eta - University of Kansas City	22 new members
Beta Beta - Michigan State	21 new members
Beta Eta - University of Missouri	21 new members
Tau - University of Florida	21 new members

Several other chapters initiated 20 members each, some 19, some 18, some 17, giving a very healthy growth in the great majority of our chapters. Still greater opportunities for service call for a further increase in membership this fall. Strong rushing and pledging is essential to the continued growth of your chapter! Now is the time!



## RUBBER DRIVE ANTICS AT IOWA STATE



Displaying too much enthusiasm in the campus scrap rubber campaign are two coeds shown in picture. Anxious car owner, brandishing a fire wrench, has difficulty convincing them that wheels are not supposed to accompany the tires to the scrap heap. The rubber drive, sponsored by Xi Chapter of Alpha Phi Omega at request of student war council, was climaxed by a Rubber Ball, student dance in the Memorial Union Building, with "The Jersey Bounce" the theme song. Price of admittance one pound scrap rubber for a couple, half pound for a stag. (Photo by Bill Lapp was first published in Iowa State Daily Student and is reprinted by courtesy of editors.)

## S. M. U. PLEDGES AT WORK



Some of last year's pledges in Alpha Omicron Chapter removing paint left by football opponents on the steps of Dallas Hall. Pledge service of the elbow-grease variety.

## BIG INCREASE IN SERVICE

(List of projects continued)

from Page 3)

- |  |  |
|--|--|
| Handle publicity for student council                     | Plant trees on Arbor Day                                   |
| Paint furniture for nursery                              | Annual hobby show  |
| Solicit for community chest                              | Kite flying contest for boys                               |
| Parties for under-privileged children                    | Campus bridge tournament                                   |
| Build model airplanes for Navy                           | Care of campus shelter house                               |
| Establish student loan fund                              | Aid in faculty departmental exhibits                       |
| Scrap metal collection                                   | Sponsor campus outdoor day                                 |
| Aid at commencement exercises                            | Sponsor interfraternity sing                               |
| Sponsor student convocation                              | Sponsor marble contest for boys                            |
| Promote Red Cross first aid training                     | Tag day for Fresh Air Camp                                 |
| Aid to campus Y. M. C. A.                                | Car-parking at faculty functions                           |
| High school visitation                                   | Farewell ball for seniors                                  |
| Sponsor water carnival                                   | Hospital visitation  |
| Freshman counseling at registration                      | Serve at President's Christmas Tea                         |
| Refinish benches in Quadrangle                           | Aid on health examinations                                 |
| Aid to Rotary Conference                                 | Aid to fire rationing board                                |
| Parents Day Program                                      | Put up decorations for special college functions           |
| Traffic safety campaign on campus                        | "Keep Halls Clean" campaign                                |
| Registration of alumni and visitors on special occasions | Service on student war council                             |
| Hat-checking for college functions                       | Christmas gift mixer                                       |
| Paint door numbers for buildings department              | Conduct knothole club                                      |
| Campus tours for visiting groups                         | Maintain blood bank  |
| Annual scholarship bridge party                          | Show educational films to grade school groups              |
| Build sign for campus gate                               | Distribute programs at assemblies                          |
| Sponsor high school senior night                         | Plan landscaping of campus grounds                         |
| Build new scoreboard for stadium                         | Conservation of resources, electricity, paper towels, etc. |
| Collect magazines for hospital                           | Aid county fair officials                                  |
| Sell Easter seals  | Sponsor specialized Scout troop                            |
| Snow sculpturing contest                                 | Place air raid signs in campus buildings                   |
| Collect donations for bomber fund                        | Clean fish pool and rock garden                            |
| Sponsor travel bureau                                    | Donate splints for nursing home                            |
| Aid blind student  | Aid student church work                                    |
| Secure street flag display for community                 | Sponsor all-college jaunt day                              |
| Sponsor homecoming dance                                 | Serve as part time leaders of Scout Troops and Club Packs  |
| Volunteer stage hands for plays                          | Observe Scout Anniversary Week                             |
| Shine victory bell                                       | Distribute war bond posters on campus                      |
| Put up Christmas tree on campus                          | Erect historical marker for college                        |
| Volunteer aid to farmers                                 |  |
| Construct booths for USO fair                            |  |



**BE SURE**

your chapter is represented at the National Convention in Kansas City December 28 and 29, 1942. Plan now for your two official delegates. Watch for further news of arrangements in October Torch and Trefoil!

## FOUR NEW CHAPTERS INSTALLED LAST MAY

### Total of Ninety-eight Chartered Chapters Now in National Fraternity

New charters were issued last May to the petitioning groups at North Texas State Teachers College, University Heights College of NYU, University of Cincinnati and University of Oklahoma. These four new chapters, bringing the national roster to ninety-eight, have enthusiastically accepted the responsibilities and opportunities for service in Alpha Phi Omega.

### Gamma Rho Chapter at North Texas State

The installation of Gamma Rho Chapter was conducted May 17, by Dean Arno Nowotny of the University of Texas, member of the National Executive Board, officiating on behalf of the national fraternity. The ritual was effectively conducted by the degree team of Alpha Omicron Chapter of S. M. U.

The charter was presented by Dean Nowotny to Brother A. J. Fulkerson, Scout Executive, who received it on behalf of the Fort Worth Area Council. Brother Fulkerson in turn presented it to Dr. W. J. McConnell, president of the college, who then presented it to Professor W. A. Cooper, senior faculty advisor. Professor Cooper in turn presented the charter to the new president of the chapter, Brother Frank Spencer.

The officers elected to serve this new chapter are:

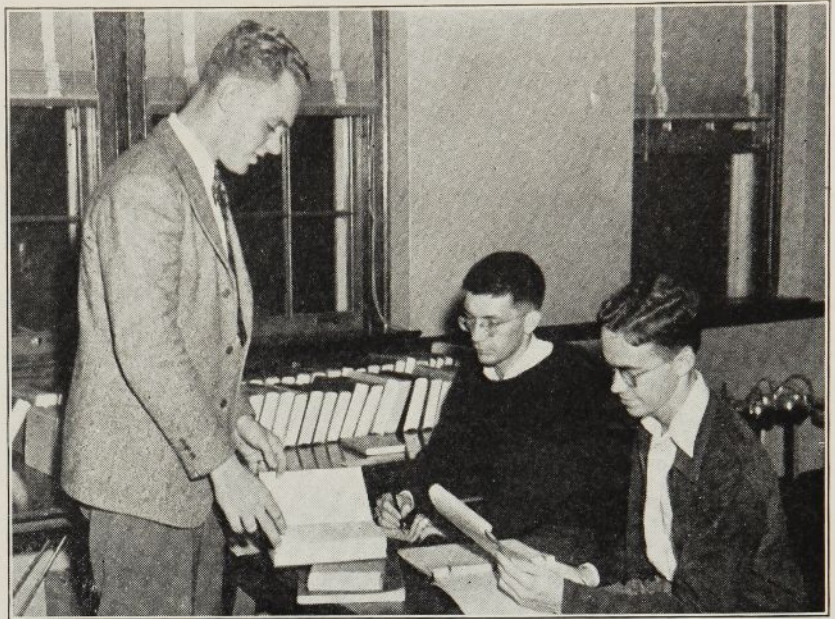
Frank Spencer.....	President
A. B. Willeford.....	Vice-President
Calvin Cumbie.....	Secretary
Harold Larimer.....	Treasurer
Jack Scudder.....	Historian
Ray Taylor.....	Alumni Secretary
J. D. Lane.....	Sgt. At Arms
Prof. W. A. Cooper.....	Senior Faculty Advisor

### Faculty and Scouting Advisors

Lyndon T. Grant	Dean T. J. Fouts
Dr. J. L. Carrico	A. J. Fulkerson
Prof. J. W. Pender	Bruce Davis
Dr. E. H. Hanson	W. H. Hawley

(Installation News Continued on Page 6)

## CONDUCTING FLORIDA'S BOOK EXCHANGE



Brothers Ed Lang and Walter Timberlake, first vice-president, are seated at the table, waiting on a student at the book exchange conducted at the beginning of each semester by Tau Chapter. By bringing together the buyers and sellers of used text books, the members of Alpha Phi Omega save Florida students several thousand dollars each year.

## DIRECTING PARENTS DAY ACTIVITIES AT ST. NORBERT



These six members of Alpha Nu Chapter formed the committee in charge of last year's Parents Day at St. Norbert College. The chapter is again in charge of the arrangements for this year. Seated left to right are Brothers Thomas Beno, new president; Clarence Rothe, past president and chairman; William Oliver; Standing, Augie Gauthier, Bernard Jankowski, and Roger Cady, new vice-president.



## SAVING ELECTRICITY AT UNIVERSITY OF MINNESOTA



To assist the power wardens appointed in each class of the university to cut down use of electricity, signs pleading, "Lights Out" have been placed at all light switches in all buildings on the Minnesota campus. Gamma Psi Chapter of Alpha Phi Omega is in charge of the far-reaching program to conserve vital materials for Uncle Sam.



## INSIGNIA OF ALPHA PHI OMEGA



Pledge button (shown above at extreme left)	\$ 25
Service button (second from left above)	25
Standard badge, gold plated (third from left above)	2.50
Standard badge, 10K	6.50
Standard badge, crown set pearl center plain arms (fourth from left above)	13.25
Standard badge, crown set pearl center and arms (fifth from left above)	24.25
Standard key, gold plated	3.25
Standard key, 10K	8.50
Standard key, crown set pearl center plain arms (extreme right above)	15.00
Standard key, crown set pearl center and arms	26.00

(To all prices add 10% federal tax, and state sales tax.)

## Gamma Omega Chapter at University Heights College of NYU.

By Julius Roth, Historian

Installation ceremonies were held for Gamma Omega Chapter on May 9, 1942. It was a real success in that it enabled our members and advisors to gain a full understanding of our privileges and duties as members of Alpha Phi Omega.

Dr. Ray O. Wyland, member of the National Executive Board, served as chief installing officer, aided by Brother Joe Green, district chairman, and four brothers from the chapters in New York City.

The officers installed at the ceremony are:

Jerome Rusoff	President
Sidney Salkin	Vice-President
Leonard Brettschneider	Secretary
Fred Tieger	Treasurer
Julius Roth	Historian
Harold Klein	Alumni Secretary
Fred Board	Sgt. At Arms
Prof Atwood Townsend	Senior Faculty Advisor
Faculty and Scouting Advisors	
Prof Robert Fowkes	Dr. Edwin R. Henry
Prof John R. Knudsen	William A. Stumpp
Prof. P. L. Throne	Joseph C. Sonneborn
Otto Kafka	

## Delta Alpha Chapter at University of Cincinnati

By A. Brandt, Jr., President

Brothers H. Roe Bartle, national president, and Kenneth Cedarland of the national executive board, did a thrilling job in installing Delta Alpha Chapter on May 26. All of our members were inspired beyond measure by the principles and opportunities of Alpha Phi Omega as presented to us at the ceremony.

In accepting the charter, our university president, Dr. Raymond Walters, and our local Scout Executive and Scouting Advisor, Brother Arthur E. Roberts, gave excellent talks for the success of the chapter. We were honored by having Dean Arthur S. Postle, our dean of men, present the membership certificates and cards to all charter members.

Our officers staff includes:

Adolf Brandt, Jr.	President
Jesse Wolfe	Vice-President
John Moegling	Secretary
Lionel Tinfow	Historian
Donald Sempstrott	Treasurer
John Rushmer	Sgt. At Arms
John Klover	Alumni Secretary
W. A. Campbell	Senior Faculty Advisor
Faculty and Scouting Advisors	
Prof. S. H. Guthrie	Arthur E. Roberts
Prof. Ward E. Bullock	Donald A. Handy
Prof. Rupert A. Anderegg	

## Delta Beta Chapter at University of Oklahoma

On May 24, the ninety-eighth



chapter of Alpha Phi Omega was installed at the University of Oklahoma. After a three-year period of service and preparation, this group received its national charter.

The installation was conducted by Brother Sidney B. North, national secretary, and a degree team of four officers of Alpha Eta Chapter of the University of Kansas City.

The new officers elected to serve Delta Beta Chapter during the first term are:

Robert Hebel	President
Sidney Patterson	Vice-President
William Lieberman	Secretary
Donald Simecheck	Treasurer
Dr. W. B. Bizzell	Senior Faculty Advisor
Faculty and Scouting Advisors	
Prof. William M. Sattler	R. L. Billington
Prof. A. S. Orenburger	Dr. H. R. Gravelle
Prof. Herbert H. Scott	C. A. Ward
T. R. MacDonald	Prof. L. H. Cherry

Alpha Phi Omega heartily welcomes these four new chapters and wishes them full success in carrying out the responsibilities of Leadership, Friendship and Service.

## A NEW ALPHA PHI OMEGA SONG

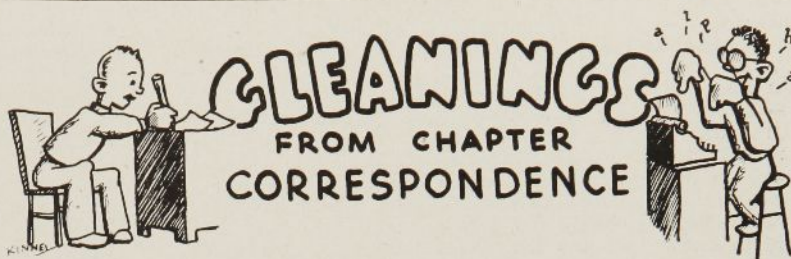
By Prof. David S. Mosesson  
Faculty Advisor, Gamma Delta Chapter  
(Tune: "Song of the U. S. Marines")

From the halls of Alma Mater  
We march in unbroken row;  
And we sing this gay cantata  
As out into life we go.  
So let every voice be eager  
And each heart with pride a-glow  
For our Alpha Phi Omega  
And the men of A. P. O.

So, dear comrades, fill your glasses  
And get ready for a toast;  
Through each mind just one thought passes—  
It's the name we honor most;  
And e'en Time, that old intriguer  
These fond mem'ries won't outgrow  
Of our Alpha Phi Omega  
And the men of A. P. O.



ALPHA PHI OMEGA...  
THE COLLEGE'S 'RIGHT ARM'



### ALABAMA TECH

"More active and extensive service than ever before is anticipated in Delta Chapter in 1942-43."

Professor A. L. Thomas,  
Senior Faculty Advisor.

### CARNEGIE TECH

"We predict good progress this coming year especially in connection with our defense committee."

Dr. Robert D. Gregg,  
Senior Faculty Advisor.

### INDIANA UNIVERSITY

"Increased membership and increased all around service is in store in Mu Chapter this year."

Robert H. Shaffer,  
Senior Faculty Advisor.

### TEXAS TECH

"I predict that Beta Sigma Chapter will become a stronger organization than ever before in this coming year."

Dean James G. Allen,  
Senior Faculty Advisor.

### SOUTHEAST MISSOURI STATE TEACHERS

"Last year has been the most successful thus far in Beta Psi Chapter history. We should have a good year in 1942-43. We will do our best."

Professor O. M. Skalbeck,  
Senior Faculty Advisor.

### SYRACUSE UNIVERSITY

"We have an excellent foundation in Phi Chapter for future progress and improvement."

Dr. Joseph L. Illick,  
Senior Faculty Advisor.

### CENTRAL Y

"Beta Gamma Chapter will continue to progress solidly."

George W. Schaeffer,  
Senior Faculty Advisor.

### MICHIGAN STATE

"Our officers in Beta Beta Chapter are ambitious to carry on the service program and outdo our previous records."

Professor Harry C. Barnett,  
Senior Faculty Advisor.

### UNIVERSITY OF MINNESOTA

"I look for a bigger and better year of service ahead."

Dean E. H. Comstock,  
Senior Faculty Advisor.

### UNIVERSITY OF TEXAS

"Alpha Rho will remain strong in the face of war uncertainties, and we will especially enlarge our war service program this year."

Dr. F. J. Adams,  
Past Senior Faculty Advisor.

### DEPAUW UNIVERSITY

"I predict that Alpha Upsilon Chapter will continue during the coming year to be the most energetic and progressive group on our campus."

Dr. W. E. Umbreit,  
Senior Faculty Advisor.

### LEHIGH UNIVERSITY

"We predict that 1942-43 will be one of our most active years in Alpha Psi Chapter."

Dr. Fay C. Bartlett,  
Senior Faculty Advisor.

### UNIVERSITY OF SOUTHERN CALIFORNIA

"We have been assisting one of our American-Japanese students, who is living in Whirlaway's stall at Santa Anita Assembly Center, with books and material for Scouting. They have organized 175 Scouts and 250 Cubs over there, and Alpha Phi Omega is cooperating."

Dr. Francis Bacon,  
Senior Faculty Advisor.

### UNIVERSITY OF FLORIDA

"The spirit among members of Tau Chapter is excellent. We predict that the service that will be rendered in 1942-43 will be even greater than in any previous year."

Dr. A. L. Shealy,  
Senior Faculty Advisor.

### SCHOOL OF BUSINESS, CCNY

"We anticipate 1942-43 will bring steady progress and plenty of solid work in Gamma Delta Chapter."

Dr. Ernest Bradford,  
Senior Faculty Advisor.

### BROOKLYN COLLEGE

"Prospects are good for growth in Gamma Iota Chapter both in membership and in service."

Dr. Frederick L. Westover,  
Past Senior Faculty Advisor.

### UNIVERSITY OF IDAHO

"I believe the activities of Gamma Nu Chapter will be increasingly successful in the coming year."

Professor Elmer M. Million,  
Senior Faculty Advisor.

### UNIVERSITY OF CHICAGO

"I believe Gamma Sigma Chapter will grow considerably during the coming year. The officers are keen, alert men who are right on the job."

Dean Zens L. Smith,  
Senior Faculty Advisor.

Promote the sale of War Bonds and  
Stamps on your campus. Back  
our brothers with bullets.



# Roster of Alpha Phi Omega Chapters

## ALABAMA

Delta - Alabama Polytechnic Institute..... Auburn  
Gamma Chi - Howard College..... Birmingham

## ARKANSAS

Beta Rho - University of Arkansas..... Fayetteville

## CALIFORNIA

Zeta - Stanford University..... Stanford  
Chi - University of California at Los Angeles..... Los Angeles  
Psi - Santa Barbara State College..... Santa Barbara  
Alpha Delta - San Diego State College..... San Diego  
Alpha Kappa - University of Southern California..... Los Angeles  
Gamma Beta - San Jose State College..... San Jose  
Gamma Gamma - University of California..... Berkeley

## COLORADO

Gamma Theta - University of Colorado..... Boulder

## FLORIDA

Tau - University of Florida..... Gainesville  
Alpha Pi - University of Miami..... Coral Gables

## GEORGIA

Beta Zeta - University of Georgia..... Athens  
Gamma Zeta - Georgia School of Technology..... Atlanta

## IDAHO

Gamma Nu - University of Idaho..... Moscow

## ILLINOIS

Eta - Northern Illinois State Teachers College..... DeKalb  
Sigma - Northwestern University..... Evanston  
Alpha Alpha - University of Illinois..... Urbana  
Beta Gamma - Central Y. M. C. A. College..... Chicago  
Gamma Sigma - University of Chicago..... Chicago

## INDIANA

Mu - Indiana University..... Bloomington  
Alpha Gamma - Purdue University..... Lafayette  
Alpha Tau - Butler University..... Indianapolis  
Alpha Upsilon - DePauw University..... Greencastle  
Beta Lambda - Indiana State Teachers College..... Terre Haute  
Gamma Mu - Evansville College..... Evansville

## IOWA

Xi - Iowa State College..... Ames  
Omicron - University of Iowa..... Iowa City  
Omega - Drake University..... Des Moines  
Beta Epsilon - Iowa State Teachers College..... Cedar Falls

## KANSAS

Lambda - University of Kansas..... Lawrence  
Pi - Kansas State College..... Manhattan  
Beta Alpha - University of Wichita..... Wichita  
Beta Tau - Washburn College..... Topeka

## KENTUCKY

Alpha Zeta - University of Kentucky..... Lexington

## LOUISIANA

Alpha Epsilon - Louisiana State University..... Baton Rouge  
Beta Phi - Southwestern Louisiana Institute..... Lafayette  
Gamma Tau - Louisiana Polytechnic Institute..... Ruston  
Gamma Upsilon - Tulane University..... New Orleans

## MASSACHUSETTS

Alpha Chi - Massachusetts Institute of Technology..... Cambridge  
Gamma Eta - Springfield College..... Springfield

## MICHIGAN

Beta Beta - Michigan State College..... East Lansing  
Gamma Pi - University of Michigan..... Ann Arbor  
Gamma Phi - Western Michigan College..... Kalamazoo

## MINNESOTA

Gamma Psi - University of Minnesota..... Minneapolis

## MISSOURI

Epsilon - Northeast Missouri State Teachers College..... Kirksville  
Iota - Park College..... Parkville

Alpha Eta - University of Kansas City..... Kansas City  
Alpha Mu - William Jewell College..... Liberty  
Alpha Phi - Washington University..... St. Louis  
Alpha Omega - Kirksville College of Osteopathy & Surgery..... Kirksville

Beta Eta - University of Missouri..... Columbia  
Beta Kappa - Central Missouri State Teachers College..... Warrensburg  
Beta Mu - Southwest Missouri State Teachers College..... Springfield  
Beta Xi - Westminster College..... Fulton  
Beta Omicron - Missouri School of Mines and Metallurgy..... Rolla  
Beta Upsilon - Northwest Missouri State Teachers College..... Maryville  
Beta Psi - Southeast Missouri State Teachers College..... Cape Girardeau  
Medical Unit of Iota - Kansas City College of Osteopathy and Surgery..... Kansas City

Gamma Xi - Rockhurst College..... Kansas City

## NEBRASKA

Alpha Theta - University of Omaha..... Omaha  
Alpha Sigma - University of Nebraska..... Lincoln

## NEW JERSEY

Nu - Upsala College..... East Orange

## NEW YORK

Gamma - Cornell University..... Ithaca  
Phi - Syracuse University..... Syracuse  
Beta Iota - New York University..... New York  
Gamma Delta - School of Business - C.C.N.Y..... New York  
Gamma Epsilon - City College - C.C.N.Y..... New York  
Gamma Iota - Brooklyn College..... Brooklyn  
Gamma Omicron - Queens College..... Flushing  
Gamma Omega - University Heights College, NYU..... New York

## NORTH CAROLINA

Rho - University of North Carolina..... Chapel Hill

## NORTH DAKOTA

Alpha Lambda - North Dakota Agricultural College..... Fargo

## OHIO

Alpha Iota - Ohio State University..... Columbus  
Delta Alpha - University of Cincinnati..... Cincinnati

## OKLAHOMA

Beta Nu - Northeastern State College (inactive)..... Tahlequah  
Beta Pi - University of Tulsa..... Tulsa  
Beta Chi - Oklahoma City University..... Oklahoma City  
Beta Omega - Oklahoma Baptist University..... Shawnee  
Delta Beta - University of Oklahoma..... Norman

## PENNSYLVANIA

Alpha - Lafayette College..... Easton  
Beta - University of Pittsburgh (inactive)..... Pittsburgh  
Kappa - Carnegie Institute of Technology..... Pittsburgh  
Alpha Beta - Pennsylvania State College..... State College  
Alpha Psi - Lehigh University..... Bethlehem

## SOUTH CAROLINA

Gamma Lambda - Clemson College..... Clemson

## TEXAS

Alpha Omicron - Southern Methodist University..... Dallas  
Alpha Rho - University of Texas..... Austin  
Beta Delta - East Texas State Teachers College..... Commerce  
Beta Sigma - Texas Technological College..... Lubbock  
Gamma Kappa - Texas Christian University..... Fort Worth  
Gamma Rho - North Texas State Teachers College..... Denton

## VIRGINIA

Theta - University of Virginia..... Charlottesville

## WASHINGTON

Alpha Xi - Washington State College..... Pullman  
Gamma Alpha - University of Washington..... Seattle

## WISCONSIN

Upsilon - Milwaukee State Teachers College..... Milwaukee  
Alpha Nu - St. Norbert College..... West DePere  
Beta Theta - University of Wisconsin..... Madison

## National Executive Board

Walter W. Head..... St. Louis, Mo.  
National Honorary President  
H. Roe Barile..... Kansas City, Mo.  
National President

Judge William J. Campbell..... Chicago, Ill.  
National First Vice-President  
Dr. M. C. Hayes..... DeKalb, Ill.  
National Second Vice-President

Sidney B. North..... Kansas City, Mo.  
National Secretary  
Dr. Edwin C. Johnson..... Alexandria, Minn.  
National Treasurer

Dean Francis M. Bacon..... Los Angeles, Cal.  
Carl S. Bauman..... St. Louis, Mo.  
Kenneth Cedarland..... Washington, D. C.  
George H. Charno..... Kansas City, Mo.  
Prof. John S. Coie..... Pullman, Wash.  
C. M. Finnell..... Chicago, Ill.

James P. Fitch..... Dallas, Texas  
Dr. H. H. Germond..... Gainesville, Fla.  
T. W. Lacy..... Kansas City, Mo.  
Dean Arno Nowotny..... Austin, Texas  
Harold F. Pote..... New York, N. Y.

Dr. Louis H. Renfrow..... St. Louis, Mo.  
Prof. Kent D. Shaffer..... Pittsburgh, Pa.  
Dean Zens L. Smith..... Chicago, Ill.  
Dr. Lester I. Tavel..... Indianapolis, Ind.  
Prof. A. L. Thomas..... Auburn, Ala.  
Dr. Ray O. Wyland..... New York, N. Y.