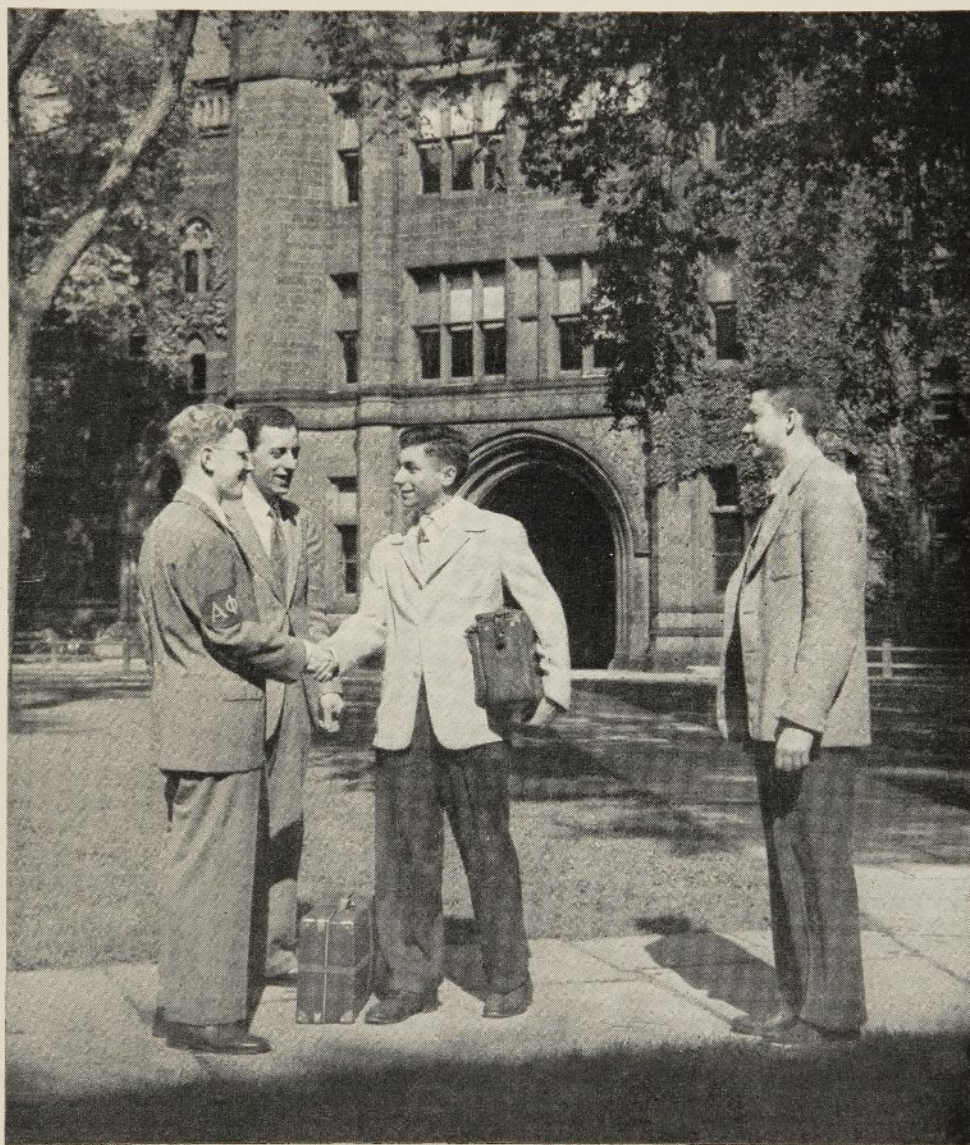




TORCH AND TREFOIL



WELCOMING A NEW STUDENT AT YALE UNIVERSITY

This is a familiar scene this month on campuses throughout the nation. The chapters of Alpha Phi Omega are serving in many ways in freshman orientation, welcoming new arrivals, providing information and guide service, conducting freshman tours, cooperating in aptitude tests and sponsoring mixers and other get-acquainted events. In the above picture (left to right) are George A. Weiss, President of Delta Nu Chapter, and Elliott H. Kone, Past President, greeting a new student, Robert B. Cumming, while Robert Byrne, an active member, looks on. The photograph is by courtesy of Brother Kone.

VOLUME 23, NUMBER 6
SEPTEMBER, 1948

National Officers of Alpha Phi Omega

Dean Arno Nowotny.....	Austin, Texas
<i>National President</i>	
Dr. M. C. Hayes.....	DeKalb, Illinois
<i>National First Vice President</i>	
Frank D. Wood.....	Atlanta, Georgia
<i>National Second Vice President</i>	
Delmer H. Wilson.....	Indianapolis, Indiana
<i>National Treasurer</i>	
Dean James G. Allen.....	Lubbock, Texas
<i>National Editor</i>	
Sidney B. North.....	Kansas City, Missouri
<i>National Secretary</i>	

National Executive Board

The Officers and

Dr. H. Roe Bartle.....	Kansas City, Missouri
C. J. Carlson.....	Los Angeles, California
George H. Charno.....	Kansas City, Missouri
Dean E. H. Comstock.....	Monticello, Minnesota
Prof. Daniel DenUyl.....	West Lafayette, Indiana
M. R. Dinsborough.....	Des Moines, Iowa
C. M. Finnell.....	Chicago, Illinois
Del Jay Kinney.....	Cleveland, Ohio
Harold F. Pote.....	New York, New York
Joseph Scanlon.....	Seattle, Washington
Dr. George W. Schaeffer.....	Chicago, Illinois
Prof. Kent D. Shaffer.....	Pittsburgh, Pennsylvania
Armand Spizziri.....	Des Moines, Iowa
Prof. A. L. Thomas.....	Auburn, Alabama
Thomas V. Waber.....	Detroit, Michigan
Dean John F. White.....	Chicago, Illinois
Dr. Ray O. Wyland.....	New York, New York
Dean A. C. Zumbrunnen.....	Marshall, Missouri

"BOX SCORE"

Present number of chapters, including petitions aproved.....	167
Total number of members since founding	20,365
Number of copies of this issue.....	12,000

IN MEMORIAM

Dr. Kenneth L. Mahony

Faculty Advisor

Alpha Eta Chapter

University of Kansas City

TORCH and TREFOIL

September, 1948

Issued regularly eight times a year in
September, October, November, December,
February, March, April and May.

Subscription price \$1.00 a year.

Entered as second class matter February 5,
1938, at the post office at Kansas City, Mo.,
under act of March 3, 1879. Office of pub-
lication, 407 Land Bank Bldg., Kansas City,
Missouri.

A MESSAGE FROM THE NATIONAL PRESIDENT

Dear Brothers:

Alpha Phi Omega, more vigorous and vital than ever, enters another great year and period of development. As a fraternity we cannot rest upon a repetition of even so worthy a past as ours, but we must push forward to new and higher achievements and find fresh and new fields for our growth in Leadership, Friendship, and Service.

As we help with orientation and registration for 1948-49, we become aware that we need greater maturity in thinking and in living. We learn to live by developing our brains, but men who receive only facts are illiterate. Far too many of us become intellectual, but miss the dynamics of our spiritual resources. As college men, you are fortunate in having the opportunity to select courses in the various arts, sciences, and specialized courses and professions, but as members of our fraternity, you have the additional privilege of participating in the curriculum of Alpha Phi Omega, with its "laboratories" provided for you to practice and develop the grass roots of democratic living and where theories can be flamed into action. Many hours have been spent in planning the courses of this curriculum, and you should plan to take them all—courses designed to develop an understanding of the history and traditions of A-Phi-O, studies in the fields of service: to your campus, your community, your brothers; seminars in the values and fundamentals of friendship and the development of leadership; courses where discussion and applied research is available for extending the fields of fraternity service and enlarging your responsibilities.

The progress and continued growth of Alpha Phi Omega depend upon your individual contribution, your conception of its scope, and your training in its curriculum. The stakes are high, but our fraternity and the values we cherish are worth the last measure of our devotion. With humility and determination we rededicate ourselves to the building of a more glorious tomorrow. Our tomorrow is today.

Fraternally yours,

Arno Nowotny

National President

Coming

THE 1948 NATIONAL CONVENTION OF ALPHA PHI OMEGA

When: December 28 and 29, 1948.

Where: Chicago, Illinois. (LaSalle Hotel.)

Purpose: Fellowship and deliberation among delegates and members from all parts of the United States. This meeting will provide a valuable exchange of ideas concerning service projects, methods, and the "know how" of chapter operation. And a real good time for all.

Who Are Invited: Official delegates (two elected by each chapter to vote on all legislative matters). Active members and pledges as unofficial delegates. Faculty Advisors. Scouting Advisors. Alumni. Volunteer and Professional Scouters. College and University Officials. Representatives of prospective new chapters. All will have full opportunity to participate.

Who Will Preside: Dean Arno Nowotny, National President, will direct the convention in his masterful way.

Costs: Will be announced to all chapter officers and advisors in the National Bulletin.

Reservations: Early in November, each chapter will be asked to report to the national office its list of official delegates and members who will attend the convention. Definite reservations will be needed to insure adequate hotel facilities.

TODAY'S SLOGAN: LET'S MEET IN CHICAGO, DECEMBER 28 AND 29.

WE'RE INCREASING OUR GAIT IN THIS FALL TERM OF '48

This issue is devoted to the predictions received in the chapters' annual reports of last year, telling about plans and activities scheduled for this year of 1948-49. From coast to coast, the chapters of Alpha Phi Omega are "on the ball" for the new term, ready to carry out three basic objectives of Increased Service, Greater Fellowship and Adequate Manpower. Notice the news items, by states in alphabetical order, beginning on this page and extending to page eleven. Watch the coming issues for further chapter news and pictures.

ALABAMA

Delta Chapter

Alabama Polytechnic Institute

Delta Chapter, in cooperation with all the honorary fraternities and sororities on the campus, have instigated a long-range program for a new Student Activities Building at A. P. I. The chapter is also trying to build up within itself in order that it may give better service to the students, faculty and Scouting. We are also working on a closer alliance between our chapter and the active Scout Troops in this area. We are hoping to make this a very busy and helpful year for Delta Chapter of Alpha Phi Omega.

—John W. Breedlove, President.

Gamma Chi Chapter

Howard College

We're growing! An excellent group of new members came into our chapter in the Spring term.

—Jerry A. Monroe, Past Secretary.

Epsilon Tau Chapter

University of Alabama

Epsilon Tau will work on homecoming this Fall. We have plans for projects on safety, student equity, and tree planting and beautification of the campus. We plan to be one of the largest organizations on the campus during this school year. As a goal for each member to work for we are giving the outstanding A-Phi-O each year a key as our appreciation for his fine work.

—William B. McCampbell, Secretary.

ARKANSAS

Beta Rho Chapter

University of Arkansas

Service projects in our chapter will be: Show out-of-town football movies to student body, March of Dimes drive, organize local merit badge instruction, build our membership up to 150, guide high school groups around campus, sponsor booth at Spring Carnival, sponsor other worthy charitable drives, usher at commencement.

—Edmund M. Hirsch, Jr., Secretary.

CALIFORNIA

Zeta Chapter

Stanford University

Our main objectives this coming year will be to so establish our chapter at Stanford that it may never again die and to take

an ever increasing share of the service activities at our school. Therefore, we plan to secure permanent meeting and office quarters, organize Cubberley lot to ensure safer and more efficient parking, act as guards and swing shift workers on registration day, usher at plays, catalogue new material in Hoover Library, conduct Sunday tours of Hoover Tower, observe the 20th anniversary of the founding of our chapter, and to look forward to the National Convention in Chicago.

—Erling Forland, President.

Chi Chapter

University of California at Los Angeles

We shall endeavor to originate and carry through projects emanating from the chapter members to a greater degree than has been done in the past. A-Phi-O will try to encompass a more diversified group of students in the UCLA student body. Such projects as a book exchange and tutoring are under consideration.

—Walter Whitaker,
Past Corresponding Secretary.

Psi Chapter

University of California, Santa Barbara

Our chapter had splendid membership growth in the spring term and particularly enjoyed furnishing the ritual team to conduct the installation at California State Polytechnic College.

—Hollis H. Parker, Treasurer.

Alpha Delta Chapter

San Diego State College

This year we plan to carry on the projects just started last year. We plan a program to keep our fraternity out in front as "the" service organization of this college. One project to receive particular attention will be the Clean Campus Campaign.

—Richard M. Smock, Past Secretary.

Alpha Kappa Chapter

University of Southern California

Most activities at beginning of the Fall semester will be to complete organization of this newly reactivated chapter, both in service and fellowship. Some of the proposed service projects are (1) a directory of students, (2) pocket-sized maps of campus to be given to each student, (3) information, advice and planning for students. It is also our ambition to get office space on the campus.

—Fred E. Owen, Secretary.

Gamma Beta Chapter

San Jose State College

We will again distribute the Bindex at the beginning of the Autumn quarter. We shall undertake the operation of the Student Book Exchange as we have in the past as a service to the students. Additional tables

are to be built for service in the area around the barbecue pit we built last year. We shall also again offer our services to the student body to help, in every way possible, the functioning of our student government.

—Newell N. Johnson, President.

Gamma Gamma Chapter

University of California, Berkeley

This year Gamma Gamma Chapter is planning to work in close cooperation with the Dean of Students office. We plan to be of any service we can to the local Scout Council by supplying leadership for any of the Scouting activities whenever needed. There will be added social functions for the chapter this year, including a Christmas dance.

—George Rodts, Secretary.

Zeta Omicron Chapter

California State Polytechnic College

The chapter has decided to print a student directory and to see that a shelter is built over the bus stop benches. This fall when the inter-club council meets the chapter will be better able to line up a service program as all service projects must be cleared through the council.

—Wesley F. Wilson, President.

Epsilon Chi Chapter

Los Angeles City and State College

We will hold dancing sessions daily to raise money for a Christmas Fund. We plan on having a much larger Transportation Office and help get more students interested in school government, to send at least three, if not more delegates, to the National Convention.

—Irwin H. Gerst, President.

COLORADO

Gamma Theta Chapter

University of Colorado

With two of our members on next year's ASUC commission, we expect to get our fingers in more pies. The Hoover and Ray Pledge Classes have some outstanding men in them who are inspiring and pushing some of our older members. We predict a fuller year of service projects and a membership of 100 men by next Spring. We are the outstanding service fraternity and intend to remain so.

—John B. Cox, Past President.

Epsilon Xi Chapter

Colorado A & M College

December 13, 1948 will be a big day for Epsilon Xi Chapter. The chapters' activities that day will be centered on emphasizing the service projects that are present on the campus today and are permanent aides to

the students of Colorado A & M. The day will be concluded in a dance and banquet to celebrate our first birthday. We will stress this year the help that is given to hospitalized students, our co-operation with the Red Cross and local law enforcement officers. The group received much pleasure in helping the underprivileged children and we hope to enlarge our help to this group.

—Kent K. Kane, President.

CONNECTICUT

Delta Nu Chapter

Yale University

Delta Nu Chapter will hold its membership campaign in September. Our fraternity is winning its severe fight to become an integral part of Yale, in spite of the University's well-organized activity and established service organizations, which have precluded much of our effectiveness until now.

Plans for this year include participation in New Haven's recreation for underprivileged youth groups, used-book collections for the Yale loan library, clothing and CARE package campaigns, university guide tours, establishment of a Lost-and-Found department, a campus-wide collection to purchase radios for the Infirmary, installation and operation of a P. A. system in the gymnasium for basketball games, and other projects suggested by students and faculty.

—Elliott H. Kone, Past President.

Delta Sigma Chapter

University of Connecticut

The A-Phi-O chapter at the University of Connecticut has hopes of making this coming year the most successful in its short history. We have plans for completely taking over freshman orientation week. We hope that by doing this we can build up more pep and enthusiasm on the campus through the freshmen. We also have several other projects in mind.

—Harold A. Rollins, Jr., Vice-President.

Epsilon Delta Chapter

Teachers College of Connecticut

The most important endeavor of Epsilon Delta Chapter last spring was our drive for clothes to help needy children of Europe. The drive progressed splendidly and we obtained the fullest cooperation from Boy Scouts, veteran and civic organizations and from radio stations and newspapers in our vicinity. The clothing is being sent to Europe through the "Save the Children Federation".

—Frank Nappe, President.

DELAWARE

Zeta Sigma Chapter

University of Delaware

Zeta Sigma Chapter plans to further the ideals of Scouting in this community by actively and energetically assisting the various Scout troops. This chapter plans to assist in all fund drives for nationally recognized charities. It also plans to aid the

student government in building the school spirit and traditions.

—William G. Bush III, President.

DISTRICT OF COLUMBIA

Zeta Mu Chapter

Catholic University

Our primary service projects are: Assistance at freshman orientation week, visiting the aged in various homes around the city, assisting in activities of Boy Scout Week and at Courts of Honor in the district, and numerous small projects in the three phases of our service objective. We anticipate two smokers and initiation ceremonies during the year and possibly a week-end at a Boy Scout camp preparing it for the season of 1949.

—Francis C. La Vigne, President.

ZETA PHI CHAPTER

Howard University

Projects of our chapter this year will include: Registration campus guide service, "Use the Walks" campaign, Magazines for Freedman's Hospital, Campus Sheik contest, conduct freshman tours, patrol leaders' training course, Christmas party, Freshman-Sophomore Forum on student life at Howard University, student opinion poll, party for crippled children, International Day frolic, and conduct a student assembly.

—Lee E. Thomas, President.

FLORIDA

Tau Chapter

University of Florida

Our aims and hopes are high for the school year 1948-49. By making full use of the Polls and Radio committees, we can both ascertain the feelings of the student body and adequately express those ideas. By making our program and meetings more interesting next year we intend to elicit a vibrant participation on the part of the active members. And by focusing more attention on the work of the Scout Troops in town we purport to increase the interest of Scouting.

—A. V. Smith, President.

Alpha Pi Chapter

University of Miami

We will help the university with the homecoming activities, operate the used book store and first-aid station, and sponsor the Annual Ugly Man Contest during the Spring semester.

—Charles Frank Carpenter, Secretary.

GEORGIA

Beta Zeta Chapter

University of Georgia

Alpha Phi Omega will continue to sponsor the March of Dimes, which for the past two years has yielded more money at the University of Georgia than at any other uni-

versity. Our membership drive will be intensified in the early fall. We shall also sponsor the all-campus track meet again and undertake any other service projects that seem necessary and desirable.

—Hall Peebles,
Corresponding Secretary.

Gamma Zeta Chapter

Georgia School of Technology

Gamma Zeta's outstanding projects last year were the Ugly Man contest, student book exchange, and handling campus elections.

—Robert Moscrip III, Past President.

Delta Iota Chapter

Mercer University

Our aim for 1948-49 is to emphasize the development of school spirit through the Freshman Orientation program, through sponsoring campus-wide athletic and entertainments events, and through close cooperation with the faculty and administration. We plan to extend our program to Scouting more in the coming year.

—Henry J. Durham, President.

Delta Kappa Chapter

Emory University

Delta Kappa Chapter during the year 1948-49 will continue its present projects with increasing efficiency by means of a larger participating group. New projects to be accomplished during the year are (1) the formation of a "stray Greek" society (2) the sponsoring of a campus leadership conference and (3) the sponsoring of a Scout field meet.

—W. C. Tunno, Jr., President.

Epsilon Eta Chapter

West Georgia College

Epsilon Eta hopes to exceed its 1947-48 record of 2179 man-hours of service through intensified performance of annual projects, and continued alertness to accept new responsibilities. We have already planned an extensive conservation project (reforestation); completion of our campus recreation area project, to supplement our usual activities of orientation, ushering, flag raising, campus beautification, charity drives, homecoming sponsorship and Scouter training.

—Ashley Morgan, Jr., Secretary.

IDAHO

Gamma Nu Chapter

University of Idaho

We are looking forward to the next sectional conference and the national convention.

—George Lea, Past President.

ILLINOIS

Eta Chapter

Northern Illinois State Teachers College

Our chapter is recognized by the student body as the outstanding service group on

the campus because of such projects as benefit dances to award scholarships, collecting articles to send to needy in Europe, and aid to any organization or individual who needs it.

—Eugene E. Staffeldt, Secretary.

Alpha Alpha Chapter

University of Illinois

Campus chest activity, our magazine bank, keep off the grass campaign and Union Building telegraph service are the projects which have especially given Alpha Alpha Chapter its recognition as an outstanding service fraternity on the Illinois campus. Many other activities are included in our achievements of last year. We have done a great deal on extension, installing several new chapters and now having contacts underway in other colleges. We will be in there pitching in the national convention plans.

—Thomas Pickett, President.

Delta Epsilon Chapter

Illinois Institute of Technology

Next year should see Delta Epsilon Chapter gain in prominence as an outstanding campus organization. Since we have always paid strict observance to our third cardinal principal, "Service," I believe we should concentrate a little more on "Leadership", and "Friendship". Such innovations as once-a-month dinner-business meetings, initiation banquets, committees for service and social projects (and one for the convention too), streamlined procedure for meetings and the promise of an APO room in September have already caused an awakening of "esprit de corps" in our chapter.

—Lester Templeton, Jr., President.

Delta Psi Chapter

Eastern Illinois State College

Dr. H. Roe Bartle, past national president of Alpha Phi Omega, was commencement speaker in our college last June. We had an enthusiastic APO meeting with him.

—Loren E. Unser, President.

Epsilon Pi Chapter

Shurtleff College

We of Epsilon Pi Chapter hope to help the freshmen get started, do more work on our park, have charge of all printed programs used at games, and sponsor the March of Dimes. We will also offer our service to the student body and faculty, community and nation and Scouting and do our best to fulfill their needs.

—William J. McCarthy, President.

Zeta Alpha Chapter

Bradley University

Plans are being made for an extensive series of projects to be initiated with the start of the school year. Service projects for the coming year shall include assisting at registration and homecoming, selling student directories, decorating of school Christmas tree, conducting tours and ushering, working with the Chamber of Commerce on safety campaign, and aiding the local Scout Council's Camp-O-Ree, Pow-Wow, Cub Wel-E-Ka-How, and Cub Carnival.

—James H. Dillon, President.

Zeta Nu Chapter

Southern Illinois University

We will act as aides during Freshman Week, have a Scout day football game, help at council-wide Camporee, establish a blood bank, conduct the March of Dimes, and also we are planning a full program of activities for the membership. We hope to double our membership in 1948-49.

—Warren Stookey, President.

INDIANA

Mu Chapter

Indiana University

All of our present plans for this Fall are service projects, first aid booth, distribution of new students' pamphlet, help to troops in town and aid to campus radio station. We are planning to carry out a more complete program than has been done on the campus since the war.

—Frederick M. Leist, President.

Alpha Gamma Chapter

Purdue University

Continued cooperation with the Boy Scouts of America and additional service to the local Girl Scout Council is planned. We are arranging the operation of a Lost-and-Found bureau. A bulletin board fund is under way and a board will be built for the use of all organizations on the campus. Plans are being formulated for a Scout Day here on our campus. These additional projects are to be carried out in addition to our regular services.

—Donald L. Dynes,
Corresponding Secretary.

Alpha Tau Chapter

Butler University

Alpha Tau Chapter plans to continue the work of ushering at the all-school convocations. We also are planning to sponsor an Ugly Man Contest. A big project will again be the collection of the containers for the Crippled Children Easter Drive. In 1948, we collected about 500 cans with almost \$1,000 in them.

—Alfred Daniel Gates, President.

Alpha Upsilon Chapter

DePauw University

Green Bar Convention, Scout leadership, March of Dimes, Red Cross drive, Scout Counselling, Community Chest, ushering, campus clean-up, and Free athletic day for local Scouts, are scheduled on our program this year.

—Richard H. Showalter, Secretary.

Gamma Mu Chapter

Evansville College

We have a campaign planned for the fall semester for adding new members, and will have at least two men on duty at all times during registration for aid to freshmen.

—Charles Wm. Chandler, Past President.

Delta Xi Chapter

Ball State Teachers College

We will always endeavor to live up to the ideals and purposes of Alpha Phi Omega

on our campus fully, as well as it is being done in so many other colleges and universities.

—Phillip W. Lewis, Past President.

Delta Omicron Chapter

Wabash College

Before school was dismissed this last Spring, a new spirit of fellowship and cooperation seemed to be founded with the chapter. Through this we hope to make the coming school year a most successful one for Delta Omicron Chapter on the Wabash Campus. We hope to do this through more activities and service.

—Tully C. Shaw, President.

Zeta Gamma Chapter

Valparaiso University

I predict that 1948-49 will see Zeta Gamma with a doubled membership. Without a doubt, it will become known as the outstanding service organization on the campus. Many of the projects have already been planned, and others are in the bull-session stage, to be acted upon soon.

—Arthur Gray, Jr., Past President.

IOWA

XI Chapter

Iowa State College

Xi Chapter is starting off the school year by sponsoring an all-college Tennis Court Dance the night before classes. Also, the first week our chapter is helping with an all-college picnic. We are continuing our work, of course, as merit badge counsellors. We will also help the college officiate at the all-state track meets. The March of Dimes and the Christmas Seal Drive are activities that we always conduct.

—Mort Bonesteel, President.

Omicron Chapter

University of Iowa

Omicron Chapter has finally come into its own after a severe setback because of the war. We are now in a position to forge ahead and assume a place never before enjoyed on our campus. Plans are already laid out for an extensive rushing program and many projects are ready to be done. We are now recognized throughout the campus as the service organization at Iowa and we feel that within a year Alpha Phi Omega will be the organization that students will want to get affiliated with because it will not only be the most desirable, but will be the most constructive campus organization.

—Charles T. Crane, President.

Omega Chapter

Drake University

This year Omega Chapter will carry forth its program of service with even more enthusiasm than it was carried on last year. Our social program will also be expanded. Our chapter will grow to about ninety or one-hundred members. We will be more active in campus activities and will grow even higher in the esteem of the students and faculty of Drake University.

—Berkeley P. Duncan, President.

Beta Epsilon Chapter*Iowa State Teachers College*

We intend to continue the projects that will be as timely next year as this, such as the football game flag-raising ceremonies and the March of Dimes. Our membership has been depleted by transfers and members leaving school so we are planning a full scale offensive in the matter of new members.

—Lester W. Bundy, Past President.

Delta Lambda Chapter*Coe College*

Delta Lambda Chapter will be host to the state conclave on the Coe campus, probably in October. March of Dimes and Red Cross drives will be conducted as usual. Our annual toy repair project for underprivileged children and the Easter Egg Hunt for the Children's Home will be held. We plan to be ready to undertake and accomplish any task or project that presents itself, that we feel we are capable of handling, as the need arises.

—Robert E. Funk, President.

Zeta Zeta Chapter*Graceland College*

The members of Zeta Zeta Chapter, upon beginning our first full year of service in 1948-49, plan to take advantage of all opportunities before us in our school, community and nation. We hope to have an outstanding Junior College Chapter of A-Phi-O and be a credit to our fraternity.

—Dick Andersen, President.

KANSAS**Lambda Chapter***University of Kansas*

Our goal this year is extensive organization pointed toward increasing our efficiency and scope.

—Ralph W. McClung,
Corresponding Secretary.

Pi Chapter*Kansas State College*

This Fall some of our projects are: securing a Wildcat mascot, Scout field day, sponsoring of picture show for chapter funds, smokers and picnics for members, and the regular community and national drives. For year-round projects there will be included work in Scout Troops, demonstration teams along Scouting lines and help at Boards of Review and Courts of Honor.

—Richard O. Hardy, President.

Beta Alpha Chapter*University of Wichita*

It is my belief that the year 1948-49 will be the biggest yet that Beta Alpha has experienced. Our newly founded Lost-and-Found department has already set our fraternity forward as the leading service organization on the campus. Our immediate concern is to increase the membership as much as possible to carry out our projects.

—Jess W. Taylor, President.

Delta Mu Chapter

Kansas State Teachers College, Pittsburg
We have an excellent staff of eight offi-

cers and twelve advisors ready to make Delta Mu Chapter bigger and better for the new year.

—Loren W. Robinson, President.

Epsilon Alpha Chapter*Kansas State Teachers College, Emporia*

At our final meeting last Spring, plans were outlined for a census at the opening of the new year and for increased service activities.

—Edmund Dunn, President.

KENTUCKY**Alpha Zeta Chapter***University of Kentucky*

Alpha Zeta plans to place a greater emphasis upon Scouting and Scout work. We also have big plans for establishing A-Phi-O chapters at several surrounding colleges.

—Reg Montgomery, Secretary.

Delta Theta Chapter*University of Louisville*

We plan to put in chapters in all the colleges in Kentucky and Southern Indiana. We will carry on our work in registration, and posting of grades. We will finish our work on the concrete benches, and keep our reputation of always being prepared to meet with any work which the school, community, or Scouting will call upon us to do.

—William W. Queen, President.

LOUISIANA**Alpha Epsilon Chapter***Louisiana State University*

Alpha Epsilon has just been reorganized at Louisiana State. This was last spring, and we feel that already changes have begun. This fall our emphasis will be on quality of members. Before, the quality was more or less overlooked. We have planned to aid in the Fall registration and if possible in Freshman Orientation. We will have a few work trips to the Istrouma Area Camp. We are going to aid the Scoutmasters of the local Troops in their programs.

—D. Allen Collette, Jr., President.

Beta Phi Chapter*Southwestern Louisiana Institute*

We will put on an extensive membership drive, be in charge of a bulletin board which will post time, date, etc. of college activities, and other projects.

—Paul Hood, Past President.

Gamma Upsilon Chapter*Tulane University*

Gamma Upsilon predicts the following for the 1948-49 session at Tulane University: A \$100.00 growth over last year's proceeds of the "Ugly Mug Contest," new interest in APO by conducting an information booth for freshmen and newcomers to the campus, the largest active membership since the chapter was established, more projects commencing of a new chapter at Dillard University completed than any previous year, and the es-

iversity for colored people. We predict a great year for A-Phi-O chapters all over the United States.

—G. Torrie Jones, President.

Zeta Chi Chapter*Centenary College*

We are going to take over the job of registering students for the Fall term, to put on a strong recruitment drive at the beginning of the school year, and to run the annual school picnic and are trying to usher at the schools' basketball games.

—W. P. Mayhan, President.

MARYLAND**Epsilon Mu Chapter***University of Maryland*

These will be our projects for the new year:

State-wide competitive Field Day for Scouts to be held on University of Maryland campus with cup to be given as prize, stimulate interest in Merit Badges by short skits and intensive instruction by chapter counsellors at the local troops, annual Easter Egg Hunt for underprivileged children, campus clean-up, Fall and Spring registration assistance, pads to be placed in phone booths, and other standing projects continued.

—Andrew A. Duncan, President.

MASSACHUSETTS**Alpha Chi Chapter***Massachusetts Institute of Technology*

In the Fall our first objective will be to secure a large pledge class. Our service projects will be many, including among others, providing merit badge counsellors, an extension of our service to the school, and several social events. We will have cooperation and joint projects with Boston University.

—Roy E. Hale, Jr., Secretary.

Gamma Eta Chapter*Springfield College*

During 1948-49, Gamma Eta intends to consolidate its work on service on a larger scale. The student handbook and the student directory will be our first projects. There will be a census taken of all former and present Scouts on the campus. Notepaper will be placed in all telephone booths in the living quarters. A college-sponsored Scout Troop will be activated and meet on and use college facilities. Some form of Field Day for the entire Hampden Council of the Boy Scouts of America is also in our plans for a bigger and more effective year for A-Phi-O.

—Samuel N. Slie, President.

Zeta Upsilon Chapter*Boston University*

We intend to extend the Children's Hospital Library, to increase our membership at least 100%, to establish at the university facilities for Scouts wishing to receive in-

struction for science merit badges, to make our chapter and the fraternity in general, the best known and best liked on the campus.

—Hantford L. Graham, Past President.

MICHIGAN

Beta Beta Chapter

Michigan State College

Beta Beta is looking forward to developing its fingerprinting project this coming year. Just as our projects increased in number and variety during the past year, we are looking forward to a continued increase for the coming school year and thus fulfill our obligations to the school, faculty, community and nation as well as to the brothers of the chapter, in service to others.

—William D. Staples, President.

Gamma Pi Chapter

University of Michigan

At the present, Gamma Pi's future plans closely follow those of the past year. Among these activities will be working on registration, supervising student elections, hospital visiting, "Tag Day" salesmen, as well as a variety of mixers and parties for members and prospective pledges. One of our major projected plans for the coming year is to foster the installation of A-Phi-O chapters at several neighboring colleges.

—Richard E. White, Past Secretary.

Epsilon Beta Chapter

Central Michigan College

Our main project will be the third annual "Frat Frolics." This is our biggest money-making project for service purposes.

—Ken Paulson, Past President.

Epsilon Lambda Chapter

Michigan College of Mining & Technology

Our main project will be "Homecoming Week." Under present agreement, we will be in charge of most affairs going on. We will also sponsor part of the "Winter Carnival" and conduct another "Charity Ball." Other projects are planned but these are the most outstanding.

—Melvin LaLuzerne, President.

Zeta Pi Chapter

Wayne University

As we are a relatively new chapter, we hope to continue in the building up and strengthening of our chapter as part of the foundation of our growing university. Thus our number one objective is to build up our organization as the means to the end of performing more and greater services. Already many plans are in their nucleus stage which should unwind into a full and complete program for the Fall following the basic concepts of our order.

—S. J. Elden, President.

MINNESOTA

Gamma Psi Chapter

University of Minnesota

Gamma Psi has outlined an ambitious pro-

gram of service for the next year. The most important project is possibly the helping of a Scout Troop overseas. We will also take boys of some of the less-chance local troops on hikes and camping. A large group of energetic men now compose Gamma Psi and there is no doubt but that this chapter shall grow and be the working embodiment of the ideals of Alpha Phi Omega.

—Lloyd W. Telschow, Vice-President.

Zeta Epsilon Chapter

Gustavus Adolphus College

We plan a "fall roundup" right after school convenes. Our hopes are to spend a weekend at the Minnesota Valley Council, BSA, Camp at Norseland, Minnesota. As service to Scouting and community we will continue to furnish help in the several local Scout Troops. We hope to make arrangements for a "Scoutmaster's Clinic" for the surrounding area so that Scouting in that area can get off to a rousing year.

—Dallas Young, President.

MISSISSIPPI

Epsilon Iota Chapter

Mississippi State College

Epsilon Iota has outlined a complete and new program for the 1948-49 term. We plan to work in close cooperation with the local Scout Officials and the college to initiate a helpful service program. The service field is wide, and we have the members and advisors that can meet the demand.

—Billy H. Burdine, President.

Epsilon Omega Chapter

University of Mississippi

Much of Epsilon Omega's time this Fall will be occupied with the centennial of the University of Mississippi. We have volunteered our services to the centennial committee. Also, we are going to sponsor a souvenir paper weight to commemorate the event. Epsilon Omega is working with the two local Scout Troops in many ways. We hope to create a large interest on the part of these Scouts in the Merit Badge program. We plan to have each member blood typed by the University hospital in event of an emergency. Also, we shall participate in the March of Dimes and the Cancer Fund Drive.

—John W. Dulaney, Jr., President.

MISSOURI

Epsilon Chapter

Northeast Missouri State College

We have started plans for the Fall quarter. It promises to be a busy and successful time for all. First off, we plan to sponsor a dance for the student body during the third week of school. There has been some criticism that there hasn't been enough social functions on the campus for the students, so we are making an attempt to alleviate this situation.

—William S. West, President.

Alpha Eta Chapter

Kansas City University

In the coming year Alpha Eta will strive to maintain its present high standards on the campus of the University of Kansas City. We will maintain the coterie of our previous years' service schedule and will attempt to start some new possible projects in our campus program.

—Sterling Wegener, President.

Alpha Mu Chapter

William Jewell College

We plan to carry on about the same projects except to a much greater degree. Our collecting blood task we hope to set up on a regular schedule, at least three times in the school year. We plan to have more interesting programs for the members and hope to increase our membership. Plans are made for more outdoor meetings.

—Eugene Troop, President.

Alpha Phi Chapter

Washington University

To continue and grow in our fields of service, to be better leaders and more efficient citizens, is our goal for 1948-49.

—Robert H. Hempe, President.

Alpha Omega Chapter

Kirksville College of Osteopathy & Surgery

Since Alpha Omega is in a professional school connected with a hospital and clinic, much of our service has been to provide new equipment. We believe this to be of greater benefit to more people than ordinary methods, so our chief efforts will be continued along this line.

—Harold I. Magoun, Jr., Past President.

Beta Eta Chapter

University of Missouri

Beta Eta, going into its second decade this year, plans to expand its service program during 1948-49. Besides the March of Dimes Ball, hospital courier service and other permanent projects, we are planning to start a service whereby students can find rides to their homes on weekends and vacations. We are collecting cast-off articles from student houses to sell at an auction to raise funds for the chapter service activities. At present, we are trying to find permanent headquarters here on the crowded Missouri campus from which we can direct such projects as our campus Lost-and-Found department.

—William E. Dye, Past President.

Beta Kappa Chapter

Central Missouri State College

These are our projects for the new year: All-school play night, a program designed to acquaint freshmen with the campus life, concessions at various football games and other school activities. March of Dimes, avail ourselves of ushering service, promote the "Keep off grass" campaign. Send Christmas greetings to each chapter, to promote inter-fraternity relations. We have other tentative plans, although these are the projects we shall definitely carry out.

—Harold Ferguson, Secretary.

Beta Mu Chapter

Southwest Missouri State College

We intend to increase our membership,

hope to sponsor many activities and projects and fully intend to build and maintain a service fraternity which can proudly display the A-Phi-O banner.

—Lee Maxwell, President.

Beta Xi Chapter

Westminster College

Our chapter has grown steadily in the past year both in membership and in activities, and we are looking forward to another fine year.

—Harry G. Corn, Past President.

Beta Omicron Chapter

Missouri School of Mining & Metallurgy

Next year, Beta Omicron will once again distribute desk-size blotters to the faculty and students of the Missouri School of Mines. A 'Beast' contest will be held, the proceeds going to the March of Dimes. The policy of acting as guides for Parent's Day, and ushering for student activities will be continued.

—Clarence Isbell, Recording Secretary.

Beta Upsilon Chapter

Northwest Missouri State College

There is already talk of service projects for the coming year of 1948-49. We have planned for smokers and new pledge classes. We plan to make the Red Cross Blood-Mobile an annual project. We shall, as previously, take care of the March of Dimes. We are anticipating a bigger and better year.

—John M. Tilton, President.

Beta Psi Chapter

Southeast Missouri State College

Beta Psi, in the school year of 1948-49, is going to strive for new "workers" to carry out its many and varied services. We plan to construct a small building at our concessions stand to house our concessions. Also, we plan to continue our past services to the college in such a way that Beta Psi will live up to its reputation as the best service organization on the campus.

—Harvey W. Heimann, President.

Gamma Xi Chapter

Rockhurst College

As usual, we will carry out our traditional projects: March of Dimes, Community Chest, Red Cross. In addition, tentative plans are being formulated for a CARE collection, an Interscholar Dance, and a sort of Carnival such as held last year, in order to raise funds for our future activity. We also plan an end-of-the-semester party for out-going members, and a get-together party at the beginning of the next semester.

—Frank Downey, President.

Delta Delta Chapter

St. Louis University

Delta Delta plans to launch its pledging campaign with initiation ceremonies to several pledges awaiting the Fall session and its annual presentation of key, and name plate placed on plaque, to 1947-48 freshman having highest scholastic average during his freshman year.

—H. D. Rightmyer, Past President.

Epsilon Epsilon Chapter

Missouri Valley College

At this time our activity program for the

new year is voluminous and will follow closely the accomplishments of last year. Certain activities not foreseen at this time will undoubtedly appear to be added to our work.

—Ralph E. Wienke, Recording Secretary.

Zeta Tau Chapter

Central College

Zeta Tau Chapter plans to rush new pledges at the beginning of the Fall semester. We hope to provide transportation for the away football games. We will strive to push the Christmas Seal campaign along. We will help the student body in any way that is desirable and necessary.

—Robert L. Felt, President.

NEBRASKA

Alpha Theta Chapter

University of Omaha

Our chapter made splendid growth in the past Spring term with sixteen men being added to our active membership. We are ready for another fine year.

—Carl W. Ruchte, Secretary.

Alpha Sigma Chapter

University of Nebraska

We will start immediately on the beautification of the campus. The school is doing a lot of work on the campus this summer. We will also help with registration for the Fall, Winter and Spring. This year we plan to have some get-togethers with the Omaha U. Chapter. We also plan to help with the local Scout Circus this winter. A big smoker is planned for right after school starts to get some new pledges. Other projects are only in the embryo stage at present.

—Harold S. McNabb, Jr., President.

NEW JERSEY

Nu Chapter

Upsala College

Nu Chapter expects to start off the new semester with a bang! We have the Recreation Hall to manage and it must begin as soon as registration is over. Campus parking must start immediately so that new students will get into the swing of things along with the rest of their adjustment. Preparations must be made for the annual homecoming and our own rush season so we will have our pledges ready to be initiated at our annual anniversary banquet, December 16, 1948.

—Robert P. Morgan,
Corresponding Secretary.

Delta Rho Chapter

Rutgers University

Our last year was a good year for Delta Rho Chapter. We really got into the swing of things and increased our prestige on campus tremendously. This year we intend to surpass our success of last year with an increased membership carrying on old activities and embarking on new ones such as our freshman week tours, Lost-and-Found service and care of bulletin boards.

—Arthur M. Lerner, Secretary.

NEW MEXICO

Delta Tau Chapter

University of New Mexico

Delta Tau is to get permanent use of an old stone cabin in the mountains as service to members; counsel freshmen and work during registration, give two scholarships, one to a Polish student who is D. P. in England and one to a Scout in New Mexico.

—Andrew F. Mitchell, Past President.

NEW YORK

Gamma Chapter

Cornell University

We intend to have a big membership drive early this Fall, and with the increased membership to do an even bigger and better job of the projects we worked on last year.

—Roy Butler, Jr., Secretary.

Phi Chapter

Syracuse University

In the coming semester we aim to continue our weekly Travel Aid bureau. We also are going to continue to sponsor the campus blood bank. In fact, in almost all cases, the service projects undertaken will almost inclusively be repeated in the coming year. We hope to take a more active part in Freshman Orientation. Plans are being formulated now for a weekend outing early this Fall.

—Herbert R. Levine, Past President.

Beta Iota Chapter

New York University

Beta Iota plans to continue its regular semester activities which include the Freshmen convocations and tours, Frosh-Soph tug of war, newspaper delivery, ticket agency and compilation of student activities lists. In addition to these, we are planning to introduce a series of weekly dances in the various school lounges, establish an information center for student use, supervise sale of tickets for school athletic events, run the fund raising campaigns for the Red Cross, Tuberculosis and Infantile Paralysis drives and, as usual, we will always be available to the administration for any service projects which may arise.

—Walter L. Roth, President.

Gamma Delta Chapter

School of Business, CCNY

Gamma Delta is heading into the new term with some big ideas and a good spirit. Our new pledge group contains some excellent material. We hope to see you at the forthcoming national convention.

—Fred Naddle, President.

Gamma Epsilon Chapter

City College, CCNY

Our long list of service projects last year were handled enthusiastically by the brothers and pledges. The activities giving us greatest campus recognition were aiding with freshman orientation, handling the student council elections and referendums, lost-and-found booth, and assisting at the March of Dimes ball.

—Norman Nadel, President.

Gamma Iota Chapter*Brooklyn College*

Gamma Iota looks forward to expanding its service projects on campus. We shall attempt to put through many of the projects we were not able to, due to the demands placed on us this past year. We look forward to sending more kids to camp next summer, and continuing aid for veterans still in nearby hospitals. Cooperation with Greater New York Chapters is part of our 1948-49 program.

—Henry G. Bayne, Past President.

Gamma Omicron Chapter*Queens College*

We intend to continue to be the most active service organization on the campus. This will include our conducting of the student council elections which we run every semester. We will usher at college concerts and graduation exercises and proctor at exams. We will hold our second annual September Struggle after the first week of school and we intend to make it an even greater social success than any of our previous dances have been.

—Joseph A. Heaney,
Past Recording Secretary.

Epsilon Gamma Chapter*Alfred University*

Definite plans have been made to assist the faculty in registration and to give a Thanksgiving and Alumni dance. Social events will include an outing at Camp Garton and possible initiation ceremonies and parties afterwards. We do all we can to better the appearance of our town and school campus and also we do the best we can to help any and all organizations when they need help.

—G. Carl Buessow, President.

Epsilon Zeta Chapter*Rensselaer Polytechnic Institute*

The executive committee will meet immediately after the start of the Fall term. Shortly afterwards a social will be held for all members. The Executive Committee at the last meeting planned to undertake these projects and laid appropriate plans for: Lost-and-Found, ushers at Town Hall, Campus Chest, and Fire Prevention articles which will be published in school paper.

—Donald A. Shaw, President.

Epsilon Nu Chapter*Oswego State Teachers College*

Epsilon Nu, because of its youth, intends to make its objectives known to the student body and faculty alike, by doing its utmost to promote friendly relations with other groups on campus, by extending membership both of students and faculty, by taking part in service projects for the community, by participating in school affairs to bring about better understanding between rival fraternities and rival sororities.

—Sam A. Modiano, Vice-President.

Epsilon Omicron Chapter*Long Island University*

Student elections, student handbook, class dances, faculty teas, guidance for students wishing to graduate.

—Martin I. Cohen, President.

Epsilon Sigma Chapter*University of Buffalo*

Our objectives are:

Community Chest drive, freshman orientation, football rallies, benefit dance for some charity, sale of Christmas Seals, collection for March of Dimes, assist at Fall and Spring registrations, Christmas party for orphans, drive to get more members to apply for Scout Executiveship, planning an Acquaintance Day program for prospective students at the University of Buffalo, provide ushers, etc. for school activities, forming a Lost-and-Found department and other projects.

—Robert F. Karlak, Vice-President.

NORTH CAROLINA**Rho Chapter***University of North Carolina*

Rho Chapter is getting into full swing this month: We have accepted a particular service project suggested by Alpha Pi Chapter of University of Miami, that of assisting a crippled girl who is coming here to take graduate work. This will be continuation of help rendered to this girl during her undergraduate years by Alpha Pi Chapter.

—William S. Roth.

Delta Phi Chapter*Johnson C. Smith University*

Delta Phi Chapter will launch new projects on the campus of J. C. Smith University such as the lining of parking space as the first object, draw up petition for a school zone sign for safety of all in zone of the school, name campus streets, etc. Due to the fact that the school really needs these services, Delta Phi Chapter has vowed to carry them out.

—Christopher H. Washington,
Corresponding Secretary.

NORTH DAKOTA**Alpha Lambda Chapter***North Dakota Agricultural College*

Objectives for 1948-49 are: (a) two delegates at Chicago convention, (b) assist college during Freshman Orientation, (c) sponsor March of Dimes campaign, (d) sponsor Spring Sing, Snow Modeling Contest, all-college dance and (e) provide leadership for local Scout units.

—R. E. Runice, Secretary.

Epsilon Theta Chapter*University of North Dakota*

By the use of census cards furnished by the national office, we expect to contact many prospective candidates for membership.

—William L. Backer, Secretary.

OHIO**Alpha Iota Chapter***Ohio State University*

Our ritual team has handled the installa-

tions of six new chapters in the past year, at Canton, Bowling Green, Toledo, Miami, Youngstown and Virginia Tech. We have enjoyed this extension work and are proud of our record. Get into the swing of extension. You'll like it!

—Doyt L. Spridgeon, President.

Delta Alpha Chapter*University of Cincinnati*

Active membership campaign in September. We will have to start from our present nucleus and build up to a larger active chapter by Christmas.

—Cal Gibbons, Past President.

Delta Gamma Chapter*Ohio University*

We have planned the following projects: Scout census at registration, freshman orientation smoker, campus Christmas tree and sing, Dedication of new dormitory, aid high school delegates at scholarship competition, March of Dimes dance, pep rallies, build picnic area (fireplace), homecoming registration, furnish alumni banquet & guides, usher at graduation exercises, conduct Scoutmasters' training course.

—John O. Cotton, President.

Epsilon Phi Chapter*Youngstown College*

October '48 will see the first annual "Masked Ball" sponsored to raise money for our Christmas decoration drive. This dance will be to sponsor fellowship at Youngstown College, and the Christmas drive to help the needy families of Youngstown. We plan on raising the flag, blood donations, March of Dimes, the "PreExam Drag" and the all A-Phi-O Follies.

—George B. Snyder III, President.

Epsilon Psi Chapter*Kent State University Canton*

I believe we can first increase our membership and our financial status so we can put more time on service projects. We hope to help at Camp Tuscazor, building and remodeling one or more cabins. We also plan to sponsor a radio program on Station WAND.

—Stanley E. Spring, President.

Zeta Delta Chapter*Miami University*

The coming year will be one whereby the principles of the fraternity will be practiced to the extent that they are known to the whole campus, through a program highlighted by planning for homecoming, leadership throughout Freshman Week, development of camp counselors clinic, a membership goal of one hundred, weekend camps, the sponsoring of a Scout Troop, and many other activities.

—Wesley Smith, President.

Zeta Kappa Chapter*Bowling Green State University*

We are planning the following projects for the fall and winter terms: Sponsor pep rallies, registration of upperclassmen students, an information booth for new students, a Lost-and-Found department, hospital service project, work with local troops, Ugly Man Contest to benefit the Red Cross.

—John Hughes, President.

Zeta Lambda Chapter*University of Toledo*

We will hold "Big Brother Day" which will include having a party for local orphans and taking them to a football game. Zeta Lambda Chapter will continue to help the Scout Council with leadership for troops, and will strive to have the name of A-Phi-O honored on campus with our annual campus projects.

—Robert E. Bartow, *President*.

Zeta Rho Chapter*Wittenberg College*

Due to our brief period of organization, our plans are not definite, but we will be on the job in the new year of 1948-49.

—Ralph E. Welsh, *President*.

OKLAHOMA**Beta Pi Chapter***University of Tulsa*

Our first meeting for the fall term is scheduled for September 16 when we will launch our activities for the year.

—William J. Treadgill, *President*.

Delta Beta Chapter*University of Oklahoma*

For the coming year Delta Beta Chapter of Alpha Phi Omega will continue the various services which we have started, all of which have been mentioned in our report. In addition we hope to make our Campus Guide Service a permanent project. We have as our membership goal a pledge for every member.

—Eugene E. Hicks, *Recording Secretary*.

OREGON**Delta Eta Chapter***Oregon State College*

At the beginning of the term, a large membership drive is planned, we will continue our checking and activities in coordination with the student body, school and local Scout Troops. This fall we should start right off, for we are to have a desk in the Student Union Building, which will provide us with a central point to coordinate our activities. Also, we plan to send two men to Chicago this December.

—Harry M. Wann, *President*.

Epsilon Kappa Chapter*Willamette University*

Epsilon Kappa Chapter will have a big year with every member having an active part through extended activities both on and off campus. One major project will be to develop a roster of Scout skill specialists available to local Scout units for their programs.

—James Nickel, *Vice-President*.

Zeta Xi Chapter*Southern Oregon College*

Our plans for the new year out-do last years' limited program tremendously. In service to our school we plan constructing an outdoor recreational area on some prop-

erty unused but owned by the school. We are preparing to repaint this areas Scout headquarters this coming fall term. We shall also endeavor to encourage a brother college into the fold of Alpha Phi Omega.

—Robert H. Beach, *President*.

ZETA PSI CHAPTER*University of Oregon*

Concrete plans toward aims of group have been formulated and inaugurated. We have established information service for new students, are aiding in school functions, and are assisting Boy Scouts in many of their projects. Increased membership allows us to carry out work throughout university and city. This first year of Zeta Psi Chapter offers opportunities innumerable for individual and community betterment.

—Virgil Tucker, *President*.

PENNSYLVANIA**Alpha Chapter***Lafayette College*

Services will be expanded beyond those reported last year to include sponsorship of more recreational and party events for the student body, ushering at campus affairs, managing coat room at entertainments, a rally for Scouts in the Fall, and a blood typing service for local hospital emergencies.

—Graham W. Hoffman,
Recording Secretary.

Beta Chapter*University of Pittsburgh*

In the year to come, we of Beta Chapter hope to increase our membership to double its present size. We hope to take over all proctoring at all placement exams at the university. We will continue our ushering at Freshmen Week activities, assisting at elections and ushering at commencement and many other activities.

—John S. McCready,
Corresponding Secretary.

Kappa Chapter*Carnegie Institute of Technology*

Further increase in membership. Continuing of last year's campus projects. Aid in registration, set up student book exchange, work with Campus Community Chest, and aid to Scout Council and Troops, also provide some social activities for members.

—David L. Wallace, *Past President*.

Alpha Beta Chapter*Pennsylvania State College*

Arrangements have been started in the summer months to reactivate Alpha Beta Chapter. Ten men have been pledged as a nucleus and we anticipate no trouble in getting the program rolling in the fall term.

—Leslie G. McCracken (Alpha Psi)
Chairman, Reactivation Committee.

Alpha Psi Chapter*Lehigh University*

Our members have returned in time to act as student advisors to six hundred new students during freshman week. We are repeat-

ing the used book exchange during the registration period, and will have the Senior Scouts of Eastern Pennsylvania as guests on campus October 16 for luncheon, program and Gettysburg football game. We will also continue participation in local council activities.

—Byron C. Hayes,
Chairman of Advisory Committee.

Delta Zeta Chapter*University of Pennsylvania*

The Delta Zeta Chapter should show increased strength and vigor next year if the progress of the past year is continued. Alpha Phi Omega has gained prominence on the University of Pennsylvania campus and shall continue to do so under the new leadership. To strengthen the fraternity from within new membership requirements have been established and the constitution and by-laws are being revised.

—Richard L. Creviston, *Past President*.

Delta Upsilon Chapter*East Stroudsburg State Teachers College*

In the coming year we plan to build our membership and also our prestige, through our example in the service to the new students. Some of our objectives are: Improved recreational facilities, orientation of the freshmen, making available immediately textbooks for freshmen and the improvement of equipment used freely by all students, such as school athletic equipment, tennis rackets, baseball gloves, etc.

—James P. Cullen, *President*.

Zeta Theta Chapter*Drexel Institute of Technology*

Our chapter plans to participate in the same projects as during the past year. We will hold ourselves ready to assist other organizations. Plans to improve on present conditions around school and further our service to the student body, faculty, etc. Our project at the lodge, that of improving the grove, is ready to advance.

—Warren Backenstoe,
Corresponding Secretary.

Zeta Iota Chapter*Temple University*

Zeta Iota will start the new term by helping with registration and getting a complete census of former Scouts on campus, continuing by increasing membership, bolstering Scout troops in vicinity of the campus, serving as ushers at school functions, and simplifying parking problems on the campus.

—Henry A. Walens,
Corresponding Secretary.

SOUTH CAROLINA**Gamma Lambda Chapter***Clemson College*

Gamma Lambda is conducting a census this fall among 4,000 men of our college, using the printed census cards furnished by the national office.

—William E. Darby, *President*.

TENNESSEE

Zeta Eta Chapter

University of Chattanooga

Zeta Eta Chapter will serve as guides and otherwise participate in Freshman Orientation Week activities; furnish and distribute campus maps to all students, supervise the ushers at the football games, assist in the student elections, operate the book exchange (second-hand books), participate in Red Cross and Community Chest drives. Plans are also being made for projects in cooperation with the local Boy Scout Council.

—Robert J. Bradshaw, Jr., President.

TEXAS

Alpha Omicron Chapter

Southern Methodist University

We predict that the new administrative year will be the greatest in the chapter. We plan an even better chapter, both in spirit and in service to the university, students, and members. The March of Dimes campaign will be even greater than this year as will the Christmas tree for needy families. We plan to render more services to the school and to the students.

—Edward L. Lowe, President.

Alpha Rho Chapter

University of Texas

With Bart Strayhorn, a ball of fire if ever there was one, as our new president, there's every indication that Alpha Rho will have one of the most successful years of its history. Our particular goal is 3000 man-hours of service each semester, which we have already prepared to secure from orientation and registration proceedings when school opens in September, the student elections, operation of the grid-graph (an APO invented gadget that's one step behind television in reporting out-of-town games), solicitation for the Campus Chest, an expanded guide tour system, and other projects, including our extension work, which will keep us hopping all year long.

—Lee A. Gilman, Secretary.

Beta Sigma Chapter

Texas Technological College

Our objectives are: (1) To adopt an area on the campus and beautify it, designed to strike up interest among other organizations to do the same; (2) To carry on Red Cross Blood Bank on campus; (3) To improve mailing conditions on the campus.

—William R. Burton, Past President.

Gamma Rho Chapter

North Texas State Teachers College

Gamma Rho hopes to grow much more in membership. Work to reactivate East Texas chapter will begin again this Fall. More parties for the orphans will be had, and another Scout Visitation Day.

—Paul G. Sagen, President.

Delta Pi Chapter

Trinity University

Delta Pi has as its goal next the installing of individual mail boxes and the fire alarm system we purchased this year. We plan on having four initiations, three outings, three dances, and meetings four times a month. We expect to increase our man-power three fold, make the presentation of awards at the local Courts of Honor, and judge at the district and council camporees. We also expect to sponsor several drives (Red Cross, Community Chest, March of Dimes), also usher at football games and other events.

—Manuel DeLarrea, Jr., President.

Delta Chi Chapter

Texas College of Arts and Industries

We plan to have a bigger and better organization. We plan to carry on such projects as our annual George Washington Dance, hat check service, March of Dimes, Red Cross drive, and ushering at home football games. We plan to help in the student elections, and to carry on in every way in which we can be of help to our student body, faculty, community and nation.

—Lionel N. Burton, Recording Secretary.

Delta Omega Chapter

University of Houston

A-Phi-O will once again win the Cougar School Spirit Award for the most outstanding organization on the campus. We will remain the most active organization in our community for the furthering of service to campus, community, and brothers.

—Lee Krauss II, President.

VIRGINIA

Zeta Beta Chapter

Virginia Polytechnic Institute

More Tech Talent shows, Sunday movies, campus information booth, assist in registration, sponsor Senior Scout unit, Christmas party for kids, provide program ideas for Cubbing and operate sign service for campus, will be our objectives for early Fall.

Fred W. Culpepper, President.

WASHINGTON

Alpha Xi Chapter

Washington State College

We have made plans for many projects in 1948-49. We will participate in the orientation of new students, stage a Senior Scout Bivouac on the campus for Scouts from sections of Washington and Idaho, publicize our chapter at an Organization Day, continue guide projects for visitors to the campus, and we will devote the proceeds of our annual "Handsome Harry" contest to another featured project.

—Wendell Klossner, President.

Gamma Alpha Chapter

University of Washington

Our chapter will continue activities on the campus with special emphasis on the ampi-

theatre. Also, we will continue our activities in Scouting in this area whenever there is an occasion that our chapter may be of service.

—Robert J. Hilliard, President.

Epsilon Rho Chapter

Eastern Washington College of Education

At the beginning of the new year we must first make plans for a float to be entered in the "Homecoming Parade." Our second consideration will be our Scholarship Fund, which will need approximately \$35 before the new year. The first of December we must consider putting a twenty-foot Christmas tree on the porch of the Administration Building. This project has been accepted as an annual affair. Near the first of March we shall again conduct a "Handsome Harry" contest. It has not yet been determined for what the proceeds will be used.

—Kenneth Slater, President.

WISCONSIN

Upsilon Chapter

Milwaukee State Teachers College

Upsilon Chapter will carry on the traditional projects it has in the past and will endeavor for the coming year to become more intimately associated with the Boy Scout movement. We will keep Alpha Phi Omega as it has been in the past, the most respected fraternal organization on the campus.

—Edwin Gross, President.

Alpha Nu Chapter

St. Norbert College

We here at St. Norbert shall endeavor in the coming year to make Alpha Phi Omega a more vibrant organization on our campus. We intend to embark on a campaign of service to our fellow students and to make each and every one of them aware of our chapter and the work it is doing. Thus our primary service objective shall be one of service on the campus in 1948-49.

—Norman J. Alesch, President.

Beta Theta Chapter

University of Wisconsin

We intend to emphasize establishing a full faculty committee, institute an active program of merit badge instruction and handicraft teaching for the local troops, a patrol leaders' training course, a canvass of the stadium for the community chest, take charge of the charity ball and the auction for the Red Cross and other needed projects.

—Henri A. Fribourg, Past President.

Epsilon Upsilon Chapter

Oshkosh State Teachers College

We anticipate a project in conditioning a winter lodge for winter Scouting in this area. The Christmas basket project has become an annual activity of our group. Since we are a newly chartered group a good deal of work will be required to make the chapter function as smoothly as possible.

—Ben Johnson, Jr., President.

BULLETIN BOARD

MAILING LIST

Careful effort is being made to insure delivering the TORCH AND TREFOIL to the correct address of all active members, pledges and advisors. Your National Secretary has asked each chapter to send a current roster of names and addresses of men who have returned for the Fall term, to enable the correction of the mailing stencils. Your helpfulness in this regard will be much appreciated.

Names of new pledges will be added to the mailing list when their applications (pink sheets) arrive. Also, new lists of officers, when elected, should be promptly reported to the office.

GET THE CAMERA BUG

It is recommended that each chapter give particular attention to securing pictures in connection with your various projects of this year . . . pictures showing members and pledges at work in your service activities.

Pictures offer the best means of letting other chapters know about your projects. They tell your story much more vividly than just words. Ask your publicity committee to take pictures on all possible occasions.

Watch for pictures of chapter projects in the forthcoming issues of TORCH AND TREFOIL, and send pictures from your chapter to be included in the future.

CONVENTION FUND

Has your chapter discussed ways and means of earning a Convention Fund to pay the expenses of your two official delegates to the forthcoming national convention? The values which will come to your chapter from participating in this convention will deserve all the effort needed to earn the required amount to send your delegates. The costs of hotel and meals will soon be announced to all chapter officers and advisors in the National Bulletin.

It is appropriate to appoint a special committee to have charge of earning a Convention Fund.

EXPANSION

Last year was the greatest year of growth in the history of Alpha Phi Omega, with expansion in all chapters and with thirty-five new chapters being chartered, bringing the total roster to 167.

Indications point to continued rapid growth during 1948-49. Numerous inquiries have been received during the summer about how to establish new chapters.

Does your chapter have an Extension Committee? A group especially appointed to make contacts with nearby colleges will be very effective in helping establish new chapters this year.