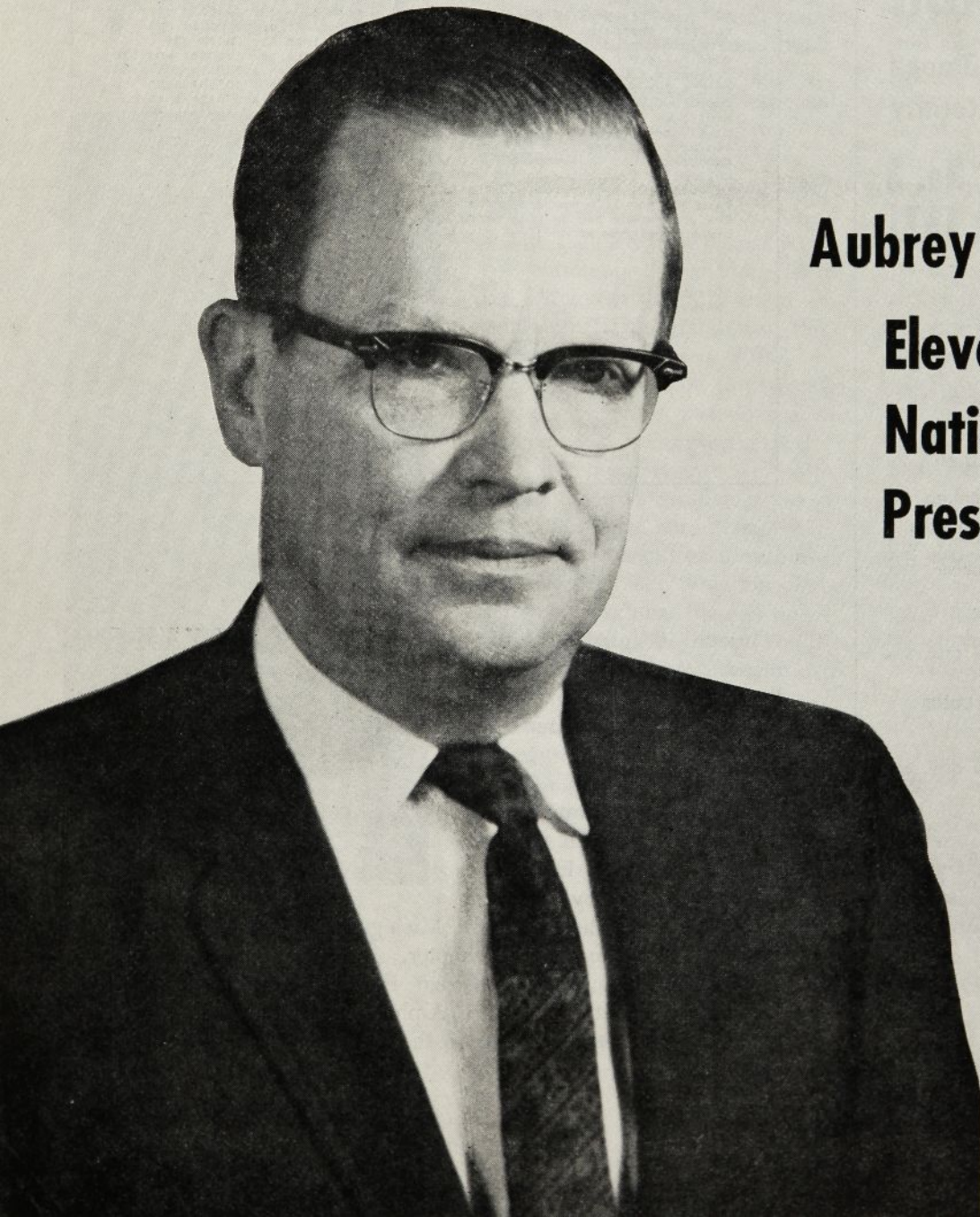


# **Torch & Trefoil**

**Winter/Spring '71**



**Aubrey B. Hamilton**

**Eleventh  
National  
President**

# Torch & Trefoil

Alpha Phi Omega  
National Service Fraternity

Volume 46, No. 3  
Winter/Spring 1971

## National Officers

Aubrey B. Hamilton.....St. Louis, Mo.  
National President  
Lt. Col. Lucius E. Young  
Washington, D. C.  
National Vice President

## Executive Committeemen

George F. Cahill.....Pittsburgh, Pa.  
Irwin H. Gerst  
Palos Verdes Peninsula, Calif.  
Douglas M. Harris.....Edison, N. J.  
Richard L. Tombaugh.....Lafayette, Ind.  
Dean Lewis N. Jones.....Lubbock, Tex.

## Legal Counsel

Dr. H. Roe Bartle.....Kansas City, Mo.

## National Executive Director & Editor

Joseph Scanlon.....Kansas City, Mo.

TORCH AND TREFOIL is issued regularly four times a year, October, December, March and May, from Office of Publication, 1100 Waltower Building, 823 Walnut Street, Kansas City, Missouri 64106. Printed by Smith-Grievens Company, Printers and Lithographers, Kansas City, Missouri. Second Class Postage paid at Kansas City, Missouri. Subscription price \$1.50 per year.



Alpha Phi Omega  
DELTA OMEGA CHAPTER  
UNIVERSITY OF HOUSTON  
HOUSTON, TEXAS 77004

February 8, 1971

Mr. Joseph Scanlon  
1100 Waltower Building  
Kansas City, Missouri

Dear Mr. Scanlon,

Returning from the 1970 National Convention, Delta Omega enthusiastically rededicated itself to the perpetuation of the high ideals for which Alpha Phi Omega stands. We feel that a truly significant means of perpetuating the program for others to enjoy and serve in the future is a contribution to the Endowment Fund. Enclosed is a check for fifty dollars.

In conjunction with this gift, it is our wish that the following message be sent to the rest of the national fraternity via the next edition of the Torch and Trefoil.

"We of Delta Omega at the University of Houston have just made a very selfish investment. We are sure that it will pay off or we would not have put our money into it. By placing the \$50. into the Endowment Fund for A.P.O., we are providing a boost to our chapter members and the rest of A.P.O. that we need to work with to accomplish A.P.O.'s goals in the future. Most chapters will spend from \$5. to \$50. on the next beer-bust, or party, or picnic that you have. Go ahead and have that party; we will, but we dare you to put as much into the Endowment Fund this year as you did for just one party. If you only send in \$5. you can do a lot more good for yourselves than by shrugging it off. The Endowment Fund is around \$90,000. That isn't much for the largest collegiate fraternity in the world. If you, the active chapters, pitch in even \$10. apiece for 500 chapters, the fund will hit \$95,000. Now then all you life members and alums out there with the real bread. If the undergrads can do this much, what's keeping you? Invest in A.P.O.-highest returns around!"

Craig E. Litton  
Raymond A. Dahlman  
David M. Novotny  
D. Craig Roberts

Craig E. Litton  
Raymond A. Dahlman  
David M. Novotny  
D. Craig Roberts

Brothers in service,  
Harry Thomson  
Corresponding Secretary  
Delta Omega Chapter

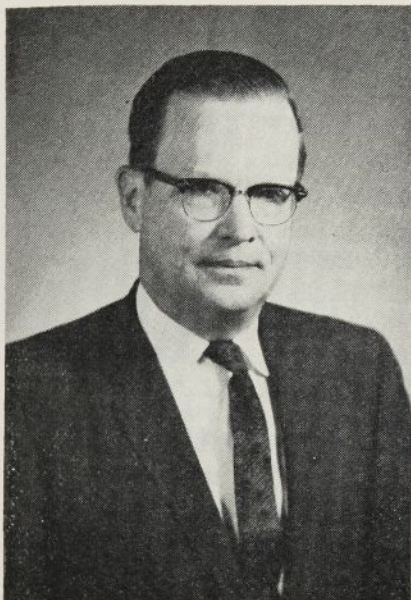
## Victorson and Scanlon Honored

Joseph Scanlon, executive director (center) receives the key to St. Joseph, Mich., while visiting there to attend the regional convention in the state. With Scanlon (left to right) are Rev. Frans Victorson, executive board member; St. Joseph Mayor Ehrenberg; Scanlon; Tom Foley, recording secretary of the hosting Lake Michigan College chapter and Pat Partridge, president of the chapter.



The 1970 Convention awarded Pastor Victorson the National Distinguished Service Award, Alpha Phi Omega's highest honor. Since then he has been chosen the National Lutheran Director of Scouting.

# Message From the President



The inspiration and enthusiasm of the Dallas Convention highlighted a perceptible change in the hopes and aspirations of the delegates present for an even greater involvement of all of our members with the service opportunities that surround each chapter. The perceptible change is the increased depth of these hopes and aspirations with respect to the commitment of individuals and chapters to aid in solving pressing social problems, especially those problems affecting the communities of which chapter members are a part during their college years.

The theme struck by each convention speaker made evident the scope and depth of these aspirations. The attention of the delegates was focused at the opening session upon the splendid record of chapter participation in service projects during the past year, but the delegates were also confronted with problem areas in which improvement in chapter administration and relationships were needed. The attention of the delegates was next focused on the role Alpha Phi Omega could play in supporting the Peace Corps in its translation of national ideals to meaningful service to communities and individuals. Their attention was then called to the wide areas open for leadership and service in fulfilling the emotional and material needs of disadvantaged children in the ghettos in every city in this country. The challenging message at the closing banquet of the convention illuminated the coming of age of Alpha Phi Omega by sharply defining the fact that the present generation of chapter members

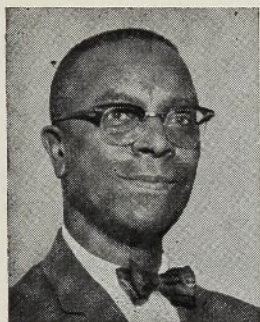
were assuming, and indeed many have assumed, major responsibilities of citizenship while in college. Such circumstance requires recognition of the greater maturity and larger responsibility that must be brought into the service projects and activities of Alpha Phi Omega if they are to receive continued acceptance and appreciation by students, faculty, and administrators, and if they are to constitute a meaningful involvement on the part of the members who give and the persons who receive service.

The resolutions adopted and proposed on the floor of the convention by the delegates at the legislative sessions articulated the goal of increased and expanded responsibility in service project involvement both nationally and locally in cooperation with other recognized organizations. Alpha Phi Omega is not to be restricted in its service programs to individual or committee projects for campus service alone. This expanded horizon is not a new objective, but an old one for Alpha Phi Omega. The change of emphasis to be noted is the increased awareness of meaningful service that won the support of our convention delegates.

Your national officers and directors have determined to establish task forces to recommend guidelines and programs that will place into effect those ideals and objectives that became so apparent at our convention in Dallas. The reports and program recommendations of those groups will be brought to your attention at intervals during the next two years. It is anticipated that every

*(Continued on next page)*

# Lucius E. Young Elected APO Vice President



**Lucius E. Young**

Brother (Lucius E.) Young, co-founder of Zeta Phi '48, Howard University, is currently supply management representative (logistician), director of requirements and procurement, U. S. Matériel Command at Washington, D. C. During his service in APO for more than two decades he has been advisor to chapters in the national capital area and has served as national vice president of the Alumni Association. He was elected to the national board of directors in 1966, elected a national executive committeeman in 1968 and in 1970 elevated to the position of national vice president. He is an active Scouter, member of the Cardinal's Committee of the Laity, Archdiocese of Washington, D. C., and a regional officer in Toastmaster's International.

## Con '70

Aubrey B. Hamilton of St. Louis is Alpha Phi Omega's new national president. The delegates to Con '70 held at Dallas, elevated him by acclamation from vice president to national president. His special message to all brothers will be found in this issue.

Brother Hamilton became a member of Alpha Phi Omega in 1936 when he took the lead in founding Alpha Phi chapter at Washington University, his alma mater.

Colonel Lucius E. Young was elected national vice president. The delegates chose as national executive committeemen: George F. Cahill, Pittsburgh, Pa.; Irwin H. Gerst, Los Angeles; Douglas M. Harris, Edison, New Jersey; Dean Lewis N. Jones, Lubbock, Texas; and Richard L. Tombaugh, Purdue University, Lafayette, Ind.

Six regions elected regional representatives. They are: Region I, Gerard J. Kennedy; Region III, Lorin A. Jurvis; Region IV, Dr. E. Jerome Zeller; Region V, Perry W. Correll; Region VII, C. P. Zlatkovich; and Region IX, William J. Vining.

The regional representatives in the remaining four regions continue in office until 1972.

*(Continued on page 11)*

## Message From The President

*(Continued)*

member of Alpha Phi Omega willing to strengthen his commitment to service or to broaden his service experience will have that opportunity through the imple-

mentation of the task force recommendations. Should many of those recommendations become a part of a broadened and deepened program of Alpha Phi Omega, as they shall with our united support, we can proudly proclaim at our next convention in Denver that the objectives set in Dallas have been fulfilled and surpassed.

May we join as brothers to bring our brotherhood to those who

need fellowship. May our leadership so kindle our flame of friendship to our fellow men that our service to them may enrich their lives and enable them to achieve their desire for significant development. May we remain humble in our endeavors so that our small tasks in service, as well as those of larger scope, receive our full measure of devotion.

*Aubrey B. Hamilton*

# National Executive Committeemen

The National Convention elected five national executive committeemen, positions authorized by the Constitutional Convention of 1967. These five brothers, elected at large by Convention delegates, serve with the president and vice president as members of the executive committee of the national board of directors.



**George F. Cahill**

Brother Cahill, Alpha Gamma '46, Purdue, is council Scout executive of one of the 20 largest councils in America. He is a lifetime member of the national board of directors by action of the delegates at the '68 Convention. His distinguished APO record includes service as chapter president, sectional leader, editor of *Torch and Trefoil*, member of the board since 1948, and fiscal agent for the Fraternity's Endowment Fund. Mr. Cahill is chairman of the national finance committee.



**Irwin H. Gerst**

Brother Gerst was a charter member of Epsilon Chi '47, Los Angeles City College. He is an assistant program manager for planning and control for a major spacecraft program at TRW Systems. He has been on the national board of directors since 1950, serving for two terms as national second vice president. He has participated in nine National Conventions. The Southern California section has more than tripled under his leadership. The Fraternity in 1966 presented him the National Distinguished Service Award, its highest recognition. In 1970, it elected him to life membership on the national board of directors. He now serves as chairman of the National Convention and conference committee.



**Douglas M. Harris**

Brother Harris, Alpha '50, Lafayette College, has been a leader in the Fraternity on chapter, sectional and national levels. He is best known for his direction of the national alumni committee, and prior to that for his service as president of the National Alumni Association. In this latter capacity, he served as an ex-officio member of the national board. He is supervisor, plant engineering, Tenneco Chemicals, Inc., an elder in the Presbyterian Church, a Scout

commissioner, and member of the American Institute of Chemical Engineers, National Association of Corrosion Engineers and Industrial Management Clubs. He is chairman of the national extension committee.



**Richard L. Tombaugh**

Brother Tombaugh, Alpha Gamma '57, Purdue, is director of student loans at Purdue University. That university awarded him a degree of Bachelor of Physical Education in 1961. He is currently a candidate for the degree of Ph.D. in Education at Michigan State University. He was Alpha Gamma's outstanding Pledge in 1957. He has served as chapter president, chapter National Convention delegate, faculty advisor, presidential representative, and as sectional chairman. He has served Scouting as a summer camp staff director, and as a scoutmaster and council camping and activities committee member. His professional organization memberships include American Personnel and Guidance Association, American College Personnel Association and the National Association of Student Personnel Administrators. He will serve as chairman of the national alumni committee for 1970-'72.



**Dean (Lewis N.) Jones**

Brother Jones, Beta Sigma, is dean of students at Texas Tech, the home of Beta Sigma in which he has held membership since 1948. He is one of Tech's all-time football greats. He was chosen to play in the 1938 All-Star game at Dallas. He has served Alpha Phi Omega as chapter advisor, sectional chairman for West Texas, member of the national board of directors for the past decade, and advisor to National Convention committees for 1960-'62-'64-'66-'68 and '70. Delegates to the Dallas Convention elected him to serve on the national executive committee for 1970-'72. President Hamilton appointed him to be chairman of the national service committee. Dean Jones is "Mr. APO" to West Texas chapters and to many others for his outstanding work as National Convention coordinator for 1970.

# Regional Representatives

The 1968 National Convention established ten administrative regions to bring Alpha Phi Omega's national organization closer to chapters and campuses. Each region is composed of approximately forty chapters and each is headed by a Regional Representative, elected by delegates of chapters in that particular region.

The new Regional Representatives typify Alpha Phi Omega. Most of them are recent graduates. Practically

all have been undergraduate chapter presidents and in many instances they have served as sectional representatives and sectional chairmen.

Regional Representatives are members of the national board of directors. They are responsible for working with and through sectional chairmen. Each of them serves as a member of the national extension committee and each will assist in helping sections improve their conferences and their general program of service.

## Region 1

*Gerard J. Kennedy, Nu Psi '62*

*New England, New York City, New Jersey, Puerto Rico*

Administrative assistant to vice president for Business and Finance, Montclair State College, Upper Montclair, N. J. Formerly assistant director of admissions. Graduate, Montclair State, M.A., 1966. Special courses in administrative officers—higher education department, Columbia University, 1967-1969. Active Scouter and council Explorer leader. Eagle, district training chairman; executive board member. Has served A Phi O as founder and first president, Nu Psi chapter. Sectional vice chairman and chairman, New Jersey. Elected regional representative for 1970-'74 at Con '70.

## Region 2

*Warren C. Weidman, Mu Eta '58*

*6 Upstate New York—Central and Eastern Pennsylvania*

Design Engineer, Conoflow Corporation. Holds degrees from Al-

bright College, home of Mu Eta, and from Drexel Institute of Technology, and Temple University. Lutheran Church School Superintendent. Member, Instrument Society of America. Served APO as sectional representative and sectional chairman. Received Philadelphia APO Alumni "Man of Year" award in 1968.

## Region 3

*Lorin A. Jurvis, Delta Nu '53*

*Maryland, Delaware, the District of Columbia, Virginia, North Carolina*

Regional executive officer for Latin America, United States Information Agency, 1970; with USIA since 1959. Detroit and Kansas City public schools; Yale University, B.A., 1956 (Political Science). Water safety instructor, American Red Cross; Potomac Appalachian Trail Club. Enthusiastic Scouter, Eagle, Silver Beaver, Explorer leader. Has served A Phi O as presidential representative, sectional chairman, arrangements chairman for Con '68, member na-

tional board of directors, 1968; regional representative, 1970-'74.

## Region 4

*Dr. E. Jerome Zeller, Delta Kappa '48*

*Alabama, Georgia, Florida, Mississippi, Tennessee, South Carolina*

Distinguished administrator, author and churchman; president, World Studies Institute, 1969-'70; currently teaching at DeKalb College, Atlanta, and engaged in private business. Dr. Zeller holds three degrees from Emory University; B.A. in Journalism, B.D. in Theology and M.A. in History. His Ph.D. in Adult Education was conferred by Indiana University. He has studied abroad at St. Augustine's College, Canterbury, England; University of Utrecht, The Netherlands, and American University at Cairo, Egypt, where he was a Fulbright Scholar. He served with the U. S. Army in the Second World War in the Southwest Pacific as a chaplain, retiring with the rank of captain. He was ordained a priest of the Episcopal Church in 1954 and

Gerard J. Kennedy  
Region 1



Warren C. Weidman  
Region 2



Lorin A. Jurvis  
Region 3



Dr. E. Jerome Zeller  
Region 4



Perry W. Correll  
Region 5

Picture  
Not  
Available

is the author of a number of articles on church history and adult education. He has served Alpha Phi Omega as chapter officer in Delta Kappa at Emory University, as sectional chairman for Georgia. Elected regional representative for 1970-'72 at Convention '70.

### Region 5

*Perry W. Correll, Alpha Iota '59  
Ohio, West Virginia, Kentucky,  
Western Pennsylvania*

Administrative specialist, Division of Right of Way, Ohio Department of Highways. Graduate of Ohio State University, class of 1962, with major in Business Administration. Active Scouter. Serving as district Explorer chairman, Central Ohio Council and as Explorer post advisor. In Alpha Phi Omega he has served as president of Alpha Iota, as a member of the Central Ohio Alumni Section and as advisor to Alpha Iota. He has also served the Ohio section as a conference chairman, a sectional staff leader and as a delegate to the National Convention. Elected regional representative for 1970-'74.

### Region 6

*Lawrence L. Hirsch, M.D., Beta  
Gamma '40*

*Illinois, Indiana, Michigan*

Medical director of ambulatory care, Illinois Masonic Medical Center. Thirty-second degree Mason, Shriner, Kiwanian, vice president, American Humanities Foundation. Member, executive board, Chicago

Council, BSA. Silver Antelope, Silver Beaver, APO life member. YMCA. Founder, APO Alumni movement. Trustee, APO Endowment Committee. National board member since 1954. Holder, National Distinguished Service Award. Member of various national, state and local medical societies.

### Region 7

*Charles P. Zlatkovich, Alpha Rho  
'64*

*Texas and Louisiana*

Managing editor, Texas Industrial Expansion, a monthly publication of the Bureau of Business Research since April, 1970. Research assistant, Missouri Pacific Railroad, 1968-1969. Graduate student, School of Philosophy, University of Texas, seeking Doctor of Philosophy degree in Resources, Transportation and Economics. Holds degree of Master of Business Administration, University of Texas, '68. Has served A Phi O as chapter officer, assistant sectional chairman, sectional chairman and delegate to National Conventions of '64, '66, '67, '68, '70. Regional representative, 1970-'74.

### Region 8

*Paul D. Arend, Gamma Xi '40*

*Missouri, Kansas, Arkansas, Colorado, New Mexico, Oklahoma*

Registrar, Rockhurst College, the home of Gamma Xi, of which he was a charter member. He holds degrees from Rockhurst and

UMKC. Enthusiastic Scouter, Silver Beaver, holder of St. George Award, National Jamboree Scoutmaster. World War Two Army veteran. Catholic. Knights of Columbus. APO faculty advisor and sectional chairman.

### Region 9

*William J. Vining, Gamma Mu '47  
Minnesota, Wisconsin, Iowa, North  
Dakota, South Dakota, Nebraska*

Sales and service representative, National Gypsum Company since 1958. John Deere Company dealer-customer sales relations, 1953-1958. On active duty U. S. Navy, 1948-1952. Graduate in Business Administration, University of Wisconsin—Milwaukee. Active in Scouting, church work, Mankato, Minn. Rotary Club. Married. Two sons. Has served A Phi O as chapter officer, chapter advisor, sectional chairman for Minnesota and the Dakotas. Elected regional representative, 1970-'74.

### Region 10

*Earle M. Herbert, Chi '59*

*California, Oregon, Washington,  
Idaho, Nevada, Utah, Montana,  
Arizona, Alaska, Hawaii*

Medical research technologist, Wadsworth Hospital, Los Angeles, Veterans Administration Center. Armed Forces veteran. Chapter officer and advisor, Chi, UCLA. Sectional representative, sectional chairman. Delegate '67 Constitutional Convention and '64-'66-'68 National Conventions.

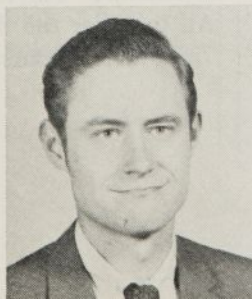
Lawrence L. Hirsch, M.D.  
Region 6

Charles P. Zlatkovich  
Region 7

Paul D. Arend  
Region 8

William J. Vining  
Region 9

Earle M. Herbert  
Region 10



# action...

Yes, PLEASE!



Armed with materials from Penn State, brothers of Alpha Beta and Gamma Sigma Sigma girls painted 15 trash cans on the campus with plans to finish the project this spring. The cans were painted two shades of blue, dark at the bottom, light at the top, with "PLEASE" stenciled in white.

## Size Is No Handicap

8 Although Beta Rho at the University of Arkansas is smaller this year, Bill Graham, 1st vice president, reports none of the service projects have been curtailed. Harder work, he says, is, in fact, strengthening their brotherhood. Service projects include: helping with registration and orientation; working on Red Cross projects, such as blood drives; working on

the city-wide cleanup program; helping at a Boy Scout camporee; distributing student directories; and providing ushers at home football games.

## Use Sports to Increase Brotherhood

Chapter members of Beta Mu, Southwest Missouri State College, Springfield, are enthusiastically participating in intramural sports to form a stronger brotherhood. Service projects last semester included a food drive for underprivileged families; utilizing pledges to referee basketball games at the YMCA; maintenance work at a youth center; helping with campus elections; and helping establish a chapter of Gamma Sigma Sigma.

## White House Recognition Follows Greeting

Curtbert Burton, president of Rho Epsilon, Savannah State College, Savannah, Georgia, received a letter of thanks from Harry S. Dent, special counsel to the President, following a greeting to service men serving in Vietnam. The greeting included the following poem entitled "These Be Your Gifts for Christmas":

These be your gifts at Christmas  
Gifts that your heart shall know  
Stars that arrow the darkness  
The wonder and silence of snow,  
The moon, holding hope in its  
crescent  
Hilltops brave with a song

Valleys of healing contentment  
A friend-strewn path that is long  
Companioned by him in evening  
His love redeeming the earth  
An old, sweet song in the  
chimney  
Your breast cradling his birth  
Ame's refuge from storm and  
confusion  
Joy only a child can bestow  
These be your gifts for Christmas  
Gifts that your heart shall know.

In the letter from the White House, Dent said, "Your thoughtful message means a great deal to the President and to all of America's fighting men in Vietnam, and you have their deep appreciation.

"With the President's best wishes to you and to all the members of Rho Epsilon Chapter of Alpha Phi Omega National Service Fraternity."

## Make up More than 4,500 I.D. Cards



A few brothers of Epsilon Zeta go through some of the final production steps when the chapter photographed and made up new I.D. cards for the student body at Rensselaer Polytechnic Institute. All together the 35 brothers spent 725 service hours making up the

cards. Pictured are Steve Schoenberg (left), Wayne Ranbom, George Spagna and Marc Prisantment.

### A Bamboo Spaceship



Brothers of Beta Phi, University of Southwestern Louisiana, Lafayette, stand around their booth during an activities carnival. The carnival was to acquaint students with the different organizations on campus. The sign earned the booth the nickname "Bamboo Spaceship" since it was built with Louisiana swamp bamboo. The brothers and their vehicle . . . ? earned top prizes by being named most colorful, interesting and best all around of the booths.

### Service at Clarksville, Tenn.

Brothers of Upsilon Alpha report a variety of projects this fall.

Included in the long list were: providing marshals for homecoming parade; helping teach art classes for senior citizens; painting senior citizen community center; helping with retarded children on Saturdays; raising flag at home football games; selling school booster pennants at registration and football games; helping with registration; and helping move girls into dorms.

### Five Help Soroptimist in East St. Louis, Ill.

Five brothers of Theta Xi at Parks College, Cahokia, Ill., were the subject of a thank you letter recently received at the national office from the Soroptimist Club of East St. Louis, Ill. The letter thanked APO for the brothers' help during a Wurst Market held by the Soroptimist to benefit the Mental Health Center and Association.

### Boy Scout Troop for Mentally Retarded

In their second year as a chapter, brothers of Phi Gamma at Texas Lutheran College, Seguin, are studying the possibility of starting a Boy Scout troop for the mentally retarded and physically handicapped boys in the area. Projects last fall included helping freshmen women move into their rooms and with registration. Other activities this fall were selling tickets to TLC home football games and sponsoring after game socials.

### Chi Zeta Installation



Pictured above are the men of Chi Zeta at the University of Tennessee, Martin, following installation by the brothers of Xi Omega, Murray State University, Ky.

### Escorts for Coeds

Associated Press distributed a national story on Iota Mu brothers who are providing escort services to coeds at the University of South Carolina, Columbia. The story said the brothers were prompted to doing the project following two recent rapes and an attempted rape in the vicinity. The brothers make two trips a night between residence halls at the edge of the downtown campus, the library and other campus buildings at 6:30 p.m. and 11 p.m.

### Theta Joins to Set Up Community Switchboard

Members of Theta chapter at the University of Virginia, Charlottesville, have joined the Charlottesville-Albemarle Mental Health Association Board to set up a community switchboard in the city. The switchboard, according to an article in the local newspaper, is a telephone service created to pro-

*(Continued on next page)*

# action...

vide young people in the community and the university with a source to answer their questions or help solve problems. Listeners to man the phones will be volunteers including brothers of Theta. If the caller seems to need specific advice he is referred to appropriate professional or reliable sources. The switchboard is not designed to provide legal or medical advice or other professional or technical answers to questions but will suggest community sources.

## Grass . . . Sod, That Is



Members of Eta Kappa at Stout State University, Menomonie, Wis., review landscaping plans for a large area they are redoing surrounding a university hall. Ground was leveled and sod put down. Chapter members volunteered for the project racking up 500 man-

hours of service before it was completed. Robert Dorabiala and William J. Reiman, president, look at blue prints.

## Region IX Leadership Conference



Leaders of the Region IX Leadership Conference included Ed Elworthy, advisor to Eta Lambda (left); Gene Lake, national office; Malcolm N. Dana, chairman of Section 27; "Sam" Tessen, conference chairman; and Bruce Galde, conference vice chairman. The conference was held in October and attended by 75 brothers from Mu Rho, Upper Iowa University; Nu Pi, Mankato State College, Minn.; Omicron, University of Iowa; Mu Theta, Luther College, Iowa; Lambda Sigma, Wisconsin State University, Stevens Point; Eta Kappa, Stout State University, Menomonie; Xi Beta, Kearney State College, Nebr.; Pi Lambda, University of Wisconsin, Green Bay; and Pi Beta, University of Dubuque, Iowa.

## Service Projects at Delta Rho

Service projects for last semester at Rutgers State University, New

Brunswick, N. J., included the sponsoring of two movies, "Cotton comes to Harlem" and the "Odd Couple," with proceeds donated to the campus chest; a record sale, and pledge work at two-day camps. Work during the coming semester will be: maintenance of a ride board, sponsorship of a rock concert; distribution of student center information booklets; running errands for students in the infirmary; Big Brother or tutor work with local youngsters; and providing swimming instruction for underprivileged kids in conjunction with Boy Scouts.

## Phi Beta Decorates Football Field



Homecoming decorations at the University of Dubuque, Iowa, were done by brothers of Pi Beta. Using "Togetherness as a Way of Life" as the theme, Phi Beta Alumni-Historian Scott Quackenbush said chapter members believe that the three cardinal principles of APO are the best formula to achieve this goal. Other decorations included several eight-foot displays indicating peace and a large peace symbol in the center of the field.

Other chapter projects for last

semester included putting up new roof supports and steps at a local Boy Scout council cabin; ushering at the inauguration of the school's new president; and sanding desks.

### Xi Zeta Helps Send Three to Deaf Winter Olympic Games



Gerald Waterman (left), president of Xi Zeta, Rochester Institute of Technology presents a \$100 check to Ronald Borne who is one of three students which competed in the 1971 Deaf Winter Olympic Games in Switzerland. The contribution helped to tip the financial scales to send the three who are students at the Institute's National Technical Institute for the Deaf.

### Con '70

*(Continued from page 4)*

The Convention featured a lively legislative session. Delegates acclaimed Dr. Glen T. Nygreen who presided over the session as National President. The National By-Laws were amended to add a New Section on Alumni, and a provision to provide for the payment of a \$5 fee for registering Honorary chapter members.

### Support Band at Pro Game



Those 17 guys carrying props onto the field at half-time activities during a New Orleans Saints' game were members of Gamma Tau from Louisiana Tech, Ruston. The brothers spent a weekend in the old town to support the school's band who provided the program. Joseph Higginbotham, president of Gamma Tau, is shown with Jim Nabors after he gave him a bulldog pin, a replica of Tech's mascot.

The most important change in the By-Laws was the adoption of a provision for the election of Sectional Chairmen by the vote of a majority of the chapters in the Section.

The Convention defeated proposals to admit women to membership, retained the present By-Law governing Housing, and turned down all other proposals to amend the present By-Laws.

The delegates voted to select Denver as the site for the 1972 Convention.

For the first time in Convention history, several Service Projects were conducted while the gather-

### 70 Brothers and Guests Attend Sectional Outing



A fall outing sponsored by Section 92 was well attended by members and guests of five chapters including Sigma Eta, Villanova; Omicron Upsilon, West Chester; Mu Eta, Albright; Lambda Upsilon, Ursinus; and Zeta Theta, Drexel. Following an afternoon of competitive games, Omicron Upsilon walked off with the honors for over-all best performance.

ing was in session. Two projects endorsed as National Service Projects were Support of the Peace Corps and Architectural Barriers. In addition, the chapters endorsed five other projects. These included Project SHOP, Recycling for Ecology, National Genetics Foundation, Big Brother/Sister and Aiding Pakistani Relief Victims.

Guest speakers were Joseph H. Blatchford, Director of the Peace Corps; Dr. W. Walter Menninger, Menninger Foundation and Charles E. Means, Scout Executive, Philadelphia, Pa. The closing banquet address was delivered by Dr. H. Roe Bartle.



## 1969-70 CHAPTER HONOR ROLL

The great strength and value of Alpha Phi Omega lies in the gift of unselfish service by each brother to those in need on his campus and in his community.

It is our responsibility to further extend our helping hand and enable as many as possible to enjoy the benefits of our fraternity.

We pause to honor those chapters which recorded the largest number of new brothers last year. Congratulations to them for this outstanding contribution to a growing fraternity.

*Douglas M. Harris*  
*National Extension Chairman*

### 10,000 PLUS STUDENTS

Alpha Rho	<i>University of Texas</i>
Beta Sigma	<i>Texas Tech University</i>
Theta Tau	<i>University of Texas—Arlington</i>
Beta Rho	<i>University of Arkansas</i>
Xi Delta	<i>Texas A. &amp; M.</i>
Phi	<i>Syracuse University</i>
Zeta Delta	<i>Miami University</i>
Kappa Omicron	<i>University of Massachusetts</i>
Eta	<i>Northern Illinois University</i>
Delta Omega	<i>University of Houston</i>
Alpha Kappa	<i>University of Southern California</i>
Alpha Alpha	<i>University of Illinois</i>
Beta Lambda	<i>Indiana State University</i>

### 5,000 TO 10,000 STUDENTS

Beta Omicron	<i>University of Missouri—Rolla</i>
Zeta Alpha	<i>Bradley University</i>
Nu Sigma	<i>Stephen F. Austin</i>
Sigma Epsilon	<i>El Centro Junior College</i>
Zeta Beta	<i>Virginia Polytechnic Institute</i>
Beta Mu	<i>Southwest Missouri State</i>
Sigma Eta	<i>Villanova University</i>
Upsilon Eta	<i>University of Texas—El Paso</i>
Lambda Iota	<i>New Mexico State University</i>
Tau Beta	<i>Appalachian State</i>
Mu Phi	<i>Fort Hays State</i>
Zeta Phi	<i>Howard University</i>
Beta Delta	<i>East Texas State University</i>

### 2,000 TO 5,000 STUDENTS

Tau Eta	<i>SUNY A. &amp; T.—Cobleskill</i>
Upsilon Gamma	<i>Lake Michigan College</i>
Tau Psi	<i>Middlesex County College</i>
Tau Omicron	<i>Purdue University—Indianapolis</i>
Iota Tau	<i>St. Olaf College</i>
Pi Gamma	<i>Baldwin-Wallace College</i>
Xi Nu	<i>Texas Wesleyan</i>
Epsilon Eta	<i>West Georgia College</i>
Omicron Phi	<i>University of Richmond</i>
Upsilon Omega	<i>Tarrant County J. C.</i>
Tau Zeta	<i>Texas Southern University</i>
Tau Upsilon	<i>Wisconsin State University—Platteville</i>
Nu Omicron	<i>Troy State College</i>

### LESS THAN 2,000 STUDENTS

Tau Phi	<i>Wingate College</i>
Xi Sigma	<i>Carson-Newman College</i>
Omicron Epsilon	<i>Union College</i>
Tau Sigma	<i>Brandywine J. C.</i>
Kappa Kappa	<i>Western New Mexico</i>
Nu Lambda	<i>Moravian College</i>
Iota Omicron	<i>Gettysburg College</i>
Pi Beta	<i>University of Dubuque</i>
Lambda Tau	<i>Salem College</i>
Upsilon Nu	<i>U.N.C.—Wilmington</i>
Omicron Lambda	<i>St. Joseph's—Calumet</i>
Rho Alpha	<i>Paul Smith's College</i>
Sigma Theta	<i>St. Mary's—Winona</i>