



torch and trefoil



WINTER, 1979

ALL REGIONS TO MEET

Would you like a chance to experience fellowship with members from other Alpha Phi Omega Chapters? Would you be interested in meeting the National President and other Fraternity leaders? Would you like to learn methods of operating your chapter better? How about participating in a Leadership Development Workshop? All of these opportunities, and many more, are available at the Regional meetings being planned by every Region of Alpha Phi Omega.

Leading off the Regional meeting schedule is Region IX, which will convene at the Leamington Hotel in Minneapolis, Minnesota on November 8-10. Regional Representative Mike Suhr promises a fine program. A variety of programs on chapter operations will be offered, and a Leadership Development Workshop will be conducted by Howard R. Patton, to whom the Fall Pledge Class is dedicated. Special guests will include Lorin A. Jurvis, National President, Sid Smith, National Membership and Extension Committee Chairman, and Roger A. Sherwood, National Executive Director. Fred Thomson, Jr. of Iota Tau Chapter, St. Olaf College, is the Conference Chairman.

The following weekend, November 16-18, nearly 500 members are expected to assemble at Texas Lutheran College in Seguin, Texas for the Region VII meeting. Abe Frishman, Region VII Representative, claims that this will be the second largest meeting in Alpha Phi Omega, surpassed only by the National Convention. The program features seven seminars covering a variety of Alpha Phi Omega topics. Brothers Jurvis and Sherwood will again be on hand, and will be joined by Dr. C. P. Zlatkovich, National Vice President. Bill Shupe of Phi Gamma Chapter, Texas Lutheran College, is serving as Conference Coordinator.

Regions V and VI, under the leadership of Region V Representative Bill Rugh and Region VI Representative Berkeley P. Duncan, will meet over Thanksgiving weekend, on November 21-22 at the University of Michigan in Ann Arbor, Michigan. The Regional Conference Committee has been hard at work since last Spring preparing for the meeting, which will feature chapter officers workshops. A Leadership Development Seminar, led by Howard R. Patton will be offered. Brothers Jurvis, Zlatkovich and Sherwood will be in attendance. The Conference Chairman is Mike Wheelock of Gamma Pi Chapter, University of Michigan.

Zeta Beta Chapter at Virginia Polytechnic Institute and State University in Blacksburg, Virginia will host the Region III meeting on November 30-December 2. Seminars on chapter operations will be offered. A Leadership Development Workshop will be led by Howard R. Patton. Region III Representative Bob Harris is anticipating a good turnout. Special guests will include Brothers Jurvis and Sherwood

and LTC Lucius E. Young, Past National President. Mark Eisenhower of Zeta Beta is the Conference Chairman.

Region IV delegates will gather at the Hilton Inn in Birmingham, Alabama on December 21-22 for their Regional meeting. It will be co-hosted by Gamma Chi Chapter, Samford University, and Nu Xi Chapter at Birmingham-Southern College. Region IV Representative Wendell Wainwright reports that the meeting will include seminars on chapter operations and a Leadership Development Workshop led by Fred Pollack of the Leadership Development Committee. Dr. C. P. Zlatkovich will be the featured speaker at the Conference. Claire Caldwell of Nu Xi is the Conference Chairman.

On December 27-29 three Regional meetings will be running concurrently in diverse parts of the country. Regions I and II will meet at the Playboy Hotel in Great Gorge, New Jersey. In an effort to develop more people to provide leadership training in the Fraternity, Region I Representative Ed Andrews and Region II Representative Warren Weidman are planning a special "Train the Trainers" Leadership Development Workshop, to be led by Howard R. Patton. In addition, the Conference will include a variety of workshops to improve chapter operations. National Alumni Chairman Lew Finkel, Past National President E. Ross Forman, and Director of Membership Services Fred Heismeyer will be in attendance. Several chapters in both Regions are coordinating the arrangements.

Gamma Theta Chapter at the University of Colorado in Boulder, Colorado will host the Region VIII meeting on December 27-29. Region VIII Representative Darrell Spoon will head the meeting, which will include a special seminar on motivation as well as several sessions to help chapters improve their operations. To take advantage of Colorado's great skiing, Gamma Theta is planning a post-Conference ski trip. Brothers Jurvis and Sherwood and Clark Israel, National Leadership Development Chairman, will be in attendance. Colleen Donnelly of Gamma Theta is serving as Conference Chairman.

Reno, Nevada will be the site of the Region X meeting, to be hosted by Upsilon Psi Chapter of the University of Nevada-Reno on December 27-29. Earle Herbert, Region X Representative, reports that the Conference will include workshops for personal and chapter development and emphasize the Chapter Program Planning Conference. There will also be a session for those students interested in working on the 1980 National Convention. Brothers Jurvis and Smith and Irwin Gerst, Life Member of the National Board of Directors, will be in attendance. The Conference Chairman is Lynette Martinelli of Upsilon Psi.

torch and trefoil

Alpha Phi Omega National Service Fraternity

Volume 55, No. 2
Winter, 1979

National Officers

Lorin A. Jurvis Washington, DC
National President
Dr. C. P. Zlatkovich Bryan, TX
National Vice President

Members-at-Large

Dr. Stan Carpenter Monticello, AR
Lewis Finkel New York, NY
Dr. John E. Hanke Cheney, WA
Clark Israel Kansas City, KS
Sid Smith Belvedere, CA

Regional Representatives

I. Ed M. Andrews Orono, ME
II. Warren C. Weidman Reading, PA
III. Robert J. Harris Raleigh, NC
IV. Wendell Wainwright Memphis, TN
V. William B. Rugh Toledo, OH
VI. Berkeley P. Duncan Ann Arbor, MI
VII. Abe Frishman Carrollton, TX
VIII. Darrell Spoon Wellington, KS
IX. Michael W. Suhr Minneapolis, MN
X. Earle M. Herbert Los Angeles, CA

National Executive Director

Roger A. Sherwood, CAE Kansas City, MO

Legal Counsel

Alex M. Lewandowski Kansas City, MO

Past Presidents

M. R. Disborough Wilmington, DE
E. Ross Forman Philadelphia, PA
Tom T. Galt, M.D. Spartanburg, SC
Lawrence L. Hirsch, M.D. Chicago, IL
Dean Arno Nowotny Austin, TX
Dr. Glen T. Nygreen Bronx, NY
William S. Roth Birmingham, AL
Dr. Lester R. Steig Palo Alto, CA
Lucius E. Young, LTC, Ret. Washington, DC

Life Members

George F. Cahill, CAE Pittsburgh, PA
Irwin H. Gerst Palos Verdes Peninsula, CA
Sidney B. North Lee's Summit, MO
Dr. Harold F. Pote LaJolla, CA
Joseph Scanlon Kansas City, MO
A. G. Spizzirri Louisville, KY

Founding Life Members

Lewis B. Blair Cheverly, MD
Ellsworth S. Dobson Collbran, CO
Herbert Heinrich Honolulu, HI
Donald L. Terwilliger Englewood, FL
William T. Wood Hockessin, DE

Ex-Officio Members

Downing B. Jenks St. Louis, MO
James L. Tarr Dallas, TX

TORCH AND TREFOIL (USPS 633-960) is issued regularly four times a year, September, November, February and April, from Office of Publication, 1100 Waltower Building, 823 Walnut Street, Kansas City, Missouri 64106. Printed by Rosse Lithographing Company, Printers and Lithographers, Kansas City, Missouri. Second Class Postage paid at Kansas City, Missouri. Subscription price \$1.50 per year.

CONTENTS

All Regions to Meet	1
Quantity and Quality	2
Your National Office	3
Report of the National Finance Chairman	4
Report of the National Endowment Fund Board of Trustees	5
Installations	6
Brothers on the Move	6
1979-80 Meeting Schedule	6
Action	6
Chapter Anniversaries in 1980	8

QUANTITY AND QUALITY

From time to time all organizations discuss their membership and, when they do, frequently the merits of quantity and quality are debated as if the two are mutually exclusive and incompatible. Alpha Phi Omega is no exception, and this question is frequently addressed by chapters.

The record of the most successful chapters over long periods of time indicates quantity membership and quality membership go hand in hand. Alpha Phi Omega has never lost a chapter because of too many members, but many chapters, once highly successful, have fallen by the wayside because of artificial membership restrictions based mostly on alleged standards for the choice of individuals of quality.

Membership in our Fraternity is earned, not granted on preconceived notions of how good an individual is or probably will be. Many a chapter has helped persons discover the best in themselves while engaged in service to others. The enduring chapters are those with sufficient membership to undertake useful projects, meaningful to campus and community, and to the members conducting them.

We must have quantity in membership and quality in program if Alpha Phi Omega is to continue challenging the best students to engage in service to others. Chapters which do not share membership widely across campus frequently find themselves frustrated by the seeming indifference of the university community. Alpha Phi Omega cannot be understood where it is unknown.

Fifty-four years of solid achievement and growth bear witness to the need for quantity membership and quality program.

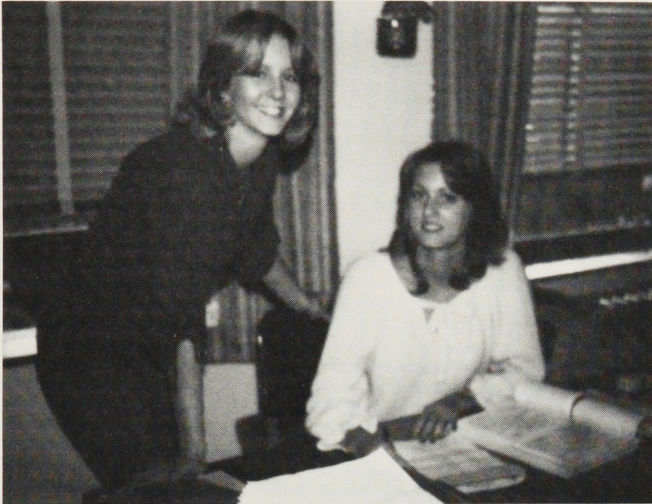
Attention Philmont/Philtarn Staffers

The Philmont Staff Association is actively searching for former staff members. If you have ever served on the Philmont or Philtarn staffs then the association wants you! You could be that "lost" member of a summer staff that everyone's looking for. For more information write: Philmont Staff Association, P. O. Box 53, Westerville, OH 43081.

YOUR NATIONAL OFFICE

Have you ever wondered just what goes on at the National Office? Most of us, during our pledge period, learn that 1100 Waltower Building is the address of the National Headquarters of the Fraternity. Those few who visit the National Office are sometimes surprised that the Fraternity does not own the mystical Waltower Building, but instead occupies 1,840 square feet of rented space on the 11th floor.

In order to familiarize you with the people who make things happen at the National Office, we'd like to familiarize you with the operations and the people behind them.



Penney McGill (L) and Debi Moore

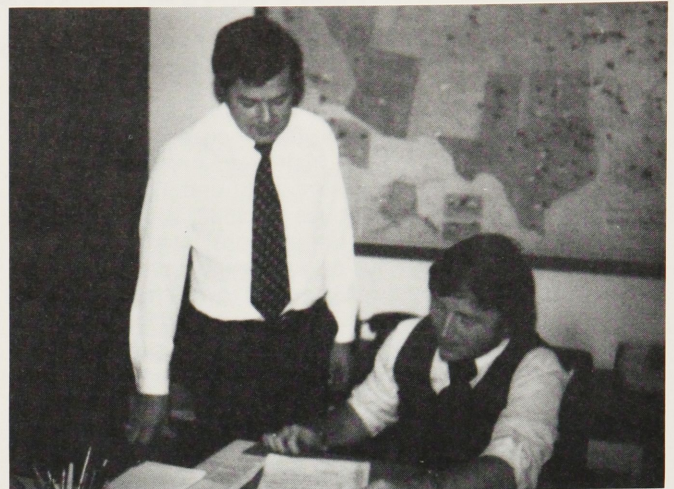
The staff consists of seven employees — two full time professional, four full time clerical, and one part-time clerical. All operations are under the direction of Roger A. Sherwood, National Executive Director.

Fred C. Heismeyer, Director of Membership Services, is in charge of the Fraternity's extension program. He coordinates the "Reach Out" reactivation program and all new chapter possibilities. He communicates extensively with volunteers and students interested in forming new chapters and reactivating inactive ones. He provides assistance to new chapters, to chapters with problems, and travels frequently to Sectional Conferences.

Jan Church handles all of the incoming mail for the Fraternity. She disperses it to the proper employee, records all income, maintains records on chapter membership registration, chapter presidents and advisory chairmen and chapter addresses, and communicates with chapters on financial matters. Last year she handled nearly \$200,000 in income received by the Fraternity.



Linda Baker



Roger Sherwood (L) and Fred Heismeyer

Linda Baker serves as receptionist and secretary to the Executive Director. She coordinates mailings to volunteers, maintains chapter correspondence files, and works closely with the Director in a variety of areas.



Jan Church (L) and Kim Niswanger

Debi Moore is the Fraternity's registrar. Her duties include processing all membership applications, maintaining chapter membership files, and working with chapters to resolve membership registration problems. She compares chapter rosters against membership records in the National Office and oversees the registration area.

Penney McGill serves as secretary to the Director of Membership Services and data processing clerk. She is responsible for maintaining updated addresses on undergraduates, alumni, advisors and chapters, and recording alumni donations.

Kim Niswanger is the part-time mail clerk. She processes all orders for supplies and is responsible for the mailings of the National Office.

This staff is what makes the National Office run. In an average year, 4,000 new members are registered, monthly bulletins are sent to all chapters, all Fraternity publications are updated and printed, an alumni support program is conducted, the supplies necessary to run the National Office are purchased and utilized, and hundreds of communications are sent to chapters and members. It's a busy operation, and the staff works hard to provide service to the membership.

REPORT OF THE NATIONAL FINANCE CHAIRMAN

by Dr. John E. Hanke

The 1978-79 fiscal year was successful. We operated under a budget that indicated total expenses would exceed total revenues by \$4,185. This included a projected transfer to \$3,315 from our Field Representative Fund. Total expenses actually exceeded total revenues by \$562. We finished the year \$3,623 better than we originally projected.

In comparison with our original expectations, our revenues were approximately 3.8 percent lower than expected, while expenses were approximately 5.3 percent below the anticipated level. All major revenue categories except 1978 National Convention and interest were below our projections. Most expenditure categories were also below projections. The Executive Director and staff deserve our sincere appreciation for cutting expenses during inflationary times while still providing an extremely high level of service to the membership.

Alpha Phi Omega operates on a budget system where the Finance Chairman and the Executive Director, in consultation with other officers and members, develop a proposed budget in June for consideration by the Board of Directors at the summer meeting. The Board makes any modifications deemed necessary and adopts a budget for the year which guides the financial activities of the Fraternity. From August of 1974 to August of 1978 we were fortunate to produce a surplus of \$36,119. At the 1978 summer meeting the Board decided to allocate \$22,562 of this surplus to the funding of a "Director of Membership Services." We only had to draw on \$562 this year.

At the summer Board meeting this year, the Board adopted a budget for the coming year which calls for an excess of expenses over revenues of \$9,500. This deficit is well within the \$22,562 that was set aside to expand our professional staff. The Board recognizes that this deficit budget involves an element of risk, but we feel that the benefits in future growth and development of the Fraternity will produce returns beyond the capital ventured. A final decision on this program will be made after a complete evaluation at the end of this fiscal year. The Board also decided to change the budgeting approach for the Development Campaign. This change shows up as a transfer of \$16,000 from the General Fund to the Development Campaign. In the past we budgeted what we hoped to solicit. Because of the Fraternity's improved financial position, the Board thought it prudent to only budget the actual revenue accrued in the campaign from the previous year. This will allow us maximum flexibility in the im-

plementation of the Development Campaign.

The continued fiscal health of Alpha Phi Omega is dependent upon several factors. New members are the lifeblood of the Fraternity — after adjusting out the 1978 National Convention, about 53 percent of our income came from people new to Alpha Phi Omega last year. Another 15 percent of our revenue was provided by alumni. Both of these areas experienced a decrease from the previous year. Since we cannot continue to cut expenses without affecting service, we need to improve our revenue picture. This will require the combined efforts and judgement of each of us in order to promote Alpha Phi Omega to the maximum.

ALPHA PHI OMEGA BALANCE SHEET, August 31, 1979	
ASSETS	
General Fund:	
Cash	\$ 6,687
Treasury Bill and Treasury Bonds	17,000
Accounts receivable	4,194
Inventories:	
Merchandise for sale, at the lower of cost (first-in, first-out) or market	\$ 11,209
Printed materials and supplies, at cost (not intended to be sold)	7,441
	18,650
Furniture and equipment (Note 1b)	22,111
Less accumulated depreciation	(16,422)
	5,689
Total assets - General Fund	\$52,220
Development Campaign Fund:	
Cash	\$16,000
Special Project Fund:	
Cash	\$ 1,272
LIABILITIES AND FUND BALANCE	
General Fund:	
Payable to local chapters	\$ 6,251
Payable to Endowment Fund	2,240
Payroll taxes and salary deductions	1,606
Retirement reserve	4,398
Fund balance	37,725
Total liabilities and fund balance - General Fund	\$52,220
Development Campaign Fund:	
Fund balance	\$16,000
Special Project Fund:	
Fund balance	\$ 1,272

STATEMENT OF CHANGES IN FUND BALANCES

August 31, 1979

	Total	General Fund	Special Project Fund	Field Representative Fund	Development Campaign Fund
Fund balance at September 1, 1978	\$ 57,922	\$ 54,287	\$ -	\$ 3,635	\$ -
Revenue collected	192,508	191,236	1,272	-	-
Expenses paid	(195,433)	(195,433)	-	-	-
Transfer from Field Representative Fund to General Fund	-	3,635	-	(3,635)	-
Transfer from General Fund to Development Campaign Fund	-	(16,000)	-	-	16,000
Fund balance at August 31, 1979	\$ 54,997	\$ 37,725	\$1,272	\$ -	\$16,000

GENERAL FUND
STATEMENT OF REVENUE COLLECTED AND EXPENSES PAID
for the year ended August 31, 1979

	Actual	Budget	Actual Over (Under) Budget
Revenue collected:			
Initiation fees	\$ 57,757	\$ 60,750	\$ (2,993)
Pledge fees	23,175	25,000	(1,825)
Annual active membership dues	18,219	20,000	(1,781)
Royalties	718	1,000	(282)
1978 National Convention	37,632	36,400	1,232
Development campaign contributions	22,780	25,000	(2,220)
Sale of jewelry and supplies	15,188	20,000	(4,812)
Endowment Fund reimbursement for:			
Life Member Services	8,418	7,000	1,418
Life Membership Sales Campaigns	1,109	1,500	(391)
Charter fees	560	525	35
Interest	3,191	650	2,541
Group insurance program	674	1,000	(326)
Other revenues	1,815	-	1,815
Total revenue collected before interfund transfers	191,236	198,825	(7,589)
Expenses paid:			
Salaries	65,123	68,850	(3,727)
Retirement	2,504	2,550	(46)
Hospitalization insurance	3,330	3,600	(270)
Social security taxes	3,552	3,800	(248)
Printing	8,639	9,000	(361)
Telephone	4,915	5,000	(85)
Postage	6,370	7,000	(630)
Rent	7,224	7,350	(126)
Auditing and accounting	2,955	3,200	(245)
Office supplies	3,215	3,400	(185)
Disability insurance	418	425	(7)
Data processing	2,911	3,400	(489)
Equipment maintenance	1,942	1,500	442
Insurance	1,793	1,500	293
Chapter visitation, staff	10,307	11,700	(1,393)
Torch and Trefoil	9,641	8,000	1,641
Certificates, charters and awards	1,745	1,800	(55)
Alumni services	807	1,000	(193)
Expenses paid, continued:			
President, Executive Committee and Directors	\$ 336	\$ 500	\$ (164)
1978 National Convention	32,020	36,400	(4,380)
Purchase of jewelry and supplies	10,681	12,750	(2,069)
Development Campaign expense	11,324	10,000	1,324
Bad debts	1,011	-	1,011
Life Membership Sales Campaign	1,109	1,500	(391)
Miscellaneous expenses	861	1,400	(539)
Depreciation	700	700	-
Total expenses paid	195,433	206,325	(10,892)
Excess of expenses paid over revenue collected before interfund transfers	(4,197)	(7,500)	3,303
Transfer from Field Representative Fund to General Fund	3,635	3,315	320
Transfer from General Fund to Development Campaign Fund	(16,000)	(16,000)	-
Excess of expenses paid over revenue collected after interfund transfers	\$(16,562)	\$(20,185)	\$ 3,623

REPORT OF THE NATIONAL ENDOWMENT FUND BOARD OF TRUSTEES

by George F. Cahill, Chairman

Editors Note: The Trust Agreement drawn between the Endowment Trustees and National Board of Directors requires an annual report to the National Finance Chairman of Alpha Phi Omega. The following comments are excerpts from a letter from George F. Cahill, Chairman of the National Endowment Fund Board of Trustees to Dr. John E. Hanke, National Finance Chairman.

The Alpha Phi Omega Endowment Fund was established in 1948 by the Alpha Phi Omega Executive Board. The Fraternity was recovering from the almost destructive effect of decreased college enrollment during World War II.

As the wave of G.I.'s hit the campuses of America, many joined Alpha Phi Omega. The increased membership relieved the financial pressures that had almost buried the

Fraternity. The National Board started searching for a source of funds which could be placed in reserve, added to and compounded and which could constantly increase in size. The Board's objective was to establish a reserve to assist Alpha Phi Omega through future times of adversity. This was the motivation for the creation of Alpha Phi Omega's Endowment Fund.

Life Membership in Alpha Phi Omega was new in those days. Two hundred and fifty Brothers had become Life Members by 1946. The Board perceived the Life Membership fee as a continuing source of funds which could be deposited to the Endowment Fund. The National Convention of our Fraternity decided that Life Membership fees should be directed into the Endowment Fund. No Convention or Board action since that time has ever interrupted this policy.

By August 31, 1979, nearly 7,500 Brothers had become Life Members. Their fees have been deposited to the Endowment Fund. Over the years, a few members have made special contributions and some have left bequests to Alpha Phi Omega. Most of these bequests and gifts have been added to the Endowment Fund.

These three decades of Life Membership are capsuled in the audit report of August 31, 1979. At the close of the fiscal year the Endowment Fund had a Fund Balance of \$203,630. That represents an improvement of \$15,000, or 8% over the audit report of August 31, 1978.

The investment policy of the Endowment Fund is determined by the Trustees. Investment counsel is retained to oversee the day-to-day operations of the Fund. A cash account is maintained with a minimum balance of \$10,000, invested in commercial paper for maximum income. The latest report from investment counsel showed that 44% of the Fund is invested in fixed income assets, 37% is in equities and 19% is in liquid accounts.

The Endowment Fund has met the objective for which it was originally established. The past year has evidenced the wisdom of the Trustees and Board in engaging professional management. Alpha Phi Omega can take comfort in knowing that our Life Members have made possible this fund for the perpetuation of our ideals.

ALPHA PHI OMEGA ENDOWMENT FUND
BALANCE SHEET, August 31, 1979

Cash	\$ 3,483
Note receivable from Alpha Phi Omega	2,240
Securities, at cost (quoted market \$193,915)	197,907
	<u>\$203,630</u>
Fund balance	<u>\$203,630</u>

STATEMENT OF REVENUE COLLECTED AND EXPENSES
for the year ended August 31, 1979

Revenue collected:	
Life Membership	\$12,530
Dividend and interest income	14,474
Total revenue	<u>27,004</u>
Expenses:	
Transfer of funds to Alpha Phi Omega for operating expenses	9,527
Loss on sale of investments	937
Management services - Investment Counsel	1,027
Management services - Custodial Fees	519
Total expenses	<u>12,010</u>
Excess of revenue collected over expenses	<u>\$14,994</u>

STATEMENT OF CHANGES IN FUND BALANCE
August 31, 1979

Fund balance at September 1, 1978	\$185,836
Restatement for note receivable from Alpha Phi Omega	2,800
Restated fund balance at September 1, 1978	188,636
Revenue	27,004
Expenses	<u>(12,010)</u>
Fund balance at August 31, 1979	<u>\$203,630</u>

INSTALLATIONS

RHO CHI GANNON COLLEGE



Rho Chi Chapter at Gannon College in Erie, Pennsylvania was the first reactivation recorded during the 1979-80 school year. On September 23, 1979, Chi Sigma Chapter at Allegheny College performed the ritual ceremony for the 28 members and 5 advisors of the reactivated chapter. William B. Rugh, Region V Representative, officiated at the reactivation. He was assisted by Leland Foland, Section 63 Chairman. Raymond J. Frey serves as Chapter President and Reverend Charles Drexler is the Advisory Chairman.

BROTHERS ON THE MOVE

James W. McLernon, an alumnus of Epsilon Sigma Chapter, State University of New York at Buffalo, is President and Chief Executive Officer of Volkswagon of America.

Michelle Marti, an alumnus of Xi Delta, Texas A&M, received one of two Brown-Earl Rudder Awards in May. The awards, which include a plaque and \$5,000, are presented to Texas A&M's top two students. She is currently attending the University of Texas Law School.

Dr. Robert Crouch, an alumnus of Delta Psi Chapter, Eastern Illinois University, is the new President of Rutledge College in Spartanburg, South Carolina.

William Mitchell, an alumnus of Eta Chapter, Northern Illinois University, was recently elected President of the Northern Illinois University Alumni Association.

Eugene Vickery, M.D., an alumnus of Sigma Chapter, Northwestern University, is serving as President of the Illinois Academy of Family Physicians.

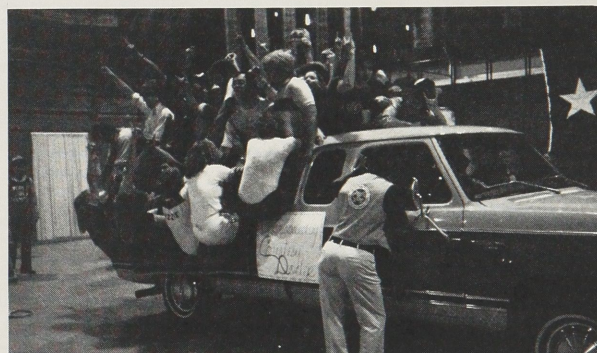
Action...

• ZETA DELTA — MIAMI UNIVERSITY

At the University's "Little Sib's Weekend" ZETA DELTA CHAPTER, MIAMI UNIVERSITY (OHIO) was heavily involved in working with the 27 bus loads of younger brothers and sisters of Miami students who converged on the campus. The chapter delivered luggage to the dorms for the visitors, assisted with a concert, and staffed a celebrity pie booth at a campus carnival. The booth featured professors and administrators as the recipients of the thrown pies, and the Kidney Foundation as the beneficiary of the funds raised. You can contact Zeta Delta at 237 University Center, Miami University, Oxford, Ohio 45056

• ALPHA RHO — UNIVERSITY OF TEXAS

Entering the record book last Spring was ALPHA RHO, UNIVERSITY OF TEXAS. The chapter set up and worked at the First Annual Multiple Sclerosis Record Breaker on the campus. Alpha Rho will enter *Tomlinson's Book of Texas Records*, and possibly the *Guinness Book of World Records*, for stuffing 76 people into a pickup truck at the event. More than \$5,000 in pledges were received at this exciting project. Among the 19 records broken — skateboarding 3.45 miles while doing a handstand; twelve women in a phone booth; 21,265 consecutive yo-yo loops, and radio broadcasting underwater for 12 hours. You can write to Alpha Rho at University of Texas, Box 101 Texas Union, Student Activities Center, Austin, Texas 78712.



76 Alpha Rho members in their pickup stuffing record try.

1979-80 MEETING SCHEDULE

At the time of publication the following meetings have been scheduled:

Date	Meeting	Location
Nov. 9-11	Sections 88-89 (Upstate New York)	Rensselaer Polytechnic Institute
Nov. 9-11	Region IX	Minneapolis, Minnesota
Nov. 10-11	Section 2 (Arizona, Southern California)	University of Arizona
Nov. 16-18	Region VII	Texas Lutheran College
Nov. 17	Section 99 (New Jersey)	Westminster Choir College
Nov. 23-24	Regions V-VI	University of Michigan
Nov. 30- Dec. 2	Region III	Virginia Polytechnic Institute & State University
Dec. 21-22	Region IV	Birmingham, Alabama
Dec. 27-29	Regions I-II	Great Gorge, New Jersey
Dec. 27-29	Region VIII	University of Colorado
Dec. 27-29	Region X	University of Nevada-Reno
Feb. 8-10	National Board of Directors	Los Angeles, California
Feb. 15-17	Section 40 (West Texas, New Mexico)	Angelo State University
Feb. 22-24	Section 95 (New England)	Maine Maritime Academy
Feb. 23	Section 92 (Southeastern Pennsylvania, Delaware)	University of Delaware
Apr. 18-20	Section 42 (East Texas)	University of Texas
Dec. 27-29	National Convention	Los Angeles, California

Action...

• DELTA BETA — UNIVERSITY OF OKLAHOMA

A good fund raising project conducted this Fall by DELTA BETA, UNIVERSITY OF OKLAHOMA was the distribution of desk pads to the OU students. The chapter reports that it spent 100 hours on the project and netted \$1,000 for the chapter service program. For more information on how Delta Beta conducts this project, write to the chapter at the University of Oklahoma, 633 Elm Avenue, Suite 306, Norman, Oklahoma 73069.

• PSI NU — BENEDICT COLLEGE

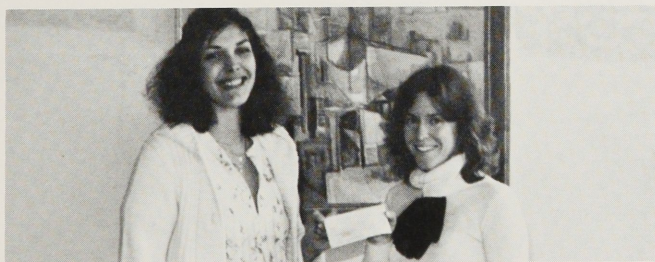
The Brothers of PSI NU, BENEDICT COLLEGE (SOUTH CAROLINA) started the Fall semester by being of service to the campus and community. They presented a program called "Operation Get Smart", which featured inmates from a local correctional institution who shared their experiences with the hope of reaching others. The inmates pleaded with the audience: "Please don't make the mistakes we made." The program, which ended with a question and answer period, was well-received. For more information write to Psi Nu at Benedict College, Basement, Stuart Hall, Columbia, South Carolina 29204.

• EPSILON IOTA — MISSISSIPPI STATE UNIVERSITY

Last Spring EPSILON IOTA, MISSISSIPPI STATE UNIVERSITY, participated in the Spring Camporee of the Pushmataha Area Council. The members ran the patrol events for 50 patrols participating from among the 500 Scouts at the Camporee. You can contact Epsilon Iota at Mississippi State University, P.O. Box 1811, State College, Mississippi 39762.

• LAMBDA RHO — AUGUSTANA COLLEGE

An Ugly Man on Campus (UMOC) contest was conducted by LAMBDA RHO, AUGUSTANA COLLEGE (ILLINOIS) late last Spring. The event raised \$1,900 for the Moline Opportunity Center for Retarded Adults and the American Heart Association. For information on how the chapter did it, write to Lambda Rho at Augustana College, Box 1134, Rock Island, Illinois 61201.

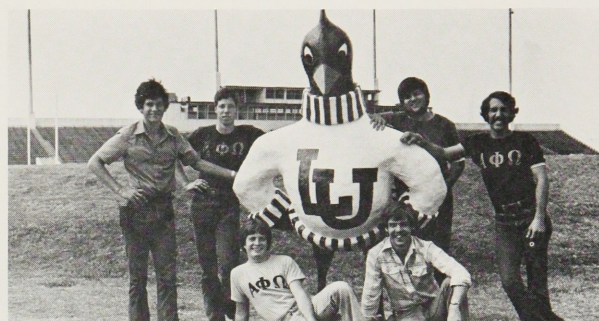


Anne Veltman (L) and Beth Hogan, Co-Chairmen of Lambda Rho's UMOC project, display a check for \$1,900 raised in the event.

*Leadership, Friendship and Service
bound by a single tie — Alpha Phi Omega.
To secure our future on campus,
remember Alpha Phi Omega in your will.*

• KAPPA ALPHA — LAMAR UNIVERSITY

On October 6, 1979, KAPPA ALPHA, LAMAR UNIVERSITY, retired the Lamar University mascot, Big Red, and presented the University with a new one, Big Red II. Rich Greig, 2nd Vice President of Kappa Alpha, turned over the original mascot to Johnny Walker, President of the Lamar University Alumni Association, and David Young, Chapter President, presented Big Red II to Dr. C. Robert Kemble, University President, who accepted on behalf of the student body. The chapter utilized fund raising efforts and chapter funds for the \$800 mascot. You can write to Kappa Alpha at Lamar University, P.O. Box 10061, Beaumont, Texas 77710.



Kappa Alpha members pose with Big Red II.

U.S. POSTAL SERVICE STATEMENT OF OWNERSHIP, MANAGEMENT AND CIRCULATION (Required by 39 U.S.C. 3685)			
1. TITLE OF PUBLICATION Torch and Trefoil		2. DATE OF FILING 9-20-79	
3. FREQUENCY OF ISSUE 4 times yearly, bi-monthly, Sept. thru April		4. ANNUAL SUBSCRIPTION PRICE \$1.50	
5. LOCATION OF HEADQUARTERS OR GENERAL BUSINESS OFFICES OF THE PUBLISHERS (Not printers) same			
6. NAMES AND COMPLETE ADDRESSES OF PUBLISHER, EDITOR, AND MANAGING EDITOR			
PUBLISHER (Name and Address) Alpha Phi Omega, 1100 Walloway Bldg., 823 Walnut St., Kansas City, MO 64106			
EDITOR (Name and Address) Roger A. Sherwood, 1100 Walloway Bldg., 823 Walnut St., Kansas City, MO 64106			
MANAGING EDITOR (Name and Address) None			
7. OWNER (If owned by a corporation, its name and address must be stated and also immediately thereunder the names and addresses of stockholders owning or holding 1 percent or more of total amount of stock. If not owned by a corporation, the names and addresses of the individual owners must be given. If owned by a partnership or other unincorporated firm, its name and address, as well as that of each individual must be given.)			
NAME		ADDRESS	
Alpha Phi Omega		1100 Walloway Bldg., 823 Walnut St. Kansas City, MO 64106	
8. KNOWN BONDHOLDERS, MORTGAGEES, AND OTHER SECURITY HOLDERS OWNING OR HOLDING 1 PERCENT OR MORE OF TOTAL AMOUNT OF BONDS, MORTGAGES OR OTHER SECURITIES (If there are none, so state)			
NAME		ADDRESS	
None			
9. FOR COMPLETION BY NONPROFIT ORGANIZATIONS AUTHORIZED TO MAIL AT SPECIAL RATES (Section 132.122, PSM) The purpose, function, and nonprofit status of this organization and the exempt status for Federal income tax purposes (Check one)			
<input checked="" type="checkbox"/> HAVE NOT CHANGED DURING PRECEDING 12 MONTHS <input type="checkbox"/> HAVE CHANGED DURING PRECEDING 12 MONTHS (If changed, publisher must submit explanation of change with this statement.)			
10. EXTENT AND NATURE OF CIRCULATION		AVERAGE NO. COPIES EACH ISSUE DURING PRECEDING 12 MONTHS	
A. TOTAL NO. COPIES PRINTED (Net Press Run)		16,000	
B. PAID CIRCULATION 1. SALES THROUGH DEALERS AND CARRIERS, STREET VENDORS AND COUNTER SALES		None	
2. MAIL SUBSCRIPTIONS		15,500	
C. TOTAL PAID CIRCULATION (Sum of 10B1 and 10B2)		15,500	
D. FREE DISTRIBUTION BY MAIL, CARRIER OR OTHER MEANS SAMPLES, COMPLIMENTARY, AND OTHER FREE COPIES		None	
E. TOTAL DISTRIBUTION (Sum of C and D)		15,500	
F. COPIES NOT DISTRIBUTED 1. OFFICE USE, LEFTOVER, UNACCOUNTED, SPOILED AFTER PRINTING		500	
2. RETURNS FROM NEWS AGENTS		None	
G. TOTAL (Sum of E, F, and 2—should equal net press run shown in A)		16,000	
11. I certify that the statements made by me above are correct and complete.		SIGNATURE AND TITLE OF EDITOR, PUBLISHER, BUSINESS MANAGER, OR OWNER Roger A. Sherwood, Executive Director	
12. FOR COMPLETION BY PUBLISHERS MAILING AT THE REGULAR RATES (Section 132.121, Postal Service Manual) 39 U.S.C. 3626 provides in pertinent part: "No person who would have been entitled to mail matter under former section 4359 of this title shall mail such matter at the rates provided under this subsection unless he files annually with the Postal Service a written request for permission to mail matter at such rates." In accordance with the provisions of this statute, I hereby request permission to mail the publication named in item 1 at the postage rate presently authorized by 39 U.S.C. 3626.			
SIGNATURE AND TITLE OF EDITOR, PUBLISHER, BUSINESS MANAGER, OR OWNER Roger A. Sherwood		EXECUTIVE DIRECTOR	



CHAPTER ANNIVERSARIES IN 1980

We recognize with pride the chapter anniversaries listed below. Collectively they represent 1,390 years of Service through Alpha Phi Omega. The entire Fraternity salutes these chapters and wishes them continued success in their mission of Leadership, Friendship and Service.



FIFTY-FIFTH ANNIVERSARY

Alpha Lafayette College

GOLDEN ANNIVERSARIES

Pi Kansas State University
Rho University of North Carolina

FORTY-FIFTH ANNIVERSARIES

Alpha Omicron Southern Methodist University
Alpha Pi University of Miami
Alpha Rho University of Texas

FORTIETH ANNIVERSARIES

Gamma Theta University of Colorado
Gamma Iota Brooklyn College
Gamma Lambda Clemson University
Gamma Nu University of Idaho
Gamma Xi Rockhurst College
Gamma Omicron Queens College
Gamma Pi University of Michigan

THIRTY-FIFTH ANNIVERSARY

Delta Epsilon Illinois Institute of Technology

THIRTIETH ANNIVERSARIES

Theta Mu Vanderbilt University
Theta Nu Hamline University
Theta Xi Parks College of St. Louis University
Theta Pi Indiana Central University
Theta Rho Sam Houston State University
Theta Sigma Oklahoma State University
Theta Tau University of Texas — Arlington
Theta Psi University of Bridgeport
Iota Alpha University of Tennessee-Knoxville
Iota Lambda North Carolina State University

SILVER ANNIVERSARIES

Lambda Nu Duke University
Lambda Xi Pan American University
Lambda Omicron West Virginia University
Lambda Rho Augustana College

TWENTIETH ANNIVERSARIES

Nu Beta Hope College
Nu Gamma Southwest Texas State University
Nu Delta Lebanon Valley College
Nu Zeta Abilene Christian University

FIFTEENTH ANNIVERSARIES

Omicron Lambda Calumet College
Omicron Nu University of Puerto Rico-Rio Piedras
Omicron Sigma St. Peter's College
Omicron Upsilon Westchester State College
Omicron Phi University of Richmond
Omicron Psi Fitchburg State College
Omicron Omega East Texas Baptist College
Pi Alpha Philander Smith College
Pi Beta University of Dubuque
Pi Delta Western Carolina University
Pi Epsilon Alabama A&M University
Pi Zeta Tuskegee Institute

TENTH ANNIVERSARIES

Phi Mu Norfolk State University
Phi Xi Austin College
Phi Pi Langston University
Phi Rho Westminster Choir College
Phi Sigma Catholic University of Puerto Rico
Phi Tau Fayetteville State University
Phi Upsilon Amarillo College
Phi Phi Florida Memorial College
Chi Gamma James Madison University
Chi Delta Pepperdine University
Chi Epsilon Richard Bland College
Chi Zeta University of Tennessee at Martin

FIFTH ANNIVERSARIES

Psi Phi Tennessee State University
Psi Chi University of South Alabama
Psi Psi University of Arkansas at Pine Bluff
Psi Omega University of Central Florida