

inside:

Leadership, Friendship  
& Service  
Accomplishments . . . . . 2-3

FY (Fiscal Year) 2002-2003  
Financial Summary . . . . . 4

Financial Statements  
& Review. . . . . 5

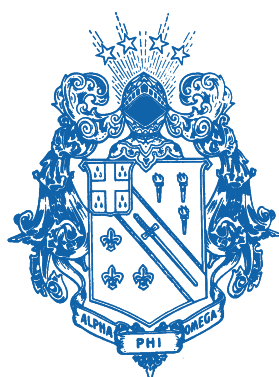
The Spirit of Giving . . . . 6-8

Appreciation of  
Volunteers . . . . . 8-9

2003 Torchbearer  
Anniversaries. . . . . 9

2003 Torchbearers . . . . 10-14

2003 New Life Members . 15-16



# TORCH & TREFOIL

THE QUARTERLY PUBLICATION OF ALPHA PHI OMEGA  
NATIONAL SERVICE FRATERNITY

Summer 2004

*Special Summer Edition*

## FY 2003 Annual Report



*Pictured above: The National Office of Alpha Phi Omega in Independence, Missouri.*

## Why an Annual Report?

An annual report provides the opportunity to reflect on the previous year, to measure the ongoing progress, to review the Fraternity's financial status, to celebrate accomplishments, and to thank those many members who continue to support the organization. After several years of informal discussion, as well as encouragement from your Marketing Program Director and input from your Editor, we present you with Alpha Phi Omega's first Annual Report.

We feel honored and proud of the successful service goals we accomplished during the fiscal year of 2003, including the completion of 23,126 service hours during National Service Week. We had more than 2,000 participants in our APO LEADS program, and we have begun to focus on the needs of our alumni members. We continue to grow and prosper with more than 350 active chapters, while embracing partnerships with several national organizations, many of which view us as the leader in community service on college campuses.

I continue to be impressed with the generosity of our members as we recognize the 2003 Torchbearers in this special summer edition. While I would like to see more members donating to our Fraternity, I'm glad to see an increase in the amount of the average gift. I'm also happy to see the growing number of volunteers who are actively involved in supporting our chapters across the country.

To each member and chapter recognized in this Annual Report, I thank you personally for all you do to support and perpetuate the three Cardinal Principles of Alpha Phi Omega — Leadership, Friendship and Service.

*Bobby M. Hainline*  
National President

## TORCH & TREFOIL

Summer 2004 Vol. 80 No. 4

### NATIONAL PRESIDENT

Bobby M. Hainline, Dearborn, MI

### NATIONAL VICE PRESIDENT

Maggie Katz, Livonia, MI

### PROGRAM DIRECTORS

Lisa M. Covi, Ph.D., Highland Park, NJ

Julie A. Moore, Ph.D., Athens, GA

Carla Moran, Quincy, MA

Ed Richter, Franklin, OH

Keith D. Roots, Charlottesville, VA

Elizabeth Tom, M.D., Elko, NV

### REGIONAL DIRECTORS

I Marilyn Mims Dow, Peabody, MA

II Craig Muckle, Syracuse, NY

III Jamie L. Conover, Richmond, VA

IV Kimberlie H. Francis, Atlanta, GA

V Thomas W. Strong, Bethel Park, PA

VI Michael Leahy, Holland, MI

VII Belton Lim, Houston, TX

VIII W. Brant Warrick, Fayetteville, AR

IX Erica Roberts, Milwaukee, WI

X Kevin S. Simpson, Oakland, CA

XI David B. Corning, Olympia, WA

### NATIONAL EXECUTIVE DIRECTOR

Robert J. London, Independence, MO

### NATIONAL LEGAL COUNSEL

Richard F. Schmidt, J.D., Kansas City, MO

### NATIONAL ARCHIVIST

Robert C. Barkhurst, W. Dundee, IL

### INTERNATIONAL RELATIONS DIRECTOR

David A. Emery, Vancouver, BC

### PAST PRESIDENTS

Stan Carpenter, Ph.D., Bastrop, TX

E. Ross Forman, Philadelphia, PA

Tom T. Galt, M.D., Drayton, SC

Lawrence L. Hirsch, M.D., Northbrook, IL

Lorin A. Jurvis, Rockville, MD

Wilfred M. Krenek, Houston, TX

Jack A. McKenzie, Clemson, SC

Glen T. Nygreen, Ph.D., Scarsdale, NY

William S. Roth, Birmingham, AL

Gerald A. Schroeder, McLean, VA

Lucius E. Young, LTC, Ret., Spring Hill, FL

C.P. Zlatkovich, Ph.D., El Paso, TX

### LIFE MEMBERS

George F. Cahill, CAE, Pittsburgh, PA

Irwin H. Gerst, Palos Verdes Peninsula, CA

Roger A. Sherwood, CAE, Kansas City, MO

Warren C. Weidman, PE, Reading, PA

### EX-OFFICIO MEMBER

James L. Chandler, Irving, TX

**Alpha Phi Omega**  
NATIONAL SERVICE FRATERNITY

14901 E. 42nd Street South • Independence, MO 64055

816 • 373 • 8667

Fax: 816 • 373 • 5975 Email: executive.director@apo.org

Web Site: www.apo.org

# Leadership, Friendship

## Alpha Phi Omega Springs into Action: Service in 2003

Former President George H. W. Bush, an honorary member of Alpha Phi Omega, congratulated the Fraternity as it received the Daily Points of Light Award on April 14, 2003. The Points of Light Foundation, a national nonpartisan organization that promotes volunteerism, presented the award. President Bush described Points of Light as “caring citizens who volunteer their time and effort to help make the world a better place than they found it — whether through public service, or working through their church or synagogue, or a local club or organization.” The Fraternity received this honor due to its 77-year standard of Leadership, Friendship and Service.

*In 2003,  
4,023 Alpha Phi Omega members  
delivered 23,126 service hours as  
part of National Service Week,  
while 1,037 Alpha Phi Omega  
members contributed  
4,663 service hours during  
National Spring Service Day.*

The mission of the Fraternity focuses on providing service to humanity as well as providing opportunities for its members and college students to develop effective leadership skills. Read on to discover a sampling of the many Alpha Phi Omega 2003 Spring Service Day and National Service Week projects across the nation.

In New York, the **Epsilon Zeta Chapter at Renesselaer Polytechnic Institute** in Troy, New York, held a Junior Girl Scout Badge Day. Members of the **Alpha Delta Eta**

**Chapter at SUNY-Albany** assisted in staffing this event. Over 60 Scouts worked all day to complete requirements for the “Make It Matter” badge, performing numerous hands-on activities.

**Beta Zeta Chapter at the University of Georgia,** in Athens, Georgia, worked with Cub Scouts from a local



pack and helped the Scouts build park benches for a local nature center's trail.

**Nu Sigma Chapter at Stephen F. Austin State University** in Nacogdoches, Texas, held its fifth annual Youth Fair. APO Brothers spent the day engaging in a number of activities with 150 local children. The free fair included several activity booths and canned goods were collected and donated to the local food bank.

**Rho Pi Chapter at the University of California, San Diego,** sponsored a full weekend of NSSD activities to benefit the San Diego community, including spending quality time with underprivileged children at Pulitzer Place — a city-funded housing project. Other activities included a Mural



# & Service Accomplishments

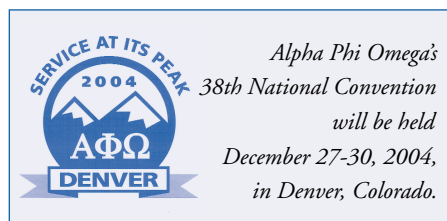
Painting Project and donations to the San Diego Rescue Mission.

**Delta Alpha Chapter at the University of Cincinnati** worked with the Big Brothers/Big Sisters Sports Buddies program and held a bowling and pizza party. Members were able to spend one-on-one time with their Little Sports Buddies, bowling while still interacting with the entire Sports Buddies group.

**Kappa Phi Chapter at Saint Lawrence University** in Canton, New York, hosted Alpha Phi Omega's Youth Soccer Day. More than 100 children from the local community participated in afternoon classes, warm-ups and soccer games.



Travel to any college campus across the nation in which there is an active Alpha Phi Omega chapter and you will find members actively engaged in service, making their campuses and their communities better places in which to live. Commitment to fostering a lifetime of service to all people – that's the APO way!



## Leadership in 2003: APO LEADS the Way

Ask most any Alpha Phi Omega member to name the first thing that comes to mind when he or she hears the word "leadership" and you'll hear, "APO LEADS!" One might think that this refers to the portion of the Fraternity's mission statement that reads, "To provide opportunities for its members and college students to develop effective leadership skills." And that is correct, but there is more.

The phrase is actually the name of the leadership development program of the Fraternity, *APO LEADS* – A Personal Odyssey of Learning, Leading and Serving. The *APO LEADS* program consists of five individual modular components of leadership development. Each component focuses on skills that will help participants to be successful leaders and team members in Alpha Phi Omega and in life. At the completion of the series of courses, participants will have a set of transferable skills that are applicable to Alpha Phi Omega, other campus organizations, the working world, and the community.

### The five components of the APO LEADS program are:

- **LAUNCH:** Launching your leadership development.
- **EXPLORE:** Exploring your leadership strengths and potentials.
- **ACHIEVE:** Achieving success through teams.
- **DISCOVER:** Discovering your management strengths and skills.
- **SERVE:** Serving the Fraternity and the world as a Leader.



Alpha Phi Omega members who complete the *APO LEADS* program are recognized for the dedication to their own leadership development and furthering the principles of the Fraternity.

### APO LEADS

launch | explore | achieve | discover | serve has been well received throughout the Fraternity. Thus far, the program has included the following participants:

**LAUNCH – 1,451**

**EXPLORE – 226**

**ACHIEVE – 343**

The fourth course of the program, *DISCOVER*, was launched in January 2004. This three-hour session focuses on strategies, including time and stress management, assertive communication, and self-motivation techniques. The final course, *SERVE*, will be available in late July 2004.

To find out how you can enroll in *APO LEADS* or become an *APO LEADS* presenter, click on

[www.leadership.apo.org](http://www.leadership.apo.org).

# FY2002-2003 Financial Summary

Alpha Phi Omega ended the fiscal year on a positive note. A number of factors contributed to this success: greater than expected attendance at the New Orleans National Convention; a tremendous effort by our National Board, Section Chairs, and other volunteers to clean up our membership reporting; the fortitude shown by the National Convention to make tough, sound decisions regarding our still incredibly low membership fees; and the most generous giving ever by Fraternity alumni, students, and friends, which allowed the Fraternity to exceed its FY2002-2003 Annual Fund goal of \$130,000. Additionally, the Endowment was most fortunate to receive a \$250,000 gift in the form of a Charitable Gift Annuity.

Eighteen \$500 scholarships were given from the Mack Scholarship Fund, while 11 youth service projects were funded from the Jadel Youth Service Program.

The charts below provide a graphic picture of the Fraternity's revenue sources and expenses. You will see that our membership fees make up the largest portion of our revenue (45% of the total). Program Services (services to chapters, petitioning and interest groups) command the largest

relative proportion (59%) of our expenses. We should take pride in the fact that we are not balancing the Fraternity's budget on the backs of our student members. Alpha Phi Omega's general administrative expenses remain at 9%, an excellent figure in the world of not-for-profit organizations.

This is wonderful news and we should be proud of our accomplishments in FY2002-2003. However, we cannot rest on last year's laurels. The Fraternity must continue to push forward with generous giving, accurate and timely reporting, and prompt submission of membership dues (AAMD).

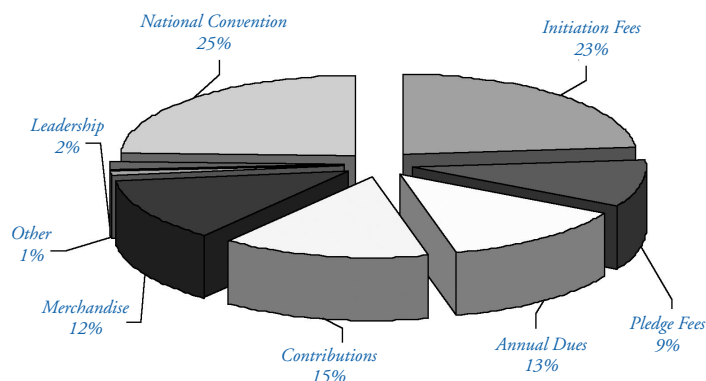
I want to take this opportunity to thank everyone who played a role in the Fraternity's success this past year, particularly to Brother Bob London and the staff of the National Office.

Please do not hesitate to contact me at [finance.director@apo.org](mailto:finance.director@apo.org) if you desire any additional information.

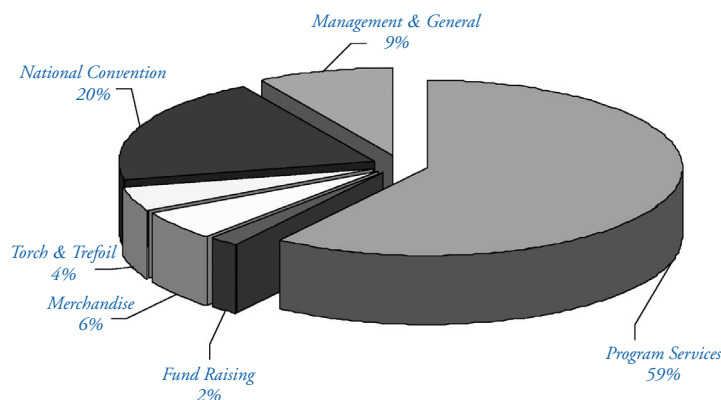
Keith D. Roots

Finance/Operations Program Director

## REVENUE Where the Money is Generated



## EXPENSES Where the Money is Spent





# Annual Financial Statements & Review

			AUGUST 31,				
Statement of Financial Position			2003 Actual	2002 Actual	2003 Budget	2003 Over/ (Under) Budget	
ASSETS	2003	2002	REVENUES				
Current Assets			Pledge Fees	94,770	85,790	90,000	4,770
Cash & Interest Bearing Deposits	216,862	382,676	Initiation Fees	234,880	186,125	191,275	43,605
Accounts Receivable	10,309	5,601	AAMD	131,175	122,295	124,725	6,450
Merchandise for Sale	45,722	42,823	Subtotal	460,825	394,210	406,000	54,825
Printed Materials	32,715	31,918	Sale of Merchandise	125,010	85,006	125,000	10
Prepaid Expenses	46,047	8,924	Contributions - Unrestricted	130,716	127,633	130,000	716
Total Current Assets	351,655	471,942	Contributions - Restricted	14,447	121,395	134,800	(120,353)
Investments	289,317	65,540	Leadership Services	16,543	0	20,000	(3,457)
Property & Equipment			Other Revenue	14,777	10,415	36,300	(21,523)
Land	93,000	93,000	National Convention	244,551	0	179,000	65,551
Building and Improvements	245,613	245,613	Subtotal	546,044	344,449	625,100	(79,056)
Equipment	75,817	63,988	TOTAL REVENUE	1,006,869	738,659	1,031,100	(24,231)
Furniture & Fixtures	33,685	33,685	Program Activities				
Less Accumulated Depreciation	234,726	210,652	Salaries & Health Ins	337,580	353,891	370,146	(32,566)
Total Property & Equipment	213,389	225,634	Payroll Taxes	26,556	27,374	28,022	(1,466)
TOTAL ASSETS	854,361	763,116	Executive Search/Relocation	25,205	14,495	10,333	14,872
LIABILITIES & NET ASSETS			Executive Benefits	15,000	6,250	15,000	0
Current Liabilities			Printing	25,269	51,761	40,435	(15,166)
Accounts Payable-Chapters	20,187	9,499	Telephone	7,704	10,544	9,000	(1,296)
Accounts Payable-Vendors	17,141	9,928	E-mail/Internet	2,183	4,069	2,600	(417)
Accrued Expenses	13,914	18,767	Postage	24,565	31,632	26,000	(1,435)
Due to Endowment	1,000	1,150	Copier	12,082	12,377	12,200	(118)
Funds Held for Chapters	8,772	5,112	Staff Visitation	15,028	14,315	25,000	(9,972)
Net Assets			NW Support	2,291	1,106	2,500	(209)
Unrestricted	416,126	326,231	Cert & Awards	5,637	3,042	5,200	437
Temporarily Restricted	203,064	223,223	Alumni Services	12,066	2,973	12,500	(434)
Permanently Restricted	174,157	169,206	Leadership Development	18,622	6,195	31,000	(12,378)
Total Net Assets	793,347	718,660	Pres. Discr. Fund	0	0	500	(500)
TOTAL LIABILITIES & NET ASSETS	854,361	763,116	Board Meeting	4,535	1,810	3,500	1,035
			Public Relations/Advertising	0	0	250	(250)
			BANC Program	2,536	1,495	2,000	536
			Scouting Relations	1,500	1,486	1,500	0
			J B Fund Distributions	4,200	19,832	42,500	(38,300)
			Mack Scholarship	9,000	9,000	16,500	(7,500)
			Jadel Youth	4,209	5,677	5,500	(1,291)
			Service	1,818	1,965	6,800	(4,982)
			Total Program Activities	557,586	581,289	668,986	(111,400)
			Other Services				
			National Convention	182,039	0	160,488	21,551
			Purchase of Merchandise	53,008	43,393	46,440	6,568
			Torch & Trefoil	41,415	39,585	42,000	(585)
			Total Other Services	834,048	664,267	917,914	(83,866)
			Support Services				
			Management & General	81,170	80,223	80,186	984
			Fund Raising	16,964	19,916	30,500	(13,536)
			Total Support Services	98,134	100,139	110,686	(12,552)
			Total Expenses	932,182	764,406	1,028,600	(96,418)
			Change in Net Assets	74,687	(25,747)		
			FUND BALANCE, BEG OF YR	718,660	744,407		
			FUND BALANCE, END OF YR	793,347	718,660		

Alpha Phi Omega

FY2003 MEMBERSHIP STATISTICS

(Sept. 1, 2002 - Aug. 31, 2003)

Active Chapters: 350      Pledges: 9,477

Initiates: 8,150      AAMD: 8,739

## Alpha Phi Omega FY2003 MEMBERSHIP STATISTICS (Sept. 1, 2002 - Aug. 31, 2003)

Active Chapters: 350      Pledges: 9,477  
Initiates: 8,150      AAMD: 8,739

## In Remembrance...

The following donors generously gave gifts in memory of Alpha Phi Omega members who passed away during 2003.

### In Memory of Joe Morrone:

Alycia H. Bauch-Cantor	Ellen Kranzer
John Brahms	Martin Kuhn
Jeffrey L. Cantor	Joel A. Lake
Lisa M. Covi	Jack A. McKenzie
Mr. & Mrs. Louis DeVicaris	David P. O'Leary
E. Ross Forman	Donald Onimus
Lorin Jurvis	Betty Rauch
Mr. & Mrs. Chester Klab	

Daniel Rauch  
Steven Rellis  
David W. Schuler  
Thomas I. Sheaffer  
Warren C. Weidman  
Jared S. Werneil  
Anonymous

### In Memory of Ruth Hancock:

Michael Leahy  
Jack A. McKenzie  
Anonymous

Few things are more compelling in today's hectic, bottom-line world than the immense power of those who strive to serve their college campuses, their communities and humanity in the name of Leadership, Friendship and Service. Those who seek membership in the Fraternity that is Alpha Phi Omega believe in this power — the power that evokes a sense of commitment, the power that embraces the spirit of volunteerism.

Memories of youth live deep within our souls. The question arises, "Do members leave Alpha Phi Omega once they graduate? Is it only a college experience?" People do move on with life experiences such as careers and family, but the deep sense of commitment to a cause, of knowing that volunteering for service to others helps to make a difference in people's lives, remains embedded in the hearts of APO members everywhere. At some point in our members' lives, these experiences translate into fostering better human relationships and more well-rounded communities. Alpha Phi Omega members know that their college experience will be magnified a thousand-fold because they took the time to participate in activities that made a difference.

There are many Alpha Phi Omega alumni who still maintain an active connection with the Fraternity — by volunteering as a committee member, Chapter Advisor, Section Staff member, Section Chair, or National Board member; through monetary gifts to the Fraternity or to the Alpha Phi Omega Endowment Trust; by receiving the quarterly issue of the *Torch & Trefoil*. Alpha Phi Omega is blessed with alumni who donate countless hours of their time and talents, and, at the same time, their treasure. Students in Alpha Phi Omega benefit from the guidance and wisdom of alumni who have come before them. Being an alumni volunteer is a wonderful way to provide a tangible example of Leadership,

# The Spirit of Giving...

Friendship and Service to students.

In addition to volunteering time and talents, Alpha Phi Omega alumni are generous with gifts of treasure. Jack Jadel (Zeta Kappa '50, Bowling Green University) believes that, "Alpha Phi Omega provides the vehicle during college years that instills in students a sense of commitment to community service that can continue long after graduation." Through strong alumni giving, the Fraternity can leverage this ability to enable college students to actively seek to continue service to their communities throughout life.



Jack Jadel

Jack recently gave a \$250,000 Two-Life Immediate Charitable Gift Annuity to the Alpha Phi Omega Endowment Trust. This type of charitable gift vehicle is a win-win for the Endowment Trust and for Jack and his wife, Louise. The Endowment Trust benefits from the interest earned through the Annuity, and Jack and his wife receive income during their lifetime. Upon the death of Jack and his wife, the remainder of the Gift Annuity will pass to the Alpha Phi Omega Endowment Trust, which provides support to the Fraternity.

In addition to gifts of cash, Alpha Phi Omega donors utilize a variety of giving options. Dave O'Leary (Kappa '83, Carnegie Mellon University) and Lisa Covi, Ph.D. (Kappa '81, Carnegie Mellon University) have made gifts of appreciated securities to the Fraternity.



Dave O'Leary

In doing so, Dave

and Lisa have provided wonderful gifts to the Fraternity by using appreciated assets. They expressed their thoughts on giving to Alpha Phi Omega this way, "We choose to contribute both time and money to Alpha Phi Omega because the Fraternity provides such an excellent opportunity for college students to learn and develop key life skills and the habit of serving others."



Lisa Covi, Ph.D.

Beth Tom, M.D. (Iota Phi, '79, University of California at Davis), Alpha Phi Omega Marketing Program Director and David Overhauser, Ph.D. (Alpha Gamma, '81, Purdue University), feel that contributions to Alpha Phi Omega are critical to the Fraternity's future growth.



Beth Tom, M.D.

Beth feels that, "Stewardship is the servant leadership characteristic that immediately hits home with me. I owe my professional success and my continued personal growth to Alpha Phi Omega. I volunteer my time because I know how important personal contact with alumni was for me. I also know that it takes money to increase and improve support and services to our chapters and members."

David sees gifts to Alpha Phi Omega as an opportunity to leverage service. "As each of us moves through steps in life, we need to find optimal ways to leverage our impact in service



David Overhauser, Ph.D.

to others. In the past I advised chapters, but with a new family and business, the best way for me to support Alpha Phi Omega at this time is through financial support so that Fraternity officers can focus their time on leadership, programs and initiatives rather than annual budget fund raising.”

One may ask, “What is the difference between the Annual Fund and the Endowment Trust?” The Annual Fund supports the day-to-day operating expenses of the Fraternity. It provides much-needed revenue for things such as chapter services, membership records and operating funds for the National Office. Chapters receive supplies and

Endowment Trust. Gifts to the Endowment Trust ensure that Alpha Phi Omega’s legacy will burn brightly across college campuses throughout the nation long after our life’s work is completed.

A gift of Life Membership is a great way that students can participate in growing the Endowment Trust. A student’s cost for Life Membership is only \$50. Alumni can become Life Members for only \$100. Life Membership in Alpha Phi Omega is an opportunity for members to financially support the long-term stability of the Fraternity. It should be noted that student members who purchase Life Memberships are still required to pay Annual Active

# Continue the Legacy

materials, program materials are developed and taught, and the National Office ensures communication throughout the Fraternity.

Many donors take advantage of corporate matching gift programs. Depending on the corporation, employers may match employee charitable contributions dollar-for-dollar or as a percentage of donations made. If donors to Alpha Phi Omega’s Annual Fund choose to participate in their employers’ matching gift programs, those contributions are counted toward Torchbearer status. Many donors have been able to double their contributions to the Annual Fund through corporate matching gift programs.

The purpose of the Alpha Phi Omega Endowment Trust is to provide long-term benefits for the goals and perpetuation of the Fraternity. This is accomplished by utilizing the interest earned from the principal in the Endowment Trust for appropriate financial support, such as new programming. Donors are asked to continue their Annual Fund gifts in addition to providing gifts to the

Membership Dues (AAMD’s). Income from Life Member investment can be used to provide enhancements to specific Fraternity programs, capital improvements and other long-term goals. Those who invest in Life Membership receive a Life Member lapel pin, a Life Member certificate suitable for framing, a wallet-size Life Member card, and a lifetime subscription to the Fraternity’s quarterly publication, *Torch & Trefoil*.

## Why give to Alpha Phi Omega?

Alumni have the power to ensure that Alpha Phi Omega continues to expand its values of Leadership, Friendship and Service throughout the nation. Our gifts provide solid financial footing for the Fraternity. Those who came long before us created the flame that today burns brightly as our beloved Fraternity, Alpha Phi Omega. It is up to us to ensure that the flame continues to burn for future generations of Alpha Phi Omega members to advance the principles of Leadership, Friendship and Service for their campuses, their communities, and humanity.

One has only to look at APO’s stunning record of service to see the evidence of thousands of college students who took the time to make a difference. In 2003 alone, Alpha Phi Omega members contributed 23,126 hours of service during National Service Week, performed 4,663 hours of service during Spring Service Day and, to date, have had more than 2,000 participants in *APO LEADS*.

## Matching Gifts

*Many employers will match gifts made by employees to qualifying Internal Revenue Code 501(c)(3) organizations such as Alpha Phi Omega. Some employers will match retired employees’ gifts, as well as planned gifts. Alpha Phi Omega thanks the following corporations that matched employee gifts to Alpha Phi Omega during Fiscal Year 2003:*

**American International Group, Inc.**  
**BP Pipelines (North America)**  
**Computer Associates International, Inc.**  
**CSG Systems, Inc.**  
**Gannett Foundation**  
**Microsoft**  
**Motorola Foundation**  
**Pepsico Foundation**  
**Rohm and Haas Company**  
**The Chubb Corporation**  
**Verizon Foundation**

Donors to Alpha Phi Omega make a difference. They are a part of the engine that powers APO synergy. What we do today may be the catalyst that transforms the lives of people we may never meet. Generous gifts, whether they are to the Annual Fund or to the Endowment Trust, will enable the flame that Frank Reed Horton lit to burn brightly forever among Alpha Phi Omega members everywhere!

Get on board the engine that will power Alpha Phi Omega synergy through the 21st century and beyond. Continue the legacy that you began as a student. Become a donor to Alpha Phi Omega.

*For information on how you can make a gift to Alpha Phi Omega, contact Sandra Ferguson, Director of Development by phone at 816-373-8667, ext. 18 or by e-mail: [development.director@apo.org](mailto:development.director@apo.org).*

# Ways to Give to Alpha Phi Omega

## Outright Gifts

**Gifts of Cash** — the simplest, most frequently used method of providing outright support for Alpha Phi Omega, whether currency, personal check or credit card authorization. Donors may use the Giving Envelopes in each issue of the Torch and Trefoil to mail contributions, as well as the Spring Annual Fund pledge card and reply envelope. Note: Look for the fast, easy convenience of online giving to be available before the end of 2004!

**Corporate Matching Gifts** — allow donors to double (or in some cases even triple) their support to Alpha Phi Omega by using employer matching gift programs. Donors should check with their employer's Human Resources office to request the appropriate forms to begin this program.

**Gifts of Appreciated Securities** — include such vehicles as marketable stocks, bonds, mutual fund shares, or IRAs. Appreciated securities offer a win-win situation for both Alpha Phi Omega and donors: APO receives a wonderful charitable gift and, in many cases, donors may receive substantial tax benefits.

**Life Memberships** — are held and invested by the Endowment Trust. Life Membership gifts provide a way for both students and alumni to contribute to the Endowment Trust. Students may purchase Life Memberships for only \$50; alumni Life Memberships are \$100. A lifetime subscription to the Torch and Trefoil is included as a benefit of Life Membership.

## Deferred Gifts

**Life Insurance** — is a great way to make a deferred gift to Alpha Phi Omega. Think you are too young to make a gift to APO? Many organizations now offer life insurance as an employee benefit. Donors, whether just

starting out in first jobs or as seasoned employment veterans, may designate APO as a beneficiary on these insurance policies. Of course, individuals may purchase life insurance on their own and designate APO as a beneficiary.

**Wills/Bequests** — are easy ways to make deferred gifts to Alpha Phi Omega. If donors are considering or have listed Alpha Phi Omega as a beneficiary in a will, or are planning to leave a bequest to Alpha Phi Omega, please inform the National Office so that we may include this information as a part of donor giving records. Donors may leave a percentage of their estate or a specific dollar amount as a charitable gift.

**Charitable Gift Annuities** — are contracts by which donors give cash or marketable securities such as stocks or bonds (including mutual funds) to Alpha Phi Omega. In exchange, donors or their designees will receive fixed payments for life. Gift annuities offer several distinct advantages for those donors who qualify to give this type of gift: guaranteed income for life, tax deduction savings, partial tax-free income, potential capital gains tax savings and, most important, the personal satisfaction of making a gift of lasting significance. Donors should consult with their estate planning advisors when considering charitable gift annuities.

**Charitable Remainder Trusts** — provide income to donors or other beneficiaries for life, leaving the remainder to Alpha Phi Omega at the end of the trust. Donors should consult with their estate planning advisors when considering charitable remainder trusts.

**Charitable Lead Trusts** — provide income to Alpha Phi Omega for a set term of years, after which the remainder may be transferred to donors' families or heirs. This arrangement also provides a charitable deduction to donors for APO's income interest and, under the proper circumstances, can allow donors to pass property to family members at a greatly reduced estate or gift tax cost. Donors should consult with their estate planning advisors when considering charitable lead trusts.

*Your Gift is Appreciated!*

## Our Sincere Thanks Goes to Those Who Served as Dedicated Volunteers in 2003:

### NATIONAL BOARD OF DIRECTORS

Bobby M. Hainline,  
National President  
Maggie Katz,  
National Vice President

#### Program Directors:

Lisa M. Covi, Ph.D.  
Julie A. Moore, Ph.D.  
Carla Moran  
Ed Richter  
Keith D. Roots  
Elizabeth Tom, M.D.

#### Regional Directors:

I - Marilyn Mims Dow  
II - Craig Muckle  
III - Jamie L. Conover

IV - Kimberlie H. Francis  
V - Thomas W. Strong  
VI - Michael Leahy  
VII - Belton Lim  
VIII - W. Brant Warrick  
IX - Erica Roberts  
X - Kevin S. Simpson  
XI - David B. Corning

Robert J. London,  
National Executive  
Director

Richard F. Schmidt, J.D.,  
National Legal Counsel

Robert C. Barkhurst,  
National Archivist

David A. Emery,  
International Relations  
Director

#### Past Presidents:

Stan Carpenter, Ph.D.  
E. Ross Forman  
Tom T. Galt, M.D.  
Lawrence L. Hirsch, M.D.  
Lorin A. Jurvis  
Wilfred M. Krenek  
Jack A. McKenzie  
Glen T. Nygreen, Ph.D.  
William S. Roth  
Gerald A. Schroeder  
Lucius E. Young, LTC,  
Ret.  
C.P. Zlatkovich, Ph.D.

#### Life Members:

George F. Cahill, CAE,  
Irwin H. Gerst  
Roger A. Sherwood, CAE  
Warren C. Weidman, PE

#### Ex-Officio Member:

James L. Chandler

### ENDOWMENT TRUSTEES

Stan Carpenter, Ph.D.,  
Chair  
Dr. Philip M. Pfeffer,  
Vice Chair  
John C. Childs  
Maura Harty  
John C. Jadel

Wilfred M. Krenek  
Philip H. Prince

### SECTION CHAIRS

#### Section 1

Jack Tulatammagul  
Ray Warriner

#### Section 2

John Nguyen  
Annie Wang

#### Section 4

Anna Ng

#### Section 7

Jack Dostal



# Our Sincere Thanks Goes to Those Who Served as Dedicated Volunteers in 2003:

*Section 8*  
Joseph Alyea  
Shannon Alyea

*Section 10*  
Lyndon Marquez

*Section 21*  
Ginny Combs

*Section 23*  
Kevin Harris

*Section 26*  
Michael Whitfield

*Section 27*  
William Sparkes  
Kari Trunnell

*Section 30*  
Stephanie Barkmeyer

*Section 32*  
Jennifer Churchill  
Abigayle Tobia

*Section 33*  
Joshua Adams  
Jason Hemphill

*Section 34*  
Galen Carter  
Andrea Nugent

*Section 35*  
Aasha Blakely  
S. Rodman Schnell

*Section 40*  
Cole Robertson

*Section 41*  
James Little  
Stella Mulberry

*Section 43*  
Taylor Haglund

*Section 44*  
Shari Rose

*Section 45*  
Susana Reyes-Lee

*Sections 47 & 48*  
Christopher Tracy

*Section 49*  
James Roach

*Section 50*  
Sol Roberts-Lieb

*Section 51*  
Jeremy Bingman

*Section 52*  
David Sides

*Section 54*  
Scott Merritts

*Section 56*  
Melody Martin

*Section 59*  
Regina Forbes

*Section 61*  
Heather Schartiger

*Section 62*  
Kathleen Habel

*Section 64*  
Alan Dudinsky

*Section 67*  
Joseph Glerum  
John Strada

*Section 68*  
Stephen Hendrix  
Martha Hunter

*Section 69*  
Frank Goodhew  
Kevin Hicks

*Section 70*  
Kenneth Hunter  
Kristi Reed

*Section 72*  
Kami Bush  
Michael Francis

*Section 74*  
Matthew Cross

*Section 77*  
Stacie Dover  
Wesley Wightman

*Section 79*  
Michelle Rash

*Section 80*  
Carrie Hixon  
Henry Marx  
Andria Temple

*Section 81*  
Melissa Plott

*Section 83*  
Dawn Gurganious

*Section 84*  
Malcolm Lee

*Section 88*  
Michael Haber

*Section 89*  
Howard Barnes

*Section 90*  
Melvin Hellem

*Section 91*  
Allison Ludlow  
Christina Vanacore

*Section 92*  
Colleen Courtney  
Jeffrey Esposito

*Section 94*  
Joseph Hausmann

*Section 96*  
Ellen Kranzer  
Thomas Salter

*Section 97*  
Paul Romain

*Section 98*  
Mayra Rivera  
Luis Rosario-Ortiz

*Section 99*  
Christopher Duvall  
Jennifer Meehan

## 2003 Torchbearer Anniversaries

*Alpha Phi Omega's Torchbearer giving program includes many donors who have generously contributed to the Annual Fund throughout the years. Congratulations to the following Torchbearers who, in 2003, celebrated 25, 20, 15, 10, and 5 years of giving to Alpha Phi Omega. These are significant milestones in the Fraternity's giving history. We also wish to acknowledge that there are many members who are in the process of achieving these milestones.*

### 25 YEARS

William E. Bammel  
Abe Frishman  
Paul A. Sicard

### 20 YEARS

Miles A. Cato  
James H. Chapman  
Diana M. Dloughy  
Ellen D. Kranzer  
Wilfred M. Krenak  
James W. Pate  
Ronald S. Rosen  
Philip J. Sallee  
Edward H. Stech  
Kirk J. Thieroff  
John M. Wetherington  
Brian R. White

### 15 YEARS

Bridget Bambling  
Constance M. Beauchamp  
Donald J. Beckel  
Michael D. Beyer  
Allan L. Butler  
Stan Carpenter  
William E. Cook  
Raymond M. Czarnica  
Keith W. Davidson  
Harold V. Eason  
David A. Emery  
Darren M. England  
Michael J. Ercole  
William R. Fromm  
Karin P. Goodman  
Hal E. Hagemeier  
Richard J. Keogh  
Susan B. Meyer  
Michael K. Musgrave  
Clarence A. Souders  
Richard J. K. Stratford  
James D. Templeton  
Warren C. Weidman  
Larry A. Wood

### 10 YEARS

Marshall D. Abrams  
Eric D. Bauer  
Craig S. Donais  
Patricia L. Esposito  
Emilio Mel S. Gonzales  
John H. Havron  
Thomas W. Jackson  
Ellis Jacobs  
Stephen F. Kirchoff  
Joel A. Lake  
Paul M.H. Lienhardt  
John T. Lyons  
Eileen S. McGee  
Joseph G. Monteleone  
Brian and Jennifer Moore  
David P. O'Leary  
Thomas G. Poley  
Lawrence J. Putong  
Teri Sheets  
Jeff D. Thomas  
Julie Whitfield  
Leonard A. Zigmant

### 5 YEARS

Hans I. Boerner  
J. Adam Bolain  
Michael R. Brown  
Harold A. Crawford  
Chuck R. Devita  
Markus Dinkel  
Richard F. Drost  
Richard D. Dutcher  
Christopher Duvall  
Charles W. Eisenmann  
Benjamin J. Evans  
Rebecca B. Finifter  
Gary T. Flodin  
Christian H. Fredericks  
Carol M. Green  
Howard L. Henry  
Sara J. Henry  
Rollin H. Hill  
Kevin M. Iga  
Allen J. Jacks  
Erica C. Kobylinski  
Daniel T. Konkle  
Michael G. Kozinetz

### 5 YEARS (cont'd.)

Gary J. LaBelle  
Sidney L. Lawrence  
Kimberly A. Leo  
Kristine C. McIntosh  
Jennifer R. Reimer  
Edward J. Richter  
Douglas G. Ries  
Christopher D. Saguisag  
Amy Beth Scalet  
Matthew F. Schieferstein  
James L. Sedlak  
Dan K. Seilheimer  
Thomas M. Sproat  
Aimee E. Tilley  
Dawn E. Wagoner  
Jay P. Zollicoffer

# 2003 TORCHBEARERS

In this issue of the *Torch & Trefoil*, we recognize our donors. Those Brothers giving a minimum of \$75 are recognized as Torchbearers. Those Brothers giving \$150 or more are recognized as Silver Torchbearers, those giving \$250 or more are recognized as Gold Torchbearers, and those giving \$500 or more are recognized as Diamond Torchbearers. Those Brothers giving \$1,000, \$2,500 and \$5,000 or more are recognized respectively as Silver, Gold and Diamond Founders Circle Members.

All donors are important and necessary to the operation of the Fraternity. They all help ensure that Leadership, Friendship, and Service are kept alive and affordable on our campuses. They invite you to join them in their commitment.

## Alpha

*Lafayette College*

### GOLD TORCHBEARER

Douglas M. Harris - 24  
John H. Thomas - 19

## Beta

*University of Pittsburgh at Pittsburgh*

### GOLD TORCHBEARER

William A. Murphy Jr. - 23  
SILVER TORCHBEARER  
Heather S. Callahan - 1  
TORCHBEARER  
Harold F. Marks Jr. - 13

## Gamma

*Cornell University*

### SILVER FOUNDERS CIRCLE

Robert G. Stevens - 9  
GOLD TORCHBEARER  
Richard J. Bojko - 16  
SILVER TORCHBEARER  
Gerald R. Bertoldo DVM - 17  
Steven Keal Siegert - 9  
TORCHBEARER  
Laura Ann Nicoll - 2  
Elizabeth A. Parrella - 2  
David Barry Singer - 17

## Delta

*Auburn University*

GOLD TORCHBEARER  
Gregory Kent Whitfield - 14  
SILVER TORCHBEARER  
Julius Charles McCall - 6  
TORCHBEARER  
James J. Goodwin - 13  
Daniel T. Konkle - 5  
James L. McAlarney III - 7  
David R. Self - 1

## Epsilon

*Truman State University*

GOLD FOUNDERS CIRCLE  
Brian & Jennifer Moore - 10  
TORCHBEARER  
Jennifer Roxanne Reimer - 5  
James W. Roach - 1

## Zeta

*Stanford University*

TORCHBEARER  
James A. Cochran - 6  
Calvin T. Eng - 1  
C. Andrew Johns - 4  
David T. Miura - 17  
Gregory Scott Schwartz - 4

## Eta

*Northern Illinois University*

SILVER TORCHBEARER  
Kristen L. Cade - 1  
Richard N. Wiltberger - 23  
TORCHBEARER  
John E. Hanke - 14

## Theta

*University of Virginia*

DIAMOND TORCHBEARER  
Keith Dyland Roots - 3  
SILVER TORCHBEARER  
Kathy E. Carter - 9  
TORCHBEARER  
Joel W. Enteles - 3  
Thomas G. Poley - 10

## Kappa

*Carnegie Mellon University*

DIAMOND FOUNDERS CIRCLE  
Lisa M. Covi - 11  
David Paul O'Leary - 10  
GOLD FOUNDERS CIRCLE  
John Gardiner Myers - 11  
SILVER FOUNDERS CIRCLE  
Ross W. Comer - 12  
GOLD TORCHBEARER  
Karl E. Voigt - 27

## SILVER TORCHBEARER

John R. Koslow - 9  
TORCHBEARER  
Marshall David Abrams - 10  
Lori N. & Vincent T. Bocchino - 8  
Maureen J. Burruss - 14  
Jeffrey L. Cantor - 1  
Daniel J. Casey - 4  
Deborah Cherry - 3  
Kenneth E. Kloss - 8  
Benjamin Kutler - 4  
Charles P. Lawton - 14  
Andrea Marie Okerholm - 2  
Elaine M. Ramundo - 2  
Milton D. Smith - 13  
Lawrence Solomon - 1  
Thomas W. Strong Jr. - 3  
Edward V. Weber - 19

## Lambda

*University of Kansas*

SILVER TORCHBEARER  
Frank J. Gasperich Jr. - 23  
TORCHBEARER  
Weldon L. Sportsman - 13

## Mu

*Indiana University*

SILVER TORCHBEARER  
Stephen E. Kirchhoff - 10  
Kelly Lynn Ross - 4  
TORCHBEARER  
Stacy Lynn Bennett - 2  
Hans I. Boerner - 5  
Kevin S. Connelly - 14  
Tricia Leigh Ethier - 6  
Susan E. Krier - 2  
Alan D. Schmetzer - 18

## Xi

*Iowa State University*

SILVER TORCHBEARER  
Lee M. Maddocks - 16  
Richard Reade - 18  
Doug White - 24  
TORCHBEARER  
Roger A. Winslow - 24

## Omicron

*University of Iowa*

TORCHBEARER  
Bridget Bambling - 15  
Sarah Burton - 1  
Kimberly A. Leo - 5  
Paul & Bette Wells - 2

## Pi

*Kansas State University*

SILVER TORCHBEARER  
Bruce E. Peters - 14  
TORCHBEARER  
John B. Corwin - 19  
Kevin C. Flinn - 3  
B. Ellen Johnson - 6  
Ronald A. Kite - 19

## Rho

*University of North Carolina at Chapel Hill*

GOLD TORCHBEARER  
Wiehrs Lewis Collier - 13  
SILVER TORCHBEARER  
Marvin Marty Mason Jr. - 4  
TORCHBEARER  
Stephen A. Jolly - 23  
Catherine Marshall Long - 1  
John Charles Rush - 14

## Sigma

*Northwestern University*

TORCHBEARER  
Donald L. Robinson - 9

## Tau

*University of Florida*

GOLD TORCHBEARER  
Douglas D. Dankel II - 17

## Upsilon

*Univ of Wisconsin-Milwaukee*

GOLD TORCHBEARER  
Vaughn F. Gehrt - 16  
TORCHBEARER  
Thomas A. Wight - 16

## Phi

*Syracuse University*

GOLD TORCHBEARER  
Franklin E. Powell Jr. - 22  
SILVER TORCHBEARER  
Marilyn Lee Mims Dow - 2  
TORCHBEARER  
Martin J. Alpert - 3  
Lawrence D. Hasseler - 18  
Leonard A. Zigmant - 10

## Chi

*University of California at Los Angeles*

TORCHBEARER  
Alicia Karen Louie - 1  
Charles F. Veden - 18

## Omega

*Drake University*

TORCHBEARER  
Lauren Elizabeth Langford - 1  
Jeff M. Neurauter - 3

## Alpha Alpha

*University of Illinois at Urbana-Champaign*

DIAMOND TORCHBEARER  
Howard B. Chodash - 12  
SILVER TORCHBEARER  
Ronald C. Berman - 16  
Christopher G. Mulcahy - 6  
TORCHBEARER  
Jeremy Bingman - 1  
David P. Goode - 4  
Peter Joelson - 22  
Kristine Celeste McIntosh - 5  
William Ralph Saintey - 21  
Charles Svoboda - 1  
Louann Svoboda - 1

## Alpha Beta

*Pennsylvania State University/University Park Campus*

GOLD TORCHBEARER  
Leon E. App - 16  
Roger C. Burket M.D. - 11  
SILVER TORCHBEARER  
David William Schuler - 16  
William N. Wittmer - 17  
TORCHBEARER  
Scott F. Harris - 1  
Richard I. Koval - 1  
Graham Mehl - 3  
Maureen Snare - 1  
Karen L. Visick - 1  
Michael E. Wiener - 1

## Alpha Gamma

*Purdue University*

DIAMOND FOUNDERS CIRCLE  
David Overhauser - 9  
DIAMOND TORCHBEARER  
Anthony Ploughe - 8  
Phillip C. Wankat - 21  
GOLD TORCHBEARER  
Matthew R. Dashiell - 7  
Christopher R. Heim - 9  
Thomas W. Jackson - 10  
Karen S. Snapp - 17  
SILVER TORCHBEARER  
Thomas R. Brennan - 11  
Roger S. Young - 12  
TORCHBEARER  
Robert Lou Bach - 12  
John E. Bassett - 12  
Eric D. Bauer - 10  
Alden W. Brooks - 6  
William G. Hessler - 4

Natalie Lynn Pagelsen - 2  
Lisa Ann Prestholdt - 1

## Alpha Delta

*San Diego State University*

TORCHBEARER

Michael R. Kerney - 2

## Alpha Epsilon

*Louisiana State University*

TORCHBEARER  
Reed F. Bilbray - 16  
Michelle M. L. Bowen - 9

## Alpha Zeta

*University of Kentucky*

TORCHBEARER  
Karla Gail Conn - 1

## Alpha Eta

*University of Missouri-Kansas City*

GOLD TORCHBEARER  
David Wooldridge - 4  
Sandra J. Ferguson - 1

## Alpha Theta

*Univ of Nebraska-Omaha*

TORCHBEARER  
Edward H. Stech Jr. - 20

## Alpha Iota

*Ohio State University*

SILVER TORCHBEARER  
Barbara R. Anderson - 18  
TORCHBEARER  
Ronald E. Pierson - 8  
Edward J. Richter - 5

## Alpha Kappa

*University of Southern California*

TORCHBEARER  
James C. Isaac Jr. - 12  
Thomas M. Shigemitsu - 1

## Alpha Omicron

*Southern Methodist University*

SILVER TORCHBEARER  
Robert L. Mazanec - 7  
TORCHBEARER  
Latasha Perreault - 6

## Alpha Pi

*University of Miami*

DIAMOND TORCHBEARER  
Julian E. Laughinghouse Jr. - 18

## Alpha Rho

*University of Texas at Austin*

SILVER FOUNDERS CIRCLE  
Wilfred M. Krenek - 20  
DIAMOND TORCHBEARER  
John M. Childs - 22  
George Dacy - 13  
GOLD TORCHBEARER  
Charles W. Eisemann - 5  
Abe Frishman - 25  
SILVER TORCHBEARER  
Kimberlie H. Francis - 2  
Robert A. Lanis - 18  
Hunter Z. Werla - 3  
TORCHBEARER  
Kenneth Newt Andrews - 6  
C. Stewart Ash - 1  
Michael A. Bucek - 3  
Sydney Diana Burton - 4  
Bebe Barbara Carpenter - 8  
Hal E. Hagemeyer - 15  
Robert Burton Kamon - 14  
Sidney L. Lawrence - 5  
Roger Ludlow - 6  
Wallace Marsh - 3  
Sabin W. Marshall - 19  
Julie Ann Moore - 13  
Dan Keith Seilheimer M.D. - 5

## Alpha Sigma

*University of Nebraska at Lincoln*

TORCHBEARER  
James H. Chapman M.D. - 20

# 2003 TORCHBEARERS

**Alpha Tau**  
Butler University  
TORCHBEARER  
Paul Robert Meyers - 6

**Alpha Phi**  
Washington University  
SILVER TORCHBEARER  
George R. Kober - 7  
TORCHBEARER  
David W. Deitch - 12  
Sara Tanenbaum - 9

**Alpha Chi**  
Massachusetts Institute of Technology  
SILVER FOUNDERS CIRCLE  
Mike Repeta - 12  
DIAMOND TORCHBEARER  
Jerold S. Marks - 19  
GOLD TORCHBEARER  
Ezra Gavin Erb - 7  
John T. Kohl - 13  
Ellen D. Kranzer - 20  
SILVER TORCHBEARER  
David A. Holt - 23  
Joseph J. Kesselman Jr - 8  
TORCHBEARER  
Ernest C. Brogms - 14  
John B. Forrest Jr. - 12  
Alan M. Goldberg - 16  
Ping Huang - 2  
Kevin Mitsuo Iga - 5  
Michael G. Kozinetz II - 5  
William Ward Merrill - 14  
Martin Patin - 1  
Mariano A. Romaguera - 2  
Ronald S. Rosen - 20  
Kevin D. Stoddart - 8  
John R. Winkelman - 4  
Elizabeth Franci Wise - 13

**Alpha Psi**  
Lehigh University  
SILVER TORCHBEARER  
Paul M.H. Lienhardt - 10  
TORCHBEARER  
Kathryn Louise Franklin - 2  
James Phillip Nicholls III - 9

**Beta Beta**  
Michigan State University  
GOLD TORCHBEARER  
Ernest William Malkewitz Jr. - 9  
TORCHBEARER  
Walter J. Downes - 3  
Benjamin J. Evans - 5  
David Michael Eyl - 2  
Christopher J. Peters - 1  
Thomas W. Pfeifer - 6  
Clifford Rice - 1  
Erin Alana Stahl - 12

**Beta Theta**  
Univ of Wisconsin-Madison  
TORCHBEARER  
Arthur A. Schwenger - 14

**Beta Iota**  
New York University  
TORCHBEARER  
Christian M. Macy - 1

**Beta Mu**  
Southwest Missouri State University  
SILVER TORCHBEARER  
Paul J. Monda - 19

**Beta Omicron**  
University of Missouri/Rolla  
TORCHBEARER  
Edward J. Bradley Jr. - 4

**Beta Rho**  
University of Arkansas  
TORCHBEARER  
James Adam Bolain - 5  
Sandra Michelle Bolain - 1  
W. Brant Warrick - 1  
Michael P. Whitfield - 4

**Beta Sigma**  
Texas Tech University  
DIAMOND TORCHBEARER  
Harley H. Hannsz - 19  
GOLD TORCHBEARER  
Miles Allen Cato - 20  
Edward N. David - 8  
Kay Hairgrove Krenek - 17  
SILVER TORCHBEARER  
John T. Long - 2  
Harry B. Massingill Jr. - 14  
Cole Travis Robertson - 2

**TORCHBEARER**  
Susan Grubbs Aulbach - 1  
William C. Bomberger - 14  
Mark E. Bounds - 23  
Jana Fry - 1  
Rollin H. Hill - 5  
Mark S. Phillips - 12

**Beta Upsilon**  
Northwest Missouri State University  
GOLD TORCHBEARER  
Ronald J. King - 13  
TORCHBEARER  
Bruce R. Wake - 3

**Gamma Alpha**  
University of Washington  
DIAMOND FOUNDERS CIRCLE  
David B. Corning - 26  
TORCHBEARER  
Robert J. Hilliard - 1  
Kari E. Whitney - 3

**Gamma Beta**  
San Jose State University  
SILVER TORCHBEARER  
Robert Daly - 19  
TORCHBEARER  
Emilio Mel S. Gonzales Jr. - 10  
Janet Edith Olson - 6

**Gamma Gamma**  
University of California at Berkeley  
TORCHBEARER  
Donald L. Hoskins - 21

**Gamma Lambda**  
Clemson University  
SILVER FOUNDERS CIRCLE  
Jack A. McKenzie - 17  
GOLD TORCHBEARER  
Robert B. Carpenter - 22  
Douglas G. Ries - 5  
TORCHBEARER  
Kevin L. Dunn - 4  
Alva D. Gaskin Jr. - 4  
David W. Scott - 3  
Jay P. Zollicoffer - 5

**Gamma Mu**  
University of Evansville  
DIAMOND TORCHBEARER  
Frederick E. Shatara - 25

**Gamma Nu**  
University of Idaho  
TORCHBEARER  
Gary Eugene Strong - 11

**Gamma Xi**  
Rockhurst University  
TORCHBEARER  
Jennifer L. Corder - 11

**Gamma Omicron**  
Queens College  
SILVER TORCHBEARER  
Nathan J. Sambul - 4  
TORCHBEARER  
Steve Shapoff - 11

**Delta Alpha**  
University of Cincinnati  
TORCHBEARER  
Melody Ann Martin - 1

**Delta Beta**  
University of Oklahoma  
SILVER TORCHBEARER  
Christopher Duvall - 5  
TORCHBEARER  
Rodger A. Brown - 1  
James G. Crotty - 11  
Amy Elizabeth Kinnard - 8  
James W. Pate - 20

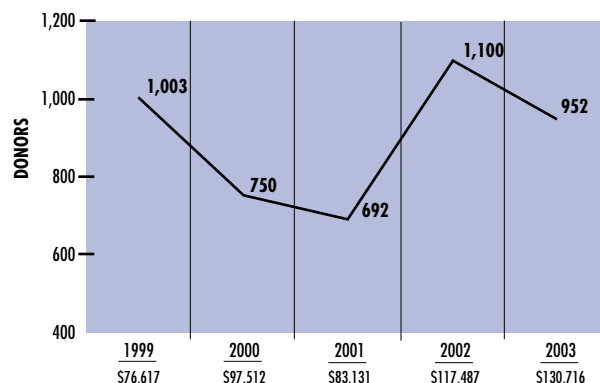
**Delta Gamma**  
Ohio University  
SILVER TORCHBEARER  
John R. Anderson - 18  
TORCHBEARER  
Sara Margaret Murdock - 3

**Delta Epsilon**  
Illinois Inst of Technology  
SILVER TORCHBEARER  
Ernest W. Grove - 13  
TORCHBEARER  
Dennis A. Duszak - 9

**Delta Zeta**  
University of Pennsylvania  
TORCHBEARER  
Charles Brooke Temple III - 1

## Annual Fund Donors

### FY1999-FY2003



Contributions from 952 donors to the Annual Fund exceeded \$130,000 in FY 2003, enabling the Fraternity to provide chapter support and deliver excellent programs. The challenge in FY 2004 is to continue an increase in Annual Fund donor and financial support. **Continue the legacy you began as a student...support the Annual Fund!** Please Note: FY 2000 & 2001 amounts include special 75th Anniversary gifts.

Ronald M. P. Lockyer - 3  
Julie C. Nishihara - 2

**Gamma Zeta**  
Georgia Institute of Technology  
GOLD TORCHBEARER  
McVay Moore - 4

**Gamma Theta**  
University of Colorado at Boulder  
SILVER TORCHBEARER  
Patrick E. Dougherty - 7  
Dennis H. Duncan - 11  
Charles P. Fisk - 25  
Lee Maurice Lierz - 11  
Robert L. Neher - 25  
TORCHBEARER  
Rhonda Ann Aven-Haggenmiller - 12  
Harold V. Eason - 15  
Shan Mitchell Hays - 2  
Wayne T. Hutchison - 13  
Charles Brooke Temple III - 4  
John M. Wetherington - 20

**Gamma Iota**  
Brooklyn College  
SILVER TORCHBEARER  
Arthur S. Leibowitz - 11  
Howard C. Naphtali - 7  
TORCHBEARER  
Arthur M. Schack - 13

**Gamma Pi**  
University of Michigan/Ann Arbor  
GOLD TORCHBEARER  
Margaret K. Katz - 14  
Susan Beth Meyer - 15  
SILVER TORCHBEARER  
David G. Hartman - 19  
TORCHBEARER  
Tristan Michael Pruss - 1

**Gamma Rho**  
University of North Texas  
GOLD TORCHBEARER  
Kari N. Logan - 1  
SILVER TORCHBEARER  
Andrew J. Luther - 3

**Gamma Phi**  
Western Michigan University  
GOLD TORCHBEARER  
Wade J. Love - 7

**Gamma Psi**  
University of Minnesota, Twin Cities  
SILVER TORCHBEARER  
Richard O. Niemann - 4  
TORCHBEARER  
William E. Cook - 15  
Keith W. Davidson - 15  
John C. Taylor - 6

**Delta Theta**  
University of Louisville  
TORCHBEARER  
Charles James Wetherell - 21

**Delta Iota**  
Mercer University  
TORCHBEARER  
Daniel E. C. Boone Jr. - 12  
Heather Alanna Lyons - 2  
James E. Miles - 11

**Delta Kappa**  
Emory University  
GOLD TORCHBEARER  
Linda G. Secrist - 2  
TORCHBEARER  
Michael L. Francis - 1  
Renee Beth Rittner - 3

**Delta Mu**  
Pittsburg State University  
TORCHBEARER  
Jolene Burke - 1  
William G. McGuire, Ph.D - 4

**Delta Nu**  
Yale University  
GOLD TORCHBEARER  
Lorin A. Jurvis - 18

**Delta Xi**  
Ball State University  
GOLD TORCHBEARER  
Mark Allen Stratton - 3

# 2003 TORCHBEARERS

- SILVER TORCHBEARER**  
Aasha A. Blakely - 3  
**TORCHBEARER**  
Donmichael J. Thompson - 2
- Delta Pi**  
*Trinity University*  
**TORCHBEARER**  
Natalie A. Bruce - 6
- Delta Rho**  
*Rutgers, The State University of New Jersey*  
**DIAMOND TORCHBEARER**  
Louis N. Triandafilou - 26  
**SILVER TORCHBEARER**  
Diana M. Dlouhy - 20  
Richard P. Horz - 4  
**TORCHBEARER**  
Alycia H. Bauch-Cantor - 1  
Lisa R. Russell - 9  
David W. Mutschler - 3  
Wayne W. Oberti M.D. - 17  
Betty Rauch - 17
- Delta Sigma**  
*University of Connecticut*  
**SILVER TORCHBEARER**  
Johanna Fleming - 6  
**TORCHBEARER**  
Theodore M. Colwell - 1  
John H. Driscoll Jr. - 7
- Delta Chi**  
*Texas A&M University-Kingsville*  
**TORCHBEARER**  
Ramon Samano Abarca - 1
- Delta Psi**  
*Eastern Illinois University*  
**TORCHBEARER**  
Keith Chester Johnson - 1  
Robert D. Mann - 4
- Delta Omega**  
*University of Houston*  
**DIAMOND TORCHBEARER**  
Jimmy Bartle Taylor - 11
- Epsilon Beta**  
*Central Michigan University*  
**SILVER TORCHBEARER**  
Paul F. Totzke - 16  
**TORCHBEARER**  
Sue A. Sudhoff - 4
- Epsilon Delta**  
*Central Connecticut State University*  
**TORCHBEARER**  
Kenneth J. Rosenberg - 1  
Brian J. Sullivan - 1
- Epsilon Zeta**  
*Rensselaer Polytechnic Institute*  
**SILVER FOUNDERS CIRCLE**  
Michael D. Beyer - 15  
**GOLD TORCHBEARER**  
D.J. Byrne - 2  
Joel P. Lord - 7  
Beth E. Robie - 16  
Andrew A. Rossbach - 17  
Grace L. Shuman - 18  
Paul A. Sicard - 25  
**SILVER TORCHBEARER**  
Ian Gregory Bilyj - 7  
Andy Braverman - 14  
Franklin David Brodsky - 3  
George C. Hassa Jr. - 9  
Gary S. Ide - 14  
**TORCHBEARER**  
Gary T. Flodin - 5  
Michael Edward Haber - 4  
Matthew Mark Hausmann - 4  
Enrique J. Lopez - 4  
Armen E. Mardiguian - 22  
David C. Panagrosso - 7  
Arthur G. Sanderson - 17  
Emilie Saulnier - 11  
Heather Joy Shenkman - 2  
George F. Spagna Jr. - 3  
Gregg M. Talewsky - 1
- Epsilon Lambda**  
*Michigan Technological University*  
**GOLD TORCHBEARER**  
Timothy L. Jenkins - 11  
**SILVER TORCHBEARER**  
Wendy Marie Lamothe - 9  
**TORCHBEARER**  
William P. Bowman - 14  
Gary John Lameris - 17  
Eric A. Wennersten - 9
- Epsilon Mu**  
*University of Maryland/College Park*  
**GOLD TORCHBEARER**  
Gerald Juan Berry - 22  
Dennis Michael Gurtz - 17  
**SILVER TORCHBEARER**  
Donald Louis Flynn - 13  
Marc Stephen Pearlman - 12  
Walter M. Schwenger - 13  
**TORCHBEARER**  
Steven Charles Chandler - 15  
Ralph M. Faust - 7  
James Craven Shutt - 4  
Russell Edwin Strand - 16
- Epsilon Nu**  
*SUNY - College at Oswego*  
**GOLD TORCHBEARER**  
Jon Andrew Gregurich - 8
- Epsilon Xi**  
*Colorado State University*  
**TORCHBEARER**  
Richard L. Burton - 8  
Vernon L. Lowrey - 9  
John A. Maxwell - 4  
Thomas M. Sproat - 5  
Robert G. Sturtevant - 4
- Epsilon Sigma**  
*SUNY at Buffalo*  
**SILVER TORCHBEARER**  
Floyd M. Seufert - 14  
**TORCHBEARER**  
Ronald P. Koch - 11
- Epsilon Chi**  
*Los Angeles City College*  
**SILVER TORCHBEARER**  
Irwin H. Gerst - 23
- Epsilon Psi**  
*Kent State University*  
**TORCHBEARER**  
Stephen B. Hodges - 2
- Epsilon Omega**  
*University of Mississippi*  
**GOLD TORCHBEARER**  
Alan K. Bridgewater - 26
- Zeta Alpha**  
*Bradley University*  
**GOLD TORCHBEARER**  
Allen J. Jacks - 5  
**TORCHBEARER**  
Brian R. White - 20
- Zeta Beta**  
*Virginia Polytechnic Institute & State University*  
**DIAMOND TORCHBEARER**  
Jerry L. Hulick - 22  
**GOLD TORCHBEARER**  
John H. Barrett - 24  
Edward E. Caviness Jr. - 7  
Michael Leahy - 9  
**SILVER TORCHBEARER**  
Paul V. Louie - 14  
**TORCHBEARER**  
Michael R. Babb - 3  
Patrick W. Burke CAE - 17  
James H. Gibbs - 7  
Lee T. Hirata - 8  
Frederick E. Johnston III - 19  
Richard V. Jonke - 3  
Holly Lynne McKinley - 1  
Richard R. Snedegar - 1  
John Styne Thrasher - 7  
Jennifer S. Wayne - 6  
Steven E. Wilson - 6
- Zeta Gamma**  
*Valparaiso University*  
**SILVER TORCHBEARER**  
Allen S. Fornwald - 17  
**TORCHBEARER**  
Leopold Hedbavny Jr. - 21  
Carl A. Herting - 1
- Zeta Delta**  
*Miami University*  
**SILVER TORCHBEARER**  
Michelle Sanford - 4  
**TORCHBEARER**  
Michael L. Curran - 4  
Carl Richard Larrick - 2  
Amy Beth Scalat - 5
- Zeta Epsilon**  
*Gustavus Adolphus College*  
**GOLD TORCHBEARER**  
Christopher J. Stromberg - 1
- TORCHBEARER**  
Todd Allen Mayer - 1  
Kathryn E. Zibell-Flinn - 2
- Zeta Theta**  
*Drexel University*  
**GOLD TORCHBEARER**  
E. Ross Forman - 22  
Warren C. Weidman - 15  
**SILVER TORCHBEARER**  
William R. Fromm - 15  
J. Richard Kiefer Jr. - 19  
**TORCHBEARER**  
Edward D. Reagan - 2  
Steven David Rellis - 11
- Zeta Iota**  
*Temple University*  
**SILVER TORCHBEARER**  
Raymond M. Czarnica - 15  
Kirk J. Thieroff - 20
- Zeta Kappa**  
*Bowling Green State University*  
**TORCHBEARER**  
Frederick F. Cunningham Jr. - 3  
David G. Farrand Jr. - 4
- Zeta Lambda**  
*University of Toledo*  
**TORCHBEARER**  
Matthew D. Bailey - 1  
Roger W. Schiller - 16
- Zeta Mu**  
*Catholic University of America*  
**DIAMOND FOUNDERS CIRCLE**  
John M. Russell - 19
- Zeta Nu**  
*Southern Illinois University at Carbondale*  
**DIAMOND TORCHBEARER**  
Philip M. Pfeffer - 19  
**SILVER TORCHBEARER**  
James D. Templeton - 15  
**TORCHBEARER**  
Frank J. Chlebek - 17  
Craig W. D'Ambra - 6  
Ronald S. Mezo - 4  
Richard A. Musgraves - 6  
Dean N. Ubik - 13
- Zeta Omicron**  
*California Polytechnic State University*  
**TORCHBEARER**  
Matthew R. Seals - 4
- Zeta Sigma**  
*University of Delaware*  
**SILVER TORCHBEARER**  
Robert L. Rossi - 6  
**TORCHBEARER**  
H. B. Ayars - 22
- Zeta Upsilon**  
*Boston University*  
**TORCHBEARER**  
Thomas O'Donovan Jr. - 17  
Valerie S. V. Petrushun - 1
- Zeta Phi**  
*Howard University*  
**TORCHBEARER**  
Donald A. Kiah - 6  
Kenneth E. Spann - 23
- Zeta Psi**  
*University of Oregon*  
**TORCHBEARER**  
Jennifer Suzanne Cornet - 3
- Eta Beta**  
*Simpson College*  
**TORCHBEARER**  
Jay A. Vertuno - 1
- Eta Iota**  
*Millersville University of Pennsylvania*  
**TORCHBEARER**  
Richard Dean Dutcher - 5
- Eta Kappa**  
*University of Wisconsin/Stout*  
**TORCHBEARER**  
Eric Scott Robinson - 1
- Eta Lambda**  
*University of Wisconsin/Eau Claire*  
**GOLD TORCHBEARER**  
Erica Roberts - 1
- Eta Mu**  
*Unica College of Syracuse University*  
**SILVER TORCHBEARER**  
Paul A. Wereszynski - 9
- Eta Sigma**  
*Illinois College*  
**GOLD TORCHBEARER**  
Philip J. Sallee - 20
- TORCHBEARER**  
Mathias M. Hollendonner - 13  
Douglas E. Miles - 7
- Eta Tau**  
*West Texas A&M Univ*  
**TORCHBEARER**  
David L. McInturff Ret. - 21
- Eta Phi**  
*American University*  
**SILVER TORCHBEARER**  
David R. Legge - 24
- Eta Psi**  
*California State University, Chico*  
**SILVER TORCHBEARER**  
Jennifer Anne Griggs - 3
- Theta Zeta**  
*University of New Hampshire*  
**SILVER TORCHBEARER**  
Timothy Main Boodey - 4  
Carla K. Moran - 2  
**TORCHBEARER**  
Richard Francis Droost Jr. - 5
- Theta Eta**  
*University of Health Sciences*  
**SILVER TORCHBEARER**  
Ronald W. Wadle - 3
- Theta Mu**  
*Vanderbilt University*  
**TORCHBEARER**  
Douglas L. Morency II - 2  
Nathaniel D. Tansky - 3
- Theta Nu**  
*Hamline University*  
**TORCHBEARER**  
Bruce G. Reichow - 1  
Thomas A. Roust - 17
- Theta Xi**  
*Parks College of St Louis University*  
**DIAMOND TORCHBEARER**  
William L. Conley Jr. - 2
- Theta Pi**  
*University of Indianapolis*  
**TORCHBEARER**  
Earl Brown Jr. - 11  
Gregory C. Crawford - 12
- Theta Rho**  
*Sam Houston State University*  
**TORCHBEARER**  
Eric T. Platzner - 12
- Theta Tau**  
*University of Texas at Arlington*  
**GOLD TORCHBEARER**  
Ronald A. Welch - 12
- Theta Upsilon**  
*Case Western Reserve University*  
**SILVER TORCHBEARER**  
Howard Wolf - 3  
**TORCHBEARER**  
David A. Hanneke - 1  
Francis W. Kearney - 2
- Iota Beta**  
*Pacific Lutheran University*  
**TORCHBEARER**  
Daniel D. Horsfall - 23
- Iota Lambda**  
*North Carolina State University*  
**GOLD TORCHBEARER**  
Allan Lyndal Butler - 15  
Steven T. Price - 17  
**SILVER TORCHBEARER**  
Alex R. Burkart - 22  
Gary G. Conrad - 12  
John M. C. Covington III - 3  
David M. Goddard - 27  
Susan A. Terry - 12  
**TORCHBEARER**  
Lauren D'Elia - 1  
Joseph H. Meadows Jr. - 18  
Glenn Scott Simmonds - 1  
Aimee Elizabeth Tilley - 5
- Iota Rho**  
*Florida State University*  
**TORCHBEARER**  
Dennis E. Nickle - 11
- Iota Tau**  
*Saint Olaf College*  
**SILVER TORCHBEARER**  
Christopher D. Peterson - 7  
Robert W. Snook - 7  
**TORCHBEARER**  
Paul C. Anderson - 7  
William J. Brinkman - 18



# 2003 TORCHBEARERS

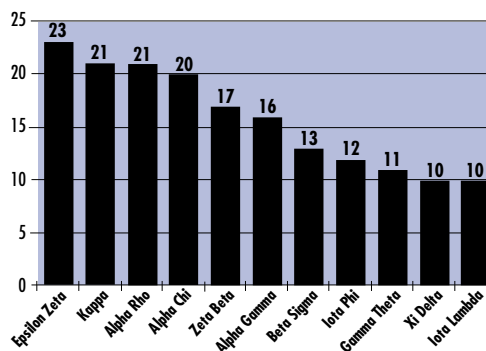
**Iota Phi**  
*University of California at Davis*  
**GOLD FOUNDERS CIRCLE**  
 Elizabeth Tom M.D. - 11  
**SILVER FOUNDERS CIRCLE**  
 Kelly H. Williams - 17  
**GOLD TORCHBEARER**  
 David A. Emery - 15  
**SILVER TORCHBEARER**  
 Teri Sheets - 10  
**TORCHBEARER**  
 Markus Dinkel - 5  
 Catherine K. Fujimori - 13  
 James R. Graeber - 2  
 Thomas J. Hoffman - 1  
 Joseph Gerard Monteleone - 10  
 Barry D. Nightingale - 2  
 Lawrence J. Putong - 10  
 Gary A. Vanderpol - 12

**Lambda Kappa**  
*Loras College*  
**TORCHBEARER**  
 Charles W. Isenhart - 14  
 John V. Peterson - 2  
**Lambda Lambda**  
*Shippensburg University of Pennsylvania*  
**TORCHBEARER**  
 Clarence A. Souders - 15  
**Lambda Mu**  
*California State University, Los Angeles*  
**DIAMOND TORCHBEARER**  
 Tom M. Kester II - 7  
**TORCHBEARER**  
 Jeffrey Schwartz - 13  
**Lambda Nu**  
*Duke University*  
**SILVER TORCHBEARER**  
 Mack T. Ruffin IV - 9  
**TORCHBEARER**  
 David C. Kaelber - 9

**SILVER TORCHBEARER**  
 Richard J. K. Stratford - 15  
**TORCHBEARER**  
 Brandon Jay Avella - 6  
 Michael R. Hryniak - 13  
 John F. Principe - 13  
 Donald J. Reilly - 3  
 Pamela K. Wojcicki - 14  
**Mu Delta**  
*University of Great Falls*  
**SILVER TORCHBEARER**  
 Dean M. Randash - 4  
**Mu Zeta**  
*San Francisco State University*  
**TORCHBEARER**  
 Christopher D. Saguisag - 5  
**Mu Eta**  
*Albright College*  
**TORCHBEARER**  
 Lynette Shaw - 1

**Nu Delta**  
*Lebanon Valley College*  
**GOLD TORCHBEARER**  
 Christopher Zebrowski - 3  
**Nu Epsilon**  
*Georgia Southern University*  
**TORCHBEARER**  
 Ellice Ann Fancher - 4  
**Nu Lambda**  
*Moravian College*  
**TORCHBEARER**  
 James E. Bissey - 11  
**Nu Nu**  
*Eastern New Mexico University*  
**DIAMOND TORCHBEARER**  
 Howard L. Henry - 5  
**GOLD TORCHBEARER**  
 Sara Jean Henry - 5  
**Nu Pi**  
*Minnesota State University, Mankato*  
**SILVER TORCHBEARER**  
 Donald J. Beckel - 15  
 Michael W. Suhr - 9  
**TORCHBEARER**  
 David L. Farmer - 23  
**Nu Rho**  
*College of William & Mary*  
**TORCHBEARER**  
 Joseph D. Beiras - 3  
 Rebecca Beth Finifter - 5  
 Sharon Lee Korp - 9  
**Nu Tau**  
*California State University-Northridge*  
**TORCHBEARER**  
 Steven E. Paul - 18  
**Xi Alpha**  
*Muhlenberg College*  
**TORCHBEARER**  
 Ellis Jacobs - 10  
**Xi Beta**  
*University of Nebraska at Kearney*  
**TORCHBEARER**  
 Charles J. Boettcher - 3  
**Xi Gamma**  
*Adams State College*  
**SILVER TORCHBEARER**  
 A. Ellwood Ervin Jr. - 19  
**TORCHBEARER**  
 George Ellwood Hedrick III - 19  
**Xi Delta**  
*Texas A&M University*  
**DIAMOND TORCHBEARER**  
 Stan Carpenter - 15  
**GOLD TORCHBEARER**  
 William E. Bammel Jr. - 25  
 Thomas Arthur Horan - 1  
 John L. Sempe - 4  
**SILVER TORCHBEARER**  
 Richard M. Scruggs - 14  
 Aaron James Wendt - 2  
**TORCHBEARER**  
 James C. Busby - 8  
 Sharron L. Cox - 2  
 Lauren Beth Faulkner - 6  
 Jeff D. Thomas - 10  
**Xi Zeta**  
*Rochester Institute of Technology*  
**GOLD TORCHBEARER**  
 David A. Turbide - 7  
**SILVER TORCHBEARER**  
 Ted L. Gross - 9  
 Christopher J. Hurley - 14  
**TORCHBEARER**  
 Victor R. Blake - 2  
 Paul Finkelstein - 1  
 Scott H. Sims - 11  
**Xi Iota**  
*Susquehanna University*  
**SILVER TORCHBEARER**  
 Eric R. Farman - 1  
**Xi Lambda**  
*Bloomsburg University of Pennsylvania*  
**TORCHBEARER**  
 Eugene E. Cioffi III - 17  
**Xi Omicron**  
*Tarleton State University*  
**TORCHBEARER**  
 Lance G. Zimmerman - 4  
**Xi Rho**  
*SUNY/College at Oneonta*  
**SILVER TORCHBEARER**  
 Harold A. Crawford - 5

## FY2003 Chapters with Most Donors



**Iota Chi**  
*Northern Michigan University*  
**TORCHBEARER**  
 Thomas H. Kilberg - 18  
**Kappa Beta**  
*Polytechnic University-Brooklyn*  
**TORCHBEARER**  
 Albert H. Park - 3  
**Kappa Delta**  
*Florida A & M University*  
**TORCHBEARER**  
 Samuel F. Sampson - 6  
**Kappa Theta**  
*Wake Forest University*  
**SILVER TORCHBEARER**  
 Franklin Donaldson - 8  
 Charles W. Kraftfoer - 1  
 Charles E. Webb - 7  
**Kappa Omicron**  
*University of Massachusetts*  
**GOLD TORCHBEARER**  
 David S. Mitchell - 13  
**SILVER TORCHBEARER**  
 Craig S. Donais - 10  
 Christian H. Fredericks III - 5  
**TORCHBEARER**  
 Jennifer H. (Blondie) Barnes - 2  
 Richard J. Keogh - 15  
**Kappa Sigma**  
*California State University, Sacramento*  
**SILVER FOUNDERS CIRCLE**  
 Eugene D. Melvin - 4  
**GOLD TORCHBEARER**  
 Kevin S. Simpson - 4  
**SILVER TORCHBEARER**  
 Todd Jeffrey Rehfuess - 12  
**TORCHBEARER**  
 Frank C. Taggart - 14  
**Lambda Alpha**  
*East Tennessee State University*  
**SILVER TORCHBEARER**  
 Bobby Joe Davis - 1  
 Julie Whitfield - 10

Phillippa Jane Miranda - 3  
 William B. Rugh - 28  
 Charles Brooke Temple III - 1  
 Brian D. Thiessen - 9  
**Lambda Xi**  
*Univ of Texas-Pan American*  
**TORCHBEARER**  
 George L. Finch - 19  
**Lambda Omicron**  
*West Virginia University*  
**DIAMOND TORCHBEARER**  
 David R. Keely - 4  
**GOLD TORCHBEARER**  
 Fred C. Heismeyer III - 18  
**SILVER TORCHBEARER**  
 James S. Manning - 17  
**TORCHBEARER**  
 David L. Andres - 4  
 Patricia L. Esposito - 10  
 Cynthia M. Gunn - 2  
 Chip K. Shepherd Jr. - 14  
**Lambda Rho**  
*Augustana College*  
**TORCHBEARER**  
 Sarah Hamel - 3  
**Lambda Phi**  
*Eastern Michigan University*  
**SILVER TORCHBEARER**  
 John D. Anderson - 13  
 Scott J. A. Merritts - 4  
**TORCHBEARER**  
 Christopher A. Gellash - 6  
 Tammy Lynn Sindlinger - 6  
 Steve Sindlinger - 6  
**Lambda Omega**  
*California University of Pennsylvania*  
**TORCHBEARER**  
 Amy Lynne Beck - 2  
 Kathleen L. Habel - 1  
**Mu Alpha**  
*Georgetown University*  
**SILVER FOUNDERS CIRCLE**  
 Gerald A. Schroeder - 14  
**GOLD TORCHBEARER**  
 Thomas R. Liebermann - 23

**Mu Theta**  
*Luther College*  
**GOLD TORCHBEARER**  
 Michael K. Musgrave - 15  
**Mu Mu**  
*Oglethorpe University*  
**SILVER TORCHBEARER**  
 Laura K. Fowler - 7  
**TORCHBEARER**  
 Kenneth P. Davis - 16  
 Steven Christopher Totino - 1  
**Mu Nu**  
*Western Illinois University*  
**TORCHBEARER**  
 Dale R. Jackson - 14  
**Mu Xi**  
*High Point University*  
**TORCHBEARER**  
 Edward A. Grandpre' - 3  
**Mu Omicron**  
*Clarkson University*  
**GOLD TORCHBEARER**  
 E. Edward Bassett III - 3  
 Karen L. Bassett - 1  
**SILVER TORCHBEARER**  
 Duane E. Jones - 8  
 Craig C. Muckle - 12  
**TORCHBEARER**  
 James D. Myers - 11  
**Mu Tau**  
*West Virginia University Institute of Technology*  
**TORCHBEARER**  
 Craig R. McGarrath - 11  
**Nu Beta**  
*Hope College*  
**TORCHBEARER**  
 Michael Carpenter - 22  
**Nu Gamma**  
*Texas State University - San Marcos*  
**TORCHBEARER**  
 Thomas G. Barnhill Sr. - 17

# 2003 TORCHBEARERS

**TORCHBEARER**  
Allison M. Myers - 6  
Anne Ng - 3  
Michele L. Nunes - 1

**Xi Psi**  
Western Kentucky University  
**SILVER TORCHBEARER**  
Steven G. Adams - 17

**Omicron Iota**  
Worcester Polytechnic Institute  
**DIAMOND TORCHBEARER**  
Yusef Albader - 1  
**TORCHBEARER**  
Joseph A. Ferrari Jr - 9

**Omicron Sigma**  
Saint Peter's College  
**SILVER TORCHBEARER**  
Gerald P O'Connor - 1

**Omicron Tau**  
Alma College  
**DIAMOND TORCHBEARER**  
James L. Chandler - 1

**Omicron Upsilon**  
West Chester University of Pennsylvania  
**TORCHBEARER**  
Michael J. Ercole - 15

**Omicron Phi**  
University of Richmond  
**SILVER TORCHBEARER**  
Jodie Patricia Eicher - 4  
**TORCHBEARER**  
Carol M. Green - 5  
Donald F. Luttrell - 6

**Pi Beta**  
University of Dubuque  
**GOLD TORCHBEARER**  
Bob Barkhurst - 14

**Pi Gamma**  
Baldwin-Wallace College  
**TORCHBEARER**  
Dwight Adrian Leedy - 19

**Pi Zeta**  
Tuskegee University  
**TORCHBEARER**  
Willie M. Burnett - 6

**Pi Eta**  
Loyola University of Chicago  
**GOLD TORCHBEARER**  
James H Johnson Jr - 1

**Pi Tau**  
St Peters College (Eves)  
**TORCHBEARER**  
Aldo P. Antola - 6  
Robert R. Tarantula - 3

**Rho Gamma**  
California State University, Long Beach  
**TORCHBEARER**  
Robert J. Hartsuyker - 11

**Rho Delta**  
University of Rhode Island  
**TORCHBEARER**  
Louis H. Maynard - 4

**Rho Pi**  
University of California at San Diego  
**SILVER TORCHBEARER**  
William E. Colburn Jr. - 6  
Thomas A. Larsen - 12

**Sigma Nu**  
Delaware Valley College  
**SILVER TORCHBEARER**  
Matthew Fred Schieferstein - 5  
**TORCHBEARER**  
Michael A. Semenik - 1

**Sigma Xi**  
University of Maine  
**DIAMOND TORCHBEARER**  
Joel A. Lake - 10  
**SILVER TORCHBEARER**  
Robert S Laviolette - 4  
Michael J. Mirisola - 12

**Sigma Phi**  
University of Notre Dame  
**TORCHBEARER**  
Daniel Rauch - 17

**Sigma Chi**  
Miami-Dade College  
**SILVER TORCHBEARER**  
Gary Joseph LaBelle - 5

**Tau Alpha**  
Davis & Elkins College  
**TORCHBEARER**  
Conway Li - 6

**Tau Beta**  
Appalachian State University  
**TORCHBEARER**  
Damon J. Miltner - 1

**Tau Epsilon**  
Tennessee Technological University  
**TORCHBEARER**  
Ron Estes - 17

**Tau Zeta**  
Texas Southern University  
**TORCHBEARER**  
John Henry Allen - 2

**Tau Lambda**  
Rose-Hulman Institute of Technology  
**GOLD TORCHBEARER**  
Cary Laxer - 14  
**TORCHBEARER**  
John L. Emley - 4  
John Howard Havron - 10  
Larry A. Wood - 15

**Tau Omicron**  
Indiana University Purdue University-Indianapolis  
**SILVER FOUNDERS CIRCLE**  
Robert J. London - 2  
**SILVER TORCHBEARER**  
Robert M. Coop - 4

**Tau Upsilon**  
University of Wisconsin-Platteville  
**SILVER TORCHBEARER**  
Jeffrey C. Ingebritsen - 6

**Tau Chi**  
Winston-Salem State Univ  
**TORCHBEARER**  
Clarence J. Snuggs - 2

**Tau Omega**  
Ocean County College  
**TORCHBEARER**  
Jay Gold - 6

**Upsilon Beta**  
Saint Francis University  
**TORCHBEARER**  
John T Flanagan Jr - 1

**Upsilon Delta**  
Kean College of New Jersey  
**GOLD TORCHBEARER**  
James L. Pittman - 13  
David R. Rieger - 12

**Upsilon Nu**  
University of North Carolina at Wilmington

**TORCHBEARER**  
Kimberly Daly - 17  
Debbie P. Donchey - 3  
Darren M. England - 15

**Upsilon Phi**  
Ind Univ-Purdue U at Ft Wayne  
**GOLD TORCHBEARER**  
Mark A. Ramser - 21

**Phi Gamma**  
Texas Lutheran University  
**SILVER TORCHBEARER**  
William Kuhfal - 11

**Phi Epsilon**  
Maine Maritime Academy  
**TORCHBEARER**  
John T. Lyons - 10

**Chi Gamma**  
James Madison University  
**TORCHBEARER**  
Elbert G. Espanol - 9  
Anna Lisa Alzona Ramos Schneider-4  
William Stanley Stetson III - 3

**Chi Zeta**  
University of Tennessee at Martin  
**TORCHBEARER**  
Mark H. Bell - 4  
Dennis K. Clark - 2

**Chi Lambda**  
Elizabeth City State Univ  
**TORCHBEARER**  
Clifford E. Patterson - 2

**Chi Mu**  
Henry Ford Community College  
**SILVER FOUNDERS CIRCLE**  
Bobby M. Hainline - 23

**Chi Sigma**  
Allegheny College  
**TORCHBEARER**  
Gilbert Brucken - 4

**Psi Delta**  
University of Maine at Machias  
**TORCHBEARER**  
James R. Kowalsky Jr. - 9

**Psi Omega**  
University of Central Florida  
**SILVER TORCHBEARER**  
Michael Jay Metler - 4  
Michael F. Volpe - 11

**Omega Mu**  
Clarion University of Pennsylvania  
**SILVER TORCHBEARER**  
Richard Alan Martin - 13

**TORCHBEARER**  
James L. Sedlak - 5

**Alpha Alpha Xi**  
University of the Pacific  
**GOLD TORCHBEARER**  
Craig Richard Tanner - 7  
**SILVER TORCHBEARER**  
Yvonne Marie Duttreux - 3  
Eileen Sullivan McGee - 10  
Fred Nicholas Timm IV - 6  
**TORCHBEARER**  
Kristin Knudson Harris - 1  
Kimberlee C. Yee - 6

**Alpha Alpha Pi**  
Westminster College  
**TORCHBEARER**  
Sallie Fellague - 18  
Karin P. Goodman - 15

**Alpha Beta Delta**  
Widener University  
**TORCHBEARER**  
Robert J. Carr Jr. - 12

**Alpha Beta Epsilon**  
Univ of Arkansas-Monticello  
**GOLD TORCHBEARER**  
Joyce A. Heismeyer - 18

**Alpha Beta Zeta**  
Radford University  
**TORCHBEARER**  
Constance Mills Beauchamp - 1

**Alpha Beta Mu**  
Grove City College  
**TORCHBEARER**  
Gregory P. Flinn - 15

**Alpha Beta Xi**  
SUNY/College at Geneseo  
**GOLD TORCHBEARER**  
Louis A. Sapirman - 12  
Nadine Sapirman - 12  
**TORCHBEARER**  
Cynthia O. Jones - 6

**Alpha Beta Chi**  
SUNY/College at Plattsburgh  
**TORCHBEARER**  
Chuck R. Devita - 5

**Alpha Beta Omega**  
Old Dominion University  
**TORCHBEARER**  
Andrea Maria Dalton - 2

**Alpha Gamma Alpha**  
Dickinson College  
**TORCHBEARER**  
Joanne Lipa - 13

**Alpha Gamma Iota**  
University of the Sciences in Philadelphia  
**TORCHBEARER**  
Shawn Joseph Boyle - 2  
Erica Christine Kobylinski Phar - 5  
Dawn Elizabeth Wagoner - 5

**Alpha Gamma Kappa**  
Southwestern University  
**SILVER TORCHBEARER**  
Derek W. Christian - 7

**Alpha Gamma Lambda**  
Albion College  
**SILVER TORCHBEARER**  
Jennifer L. Bramble - 3  
Louise J. Ruiter - 9

**Alpha Gamma Rho**  
Florida Institute of Technology  
**TORCHBEARER**  
Virgilio A. Gascon, Jr. - 1

**Alpha Gamma Chi**  
Frostburg State University  
**TORCHBEARER**  
Candace A. Lohr - 6

**Alpha Delta Eta**  
SUNY at Albany  
**TORCHBEARER**  
Jamey Eric Kohn - 3

**Alpha Delta Xi**  
Christopher Newport University  
**TORCHBEARER**  
James A. Kolling III - 1

**Alpha Delta Rho**  
Northern Arizona University  
**TORCHBEARER**  
Christina A. Ceppo - 4

**Alpha Delta Tau**  
Nova Southeastern University  
**GOLD TORCHBEARER**  
Michael Rogero Brown - 5  
Joel E. Natt - 7

**Alpha Epsilon Epsilon**  
Henderson State University  
**TORCHBEARER**  
Kathryn Sue Whitfield - 3

## APO NATIONAL VOLUNTEER CONFERENCE

**August 12-15, 2004**  
**Hilton Garden Inn  
& Hartman Conference Center**  
**Independence, MO**

### Who Should Attend?

- All Alumni Interested in Volunteering
- All Appointed or Elected Leaders
- All Regional and Sectional Staff
- All Members of National Committees
- All CPW Staff Members
- APO LEADS Presenters/Facilitators

Visit [www.nvc.apo.org](http://www.nvc.apo.org) for more information.

# Congratulations to APO's 2003 New Life Members

Scott Adamietz	Karen Lynn Carlson	Sara H. Gale	Kimberly D. Jacob	Catherine Marshall Long
Jyoti Aggarwal	Bradley P. Carlton	Michael Ryan Gallagher	Frederick Jaecklein	Sarah E. Long
Catherine A. Agnew	Kristen R. Carter	Shannon A. Gallagher	Stephen H. James	Steven Michael Longstreet
Hannah L. Aldridge	Emily Maria Carvill	Allison Diane Galland	Deanna Lynn Janda	Melissa Ann Lott
Marissa Amy Alonsagay	Laiza Casas	Carolynn Richardson Gebo	Julia Marie Jawor	Jennifer Lida Louie
Jared Timothy Amos	Michael Man Hei Chan	Caroline M. Geddes	Laura Dean Jeffreys	Ebony LaShay Love
Katie Anderson	Kim My Chau	Lisa Gentry	Katherine Jezik	Kevin M. Lowe
Melody Jean Anderson	Nicole Chernowetz	Robert Sean Gerrish	Amanda Lea Johnson	Aojing Lilly Lu
Patricia Marie Anderson	Natalia Maria Chilcote	Leya M. Ghalambor	Gregory Paul Johnson	Charles Edward Luckett
Ryan Michael Anderson	Geoffrey Chu Chin	Lesley Gibert Christopher	Jacob R. Johnson	Allison Ludlow
Allyson Lynne Anding	Ronald Baker Chin	T. Gier	Lindsay Anne Johnson	Matthew E. Lukasiewicz
Erik Alf Andreassen	Sharon R. Christie	Joseph Wayne Gill	Timothy Dean Johnson	Bob Luman
Jason Robert Aschiero	Carrie Lynn Christoph	Stanley R. Gin	Stephen E. Jones	Jacqueline J. Luri
Angela N. Atkins	Jeffrey Allen Cicerchi	Emmanuel L. Glick	Thomas Nathan Jones	Cathy Chui-Man Ly
Jesus Manuel Ayuso-Tapia	Kendal Woolf Clark	Cory Michele Goleman	Caitlin Carman Judd	Janele R. Lynn
Nicole M. Babilya	Vicki Clark	Jasmine M. Good	Matthew A. Jura	Carlos Ahin Macias
Alison Rae Baird	Erin K. Cleary	Eric Goossens	Sartaj Mohammed Kadiwala	Martha Monyka Macias
Stephanie Summer Barille	Katye L. Cline	Analiesia M. Gosnell	Rebecca Lynn Kakos	Gerard F. Mackle
Holly Jessica Sue Barnes	Ian Thomas Cochran	Scott David Gottleber	Anne M. Kapellen	Gregory S. Makin
Janise K. Barnes	Megan E. Cochran	Alexander A. Granado	Katherine P. Karjalainen	Meredith Bree Makofsky
Alexander J. Bartlett	Eli Nathan Cohen	Lindsey Marie Gray	Leah Joan Katz	Kaitlin Engle Mallouk
Scott William Barton	Joanna Lee Colosimo	Katharine E. Greer	Laura Elizabeth Keel	Tonya Yvonne Malone
Constance Mills Beauchamp	Karla Gail Conn	Nicole Marie Gregorio	Frances Nell Keith	Kate B. Manhart
Carrie Jane Benefield	Jennifer L. Connelly	Amanda Rose Greiner	Sarah R. Kelch	Angela Manjarres
Sarah Bennett	Ronald A. Contorno,	Nathaniel Cristopher	Shana Lynn Kelley	Stacy A. Manning
Julia M. Benscoter	Melonie Tanya Coutts	Gualberto	Caroline Marie Kelly	Pamela A. Marchetto
Adam Lee Berig	Matthew Rex Cox	Jessica Gisele Guerrero	Kathleen Anne Kelly	Cara Joy Martin
Christina M. Bernardis	Joseph E. Cristanus	Christina Lynn Guidroz	Krystle Lynn Kennedy	Kristen Elise Martin
James H. Berry	Melanie Elizabeth Culp	David M. Gyza	Lisa Michelle Kennedy	Rebecca Dawn Martin
Jon William Berry	Christopher Thomas Czekanski	Dawn Marie Halferty	Robert Jordan Ketterer	Sean Patrick Mason
Jamie S. Bielecki	Jason Paul Daco	Leslie Gabrielle Hamilton	Carol Sterling Kidd	Jennie M. Mast
Betsy Blackie	Syreeta M. Daniels	Stephen J. Hancock	Darrell Kirby	Frances M. Maston
Karen V. Bleck	Aleeshaia Jhontila Danner	Gretchen Marie Handfelt	Emily Kishel	Anthony Joseph Masucci
Steven David Bluijjs	Bethany Ann Daubach	Tony Hannides	Kristina Klaus	Ronald Mathews
Tiffany Marie Blum	Amanda Lynn Daughters	Daniel Eric Hansen	Hank J. Klein	Anne Mattessich
Joshua A. Boehm	Nathan Robert Davis	Jessica S. Harding	Anna Klimova	Paul J. Matthews
Kelly Elizabeth Bogart	Nicole Marie Davis	Crystal Panique Hardy	April Marie Knehr	Karen M. Maxson
Cortland Bolles	Bridget Renee Dean	Aaron Lee Harris	James A. Kolling	Sara Ann Maxwell
Thomas John Bomba	John W. Dean	Stephanie Nicole Harris	Christine A. Komiskey	David Corey Mayer
Jodi Lynn Bonner	Mark William DeLong	Maura Harty	Richard I. Koval	JoEllen McBride
Paula D. Bonnin	Karl Hart Dickason	Jennifer Marie Harvey	Dennis Don Kramp	Devon Grace McCabe
Becca Ellen Booher	Andrea Marie DiRico	Amanda Sue Hassenbusch	Hervie C. Krodel	Danielle McCann
Christine Elisabeth Boston	Katherine C. Dolter	Caren Elizabeth Hauptvogel	Angela Christene Kusaj	David C. McCluskey
Thomas James Botelho	Ellen Kathleen Dooley	Clark Aaron Haynes	Sheila V. Kusnoor	Andrew James McCracken
Kathryn Julia Boulware	Michael Elmer Dotterer	Jennie Lynne Heger	Richard Robert Lack	Christina M. McDermott
Renee Anne Bourgeois	Adam C. Doverspike	Emily Dawn Heine	Andrea Laiewski	Masseeha McDonald
Ann Marie Boyak	Michael Loudon Dow	Brandon Michael Lee	Fay Ellen LaManna	Michael Anton McDonald
Joanne Boyanowski	Stephanie Marie Downing	Henderson	Elayna Martese Lambert	Nicole McDorman
Johnny Boykings	Colleen Heather Anne Doyle	Bryan Herger	Kevin Michael Landesman	James Matthew McMichael
Isaac Brail	R. Ryan Draving	Joshua Israel Hernandez	Mandy Jo Lane	Miranda Joanne McMillin
Joshua Patrick Brien	Will Drinkwater	Meghan Corinne Heyes	Lauren Elizabeth Langford	Malcolm S. Melvin
Krista Ann Briggs	Elizabeth Grace Durfee	Kelly Marie Higginbottom	Megan Elizabeth Lantz	Matthew R. Meunier
Marvin Broadwater	Elizabeth Anne Eder-Moreau	George James Hill	Brenda Lee Larson	Sean Jeffrey Meyers
Robert Andrew Brooks	Jennifer Marie Elkowitz	Melisa Kimberly Hill	Stephanie L. Larson	Elizabeth May Michael
Amanda Nicole Brown	Brittany Dawn Epstein	Melissa I. Hixson	Kimberly Tricia Lau	Tammy Joyce Mierzwa
Colin Robert Brown	James W. Esson	Julie Ann Hofsommer	Melissa Layher	Heidi A. Mikolajczyk
Peter Samuel Brown	Jennifer Elena Estrada	Lauren C. Hood	Jennifer Gee Yuen Lee	Molly Ann Miller
Sharon Wilson Brown	Nicole Farrell	Teisha-Vonique Shereece Hood	Stephanie Leeson	Dedrick G. Mills
Stephanie I. Brown	Brooke Lyn Felton	Phillip A. Hooper	Mary-Catherine Christina-	April E. Milne
James E. Bryan	Renee Alison Fish	Katharine L. Hopkins	-Elaine Leewis	Erica Leigh Milone
Julia Diane Burdakin	Mary Elizabeth Fishburn	Katherine Ruth Houle	Robert D. Legander	Lauren Ann Mindermann
Jolene Burke	Lee C. Fisher	Lela Ann Hubbard	Jennifer Lelinski	Rachel Lynn Minich
Sandra L. Burke	Melissa Jo Fleming	Michael Charles Hubbard	Lori Georgianna Leniart	J. Allan Mitchell
Robert J. Burkholder	Eliu Fontanez	Robert Kilmer Hunter	Daniel Lenski	Ryan Nathaniel Mitchell
Tara Michelle Burnett	Alexandra Cassiopeia Forte	Eileen Kaori Inagaki	Lauren Elizabeth Little	John Michio Miyahara
Olivia Catherine Busuttill	Pamela L. Fritz	Berneta Louise Ingram	Robert E. Lockard	Louis Gilles Monville
Alexandra Denise Byers	Angela K. Fuhrmeister	Kaycee Jeri Inwood	Stephanie Rebecca Logan	Megan A. Moody
Scott A. Cariello	Douglas Fuller	Chelsea S. Jackson	Sean Joseph Lohmar	

continued on page 16

# Congratulations to APO's 2003 New Life Members

Catherine B. Moore  
Christopher R. Moore  
Karen Elizabeth Morey  
Alaina Lynn Morgan  
Melissa Morgan  
John C. Moring  
Jonathan Joseph Morse  
Kimberly Jill Moseley  
Melinda Kay Mueller  
William P. Mueller  
Marshall Crit Mullins  
Catharine Dynae Munden  
Walter Berry Murray  
Jai Nangia  
Alissa Marie Nelson  
Christina Lynn Nelson  
Grant Thomas Nelson  
Gregory Carlos Nelson  
Pamela L. Neumann  
Herman K. Ng  
Heath P. Novak  
Fawn Renee Oakes  
Robert O'Boyle  
Eric O'Brien  
Michael Shane O'Dell  
Margaret Elaine Oehler  
Brian Lee Olberding  
Mandy Stephanie Oliden  
Maureen Therese Olle  
Gina S. Opferman  
Megan Rae Osborne  
Katya Elizabeth Ouchakof  
Rebecca L. Oxenrider  
Leslie A. Pack  
David James Palomino  
Guzman  
Maria E. Pantoja  
Alyssa Joy Pasquale  
Devang J. Patel  
Margaret Elizabeth Peck  
Nicholas Mark Pedersen  
William Donald Pelkey  
Amanda Beth Penn  
William Jesse Pennington  
Jesus Perez  
Jeremiah Mathew Perotti

Kyle Auston Peterson  
Wendy S. Pfeffer  
Richard Clifton Phinney  
Deanna Pietrzak  
David C. Piga  
Timothy Pipkorn  
Jacqueline Marissa Pittel  
Jason Michael Planakis  
Mason Montgomery Powers  
Scott Alan Powers  
Elvin Tyrone Price  
Ryan L. Price  
Brian Keith Privett  
Steven A. Proctor  
Lisa Dionne Pryor  
William A. Pryor  
Amanda Elizabeth Pumfrey  
Justin Ryan Pupillo  
Erin Anne Radford  
Grace E. Randolph  
James David Rene Raskob  
Kelan Anthony Rathbun  
Michael J. Razer  
Lauren Rea  
Ross Alexander Rearick  
Melvin Clifford Redeker  
Patricia A. Reeder  
Michael James Reilly  
James Michael Renner  
Sheldon Anderson Ressler  
Kristin Alanna Rice  
Christopher J. Riley  
Robert W. Rion  
Laura Christina Rios  
Adam Walter Ritchie  
Walter F. Roberson  
Harry Robinson  
Amy Marie Roder  
Jeffrey William Rodger  
Arthur Thomas Rollin  
Elizabeth Marie Rollins  
Joseph D. Romano  
Jennifer Marie Roscetti  
Kimberly Ann Rosendorf  
Benjamin Noah Ross  
Joseph Michael Rusnak

James Kei Russell  
Kevin M. Rutherford  
Andrew S. Ryals  
Robert Allen Rymal  
Peter John Sablich  
Rodger Salzman  
Elizabeth Laura Sands  
Megan Diane Sands  
Gloria Esther Santana  
Kate Sarata  
Ellen Saunders  
Carrie L. Scharf  
Jennifer Scheipers  
Nicole E. Schlaefli  
Kelly Marie Schneider  
Steve Allen Schnurbusch  
Barbara Schrom  
Caleb Grove Schultz  
Nicole Danielle Schwartz  
Thomas William Scott  
Anthony J. Scully  
Daniel J. Seals  
Erika Maria Sehne  
Jonathan W. Seiler  
Mehvish Shah  
Shiva Sharma  
Ebony Christine Shaw  
Nicole Shere Sheats  
Laurie Sara Sheen  
Jennifer L. Shemory  
Lee Min Sheng  
Elvis Shields  
Paul Shih  
Amanda B. Shockey  
James Aaron Sikorski  
Glenn Scott Simmonds  
Talia Noelle Simonds  
Philip C. Slocum  
Heather M. Smith  
Kathryn Kaye Belinda Smith  
Kendria E. Smith  
Patrick Thomas Smith  
Rebecca Marlette Smith  
Stefanie M. Snider  
Christopher Peter Sorelle  
Jeffrey L. Sparks

Trevor Spence  
Cody Ryan Spencer  
Jennifer Marie Spencer  
Stephanie LuAnn Spirer  
John H. Sproule  
Marina E. Stanbery  
Rebecca A. Staudt  
Anna Christina Stelzenmueller  
Wendell Stewart  
Stephen Craig Stokes  
Timothy Michael Stoll  
Linda Stoughton  
Tarra Jean Strauss  
Amy Elizabeth Street  
Matthew Paul Sullivan  
Alexis N. Sumner  
Gerry Atienza Sustal  
Gena Sutton  
Jone Margaret Swanson  
Amanda O. Sweetser  
James Tate  
Ashleigh L. Taylor  
Crystal Lynn Taylor  
James D. Thangarajan  
Christine Marie Tharp  
Tiffany Nicole Thomas  
Troy L. Thomas  
Tara Lynn Thomasson  
Kyle Joseph Thrapp  
Jennifer Suzanne Thurin  
Ben L. Delose Tibbs  
Robert Fenton Tinnell  
Nyram Tiv  
Jennifer C. Tobin  
Andres Javier Rodriguez Torres  
Melissa Torres  
Douglas L. Touchette  
Anthony Toy  
Christina Ann Trahanas  
David Tran  
Vicky Tran  
Elizabeth Megan Trigalet  
Jennifer L. Tuggle  
Jennifer Tugman  
Pei-Ann Andrea Tzeng

Vincent Daniel Vasquez  
Kamini D. Verma  
Michael Villarreal  
Larry Wilson Wagner  
Joseph Bernard Walker  
Tony Dewayne Walls  
Michael L. Ward  
Erica Teresa Warner  
Maretha A. Watkins  
David Matthew Weaver  
Robert William Webb  
Megan Lynne Weimer  
Paulabeth Weinberger  
Abbye Alyse Weingram  
Lauressa Maye West  
Loren Allen Whisler  
Matthew Lee Whitaker  
Jared David White  
Robert W. Wightman  
Wesley D. Wightman  
Colleen M. Wilkinson  
Ryan Matthew Willhite  
Donald A. Williams  
Symya Ynya Williams  
Tadd Owen Williams  
William Wills  
Travis Wayne Wilson  
Kelly Elaine Wiltsee  
Cayela JoLynne Wimberly  
Anita L. Windon  
Jessica L. Wininger  
Tracy L. Winter  
Amber E. Winters  
Patrick Wong  
Vincent Wong  
Raymond E. Wood  
Jo Anne Wright  
Kimberly J. Wright  
Crystal Wyman  
Amanda Beth Yeargan  
Scott C. Young  
Jacalyn Y. Yuan  
Lahoma L. Zhonnie  
Jennifer Lynne Ziegler  
Megan Elizabeth Zlatos

FOR THE CURRENT CALENDAR OF EVENTS, VISIT [WWW.APO.ORG](http://WWW.APO.ORG)

**moving?**

**new address**

Name

Address

City State ZIP  
( )

Area Code Phone Number

E-Mail Address

MAIL TO: Alpha Phi Omega • 14901 E. 42nd Street • Independence, MO 64055

**Alpha Phi Omega**  
14901 E. 42nd Street  
Independence, MO 64055

Non-profit Org.  
U.S. Postage

**PAID**

SHAWNEE MISSION, KS  
Permit No. 366