

TORCH AND TREFOIL

Published by
Alpha Phi Omega

Vol. 12

KANSAS CITY, MO., DECEMBER, 1937

No. 3

BETA GAMMA CHAPTER INSTALLED AT CENTRAL Y. M. C. A. COLLEGE

Degree Team of Sigma Chapter Performs the Ceremony

Its "campus" is three floors of a loop building in Chicago and it has no football team; yet its school spirit is high and every student is proud of his school. Its faculty is composed of skilled experts in their particular fields, and its student body is made up of the finest young men and women anywhere.

This is an impression of Central Y. M. C. A. College where Alpha Phi Omega's fifty-first chapter was installed last June 6. The enthusiasm which the 25 active charter members have for this Fraternity is challenging.

The Bismarck Hotel in Chicago was the scene of the installation. Brother C. M. Finnell, personally appointed by the National President, served as chief installing officer. He was assisted by Sidney B. North, National Secretary; Dr. Edwin C. Johnson, National Treasurer; and the degree team of Sigma Chapter of Northwestern University.

The chapter delegations in attendance (Continued on Page 6)

THESE BROTHERS BRING HONOR TO APO AT MILWAUKEE



Robert Bowman



Willard Shinnars



Ottmar Bodemar

PHI CHAPTER IS "TOPS" IN ACTIVITIES AND SERVICE

Wallace O. Lee Trophy Awarded to Syracuse for 1936-37

There is a "best chapter" in every fraternity; and in Alpha Phi Omega, Phi Chapter was unquestionably the best and most active throughout the academic year 1936-37. In recognition of this superiority, the National Executive Board has awarded its achievement trophy, named in honor of Brother Wallace O. Lee, Alpha Tau, to the Syracuse Chapter for this year.

(Continued on Page 6)

THREE UPSILON MEMBERS IN "HONOR TEN"

The highest recognition that can be achieved by seniors at Milwaukee State Teachers College is to be selected in the Honor Ten, a group chosen annually by a faculty committee for their high scholarship and participation in various college activities. Of the group which composes the twenty-second annual Honor Ten, elected at graduation time last spring, three were members of Upsilon Chapter of Alpha Phi Omega. Our honored brothers are listed below, with their activities:

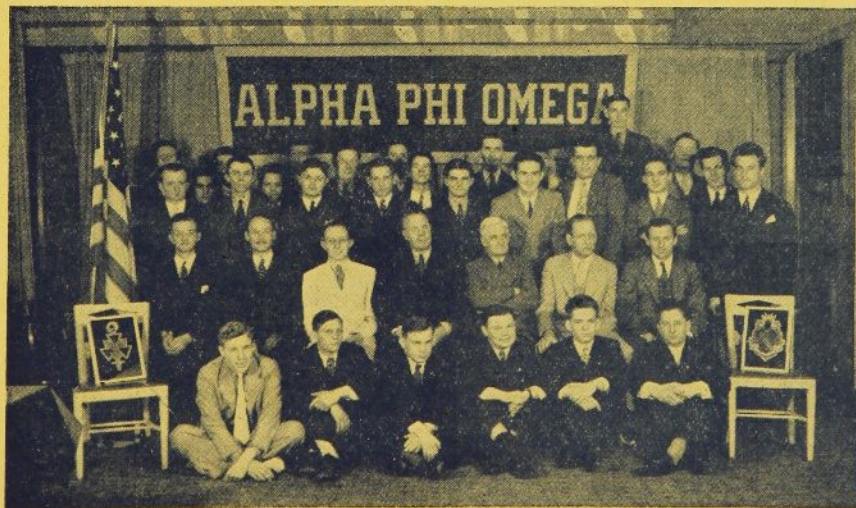
Ottmar Bodemar: Secondary division, stock company, president of the Senior Class, Alpha Phi Omega, Delta Chi Sigma, Beta Phi Theta.

Robert Bowman: Secondary division, sports, city, managing and executive editor of the Echo Weekly, copy editor of student directory, Alpha Phi Omega, Delta Chi Sigma.

Willard Shinnars: Elementary division, vice president of the Commonwealth, representative speaker, Delta Chi Sigma, Alpha Phi Omega, Camera Club, Echo Annual staff.

We are extremely proud of these three outstanding Brothers of Alpha Phi Omega and take pleasure in extending "Congratulations."

Upsilon Chapter is making plans to have its entire membership attend the 1938 Alpha Phi Omega national convention in St. Louis, Mo.



The Charter Members of Beta Gamma Chapter, Installed June 6, 1937, at Central Y. M. C. A. College

TORCH and TREFOIL

The Magazine of
Alpha Phi Omega

National Service Fraternity

Office of Publication
410 Land Bank Bldg.
Kansas City, Missouri

Advertising Rates on Application to the
Office of Publication

Theo. R. Pfalsgraf.....Editor
Sidney B. North.....Business Manager

National Executive Board of Alpha Phi Omega

Walter W. Head.....St. Louis, Mo.

National Honorary President

H. Roe Bartle.....Kansas City, Mo.

National President

William J. Campbell.....Chicago, Ill.

National First Vice-President

Byrnes MacDonald.....New York, N. Y.

National Second Vice-President

Sidney B. North.....Coffeyville, Kansas

National Secretary

Dr. Edwin C. Johnson.....Chicago, Ill.

National Treasurer

Theo. R. Pfalsgraf.....Los Angeles, Calif.

Editor "Torch and Trefoil"

Dean Francis M. Bacon.....Los Angeles, Cal.

Carl S. Bauman.....St. Louis, Mo.

George H. Charno.....Kansas City, Mo.

Rear Admiral W. T. Cluverius, U. S. N.....
Philadelphia, Pa.

Fred G. Davie.....Lincoln, Nebr.

Dean Raymond O. Davies.....Chicago, Ill.

C. M. Finnell.....Chicago, Ill.

James P. Fitch.....Dallas, Texas

Harry C. Good.....Moline, Ill.

Dr. M. C. Hayes.....DeKalb, Ill.

Frank R. Horton.....Easton, Pa.

Dr. Louis H. Rentrow.....St. Louis, Mo.

John M. Schiff.....New York, N. Y.

Fred P. Strother.....Columbus, O.

Prof. A. L. Thomas.....Auburn, Ala.

Dr. Ray O. Wyland.....New York, N. Y.

THE MARK OF A MAN

A sensible man does not brag . . . You shall not tell me that your commercial house, your partners, or yourself are of importance; you shall not tell me that you have learned to know men, you shall make me feel that, your saying so unsays it. You shall not enumerate your brilliant acquaintances, nor tell me by their titles what books you have read. I am to infer that you keep good company by your better information and manners, and to infer your reading from the wealth and accuracy of your conversation . . . The mark of the man of the world is absence of pretension. He does not make a speech, he takes a low business tone, avoids

all brag, is nobody, dresses plainly, promises not at all, performs much, speaks in monosyllables, hugs his fact. He calls his employment by its lowest name, and so takes from evil tongues their sharpest weapon . . . Men take each other's measure when they meet for the first time - and every time they meet . . . Men do not convince by their argument, but by their personality.

- Ralph Waldo Emerson.

BROTHERHOOD

The crest and crowning of all good, Life's final star, is Brotherhood, For it will bring again to earth Her long-lost Poesy and Mirth; Will send a new light on every face, A kindly power upon the race. And 'till it comes, we men are slaves, And travel downward to the dust of graves.

Come clear the way, then, clear the way:

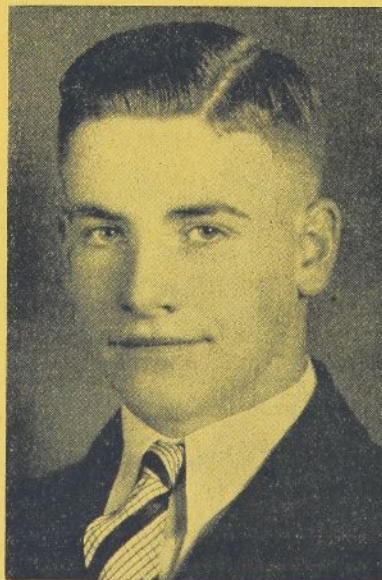
Blind creeds and kings have had their day.

Break the dead branches from the path:

Our hope is in the aftermath - Our hope is in heroic men, Star-led to build the world again.

To this event the ages ran, Make way for Brotherhood - make way for man!

- Edwin Markham.



TED WEIS

. . . Eagle Scout of Troop 135, Kansas City Council. Winner of Alpha Eta Chapter's \$200 scholarship, awarded annually to the outstanding Scout of the council.

THE NATIONAL PRESIDENT SAYS -

Thrilled am I with the fine way in which APO is getting off to a marvelous start this fall. More chapters are starting out with an energetic, purposeful program. More men have been pledged and initiated during the first two months of the school year than in any year since our fraternity was organized. More and more the badge of Alpha Phi Omega is being recognized as the badge of service, not only in colleges but throughout America.

Having visited eleven campuses this fall, I have found that Alpha Phi Omega is fully respected by the presidents, deans of men, and those who are in other positions of authority and influence. This cheers my heart, for it is a positive indication that those who carried on for APO in the older days were true to the faith. During the year 1937-38 we must blaze an even greater trail of service.

Fifty-two units of APO, meaning fifty-two happier campuses. Fifty-two beacons of light across the continent making life better and fuller for those who receive the benefits of the good work of Alpha Phi Omega.

A word of welcome in the presidential column to our new chapter at East Texas State. They are fine looking gentlemen and are taking their job in Alpha Phi Omega seriously. It was my privilege to speak to their student body and to present the faculty leadership, the Scouting advisors, and the members of the chapter to the 1800 men and women of the student body of that institution. Welcome - yea, thrice welcome, Beta Delta. You are the baby chapter now, but not for long, for the program of extension pushes forward, and before your humble servant has the opportunity of writing another such column another link in the endless chain of Alpha Phi Omega will have been chartered.

To all the men of Alpha Phi Omega I extend greetings, and bid you "Carry On."

Faithfully and fraternally yours,

National President.

6000 AT PURDUE BOY SCOUT DAY

*By Donald G. Moore, President of
Alpha Gamma Chapter*

Alpha Gamma Chapter started this year with the most successful Boy Scout Day the University has ever seen. There were over 6000 Boy Scouts, School Boy Patrol members and Girl Scouts at the Purdue-Butler game, September 25. Most of them came early Saturday morning to visit the campus. The chapter members conducted tours every half hour during the morning and the members also handled the registration and parade to the stadium.

We were really glad for our large chapter membership in handling this event, because it is a real job to entertain several thousand boys and girls and keep everybody happy.

Last year our most successful effort was the "Spring Spree," a student-faculty get-together at Camp Ross. We intend to continue it as an annual event.

BETA BETA "STARTS ON TIME"

By Richard Hammerstein, President

Believing that the right time to start activities in an Alpha Phi Omega Chapter is at the very beginning of school, Beta Beta Chapter at Michigan State held its opening meeting the night before Freshman Week started September 14. A large percentage of the active members and advisors attended the dinner session, and as a result of starting on time, we were privileged to have a major part in the orientation of new students.

Members were stationed at the seven deans' offices to handle confidential papers concerning new students. Other members were on hand at the several convocations to handle the ushering and the disbursing of pamphlets and information. Twenty members worked at these duties over a period of three days.

The first week of school the chapter carried on Freshman visitation, the members going out and trying to contact all new Freshman men, about 1500, seeking to help them in the matter of room, board, studying, social life on the campus, outside activities, etc.

Last year, this visitation project

was instrumental in keeping about twelve men from dropping out of school, and we hope to do as much good this year. All freshmen that need help are reported to the Dean of Men's office and the dean, who is a member of Alpha Phi Omega, handles each case personally.

Beta Beta Chapter is holding four meetings each month, including two business meetings, one social gathering, and one noon luncheon.

We are confidently expecting a large increase in membership this year and intend to greatly enlarge our services to the campus and community.

**A Personal Letter to You From
the National Secretary**

My dear Brothers:

Since February, 1933, it has been my pleasure and privilege to serve Alpha Phi Omega as National Secretary and to apply whatever talents I may have toward the upbuilding of our beloved fraternity. I have been the only professional worker in the Fraternity, devoting my entire time to the job.

In September of this year added family responsibilities made it necessary for me to seek ways of increasing my income, and although Alpha Phi Omega's national revenue last year was sufficient to pay all operating expenses and a considerable portion of back debts, I did not feel justified in asking the National Executive Board for a raise in salary. My feeling has been that any additional funds which our Fraternity may have for chapter service should be applied to the expenses of a field secretary who could personally visit and assist every chapter. And so I have accepted an offer to enter a business field.

President Bartle has requested that even with my new business interests I remain as National Secretary and continue my work on our fraternity publications, giving whatever time possible to this job, and I am happy to continue this responsibility.

In view of this new arrangement, my contact with the every detail of National Office operation will not be as close as it has been in the past years, and chapter leaders will probably not as frequently receive communications bearing my scrawly and illegible signature. However, my interest in Alpha Phi Omega is just as strong and real as ever. I truly love this Fraternity and have the highest respect for its ideals and its activities, and I pledge you that the work of my office will never go unheeded.

I am proud to again join the ranks of volunteer workers in Alpha Phi Omega, and will always be anxious to do everything within my power to advance this organization which is so close to my heart. My best wishes are with each of you in the work of your chapter this year, and if I can personally assist you at any time, please command me. Every indication points to 1937-38 being the greatest year in our Fraternity history. With an extra measure of work and devotion, this year will be "tops."

Cordially and fraternally yours,

SIDNEY B. NORTH

ALPHA SIGMA GROWS

... For this fall ... if our hopes are realized, we intend to assist the Cornhusker Council staff put on a Hallowe'en party for the Scouts in Lincoln ... In the last year the active membership of Alpha Sigma Chapter has increased two hundred per cent. In the coming year we hope to make similar progress not only in our growth, but in the service we are doing to the university and to the local Boy Scout Council." - Vice-President Bill Williams of Alpha Sigma, University of Nebraska.

Some Typical Chapter Project Lists of 1936-37

(The numbers appearing in parentheses indicate the number of chapter members participating in that project).

ALPHA OMEGA CHAPTER

Kirksville College of Osteopathy
and Surgery

- Sponsored "Let's Vote" campaign for national election. (60)
- Assisted in all school assemblies. (8 to 10 each week.)
- Sponsored sale of student loan fund stamps. (65)
- Maintained information booth for aid of freshmen at registration time. (5 or 6 on duty).
- Sponsored pep rally meeting. (45)
- Sponsored school song campaign. (45)
- Attended Mother's Day service in body. (50)
- Outdoor meetings and hikes.
- Sponsored clinic benefit dance. (75)
- Attended Kirksville Scout Jamboree in mass. (75)
- Sponsored Scouters meeting at college. (80)
- Purchased equipment for new clinic building.
- Paid for several x-rays for needy people.
- Helped save a life by securing medicine for a sick person.
- Paid for surgical operation to be witnessed by entire senior class.
- Sponsored 2 all-school dances. (75)
- Helped Women's League in sponsoring Children's Clinic benefit carnival. (20)
- Several chapter dinners and parties through the year.

ALPHA UPSILON DePauw University

- Contributed to Christmas Fund.
- Registration of Dads-Dad's Day. (20)
- Registration of Grads-Alumni Day. (10)
- Ping-pong tournament for whole campus (committee of 6, 8 members participated, total of 52 contestants, 75 spectators at final match.)
- Observed Scout Sunday.
- Served as Merit Badge Counsellors. (22)
- Sponsored Junior Leadership Training Conference for Scouts, with 48 delegates. (20)
- Outdoor meetings, hikes.

ALPHA DELTA CHAPTER

San Diego State College

- Sponsored a beach safety campaign. (10)
- Guide service to visitors and freshmen. (14)
- Information booth at Scout camp-oree. (6)
- Assisted in Courts of Honor. (7)
- Freshman orientation. (16)
- Cooperated in Blue Key carnival. (14)
- Motivated a city-wide guide service. (12)
- Assisted in celebrating college founder's day. (16)
- Bowling team. (10)
- Outings—mountain parties, beach parties, overnight hikes, hay rides, dances, bull sessions.

UPSILON CHAPTER

Milwaukee State Teachers College

- Speaking at theaters during Red Cross Flood Relief Drive. (6)
- Assisting in Progressive Education Conference. (5)
- Members acting as representatives in student government. (13)
- Organization and class officers. (10)
- Handling "Peak Night" ticket sales. (20)
- Ushering at student assembly programs. (10)
- Orientation of Freshmen. (20)
- Staff members on student newspaper. (6)
- Speaking at Courts of Honor. (6)
- Six Scout troops served. (7)
- Public speakers at forums. (6)

ALPHA GAMMA CHAPTER Purdue University

- Sponsored "Spring Spree," campus-wide student-faculty get-together. (40)
- Hosts to Scout Day on campus. (35)
- Conducted survey for community fund committee. (15)
- Employment service for summer work for members.
- Sponsored radio program. (6)
- Assisted local troops. (25)
- Members served on Boards of Review. (12)

ALPHA OMICRON CHAPTER Southern Methodist University

- Created Library for poor section of city, 450 volumes. (45)
- Three theater parties for crippled children. (40)
- Blood transfusions. (20)
- Purchased two radios for hospital use.
- Open forum discussions. (25)
- Care of trophy cases. (10)
- Service at all conventions on campus. (50)
- Freshman orientation. (10)
- Visited three colleges in interest of Alpha Phi Omega.
- Several members actively serving in Scout leadership. (7)
- Sick calls. (50)
- Rush party, overnight hike, domino parties, picnic and a special party given by President Claude Graves.

MANY ACTIVITIES IN ALPHA ALPHA

By Arthur Matheson, President

Approximately 12,000 Scouts attended Scout Day at the University of Illinois, October 2, with Alpha Phi Omega playing host.

Twenty-eight prospective members attended the first open meeting of the chapter this fall, and twenty-three of them have already been pledged. Dr. Wendell S. Wilson, new head of the athletic department at Illinois, has been secured as a faculty advisor. He has traveled extensively in foreign countries and is highly impressed with the values of Scouting throughout the world.

An initiation hike was held at Camp Drake near Urbana on October 23, and the formal initiation for the new class of members was held October 27.

Three major activities are on the docket for the next two months: (1) Assisting the council in promoting the Cub movement, (2) Conducting weekly swims for Scouts in the university pool, (3) Sponsoring an all-university Christmas Tree during the week previous to the winter vacation, giving all students an opportunity to contribute to the happiness of others at Christmas time.

THE EDITOR SAYS . . .

Loyalty is more than a mere gesture. You owe your best to the honor of the fraternity of which you are a member. Wherever you are, you are bearing its name. Never belittle your own judgment by apologizing for your organization.

Live—do not merely exist in your chapter meetings. The success of your chapter depends as much on your alertness and willingness as upon your President's leadership and initiative. He can lead the chapter no faster and no farther than the chapter is prepared to advance.

ALPHA SIGMA CHAPTER ENJOYS GREAT YEAR

By Bernard Ingram, President

The school year 1936-37 was one of greatest success for Alpha Sigma Chapter at the University of Nebraska. Three pledge classes were conducted and twenty-six men were initiated into the fraternity.

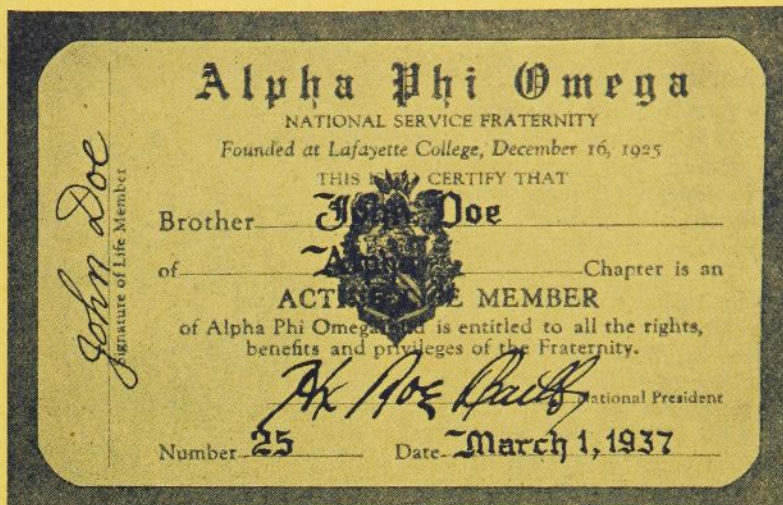
The service program included (1) a survey on final exams; (2) an educational drive on voting for the last national election; (3) participation in executing a city-wide Scout Camp-O-Ral; and (4) conducting Court of Honor programs.

The social program included two rush smokers held at the Lincoln University Club, a scavenger hunt in the fall, a cave party in the winter and a picnic in the spring. All of the activities have served to promote the true APO spirit and have given increased value to the chapter.

The activities for this year include an extensive freshman orientation program, Council Camp-O-Ral, Scout Halloween party, and further participation in Court of Honor programs.

In addition to working as a group, a large number of the Brothers have shown the spirit of unselfish service by giving active leadership to Scouting in the Cornhusker Council. Three are Scoutmasters, eight are Assistant Scoutmasters, one serves as program director of the Lincoln Base Camp, another as swimming and waterfront director of the same camp, and a third as assistant camp director of the Cornhusker Area Camps.

Alpha Sigma Chapter is really putting Alpha Phi Omega "on the map" at Nebraska.



Get Yours Now! The Preliminary Life Membership Fee Ends
December 31, 1937

THE HONOR ROLL CONTINUES TO GROW

There is a feeling of satisfaction in knowing that throughout your lifetime you can keep in close touch with the development and activities of Alpha Phi Omega and participate in the meetings and projects of the chapters and the national fraternity whenever occasion permits. Such is the privilege of a Life Member.

We are happy to add eight new Life Members to the Honor Roll of our Fraternity—yes, we call it the Honor Roll because these brothers have such a keen interest in Alpha Phi Omega as to participate actively in the affairs of the fraternity throughout all the years to come. These new members are:

John H. Myers (Sigma)
George H. Charno (Alpha Eta)
Everett S. Brooks (Delta)
Franklin L. Ward (Delta)
Cullen Gordon Lackey (Delta)
Eugene J. Newhouse (Xi)
Robert Wade Norwood (Alpha Omega)
George F. Weaton, Jr. (Kappa)
Earl D. Fraser (Alpha Chi)
Louis E. Pepperberg (Alpha Chi)
William R. Willard (Alpha Chi)
Lawrence G. Peterson (Alpha Chi)
Arthur E. Harvey, Jr. (Delta)
Prof. Albert L. Thomas (Delta)

You really get your money's worth when subscribing to Life Membership. For the active undergraduate member, this membership eliminates all future National registration fees and furnishes him a

life subscription to the TORCH AND TREFOIL. For the alumnus Life Membership gives lifetime subscription to the magazine and makes him eligible to participate actively in all national, divisional and inter-chapter meetings.

Preliminary Rate Until December 31

The preliminary fee of \$8 for Life Membership is in effect until the end of the present calendar year. Subscribe now, before the regular rate of \$10 becomes effective.

PAGING BROTHER CHAIRMAN OF THE CHAPTER PROGRAM COMMITTEE—

Uncle Sam has free films that you might want to use in your chapter programs. Various departments of the Federal Government now have moving picture reels of their activities that are available to any organization that will be responsible for them. These films are suitable for showing at almost any kind of gathering. No charges are made for the use of such films, but applicants are asked to pay carrying charges both ways. The films are listed in a catalog which may be had by writing to the Superintendent of Documents, Washington, D. C.

A SHORT SHORT

Eighty-eight men in attendance at the Division 9 Conference, with only three chapters in the division! The next issue will give the story of this conference.

PHI CHAPTER IS "TOPS" IN ACTIVITIES AND SERVICE

(Continued from Page 1)

More than 100 members were active in Phi Chapter at the time school closed last June, and the high percentage of these members that participated in every chapter activity was nothing short of marvelous. Forty-five new active members were initiated during the year and twenty-five pledges were carried over for initiation this fall.

Activities of Our Best Chapter

The following list of Phi Chapter projects for 1936-37 gives something of an idea of such services as will make Alpha Phi Omega one of the outstanding organizations on any campus. But this list cannot possibly picture the spirit and consecration of the Chapter Officers and Advisors which have made the Chapter program so effective.

A. Fellowship Events

Mountain-climbing trip.
Valentine dance.
Gym get-together.
Chapel attendance on Scout Sunday.

Outing at Scout reservation.
Student-faculty steak roast.
Theater party.
Winter carnival participation.
Forums.

B. Service to the Campus

Student Loan Fund benefit dance, with 250 couples attending.
Winter Carnival officiating.
Freshman information booth.
All-university roller skating party.

C. Service to Community

Leadership in Scout Troops.
Talk to Indians at Reservation.
Memorial exercises at Camp Woodland.

D. Service to Scouting

Tree planting at Scout Camp.
Scout Exhibit in university library during anniversary week.
Individuals assisting in Scout leadership.

E. Service to the National Fraternity

Ritual delegation visited Cornell to aid Gamma Chapter; 25 new men pledged.
Committees working for the organization of chapters at four other schools in New York State.



THE WALLACE O. LEE TROPHY

It is presented each year to the Chapter of greatest achievement. Phi Chapter won the award for 1936-37.

BETA GAMMA CHAPTER INSTALLED AT CENTRAL Y. M. C. A. COLLEGE

(Continued from Page 1)

tendance included:

Sigma Chapter:
Clayton J. Anderson
John Myers
Herman Ogg
MacDonald Wood
Robert Barmeier
Sydnor Shatz
John Nagel

Alpha Alpha Chapter:
Arthur Matheson
Robert Lichtenheld

Upsilon Chapter:

Roy Shapiro
Harvey Stevens
Donn Brazier
Ervin Bruner

Alpha Eta Chapter:
Maurice Hansell
Robert Grafrath
James Rawlings

The following was the program of the installation banquet held after the initiation:

Presiding Officer—

Brother Rupert Wenzel.....President
Toastmaster.....Brother C. M. Finnell
Invocation.....Bro. Edwin C. Johnson
Presentation of Charter—

Brother C. M. Finnell
Presentation of Certificates and Cards—

Brother Sidney B. North
Chapter Greetings:

Clayton J. Anderson, Sigma
Roy Shapiro, Upsilon

Robert Grafrath, Alpha Eta
Talks by Faculty:

Dean Merle P. Gamber of the
Commerce School

Dr. Frank Jursa, Head of Mathematics

Miss Mary Lee, Social Activities
Director

Prof. Vergil C. Lohr, Chm. Department of Physics

Mr. Hickman, Business Manager
Closing Challenge—

Brother Edwin C. Johnson

Closing Song and Benediction—

Conducted by Brothers James
Rawlings and Bob Grafrath of
Alpha Eta Chapter.

The officers elected to serve this new chapter during its first year are:

Rupert L. Wenzel.....President
Vernon Barnes.....Vice-President
Lewis Gunther.....Recording Secretary
Joseph Palumbo.....Corre. Secretary
Carl Orgo, elected treasurer for the year 1937-38, drowned in a yacht race September 5, 1937, succeeded by

Leo Pasquine.....Treasurer
Daniel Rounds.....Historian
John Malovich.....Alumni Secretary

The advisors are:

Dr. C. H. Seevers, senior faculty advisor, professor of zoology.

Dean W. F. Cramer, assistant dean of men.

Dr. K. B. Taft, professor of English.

Prof. Lyle O. Hill, chairman of the chemistry department.

Prof. V. C. Lohr, chairman of the physics department.

Mr. Richard Dick, Scoutmaster.

Mr. Stanley Miller, Assistant Scout Executive.

Without question, this is one of the finest groups ever to be installed into our fraternity. We have every reason to expect an excellent record for Beta Gamma Chapter, and the manner in which they are assuming their responsibilities as joint hosts with Sigma Chapter to the Division 7 Conference of Alpha Phi Omega is indicative of their ability to promote an outstanding program.

Brother Harrison Johnson, President of Alpha Phi Chapter at Washington University, is First Mate of the National Sea Scout Flagship "Polaris" in St. Louis.

Gleanings from Chapter Correspondence

A Scout Camporee was held on the Washington State College campus May 14 and 15, with Alpha Phi Omega men acting as judges and aids. It proved to be a source of interest and information to those not acquainted with Scouting as well as to the Scouts themselves.

Iota Chapter at Park College has plans under way for building an Alpha Phi Omega Hut on the campus. The building is to be used for chapter meetings, committee meetings and informal gatherings, as well as a place where members may go for meditation and study.

A student-faculty steak fry was sponsored by Alpha Tau Chapter of Butler University late in October.

Alpha Delta Chapter at San Diego held regular meetings throughout the summer months and made some extensive improvements on the chapter room. One of their plans for the fall is a benefit boat ride to establish a scholarship fund for some worthy Scout.

The drive for an inclusive Student Activity Fee for Omaha University, sponsored last spring by Alpha Theta Chapter, was culminated May 20 in an announcement by the Board of Regents that they had approved and adopted the proposal.

"We held our annual Men's Stag, which was the biggest success of any past Stags. We are establishing an extensive membership procedure, in order that we can show Brother Roe Bartle a good time and a keen chapter when he is out here. We plan to establish a loan fund which, we hope, will some day work into a scholarship fund for the most outstanding Boy Scout of the Los Angeles Council."—Vice-President Earl Westover, Alpha Kappa, University of Southern California.

"Our Alpha Xi Chapter is expanding quite rapidly, much to our pleasure, and everyone is proud to be a member of such an idealistic fraternity."—Treasurer Harold Wy-more, Alpha Xi, Washington State College.

"It was decided that an alumni association would be established . . . These members of the 'Old Guard' lend stability to an organization, and we want to keep them near us."—President Gene McCormack, Alpha Delta, San Diego State College.

"Over 65% of the members of Psi Chapter are very active in activities on the campus."—Secretary Marlin Wilber, Psi Chapter, Santa Barbara State College.

"We had a big turnover in leadership this past year, however, we have a bunch of 'live wires' and should have a very successful year . . . Some of the projects we have made plans for are starting a chapter at the U. of Idaho, publishing a list of certified examiners for the council . . ."—President Lex Tempelin, Alpha Xi, Washington State College.

"Alpha Phi Omega here in Milwaukee is stepping right out in the service field, and it is heartwarming to see the recognition given it by the school paper."—Secretary Donn Brazier, Upsilon, Milwaukee State Teachers College.

"We are the only group on the campus that is readily called for service . . . Friday the Student Council had a conference, calling on members from colleges of the five adjacent states, and we carried out campus tours from the Union Building for the delegates. Sunday the college dedicated the new dormitory and Alpha Phi Omega had general charge of the dormitory during the day for public inspection. On December 10 we will sponsor a dance at which time all of our pledges will be announced."—President Richard Hammerstein of Beta Beta, Michigan State College.

"We are planning on taking in two new faculty members, young men who have good Scouting background. (I think good Scouting background is absolutely necessary in the qualifications for leadership of Alpha Phi Omega)."—Faculty Advisor Gurth Whipple of Phi Chapter, Syracuse University.

"Our fireplace, built entirely by members of Alpha Psi Chapter, will be located on South Mountain here in Bethlehem, and is to be used mainly as an outdoor meeting place. It will, however, be used by Bethlehem troops, and possibly by other campus organizations."—President Henry G. Naisby, Alpha Psi, Lehigh University.

"Alpha Rho held its Annual Barbecue. Supper for prospective pledges on Sunday evening, October 10; we had 39 prospects in attendance . . . The future of Alpha Phi Omega on the University of Texas campus looks very promising this year and we hope to accomplish a great deal in the way of service to the University and the local council."—Secretary Bob Kniffin, of Alpha Rho, University of Texas.

"The Iota Chapter wishes to make this one of its biggest and most effective years on the Park College Campus. We are starting by lending a help hand Freshman week . . . Last spring we finished a little job of improving a part of the campus, which was greatly appreciated."—President J. Malcolm Good, Iota, Park College.

"We have pledged twenty-five men. This is but a start, for the drive we picked up last year is steaming on. The group of pledges are a keen gang with lots of pep."—President Jack H. Paisner, Phi Chapter, Syracuse University.

"We have a fine group of faculty sponsors and a very cooperative group of officers."—President Harrison H. Johnson, Jr., Alpha Phi Chapter, Washington University.

Alpha Eta alumni are corresponding with alumni of other chapters to learn what these men are doing for APO.

When Roy Shapiro, Past President, and Harvey Stevens, President of Upsilon Chapter, say their gang will all be at the St. Louis Convention in 1938, we have every reason to believe the Chapter will be there 100%.

A FULL PROGRAM IN ALPHA CHI

Brother Roy C. Heacock, President of Alpha Chi Chapter at Mass. Institute of Technology, writes:

"Our Chapter has started its year's work in grand style and the projects which we have planned thus far include:

1. All Day Hike (to which prospective members will be invited).
2. Continuation of Scout Troop at Robert Brigham Hospital for Crippled Children.
3. Continuation of M. I. T. guide service.
4. Senior Scout dance.
5. Week-end camping trip to Lake Massapoag.
6. Entertainment of a group of Eagle Scouts at the M. I. T. for a day."

COOPERATION MADE PEAK THE SUCCESS IT WAS

(Editorial from Milwaukee's "Echo Weekly")

When the final curtain closed on the second annual Echo Weekly sponsored Peak Night program Friday, the din of applause was enjoyed most by the sponsors. But this acclaim could not have been possible without the unselfish co-operative spirit of many college groups.

Continuing its program of service, Alpha Phi Omega, national service fraternity, handled ticket sales and aided the Echo Weekly committees in the innumerable small details concurrent with every program.

SOME VITAL STATISTICS

Brother Joseph E. Macy, past president of Mu Chapter and now Field Executive of the Kansas City Council, is the proud (indeed, exceedingly proud) father of twin girls, born October 10, 1937, at Menorah Hospital in Kansas City, Missouri. The names of the two are Betty Jeanne and Shirley Jo.

Brother Sidney B. North, National Secretary, has come forth with announcement of the arrival of a son, "Larry," September 29, 1937, at Medical Center Hospital in Coffeyville, Kansas. Sid is proud of the prospect of his son becoming affiliated with Alpha Phi Omega, and is hoping one of APO's 150 (?) chapters in 1954 will extend Larry a bid to membership.



The picture above shows Brother Eric Wadleigh and a trailer load of Yucca which he gathered for use in making fire by friction sets.

"I'm Working My Way Through College"

By Eric Wadleigh, Alpha Gamma

Although this title phrase has become hackneyed and trite, many fellows are getting a higher education through their own efforts.

When I was thinking of returning to Purdue for my second year, I realized that I had sufficient funds for that one year, but that two more years had to be provided for. Of course I could go to Dad, but I wanted to earn my own education, and furthermore two younger brothers were to be considered.

My task was to find some work that I could do while in school. Investigation showed that all of the college "rackets" were well taken care of by the upperclassmen, and that I had either to look for a position or create a new one. From a suggestion by my Scoutmaster I chose the latter.

Profiting by my experience in Scouting, I decided to start a fire set company. I would make the best fire-building sets possible and try to pass on to new Scouts some of the fun that I had enjoyed in building fires without matches.

I planned to make both Yucca friction sets and flint and steel sets, and I was sure that within a week or two I would be ready for business. As I soon found out, this was not the case.

After months of planning, searching, and buying I was ready to sell sets, but as I glance back through my records I am sure that I never realized the tremendous job that I undertook. My first big task was to secure Yucca for the friction sets. Yucca is a desert plant which thrives in the Southwestern part of the country. After buying the best \$40 car available, I set out with a

fellow Scout for New Mexico. From Indianapolis to New Mexico and return was a 2,000-mile journey, but one month later we had completed the trip and had collected from the desert sufficient Yucca for 4000 sets. We pulled the wood back in a large trailer which we built, and although it did serve the purpose, it was so hard on tires and cut so far into our dwindling funds, that we were forced onto a diet of chocolate and bananas for the last 600 miles.

With the friction sets well under way I turned my attention to the flint and steel. Through a special arrangement I was fortunate enough to get a quantity of good files from Atkins Saw Co. The State Geology Department informed me that the kind of flint found in this country was not the best for fire-building, as it was too brittle, hence I decided to use an imported Norwegian flint. Machinery was priced, labels designed, rubber stamps made, containers purchased, instructions printed, tinder ordered, and others of a myriad of details carried out. I chose as the name of my enterprise the Eagle Fire Set Company.

As president of the company I supervised the entire procedure. As secretary I kept an accurate account of my progress in the formation. My first job as advertising manager was to send a sales letter to Scout Executives throughout the country. As salesman I traveled for a month around the Great Lakes, demonstrating and selling as I went from camp to camp.

This October marks the first birthday of the Eagle Fire Set Co. It has been a profitable year. Nearly

(Continued on Page 12)

FILLING A NEED

(From the campus paper of Michigan State College, home of Beta Beta Chapter)

Alpha Phi Omega, now in its second year on our campus, is establishing an enviable reputation for service.

This was demonstrated last week end when five members conducted a tour of the campus, which was considered one of the highlights of their visit here by delegates to the Student Council convention, and on Sunday when 20 members served during the afternoon to show people through Williams dormitory and a like number acted as guides in the evening. The members of Alpha Phi Omega do this service with no remuneration, and are at the call of any group.

The fraternity is unique in that it is not an honorary. The only requirement for membership is that a man shall at one time have been a member of the Boy Scouts of America. Thus, 60 per cent of all men students are eligible for membership.

The record of the fraternity is even more remarkable when it is realized that it did not receive its national charter until late in the winter term last year. Before that time it was a pledge group. The four-fold program of service . . . service to the college, service to the local community, service to the local Boy Scout Council, and service to selves . . . sponsored by Alpha Phi Omega is one of which any organization might well be proud.

The founding of the chapter here resulted from the efforts of Allan Brightman and Richard Hammerstein, who had heard of the fine work of the organization on other campuses. With the advisorship of faculty members Russell Daubert, Duncan Stewart, Lloyd Geil, J. F. Thaden, and J. R. Duncan, the fraternity has already shown its capabilities.

There is need on the Michigan State campus for a strong men's service organization. The short history of Alpha Phi Omega indicates that it will supply that need.

"And if I should win, let it be by the code.
With my faith and my honor held high."

—Berton Braley's PRAYER OF A SPORTSMAN

New York Times Tells of Alpha Phi Omega

(Editor's Note: The following is a re-print of an article titled "College Society for Scouts" which appeared in the New York Times on Sunday, February 28, 1937).

In a recent message to the Boy Scouts, President Roosevelt remarked that he liked to think that the many thousands of men — some young, others entering middle-age — who are no longer active in the organization, have nevertheless found it true that "once a Boy Scout, always a Boy Scout."

During its twenty-seven years, Scouting has enrolled 7,377,008 American boys and leaders, of whom 1,069,165 are still active in the movement and thousands of others still maintain an interest and do what they can to further the Scout program. One point in the careers of many older Scouts, at which intimate touch with the troop is lost, comes when they leave their communities to enter college. To bridge over this break, the youth may either seek service with the Scout unit in the college community or he may join Alpha Phi Omega.

Alpha Phi Omega has been established for college men who have a common interest in the Scouts. The first chapter of this national fraternity was founded at Lafayette College at Easton, Pennsylvania, in December of 1926.

The members of the fraternity gather socially at overnight camps, outdoor meetings, smokers, dances and banquets. They hold discussion groups and help each other in personal problems. They serve their university by helping freshmen to get oriented, raising student loan funds, organizing hiking clubs and conducting radio programs in the school's interest. Scouting is aided by Alpha Phi Omegas who act as merit badge counselors for local troops or as Court of Honor officials and assistant Scoutmasters. Often they raise scholarships for worthy Scouts and conduct Scout rallies on the campuses.

ANNUAL CAMPFIRE

You are invited to a campfire sponsored by Alpha Phi Omega, national service fraternity. We will meet at the east door of the gym at 7 o'clock on Monday, Sept. 13. You'll have a good time and an opportunity to get better acquainted with your fellow freshmen in the companionship of a blazing campfire.

This invitation was extended by members of Pi Chapter to every man who enrolled in the freshman class at Kansas State College this Fall.

Dear Santa Claus—

"Dear Brother Claus: My biggest Christmas desire is a more dynamic conception of the growing scope on APO on the part of each chapter in these United States. Somehow I can't visit all the chapters on one night as you can, so if you'll give me a hand on this big job, I'll appreciate it. Fraternally yours, Brother Roe. P. S. The men you visit will get a thrill out of it, too."

"Dear Santa: Please, I want chapter records properly kept and promptly transmitted to our National Office. I have been a very good boy all year and have done all I could. —(Signed: Brother Sid)."

"More pictures and stories about our men and their work, Santa, if you please—I just love good story books.—(Signed: Ye Ed, TORCH AND TREFOIL)."

"I've got what I want, Santa—just keep it coming . . . continued competition for possession of me. I hope I get another home as good as the one I have at Phi Chapter. There's a chance for any group, Nick, and the 1937-38 winners are going to be doing a REAL job if they outstrip the efforts of certain chapters we know about.—(Signed: The Wallace O. Lee Trophy)."

BETA ALPHA OFFICERS MEET
WITH PRESIDENT BARTLE

An occasion of much enthusiasm was the meeting of National President H. Roe Bartle with the officers and advisors of Beta Alpha Chapter on the Wichita University campus, September 25.

The major project of the chapter for the first semester is a safety campaign on the campus. Full cooperation has been received from the Wichita Police Department, and the campaign promises to be highly effective.

The occasion of Brother Bartle's visit to Wichita was the 25th Anniversary of the Rotary Club of that city, at which he was the honored guest and principal speaker.

IN MEMORIAM

By Paul Cundy, First President of Beta Gamma Chapter

It is with deepest regret that we announce the death of Brother Carl Orgo of Beta Gamma Chapter. This active and aggressive worker in Alpha Phi Omega was initiated into the Central Y. M. C. A. College Chapter at the time of its installation, last June 6. He was drowned while participating in a yacht race, September 5.

Brother Orgo was the first Treasurer of his chapter, and served in that position until his death.

The loss of this consecrated brother is keenly felt by those who knew him, and his fine spirit will ever be influential to Beta Gamma Chapter.

A BIGGER AND BETTER PHI CHAPTER

(This is a quotation from a letter received at the National Office from Brother Samuel Grober, Treasurer of Phi Chapter, dated October 11, 1937).

"I am happy to write that Phi has begun its activities for the year and it promises to be bigger and better than ever. We held our first meeting last Tuesday at the Syracuse Chapter of Sigma Alpha Epsilon, at which fraternity house at Lafayette College, Alpha Phi Omega was founded thirteen years ago. We had quite a large turnout and at that time we explained to the prospective pledges the aims, purposes and ideals of Alpha Phi Omega. Also the past activities were related and tentative ones discussed. It was all met very enthusiastically.

"Yesterday, Sunday, we held our first pledging service. We pledged 20 new men which was somewhat small, but due to some existing conditions we felt it was very good. We expect to pledge additional men this Wednesday when we hold our gym get-together. Brother Art Tarrow, who is a varsity cheerleader, is in charge.

"When you receive and look over the pledge applications, I'm sure you will agree we have a real gang this year.

"On Saturday, October 23, we start on our week-end trip to Mt. Marcy. Judging from last year's attendance of 40, we should have a good many more this year.

"The chapter is enthusiastically looking forward to the Fall Banquet when President Roe Bartle will be present. I know it's going to be a real thrill to all of us."

ETA CHAPTER SPONSORS NINTH ANNUAL CAMPOREE

In cooperation with Brother R. L. Thompson, Scout Executive, Eta Chapter of Northern Illinois S. T. C., sponsored the Ninth Annual Alpha Phi Omega Camporee on May 14 and 15, 1937.

The members of the chapter had complete charge of the arrangements and program for the event, with Brother William Hooker serving as Camporee Director. Assistant Directors were Brothers Adna Hatch and Alfred Kupferberg. Brother Donald Prentice was Chief Observer, Brother R. Storm was Chief Clerk and the remaining members of the chapter assisted in numerous capacities.

Eta Chapter has made available a limited supply of copies of the Camporee Program and Instructions (a 20-page booklet) for the use of other chapters. Any chapter which is interested in this type of project may secure a copy of the program by sending a request to the National Office. Orchids to Eta for this fraternity good turn.

SIGMA AND BETA GAMMA CHAPTER OFFICERS MEET

President Bartle is Host at Round Table October 3

Attendance was 100 per cent at an invitational meeting of the officers of Sigma Chapter of Northwestern and Beta Gamma Chapter of Central "Y" College, called and conducted by National President H. Roe Bartle at the Sherman Hotel in Chicago, October 3.

An enthusiastic spirit of cooperation was in evidence among the officers of these two chapters. General plans were discussed for this year's program in the chapters, and detailed arrangements were agreed upon for the Northwestern and Central "Y" units to serve as hosts

to the third biennial Divisional Conference of Division Seven, December 4 and 5.

In addition to the National President, the following brothers attended the round table meeting:

Sigma Chapter Officers

Robert Barmeier.....President
Herman Ogg.....Vice President
Sydnor Shatz.....Treasurer
John Myers.....Alumni Secretary

Beta Gamma Chapter Officers

Rupert L. Wenzel.....President
Vernon Barnes.....Vice-President
George Schaeffer.....Treasurer
Daniel Rounds.....Historian
Dr. C. H. Seevers.....

.....Senior Faculty Advisor

The conference was especially honored with the attendance of Brother Ralph N. Nodine, Scout Executive of the Chicago Council, formerly an advisor of Alpha Chi Chapter at Massachusetts Institute of Technology.

AMONG THE ALUMNI HERE AND THERE

Harry Hollis, Jr., former president of Alpha Gamma Chapter, is sanitary engineer in the Indiana Department of Parks and is vice president of Alpha Kappa Lambda.

Brother W. E. Swarthout, former president of Eta Chapter and a life member of Alpha Phi Omega, is principal of the Emerson school, Maywood, Ill. He was recently elected president of the Lion's Club of Maywood.

Brother George F. Weaton, who served as president of Kappa Chapter in 1934-35, is now in Peru, South America, employed as mining engineer for the Cerro De Pasco Copper Corporation. His thousands of miles distance from the United States have not lessened his interest in Alpha Phi Omega, and Brother Weaton, being a Life Member, has asked that his copy of the TORCH AND TREFOIL be mailed to his Peru address.

Brother Jarrott Harkey, founder and first president of Alpha Omicron Chapter and Division Nine Chairman of Alpha Phi Omega is now in the engineering service of the National Geographical Co.

"Doing good is the only certainly happy action of a man's life."

— Philip Sidney.

YOUR DIVISIONAL CONFERENCE

The peak experiences of the year 1937-38 are those of our divisional conferences, when our brethren gather in fraternal fellowship to enjoy life together and to build more strongly for the future of Alpha Phi Omega.

The Division 7 and 8 Conferences are on the calendar for the coming month.

The men of Alpha Phi Omega in the states of Wisconsin, Michigan, Indiana, and Illinois will meet December 4-5 at the de luxe Libertyville camp of the Chicago Council. Sigma and Beta Gamma Chapters are serving as joint hosts and have set up the finest type of arrangements possible. Indications point to all eleven chapters in these states being represented. Several petitioning groups will also have representatives in attendance, that they may receive a larger conception of the work of national Alpha Phi Omega.

Some of the headliners on the program of the Division 7 Conference will be Carl J. Carlson, Regional Executive of Region 7; William J. Campbell, member of the National Executive Board of the Boy Scouts of America and vice-president of our fraternity, "Doc" M. C. Hayes of Northern Illinois State Teachers College, chairman of the national permanent ritual committee, C. M. Finnell of the Chicago regional office, "Ed" Johnson, pastor of the Pilgrim Congregational Church of Chicago and the national treasurer of APO, Raymond O. Davies, divisional chairman of Division 7; Ralph Nodine, Scout Executive of the Chicago Council, H. Roe Bartle, national president.

The Division 8 Conference, comprising men of all our chapters in Missouri, Iowa, Kansas, and Nebraska, will be held in Kansas City, Missouri, on December 11-12. Plans are being made for a large attendance and a stimulating program. Alpha Eta, Iota, and Alpha Mu Chapters will serve as joint hosts.

Conference programs yield many dividends. They meet chapter problems squarely and help chapter officers to arrive at the most satisfactory manner of mastering them. They present to the men of Alpha

Phi Omega a larger picture of their work in APO, that they may feel the worthwhileness and the hugeness of it. They give each man a picture of the job that **he personally** may do for his fraternity. Best of all, they recreate in our hearts the thrill of living with a purpose and program of service to our fellow-men.

AN ALPHA MU PLEDGE FROM HONOLULU

From Honolulu, T. H., 3000 miles distant has come a freshman to William Jewell College and during his first week in school he was pledged to membership in Alpha Mu Chapter of Alpha Phi Omega.

He is one of 15 pledges which compose Alpha Mu's fall pledge class.

On the occasion of the pledging ceremony, plans were laid for the year's activities to include (1) the Covered Wagon Area Scout Day on the campus; (2) the sponsoring of a local Scout Dinner; (3) participation in a district Court of Honor; (3) the sponsoring of an Inter-fraternity Sing; (4) intramural basketball and softball tournaments (5) radio broadcasts and (6) social activities.

Brother Ralph Dunlop, President of the Chapter, is a senior in the-

ology and a member of the Sigma Nu fraternity.

ALPHA OMEGA IS PLENTY BUSY

Four projects already "under the belt" this fall is the record of Alpha Omega Chapter of Kirksville College of Osteopathy and Surgery. These are:

1. Assisting the City of Kirksville in its "Let's Vote" campaign to obtain 19½ miles of new paved streets and a new city water works. The election results were 10 to 1 in favor of the new improvements.

2. Operating a student information desk for securing rooms and helping freshmen get situated in boarding houses.

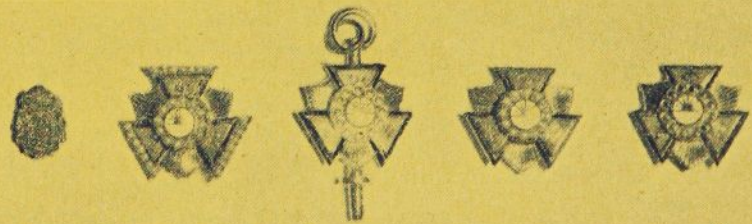
3. Assisting at the first school assembly, acting in the capacity of ushers and monitors.

4. Sponsoring the "Welcome Freshmen" all-school dance.

The chapter has expressed its determination to have at least 100 members by the close of the first semester. And when this gang makes up its mind, it usually "comes through." In fact, this chapter writes, "We are out after the Wallace O. Lee Trophy this year, and you may notify other contestants that we are going to give them plenty of competition."

Good News to All Members:

In the face of rising costs of labor and materials we are fortunate and pleased to announce that the prices of all Alpha Phi Omega insignia will remain the same, at least throughout this school year. It is suggested that all new initiates this year order their insignia promptly.



The Insignia of Alpha Phi Omega Price List

Standard new 4-piece key, gold plated.....	\$ 3.25
Standard new 2-piece badge, gold plated.....	2.50
Standard badge, plain initiate.....	6.50
Standard plain key.....	8.50
Standard badge, crown set pearl center plain arms.....	13.25
Standard badge, crown set pearl center and arms.....	24.25
Standard key, crown set pearl center plain arms.....	15.00
Standard key, crown set pearl center and arms.....	26.00
Recognition button, sterling.....	1.00
Recognition button, gold plated.....	1.50
Recognition button, 10K.....	2.50

Sole Official Jewelers **THE L. G. BALFOUR COMPANY**

Attleboro, Mass.

TWO APO'S ON WICHITA COUNCIL STAFF

Brother Robert Fisher, alumnus of Phi Chapter at Syracuse, who was one of his chapter's delegates to the Kansas City convention in 1934, has been commissioned as Field Executive of the Wichita Area Council, Wichita, Kansas. He is a graduate of the 54th National Training School for Scout Executives.

Brother Max Hatfield, founder and first President of Beta Alpha Chapter of Wichita University, attended the 53rd National Training School and has also been commissioned as Field Executive in his home council.

What a "break" for Beta Alpha Chapter to now have the constant backing of two outstanding alumni of the Fraternity.

(Continued from Page 8)

one thousand sets have been sold. They have been distributed in Scout Councils of seventeen states, and they have been placed in many leading department stores, including Marshall-Field's, Chicago; Wanamaker's, New York; The Big Store, Cincinnati; Gold and Co., Lincoln, Neb., and Strauss and Co., Indianapolis.

But now after a year of concentrated effort and a glimpse of success, I have conceived a much more worthy goal for my young business. After I became a member of Alpha Phi Omega I met many Scouts who were in a much worse condition, financially, than I. They were living from week to week, skimping their meals, even cooking their own. They were not able to give their best to their school work because of worry of the lack of finances. I often wished there were something I could do. I could see no solution until one day I fitted a fact and a desire together to produce an idea.

It had become quite evident to me that it would take several years to build up my business, and that when I was graduated it would be only well started. As I have other plans for a business career, the fire set business would end with my graduation. Why couldn't I pass it on to some other Scout, who would in turn expand the business, and as orders increased, gradually take in more and more Scouts to manufacture the parts? Already I have found it possible to use three other

Scouts from time to time, and there is no reason why more cannot be added.

There is a sufficient market for sets to require ten boys working in their spare time to fill the orders. Ten worthy Scouts, who otherwise would find it impossible to do so, could receive the benefits of a

higher education from the income from such a project. This is my goal: To have as many Scouts as possible obtaining a college education by promoting this fascinating and truly Scout activity, fire without matches.

I invite the cooperation of my Brothers in Alpha Phi Omega.

ROSTER OF CHAPTERS

Alpha Phi Omega

Alpha - Lafayette College.....	Easton, Pa.
Beta - University of Pittsburgh (Inactive).....	Pittsburgh, Pa.
Gamma - Cornell University.....	Ithaca, N. Y.
Delta - Alabama Polytechnic Institute.....	Auburn, Ala.
Epsilon - Northeast Missouri State Teachers College.....	Kirksville, Mo.
Zeta - Stanford University.....	Stanford, Calif.
Eta - Northern Illinois State Teachers College.....	DeKalb, Ill.
Theta - University of Virginia.....	Charlottesville, Va.
Iota - Park College.....	Parkville, Mo.
Kappa - Carnegie Tech.....	Pittsburgh, Pa.
Lambda - University of Kansas.....	Lawrence, Kas.
Mu - University of Indiana.....	Bloomington, Ind.
Nu - Upsala College.....	East Orange, N. J.
Xi - Iowa State College.....	Ames, Ia.
Omicron - University of Iowa.....	Iowa City, Ia.
Pi - Kansas State College.....	Manhattan, Kas.
Rho - University of North Carolina.....	Chapel Hill, N. C.
Sigma - Northwestern University.....	Evanston, Ill.
Tau - University of Florida.....	Gainesville, Fla.
Upsilon - Milwaukee State Teachers College.....	Milwaukee, Wis.
Phi - Syracuse University.....	Syracuse, N. Y.
Chi - University of California at L. A.....	Los Angeles, Calif.
Psi - Santa Barbara State College.....	Santa Barbara, Calif.
Omega - Drake University.....	Des Moines, Ia.
Alpha Alpha - University of Illinois.....	Urbana, Ill.
Alpha Beta - Pennsylvania State College.....	State College, Pa.
Alpha Gamma - Purdue University.....	Lafayette, Ind.
Alpha Delta - San Diego State College.....	San Diego, Calif.
Alpha Epsilon - Louisiana State University.....	Baton Rouge, La.
Alpha Zeta - University of Kentucky.....	Lexington, Ky.
Alpha Eta - University of Kansas City.....	Kansas City, Mo.
Alpha Theta - University of Omaha.....	Omaha, Neb.
Alpha Iota - Ohio State University.....	Columbus, Ohio
Alpha Kappa - University of Southern California.....	Los Angeles, Calif.
Alpha Lambda - North Dakota Agricultural College.....	Fargo, N. D.
Alpha Mu - William Jewell College.....	Liberty, Mo.
Alpha Nu - St. Norbert College.....	West De Pere, Wisc.
Alpha Xi - Washington State College.....	Pullman, Wash.
Alpha Omicron - Southern Methodist University.....	Dallas, Tex.
Alpha Pi - University of Miami.....	Coral Gables, Fla.
Alpha Rho - University of Texas.....	Austin, Tex.
Alpha Sigma - University of Nebraska.....	Lincoln, Neb.
Alpha Tau - Butler University.....	Indianapolis, Ind.
Alpha Upsilon - DePauw University.....	Greencastle, Ind.
Alpha Phi - Washington University.....	St. Louis, Mo.
Alpha Chi - Massachusetts Institute of Technology.....	Cambridge, Mass.
Alpha Psi - Lehigh University.....	Bethlehem, Pa.
Alpha Omega - Kirksville College of Osteopathy & Surgery.....	Kirksville, Mo.
Beta Alpha - University of Wichita.....	Wichita, Kans.
Beta Beta - Michigan State College.....	E. Lansing, Mich.
Beta Gamma - Central Y. M. C. A. College.....	Chicago, Ill.
Beta Delta - East Texas State Teachers College.....	Commerce, Tex.