

TORCH AND TREFOIL

Published by
Alpha Phi Omega

Vol. 13

DECEMBER, 1938

No. 4



TORCH and TREFOIL

The Magazine of
Alpha Phi Omega
National Service Fraternity

Issued regularly four times a year in
October, December, March and May.
Subscription price 50c a year

Entered as second class matter February 5,
1938 at the post office at Kansas City, Mo.,
under act of March 3, 1879.

Office of Publication
407 Land Bank Bldg.
Kansas City, Missouri

Theo. R. Pfalsgraf.....Editor
Sidney B. North.....Business Manager

National Executive Board of Alpha Phi Omega

Walter W. Head.....St. Louis, Mo.

National Honorary President

H. Roe Bartle.....Kansas City, Mo.

National President

William J. Campbell.....Chicago, Ill.

National First Vice-President

Byrnes MacDonald.....New York, N. Y.

National Second Vice-President

Sidney B. North.....Kansas City, Mo.

National Secretary

Dr. Edwin C. Johnson.....Chicago, Ill.

National Treasurer

T. W. Lacy.....Kansas City, Mo.

National Field Representative

Theo. R. Pfalsgraf.....Los Angeles, Calif.

Editor "Torch and Trefoil"

Dean Francis M. Bacon.....Los Angeles, Cal.

Carl S. Bauman.....St. Louis, Mo.

George H. Charno.....Kansas City, Mo.

Fred G. Davie.....Lincoln, Nebr.

Dean Raymond O. Davies.....Chicago, Ill.

C. M. Fennell.....Chicago, Ill.

James P. Fitch.....Dallas, Texas

Harry C. Good.....Moline, Ill.

Dr. M. C. Hayes.....DeKalb, Ill.

Frank R. Horton.....Easton, Pa.

Dr. Louis H. Renfrow.....St. Louis, Mo.

John M. Schiff.....New York, N. Y.

Fred P. Strother.....Marion, Ohio

Prof. A. L. Thomas.....Auburn, Ala.

Dr. Ray O. Wyland.....New York, N. Y.

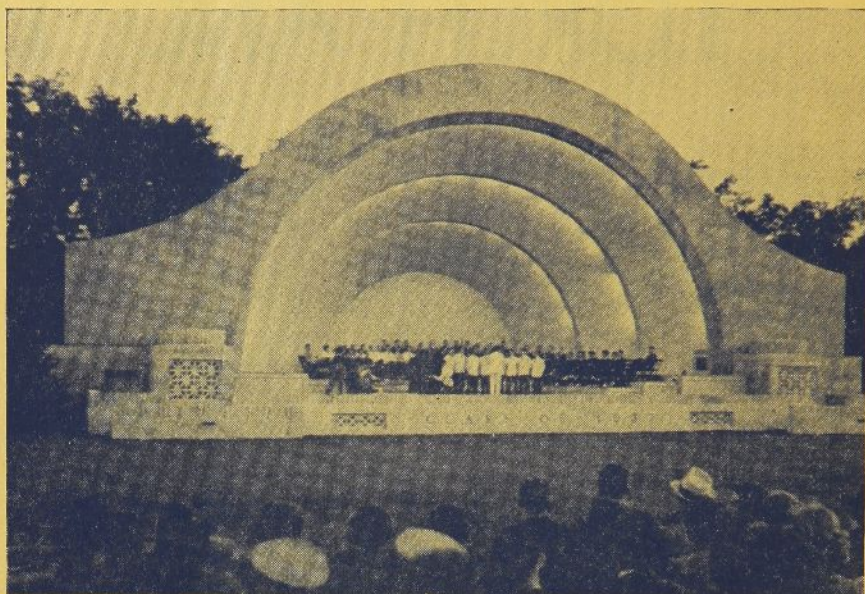
"THE ARAPOUT NEWS" APPEARS

A chapter news letter has recently been inaugurated as a part of the program of Alpha Rho at the University of Texas. The publication is devised to carry items of interest to active members, pledges, advisors and alumni of the chapter.

The name of the news letter has a real meaning and was coined by Brother Kent Teall. The word "Arapout" is composed of the initials of "Alpha Rho of Alpha Phi Omega, University of Texas."

See a copy of the first issue on exhibit at the St. Louis convention!

ALPHA PHI OMEGA'S FIRST ANNUAL INTERFRATERNITY SING AT MICHIGAN STATE



This picture was taken when the first annual Interfraternity Sing at Michigan State, sponsored by Beta Beta Chapter, was in progress May 24, 1938. The setting is the new band shell on the Michigan State College campus which was presented by the Class of 1937. (Read the full story of this interfraternity activity as told by Brother Bob Page, Historian of Beta Beta Chapter, on page six of the October 1938 issue of TORCH AND TREFOIL.)

STUDENT EMPLOYMENT BUREAU SPONSORED BY UPSILON CHAPTER

By Harvey A. Stevens, Past President

Upsilon Chapter threw its entire strength this fall into the formation of a long needed student employment bureau at Milwaukee State Teachers College. The bureau has been a great success. Not only has the public been of much help, but the school has gone far beyond our expectations in giving every possible assistance.

At the last meeting of our student governing body they voted this bureau shall become one of the few major extra-curricular activities of the college. In addition, they appropriated \$90 for the bureau's use, thereby relieving the chapter of some of the financial obligation connected with the employment service.

By October 1 we had placed about twenty-five students in part time positions. We are inclined to look forward to a most successful year. The bureau has an office on the campus, with telephone, and can be easily contacted. Both students and faculty are giving wonderful cooperation.

S. M. U. SWIMMING POOL OPENED TO SCOUTS

Alpha Omicron Chapter has undertaken a most worthy and interesting project of service. The members have proposed that the Scouts of Dallas and of five surrounding councils who do not have opportunity or facilities for swimming and life saving instruction, especially in the winter time, be invited to come to the Southern Methodist University campus and enjoy swimming and life saving in the university pool.

The chairman of the chapter's special committee on this project is Brother Billy Bratz. This good brother has also addressed notices to the Scout Executives of six councils announcing this opportunity.

Brother James P. Fitch, member of the National Executive Board and Regional Scout Executive, has given splendid cooperation in the arrangements for this project and has given it his personal and official approval.

It is expected that many of the Scouts who use the university pool will also find it interesting to visit the several departments of the school to gain some knowledge of university activities.

Seventh Biennial National Meeting Will Top All Records in Alpha Phi Omega Convention Attendance

250 Delegates Are Expected From Fifty Chapters The Country Over

Enthusiasm runs high as the time for the St. Louis convention draws near. From all indications this year's meeting will have a larger attendance than any previous convention of Alpha Phi Omega. Delegates from all parts of the United States, from the east, west, north and south, will give a true national color to the meeting December 28 and 29, 1938.

Many chapter leaders and advisors, Scout leaders and university administrators have already definitely indicated their intention of attending the National Convention. In addition to members of the fraternity, visitors will be present from nearly a score of schools where petitioning groups are now being organized.

We have every reason to expect this coming convention to be a very important milestone in the history of Alpha Phi Omega. The chapter reports of service projects will stimulate increased service in the months to come. The chapter reports on administrative policies will present ideas for the smoother operation of all units of the fraternity. National policies which will be discussed and proposals which will be acted upon by the convention delegates will offer a more universal understanding of means to carry out the objectives of Alpha Phi Omega.

All in all, this 1938 convention will be a beneficial conclave for all who attend, and will serve to accelerate the growth of Alpha Phi Omega in the future.

Each Delegate Will Have Definite Responsibility

Every chapter representative who attends the convention will have a real part in planning the future development of Alpha Phi Omega. Ten major committees will be appointed to make for expediency and democracy at the convention. Each committee will study its particular phase of the Fraternity activities and make a formal report for the consideration of the entire assembly.

The following is a list of the committees which will be used:

1. Aims and Objectives Committee—
To study the Service Program of Alpha Phi Omega.
2. Chapter Administration Committee—
To study chapter administration and submit a model chapter constitution and by-laws.

3. Editorial Board—

To study the publications of the fraternity and make recommendations for improving the TORCH AND TREFOIL, the TATTLER, and the MANUAL OF SERVICE.

4. Membership Committee—

To study ways of enlarging the membership of the chapters, means of attracting new members, and the enlargement of the PLEDGE MANUAL.

NO. 1 HEADLINER



Walter W. Head

President of the National Council,
Boy Scouts of America

This inspiring leader of the Boy Scouts of America, who for twelve years has served as President of the National Council, will be the principal speaker at the National Convention of Alpha Phi Omega in St. Louis during the coming Christmas holidays. Probably no man in America is more deeply loved and more highly respected by men and boys alike than Walter W. Head. His leadership has been a major factor in the advancement of Scouting in the United States and throughout the world. His sympathetic interest and cooperation in Alpha Phi Omega has been a source of inspiration to the National Officers of the fraternity through the years. Brother Head is an honorary member of Alpha Phi Chapter at Washington University and serves as Honorary National President of the fraternity.

We are extremely fortunate in having secured Brother Head to address the banquet session of our 1938 convention, December 28.

5. Ritual Committee—

To study the pledging and induction ceremonies and make recommendations concerning them.

6. Awards Committee—

To study the AWARD FOR DISTINGUISHED SERVICE and make recommendations concerning this and other awards.

7. Extension Committee—

To study means of extending the benefits of Alpha Phi Omega to other eligible schools.

8. Faculty Advisors Committee—

To study the cooperation of faculty advisors in the chapters and make recommendations for further service by the faculty.

9. Scouting Advisors Committee—

To study the cooperation of Scout Executives and other Scouters in the chapter program and make recommendations for further service by these advisors.

10. Constitution and By-Laws Committee—

To study the proposals for changes in the National Constitution and By-Laws and make recommendations concerning them.

Group Discussions on Program

The delegates at the National Convention, both students, faculty and Scouters, will be divided into five discussion groups during a certain period to study the service program of the fraternity and consider plans for increasing the usefulness of Alpha Phi Omega on every campus. Members from schools of similar enrollment and curricula will be in the same group so the discussions may be of the highest value to everyone who participates. The program committee has invited the following brothers to serve as chairmen and advisors to the groups:

Group	Chairman	Advisor
A	Roy Shapiro (Upsilon)	Dr. M. C. Hayes (Eta)
B	Eric Wadleigh (Alpha Gamma)	Prof. A. L. Thomas (Delta)
C	Joseph Green (Beta Iota)	Dean L. M. Bradfield (Alpha Theta)
D	Bob Kniffin (Alpha Rho)	Prof. Gurth Whipple (Phi)
E	Arthur Matheson (Alpha Alpha)	Dr. A. S. Edwards (Beta Zeta)

Officers and Committeemen Groups

It is deemed wise to give opportunity at the convention for group meetings of chapter officers, advisors

(Continued on Page 12)

ALUMNI ASSIST IN BETA IOTA CHAPTER

By Bernard Vachss, Alumni Secretary

All of the alumni of this chapter have the welfare of the fraternity at heart and have proved it by their constant attendance and aid at all of our functions. An extensive program has been conducted to keep the alumni in closer contact with the chapter.

We are proud to report the following:

Brother Murray Sigel was graduated in June 1937 and now occupies a position in one of the largest importing companies in New York City.

Brothers Harold Friedman and George Epstein are now students at the New York College of Dentistry.

Brothers Wilbur Shapiro, Edwin Hirschberg, Robert Loeffler, Murray Rubin, Harold J. Friedman and Murray Commassar have entered the field of business and are as active as possible in the work of the chapter.

Brother Ingram Fisher has been graduated but still maintains an active participation in chapter affairs. He is now a graduate student at the university.

ALPHA ETA'S PLEDGES PLAN OPEN HOUSE

By Bernard Koehler, Secretary

The present pledge class of Alpha Eta Chapter, composed of fifteen men, is working on plans for an open house to be held at the university for all high school seniors graduating at the end of the first semester. The finished plans will be presented to Dean Glenn G. Bartle for approval and suggestions. This is the pledges' principal service project which they must complete before being eligible for active membership.

Father and Son Meeting

A special meeting, to which members of Alpha Eta Chapter will bring their fathers, will be held in the administration building at KCU, December 5. Brother Robert Graf-rath, chairman of the chapter's program committee, is in charge of the arrangements for the meeting.

AN INTERNATIONAL LEADER AT THE ST. LOUIS CONVENTION



R. L. (Bob) Hill

Past President of the Rotary Clubs of the World

When Beta Eta Chapter of Alpha Phi Omega was organized last spring, the undergraduate charter members were fortunate in securing as their senior faculty advisor this international leader, Robert L. Hill. Vocationally, Brother Hill is Director of Alumni Activities at the University of Missouri. A large proportion of the forty thousand Missouri alumni know him and call him "Bob."

His energetic leadership in the world's largest association of service clubs, Rotary International, resulted in his election as international president in 1934. Through this association a large portion of the world's 188,000 Rotarians in eighty countries know him—at least by name.

Brother Hill's vast experience in community service, his keen personality and his joy of association with university students and alumni will make his participation in Alpha Phi Omega's national convention especially valuable and interesting to the delegates who attend. He will address the banquet session, December 28.

ALPHA EPSILON EXPANDS

By Donald B. Armstrong, Historian

On the campus of Louisiana State University, Alpha Phi Omega is at present in the midst of a drive for new members. We recognize the need for a sizeable membership to carry on the objectives of the fraternity at LSU and we propose to make steady expansion. A smoker was held recently at which prospective new members were given an explanation of the program and

policies of Alpha Phi Omega. From the interest shown, we expect to pledge a goodly number of men before the Christmas holidays.

The service projects of Alpha Epsilon are in the hands of the several chapter committees, and we have plans to gradually expand our activities in all four fields of Alpha Phi Omega's program.

COUNCIL PRESIDENT ADDRESSES CHAPTER

By William S. Parks, Jr., Historian

The DePauw Chapter of Alpha Phi Omega is in full swing in its service program for the 1938-39 season, both on the campus and in the community of Greencastle.

Alpha Upsilon Chapter is composed at present of 35 active members and 19 pledges.

The president of the local Scout council, Mr. Sam Hanna, was invited to address the chapter and explain the needs of the council which Alpha Phi Omega could fill. Following Mr. Hanna's presentation the chapter launched its year's community service. As an aid to Scouting, members of Alpha Upsilon are serving local troops as advisors, instructors and examiners. Several brothers are serving as Assistant Scoutmasters of troops in the small communities near Greencastle.

In community service, the chapter took charge of the collection of funds for the annual Red Cross roll call between Armistice day and Thanksgiving day this year.

We are building a council ring and improving a picnic ground for the use of local Scouts and Scouters and our plans call for the continuance of our annual Scout leadership conference in the spring.

Distribute Maps

At the opening of school this past fall, Alpha Upsilon Chapter prepared an illustrated map of the campus (13 by 22 inches in size) and presented a copy to each new student. This was in addition to regular information service and other helps which are provided each year for freshmen orientation. We will also conduct our annual ping pong tournament in the spring and have charge of the program of several chapels.

EDITORIAL FROM THE SYRACUSE "DAILY ORANGE"

(This is a full reprint of the editorial which appeared in the student newspaper of Syracuse University, concerning Phi Chapter's campus clean-up the morning after the Syracuse-Colgate football game of 1938. It indicates the true spirit of Alpha Phi Omega.)

Literal Cleanup

No better evidence of Syracuse spirit has been offered in 40 years of Colgate football than that of Alpha Phi Omega Sunday morning. It was a spirit symbolic of true Syracusan citizenship, a spirit so manifestly unselfish that it well deserved the commendation by Dean William H. Powers in Chapel.

When the sun that set orange on a Colgate victory the night before arose a brilliant yellow on Sunday morning, the Syracuse campus was littered with debris of 35,000 celebrants. While those celebrants slept and sobered after a riotous night of merry-making, Alpha Phi Omega went out and cleaned up the campus.

They cleaned up literally—papers, wrappers, streamers—left in the wake of the crowd that filled Archbold stadium. When Crouse chimes pealed for Chapel at 10:45, the greens were clean, the old oval spotless. The campus bore not a single evidence of the madness the day before.

What is almost as admirable as the deed of Alpha Phi Omega is the spirit with which it was accomplished. There was no ballyhoo and no publicity commiteeman with a Daily Orange statement. It was a welcome diversion from the figurative political cleanups of other honorary organizations of more personal coloring and less community pride.

The University owes a debt of respect to Alpha Phi Omega. Syracuse spirit is fun when it means singing and cheering. It's work when it means sweeping up the campus. But it's better spirit.

HANDLE RED CROSS DRIVE AT K. U.

The members of Lambda Chapter assisted in a major way in the annual Red Cross roll call at the University of Kansas, November 14 to 25. The chapter worked particularly in soliciting members of the social fraternities on the campus.

PHI CLEANS UP SYRACUSE CAM- PUS AFTER COLGATE GAME

By Arthur T. Wilcox, Historian

The crowning event of the past few weeks in Phi Chapter was the campus clean-up which we held the Sunday morning after the Syracuse-Colgate football game. The campus always looks like a garbage pit after every Colgate game, but this year, when Syracuse won for the first time in so many years, it was really a mess.

The members were provided with large sacks and made a systematic "tour" of the campus, taking all debris as they went. University trucks were at hand to haul away the tons of stuff which were picked up.

Our efforts met with so much success that the entire editorial column, "Beating the Drums," in the DAILY ORANGE was devoted to us the following day, and as a final topping, Dean Powers of the Chapel personally commended us at the morning services. It was a very worthwhile and interesting project. We gained much satisfaction and considerable good publicity from it.

BETA DELTA COMPLETES FIRST YEAR

A "Baby" in 1937, a Seasoned Service Organization in 1938

By Leon Rutland, Jr., Historian

Beta Delta Chapter of Alpha Phi Omega at East Texas State concluded November 7 its initial year of service in the national fraternity. During this single year it has come to be recognized on the campus, in the community, and even in surrounding towns as a service organization.

Beta Delta has had an information booth at homecoming; served as guides at special meetings on the campus; furnished assistant Scoutmasters to the local troops from its pledges; conducted field meets for the Scouts of the Lone Star Area; helped provide baskets for the poor of Commerce at Christmas; helped the local Scouts organize a Sea Scout ship, and made a diving helmet for the Scouts; erected a sign during the football season telling how many days until East Texas beat such and such a team that won favorable comment; acted as officials at a district Scout water carnival, as Beta Delta Chapter has several members who hold Red Cross senior life guard and life guard examiner certificates; served as counsellors and provided a prosecutor and city judge when the Scouts took over the city for a day; and rendered a real service to East Texas State and Commerce when they gave them the opportunity of hearing National President H. Roe Bartle of Alpha Phi Omega in a special assembly.

Outstanding projects planned during the next few weeks by Beta Delta include free moving picture shows for the underprivileged children of the community, free moving pictures of sports and other interesting topics for the Scouts of this district, signs on the highways leading into Commerce advertising the town and college, and assigning their pledges to helping care for the local Scout camp.

Honoring their anniversary, Beta Delta had a ten day celebration including participation in a state conclave at the University of Texas Saturday and Sunday, a meeting



These pictures indicate the work done by Phi Chapter in cleaning up the Syracuse campus the morning after the Syracuse-Colgate football game this fall.

(Continued on Page 8)

WATCH ETA CHAPTER AT THE ST. LOUIS CONVENTION

Word has been received from very reliable sources within Eta Chapter at Northern Illinois S. T. C. that the membership will arrive at St. Louis practically en masse for the National Convention. Fifty members of Eta (the 1936 top chapter of the fraternity) will file into

the convention hall on the morning of December 28, determined to give of their very best for the benefit of all other delegates and likewise to take away some ideas for the future betterment of their own service program.

See Eta in action at St. Louis!

Exhibits at the National Convention

The special exhibits committee of Alpha Phi Chapter (hosts at the coming National Convention) is arranging the finest exhibits ever displayed at an Alpha Phi Omega convention. The items exhibited will give a comprehensive and colorful description of chapter service projects, chapter and national publications, chapter and national records and other factors which affect the progress and growth of our fraternity.

Assistance of Historians Needed

The exhibits committee has addressed a letter to the Historian of every chapter in the fraternity requesting certain material which will be valuable in telling a visual story of our activities. You will want to make sure that your chapter is properly represented in the convention exhibits by promptly complying with the request of the committee.

The following is a list of items which have been suggested as interesting and valuable in the convention exhibits:

- School pennants (be sure your pennant is on the walls of the assembly hall on the morning of December 28).
- Pictures of Alpha Phi Omega men in action on service projects.
- Chapter Scrapbooks.
- Letters of thanks received for service rendered.
- Newspaper clippings about projects.
- Copies of printed materials used by chapters, such as:
 - Registration cards used in Scout roll call,
 - Printed programs used at convocations and other meetings,
 - Chapter letterheads, etc.
- Identifications used on projects (armbands, badges, etc.)
- Pledge plaques (or paddles).
- Illuminated emblems (coat of arms and badge).
- Chapter banners or pennants.
- Secretary's record books.
- Treasurer's system of records.
- Yearbook showing Alpha Phi Omega page.
- Catalogue showing Alpha Phi Omega description.
- Freshman handbook showing Alpha Phi Omega description.
- Other items as deemed valuable by your chapter.

Send Material In Advance

Do not wait until you come to St. Louis to bring your exhibit material with you. Send your material now, so the exhibits committee will have an opportunity to assemble it before the convention opens and display it to the best advantage.

Send your exhibit material to:

Brother Henry J. Loewenstein
Chairman Exhibits Committee
6402 Enright, St. Louis, Missouri

Every item which you send will be carefully handled and will be safely returned to you after it has served its purpose at the convention.

HE IMPLORES "KEEP THE COLLEGE CAMPUS OF AMERICA AMERICAN"



Homer L. Chaillaux

*Director of the National Americanism
 Commission of the American Legion*

This important leader in the national life of America will be on the program of Alpha Phi Omega's seventh biennial convention. He has enthusiastically agreed to speak on the banquet program of the convention, after having been personally invited by President H. Roe Bartle.

Mr. Chaillaux is a Hoosier by birth and a Californian by adoption. He was a student at Indiana University when the United States declared war on Germany in 1917. He immediately left his campus to enroll in his country's service. He served 27 months in France, and upon returning to the United States, immediately affiliated himself with the American Legion.

In 1934 Mr. Chaillaux was appointed National Americanism Director of the American Legion, and since that time he has travelled more than 300,000 miles in directing and promoting Americanism activities. In this position, Mr. Chaillaux has been the spearhead of the Legion's war against all subversive and un-American activities. He has won national recognition as a foe of Communism, Fascism, Nazism and other alien "isms." He is co-author of "Isms," the Legion's compilation of information on radical activities in the United States. He has also won reputation as an authority on flag education and on the United States Constitution.

Under his administration there has been a great increase in American Legion sponsorship of Boy Scout Troops. More than 3,000 posts now sponsor troops, a jump of 1,000 within three years. He is a member of the National relationships committee of the Boy Scouts of America.

It is a distinct honor for Alpha Phi Omega to have Mr. Homer L. Chaillaux appear on the program of our National Convention, speaking on a subject which so closely relates to our fraternity program, "Keeping the College Campuses of America American."

MICHIGAN STATE CHAPTER HAS BUSY PROGRAM

*By Paul Huxmann, Corresponding Secretary
Beta Beta Chapter*

The campus newspaper at Michigan State recently described very adequately the progress of our chapter when it printed the phrase "APO on the Go."

Our program began during Freshman Week. We aided the administration in two ways: (1) We had a man in each dean's office all day, to assist him in any manner possible; (2) We had men ushering at the numerous convocations planned for freshman orientation.

Shortly after registration we assumed the task of visiting all the freshmen boys near the campus living in private homes. This visitation had two purposes: (1) To assist the Dean of Men in getting information about each boy concerning living conditions, financial problems and study difficulties; (2) To help the boys acquaint themselves with campus life by suggesting good study methods, and possible extra-curricular activities. Each chapter member was assigned to visit about thirty-five men.

Our next campus project was to handle the sale of the new student directory. We contracted to sell them over a period of two weeks, at a profit to us of \$0.02½ per copy. We expect our final sale to amount to about 2,000 copies. The requirements of an intensive selling campaign during the first few days after the directory was released necessitated a fine organized effort. Our committee and members made it a success.

In the early winter we plan to take part in the annual campus vocational guidance conference sponsored by the college. Successful men representing many fields of endeavor will be on the campus for a day to discuss their vocations with interested students. Each discussion group is headed by a chairman chosen from among the campus organizations. We will have one or two men acting as chairmen.

We have participated in two state-wide projects this fall. The first was a conference of librarians from all parts of the state. We had an information and service desk set up in the midst of ac-

ALPHA PI PUBLISHES STUDENT HANDBOOK



The 1938-39 "M Book" of the University of Miami was compiled, edited, published and distributed by Alpha Pi Chapter of Alpha Phi Omega. The members of the chapter spent many hours during the summer months assembling the material for the booklet, and the finished product is a very attractive and comprehensive booklet. It contains much information that is invaluable to freshmen in understanding their responsibilities as university students and much which is likewise helpful to upperclassmen.

Some of the important sections of the M Book are: List of the trustees, administrative officers and faculty; president's message; university calendar; Freshmen rules; "do's and don'ts," general information; list of student government and class officers; student constitution; diagram showing floor plan of the university buildings; list and description of campus organizations; rushing rules; football schedule and university songs and yells.

The second was a conference of high school principals of the state which has as its purpose the tying together of high school and college activities. We conducted campus tours and had a general information desk for the convenience of the visitors.

Our schedule of meetings includes an open meeting every other Thursday. Some of the attractions to date have been a speaker on the hostel movement and an inspection tour of the nearby state police headquarters. These meetings have been instrumental in bringing out new pledge material.

FIVE THOUSAND ATTEND MU CHAPTER'S ANNUAL BOY SCOUT DAY PROGRAM

Homecoming Was the Occasion for the Scout Participation

By Walter Smith, President

The twelfth annual Boy Scout Day at Indiana University was sponsored Saturday, October 22, 1938, by Mu Chapter of Alpha Phi Omega and the White River Boy Scout Council. Approximately five thousand Scouts participated in the program.

The chapter operated a refreshment stand in the university field house throughout the day. Profits from the stand are used toward a \$75 scholarship award which is presented each spring to an Indiana Eagle Scout.

The following special committees of Mu Chapter carried out the arrangements for the Scout Day program: registration of visiting Scouts, Montford Mead and Ben O. Barr; Campus tours, John Vanatta and Harold Wesselman; signs, Robert L. Stultz; parade, J. Lloyd Fitzpatrick, James Huston and Albert Aiken.

The Program of the Twelfth Annual Scout Day at Indiana

Throughout Morning - Reception in field house.

8 to 10 A. M. - Swimming (Boy Scouts only), men's pool, gymnasium.

9 to 11 A. M. - Campus tours, starting from field house at 9:15, 9:30, 9:45, 10:00, 10:15, 10:30, and 10:45.

10 to 11 A. M. - Motion pictures by extension division - Auditorium of Chemistry Building.

11 to 11:30 A. M. - Program in field house; concert by Indiana band; welcome by Z. G. Clevenger, Director of Athletics, and Coach Bo McMillan; talk by W. W. Shaver, Deputy Regional Executive, Boy Scouts of America; wrestling and gymnastic show.

11:30 A. M. - Luncheon, refreshment stand, field house.

11:30 A. M. - Meeting of all Scoutmasters with parade marshall - Southwest door of men's gymnasium.

12:00 Noon - Call for parade, front of men's gymnasium.

12:15 to 1 P. M. - Parade for all organized Scouts.

1 to 1:30 P. M. - Review of all uniformed Scout Troops in stadium.

1:30 to 2 P. M. - Football game preliminaries.

2 to 4:30 P. M. - INDIANA VS. KANSAS STATE FOOTBALL.

4:30 P. M. - Adjournment.

THESE THREE NATIONAL DIRECTORS OF THE BOY SCOUTS OF AMERICA WILL HAVE MAJOR ROLES IN THE NATIONAL CONVENTION OF ALPHA PHI OMEGA



Harold F. Pote

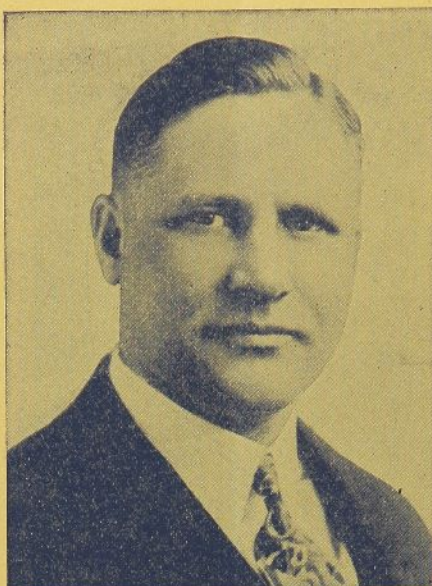
*National Director of Personnel
Boy Scouts of America*

Alpha Phi Omega is to be honored at the St. Louis convention by having Brother Harold F. Pote participate throughout the full period of the meeting. As his particular responsibility on the convention program, he will deliver an address at the noon luncheon on December 28. This divisional head in the Boy Scouts of America has always extended fullest cooperation and support to Alpha Phi Omega and has assisted in many ways toward the progress of our fraternity.

As the National Director of Personnel Brother Pote has, during the past eight years, greatly systemized the personnel procedure of the Scout movement in America, dealing both with volunteer and professional Scouters. His sincere interest in men and his keen analyses of human problems have made Brother Pote highly valuable in his work with the Scout leaders throughout the land.

Delegates at the coming National Convention who wish to gain a full understanding of the opportunities and responsibilities in the professional service of Scouting will be given a chance for personal interviews with the National Director of Personnel during the convention period.

The interest and devotion which Brother Pote has given to Alpha Phi Omega makes it significant that he appear on our convention program and give of his experience for the benefit of all chapter delegates. We may look forward with real anticipation to our contact with Brother Pote on December 28 and 29.



Dr. Ray O. Wyland

*National Director of Education and
Relationships, Boy Scouts of America*

The sincere interest of this good brother in the program of Alpha Phi Omega has been manifest through the entire thirteen years' growth of the fraternity. Brother Wyland is a charter member of Alpha Chapter at Lafayette College and he participated in the first official meeting on that campus which launched this national service program.

Brother Wyland is well known in Alpha Phi Omega. He has played a major role in every National Convention and has had personal contact with many chapters throughout the United States. He is loved and respected as a guiding spirit in our fraternity.

As National Director of Education and Relationships of the Boy Scouts of America, Brother Wyland is in daily contact with university and college officials and leaders of civic and religious bodies. He never misses an opportunity to boost Alpha Phi Omega, and his contacts have laid the foundation for several new chapters.

At the National Convention in St. Louis Brother Wyland will deliver a keynote address at the opening session, and also he will serve as chairman of a discussion group composed of community projects committeemen. His generous spirit and his keen interest in Alpha Phi Omega will be in evidence at this meeting. His understanding of national and world problems will be of infinite value to Alpha Phi Omega as the fraternity plans its future course.



Frank W. Braden

*Assistant National Director of Senior Scouting,
Boy Scouts of America*

This enthusiastic brother of our fraternity has had varied experiences as a Scout and Scout leader. He began as a Scout at twelve years of age and attained the Eagle rank. After graduation from Indiana State College, he taught in the public schools at Terre Haute, Indiana, for three years before entering Scouting professionally. While at Terre Haute he served as Scoutmaster and Assistant Camp Director.

Throughout his experiences both as a volunteer and professional Scouter, Brother Braden has had a special interest in older boys and has assisted in providing opportunity and incentive for them to remain in Scouting through their adolescent years. In this connection he has conducted Sea Scout camps and cruises, wilderness camps, and canoe trips in the Councils he has served. He organized the South's first Boy Scout Press Club at Birmingham and likewise the South's first lodge of the Order of the Arrow, national campers' honor society. He graduated from the first National Sea Scout Directors School in 1932.

As Assistant National Director of Senior Scouting, Brother Braden is closely related to all phases of the program and his experiences in all of these fields lends value to his services in their behalf.

His cooperation with Alpha Phi Omega has been of lasting benefit to the fraternity. We have a wonderful opportunity ahead in having Brother Braden participate in the St. Louis Convention and in hearing his address at the noon luncheon on December 29.

BETA DELTA'S FIRST YEAR

(Continued from Page 5)

Tuesday, an outing Wednesday, a theater party Thursday, football game and homecoming Friday, dance Saturday, church Sunday, and banquet Monday, November 7.

Alpha Phi Omega is the only

campus organization that has a permanent post-office box in the registrar's office at East Texas State. Outside the meeting room is a bulletin board containing clippings from campus newspapers about what is happening in other chapters, information from the National Office such as "The Tattler" on the na-

tional convention, and notices about what Beta Delta is doing. This bulletin board is read by both members and non-members, thus giving Beta Delta another channel through which to inform students of its work and the work of the national fraternity.

VITAL STATISTICS

Brother Edwin C. Johnson, National Treasurer of Alpha Phi Omega and pastor of the Pilgrim Congregational Church in Chicago, has enthusiastically announced the arrival of a daughter, Judith Eileen, on November 12, 1938.

The TORCH AND TREFOIL extends heartiest congratulations to Brother and Mrs. Johnson.

PSI CHAPTER "HUNTS" LOST LIBRARY BOOKS

Other Activities Fill Well Rounded Program at Santa Barbara

By George Guntermann, President

As a service to the library of Santa Barbara State College, Psi Chapter recently sponsored a drive to bring in all stray library books. An intensive effort was made to locate books which had been checked out of the library and had not been returned. The drive was successful, was valuable to the college and was much appreciated by the librarian.

Commodore Thomas J. Keane, National Director of Senior Scouting, Boy Scouts of America, gave a lecture on the Santa Barbara campus recently under the auspices of Psi Chapter.

The chapter has assisted in many other campus activities this fall, and entered a float in the homecoming parade.

Several social activities are planned for the future. In February, the chapter is sponsoring a council-wide Senior Scout dance. We have also planned an alumni picnic for March, an active member picnic for April and a formal invitation dinner for May.

On November 19 our chapter had the pleasure of meeting and entertaining Brother Howard Cooper, corresponding secretary of Alpha Delta Chapter of San Diego. We discussed with him many interesting fraternity problems and talked of the possibilities of Alpha Delta, Chi, Psi and Alpha Kappa Chapters' meeting sometime in the near future for a Southern California inter-chapter conference.

To Revive Stanford Chapter

Also, during Brother Cooper's visit we considered ways and means of reorganizing Zeta Chapter at Stanford University.

DELTA CHAPTER CARRIES ON

By George H. Perry, Alumni Secretary

Alpha Phi Omega performed its orientation activities in an especially fine manner this past fall. Information booths were operated at several places on the campus, and the freshmen were able to secure the information they desired. The registrar expressed his appreciation for the assistance rendered by Delta Chapter in this project. Some of the members sold Blitz cloths to R. O. T. C. students and helped raise money for projects to be sponsored later in the year.

Assist in H. S. Play Day

Our chapter furnished judges, umpires and other officials for the High School Play Day at Auburn, sponsored by the intramural sports department.

As in past years, we are awarding six trophies to the outstanding freshmen in certain minor intramural sports. This creates interest among the freshmen, and tends to maintain the interest among the upperclassmen.

Several new projects have been outlined for the future. One of the most important of these is the formation of emergency service units such as volunteer firemen and policemen, to be of assistance in the City of Auburn whenever the occasion arises.

THE ONWARD MARCH OF ALPHA ALPHA

By Arthur Matheson, Past President

Alpha Phi Omega at Illinois started out its year's activities this past fall by handling the annual Scout Day, September 24. More than eight thousand Boy Scouts and three thousand Girl Scouts attended a university football game as guests of the athletic association. Alpha Alpha Chapter assisted by registering the Scouts and issuing tickets to the Scouters. During the day several groups of Scouts were escorted on tours of the campus by members of the chapter.

Twenty-one new members were pledged early in the fall. A goodly number of these men were contacted at the freshman activity night where the chapter had a booth with members on duty to explain the purpose of the fratern-

nity to the interested freshmen.

On November 5 the chapter held its annual fall over-night hike at Camp Drake about 35 miles from the campus. It was a very interesting and successful outing.

At the Illinois State Press Conference on November 3 and 4, Alpha Alpha Chapter helped during registration of visitors. This was the first year the chapter has participated in this activity, but the job was done to the full satisfaction of the sponsors.

A reception was given by Alpha Phi Omega and Alpha Pi Delta (Girl Scout organization) on November 14 for Monroe Smith, National Director of the American Youth Hostels Association. The reception followed an address by Mr. Smith which was sponsored on the campus by the athletic association.

"HE BRINGS 50 MEN TO CONVENTION"



Dr. M. C. Hayes

Veteran Senior Faculty Advisor of Eta Chapter

It is largely through the energetic leadership and the deep consecration of this veteran advisor that Eta Chapter has made plans to move en masse from DeKalb, Illinois, to St. Louis, Missouri, having fifty chapter delegates in attendance at the National Convention. "Doc" Hayes is well known to the Alpha Phi Omega men who attended the three previous biennial conventions because of his very active participation in those meetings. Delegates who attend their first APO convention this December have a real treat in store because of their opportunity to associate with this grand leader of Eta. He will serve as chairman of the faculty advisors' group session and as advisor to one of the program discussion groups during the convention.

Facilities of Washington University at the Disposal of Alpha Phi Omega

Washington University has a yearly registration in its thirteen different divisions of more than 7,000 students, and its faculty numbers more than six hundred.

Located on a hilltop overlooking Forest Park, its students have access to the Municipal Opera, St. Louis Zoo, Art Gallery, Shaw's Garden, and a host of first class educational institutions and entertainment features.

The first National Convention of Alpha Phi Omega was held in St. Louis at the Hotel Jefferson in 1931 before a Chapter existed here. Alpha Phi is now eagerly awaiting the arrival of the 1938 Convention and is bending every effort to make the visit of each delegate an outstanding experience.

WASHINGTON UNIVERSITY SAINT LOUIS

Office of
The Chancellor

November 17, 1938.

To Members of Alpha Phi Omega:

I have learned with much pleasure of the meeting of the National Convention of Alpha Phi Omega in Saint Louis during the coming Christmas holidays. I wish to extend sincere greetings on behalf of Washington University to the fraternity and its officers and all those in attendance. The ideals set forth by the fraternity and its attitude of cooperation and helpfulness have made it a most welcome part of our academic life. Its field of social usefulness is very broad, and one with which I am entirely in sympathy. We feel honored that the fraternity is holding its convention here, and desire to do all in our power to make it a success.

Yours very truly,

GEO. R. THROOP,
Chancellor.



GEORGE R. THROOP, PH.D., LL.D.
Chancellor, Washington University

Convention Committee Chairmen

Chancellor

George R. Throop

*Honorary Chairman of
the General Convention
Committee*

John D. Wright
Scout Executive

*Honorary Vice Chairman
of the General Con-
vention Committee*

Harry Wittler

*Chairman of the General
Convention Committee*

David Larsen

*Chairman, Registration
and Housing Committee*

Donald C. Green
Chairman, Guests
Committee

Henry Loewenstein
Chairman, Exhibits
Committee

LeRoy Sachs
Chairman, Banquet
Committee

Judson C. Green
Chairman, Publicity
Committee

Alpha Phi Chapter V Biennial Convention Phi Omega

Six Special Committees of the Host
Weeks Planning the Convention
Make the 1938 Convention
to All D



The Chairmen of Alpha Phi Chapter's

These brothers and their associates on the convention train the Alpha Phi Omega Convention in St. Louis, December 1938. Chairman, General Convention Committee; LeRoy Sachs, Guests Committee; Dave Larson, Chairman, Housing and Committee; and Henry Loewenstein, Chairman, Exhibits Committee.



E. D. NIMS
St. Louis Council
President



COL. H. D.
Scout Com

Welcomes the Seventh on of the Alpha Fraternity



Chapter Have Been at Work Many
on Details and Preparing to
on of the Highest Value
Delegates



Six Special Convention Committees

committees are now making final preparations to enter-
ber 28 and 29. They are, left to right: Harry Wittler,
Chairman, Banquet Committee; Donald Green, Chairman,
Registration Committee; Judson Green, Chairman, Publicity
Committee.



McBRIDE
missioner



JOHN D. WRIGHT
Local Council Executive

Entire Membership of St. Louis Council Awaits Arrival of Convention Delegates

To All Members, Faculty and Scouting
Advisors of Alpha Phi Omega—
Dear Friends and Brothers:

The St. Louis Council, Boy Scouts of America, its Officers and Executive Board, extend a most hearty welcome to each and every member of Alpha Phi Omega on the occasion of your attendance at the Seventh Biennial National Convention of our Fraternity to be held at the Hotel DeSoto in St. Louis, Wednesday and Thursday, December 28th and 29th.

I am sure that you will find every member of our organization from the youngest Cub to the oldest Scouter ready and willing to assist in every way to make your stay in St. Louis both enjoyable and worthwhile.

The St. Louis Council is proud of its own Chapter at Washington University and is well aware of the enviable reputation for hospitality which our city enjoys. We hope to make you feel at home and to make you conscious of our desire to be of service to you.

Sincerely yours,
ST. LOUIS COUNCIL

John D. Wright

John D. Wright
Scout Executive

Alpha Phi Chapter Officials

Dean Frank M. Debatin
Senior Faculty Advisor

S. C. Reaves
Ass't. Scout Executive
Senior Scouting Advisor

Judson C. Green
President

LeRoy Sachs
Vice-President

Sam Cohen
Vice-President

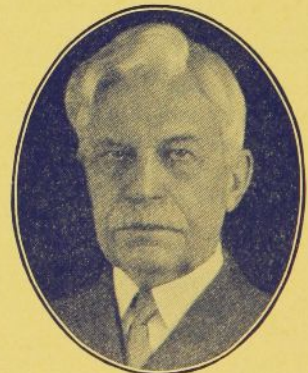
Henry Loewenstein
Secretary

Robert Tyzzer
Treasurer

Stanley Waxman
Historian

St. Louis' First Citizen, the Honorable Charles Nagel, will participate in the A. P. O. Convention as he does in the activities of the St. Louis Council and the affairs of his city, state and nation.

His achievements and his character make him respected and beloved by everyone who comes under the spell of his personality. He is a Washington University trustee, former president of the St. Louis Council and present member of its Executive Board, organizer of the National Chamber of Commerce and an 89-year young inspiration to all who meet him.



HON. CHARLES NAGEL

Secretary of Commerce and Labor,
Cabinet of President Taft. He
will address the Convention at
its noon luncheon, December 28.

THE NATIONAL CONVENTION

(Continued from Page 3)

and committeemen. This plan will offer occasion for intimate discussion of the problems and responsibilities of chapter leaders. The program committee has set up the following groupings and has invited the brothers as indicated to serve as chairmen:

Group	Chairman
Presidents	H. Roe Bartle (Iota)
Vice-Presidents and Pledge Masters	Dr. Louis H. Renfrow (Alpha Phi)
Secretaries	Sidney B. North (Pi)
Treasurers	Dr. Edwin C. Johnson (Omicron)
Historians	Arthur Wilcox (Phi)
Faculty Advisors	Dr. M. C. Hayes (Eta)
Scouting Advisors	A. N. Ekstrand (Beta Theta)
Alumni Secretaries	George M. Dean (Eta)
Membership Committeemen	T. W. Lacy (Lambda)
Program and Publicity Committeemen	George H. Charno (Alpha Eta)
Campus Projects Committeemen	Dean Arno Nowotny (Alpha Rho)
Community Projects Committeemen	Dr. Ray O. Wyland (Alpha)
Fellowship Committeemen	C. M. Finnell (Alpha Alpha)

The Cost is Low

You will be pleased with the rates secured by the host chapter for the National Convention. There will be no registration fee, merely the cost of meals and lodging is all the chapter delegates will be required to pay.

Here's the good news: The De Soto Hotel (convention headquarters) has quoted the Washington University Chapter a rate of only \$5.00 per person for meals and lodging during the entire convention period. This includes:

On December 28: Luncheon, Banquet and Lodging.

On December 29: Breakfast and Luncheon.

This will cover the complete hotel expense of each delegate from the opening of the convention 9 o'clock Wednesday morning until the closing Thursday afternoon. This rate is extremely low in comparison to the rates quoted by other St. Louis hotels, and we are indebted to Alpha Phi Chapter for its selection of the DeSoto.

Early Arrivals

For delegates who find it advisable to register at the hotel the night before the convention opens, or for delegates who stay the night after the convention closes, the

convention rate of \$1.50 for lodging will be in effect (three persons to a room, with adequate accommodations).

Residents of St. Louis

Residents of St. Louis or other delegates who have relatives or friends with whom they may stay (thus eliminating their lodging expense) will be permitted to subtract the \$1.50 lodging charge from their convention fee, paying only \$3.50 for the breakfast, luncheons and banquet.

(As announced in the TATTLER of October 12, 1938, the national Treasury will pay the hotel expense of the two official delegates from each chapter during the convention period.)

Eligibility for Voting

As has been customary in previous National Conventions of Alpha Phi Omega, the National Executive Board has set up certain qualifications for participation in the St. Louis meeting. By a referendum, early in October, the Board has passed the following regulations:

To secure eligibility to vote at the seventh biennial National Convention, each Alpha Phi Omega Chapter must:

FIRST, pay the annual registration fee for each of its active members. (This fee is a part of the regular financial set-up of the fraternity as set forth in Article III of the National By-Laws. It is due December 15.)

SECOND, submit a formal report by the Chapter Secretary, to be used as a basis for discussion at the convention. (A special form for this purpose will be provided by the National Office early in December.)

THIRD, submit a formal report by the Senior Faculty Advisor. (A special form for this purpose will be mailed from the National Office to each Senior Faculty Advisor.)

These regulations have been set up in the spirit of fairness, to make sure that all chapters which have the privilege of voting at the convention are in good standing and are properly carrying on the program of Alpha Phi Omega.

Be sure your Chapter gains the greatest possible benefit from the 1938 National Convention of Alpha Phi Omega by having the largest possible number of members present. Give of your experience for the help of other chapters, and take away as many ideas as you will for the expansion of Alpha Phi Omega on your own campus.

See you at Hotel DeSoto, St. Louis!

LARGEST PLEDGE CLASS IN HISTORY

A national record was set by Mu Chapter in its fall pledge class. Forty-one new men were inducted into pledgeship in Alpha Phi Omega at Indiana University on October 11, 1938. This is the largest pledge class ever taken in by any chapter of our fraternity. Congratulations, Mu!

AN ENERGETIC WORKER IN APO IN TEXAS



Dean Arno Nowotny

Assistant Dean of Men, University of Texas

For the past two years this understanding and loyal dean has been very closely associated with the activities of Alpha Rho Chapter at the University of Texas. Serving as Faculty Advisor, his work has had much to do with the growth of his chapter. This month Dean Nowotny enters the national picture of Alpha Phi Omega by taking a leading part in the National Convention in St. Louis. He will serve as chairman of a discussion group composed of campus projects committeemen and will address the entire assembly at the noon luncheon session the opening day of the convention.

The past interest of Dean Nowotny in Alpha Phi Omega has not been confined to his own chapter, Alpha Rho. This fall he assisted in a major way in a tri-chapter conference at Austin consisting of delegates from S. M. U., East Texas State and the University of Texas. In addition, the dean has spread the idea of Alpha Phi Omega to many other campuses in Texas by entering into correspondence with school administrators in all parts of the state. It is expected that these extension contacts which Dean Nowotny is making will soon result in several new chapters in the southland.

A CHRISTMAS DRIVE IN BETA IOTA

By Bernard Hamburger, Historian

The week after Thanksgiving, Alpha Phi Omega at New York University started a Christmas drive which will extend to vacation time. We are collecting old clothes, toys, games, dolls, rags and junk. The usable items will be renovated for distribution during Christmas week, the remainder will be sold and the proceeds used for worthy causes. All repair work is to be done in Alpha Phi Omega's office on the NYU campus.

Movie Revival Night

A three hour show including Lon Chaney's masterpiece, "The Phantom of the Opera," and Doug Fairbanks, Sr.'s great success, "Americano," headed a bill of revivals put on both Friday and Saturday nights, November 4 and 5 by Beta Iota Chapter. The affair was staged in the New York University Playhouse, with a capacity crowd of 250 people at each showing. It was very successful, giving the chapter over \$90 profit to aid in our Christmas plans.

Brother Alfred Reichbach was chairman of the committee which worked up the idea of the movie revival. The committee arranged a program that was very entertaining and enjoyable. Brother Bernard Vachss played the piano to lend the proper atmosphere to the show. Assisting him was Pledge Spencer Marsh.

Brothers Alfred Reichbach, Edward Kempler and myself took charge of the fun-making and had a riotous time both evenings.

The staffs of the several papers of the college as well as parents and faculty members were present at the show. All complimented the chapter on its fine work. The papers gave us excellent publicity before the show and enthusiastic editorial comment after the affair was over.

Aid Red Cross

The members of Beta Iota Chapter are acting as volunteers in a new drive of the American Red Cross. The basis of this drive is to establish a collegiate unit of the New York Chapter of the American Red Cross on the NYU campus. This drive was launched after four

WE POINT WITH PRIDE

A great honor came to Upsilon Chapter and to



Earl Veenendaal

two brothers in particular this fall when Brothers **Earl Veenendaal** and **Norman Graebner** were elected president and vice president, respectively, of the Senior class at Milwaukee State Teachers College. These two brothers have been exceedingly active in the affairs of Alpha Phi Omega and have played prominent roles in many activities on their campus.

The president and four past presidents of Alpha Delta Chapter at San Diego State College have outstanding records of leadership in campus activities.

Brother **George M. Ellis**, president of the chapter, is secretary of the Associated Men Students, member of Blue Key, member of Tau Delta Chi (social), editorial director of "The Axtec", college newspaper, vice president of the International Relations Club and assistant basketball manager.

Brother **Andrew Olson**, past president of Alpha Delta is president of Delvers (honorary geology club) and member of Phi Sigma Xi.

Brother **Howard Cooper**, past president, is representative to Associated Men Students, member of Blue Key, member of Delta Pi Beta (social), president of Roger Williams Club and member of the A. S. B. Rally Committee.

Brother **Gene McCormack**, past president, is A. M. S. employment chairman, member of Blue Key and president of the Christian Science Club.

years of planning and will become the vanguard of an inter-collegiate Red Cross throughout the nation's colleges. This is being done under our auspices and we have donated our office and services for the entire annual drive. Brother Edward Kempler is Alpha Phi Omega's chairman for the drive.

A DIVISIONAL CHAIRMAN REPORTS

By Murray S. Dickson, Division Nine

Interchapter relations are in excellent condition in division nine. The conclave at Austin the latter part of October was an inspiring meeting. Alpha Rho Chapter was of course in full force as host, and the other two chapters in Texas (Alpha Omicron at S. M. U. and Beta Delta at East Texas State) were well represented by seven members each. Several ideas for better interchapter relations grew out of the conclave:

Newsletter. It was decided that there should be published monthly a Division Nine Newsletter, to be sent to every member of each chapter in the division and to the presidents of all chapters in the nation and to a mailing list of persons interested in Alpha Phi Omega. It was felt that such a news letter would build a closer alliance between the chapters and tend to keep each of them on its toes by making it feel responsible for its share of the divisional program. The letter is to emphasize forward-lookingness rather than review.

Conclave. It was felt that division nine could use to good advantage an annual rather than a biennial conclave. The meeting in Austin took action directing each chapter to report after due consideration whether it favored an annual general conclave for the division or a biennial general conclave with a conference of officers and advisors meeting in the alternate years.

Expansion. It was agreed that work of expansion in this division could best be carried on cooperatively. Therefore, a manual for petitioning groups and new chapters is being prepared for use throughout the division. It is to contain excerpts from the national Manual of Service and is going to be written with emphasis on projects and problems peculiar to this area. All of the chapters in division nine will use this manual in their expansion work.

I am expecting this to be the biggest year by far for Alpha Phi Omega in division nine. We are planning to have a large representation at the St. Louis Convention.

ALPHA PHI OMEGA GROWS

Six Petitions Received in November and Many Other Groups Organizing

Intense interest in Alpha Phi Omega has been shown on many campuses this fall where chapters are not yet established. Groups have formed to make preparation for petitioning for membership in our fraternity.

In the month of November, six petitions were received at the National Office. These were all favorably voted upon by the chapters and the National Executive Board.

Two Chapters Installed

The new Beta Kappa Chapter was installed at Central Missouri State Teachers College, Warrensburg, Missouri, December 5, with National President H. Roe Bartle officiating and the degree team of Alpha Mu Chapter (William Jewell College) conducting the ritualistic work. (A complete story of this installation will be published in the March issue of TORCH AND TREFOIL).

On December 4, Beta Xi Chapter was installed at Westminster College, Fulton, Missouri. The degree team of Beta Eta Chapter (University of Missouri) and several members of Alpha Eta Chapter (University of Kansas City) assisted the National President in this installation. (Likewise a complete story of this installation will be published in the March issue).

Plans are now complete for the installation of Beta Lambda Chapter at Indiana State Teachers College, Terre Haute, on December 18. This will be in conjunction with an Indiana state Alpha Phi Omega Conference, and a joint degree team from Butler, DePauw, Indiana and Purdue will conduct the initiatory ceremonies.

The three other petitioning groups which have been approved will be installed after the Christmas holidays as:

- Beta Mu Chapter—Southwest Missouri State Teachers College, Springfield.
- Beta Nu Chapter—Northeastern State Teachers College, Tahlequah, Okla.
- Beta Omicron Chapter—Missouri School of Mines and Metallurgy, Rolla.

Other New Chapters Soon

Petitioning groups are nearing completion and will soon be ready to seek Alpha Phi Omega charters

"A LEADER FROM THE SOUTH"

**Prof. A. L. Thomas**

Senior Faculty Advisor of Delta Chapter and Member of the National Executive Board

Delegates at the National Convention in St. Louis will have the keen opportunity to associate with this consecrated faculty advisor. Brother Thomas has been a leader in Delta Chapter since its founding at Alabama Tech, and his devotion to Alpha Phi Omega has had a large part in the success of his chapter. At the convention Brother Thomas will have the important job of advisorship in one of the program discussion groups. The delegates in his group will be very fortunate in having intimate association with this good brother.

at the following schools:

- University of Washington—Seattle.
- College of the City of New York—New York City.
- Whitewater State Teachers College—Whitewater, Wisconsin.
- Washburn College—Topeka, Kansas.
- Kansas State Teachers College—Emporia.
- University of Tulsa—Tulsa, Oklahoma.
- University of Oklahoma—Norman.
- University of Oklahoma City—Oklahoma City.
- Texas Tech—Lubbock.
- Northwest Missouri State Teachers College—Maryville.
- University of Arkansas—Fayetteville.

In addition to these, inquiries have been received from many other schools and groups are in the process of organization.

The school year 1938-39 promises to be the greatest year of extension thus far in the history of Alpha Phi Omega. Growth in service as well as growth in membership has been the history of Alpha Phi Omega through the past thirteen years.

TAU GROWS IN SERVICE

By Walter R. Weber, Secretary

Since the last issue of TORCH AND TREFOIL, Tau Chapter at the University of Florida has participated in the following service activities:

The Chapter sponsored the intramural boxing matches for the athletic department for the second consecutive year. The fraternity's share of the gate receipts was used for two worthy purposes. Part was turned over to the homecoming committee to help finance the Gator Growl and the remainder was given to the Dean Tolbert Memorial Fund.

The pledges of Tau Chapter ushered at the Gator Growl and received compliments on their work from many university officials and students.

A delegation of Tau Chapter members acted as judges and in other official capacities at the local Scout swimming meet. Representatives of the chapter served as judges recently in the annual Scout camporee of the Gainesville district. At all courts of honor of this district, members of Alpha Phi Omega are on hand to assist in any way needed.

The present pledge class of Tau Chapter has assumed the responsibility of securing a permanent meeting place for the chapter. They look upon this as a lasting service, the effects of which will be carried through the years.

BETA ALPHA IS "TOPS" IN SCHOLARSHIP AT WICHITA

Although Alpha Phi Omega is essentially a service fraternity and does not place organized stress upon high scholastic attainment, the members of Beta Alpha Chapter at the University of Wichita are ever mindful of their academic responsibilities and have produced an enviable record.

For the last semester Beta Alpha Chapter of Alpha Phi Omega had the highest scholastic standing among the fraternities and sororities of the Wichita campus. This record has been achieved while the chapter is making steady and enthusiastic growth in both service and membership.

ALPHA PSI TO ERECT CAMPUS CHRISTMAS TREE

The campus of Lehigh University will shine with a huge symbol of Yuletide the latter part of this month as a result of the work of Alpha Phi Omega. A Christmas tree, thirty feet in height, is to be erected and decorated by the members of Alpha Psi Chapter.

A plan of soliciting gifts of food-stuffs, toys, clothing, etc. among the personnel of the university, to be distributed to needy persons in the city of Bethlehem, has been discussed but the details have not yet been decided upon.

The university officials have extended their cooperation to the project and have agreed to furnish the lighting fixtures and the electricity. This is a splendid means of helping spread the spirit of Christmas and to let outsiders know that Christmas for the student and faculty is something more than a vacation.

Eagle Scout Day

Alpha Psi Chapter has given consideration to sponsoring an all-Pennsylvania Eagle Scout Day in the spring. It would be the purpose of this event to bring Eagle Scouts from all parts of the state to the Lehigh Campus as guests of Alpha Phi Omega and conduct for them a program of interesting events which would tend to give the Scouts an understanding of university life.

CHI'S FELLOWSHIP ACTIVITIES

By Robert Petersen, Historian

As an important counterpart to its service projects, Alpha Phi Omega at the University of California at Los Angeles has had a very interesting fellowship program during the fall semester under the able leadership of President Hugh Dillman. The season began with a series of open meetings, which resulted in the pledging of fifteen men. Faculty members were featured as speakers.

The chapter conducted an all-day hike to Switzer's Camp on the Angeles Crest Highway on October 30. An overnight trip to Elizabeth Lake Canyon was held last month in conjunction with the class in Fundamentals of Scouting. This course is taught by Professor Paul Frampton, senior faculty advisor of the chapter.

An induction ceremony was held on November 16, with members of Alpha Kappa Chapter in attendance. Ten active and two honorary members were given the rites of the order. Most successful of the social events was a dance at the Deauville Club in Santa Monica.

Activities of the immediate future include judging at the Crescent Bay Council Pow-Wow on December 3, installation of new chapter officers and a joint initiation with Psi Chapter of Santa Barbara State College.

TEXAS INTERCHAPTER CONFERENCE IS BIG SUCCESS

Alpha Rho, Alpha Omicron and Beta Delta Participate In Annual Meeting

Through the instigation and leadership of Alpha Rho Chapter at the University of Texas, the second annual division nine conference was held in Austin, October 29 and 30. Brother Bob Kniffin, president of Alpha Rho Chapter; Dean Arno Nowotny, faculty advisor; and Brother James P. Fitch, member of the National Executive Board, deserve highest compliments and commendations on their activities in making the conference possible.

Although the customary plan in Alpha Phi Omega is to hold divisional meetings biennially in alternate years with National Conventions, the chapters in Texas deemed it advisable to have annual meetings and have arranged their plans accordingly for future years.

Two very valuable ideas have come out of the Texas conference. First, that a divisional newsletter will be published monthly and distributed to all members of all chapters in the division, with a single copy being sent to the president of every Alpha Phi Omega chapter in the United States. Second, that a manual of information for prospective chapters will be compiled and made available to schools in the division that have expressed interest in forming new chapters of the fraternity. This manual is to emphasize the policies set forth in the National Manual of Service and to include further information peculiar to Texas and nearby states.

PROGRAM

Of the Second Annual
Division Nine Conference of
Alpha Phi Omega

SATURDAY, OCTOBER 29:

2:00 P. M.

Registration Texas Union 305, Alpha Phi Omega Office. Arrange for accommodations for delegates.

2:30-5:30

S. M. U.-Texas Game.

Reserved Section 39, Rows 1-7.

5:30-6:15

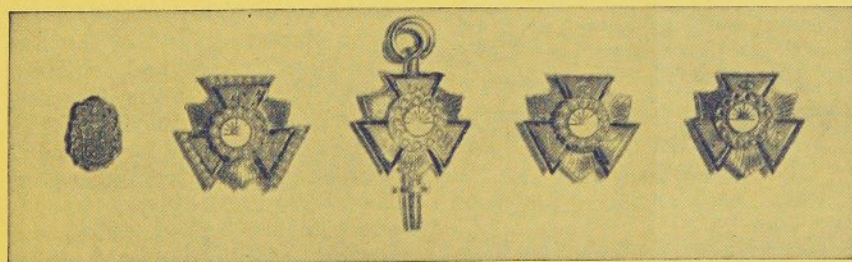
Final Arrangements for Accommodations.

Registration-Texas Union 305.

6:15-6:55

Initiation for Honorary Members and

(Continued on Page 16)



The Insignia of Alpha Phi Omega

Price List

Standard key, gold plated.....	\$ 3.25
Standard badge, gold plated (shown above, at extreme right).....	2.50
Standard badge, 10K.....	6.50
Standard key, 10K (shown above, in center).....	8.50
Standard badge, crown set pearl center plain arms (shown above, fourth from left).....	13.25
Standard badge, crown set pearl center and arms (shown above, second from left).....	24.25
Standard key, crown set pearl center plain arms.....	15.00
Standard key, crown set pearl center and arms.....	26.00
Recognition button, sterling (shown above, at extreme left).....	1.00
Recognition button, gold plated.....	1.50
Recognition button, 10K.....	2.50

THE TIME AND PLACE COMMITTEE FOR NATIONAL CONVENTION



George H. Charno



Dr. Louis H. Renfrow



Carl S. Bauman

These three members of the National Executive Board served effectively on the time and place committee for the seventh biennial National Convention of Alpha Phi Omega. They will all play prominent parts in the convention program.

ALPHA NU SERVES AS GUIDES FOR DADS AND MOTHERS

History was made at St. Norbert College on Armistice Day, 1938, when a special day was set aside for fathers and mothers of the college students to inspect the campus, the classrooms, and laboratories. Alpha Nu Chapter of Alpha Phi Omega played a prominent role in entertaining the visitors.

The following quotation from an editorial in the "St. Norbert Times" tells of the services rendered by the chapter on this occasion and expresses appreciation for Alpha Phi Omega's assistance:

Especially to be commended on its work is Alpha Nu, campus chapter of Alpha Phi Omega, national service fraternity. The members of this organization took care of the registration of all parents, conducted an information desk, and formed tours of the various exhibits, pledges of the chapter acting as guides. The organization truly fulfilled the purpose of its existence on the campus, that of service to the college and to others.

Pledges Aid Scouts

Three pledges of Alpha Nu Chapter, Francis Lee, Fred Bredael and Robert E. Lynch, Jr., have accepted responsibility as assistant Scoutmasters of Troop 43 at the St. Joseph's Orphans Home. The three additional leaders were needed because of the ever-increasing num-

ber of boys in this Troop.

Members Prominent On Campus

The men of Alpha Phi Omega are extremely active in the student affairs of St. Norbert College. Brother Anthony Chmielewski, president of the chapter, is alumni editor of the "Times" and was a member of the Dads and Mothers Day committee.

Brother Leo J. Stoecker is editor in chief of the "Times" and has an important role in the college play, "Making a Bargain" to be presented December 11.

Brother Roland Bultman is president of the newly organized Chemistry club of St. Norbert College.

TEXAS CONFERENCE

(Continued from Page 15)

Pledges, Union Building 315 and 316.

6:55-8:15

BANQUET - Junior Ballroom - Texas Union.
SUNDAY, OCTOBER 30:

8:00-8:45 A. M.

Breakfast - "Chuck Wagon" - University Commons.

8:45-10:30

Conference, Texas Union.

10:30-12:00

University Methodist Church Service.

Especially honored at the conference were nine representatives from Alpha Omicron at S. M. U., seven representatives from Beta Delta at East Texas State and forty pledges.

ALPHA DELTA HOLDS ANNUAL ALUMNI BANQUET

By Noel Bickham, Secretary

The sixth annual Alumni Banquet of Alpha Delta Chapter was held December 7 at the Hotel Churchill in San Diego. The outstanding event was the formal initiation of twelve new members. Brother George Ellis, president of the chapter, was toastmaster of the evening and several of the honored guests gave short impromptu talks.

Those who spoke included Dr. Walter Hepner, president of San Diego State College and honorary member of Alpha Delta Chapter, Jesse Ault, dean of education, C. E. Peterson, dean of men, and Elwood Barley, Scout Executive. Also present were Faculty Advisors James E. Crouch, Spencer Rogers, and George Livingston, and Scouting Advisors Stanley Millar and Robert LaMott.

Fifteen of our thirty alumni and thirty-nine active members were present.

FOUNDERS' DAY

More than forty chapters are holding special meetings and initiation ceremonies on December 16 in commemoration of the thirteenth birthday anniversary of Alpha Phi Omega.

Alpha Phi Omega Organization Chart

17

PHI CHAPTER

(Organization for 70 Men)

HONORARY MEMBERS

Scout Advisor—Leo Sandefur

Indoor Activity _____ MacAllister

Programs, Speakers, Exhibits, Gym Fests,
Scout Sunday, Dances, Etc.
Committee

Membership _____ H. A. Foote

Contact Prospective APO Men
Follow Up Inactive Men
Train Pledges in APO Ideals
Propose Honorary Members
Committee

Outdoor Activity _____ G. Fake

Campus Projects, Hikes,
Winter Activities
Committee

Utility _____ Randy Pindar

Arrange for Meeting Place
Clean Up After Meeting
Refreshments
Transportation
Committee

Fellowship _____ Al Obrist

Contact Sick Bros. Alumni
Announce Achievements of Bros.
At Spring Banquet

President _____ Geo. Krablin

Presiding Officer
Ex-Officio Member of Committees

Project Director _____ McCain

Aid
Offer APO'S Services to Campus
Notify Scribe and Phone Comm. of Meetings
Report on Proposed Projects
Coordinate Chairman Activities
Formulate Spring and Fall Programs

Vice-President _____ Robert Brown

Aid
Conduct Meeting in Absence of President
Serve as Pledge Master
Organize Ritual Team
Contact Scout Executive and Advisors

Secretary _____ Sears Merrick

Aid
Minutes
Duplicate Application File—Membership
Secure Membership Applications

Treasurer _____ Myles Esmay

Aid
Collect Dues and Keep Books
Balance Books at End of Service

NOTE: Each Chairman should call a monthly meeting of his Committee.

HONORARY MEMBERS

Senior Faculty Advisor—Prof. Gurth Whipple

Faculty Advisors: Prof. Ploger, Prof. Welch,
Dr. Illick, Prof. Poole, Prof. Hart,
Dean Spring

Historian _____ Arthur Wilcox

Aid
Correspond with National Office
Scrap Book

Presents Written Historian's Reports
At Spring Banquet
Draft This Chart After Each Election
Keep Program Chart Up-to-Date

Telephone _____ C. Delavan

Notify Faculty and Members of Meetings
Contact Brothers for Special Activities
Committee

Publicity _____ Gerry Grace

Stories and Notices in D. O.
(Send to National and City Press)
Post Meeting Notices about Campus
Establish Contacts with D. O.
Committee

Scribe _____

Notify Faculty, Members and
National of Meetings
Christmas and Summer Correspondence
To Above
Take Attendance
Frosh Orientation
Committee

Congratulations to These New Chapter Officers

Other officers chosen in the November elections have been reported too late for listing in this issue. They will be recorded in the March issue of TORCH AND TREFOIL.

DELTA

James Irvine _____ President
Arthur Harvey _____ 1st Vice-President
Morgan Bunch _____ 2nd Vice-President
Warren G. Darty _____ Secretary
Archie McGillivray _____ Treasurer
Eugene Treadway _____ Historian
George Perry _____ Alumni Secretary
Adolph Hillings _____ Sgt.-at-Arms
Prof. A. L. Thomas _____ Senior Faculty Advisor

ETA

Alfred Kupferberg _____ President
Edwin Olsen _____ Vice-President
Thomas E. Wise _____ Secretary
Robert Storm _____ Treasurer
Charles Nihan _____ Historian
George Deane _____ Alumni Secretary
Walter Lorimer _____ Sgt.-at-Arms
Dr. M. C. Hayes _____ Senior Faculty Advisor

IOTA

Merle Irwin _____ President

KAPPA

Sidney Hantman _____ President

LAMBDA

Dwight Kurth _____ Treasurer

TAU

Bob Parks _____ Treasurer
Elwood Penny _____ Historian

UPSILON

Harold Shapiro _____ President
George Schraut _____ Vice-President
Robert Hammersmith _____ Secretary
Norman Graebner _____ Treasurer
Hudson Alofs _____ Historian
Dr. Lewis B. Ward _____ Senior Faculty Advisor

CHI

Basil Frank _____ President
Mortimer Prince _____ Vice-President

Elton Barnes _____ Rec. Secretary
Charles C. Wright _____ Cor. Secretary
David Ficklin _____ Treasurer
Robert Peterson _____ Historian
Willard J. Hill _____ Alumni Secretary
Robert Dowe _____ Pledge Captain
Clinton Flynn _____ Sgt.-at-Arms
Prof. Paul Frampton _____ Senior Faculty Advisor

PHI

John Sievers _____ Treasurer

OMEGA

William Sullivan _____ Vice-President
Gerald Millsagle _____ Treasurer
David Gutshall _____ Historian
Dr. A. J. Rider _____ Senior Faculty Advisor

ALPHA ALPHA

Carl Mast _____ President
Richard Merner _____ Vice-President
Jack Simon _____ Secretary
William Leitner _____ Treasurer
Vernon Norton _____ Historian
Prof. Glenn C. Law _____ Senior Faculty Advisor

ALPHA EPSILON

Lyman Rhodes _____ President
Anthony Dernbach _____ Vice-President
Frank Walk _____ Secretary-Treasurer
Donald Armstrong _____ Historian
Jack Kron _____ Reporter
Dr. L. J. Lassalle _____ Senior Faculty Advisor

ALPHA ETA

Roland Bierley _____ President
Jim Considine _____ Vice-President
Bernard J. Koehler _____ Rec. Secretary
George W. Porter _____ Cor. Secretary
Marshall Lovett _____ Treasurer
Bill Harder _____ Sgt.-at-Arms
Robert Grafrath _____ Critic

ALPHA LAMBDA

Paul Nickel _____ Historian

ALPHA MU

Dr. F. G. Edson _____ Senior Faculty Advisor

ALPHA NU

Fred Bredael _____ Secretary

ALPHA XI

Bill Biggar _____ President
Chester Peach _____ Vice-President
Tom Sanger _____ Secretary
Brinton Sullivan _____ Treasurer
Ed Sockerson _____ Historian
Prof. E. F. Gaines _____ Senior Faculty Advisor

ALPHA OMICRON

Ross Fulton _____ Secretary

ALPHA PI

Dan Mayer _____ Historian

ALPHA RHO

Robert Kniffin _____ President
Howard Martin _____ 1st Vice-President
Hubert Durham _____ 2nd Vice-President
Elmo Fischer _____ Secretary
Jack Stoltz _____ Treasurer
Wells Brown _____ Historian
Thomas Sligh _____ Reporter
Dr. F. J. Adams _____ Senior Faculty Advisor

ALPHA PHI

Judson C. Green _____ President
Sam Cohen _____ Vice-President
LeRoy Sachs _____ Vice-President
Henry Loewenstein _____ Secretary
Bob Tyzzer _____ Treasurer
Stanley Waxman _____ Historian
H. H. Johnson _____ Alumni Secretary
Dean F. M. Debatin _____ Senior Faculty Advisor

BETA BETA

Eliot Miles _____ President
Robert Page _____ Vice-President
Robert Olson _____ Rec. Secretary
Paul Huxmann _____ Cor. Secretary
Edward Fletcher _____ Treasurer
Robert Smeltzer _____ Alumni Secretary
Prof. R. B. Daubert _____ Senior Faculty Advisor
Garth B. Oswald _____ Vice-President
Arthur Barry _____ Historian
Donald Coville _____ Sgt.-at-Arms

BETA EPSILON

John Connolly _____ Treasurer

A SONG CONTEST

Alpha Phi Omega is in need of new songs to tell of the spirit, enthusiasm and program of the fraternity, songs to be published for use in all chapters.

Songbirds, Here's Your Opportunity

A song contest is now in progress, to culminate at the National Convention in St. Louis. Compose as many songs as you like, and bring them to the convention to be judged. A special song committee at the convention will select the songs which are most adaptable for the permanent use of the fraternity.

A prize of a mahogany plaque bearing a bronze Alpha Phi Omega coat of arms will be awarded to the chapters whose members submit the best songs, as adjudged by the committee.

Bring a new Song to the Convention
Win a Plaque for your Chapter

HEADS CAMPUS COMMUNITY FUND

Brother Kent D. Shaffer, faculty advisor of Kappa Chapter, served as chairman of the community fund drive on the campus of Carnegie Institute of Technology, November 10 to 30, 1938. The appointment of Brother Shaffer to this important responsibility was made personally by Dr. Robert E. Doherty, president of the institute.

Students as well as faculty were solicited. The agencies benefiting from the campus fund include orphanages, homes for the aged, clinics, neighborhood recreation centers and other philanthropic institutions that are not supported by governmental relief funds. This is an annual campaign at Carnegie Tech.

ROSTER OF CHAPTERS

Alpha Phi Omega

ALABAMA

Delta - Alabama Polytechnic Institute..... Auburn

CALIFORNIA

Zeta - Stanford University..... Stanford

Chi - University of California at Los Angeles..... Los Angeles

Psi - Santa Barbara State College..... Santa Barbara

Alpha Delta - San Diego State College..... San Diego

Alpha Kappa - University of Southern California..... Los Angeles

FLORIDA

Tau - University of Florida..... Gainesville

Alpha Pi - University of Miami..... Coral Gables

GEORGIA

Beta Zeta - University of Georgia..... Athens

ILLINOIS

Eta - Northern Illinois State Teachers College..... DeKalb

Sigma - Northwestern University..... Evanston

Alpha Alpha - University of Illinois..... Urbana

Beta Gamma - Central Y. M. C. A. College..... Chicago

INDIANA

Mu - Indiana University..... Bloomington

Alpha Gamma - Purdue University..... Lafayette

Alpha Tau - Butler University..... Indianapolis

Alpha Upsilon - DePauw University..... Greencastle

Beta Lambda - Indiana State Teachers College..... Terre Haute

IOWA

Xi - Iowa State College..... Ames

Omicron - University of Iowa..... Iowa City

Omega - Drake University..... Des Moines

Beta Epsilon - Iowa State Teachers College..... Cedar Falls

KANSAS

Lambda - University of Kansas..... Lawrence

Pi - Kansas State College..... Manhattan

Beta Alpha - University of Wichita..... Wichita

KENTUCKY

Alpha Zeta - University of Kentucky..... Lexington

LOUISIANA

Alpha Epsilon - Louisiana State University..... Baton Rouge

MASSACHUSETTS

Alpha Chi - Massachusetts Institute of Technology..... Cambridge

MICHIGAN

Beta Beta - Michigan State College..... East Lansing

MISSOURI

Epsilon - Northeast Missouri State Teachers College..... Kirksville

Iota - Park College..... Parkville

Alpha Eta - University of Kansas City..... Kansas City

Alpha Mu - William Jewell College..... Liberty

Alpha Phi - Washington University..... St. Louis

Alpha Omega - Kirksville College of Osteopathy & Surgery..... Kirksville

Beta Eta - University of Missouri..... Columbia

Beta Kappa - Central Missouri State Teachers College..... Warrensburg

Beta Mu - Southwest Missouri State Teachers College..... Springfield

Beta Xi - Westminster College..... Fulton

Beta Omicron - Missouri School of Mines and Metallurgy..... Rolla

NEBRASKA

Alpha Theta - University of Omaha..... Omaha

Alpha Sigma - University of Nebraska..... Lincoln

NEW JERSEY

Nu - Upsala College..... East Orange

NEW YORK

Gamma - Cornell University..... Ithaca

Phi - Syracuse University..... Syracuse

Beta Iota - New York University..... New York

NORTH CAROLINA

Rho - University of North Carolina..... Chapel Hill

NORTH DAKOTA

Alpha Lambda - North Dakota Agricultural College..... Fargo

OHIO

Alpha Iota - Ohio State University..... Columbus

OKLAHOMA

Beta Nu - Northeastern State Teachers College..... Tahlequah

PENNSYLVANIA

Alpha - Lafayette College..... Easton

Beta - University of Pittsburgh (inactive)..... Pittsburgh

Kappa - Carnegie Tech..... Pittsburgh

Alpha Beta - Pennsylvania State College..... State College

Alpha Psi - Lehigh University..... Bethlehem

TEXAS

Alpha Omicron - Southern Methodist University..... Dallas

Alpha Rho - University of Texas..... Austin

Beta Delta - East Texas State Teachers College..... Commerce

VIRGINIA

Theta - University of Virginia..... Charlottesville

WASHINGTON

Alpha Xi - Washington State College..... Pullman

WISCONSIN

Upsilon - Milwaukee State Teachers College..... Milwaukee

Alpha Nu - St. Norbert College..... West DePere

Beta Theta - University of Wisconsin..... Madison

Stop! Look!! Listen!!!

Check this list of "Big Berthas"

THESE NATIONAL HEADLINERS WILL PLAY IMPORTANT ROLES AT THE ALPHA PHI OMEGA CONVENTION. THIS IS THE GREATEST GROUP OF NATIONAL LEADERS EVER PRESENTED AT ANY COLLEGE FRATERNITY CONCLAVE

HEAR 'EM-SEE 'EM IN ACTION

Hotel DeSoto, St. Louis, Mo.

December 28 and 29, 1938

WALTER W. HEAD, President of the National Council, B. S. A.

HON. CHARLES NAGEL, Former Secretary of Commerce and Labor, U. S. A.

ROBERT E. LEE HILL, Past President of the Rotary Clubs of the World.

HOMER L. CHAILLAUX, Director, National Americanism Commission, American Legion.

DR. GEORGE R. THROOP, President of Washington University.

DEAN ARNO NOWOTNY, University of Texas.

HAROLD F. POTE, National Director of Personnel, B. S. A.

DR. RAY O. WYLAND, National Director of Education, B. S. A.

FRANK W. BRADEN, Assistant Director of Senior Scouting, B. S. A.

★★★

AND THESE "OLD TIMERS" OF A. P. O. WILL ENJOY GOOD FELLOWSHIP WITH YOU:

"Doc" Hayes, "Judge" Charno, "C. M." Finnell, "Bill" Campbell, "Two-Gun Fred" Davie, "Chief" Bartle, "Parson" Johnson, "Sir Sid" North, "Jim" Fitch, "Bed" Furr, "Doc" Renfrow, "Ray" Davies, "Prof." Thomas, "Carl" Bauman, "Les" Tavel, "Bill" Lacy - Yes and more than 300 other brothers of A. P. O. from every nook and corner of the dear old U. S. A.

★★★

PLAN NOW TO GET THE GREATEST THRILL OF YOUR FRATERNITY LIFE BY ATTENDING THE NATIONAL CONVENTION

Washington University and the National Executive Board of Alpha Phi Omega Want You

See You at Hotel DeSoto, St. Louis, Mo., 9 a.m., Dec. 28, 1938

MONTANA
 NORTH DAKOTA
 SOUTH DAKOTA
 NEBRASKA
 KANSAS
 OKLAHOMA
 TEXAS
 ARIZONA
 NEVADA
 CALIFORNIA
 OREGON

YELLOWSTONE NATIONAL PARK

The
SEVENTH BIENNIAL
NATIONAL CONVENTION
 of Alpha Phi Omega

WILL BE HELD AT
 HOTEL DESOTO, ST. LOUIS, MO.
 DECEMBER 28th + 29th 1938.
SEE YOU THERE!

WILL BE HELD AT
HOTEL DESOTO, ST. LOUIS, MO.

SEE YOU THERE!