

TORCH AND TREFOIL

OF ALPHA PHI OMEGA



The Spirit of Giving

IN THE JOYOUS Christmas season, men in all walks of life, men of all religious faiths, abundantly share their worldly goods with the less fortunate and manifest a spirit of goodwill toward their fellowmen. Thousands of baskets of foodstuffs, thousands of tons of coal and thousands of garments of clothing are supplied to needy persons. Thousands of toys, books and sacks of candy are provided for anxious children. Yes, millions of kindly acts add to Yuletide joys and give evidence of the true spirit of giving.

Communities rise to the needs of their people, churches give special heed to the calls for assistance and organizations of all types catch the spirit of the season and turn their thoughts to the happiness of others.

Many Alpha Phi Omega Chapters conduct major service projects during the Christmas season, often sacrificing the vacations of their members, to bring satisfaction to needy families and enhance the Christmas spirit on college and university campuses throughout the nation. The students and faculties are given opportunities to lay gifts humbly and reverently under the campus Christmas trees erected and decorated by Alpha Phi Omega members. These gifts, varied in nature including money, are distributed as judiciously as possible by the chapters with the assistance of their community welfare agencies.

By unselfish activities, Alpha Phi Omega has helped make Christmas more than a vacation period in colleges and universities and has caused students and faculties to have a deeper appreciation of the needs of their fellow Americans.

But we have reason to be proud that Alpha Phi Omega does not confine its Good Turns to the Christmas season. This fraternity, truly a National Service Fraternity, gives continuous leadership to a nationwide program of service, conducting projects in the interest of campuses, communities, the Scout movement and the individual members of the organization. As one brother enthusiastically expressed it, "The Alpha Phi Omega spirit is the Christmas spirit of giving applied every day in the year."

As the years come and go, an ever-increasing number of campuses have the benefits of Alpha Phi Omega, an ever-increasing number of college officials and community leaders look to Alpha Phi Omega for services which affect the lives of thousands of persons. They have confidence in our ability to do well a big job and they have respect for our willingness to serve without seeking honor or recognition for ourselves. It is our responsibility to further justify that confidence and respect in the future.

In this season we glory in the anticipation of spreading joy and satisfaction. We thrill in the opportunities for service no matter how humble or poor our circumstances. We enter the New Year with hearts filled with thanksgiving and with eagerness to give our very best to those we are privileged to serve. May God's blessings shine upon our efforts to increase the service values of Alpha Phi Omega and thus increase the spirit of giving toward the happiness of our fellowmen.

TORCH and TREFOIL

The Magazine of
Alpha Phi Omega
National Service Fraternity

Issued regularly four times a year in
October, December, March and May.

Subscription price 50c a year

Entered as second class matter February 5,
1938 at the post office at Kansas City, Mo.,
under act of March 3, 1879.

Office of Publication
407 Land Bank Bldg.
Kansas City, Missouri

MAN-POWER AT WORK

The greatest display of man-power in the history of Alpha Phi Omega was at work in the student elections this fall at the University of Texas. Eighty members of Alpha Rho Chapter served an average of 4½ hours in conducting the elections under the leadership of Brother Livius Lankford. The chapter gave a total of 350 hours of work resulting in the most efficient election ever held on the Texas campus.

Several innovations were made in the process of voting, checking and counting, and the chapter now considers its system practically fool-proof. Soon a detailed report of the project and of the system used will be made available to all chapters in the fraternity.

Certainly, 350 hours of work in one project indicates the tremendous constructive power of a chapter of nearly a hundred members. Alpha Rho deserves congratulations on a big job well done.

The Editor Says . . .

Let's remember that INTENSIFICATION is the theme of 1939-40 in National Alpha Phi Omega. We are striving to increase our effectiveness in six major phases of fraternity achievement. Every chapter has been requested to strive for (1) Stronger Administration, (2) Increased Service, (3) More-interesting Meetings, (4) Greater Man-Power, (5) Organization of new chapters, and (6) Greater National Unity. Is your chapter giving its best effort in this growth program?

A Letter to You From the National President

Greetings, My Brothers:

This has been a thrilling day in my life. I am writing this communication to you from Berkeley, California, where I had the pleasure tonight of conducting the installation ceremony and presenting the Gamma Gamma chapter of our brotherhood with its charter to do business on the campus of the University of California. This afternoon I had the privilege of conducting the installation of the Gamma Beta chapter on the campus of San Jose State College. Imagine, if you will, two good thriving units being brought into our fraternity in a few short hours. Both of these new chapters are very enthusiastic about their affiliation with National Alpha Phi Omega and they have a keen vision of their potentialities for service on their campuses; they are composed of men of high caliber, with excellent student leadership, and the faculty and Scouting advisors are of the cooperative and helpful type. We may well expect excellent progress in the field of service from Gamma Gamma and Gamma Beta chapters.

There is another thrilling picture that I desire to present to you. The ritualistic ceremonies at the two installations were presented in a challenging manner by a group of alumni from Chi chapter. These brethren had been active in our chapter at U. C. L. A. and truly they have the spirit of Alpha Phi Omega in their hearts.

Last night on the campus of Stanford University, I met the men of Zeta chapter. Ten new brethren were initiated. The men of Zeta understand their responsibilities and I have every confidence that this chapter will make great strides during the year of 1940.

On Monday, I participated in the district conference of the four chapters in Southern California. Splendid delegations from Santa Barbara, San Diego, Southern California, and U. C. L. A. met on the U. S. C. campus. The brethren in attendance evidenced a vital interest in the four-fold program of our fraternity, and they eagerly made plans for the future of their chapters. Confident am I that this Southern California conference will prove exceedingly valuable to the future success of Alpha Phi Omega on the Pacific coast.

In less than three hours I will be enroute to Seattle where the installation of Gamma Alpha chapter is scheduled to take place on the campus of the University of Washington on Friday evening, December 8. I am eagerly looking forward to the establishment of this unit which will be our most northwestern chapter. The degree team of Alpha Xi chapter at Washington State will conduct the installation ceremony. The officers of this chapter will be accompanied by a group of men who in part make up the petitioning group at the University of Idaho, and I hope that I may have the privilege of conducting a school of instruction for the officers of these three chapters.

On this hurried trip through the west and northwest, I am realizing more than ever before the national aspects of Alpha Phi Omega and our opportunities for future growth in every section of the United States. Our fraternity has had a phenomenal growth during the fourteen years of its existence. We have built on what seems to be a firm and a lasting foundation. We know that our ideals are right. We believe that our program makes our college campuses and communities happier and finer places in which to live and work. From my observations I know that the men of Alpha Phi Omega are making the world better. Good wishes to each of you as you carry on for others.

Again I say - what a thrilling day!

Yours in the bonds of Leadership, Friendship and Service,

National President.

December 6, 1939.

A THRIVING YOUTH FOURTEEN YEARS OF AGE

This month marks the fourteenth birthday of Alpha Phi Omega. It was on December 16, 1925, that the first official meeting of Alpha Chapter was held at Lafayette College, Easton, Pennsylvania. Dr. Ray O. Wyland, National Director of Education and Relationships of the Boy Scouts of America, was the official representative of the Scout Movement at that first meeting of Alpha Phi Omega, and he has been an energetic leader in the organization throughout the history of the fraternity.

Fourteen years have brought great progress in Alpha Phi Omega. During this period a nation-wide service program has been established in colleges and universities—service which not only benefits students and faculty on the campuses, but also the communities, the local Scout councils, and the members themselves.

From Massachusetts Tech in the northeast to San Diego in the southwest, and from Washington in the northwest to Florida and Miami U. in the southeast, Alpha Phi Omega is functioning in every section of America. Chapters are carrying on the service program of this fraternity throughout the land. This is a phenomenal size for a college organization of only fourteen years' experience . . . and though mature in program, Alpha Phi Omega has much room for further growth in numbers of chapters and in manpower within the chapters to increase the service-power of every unit of the fraternity.

This fourteenth birthday offers a splendid opportunity to review the past achievements in every chapter and plan for the future. Let's continue our efforts to establish Alpha Phi Omega on the campus of every college and university in the nation and to build a service program of increasing value to our campuses, our college communities, and the great Scout Movement from which we have all received our heritage.

Let's look ahead to the fifteenth birthday of Alpha Phi Omega in 1940. Let's make Alpha Phi Omega's record of progress in 1940 surpass all previous records in the history of the fraternity.



NEW PLEDGE BUTTON NOW IN USE

Last month a new pledge insignia for Alpha Phi Omega was approved by the National Insignia Committee and was immediately put into production by our official jewelers, the L. G. Balfour Company. The new style button is of trefoil design in keeping with the style of pins and keys worn by active members; it bears the Greek symbols of Alpha Phi Omega and has a letter "P" in the center standing for Pledge. The new button is finished in Roman gold plate and blue enamel and is an attractive insignia which every pledge of our fraternity should be proud to wear on his coat lapel throughout his period of pledgship. (A replica of the new button appears at the head of this column).

This dignified pledge recognition is now within the means of all chapters. The new pledge button costs only 25c each and may be ordered singly or in quantities from our jewelers. A complimentary sample has been sent to the Vice-President (pledge master) of every chapter with the request that he display it at a chapter meeting and announce the change in pledge insignia.

In view of the low cost of the new button, all chapters are urged to make immediate use of the new official pledge insignia and discard all unofficial emblems which have been in use in the past. This is a means toward greater national unity in Alpha Phi Omega and is a real step forward in the development of the fraternity. It will undoubtedly be a boon to the effectiveness of pledging efforts throughout the fraternity and all chapters will want to use it to the best advantage in building their man-power to new heights during this school year.

Pledge Service

Alpha Phi Omega's period of pledgship, which averages two months in length throughout the fraternity, is designed to build within each neophyte the desire to render campus and community service. Chapter experience has proved that the most successful means of accomplishing this purpose is to require the pledges to carry out certain service projects which are specially assigned to them. Good pledge training carries over into effective leadership in chapter activities during the years of active membership.

The following are interesting examples of the service projects carried out by the pledges of some of the chapters as part of the preparation for active membership:

Alpha Rho's pledges (University of Texas) are required to participate in at least one campus project and three minor campus or community projects and keep office hours according to schedule at the chapter headquarters on the campus.

Pledges of Beta Gamma Chapter (Central Y. M. C. A. College) served in placing young refugee immigrants in Boy Scout Troops.

Pledges of Xi Chapter (Iowa State College) cleaned and painted the large stone sign which marks the campus entrance.

Delta Chapter (Alabama Tech) pledges care for the chapter room along with other special assignments.

Pledges of Beta Beta Chapter (Michigan State) conduct campus tours and help in sale of student directories.

Alpha Kappa Chapter (University of Southern California) gives its pledges special opportunities for leadership development by giving them regular committee assignments.

Pledges of Alpha Pi Chapter (University of Miami) are required to locate and submit an idea for a new service project which is acceptable and can be carried out by the chapter.

The projects mentioned above are typical special service assignments to pledges. Many other chapters require their pledges to participate in the regular service projects, working hand in hand with the active members in this capacity. This pledge service is of course in addition to the examination given in most chapters requiring pledges to know the his-

(Continued on Page 8)

BETA IOTA PLAYS SANTA CLAUS TO A LOST COMMUNITY

By Alfred Reichbach, Historian

The members of Alpha Phi Omega have just started a colorful project of playing Santa Claus to a lost community in the Blue Ridge Mountains of Kentucky. Turner's Creek, populated with about 600 people, is a lost horizon. They have no contact with the outside world, except for the postman's periodical visit. They live in peace and happiness, although very poor.

We are planning to present them with games and other entertaining items, as that is their expressed wish. These people have built a community house, each person donating time and goods, and this house is the center of their activities. The two checker boards they have are worn thin and their other equipment is in similar condition.

Brother Don Rosset is the instigator of the project. He contacted the woman in charge of the community house, who recently came to New York seeking aid, and after hearing her speak, he presented the idea to the chapter. A unanimous vote started our chapter to work, and Turner's Creek is to be thankful this Christmas.

We are securing the cooperation of the student body by several means. A free movie-revival show, a free dance and party will be given. The admission charge will be some toy, doll, book or game, all of which will be provided to a community of worthy and grateful citizens.

"SECRETARY OF MEMBER SERVICE"

Alpha Omega Chapter at K. C. O. S. has realized the need for a more accurate record of the services rendered by its members, a record that may be kept through the years as a part of the permanent history of the chapter. To accomplish this the chapter has plans for a new officer, a "Secretary of Member Service," to keep a personnel record of the offices held, the committee work done, the Scouting service, individual service and group service participated in by each active member. This new record plan deserves the consideration of all chapters.

PETITION FROM SPRINGFIELD COLLEGE

A group of twenty-six students and eight advisors at Springfield College, Springfield, Massachusetts, has made application for a charter in Alpha Phi Omega. This organization has been functioning about a year and has built an effective service program on the Springfield campus. Full information about the group is being sent to the chapters and executive board members of the fraternity for approval.

Many other new groups are organizing on campuses throughout the nation, indicating that other petitions will be presented for approval soon.

MISSOURI STATE CONFERENCE A GREAT SUCCESS

The leaders of all thirteen of the Alpha Phi Omega chapters in the state of Missouri assembled in Columbia, November 5, 1939, for an intense session of discussion about chapter program and administration. The conference numbered 103 delegates who applied themselves to plans for further development and expansion of the fraternity in their state. National President H. Roe Bartle presided throughout the meeting.

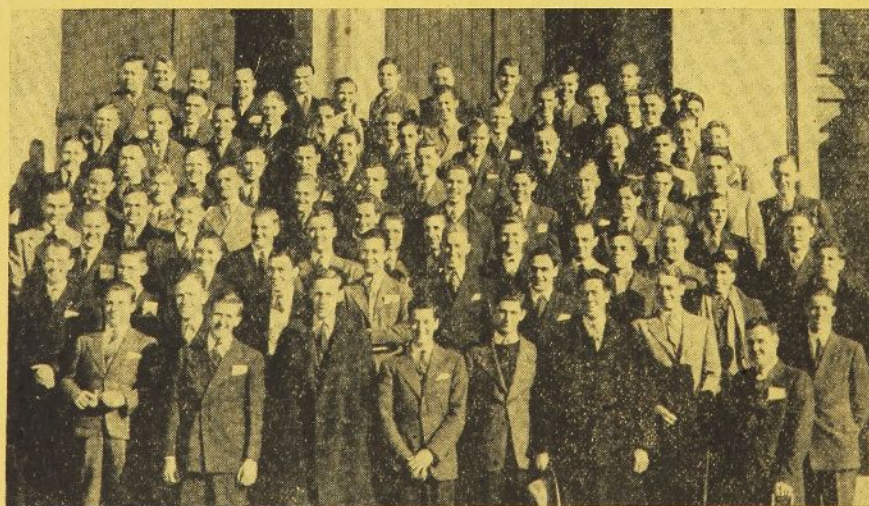
Beta Eta Chapter at the University of Missouri served excellently as hosts to the conference under the leadership of President Virgil Kruehl.

The conference opened with a presentation and discussion of INTENSIFICATION, the theme of the year. The six phases of the growth program were explained, and opportunity was given for general discussion of each.

The luncheon program presented a talk on "The Service Values of Alpha Phi Omega," by Dr. Lester I. Tavel, member of the National Executive Board; and a talk on "Needs in Leadership" by Brother Joseph Scanlon, Scouting Advisor of Alpha Eta Chapter.

The afternoon program included panel discussions by the Chapter Presidents, the Chapter Secretaries, the Campus Projects Chairmen and the Membership Chairmen. In these discussions, the officer representing each chapter was asked to explain his conception of the responsibility of his job. These served to stimulate the thinking of the entire group as to how the duties of these four key chapter leaders related to the duties of all other chapter officers.

Brother George H. Charno, member of the National Executive Board, presented the closing challenge to the conference. His keen analysis of the needs of the fraternity added the final touch to an enthusiastic and valuable meeting.



Representatives of the thirteen chapters in Missouri in attendance at the state conference in Columbia, November 5, 1939.

Material for the
March issue of
TORCH AND TREFOIL
will be gratefully received
at the National Office
The deadline is February 15

SOUTHERN CALIFORNIA CONFERENCE

The leaders of Chi, Psi, Alpha Delta and Alpha Kappa Chapters met in Los Angeles, December 4, with National President H. Roe Bartle presiding. A detailed account of the meeting will appear in the March issue of TORCH AND TREFOIL.

PLANS FOR STATE CONFERENCES

Arrangements are now being completed for state Alpha Phi Omega conferences in Texas, Oklahoma and Indiana. These will be leadership training meetings, giving opportunity for intimate discussion of chapter service projects and policies of chapter administration. The theme will be INTENSIFICATION, covering growth objectives in all phases of Alpha Phi Omega activity.

The Texas conference will be held in Austin, January 6 and 7 with Alpha Rho Chapter serving as host. Brother Bob Kniffin, past president, has been selected by his chapter as general chairman of the arrangements for the meeting, and every member of the chapter will serve on one of the committees preparing the details for the comfort and enjoyment of the visiting delegates.

The conference in Oklahoma, which will include the chapter at the University of Arkansas as well as the four chapters in Oklahoma, is being planned to convene in Tulsa, with Beta Pi Chapter as host. The exact date has not been announced.

The Indiana Conference has been announced to be held in Bloomington, February 9 and 10, with Mu Chapter as host. Brother William John Shaker has been appointed by Mu Chapter as chairman of the conference arrangements and has plans well underway for an enjoyable and profitable meeting.

At each of these conferences, especial invitations are being given to leaders of prospective new chapters to give them a first-hand knowledge of all phases of Alpha Phi Omega's program.

Plans for other conferences will be announced for other sections of the country in the near future.

Chapters Are Effective in Extension

One very impressive and significant note in the fall activity of Alpha Phi Omega is the cooperation given by the active chapters in forming petitioning groups on neighboring campuses. This is a distinct service, helping to extend the benefits of Alpha Phi Omega to other colleges and universities.

A new mimeographed bulletin titled "How to Organize a New Chapter of Alpha Phi Omega" has recently been published in the National Office and copies have been distributed to all chapters. This is designed to provide a specific plan of procedure in perfecting a petitioning group and should be valuable to the active chapters in transmitting full information about the fraternity to their friends on other campuses. How many copies of this extension bulletin can YOU put to effective use?

What a splendid expression of appreciation for the values of Alpha Phi Omega is shown by the following examples of chapters assisting in extension!

Beta Iota Chapter at N. Y. U., Gamma Delta Chapter at Downtown City College and Gamma Epsilon Chapter at Uptown City College, New York City, have combined their extension efforts for the purpose of forming petitioning groups in all eligible colleges and universities of the metropolitan area. At their first meeting, interested men were present from Columbia University, Cooper Union College, Queens College and Brooklyn College and it is expected that petitions will be received from all of these schools in the near future.

On October 21 and 22, 1939, Beta Beta Chapter at Michigan State sponsored its second Intercollegiate Alpha Phi Omega Conference to aid in spreading APO to other colleges in Michigan. At present there are two very active pledge groups which have been stimulated at these conferences. They are at the University of Michigan at Ann Arbor and the Western State Teachers College at Kalamazoo. In addition to these, chapter organization is definitely under way at Michigan State Teachers College at Ypsilanti, Northern State Teachers College at Marquette, and the Michigan College of Mines at Houghton. Beta Beta really believes in extension and is doing something about it.

Alpha Xi Chapter at Washington State is giving constant assistance to the new group at the University of Idaho.

Alpha Rho Chapter at the University of Texas is in contact with about a dozen schools in Texas, and through the leadership of Dean Arno Nowotny, member of the National Executive Board, and the energetic officers of Alpha Rho, several new chapters will soon be functioning in the Longhorn State.

At a recent meeting of Kappa Chapter at Carnegie Tech, representatives were present from Juniata College, Huntington, Pa., and California Teachers College, California, Pa. Kappa is also in contact with several other schools in the state.

A group at Marquette University at Milwaukee is under the efficient guidance of Upsilon Chapter, Milwaukee State Teachers College.

Eta Chapter at Northern Illinois State Teachers College and Dr. M. C. Hayes, National Vice-President, are in touch with several schools in Illinois and Wisconsin and are doing a consistent job of spreading the news of Alpha Phi Omega.

A new chapter at the University of Chicago is still a principal objective of Beta Gamma Chapter at Central Y.

Beta Theta Chapter at Wisconsin is in current contact with the group at Whitewater State Teachers College and expects a petition soon.

St. Louis University is the object of the extension efforts of Alpha Phi Chapter at Washington University and is expected to have a new charter granted before the close of this school year.

Alpha Upsilon Chapter at DePauw is continuing its efforts at Wabash College and has further extension under way at Rose Polytechnic Institute.

At the Missouri State Conference in Columbia, November 5, six schools were listed where chapters are needed to make complete coverage of Alpha Phi Omega in the state of Missouri. The officers of the present thirteen chapters in the state who were in attendance at the conference accepted the responsibility of giving personal assistance in organizing chapters on the six campuses.

At the Indiana State Conference, which is tentatively set to be held in Bloomington, February 9 and 10, extension will be a principal objective. Representatives will be invited to attend from every eligible school in the state and will be given guidance on how to complete the organization of chapters on their campuses.

And the prize bit of extension work has been done by the new petitioning group at Springfield College, Springfield, Massachusetts. Even before being installed as a chapter, this group has assisted toward forming a new group at Northeastern University, also in Springfield.

And so, the chapters of Alpha Phi Omega continue to extend the fraternity to neighboring campuses. Is your chapter mentioned above? If not, have you made contact recently toward forming chapters at other schools, and have you reported those contacts to the National Office? Your National Executive Board is anxious to cooperate with you to the fullest in your extension work and will be glad to have your suggestions concerning extension in your vicinity.

ALL-UNIVERSITY CHRISTMAS SING AT IOWA

The Memorial Union at the University of Iowa will be the scene of an all-university Christmas Sing, December 14, under the sponsorship of Omicron Chapter of Alpha Phi Omega. All students and faculty members of the university have been invited to join in carol singing. Brother Lewis Lapham is chairman of the project for the chapter and has carried out the arrangements for the sing in an excellent manner.

This project is one which deserves the consideration of all chapters in the fraternity. There is opportunity on virtually every college and university campus to sponsor an all-campus sing to help enhance the Christmas spirit.

ETA'S LOAN FUND GROWS

The Coca-Cola and candy concession operated by Eta Chapter on the Northern Illinois S. T. C. campus has already netted nearly \$400 profit since the opening of school in September. This money has been added to the Chapter's scholarship and loan fund from which assistance is given to needy students.

The second annual Musicale was recently sponsored by Eta Chapter. This year's play was entitled, "Deal Me Out." A photograph and full report of this project will appear in a later issue of TORCH AND TREFOIL.

FOUR NEW CHAPTERS

As the final editing of this issue is being completed, the installation plans are ready for four new chapters. Under the direction of President Bartle, Gamma Beta Chapter at San Jose State College, San Jose, California, and Gamma Gamma Chapter at the University of California, Berkeley, are to be installed December 6. Gamma Alpha Chapter at the University of Washington, Seattle, is to be installed December 8. With Dr. Ray O. Wyland officiating, Gamma Zeta Chapter will be installed at Georgia Tech, Atlanta, December 16.

The stories of these installations and the photographs of the charter memberships will be published in the March issue of TORCH AND TREFOIL.

AID IN BOY FACT SURVEY

The results of a Boy Fact Survey in Omaha were tabulated by members of Alpha Theta Chapter in the interest of the local Scout Council. The survey was taken in all seventh and eighth grade school-rooms in the city. The questions asked were: Are you a Boy Scout now? Do you want to become a Boy Scout? Who would make a good Scoutmaster and why? What books, magazines, and newspapers do you read? What do you do with your spare time?

CHRISTMAS DELIVERY SERVICE BY BETA MU

Alpha Phi Omega at Springfield (Missouri) Teachers has offered to aid in distributing baskets to the needy families on Christmas eve or thereabouts. Any other fraternity, club or society on the campus may, by contacting Beta Mu Chapter, secure prompt delivery of any basket, bundle or other object of Christmas cheer to the needy.

NEW SAN DIEGO DIRECTORY BY ALPHA DELTA CHAPTER

For the second year, Alpha Delta Chapter has edited and published the Director of San Diego State College. The 1939-40 edition is a 112-page book listing the names, addresses and telephone numbers of all faculty members and students, and the officers of all campus organizations. In February a supplement will be published for the directory to include students entering the college in the mid-year.



Date

Time

Place

Blueprinted sheets bearing the above inscription are used on the bulletin boards at Carnegie Tech to announce the meetings of Kappa Chapter.

ALPHA OMEGA SPONSORS BOY SCOUT CLINIC

A clinic emphasizing postural studies was recently sponsored by Alpha Omega Chapter for the Boy Scouts of Kirksville, Missouri. The Scouts were examined by staff physicians of the public clinic of the Kirksville College of Osteopathy and Surgery.

From the group of boys who took advantage of this clinic, a number of cases were selected for special attention and will be treated and examined at regular intervals.

This is a service project of great value to the future health of the Scouts of Kirksville and is one which may well be repeated annually.

Although the clinic is an activity especially suitable to a school where all the students are studying to become physicians, it is a project which may easily be adapted to use in other chapters. Through the assistance of public health officials and benevolent physicians there is a possibility for every chapter in the fraternity to aid in the health problems of the Scouts in its community. It is suggested that every chapter consult the local Scout Executive and the Health and Safety Committee of its local council to determine the need for Alpha Phi Omega's cooperation toward a Boy Scout Clinic similar to the one sponsored at K. C. O. S.

HONOR TO BROTHER BOB KNIFFIN

A life membership was presented to Brother Bob Kniffin by Alpha Rho Chapter at the Chapter's fall banquet, November 24. This was an expression of appreciation to a dynamic leader in the success of the chapter, to a brother who served excellently as chapter president last year and is continuing his good work this year.

BUILDING MEN

We are blind unless we see
That in this human plan
Nothing is worth the making
Unless it makes the man.

Why build our cities glorious
If man unbuilt grows?
In vain we build the world unless
The builder also grows.

-Edwin Markham

"QUARTERBACK HOUR" POPULAR AT INDIANA

Mu Chapter Sponsors New Program of Football Appreciation

More than 800 spirited students, faculty members and townspeople jammed Chemistry auditorium at Indiana University, October 25, for the first session of the "Campus Quarterback Hour" sponsored by Mu Chapter of Alpha Phi Omega. Moving pictures were shown of the Indiana-Illinois football game as a means of increasing the general knowledge of the technicalities of the game and enlivening the spirit of Hoosier fans.

Within three minutes after the doors of the hall were opened the enthusiastic crowd filled every available seat and all standing space. Many spectators preferred to sit on the floor in the aisles rather than miss the program. Approximately 250 persons were turned away.

Dr. Herman B. Wells, president of the university, opened the meeting after three cheer leaders had led the responsive gathering through cheers that rang to the rafters and reverberated through the halls of the Chemistry building. The director of athletics, Zora G. Clevenger, spoke briefly, and then Coach A. N. (Bo) McMillin flashed the film on the screen.

Brother McMillin, who is an honorary member of Alpha Phi Omega, mixed humorous observations as he explained both Indiana and Illinois plays and formations during the showing of the picture. After the movies, Bo answered questions from the floor.

This "football clinic" was instigated by Brother Dick Herd, president of Mu Chapter, and quickly received the support of the chapter members, student council and administration officials of the university. The program was repeated following each out of town game of the Indiana team and a hall of greater capacity was utilized to accommodate larger crowds.

Congratulations Mu on this interesting and valuable campus project!

Look again at page three of your October issue of Torch and Trefoil! INTENSIFICATION is the theme throughout 1939-40.

We Point With Pride



Joseph A. Beck

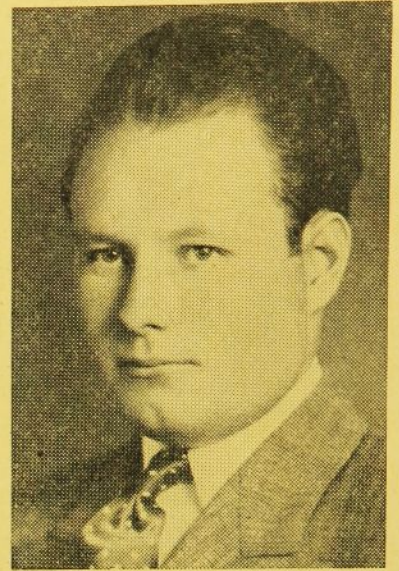
... This brother of Kappa Chapter has been appointed cadet colonel of the Carnegie Tech R. O. T. C. for 1939-40.

(Cut used through courtesy of "The Carnegie Tartan")

Brother **Roland E. Weatherhead**, president of Psi Chapter, has been chosen for "Who's Who Among Students in American Universities and Colleges," is a member of the student council of Santa Barbara State, editor of the college year-book, editor of the student handbook, member of the college press board, secretary of Blue Key, member of Pi Kappa Alpha, and member of Alpha Phi Gamma (journalism).

Brother **Herman N. Harms**, alumnus of Alpha Chapter, is the recipient of a law school scholarship at Western Reserve University. He is now taking preliminary steps to form an Alpha Phi Omega Chapter at Western Reserve.

Brother **Robert Hammersmith** of Upsilon Chapter is managing editor of the "Echo Weekly," campus newspaper at Milwaukee S. T. C. Brother **Leonard Babrove** is business manager of the paper, and the following other brothers are members of the publication staff: **George Schraut, Roland Fischer, Don Kuehl, Robert Munger, Fred Schultz, Robert Smith, Jim Lawrie and Byron Helfert.**



Charles Churchill

... He is past president of Beta Upsilon Chapter at the Northeast Missouri State Teachers College and has been selected for the 1939-40 edition of "Who's Who Among Students in American Universities and Colleges." The selection was made by a faculty committee on the basis of outstanding qualities in character, leadership, scholarship and potentialities.

Brother **Keith Green**, first president of Beta Pi Chapter, is now president of the student council at the University of Tulsa.

In Kappa Chapter of Carnegie Tech, Brother **Bill Williams** is editor-in-chief of the college annual, Brother **Thomas Pratt** is editor-in-chief of the Plebe Bible, Brother **Harold Quell** is managing editor of the campus newspaper, Brother **Arthur Hirsch** is vice-president of the sophomore class in the College of Fine Arts, Brother **Arthur Burleigh** is captain of the ice hockey team.

Prof. **Kent D. Shaffer**, faculty advisor of Kappa Chapter and member of the National Executive Board of the fraternity, has again this fall served as a director of the community fund drive on the campus.

In Beta Iota Chapter, Brother **Alfred Reichbach** is president of the N. Y. U. Outdoor Club, Brother **Robert Gordon** is Secretary of the Interfraternity Council, Brother **Ed Kempler** is Treasurer of the Intrafraternity Council.

Gleanings from Chapter Correspondence

MILWAUKEE S. T. C.

Because of the work of Upsilon Chapter, the other organizations on this campus, women's service organization, social fraternities and sororities are becoming **service conscious**. There is almost competition for service projects. However, instead of competition there is cooperation."

—Stanley Lontkowski, *Historian*

LEHIGH

"Our immediate program in Alpha Psi Chapter includes the improvement of our campus fireplace, cooperation with the athletic department in planning a hiking program, supervision of swimming for the local Scouts at the Community Center and assisting in a camp-o-ral for the local council."

—Richard A. Ware, *Secretary*

WISCONSIN

"A new idea being investigated in Beta Theta Chapter is for a service library for aiding needy students in securing decent text books at a minimum expense. Indications are good for this being worked out on a permanent basis."

—Robert D. Goff, *President*

MICHIGAN STATE

"The homecoming party of 1939 on this campus was sponsored by Beta Beta Chapter."

—Eugene W. Kelley, *Historian*

TULSA

"The formation of a fencing club is under way at the University of Tulsa under the sponsorship of Beta Pi Chapter."

—Robert B. Price, *Secretary*

KANSAS CITY U.

"Alpha Eta Chapter is aiding a crippled girl to get around the buildings by carrying her in her wheel-chair up and down the stairs between classes."

—George Converse, Jr., *President*

ARKANSAS

"In this period of world history, selfishness between nations as well as individuals is much too predominate. I recognize the need for a greater application of the principles of Alpha Phi Omega. May we advance to a higher point of efficiency in the work we are doing."

—Robert F. Perkins, *President*

CARNEGIE TECH

"Members of Kappa Chapter are found in almost every activity on the campus including publications, athletic teams, honorary societies and fraternities, clubs, musical organizations, student government, and several have been placed on the dean's list for high scholastic standing."

—Harold Quell, *Historian*

NEW YORK UNIVERSITY

"We are assisting in rebuilding the New York University Outing Club. Members of Beta Iota Chapter have assumed positions of leadership in the club and several interesting trips have been taken. The organization's membership is now more than a hundred."

—Alfred Reichbach, *Historian*

SYRACUSE

"Our program in Phi started with a bang in the fall with the fingerprinting of most of the students in the university. We printed about four thousand."

—Charles Pound, *Vice-President*

PURDUE

"Alpha Gamma Chapter has been enjoying one of its best years. Our meetings have been well attended by active members and faculty members, and there has been much interest shown by non-members."

—R. E. Potts, *Secretary*

OKLAHOMA CITY U.

"Before last year there was no American Flag on our campus flagpole. Last fall after the usual fraternity mix-up, a group of Beta Chi members cleaned the pole and managed for a flag. This year, to supplant the old unorganized custom, we opened the pole for one week and sponsored a fifty-hour contest offering a cup to the fraternity keeping its flag on the pole the greatest number of hours. The losing fraternities were required to clean the pole. The whole affair was a real success."

—Ethan Walker, *President*

SANTA BARBARA

"This Christmas we will furnish a tree to decorate the library of our college and provide a box underneath in which we request gifts be placed for distribution to the needy. We will also ask other fraternities to stage a party, with a toy as the price of admission. With the toys collected at our own chapter party and from the other fraternities we should have a large number for distribution."

—Roland E. Weatherhead, *President*

U. C. L. A.

"Chi Chapter has certainly been running on all cylinders this semester. The chapter now has a 100% **active** membership and that is just what is needed to make progress in the four fields of service in Alpha Phi Omega."

—Paul E. Pearson, *Past President*

NORTHWESTERN

"We have been asked by the Senior Commission to handle an information booth to act as host to fifty lecturers coming to N. U. next week. This is in connection with the Vocational Guidance Conference, and our job will be to make appointments for student

discussions with the lecturers, see that the lecturers know the "what, where and why" of their jobs and secure transportation for them between meetings."

—Edgar Van Allsburg, *President*

SPRINGFIELD S. T. C.

"The first anniversary of Beta Mu Chapter will be celebrated with a banquet and initiation ceremony, January 19."

—Hugh Wise, *President*

WICHITA

"Our members in Beta Alpha did a splendid piece of work in bringing to the campus for a conducted tour and free football game approximately two thousand Scouts and Scouters of the Wichita area."

—Prof. Cecil B. Read, *Senior Faculty Advisor*

MIAMI U.

"Alpha Pi's latest project was an unusual contest which enabled us to raise funds to purchase a new banner for the university. More news about this will be furnished later."

—John L. Quimby, *President*

ALABAMA TECH

"Delta Chapter recently sponsored a drive for thirty new tennis courts on the campus. We hope to get the courts by spring as the money has been raised to build them. We are now helping sponsor Citizenship Day which is December 14. The object of this program is to emphasize the responsibilities of citizenship and get all students who are 21 or over to register and vote in the next election."

—Arthur E. Harvey, *President*

MILWAUKEE S. T. C.

"Upsilon has recently cooperated with a Scout Troop in constructing a conservation booth at the Wisconsin Hobby Exposition."

—George E. Schraut, *Past President*

MICHIGAN STATE

"Beta Beta now has twenty pledges. This is a partial step toward our goal of a hundred active members before the year is out."

—Dick Bates, *Membership Chairman*

TEXAS

"Brother Buck Durham, president of Alpha Rho Chapter, was seriously injured in an automobile accident on November 11. We are glad to report he is now making satisfactory recovery."

—Bob Mathis, *Historian*

PLEDGE SERVICE

(Continued from Page Three)

tory of the National Fraternity and of the chapter as well as other facts about the program and administration of the organization.

An almost universal requirement is that pledges attend all chapter meetings except times when the ritual is in use at initiations and closing ceremonies.

This is necessary to build the proper interest among the pledges.

Hazing has no place in Alpha Phi Omega. This fraternity is a brotherhood devoted to friendship, and therefore, any form of informal initiation of pledges is not in keeping with the spirit and program of the fraternity.

Effective pledge training is absolutely essential to the success of every chapter of Alpha Phi Omega and it deserves the careful attention of all chapter leaders.