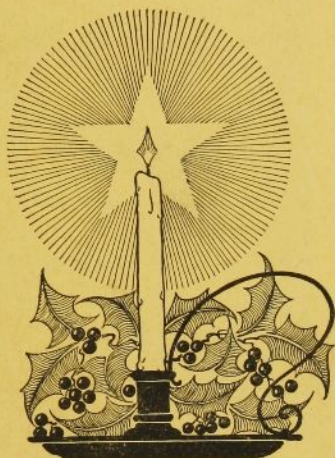


TORCH AND TREFOIL

OF ALPHA PHI OMEGA



Goodwill Toward Men

Christmas gives evidence of a living faith in God. It gives assurance that democracy and human kindness warm the hearts of men. It overshadows greed and false pride. It brings out the best in human souls. It crosses all lines of human endeavor. It joins men in a common purpose.

The year 'round Alpha Phi Omega exemplifies the spirit of giving and makes "Goodwill Toward Men" a reality on college and university campuses the country over. In the joyous Christmas season, many chapters are conducting major service projects, often sacrificing the vacations of their members, to bring satisfaction, comfort and happiness to needy families. Students and faculties reverently lay gifts under campus Christmas trees, gifts of useful nature to be distributed to the less fortunate people of their communities.

Especially at this time of year, men of all religious faiths, men in all walks of life, men of great means and small, abundantly share their worldly goods with their fellowmen. Without thought of return, thousands of garments of clothing and thousands of baskets of food are supplied to worthy persons. Children's hearts are made happy by thousands of toys, books and sacks of candy. Millions of kindly acts add to Yuletide joys.

Organizations of all types catch the spirit of the season. Communities rise to the needs of their peoples. Churches give special heed to calls for assistance. Everyone turns his thoughts to the happiness of others. Unselfishness reigns. Children and grown-ups alike learn that it is more blessed to give than to receive.

In this season, we glory in the anticipation of spreading joy and satisfaction. However humble or poor our circumstances, we appreciate our opportunities for service. As the New Year approaches, our hearts are filled with thanksgiving and with eagerness to give our very best to those we are privileged to serve. We pray God's blessings upon our efforts to increase the service values of Alpha Phi Omega and thus increase the spirit of giving toward the health and happiness of our fellowmen.

VOLUME 16 - NUMBER 1
DECEMBER 1940

TORCH and TREFOIL

The Magazine of
Alpha Phi Omega
National Service Fraternity

Issued regularly eight times a year in
September, October, November, December,
February, March, April and May.
Subscription price \$1.00 a year.

Entered as second class matter February 5,
1938 at the post office at Kansas City, Mo.,
under act of March 3, 1879.

Office of Publication
407 Land Bank Bldg.
Kansas City, Missouri

OFFENSIVE ACTION NEEDED

Alpha Phi Omega was ably and enthusiastically represented at the National Interfraternity Conference banquet in New York City, November 29, by two past chapter presidents and two members of the National Executive Board. They were Brother Joe Green of Beta Iota Chapter, Brother Bob Shaffer of Alpha Upsilon Chapter, and Brother Ray O. Wyland and Brother Harold F. Pote of the National Executive Board.

We quote a portion of the report of one of the addresses which relates to the principles of Alpha Phi Omega, as written by Brother Shaffer:

"President Wriston of Brown University made an exceptionally fine address at the National Interfraternity Conference banquet, November 29, in New York. He drew a parallel between the negative, defensive position taken during the past few years by democracies as opposed to the positive, offensive action taken by its enemies. As a basis for his parallel he pointed out the experience of the Maginot Line in France as opposed to the lightning-like offensive action of other countries.

"He pointed out that if fraternities are to keep alive the spirit which has made them great in the past they must not be satisfied with defending themselves but must take the initiative in showing how they can be of service to their members and to society as a whole. This, of course, is directly in line with the philosophy of Alpha Phi Omega which is based entirely upon seeking out opportunities for service."

GAMMA SIGMA CHAPTER INSTALLED AT THE UNIVERSITY OF CHICAGO

By George Crapple, Historian

The installation of Gamma Sigma Chapter at the University of Chicago was conducted November 16, 1940, under the direction of Brother H. Roe Bartle, National President, Dr. M. C. Hayes, National Vice-President, and Brother C. M. Finnell, member of the National Executive Board. The twenty-eight undergraduate members and seven advisors were inducted by the degree team of Beta Gamma Chapter.

A conference of neighboring chapters, including Beta Gamma at Central Y. M. C. A. College, Sigma at Northwestern University, and Eta at Northern Illinois State Teachers College preceded the installation.

(Continued on Page 8)

GAMMA PI CHAPTER INSTALLED AT UNIVERSITY OF MICHIGAN

By Irving C. Koval, Historian

In the fall of 1938, a local organization was established of former Scouts enrolled at the University of Michigan, Ann Arbor. The group prospered from the beginning, and soon began looking toward Alpha Phi Omega.

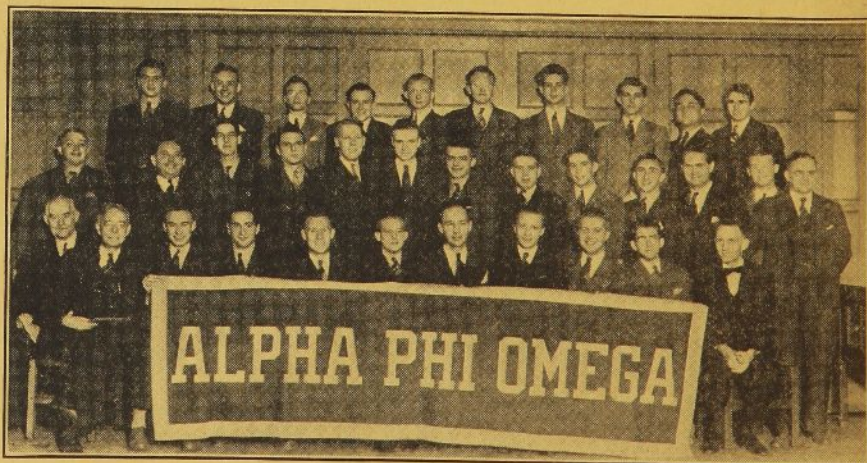
In the spring of 1939, Beta Beta Chapter of Alpha Phi Omega at Michigan State sponsored a state conference for the special benefit of interested men on other campuses. Several members of our Michigan group participated in that conference, and since that time the forming of a chapter at the University of Michigan has become a reality.

On November 17, 1940, Gamma Pi

(Continued on Page 8)



The charter members of Gamma Sigma Chapter at the University of Chicago, installed, November 16, 1940.



The charter members of Gamma Pi Chapter at the University of Michigan installed, November 17, 1940.

Three Leaders of Eighth Biennial National Convention

PRESIDING OFFICER



H. Roe Bartle

In his inimitable way, he will officiate at the eighth biennial National Convention of Alpha Phi Omega in Indianapolis, December 28 and 29. He has had a major role in every National Convention in the history of Alpha Phi Omega, and has served effectively as National President of the fraternity for the past ten years.

Under his energetic guidance, 78 new chapters have been established in Alpha Phi Omega since his inauguration as president in the early spring of 1931, and Alpha Phi Omega has become a strong constructive force on the college and university campuses of the nation. His keen vision has been a strong factor in building the service program and the administrative structure under which Alpha Phi Omega is now progressing.

His participation in many district conferences and national conventions has been truly inspirational to the chapter delegates and has resulted in splendid growth in chapters in all sections of the United States. You will want to see him in action at the Indianapolis convention and catch his spirit and enthusiasm for the principles of Leadership, Friendship and Service.

KEYNOTE SPEAKER



Dean Arno Nowotny

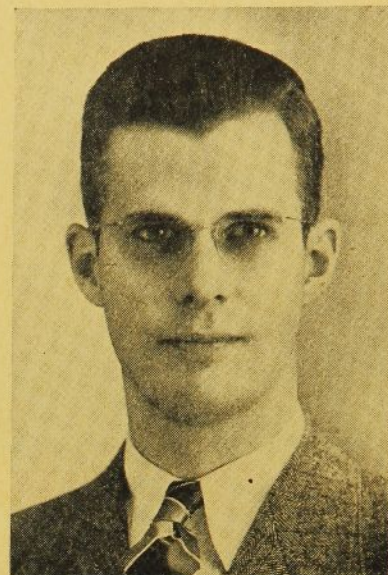
He will sound the keynote at the Indianapolis convention. Since his election as a member of the National Executive Board at the seventh biennial convention two years ago, he has been one of the most active members of our governing body. All through the southland he has spread the news of Alpha Phi Omega, to students, faculty members and college officials.

With his guidance, Alpha Rho Chapter at the University of Texas, has continued to march forward. He is more than a faculty advisor. He is a counselor and friend of every officer, member and pledge of his chapter and he is active in the many projects and activities of APO on his campus.

As assistant dean of men and director of student employment, he is highly respected by deans throughout the nation. He is a member of the National Association of Deans and Advisors of Men and he presented our National President as the key speaker at the deans' convention last summer.

He is active in Scouting circles in Austin, Texas, and always gives his untiring support to enterprises which benefit the youth of his community.

PROGRAM CHAIRMAN



Kenneth Cedarland

He has been appointed by the National President to serve as Program Chairman for the coming National Convention in Indianapolis. As a 1940 graduate of the University of Kansas and past president and secretary of Lambda Chapter he has a thorough knowledge of what the convention program must include to be of the greatest value to each chapter delegate and to the fraternity at large.

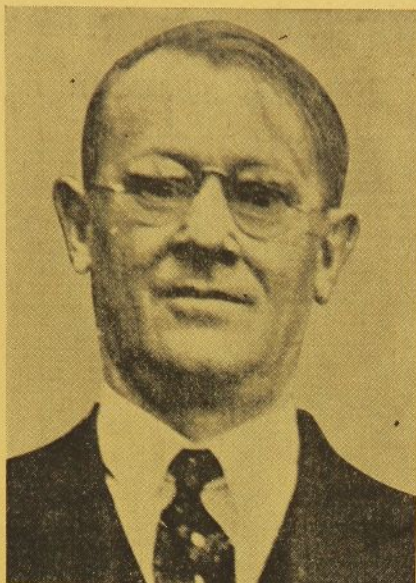
This good brother is passenger agent for Transcontinental and Western Air, Inc., at Dayton, Ohio, and is giving liberally of his time in the interest of Alpha Phi Omega. He is the newest member of our National Executive Board and is determined to extend Alpha Phi Omega to many schools in Ohio. He has long had a keen interest in the advancement of the national fraternity.

Under his guidance we are assured of a convention program of interest and value which will top our most successful conventions of the past. Make sure every possible delegate attends the convention as a representative of your chapter, so APO on your campus will reap the greatest possible benefit from this program.

Program of Far Reaching Value Will be Presented at Indianapolis

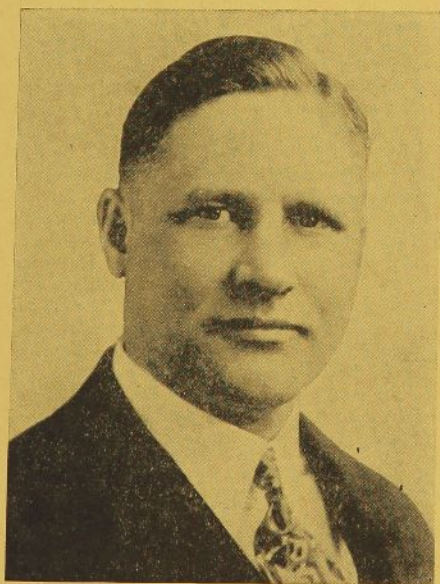
Ever-mounting enthusiasm marks the final preparations for Alpha Phi Omega's 1940 National Convention, to be held in Indianapolis, Indiana, December 28 and 29. A great mass of delegates, some having traveled as far as 2,200 miles, will assemble at the Antlers Hotel to participate in a "working" convention . . . a meeting which promises to be an important milestone in the history of Alpha Phi Omega.

The present conservative estimate is that 400 delegates will attend the convention. National policies will be discussed and proposals will be acted upon for the future growth of our fraternity. Chapter reports on service projects and administrative policies will bring forth ideas for smoother operation in all units of our fraternity. All in all, this convention will be a beneficial conclave for all who attend and it will serve to



Dr. M. C. Hayes

... National Vice-President of Alpha Phi Omega. Professor of education at Northern Illinois State Teachers College. An enthusiastic leader in four biennial conventions, "Father" and Senior Faculty Advisor of Eta Chapter. At Indianapolis he will aid with the faculty advisors discussion group. He reports Eta will be at the 1940 convention, as usual, with the largest of all chapter delegations.



Dr. Ray O. Wyland

... Charter member of Alpha Chapter at Lafayette College. National Director of Education and Relationships, Boy Scouts of America. Veteran chairman of Alpha Phi Omega's aims and objectives committee. Loved and respected as a guiding spirit in our fraternity. He will play a prominent part in our Indianapolis convention, and will bring a timely message to the delegates at the fellowship luncheon, December 28.

accelerate the growth of Alpha Phi Omega in the years ahead.

Every Delegate Will Have Definite Responsibility

Seventy-one delegates have accepted the program committee's invitation to take special parts in the convention activities. Twenty-seven other delegates have accepted responsibilities as discussion chairmen. Many more have already been assigned to legislative committees which will be announced at the opening session. At least ninety members from the six Indiana chapters will be on hand as hosts. And every other delegate who attends will be given a real responsibility in planning the future development of Alpha Phi Omega.

There will be five legislative committees and fourteen discussion groups in which every phase of Alpha Phi Omega's service program and administrative policies will be studied and discussed. Each committee and each group will make a formal report to the entire assembly for further discussion and ratification.

Brother Kenneth Cedarland, our program chairman, is pleased to announce the following program for the convention. Read it! Analyze it! Determine to be there to take part in it!

Tentative Program

FOR THE

EIGHTH BIENNIAL CONVENTION

OF

Alpha Phi Omega

SATURDAY

DECEMBER 28

8:00 to 9:00 A. M. Registration and Orientation.

9:00 OPENING SESSION OF CONVENTION..... H. ROE BARTLE (IOTA, PARK COLLEGE)
National President, presiding

Call to Convention.

Invocation..... REV. L. A. V. DECLEENE (ALPHA NU, ST. NORBERT)
Senior Faculty Advisor

Roll Call and Communications..... SIDNEY B. NORTH (PI, KANSAS STATE)
Scouting Secretary

Presentation of Convention Program..... KENNETH CEDARLAND (LAMBDA, KANSAS)
Chairman, Program Committee

Welcome by Host Chapters..... MARION R. DISBOROUGH (GAMMA MU, EVANSVILLE)
Chairman, General Convention Committee

Welcome by City of Indianapolis..... WALLACE O. LEE (ALPHA TAU, BUTLER)
Scouting Advisor

Response for the Fraternity..... JOE GREEN (BETA IOTA, N. Y. U.)
HUGH BOURQUE (BETA PHI, S. L. I.)
GERALD W. O'CONNOR (GAMMA NU, IDAHO)
JOHN L. QUIMBY (ALPHA PI, MIAMI)
TED HOLLANDER (GAMMA SIGMA, CHICAGO U.)

Outline of Convention Objectives and Appointment of Committees..... H. ROE BARTLE

Keynote Address..... DEAN ARNO NOWOTNY (ALPHA RHO, TEXAS)
Member of National Executive Board

Discussion Group Meetings of Chapter Leaders.

12:15 FELLOWSHIP LUNCHEON..... DR. LESTER I. TAVEL (ALPHA OMEGA, K. C. O. S.)
Member of National Executive Board presiding

Invocation..... DEAN A. C. ZUMBRUNNEN (ALPHA OMICRON, S. M. U.)
Faculty Advisor

Singing.

General Introductions.

Address..... DR. RAY O. WYLAND (ALPHA, LAFAYETTE)
*National Director of Education
Boy Scouts of America*

1:45 AFTERNOON SESSION..... H. ROE BARTLE, presiding

Series of Five-Minute Talks

"From Nothing to Something on My Campus"

JOHN DIEMER, Beta Kappa, Central Missouri Teachers

"The Executive Committee and Its Value in My Chapter"

DICK ALMAN, *Beta Beta, Michigan State*

BILL BARTON, *Alpha Rho, Texas*

"Why the Badge of APO is a Distinction on My Campus"

EMIL ZIBUNG, *Upsilon, Milwaukee*

"The Value of Faculty Advisors to My Chapter"

ARGO PEEK, *Beta Sigma, Texas Tech*

"Fellowship and Fraternalism in My Chapter"

LEWIS STERN, *Gamma Zeta, Georgia Tech*

CLARENCE ROTHE, *Alpha Nu, St. Norbert*

"Men of Alpha Phi Omega Means Men of Leadership on My Campus"

RICHARD SHEPHERD, *Alpha Psi, Lehigh*

Address—"How to Stabilize the Program of APO"

DR. M. C. HAYES (ETA, NORTHERN ILLINOIS)
National Vice-President

Address—"Service to Less-Chance Boys"

STANLEY A. HARRIS (RHO, N. CAROLINA)
*National Director of Inter-Racial Scouting,
Boy Scouts of America*

Legislative Session.

Memorial Services To Our Departed Brothers

DR. EDWIN C. JOHNSON (OMICRON, IOWA)
National Treasurer

Convention Photograph.

Discussion Group Meetings.

6:15 NATIONAL BANQUET OF ALPHA PHI OMEGA

GEORGE H. CHARNO (ALPHA ETA, K. C. U.)
Member of National Executive Board, presiding

Invocation.

Dinner Music.

Singing.

Special Numbers.

Addresses:

HON. M. CLIFFORD TOWNSEND, *Governor of Indiana*

HON. HENRY F. SCHRICKER, *Governor-Elect of Indiana*

DR. HERMAN B WELLS, *President of Indiana University*

9:00 Meetings of Legislative Committees.

Constitution and By-Laws Committee.

Alumni Organization Committee.

Extension Committee.

Songs Committee.

Resolutions Committee.

Nominations Committee.

New Ritual Presentation.....By Degree Team of Beta Beta Chapter, Michigan State

SUNDAY DECEMBER 29

7:30 A. M. Worship Services.

8:30 Breakfast.

Invocation.

Songs

Roll Call and Communications.

9:15 MORNING SESSION

H. ROE BARTLE, presiding

Report of the National Secretary.....SIDNEY B. NORTH

Report of the National Treasurer.....DR. EDWIN C. JOHNSON

Report of the National Field Representative.....T. W. "BILL" LACY

Report of the Extension Chairman.....C. M. FINNELL

"Financing the Chapter Program"

A Series of Five-Minute Talks by

WARREN BAIE, *Eta, Northern Illinois*

RICHARD BATES, *Beta Beta, Michigan State*

JACK KIMBALL, *Alpha Eta, K. C. U.*

PAUL KRIEDEMANN, *Alpha Nu, St. Norbert*

ROYAL RADIN, *Beta Iota, N. Y. U.*



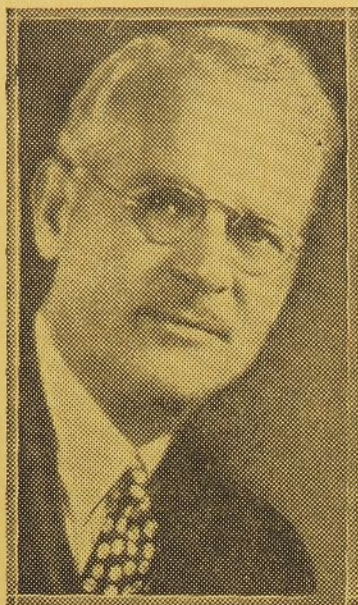
Harold F. Pote

... National Director of Personnel, Boy Scouts of America. Active leader on the National Executive Board of Alpha Phi Omega. Through his keen analysis of leadership needs and opportunities, he will bring an important message to the Indianapolis convention at the luncheon session, December 29. He will be available for personal interviews with delegates about professional service in Scouting.



George H. Charno

... Outstanding leader in four biennial conventions of Alpha Phi Omega and in many conferences and installations. Advisor of Alpha Eta Chapter at the University of Kansas City. Corporation attorney. Past president of the Kansas City Boy Scout Council. Known throughout the middle-west as a friend and leader of youth. He will preside at the national banquet at the Indianapolis convention and will have other prominent roles in the convention proceedings.



C. J. Carlson

... For many years the spark-plug of Alpha Phi Omega on the Pacific Coast. Member of Chi and Alpha Kappa Chapters. Now Regional Scout Executive, Region VII, giving consistent aid to the growth and development of APO in the north central states. He will address the Indianapolis convention on "The Responsibility of Scouting Advisors."



Prof. A. L. Thomas

... Eleven years active as Senior Faculty Advisor of Delta Chapter. Professor at Alabama Polytechnic Institute. Prominent leader in the Scout Movement in Alabama and in all worthwhile civic enterprises of his community. Energetic member of Alpha Phi Omega's National Executive Board. He will speak on "The Place of APO on the College Campus" at the Indianapolis convention.

"The Outstanding Project of APO on My Campus"

A Series of Five-Minute Talks by

ED WILLSON, *Alpha Delta, San Diego State*

FRED HAYNES, *Alpha Omicron, S. M. U.*

ROLAND WEATHERHEAD, *Psi, Santa Barbara*

DON ED EVERETT, *Tau, Florida*

CHARLES WRIGHT, *Lambda, Kansas U.*

"The Place of APO on the College Campus"

A Series of Five-Minute Talks by

DEAN A. C. ZUMBRUNNEN, *Alpha Omicron, S. M. U.*

PROF. I. R. HOENER, *Alpha Alpha, Illinois*

PROF. A. L. THOMAS, *Delta, Alabama Tech*

"The Responsibility of Scouting Advisors in Alpha Phi Omega"

An Address by C. J. CARLSON (CHI, U. C. L. A.)
Regional Scout Executive, Region Seven
Boy Scouts of America

1:00 FELLOWSHIP LUNCHEON JOHN D. WRIGHT (ALPHA THETA, OMAHA U.)
presiding

Invocation.

Singing.

Address HAROLD F. POTE (BETA IOTA, N. Y. U.)
National Director of Personnel
Boy Scouts of America

2:00 CLOSING SESSION H. ROE BARTLE, presiding

Reports of Discussion Groups.

Legislation.

Report of Constitution and By-Laws Committee.

Report of Alumni Organization Committee.

Report of Extension Committee.

Report of Ritual Committee.

Report of Songs Committee.

Report of Resolutions Committee.

Report of Nominating Committee.

Election of Officers.

Question Box.

Closing Challenge GEORGE H. CHARNOW

Convention Discussion Groups

PRESIDENTS

Henry Pohndorf (Alpha Chi, M. I. T.) Chairman
Richard F. Fletcher (Gamma Pi, Michigan) Co-chairman
H. Roe Bartle (Iota, Park College) Advisor

VICE-PRESIDENTS

Marlin Remley (Beta Psi, Southeast Mo. S. T. C.) Chairman
T. W. Lacy (Lambda, Kansas) Advisor

SECRETARIES

Homer Still (Tau, Florida) Chairman
Sidney B. North (Pi, Kansas State) Advisor

TREASURERS

Jon Hopkins (Eta, Northern Illinois S. T. C.) Chairman
Dr. Edwin C. Johnson (Omicron, Iowa) Advisor

HISTORIANS

James Gleason (Beta Theta, Wisconsin) Chairman
Prof. A. L. Thomas (Delta, Alabama Tech) Advisor

ALUMNI SECRETARIES AND SERGEANTS AT ARMS

C. L. Gremillion (Alpha Epsilon, Louisiana State) Chairman
Kenneth Cedarland (Lambda, Kansas) Advisor

PROGRAM AND PUBLICITY COMMITTEEMEN

Edwin Bankson (Kappa, Carnegie Tech) Chairman
Dean Arno Nowotny (Alpha Rho, Texas) Advisor

CAMPUS PROJECTS COMMITTEEMEN

Thomas S. Sligh (Alpha Rho, Texas) Chairman
Kent D. Shaffer (Kappa, Carnegie Tech) Advisor

COMMUNITY PROJECTS COMMITTEEMEN

Charles Pound (Phi, Syracuse).....Chairman
 Dr. Ray O. Wyland (Alpha, Lafayette).....Advisor

MEMBERSHIP COMMITTEEMEN

(Chairman to be selected)
 Dr. Lester I. Tavel (Alpha Omega, K. C. O. S.).....Advisor

FELLOWSHIP COMMITTEEMEN

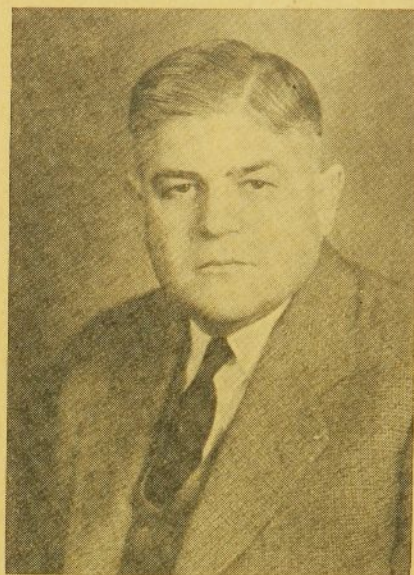
STANLEY LONTKOWSKI (UPSILON, MILWAUKEE).....Chairman
 George H. Charno (Alpha Eta, K. C. U.).....Advisor

SCOUTING ADVISORS

Delmer H. Wilson (Gamma Mu, Evansville).....Chairman
 C. M. Finnell (Alpha Alpha, Illinois).....Advisor

FACULTY ADVISORS

Rev. L. A. V. DeCleene (Alpha Nu, St. Norbert).....Chairman
 Dr. M. C. Hayes (Eta, Northern Illinois).....Advisor



Prof. Kent D. Shaffer

... Faculty Advisor of Kappa Chapter. Professor at Carnegie Institute of Technology. Energetic leader in spreading interest in Alpha Phi Omega in eastern colleges. Member of the National Executive Board. Prominent in service activities on his campus. He will be advisor to the campus projects discussion group at the National Convention in Indianapolis.

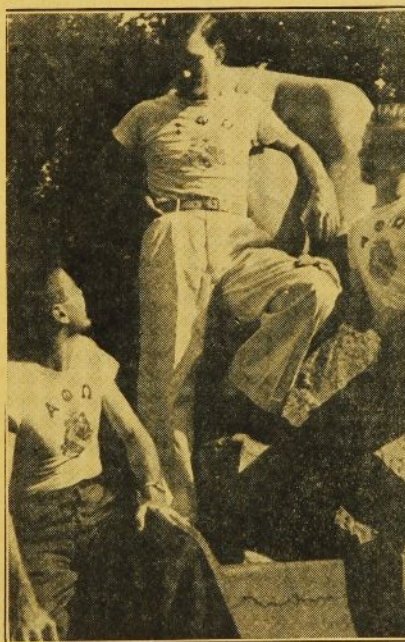
CONVENTION SERGEANTS AT ARMS

JOE BEASLEY, *Iota, Chairman*
 BILL WALLACE, *Alpha Mu, William Jewell*
 CHRIS OVERGAARD, *Beta Epsilon, Ia. S.T.C.*
 JOE KAUFMAN, *Alpha Phi, Wash. U.*
 JAMES THIGPEN, *Beta Delta, East Texas*
 MELVON WILKS, *Beta Nu, Tahlequah*

ASSISTANT CONVENTION SECRETARIES

ROBERT BECKER, *Beta Gamma, Central Y.*
 HERMAN REESE, *Alpha Kappa, U. S. C.*

T-SHIRTS ARE POPULAR AT ILLINOIS



This picture shows Brothers Carl Withner, Bob McCreary and Christy Broughton of Alpha Alpha Chapter wearing the T-shirts which their chapter has popularized throughout our fraternity. Carl is chapter president, Bob is past president and Christy is chairman of the special T-shirt committee.

The wearing of these shirts was started in Alpha Alpha several years ago. Soon the chapter absorbed the cost of the die and offered to make the shirts available to members of other chapters at 50c each. Many chapters have ordered and received these attractive shirts and more requests are being received day by day.

Do you have your T-shirt? If you order one NOW it can be delivered to you at the National Convention without mailing cost. If you order for mail delivery, add 15c for packing and postage. Send your order to Christy Broughton, 345 Newman Hall, Champaign, Illinois.

MAN OF THE MONTH



Bill Barton

Recently selected for "Who's Who Among Students in American Universities," William Arthur Barton is president of Alpha Rho Chapter of Alpha Phi Omega at the University of Texas. Under his leadership Alpha Phi Omega is making great strides at the University of Texas.

He is a member of the Y. M. C. A. cabinet, the orientation council, the upperclass council, the league of student organizations and has been selected as chairman of the freshman orientation council for 1941-42. He was chief registrar of national registration day on the Texas campus and with him were all the members of Alpha Rho Chapter as registrars. They registered almost 3000 men.

He is a junior in mechanical engineering and his home is in Shreveport, Louisiana.

His energy is boundless, his spirit is unfaltering, his leadership is efficient and effective. The Torch and Trefoil proudly commends President Barton.



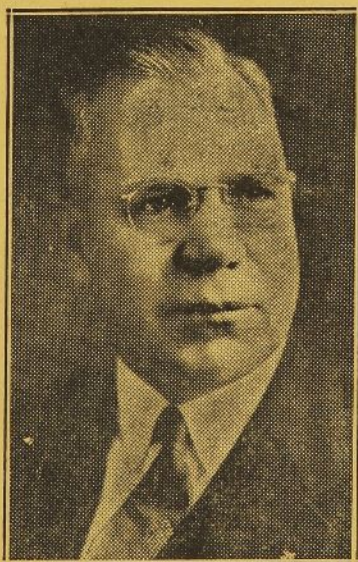
Dr. Lester I. Tavel

... Past President of Mu Chapter. Founder of Alpha Omega Chapter. Physician and Surgeon. A community leader of exceptional ability and consecration. A tireless worker in the interest of Alpha Phi Omega. Prominent leader in many conventions and conferences. Strong exponent of greater manpower, he will serve as advisor of the membership committeemen's discussion group at the Indianapolis convention.



Rev. L. A. V. DeCleene

... Senior Faculty Advisor of Alpha Nu Chapter. Professor of Mathematics and Physics, Dean of Men, St. Norbert College. Prominent leader in three national conventions. Enthusiastic exponent of strong faculty support for all Alpha Phi Omega Chapters. He will serve as chairman of the faculty advisors discussion group at 1940 National Convention in Indianapolis December 28 and 29.



C. M. Finnell

... Veteran chairman of Alpha Phi Omega's national extension committee. Member of Mu and Alpha Alpha chapters. Deputy Regional Scout Executive, Region VII, and constant promoter of Alpha Phi Omega throughout Illinois, Wisconsin and Michigan. Leader in many conventions and conferences. He will report the extension progress of APO for the past two years at the Indianapolis convention.

GAMMA SIGMA CHAPTER

(Continued from Page 2)

President Bartle officiated at the conference.

After the ceremony Gamma Sigma Chapter entertained its guests at a banquet. President Bartle presented the chapter charter to Brother C. J. Carlson, Regional Scout Executive, who in turn presented it to Dr. E. T. Filbey, Vice-President of the University. Dr. Filbey then presented the charter to Brother Ted Hollander, President of Gamma Sigma Chapter, and thence to Brother Frank Psota who accepted it on behalf of the chapter. The officers elected and installed to serve Gamma Sigma Chapter during its first term are:

Ted Hollander.....	President
Ed McKay.....	Vice-President
Melvin Tracht.....	Secretary
Bill Sears.....	Corresponding Secretary
Daniel B. Gauss.....	Treasurer
George Crapple.....	Historian
Seymour K. Cohn.....	Alumni Secretary
Eugene Mindell.....	Sergeant at Arms
Dean Zens L. Smith.....	Senior Faculty Advisor

The advisors of the new chapter, in addition to the Senior Faculty Advisor, are:

Prof. J. D. Fisher.....	Assoc. Professor of Geology
Prof. M. Freeman.....	Professor of Business
Forrest A. Kingsbury.....	Secretary, Department of Psychology.
Prof. Wm. Scott Gray.....	Professor of Education
Howard W. Mort.....	Director of Men's Club.
Leon P. Smith.....	Dean of Students.
Carle W. Handel.....	District Scout Executive.
George A. Ryan.....	District Scout Executive.

Following the presentation ceremonies, President Bartle gave the principal address of the evening, including the charge to the new chapter. His inspiring talk stressed the importance of Alpha Phi Omega to the youth of America and contrasted our work to that of youth movements abroad. Fellowship and singing closed the evening's activities.

EXHIBITS AT NATIONAL CONVENTION

The Exhibits Committee for the National Convention, under the direction of Chairman Dick Schnell of Purdue, is arranging the finest exhibits ever displayed at an APO convention. The committee has requested your chapter secretary to send a 3 x 4 foot panel upon which is placed pictures, newspaper clippings, printed materials and other items which will tell a visual story of your chapter activities. Included should be your school pennant or banner to be put up in the convention hall.

CHECK UP NOW to see that your chapter will have an interesting exhibit at Indianapolis.

GAMMA PI CHAPTER

(Continued from Page 2)

Chapter, the second unit of Alpha Phi Omega in the state of Michigan was installed at the University of Michigan with twenty-seven students and eight advisors. National President H. Roe Bartle officiated with the splendid assistance of the degree team of Beta Beta Chapter under the direction of President Dick Alman.

Among the distinguished visitors at the installation banquet were Dean Joseph E. Bursely, dean of students, Scout officials and members from the preparatory group at Western State Teachers College.

Following introductions by Brother Walter Van Hoek, toastmaster, Brother Bartle delivered an inspiring address to the group.

The officers of Gamma Pi Chapter elected and installed are:

Richard F. Fletcher.....	President
Leo A. Jachowski.....	Vice-President
John H. Hoglund.....	Secretary
Richard O. Schoel.....	Treasurer
Irving C. Koval.....	Historian
Albert K. Ludy.....	Alumni Secretary
Alfred S. Leiman.....	Corresponding Secretary
John M. Duff.....	Sergeant-at-Arms
Ira W. Smith.....	Senior Faculty Advisor

The advisors in addition to the senior faculty advisor are:

Shirley W. Smith.....	Vice-President of the University
Fielding H. Yost.....	Director of Athletics
F. N. Menefee.....	Professor of Engineering
Lee O. Case.....	Professor of Chemistry
Avard Fairbanks.....	Professor of Fine Arts
Walter MacPeck.....	Scout Executive
Harold S. Price.....	Assistant Scout Executive

With a full year of campus and community service as a background and an extensive program under way for the ensuing year, Gamma Pi Chapter expects a great future.

LOOK! A SONG CONTEST

New songs are needed for Alpha Phi Omega, to tell of the spirit, enthusiasm and program of our fraternity; songs to be published for use in all chapters.

Songbirds, here's your opportunity! A rousing contest will be staged at the Indianapolis convention to bring forth some snappy new songs of APO. A special song committee will be appointed to select the songs most adaptable for permanent use.

A \$5 cash prize will be awarded for the best new APO song to a popular tune.

Bring a new song to the convention!
Win the cash prize!