

Torch & Trefoil

Fall '71



Torch & Trefoil

Alpha Phi Omega
National Service Fraternity

Volume 47, No. 1
Fall 1971

National Officers

Aubrey B. Hamilton.....St. Louis, Mo.
National President
Lt. Col. Lucius E. Young.....Washington, D. C.
National Vice President

Executive Committeemen

George F. Cahill.....Pittsburgh, Pa.
Irwin H. Gerst.....Palos Verdes Peninsula, Calif.
Douglas M. Harris.....Edison, N. J.
Richard L. Tombaugh.....Lafayette, Ind.
Dean Lewis N. Jones.....Lubbock, Tex

Legal Counsel

Dr. H. Roe Bartle.....Kansas City, Mo.

National Executive Director

Joseph Scanlon.....Kansas City, Mo.

TORCH AND TREFOIL is issued regularly four times a year, October, December, March and May, from Office of Publication, 1100 Waltower Building, 823 Walnut Street, Kansas City, Missouri 64106. Printed by Smith-Grieves Company, Printers and Lithographers, Kansas City, Missouri. Second Class Postage paid at Kansas City, Missouri. Subscription price \$1.50 per year.

The Buck Stops Here!

The Fraternity's national Service projects, Removal of Architectural Barriers and assistance to the Peace Corps, are attracting more and more attention and participation. The Peace Corps reports APO chapters went the second mile in effective efforts to help it last Spring; The Congressional Record has taken notice of the Architectural Barriers project and the New York State Legislature's hearings on the Problems of the Handicapped will be held in Syracuse this fall to learn of the APO approach at first hand.

Isn't it exhilarating to be part of an organization that has set its course to Remove Architectural Barriers to the Handicapped by persistent and peaceful persuasion, based on a study of the needs and a willingness to share in the solution, and not just in the findings?

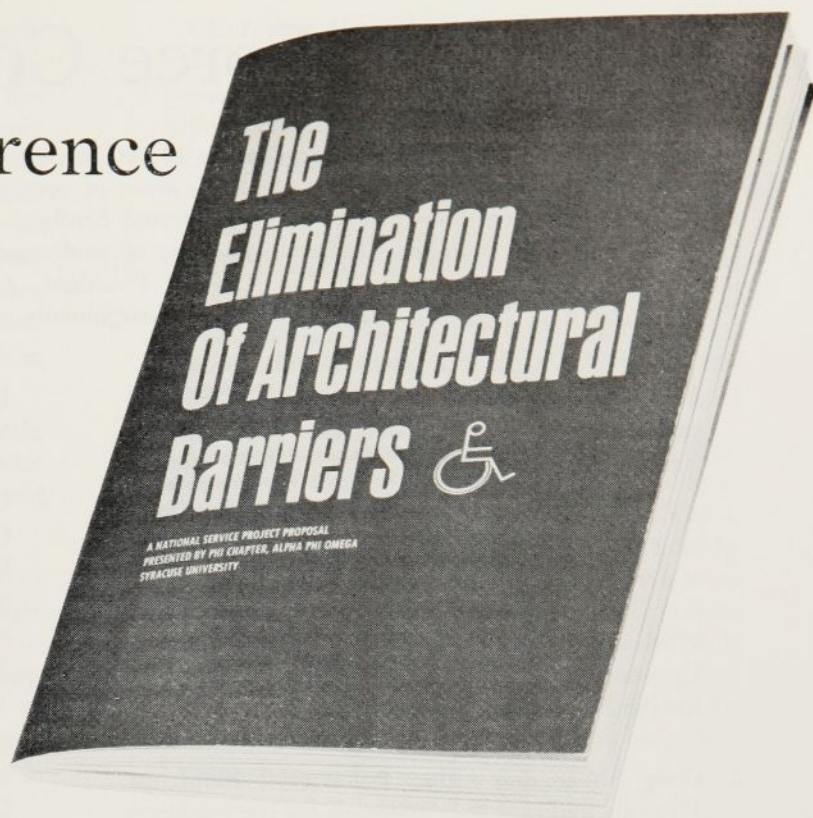
In Alpha Phi Omega we don't "Leave it to George." We respond.

How true this is was set out in a remarkable article in the Charlotte Observer, written by their well known and widely read columnist, Kays Gary. Under date of May 16, 1971, he described Brothers of Tau Beta, Appalachian State College, Boone, N. C. 28607, on the march from Boone to Winston-Salem. Passers-by might have thought them to be "hippies."

"There 'they' were in the pouring rain trudging along the highway, a motley crew, some with beards and a few with long, wet hair. Some carried placards . . . Reason? Fellow named Jack Young, Age 22. Jack of West Jefferson, would have become a member of their fraternity if a terrible disease hadn't made both his kidneys useless."

You guessed it, Jack required a Kidney Transplant—Cost about \$25,000. "So Alpha Phi Omega Cats, short-hair, long-hair, beards and all, were marching," and he summarized his story by entitling it, "What Those Kids Were Up To Was Trying To Save A Life." And they are still trying and still need contributions.

The Man Makes the Difference



The shouters and doubters of the day point to the average man's inability to influence his times. To them the individual no longer counts. They should meet Brian McLane.

Brian occupies a wheelchair, most of the time, and spends most of his time concerned about others. Many of the Brothers met him at the Dallas Convention '70 last December. He put us all to shame by his humility, and his effervescent cheerfulness. He had something to tell us and it concerned the Elimination of Architectural Barriers on Campus and in the Community. And no one does it more effectively than he.

His Brothers in Phi Chapter, when he was at Syracuse University, felt they were doing a Service on the highest level by assisting him. And they were. But Brian brought them up short by asking what they were doing for others on campus, some more handicapped than himself. So he motivated them to seek and find the facts. The results: An eye opening study on the Elimination of Architectural

Barriers, published in book form, that has excited interest on a National scale.

Some say Alpha Phi Omega needs to be better known. Few would disagree. Some evidence of what Brian as an individual and APO as an organization can do is shown in the inquiries about the APO National Project, Elimination of Architectural Barriers, which were received and answered in the past ninety days. They included:

American Association for Health, Physical Education and Recreation, Washington, D. C.; Easter Seal Society, Pierre, S. D.; Missouri Society for Crippled Children and Adults, Inc., St. Louis, Mo.; Nassau Society for Crippled Children and Adults, Albertson, Long Island, N. Y.; Frost National Bank, San Antonio, Texas; Urbandale School District, Des Moines, Ia.; Governor's Committee on Employment of the Handicapped, Des Moines, Ia.; Easter Seal Society, New York,

N. Y.; The Rouse Company, Columbia, Md.; Mayor's Advisory Committee on the Handicapped, New York, N. Y.; Handicapped Student Services, SIU, Carbondale, Ill.; Department of Special Education, University of Southern California, Los Angeles, Cal.; Governor's Commission on Employment of Handicapped Persons, St. Paul, Minn.; Rehabilitation Gazette, Chagrin Falls, Ohio; Easter Seal Society for Crippled Children and Adults, Portland, Ore.; Governor's Commission on Employment of the Handicapped, Columbus, Ohio; State of Ohio Rehabilitation Services Committee, Toledo, Ohio; Easter Seal Society for Crippled Children and Adults, Omaha, Neb.; Texas Institute for Rehabilitation and Research, Houston, Texas; State Board of Vocational Education, Division of Vocational Rehabilitation, Institute, W. Va.; Monterey Nursing Inn, Grove City, Ohio.

Task Force Committees

The National President, as of September 1, has appointed the Brothers listed below to serve on the Twelve Task Forces studying the Fraternity's areas of concern. Vacancies exist on all twelve to bring them up to the 20 members projected for each. Interested Brothers are invited to send in their name, campus address and telephone number. Designate in order of preference the Task Force or Forces in which you are interested. Address your letter to the National President, Alpha Phi Omega Fraternity, 1100 Waltower Building, Kansas City, Mo. 64106. Task Force assignments and members as of September 1 are as follows:

1. **Architectural Barriers:** To develop guidelines to enable chapters to achieve the goals of this National Project.

Chairman: Fred Pollock, Phi, Syracuse University; Paul H. Schipper, Zeta Sigma, University of Delaware; Jeff Bost, Omicron Omicron, Pfeiffer College; Robert J. Palmer, Gamma Phi, Western Michigan University; John Tomlinson, Upsilon Upsilon, College of St. Thomas; Kenneth Luebke, Chi Iota, Bemidji State College.

2. **Drug Abuse and Other Behavioral Problems:** To study and assemble materials for the guidance of chapters and chapter members.

Chairman: Norman York, Theta Pi, Indiana Central College; Jeff Hoffman, Zeta Theta, Drexel Institute of Technology; Dennis Urick, Xi Alpha, Muhlenberg College; John Simpson, Pi Delta, Western Carolina College; William Edwards, Tau Beta, Appalachian State College; Jim Heilig, Nu Mu, University of Minnesota—Duluth; Gerald Brewer, Lambda Epsilon, St. Cloud State College; Mel Nishida, Gamma Beta, San Jose State College; Bob Nielson, Alpha Delta, San Diego State College.

3. **Meaningful Service Projects:** To study projects presently conducted by chapters and to help chapters determine the types of projects relevant and suitable to present-day campus and community needs.

Chairman: Bill Bangerter, Phi Chi, Missouri Western College; Pete Nicholson, Mu Eta, Albright College; Justin Culkowski, Phi, Syracuse University; Robert Ward, Chi Lambda, Elizabeth City University; Ernest Craig, Upsilon Tau, Shenandoah College; Tom W. Gornick, Alpha Rho, University of Texas; Bobby Templeton, Beta Delta, East Texas State College; Jerry Souta, Omicron Mu, Carthage College; Al Niebuhr, Eta Kappa, Stout State University; Mike Sarfaty, Alpha Delta, San Diego State College;

Dave Corning, Gamma Alpha, University of Washington.

4. **Cooperative Programs with Other National and Community Organizations:** To develop guidance for chapters in working with national and community organizations such as the Peace Corps, service clubs, veterans organizations, hospitals, Scouting, youth groups, etc.

Chairman: Albert Nucciaroni, Epsilon Mu, University of Maryland; Dave Lee, Alpha Chi, MIT; Ron Nelson, Delta Phi, Johnson C. Smith University; Wesley Clark, Mu Alpha, Georgetown University; Rudy Hemman, Xi Beta, Kearney State College; Tom Kuzma, Eta Lambda, Wisconsin State University—Eau Claire; Walter Zeisl, Chi, UCLA; John Hall, Zeta, Stanford University.

5. **Housing:** To develop guidelines for chapters on what can and cannot be done under the terms of the present housing by-law and to determine needs for chapter office space and communication centers.

Chairman: R. J. "Sam" Tessen, Eta Lambda, University of Wisconsin—Eau Claire; Len Tower, Alpha Chi, MIT; Michael Isler, Mu Gamma, Morgan State College; James Flodine, Alpha Rho, University of Texas; Craig Hanson, Mu Theta, Luther College; Mickey Jalbert, Rho Gamma, California State College—Long Beach; Ted Braid, Eta Omega, University of Montana; Rick Peterson, Omicron, University of Iowa; Steve Weatherford, Drake University.

6. **New Member Training:** To draft a program for obtaining and training new members and to determine whether the present notion of pledging and pledge training, and all it signifies, needs revision.

Chairman: Terry Fraley, Gamma Zeta, Georgia Tech; Maury Goodman, Alpha Chi, MIT; James

Pearce, Jr., Zeta Theta, Drexel Institute of Technology; Paul Sparks, Sigma Kappa, Eastern Baptist College; Eddie Boylan, Upsilon Nu, Wilmington College; Chips Chapman, Sigma Rho, Elon College; Jerry Morelli, Alpha Iota, Ohio State University; Charles Gruenke, Lambda Sigma, Wisconsin State University—Stevens Point; Dick Brumbaugh, Gamma Psi, University of Minnesota—Minneapolis; Stormy Weathers, Alpha Delta, San Diego State College; Steve Garrison, Eta Omega, University of Montana.

7. **Chapter Officer Training:** To consider materials, publications and programs needed to provide each chapter with guidance for its officers and advisors in meeting their responsibilities.

Chairman: Roger Martoken, Pi Tau, St. Peter's College—Evening Division; Robert J. Harris, Iota Lambda, North Carolina State College; Thomas Slaughter, Eta Phi, American University; Tommy E. Weaver, Xi Delta, Texas A & M University; John Hoy, Mu Rho, Upper Iowa University; Blake Boer, Iota Phi, University of California—Davis; Jay Bloom, Chi, UCLA.

8. **Chapter Financing:** To determine what successful chapters do to raise funds for their projects and programs and how they care for and remit to the national office fees for pledges, initiates and annual per capita. This Task Force is expected to innovate and propose a national money earning project which can be shared in by chapters and the national fraternity.

Chairman: Lee Schleicher, Lambda Tau, Salem College; David H. Mehlen, Nu Chi, Winston Salem College; Salvatore DeSapio, Rho Mu, Belmont Abbey College; Jeff Hammergren, Theta Nu, Hamline University; Jerry Anderson, Nu Pi, Mankato State College; Dave Jakobs, Eta Omega, University of Montana; Marion Talso, Iota Phi, University of California—Davis.

9. **Fraternity Ideals and Practices:** Develop ways to demonstrate the relevance of Fraternity ideals to the advancement of chapter programs and individual competence. Demonstrate means of matching action and ideals in activities and projects both locally and nationally. Provide amplification of our ideals and objectives suitable for use in fraternity activities. Give leadership to a Fraternity-wide effort to advance the primacy of service within a framework of fraternal association.

Chairman: Alan Thieman, Omicron Xi, Denison University; Robert Young, Alpha Chi, MIT; George Neil, Theta, University of Virginia; Grady Sellers, Beta Delta, East Texas State University; John Hendricks, Chi, UCLA; David Scanlon, Nu Omega, University of Alaska.

10. **Fraternity Rituals:** To consider the present Rituals and proposed additions and to suggest such changes as it deems desirable for the consideration of the National Board of Directors and Con '72.

Chairman: Robert P. Skolnick, Gamma Phi, Western Michigan University; Jerry Goldberg, Alpha Chi, MIT; Louis Gross, Zeta Theta, Drexel Institute of Technology; Carl Janson, Mu Eta, Albright College; Rod Updegrove, Jr., Theta Chi, George Washington University; Linwood Wooldridge III, Zeta Phi, Howard University; Bob Kendall, Omicron Mu, Carthage College; Robert Hampi, Lambda Epsilon, St. Cloud State College; Wayne Campbell, Eta Omega, University of Montana.

11. **The Role of Women Students in Service Projects:** To explore ways and means for chapters to involve women students in APO Service projects.

Chairman: Phil Wu, Zeta, Stanford University; Robert Elkin, Alpha Chi, MIT; Mike Driggers, Sigma Upsilon, University of North Carolina—Charlotte; Robert Aiello, Alpha Iota, Ohio State University; Richard Ritter, Omicron Xi, Denison University; Jim Fiero, Theta Nu, Hamline University; Steven Schleifer, Beta Theta, University of Wisconsin—Madison; Doug Ure, Eta Omega, University of Montana.

12. **Convention Site Selection:** To provide guidelines for the selection of National Convention sites, with specific reference to transportation costs, accessibility, chapters in the area available to provide manpower, and adequate hotel facilities for housing, committee meetings, and meal service.

Chairman: Vernon Bartle, Xi Delta, Texas A & M University; Jim Carroll, Phi Kappa, University of North Carolina—Greensboro; William Hawkes, Chi Gamma, Madison College; Bruce Goranson, Alpha Rho, University of Texas; Mark D. Norgaard, Mu Sigma, South Dakota State University; Mark Merryman, Gamma Alpha, University of Washington; Russ Williams, Eta Omega, University of Montana.

action...

Teen-Center Gym



Shown here are Brothers of Zeta Delta Chapter of Miami University, Oxford, Ohio, working on a youth center in Camden, Ohio. Zeta Delta restored an old gymnasium, now used as a teen-center and coffee house. The chapter does much work with underprivileged and handicapped children in the area.

Northern Illinois Sectional

Eta Chapter will host the Northern Illinois Sectional Conference, scheduled for Oct. 9-10 on their campus, Northern Illinois University. Eta's distinguished Advisor, Dr. Michael L. Thompson, will be a featured speaker. Two short Service projects will be conducted in connection with the conference.

Life Members and Alumni—Attention!

Your know-how and inspiration are needed to fill out Sectional staffs, which service chapters through visitations and counseling.

Notify the nearest Sectional Chairman or Regional Representative if you're interested. If you can't locate them write the National office and the information will be forwarded to the proper leaders.

Action at Brooklyn, CUNY

Action is Leadership in Gamma Iota Chapter this fall. Brother Harris Cohen was recently elected President of the Student Body, and six other Brothers were chosen to serve as representatives in the Student Legislature. Amongst numerous chapter activities, it is rewarding to see Gamma Iota Brothers forging ahead in leadership on the Brooklyn College campus.

Citation to Alpha Psi

Members of Alpha Psi Chapter at Lehigh University were awarded a Citation of Merit for their work in last spring's Muscular Dystrophy Campaign. Brothers and pledges solicited donations at a shopping center during the "Shamrocks for Dystrophy" drive. The \$150 collected was double the amount collected last year in the same area.

Joy in Service

Seeing is believing, and it's convincing too.

Gamma Zeta, Georgia Tech, supplied the front cover photo, which shows an Atlanta Playboy Bunny about to score. Representing APO are, left, William Pickel, Director of Placement, and Dean of Students James Dall.

The occasion was A Phi O's an-

nual Bunny-Faculty Basketball game last April 5. A select squad from the faculty and administration challenged a bevy of bunnies, from Atlanta's Playboy Club. Some of the fouls called were unbelievable, but so were some of the fouls committed! Even Dr. Arthur Hansen, President of Georgia Tech, was bodily carried by the Bunnies off the court and into their dressing room. Over 1,000 students, who contributed more than \$500 to the March of Dimes, enjoyed the fun as the Bunnies decimated the faculty 59-26.



Michigan Plans Expansion

Plans for APO expansion in Michigan were made when representatives of eight chapters met last July with Sectional Chairman Berkeley P. Duncan. The session was held at Camp Kanesatake, the Scout reservation at Cambridge Junction, Mich.

"Michigan intends to lead in sectional expansion of membership and chapters this year," Chairman Duncan reports.

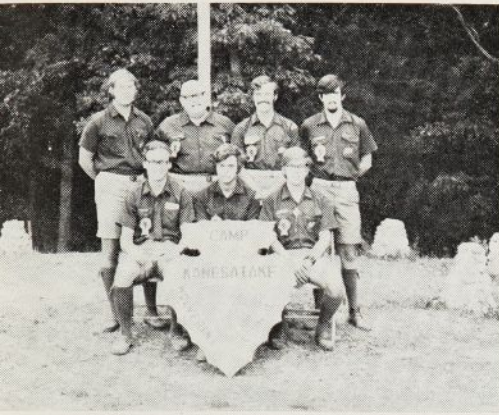
Pictured above are representatives of eight chapters at a Michigan summer planning session.

OUR RITUALS

By Robert Skolnick "RS"

Chairman, National Task Force on Rituals

APO Men Serve Scouting



Pictured above are APO Brothers who served on the staff at Camp Kanesatake, conducted by the Wolverine Council, BSA, Dundee, Mich. Front row—left to right: David Scarcliff, Chi Mu, Henry Ford Community College; Mark Sebenar, Gamma Phi, Western Michigan University; Dean Fritz, Beta Beta, Michigan State University. Back row—Left to Right: Ted Post, Upsilon Gamma, Lake Michigan College; Berkeley P. Duncan, Section 54 Chairman; Greg McGowan, Upsilon Gamma, Lake Michigan College; Wayne Laviolette, Chi Mu, Henry Ford Community College.

The Task Force on Fraternity Rituals has been very active since its appointment. We have been working on defining what rituals should accomplish, and on what our Fraternity is. Now we are beginning work on revising the text.

Our Rituals must interpret the purpose, principles, and development of Alpha Phi Omega. It is a meaningful interpretation which we seek to develop. In a letter I received from our National President, Aubrey Hamilton, he stated, "The Rituals should reflect the fact that Alpha Phi Omega stands for definite principles and that it is not an organization that attempts to be all things to all persons and ends up by being nothing of consequence. What the Task Force on Rituals hammers out will actually reflect the kind of organization it believes Alpha Phi Omega to be."

In my initial letter to Task Force members I asked them to consider what APO is, and as opening questions concerning the rituals: Should APO have official opening and closing rituals for meetings? What should the role of God be? The flag? The Pledge of Allegiance? What should the role of singing be in our rituals? The Scout Oath, Law, Sign? Should we have a Fraternity sign? Should there be kneeling? Should we have oaths to take?

In August I spent two days

in Kansas City during which I had the honor of having one and a half hours of the undivided attention of our "Chief," H. Roe Bartle. We spent most of this time discussing our Rituals and the development of our Fraternity. I also had a long talk with Brother Scanlon. At the first National Convention in St. Louis in 1930, he served as Chairman of the Committee on Rituals which drafted the Ritual as we know it today. I received many insights to our Fraternity that their years of service have given them, and many great modernizing ideas.

I sincerely encourage all Brothers in all Chapters to send me your suggestions for ritual revision, following what I consider to be the valid basis I have established: a meaningful interpretation of our purpose, principles, and development. All suggestions will be given careful consideration. A note to Sectional Chairmen: Please schedule a seminar on the Rituals at your Fall Conference and send me the collected ideas. If you would like a member of the Task Force to be present at the Conference contact me and I'll see what I can arrange. (RS, The Conservatory, 1307 Blakeslee St., Kalamazoo, Mich. 49007, 616-344-7913.)

As our Ritual states: "Others will judge the Fraternity by your conduct and your adherence to its known standards." These are what we must stress,

A NEW CHALLENGE —

Alpha Phi Omega 1971-72

By Gerard J. Kennedy
Region One Representative



Major political and social events of the past decade have served to change the very course of higher education in the United States.

Now that Service and involved action are "in" activities for most undergraduate organizations, Alpha Phi Omega faces a new challenge—that of maintaining its traditionally independent role of leadership in Service for the betterment of American higher education. Although our statement of purpose was composed in 1925, it clearly states our still appropriate and primary goal: to "provide Service to humanity; to further the freedom that is our national, educational and intellectual heritage." Our challenge for the '70's is to discover new and better ways to fulfill this relevant and important purpose.

Plan to Evaluate Chapter Activities

"Easier said than done."
"Great, but who's got the time."
"Yea, just try and get our Brothers to think up new ideas."

But the simple fact is that action is never complete without evaluation—and evaluation never occurs without feedback. In short, by structuring a goal-setting meeting, chapter projects and activities can be discussed and evaluated, and evaluations channeled into constructive plans for the next semester.

A Point of Departure

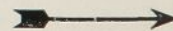
As a premise, adopt the principle that the only constant factor in a successful Service program is the need for constant change in response to the changing campus situations and attitudes. As an operational policy, be sure that chapter members are willing to assume accountability for the accomplishment of projects emanating from these group decisions. The steps to accomplish a goal-setting meeting are few. In brief, the following are suggested:

FIRST—Draw the members of your chapter together for an evening, a Saturday afternoon, or at some other convenient time. Ask your chapter advisors to participate—so consider their schedules as well. Choose a time when a majority of the Brothers can come. Don't choose a classroom or a public dorm lounge. Find a spot where everyone can

be at ease, where interruptions will be minimal, and where all members can be seated face to face.

SECOND—Ask a chapter member who understands, and who has the respect of the members, to present a brief discussion on the purposes and intent of the Fraternity. Then, let the discussion happen—wide open—and let the members decide what they feel are the Chapter's most successful and least successful accomplishments. Make sure someone takes notes, listing the key points and the person who made the best presentation.

THIRD—Decide on logical goals—summarizing both the successful and the not-so-successful accomplishments. For example, membership. Your chapter may draw a large number of prospective pledges to a smoker, but only a few men decide to pledge. List activities designed to change this: Better year-round publicity to improve the chapter image, better program for the smoker, better speakers, etc. The category "finance" might be listed. Other categories might be "communications" (both intra-chapter and inter-sectional), "utilization of advisors," "alumni participation," "types of Service projects," etc.



Introducing JIM DONNALLEY

National Service Representative

Alpha Phi Omega service to chapters will continue this year with the return of Jim Donnalley on the National Service Staff. Jim was appointed last year at the close of the National Convention.

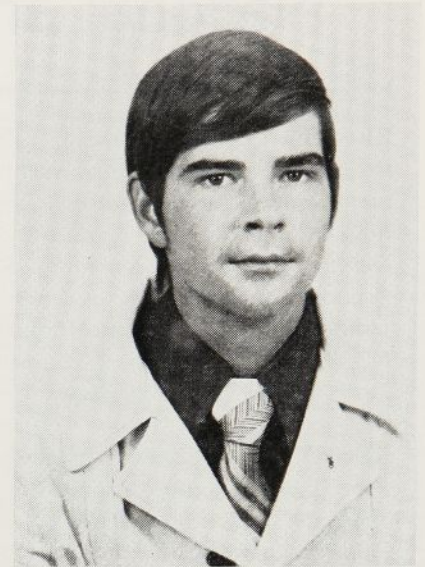
Brother Donnalley is Past President of Tau Xi Chapter, Westminster College, and Lambda Iota Chapter, New Mexico State University. He has participated as a delegate in the 1968 and 1970 National Conventions. While completing his B.A. in Government, he was also active on the Varsity Ski Team, Student Senate, Circle K, and Sigma Pi Fraternity. An Eagle Scout and member of the Order of the Arrow, Jim has spent his summers on the Staff at Philmont Scout Ranch. He is the first Staff man in APO to ever start two chapters as an undergraduate.

APO lives or dies on campuses. The national and sectional leaders are ever conscious of this fact. They are not a substitute for chapter officers and advisors and they know it. It is equally true, however, that the Fraternity cannot conduct interchapter sectional conferences and training seminars without the assistance and support of Sectional Chairmen and Regional Representatives. These volunteer APO leaders and alumni, off campus, can and do assist chapters and help form new ones.

In recent years the National Fraternity has realized more and more that dedicated volunteer leaders can only give limited and occasional time to Fraternity administration. The need for a full-time national APO staff of traveling National Service Representatives is now an accepted and essential part of APO.

For many years the only full-time APO national staff representative was the National Executive Secretary, now designated as the National Executive Director. One full-time man, trying to service the entire United States, was obviously not enough.

Good luck, Jim. We know Brothers on many campuses will find you their helpful partner in building a bigger and better fraternity.



ALUMNI: Jim finds Sectional Chairmen need qualified Alumni Brothers to visit and assist Chapters. Interested alumni should contact the Sectional Chairman in their vicinity or the National Office and ask them to forward the information.

NEW CHALLENGE—

FOURTH—This step is probably the hardest. Determine specific action to accomplish each goal. Often, new and innovative methods will be necessary. In each case, define the broader, more long term goals in terms of immediate actions which can take place within a semester. A broad goal, divided into manageable short term goals, makes the operation much easier.

FIFTH—Prepare a listing of the long term—broad goals—and list the short term—specific goals—below each major point. Give every member a copy. Then ask each member to help attain the short term goals. Ask him to complete his assignment within a specified time limit.

There is a CAUTION, however. A very real danger exists if members forget their purpose and the definite unique-

ness of Alpha Phi Omega. Don't allow your chapter to compete with other campus organizations; for this will destroy your efforts. Find the void in Service to the students, faculty and campus of your college, and then decide to fill that void. Then your chapter will be "right on" to the success which has been the tradition of Alpha Phi Omega for nearly fifty years.

News and Views National and Regional

REGION IX—WILLIAM J. VINING, REPRESENTATIVE. *Sectional chairmen from Iowa, Nebraska, Minnesota and the Dakotas, met August 7, with Chairman Vining at Mankato. The region will hold a conclave next April 1-2. A Hobo Day is planned for mid-October at Omaha, Nebraska. Sectional conferences will include Section 23, Minnesota and the Dakotas, October 30-31, at the University of Minnesota—Minneapolis; Section 21, Iowa, November 6-7, Drake University, Des Moines; Section 27, Wisconsin, mid-February, 1972, Green Bay.*

REGION V—PERRY CORRELL, REPRESENTATIVE. *Region Five is off to a fine start for the 1971-72 university year. Sectional chairmen and representatives from Ohio, West Virginia, Western Pennsylvania and Kentucky met in August with the regional representative to determine priorities in providing effective assistance to chapters and sections. Sectional conferences this fall will receive special reports on the twelve Task Forces and how to implement their suggestions. "Every chapter will be urged to build its membership to a size enabling it to render significant service to campus, community and nation. We intend to have Region Five set the pace this year for all its neighbors," Brother Correll writes.*

THE NATIONAL BOARD OF DIRECTORS *will meet in Kansas City, October 1-2. President Hamilton will preside. Committees will report. Plans for Convention '72 will be discussed. Membership, finances, personnel and program will be considered and appropriate action taken.*

Regional representatives will hold special training and information session, Friday evening, October 1, at the Kansas City board session. The five Eastern regional leaders will be headed by the National Vice President, Col. Lucius E. Young; Irwin H. Gerst, regional co-ordinator for the Western regions, will chair that session. Both groups will confer with Douglas M. Harris, membership and extension chairman; George F. Cahill, finance chairman; Richard L. Tombaugh, alumni chairman; and Lewis N. Jones, service chairman. The president and director will discuss Task Forces and chapter and sectional visitation and counseling.

SECTION III—LORIN A. JURVIS, REPRESENTATIVE. *Sectional chairmen in North Carolina, Delaware, Maryland and the District of Columbia met September 11, with the regional representative and with Col. Lucius E. Young, national vice president. The task force chairman for cooperative programs with other national and community organizations, Brother Albert P. Nucciarone, Epsilon Mu, made an excellent presentation. Last year's operations were reviewed and plans made for strengthening existing chapters and forming new ones.*

A Year Of Opportunities

**Earle M. Herbert,
Region X Representative**

Last year was a year of beginnings in Region X—This year, a year of opportunities.

1970-71, a year of strong beginnings:

In southern California, Alpha Delta Chapter—San Diego State—involved all of the third largest city in California in their annual Ugly Man contest. The result? The mayor declared a special Ugly Man Day, the businesses provided prizes and contest space, and a total of \$5,000.00 was turned over to charity.

In northern California, under the leadership of their new Chairman, Sid Smith, Section 4 has become newly revitalized. The result? New interest in National Fraternity affairs, capped by their impressive presence at the Dallas National Convention where Gamma Beta Chapter, San Jose State, narrowly defeated Texas for the Man-Mile Award.

In the Pacific Northwest, things are really beginning to boil. At their Spring Sectional, the Chapters decided to split the old Section into two—Sections 7 and 8—and elected new Chairmen, Dr. Forest Grieves and Andy Ashmore, respectively. By the end of the school year, Gamma Alpha, University of Washington, had reactivated one inactive Chapter and started another on its way.

But these are in the past, what are our present opportunities? Basically, it is the fact that there is an increasing desire among

(Continued on page 15)

RECENT CONTRIBUTORS TO THE A-PHI-O DEVELOPMENT AND GROWTH

The Fraternity acknowledges with pride and appreciation gifts from the Brothers listed below. Nothing bears witness more conclusively to the continuing interest of Alumni in helping undergraduate members and pledges than this lengthening Honor Roll.

THOMAS D. ABEL
DONALD A. ABT
VICTOR C. ALLEN
MARK M. AMBROSE
M. M. AMMERMAN
KENNETH ANDREWS
JACK I. APPEL
PAUL D. AREND
MANFRED O. AWS
DENNIS W. BAKER
F. RAYMOND BALCH
JOE W. BARNES
THOMAS BARNHILL
BEN O. BARR
DR. GLENN R. BARR
JOHN W. BARRON
CHARLES M. BARROW, JR.
PROF. H. C. BARNETT
DR. H. ROE BARTLE
BRIAN F. BAUMGART
ROBERT J. BEHNKE
JOHN E. BERGLUND
DR. JOHN F. BERGNER
STEVEN D. BERKSHIRE
LEE H. BERMAN
ROBERT H. BERNERO
GERALD J. BERRY
THOMAS BESSIRE
OTTO A. BIEBER
W. PRESTON BILZ
KOLAN K. BISBEE
M. D. BLACKBURN, III
STANLEY M. BLUMENTHAL
BRUCE BONNER
JAMES BOONE
EDWARD R. BORCHARDT
JOHN A. BOWER, JR.
J. C. BOYLLS
STRIBLING BOYNTON
ROBERT J. BRADSHAW, JR.
DR. LESTER G. BRAILEY
T. A. BRATKOWSKI
W. BREYFOGLE
JOSEPH H. BRINTON
DR. R. L. BRITTAIN
EVERETT S. BROOKS
GERALD BRYAN
JEAN B. BUCHER
ROBERT B. BUNTING
JAMES G. BURGESS
ROGER BURKET
DR. G. W. BURRIER
TOM BURTON
R. W. BUSKIRK, III
JOHN L. BYRD
GEORGE F. CAHILL
BEN E. CAMPBELL
MICHAEL W. CANNADAY
FRANCIS A. CANHAM
CHARLES S. CANNING
JOHN A. CARNAGHIE
JOHN D. CARTER
LARRY G. CARTER
A. DWIGHT CASTRO
DR. JAMES H. CHAPMAN
WILLIAM K. CHEVERTON
GARRY C. CLAY
JONATHAN F. COHANNE
BERNARD COHEN
CAPT. CLARENCE W. COLE
JAMES W. COLE, JR.
WILLIAM E. COOK
DONALD W. CRAUN
WILLIAM J. CRIELLY, JR.
JAMES M. CROSS
BART C. CUSICK, III
ROBERT L. DABBS
WILLIAM DALTON
ARTHUR W. DAVIDGE
JIMMY F. DAVIS
JOHN E. DAY, JR.
ERNEST DEJAFFE
DELTA RHO CHAPTER
SALVATORE DESAPIO
M. R. DISBOROUGH

PRESTON P. DUNAVANT
BERKELEY P. DUNCAN
LAWRENCE A. DUNN
DENNIS A. DUSZAK
DAN DWORNIK
HAROLD V. EASON
CAPT. TERRY M. EDDLEMAN
GREGORY L. EISENHART
ARTHUR G. ELLIOTT
PHILIP S. ELLWANGER
ELLYWYN C. ENGLOF
RICHARD ERCOLE
CYRUS ETTINGER
DR. ALAN M. FALLICK
RICHARD C. FINKLE
CHARLES L. FISCHER
LESLIE FISHER
CARL FITCH
DR. LEONARD H. FLAX
STEPHEN FLAX
ROBERT F. FOELLER
WESLEY FONG
E. ROSS FORMAN
JOHN B. FORREST
RICHARD D. FOSGATE
GEORGE R. FOSTER
DOUGLAS W. FOX
PAUL D. FOX
WILLIAM FRANZELL
THEODORE F. FREEMAN
CHARLES E. GALLAHER
DR. TOM T. GALT
R. P. CAMINO
JOSEPH E. GEARHEART
VAUGHN F. GEHRT
JAMES GELBERT, JR.
MICHAEL J. GEORGE
IRWIN H. GERST
DR. R. A. GETNICK
FRANK GIANNATTASIO
STANLEY L. GINSBURG
JOHN A. GIRARD
DAVID M. GODDARD
RAYMOND N. GODIN
DANA GOLD
KENNETH A. GOLDBERG
PHILIP N. GOLDBERG
ROBERT T. GOLDEN
ROBERT E. GOLDFIELD
THOMAS R. GOVE
R. W. GRACE
DAVID T. GREEN
WENDELL T. GREEN
DR. JAMES M. GREENWOOD
ROBERT C. GREGORY
JOHN R. GRIGGS
LIC. EMILIO VILLARREAL GUERRA
H. L. GUGGENMOS
WILLIAM GUSTAFSON
ANTHONY W. GUSTWICK
WARREN C. GUTERMUTH
ROLAND A. HAEDGE
BOBBY HAINLINE
THOMAS W. HAIR
JOHN H. HALLMAN
WAYNE D. HALSTEAD
AUBREY B. HAMILTON
WILLIAM HAMMEL
JOHN HANKE
DEREK A. HANKINS
ERNEST E. HANSON
CAPT. THEO. F. HARDIES
T. F. HARDING
WILLIAM B. HARMAN
DICK HARRINGTON
DAVID A. HARRIS
RUSSELL M. HARRIS
ROBERT J. HARTSUYKER
ARTHUR B. HARTZOG
WILLIAM L. HASKIN
HUGH HAYS
JULIUS W. HAYWORTH
G. E. HEDRICK
FREDERICH E. HEILMAN
CHARLES M. HEISTAND

KLAUS P. HENDRIX
EARLE M. HERBERT
RONALD HERRGESELL
DR. JAY HERSHKOWITZ
WILLIAM HERTLEIN
PERRY E. HEWITT
WILLIAM S. HICKS
ROBERT V. HIGGENBOTHAM
RICHARD K. HILE
MARSHALL W. HILL
ROLLIN H. HILL
FRANK T. HILTON
STAN G. HIXON
SUMNER B. HIXON
LAWRENCE B. HOCH
JAMES L. HOEY, JR.
WAYNE E. HOFFMAN
HERMAN I. HOLLAND, II
STUART M. HOMLER
DAN HORSFALL
DONALD HOSKINS
JAMES W. HOSTMAN
JAMES E. HOWEY
DAVID R. HUFF
CLYDE M. HUNT
HEROLD HUNT
TERUO ISHIHARA
PAUL E. ISLEY
ALVIN J. JACOBSON
MICHAEL H. JACOBSON
MELVIN L. JACKSON
LT. GUY JENKINS
RONALD JENSEN
ARDEN J. JOHNSON
CARLTON R. JOHNSON
CHRIS A. JOHNSON
LARRY G. JOHNSON
RICHARD H. JOHNSON
MICHAEL G. JOHNSON
ROBERT B. JOHNSON
LEWIS N. JONES
LORIN A. JURVIS
ROBERT KAROLYI
THEODORE H. KAST
ALLAN L. KATZ
EUGENE M. KAUFMAN
PAUL G. KAYATTA
FRANCIS W. KEARNEY
H. FRED KEEN
T. C. KEILMAN
JOEL D. KENDERDINE
RICHARD F. KERSCHER
J. RICHARD KIEFER, JR.
CARL F. KIEHLER
MICHAEL L. KLEKNER
CAPT. JAMES D. KNIKER
GARTH E. KNOBELOCH
DR. ARTHUR L. KNOBLAUCH
JOHN KOENIG, JR.
EDWARD R. KOHNSTAM
STANLEY J. KOPECKY
PAUL E. KUCHTA
MILTON L. KULT
L. REX LANDIS
DANIEL J. LANDON
CHARLES A. LARSEN
CHARLES LEIDER
MARK M. LEVIN
CLIFTON H. LEWIS, JR.
WILLIAM D. LILLEY
CRAIG E. LITTON
MICHAEL B. LOADER
MORTON LORE, II
THOMAS A. LOUTHAN
THOMAS G. LOVE
EARL M. LOWENSTEIN
ROBERT LUKE
LT. CHRISTOPHER J. LUNA
JEREMIAH A. LYNCH
LAWRENCE MACON
CHARLES H. MARHNKEN
RICHARD N. MAILLOUX
E. W. MALKEWITZ
MICHAEL T. MALLON
A. R. MARTIN

GEORGE R. MARTIN
R. WAYNE MARTIN
VERNON G. MARTIN, JR.
WAYNE A. MARTIN
LOWELL R. MAST
ARTHUR R. MATHESON
GEORGE W. MAYS
MARSHALL MEHRING
BERNARD R. MEINERT, JR.
RONALD A. MELVER
FRANK T. MENDRALSKI
DR. W. WALTER MENNINGER
METRO, NEW YORK ALUMNI
DAVID MEYER
DONALD J. MEYER
DR. HENRY S. MILLER
C. DOUGLAS MILLS, JR.
DENNIS S. MIYOSHI
ALBERT E. MOON
MARTIN MORRIS
ERLE MOTE
DAVID D. MOWRY
WILLIAM A. MURPHY, JR.
DAVID W. MC CAULLEY
DANIEL L. MC CLURE
ARCHIE M. MC GILLIVRAY
ROBERT E. MC KAY, JR.
DR. WILLIAM A. MC MILLAN, SR.
JOHN FRANKLIN S. MC MULLAN
CLAUDE MC NORTON
ROBERT L. NEHER
CLARENCE A. NEITZ
JOEL P. NELSON
R. F. NELSON, JR.
ENCENE NEWHOUSE
KENNETH NEWMAN
GEORGE A. NICKERSON
DENNIS E. NICKLE
SIDNEY B. NORTH
DEAN ARNO NOWOTNY
C. C. NOLEN
DR. GLEN T. NYGREEN
THOMAS E. O'DONOVAN, JR.
HUGO O. OLSEN
KENNETH PACKER
C. W. PAGE, JR.
C. W. PAGE, SR.
JOE PASSMORE
JAMES G. PATTERSON
THOMAS R. PATTERSON
GEN. H. O. PAXSON (RET.)
ROBERT PETERSON, JR.
STEVAN M. PETTIT
REX E. PIELSTICK
RONALD E. PIERSON
RANDALL B. PINNER
DR. S. THEODORE PINSKY
FRED PISANI, JR.
GEORGE POMEROY, III
ALEX PORTEUS, JR.
H. F. POTE
JAMES L. POWELL
JAMES W. PRATT, JR.
RICHARD L. PRINGLE
RICHARD RACUSIN
RODNEY E. RAWSON
RICHARD V. REED
DENNIS E. REEVES
KURT W. REGLING
BRUCE G. REICHOW
ERNEST W. RHODES
STEWART W. RICHARDS
JAMES L. RIEGER
JOHN M. ROBBINS
TRUE E. ROBBINS, JR.
DANIEL G. ROBYLER
JEFFREY ROSENBLUM
TERRY D. ROTHGEB
DAVID J. ROTTER
CAPT. W. A. ROUSSEL
WILLIAM M. RUE
WILLIAM B. RUGH
NATHAN J. SAMBUL
A. MICHAEL SAMOLIS
JOSEPH SCANLON

THOMAS W. SCATTERGOOD
ROGER W. SCHILLER
ALAN D. SCHMETZER
HERBERT J. SCHMIDT, JR.
TERRY D. SCHMIDT
DANIEL B. SCHNEIDER
TED M. SCHNEIDER
FRANK J. SCHREY, III
JOHN R. SCHUBERT
HEINRICH SCHULZE
ROBERT R. SCOFIELD
CLARENCE A. SEABRIGHT
HAROLD J. SEILING
STEVE SHAPOFF
JACK D. SHEETS
BERNARD F. SHELLEY
DR. DAMON C. SHELTON
SGT. DAVID R. SHELTON
RALPH E. SHOPE
JAMES C. SHUTT
J. ALLAN SIMMONS
DAVID B. SINGER
A. H. SMALENBACH
CLAUDE R. SMITH
JACK L. SMITH
SMITH-GRIEVES PRINTING CO.
DR. LEONARD STAFF, JR.
LT. CDR. ALLEN J. STANDISH
DAVID G. STANKOW
WILLIAM K. STANKLOFF
EDWARD H. STECH
JERRY J. STELMACH
ARTHUR C. STICKNEY
WARREN STOOKEY
PATRICK H. STOVER
N. C. STRABER
BARTLETT STRAYHORN
GARY E. STRONG
THOMAS SUKALAC
GEORGE SUTTON
ARTHUR H. SWENSON
JOHN H. THOMAS
LEE E. THOMAS, SR.
WILLIAM B. THIGPEN
WALTER B. TIMBERLAKE, JR.
RICHARD L. TOMBAUGH
WEBSTER B. TRAMMELL, JR.
H. J. TRUBITT
RONALD J. TURNER
DR. ROBERT G. TUCKER
JOHN A. TUZZOLINO
A. F. UBALDI
GEORGE H. UNDERWOOD
ADOLPH J. URYNIAK, II
GARY VANDERPOL
W. BRUCE VAN DEUSEN
MICHAEL P. VARGO
REV. FRANS A. VICTORSON
WILLIAM J. VINING
REV. THOMAS B. WABER
ERIC J. WADLEIGH
CHARLES R. WAINWRIGHT
JOHN T. WEAVER, JR.
ROBERT WEAVER
STEWART H. WEENE
DAVID H. WEHMEYER
WARREN C. WEIDMAN
F. ALLAN WEINSTEIN
W. MORRIS WELCH
WARREN N. WHEELER
JAMES L. WILLIAMS
ERIK L. WILLIAMSON
DR. DELMER H. WILSON
RICHARD H. WILTBERGER
J. HUGH WISE
JOHN H. WISEMAN
GLEN R. WOLLMAN
JIM WOOD
JAMES S. YEARWOOD
EMMANUEL V. YOUNG
LT. COL. LUCIUS E. YOUNG
E. JEROME ZELLER
ANDREW ZEMAN
LANCE ZIMMERMAN
STEVE H. ZIMMERMAN
JOHN ZIZELMAN

APO BROTHERS IN SERVICE

ORDER OF THE ARROW • PHILMONT • KNIGHTS OF DUNAMIS

Alpha Phi Omega Brothers contributed leadership and support to three important Scout activities during the summer of 1971.

ORDER OF THE ARROW

Brothers from more than 40 chapters of Alpha Phi Omega were represented at the National OA Conference held at the University of Illinois this summer. Alpha Alpha Chapter, University of Illinois, together with Jim Donnalley of the National staff, manned an APO display and information center for Arrowmen who will be attending college this fall.

During the five-day conference, an informal reception was held with more than 300 Brothers and prospective members in attendance. The highlights at the reception were welcoming addresses by Sidney B. North, Past National APO Secretary, and Life member of the Board; and Paul Pruitt, National Chief, Order of the Arrow, Brother in Xi Nu Chapter, Texas Wesleyan.

Not all of the Alpha Phi Omega members at the Order of the Arrow Conference could be assembled for a photograph, but Brothers from 40 chapters did stand long enough for a group photograph.



Dr. E. Urner Goodman, holding program, founder of the O of A and a member of APO, posed for the above photo with some APO leaders present. Left to right: Jim Donnalley, National APO Service Staff; John Dimit, Jr., Alpha Alpha Service Crew, University of Illinois; Paul Pruitt, National Chief, Order of the Arrow and Brother in Xi Nu Chapter, Texas Wesleyan; Dr. Goodman, Don Burn, Alpha Alpha Service Crew; Sidney B. North, Past National APO Secretary and Life Member of the National Board of Directors; Ron Berman, Alpha Alpha Service Crew; David J. Boshea, National Secretary, Order of the Arrow and Brother of Xi Xi Chapter, Fordham University.

Brothers at the OA Conference included: Jim Henry, Beta; Philip Schiesswoll, Gamma; Harlan Gilmore, Epsilon; David Putnam, Rho; Sidney B. North, National Board, Pi; Ronald Harrell and Doug Lumb, Phi; Ron Berman, Don Burn, A. B. Malk, John Dimit and Tim Garmager, Alpha Alpha; J. Houston Costolo, Alpha Beta; John Forrest, Alpha Chi; Paul Koprucki, Beta Beta; Jim Avery and Larry E. Hampton, Beta Mu; Mike Childers and Frank McClenny, Delta Omega; Donald Purvis, Epsilon Iota; Charles Levan, Epsilon Epsilon; Steven Guy, Zeta Delta; Bud Vokoun and Tom Giles, Eta Lambda; Kenneth Majka, Theta Tau; Tom Pawlowski, Theta Pi; Michael Nathan, Lambda Mu; Jim Donnalley, National Staff, Lambda Iota; Fred Fraley and Harlan Penny, Lambda Tau; Ken Davis, Mu Mu; Phil Sharrock, Nu Gamma; Kenneth Hayman, Nu Sigma; Ernest W. Mueller and Rusty Walker, Nu Omega; Paul Pruitt, National OA Chief, Xi Nu; Bob Widing and Mark Johansen, Sigma Sigma; Carl Jensen, Tau Omega; Bill Kline, Tau Epsilon; Mark Stoddard, Phi Xi; Wayne Durden and Dennis Lennon, Chi Theta; Mike Roberts, Chi Kappa, and Robert Smolen, Chi Sigma.

KNIGHTS OF DUNAMIS

This fine organization of Eagle Scouts held its Conference in late August at West Point. Sessions were held in the Hotel Thayer. Dr. Lester R. Steig, K of D President, a distinguished Past National President of Alpha Phi Omega, presided. Alden Barber, Chief Scout Executive and former K of D Commander, a Brother in APO, delivered the opening address and Joseph Scanlon, APO's Executive Director, the closing one. Howard Patton, distinguished Scouter and APO Chairman Emeritus from New Jersey, directed training sessions.

Dr. James J. Cochran of New Jersey and California was elected by unanimous vote to succeed Dr. Steig. It will be his responsibility to complete the negotiations merging the K of D into a projected National Association of Eagle Scouts. The merger plan will be presented to the National Council, BSA, at its meeting next May.



APO Brothers attending the K of D West Point conference pictured above are, left to right, seated, Arthur Stalks, New K of D Commander; Dr. L. R. Steig; Jim Mull, Vice Commander. Standing, left to right, Joseph Scanlon, Michael Strother, Alpha Gamma; Jim Grebl, Alpha Kappa; Howard Patton, J. Portoghese, Eta Psi; Larry Blumberg, Alpha Beta; John H. Russell, Zeta Psi; Larry Johnson, Epsilon Mu; and Bob Amick, Gamma Theta.

PHILMONT STAFF

More than 60 APO men served on the Philmont National Scout Reservation staff. The most famous of all Scout Ranches, located near Cimarron, N. M., is one of the outstanding youth centers in America. We are delighted that once again APO could be of Service to Scouts and leaders at Philmont.

Annually Philmont invites interested and qualified APO men to apply his leadership positions at the ranch. The experience is one much sought after and valued.

Give Earth A Chance

By Roger Liebner

Past President, Lambda Phi
Eastern Michigan University

A new battle ground is now forming on America's own home frontier; the first potential "war" of large scale on American soil since the Civil War. The battle I refer to is cleaning up and permanently correcting our polluted environment.

The answer to the problem is clearly a simple one. Money. With money, technology can develop corrective devices for industries and machines to stop air and water pollution. Money can do many things but it must have people to direct and apply its use. The people of America do not seem to have the money needed for correction of pollution and will not have the money until they are made aware of the pollution problem.

The "people" I speak of are representatives of the ever increasing Gross National Product that is told to progress, progress, progress. Economists say we must increase the economy in order to overcome a recession. The ecologist speaks in broader terms. The ecologist predicts that a recession of life will result from the increase of the GNP, a recession America may never be able to recover from.

Alpha Phi Omega on a national scale should and could organize activities on each campus, in communities and secondary schools, informing people about the specific problems in each area.

A Phi O on the college level

(Continued on page 15)

UMOC — Here's How

By Bill Bangerter, Phi Chi, Missouri Western

Missouri Western College, St. Joseph, Mo., chartered Phi Chi Chapter in the spring of 1970. One of the first things the members did was to survey the campus situation to find out what might be the best service to the student body. We found a felt need for an APO Student Loan Fund. This would attract matching federal funds for any initial monies raised on campus. The advisors agreed and the college authorities approved.

A study of APO projects to raise funds for worthy causes showed that the Ugly Man on Campus Contest was by far the most successful. Epsilon Mu at the University of Maryland had raised \$33,000. Other chapters achieving outstanding results included: Eta, Northern Illinois University; Gamma Gamma, University of California—Berkeley; Iota Alpha, University of Tennessee; Mu Nu, Western Illinois University, and Gamma Iota, Brooklyn College.

Our net result was modest. We netted \$783 for the scholarship fund on a commuter campus with an enrollment of about 3,000 students. But everyone concerned was happy with the result and with the Campus Carnival related to it.

I have been asked to outline how we did it, the steps we took and the procedures followed. We hope this will be helpful to other campuses. We found getting this information was difficult so we had to work up our own procedures, for the most part.

Public relations proved to be our first task. Student organization leaders had to be consulted, as well as college personnel, so we first drafted a general information statement and distributed it to them, as follows:

14

PURPOSE:

The purpose of the Ugly Man on Campus Carnival and Contest is to establish and obtain money for the Alpha Phi Omega Student Loan Fund.

WHERE THE MONEY GOES:

The loan fund is for any student at Missouri Western College who applies for and qualifies for a loan. This loan fund is for *ALL* students, including veterans. The fund is a combination of donated money and government funds. The donated money is the

money raised by the UMOC. The loan fund is administered directly by the college.

Our next step was to enlist the support of Student Organizations. We decided the best way on our Campus to do this was to hold UMOC in connection with a Campus Carnival. This proved to be ideal for the purpose.

Step three for us was mostly essential paper work. This included determining how many committees would be needed and what their duties would be, setting down the rules to govern the UMOC contest, drafting application forms for UMOC entrants and also for carnival booths. Without this preliminary work chaos and misunderstanding would have resulted. It isn't easy but it does pay dividends.

Tied in to the above was careful consideration of the wording of an Awards Information statement. The paragraph headings in such a statement will vary from campus to campus. In our case they covered the following:

Awards will be given for:
The booth judging team will consist of:
Booths will be judged on:
Best publicity signs and materials:
Best campaign judged on:
Most money donated:
UMOC to be chosen by:
UMOC dance to be sponsored by:
Awards to be announced at the dance.

The Student Government Association sponsored the dance. The UMOC winner was the contestant who received the largest number of votes cast.

We gave major consideration to the selection of the best available students to head the management committees on awards, carnival, UMOC contest, publicity and tickets. Ken Paden was selected for general chairman. He was great. Terry Parnell, founding chapter president, became the UMOC consultant. He proved more than adequate. Steve Long, as chapter president, carried a heavy load effectively.

We furnished our committees with a date to remember list to keep them on the track. The compilation of this enabled us to choose the best dates to avoid the most conflicts with other organizations.

Phi Chi was strengthened by this project. It gave

Alpha Beta Honors Dr. Ascah

Dr. Ralph G. Ascah, associate professor of chemistry and pre-medical advisor at The Pennsylvania State University, has received the 1971 Distinguished Service Award of the Penn State



DISTINGUISHED SERVICE AWARD for 1971, consisting of a plaque and a certificate, awarded him by the Penn State Chapter of Alpha Phi Omega, is admired by Dr. Ralph G. Ascah, associate professor of chemistry at The Pennsylvania State University. Looking on are Dennis Roncoroni, center, Penn State June graduate and immediate past president of the Penn State Chapter; and Stephen Hayden, physics Ph.D. candidate and chairman of the Central Pennsylvania Section of Alpha Phi Omega.

UMOC . . .

us a unified purpose and an endeavor we found to our liking. Lots of work, but great satisfaction in knowing the loan funds would enable many to stay in college on a campus where most men must do outside work to earn their degree.

The chapter has been asked to keep available a set of the forms it used and the procedures it drafted for the UMOC contest and carnival. We will be glad to mail these to any chapter interested.

We'll provide the materials, if you will send fifty cents to cover postage and packaging. Write to Phi Chi Chapter, c/o Bill Bangerter, 2512 S. 18th Street, St. Joseph, Mo. 64503.

(Alpha Beta) Chapter of Alpha Phi Omega, national service fraternity.

The award, which is given each year to a member of the University faculty or staff who has rendered outstanding service to the student body, was presented to Dr. Ascah at the organization's recent spring banquet.

The award consists of a framed certificate which the recipient keeps and a plaque which is passed on at the end of the year to the next awardee. Names of the recipients are engraved on the plaque.

Dr. Ascah has served as chairman of the local Alpha Phi Omega Chapter's advisory committee for about 15 years. A member of the Penn State faculty since 1947, he received his B.Sc. degree from McGill University and his Ph.D. from New York University. He also serves as advisor to the Penn State Chapter of Alpha Epsilon Delta, pre-medical honor society.

YEAR OF OPPORTUNITIES—

(Continued from page 10)

college students to become involved in something that counts. The Sectional Chairmen met together in Los Angeles and Seattle before school started to help to guide our approach. But the success with which our opportunities are fulfilled depends upon the Chapters, and we know it!

Already in the Pacific Northwest, individuals have made personal contacts and laid the groundwork for new or re-activated Chapters at ten colleges. In the rest of the Region, plans have been started for Sectional Conferences, active participation in the National Task Force program, and an increased emphasis on offering Alpha Phi Omega's unique style of pragmatic idealism to others.

Last year was only a beginning—nothing less and nothing more. But, watch us this year!

GIVE EARTH A CHANCE—

(Continued from page 13)

could do many things. To mention a few:

- Establish an information center for local groups who need factual and research support.
- Assist high schools and elementary schools with informative programs.
- Organize participatory debates and speaker discussions.
- Distribute buttons, bumper stickers, and posters.
- Schedule conservationists and environmental experts to speak at civic groups and social clubs.

A Phi O has the ability to organize programs to develop public awareness.

If any chapter would like to obtain materials that are at our disposal write me at Box 182 McKenny Union, Eastern Michigan University, Ypsilanti, Mich. 48197.



We Welcomed The Most New Brothers in '70-'71



The great strength and value of Alpha Phi Omega lies in the gift of unselfish service by each brother to those in need on his campus and in his community. It is our responsibility to further extend our helping hand and enable as many as possible to enjoy the benefits of our fraternity. We pause to honor those chapters which recorded the largest number of new brothers last year. Congratulations to them for this outstanding contribution to a growing fraternity.

Douglas M. Harris
National Extension Chairman

10,000-PLUS STUDENTS

Beta Sigma	<i>Texas Tech University</i>
Alpha Beta	<i>Penn State University</i>
Alpha Rho	<i>University Texas—Austin</i>
Zeta Delta	<i>Miami University—Ohio</i>
Theta	<i>University Virginia</i>
Delta Omega	<i>University Houston—Texas</i>
Rho	<i>U. North Carolina—Chapel Hill</i>
Gamma	<i>Cornell University—N. Y.</i>
Alpha Delta	<i>San Diego State—Cal.</i>
Epsilon Beta	<i>Central Michigan</i>
Alpha Alpha	<i>University Illinois</i>
Delta	<i>Auburn University—Alabama</i>
Gamma Omicron	<i>Queens College—N. Y.</i>

5,000 TO 10,000 STUDENTS

Theta Rho	<i>Sam Houston State—Texas</i>
Beta Omicron	<i>University Missouri—Rolla</i>
Epsilon	<i>Northeast Missouri State</i>
Gamma Lambda	<i>Clemson University—S. C.</i>
Beta Mu	<i>Southwest Missouri State</i>
Xi Beta	<i>Kearney State—Nebraska</i>
Beta Delta	<i>East Texas State</i>
Nu Sigma	<i>Stephen F. Austin—Texas</i>
Nu Mu	<i>U. Minnesota—Duluth</i>
Tau Epsilon	<i>Tennessee Tech.</i>
Alpha Chi	<i>M. I. T.</i>
Sigma Epsilon	<i>El Centro J. C.—Texas</i>
Zeta Alpha	<i>Bradley University—Illinois</i>

2,000 TO 5,000 STUDENTS

Gamma Chi	<i>Samford University—Alabama</i>
Phi Upsilon	<i>Amarillo College—Texas</i>
Pi Zeta	<i>Tuskegee Institute—Alabama</i>
Phi Lambda	<i>N. Virginia Community College</i>
Nu	<i>Upsala College—New Jersey</i>
Tau Omega	<i>Ocean County College—N. J.</i>
Chi Beta	<i>Gloucester County College—N. J.</i>
Beta Upsilon	<i>Northwest Missouri State</i>
Tau Psi	<i>Middlesex County College—N. J.</i>
Sigma Pi	<i>Prairie View A & M—Texas</i>
Zeta Gamma	<i>Valparaiso University—Ind.</i>
Lambda Upsilon	<i>Ursinus College—Pa.</i>
Tau Omicron	<i>Purdue—Indianapolis</i>

LESS THAN 2,000 STUDENTS

Theta Eta	<i>K. C. Col. of Osteopathic Medicine</i>
Tau Phi	<i>Wingate College—N. C.</i>
Tau Sigma	<i>Brandywine J. C.—Del.</i>
Theta Xi	<i>Parks College of St. Louis U.</i>
Pi Phi	<i>Union J. C.—N. J.</i>
Sigma Theta	<i>St. Mary's College—Minn.</i>
Epsilon Epsilon	<i>Missouri Valley College</i>
Phi Gamma	<i>Texas Lutheran College</i>
Phi Beta	<i>Spartanburg J. C.—S. C.</i>
Alpha Omega	<i>Kirksville Col. of Osteop. Medicine</i>
Omicron Epsilon	<i>Union College—Ky.</i>
Omicron Omicron	<i>Pfeiffer College—N. C.</i>
Sigma Eta	<i>Villanova U.—Pa.</i>