



# Torch and Trefoil



JANUARY  
1958



## TORCH and TREFOIL

Volume 33, No. 1  
JANUARY, 1958

Issued regularly eight times a year, monthly  
October through May.  
Subscription price \$1.00 a year

Entered as second class matter February 5,  
1938, at the post office at Kansas City, Mo.,  
under act of March 3, 1879. Office of publica-  
tion, 419 Columbia Bank Bldg., Kansas City,  
Missouri.

Printed by

Smith-Grievess Company, Printers & Lithographers  
Kansas City, Missouri

### Honorary Officers

K. K. Bechtel . . . San Francisco, California  
*Honorary National President*  
John M. Schiff . . . New York, New York  
*Honorary National Vice President*

### National Officers of Alpha Phi Omega

M. R. Disborough . . . Louisville, Kentucky  
*National President*  
William S. Roth . . . Raleigh, North Carolina  
*National First Vice President*  
Irwin H. Gerst . . . Hawthorne, California  
*National Second Vice President*  
E. Ross Forman . . . Philadelphia, Pennsylvania  
*National Third Vice President*  
Joseph Scanlon . . . Yakima, Washington  
*National Treasurer*  
Robert L. Slater, Jr. . . . Chicago, Illinois  
*National Legal Counselor*  
A. G. Spizzirri . . . Kansas City, Missouri  
*National Editor*  
Sidney B. North . . . Kansas City, Missouri  
*National Executive Secretary*

### Past National Presidents

Frank R. Horton . . . Bangor, Pennsylvania  
Dr. H. Roe Bartle . . . Kansas City, Missouri  
Dean Arno Nowotny . . . Austin, Texas  
Prof. Daniel Den Uyl . . . West Lafayette, Ind.

### National Executive Board

The Officers, Past National Presidents,  
and

Manfred O. Awe . . . Minneapolis, Minn.  
Elmaar H. Bakken . . . New Brunswick, N. J.  
Prof. Harry C. Barnett . . . East Lansing, Mich.  
Dr. Glenn R. Barr . . . Oxford, Ohio  
Dr. R. H. Bolyard . . . Lafayette, Louisiana  
R. J. Bradshaw, Jr. . . . Chattanooga, Tenn.  
George F. Cahill . . . New York, N. Y.  
C. J. Carlson . . . Riverside, California  
Benjamin F. Fay . . . Philadelphia, Pa.  
Dr. Robert G. Gordon . . . Los Angeles, Calif.  
Robert J. Hilliard . . . Philadelphia, Pa.  
Dr. Lawrence L. Hirsch . . . Chicago, Ill.  
Dean Lewis N. Jones . . . Lubbock, Texas  
Stanley Livingston . . . Ruleville, Mississippi  
Thornton M. Long . . . Ocala, Florida  
Dr. Henry Miller . . . Huntington Station, N. Y.  
Rev. Robert J. Payne . . . Cos Cob, Conn.  
Dr. H. F. Pote . . . La Jolla, California  
Prof. Kent D. Shaffer . . . Pittsburgh, Pa.  
James W. Thomas . . . Arcadia, California  
Delmer H. Wilson . . . New Brunswick, N. J.  
Dr. Ray O. Wyland . . . Tujunga, California

### National Publications Committee

A. G. Spizzirri, *Chairman*

Rev. Robert J. Payne Roy F. Pleis  
Stephen J. Horvath Robert R. Weber



Boy Scout Week marks the 48th Anniversary of the Boy Scouts of America. More than 4½ million boys and adult leaders throughout the nation celebrate this anniversary by launching a nation-wide safety campaign under the slogan of "Live for Tomorrow." Since 1910, more than 27 million boys and men have been affiliated with Scouting. Members of Alpha Phi Omega are proud of their Scouting background. Our fraternity extends hearty congratulations to the Boy Scouts of America upon its outstanding record of service to youth for the past 48 years.

### ON OUR COVER

At ceremonies of Mu Zeta Chapter at San Francisco State College, Kenneth K. Bechtel, President of the National Council of the Boy Scouts of America, was inducted as an honorary member. At the banquet following the ritual, our cover picture shows Brother Bechtel's enthusiasm in receiving his Life Membership card as presented by Brother C. J. Carlson, member of our National Executive Board. The entire chapter gave hearty applause. Shown at right is Josiah Beeman, V, then First Vice President of the chapter. The Torch and Trefoil extends sincere thanks to Scouting's President for his fine interest in Alpha Phi Omega.





## FOOD FOR NEEDY

In the past two months, Alpha Phi Omega Chapters have sent more than 11½ tons of food overseas through CARE, which will provide 18,000 meals with 12,000 glasses of milk, 12,000 bowls of cornmeal and 12,000 hearty cheese sandwiches. The food goes to refugees, orphans, uprooted families and needy people in Europe, South America and Asia. This is reported by the CARE office in Kansas City, to which numerous chapters have recently sent contributions.

EPISILON CHAPTER at *Northeast Missouri State College* is sponsoring an Ugly Man dance with all proceeds going to CARE. A huge CARE box is being prepared—milk, cheese, corn and flour—live contents will be shown at the dance. The theme of the dance will be "Help Send Tons of Food Overseas Through CARE." All the local newspapers, radio and television stations are helping make this dance a success.

KAPPA TAU CHAPTER at *The Citadel* is conducting an all-campus drive to raise \$1,000 for CARE.

At *Wisconsin State College* at Eau Claire, ETA LAMBDA CHAPTER has placed CARE literature in the college mail boxes of their 1,400 students.

Other chapters recently helping in the CARE program are: DELTA NU CHAPTER at *Yale University*; ALPHA GAMMA CHAPTER at *Purdue University*; ETA CHAPTER at *Northern Illinois State University*; LAMBDA KAPPA CHAPTER at *Loras College*; THETA PI CHAPTER at *Indiana Central College*; IOTA BETA CHAPTER at *Pacific Lutheran College* and THETA BETA CHAPTER at *Fenn College*.

The CARE program will continue to deliver twenty-two pound units of farm surplus commodities for each one dollar contributed. Other chapters wishing to do benefits and projects for CARE may contact the CARE office at Macy's, 1034 Main Street, Kansas City, Missouri, or your local CARE office. This is an inexpensive way to do a tremendous good turn for needy people in other nations.



## SAY, DID YOU KNOW?

—Plans are well underway for the Fifteenth National Convention of Alpha Phi Omega to be held in Austin, Texas, August 30 and 31 and September 1, 1958.

—All chapters in the Southwest Section (Texas, Oklahoma and New Mexico) are collaborating as hosts for this convention.

—Excellent speakers have been invited to participate at this convention—the finest group of prominent speakers ever to appear at an AΦΩ convention.

—Every chapter is entitled to two official voting delegates at the convention and is welcome to bring as many other delegates as can attend. The two voting delegates should be elected by your chapter before the close of the Spring term.

—There is great inspiration in meeting fellow delegates at the convention and coming in contact with national leaders who have had a great hand in forming and building our fraternity from its very beginning.

—In the 1958 edition of *World Almanac*, Alpha Phi Omega is listed on page 479. The almanac contains an extensive section on colleges and organizations, listing the colleges and universities, showing enrollment figures. It includes a roster of fraternities, sororities, professional organizations, honor societies and recognition societies.

—Our National Office endeavors to maintain the mailing list accurately so the *Torch* and *Trefoil* will be delivered safely to all members. If you know of any member of your chapter who is not receiving the magazine regularly, please send his name and address to our office.

—We invite news items and pictures for use in the remaining issues of *Torch* and *Trefoil* for this Spring term. Send your news as a means of spreading information about your projects to all other chapters. Pictures which show members and pledges in action on service work are also welcomed for use in forthcoming issues.

## *An Invitation to You . . .*

### FOURTH BIENNIAL PILGRIMAGE

to the

### BIRTHPLACE OF ALPHA PHI OMEGA

**Lafayette College, Easton, Pennsylvania,  
April 12 and 13, 1958**

All active members, advisors, honorary members and alumni are invited to participate in this pilgrimage to honor the founders of our organization. Meet Frank R. Horton, Founder and first National President. Tour the campus where Alpha Chapter carries on its program. See the building in which the first AΦΩ meeting was held. Hear national leaders addressing the assembly. Enjoy this occasion to meet members from numerous other chapters.

In announcing this pilgrimage we realize that because of long distances many chapters will not be able to be represented, but we hope all chapters which possibly can will send one or more members. Further details will be sent to all chapters by Alpha Chapter.



## Leadership Feature . . .

**THE ADVISORY COMMITTEE**

By Dean Darold L. Shutt

Chairman of Advisory Committee  
Theta Iota Chapter, University of Arizona

Why have an Advisory Committee? What good can the committee do? Whom should we approach with an invitation to join such a committee? When, where and why should they meet? How do you get rid of "dead-wood" on the committee?

Doubtlessly, every chapter Executive Committee has, at some time, been faced with one of the questions listed above, possibly with all of them. Unless the officers are aware of how valuable the Advisory Committee can be, they may resort to a practice common in the weaker chapters, that of maintaining a "paper" Advisory Committee. Three factors may be responsible for a "paper" committee: (1) the active chapter may fear too much supervision will result from a strong faculty group; (2) the inertia experienced by even the best chapter officers makes it much easier to neglect to look into the matter than be required to sell the idea both to the faculty man and the active chapter; (3) the chapter fails to realize the true function of the committee.

Let's take the questions in order: Why an Advisory Committee? Because it can be a chapter's most important contact with the institution of which it is a part. Most colleges require all student organizations to have a faculty sponsor or advisor. The administration of the college feels that every student group needs the assistance of one or more faculty men to maintain the purposes for which the organization was recognized as an integral part of the institution.

Through the Advisory Committee the continuity of the group is assured. By virtue of their faculty positions these men are in a position to render invaluable service to the chapter in securing needed, worthwhile projects. By their participation in chapter activities a measure of prestige is brought to the chapter. Especially during rush functions, the presence of several faculty men lends an air of stability and permanence to the program.



Selection of committee personnel includes several considerations. Certain faculty men are simply so pressed for time that some of the many organizations of which they are members must suffer. Others are sometimes chosen by chapters because they feel the names will add to the prestige of the fraternity. For these men an honorary membership without committee responsibilities would be advantageous to both the active chapter and the individual. It has been the experience of many chapters that a committee composed of men from a large number of departments rather than a concentration in one department works out best. Since Alpha Phi Omega spans all departmental lines, the influence of the Advisory Committee can be infinitely greater if their fields of interest are somewhat diversified. Two distinct types of faculty men seem to be able to spend a sufficient amount of time on the work. These are the younger men who have not yet attained a position in their field which makes great demands on their time. They welcome an opportunity to associate with the other more experienced professors who make up the second group. Here we refer to the Deans, Directors

or Department Heads who have by virtue of their offices been assigned assistants to share their work and responsibilities. These elder statesmen of the campus may very well be the solid core around which an outstanding committee can be organized.

The keynote to the organization of such a group lies in the proper utilization of the committee by the active chapter. Here, as in all phases of the fraternity's work, stress must be laid upon the service aspects of the program. It is hardly reasonable to expect a busy faculty man to give his time unless he can justify to himself the expenditure of that time. He must know the work he is doing is important to the success of the chapter. He must see definite results come from the action of the committee. His advice must be sincerely desired and always considered. You will note we did not say his advice must always be followed. That is the chapter's prerogative.

Proper organization and adequate publicity are prime essentials in securing maximum attendance at committee meetings. The meetings must be planned so that the matters to be discussed are covered in a one-hour period. The agenda of the meeting should be in the hands of the members at least one day before the meeting. The chairman and secretary should discuss the agenda in advance so that the time of the committee will be most profitably spent. Written notices of the meeting are a first step, but a follow-up phone call from a Dean or Director's secretary the day before the meeting insures against forgetting.

It has been the experience of several committees that attendance at a luncheon or dinner meeting is much higher than otherwise. Local conditions will dictate the advisability of this procedure, but its time saving factor may be an important consideration. As soon as practicable following the meeting, mimeographed or typewritten minutes should be sent to all members of the committee by the secretary. A

(Continued on Page 11)



## A Feature Project . . .

# Who's the UMOC?

The Ugly Man Contest continues to be one of the most popular and serviceful projects of Alpha Phi Omega. It is an excellent and painless way of raising money for a worthy cause, and it arouses wide interest on the campus.

Many chapters have conducted the Ugly Man Contest annually for many years and have developed excellent methods and procedures and have adopted specific rules to govern it. For the benefit of chapters which have not previously conducted this project, the following information is presented. The project is relatively simple to start and is easy to operate.

First, pick a good reason for con-

ducting the contest, such as the benefit of the Community Chest or the March of Dimes. Also, the contest is often used for the Red Cross drive, the Heart drive, campus beautification, youth center, and on and on goes the list of worthy recipients.

Second, check with the officials of your college administration to request approval. Explain the purpose and procedures of the contest.

Third, as in any project, plan it well within the chapter of Alpha Phi Omega. Determine the method of voting, the candidacy eligibility, publicity, awards, and the possibility of an assembly devoted to it (this is often acceptable to the administration if the

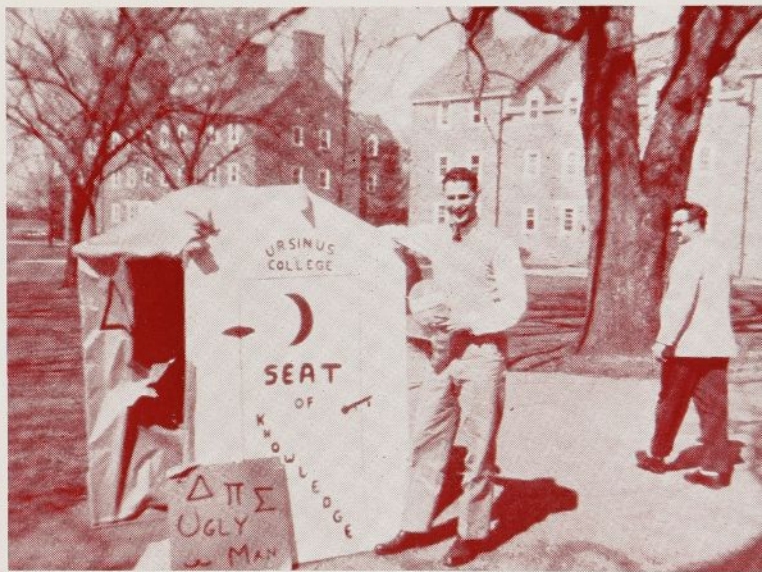
cause is of sufficient merit). Select a capable chairman who is to see that the project goes off on schedule, ends on schedule and fulfills its purpose.

Here are some suggestions:

### A. Voting

1. Select a specific time for the polls to operate and let them be operated by  $\Lambda\Phi\Omega$  members. Set a standard charge per vote (usually one cent).
2. Let the polls remain open over a period of days, charging by the vote, having no limit on the number of times an individual may vote.
3. If you possess an ingenious en-

Pictures below indicate the voting and publicity in four of the many Ugly Man Contests conducted throughout the nation. In the top left picture is shown the rush of voting in Lambda Theta Chapter's Ugly Man Contest at Columbia College. In lower left are shown the vote containers, pictures of candidates and trophies in Delta Chapter's contest at Alabama Polytechnic Institute. In upper right fun of Ugly Man Contest publicity is depicted by Lambda Upsilon Chapter at Ursinus College, and in lower right is a window display of caricatures of candidates in Beta Beta Chapter's contest at Michigan State University.





gineer he can rig an electrically operated coin vote recorder, automatically tabulating votes for a candidate as any size coin is deposited.

4. Decide at the beginning the contest termination hour the results will be made known, then stick to it.

#### B. Candidates

1. It is recommended that you allow both campus-at-large and living quarters candidates, for

### MARCH AGAINST POLIO



Kappa Chi Chapter at Creighton University and Alpha Theta Chapter at University of Omaha joined in the "Mothers' March on Polio." The chairman of the city-wide campaign in Omaha gave the chapters territories of about fifteen square blocks each to cover. The members knocked on every door in one evening's effort. Shown above are two of the members of Kappa Chi Chapter who worked on this project, Steve Kralik, Vice President, and Dick Bogard, President. This news and pictures are by Robert L. Krebsbach, Treasurer.

if exclusive to either, the danger exists of not appealing to enough varied interests on the campus.

2. It is suggested that a written application for each candidate be in your files before the contest. Only those so filed should have votes tabulated for them. A practical joker could upset a good project like this by submitting some fictitious or mythical candidate.
3. Consider the faculty! If enough informality exists, maybe this group might have candidates.
4. Allow sufficient time in advance of voting for the filing of candidates' applications.

#### C. Publicity

1. Reams could be written! Almost every project needs good publicity. Give this project plenty of publicity. Campus newspaper and radio. Convocation announcements. Bulletin board notices. Posters. Town papers and radio. Dormitory and residence notification. *Talk it up.*

#### D. Prizes

1. The Ugly Man key available through the National Office, is the most popular award. Sometimes a scroll or wall plaque is used. Also an Ugly Man mug has been developed by one of the chapters.
2. If published, make the prize well known. If not published, let no one know in advance.
3. Perhaps a college or student body official would be happy to present the award, giving official sanction and prestige to the endeavor.
4. Who pays for the prize? Sometimes the local merchants will donate; in other instances the chapter may purchase the award.

#### E. Convocation

1. An all-school assembly is ideal. However, on those campuses where these are of a religious nature, perhaps something on the order of a pep rally or show should be substituted.
2. Since the project is in itself whimsical, the program should be light, fast-moving, and funny.

#### F. Chairman

1. This is important, for the right individual performing the task of general chairmanship can make the event a howling success.
2. His qualifications.
  - a. A promoter. b. A planner. c. A doer. d. A he-whoer (he who can get others to work; also, get others steamed up).
3. Afford plenty of manpower for subcommittees, i. e., publicity, voting, filing, finance, etc.

These are but a few specific suggestions, offered in the hope that they might help you when your chapter promotes an Ugly Man Contest.

Now, here are some further suggestions, gleaned from correspondence, chapter reports, and personal observations, all of which have proved merit:

1. Seek cooperation of girls' organizations in building enthusiasm on the campus (possibly a prize being a kiss from a campus queen to the ugliest man).
2. If, for a cause such as March of Dimes or Red Cross, it should be possible to interest the local leaders of that agency, try to bring them into the event somewhere.
3. And while we're speaking of that, let's clear with the officials of the beneficiary agency, to secure their approval.
4. As to candidates among your chapter members, this is a ticklish subject. We'd say only under other sponsorship. And maybe not even then.

Keep the contest honest and the enthusiasm controlled. Ill feeling will hurt future projects. And, remember, though lots of fun, this is a service project sponsored by the men of Alpha Phi Omega who enjoy a national reputation for doing things well, with purpose and dignity. Keep it on a high plane.

#### Ugly Man Certificate

ALPHA GAMMA CHAPTER at *Purdue University* has devised an attractive certificate which can be given to the winners of Ugly Man Contests. Other chapters may obtain them by addressing Alpha Gamma Chapter, Alpha Phi Omega, Room B-80, Purdue Memorial Union, West Lafayette, Indiana. The charge is only 25c for five certificates to defray the cost of printing and postage.





### Interesting Speakers

THETA MU CHAPTER, recently reactivated at *Vanderbilt University*, has had several prominent and interesting speakers at recent meetings. Mr. Sam Hodges, district manager of Dun and Bradstreet, spoke on "Money doesn't grow on trees and what about net capital." He furnished the chapter with information about company income statements and why some businesses are able to show earnings and why others are not. He stressed hard work and the need of sound financial knowledge.

Judge Beverly Briley, Davidson County Judge and Manager, spoke on political issues in the county and emphasized the important role Scouting has played in influencing the lives of many men.

Mr. Charles E. Parish, President of the Middle Tennessee Council, Boy Scouts of America and also President of Lannom Manufacturing Company, spoke on the importance of a person in business or in any field to be able to "sell," not only his product, but himself. He asked that the college student who is interested in business not shy away from being a salesman. He brought out the fact that the great majority of executives were at one time salesmen.

Mr. E. B. Stahlman, editor and owner of the *Nashville Banner*, expressed wishes for success of this type of organization which enables college students to keep their contact with Scouting.

These speakers have not only furnished the members valuable information about their respective fields, but have also given inspiring thoughts, reports Bobby Dodge, Historian, in the first issue of the chapter newsletter.

The chapter also has fine projects underway and is doing an excellent job in carrying on the service motives of Alpha Phi Omega on the campus and in the community.

### Welcome Week

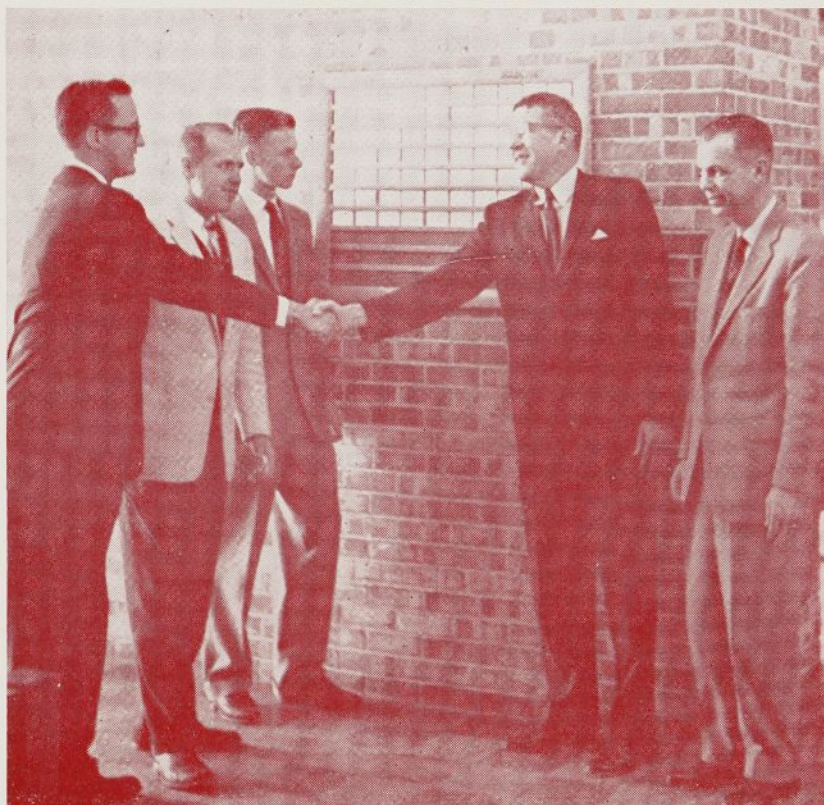
LAMBDA MU CHAPTER at *Los Angeles State College* collaborated with Phi Mu Alpha, Sigma Alpha Iota and Phrateres in sponsoring a welcome week dance at the opening of the semester. Alpha Phi Omega was in charge of the over-all planning, organization and publicity for the event. The accent was on renewing old acquaintances and making new friends among students, faculty and

alumni. This is reported in the *College Times*, Los Angeles State College.

### Christmas Seals Drive

KAPPA MU CHAPTER, *The Johns Hopkins University*, collected more than \$250.00 for the tuberculosis Association in the Christmas Seal campaign. This is reported in chapter minutes as recorded by Bernard Berne, Secretary.

### DIRECTORY OF FACULTY OFFICES



A Fall semester pledge project of Delta Pi Chapter at Trinity University is a new directory board of the faculty offices. Shown above, the board is 33 by 22 inches in size and has places for one hundred names. In the picture, left to right, are John Shute, First Vice President of Delta Pi Chapter; Stanley Erickson, President of the Baden-Powell pledge class; Rivers Singleton, Chairman of the pledge project; Dean Bruce Thomas, Dean of Trinity University; and J. Frank Ray, Business Manager of the University. The chapter also built and installed an organization bulletin board with spaces for the use of all groups on campus.



## RUSHING PROGRAM

DELTA TAU CHAPTER'S rushing program at the *University of New Mexico* begins with a smoker on an afternoon about two weeks after registration. The next afternoon the chapter holds a talent show, using mainly on-campus talent. It is at this meeting that officers tell the prospective pledges about Alpha Phi Omega.

As a supplement to the National Pledge Manual, Delta Tau Chapter recently issued a Chapter Pledge Manual. In writing this manual, William Nelson took into consideration that this publication could explain Delta Tau Chapter better than scrap books or an information sheet. Besides explaining the purposes of Alpha Phi Omega, the manual has space for all active signatures, which each pledge must secure, and also a space for the hours of service rendered by the pledge.

Traditional projects mentioned in the chapter manual are:

Freshman Orientation—Alpha Phi Omega starts the school year by helping university officials during orientation week.

Ushering at football games—Alpha Phi Omega acts as ushers at every Lobo home game. We have a front row bench reserved on the 50-yard line at these games.

Homecoming and Fiesta Luminaries—Every year during Homecoming and Fiesta, Alpha Phi Omega puts up approximately 5,000 luminaries on major university buildings.

Toy Dance — One of the biggest dances of the year is the Alpha Phi Omega Toy Dance. The toys collected from this dance are given to underprivileged children.

Ugly Man Contest — The chapter annually operates the contest to determine the Ugliest Man on Campus. This is held in coordination with the Campus Chest and all of the money derived from the contest is turned over to the chest.

Easter Egg Hunt — Each year the

chapter invites the orphanages and community centers of Albuquerque to participate in an Easter Egg Hunt. From 60 to 100 dozen eggs are dyed and hidden.

Stunt Night—This is a night sponsored by Mortar Board, with different organizations on campus putting on stunts. Alpha Phi Omega serves as judges and timers for this event.

Scout-O-Rama — This is a project which Delta Tau Chapter sponsors for the Boy Scouts and Explorers of Albuquerque. Each Scout unit is assigned a booth at the State Fair Grounds and they demonstrate some talent such as cooking, camping, etc.

The Chapter Pledge Manual also includes other general information about activities, traditions and policies and describes the method of selecting the honor pledge.

## Many Projects

Many man-hours of service have been rendered by ALPHA BETA CHAPTER in numerous projects in recent months at *The Pennsylvania State University*. These are blood drives, including setting up and taking down the equipment at both the American Legion and University sponsored drives, service at the University infirmary during the flu epidemic, repair and construction work at the local Boy Scout camp, mimeographing and clerical work in the University Chapel, assistance to sororities in the heavy work of setting up for the Mardi Gras booths, an Ugly Man contest from which the proceeds go to a worthy charity, Chapel tours held every Saturday and Sunday, assistance in a campus-wide membership campaign for the University Christian Association, tabulation of information from freshmen questionnaires, alumni registration at Homecoming and other projects. This is reported by John Hunt, Recording Secretary.

## Office Space

Through the courtesy of Dean John F. McKenzie, ZETA UPSILON CHAPTER at *Boston University* has been given quarters and office space in his office as Dean of Men. Brother McKenzie serves as a faculty advisor of the chapter and is a national Presidential Representative.

## ALPHA PHI OMEGA MEMBERS AT 199TH NATIONAL TRAINING SCHOOL FOR SCOUT EXECUTIVES



Here are members of Alpha Phi Omega who attended the 199th National Training School for Scout Executives at the Schiff Scout Reservation, Mendham, New Jersey. Seated left to right are John C. Bernson, Eta Tau Chapter, West Texas State College; Daniel Gorham, Iota Rho Chapter, Florida State University; Tom Zabec, Alpha Alpha Chapter, University of Illinois; Duane B. Thornton, Beta Pi Chapter, University of Tulsa. In back left to right are Charles F. Bramstedt, Epsilon Epsilon Chapter, Missouri Valley College; George N. Clewlow, Gamma Mu Chapter, Evansville College; Larry Vaughn and Paul E. Turner, Eta Omicron Chapter, Brigham Young University; Roy F. Stein, Eta Upsilon Chapter, Marshall College; and Phillip W. Noble, Zeta Omicron Chapter, California State Polytechnic College. These men have taken the special training course for professional service in the Boy Scouts of America. The picture is by courtesy of Daniel Gorham.



## The Meaning of Pledgeship

From the Arapout News, of ALPHA RHO CHAPTER, *University of Texas*:

When you get right down to it, the whole purpose of our open meeting is to give the visitors an insight into our fraternity and to invite them to consider pledging Alpha Phi Omega. But just what will they get involved in if they decide to pledge AΦΩ? In an attempt to reassure them about this, the Arapout reprints an old article about the "Meaning of Pledgeship":

The period of pledgeship is a period of training for active responsibility in Alpha Phi Omega. Its purpose is to help you prove your unselfish interest in participating in a program of service activities. Everything that is done by you and for you during pledgeship is intended to be constructive and to aid in the development of your appreciation for the spirit and ideals of the fraternity.

Your activity as a pledge is extremely important. A spirit of willingness and cooperation is needed.

All pledge duties bear a definite relationship to your chapter and to the national fraternity. Pledges in Alpha Phi Omega are not required to perform personal services for active members and there is no hazing or informal initiation. The entire pledging system in this fraternity is designed to develop conscientious, enthusiastic active members who will carry on the traditions, ideals and service of the fraternity in the years ahead.

## Tenth Anniversary

This semester, ZETA ALPHA CHAPTER at *Bradley University* celebrates its tenth anniversary. The chapter is well regarded on campus for its outstanding service. Some of the projects include publishing a student directory, Bradley scholarship fund, guides for special tours on the campus, such as Mothers Day and Fathers Day, maintaining information booths, sponsoring an Easter egg hunt for orphanages, assisting at campus conferences, collection of canned goods for the needy and the decoration of Christmas trees on the campus, ushering, operating a traffic survey for the University and for the Traffic Engineering Department of Peoria, caring for bulletin boards and assisting in community and Boy Scout work. This is reported by Herman Saettler, Historian.

## MANY SMALL CANDLES

Address to Prospective Members of  
Alpha Beta Chapter at The Pennsylvania State University

By Captain Gordon D. Brigham  
Faculty Advisor



Captain Brigham

to develop friendship and promote service to humanity."

Alpha Phi Omega, founded in 1925, now has more than 250 chapters whose members are devoted to service to the brotherhood of mankind. There are four major fields of this service: to the student body and faculty, to youth and community, to members of the fraternity and to the nation as participating citizens. Last year, for example, members of this chapter rendered service by conducting campus tours for new students, assisting in obtaining contributions to the Campus Chest drive, collecting \$1,500.00 and 6 tons of clothing for Hungarian relief, assisting in the Heart Fund campaign, sponsoring a hypnotic show which was written up in LIFE magazine and which made \$314.00 profit for the University Scholarship Fund, conducting the Ugly Man contest, which raised several hundred dollars for campus projects, assisting the University in protecting newly seeded areas and by working in a number of other projects. Our chapter celebrated its 25th anniversary last May, when President Walker was initiated into the fraternity.

This, then, is what we mean when we speak with pride of being a service fraternity, and we hope you will want to work with us in accomplishing our mission of service. Your active participation, together with other college men and women, in projects designed to serve others, will enrich your own lives in many ways and make your AΦΩ experiences in leadership and service among the finest you'll have at Penn State.

Confucius once said, "It's better to light one small candle than to curse the darkness." For thirty-two years, Alpha Phi Omega has been lighting many small candles of service—candles which have served to brighten and strengthen the American way of life.

## Campus Editorial

### ALWAYS AROUND OR NEARBY

Whenever there's a need for something to be done, it seems that Alpha Phi Omega is always around, at the least always nearby.

The latest example: Collecting used and new clothing for Delta Theta Sigma members who lost many personal belongings in the fire which gutted the inside of their house. With the aid of radio station WMAJ, the service fraternity collected more than enough clothing just twelve hours after the first call went out.

The above editorial in *The Daily Collegian* of Pennsylvania State University is a fine tribute to the alert service of Alpha Beta Chapter. John W. Hunt served as Chairman of the drive.



# Leadership! Friendship! Service!

By Richard E. Mastrangelo

Service Vice President, Zeta Upsilon Chapter  
Boston University

The initiation of a new pledge class into Alpha Phi Omega brotherhood marks the end of a semi-annual phase of activity which Zeta Upsilon chapter, like all other chapters, passes through. It is natural that you pause for a few brief moments of reminiscence before going on to a new, more improved chapter program.

In your own mind, you will try to recollect the happenings and events which make this semester unique—which will make this semester stay in your mind, and in your heart. You think of the chapter projects. Of the brothers' projects. Of the pledge program. Of the joint brother-pledge activities. You run swiftly back to your minds image of each event. Let's see. What will you remember most?

Will it be the friendship and service enjoyed while decorating the Boston Arena for the annual Boston University-Boston College Football Rally? Here, brothers and pledges labored to transform a municipal auditorium into the scene of a college fun-fest. While this magic transformation took place, some of your brothers were checking last minute preparations for the Bounce BC Float Parade, which preceded the rally. Mustn't forget ushering the rally or the escorting of the Miss Touchdown contest finalists either. You spent wonderful hours on this successful project.

You begin to feel that no project could oust the rally from top post. Then you recall some of the others—each vying for top spot of Most Likely

To Be Remembered. Who will ever be able to forget the stifled chuckles at seeing Faculty Pledge Randy Weeks (Executive Secretary of the Boston University General Alumni Association) being prodded on in the performance of a difficult task by University Dean of Men, Brother John F. McKenzie and Advisory Committee Chairman Ed Bryant? Pledge Weeks and several of his fellow neophytes were busily engaged in the cleaning and polishing of a bronze cast of the University Seal imbedded in the middle of Marsh Chapel Plaza, center of the University. Of course, several other brothers were on hand to lend dignity to his memorable occasion.

For the first time in the four-year history of International Students' Day, held by the University on United Nations' Day, the United States and Canada were represented. ISD is a collection of booths and exhibits of the various countries represented in the Boston University student body. Zeta Upsilon Chapter was proud to be asked to sponsor the United States and Canadian booths. At the International Ball, that evening, the Chapter gave scholarship awards to foreign students. The scholarships are given annually from UMOC funds.

Wonder which was really most im-

portant: sponsoring the booths? Supervising the hall? The scholarships? Helping to set up all the booths and to dismantle too? Remember, too, that the pledges did much to help insure the success of the event. Along with helping out the brothers, they helped publicize ISD. Zeta Upsilon pledges washed faculty and student windshields, leaving on each, a card. The card read: "Washed so that you may see your way to International Students Day . . ." and gave all necessary data for ISD. Pledges also ushered—assisted, of course, by one or two brothers.

The word "ushered" recalls several other projects which could easily take top slot in our mythical contest. Let's see. There was the University Fall Convocation; the pledges at Frosh Parents' Day. Could you call the work done at High School Day ushering? The real word is "hosts." Each brother took a group of eight or ten high school students, from all over the Eastern seaboard, on tour of the Campus. After the tours, the students had lunch in the student union and went to the BU-UCONN Football game. The University picked up the tab.

At the beginning of the semester we hosted the traditional tours and

## CLEANING THE SEAL

Boston University's seal is shined by pledges of Zeta Upsilon Chapter. Kneeling left to right are Frank Sherman, Les White, Ranny Weeks, honorary pledge and Secretary of the Boston University General Alumni Association; Tom Reese and Stu Carlisle. Officers and members who gathered for the occasion are, standing left to right, Dean John F. McKenzie, Dean of Men and Presidential Representative; Jason Hoffman; Bob Costa, Past President; Dick Norton; Dick Mastrangelo; Bill Holder, President; and Edward C. Bryant, Chairman of the Advisory Committee. The picture is by courtesy of Boston University Photo Service.





tea dance for transfer students seeing their new campus for the first time. This project, repeated each semester, has become a Chapter favorite.

A brief look at pledge class activities shows that the pledges have really been busy. In between helping on Brothers' projects and working on those assigned by the pledgemaster, they planned a couple of surprises for their big brothers. Remember the fabulous coffee hour they threw? How could you forget — hostesses were Kappa Omega members! Then came the best event of all. The brothers were invited to be the guests of the pledge class for dinner. This was the second annual Big Brother-Little Brother dinner, held at the Faculty Club. Little did you know that by accepting the invitation to dine you accepted the challenge for a skit competition! With all their activities and responsibilities they also found time to canvass a local area for United Fund, to help out the BU News Bureau, the Alumni Office, or the University Development Campaign. Just can't pass it off as the enthusiasm of youth. These pledges worked hard to show that they wanted to become brothers of AΦΩ.

Now the events of the season are nearly ended. Here you are at the initiation banquet. There remains but one major project before the holidays and the following lull before the storm of semester finals. This is the appearance—for the first time in a non-AΦΩ public—of the Chapter Glee Club. Sure! They sang at tonight's banquet; but this is different. This is in public! The happy choraleers will lead campus personnel in singing Christmas carols and Channuka songs at the annual University Christmas-Channuka Sing at Marsh Chapel.

Enough of this daydreaming. You have visited enough in the past. Return to the present. Turn your efforts toward a new semester and a new brotherhood — a combination of the new, bristling with ideas, with the old know-how to transform to deeds. Turn your efforts toward a new, improved program of *Leadership, Friendship and Service*—in the Alpha Phi Omega tradition.

### Coke Profits

ALPHA OMEGA CHAPTER at *Kirksville College of Osteopathy and Surgery* earns money from coke machines on campus and donates the profits to numerous worthwhile projects.

*Let's Go*

to the

### NATIONAL CONVENTION

AUSTIN, TEXAS

August 30-31 and September 1  
1958

### THE ADVISORY COMMITTEE

(Continued from Page 4)

listing of the members present and those absent in the minutes sometimes tends to induce men to keep their names off the absent list.

For most Advisory Committees a monthly one-hour meeting will suffice; however, if committee personnel are assigned as individual advisors to committees of the active chapter, the advisors will need to spend at least one additional hour monthly with the committees.

Meetings of the Advisory Committee seem to flourish best if coffee or food is available. Hence, the faculty dining room or a faculty lounge adjacent to a snack bar are excellent choices. It is the duty of the faculty committee to give guidance and counsel in all phases of chapter activity; they can likewise set them an example of good fellowship in their meetings. Being a member of the committee should be enjoyable, not a chore. Pruning the "deadwood" should be the responsibility of the Chairman of the committee. It is most difficult for a student, no matter how diplomatic, to ask a faculty member to resign or take an honorary status. In most cases the member who has lost interest or taken upon himself too many responsibilities will eliminate himself, simply by non-attendance. After a reasonable length of time has elapsed, a call from the chairman suggesting an honorary status is usually all that is required.

The president of the active chapter should be present at all meetings of the Advisory Committee. It should be his responsibility to see that recommendations of the committee are carried back to the active chapter. He should present to the secretary any items he has for discussion several days preceding the meeting. If possible, active meetings should be held

the day following the meeting of the Advisory Committee so that the chapter president will better recall the discussion which led the advisors to make any given recommendation.

In accepting membership on the Advisory Committee the faculty man or Scouter should realize that he has accepted a great responsibility. He must keep foremost in his mind the ideals of the fraternity. He should be willing to say, with the active chapter officers, "During my term in office I will make Alpha Phi Omega my principal extracurricular activity." He must be constantly on the alert for opportunities for the fraternity to be of service to the campus or community. When the roll of active advisors is called, he should not fail to be among those present. His only recompense will be the satisfaction he will gain for the service given, but he will rest assured that his efforts are appreciated by the finest group of college men ever assembled.

Do You Wear an  
Alpha Phi Omega Pin or Key?



If you have not yet purchased a pin or key, get one as soon as convenient. You will enjoy wearing APO insignia. Above is pictured the standard pearl center key which costs \$16.25, plus ten per cent federal tax and any state and city tax which applies in your locality. Other qualities of pins and keys are priced from \$2.75 to \$28.00.

An illustrated list is available upon request to our National Office. Also, if your chapter treasurer does not have Balfour order blanks on hand, a supply can be obtained by writing to our office.



# *Camp Time Is Just Around the Corner*

## **STAFF POSITIONS AVAILABLE IN SUMMER BOY SCOUT CAMPS**

Many local councils of the Boy Scouts of America are seeking applicants for staff positions in their summer camps. The jobs available at this time should be filled by the end of May. If you are interested, consult your local Boy Scout office in your home town or college town. Applications may also be secured from the National Council, Boy Scouts of America, New Brunswick, New Jersey.

Several hundred college men and teachers will have the opportunity to serve on the staffs of summer camps throughout the United States.

Experience in camping as a Scout or Scout Leader is preferred; however, special training in administration, accounting, aquatics, and medical work, or some program specialization may qualify a man without camping background for a specialized position.

Period of employment in Scout camps varies between four and nine weeks, including a pre-camp training period.

There are also a limited number of highly desirable positions open for college men of strong Scouting background at Philmont Scout Ranch, Cimarron, New Mexico, and at Schiff Scout Reservation, Mendham, New Jersey. These jobs would be of particular interest to men who are planning to pursue a professional career in Scouting.

If you are interested in applying for a summer camp job, ask your council office for an application, or write to Division of Personnel, Boy Scouts of America, New Brunswick, New Jersey.

## ***BULLETIN BOARD***

### **PLEDGE REGISTRATIONS**

Applications for new pledges should be sent to the National Office promptly after each pledging ceremony. By action of the National Convention, pledge applications should be mailed within three days after the ceremony is held. Under this plan it is necessary that each pledge have his application filled out and his pledge fee paid before being permitted to pass through the pledging ceremony. It is important that every chapter register its pledges promptly. A letter of recognition is sent to each pledge when his application arrives in the office.

### **SPRING DEDICATION**

It is recommended that again each chapter dedicate its Spring 1958 Pledge Class in honor of a local leader whom the members deem merits this recognition.

In your chapter there is undoubtedly someone whose service and leadership and devotion stands out above all others for the past year . . . some advisor, college official, Scouter, or other leader who has given particularly outstanding service in Alpha Phi Omega.

This dedication offers opportunity to say "Thanks" in a big way for exceptionally fine service.