



# Torch and Trefoil



JANUARY  
1959

## TORCH and TREFOIL

Volume 34, No. 1

January, 1959

Office of Publication  
419 Columbia Bank Building  
921 Walnut Street  
Kansas City 6, Missouri

Issued regularly eight times a year, monthly

October through May

Subscription price \$1.00 a year

Second Class Postage Paid  
at Kansas City, Missouri

Printed by

Smith-Grievess Company, Printers & Lithographers  
Kansas City, Missouri

### Honorary Officers

K. K. Bechtel... San Francisco, California  
*Honorary National President*

John M. Schiff... New York, New York  
*Honorary National Vice President*

### National Officers of Alpha Phi Omega

William S. Roth... Raleigh, N. C.  
*National President*

Dr. Robert G. Gordon... Los Angeles, Calif.  
*National First Vice President*

Dr. Henry Miller... Huntington Station, N. Y.  
*National Second Vice President*

Manfred O. Aws, Jr... Minneapolis, Minn.  
*National Third Vice President*

A. G. Spizzirri... Kansas City, Missouri  
*National Treasurer*

Sidney B. North... Kansas City, Missouri  
*Executive Secretary and Editor*

### National Executive Board The Officers and

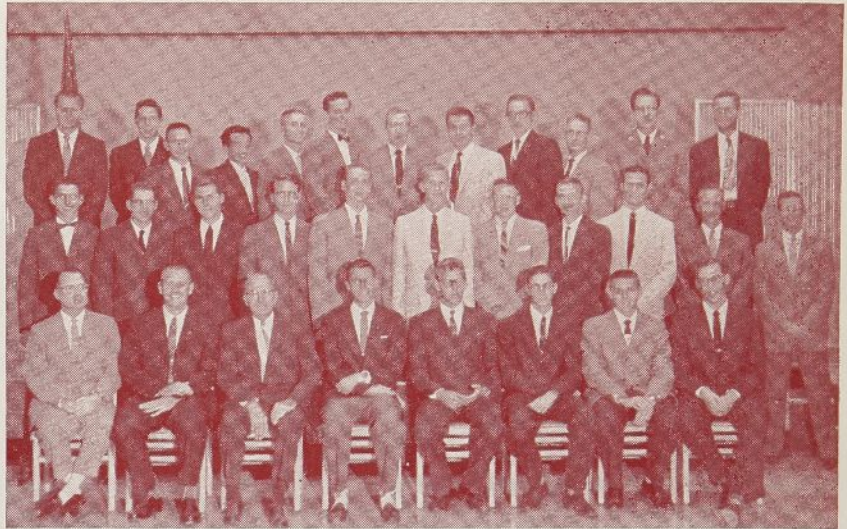
Elmaar H. Bakken... New Brunswick, N. J.  
Prof. Harry C. Barnett... East Lansing, Mich.  
Dr. Glenn R. Barr... Oxford, Ohio  
Dr. H. Roe Bartle... Kansas City, Missouri  
Dr. R. H. Bolyard... New Orleans, Louisiana  
Robert J. Bradshaw, Jr... Chattanooga, Tenn.  
R. L. Brittain... Auburn, Alabama  
George F. Cahill... New York, New York  
C. J. Carlson... Riverside, California  
Prof. Daniel Den Uyl... West Lafayette, Ind.  
M. R. Disborough... Louisville, Kentucky  
Benjamin F. Fay... Philadelphia, Penn.  
E. Ross Forman... Philadelphia, Penn.  
Irwin H. Gerst... San Pedro, California  
Robert J. Hilliard... Philadelphia, Penn.  
Dr. Lawrence L. Hirsch... Chicago, Illinois  
Frank R. Horton... Bangor, Pennsylvania  
Dean Lewis N. Jones... Lubbock, Texas  
Stanley Livingston... Ruleville, Mississippi  
Thornton M. Long... Waynesboro, Georgia  
Dean Arno Nowotny... Austin, Texas  
Rev. Robert J. Payne... Mt. Vernon, N. Y.  
Dr. Harold F. Pote... La Jolla, California  
Joseph Scanlon... Brooklyn, New York  
Prof. Kent D. Shaffer... Pittsburgh, Penn.  
Robert L. Slater, Jr... Chicago, Illinois  
Dr. Lester R. Steig... Palo Alto, California  
Dr. Willis M. Tate... Dallas, Texas  
Rev. Frans A. Victorson... St. Joseph, Mich.  
Delmer H. Wilson... New Brunswick, N. J.  
Dr. Ray O. Wyland... Tujunga, California

### National Publications Committee

William S. Roth, *Chairman*  
Thomas E. Walsh, *Vice Chairman*  
Rev. Robert J. Payne... Del Jay Kinney  
Sidney B. North

Introducing . . .

## MU PI CHAPTER AT COLORADO SCHOOL OF MINES



In recent ceremonies at Colorado School of Mines, this fine group was chartered as Mu Pi Chapter of Alpha Phi Omega. The ritual was conducted by Gamma Theta Chapter of the University of Colorado, and representing the national fraternity at this installation were J. D. Armstrong, Sectional Advisory Chairman, and Sidney B. North, Executive Secretary. Our entire fraternity wishes the best of success for this new chapter.

### NEW LIFE MEMBERS

Ten more brothers have subscribed for Life Membership since the previous list was published. We welcome:

Charles J. Fisher, *Lambda Zeta*  
Thomas F. Schweitzer, *Lambda Theta*  
John Michael Schaefer, *Gamma Gamma*  
Fonzo Dickerson, *Epsilon Xi*  
Richard O. Niemann, *Gamma Psi*

Cluff W. Johnson, *Mu Delta*  
John R. Miller, *Mu Nu*  
John H. Goodman, *Delta*  
Jerry Kopel, *Alpha Rho*  
Bruce R. Wake, *Beta Upsilon*

### ON OUR COVER

The press scoffed fifty years ago when the University of Missouri opened its School of Journalism. Most newspapermen of that era believed that only the "school of hard knocks" could train journalists.

Throughout this school year, special events are being held on the University of Missouri campus in commemoration of the 50th anniversary of journalism education. Top writers, editors and advertisers throughout the world are joining in congratulating the University of Missouri for pioneering in this field.

The school's first Dean was Walter Williams, a former editor of the Columbia, Missouri, *Herald*. Intent on avoiding a cloistered curriculum, Dean Williams started a daily paper of general circulation, The Columbia Missourian, prepared by his students. In later years, the school added radio station KFRU as a laboratory for journalistic training, and with the advent of television, KOMU-TV. The latter is one of the few commercial television stations in the world run by an educational institution and its undergraduate students.

The Missouri School of Journalism now offers a wide range of courses, from news, editorial and advertising sales to agricultural and medical journalism. Among its 7,000 graduates are many well-known authors, editors, columnists and foreign correspondents.

On our cover is pictured Journalism Arch which connects Ward A. Neff Hall and Walter Williams Hall of the University of Missouri's School of Journalism.

## DESIGN OF SERVICE

By Frank R. Horton

Founder of Alpha Phi Omega



Dr. Everett W. Probst

Brother Everett W. Probst, who passed away a short time ago, designed our beautiful Alpha Phi Omega pin and also drew the original coat-of-arms in 1925. He was one of the founders of Alpha Phi Omega and was first Alpha Chapter Vice President and first National Vice President. He often said that his inspiration for the design of our emblems came from a window in the Lafayette College Chapel.

After graduating from Lafayette College with a B.S. degree in chemistry, Brother Probst attended the New York University Medical School and for three years after receiving his M.D. degree he was a member of the NYU faculty and taught surgery. He later became an industrial surgeon and during World War II, served as a Lieutenant Colonel in the United States Army Medical Corps.

While at Lafayette College, Brother Probst was a member of Kappa Delta Rho social fraternity, Phi Alpha Sigma medical fraternity, and Alpha Phi Omega. He later became a member of the American Medical Association, New Jersey Medical Society, American Association of Industrial Physicians and Surgeons, Reserve Officers' Association, and Rotary International. In 1948, Alpha Chapter awarded Dr. Probst the distinguished service key of Alpha Phi Omega.

Brother Probst used his natural talents in designing the pin and coat-of-arms of Alpha Phi Omega. The pin has remained unchanged through the years. The coat-of-arms is fundamentally the same except that three torches and three trefoils were inserted in place of six three-leaf clovers.

Brother Probst's contribution to Alpha Phi Omega will live in the hearts and minds of brothers throughout the years ahead. His insignia will continue to inspire countless generations and his life of ideals will stand out as a beacon light of Leadership, Friendship and Service.



SAY,  
DID YOU  
KNOW?

—The Ugly Man Contest is one of the most popular AΦΩ projects throughout the nation. It arouses wide interest on the campus and is a "painless" way to raise money for a charitable cause. If your chapter has not conducted an Ugly Man Contest and would like to receive further details about it, please write to our National Office.

—Materials for chapter use during the Spring semester are available from the National Office. We suggest your chapter check its present supplies and order whatever quantity you feel you will need of census cards, Question and Answer pamphlets, Pledge Manuals, etc., for use in the weeks ahead. Shipments of materials are sent the same day the orders are received. However, even with immediate shipment, we urge chapters to place orders as early as possible for such materials as are needed. Last minute ordering can sometimes cause disappointments. Please order as soon as you know your needs.

—The Directory of Life Members and Alumni Chapter Members has been mailed by the Directory Committee to all chapters throughout the nation. We recommend looking it over to notice the Life Members who are located near your chapter. The second section of the book, beginning on page 50, is alphabetized by states and cities. Why not invite Life Members who are within reasonable distance of your campus to attend some of your special activities. Any member or any chapter desiring an additional copy of the Directory may secure it for one dollar by writing to Manfred O. Aws, Jr., Alumni Directory Committee, 40 West Gay Street, Columbus, Ohio.

—Pictures showing members and pledges of your chapter working on service projects are desired for use in future issues of TORCH AND TREFOIL. 35 mm. slides pertaining to service projects are requested for use in the collection being assembled by the National Office.

## Sectional Conferences

Your Sectional Conference offers excellent opportunity to get together with brothers from other chapters to exchange ideas about chapter projects and methods. The following conferences are scheduled for the immediate future:

**Southwest Sectional Conference** for all chapters in Texas, Oklahoma and New Mexico, to be held at Albuquerque, New Mexico, February 21 and 22, 1959.

**Middle States Sectional Conference** for all chapters in Ohio, Kentucky and West Virginia, to be held at Oxford, Ohio, March 14 and 15, 1959.

**Pacific Coast Sectional Conference** for all chapters in California, Arizona and Utah, to be held at Berkeley, California, April 4 and 5, 1959.

**Eastern Sectional Conference** for all chapters in Pennsylvania, Delaware, Maryland and the District of Columbia, to be held at University Park, Pennsylvania, April 11 and 12, 1959.

Other Sectional Conferences will be announced in future issues. Details and information about the conference plans for each section is sent well in advance of the meeting in the National Bulletin to chapter officers and advisors. Be sure to attend your Sectional Conference. You'll enjoy it!

# Why SAFETY as a Safety Project?

By Daniel P. Webster

Senior Consultant, School and College Division  
National Safety Council

A noted educator once asked, "Of what use is all of the education in the world to a youth who is killed before he reaches 21 and who never has the opportunity to use what he has learned?" With this question in mind, and in view of the number of college students killed, maimed, or injured each year—as studies have shown—lies the reason for selecting *Campus Safety* as a principal goal for 1959. The following facts clearly point out that safety is a very worthy area of endeavor:

- More youths of college age (using ages 15 to 24 for statistical information) are killed each year in accidents than from all other causes of death combined.

- On the basis that one out of every four youths of this age are attending college, it is estimated that over 3,000 college students each year meet untimely deaths due to accidents.

- Surveys made by the National Safety Council and by certain colleges show that as high as one out of four or five students has an accident while attending college, severe enough to require treatment at the health service or hospital.

- The chances are 1 in 18 that a residence building on your campus will be damaged or destroyed by fire this year, based on reports and estimates of the National Board of Fire Underwriters and the National Fire Protection Association.

- The greatest single cause of deaths among college students are traffic accidents. The typical college each year loses a number of students who are killed, or injured so severely that they are forced to drop out of school.

The purposes of a campus safety program should be twofold: To provide for safety of students while attending college; and to instill habits which will carry over into out-of-school situations and in later life.

## Selecting a Safety Project

In your preparation for safety projects there are a number of criteria

which should be considered in planning both immediate and long-range programs. These may include:

1. *Is there a need for the project?* There would probably be little need for a bicycle safety campaign at a college located in hilly terrain where few students use bicycles. On the other hand, if there is a large number of automobiles on campus, your chapter might contribute to student safety by assisting in marking parking areas, making traffic counts, conducting a voluntary motor vehicle inspection. *Be sure of your facts, and the need.* Find out if the college has reporting procedures so that you can determine the numbers and causes of accidents, fires, and other incidents.

2. *Will the project contribute to accident prevention?* One-shot drives

and campaigns have their places in a safety program, but their effectiveness is usually short lived. An example of a worthwhile short term project is the "Home for the Holidays—and Back!" traffic safety campaign conducted just prior to Easter or Christmas. Make sure your project will meet your objectives. Contests on safety posters, articles, and similar devices are useful as part of a broader program.

3. *Is the project a logical one for APO?* In selecting a project, seek the advice of staff and faculty members to make certain that it will not conflict with or duplicate services or activities which are already under way, or a more logical function of some other group. This will, of course, depend upon the conditions at your college, but for the sake of example, a

Each year, thousands of dollars worth of property is lost by fires in student housing . . . in value of buildings and in clothing and other personal property of students. The picture below shows one student who was able to get out with some of his clothing. This picture and the other illustrations with this article are by courtesy of the Federation of Mutual Fire Insurance Companies.



voluntary inspection of student housing is usually considered appropriate, whereas inspections of high pressure boilers or laboratories might not come in the scope of a student project. Generally it is wise to avoid those projects which are regular administrative responsibilities of the college and in which student assistance is not needed. It is particularly helpful to the administration to develop projects in areas of unsupervised student activities, such as recreational, driving, and living practices.

4. *Is the project timely?* Timing is important to the effective carrying out of any project. If the activity will involve student participation, publicity through campus newspaper and radio, preparation of special materials, organization of committees to carry out specified functions, a number of months may be required to properly develop all steps without overlooking important details. Don't start a project if there isn't time to carry it out properly. Also, make certain that the project is scheduled for the time of year when exposure to accidents is the highest, or immediately preceding such exposure.

#### Don't Try to Do It Alone!

The easiest way to run afoul with your project is to launch it without consulting other persons on the campus and in the community who have an interest or responsibility in the area of activity. You can this way lose much valuable support and assistance which may spell the difference between success or failure of the undertaking. Consider the following steps:

1. If chapter membership is too large to develop plans as a body, appoint a steering or planning committee to investigate project possibilities and report back to the membership.

2. Without making definite commitments (pending approval of the chapter) this committee should:

- Find out *who* on the campus has reliable information about accidents and safety needs.
- Secure this information, and suggestions for a project helpful to the college.
- Determine college and community personnel or organizations concerned with the project. This will vary depending on the project, but may include:

*College*  
APO Faculty Advisor  
  
College Safety Engineer or Director of Traffic and Security  
  
Deans of Students  
  
Director of Public Relations, Campus Newspaper Editor, Director of Campus Radio

*Community*  
Police Chief or Traffic Safety Director  
  
Fire Chief or Marshal, Head of Building Department  
  
Insurance Company Representatives  
  
Newspaper Editors and Radio Station Directors

—Outline the various steps in the project, indicating tentative deadline dates for completion of each step.

—List special committees necessary to carry out the steps, and the functions of individuals both within and outside of AΦΩ.

3. Submit to the AΦΩ chapter for refinement and adoption *following approval and indication of support* of other organizations and individuals concerned.

#### Suggested Project—Voluntary Housing Inspection

Of the threats to students' safety during the winter months, one of the most serious is that of fire. Since studies have shown that the college fires most costly in human lives break out in residence buildings rather than in classroom or administrative buildings, a voluntary inspectional program or competition is suggested. This may be followed with a "Spring Clean-Up Campaign," to be explained in the March issue, as a means of ridding student residences of unneeded or discarded materials which might contribute to fires or accidents. Should you need additional information or advice not available locally, you may contact the Campus Safety Association of the National Safety Council, 425 N. Michigan, Chicago 11, Illinois.

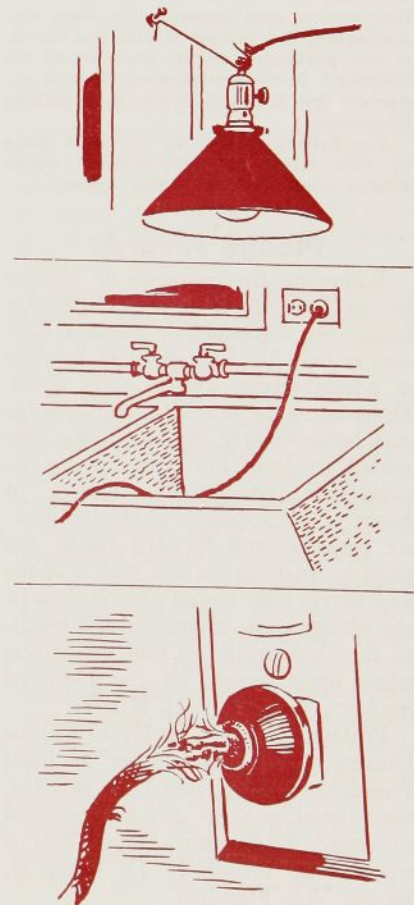
The voluntary housing inspection involves getting all, if possible, of the housing units on the campus rated according to their status of fire and safety conditions and practices. The natural interest in the findings can be enhanced if it is made competitive to the degree of giving awards, possibly obtained through the cooperation of local merchants, for the *best* fraternity, sorority, co-op, men's and women's

*(Continued on page six)*



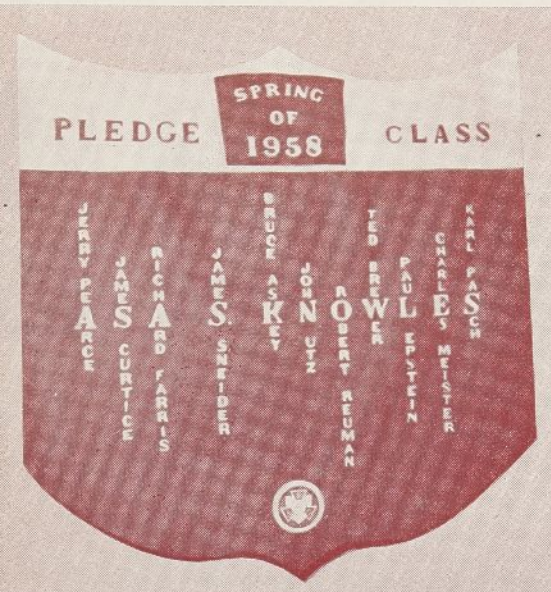
**Instruction in the handling of fire extinguishers and how to use them at a fire is important. In large dormitories, well-trained student fire brigades with actual assignment in fire fighting are desirable.**

**Worn cords cause most of the electrical fires. Cords strung over nails, tied back with wire, etc., should be prohibited. Cords with ordinary insulation should not be used near water. Plugs with frayed cords should be replaced. These are some of the precautions which can be pointed out in fire inspection.**



## PLEDGE CLASS HONORS

## Dedication Banner



In last Spring's pledge class dedication, Zeta Lambda Chapter at the University of Toledo prepared a banner showing the names of the pledges and honoring Dr. Asa S. Knowles for whose fine service and devotion the class was dedicated. The banner is pictured above. It was presented on the occasion of the chapter's tenth anniversary. This is reported by Richard Fredrick, Publicity Chairman.

See Bulletin Board on the back page of this issue for information about pledge class dedication this Spring.

## Pledge Awards

Following the initiation of pledges in the Dr. Albert Schweitzer Pledge Class, MU CHAPTER at Indiana University held its Fall semester banquet at which several awards were given. Honored as the best all-around pledge was James Gentry. An award was presented to Jerry Ford for having accumulated the greatest number of hours of participation in chapter service projects, and Richard Bland was cited for making the best replica of the key. Jerry, who served as president of the pledge class, announced the results of the class project, a poll which was taken upon request of the Dean of Students, Dr. Robert H. Shaffer.

Professor Daniel Den Uyl of Purdue University, who served as National President of AΦΩ from 1950 to 1954, was special guest at this meeting and addressed the banquet group. This is reported by Wilson H. De Camp II, Second Vice President.

## SAFETY PROJECT

(Continued from page five)

dormitories. In addition to promotion of the project through all available public relations media, the project requires development and use of a checklist or other device which both serves to identify unsafe conditions and practices and at the same time suggests corrective action. It further requires the organization of inspectional teams of technical and lay personnel. Alpha Phi Omega should serve as the organizing and coordinating body, but preferably not as inspectors.

Following general approval of the project by the Deans of Students, Director of Safety or equivalent and Director of Housing, the various steps in the project should be assigned to committees, with suggestions as to procedures and contacts. These may include:

- Inspection Committee, comprising Director of Housing; student representatives of fraternities, sororities, dormitories; Superintendent of Buildings and Grounds; Fire Chief (or his representative); representative of Department of Buildings; college safety engineer; insurance representatives; AΦΩ member. The functions of this committee are to develop the inspectional checklist (specimens available from National Safety Council); determine membership of inspectional teams; designate schedule of dates of inspections.

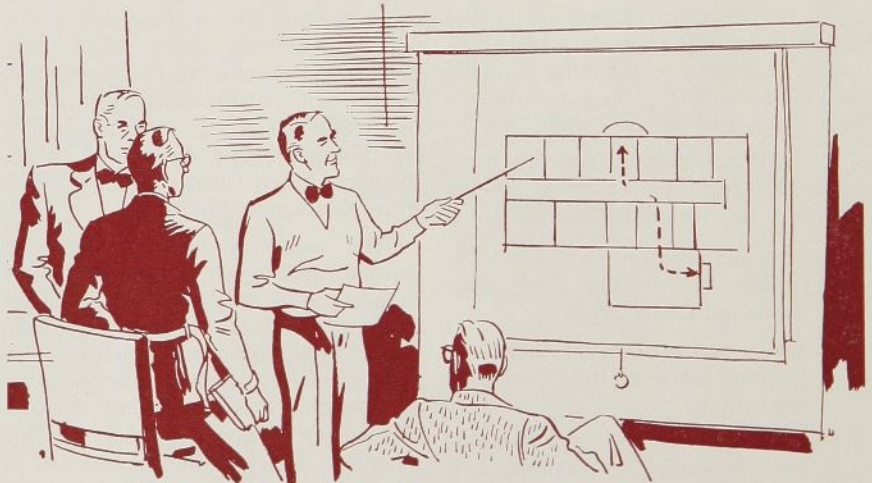
- Publicity Committee, including representative of college newspaper and radio station or public relations department, in addition to AΦΩ members. Contacts the various public rela-

tions media of the college and community and learns the types and dates of materials they can use. Drafts releases on purposes of inspection, names of participating groups, persons assisting in the project, houses and dormitories which volunteer to participate. Prepares draft of articles on housing safety, with suggestions for improving fire safety of student housing. Arranges for news coverage of inspections, and presentation of awards.

- Awards Committee, for the most part composed of AΦΩ members. This committee should not serve as the judging committee—it is preferable to use impartial technical people such as fire, insurance, housing representatives—but does determine awards needed and arranges for purchase or contributions of awards, and presentation by a college official.

Publicity in this type of an activity is very important. It should be used as soon as the project is approved, so as to keep students, college staff members and the community abreast of the objectives and progress made in the project. For by-line stories, brief articles or releases by the local fire chief, housing inspector, and other persons can be valuable in stimulating interest and in supplying positive suggestions for making housing fire-safe.

Make your project successful, and it may become a springboard for periodic voluntary inspections performed largely by students with guidance of specialists. Above all, it can create an awareness of the needs for action in preventing housing fires and be an important part of the educational program through "learning by doing."



An evacuation plan is desirable, particularly in two-story or taller dormitories and fraternity houses. Fire safety methods are stressed in connection with the voluntary housing inspection.

## MEET OUR ZONE OPERATIONS DIRECTORS



**Irwin H. Gerst**  
Western Operations Director



**Dr. Lawrence L. Hirsch**  
Central Operations Director



**E. Ross Forman**  
Eastern Operations Director

Brother Irwin H. Gerst has been affiliated with Alpha Phi Omega since 1948 when he became a charter member of Epsilon Chi Chapter at Los Angeles City College. He served his chapter with distinction, holding numerous offices, including Chapter President, and graduated with a B.A. degree in 1949. He earned his B.A. degree in Industrial Management from Los Angeles State College in 1951. In 1958 he added still another degree after graduate work in the School of Commerce at the University of Southern California, this being M.B.A. in Industrial Management.

From 1944 to 1946, Irwin served as a non-commissioned officer in the United States Army in the Pacific.

Brother Gerst rose to national leadership in Alpha Phi Omega when he was elected to the National Executive Board at the 1950 Convention. He was elected by the 1954 Convention to serve as National Second Vice President and unanimously re-elected in 1956. He was Arrangements Chairman for the 1956 National Convention.

Brother Gerst has participated in numerous Sectional Conferences and was elected as an honorary member of Lambda Mu Chapter at Los Angeles State College. He is a charter member

of the Los Angeles Area Alumni Chapter.

He entered Scouting in 1938 at age twelve and has remained active in leadership. In the Los Angeles Council he now serves as a member of the Crowd Control and Service Committee at each year's "Big Show" and thus brings to AΦΩ a big assignment and responsibility.

Brother Gerst is a project administrator in research engineering for Ramo-Wooldridge Corporation in Los Angeles.

He has shown splendid capability in carrying out responsibilities entrusted to him as a national leader of our fraternity and is ably handling the work of Zone Director for the Western Zone.



Brother Lawrence L. Hirsch, affectionately known as "Pinky" to his many friends, has distinguished himself in Alpha Phi Omega with his splendid leadership and service since becoming a member of Alpha Alpha Chapter in 1940. He has a rich background in Scouting as an outstanding volunteer, serving in positions of troop leadership, neighborhood commis-

sioner, district commissioner, advancement chairman and aquatic director and district chairman. He is a member of the Executive Board of the Chicago Council, member of the council committees on health and safety, camping, and camp development. He is a committeeman for Region VII and a member of the National Council of the Boy Scouts of America.

His personal Scouting achievements are the Eagle Scout award, member of the Order of the Arrow, and recipient of the Silver Beaver award.

Brother Hirsch received his B.S. degree from the University of Illinois in 1943 and earned his M.D. degree in 1950 at the same university. Between 1943 and 1946 he served in the United States Army as a non-commissioned officer with distinction.

Dr. Hirsch is affiliated with the Chicago Medical Society, Illinois Medical Society, American Medical Association, American Academy of General Practice, and numerous other associations. He serves as a member of the Nursing School Faculty of the Illinois Masonic Hospital as well as a member of the Attending Staff of that hospital. He has served his community with distinction and has received the

(Continued on page eleven)



### Party for Children

ETA SIGMA CHAPTER at *Illinois College* conducted a Christmas party for underprivileged children of Jacksonville, Illinois. It was very heart-warming, reports Jack Lee Schmitt, President.

### Contest Is Doubled

The total in ZETA DELTA CHAPTER's Ugly Man contest at *Miami University* was \$811.00, twice the amount brought in last year. The chapter has recently given assistance to the Miami Chest Drive, provided luggage service for Thanksgiving vacation, made a sizable contribution to CARE, distributed student directories, assisted during Freshman Week, put up decorations for Dad's Day, and has maintained a share-the-ride board service. All's fine at Miami, reports Thomas E. Wick, Chairman of the Advisory Committee.

### Aid to Training Session

ZETA SIGMA CHAPTER at the *University of Delaware* recently served refreshments to men attending a Scout Leader Training Session. The group provided orientation guides for freshman week in the Fall and furnished guide service and information at Parents Day and provides ushering for numerous campus functions. This is reported by Dr. E. J. Cain, Chairman of Advisory Committee.

### Decorate Goal Posts

One of the Fall projects of EPSILON IOTA CHAPTER was the decorating of goal posts for all *Mississippi State University* home football games. Other services rendered included assisting with registration, providing guides for visiting high school students and assisting local Scout troops. This is reported by Professor Richard H. Heron, Chairman of Advisory Committee.

### Work at Orphanage

The members of DELTA NU CHAPTER at *Yale University* contribute work bi-weekly at a local orphanage and conducted a Halloween party for the children. Other Fall projects have included a blood drive which brought in 952 pints, the book exchange, providing Explorer program teams, a canned goods drive for Foster Home, and ambulance service. This is reported by Elliott H. Kone, Chairman of Advisory Committee.

### Blood Drive

Projects of BETA THETA CHAPTER at the *University of Wisconsin* for the Fall semester include a blood drive and a donation to CARE. These services are reported by Dr. David A. Baerreis, Chairman of Advisory Committee.

### Lost and Found

MU PI CHAPTER, recently installed at *Colorado School of Mines*, has established a permanent Lost and Found service on the campus. The chapter also recently participated in the Denver Area Council Eagle Award Ceremony which was held in Golden, and has handled distribution of the Career book to seniors. This is reported by Gary S. Klein, President.

### Swimming for Scouts

ETA UPSILON CHAPTER at *Marshall College* carries on a swimming instruction program for local Boy Scouts throughout the entire school year. The chapter recently earned \$95.00 for purchasing intramural trophies. This is reported by Dr. N. Bayard Green, Chairman of the Advisory Committee.

## CENSUS AT REGISTRATION



Kappa Omicron Chapter members at the *University of Massachusetts* are shown manning the census table during registration. Don Lawrence, then a pledge, is shown at left wearing an arm band, while Frank Putnam and Jim Hirtle are wearing hats which are now traditional for active members of this chapter. The use of the census cards furnished by the National Office is an excellent way of finding men who are eligible and interested to be invited to attend open meetings as prospective pledges.

## Civil Defense Alert

The state government of Ohio located at Columbus, was "relocated" on the campus of *Ohio University* during a Civil Defense operation alert on December 5. DELTA GAMMA CHAPTER of AΦΩ gave its services to the state on this occasion. Members were dispatched to many locations to help in numerous ways. Some of the members who are ham operators gave assistance to the communications center and relayed messages to the Civil Defense headquarters in Westerville, Ohio. The chapter also recently ushered at the Dramatics Department play "Desk Set" and will provide this service for all other plays during this school year. This is reported by Robert E. Patterson, Corresponding Secretary.

## New Clock for Gym

EPSILON CHAPTER has donated a clock for the new gymnasium at *Northeast Missouri State College*. Other recent projects include freshmen registration last Fall, assistance at Homecoming, and selling pop at two dances. This is reported by C. Hugh Gardner, Chairman of the Advisory Committee.

## Aid to Clinic

ALPHA OMEGA CHAPTER at *Kirkville College of Osteopathy and Surgery* has recently furnished the Downing Rural Clinic with furniture, medicine cabinets, medicine carts, refrigerator, lamps and miscellaneous items. The chapter has also purchased water pumps for two other rural clinics, installed lights in the display cabinets in the College's Anatomy Laboratory, and assisted in the Red Cross blood drive. Funds for the purchases and donations were earned from operation of coke machines on the campus. This is reported by Dr. George E. Snyder, Chairman of the Advisory Committee.

## Program Sales

DELTA PI CHAPTER handled sales of programs at football games during the Fall season at *Trinity University*. Other recent projects include "Air Horn" for football games, Chapel ushering and cooperating at homecoming. This is reported by Dr. Donald E. Everett, Chairman of the Advisory Committee.

## TO HONOR FOUNDER

On February 28 and March 1, Alpha Chapter will honor Brother Frank R. Horton, founder of Alpha Phi Omega. The chapter invites as many other chapters as possible to join in this Pilgrimage to Lafayette College, the birthplace of AΦΩ. The story of the founding and early history of our fraternity will be related on this occasion to all in attendance. Further details about the Pilgrimage are available from Alpha Chapter.

## Books for Asia

At *Pennsylvania State University*, ALPHA BETA CHAPTER recently conducted a book drive for Asia. Other projects in the Fall term include an Ugly Man contest, ushering at concerts, infirmary service and poster service for campus organizations. These projects are reported by Professor H. Norton Cope, Chairman of Advisory Committee.

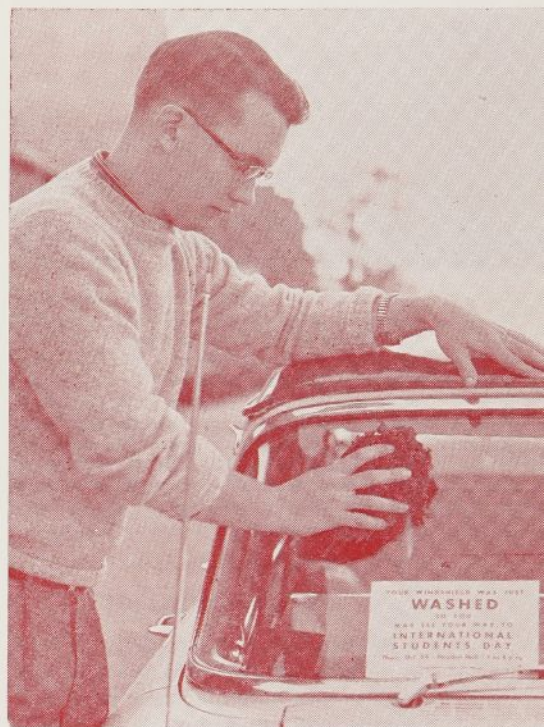
## Assistance to Scouters

ALPHA ETA CHAPTER assisted in conducting a Scout Commissioner's conference held recently on the campus of the *University of Kansas City*. As a result of the fine job, opportunity was given for a presentation about AΦΩ at a meeting of all District Commissioners of the local council. The chapter furnished a Freshman Orientation information committee in the Fall, provided guides for new students, high school visitors and civic groups, and has provided ushers at the Playhouse and at the dedication of the new William Volker monument. These projects are reported by William E. McCreary, Chairman of the Advisory Committee.

## Christmas Baskets for Needy

Proceeds from EPSILON UPSILON CHAPTER's Ugly Man contest at *Wisconsin State College* at Oshkosh were used to provide annual Christmas baskets for needy families. Other recent projects of the chapter include conducting the campus blood drive for the Red Cross, marshalling the Homecoming Parade, parking cars for two college functions and operating a football game concession stand. These projects are reported by Professor Everett G. Pyle, Chairman of the Advisory Committee.

## CLEARING THE WAY

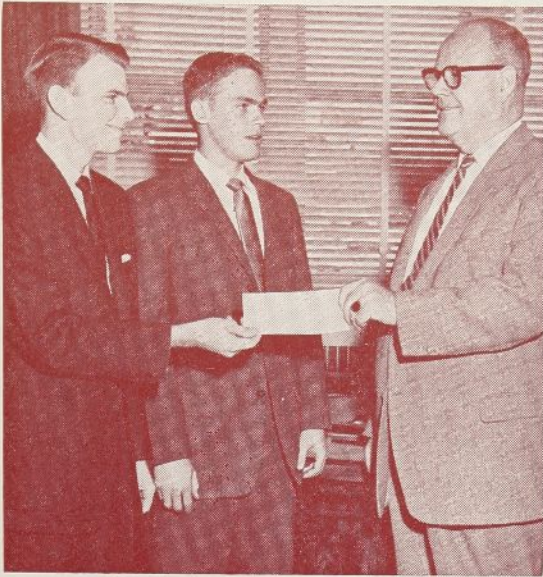


Members of Zeta Upsilon Chapter at Boston University cleaned windshields and placed a placard on each as shown in this picture. It was a clever way to publicize International Students Day.

## Supervise Elections

LAMBDA PI CHAPTER supervised the voting at freshman elections in the Fall at *La Salle College*. The group also assisted in freshman orientation, and other recent projects include ushering at Opening Mass and Requiem for Pope Pius XII, distribution of gowns for convocation, handled a career forum for seniors, provided aid and typing service to the Alumni and Placement Offices, and handled a drive for funds for a bell for the college. This is reported by Brother Gavin Paul, F.S.C., Chairman of Advisory Committee.

## CONTRIBUTE TO BUILDING FUND



A Student Union Building for California State Polytechnic College in San Luis Obispo is a little nearer realization as Zeta Omicron Chapter of APO contributes proceeds from its annual Ugly Man contest. The picture above shows Ralph Paulin, Chapter President (left), and Chic Jones, Vice President, presenting a check in the amount of \$238.00 to Dr. Julian A. McPhee, President of the College. This is reported by Dean John D. Lawson, Associate Dean of Students.

## College Mascot

PI CHAPTER at *Kansas State College* has charge of taking the Wildcat, college mascot, to all home basketball and football games.

## Welcoming Signs

DELTA CHI CHAPTER constructed and placed signs in prominent places on two occasions recently welcoming visitors to the campus of *Texas College of Arts and Industries*. The chapter also recently assisted in homecoming and Dad's Day activities and has carried on magazine subscription sales to raise money for the chapter treasury. This is reported by Dean J. E. Turner, Chairman of the Advisory Committee.

## Orphans' Christmas Party

Prior to the recent Christmas vacation, GAMMA THETA CHAPTER at the *University of Colorado* conducted a Christmas party for orphans. Other recent projects include the Lost and Found service, ushering at university functions and boosting school spirit. Thirty-five members have purchased blazers. This is reported by Professor Lisle T. Ware, Chairman of the Advisory Committee.

## Campus Beautification

DELTA CHAPTER recently bought and planted \$200.00 worth of grass around the campus of *Alabama Tech*. The chapter has also distributed the "Career" book, helped stuff envelopes for registration, ushered at concerts, and operated a non-profit book exchange, establishing an all-time high for this quarter's operation. This is reported by Carl E. Frisby, Chairman of Advisory Committee.

## Contest for Care

The proceeds of THETA DELTA CHAPTER'S Ugly Man contest at *Waynesburg College* have been contributed to CARE. The group is building a portable altar for the College Chapel and has recently completed a campus directory, assisted in reassigning room numbers for the college, did painting at the Student Union and handled ticket canvassing for the Playhouse. The group operates a concession stand at all games. This is reported by Professor Frederick R. Owens, Chairman of the Advisory Committee.

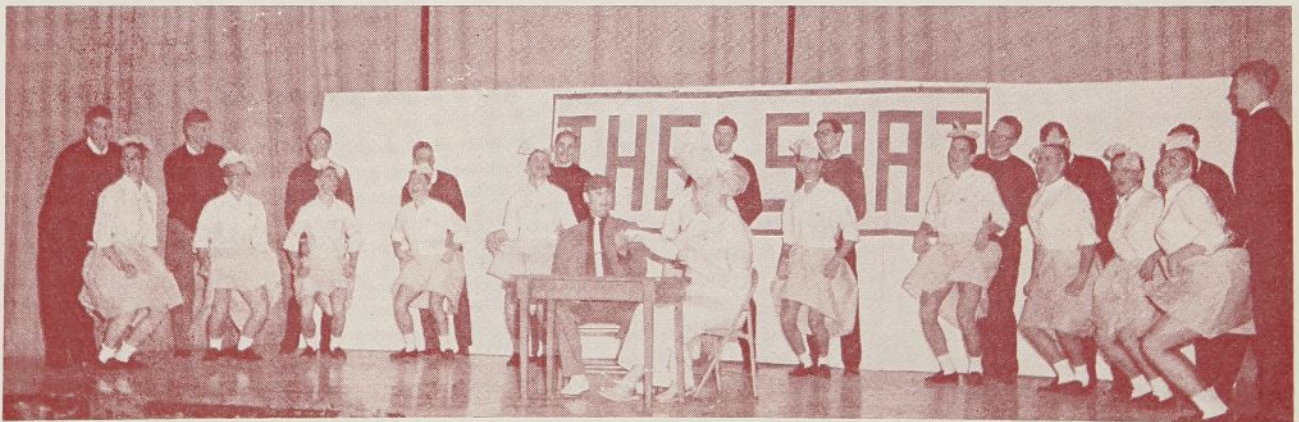
## Safety Assistance

ETA MU CHAPTER assisted in a Christmas safety project in Utica by serving hot chocolate to Boy Scouts on duty in the safety patrol. The chapter directed a block dance in freshmen week in the Fall, conducted a Christmas party for orphans, and has handled several improvement projects for the *Utica College* campus. This is reported by Dr. Jacob Oser, Chairman of Advisory Committee.

## Used Book Exchange

Among the service projects of GAMMA DELTA CHAPTER at *The Baruch School of Business and Public Administration* this past semester are the used book exchange, record sale and blood bank. This is reported by Dr. Marvin Magalaner, Chairman of Advisory Committee.

## ANNUAL WESTMINSTER REVUE



The second annual Westminster Revue was sponsored recently by Beta Xi Chapter. The above picture shows the winning skit "Peg and Sam" which was presented by Sigma Chi Fraternity with an all-male cast. An Alpha Phi Omega travelling cup is presented to the winner each year. This year's show was a great success with a fine audience of students, faculty and townspeople. The proceeds will be used for various projects which the chapter will carry out on the campus. This news and picture are by courtesy of Dr. William E. Parrish, Chairman of the Advisory Committee.

## Help Tuberculosis Association

RHO CHAPTER at the *University of North Carolina* stuffed 7,000 envelopes with letters and Christmas seals for the tuberculosis association. Other projects in the Fall semester include ushering at eight student dramatic performances, clearing land at Bugg's Island recreation area, adopting a needy family at Christmastime, and helping move heavy Christmas boxes for a woman's organization. This is reported by James E. Wadsworth, Chairman of Advisory Committee.

## Homecoming Luminaries

As is traditional, DELTA TAU CHAPTER at the *University of New Mexico* decorated the Men's Dormitory with luminaries during homecoming week end. The chapter also assisted with freshman orientation last Fall, ushered at football games, provided campus tours for the state teachers Convention, distributed the student directory, sponsored a campus toy dance, and distributed the Career book to seniors. This is reported by Jerry Hubbard, Jr., Assistant Dean of Men.

## Christmas Decorations

At *Millersville State Teachers College*, ETA IOTA CHAPTER provided Christmas decorations for the campus and also recently assisted at Homecoming and provided ushering for college programs. The chapter regularly maintains the campus bulletin boards. These services are reported by Dr. C. Maxwell Myers, Chairman of Advisory Committee.

## Thirty-third Anniversary

Commemorating the thirty-third anniversary of the founding of Alpha Phi Omega, ALPHA CHAPTER at *Lafayette College* conducted its Fall initiation ceremony in December. Brother Frank R. Horton, founder, participated, Dr. K. Roald Bergethon, President of *Lafayette College*, and Dean Charles C. Cole, Jr., Dean of the College, were initiated as honorary members. This is reported by W. Laurence Whitbeck, Corresponding Secretary.

## Guide Service

At ST. CLOUD STATE COLLEGE, *Lambda Epsilon Chapter* recently provided guide service for high school

students touring the campus, and sponsored a Red Cross Blood Drive. These services are reported by Dr. Max L. Partch, Chairman of Advisory Committee.

## Party for Needy Children

GAMMA CHI CHAPTER at *Howard College* conducted a Christmas party for needy children. The chapter also assisted with registration at the beginning of the Fall term, assisted at Homecoming, conducted an Ugly Man contest, and has charge of raising and lowering the American flag on the campus. These projects are reported by James A. Clarke, Chairman of Advisory Committee.

## MEET OUR ZONE OPERATIONS DIRECTORS

(Continued from page seven)

VFW Award for Merit. He is a Free Mason, Shriner and member of the American Humanics Foundation. He is a member of the Board of Directors of the Duncan-North Avenue YMCA in Chicago and a member of the Chicago Natural History Museum.

Brother Hirsch is a Life Member of Alpha Phi Omega and past president and charter member of the first alumni chapter. He has been awarded the distinguished service key and is a member of the National Executive Board. In 1956 and 1957 he served as National Extension Chairman of AΦΩ and in 1957 was Scoutmaster of the Alpha Phi Omega Service Troop at the National Boy Scout Jamboree. He is now a member of the National Finance Committee and was elected a Trustee in 1956.

Pinky has unselfishly discharged his responsibilities in Alpha Phi Omega and is eminently qualified to serve as Operations Director for the Central Zone of our fraternity.



Brother E. Ross Forman became affiliated with Alpha Phi Omega in 1948 as a charter member of Zeta Theta Chapter at *Drexel Institute of Technology*. He served the chapter in several capacities including Vice President, and later became a charter member of the Philadelphia Area Alumni Chapter. He has distinguished himself in our fraternity by his meritorious service to campus, community and nation.

In 1952, Ross was elected to the National Executive Board and while serving in that capacity he instigated the reactivation of Zeta Sigma Chapter at the *University of Delaware* and the chartering of Lambda Pi Chapter at *La Salle College* and aided in establishing the biennial Pilgrimage to *Lafayette College*, the location of our founding.

In 1954, Brother Forman was elected as National Third Vice President and was unanimously re-elected by the delegates at the 1956 Convention. In this capacity he established the alumni sub-committees for service, extension, undergraduate relations, public relations, and national alumni directory, and he wrote the Alumni Manual of Administration.

Scouting has benefited from his services as a counselor for Public Speaking merit badge and he has directed and served at several camps. During World War II he established contact with Scouts in the French underground.

Brother Forman received his B.S. degree in Mechanical Engineering from *Drexel* where he also earned his M.S. in Business Administration. He has studied at the Universities of Maryland and Pennsylvania. He conducted an advance course in Automation at *Ogontz Center of Pennsylvania State University* in 1957. Professionally, he is associated with the sales department of the *Moore Products Company*, a leading instrument manufacturer.

Among his publications is his 1953 Thesis on Industrial Instruments in Industry, along with several articles for the *Graduate School of Business* magazine and the *Technical Press*. As a registered professional engineer, he has given several addresses on Automation before Technical and Management societies and civic groups as well as before *City College of New York* and the *United States Naval Academy* at Annapolis.

His military service during World War II was with the third army, commanded by General George Patton, and he participated in the famous Battle of the Bulge.

Among Ross's civic activities is his membership and service in the Junior Chamber of Commerce.

Brother Forman has given outstanding service in Alpha Phi Omega and is entering enthusiastically upon his new post as Operations Director for the Eastern Zone.

# *How to Describe Alpha Phi Omega to a Prospective Pledge*

*When a prospective pledge asks about Alpha Phi Omega, how should you define our organization?*

Alpha Phi Omega is a national service fraternity, composed of college and university men who are or have been previously affiliated with the Boy Scouts and who have joined together to render service.

*What are the requirements for membership?*

There are three requirements for membership in Alpha Phi Omega: (1) Previous experience in Scouting. (2) Desire to render service to others. (3) Satisfactory scholastic standing.

*What is the reason for a period of pledgeship in Alpha Phi Omega?*

Pledgeship in AΦΩ is for the purpose of introducing each new pledge to the history, traditions and principles of our brotherhood, and to give the pledge opportunity to prove his desire to serve the campus and community.

*Does affiliation with other fraternal groups preclude membership in Alpha Phi Omega?*

No, affiliation with other fraternal groups does not affect membership in AΦΩ. Members of other honorary, social and professional organizations are welcome to become members of Alpha Phi Omega upon meeting the chapter and national entrance requirements.

*What is the program of Alpha Phi Omega?*

Our fraternity carries on an active service program in four major fields: Service to the student body and faculty, to the community, to the members, and to the nation as participating citizens.

## **BULLETIN BOARD**

### **PLEDGE REGISTRATIONS**

Applications for new pledges should be sent to the National Office promptly after your Spring term pledging ceremony. By action of the National Convention, pledge applications should be mailed within three days after the ceremony is held. Under this plan it is necessary that each pledge have his application filled out and his pledge fee paid before being permitted to pass through the pledging ceremony. It is important that every chapter register its pledges promptly. A letter of recognition is sent to each pledge when his application arrives in the office.

### **SPRING DEDICATION**

It is recommended that again each chapter dedicate its Spring 1959 Pledge Class in honor of a local leader whom the members deem merits this recognition.

In your chapter there is undoubtedly someone whose service and leadership and devotion stands out above all others for the past year . . . some advisor, college official, Scouter, or other leader who has given particularly outstanding service in Alpha Phi Omega.

This dedication offers opportunity to say "Thanks" in a big way for exceptionally fine service.