

# TORCH AND TREFOIL

## OF ALPHA PHI OMEGA



### A LETTER TO YOU FROM THE NATIONAL PRESIDENT

My dear Brothers:

The most vital message in the history of Alpha Phi Omega was sent on March 15 to the Presidents, Secretaries, Senior Faculty Advisors and Senior Scouting Advisors of all chapters in the fraternity. That communication marked the opening of a nation-wide expansion program, to enlarge the membership of every chapter and to bring 1000 new active members into Alpha Phi Omega by June 10, 1939.

INCREASED MAN-POWER in our fraternity will result in INCREASED SERVICE-POWER. In the large majority of our chapters, a stronger membership is needed immediately to expand their service activities and to successfully carry out the work which their campuses have a right to expect of this National Service Fraternity.

In view of this need, your National Executive Board is calling upon every chapter to join in a twelve-week period of intensive recruiting to produce adequate man-power to insure the local and national stability of the fraternity and to intensify our service program. This is an important plan of action, in which every chapter has been assigned a quota of new members to initiate as a part of the national program.

In the spirit of fun, we have injected into this great campaign the terminology and color of the west, with seven ranches for the Round-Up. Seven hard-ridin' Brothers have been appointed as Ranch Bosses. Each chapter has become a "range" on which the "hands" have set out to brand a quota of mavericks and stamp the spirit of Alpha Phi Omega in the hearts and souls of many new members.

The following four pages of this issue of TORCH AND TREFOIL are devoted to a full statement of the details of this great Round-Up. Read these pages carefully to see how your chapter fits into the national picture. The success of this plan is vital to the future of Alpha Phi Omega and it depends upon the cooperation of every chapter of our beloved order.

I urge every chapter officer, every active member, every pledge, every advisor and honorary member, and every available alumnus of Alpha Phi Omega to give his very best support to this national expansion program.

Faithfully and fraternally yours,

National President

March 20, 1939





### As The National Executive Board Prepared For The Round-Up . . .

The members of the National Executive Board have entered enthusiastically into the plans and preparations for this great national expansion program. They were unanimous in their approval of this type of campaign to increase the man-power and the service-power of every chapter in the fraternity.

Notice below the interesting and valuable comments of some of the board members concerning this spring Round-Up:

*Says Dean Arno Nowotny:* "I heartily approve this expansion plan, especially for chapters that are low in personnel. It should be presented to the chapters so there will not be any intimation of lack of cooperation for those who do not reach their quotas."

*Says Dr. M. C. Hayes:* "We have started our membership expansion already in Eta Chapter and will be glad to fall in line with the national plan."

*Says Dr. Edwin C. Johnson:* "These goals are not too high and certainly they would greatly strengthen our chapters."

*Says Dr. Ray O. Wyland:* "I am strongly in favor of the expansion drive for a thousand new members. Let's bend every effort to it, and by all means let every chapter which makes a satisfactory showing receive a plaque of recognition of this achievement."

*Says Brother James P. Fitch:* "Let's have it. We must grow or die."

*Says Brother Frank R. Horton:* "The more students who become members, the more will be influenced by the ideals of the fraternity and the more will have an opportunity to render a service."

*Says Dr. Louis H. Renfrow:* "I am in full accord with the plan of this expansion movement and will give my full support to it."

*Says Prof. Kent D. Shaffer:* "I am glad to report that the Carnegie Tech chapter has already started plans to make a drive for new members. Let's caution all chapters that quality should far outweigh quantity alone. Let's go to it."

*Says Dr. Lester I. Tavel:* "I feel that the goal of 1000 new men in Alpha Phi Omega can and will be reached. Then with the new chapters we are now installing, I believe we will bring in at least 1500 new members in APO during the school year 1939-40."

*Says Brother C. M. Finnell:* "It's a good plan. I suggest periodic mimeographed reports be sent to all chapters about the progress of the drive."

# Nation-Wide Round-Up to Brand 1000 Mavericks

**The APO Brand of Service to be Stamped Across the  
Hearts of Hundreds of New Members in Every  
Section of the United States**

There's a great time ahead! In the first nation-wide expansion effort in the history of Alpha Phi Omega, your National Executive Board has launched a membership Round-Up to extend from March 15 to June 10, 1939. In this important twelve-week period, the chapters have been asked to initiate a total of one thousand new active members in Alpha Phi Omega, to effect a 35% increase in the active membership of our fraternity.

The delegates at the National Convention in St. Louis, during the past Christmas holidays, recognized that adequate man-power is the first requisite for the success of Alpha Phi Omega. In many chapters at the present time the energies of the active members and advisors are being dissipated because of operating under the handicap of small numbers. In view of this, the national leaders of the fraternity have called upon every chapter to take part in an expansion program to increase the serviceability of Alpha Phi Omega on every campus.

**The Theme of this Round-up is  
INCREASED MAN-POWER MEANS INCREASED SERVICE POWER**

**The Goal is  
ONE THOUSAND NEWLY-BRANDED APO's BY JUNE 10**

The support and cooperation of every member of every chapter in the fraternity is essential to the success of this expansion effort. Every chapter should give a full measure of devotion to this program.

### The "Brand of Success"

Our Honorary National President, Walter W. Head of Alpha Omicron Chapter, has graciously offered to present a beautiful plaque appropriately inscribed to every chapter which reaches its quota of new members. President Head in his travels over America confers with countless young men of high school and college age and has found them clamoring to be a part of our service organization when told of our program and personnel. He frequently comes into contact with our various chapters and sees their need of greater man-power, and he has wholeheartedly joined in our efforts to add 1000 new active members before the close of this school year.



### Ride Those Mavericks Down

The phraseology of the western range is being used to describe the functions and objectives of our national expansion program. For the sake of friendly sectional rivalry and for expediency in reaching our goal, seven "Ranches" have been created, with seven tried and true cowpunchers to serve as Ranch Bosses. Each chapter is a range on one of the seven ranches, with the chapter president serving as Range Foreman. Each range has a quota of mavericks to be branded in this great Round-Up.

### Meet The Ranch Bosses

Bob Kniffin, that enthusiastic leader of Alpha Rho Chapter, has become "Buckin' Bob," boss of the Bar SW Ranch in the great southwest, and it will be up to this lanky ranch boss to lead his rancho in lassoing, hog-tying, and brandin' all the mavericks he can rope or rustle.

"Dead-Eye Hank" Howison (Tau Chapter) will be sizzlin' the good ol' fresh meat of yearlin's down on the Triangle SE Ranch of southeast U. S. A.

"Two-Gun Joe" Green (Beta Iota Chapter) is whoopin' 'er up on the Circle E in the east (yeah, an' that ain't no dude ranch, either).

"Double-Barrel Bill" Parks (Alpha Upsilon Chapter) is practicin' some plain and fancy target practice to make the tophands of the Square MW dance a bit on the ol' midwestern.

"Smokey Joe" Beasley of Alpha Omega Chapter (ask him how he got his name, boys) is enlargin' the corrals of the great central west an' gittin' ready for big action.

"Ride 'Em Al" Roberts (Beta Theta Chapter) is makin' his brags for the Bar N Ranch in the north.

"Brandin' Gene" Zechmeister (Alpha Kappa Chapter) of the Circle W already has his hosses a-pluggin' and rarin' to go an' claims he is tougher than hoss-leather himself. Here's hopin' the tophands on each range are gittin' their cowpunchers on the job pronto, fer there's big doin's ahead.

### Foremen Ridin' High

The chapter presidents are doin' plenty of real ridin' as range foremen. Every one of them is in the saddle, wearin' his boots and spurs, headin' up the big doin's on his chapter range.



Clear 'cross the land, wherever the brand of APO is known, the range foremen have rallied all tophands and cowpunchers in sight to hit the trail to round up a full corral of mavericks and make ready fer the brandin'.

Range foremen, leaders of their chapters, recognize the need for greater man-power to produce greater serviceability in every chapter of Alpha Phi Omega. They have all entered enthusiastically into APO's first National Membership Round-Up and are determined that their range quota and national goal will be reached by June 10.

Turn this page to see the organization set-up of the Round-Up, and set out to do your part!

### Suggestions For The Round-Up

1. Meetings of your Executive Committee (chapter officers and advisors) should be held frequently during the next twelve weeks to give proper leadership to your expansion efforts.
2. Your entire chapter should temporarily become a huge membership committee, with "teams" within the committee, to make sure that every member works diligently in rounding up the mavericks to be branded.
3. Plan to hold a formal pledging ceremony at **every** chapter meeting, to give recognition to new men. Send the pledgeship applications promptly to the National Office, so your Executive Board may keep in close touch with the Round-Up activities on your chapter range.
4. Plan to hold more than one initiation ceremony for your new members. Don't wait until the closing weeks of school for your induction services—Initiate your first group in April and then have one or more additional ceremonies in May to complete your quota. Each time the ritualistic work is conducted it will serve to further strengthen your chapter.
5. Seek quality in your new members, not quantity alone.
6. Catch the spirit of the national program. Do your part in achieving the goal of 1000 new active members of Alpha Phi Omega by June 10.

### Regulations For The Round-Up

1. Pledges who were in your chapter before March 15 may be counted toward your quota, as well as pledges secured during the twelve weeks period of the Round-Up, when properly initiated and registered.
2. All new members, to be counted on your chapter quota in the Round-Up, must be properly registered, with their applications and fees delivered to the National Office by June 10, 1939.
3. Frequent bulletins will be issued from the National Office to keep you informed of the progress of every chapter in this expansion program.



# The Round-Up Boss Says . . .

Cast an eye below. See which Ranch your chapter range is in; "Get acquainted" with your Ranch Boss. Notice the quota of mavericks to be branded on your range by June 10.

## BAR SW RANCH (Southwestern)

"Buckin' Bob" Kniffin, Ranch Boss

S. M. U. Range (Ross Fulton, Foreman)	Quota 20 Newly Branded APO's
East Texas Range (Lloyd Boze, Foreman)	Quota 20 Newly Branded APO's
Louisiana State Range (Lyman Rhodes, Foreman)	Quota 15 Newly Branded APO's
Tulsa Range (Keith W. Green, Foreman)	Quota 10 Newly Branded APO's
Tahlequah Range (Durward Carney, Foreman)	Quota 10 Newly Branded APO's
Texas Range (Howard Martin, Foreman)	Quota 10 Newly Branded APO's

Ranch Quota 85 Newly Branded APO's

## TRIANGLE SE RANCH (Southeastern)

"Dead-Eye Hank" Howison, Ranch Boss

Florida Range (Robert Parks, Foreman)	Quota 20 Newly Branded APO's
Miami Range (Raymond Reiner, Foreman)	Quota 15 Newly Branded APO's
Alabama Tech Range (James Irvine, Foreman)	Quota 20 Newly Branded APO's
Georgia Range (Slaton Jones, Foreman)	Quota 15 Newly Branded APO's
North Carolina Range (Clen Humphrey, Foreman)	Quota 10 Newly Branded APO's

Ranch Quota 80 Newly Branded APO's

## CIRCLE E RANCH (Eastern)

"Two-Gun Joe" Green, Ranch Boss

N. Y. U. Range (Harry Cohn, Foreman)	Quota 25 Newly Branded APO's
Syracuse Range (Robert Brown, Foreman)	Quota 30 Newly Branded APO's
Cornell Range (Robert Wiggans, Foreman)	Quota 20 Newly Branded APO's
M. I. T. Range (Norman Scott, Foreman)	Quota 20 Newly Branded APO's
Lehigh Range (Robert Easton, Foreman)	Quota 15 Newly Branded APO's
Lafayette Range (Robert Dalrymple, Foreman)	Quota 15 Newly Branded APO's
Penn State Range (John Keating, Foreman)	Quota 15 Newly Branded APO's
Carnegie Tech Range (Sidney Hantmann, Foreman)	Quota 18 Newly Branded APO's

Ranch Quota 158 Newly Branded APO's

## SQUARE MW RANCH (Midwestern)

"Double-Barrel Bill" Parks, Ranch Boss

DePauw Range (Jack Armstrong, Foreman)	Quota 20 Newly Branded APO's
Indiana Range (John Jay, Foreman)	Quota 25 Newly Branded APO's
Purdue Range (Richard Stradling, Foreman)	Quota 20 Newly Branded APO's
Butler Range (Robert Kershaw, Foreman)	Quota 20 Newly Branded APO's
Ohio State Range (William Goslin, Foreman)	Quota 15 Newly Branded APO's
Illinois Range (Carl B. Mast, Foreman)	Quota 18 Newly Branded APO's
Indiana STC Range (Otto E. Toelle, Foreman)	Quota 10 Newly Branded APO's

Ranch Quota 128 Newly Branded APO's

## BAR N RANCH (Northern)

"Ride 'em Al" Roberts, Ranch Boss

Wisconsin Range (Robert Lovell, Foreman)	Quota 20 Newly Branded APO's
Milwaukee Range (Harold Shapiro, Foreman)	Quota 20 Newly Branded APO's
St. Norbert Range (Anthony Chmielewski, Foreman)	Quota 20 Newly Branded APO's
Central Y Range (Claire Nesmith, Foreman)	Quota 15 Newly Branded APO's
DeKalb Range (Alfred Kupferberg, Foreman)	Quota 30 Newly Branded APO's
Iowa Range (William Moershell, Foreman)	Quota 15 Newly Branded APO's
Iowa State Range (Otis B. Miller, Foreman)	Quota 15 Newly Branded APO's
Drake Range (Paul Stover, Foreman)	Quota 15 Newly Branded APO's
Iowa STC Range (Everett Alton, Foreman)	Quota 15 Newly Branded APO's
Michigan State Range (Eliot Miles, Foreman)	Quota 20 Newly Branded APO's
North Dakota State Range (Carlisle Lundsten, Foreman)	Quota 15 Newly Branded APO's

Ranch Quota 200 Newly Branded APO's



**TRIANGLE CW RANCH (Central West)****"Smokey Joe" Beasley, Ranch Boss**

Kirksville C. O. S. Range (Eugene Hopkins, Foreman)	Quota 30 Newly Branded APO's
K. C. U. Range (Bernard Koehler, Foreman)	Quota 20 Newly Branded APO's
Park Range (Merle Irwin, Foreman)	Quota 15 Newly Branded APO's
William Jewell Range (John Edmund, Foreman)	Quota 15 Newly Branded APO's
Nebraska Range (Aulton Roland, Foreman)	Quota 15 Newly Branded APO's
Omaha Range (Robert Crosby, Foreman)	Quota 18 Newly Branded APO's
Kansas State Range (Earl Certain, Foreman)	Quota 15 Newly Branded APO's
K. U. Range (Gordon Brigham, Foreman)	Quota 20 Newly Branded APO's
Wichita Range (James Hammond, Foreman)	Quota 20 Newly Branded APO's
Missouri Range (Stewart Swing, Foreman)	Quota 20 Newly Branded APO's
Washington Range (Judson Green, Foreman)	Quota 20 Newly Branded APO's
Springfield Range (Robert Stewart, Foreman)	Quota 10 Newly Branded APO's
Rolla Range (Leroy Allen, Foreman)	Quota 10 Newly Branded APO's
Westminster Range (Jack Eairley, Foreman)	Quota 10 Newly Branded APO's
Warrensburg Range (William Brenton, Foreman)	Quota 10 Newly Branded APO's
Kirksville STC Range (George Friedmeyer, Foreman)	Quota 15 Newly Branded APO's

Ranch Quota 263 Newly Branded APO's

**CIRCLE W RANCH (Western)****"Brandin' Gene" Zechmeister, Ranch Boss**

So. California Range (William Quinn, Foreman)	Quota 18 Newly Branded APO's
San Diego Range (Bower Forbes, Foreman)	Quota 18 Newly Branded APO's
Washington State Range (Chester Peach, Foreman)	Quota 20 Newly Branded APO's
Santa Barbara Range (George Guntermann, Foreman)	Quota 15 Newly Branded APO's
U. C. L. A. Range (Basil Frank, Foreman)	Quota 15 Newly Branded APO's

Ranch Quota 86 Newly Branded APO's

**TOTAL NATIONAL RANCH QUOTA - 1000 NEWLY BRANDED APO's BY JUNE 10, 1939****Walter W. Head**

*President of the National Council,  
Boy Scouts of America*

... He serves as Round-Up Boss and will award a beautiful Alpha Phi Omega Plaque to every Chapter which reaches its quota in this national achievement program.

Ya see, there's seven ranches, with a whole gang of ranges makin' up each ranch. The fellers that has been lookin' over the sitchyachun has done a sight of workin' to figger how many mavericks we orter git branded on each range and how many from each ranch to make the whole big Round-Up. They had to rightly take keer of so many things, like the present size of each herd, how long the herd's been feedin' on the grass, the size of the range, how the critters been doin' through the drouth and larkspur poisonin', et cetera.

Boys, they shore sweat blood in the figgerin', and on these pages ya see the results - ya see the quotas of newly-branded APO's to be brung in on each range and on each ranch.

Every Ranch Boss and every Range Foreman will be whoopin' 'er up to make his quota by the close of this great Round-Up. They need the best ridin' of every top-hand and every cowpuncher to make the Round-Up a success.

There ain't no brand like the brand that's wrote across your heart. Let's git in the saddle an' pound leather 'til we kin celebrate with fireworks that will blaze our motto of "Leadership, Friendship and Service," clear across the sky from Maine to Californy.

Will your chapter accept the challenge? Are you willing to give the time and effort in your range that is necessary to brand the mavericks that are available on your campus? One thing sure - we got to get the mavericks while the spring feedin' is good, before they go back up into the hills fer the summer grass. Hows about goin' after 'em, pardners?

**"KEEP THOSE BRANDIN' IRONS HOT"**



# Seventh National Convention Opens Way to a Greater Alpha Phi Omega

## Delegates Attending St. Louis Meeting Study Means of Increasing the Service Activities and Expanding the Membership of the Fraternity

The largest assembly of Alpha Phi Omega men in the history of the fraternity convened in the DeSoto Hotel, St. Louis, Missouri, December 28 and 29, 1938. In addition to its record attendance, this seventh biennial National Convention topped all previous meetings in good fellowship and in consecration to the important task of enlarging the service program and extending the membership of the fraternity.

Delegates came from all sections of the United States. The 274 chapter representatives traveled 88,961 miles (one way) to attend the convention. Twice as many chapters were represented than at any previous convention, with fifty-one chapters having delegates present.

This fact alone gives a splendid indication of the growth which has been made in Alpha Phi Omega and the spirit which has come to permeate our fraternity during the past two years.

The chapters represented were:

Alpha	Alpha Gamma	Beta Alpha
Delta	Alpha Delta	Beta Beta
Epsilon	Alpha Eta	Beta Gamma
Eta	Alpha Theta	Beta Delta
Iota	Alpha Kappa	Beta Epsilon
Kappa	Alpha Lambda	Beta Eta
Lambda	Alpha Mu	Beta Theta
Mu	Alpha Nu	Beta Iota
Xi	Alpha Xi	Beta Kappa
Omicron	Alpha Omicron	Beta Lambda
Pi	Alpha Rho	Beta Mu
Rho	Alpha Sigma	Beta Nu
Tau	Alpha Tau	Beta Xi
Upsilon	Alpha Upsilon	Beta Omicron
Phi	Alpha Phi	Beta Pi
Omega	Alpha Chi	Beta Rho
Alpha Alpha	Alpha Omega	Beta Tau

The members of the National Executive Board present were:

H. Roe Bartle.....	National President
Sidney B. North.....	National Secretary
Dr. Edwin C. Johnson.....	National Treasurer
T. W. Lacy.....	National Field Representative
Carl S. Bauman.....	Dr. M. C. Hayes
George H. Charao.....	Dr. Louis H. Renfrow
Fred G. Davie.....	Prof. A. L. Thomas
C. M. Finnell.....	Dr. Ray O. Wyland

### The Opening Session

National President H. Roe Bartle presided, and the invocation was given by Brother Billy Bray of Alpha Omicron Chapter.

### Re-elected



H. Roe Bartle

The St. Louis Convention gave enthusiastic recognition to the forceful leadership of this good Brother by electing him to his fifth term as National President of Alpha Phi Omega.

Greetings from the host chapter (Alpha Phi of Washington University) were expressed by Brother Judson Green, president. Greetings from the city of St. Louis and from the St. Louis Council were presented by Col. H. D. McBride, veteran Scouter and honorary member of Alpha Phi Chapter. Responses for the fraternity were given by Brothers Eugene Zechmeister, president of Alpha Kappa Chapter; Alfred Kupferberg, president of Eta Chapter; Joseph Green, president of Beta Iota Chapter, and Brother Bob Kniffin, president of Alpha Rho Chapter.

The formal report of the National Secretary was presented by Brother Sidney B. North, covering the progress of the fraternity during the previous two-year period. (Copies of this report may be secured upon request to the National Office.)

President Bartle outlined the responsibilities of the National Convention as follows: First, to perfect the legislation to govern the fraternity until the next convention, second, to provide training for chapter leaders, and third, to provide additional inspiration for the fraternity program as a whole.

The keynote address of the convention was presented by Brother Bedford Furr, past president of Alpha Omicron Chapter. His words of wisdom served to stimulate the thinking of the delegates and to give everyone a broader visualization of the future potentialities of Alpha Phi Omega.

### Four Petitions Approved.

Petitions for new chapters of Alpha Phi Omega at the University of Arkansas, Washburn College, Texas Tech and the University of Tulsa, which were received in the National Office just prior to the convention, were presented for action. All of the new groups were unanimously approved and their representatives were allowed active participation in the convention.

### Thirteen Leadership Groups

To offer an opportunity for the chapter officers, advisors and committee chairmen present at the convention to enter into intimate discussion about the particular problems of their offices, President Bartle announced thirteen groups as follows:

Presidents.....	H. Roe Bartle (Iota), chairman
Vice-Presidents.....	Dr. Louis H. Renfrow (Alpha Phi) chairman
Secretaries.....	Sidney B. North (Pi), chairman
Treasurers.....	Dr. Edwin C. Johnson (Omicron) chairman
Historians.....	Prof. A. L. Thomas (Delta) chairman
Faculty Advisors.....	Dr. M. C. Hayes (Eta) chairman



Scouting Advisors.....	A. N. Ekstrand (Beta Theta) chairman
Alumni Secretaries.....	George M. Dean (Eta) chairman
Membership Committeemen.....	T. W. Lacy (Lambda) chairman
Program and Publicity Committeemen.....	George H. Charno (Alpha Eta) chairman
Campus Projects Committeemen.....	Dean Arno Nowotny (Alpha Rho) chairman
Community Projects Committeemen.....	Dr. Ray O. Wyland (Alpha) chairman
Fellowship Committeemen.....	C. M. Finnell (Alpha Alpha) chairman

These Leadership Groups held their first sessions for a period of forty-five minutes just prior to the first noon-day luncheon of the convention.

### LUNCHEON SESSION

December 28

The National President presided at the luncheon. Rev. L. A. V. DeCleene, senior faculty advisor of Alpha Nu Chapter, St. Norbert College, delivered the invocation.

Two inspiring addresses were delivered at the luncheon session.

Dean Arno Nowotny of Alpha Rho Chapter, University of Texas, spoke on the subject, "From Nothing to Something or the Romantic Growth of Alpha Rho." The dean presented a very interesting and challenging story of how a weak and struggling chapter made a phenomenal growth because of the will and determination of its members. Dean Nowotny's keen analysis of the needs and problems of Alpha Phi Omega proved a source of value to the entire convention assembly.

The second luncheon address was by Brother Frank Braden, honorary member of Rho Chapter, University of North Carolina, and assistant director of Senior Scouting. His subject was "Alpha Phi Omega and Senior Scouting." He stressed the need of keeping the older boys in Scouting and gave many interesting examples of how Scouting has helped shape the course of young men's lives.

President Bartle then announced a plan for program discussion, in which five groups were appointed. They were as follows:

Groups	Chairmen	Advisors
A	Roy Shapiro (Upsilon)	Dr. M. C. Hayes (Eta)
B	Eric Wadleigh (Alpha Gamma)	Prof. A. L. Thomas (Delta)
C	Joseph Green (Beta Iota)	Prof. Kent D. Shaffer (Kappa)
D	Bob Kniffin (Alpha Rho)	Lester B. Miller (Beta Eta)
E	Arthur Matheson (Alpha Alpha)	Dean A. C. Zumbrunnen (Alpha Omicron)

Upon adjournment of the luncheon session, the officers groups held their second session.

### AFTERNOON SESSION

December 28

In the spirit of brotherhood and reverence, the convention delegates paid tribute to the deceased members of the fraternity. Dr. Edwin C. Johnson conducted the service in memory of the following brothers:

Dean B. A. Tolbert (Tau)  
 Russell Helm (Alpha Tau)  
 Carl Orgo (Beta Gamma)  
 Neil Baxter (Iota)  
 Robert D. Island (Alpha Eta)  
 John B. Wentz (Xi)

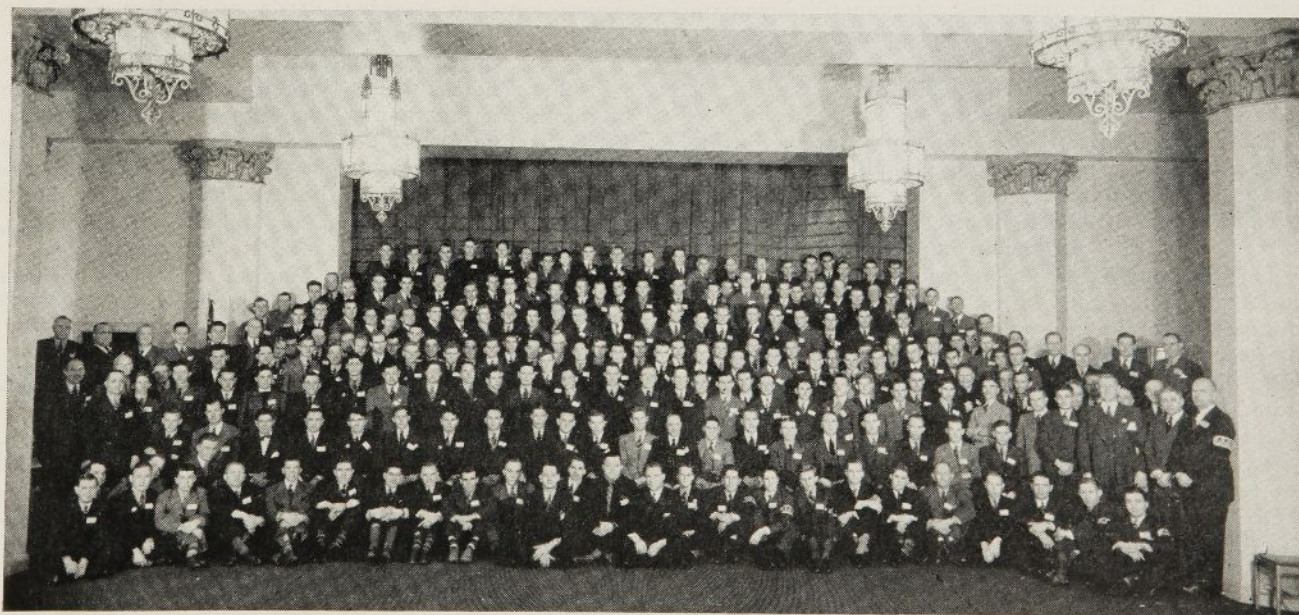
Immediately following the memorial service chapters were assigned by the National President to the five program discussion groups, and the first group sessions were then conducted under the leadership of the chairmen and advisors.

### BANQUET SESSION

December 28

Brother George H. Charno served as toastmaster at the banquet. The invocation was given by Charles H. Mills, activities director of the St. Louis Council, Boy Scouts of America.

During the banquet, a contest was conducted for new Alpha Phi Omega songs, with Alpha Tau, Beta Eta and Eta Chapters competing. Eta chapter was pro-



These 274 Chapter Representatives from all Sections of the United States Traveled a total of 88,961 miles (one way) to attend Alpha Phi Omega's Seventh National Convention in St. Louis, December 28 and 29, 1938



claimed the winner and was presented the plaque award.

Three special numbers arranged by the banquet committee of the host chapter were greatly enjoyed by the delegates. They were "The Coeds," a trio from Washington University; the "Bottle Caliope" of Troop 308, and the "Tunaphone Band" of Troop 98, St. Louis Council.

"Keeping the College Campuses of America American" was the subject of the banquet address of Homer L. Chaillaux, Director of the National Americanism Commission of the American Legion. Stirring facts were presented in this address which called upon Alpha Phi Omega to be the guardian of American principles on college and university campuses.

Dr. Ray O. Wyland, National Director of Education and Relationships of the Boy Scouts of America, challenged the fraternity's interest in his address on "Vision for the Future." Dr. Wyland, a member of our mother chapter, related some of the experiences of the early days of Alpha Phi Omega and presented a word picture of our potentialities for growth and service in the years to come.

Following the banquet program, President Bartle appointed five legislative committees to study five distinct phases of the fraternity procedure—Extension Committee, with Dr. M. C. Hayes as chairman; Ritual Committee, with Dr. Edwin C. Johnson as Chairman; Constitution and By-Laws Committee, with George H. Charno as chairman; Chapter Administration Committee, with C. M. Finnell as chairman, and Aims and Objectives Committee, with Dr. Ray O. Wyland as chairman. These committees convened immediately and their deliberations extended until the small hours of the morning.

### MORNING SESSION

December 29

The morning session was called to order by President Bartle at 9:30. Brother C. M. Finnell gave the invocation. Upon proper motion, the convention called for the reports of the legislative committees.

#### Extension Report

This committee named extension as one of the major problems of the convention and it recommended that every chapter have a committee on new chapter extension in addition to its regular membership committee. The committee requested every chapter in the fraternity to assume the responsibility of bringing in at least one new chapter before the close of this school year.

#### Financial Report

Dr. Edwin C. Johnson, National Treasurer, presented the financial report of the national fraternity. (Copies of this report may be secured upon request to the National Office). Following the report there was a lengthy discussion about the financial status of the fraternity and means of placing the fraternity on a more sound basis.



To Eta For 1938

This "Wallace O. Lee" Trophy, symbolic of the highest achievement among the chapters of Alpha Phi Omega was awarded to Eta Chapter of Northern Illinois State Teachers college for the year 1938. Forty-seven members of Eta Chapter attended the St. Louis Convention, the largest single chapter delegation in the history of the fraternity.

### Constitution and By-Laws Report

This committee presented sixteen proposals to the convention for changes in the rules of the fraternity as stated in the National Constitution and By-Laws. Twelve of the proposals were passed by the votes of the official delegates and were adopted. These changes have been embodied in the new printing of the National Constitution and By-Laws in the 1939 edition of the Manual of Service.

### LUNCHEON SESSION

December 29

President Bartle officiated at this session, and Dean A. C. Zumbrunnen, faculty advisor of Alpha Omicron Chapter, Southern Methodist University, delivered the invocation.

The "Wallace O. Lee Achievement Trophy" was presented to Eta Chapter of Northern Illinois State Teachers College, in recognition of outstanding service in 1938. The presentation was made on behalf of the National Executive Board by Brother Fred G. Davie (Epsilon).

"Elements of Leadership" was the subject of the luncheon address by Brother Harold F. Pote, National Director of Personnel, Boy Scouts of America. He discussed the fundamentals of personnel direction and cited the advantage of men identifying themselves with a worthwhile cause. Brother Pote's address was filled with interest for the convention delegates and it contained many valuable thoughts to be carried away and put into practice in the chapters of the fraternity.

Dr. Wyland, speaking and acting on behalf of the National Executive Board presented a beautifully inscribed gavel to President Bartle, as a token of esteem for his leadership in the fraternity.

### Chapter Administration Report

Brother Thomas Wise, serving as secretary of the Chapter Administration Committee, read the report. This committee presented a Standard Chapter Constitution and By-Laws which is to be published and distributed to all chapters to be used as a guide in drafting and adopting chapter regulations. In addition, this committee suggested several changes in the administration section of the Manual of Service. These were adopted and have been embodied in the 1939 edition of the manual.

### Aims and Objectives Report

The report of this committee was read by Brother Gerald Ralls (Alpha Mu), secretary. The recommendations were divided into four classifications: First, those having to do with general policy; second, national projects and suggestions; third, program suggestions that enrich the fraternal fellowship; and fourth program suggestions as to campus and community projects. The recommendations were adopted by the convention and have been embodied in the program section of the new Manual of Service.

### Ritual Report

The report of the Ritual Committee was read by Sec-



retary Harvey Stevens (Upsilon). Recommendations were presented for lengthening both the pledge and initiation ritual, the work to be done by a special committee appointed by the National Executive Board to be ready to present its suggestions at the 1940 convention.

### Election of Officers

The report of the nominating committee was read by Secretary Joseph Green (Beta Iota). The report was approved unanimously and the following officers and executive board members were elected and installed:

Honorary National President.....	Walter W. Head
National President.....	H. Roe Bartle
National First Vice-President.....	William J. Campbell
National Second Vice-President.....	Dr. M. C. Hayes
National Treasurer.....	Dr. Edwin C. Johnson

#### Executive Board Membership:

Dr. John S. Coie (Alpha Xi) for four years to fill the unexpired term of Rear Admiral W. T. Cluverius (resigned).  
 Professor H. H. Germond (Tau) for four years to fill the unexpired term of Dr. M. C. Hayes (elected to vice-presidency).  
 Dean Arno Nowotny (Alpha Rho) for six years.  
 Harold F. Pote (Beta Iota) for six years.  
 Professor Kent D. Shaffer (Kappa) for two years to fill the unexpired term of Raymond O. Davies (resigned).  
 Dr. Lester I. Tavel (Alpha Omega) for six years.

(Photographs and stories of the new members of the National Executive Board will appear in the May issue of TORCH AND TREFOIL).

The convention reconfirmed the board membership of the following brothers:

Dean Francis M. Bacon  
 Carl S. Bauman  
 George H. Charno  
 Fred G. Davie  
 C. M. Finnell

James P. Fitch  
 Frank R. Horton  
 Dr. Louis H. Renfrow  
 Prof. A. L. Thomas  
 Dr. Ray O. Wyland

The meeting was adjourned at 5:30 p. m. December 29, by President Bartle.

For a convention of infinite value, we are indebted to the convention speakers, the members of the legislative committee, the members of the discussion groups and the members of the National Executive Board. For their untiring aid in planning and conducting the convention and for the hospitality enjoyed throughout the meeting, we are indebted to our host chapter, Alpha Phi of Washington University.

The 1938 National Convention of Alpha Phi Omega was proclaimed the most successful and most vital meeting in the fraternity's history. It exemplified the fact that men are willing to fight hard for the principles of Leadership, Friendship and Service.

## Fingerprinting for the Civil Identification Files of F. B. I.

### Five Chapters Conduct Fingerprinting of Students and Faculty in Cooperation With Federal Authorities

In the past two months, fingerprinting campaigns have been conducted on five college and university campuses under the leadership of Alpha Phi Omega. Alpha Alpha Chapter at Illinois, Phi Chapter at Syracuse, Xi Chapter at Iowa State, Alpha Theta Chapter at Omaha, and Beta Kappa Chapter at Central Missouri Teachers furnished the opportunity on their campuses for students and faculty members, and for townspeople as well, to record their fingerprints in the civil identification files of the Federal Bureau of Identification.

In each instance the F. B. I. and the state bureaus of identification have cooperated by supplying the necessary materials for the fingerprinting activities, and have furnished the services of fingerprinting experts to assist in conducting the campus campaigns.

The first chapter of Alpha Phi Omega to conduct a campus fingerprinting campaign was Alpha Sigma at the University of Nebraska. Their project was carried out in the spring of 1938. Since

the story of this Nebraska project appeared in the TORCH AND TREFOIL and materials and publicity used in connection with it were displayed at the St. Louis Convention, interest in fingerprinting has spread rapidly among other chapters of the fraternity.

Mr. J. Edgar Hoover, director of the Federal Bureau of Investigation, took a personal interest in the Nebraska campaign last spring, and in a telegram to Alpha Sigma Chapter he said, "It is most gratifying to know that you have completed arrangements to present the students of the university with the opportunity to have their fingerprint impressions recorded in the civil identification files of the F. B. I. I believe every law abiding American citizen should have this opportunity to protect his family and friends and may I offer congratulations upon the program which you are inaugurating."

Presented below are the interesting accounts from the several chapters about the recent fingerprinting campaigns on five campuses:

#### FINGERPRINTING AT ILLINOIS

By Jack Simon, Secretary Alpha Alpha Chapter

Conducting our fingerprinting campaign for three days between semesters, we averaged five hundred prints a day. We found that knowledge of the Nebraska campaign made this project much easier for us. Their article in the October, 1938 issue of TORCH AND TREFOIL and our conversation with their delegates at the St. Louis Convention were very valuable. With our experience this year, we will be in position to carry out a more extensive campaign in the future, and render this service to a much larger percentage of the 10,000 students at Illinois.

The Illinois state bureau of investigation and identification furnished all of the materials necessary, and sent their fingerprinting expert to the campus for the full three days of the campaign.

The Chicago Tribune published an article about the project, which included information about the chapter as a whole. The Chicago Daily Times published six pictures showing the fingerprinting activity in progress. The Daily Illini also gave excellent publicity to the campaign. Among the many persons fingerprinted was Brother Walter W. Head, President of the National Council, Boy Scouts of America, and Honorary National President of Alpha Phi Omega.

As a counterpart to the campus project, we are now conducting a council project in which we are giving classes in fingerprinting merit badge.



We expect to continue this campaign every year until we eventually are able to get practically every student in the university to record his prints.

We hope we have been able to accomplish a great deal of good by this campaign, and we know this project has been of inestimable value to our chapter in binding our membership closer together.

#### FINGERPRINTING AT SYRACUSE

*By Jack D. Felsing, Historian Phi Chapter*

We started on a small scale in our fingerprinting project, using the same methods as were employed at Nebraska last year. We fingerprinted students of the New York State College of Forestry at Syracuse University, and were pleased to find that our plan was met everywhere with utmost approval. The students responded splendidly to the voluntary plan and the chancellor publicly announced his support. The faculty backed us and the downtown newspapers as well as our campus papers helped us in gaining the necessary publicity.

The project was run smoothly and efficiently with the assistance of Mr. Frank J. Lilleyman, fingerprint clerk of the War Department.

We succeeded in getting four hundred prints. We now have the chancellor's approval to fingerprint the entire student body of the university at registration time next fall. This will involve fingerprinting six thousand students.

#### FINGERPRINTING AT IOWA STATE

*By H. Dale Peterson, Secretary Xi Chapter*

More than 1,200 students and faculty members were fingerprinted for the civil identification files in the first project of this kind ever to be conducted at Iowa State. Wayne Leffler, student fingerprint expert, assisted us in a major way in this campaign. Immediately following the campaign he appeared at an open meeting of the chapter and showed some slides which indicate how the prints are classified and handled in the files at Washington.

We plan to make this an annual project for the benefit of the approximately 2,500 new students who enter Iowa State each year.

Running concurrently with our campus campaign, the Junior Chamber of Commerce of Ames conducted a fingerprinting campaign for townspeople.

#### FINGERPRINTING AT OMAHA

*By Harold Hansen, Historian Alpha Theta Chapter*

We believe that our recent fingerprinting campaign is one of the most far-reaching projects Alpha Theta Chapter has ever sponsored. The prints taken may be of great value to the persons who recorded them and to their friends and relatives, in times when identity is otherwise unascertainable.

Dean Edgar Holt gave valuable support to our campaign and urged all campus organizations to cooperate.

We are hopeful of making this an annual project to give all new students who enter Omaha University the opportunity of placing their fingerprints in the civil identification files.

#### FINGERPRINTING AT CENTRAL MISSOURI TEACHERS

Brother John Ezzell directed the finger-

printing of students and faculty members at Central Missouri State Teachers College the last week in January. The project was sponsored by Beta Kappa Chapter of Alpha Phi Omega with the assistance of the federal bureau of investigation.

#### VALENTINE PARTY FOR CRIPPLED CHILDREN

Beta Eta Chapter at the University of Missouri entertained the crippled children at the Noyes Hospital in Columbia at a Valentine party, February 14. Gifts and refreshments and the program of fun were furnished by the chapter.

#### SCOUT CONVOCATION AT ALABAMA TECH

To promote further interest in Scouting and service activities among the students of Alabama Tech, Delta chapter of Alpha Phi Omega held a convocation on February 1 for all former Scouts on the campus. The executive cabinet excused all Scouts from classes during the meeting.

About 500 students attended the convocation and assisted in making plans for a state-wide Scout jamboree to be held on the campus this spring.

Brother Everett Brooks, past president of the chapter, presided at the meeting. Dr. Zebulon Judd, dean of the school of education, addressed the group, his theme being that Scouting activities promote good citizenship and friendly relations not only with citizens of the United States but all over the world.

Professor A. L. Thomas, senior faculty advisor of the chapter and member of the National Executive Board of Alpha Phi Omega, spoke on "Budgeting Time at College." A time budget booklet was presented to all present. (Copies of this booklet may be secured by any member of Alpha Phi Omega at small cost by addressing Professor Thomas at Auburn.)

The Scout Executive of the Montgomery Council, R. O. Lundquist, spoke on "Scouting as a Vocation" and other talks were made by Professor A. J. Robinson, Scoutmaster Frank Moseley and others.

Delta Chapter had on display at the meeting five trophies which are awarded annually to the freshmen winners in contests in fencing, tennis, rifle marksmanship, swimming and golf.

#### "TECHNIQUES OF SERVICE"

*By J. Bower Forbes, President Alpha Delta*

Alpha Delta Chapter at San Diego will serve as host, April 15 and 16, to all the other California chapters at a state-wide Alpha Phi Omega convention. "Techniques of Service" is the theme of the conference, and it is planned to have several speakers who will talk on the actual practical services that Alpha Phi Omega can do for the school, the community, and for Scouting.

The two days' activities will include a tour of the city and campus, a dinner, a breakfast and a general discussion meeting. At the discussion meeting, we intend to discuss topics brought up by the speakers and have reports by the presidents of the chapters about their activities.

#### DONATE INTERCOMMUNICATING SYSTEM

One of the most useful and practical gifts ever presented by a chapter of Alpha Phi Omega to its school is the new intercommunicating system which has been installed by Alpha Omega Chapter in the clinic at Kirksville College of Osteopathy and Surgery. Brother Herbert Clough, past president of the chapter, designed the apparatus and directed its installation.

The system can be used for two-way communication or for public addresses. It is most definitely advantageous to the doctors in the clinic. Seven stations are now functioning, and two more are soon to be added. Any two stations can communicate with one another.

If needs justify it, the chapter expects to enlarge the system in the future.

#### Blood Typing All Students

Alpha Omega Chapter recently made it possible for all students at K. C. O. S. to have their blood typed for the purpose of transfusion. The response was excellent and the records secured are valuable both to the individuals, to the college and to the local hospitals.

Material for the  
May Issue of

**TORCH AND TREFOIL**

will be gratefully received  
at the National Office.  
The deadline is May 1.



## SEVEN NEW CHAPTERS ENTER ALPHA PHI OMEGA

Since December 1, 1938, Seven New Chapters Have Been Installed In Alpha Phi Omega. Presented Here Are The Accounts Of Their Installation Ceremonies

### BETA LAMBDA CHAPTER AT INDIANA TEACHERS

New Chapter Installed at State Conference, with Four Chapters Participating

Delegates from Mu Chapter, Indiana University; Alpha Gamma Chapter, Purdue; Alpha Tau Chapter, Butler, and Alpha Upsilon Chapter, DePauw, assembled at Terre Haute, Indiana, December 18, 1938, for the first state-wide conference of Alpha Phi Omega.

One of the principal functions of the assembly was the installation of Beta Lambda Chapter at Indiana State Teachers College. Brother H. Roe Bartle, National President, presided at the installation and the ritualistic work was carried out by a joint degree team composed of members of all chapters in the State of Indiana.

The instigation of this new chapter came largely through the President of the college, Dr. Ralph N. Tirey. President Tirey became interested in Alpha Phi Omega while attending a convocation at DePauw University sponsored by Alpha Upsilon Chapter. Upon learning of the service program

conducted by Alpha Phi Omega at DePauw and on other campuses, he determined to have a chapter of this fraternity at Indiana State. He was assisted in a major way in bringing about the new chapter by Brother Howard R. Patton, Scout Executive of Terre Haute.

The officers installed to give leadership to Beta Lambda Chapter during its first term are:

Otto E. Toelle	President
Lloyd L. Williams	Vice-President
Edward J. Eames	Secretary
Harry W. McKain	Treasurer
Weir Richard Kirk	Historian
Frank R. Briggs	Alumni Secretary
Dr. David A. Glascock	Senior Faculty Advisor

The advisors of the new chapter include:

Harry E. Elder	Registrar
Ralph N. Tirey	President of the College
Waldo F. Mitchell	Prof. of Economics
William P. Allyn	Prof. of Zoology
J. J. Maehling	
Howard R. Patton	Scout Executive, Terre Haute

The service projects already completed indicate a very successful and valuable future for Beta Lambda Chapter.

In addition to the installation, the state conference program was devoted to reports from the several chapters, discussions of means of enlarging the benefits of Alpha Phi Omega on the several campuses

and plans for extending the fraternity to other schools in the state.

### BETA KAPPA CHAPTER INSTALLED

Alpha Phi Omega became an official part of the campus life of the Central Missouri State Teachers College, when twenty-eight students and seven advisors were installed as charter members of Beta Kappa Chapter on December 5, 1938.

Two national representatives were present and conducted the installation, Brother H. Roe Bartle, National President, and Brother George H. Charno, member of the National Executive Board. The degree team of Alpha Mu Chapter of William Jewell College conducted the ritualistic work.

The officers installed to serve Beta Kappa during its first term are:

William M. Brenton	President
Walter Landaker	Vice-President
William Barker	Secretary
Richard J. Winsborough	Treasurer
DeWard Earle	Historian
Henry Noll	Alumni Secretary
Paul Swafford	Sentinel
Tom Scott	Senior Faculty Advisor

The advisors of the chapter, in addition to the Senior Faculty Advisor, are:

George W. Diemer	President of the College
Emmett E. Ellis	Associate Prof. of Mathematics
Noel B. Grinstead	Prof. of Industrial Arts
E. A. Cockefair	Professor of Biology
James Kirkpatrick	
Bruce Stonum	
Judge E. E. Kirkland	Field Scout Executive

Beta Kappa is off to a keen start and the members are thoroughly imbued with the spirit of Alpha Phi Omega. We may expect great things from this gang.

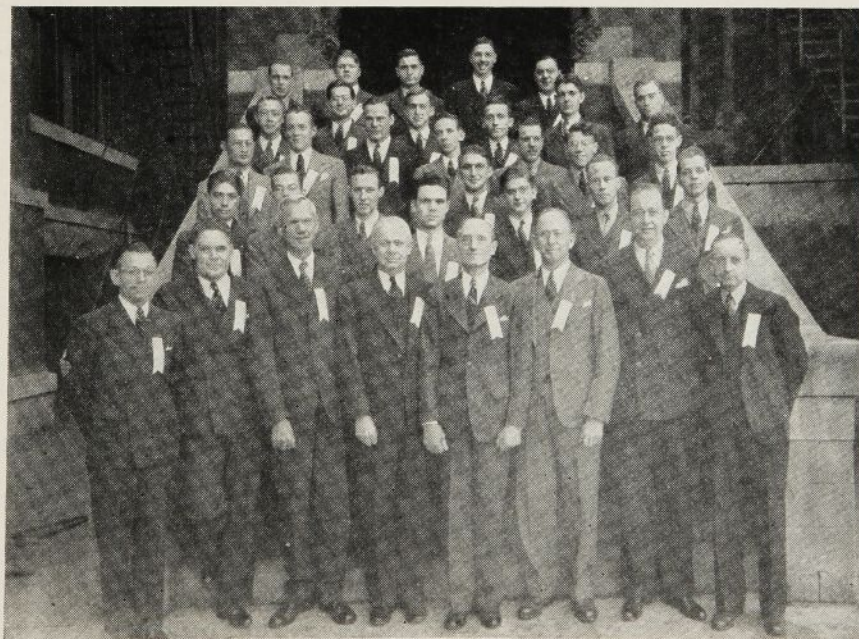
(A photograph of the charter membership of Beta Kappa Chapter, not available for this issue of TORCH AND TREFOIL, will be published in the May issue.)

### BETA MU CHAPTER INSTALLED

College President Becomes Honorary Chapter President

By Vaughn Burt, Historian

The first service organization on the campus of Southwest Missouri State Teachers College, Springfield, is Beta Mu Chapter of Alpha Phi



The Charter Membership of Beta Lambda Chapter of Indiana State Teachers College, Installed at the State Alpha Phi Omega Conference in Terre Haute, December 18, 1938.



Omega, installed January 19, 1939.

National President H. Roe Bartle conducted the installation with the degree team of Alpha Eta Chapter of the University of Kansas City performing the ritualistic ceremony.

The officers installed to serve the new chapter during its first term are:

Robert Stewart.....	President
William Sturdivant.....	Vice-President
Leonard Wood.....	Secretary
Robert Coonrod.....	Treasurer
Vaughn Burt.....	Historian
Earl Ditmars.....	Alumni Secretary
Robert Wright.....	Sergeant at Arms
Prof. James Shannon.....	Senior Faculty Advisor

The advisors of the chapter, in addition to Professor Shannon are:

Howard R. Blair.....	Director of Athletics
Ralph Voris.....	Professor of Biology
Walter Cralle.....	Professor of Sociology
L. V. Whitney.....	Associate Prof. of Physics
Allen C. Foster.....	Scout Executive, Springfield
Joseph Mueller.....	

A unique procedure in this meeting was the election and installation of the College President, Dr. Roy Ellis, as honorary president of the Alpha Phi Omega chapter.

Following the installation ceremonies, the chapter and its visitors attended a smoker given by the chapter president. From the smoker the group went to the Boy Scouts annual banquet at which our National President was the principal speaker.

The first project of Beta Mu Chapter was started during Christmas week. Although we had not yet been installed, the group cooperated with the Springfield Kiwanis Club in gathering toys for unfortunate children.



The First Alpha Phi Omega Chapter in Oklahoma, Beta Nu Chapter at Northeastern State Teachers College, Installed January 29, 1939.

Since our installation, our members have had their blood typed for the purpose of transfusions. In connection with the blood test, a physical examination was given each member and the results of these tests and examinations will be sent to all hospitals in the city.

### ALPHA PHI OMEGA ENTERS OKLAHOMA

#### Beta Nu Chapter Installed at Northeastern

Installation services for the first chapter of Alpha Phi Omega to be established in Oklahoma were held

January 29 at Northeastern State Teachers College, Tahlequah.

Brother H. Roe Bartle, National President, served as chief installing officer and was assisted by Brother Sidney B. North, National Secretary, and Brother T. W. (Bill) Lacy, National Field Representative.

In the installation of officers, Brother Durward Carney was handed the gavel as the first president of the new chapter. The other officers are:

Levi Muncy.....	Vice-President
Paul O. Shackelford.....	Secretary
L. L. Culver, Jr.....	Treasurer
Wilber M. Wilks.....	Historian
C. O. Cherry.....	Alumni Secretary
Prof. E. G. McCurtain.....	Senior Faculty Advisor

The advisors of Beta Nu Chapter, in addition to the Senior Faculty Advisor, are:

Prof. N. N. Duncan	
Henri Minski	
Dr. Vaud A. Travis	
Dr. Tully F. Watson	
W. J. Hiatt.....	Scout Executive
Lloyd Eberhardt.....	Asst. Scout Executive
Ulys M. Morgan.....	District Advancement Chairman

#### College President Speaks

Dr. John S. Vaughn, president of the college, praised the service work which had already been accomplished by the new chapter, and offered his support and cooperation in enlarging the chapter program.

The Tahlequah group, while not yet installed, gave leadership to the local Scouts in collecting old toys, repairing and distributing them to underprivileged children during the past Christmas season.



This Picture Shows the Charter Membership of Beta Mu Chapter of Southwest Missouri State Teachers College, Installed January 19, 1939.



## BETA OMICRON CHAPTER INSTALLED

### Alpha Eta Degree Team Conducts Initiation Ceremony

Twenty-five students and seven advisors at the Missouri School of Mines and Metallurgy, Rolla, took the obligation of Alpha Phi Omega on March 12, becoming Beta Omicron Chapter. The installation was conducted by National President H. Roe Bartle, with the assistance of Brother George H. Charno, member of the National Executive Board, Brother Sidney B. North, National Secretary, and the degree team of Alpha Eta Chapter.

The officers who had served the petitioning group throughout its preparation for Alpha Phi Omega membership and who were installed as the first officers of Beta Omicron Chapter are:

Leroy E. Allen	President
William J. Smothers	Vice-President
Kenneth B. Bly	Secretary
Jerome P. Dreeste	Treasurer
Edmund R. Butch	Historian
Richard G. Courtney	Alumni Secretary
Edward B. Kuhne	Sgt. at Arms
Vernon A. C. Gevecker	Senior Faculty Advisor

The advisors of the new chapter are:

Clifford H. Black	Instructor
F. E. Dennie	Associate Prof. of Mathematics
Karl K. Kershner	Prof. of Chemistry
William F. Powers	Assistant Professor
Allen C. Foster	Scout Executive
F. D. DeVaney	

### Director Member of Alpha Beta

Dr. William R. Chedsey, director of the Missouri School of Mines, was a faculty advisor of Alpha Beta Chapter at Penn State while a professor of engineering at that school. His previous experience in Alpha Phi Omega had a great deal to do with securing faculty approval for the formation of Beta Omicron.

During the ceremonies, Dr. Chedsey made the presentation of membership certificates to the brothers of the new chapter and he pledged his wholehearted support to making Alpha Phi Omega the outstanding service organization on the Rolla campus.

It's a most enthusiastic group of brothers who now carry the banner of Beta Omicron of Alpha Phi Omega and we may expect great things from this chapter.



In this picture are the Charter Members of Beta Omicron Chapter at the Missouri School of Mines and Metallurgy, Installed March 12, 1939.

## BETA XI CHAPTER AT WESTMINSTER

### Dean Sweazey Terms Chapter A Group of Assistant Deans

By Teddy Zickos, Historian

The administration building of Westminster College, Fulton, Missouri, was the scene of the installation of Beta Xi Chapter of Alpha Phi Omega, December 4, 1938. Thirty students composed the undergraduate membership of the new chapter.

Representatives were present and assisted in the installation from the chapters at William Jewell College, University of Kansas City and the University of Missouri. Members of these delegations served as a joint degree team in conducting the ritualistic ceremony, with National President H. Roe Bartle presiding over the installation.

Dean George B. Sweazey spoke briefly at the ceremonies, challenging the members of the new chapter to build a strong service program on the campus. Among his remarks the dean said, "I expect to have in this fraternity thirty helpers who will virtually be assistant deans and with them there isn't anything we cannot do here at Westminster."

The officers elected and installed to lead Beta Xi Chapter throughout its first term are:

Jack Eairley	President
George R. Sido	Vice-President
Roy Jackson, Jr.	Secretary
George Spence	Treasurer
Teddy Zickos	Historian
Harry Haeussler, Jr.	Alumni Secretary
Prof. W. M. Mitchell	Senior Faculty Advisor

The advisors, in addition to the Senior Faculty Advisor, are:

Prof. Leif C. Dahl	
Prof. J. B. Reeves	
Prof. J. Nathan Tidwell	
Prof. Chester S. Alexander	
Lester B. Miller	Scout Executive
Robert R. Miller	Field Executive

We of Beta Xi Chapter are proud of our affiliation with Alpha Phi Omega, and we will do everything within our power to keep the fraternity growing in service.

(Photograph of Beta Xi Chapter appears on page 14 of this issue)

## BETA PI CHAPTER AT TULSA

After more than a year of planning and preparation, the local service group of the University of Tulsa was installed January 30, 1939 as Beta Pi Chapter of Alpha Phi Omega. This period of preparation has resulted in a strong, well-organized chapter in which several valuable service projects have already been completed. The ceremonies were held at the University club in Tulsa, Oklahoma.

National President H. Roe Bartle and National Secretary Sidney B. North represented the national fraternity at the installation of this new chapter. The degree team of Alpha Eta Chapter of the University of Kansas City conducted the ritualistic work.

The officers who had guided the growth of the local group were installed as the first officers of the chapter. They are:

Keith W. Green	President
Clarence F. Ehlers	Vice-President
Cleo L. Bateman	Secretary
William B. Epperson, Jr.	Treasurer
Jack Gibbons	Historian

(Continued on page 14)





The Charter Members of Beta Xi Chapter Installed December 4, 1938 at Westminster College.

### BETA PI CHAPTER

(Continued from page 13)

Paul A. Schlosser..... Alumni Secretary  
Kiah Evans..... Sgt. at Arms  
Prof. E. H. Criswell..... Senior Faculty Advisor

The advisors of Beta Pi Chapter are:

R. M. Lovejoy..... Professor of Economics  
Leo A. Haak..... Professor of Sociology  
W. E. Morris, Jr..... Director of Personnel  
H. D. Chase..... Counselor of Men  
A. J. Lawrence..... Scout Executive  
J. E. Newman..... Asst. Scout Executive  
Edwin Monsell, Sr..... District Chairman

At the luncheon which followed the installation ceremonies Dr. C. I. Pontius, president of the University of Tulsa, made a short talk in which he stressed diligent work and initiative as the requisites to a successful chapter.

Mr. R. S. Ellison, President of the Tulsa Boy Scout Council, heartily welcomed the new chapter and expressed the belief that this new group would have exceptional opportunities for service in the community as well as on the university campus.

Since the installation Beta Pi Chapter has undertaken three new projects: Helping stage the annual Varsity Day at the university, selling tickets and taking charge of the physical arrangements of the stage for the night show, and handling one of the features of the show, assisting in revising the Merit Badge counselor list of the Tulsa Council, and making preparations for a university tennis tournament to be sponsored by the chapter in the month of April.

### SEVEN NEW CHAPTERS READY FOR INSTALLATION

The chapters and executive board members of our fraternity have voted their approval for the establishment of seven new chapters at the following schools:

University of Arkansas, Fayetteville.  
Texas Technological College, Lubbock.  
Washburn College, Topeka, Kansas.  
Northwest Missouri State Teachers College, Maryville.

Southwestern Louisiana Institute, Lafayette.  
Oklahoma City University, Oklahoma City.  
Southeast Missouri State Teachers College, Cape Girardeau.

The first three of these petitions were voted upon at the St. Louis Convention and were unanimously approved by the assembled delegates. The remaining petitions were acted upon by referendum.



The Charter Members of Beta Pi Chapter at the University of Tulsa, Installed January 30, 1939.

The installation of Beta Rho Chapter at Arkansas will be conducted April 2 and the installation of Beta Chi Chapter at Oklahoma City has been set for March 31. Both of these meetings will be under the personal supervision of the National President, H. Roe Bartle. Tentative plans are being made for the installations of the five remaining petitioning groups, but dates have not yet been announced.

### Petition From Washington

As this issue of TORCH AND TREFOIL is going to press a petition has been received for a chapter of Alpha Phi Omega at the University of Washington, Seattle. Information about this group is being promptly sent to all chapters and executive board members for approval.

### THIRD ANNUAL PING-PONG TOURNAMENT

Alpha Upsilon Chapter is now busy in conducting its third annual ping-pong tournament for mixed doubles. Twenty-five couples are expected to participate in the elimination contests. The entrance fee is only twenty cents a couple and the chapter gives two loving cups, one for each of the winning couple.

Plans are also under way for the third annual Leadership Conference to be sponsored on the DePauw University campus, April 29. This is a training meeting for the Green Bar Men of all troops in the Wabash Area Council. It has proved very successful and valuable in the past and is expected to be bigger and better this year.



## COMMITTEE SYSTEM REALLY WORKS IN KAPPA

*By Arthur Z. Hirsch, Jr., Historian*

Seven committees are at work on the spring projects of Kappa Chapter at Carnegie Tech. A special committee is preparing a caricature map, in colors, of the campus and surrounding territories, to be distributed to new students. Brother Ted DeLay is chairman of this committee. (Brother DeLay plans to furnish a sufficient supply of these maps to the National Office so that one may be sent to each chapter in the fraternity, to let them see the finished product.)

Brother William Squire heads a committee that is looking into the possibility of placing name plates on all trees on the Tech campus.

Brother Jack Wunderlick is chairman of the committee in charge of sponsoring a jamboree for local Scout troops.

Brother Ed Bankson is chairman of the Scouting Projects Committee, and his group is in close touch at all times with Scout headquarters. Brother Harold DeKorp heads the Campus Projects Committee, working under the advisement of the dean of men, Beryl Warden. An important project just recently undertaken by the last mentioned committee is that of providing tea and coffee to the city men who eat at the school and cannot afford to buy it.

## "BIG BROTHERS" IN UPSILON

Fourteen members of Upsilon Chapter accepted the responsibility of advising thirty-six freshmen at the beginning of the second semester.

"Gee, you must be an Omeega man" (long eee), exclaimed a frosh in wide-eyed admiration after his Big Brother had showed him how to obtain a locker, how to find it, and how to use the combination with a minimum of difficulty. This comment was typical of those made by incoming freshmen concerning their treatment at the hands of their Big Brothers of Alpha Phi Omega.

In addition to the customary tours of the building and speeches on the procedures and traditions of the college and its campus life, the Big Brothers went one step further—they helped the freshmen arrange their first semester's program. This

proved to be a time saver for both the faculty counselors and the freshmen.

## ASSIST IN GOVERNOR'S INAUGURATION

Forty-two members of Alpha Rho Chapter worked from 7:30 A. M. until the bitter end to handle the crowd of sixty thousand persons at the inauguration of Texas' new governor, W. Lee O'Daniel. The ceremonies were held in the University of Texas stadium.

The Alpha Phi Omega men served nobly in marshalling the bands, directing traffic, ushering, and in acting as field marshals in handling the entire crowd of visitors.

## ETA CONDUCTS HOBBY SURVEY

Model airplanes headed the list of hobbies of seventh and eight grade boys of DeKalb, Illinois, as tabulated by Eta Chapter of Alpha Phi Omega. Gum wrappers, shoe-strings, pins, match clips and many other collections were found to be in the possession of the DeKalb boys.

The chapter found hobbies in order of popularity to be model airplanes, baseball, basketball, woodcraft, fishing, hunting, swimming, boxing, electricity and reading, with art, cartoons, music, mechanics and hiking bringing up the rear.

It was the purpose of the questionnaire to find out the boys' interests, their affiliation with the Boy Scouts and to ascertain their desire to know more about Scouting if they were not already members. The information secured is being made available to the Scout Leaders of the community in hopes they will contact the non-Scouts and give them the opportunity of joining.

## FOURTH ANNUAL BENEFIT BRIDGE PARTY

On the evening of April 15, in the exhibition hall of the Municipal Auditorium in Kansas City, Alpha Eta Chapter will hold its fourth annual benefit bridge party. The proceeds of the party each year are used in the Robert D. Irland, Jr., Memorial Fund, a scholarship and loan fund sponsored by the chapter for students of the University of Kansas City.

## ALTERNATE NOON MEETINGS

*By Anthony Chmielewski, President Alpha Nu*

We have adopted a new meeting schedule in APO at St. Norbert. The first and third meetings of each month are devoted to full evening programs, while the second and fourth meetings are held at noon. At the noon meetings, the members plan the evening meetings in advance, discuss timely points of service and check up on projects that are being carried on. Each evening gathering lasts about two hours and consists of the business at hand, guest speakers or short movies, and closes with songs and occasionally refreshments.

## Furnish Transportation

The members of Alpha Nu Chapter furnished transportation for the St. Norbert College band, choir and male chorus when these three musical organizations presented programs of Christmas carols at the various institutions in the vicinity of the college during the past holiday season.

## WINTER ACTIVITIES OF BETA BETA

*By Brother Jack Ketzle*

During Farmers' Week at Michigan State, Beta Beta Chapter had complete charge of arranging housing facilities for the visitors.

Fifteen of our members recently visited the newly organized service group at Western State Teachers College at Kalamazoo to discuss affiliation with Alpha Phi Omega and to assist them in planning chapter organization and activities. This new group is vitally interested in Alpha Phi Omega and has already gained favorable recognition on the campus.

The first annual Winter Queen's Ball and Winter Follies on the Michigan State campus was presented on January 21 by Beta Beta Chapter cooperating with the Spartan Women's League. A program of fancy skating, barrel jumping, general skating, and hockey on the college rink preceded the sports clothes dance at which a winter queen, chosen by popular vote from a court of seven coeds, presided.

Our last open meeting featured a talk on hypnotism which proved exceptionally interesting and attracted about fifty visitors.



## Executive Committee of Presidents' Club at DeKalb, All Members of Alpha Phi Omega



This group of organization presidents was selected at a meeting of fraternity and campus leaders to head the formation of the new men's union at Northern Illinois State Teachers College. All of this group are members of Eta Chapter of Alpha Phi Omega. They are, left to right: Brothers Donald Warner, president of the junior class; Tego Larsen, president of the Varsity club; John Colver, president of the senior class, and Alfred Kupferberg, president of Alpha Phi Omega.

The need of this union is expressed by Dean A. N. Annas: "There are too many factions and cliques among the men . . . Many men of fine capabilities remain unnoticed throughout their college course, because they are unknown and will not push themselves forward." To fill this need and bring a closer fellowship among the men is the object of the new union.

The above picture appeared on the front page of the February 17, 1939, issue of the "Northern Illinois," student newspaper, and it appears here through the courtesy of the editors of that publication.

## SURVEY OF CAMPUS SOCIETIES REDECORATE FACULTY OFFICES

### Alpha Epsilon Secures Statistical Information

A campus-wide survey of all organizations except social fraternities and sororities has been conducted by Alpha Epsilon Chapter at Louisiana State University. About 90 societies were quizzed in the questionnaires used in the survey, with questions running from "What is average attendance?" to "What is the nature and purpose of your organization?"

The reason for the survey was to determine accurate and detailed information on the function of each group "in order to fully appreciate the value of every organization on the campus."

Statistical results of the survey will be published in the campus newspaper after compilation, and the official reports from all organizations will be then turned over to the dean of student affairs' office.

When Robert Downes, new instructor, arrived at the University of Miami and was guided to his office by a member of Alpha Pi Chapter, his first remark called attention to the unsightly condition of the room. Asking his guide what might be done about it, the APO member quickly answered, "We'll paint it." Thus an idea was born.

The chapter promptly appointed a special "paint the offices" committee, with Brother John Quimby as chairman. With paint brushes in hand, the members of Alpha Pi set about to improve the interior appearance of all offices on the campus. The professors are furnishing the paint and Alpha Phi Omega is furnishing the labor.

Latest reports are that the redecoration work has been completed in the history department and English department offices and the clean-up has now been started in the debate council room and the campus newspaper editorial rooms.

## "MARCH OF DIMES" AT FLORIDA

During the second semester registration at the University of Florida, Tau Chapter manned a booth by the registering line and made collections for President Roosevelt's "March of Dimes" program. This resulted in more than \$30 for the fund.

## SO GROWS THE HONOR ROLL

Twenty-four members have been added to the national honor roll since the list was last published in the TORCH AND TREFOIL. Twenty-four brothers have expressed their deep devotion to Alpha Phi Omega and their faith in the continued growth of this service fraternity by subscribing to Active Life Membership. They are:

Harry A. Britton (Gamma).  
Francis Rook (Iota).  
Arthur W. Tarbell (Kappa).  
Warren A. Butler (Alpha Alpha).  
Helmer O. Krehbiel (Alpha Iota).  
Carl Withner (Alpha Alpha).  
William L. Burlison (Alpha Alpha).  
Paul E. Boggs (Beta Delta).  
Robert R. Clarke (Alpha Rho).  
Jack A. Simon (Alpha Alpha).  
Walter Suter (Alpha Alpha).  
Basil P. Ketcham (Omega).  
Garnett C. French (Beta Beta).  
Donald K. Stevens (Alpha Alpha).  
Lex Templin (Alpha Xi).  
Rev. L. A. V. DeCleene (Alpha Mu).  
Walter F. Smith (Mu).  
Arthur N. Ekstrand (Eta & Beta Theta).  
Ben O. Barr (Mu).  
Norman R. Bell (Alpha Psi).  
Harry A. Harchar (Alpha Psi).  
Brower R. Ellis (Alpha Psi).  
Dr. Edwin C. Johnson (Omicron).  
Ivan Spoor (Alpha Alpha).  
Congratulations to these new members of the national honor roll! The Active Life Members are the "backbone" of Alpha Phi Omega's future.

### THE EDITOR SAYS . . .

Traditional or annual projects have been especially significant in the growth of the most successful chapters of Alpha Phi Omega. It is interesting to notice the number of such annual events that are mentioned in this issue.



## GUIDE SERVICE ROOM IN BETA DELTA

By J. V. Vaughter, Secretary

For several weeks, Beta Delta Chapter has been making preparations for an Information-Lost and Found-Guide Service Room. The room will be located on the campus and will be open throughout each day. All members of the chapter will assist in operating this service, being on duty at convenient hours.

We manned an information booth at the teachers convention in Commerce recently. About 800 teachers attended and our members assisted the deputy state superintendent in handling the registrations.

Lynn Landrum, who writes "Thinking Out Loud" for the Dallas News, is to be a speaker on the East Texas campus soon, and the college president has asked Alpha Phi Omega to serve as official hosts to him. This assignment we have of course gladly accepted.

We have shown several educational movies at Scout meetings and at the elementary schools of the community. At a cost of \$5 the chapter has access to the projector and we secure the films through the University of Texas, the only cost being the freight charges.

## TRAVEL BUREAU IN ALPHA XI

Car drivers and ride seekers are "getting together" at Washington State through the new travel bureau of Alpha Xi Chapter. A file has been established in the dean of men's office and a member of the chapter is on hand to handle applications between the hours of 8 and 12 each Friday morning and the day before each holiday. Drivers and passengers register their destinations and as soon as the proper arrangements can be made they are notified by the bureau.

For those who cannot apply at the dean's office during the specified hours, a box is provided and drivers and passengers may register by dropping in an information slip.

Brother Joe Long is the chapter's travel committee chairman.

## Two Other Travel Bureaus

Pi Chapter at Kansas State and Alpha Gamma Chapter at Purdue also are forming plans to provide travel assistance to students. Further reports about these bureaus will be published in future issues of the TORCH AND TREFOIL.

## CHI PUBLISHES CALENDAR OF EVENTS

By Robert Petersen, Historian

The members of Alpha Phi Omega at U. C. L. A. have prepared a chapter calendar for the months of March, April, May and June, 1939, which lists all of the activities to be sponsored by the chapter during the remainder of this school year. The projects are graphically divided into three classifications: Services to the campus, services to the Boy Scout movement and services to the members.

A snow hike was held in Chi Chapter, February 9 and 10, and the brothers who attended are still discussing with much pleasure their first experience at skiing. The scene of the trip was the Los Angeles Council's Camp Siwinis. Guests present included representatives of Psi Chapter of Santa Barbara State.

## BUSY IN ALPHA CHI

By Alvin Gutttag, Historian

Alpha Chi Chapter at M. I. T. is continuing its leadership in the Scout Troop at the Robert Breck Brigham hospital, under the able direction of Brother Roy Heacock. Plans are being made for an Eagle Scout day on the campus, at which time a selected group of Eagles from surrounding councils will be the guests of our chapter.

At our last two meetings we had special speakers. The first was

Brother B. A. Thresher, dean of admissions, who spoke on "Choosing Men for Tech." The second was Brother Oscar Hedlund, our senior faculty advisor and track coach who talked about the possibility of a four-minute mile. Both proved highly interesting.

In two of our minor projects recently we polished the trophies in the trophy room and operated a bulletin board of athletic events held at the institute.

## AN OFFICIAL WRITES ABOUT OMICRON

In a letter written by Mr. W. H. Bartley, Department of Publications, University of Iowa, is the following paragraph about the work of Omicron Chapter:

"For some time we have felt that guests on the campus should be conducted about the grounds and through the buildings by persons qualified for this work. University officials were unable to find time to do this for all of the visitors. Last month a local leader of Alpha Phi Omega approached us with an offer of the services of men belonging to that fraternity. Needless to say, we accepted the offer, and regular guide service has been set up. The services of the fraternity are given without charge, and we feel such contributions by Alpha Phi Omega to be invaluable to the university."

This is a keen testimonial for the value of the work of Omicron Chapter and for the spirit of service which permeates that chapter.

## The Insignia of Alpha Phi Omega Price List



Standard key, gold plated.....	\$ 3.25
Standard badge, gold plated (shown above, at extreme right).....	2.50
Standard badge, 10K.....	6.50
Standard key, 10K (shown above, in center).....	8.50
Standard badge, crown set pearl center plain arms (shown above, fourth from left).....	13.25
Standard badge, crown set pearl center and arms (shown above, second from left).....	24.25
Standard key, crown set pearl center plain arms.....	15.00
Standard key, crown set pearl center and arms.....	26.00
Recognition button, sterling (shown above, at extreme left).....	1.00
Recognition button, gold plated.....	1.50
Recognition button, 10K.....	2.50



# Congratulations to These New Chapter Officers

## ALPHA

Robert C. Dalrymple.....President  
James Bryant.....Vice-President  
Jack H. Steele.....Rec. Secretary  
Earl S. Bloxham.....Cor. Secretary  
Philip Leslie.....Treasurer  
James Charron.....Historian  
Prof. D. A. Hatch.....Senior Faculty Advisor

## GAMMA

Robert Wiggins.....President  
Richard S. Dale.....Vice-President  
Irving Mullen.....Secretary  
John Richards.....Treasurer  
A. Alfred Foster.....Historian  
Prof. E. D. Montillon.....Sr. Faculty Advisor

## EPSILON

George Friedmeyer.....President  
John Martin.....Vice-President  
Edward Sonntag.....Secretary  
Clifton Cornwell.....Treasurer  
Arnold Praetor.....Historian  
Prof. F. D. Hewitt.....Senior Faculty Advisor

## KAPPA

Theodore DeLay.....President  
Richard Ruthrauff.....1st Vice-President  
Herbert J. Fair.....2nd Vice-President  
Arthur Hirsch, Jr.....Secretary  
James Whitlum.....Treasurer  
Harold Quell.....Historian  
Harold DeKorp.....Sgt. at Arms  
Prof. B. C. Dennison.....Senior Faculty Advisor

## LAMBDA

Gordon Brigham.....President  
Bob Morrison.....Vice-President  
Kenneth Cedarland.....Secretary  
John L. Hixon.....Treasurer  
Albert Norton, Jr.....Historian  
Jack Heiser.....Alumni Secretary  
Prof. J. M. Jewett.....Senior Faculty Advisor

## MU

John Jay.....President  
Dick Herd.....Vice-President  
Edward Dodd.....Adv. Vice-President  
Walter Smith.....Adv. Vice-President  
Emerson Craig.....Secretary  
J. Lloyd Fitzpatrick.....Treasurer  
John C. Vanatta.....Historian  
Montford A. Mead.....Alumni Secretary  
Mr. B. R. Jones.....Senior Faculty Advisor

## OMICRON

William Moershell.....President  
William Schmertz.....Vice-President  
Warren Randall.....Secretary  
Hugh Ellsworth.....Treasurer  
William Eastman.....Historian  
Hillis Hauser.....Alumni Secretary  
Dr. Ethan Allan.....Senior Faculty Advisor

## PI

Earl Certain.....President  
Jack Fuller.....Vice-President  
Jim Lundsted.....Secretary  
Robert Mueller.....Treasurer  
Prof. G. R. McCaulley.....Senior Faculty Advisor

## TAU

Robert Parks.....President  
Newton J. Heuberger.....1st Vice-President  
Walter R. Weber.....2nd Vice-President  
Homer Still, Jr.....Secretary  
Clyde Simpson.....Treasurer  
Peyton Jordan.....Historian  
Elwood Penny.....Alumni Secretary  
Charles Cannon, Jr.....Sgt. at Arms  
Dr. Charles E. Bell.....Senior Faculty Advisor

## PHI

Robert E. Brown.....President  
Randolph Pinder.....Secretary  
Helmet Buechner.....Treasurer  
Jack D. Felsing.....Historian  
Prof. Gurth Whipple.....Senior Faculty Advisor

## OMEGA

Paul Stover.....President  
Lloyd Osborne.....Vice-President  
Basil P. Ketcham.....Secretary  
David Gutshall.....Treasurer  
Gerald Millsagle.....Historian  
Dr. A. J. Rider.....Senior Faculty Advisor

## ALPHA ALPHA

Carl B. Mast.....President  
Richard Merner.....Vice-President  
Jack Simon.....Secretary  
William Leitner.....Treasurer  
Vernon Norton.....Historian  
Prof. Irwin R. Hoener.....Sr. Faculty Advisor

## ALPHA BETA

John U. Keating.....President  
Marshall Gates.....Vice-President  
Donald S. Henderson.....Secretary  
George S. Pomeroy.....Treasurer  
Prof. T. J. Gates.....Senior Faculty Advisor

## ALPHA GAMMA

Richard E. Stradling.....President  
Ralph L. Colby.....Vice-President  
W. O. McWorkman.....Secretary  
Crowell Knight.....Treasurer  
Prof. H. G. Venemann.....Senior Faculty Advisor

## ALPHA DELTA

J. Bower Forbes.....President  
Noel Bickham.....Vice-President  
Bob Ravey.....Rec. Secretary  
Howard Cooper.....Cor. Secretary  
Don Major.....Treasurer  
Bob Gray.....Historian  
Prof. James E. Crouch.....Sr. Faculty Advisor

## ALPHA ETA

Bernard J. Koehler.....President  
Reed Kenagy.....Secretary

## ALPHA KAPPA

Eugene Zechmeister.....President  
William Quinn.....Vice-President  
Carlos Munoz.....Secretary  
Edwin D. Guerin.....Treasurer  
James Rearden.....Historian  
Dr. Francis M. Bacon.....Senior Faculty Advisor

## ALPHA LAMBDA

Frank Buck.....President  
Eugene Corcoran.....Vice-President  
Paul Nickel.....Secretary  
Jud Monson.....Treasurer  
Lloyd Cadwell.....Historian  
Prof. J. R. Dice.....Senior Faculty Advisor

## ALPHA NU

Victor W. Kant.....Vice-President  
Paul P. Zawasky.....Treasurer  
Roland R. Bultman.....Historian  
Charles Konopa.....Alumni Secretary  
Rev. L. A. V. DeCleene.....Sr. Faculty Advisor

## ALPHA XI

Chester Peach.....President  
George B. Millard.....Secretary  
Harlan McCullough.....Treasurer

## ALPHA OMICRON

Ross Fulton.....President  
Fred Haynes.....Vice-President  
Hammond Coffman.....Secretary  
Paul Harris.....Treasurer  
J. T. Peurifoy.....Historian  
H. C. Maiden.....Alumni Secretary  
Prof. Lester Jordan.....Senior Faculty Advisor

## ALPHA PI

Raymond C. J. Reiner.....President  
Raymond Fordham.....1st Vice-President  
Stephen Pratt.....2nd Vice-President  
Frank Kerdyk.....Secretary  
Robert Hillstead.....Treasurer  
Lewis Fogel.....Historian  
James Mool.....Alumni Secretary  
Ernest McCracken.....Senior Faculty Advisor

## ALPHA SIGMA

Aulton Roland.....President  
Bob Goldsmith.....Vice-President  
Carroll Garey.....Secretary  
John Gayer.....Treasurer  
Gerald Spahn.....Historian  
Edmund Dudek.....Alumni Secretary  
Prof. E. W. Lantz.....Senior Faculty Advisor

## ALPHA TAU

Robert Kershaw.....President  
Robert Patrick.....Vice-President  
Max E. Wildman.....Secretary  
Edward B. Liljeblad.....Treasurer  
Dave Craycraft.....Historian  
Richard Riser.....Alumni Secretary  
Prof. Don W. Sparks.....Senior Faculty Advisor

## ALPHA UPSILON

William S. Parks, Jr.....President  
Jack Armstrong.....Vice-President  
Alex Porteus.....Secretary  
Albert Rosencranz.....Treasurer  
Robert Black.....Historian  
David Oughton.....Sgt. at Arms  
Dr. W. E. Edington.....Senior Faculty Advisor

## ALPHA CHI

Norman Scott.....President  
Richard Babish.....Vice-President  
Charles MacKinnon.....Secretary  
Henry Pohndorf.....Treasurer  
Alvin Gutttag.....Historian  
Robert Gould.....Alumni Secretary  
Mr. Oscar Hedlund.....Senior Faculty Advisor

## ALPHA PSI

Robert Easton.....President  
Harry A. Harchar.....Vice-President  
Charles G. Myers.....Rec. Secretary  
Robert Kelley.....Cor. Secretary  
George F. Salathe.....Treasurer  
Wayne O'Neill.....Historian  
Brower R. Ellis.....Alumni Secretary  
Dr. C. G. Beardslee.....Senior Faculty Advisor

## ALPHA OMEGA

Eugene Hopkins.....President  
Joseph Beasley.....Vice-President  
Ray A. Mahoney.....Secretary  
Wiley Rountree.....Treasurer  
Virgil Altholz.....Historian  
Dr. C. M. Esterline.....Senior Faculty Advisor

## BETA ALPHA

Charles A. Morgan, Jr.....President  
George E. Scheer.....Vice-President  
Jack Evans, Jr.....Secretary  
William E. Miller.....Treasurer  
Warren E. Nossaman.....Historian  
Jack McWilliams.....Alumni Secretary  
Prof. Cecil B. Read.....Senior Faculty Advisor

## BETA BETA

Robert Krejci.....President  
Richard Crew.....Vice-President  
Bernard Wohlferd.....Rec. Secretary  
Richard Alman.....Cor. Secretary  
Albert Smith.....Treasurer  
Robert McCauley.....Alumni Secretary  
Eugene Kelly.....Historian  
William Spindler.....Sgt. at Arms  
Prof. Russell B. Daubert.....Sr. Faculty Advisor

## BETA GAMMA

Claire Nesmith.....President  
Lewis Gunther.....Vice-President  
Jack J. Winebrenner.....Secretary  
Robert Sieweke.....Treasurer  
Roy Cibulka.....Historian  
Rupert L. Wenzel.....Alumni Secretary  
Dr. Charles H. Seevers.....Sr. Faculty Advisor

## BETA EPSILON

Everett Alton.....President  
Chris Overgaard.....Vice-President

(Continued on following page)



## NEW CHAPTER OFFICERS

(Continued from previous page)

John Connolly .....	Secretary
John Wahl .....	Treasurer
Claude Rayburn .....	Historian
Lloyd Wilson .....	Alumni Secretary
Dr. Hugh S. Buffum .....	Senior Faculty Advisor

## BETA ETA

Stewart Swing .....	President
Wesley Goldberg .....	Vice-President
Halston Quinn .....	Secretary
Guenther Kurth .....	Treasurer
John Sandige .....	Historian
Eugene H. Nichols .....	Alumni Secretary
Robert L. Hill .....	Senior Faculty Advisor

## BETA THETA

Robert Lovell .....	President
Anton Jurik .....	Vice-President
Hans Jepsen .....	Secretary
Alvin Neumeister .....	Treasurer
Alfred Roberts .....	Historian
Robert Dicke .....	Cor. & Alumni Secretary
Prof. J. F. Oesterle .....	Senior Faculty Advisor

## BETA IOTA

Harry Cohn .....	President
Alvin Rapp .....	Vice-President
Alfred Reichbach .....	Secretary
David Kass .....	Treasurer
Harry Faliks .....	Historian
Sydney G. Willner .....	Alumni Secretary
Dr. H. Harold Axworthy .....	Sr. Faculty Advisor

## AID STUDENT LOAN FUND

The problem of the student who cannot afford to buy needed text books, or who must have food even when his last penny is gone, is truly vital. This problem is relieved at Syracuse University by a student emergency relief fund, in which Alpha Phi Omega has assisted for many years.

Phi Chapter performed a three-day service the first week of February by assisting in the campaign for contributions to the loan fund.

First the chapter furnished a "flying squadron" of 30 members who covered the campus in a general living center canvass. In a second capacity, the chapter members covered the city in a squad of cars, soliciting at the homes of all off-campus students who do not have the opportunity of contributing in other fund drives.

Then to further swell the fund, Phi Chapter cooperated with the Women's City Club and the Propeller Club of Syracuse in sponsoring a "Snow Ball" dance. Brother Sam McCain served ably as chairman of the party, and Brother Charles Pound did a very elaborate job as head of the decorations committee. The proceeds of the dance were given to the emergency loan fund.

## Gleanings from Chapter Correspondence

## WILLIAM JEWELL

"For the fourth consecutive year, Alpha Mu Chapter is sponsoring an intramural basketball tournament on the campus and will award a trophy to the winning organization. We also plan to have an interfraternity sing in the spring.

"Among our unfinished projects are two radio programs that are to be presented in the near future, one over WDAF and the other over KMBC of Kansas City."

—Will Wyant, Jr., Historian

## FLORIDA

"Getting away from the routine type of business meetings, Tau Chapter is having one outdoor meeting each month, one supper meeting each month, one "program meeting" near the end of each month with a good speaker and a fourth meeting of varied type. As a result the meetings recently have been really swell."

—Henry Howison, Past President

## ILLINOIS

"Farm-Home week brings several thousand men and women to the campus and Alpha Phi Omega will register, assist in housing and directing them during their visit. We assisted with this work last year and the department was so well pleased they have given us bigger and more important assignments this year."

—Carl B. Mast, President

## ILLINOIS

"We have just completed our annual service in the state high school wrestling tournament. We helped weigh in the athletes, drew up the brackets, served as ticket sellers and doormen, served as official scorers, posted results, announced the matches, helped present the awards. Alpha Alpha has performed this service three years, in fact ever since the wrestling tournament was put on a state-wide basis."

—Jack Simon, Secretary

## KANSAS

"We are all set to launch our fingerprinting project. We have the approval of the chancellor and expect the response to be good."

—Kenneth Cedarland, Secretary

## SYRACUSE

"Brother Austin Lawrence supervised a book exchange during second semester registration. It had the approval of Chancellor Graham and Dean Levitt and was very helpful to many students. It will no doubt be continued next fall."

—Jack D. Felsing, Historian

## EAST TEXAS

"We have a new plan of having the chapter committees meet ten minutes immediately before each meeting, then each chairman reports to the chapter about the committee's activities of the week and hands the secretary a written report. This is working out grand with us."

—J. V. Vaughter, Secretary

## IOWA STATE

About a month ago the chapter secretary

and I attended the first student leadership conference ever held at this college, and we profited greatly. This might be an idea for other chapters to propagate on their campuses.

—Otis B. Miller, President

## SANTA BARBARA

Psi Chapter at Santa Barbara gave a dance February 4 for the Senior Scouts of the Mission Council. Over 250 guests attended from the cities of Lompoc, Santa Maria, Ventura, Guadalupe and Orcutt and Santa Barbara. The entertainment included progressive games, dancing and a floor show. The party was managed by Brothers Ronald Gaitskell, Marcellus Jones, Charles Gawthrop, James Woody, Roland Weatherhead and John Sievers.

—George Guntermann, President

## LOUISIANA STATE

"The officers of Alpha Epsilon Chapter will go to Lafayette, La., next week-end for the purpose of getting acquainted with the petitioning group at Southwestern Louisiana Institute and cooperating with them in any way we can. A report of the visit will be sent to the National Office."

—Frank H. Walk, Secretary

## WASHINGTON STATE

"I recently made a trip to the University of Idaho where I attended a meeting of the local service group which is preparing to affiliate with Alpha Phi Omega. They had forty-two men present and all paid a local fee to join the group. They elected officers and organized on a permanent basis. We may expect this group to submit its petition within a short time."

—Chester Peach, President Alpha Xi

## IOWA

"We have not tackled many projects, but those we have undertaken have been time-consuming and, if I do say so, have been well done. The fellows have cooperated beautifully on them. They are as follows: Two radio broadcasts a month which have met with good success and developed quite a following, information booth at registration time (the administration really smiled on this), guide service, showing parents, high school students, alumni and convention groups around the campus, furnishing Christmas decorations for the classic columns of the administration building, and small, last minute jobs which have developed for us a reputation for efficiency and dependability."

—Hillis Hauser, Past President

## OMAHA

"We helped the Women's Athletic Association of the university with a card party by arranging to haul the tables, set up chairs, provide guide service, etc."

—Harold Hansen, Historian

## NORTHERN ILLINOIS

"As a part of our observation of National Scout Week, we sponsored a Scout Rally in the women's gym of the college. Three hundred Scouts, parents and visitors joined in one of the most spectacular rallies ever held in this area."

—Alfred Kupferberg, President



# TORCH and TREFOIL

The Magazine of  
**Alpha Phi Omega**  
National Service Fraternity

Issued regularly four times a year in  
October, December, March and May.  
Subscription price 50c a year

Entered as second class matter February 5,  
1938 at the post office at Kansas City, Mo.,  
under act of March 3, 1879.

Office of Publication  
407 Land Bank Bldg.  
Kansas City, Missouri

## National Executive Board of Alpha Phi Omega

Walter W. Head	St. Louis, Mo.
<i>National Honorary President</i>	
H. Roe Bartle	Kansas City, Mo.
<i>National President</i>	
William J. Campbell	Chicago, Ill.
<i>National First Vice-President</i>	
Dr. M. C. Hayes	DeKalb, Ill.
<i>National Second Vice-President</i>	
Sidney B. North	Kansas City, Mo.
<i>National Secretary</i>	
Dr. Edwin C. Johnson	Chicago, Ill.
<i>National Treasurer</i>	
T. W. Lacy	Kansas City, Mo.
<i>National Field Representative</i>	

Dean Francis M. Bacon	Los Angeles, Cal.
Carl S. Bauman	St. Louis, Mo.
George H. Charno	Kansas City, Mo.
Prof John S. Coie	Pullman, Wash.
Fred G. Davie	Lincoln, Nebr.
C. M. Finnell	Chicago, Ill.
James P. Fitch	Dallas, Texas
Dr. H. H. Germond	Gainesville, Fla.
Frank R. Horton	Easton, Pa.
Dean Arno Nowotny	Austin, Texas
Harold F. Pote	New York, N. Y.
Dr. Louis H. Renfrow	St. Louis, Mo.
Prof. Kent D. Shaffer	Pittsburgh, Pa.
Dr. Lester I. Tavel	Platte City, Mo.
Prof. A. L. Thomas	Auburn, Ala.
Dr. Ray O. Wyland	New York, N. Y.

## ROSTER OF CHAPTERS

### Alpha Phi Omega

#### ALABAMA

Delta - Alabama Polytechnic Institute.....Auburn

#### ARKANSAS

Beta Rho - University of Arkansas.....Fayetteville

#### CALIFORNIA

Zeta - Stanford University.....Stanford

Chi - University of California at Los Angeles.....Los Angeles

Psi - Santa Barbara State College.....Santa Barbara

Alpha Delta - San Diego State College.....San Diego

Alpha Kappa - University of Southern California.....Los Angeles

#### FLORIDA

Tau - University of Florida.....Gainesville

Alpha Pi - University of Miami.....Coral Gables

#### GEORGIA

Beta Zeta - University of Georgia.....Athens

#### ILLINOIS

Eta - Northern Illinois State Teachers College.....DeKalb

Sigma - Northwestern University.....Evanston

Alpha Alpha - University of Illinois.....Urbana

Beta Gamma - Central Y. M. C. A. College.....Chicago

#### INDIANA

Mu - Indiana University.....Bloomington

Alpha Gamma - Purdue University.....Lafayette

Alpha Tau - Butler University.....Indianapolis

Alpha Upsilon - DePauw University.....Greencastle

Beta Lambda - Indiana State Teachers College.....Terre Haute

#### IOWA

Xi - Iowa State College.....Ames

Omicron - University of Iowa.....Iowa City

Omega - Drake University.....Des Moines

Beta Epsilon - Iowa State Teachers College.....Cedar Falls

#### KANSAS

Lambda - University of Kansas.....Lawrence

Pi - Kansas State College.....Manhattan

Beta Alpha - University of Wichita.....Wichita

Beta Tau - Washburn College.....Topeka

#### KENTUCKY

Alpha Beta - University of Kentucky.....Lexington

#### LOUISIANA

Alpha Epsilon - Louisiana State University.....Baton Rouge

Beta Phi - Southwestern Louisiana Institute.....Lafayette

#### MASSACHUSETTS

Alpha Chi - Massachusetts Institute of Technology.....Cambridge

#### MICHIGAN

Beta Beta - Michigan State College.....East Lansing

#### MISSOURI

Epsilon - Northeast Missouri State Teachers College.....Kirksville

Iota - Park College.....Parkville

Alpha Eta - University of Kansas City.....Kansas City

Alpha Mu - William Jewell College.....Liberty

Alpha Phi - Washington University.....St. Louis

Alpha Omega - Kirksville College of Osteopathy & Surgery.....Kirksville

Beta Eta - University of Missouri.....Columbia

Beta Kappa - Central Missouri State Teachers College.....Warrensburg

Beta Mu - Southwest Missouri State Teachers College.....Springfield

Beta Xi - Westminster College.....Fulton

Beta Omicron - Missouri School of Mines and Metallurgy.....Rolla

Beta Upsilon - Northwest Missouri State Teachers College.....Maryville

Beta Psi - Southeast Missouri State Teachers College.....Cape Girardeau

#### NEBRASKA

Alpha Theta - University of Omaha.....Omaha

Alpha Sigma - University of Nebraska.....Lincoln

#### NEW JERSEY

Nu - Upsala College.....East Orange

#### NEW YORK

Gamma - Cornell University.....Ithaca

Phi - Syracuse University.....Syracuse

Beta Iota - New York University.....New York

#### NORTH CAROLINA

Rho - University of North Carolina.....Chapel Hill

#### NORTH DAKOTA

Alpha Lambda - North Dakota Agricultural College..... Fargo

#### OHIO

Alpha Iota - Ohio State University.....Columbus

#### OKLAHOMA

Beta Nu - Northeastern State Teachers College.....Tahlequah

Beta Pi - University of Tulsa.....Tulsa

Beta Chi - Oklahoma City University.....Oklahoma City

#### PENNSYLVANIA

Alpha - Lafayette College.....Easton

Beta - University of Pittsburgh (inactive).....Pittsburgh

Kappa - Carnegie Tech.....Pittsburgh

Alpha Beta - Pennsylvania State College.....State College

Alpha Psi - Lehigh University.....Bethlehem

#### TEXAS

Alpha Omicron - Southern Methodist University.....Dallas

Alpha Rho - University of Texas.....Austin

Beta Delta - East Texas State Teachers College.....Commerce

Beta Sigma - Texas Technological College.....Lubbock

#### VIRGINIA

Theta - University of Virginia.....Charlottesville

#### WASHINGTON

Alpha Xi - Washington State College.....Pullman

#### WISCONSIN

Upsilon - Milwaukee State Teachers College.....Milwaukee

Alpha Nu - St. Norbert College.....West DePere

Beta Theta - University of Wisconsin.....Madison