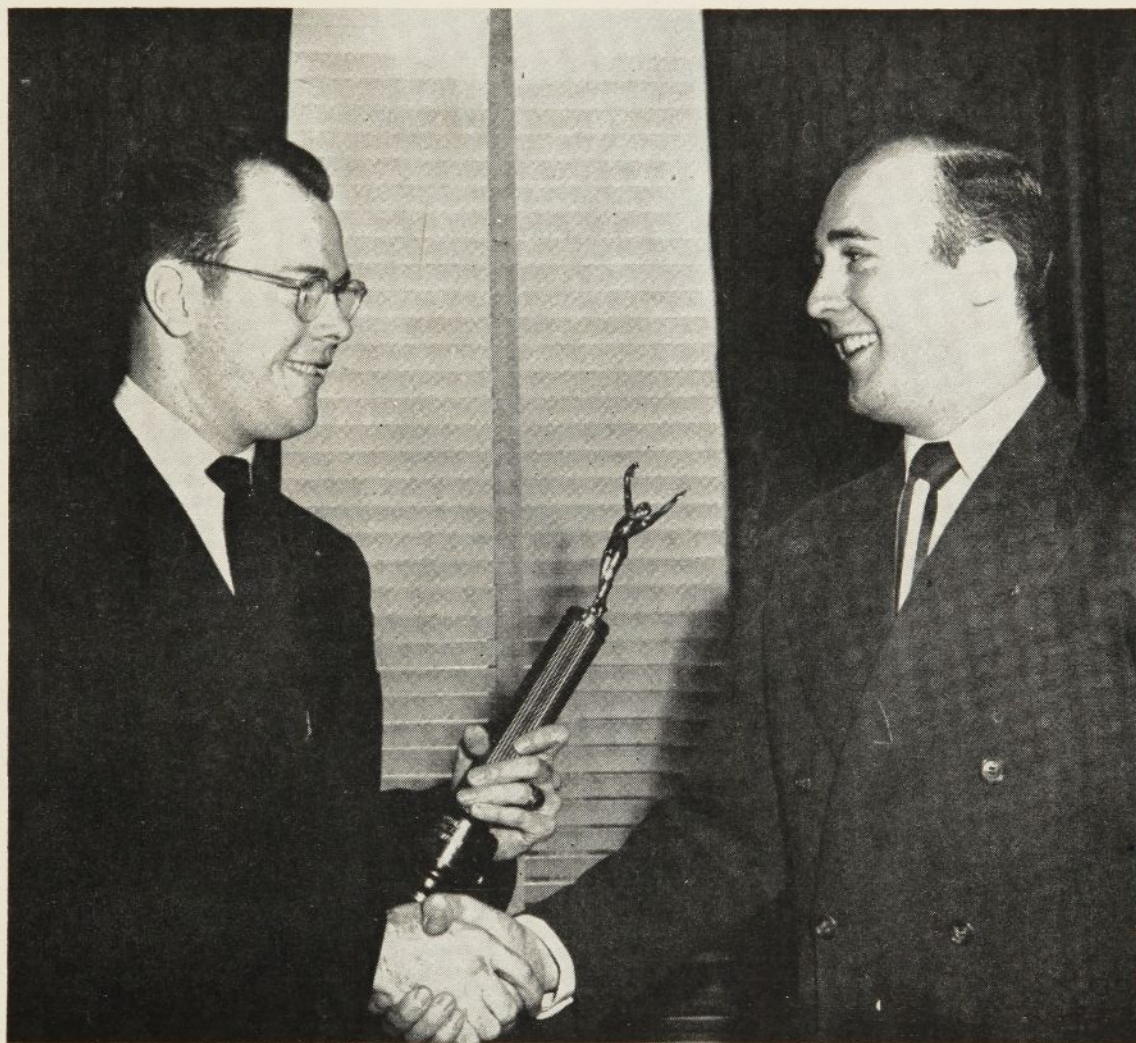




TORCH AND TREFOIL



Outstanding Senior Award

(Story on page ten)

**VOLUME 27, NUMBER 3
MARCH, 1952**

National Officers of Alpha Phi Omega

Prof. Daniel Den Uyl, West Lafayette, Ind.
National President
M. R. Disborough, Des Moines, Iowa
National First Vice President
Dr. Henry Miller, New York, New York
National Second Vice President
Joseph Scanlon, Yakima, Washington
National Third Vice President
Frank D. Wood, Atlanta, Georgia
National Treasurer
Sidney B. North, Kansas City, Missouri
National Secretary

National Executive Board

The Officers and

Prof. Harry C. Barnett, . . . East Lansing, Mich.
Dr. H. Roe Bartle, Kansas City, Missouri
Dr. R. H. Bolyard, Lafayette, Louisiana
George F. Cahill, Milwaukee, Wisconsin
C. J. Carlson, Los Angeles, California
George H. Charno, Kansas City, Missouri
Irwin H. Gerst, Los Angeles, California
Dr. M. C. Hayes, DeKalb, Illinois
Arthur E. Jenner, Boston, Massachusetts
Dean Arno Nowotny, Austin, Texas
Harold F. Pote, New York, New York
William S. Roth, Chapel Hill, N. Carolina
Prof. Kent D. Shaffer, Pittsburgh, Pa.
Armand G. Spizzirri, Des Moines, Iowa
Prof. A. L. Thomas, Auburn, Alabama
Dr. Ray O. Wyland, New York, New York
Dr. A. C. Zumbrennen, Marshall, Missouri

"BOX SCORE"

Present number of chapters,
including petitions approved.. 242
Total number of members since
founding35,894
Number of copies of this issue....14,000

No one can remain unhappy
when he is trying to think how
he can make someone else hap-
py, or how to make his own
life more useful.

—GEORGE MATTHEW ADAMS.

TORCH and TREFOIL

March, 1952

Issued regularly eight times a year in
September, October, November, December,
February, March, April and May.

Subscription price \$1.00 a year.

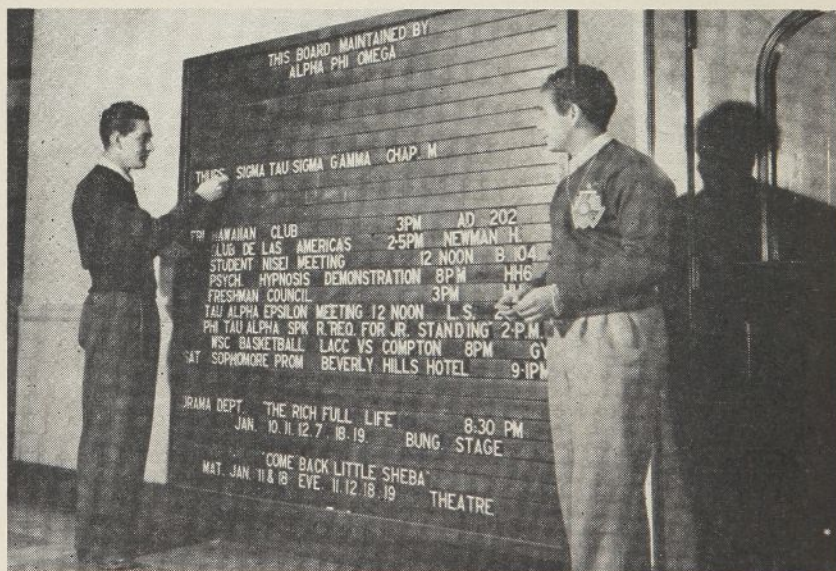
Entered as second class matter February 5,
1938, at the post office at Kansas City, Mo.,
under act of March 3, 1879. Office of pub-
lication, 419 Columbia Bank Bldg., Kansas
City, Missouri.

DIMES HIT THE TUBS AT EASTERN ILLINOIS



In its annual drive for the March of Dimes, Delta Psi Chapter at Eastern Illinois State College made the collection at two basketball games in January. During halftime while the band played, the chapter lined up three tubs on each side of the gym and let the crowd try to hit the tubs with their coins. Although they often tried to hit the APO members (notice the helmets which offered some protection), the plan really works. This year a total of \$314.77 was collected at two games. This was turned over to the Coles County polio chairman. The picture is by courtesy of James F. Brubeck, Chapter Treasurer.

CARING FOR BULLETIN BOARD



A daily activity of Epsilon Chi Chapter is the care of the bulletin board pictured above at Los Angeles City-State College. At right is Harold Hale, President, and at left is Jim Thomas, Treasurer. This board is kept up-to-date each day by different members of the chapter. The picture is by courtesy of Miss Gladys Tippet.

UGLY MAN CONTEST

By Armand G. Spizzirri

Member of National Executive Board

One of the most popular and useful projects of Alpha Phi Omega is the Ugly Man Contest. It is a "painless" way of raising money for a worthy cause, and it arouses campus-wide interest.

This project is relatively simple to initiate and moderately involved in background organization.

First, pick a good reason for conducting the contest, such as the benefit of the Community Chest or the March of Dimes. The contest is sometimes used to bolster lagging campus spirit relative to the Varsity team, or for the Red Cross drive, the Heart drive, campus beautification, youth center, and on and on goes the list of worthy recipients.

Second, check with the officials of your college administration to request approval. Make sure there is no reason which would cause this kind of event to be unwise.

Third, as in any project, plan it well within the chapter of Alpha Phi Omega. Determine the method of voting, the candidacy eligibility, publicity, prizes and the possibility of an assembly devoted to it (this is often acceptable to the administration if the cause is of sufficient merit). Who, in your chapter, is to see that the project goes off on schedule, ends on schedule and fulfills its purpose? Let's study some of the apparent problems.

A. Voting

1. Select a specific time for the polls to operate and let them be operated by APO members. Set a standard charge per vote (see statistics on next page).
2. Let the polls remain open over a period of days, charging by the vote, having no limit on the number of times an individual can vote.
3. If you possess an ingenious engineer he can rig an electrically operated coin vote recorder, automatically tabulating votes



Design developed by Alpha Iota Chapter of Ohio State University.

for a candidate as any size coin is deposited.

4. Decide at the beginning when the results will be made known, then stick to it.

B. Candidates

1. It is recommended that you allow both campus-at-large and living quarters candidates, for if exclusive to either, the danger exists of not appealing to enough varied interests on the campus.
2. It is suggested that a written application for each candidate be in your files before the contest. Only those so filed should have votes tabulated for them. A practical joker could upset a good deal like this by submitting some fictitious or mythical candidate.
3. Try the faculty! If enough informality exists, maybe this group might have a candidate.
4. Allow sufficient time in advance of voting for the filing of candidates' applications.

C. Publicity

1. Reams could be written! Almost every project needs good

publicity. Give this project *plenty* of publicity. Campus newspaper and radio. Convocation announcements. Bulletin board notices. Posters. Town papers and radio. Dormitory and residence notification. *Talk it up.*

D. Prizes

1. Certainly, the prize should be attractive, but within reason. Very often, just a scroll or wall plaque is more desirable than an expensive watch.
2. If published, make the prize well known. If not published, let no one know in advance.
3. Perhaps a college or student body official would be happy to present the award, giving official sanction and prestige to the endeavor.
4. Who pays for the prize? Sometimes the local merchants will donate; in other instances the chapter may purchase the award.

E. Convocation

1. An all-school assembly is ideal. However, on those campuses where these are of a religious nature, perhaps something on the order of a pep rally or show should be substituted.
2. A take-off on a fashion or beauty show, using the candidates, grimacing their worst, might be interesting.
3. Since this project is in itself whimsical, the program should be light, fast moving, and funny.
4. One chapter was most successful in comparing the ugly men to beauties, calling attention to outstanding qualifications of each. A clever M.C. can do that.

F. Chairman

1. This is important, for the right individual performing the task of general chairmanship can

(Continued on page four)

STATISTICS CONCERNING THE CONTEST

Gamma Pi Chapter at the University of Michigan recently conducted a survey among chapters which have conducted the Ugly Man Contest. Through the courtesy of Brother Bert Braun, Recording Secretary, we present the following facts about the voting and the use of funds collected in this project.

I. Cost Per Vote.

Different voting denominations used by chapters are as follows:

- One cent.
- Five cents.
- Ten cents.
- Contribution of a dime for March of Dimes.
- One cent equal to five votes.
- One cent or 1,000 votes for a pint of blood.
- One dollar admission to a dance.

II. Financial Returns.

- Highest total: \$1,270.00.
- Lowest total: \$35.00.
- Mean average: \$353.50.

III. Agencies to Which Proceeds Were Donated.

The following is a list of various agencies to which chapters have given the funds collected in Ugly Man Contests. This indicates a broad field of use of the proceeds from this project.

- Community Chest.
- Campus Chest.
- March of Dimes.
- World Student Service Fund.
- Red Cross.
- CARE.
- Christmas party for orphans.
- American Cancer Society.
- Fresh Air Camp.
- Campus Emergency Fund.
- Infantile paralysis ward of hospital.
- Campus projects carried out by Alpha Phi Omega.
- Thanksgiving baskets for needy families.

IV. Coordination with Other Events.

The survey indicated that the Ugly Man Contest has been coordinated with many different campus activities, as follows:

- Campus-wide WSSF drive.
- Senior Week.
- Interfraternity Council Week.
- Spring Carnival.
- Campus Chest and Community Chest drive.
- Talent Show.
- Homecoming Week.
- Pan-Hellenic Week.
- College Open House.
- Big Game.
- Nationwide March of Dimes drive.
- Alpha Phi Omega Charity Ball.
- Sports Night.
- High School Music Festival.
- Fresh Air Camp Fund drive.
- Many were not coordinated with any other event.

V. Awards.

These various kinds of awards have been given to winners of Ugly Man Contests:

- Ugly Man key.
- Ugly Man mug.
- Plaque.
- Certificate.
- Trophy.
- Rotating cup.
- Fountain pen.
- Gifts from town stores.
- All-expense evening with a local celebrity.
- Kiss from a campus queen.
- Loving cup to organization sponsoring winner.

UGLY MAN CONTEST

(Continued from page three)

make the event a howling success.

2. His qualifications:

- a. A promoter. b. A planner.
- c. A doer. d. A he-whoer (he who can get others to work; also, get others steamed up).

3. Afford plenty of man-power for subcommittees, i. e., publicity, voting, filing, finance, etc.

These are but a few specific suggestions, offered in the hope that they might help you when your chapter promotes an "Ugly Man" Contest.

Now, here are some further suggestions, gleaned from correspondence, chapter reports, and personal observation; all of which have proved merit.

1. Seek cooperation of girls' organizations in building enthusiasm on the campus. Even to the point of the prize being a kiss from a Queen (and every campus sooner or later elects a Queen for something) to the ugliest man.
2. If, for a cause such as March of Dimes or Red Cross, it should be possible to interest the local leaders of that agency, try to bring them into the event somewhere.
3. And while we're speaking of that, let's clear with the officials of the beneficiary agency, to secure their approval.
4. As to candidates among your chapter members, this is a ticklish subject. We'd say only under other sponsorship. And maybe not even then.

One word of caution! Keep the contest honest and the enthusiasm controlled. Ill feeling will hurt future projects. And remember, though lots of fun, this is a service project sponsored by the men of Alpha Phi Omega who enjoy a national reputation for doing things well, with purpose and dignity—the dignity of gentlemen.

Editor's Note: By popular demand this article is reprinted from a previous issue for the benefit of additional chapters which desire to start the Ugly Man Contest on their campuses. Any chapter which has any particular questions about conducting this project is invited to write to the National Office.

THE CONTEST IN PICTURES



The usual method of voting in the Ugly Man Contest is shown by this picture from Delta Beta Chapter's annual contest at the University of Oklahoma. Glass jars are used as containers for the money contributed as votes for each candidate. The contents are visible at all times. In the particular contest at which this picture was taken, the voting began in small milk bottles and later larger containers had to be obtained for the candidates who were leading the field in the final surge of voting.



In this picture are shown the winner and the three next highest in the voting in Beta Psi Chapter's Ugly Man Contest. They are holding gifts provided by local merchants in Cape Girardeau, Missouri. Through this contest the chapter donated \$1,000.00 to the polio ward of St. Francis Hospital. The winner at lower right is Willy Moonshine. He was presented a trophy, and a permanent plaque to show the name of each annual winner has been placed in the trophy case of the college. The two photographs on this page from Beta Psi Chapter are by courtesy of Keith B. Vinyard.



Miss Patti Page, "The Singing Rage," appearing at a University of Virginia dance, presented a cup to Charles Hewitt, voted the university's Ugliest Man in a contest sponsored by Theta Chapter of Alpha Phi Omega. She also gave a key and a kiss to the winner who was the candidate of Delta Upsilon Fraternity. The proceeds from this project were donated to the student loan fund.



A new innovation by Beta Psi Chapter is the "Slave for a Day" in connection with the Ugly Man Contest. The men on the campus paid twenty-five cents for a girl to do various tasks. The money went to the fund and the girls went to work. They sewed buttons on shirts, typed notes, carried books, shined shoes, and one girl even found herself washing a car. This added much to the excitement in the contest at Southeast Missouri State College.

The Ugly Man



WHO WILL HE BE?

VOTE April 11th & 12th **VOTE**

Many styles of posters have been used in promoting the Ugly Man Contest. The replica above is of a poster displayed on bulletin boards at the University of Virginia in Theta Chapter's contest. Publicity is a great factor in the success of this project.

WE PAUSE TO HONOR

By Frank E. Overbey, Jr.

Past President, Alpha Chapter,
Lafayette College

On February 9, 1952, the Delaware Valley Area Council, Boy Scouts of America, awarded the Silver Beaver to Dr. D. Arthur Hatch. It is Scouting's highest award for outstanding service to youth. This was the most recent of many recognitions given this brother who has throughout his lifetime been the personification of the ideals of Alpha Phi Omega. Let us briefly review this man's life and see not how but why Professor Hatch has been afforded these many honors.

Brother Hatch was born in Weissport, Pennsylvania, on December 30, 1877. He graduated from the South Easton High School in 1894; received his Bachelor of Science in mine engineering from Lafayette College in 1904; the degree of Master of Arts in mathematics from Columbia University in 1924.

He was employed as an engineer of mines by the A. S. Van Wickle Estate, Hazleton, Pennsylvania, from 1904 to 1906; with the Pennsylvania Coal Company, Scranton, Pennsylvania, from 1906 to 1907; was assistant superintendent of the Kearney Coal Company, Kearney, Pennsylvania, from 1907 to 1908, and with the A. Pardee and Company at Hazleton from 1908 to 1910. He returned to Lafayette in 1910 as an instructor of mathematics and in 1915 became an assistant professor in that department. In 1924 he became an associate professor. He retired from active teaching in 1948 but continued on in other campus activities, including being Chairman of the Advisory Committee of Alpha Chapter of Alpha Phi Omega, thus rendering his retirement only a professional one and not a personal one. More will be said on this in a moment.

Dr. Hatch is a member of the American Mathematical Society, Mathematical Association of America, American Association of University Professors, Society for the Promotion of Engineering Education and the honorary engineering society, Tau Beta Pi. The degree of Doctor of Science was con-



Dr. D. Arthur Hatch

ferred upon him by Lafayette College on October 27, 1951.

Danny Hatch, as he is affectionately known, has been a confident and loyal friend to men of Lafayette through many years. His unbounded loyalty to Lafayette has burned his name deep in the hearts of many. His understanding of youth has been a psychological factor in building confidence in students for their accomplishment of goals. A contagious personality, his enthusiasm on the campus for extracurricular activities made him a familiar figure at student rallies on and off the campus.

He served as Chairman of the Advisory Committee to Alpha Chapter since the founding of the fraternity. In 1948 he was awarded the Alpha Phi Omega Distinguished Service Key by the Alpha Chapter for his service as one of the founders, and on January 10, 1952, he was again awarded a second Distinguished Service Key in recognition of his twenty-six years' active Alpha Phi Omega association. That same evening he installed Dr. Paul Leininger as the new Chairman

of the Advisory Committee, thus effecting his retirement.

Danny's association with Scouting has been as long and as equally rewarding as his service with Alpha Phi Omega. He was elected to membership in the Delaware Valley Area Council when it was chartered in February, 1919. He has served many years on the Leadership Training and other committees. He is at present a member-at-large of the council, and his enthusiasm for Scouting is unbounded.

Danny's wife is the former Marion C. Hartz and they have one son, William A. Hatch.

The high regard in which he is held by his brothers in Alpha Phi Omega, the Scouts and Scouters and the men and faculty of Lafayette College as well as the community at large is testimony of his fine character, loving nature and interest in the youth of our time.

Having lived a rich and rewarding life so far, we are confident that he will continue to work in his same unselfish manner even though he is now enjoying his "years of retirement," for, in his own philosophy of life he states, "The most satisfactory experiences of life are obtained by being of service to others, especially helping others to learn to know the joys and satisfactions. Alpha Phi Omega furnishes a great opportunity for such service."

Brother Frank R. Horton, founder and first national president of Alpha Phi Omega, has paid high tribute to the aid, cooperation and leadership given by Brother Hatch in the establishment of Alpha Chapter and in spreading AΦΩ to other campuses. As one of the original faculty advisors, the work of Brother Hatch was a strong factor in the early development of the fraternity and he has continued actively throughout the twenty-six years' history of our organization.

We pause to honor Dr. D. Arthur (Danny) Hatch.

Junior Leaders Training Conference

By Dick Borrud

Corresponding Secretary, Iota Beta Chapter
Pacific Lutheran College

The members of the Iota Beta Chapter have found out from practical experience how "Teamwork Makes Touchdowns." We are referring to the fun we had in working with the Rainier Council of the Boy Scouts of America in sponsoring a Junior Leaders Training Conference on our campus. The council took care of the program and the advertising while AΦΩ took charge of preparing the college campus and facilities for use and also directly participated in the program.

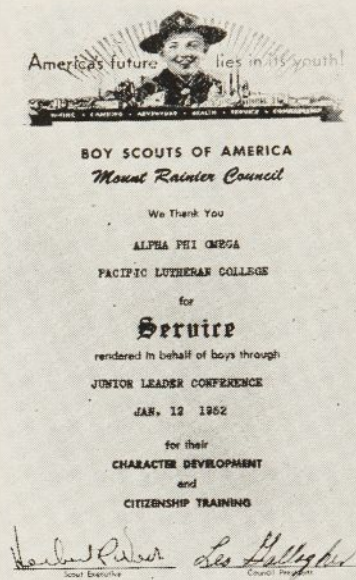
Naturally, in the Scouting program, the quality of leaders is essential for success. The leadership from the boys themselves must be such as will lead other Scouts to develop their skills and gain the full benefits from Scouting. The Boy Scouts are one of the greatest organizations for building youth into men of high standards and leadership ability. Its history has proven this as well as its witness in the lives of millions of boys and men. We know that the men behind the Iron Curtain are indoctrinating their youth in the ideals of Communism and world conquest. That just means that we have to be more conscious of our responsibility in building our youth into something that will lead our country and the world in the ways of liberty and truth, for if the quality of our youth and youth leaders falls, our country will fall with it.

The Junior Leaders Training Method supplements and strengthens training given within the troop. It provides a sort of booster shot in the arm for the troop leaders to improve their program of Scouting and to bring out the new methods and ways of training the other Scouts. The training conference is not only to train the patrol leaders and assistants but also the Scoutmaster and his assistants. We have found that a conference like this can be very effectively carried out when the members of Alpha Phi Omega and the Local Scout Council

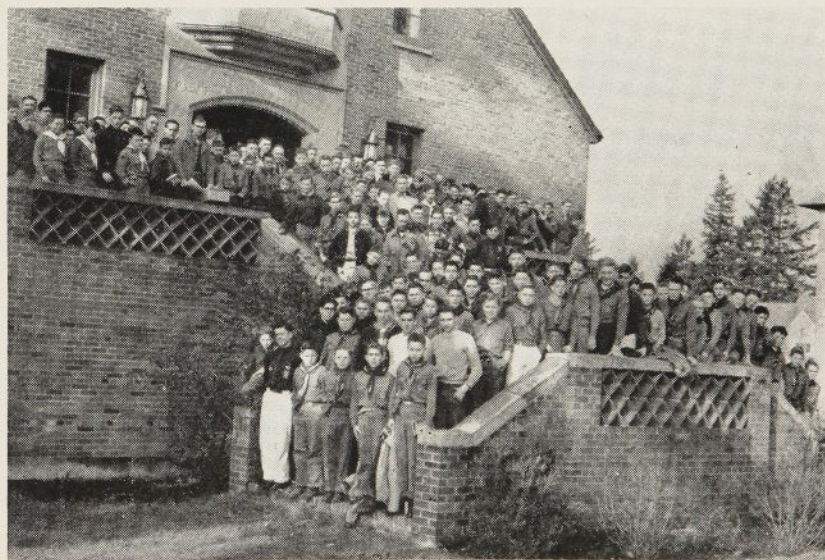
band together in sponsoring this type of service.

A few suggestions on the type of program put on by the Rainier Council of the BSA and our chapter on the Pacific Lutheran College campus will possibly help you and your chapter to arrange and carry out a similar conference. The Rainier Council, like many other councils, saw the need for strengthening its junior leaders and inspiring the local troops on to greater things. As a result, they decided to sponsor a conference for training their leaders. Of course, the problem immediately arose as to where to find a suitable place to have the conference without great expense and the difficulty of arrangement that such a program would require? This is where AΦΩ fits in so perfectly. The college campus is the ideal place for putting on this program with the number you would usually have attending. The

(Continued on page ten)



This certificate was received for
sponsoring the conference.



Here is shown the fine group of Junior Leaders of the Rainier Council, Boy Scouts of America, who attended the first training conference on the campus of Pacific Lutheran College, conducted by Iota Beta Chapter of Alpha Phi Omega. It was a great success, and thoroughly enjoyed by all. Similar training meetings have been conducted by several other chapters, and this is recommended to all chapters as a very useful service project.



Student Book Aid

In February, GAMMA OMICRON CHAPTER at *Queens College* again made history on the campus by starting a student book aid, whereby any student who cannot afford to buy textbooks may borrow them from the school. The women's service league of the college, GAMMA PHI, is collaborating in this, reports Harvey Alter, Vice-President.

Book Exchange

Brother David B. McKelvey, Corresponding Secretary of IOTA XI CHAPTER, reports that the activities and projects which the chapter has engaged in this past year have put ALPHA PHI OMEGA in a top position at *Edinboro State Teachers College*. The book exchange brought an exceedingly high regard for the organization by students and faculty alike.

Aid to "Campus Kitty"

THETA GAMMA CHAPTER at *Hendrix College* reports a very successful Ugly Man Contest from which the proceeds have been given to the "Campus Kitty," a fund used for charitable donations. Another money-raising activity of the chapter is selling sandwiches in the dormitory two or three nights a week. This news is from William E. Wilson, Jr., President.

Aid to a Blind Student

At the beginning of the Spring semester a blind student enrolled at *Texas Christian University*. GAMMA KAPPA CHAPTER took over the job of taking him to his classes. After a week he was familiar with the locations of classrooms and his Seeing Eye dog was able to guide him.

FIRE CHECK AT ALFRED UNIVERSITY



Blood Doning

In a blood drive sponsored by ALPHA THETA CHAPTER, 249 pints were given by students and faculty of the *University of Omaha*. This is reported by Barney Kadis, President.

Scout Swimming

ALPHA SIGMA CHAPTER at the *University of Nebraska* provides swimming instruction for Scouts once each week at local high schools. This was reported by Jim Chapman, Past President.

Leadership Training

The PHILADELPHIA AREA ALUMNI CHAPTER provides men for staff jobs one week end each month at the Breyer Training Area for Scouts and Leaders. This is reported in the chapter newsletter.

Shown here inspecting a fire extinguisher are six members of Epsilon Gamma Chapter. In front are Robert Abel, Henry Nachbar, Creighton Riordon and Thomas Skinker. Standing are Allen Hankins and Richard Sigafos. In all about thirty members participated in surveying the campus for fire hazards. The fire chief of Hornell provided check sheets and the chapter inspected eight fraternity houses, four sorority houses, nine dormitories and nine classroom buildings. After the work was completed a detailed report was turned in to the administration. Don Dalrymple was in charge of the Fire Check and prepared the report on the conditions which were found. This news is from Wilson P. Bailey, President.

35,000th Member of Alpha Phi Omega



Richard G. Updegraff

The 35,000th member of Alpha Phi Omega was recently registered in our National Office. He is Brother Dick Updegraff who was initiated in latest pledge class of Alpha Beta Chapter at The Pennsylvania State College. He is a sophomore and his home town is Warren, Pennsylvania. Dick is an Eagle Scout and member of the Order of the Arrow.

High School Seniors Visit Campus

DELTA SIGMA CHAPTER of the *University of Connecticut* recently conducted a tour for a group of seniors from New London high school who visited the campus.

Books to the Philippines

BETA EPSILON CHAPTER of *Iowa State Teachers College* has recently conducted a drive to collect books, magazines, periodicals and recreational equipment to be sent to the Allied Reading Club, School of Commerce, Alcala, Pangasinan, Philippines. The March of Dimes was handled by the chapter, collection being made at a basketball game. Also, a monthly blood donation drive is sponsored by the chapter in collaboration with other campus organizations. This is reported by Richard Rossmann, President.

PILGRIMAGE TO BIRTHPLACE OF ALPHA PHI OMEGA

The chapters in Philadelphia have made plans for a pilgrimage to Lafayette College to honor Alpha Chapter of our fraternity. This was instigated at a recent informal meeting of Delta Zeta Chapter, Zeta Theta Chapter, Zeta Iota Chapter and the Philadelphia Area Alumni Chapter.

The dates of April 26 and 27, 1952, have been selected. All chapters are invited to send representatives. Because of distances involved, this meeting will probably be attended just by Eastern chapters, but those who are present will express the tribute of our entire fraternity to the founding chapter.

The program for the two days will include a "Mr. Anthony" session on chapter program and problems Saturday afternoon, a songfest and entertainment Saturday evening, a chapel service Sunday morning, and a banquet and ceremony Sunday afternoon.

The registration fee of \$3.00 will include the banquet. Accommodations for Saturday night may be secured at the Easton Hotel at \$2.50 per person, and brothers who are members of social fraternities may find accommodations at their local chapter houses.

Further information may be secured by writing to Benjamin F. Fay, President of Zeta Theta Chapter, 6029 Charles Street, Philadelphia, Pennsylvania. Those who are planning to participate are asked to notify Ben in advance.



By Joseph Scanlon

1. Where is your chapter charter?
2. What is a suitable place in which to display the charter?
3. What is the meaning of the charter?
4. Does Alpha Phi Omega issue a new charter annually to each chapter?
5. Why is it important to display the charter on the campus?
6. Do you carry your identification card?
7. Where is your own membership certificate?

ANSWERS ON PAGE 11



JUNIOR LEADERS TRAINING CONFERENCE

(Continued from page seven)

auditorium could be used for the group gatherings, the classrooms for the small discussion groups and possibly the gym or the football field for the displays and demonstrations of Scout activities. Our chapter saw the valuable service to be rendered and responded to the opportunity.

Naturally, the Scout Council had many things to do in preparation for the program, but I am sure you are more interested in the part the fraternity played. We first of all got the schedule of events from the council and talked over the objectives with them. Secondly, we contacted the school authorities for a suitable date on the school calendar and the availability of the school facilities. We arranged for the auditorium in the Student Union, a number of small classrooms, and for the use of the gym. The dietitian was contacted to make arrangements to feed the Scouts. Next, we posted signs on the rooms for the various project meetings that were to take place there. The day before the conference, we covered the gym floor with heavy paper to prevent damage and then in the evening, all the fellows gathered to paint signs. Besides the many signs for directing the Scouts, we also posted slogan signs all along the walks with such mottos as: "Enthusiasm is contagious," "He who would lead must also follow," and "He who gets ten men to work is greater than he who does the work of ten men." It was a lot of fun just getting together and painting the signs. A fine fellowship in working together that typifies the spirit of AΦΩ.

The day of the program came and we arose bright and early to make sure everything was ready and the last-minute details completed. Then the Scouts started coming. A couple of our boys did the registering of the participants as they arrived in the lobby of the Student Union. They were then ushered into the auditorium where a fine Scouting movie was shown from 9:00 to 10:00. Following the movie, the group had a short orientation program, and a typical

Green Bar meeting was put on as a demonstration of the spirit of the affair. Our program had to be tuned from the starting gun to the enthusiastic, fast-moving interests of the Scouts. From 10:45 to 12:30 all the Scouts split into patrol discussion groups on various subjects such as: projects, meetings, and organization. The Scoutmasters at the same time were grouped together with the older boy leaders discussing some methods and special project plans for the troops in the coming year. Then came lunch time where we all gathered in the college dining hall for a meal and some fine fellowship.

At 1:30, we had all the participants go to the gym for a display of new equipment and demonstrations on new methods of teaching Scouting skills. These had all been set up previously. Some of the fellows in AΦΩ had an active part in demonstrating new methods of teaching first aid which was interesting and impressive to everyone. All sorts of Scout activities were covered in the displays and the boys had a very enjoyable time. At 3:00 there was another session of discussion groups, but this time they were broken up into rank, such as all the Scoutmasters going to one meeting and all the patrol leaders going to another. The closing for the day's program was from 4:00-5:00 at which time we had a pep rally, a sing, and some stunts. We thought the day to be of great value and lots of fun as did the Scouts themselves. I am sure it served its purpose even better than we expected.

There could be many variations of the Leadership Training Conference depending on the particular needs and facilities. It might be possible even to extend the time and make it a two-day affair. The main thing, however, is that there is a real need and AΦΩ can meet this need by taking the lead in helping the Scouting program in this way. Why don't you plan an event of this type with your local Scout Council? Offer them your services. I am sure that you will find, as we have here at Pacific Lutheran, that "Teamwork pays off." Besides the fun and fellowship involved in this project, you will be rewarded with the satisfaction of a job well done in serving youth, your community, and your nation.

ON OUR COVER

Each year, Eta Nu Chapter at St. John's University presents a trophy to the outstanding senior of the university. The selection is made by a committee of students and faculty on the basis of Leadership, Scholarship and Service. In addition to the trophy to the winner, the next nine highest in the judging are given certificates of merit. This project was started at St. John's upon the suggestion of Brother George H. Charno and the trophy is annually donated by Brother Charno. In the picture on our cover is shown the 1951 winner, William Weiler (left) receiving the award from Ramon E. Thomes, who was then President of Eta Nu Chapter.

Interchapter Council

The Bay Area Interchapter Council of ALPHA PHI OMEGA has been established by the chapters in the Bay Area of California. About two years ago these chapters began an informal organization. This included ZETA CHAPTER of *Stanford University*, GAMMA BETA CHAPTER of *San Jose State College*, ETA ALPHA CHAPTER of *University of Santa Clara*, and GAMMA GAMMA CHAPTER of *University of California*. Last year, IOTA PI CHAPTER was chartered at *City College of San Francisco* and IOTA PHI CHAPTER at the *University of California at Davis* and these two joined the council.

Maurice Clapp of GAMMA GAMMA CHAPTER has been chosen as Interchapter coordinator, Dana Newton of ZETA CHAPTER is Treasurer, and Dan Marshall of GAMMA BETA CHAPTER is Secretary. Athletic contests and social events are sponsored by the council and provide interchapter fun and fellowship. This is reported by Chris Bell, Historian of GAMMA GAMMA CHAPTER.

Vote Service

GAMMA KAPPA CHAPTER at *Texas Christian University* is aiding the League of Women Voters in their campaign to encourage people to pay the poll tax. Through this campaign a great increase is expected in the number of people of the city who are eligible to vote. The chapter is also busy with numerous other projects, reports Donald Stathern, Jr., Secretary.

Showing Movies

At the *University of Chattanooga*, ZETA ETA CHAPTER has been able to cut some of the red tape in getting movies shown the campus. The chapter is now in charge of all requests for movies by teachers, groups and organizations. This is reported by Bruce Wallace, Secretary.

"Save Our Grass"

A big Spring project at *Michigan State College* is the "Save Our Grass" campaign conducted by BETA BETA CHAPTER. Another top project this term is the Ugly Man Contest from which the proceeds will go to the Campus Chest. This is reported by Bob Schneider, Corresponding Secretary.

Paving Job

EPSILON PHI CHAPTER has received a fine letter of appreciation from the faculty of *Youngstown College* for work done in paving a ramp leading to a parking area and paving the driveway into the President's home. The letter expressed gratitude for the thoughtfulness and service ideals which the chapter has exemplified in so many ways. This is reported by Glen R. Allen, Corresponding Secretary.

Directional Signs for Campus

DELTA ETA CHAPTER has earned money through an Ugly Man Contest for use in erecting directional signs on the campus of *Oregon State College*. In future years the proceeds from the contest will be used for other purposes. The chapter will handle registration of

visitors during Mother's week-end, conduct a vocational tour of the campus for Explorer Scouts, aid in the Red Cross blood drive and other projects this Spring, reports Arthur Chiu, Historian.

Radio Program

IOTA LAMBDA CHAPTER at *North Carolina State College* has prepared a fifteen-minute radio program to be broadcast over the local stations to acquaint the public with Alpha Phi Omega. The March of Dimes was very successfully conducted and the chapter has started a "Share the Ride" bureau for the benefit of students who desire rides at the end of school terms. Construction of bulletin boards at strategic points on the campus is also a chapter project, reports Donald A. Vienne, Corresponding Secretary.

Answers to APO Quiz for March

1. Only your own group can answer this question. If you don't know the whereabouts of your chapter charter, we suggest you search for it so it may be properly displayed.
2. If you have a chapter room or office, the charter should hang on the wall. A chapter without such quarters could display its charter, upon request and acceptance, in the Dean's office or in the office of the Chairman of the Advisory Committee, or in some other location deemed suitable by the members. The charter should be framed so it will be kept in good condition.
3. The charter is your authorization to function as a chapter of Alpha Phi Omega on your campus. It should be preserved as an official document.
4. No. Each chapter charter is permanent, unless it is withdrawn for due cause.
5. It is important to display the charter so all new pledges and new members will have opportunity to see it and realize its significance, and to honor the founders whose names are inscribed on it.
6. The pocket card is your identification as a member of Alpha Phi Omega. Active members, alumni and advisors are invited to carry their cards permanently.
7. The certificate of membership issued to all who have been initiated as actives or advisors is for display on the wall of your room. It proclaims to your fellow students and friends that you are affiliated with Alpha Phi Omega. Display it with pleasure and honor!

INSIGNIA OF ALPHA PHI OMEGA



Pledge button (shown above at top left).....	.35
Service button (top right).....	.35
Standard badge, gold plated (extreme left, middle row).....	2.50
Standard badge, 10K (second from left, middle row).....	6.50
Standard badge, crown set pearl center plain arms (third from left, middle row).....	13.25
Standard badge, crown set pearl center and arms (extreme right, middle row).....	24.50
Standard key, gold plated (extreme left, bottom row).....	3.25
Standard key, 10K (second from left, bottom row).....	8.50
Standard key, crown set pearl center plain arms (third from left, bottom row).....	15.00
Standard key, crown set pearl center and arms (extreme right, bottom row).....	26.00

(To all prices add 20 per cent federal tax, and state sales tax.)

Official order blanks are available from your Chapter Treasurer or from the National Office.

BULLETIN BOARD

ELECTIONS

April is election month in Alpha Phi Omega, in accordance with the semi-annual schedule set forth in the National Constitution. Officers may be re-elected once if so desired by the chapter.

Election in April will give your new officers full opportunity to become acquainted with their jobs before the close of the Spring term.

Study carefully the qualifications of each candidate, in an effort to select the most capable man for each job. Then it is recommended that a joint meeting be held of old and new officers to study their responsibilities.

WORLD ALMANAC

In the 1952 Edition of the World Almanac, Alpha Phi Omega is listed on page 576.

The almanac contains an extensive section on colleges and organizations. It includes a complete list of senior colleges, teachers colleges, and junior colleges, showing enrollment figures and names of governing officials.

It also includes a roster of fraternities and sororities, professional organizations, honor societies and recognition societies.

Alpha Phi Omega is the only organization designated in the Service classification.

PROJECTS

A week end at the Scout Camp to help get the facilities ready for the summer season would be of great value to your local council. This can be an interesting outing for the members as well as rendering service.

Commencement service has long been a project in many chapters, aiding with ushering and other details.

Blood donating is another important project. Contact your local Red Cross about having a mobile unit come to your campus.

Now, in the Spring term, is an opportune time to plan for your chapter's aid during Fall registration and orientation of new students.

EXTENSION

Since the previous issue, four petitions have been received for new chapters of Alpha Phi Omega. They are from the following locations:

Johns Hopkins University, Baltimore, Maryland.

Southern University, New Orleans, Louisiana.

Wisconsin State College, LaCrosse, Wisconsin.

Wagner College, Staten Island, New York.

These groups are now being voted upon by the chapters and executive board members for admittance into the fraternity.