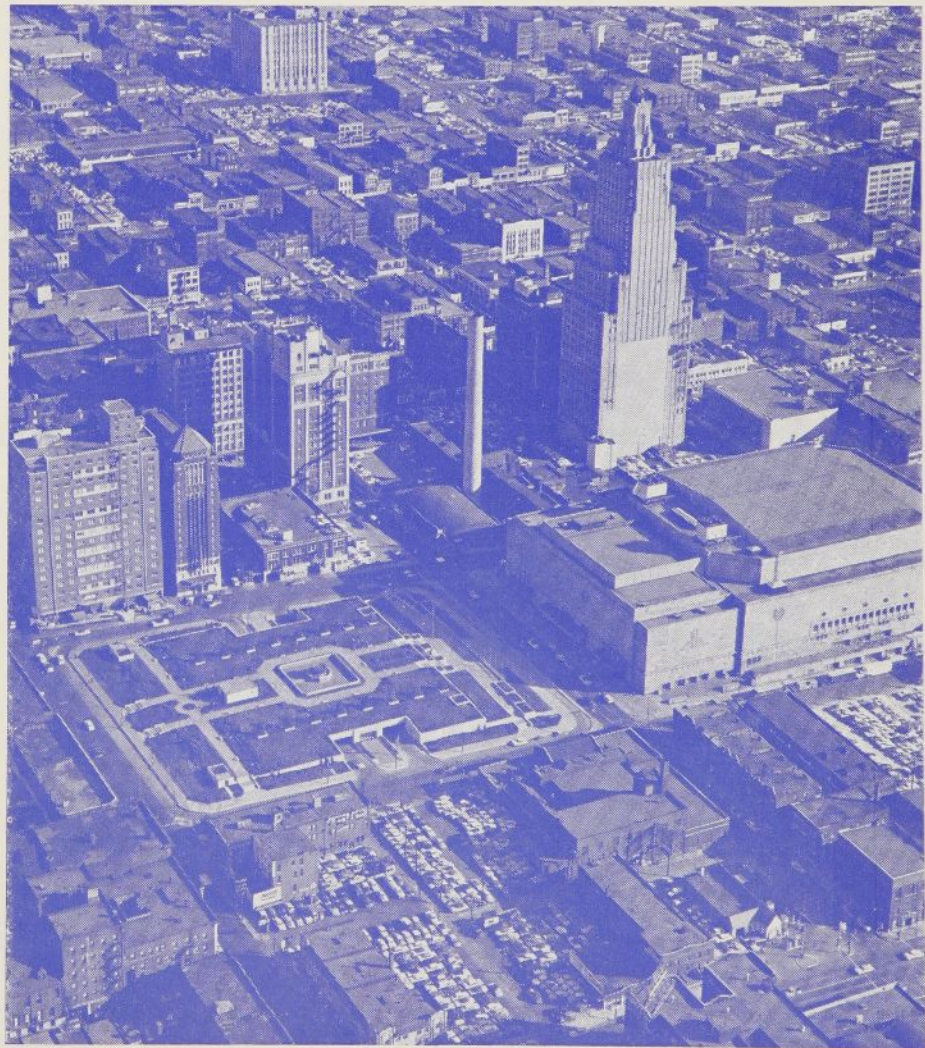
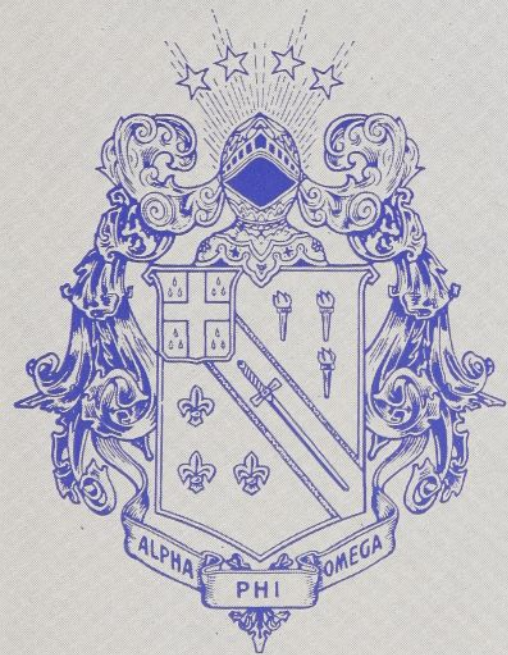


TORCH AND TREFOIL



MARCH, 1961

LET'S GO TO KANSAS CITY IN 1962

TORCH and TREFOIL

Volume 36, No. 2

March, 1961

National Officers of Alpha Phi Omega

William S. Roth Raleigh, N. C.
National President

E. Ross Forman Philadelphia, Pa.
National First Vice President

Dr. Lester R. Steig Palo Alto, Calif.
National Second Vice President

Rev. Frans A. Victorson St. Joseph, Mich.
National Third Vice President

Manfred O. Aws, Jr. Columbus, Ohio
National Treasurer

Joseph Scanlon Kansas City, Mo.
National Executive Secretary and Editor

J. D. (Jack) Armstrong Greeley, Colo.
Elmaar H. Bakken New Brunswick, N. J.
Prof. Harry C. Barnett East Lansing, Mich.
Dr. Glenn R. Barr Oxford, Ohio
Dr. H. Roe Bartle Kansas City, Mo.
R. L. Brittain Auburn, Alabama
George F. Cahill New York, N. Y.
C. J. Carlson Riverside, Calif.
Prof. Daniel Den Uyl West Lafayette, Ind.
M. R. Disborough Louisville, Ky.
Benjamin F. Fay Philadelphia, Pa.
Dr. Thomas T. Galt Spartanburg, S. C.
Irwin H. Gerst Canoga Park, Calif.
Zenon C. R. Hansen Oak Park, Ill.
Robert J. Hilliard Lubbock, Texas
Dr. Lawrence L. Hirsch Chicago, Ill.
Frank R. Horton Bangor, Pa.
Dean Lewis N. Jones Lubbock, Texas
Stanley Livingston Ruleville, Miss.
H. Jack Mayr Milwaukee, Wisc.
Dr. Henry S. Miller
Huntington Station, N. Y.
Sidney B. North Evanston, Ill.
Dean Arno Nowotny Austin, Texas
Dean Glen T. Nygreen Kent, Ohio
Rev. Robert J. Payne Mt. Vernon, N. Y.
Gerald M. Plessner St. Louis, Mo.
Dr. Harold F. Pote La Jolla, Calif.
Prof. Kent D. Shaffer Pittsburgh, Pa.
Robert L. Slater, Jr. Chicago, Ill.
A. G. Spizzirri Kansas City, Mo.
Ronald R. Turgeon Bridgeport, Conn.
Dr. Delmer H. Wilson
New Brunswick, N. J.
Dr. Ray O. Wyland Tujunga, Calif.

TORCH AND TREFOIL is issued regularly seven times a year, monthly, October through May except January from Office of Publication, 1100 Waltower Building, 823 Walnut Street, Kansas City 6, Missouri. Printed by Smith-Grievess Company, Printers & Lithographers, Kansas City, Missouri. Second Class Postage paid at Kansas City, Missouri. Subscription price \$1.00 per year.

EDITORIAL STAFF

Joseph Scanlon, Editor and National Executive Secretary. Gerald M. Plessner, Associate Editor. Contributing writers, Manfred O. Aws, Jr., E. Ross Forman, Thomas E. Walsh, Frank A. Ward II, Terry Shoemaker, Otis Shearer.

ABOUT OUR COVER . . .

Kansas City, Missouri, site for the 1962 National Alpha Phi Omega Convention, is one of America's friendliest cities. "The Heart of America" is captioned by its Mayor, The Honorable H. Roe Bartle, Past National President of Alpha Phi Omega. The greater metropolitan area of Kansas City, which includes both Kansas City, Kansas, and Kansas City, Missouri, has a population in excess of 750,000 persons. Its beautiful municipal auditorium, one of America's finest and largest, hosts the NAIA and the NCAA national basketball tournaments. Alpha Phi Omega's national service office is located in Kansas City. Begin setting aside a chapter convention fund now.

The magnificent aerial view of this great metropolitan city appearing on our cover does justice to its vital downtown area, showing its progressive parking system and modern buildings. Its vast suburban areas and outlying shopping districts are fitting support for an exciting city!

1. On Our Cover . . . Kansas City

2. Table of Contents . . .

3. Service and the Clique

As Dean of Students at Kent State University, Dr. Nygreen has had firsthand experience with campus organizations. Now a member of our National Executive Board, Dr. Nygreen's opinions on this topic are most vital!

4. SERVICE FRONTIERS . . .

Alpha Phi Omega in Action! A review of recent achievements of some of our chapters with emphasis on new ideas.

5. Alpha Phi Omega in Action

An Explorer Visitation Day—Raising funds for charity—Honorary memberships.

6. New National Executive Board Members . . .

Meet the latest additions to our national leadership team. You'll be seeing a lot of these men at Sectional Conferences and Leadership Seminars.

7. Feature Chapter—Texas' Alpha Rho

Sectional Correspondent Otis Shearer tells why Alpha Rho has for years been a leader among Alpha Phi Omega chapters.

9. Alpha Phi Omega Sectional Map

10. Outstanding Alumnus . . .

10. Good Photographs . . .

Study this article and increase the chances of your news photographs being used, not only in Torch and Trefoil but in other news media, too!

11. On to Kansas City!

First report on our next National Convention site, Kansas City, Missouri.

12. Chapter News

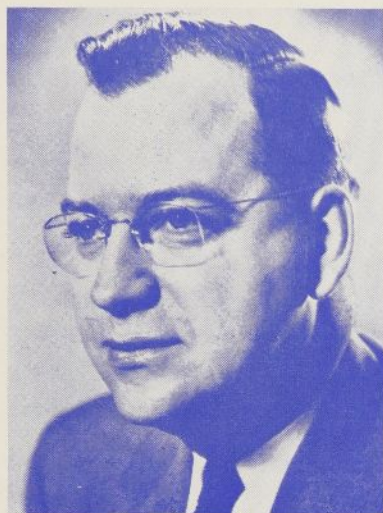
Service and the Clique

by

Dr. Glen T. Nygreen

Member, National Executive Board

Dean of Students, Kent State University, Ohio



Dr. Nygreen

SERVICE AND THE CLIQUE

The unabridged dictionary is a wonderful treasure-house of knowledge. Take, for example, the word *service* which means so much to us in Alpha Phi Omega. Its root is in an old Anglo-Saxon word meaning *to slave*. Thus an original but now archaic meaning of *service was to be in bondage*.

Archaic? Not always, and not often enough. Take a close, hard look at your own Alpha Phi Omega chapter. Are you in bondage to some special group or attitude or pattern of behavior on your campus? Far too many of our chapters talk big about "service to others" but close their minds to new ideas and shut the doors of membership to people outside their own friendly clique.

Let's face the fact that democracy is not an easy way of life. It gives every man the privilege of voting, of being in effect a ruler. It requires of every man that he be responsible for the welfare of the group and of his fellow citizens, as well as for himself. The easy way is to let someone else carry the responsibility while we enjoy the benefits of his work. The hard way is to get in and work, to study

Dr. Glen T. Nygreen is Dean of Student Life at Kent State University, Kent, Ohio, and Associate Professor of Sociology there. He obtained the degree of Doctor of Philosophy in Sociology from the University of Washington, Seattle.

Dr. Nygreen is a member of the Executive Board of the Akron Area Council, Boy Scouts of America. He is a Rotarian, a Congregationalist, a Navy veteran of World War II, and is serving as Conference Chairman for the National Association of Student Personnel Administrators for 1959-1962. He is Eminent Supreme Warden (Supreme Council) of Sigma Alpha Epsilon.

the needs of others, and with and through other people achieve the goals the group has set for itself.

In Alpha Phi Omega, we have an open-door membership policy. All we ask of a prospective member is that he subscribe to our goal of service and to the principles embodied in the Scout Oath and Law. Do we ask to what other groups a man belongs? Do we ask his religion or consider his skin? Does it matter which political faction on campus he supports? Do we reject an applicant because of some superficial personality trait or mannerism?

One good way to check up on yourselves is to ask a variety of campus leaders how they perceive of your Alpha Phi Omega chapter. Here is a suggested list of ten people you ought to ask to speak frankly about how they perceive of Alpha Phi Omega as it operates on your campus today, either to the chapter executive committee or to the entire chapter at a regular meeting:

- Student Body president
- IFC president
- Panhellenic president
- Men's Inter-dorm Council president
- Women's Inter-dorm Council president

Associated Women Students president

Associated Men Students president

Campus newspaper editor

Dean of Men

Dean of Women

Can you predict in advance what these people will say? Perhaps you expect the IFC president to call you a stronghold of anti-fraternity sentiment. If so, your actions must belie the classification we give ourselves of a service fraternity. Or perhaps the independent leaders will call you a junior inter-fraternity council because independents are shut out. If so, then your practices run counter to our open-door membership policy, a truly democratic concept. Ask and listen to the responses. You will be surprised at what you will learn.

If you want Alpha Phi Omega to be a valued service group on your campus, then you must seek to be a representative cross-section of the male students on your campus. This takes alertness and sound planning by your membership committee. It requires analysis each academic term of your chapter membership. Become an island for members of one segment of the campus population and your chapter will lose not only recognition and avenues for meaningful service but the fun and profit of broad associations.

"Take in a clique and a clique will take you out." This old fraternity saying has good advice for Alpha Phi Omega. If you make your chapter the servant of any one particular interest on campus, then you are "in bondage." Far better to be a part of the broader community, for this opens the way to a meaningful leadership experience for every member. Persist in the way of the clique, either by intent or through carelessness, and your chapter is on the road to extinction.

The modern meaning of the word service is "to be of use, to answer a purpose." In terms of the democratic spirit of Alpha Phi Omega, do you meet this definition? Does your chapter?

SERVICE FRONTIERS . . .

Leadership Seminar Success Story

by

**J. Cabot Gupton, Sectional Correspondent
President, Mu Mu Chapter
Oglethorpe University, Georgia**

Rainy weather in Atlanta, Georgia, on February 18 did not dampen the spirit of the Leadership Seminar held at Emory University! More than sixty delegates, representing six chapters and one petitioning group, gathered to participate in an excellent program led by Co-Chairmen Tom Burgess and Lester Dollar.

Outstanding presentations were the rule of the day and all participants were impressed with the quality of the instructors and of the material presented. Session instructors were: Penny Jones, Mu Mu; Phil Ellwanger, Gamma Zeta; Douglas Chatham, Beta Zeta; Cabot Gupton, Mu Mu, and W. N. Cox, Gamma Zeta.

The keynote address on "Being a Leader!" was presented by National President William S. Roth, who, in closing his address, stated, "On the summit are the goals that guide men's actions. Among those goals the principles of Leadership, Friendship and Service rank high. We in Alpha Phi Omega must do things on our campuses that have never been done before. Don't be satisfied with a 'good' job—strive for a superb job. Prove in every student's mind that we in Alpha Phi Omega are truly leaders."

DON'T MISS YOUR SEMINAR!

April 22—FLORIDA CHAPTERS—Host: Iota Rho Chapter, Florida State University, Tallahassee, Florida. Franklin Chase, Chairman

April 29 — EASTERN MISSOURI-SOUTHERN ILLINOIS SECTION—Host: Theta Xi Chapter, Parks College of St. Louis University, East St. Louis, Illinois. Robert Anderson, Chairman

April 29—IOWA SECTION—Host: Mu Rho, Upper Iowa University, Fayette, Iowa. Dr. Eugene E. Garbee and Richard Harrington, Co-Chairmen.

May 13 — WESTERN PENNSYLVANIA-WEST VIRGINIA SECTION—Host: Kappa Chapter, Carnegie Tech, Pittsburgh, Pennsylvania. Professor Kent D. Shaffer, Chairman

Pledges Give Orphans Party

by

**Gary Wilson, Recording Secretary
Gamma Theta Chapter
University of Colorado, Boulder**

The fall pledge class of Gamma Theta Chapter chose as their big pledge project an Orphan's Christmas Party. Twenty children from a Denver orphanage were brought

to the campus for the December party. The Tower Room of the University Memorial Center was filled with excitement as the children made ornaments to decorate the Christmas tree and were served refreshments. The afternoon was highlighted by a visit from Santa Claus who received a report of what each child wanted for Christmas and gave each a toy.

Lambda Omicron Has Traffic Control Project

by

**James Bennett, Corresponding Secretary
Lambda Omicron Chapter
West Virginia University, Morgantown**

A concentrated campaign to correct campus traffic congestion was conducted by Lambda Omicron Chapter at West Virginia University. Brothers and pledges passed out maps to motorists showing alternate routes away from the main campus. All drivers were urged to use the alternate routes.

The campus project was held in cooperation with the Morgantown Chamber of Commerce and city officials. More than 5,000 maps were distributed. Danger to pedestrians and the slow movement of automobiles had necessitated the traffic campaign.



"I want a dolly for Christmas." Activity hummed at the Orphan's Christmas Party given by the fall pledge class of Gamma Theta chapter.

Alpha Phi Omega in Action!



Group of interested Explorers gathered around a demonstration in the Electrical Engineering Building of Lehigh University at Alpha Psi's Explorer Visitation Day.

Alpha Psi Explorer Visitation Day

by

Harry L. Rinker, Chairman

Alpha Psi Chapter, Lehigh University, Pennsylvania, held its fifteenth annual Explorer Visitation Day in December, 1960. More than 1,100 Explorers from all of New Jersey and the eastern half of Pennsylvania converged on the Lehigh campus at Bethlehem for a full day of fun and festivities. In the morning the Brothers and pledges led the Explorers on tours of the campus. The various departments of the University cooperated by putting on several interesting demonstrations. The highlight of the day was an excellent chemistry demonstration in which Explorers were introduced to the practical uses of hydrogen, oxygen and various other materials.

After lunch the Explorers were guests of the University for the Lehigh-Davidson football game. The Lehigh band also cooperated with Alpha Psi by performing a pageant along the lines of Scouting.

Alpha Phi Omega is interested in hearing from other chapters who conduct similar programs. Send us a story of your program along with a few good photographs.

Brothers vs. Disc Jockeys for Charity

by

Steve W. Milburn, Vice President
Beta Nu Chapter, Northeastern State College,
Tahlequah, Oklahoma

Beta Nu chapter at Northeastern State College, Tahlequah, sponsored the 1961 March of Dimes campaign for the entire Cherokee County. The highlight of the drive was a basketball game between the Brothers and disc jockeys from Tulsa radio station KAKC. The fun-filled game raised

\$276.50 with the dee-jays paying their own expenses to and from the game. Led by Beta Nu president Frank Whatley, the APO team won, 44 to 42.

Light Bulbs = Big Profits

by

Roger Hanson, Projects Chairman
Zeta Alpha Chapter, Bradley University

Zeta Alpha Chapter, Bradley University, Peoria, Illinois, undertook the sale of light bulbs door to door as a money-raising project to secure funds for their delegation to the National Convention. The chapter made a total of \$400 by selling over \$1,000 worth of standard 600- and 100-watt light bulbs in sets of eight bulbs each. The bulbs were sold at the usual store price and the chapter reaped a high 42% profit, making 84c on every two-dollar sale. The chapter worked only two Saturdays on this project.

To create competition, the chapter was divided into six teams, each team having a car and consisting of one driver and four salesmen. The two winning teams averaged \$36 worth of bulbs sold per man with the top salesman selling more than \$60 worth. The chapter's permanent meeting room was used as a headquarters, where the chapter treasurer and the project chairman coordinated the work.

It was soon discovered that sales were best in certain areas of the city. These sections were the relatively new subdivisions of Peoria's north side, where many young families live. Sales were at a peak around 11:00 o'clock each morning. None of the workers suffered serious damage from sticking their feet in doors, and the chapter is proud that no one received a black eye or a punch in the nose. A good sales approach really paid off. The best salesmen were enthusiastic and cordial with customers, and used an infectious smile as their surest means of attack. This activity provided a fine experience in working on a successful project that was of service to the Fraternity.

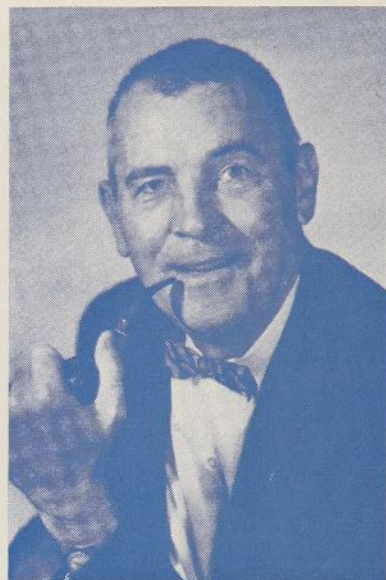


Dr. Robert L. Sumwalt, President of the University of South Carolina, and Dean of Students George W. Tomlin, are new Honorary Members of Iota Mu chapter of Alpha Phi Omega. From left: Charles Bradley, Chapter President; Dean Tomlin; President Sumwalt; William S. Roth, Fraternity National President, and Buford Hill, Scouting Advisor. Does your chapter award Honorary Memberships to deserving persons? It should!

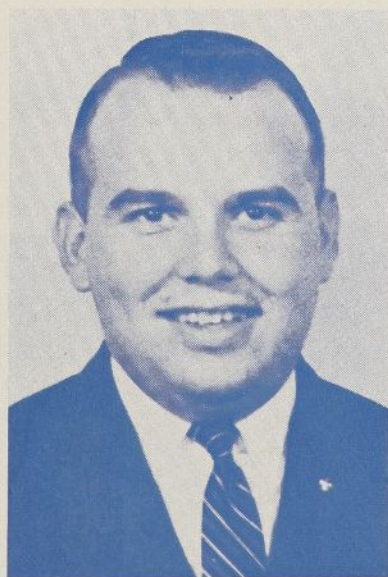
New National Executive Board Members



J. D. Armstrong is Scout Executive of the Long's Peak Council, Boy Scouts of America, Greeley, Colorado. He is an overseas veteran of World War II, and holds membership in the American Legion, the Rotary Club, and the American Campers Association. Mr. and Mrs. Armstrong are the parents of four children, three sons and a daughter. He is a graduate of De Pauw University and Past President of Alpha Upsilon Chapter there. His social fraternity was Delta Chi.



R. L. Brittain is manager of Magnolia Dormitories at Auburn University, Auburn, Alabama. He has been in college student personnel work since September, 1952. He is a 38-year Scout veteran, an Eagle Scout, and a Scout and Explorer leader and camp director. Delta Chapter hails him as its advisor. He holds degrees from the University of Georgia and Columbia University and belongs to the Elks Lodge, the Lions Club, Phi Kappa Phi and Phi Beta Kappa.



Ronald R. Turgeon attended St. Anselm's College at Manchester, New Hampshire, and graduated from Keene Teachers College, Keene, New Hampshire. He serves as Sectional Chairman for New England. He is District Scout Executive in the Pomperaug Council, Bridgeport, Connecticut, and is Past President of Eta Delta Chapter at Keene Teachers College. During his Army service he was Scouting coordinator at Fort Dix, New Jersey. He belongs to the Bridgeport Council of Social Agencies and is a Knight of Columbus.



Zenon C. R. Hansen is President and Director of Diamond T Motor Truck Company, Chicago, Illinois, and Executive Vice President and Director of the White Motor Company, Cleveland, Ohio.

He is a member of the National Executive Board, Boy Scouts of America. He is a Rotarian, a member of the Union League Club of Chicago, a Past President of the American Humanics Foundation, and serves as a Director of Salem College, Salem, West Virginia, and a member of the Citizens Board, Loyola University, Chicago.

Feature Chapter

TEXAS' ALPHA RHO

by Otis Shearer
Sectional Correspondent
Torch and Trefoil

Just as Texas is the largest continental state in America, so Alpha Rho at the University of Texas is the largest chapter in Alpha Phi Omega. An important reason for Alpha Rho's success is the spirit and pride of each Brother. The members of Alpha Rho are proud of being in a progressive organization and the chapter is highly regarded by The University of Texas officials and students.

There is a close feeling of Brotherhood in Alpha Rho, and this bond of friendship prevails in every activity. Chapter morale is high. The Brothers often sing at meetings and other fraternity gatherings and, most important of all, everyone will pitch in when work must be done. It is this quality that accounts for the interdependence and closeness among our Brothers.

Elmer T. Zilch, Jr., is the patron saint of Alpha Rho and he symbolizes to the Brothers the spirit of the chapter. The Chapter President is guardian of Elmer T. and David Couch, our current President, is doing a fine job of guarding Elmer despite the attempts of our pledges to make off with him. The spirit inherent in Alpha Rho helps to make every project a success and is a big reason for the unusual size of pledge classes.

Rushing Is Well Planned

The first step that Alpha Rho takes in its rush activities is to contact as many prospective male University of Texas students as possible before their arrival on campus. The Brothers make a practice of contacting their hometown friends who are coming to the University. Then Alpha Rho conducts two summer orientation sessions for incoming students. Through these initial contacts, many Freshmen have their first association with the chapter and are favorably impressed by what they see. An even greater asset to Al-

pha Rho's rush program is the part that the chapter plays in student registration. The chapter has the job of admitting all students into the registration area. Brothers act as traffic controllers and they conduct a registration information booth.

Prospect List Is Compiled

Brothers who have met prospective pledges through any of the above activities submit the prospect's name and telephone number to the Vice President in charge of rushing activities. Last Fall, Vice President Chris Heine-meyer used these names to make sure that all prospects were invited to one or both of the two Rush Meetings. These Rush Meetings were held on two consecutive Sunday afternoons. Having two meetings insured that every prospect had ample opportunity to visit the chapter and become familiar with the Fraternity. During Fall, 1960, rush activities, 225 men attended the Rush Meetings and of that number, 74 were given pre-pledge status.

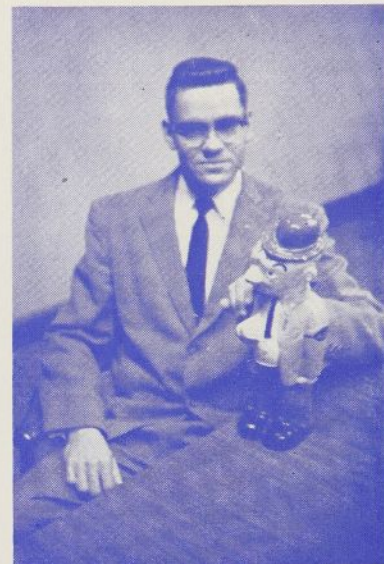
Pre-Pledge Status Is Trial Period

The 74 prospects were given pre-pledge status as a means of providing a trial period in which the prospect can decide whether or not he really wants to pledge the fraternity. During this time the men work on pre-pledge projects. These projects are similar to regular projects and they give the man a chance to see what the chapter is like and the chapter in turn has an opportunity to look over the pledge prospects.

After the pre-pledge period, the chapter votes on its pledges and, in Fall, 1960, 60 prospects were extended bids, of which 50 were finally pledged.

Few Men De-Pledge

Alpha Rho, by making sure its prospective Brothers know what they are



Elmer T. Zilch, Jr., is the patron saint of Alpha Rho and the responsibility for guarding Elmer from being kidnapped by pledges, falls on Chapter President David Couch. Brother Couch is the one with glasses!

getting into, cuts to a minimum the number of men who de-pledge. The chapter's pledge training program is designed to get the spirit of Alpha Rho into the thinking of each pledge and to create new Brothers who are ready to accept a full share of the service responsibility of the chapter.

Each pledge is required to work a total of thirty hours on at least ten projects. Each must pass examinations on Alpha Phi Omega history and on campus history and guide tour information. The pledges must take the guide tour exam because the chapter carries on an extensive guided tour program for university visitors.

Pledge Spirit High

Pledge Class spirit gets off to a good start at the Pledge-Active Picnic which comes about a week after the Pledging Ceremony. The Pledges are traditionally defeated by the Brothers at football to the score of 99 to 6. After the game the pledges elect their class officers, and then Brothers and pledges

(Continued on page 8)

alike gather at the table for wieners, cokes, and all the trimmings! The picnic is a great spirit builder in that it gets everyone together, creating new friendships and strengthening old ones!

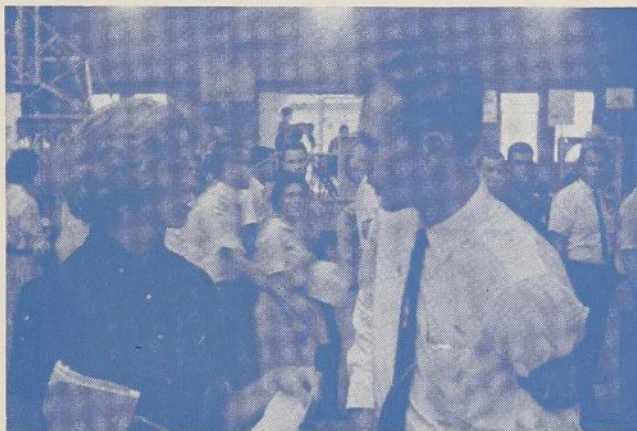
Our Initiation Banquet climaxes each semester. The pledges are formally initiated as new Brothers, a Texas-style steak dinner is served, presentations are made to outstanding Brothers, a guest speaker makes an after-dinner presentation (this year Joe Scanlon presented the keynote) and, in closing, the new officers are installed.

Leadership Emphasized

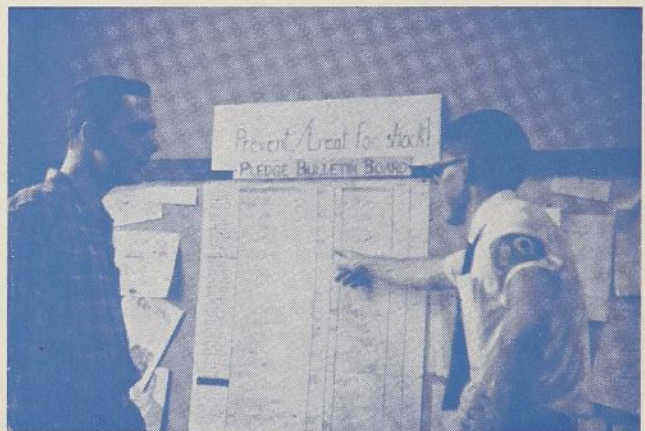
Alpha Rho emphasizes the role of leadership in the chapter. Soon after the semester begins, our old and new officers and our advisors gather for a leadership discussion meeting. The meeting is usually held at the home of one

Unusual Committee System

Alpha Rho has a new committee system which President David Couch started. Committees are created only when needed. In the place of the traditional committees, a Director organizes the activities in a specific area; for example, Brian Schenk now heads our Scouting Activities and appoints Brothers as Members-in-Charge of specific projects which are pre-approved by the Executive Committee and the chapter. The Member-in-Charge organizes the project and posts sign-up sheets in our chapter office. Some of our better projects that have been successfully handled in this new manner are Registration Service, Student Elections, helping in the Cerebral Palsy Center in Austin, and conducting Junior Leadership Training for the local Boy Scout Council. Through its large variety of projects, Alpha Rho has always been a leading chapter in terms of man-hours of service.



Information services at school registration is an important service rendered by Alpha Rho at The University of Texas. Here we see Brother Lee Basore giving directions to one of the lovely Texas co-eds.



Sectional Correspondent Otis Shearer, on the right, discussing information posted on the chapter's Pledge Bulletin Board, a handy aid in the coordination of a large chapter.

of our Advisors and the Fellowship Chairman provides the food and other refreshments, the meal usually being quite light.

After the meal, a retiring officer leads the discussion by starting with the President's job and working across the list until all the officers are covered. The discussion leader asks for helpful suggestions from the "old pros" to the new officers. Then the new officers summarize what they intend to do while in office. Finally, the officers of the past semester write out reports which, when combined with the reports of past years, serve as a rich source of reference for new leaders.

Usually, the retiring officers discuss their accomplishments and how the new officers may profit by their mistakes. For example, Chris Heinemeyer, last semester's Fellowship Chairman, wrote out a report showing how much money was spent for social activities, where food was obtained, and who to check with when reserving the Park for the Pledge-Active Picnic. Through this meeting, the incoming officers of Alpha Rho get to know the scope of their job and the way to get it done.

Every chapter should have a newsletter and Alpha Rho's newsletter is the ARAPOUT. ARAPOUT stands for Alpha Rho of Alpha Phi Omega at the University of Texas. The newsletter reports on chapter activities, individual achievements in the chapter, jokes that have been going around, and anything else the chapter editor, this year Bobby Lloyd, deems appropriate.

Advisors Are Important

Alpha Rho would be handicapped without its excellent advisory participation. Advisors serve only as their name indicates—for advice! And advice is certainly plentiful with Arno Nowotny, a Past National President of Alpha Phi Omega, serving as an Advisor along with a host of other equally competent men. This year's Chairman of the Advisory Committee is Colonel George W. Porter, Professor of Air Science at The University of Texas. Alpha Rho is also fortunate to have Mr. H. L. Gaskin, Capitol Area Council Scout Executive, as a Scouting Advisor, along with Dr. H. W. Newman who is our longest-serving Advisor. Jitter Nolan, a past Alpha Rho President, is one of our Faculty Advisors, along with Elwood Preiss, Arno Nowotny

(Continued on page ten)

SECTIONS

NATIONAL SERVICE FRATERNITY



The Eastern Zone, which includes New England, all of the Atlantic Seaboard States and West Virginia is headed by Mr. E. Ross Forman, Philadelphia, Pennsylvania. The Western Zone, which includes the Pacific Coast, the Southwestern and Mountain

Dr. Lawrence L. Hirsch of Chicago was Chairman of the Committee for Sectional Organization.



This month's Feature Chapter has done an outstanding job in the field of Boy Scout Junior Leader Training. Here we see Brother Dan Beckelman, Alpha Rho's JLT coordinator, addressing a group of students. The Brother to the right of Beckelman is David Magrill.

Outstanding Alumnus



Dr. Lester I. Tavel

Meet Brother Lester I. Tavel, leading Doctor of Osteopathy. Brother Tavel was initiated into Alpha Phi Omega at Mu chapter, Indiana University, Bloomington.

Upon entrance into his graduate work at Kirksville (Missouri) College of Osteopathy and Surgery, Brother Tavel organized Alpha Omega chapter at that institution. When he became a member of the faculty of the Kansas City College of Osteopathy and Surgery, he organized Theta Eta chapter. From 1938 to 1944, Brother Tavel served as a member of the National Executive Board of Alpha Phi Omega. He is a life member of the Fraternity.

Born at Indianapolis, Indiana, Dr. Tavel has practiced at Platte City, Missouri, and Franklin, Texas, and is now in practice at Houston, Texas, where he is active in professional and civic affairs. Carrying forth the concept of service, Dr. Tavel has written numerous papers in his field and he has served as a lecturer for many meetings related to the improvement of osteopathic practice.

Knowing his dedication to service and his belief in the principles of Alpha Phi Omega, we are proud to recognize as an outstanding alumnus, Dr. Lester I. Tavel.

GOOD PHOTOGRAPHS

During the course of the year, the Editors of Torch and Trefoil receive scores of photographs that, for one reason or another, cannot be used in the magazine.

To give our Brothers an idea of what makes a top-notch photograph, not only for Torch and Trefoil but for general publicity purposes, we present the following set of specifications:

1. Black - and - white photographs must be sent. For almost all printing processes, color photographs or photo-slides are not usable.

2. Sharp, clear images are a necessity. This does not mean that snapshots cannot be used but the subject matter of a photo must be clearly distinct.

3. Good layout is important. Make sure that each photo tells a complete story. Even if you must take time to pose people or wait for a special shot, this is better than the usual "candid" shot that is confusing to the viewer.

4. Show evidence of Alpha Phi Omega in every photo. If your photograph shows Brothers or pledges in action, make sure they are wearing armbands or that a Fraternity banner is visible in the background.

5. Make your photos action packed!

A photo showing men raising the money is more newsworthy than a photo of a Brother handing a check to an agency head.

6. Attach a descriptive note to each photo or number each photo and send accompanying descriptions. Describe what is going on and list accurately the names of everyone of importance to the action shown.

7. Send photos to Torch and Trefoil as often as possible and don't feel bad if they are not used immediately. The Editors try to put as many photos as possible into each issue but resources are limited. In addition to Torch and Trefoil, it is our desire to use your photos in other Fraternity literature and publicity. Help us develop a file of good photographs.

WANTED

URGENTLY NEEDED

35 mm Slides
of Chapter Activities

Send to 1100 Walloway Building,
Kansas City 6, Missouri

On to Kansas City

Kansas City, Missouri, where the 1962 National Convention of Alpha Phi Omega will be held, is the home of three fine A Phi O chapters. Alpha Eta is located at the University of Kansas City; Gamma Xi at Rockhurst College and Theta Eta at the Kansas City College of Osteopathy and Surgery. All three chapters were ably represented at Philadelphia last December.

Nearby are Alpha Mu, William Jewell College; Beta Kappa, Central Missouri State College; Lambda, University of Kansas, and Beta Tau, Washburn College.

The photos show projects conducted by Theta Eta Chapter and appeared in the College Journal, the official organ of the Kansas City College of Osteopathy and Surgery.

A.P.O. REPORT OF A FEW PROJECTS OF SERVICE ON AND OFF CAMPUS

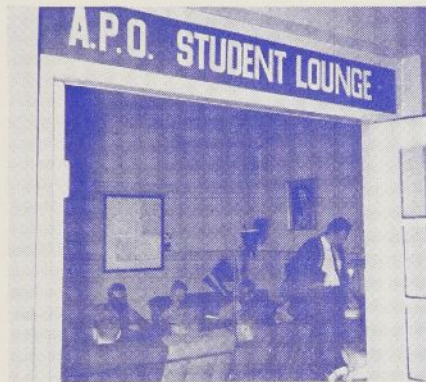


Photo shows the A.P.O. Student Lounge, organized, furnished and maintained by Theta Eta chapter for the use of the entire student body. Several thousands of dollars were spent by the chapter on this project.



A group is shown assembled in the lounge. Always a popular spot.



Here we see A.P.O. men servicing the candy, coke and cigarette machines which the chapter manages. Income is used to support chapter prospects.



This tactful picture shows physical exams in local schools conducted by Theta Eta men—a most important A Phi O service.

A.P.O. IS:

Alpha Phi Omega is a national service fraternity with chapters in the larger Universities and Colleges throughout the country. It is an extension on the collegiate level of the "good deed" concept of the Boy Scout movement. Its members are either former Boy Scouts or men who have been associated with scouting previously or presently.



CHAPTER NEWS



- * * * DELTA CHAPTER, Auburn University, Auburn, Alabama, is building an outdoor, lighted Bulletin Board for their campus. They are also buying a second piano for the Union Building.
- * * * GAMMA CHAPTER, Cornell University, Ithaca, New York, has charge of poll watching at student elections. If your chapter needs information on this project write to Gamma's President, John Morris, 309 Eddy Street, Ithaca, New York.
- * * * ETA UPSILON CHAPTER, Marshall College, Huntington, West Virginia, provides a swimming instruction program for the Scouts of their area.
- * * * LAMBA KAPPA CHAPTER, Loras College, Dubuque, Iowa, conducts campus tours for high school seniors. They are presently assisting interested men at the University of Dubuque to form a chapter there.
- * * * ZETA ZETA CHAPTER, Drexel Institute of Technology, Philadelphia, Pennsylvania, plans to conduct an Easter Bunny party for orphans. This chapter will conduct the installation of Glassboro State Teachers College very soon.
- * * * ALPHA NU CHAPTER, St. Norbert College, West DePere, Wisconsin, assisted the cerebral palsy telethon in Green Bay. This chapter has a 100% status in terms of pledges accepted (21) and men initiated (21). Congratulations, Alpha Nu.
- * * * DELTA ETA CHAPTER, Oregon State College, Corvallis, Oregon, assists with Eagle recognition ceremonies and with swimming and life-saving instruction for Scouts and Explorers. Their chapter is assisting nearby campuses with plans to establish AΦΩ groups.
- * * * NEBRASKA STATE TEACHERS COLLEGE, Chadron, Nebraska, has an active AΦΩ preparatory group. Witness this quote from "The Eagle," the college newspaper: "The student sponsored convocation Friday, February 17, typified a democratically operated adventure. It proved what can be done on campus when the enthusiasm and determination of the student body is involved. Such procedures offer effective means of nurturing student leadership. Much credit is due the newly organized Alpha Phi Omega, a branch of a National Service Fraternity. The all-out effort to get the students to stay on campus and participate in the ring of activities scheduled for the week end was most successful."
- * * * ETA XI CHAPTER, Central Washington College of Education, Ellensburg, Washington, helps the Student Government with college social functions. Their Advisory Chairman, Dr. E. E. Samuelson, appreciates the help they give with student registrations.
- * * * NU BETA CHAPTER, Hope College, Holland, Michigan, will swap ideas with any chapter on its baby sitting project. They are now readying for the big Tulip Time, nationally known float parade.