

TORCH AND TREFOIL

OF ALPHA PHI OMEGA



PROGRESS IN SERVICE

In the chronicle of Alpha Phi Omega, the year 1938-39 will be recorded as a period of great progress in campus and community service. Throughout the nation, the chapters of this fraternity have made their services more extensive and more effective. More persons than ever before are benefitting from the far-reaching activities of Alpha Phi Omega.

Civil fingerprinting on college campuses as a means of preserving personal identity has become a project of national scope. Freshman orientation in both the fall and mid-winter registrations is a universal activity among our chapters, and on many campuses a systematized guide service to convention groups, parents and other visitors is provided by Alpha Phi Omega.

Competitions such as intramural athletics, interfraternity sings, and tournaments in minor sports are sponsored by a considerable number of chapters. The beautifying of campus properties has become a major responsibility in several chapters. Scholarship and loan funds are maintained on some campuses by Alpha Phi Omega for the assistance of needy students. Hundreds of other projects, particularly adaptable to each campus, are a part of the service program of Alpha Phi Omega chapters. Yes, and included is many a seemingly insignificant project which goes unheralded yet fills a real need in the hurry of campus life. Even the providing of transportation for a crippled student is not too small nor troublesome a task for an Alpha Phi Omega chapter.

Service in the community has an equal importance in the program of our fraternity. Leadership in the Boy Scout program in the college community has a major place in every chapter. The sponsorship of Scout camporees, rallies, contests and weekly swims, and assistance in courts of honor capture the interest of many Alpha Phi Omega members. Councilwide and statewide leadership training conferences are conducted annually by several chapters. Numerous awards are presented to Scouts who have demonstrated outstanding qualities. Radio programs are broadcast on many occasions to bring the values of Scouting vividly to the public mind. Individual leadership as Assistant Scoutmasters, Merit Badge Counselors, etc., is provided by many members.

Campaigns for the collection and distribution of foodstuffs, clothing and other provisions for the needy are carried out by many chapters. Joint sponsorship of projects with the Junior Chamber of Commerce and other service bodies has been effective. Assistance to the Red Cross, boy's clubs, settlement houses and charity campaigns is given by several chapters.

A project of great value, yet unpublicized, is the giving of blood to help save human life. In many chapters all of the members have had their blood typed and Alpha Phi Omega men are frequently called upon for transfusions. What greater assistance could be rendered to our fellowmen?

Alpha Phi Omega is a fellowship of service which extends the country over. In all of this unselfish activity there is a spirit of brotherhood, a feeling of gratitude for the opportunity of helping others and a prayer for increased strength and wisdom in furthering the values of this fraternity.

Chapters Aid in Extension

It is significant that the members of Alpha Phi Omega are anxious to assist in extending the benefits of our fraternity to other campuses. During the past few months a considerable number of chapters have aided immeasurably toward the establishment of new chapters in nearby schools.

Alpha Xi Chapter at Washington State has spread the news of Alpha Phi Omega to the University of Washington, the University of Oregon, Oregon State College and the University of Idaho. In one particular instance two Alpha Xi brothers, Bill Biggar and Stuart Miller, made a trip to Corvallis, Oregon, 450 miles distant from Pullman, to assist in forming a petitioning group at Oregon State.

Our brothers of Beta Iota Chapter at New York University have been in contact with groups in several schools in the metropolitan area, and recently had representatives from these schools as guests at a chapter smoker. This extension work is expected to result in new chapters at the College of the City of New York, Brooklyn College, Brooklyn Evening College, Columbia University and Rutgers University.

The DePauw University Chapter, Alpha Upsilon, is in contact with men at Wabash College and intends to keep working on this until a chapter is officially chartered on that campus.

Upsilon Chapter at Milwaukee S. T. C. and Alpha Nu Chapter at St. Norbert are combining their efforts toward forming a new chapter at Marquette University.

A group of more than twenty men of Mayville State Teachers College, Mayville, North Dakota, is now attempting to perfect a petitioning group and is preparing for Alpha Phi Omega affiliation. This group has been built under the leadership and guidance of Alpha Lambda Chapter at North Dakota State.

Beta Theta Chapter at the University of Wisconsin is in frequent contact with a group at Whitewater State Teachers College and hopes to prepare this group for membership early next fall.

Several members of Beta Gamma Chapter at Central Y are assisting in the formation of a new chapter at the University of Chicago. The Chicago group already has 35 members and is expected to submit its petition soon.

Alpha Rho Chapter at Texas University is working constantly toward extending Alpha Phi Omega to every eligible school in the state. Denton Teachers, Baylor University and several other schools will soon perfect new chapters under Alpha Rho's guidance.

Alpha Omicron Chapter at S. M. U. is giving assistance to the group at Texas Christian University.

Tau Chapter at Florida and Delta Chapter at Alabama Tech are urging the formation of new chapters at Georgia Tech, Emory University and Clemson College (South Carolina).

Kappa Chapter at Carnegie Tech is doing some effective work toward re-establishing Beta Chapter at the University of Pittsburgh, and has started preliminary contacts with fourteen nearby schools for new chapters next year.

All of the eligible colleges and universities in the New England States have been circularized by Brother William R. Willard of Alpha Chi Chapter (M. I. T.) and the chapter is giving its full support toward forming new chapters.

Beta Beta Chapter at Michigan State is planning to hold a conference of representatives from eligible schools in the state of Michigan to acquaint these representatives with the values and purposes of Alpha Phi Omega. This is a most thorough way of spreading information about Alpha Phi Omega and will undoubtedly result in several new chapters in the near future.

And so, the chapters of Alpha Phi Omega continue to extend the fraternity to new campuses.

MEMBERS HONORED FOR DISTINGUISHED SERVICE

In every chapter certain brothers render exceptional service in carrying out the program of Alpha Phi Omega on their campus. Each year the National Executive Board asks the advisory committee and the president of each chapter to nominate one active member for the national "Award for Distinguished Service." It is the purpose of this award to honor the member of each chapter who has rendered the most effective service in advancing the chapter program. Members who have served as chapter presidents during the period of the judging are not eligible for the award.

Twenty-one brothers have already been nominated by as many chapters for the distinguished service award for 1938-39. The TORCH AND TREFOIL extends congratulations to these brothers who have excelled in the work of Alpha Phi Omega. These brothers have inspired others to carry on the principles of the fraternity, they have given unselfishly of their own time and energies, they have attended chapter meetings with extreme regularity and have served effectively on chapter committees. They have shown unusual readiness to serve beyond the requirements of their particular assignments, and truly they have exemplified the spirit of Leadership, Friendship and Service.

Samuel McCain (Phi)
James Roy Jackson (Beta Xi)
Theodore S. DeLay (Kappa)
Norman J. Jacobson (Alpha Omega)
Livius Lee Lankford (Alpha Rho)
Anthony F. Dernbach (Alpha Epsilon)
Carl Schwehn (Epsilon)
William M. Brenton (Beta Kappa)
Jay Weisman (Alpha Theta)
Lewis Fogle (Alpha Pi)
Alfred Roberts (Beta Theta)
John Leslie Hixon (Lambda)
Alfred Reichbach (Beta Iota)
Jack Armstrong (Alpha Upsilon)
Lewis McCammon (Alpha Gamma)
Edward Eames (Beta Lambda)
Clement Abbott (Xi)
Paul Boggs (Beta Delta)
Charles Dawson (Alpha Omicron)
Robert Grafrath (Alpha Eta)
Harvey Stevens (Upsilon)

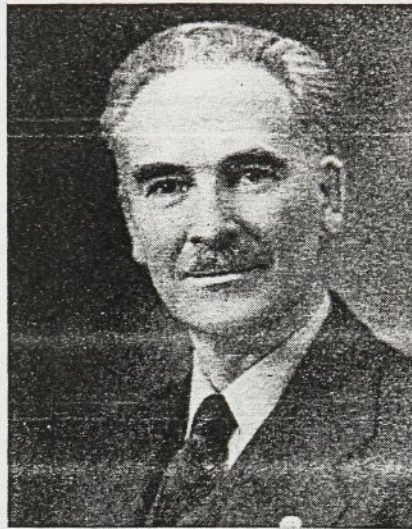
Meet These New Members of the National Executive Board

The National Convention in St. Louis last December unanimously elected six brothers to membership on the National Executive Board. In making its selections the convention considered the past experiences of each candidate in actual service in the fraternity and placed in these men the increased trust and responsibility of serving in the body which governs the fraternity between conventions.



Dr. H. H. Germond

Faculty Advisor of Tau Chapter, Professor in the University of Florida, strong believer in the ideals and program of this National Service Fraternity, ardent worker for APO'S success.



Dr. John S. Coie

Faculty Advisor of Alpha Xi Chapter, Professor in Washington State College, Veteran Scouter loved and respected as a leader of youth, booster for the extension of Alpha Phi Omega throughout the northwest.



Prof. Kent D. Shaffer

Faculty Advisor of Kappa Chapter, Professor in Carnegie Institute of Technology, energetic leader in spreading interest in Alpha Phi Omega in all colleges in the east.



Harold F. Pote

Member of Beta Iota Chapter, National Director of Personnel of the Boy Scouts of America, loyal worker through many years of Alpha Phi Omega progress.



Dr. Lester I. Tavel

Past President of Mu Chapter, Founder of Alpha Omega Chapter, physician and surgeon, a leader of exceptional ability and consecration in the service program of Alpha Phi Omega.



Dean Arno Nowotny

Faculty Advisor of Alpha Rho Chapter, assistant dean of men at the University of Texas, enthusiastic exponent of strong faculty support in all chapters of Alpha Phi Omega.

FORTY PROJECTS THIS YEAR IN ALPHA RHO CHAPTER

The most extensive series of projects reported in Alpha Phi Omega this year is the program of Alpha Rho Chapter at the University of Texas. The campus itself is affectionately known as "Forty Acres," and the student body and faculty have deep gratitude for the service rendered in Alpha Rho's forty projects of this school year. This gratitude is expressed in the editorial from the student newspaper which is reprinted on this page.

The following is a summary of Alpha Phi Omega's program at Texas:

FRESHMAN ORIENTATION. Information, guide and big brother service. Reception held for 1,300 new students in Union Building.

REGISTRATION AID. Members helped new students in registration procedure.

FELLOWSHIP PARTY. A get-together for members and advisors at beginning of semester.

BARBECUE SUPPER. A traditional event for prospective new members. At this third annual supper there were 98 prospects in attendance.

REGION NINE CONFERENCE. Served as host to the second annual inter-chapter conference which included representatives from Alpha Omicron and Beta Delta Chapters.

STUDENT ELECTION. Full charge of all duties from the printing of the ballots until the final vote was tallied. Required cooperation of all members. Election judge declared this the finest piece of work ever done in campus elections.

"ARAPOUT NEWS." Published for the purpose of maintaining interest among alumni of the chapter.

TOY CAMPAIGN. Approximately five thousand toys secured for distribution to underprivileged children. An especially satisfying project for the members.

ALPHA PHI OMEGA DANCE. Alpha Rho's first dance. Seventy-five couples attended.

USHERING. Alpha Phi Omega handled all ushering at football games.

GUIDE SERVICE. Greatest contribution of Alpha Phi Omega to the University of Texas, selling campus visitors on the possibilities of a greater University. About eight thousand visit the campus annually.

INFORMATION SERVICE to convention groups and on every special occasion.

BUILDING SCHOOL SPIRIT, advertising pep rallies and supporting athletic teams.

ALPHA PHI OMEGA PICNIC. An outing each month at very low cost. One of Alpha Rho's strongest assets is its reasonable finances.

SCOUT CAMPOREE for the local Scout Council. It was a big success.

PAMPHLET DEVOTED TO TEXAS BRANDS published and distributed to persons all over state and nation.

USHERING. Many organizations call upon APO for ushering and ticket sales duty.

POLL OF STUDENT OPINION regarding campus beautification.

FINANCE DRIVE. Chapter treasury was assisted by the sale of tickets for Light Opera Co.

CENSUS OF FORMER SCOUTS on the campus.

EXTENSION BULLETIN. The chapter published an extension bulletin covering the details of chapter building, principles, objectives, and values and distributed it to every eligible school in Texas.

GOVERNOR'S INAUGURATION. Alpha Rho Chapter had a major part in the inauguration of the new Texas governor, marshalling bands and crowds, ushering, etc.

SWEETHEART ELECTION. Chapter handled the job of operating polls and counting 3,500 votes cast.

PICNIC. A date picnic held at local Scout encampment near the Alpha Phi Omega hut.

FITE NITE PROGRAM. Handled 7,000 students at the annual Fite Nite Program.

ROUND-UP ACTIVITIES at 1939 homecoming. Chapter informed the visitors about programs, exhibits and operated a guide and housing service.

SPRING ELECTIONS. Record vote of 6,500 cast. Two Alpha Rho brothers, Livius Lankford and Bob Kemp, were appointed by the Students Association as election judges. It was generally conceded to be the cleanest and best election ever held.

CAMPUS BEAUTIFICATION. A traditional project and the results are greater each year.

SCOUT RALLY AND MOBILIZATION for about 2,500 Austin Scouts.

TROOP LEADERSHIP. Many members are actively engaged in troop leadership, and their troops are noticeably at the top in Council rating.

COUNCILORS ACTIVITIES. Twenty Alpha Rho men now visit troops to assist in improving troop programs.

DECORATIONS FOR BARN DANCE. Obtaining farm implements for decorating the gymnasium.

COURT OF HONOR PROGRAMS, assisting in giving recognition for Scout achievement.

TRAINING COURSE FOR SCOUTERS, offered to students for credit. Plans are under way to open the course to Scoutmasters and their assistants.

ATHLETIC RECEPTION COMMITTEE, receiving and welcoming visiting teams at the train and bus stations.

SCOUT FUN DAY sponsored by APO as a part of the celebration of Scout Anniversary Week.

INTER-SCHOLASTIC LEAGUE. Assisted the visiting high school teams contesting in the University Inter-scholastic league program.

OIL-WORLD EXPOSITION. As a recognition to the extensive program carried out this year, the University requested Alpha Phi Omega to choose two of its outstanding members to represent the school at the Oil-World Exposition at Houston, Texas, April 24 to 29. Brothers George Rich and Harper Leiper were selected for this honor and responsibility.

GOOD SAMARITANS. At various times during the year relief cases have arisen and brothers of Alpha Rho Chapter have reached down in their pockets and provided money time after time to help underprivileged persons. Such projects as these have contributed to a keen understanding of what Alpha Phi Omega can mean to its membership.

FOUR YEARS OF SERVICE

Four years ago, Alpha Rho Chapter of Alpha Phi Omega, national honorary service organization for men, was organized on the University campus. The idea behind this new group on the Forty Acres was to bring outstanding and energetic students, most of whom had formerly taken active part in Boy Scout work, together for the purpose of being of service to the University, its purpose, its ideals, and its surroundings.

Friday night in the Junior Ballroom of the Texas Union, Alpha Rho chapter celebrated its fourth anniversary with a dinner-dance and the installation of the new officers for the 1939-1940 long session.

With all due praise and credit to other service organizations on the campus, without doubt Alpha Rho chapter of Alpha Phi Omega is the most active of such groups to be found at the University. Throughout the year there rarely passes a day on which some member of Alpha Rho is not doing some voluntary act toward making the University and its campus a more pleasant and beneficial place for students, faculty, and the thousands of guests who visit the Forty Acres each year. Service work for the A.P.O.'s begins the first day of school and continues until the end of the final day.

Alpha Rho chapter during the present has served as guides for countless campus tours, has sponsored its annual beautification of the campus drive, has conducted student elections, assisted Mortar Board in its drive for the Benedict Memorial Fund. All told, over forty projects appear on the chapter's records for the 1938-1939 long session.

Four successive years have been recorded by the University chapter of A.P.O. As Buck Durham, new president, took the oath of office Friday night from Bob Kniffin, retiring president, the organization turned its interests toward its fifth year—a year which should prove more successful than any in the past.

Above is an editorial reprinted from a recent issue of the "Daily Texan," campus newspaper of the University of Texas. It is a fitting commendation of the outstanding program of Alpha Rho Chapter during the present school year.

The October Issue of
TORCH AND TREFOIL

will carry news of the late spring and early fall projects, initiation ceremonies, installations, etc. Material from your chapter will be gratefully received at the National Office.

The deadline is September 15.

SENIOR SCOUT CONVOCATION SPONSORED BY ALPHA PHI

Senior Scouts of the St. Louis Council were guests of Alpha Phi Omega, May 2, when Alpha Phi Chapter conducted its first annual Senior Scout Convocation. The meeting was attended by 150 boys and extended throughout the afternoon and evening. It presented an excellent opportunity for Senior Scouts and former Scouts to meet together for an interesting program on the campus. Below is a copy of the program:

1 to 4:15 p. m. VOCATIONAL GUIDANCE PANELS

Twenty discussion groups on interesting vocations were presented under the leadership of the best men available. Following is a list of the panel subjects:

Accounting	Forestry
Advertising	Government Service
Agriculture and Horticulture	Home Economics
Air Conditioning—non-technical	Journalism
Architecture	Law
Auto Mechanics, Metal, Building and Skilled Trades	Librarian
Aviation—non-technical	Medicine
Commercial Art	Music
Cosmetology	Special Fields for Women
Dentistry	Nursing
Diesel Engineering	Physical Education and Recreation
Engineering—technical Aviation and Air Cond.	Radio—non-technical
Fine Arts	Salesmanship and Insurance
	Secretarial Work
	Social Work
	Teaching

This part of the program presented an unusual opportunity for boys to investigate the problems involved in vocational choices; and a great deal of practical information was derived. Each boy was permitted to attend two different panels.

4:15 to 6 p. m. FUN

For this period of recreation, the university furnished the swimming pool, softball equipment, rifle range and table games.

6 to 7:30 p. m. FREE BANQUET

Featuring food, Scout ditties, entertainment and a general good time.

7:30 to 9 p. m. "WHAT'S THE USE?"

Is my chosen job going to be worthwhile? During this closing session there was an opportunity to ask questions on how to evaluate a vocation as a desirable life work with regard to salary, chances of advancement, possibilities of new developments in the field, etc.

Says Judson Green, president of Alpha Phi Chapter: "The convocation was a great success. Next year we will 'do something' about the free banquet, which was the only reason we had to limit our crowd."

WHAT ABOUT THE PAST PRESIDENTS?

What responsibility does your chapter give to past presidents who are still on the campus and should rightfully have an active part in chapter affairs? Does the brother who serves as president of your chapter pass into obscurity immediately upon turning over the gavel to a newly-elected brother?

The following is some information about how some chapters use their past presidents: In Lambda and Alpha Eta Chapters the immediate past president automatically is assigned the office of Chapter Critic. In this capacity he has the opportunity at each meeting to offer sug-

gestions and advice.

Mu Chapter elects its active past presidents to the office of Advisory Vice-President, and at present has two such officers. This places the past presidents in an official position to aid the new president in carrying out the duties of his office.

In Beta Theta Chapter, the president of last term now serves as Historian, an especially interesting and valuable assignment for one who has had experience in leading the chapter and has a vital interest in the chapter's future success.

What happens to the past presidents of your chapter?

RHODES SCHOLAR.



Vernon G. Lippitt

... The highest honor in the scholastic world has been achieved by this brother of Alpha Phi Omega. He is the winner of a 1939 Rhodes Scholarship. Brother Lippitt is a charter member of Alpha Chi Chapter at Massachusetts Institute of Technology. The TORCH AND TREFOIL extends congratulations.

FIVE BETA MU MEMBERS GIVE TRANSFUSIONS

By Vaughn Burt, Historian

Although the members of Beta Mu Chapter at the Southwest Missouri S. T. C. had their blood typed and tested less than three months ago, five members have already been called upon for transfusions at the hospitals of the city. We feel that this kind of aid toward saving human life is the most important service that can be rendered by our chapter.

During the annual district music contest for high schools, recently held at the college, Beta Mu Chapter had an active part. The contest, which was the largest of its kind ever held in Missouri, lasted four days, each day's activity extending from 9 a. m. to 9 p. m. At least nine members of Alpha Phi Omega were on duty at all times during the contest, directing visitors, giving information, ushering, and working in general to keep the schedule running smoothly. The faculty and the music supervisors were well pleased and grateful for our assistance.

ADVERTISING INDIANA S. T. C.

By W. E. Kirk, Historian Beta Lambda

Auto plates bearing the inscription, "Terre Haute, Home of Indiana State Teachers College," are being manufactured and will be sold by members of Beta Lambda chapter. The purpose is two-fold, to advertise the college and to raise funds for the furtherance of the chapter's service activities.

On April 8 the members of our chapter gathered early in the morning to clean up the campus, and to launch a "Keep Our Campus Clean" campaign. Immediate response was given by the student body, the faculty and the custodians of the campus. Ten bushels of chewing gum and candy wrappers, scrap glass, sacks, etc., were picked up by the chapter members during the opening day of the drive. Receptacles have been placed about the campus and the cooperation received toward keeping the campus clean has been excellent.

Sponsor Band Concert

A coming event in Beta Lambda's program is the presentation of the College Band in a spring concert to be held June 4. Through the cooperation of Indiana State's radio studios and WBOW the concert will be broadcast.

AN INTERESTING MONTH IN ALPHA NU

By Anthony Chmielewski, President

The final weeks of the semester are filled with a variety of activities in Alpha Phi Omega at St. Norbert College. The following is our schedule from May 4 to June 4:

- May 4—Initiation Banquet and Election of Officers.
- May 6—All members usher for the Scout circus at the Columbus Club in Green Bay. Transportation for several troops will also be furnished by the chapter.
- May 10—Executive Committee meeting.
- May 8 to 23—Officiating at all games of the St. Norbert high school softball league.
- May 12—Alpha Phi Omega trophy will be awarded to the winning class in the college's annual intramural track meet.
- May 20—A social for the chapter members at Pamperin Park Lodge.
- June 3 and 4—Overnight trip to Camp Grasse.

The chapter has also made plans to send a stone to Beta Chi chapter at Oklahoma City University to be used in their fireplace project.

NATIONAL VICE-PRESIDENT



Dr. M. C. Hayes

Veteran Senior Faculty Advisor of Eta Chapter, elected by the St. Louis Convention to serve as National Second Vice-President of Alpha Phi Omega.

IOWA SCOUTS AND APO'S TO BE XI CHAPTER GUESTS

By Paul D. Metzler, Historian

In connection with the annual Veishea at Iowa State College, Xi Chapter will be host at a special breakfast session. Invitations have been extended to Scouts throughout the state of Iowa and to the other Alpha Phi Omega chapters of the state. Ed Bock, All-American football player, has been slated as the speaker and we are anticipating a capacity crowd.

THE EDITOR SAYS:

We have reason to be exceedingly proud of Alpha Phi Omega's service record. In a few short years our fraternity has become the outstanding service organization on the college campuses of our nation.

Let's boost Alpha Phi Omega by telling our friends about it throughout the summer months. A recommendation of Alpha Phi Omega from a member to some Scout who is planning to attend college or university next fall will be a great step toward causing him to want to affiliate with this national service movement.

DONATES DICTIONARIES

By J. T. Peurifoy, Historian Alpha Omicron

The latest project to be completed in Alpha Omicron Chapter was the providing of dictionaries for each of the three dormitories on the S. M. U. campus. We raised the money for this by the showing of a sound movie, "My Man Godfrey" in the school auditorium. The gifts were greatly appreciated by the residents of the dorms and the matrons.

Our most consistent service is that of giving blood transfusions. Besides having given numerous transfusions of late, we have typed many students to make sure that all types are available for emergency use.

AN EXCELLENT YEAR IN BETA IOTA

By Alfred Reichbach, Historian

Alpha Phi Omega at N. Y. U. has had a very busy and successful year. We have cemented the ties of brotherhood, instituted many projects, built a good name for ourselves in the eyes of the student body, student council and faculty, and have taken strides toward building for the future.

Beginning next fall we will be given the responsibility of executing many important projects for the student body.

As ours is a large metropolitan university, we have found difficulty in keeping a large membership actively working together. To relieve this we have secured a chapter room near the campus. It is a large, well furnished room, providing a place for members to meet in spare hours. This has aided greatly in maintaining the interest of all our members.

One of our major projects of the year is extension, assisting in forming new chapters of Alpha Phi Omega in the other colleges and universities in this locality. Our members are now in contact with students at six schools where we hope to soon have new chapters established.

We have applied for a tent in the Boy Scout Village at the New York World's Fair. If we are successful, Alpha Phi Omega will be represented at the fair.



The First Alpha Phi Omega Chapter in Arkansas, Beta Rho at the University of Arkansas, Installed May 2, 1939.

BETA RHO AT ARKANSAS

Degree Team of Alpha Eta Chapter Conducts Initiation Ceremony

By Bruce Bates, Historian

The first Alpha Phi Omega chapter in the state of Arkansas was installed April 2 at the University of Arkansas, Fayetteville. The ceremony was under the direction of National President H. Roe Bartle, with Alpha Eta Chapter's degree team conducting the ritualistic work.

Following the installation ceremonies, the chapter and its guests attended a banquet.

The officers of the petitioning group were retained as the first officers of the new chapter and are as follows:

Robert Perkins	President
John Robinson, Jr.	Vice-President
Fay Jones	Secretary
Fredrick Lynd	Treasurer
Bruce Bates	Historian
Cecil Brannen	Alumni Secretary
Dr. Walter S. Dyer	Senior Faculty Advisor

The advisors of Beta Rho Chapter, in addition to the Senior Faculty Advisor are:

Dr. Dwight M. Moore	Professor of Botany
Col. John Robinson	
	Professor of Military Science
Dale Bogard	Instructor in Chemistry
I. W. Wall	Scout Executive
Bunn Bell	Volunteer Scouter

Beta Rho is already at work in an active program. The chapter received favorable comment in the "Arkansas Traveler," student newspaper, for work during the Arkansas State Literary and Track Meet. The group conducted tours of the campus and maintained an information booth.

ANTI-NOISE CAMPAIGN BY ALPHA TAU

By Robert Kershaw, President

A campaign for quiet in the Butler University library and a clean-up drive for keeping the halls clean and staying off the grass have been sponsored in recent weeks by Alpha Tau Chapter. Both of these activities have received good response.

In February we sponsored an all-city Scout basketball tournament, a rather "natural" project in a community where everyone is so intensely interested in basketball.

On March 8, our annual Thomas C. Howe Award was presented to Scout Robert Smith, selected as the outstanding Eagle Scout for the year in Indianapolis. The award includes a trophy and a one year scholarship to Butler.

SENIOR NIGHT AT MIAMI

Ninety-five senior boys from the high schools of Miami, Florida, were guests at the second annual Open House, sponsored by Alpha Pi Chapter.

The visitors toured the building, art, chemistry and physics labs and then returned to the cafeteria for refreshments. Motion pictures of the Bucknell-Miami football game were shown.

Brother Bob Hillstead, newly-elected chapter president, was master of ceremonies, and Brother Ray Fordham, vice-president, welcomed the high school students and invited them to attend the university.

WE POINT WITH PRIDE

Brother Leon Rutland, vice-president of Beta Delta Chapter, has been elected editor of "The East Texan" for 1938-39.

Brother Willis Heal, formerly of Alpha Eta Chapter and now a member of the new Beta Upsilon Chapter to be installed May 21, is editor this year of "The Tiger," yearbook of the Northwest Missouri S. T. C.

Two leaders of Alpha Pi Chapter are officers in the student administration of the University of Miami. Brother Ray Fordham, first vice-president of the chapter is the newly-elected president of the student council, and Brother Bob Hillstead, president of the chapter is the new treasurer of the student council.

C. H. Mullen, pledge of Lambda Chapter, has been elected to the highest office for men on the University of Kansas campus, that of President of the Men's Student Council. In addition he was recently honored with sixty-six men and women in the college of liberal arts and sciences who received the highest scholarship rating in that college.

Brother Sidney Chandler Reagen has been recently elected president of the Students Association of the University of Texas. Brother Pat Daniels of Alpha Rho is editor of the "Daily Texan."

The two charter presidents of Alpha Tau and Alpha Upsilon Chapters, installed jointly at the 1936 divisional conference in Indianapolis, are now members of the Professional Service of the Boy Scouts of America. Brother Marion Disborough, founder and first president of Alpha Tau at Butler University is a graduate of the 60th National Training School and is now Field Scout Executive at Evansville, Indiana. Brother Robert H. Shaffer, founder and first president of Alpha Upsilon at DePauw University is a graduate of the 50th National Training School and is Assistant to the National Director of Personnel, BSA. Brother Shaffer is doing graduate work at New York University towards a Ph. D. degree and is affiliating with Beta Iota Chapter as a Scouting Advisor.

As the Round-Up Rolls On

The success of our membership expansion efforts thus far has been chiefly due to the leadership of the seven ranch bosses. These seven sectional leaders have kept in constant contact with the chapters in their respective territories and have extended their assistance in reaching the chapters' quotas.

Brother Joseph Green says, "The chapters in the east are enthusiastic about the membership round-up. We are doing everything possible to see that the national campaign goes over big. We have something too good to keep for ourselves and are sincere in welcoming a thousand new members to enjoy our fellowship and activities."

Brother Joseph Beasley says, "Fortunately I have had the opportunity of personally visiting eight of the chapters in the central west and have been in communication with all of the others. The chapters in this territory believe strongly in the values of Alpha Phi Omega and are determined to build larger memberships to increase our service power."

Brother Alfred Roberts says, "In the great northland Alpha Phi Omega is growing as a result of our membership. Several chapters which were weak have fire in their eyes and intend to make their quotas. The stronger chapters recognize the need of further strength and are giving their full cooperation in the round-up."

Brother Henry Howison says, "We are doing our best in the southeast to make this drive a success. This range is wide and long and the service to be given is great. Therefore, we need more hands to help. Every chapter member is working to fill the chapters with new brothers and brand their hearts with Friendship, Leadership and Service."

Brother Eugene Zechmeister says, "The chapters in the far west held a conference April 15 which gave an opportunity to personally discuss our expansion efforts and plan for the completion of the drive. We are doing our best to produce our share and more in the national quota."

Brother William Parks says, "We are plugging and will keep right at it to reach our quotas in the middle west. We have an excellent group of chapters in this territory, of which Alpha Phi Omega may be justly proud, and we can count on them to do their best in the membership campaign."

Brother Robert Kniffin says, "We of the southwest are thoroughly imbued with the spirit of the membership drive and are anxious to have every chapter reach its quota. We now that the increased man-power which this round-up is producing will mean much to the future success of each chapter. So we are turning on the heat in these final days of the campaign."



A Letter Nation

My Dear Brother:

Through the fellows have been maintaining its ideals, hold, and guiding

fillment of its potentialities. This was a fine thing, and it is ours through their efforts. If we, their successors, are to make Alpha Phi Omega a dominant note on the campus, we must vigilantly strengthen all our supports.

The program of Alpha Phi Omega while national in scope, is of man-power. Increased man-power will in turn mean increased service.

We are not justified in asking men to join Alpha Phi Omega for a worthwhile program of activities, nor are we justified in asking the community or the college authorities unless we have them. Our predecessors have left a tangible program of friendship, leadership, and service. We must be recognized as the badge of service on campuses for the future. They have caused us to have learned in the passing years that the fundamental principle is to work it.

Our thoughts are at this time turning to the close of the year. Alpha Phi Omega it brings a break in active ties for every group of offtimes men who have been associated for a span of three years. I hope that each senior will take it upon himself to see that the man who takes his place has a vision of a man prepared to serve effectively in the ranks of Alpha Phi Omega. The chapter is working in a united spirit toward the attainment of 1,000 new A.P.O.'s before the close of the year. And I know that this assimilation is being welded into the nucleus of every chapter. A definite program for the opening months of the year with our new men having a part in that planning so that the drive will be gotten under way immediately upon the opening of school.

I know that every chapter will do its utmost to make the year and to go "over the top" if possible to compensate for the difficulty. In order for this to be true it is necessary that we all work toward our united success.

"It ain't the individual nor the army as a whole

But the everlasting teamwork of every bloomin' soul

Every man doing his bit for his chapter, every chapter doing its part for the success of our national brotherhood—that is the real object of 1939.

With all good wishes, I am

Faithfully and

STON

As the Round-Up Rolls On

The success of our membership expansion efforts thus far has been chiefly due to the leadership of the seven ranch bosses. These seven sectional leaders have kept in constant contact with the chapters in their respective territories and have extended their assistance in reaching the chapters' quotas.

Brother Joseph Green says, "The chapters in the east are enthusiastic about the membership round-up. We are doing everything possible to see that the national campaign goes over big. We have something too good to keep for ourselves and are sincere in welcoming a thousand new members to enjoy our fellowship and activities."

Brother Joseph Beasley says, "Fortunately I have had the opportunity of personally visiting eight of the chapters in the central west and have been in communication with all of the others. The chapters in this territory believe strongly in the values of Alpha Phi Omega and are determined to build larger memberships to increase our service power."

Brother Alfred Roberts says, "In the great northland Alpha Phi Omega is growing as a result of our membership. Several chapters which were weak have fire in their eyes and intend to make their quotas. The stronger chapters recognize the need of further strength and are giving their full cooperation in the round-up."

Brother Henry Howison says, "We are doing our best in the southeast to make this drive a success. This range is wide and long and the service to be given is great. Therefore, we need more hands to help. Every chapter member is working to fill the chapters with new brothers and brand their hearts with Friendship, Leadership and Service."

Brother Eugene Zechmeister says, "The chapters in the far west held a conference April 15 which gave an opportunity to personally discuss our expansion efforts and plan for the completion of the drive. We are doing our best to produce our share and more in the national quota."

Brother William Parks says, "We are plugging and will keep right at it to reach our quotas in the middle west. We have an excellent group of chapters in this territory, of which Alpha Phi Omega may be justly proud, and we can count on them to do their best in the membership campaign."

Brother Robert Kniffin says, "We of the southwest are thoroughly imbued with the spirit of the membership drive and are anxious to have every chapter reach its quota. We know that the increased man-power which this round-up is producing will mean much to the future success of each chapter. So we are turning on the heat in these final days of the campaign."



fillment of its potentialities. This was a fine is ours through their efforts. If we, their and make Alpha Phi Omega a dominant we must vigilantly strengthen all our sup

The program of Alpha Phi Omega while of man-power. Increased man-power will be mate goal.

We are not justified in asking men a worthwhile program of activities, nor are we the community or the college authorities in them. Our predecessors have left a tangible a program of friendship, leadership, and culture a true cross-section of the campus. They to be recognized as the badge of service or have learned in the passing years that the power to work it.

Our thoughts are at this time turning to Omega it brings a break in active ties for oftentimes men who have been associated for of A.P.O. I hope that each senior will take see that the man who takes his place has prepared to serve effectively in the ranks or is working in a united spirit toward the 1,000 new A.P.O.'s before the close of the thus assimilated is being welded into the ring fall. A definite program for the opening with our new men having a part in that plan be gotten under way immediately upon the

I know that every chapter will do its and to go "over the top" if possible to overcome difficulty. In order for this to be true it is necessary toward our united success.

"It ain't the individual nor the army, but the everlastin' teamwork of every Every man doing his bit for his chapter success of our national brotherhood—that is of 1939.

With all good wishes, I am

Enthusiasm High in Expansion

Letter to You From the National President

Brother:

Through the years a group of marvelous men have built Alpha Phi Omega, perpetuating its ideals, struggling to establish its foothold, guiding it toward expansion and fulfillment, and we glory in the heritage which they have bequeathed to us. They are going to carry on this work on the college campuses of America,

though the program is hampered by its lack of man-power, our ultimate goal is to increase service-power, our ultimate

Alpha Phi Omega unless we have a man-power to accept projects from either we have the man-power to accomplish them. They have conceived and made service. They have drawn into the picture the pin of Alpha Phi Omega on the college campuses from coast to coast. And they have shown the need of the program is man-

power at the close of the school year. In Alpha Phi Omega a group of men in our brotherhood—men of three and four years in the program—upon himself to replace himself and to continue the vision of our ideals and purpose and is Alpha Phi Omega. I hope that every chapter of our national goal in striving for

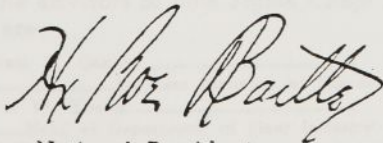
And I hope that the man-power being developed in every chapter program for the coming months of the fall should be planned NOW so that a full program of service may be carried out during the year of school.

Let's make its quota in our Round-Up drive for those who may encounter difficulty that you, my brother, do your part

whole
man's soul."

Each chapter doing its part for the continued realization of the real objective of our spring Round-Up

Truly and fraternally yours,



National President

The national Round-Up is testing and proving the consecration of our members in the service program of Alpha Phi Omega. Throughout the entire fraternity the chapter leaders have accepted the challenge of bringing in 1,000 new active members by June 10. "Increased Man-Power Means Increased Service-Power" has become an effective slogan. The chapters have recognized that there is strength in numbers and have visualized their increased potentialities with a great number of men actively participating in the chapter projects.

In virtually every chapter there is now a sizeable group of pledges serving their period of probation. The initiation ceremonies in the late days of the school term will determine whether each chapter quota has been reached and whether the national goal has been attained.

But the actual success of the membership drive will be determined by the service rendered by the new members in the next school year and in the years to follow. The far-reaching value of bringing in 1,000 new members will be evidenced by the chapter activities in the future.

This is a timely campaign. New members who are initiated into our chapters this spring will be on hand to give increased force to the chapter service projects at the beginning of the fall term. They will help to replace the active members who because of graduation or for other reasons will not return to the campus next year. They will be valuable "recruiting officers" to help search out, pledge and initiate other new members in 1939-40 and thus they will help to constantly inject new life's blood into the chapters.

In Alpha Phi Omega there are two major requisites to success, and they go hand in hand. One is an active service program and the other is adequate man-power. It has been proved that we cannot have one without the other. It takes man-power to put vitality into the service projects and it takes service to attract new men to membership.

Let's determine in every chapter to maintain throughout the coming year a membership greater than the minimum suggested in the Manual of Service. In schools having more than 2,500 men students we should maintain an active membership of 100 or more. In schools having from 500 to 2,500, we should have at least 50 men serving in Alpha Phi Omega. In schools having less than 500 men students, we should maintain a membership of 25 or more.

Let's determine to have adequate strength to accept the increased service responsibilities which will come our way in 1939-40. Let's make sure that our expansion efforts and our alertness for bringing in new members does not end with the closing of our present drive. We must continue always to increase the constructive force of Alpha Phi Omega on the college and university campuses of our nation.



The Installation Group of Beta Sigma Chapter at Texas Technological College, Installed April 30, 1939.

BETA SIGMA CHAPTER INSTALLED AT TEXAS TECH

Dean Arno Nowotny Is Installing Officer

Installation ceremonies for Beta Sigma Chapter at Texas Technological College, Lubbock, were conducted April 30, with Dean Arno Nowotny of the University of Texas, member of the National Executive Board, representing the fraternity as chief installing officer. Eight other brothers of Alpha Rho Chapter carried out the ritualistic ceremony and otherwise assisted in the installation.

In the installation of officers one of the Alpha Rho men explained the obligations to each of the Texas Tech leaders. An interesting sidelight is the fact that Brother Buck Durham, new president of Alpha Rho, and Brother John Gillespie, first president of Beta Sigma, both come from the same home town, Morse, Texas. Brother Durham had the thrill of installing his former high school classmate as president of the new Lubbock chapter.

The full list of officers elected to serve the new chapter follows:

John Gillespie.....	President
Argo Peek.....	Vice-President
Richard C. Harris.....	Secretary
John Blackwell.....	Treasurer
Malcolm Brenham.....	Historian
Elmer Tarbox.....	Alumni Secretary
Rollin Herald.....	Reporter
Dr. J. O. Ellsworth.....	Senior Faculty Advisor

The advisors of Beta Sigma Chapter are:

William T. Gaston.....	Business Manager of School
Arthur W. Young.....	Head of Department of Plant Industry
Ed S. Martin.....	Field Executive
Donald Petersen.....	Scout Executive
Jack O. Stone.....	

Writes Dean Nowotny, concerning the Lubbock chapter: "I believe we have a strong chapter at Texas Tech. Professor J. E. Ellsworth, the senior faculty advisor, intends to make Alpha Phi Omega his major outside activity and this in itself will mean much to the future success of the chapter."

EAGLE SCOUT CONFERENCE AT INDIANA

The second annual meeting of Eagle Scouts of the state of Indiana was sponsored by Mu Chapter, April 22 and 23. The 115 Scouts attending came from all parts of the state.

Scout Robert Nutt of Kokomo was the honored guest for the conference. He has been given statewide recognition for saving a life in an automobile accident through his quick action in applying first aid.

Scout Robert D. Smith of Bloomington was awarded Mu Chapter's annual scholarship.

A plan of electing officers at the conference was adopted this year. Scout Richard A. Luley of Indianapolis was elected president and Scout Clifton E. Sowards, Jr., of Bluffton was elected secretary.

The conference extended from 9 a. m. Saturday until noon Sunday. Included on the program was the keynote address by Branch McCracken, Indiana University basketball coach; seven discussion groups led by faculty men; attendance at a varsity baseball game and track meet; banquet, party and Sunday devotional services.

Brother John Vanatta did an excellent job as general chairman of the conference.

KITE CONTEST FOR CUBS SPONSORED BY BETA CHI

By Joe Stephenson, Historian

Competition for the biggest kite, biggest box kite, smallest kite of any type and most unique kite was sponsored by Beta Chi Chapter March 18 for the cubs of the Last Frontier Boy Scout Council (Oklahoma City). Members of the chapter served as judges and awards were presented to the winners in each division.

Three other projects have been carried out in the early stages of the activity of this new chapter. One was the sponsorship of the first annual Eagle Scout Banquet of the local council in which the program included a talk by Tom Stidham, Oklahoma University football coach and motion pictures of the O. U. Tennessee game of last fall. Brother Ethan Walker, vice-president of the chapter, was elected toastmaster for the 1940 banquet.

A second project was our assistance to the Junior Chamber of Commerce in the sale of Oklahoma City Golden Anniversary Poster Stamps.

In addition, we have completed the blood typing of all of our members for the purpose of transfusions. The records have been placed on file at the city hospitals for emergency use.

BETA DELTA RATES HIGH

Alpha Phi Omega is now fully recognized at East Texas State Teachers College as the organization to call upon when service is needed. The president of the college frequently summons the aid of Beta Delta Chapter.

We now have a real cross-section of the campus in our membership. In the chapter are members of every social fraternity excepting one, including two presidents, as well as a large number of non-greeks. The editor-elect of the school paper and the chief photographer for the annual are members of our chapter.

Through our publicity committee, we are in active contact with nearly all the Scoutmasters in the territory from which the college draws its enrollment and most of the Scouts therefore know of the work of Alpha Phi Omega before they come to college.



The Charter Membership of Beta Chi Chapter at Oklahoma City University installed March 31, 1939.

ALPHA MEMBERS ASSIST BOYS GROUPS

By Robert Dairymple, Past President

Among the current activities of Alpha Phi Omega at Lafayette College is the sponsoring of boys groups at the local Y. M. C. A. Each chapter member has charge of a group of eight or ten boys to whom he acts as an advisor. Each group elects a representative to a "city council" which meets once a month to enact laws and settle any disputes which may arise.

These groups are made up of the underprivileged boys of the community and under the leadership of Alpha Phi Omega a decided improvement is apparent in their attitude and sportsmanship.

The local Scout council was assisted by Alpha men on April 29 at a Scout rally held in the Easton high school stadium. Following the rally an enjoyable week end was spent at Camp Weygadt in the Delaware Water Gap.

TENNIS TOURNAMENTS SPONSORED BY BETA PI

By Keith Green, President

After a renovation of the university tennis courts which included setting new net posts in concrete and improvement of the grounds, Beta Pi Chapter has announced two tennis tournaments, a men's doubles and a mixed doubles tournament. The plans for the mixed competition especially is creating much interest.

Clarke's Clothing Store, a leading firm of Tulsa, is furnishing a trophy for the men's and individual prizes for the mixed tournaments.

BETA CHI AND BETA OMEGA CHAPTERS INSTALLED IN CEREMONY AT OKLAHOMA CITY

University of Tulsa Furnishes Degree Team

At the ceremonies on March 31 in Oklahoma City, Beta Chi Chapter of Oklahoma City University and Beta Omega Chapter of Oklahoma Baptist University were officially installed into National Alpha Phi Omega.

National President H. Roe Bartle presided, and he was assisted in the ceremonies by five brothers of Beta Pi Chapter, University of Tulsa, who served in the ritualistic work.

Both of these chapters are off to an excellent start . . . they started together and they anticipate a helpful relationship through the years to come.

The officers and advisors installed to serve Beta Chi Chapter during its first term are:

Julian E. Stephenson	President
Ethan Walker	1st Vice-President
Bill Hollingsworth	2nd Vice-President
Clyde Wagnon	Secretary

Wendell King	Treasurer
Joe Stephenson	Historian
Dean Wooden	Alumni Secretary
Ben White	Sgt. at Arms
Oswald Doenges	Senior Faculty Advisor
Arthur S. Roe	Senior Faculty Advisor
C. M. Allen	
E. M. Castleberry	Asso. Prof. of History
Ray A. Dillon	Asso. Prof. of Education
L. A. Jones	Registrar
A. G. Williamson	President of the University

The first officers and advisors of Beta Omega Chapter are:

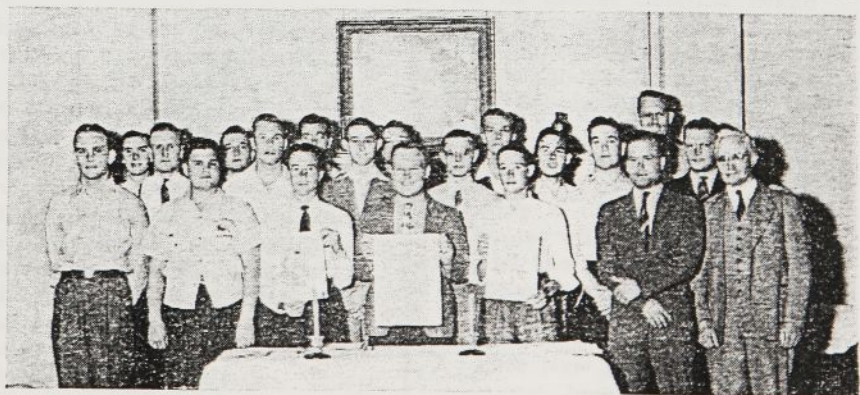
Warren Y. Smith, Jr.	President
Walter Lamb	Vice-President
Bill Leach, Jr.	Secretary
Harold M. Withan	Treasurer
Harmon Moore	Historian
Ralph Triplett	Alumni Secretary
James Thomas	Sgt. at Arms
Jack Purdue	Senior Faculty Advisor
Fred G. Watts	Professor of Sociology
Porter Routh	Professor of Journalism
A. M. Winchester	Professor of Biology
Leroy Plumley	Scout Executive
G. C. Cornett	John Merrill
Harry DeLashmutt	W. T. Short

CAMPUS FIREPLACE AT WICHITA

By Warren Nassaman, Historian Beta Alpha

An outdoor fireplace on the campus of Wichita University is being constructed by Beta Alpha Chapter and will be provided for the use of all campus organizations. The fireplace will be eight feet high and thirty feet from wing to wing and will have a cooking area of fifteen square feet. The area in front of the fireplace will be paved with hexagonal cement blocks which will help to keep the area dry and to a certain extent free from dirt and debris.

On May 24, we are planning to hold the formal dedication and presentation of the fireplace to the university, at which time we will be hosts at an all-school picnic to initiate the new structure.



In this picture are the Charter Members of Beta Omega Chapter at Oklahoma Baptist University, Installed March 31, 1939.

WE PAUSE TO HONOR THE GRADUATING SENIORS

This spring approximately five hundred active members of Alpha Phi Omega complete their undergraduate work, receive their sheepskins, and enter the business and professional world. Alpha Phi Omega is proud to honor these brothers whose consecration and leadership in the cause of service have meant so much to the advancement of their fraternity.

We know that you, graduating seniors, look back upon your Alpha Phi Omega activities with a sense of satisfaction, knowing that you have contributed to the happiness of others throughout your college days. May you always maintain an active interest in the growth of this national service movement.

One of the finest ways to keep in close touch with the development of Alpha Phi Omega is through Life Membership, which includes a lifetime subscription to the TORCH AND TREFOIL. The columns of this magazine will continue through the years to tell the story of Alpha Phi Omega.

Seniors, now is the time to subscribe for Life Membership. The fee is only \$10 for undergraduates and it is \$25 for alumni. If you wish to take advantage of the undergraduate rate before commencement time, write immediately to your National Office for a special membership application form.

Wouldn't you enjoy receiving complete news about the activities of Alpha Phi Omega four times each year in the TORCH AND TREFOIL through the years to come!

REFUGEES ASSISTED BY BETA GAMMA CHAPTER

By Robert Donan, Historian

Thirteen brothers of Beta Gamma Chapter of Central Y. M. C. A. College are working in conjunction with the Chicago Council of Boy Scouts of America in placing refugee boys with Scout Troops.

Brother Manual Nowick, new president of the chapter, expresses the chapter's evaluation of this project: "We feel this is the finest thing we have done. We can think of no greater service we have performed than that of helping these refugees become Americanized. It is a service to them and to our country."

Brother Claire Nesmith, chairman of the project, adds: "Some of these boys have been here for several years, yet they are still refugees. They go to refugee dances, refugee parties and refugee affairs of all kinds. There is no better way to properly orient these boys into real Americans than to introduce them to the principles and activities of the Boy Scouts of America. We believe we are contributing to the quality of future citizens."

THIRD ANNUAL LEADERSHIP CONFERENCE AT DEPAUW

A project of growing tradition is the Green Bar Conference sponsored by Alpha Upsilon Chapter. On April 29 the third annual conference was held on the DePauw University campus with 182 Scout Leaders attending. Twenty-four Scout Councils were represented by 18 Assistant Patrol Leaders, 33 Patrol Leaders, 13 Senior Patrol Leaders, 17 Junior Assistant Scoutmasters, 10 Assistant Scoutmasters, 13 Scoutmasters, 1 Sea Scout Skipper, 3 Assistant Scout Executives, 6 Scout Executives, 20 Troop committeemen and 47 leaders without classification.

Highlights of the conference program were the welcoming address by Dean Louis H. Dirks, the keynote address by Dr. E. R. Bartlett, president of the Indiana Council of Religious Education, discussion sessions, and the banquet address by Brother Homer L. Chaillaux, national director of the Americanism Commission, American Legion.

The subjects of the discussion sessions were: Using Boy Leadership, Troop Officers, Troop Program Building, Patrol Activities, Troop Advancement, Special Troop Ac-

tivities, Inter-Patrol Contests, Handicraft, Troop Games, and The Troop and the Public.

The conference was greatly enjoyed by those who participated.

Brother Jack Armstrong was general chairman of the conference committees. The brothers serving on committees included: Registration, Charles Kingsley (chairman), Orban Rich, Robert Kier, Bill Balch and Quentin Royer. Banquet, Albert Rosencranz (chairman), Charles Beardsley, Gerald Shandy, Bob Crocker, George Lockwood. Details and Arrangements, Richard Mills (chairman), Porter Baker, John Groves, Bill Fassnacht. Songs, Frank Duddy. Brother William S. Parks, Jr., president of the chapter served as ex-officio member of all committees.

Alpha Upsilon is anticipating an even more extensive Green Bar Conference for 1940.

TO ORGANIZE COOPERATIVE LAUNDRY

By Henry Howison, Past-President Tau

One of the most far-reaching undertakings of Tau Chapter this semester is our work toward forming a cooperative laundry on the Florida campus. The project is still in the formulative stage and we will report its outcome for a future issue of TORCH AND TREFOIL.

Another significant activity under way is the securing of funds to erect a permanent flag pole on the university campus.

CHI CHAPTER HOLDS ANNUAL CATALINA CRUISE

By Robert Petersen, Historian

Members of Psi Chapter of Santa Barbara were guests of Chi Chapter on its annual Catalina Island cruise to Emerald Bay, April 29 and 30. The highlight of the trip proved to be a night hike to the Catalina Isthmus, popular location site for motion pictures. Other activities included canoeing, swimming and fishing.

On May 6 and 7, members of Chi Chapter will serve as aids and judges for the Crescent Bay Council camporee to be held on the U. C. L. A. campus.

**1,000 New Members by
June 10!**

"LET THE GRASS GROW" CAMPAIGN AT MICHIGAN STATE

By Eugene W. Kelley, Historian

The Michigan State campus is noted for its beauty, and Beta Beta Chapter has accepted the responsibility of keeping the students off the grass and thus preserving the beautiful lawns and eliminating unsightly paths. The cooperation of the students and faculty has been good and the project has been a great success.

Another recent project was our assistance in the "Scout Gymkana" held on the campus. Members served as inspectors of the various Scout Troops and as judges and referees of the contests.

Several other projects are in the making, including the second annual interfraternity sing, an Eagle Scout conference, an annual water carnival, radio programs throughout May and June, and an Alpha Phi Omega extension conference for representatives of all colleges in the state.

THINK THIS OVER

(*"What Is Efficiency?" from the Service Call*)

Efficiency is doing things—not wishing you could do them, dreaming about them or wondering if you can do them.

It is knowing how to apply theory to practice, turning defeat into experience and using it to achieve success.

It is the ability to mass one's personality at any time or place and the elimination of weakness, regret, worry and fear.

It is the self-reliance, clothed with modesty, persistence plus politeness and the hand of steel in the velvet glove.

Efficiency is alertness, presence of mind, readiness to adjust one's self to the unexpected, impinging the ego against the combination of events: luck, fate, custom and prejudice—until they give away.

It is purpose, practice, patience, the measure of a man, the real size of his soul, the ability to use one's passions, likes, dislikes, habits, experience, education, mind, body and heart, and not to be used by these things.

It is self-mastery, concentration, vision and common sense . . . and the sum total of all that is in man.

Think this over.

AWARD TO HIGH SENIOR

Alpha Omega Chapter of Kirksville College of Osteopathy and Surgery has offered a merchandise prize to the senior who makes the best average on the comprehensive examinations to be given at the end of the semester. All seniors, regardless of previous scholastic standing, will be eligible for the award.

Alpha Phi Omega contributed its assistance again this spring to the Women's Carnival at Kirksville to raise funds for the annual children's clinic. Reports the president of the Women's League: "A. P. O. members worked steadily building booths, serving as patrolmen throughout the crowd, operating three booths, arranged all electrical appliances and wiring and stayed until the wee hours cleaning up the mess. Our profits this year were greater than ever before and we are grateful especially to Alpha Phi Omega for such splendid cooperation."

BETA THETA JUDGES SCOUT RALLY

By Al Roberts, Past President

The brothers of Beta Theta Chapter at Wisconsin will don their cloaks of Scouting wisdom on May 6 and judge the annual Four Lakes Council Scout Rally. Twenty-five hundred Scouts will echo the days that have passed before us and we're glad to be instrumental in making their activity a great success.

Beta Theta's new meeting set-up calls for a varied program of speakers. Chief among those having spoken are: Professor Walton on "Chemical Warfare," Jack Swan, former Scout of many years in India, Bob Perlman on "Scouting in Wales," and Professor A. T. Armstrong on "Vocational Guidance."

The week end of May 13 will find Beta Theta at the local Council's Camp Tichora putting up a cook shack for Troop camping and building a rustic entrance sign.

**The Cooperation of Every
Chapter is Needed in
Membership Expansion**

ACTIVE ALUMNUS BECOMES SENIOR FACULTY ADVISOR



I. R. Hoener

Active in the growth of Alpha Alpha Chapter through the past six years has been this good brother. It was on December 13, 1933, that Irwin Hoener was inducted into Alpha Phi Omega. After serving in various leadership capacities, he was elected chapter president in 1936. Since his graduation from the University of Illinois he has been a member of the university faculty, and in 1938 was elected senior faculty advisor of his chapter. His brothers recently honored him by the presentation of a key in recognition of his service to Alpha Phi Omega.

FINGERPRINTING AT DRAKE

By L. Paul Stover, President Omega

Omega Chapter aided the Des Moines Junior Chamber of Commerce in sponsoring a voluntary fingerprint drive. More than half of the enrolled students at Drake were fingerprinted for the F. B. I. civilian files.

We built a "fancy" information booth and manned it constantly throughout spring registration. At the booth 500 city maps, 500 "Today's Timely Thoughts" booklets were given out. Our members furnished information and guide service to new students, parents and visitors.

Several of our members helped in the presentation of the "Cavalcade of Scouting," a history of Scouting from its origin to its present importance in world affairs, given during Scout Anniversary Week.



This picture shows the charter members of Beta Kappa Chapter at Central Missouri State Teachers College, Installed December 5, 1938. (The story of this installation appeared in the March issue of TORCH AND TREFOIL.)

WITH AN EYE TO THE BEAUTIFUL

By Wayne F. O'Neill, Historian Alpha Psi

Alpha Psi Chapter of Lehigh University has laid plans for grading, beautifying and making accessible by trails a very beautiful little mountain stream which cascades and tumbles down the side of old South Mountain and disappears into a culvert under the campus proper.

Permission is being sought and plans discussed with the superintendent of grounds to remove the stream from the underground conduit and relocate it in its former path where it may lend itself as an asset to one of the country's most enchanting campuses.

A service indeed this will be to those of Lehigh who have an eye for the beautiful.

A TRAINING CONFERENCE BY BETA OMICRON

By Edmund R. Butch, Historian

An extensive program of training in the form of a Green Bar Course has been offered to the junior leaders of the Scout Troops of this district and it has met with great success.

Our chapter also conducted a court of honor recently for a newly-organized Troop and we plan to extend this service to the other troops of the community.

In campus service we are rapidly gaining recognition. This is evidenced by the fact that we have been selected to design and complete the decorations in the gymnasium for the annual Commencement Ball.

THREE PETITIONS RECEIVED

Petitions for membership in Alpha Phi Omega have been received from the University of California at Berkeley, the College of the City of New York (School of Business and Civic Administration) and the City College of C. C. N. Y.

Information about these groups is being forwarded promptly to the chapters and executive board members for approval.

TAU'S ANNIVERSARY

By Liggett L. Karney, Historian

The eighth annual Founder's Day banquet of Tau Chapter at the University of Florida, held recently in the Florida Union, gave tribute to the work of the twenty-five original charter members who initiated the Alpha Phi Omega program on the Florida campus.

President Robert Parks was toastmaster and Brother Henry Howison, past president, presented an outline of the chapter's plans for the future.

Guest speaker of the occasion was Professor Angus Laird, whose subject was "Courage for the Young Man". Professor Laird stressed the necessity of having a goal toward which to work in life and commended Alpha Phi Omega for its work in helping young men become more useful citizens.

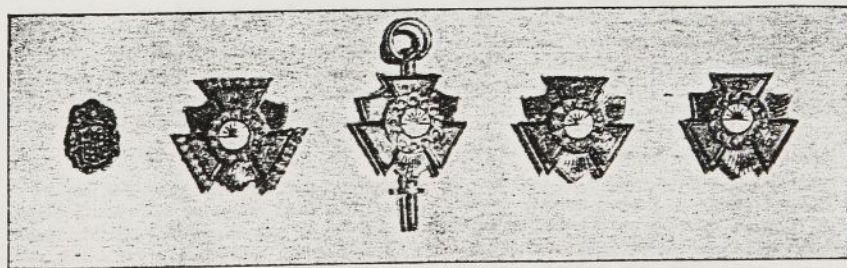
Dr. H. H. Germond, faculty advisor and member of the National Executive Board, presented the chapter a trophy to be awarded annually to the Gainesville Scout Troop which wins the Alpha Phi Omega field meet. Permanent possession of the cup will go the troop which wins it three times in succession.

Spring Outing

Tau Chapter closed its spring pledging this year with an outing for all pledges and members at a summer camp owned by one of the brothers. The trip provided a general good time for all including boating, touch football, eats, singing, story telling, etc.

This was one of the best interest-promoting endeavors that Tau Chapter has ever undertaken, and a similar event is to be included in our rushing program each year.

The Insignia of Alpha Phi Omega Price List



Standard key, gold plated	\$ 3.25
Standard badge, gold plated (shown above, at extreme right)	2.50
Standard badge, 10K	6.50
Standard key, 10K (shown above, in center)	8.50
Standard badge, crown set pearl center plain arms (shown above, fourth from left)	13.25
Standard badge, crown set pearl center and arms (shown above, second from left)	24.25
Standard key, crown set pearl center plain arms	15.00
Standard key, crown set pearl center and arms	26.00
Recognition button, sterling (shown above, at extreme left)	1.00
Recognition button, gold plated	1.50
Recognition button, 10K	2.50

Success to Your Chapter in
the Membership Round-up!

Gleanings from Chapter Correspondence

AUBURN

"The annual freshman competition in five minor sports has been conducted this spring by Delta Chapter. Loving cups will be presented to the winners in golf, tennis, swimming, fencing and rifle marksmanship."

—George H. Perry, Alumni Secretary

SANTA BARBARA

"Under the able direction of Brother Ben Gautier we are putting on a soap box derby May 30. The derby is to be for the local children between the ages of 10 and 15."

"A very enjoyable opportunity was ours on April 27, furnishing entertainment for the girl friends of the delegates at the Southern California Conference of Student Body Presidents. Our services were of course needed only during the hours the conference was in session."

—George Gunterman, Historian

IOWA STATE

"Xi Chapter did another in its series of good turns by maintaining an information booth and serving as ushers and monitors during the annual Iowa Academy of Science Convention held recently on our campus."

—Paul D. Metzler, Historian

NORTH DAKOTA STATE

"Through the efforts of Alpha Lambda Chapter a permanent committee has been selected by the president of North Dakota State for the beautification of the campus."

"The annual spring interfraternity sing will be sponsored by the chapter on all-college day, May 24. The event has been advertised by means of radio announcements."

"A new guide service has been established and has proved very efficient."

—Lloyd Cadwell, Historian

K. C. U.

"At the fourth annual benefit bridge party conducted by Alpha Eta Chapter, April 15, approximately 1000 persons participated and contributed to the maintenance of our scholarship and loan fund."

Bernard Koehler, President

GEORGIA

"I expect within a few days to send you a copy of our handbook of student organizations which has been worked up by Alpha Phi Omega."

"The next piece of work of Beta Zeta Chapter is to assist the dean in a study of housing conditions."

—Dr. A. S. Edwards, Senior Faculty Advisor

CORNELL

"I am confident that the new method of payment of the initiation fee will prove beneficial in the future, as there will be less difficulty in collecting the fees."

—Robert L. Wiggins, President Gamma

NORTHERN ILLINOIS S. T. C.

"Eta Chapter is to sponsor an annual scholarship for some worthy male student here. It will be the only one of its kind on this campus and we are sure it will be appreciated."

"Committees are at work on our annual Camporee and indications point to a very successful affair this year. The regular

weekly swims for Scouts of DeKalb which the chapter sponsors have been going over big and the boys really are having some good times."

—Thomas E. Wise, President

M. I. T.

"I think that Dr. Wyland's suggestion that we have Sunday evening supper meetings at Walker Memorial will go through with a bang. The sentiment so far is strongly in favor of it."

—Richard C. Babish, Vice-President

SYRACUSE

"At our annual banquet recently Professor Gurth Whipple, our senior faculty advisor, gave one of the most enthusiastic and inspiring talks Phi Chapter has ever heard. He has given many of us a clearer understanding of the fundamental principles and purposes of Alpha Phi Omega."

—Helmut Buechner, Treasurer

PURDUE

"We of Alpha Gamma Chapter look forward to the new financial program of Alpha Phi Omega with much hope, anticipating a much stronger organization, both nationally and locally."

—Richard Stradling, President

KANSAS UNIVERSITY

"Lambda chapter recently aided the university by selling one hundred tickets to a Bowl-of-Rice supper, given with the express purpose of raising money for the aid of students in the Far East."

The chapter is now arranging to send one Scout to summer camp—a Scout who could not otherwise attend camp and whose record in his troop merits this award."

—Charles Wright, Jr., Historian

WESTMINSTER

Beta Xi reports three service activities: The refurbishing of the smoking room on the campus, the assistance in soliciting funds for a new Scout cabin subscribed by citizens of the community, and a census in the junior high school to secure names of boys who wanted to be Scouts. Possibly the latter is the most far-reaching. Eighty-four boys were located who wished to become Scouts and this has resulted in the starting of two new troops, one sponsored by the American Legion and the other by the Chamber of Commerce."

—Jack Eairley, President

KANSAS STATE

Most of Pi Chapter's efforts are now directed toward getting the stage set for the curtain, May 14, on a public court of honor in the Manhattan high school auditorium. At this meeting the outstanding Scout of the community will be presented an achievement award by the chapter."

—Jack P. Fuller, President

WASHINGTON STATE

Alpha Xi is really forging ahead. Our new travel bureau is highly successful and has already aided many students. Further detailed reports on this will be submitted for a later issue of TORCH AND TREFOIL."

During high school week-end we had about forty Alpha Phi Omega men ushering and guiding the visitors around the campus."

—Chet Peach, President

CARNEGIE TECH

Brother Russell Cameron has completed the drawing of a four-color pictorial map of the Carnegie Tech campus. Students in the summer session of the Department of Printing will print the map. Next fall it will be distributed at the opening of the semester."

—Harold Quell, Historian

OHIO STATE

After a period of "tough sledding" Alpha Iota Chapter is on the upward trend and we are working hard to make our quota in the membership round-up."

—Karl E. Blumenberg, Historian

CENTRAL MISSOURI TEACHERS

Fifteen members of Beta Kappa Chapter enjoyed an outing the week-end of May 7 at President H. Roe Bartle's ranch near Osceola, Missouri."

—Donal Endsley, Alumni Secretary

INDIANA

"Our chapter has appointed representatives to the campus committee now being organized for placing war refugees (university students abroad) in American universities."

—Robert Plank, Historian

ASSIST IN EXHIBITION NIGHT

By Harold Quell, Historian Kappa

At the annual Carnegie Tech Exhibition Night held on April 28, members of Kappa Chapter served as guides and assisted at the information booths to direct the thousands of people who visited the campus."

On the following day the chapter was host to more than 350 Boy Scouts of the Pittsburgh Council who held their annual Jamboree on the campus. Members of the fraternity assisted in judging the events and the five winning teams were guests for dinner at the campus fraternity houses."

Another recent project in Kappa Chapter is a travel service for students. We are assisting drivers and passengers in "getting-together" for trips at the end of the school year and during holiday periods, in much the same way as is being done in several other Alpha Phi Omega chapters."

Keep the Brandin' Irons Hot
In the Membership Round-up

TORCH and TREFOIL

The Magazine of
Alpha Phi Omega
National Service Fraternity

Issued regularly four times a year in
October, December, March and May.
Subscription price 50c a year

Entered as second class matter February 5,
1938 at the post office at Kansas City, Mo.,
under act of March 3, 1879.

Office of Publication
407 Land Bank Bldg.
Kansas City, Missouri

National Executive Board
of Alpha Phi Omega

Walter W. Head.....St. Louis, Mo.

National Honorary President

H. Roe Bartle.....Kansas City, Mo.

National President

William J. Campbell.....Chicago, Ill.

National First Vice-President

Dr. M. C. Hayes.....DeKalb, Ill.

National Second Vice-President

Sidney B. North.....Kansas City, Mo.

National Secretary

Dr. Edwin C. Johnson.....Chicago, Ill.

National Treasurer

T. W. Lacy.....Kansas City, Mo.

National Field Representative

Dean Francis M. Bacon.....Los Angeles, Cal.

Carl S. Bauman.....St. Louis, Mo.

George H. Charno.....Kansas City, Mo.

Prof John S. Coie.....Pullman, Wash.

Fred G. Davie.....New York, N. Y.

C. M. Finnell.....Chicago, Ill.

James P. Fitch.....Dallas, Texas

Dr. H. H. Germond.....Gainesville, Fla.

Frank R. Horton.....Easton, Pa.

Dean Arno Nowotny.....Austin, Texas

Harold F. Pote.....New York, N. Y.

Dr. Louis H. Renfrow.....St. Louis, Mo.

Prof. Kent D. Shaffer.....Pittsburgh, Pa.

Dr. Lester I. Tavel.....Platte City, Mo.

Prof. A. L. Thomas.....Auburn, Ala.

Dr. Ray O. Wyland.....New York, N. Y.

ROSTER OF CHAPTERS

Alpha Phi Omega

ALABAMA

Delta - Alabama Polytechnic Institute.....Auburn

ARKANSAS

Beta Rho - University of Arkansas.....Fayetteville

CALIFORNIA

Zeta - Stanford University.....Stanford

Chi - University of California at Los Angeles.....Los Angeles

Psi - Santa Barbara State College.....27 Santa Barbara

Alpha Delta - San Diego State College.....San Diego

Alpha Kappa - University of Southern California.....Los Angeles

FLORIDA

Tau - University of Florida.....Gainesville

Alpha Pi - University of Miami.....Coral Gables

GEORGIA

Beta Zeta - University of Georgia.....Athens

ILLINOIS

Eta - Northern Illinois State Teachers College.....DeKalb

Sigma - Northwestern University.....Evanston

Alpha Alpha - University of Illinois.....Urbana

Beta Gamma - Central Y. M. C. A. College.....Chicago

INDIANA

Mu - Indiana University.....Bloomington

Alpha Gamma - Purdue University.....Lafayette

Alpha Tau - Butler University.....Indianapolis

Alpha Upsilon - DePauw University.....Greencastle

Beta Lambda - Indiana State Teachers College.....Terre Haute

IOWA

Xi - Iowa State College.....Ames

Omicron - University of Iowa.....Iowa City

Omega - Drake University.....Des Moines

Beta Epsilon - Iowa State Teachers College.....Cedar Falls

KANSAS

Lambda - University of Kansas.....Lawrence

Pi - Kansas State College.....Manhattan

Beta Alpha - University of Wichita.....Wichita

Beta Tau - Washburn College.....Topeka

KENTUCKY

Alpha Zeta - University of Kentucky.....Lexington

LOUISIANA

Alpha Epsilon - Louisiana State University.....Baton Rouge

Beta Phi - Southwestern Louisiana Institute.....Lafayette

MASSACHUSETTS

Alpha Chi - Massachusetts Institute of Technology.....Cambridge

MICHIGAN

Beta Beta - Michigan State College.....East Lansing

MISSOURI

Epsilon - Northeast Missouri State Teachers College.....Kirksville

Iota - Park College.....Parkville

Alpha Eta - University of Kansas City.....Kansas City

Alpha Mu - William Jewell College.....Liberty

Alpha Phi - Washington University.....St. Louis

Alpha Omega - Kirksville College of Osteopathy & Surgery.....Kirksville

Beta Eta - University of Missouri.....Columbia

Beta Kappa - Central Missouri State Teachers College.....Warrensburg

Beta Mu - Southwest Missouri State Teachers College.....Springfield

Beta Xi - Westminster College.....Fulton

Beta Omicron - Missouri School of Mines and Metallurgy.....Rolla

Beta Upsilon - Northwest Missouri State Teachers College.....Maryville

Beta Psi - Southeast Missouri State Teachers College.....Cape Girardeau

NEBRASKA

Alpha Theta - University of Omaha.....Omaha

Alpha Sigma - University of Nebraska.....Lincoln

NEW JERSEY

Nu - Upsala College.....East Orange

NEW YORK

Gamma - Cornell University.....Ithaca

Phi - Syracuse University.....Syracuse

Beta Iota - New York University.....New York

NORTH CAROLINA

Rho - University of North Carolina.....Chapel Hill

NORTH DAKOTA

Alpha Lambda - North Dakota Agricultural College.....Fargo

OHIO

Alpha Iota - Ohio State University.....Columbus

OKLAHOMA

Beta Nu - Northeastern State Teachers College.....Tahlequah

Beta Pi - University of Tulsa.....Tulsa

Beta Chi - Oklahoma City University.....Oklahoma City

Beta Omega - Oklahoma Baptist University.....Shawnee

PENNSYLVANIA

Alpha - Lafayette College.....Easton

Beta - University of Pittsburgh (inactive).....Pittsburgh

Kappa - Carnegie Tech.....Pittsburgh

Alpha Beta - Pennsylvania State College.....State College

Alpha Psi - Lehigh University.....Bethlehem

TEXAS

Alpha Omicron - Southern Methodist University.....47 Dallas

Alpha Rho - University of Texas.....Austin

Beta Delta - East Texas State Teachers College.....Commerce

Beta Sigma - Texas Technological College.....Lubbock

VIRGINIA

Theta - University of Virginia.....Charlottesville

WASHINGTON

Alpha Xi - Washington State College.....Pullman

WISCONSIN

Upsilon - Milwaukee State Teachers College.....Milwaukee

Alpha Nu - St. Norbert College.....West DePere

Beta Theta - University of Wisconsin.....Madison