



TORCH AND TREFOIL



A GAL MEETS "MR. BUNNY"

Fun and excitement reigned supreme when the members of Delta Lambda Chapter put on an Easter party for the boys and girls of Children's Home in Cedar Rapids, Iowa. An egg hunt was held throughout the home's large yard. Prizes were awarded for numbered eggs and for the most eggs found. The only question was: Who enjoyed the party most, the forty children or the APO brothers? The photograph is by Brother George Henry.

VOLUME 24, NUMBER 5
MAY, 1949

National Officers of Alpha Phi Omega

Dean Arno Nowotny	Austin, Texas
<i>National President</i>	
Prof. Daniel DenUyl	West Lafayette, Ind.
<i>National First Vice President</i>	
Prof. Harry C. Barnett	East Lansing, Mich.
<i>National Second Vice President</i>	
C. M. Finnell	Chicago, Illinois
<i>National Third Vice President</i>	
Frank D. Wood	Atlanta, Georgia
<i>National Treasurer</i>	
George F. Cahill	West Lafayette, Ind.
<i>National Editor</i>	
Sidney B. North	Kansas City, Mo.
<i>National Secretary</i>	

National Executive Board The Officers and

Dr. H. Roe Bartle	Kansas City, Mo.
C. J. Carlson	Los Angeles, Calif.
George H. Charno	Kansas City, Mo.
M. R. Disborough	Des Moines, Iowa
Dr. M. C. Hayes	De Kalb, Illinois
Dr. D. E. Keefer	Albuquerque, New Mexico
Del Jay Kinney	Cleveland Heights, Ohio
James McDaniels	Los Angeles, Calif.
Dean Paul M. Petersen	Carrollton, Georgia
Harold F. Pote	New York, New York
Joseph Scanlon	Seattle, Washington
Prof. Kent D. Shaffer	Pittsburgh, Penn.
Armand Spizzirri	Des Moines, Iowa
Prof. A. L. Thomas	Auburn, Alabama
Thomas V. Waber	Detroit, Michigan
Dr. Ray O. Wyland	New York, New York
Dean A. C. Zumbrennen	Marshall, Mo.

"BOX SCORE"

Present number of chapters, including petitions approved	194
Total number of members since founding	24,312
Number of copies of this issue	12,000

IN MEMORIAM

William E. Ehlig, Sr.

*Charter member and first life member
of Delta Theta Chapter
University of Louisville*

April 2, 1949

TORCH and TREFOIL

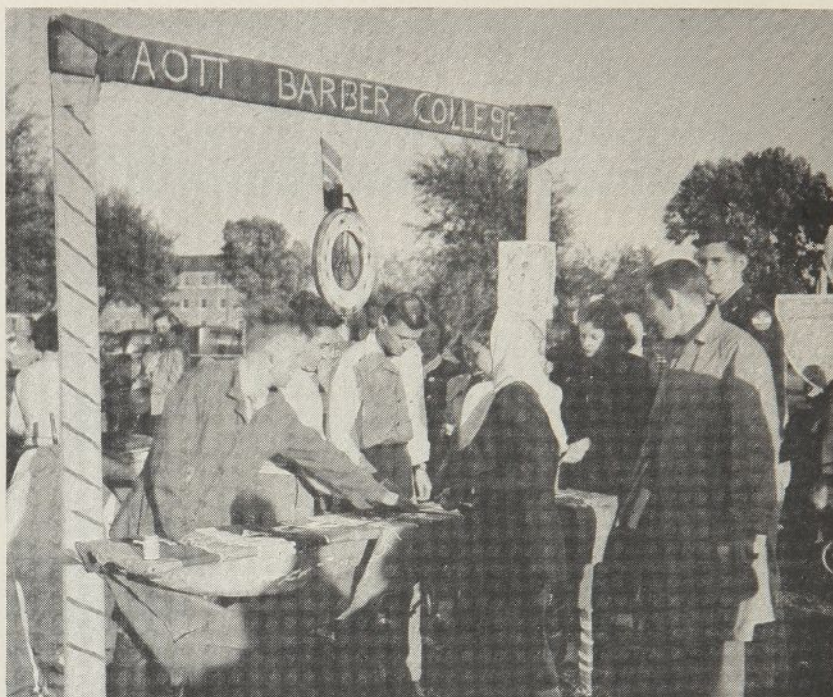
May, 1949

Issued regularly eight times a year in
September, October, November, December,
February, March, April and May.

Subscription price \$1.00 a year.

Entered as second class matter February 5,
1938, at the post office at Kansas City, Mo.,
under act of March 3, 1879. Office of pub-
lication, 407 Land Bank Bldg., Kansas City,
Missouri.

CARNIVAL AT TULANE FOR THE UNIVERSITY CHEST



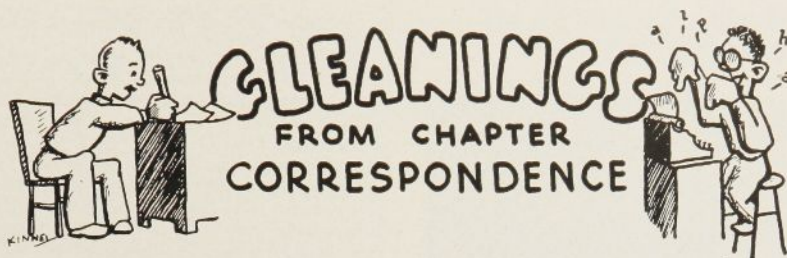
Of \$2,200 collected in the University Chest drive at Tulane University, \$900 came from an all-campus Carnival. Gamma Upsilon Chapter of APO sponsored both the drive and the carnival. The above picture shows Alpha Omicron Pi and Kappa Sigma booth (they joined forces to operate one booth) with a wheel of chance. Thirty different campus organizations operated booths and concessions to comprise the fair.

EDITORIAL

To the patron of a great theater there appears on the stage an illusion of reality so great as to captivate his senses. A visit backstage by this patron would readily reveal the many component parts which, when pooled together, give the impression of vivid reality. The props, scenery, make-up, and costumes can be individually observed and studied. Each of these contributes its proportionate part to the total effectiveness of the production.

Surely none of us would expect a similarly simple glance at the national office of Alpha Phi Omega to reveal the intricate mechanism of its efficient operation. Nor should we expect to discern the operational procedures of an APO chapter by attending one chapter meeting. The many details in the effective execution of our service program have long since made necessary the division of responsibility. The "committee system" has proven to be the most effective method of accomplishing this division, and affords us, as individuals, a unique incentive and opportunity. The organizational structure of our chapters is best revealed by our participation in a committee's successful operation. This experience will better equip us to meet other chapter problems and to understand the over all organizational structure of our fraternity.

Thus it is only through this gradual educational process that we may come to fully appreciate the intricate mechanism which is necessary for the effective production of service by the chapter. We know that a job well done equips us better to tackle the next job. We also know that, with knowledge comes understanding and with understanding comes better service.



Beta Theta Chapter

University of Wisconsin

A Senior Scout Career Conference was held recently on the Wisconsin campus under sponsorship of the Beta Theta Chapter. There were 178 Senior Scouts in attendance. The program included counseling in twelve various fields, tours of the University and the city, and an address by Leroy Luberg, university assistant vice-president in charge of academic affairs. Roundy Coughlin, State Journal columnist was toastmaster for the evening banquet.

—James E. Morrow, Treasurer.

Beta Eta Chapter

University of Missouri

We have secured an office equipped with desk and file cabinet and have been promised a telephone. Perhaps our most outstanding recent project is the Group Merit Award Cup which is intended to stimulate and recognize groups for outstanding Service, Leadership and Scholarship. The award will be presented for the first time in May on Honor Tap Day, and thereafter each year for ten years.

—Ernest Castner, Past President.

Beta Lambda Chapter

Indiana State Teachers College

Our work in the recent Cancer Campaign has been very successful.

—Bob Still, Secretary.

Registering Scouters at Regional Conference



Brothers of Eta Theta Chapter, Idaho State College, are shown registering Scouters at the recent Regional Annual Meeting held in Pocatello. At the desk are Ralph Hale, chapter president (in the rear), and Ed Amundson, vice president.

Gamma Omega Chapter

University Heights, New York University

Gamma Omega has done it again. We established and conducted, for the first time at NYU, a successful Book Exchange. Due to great student interest, plans are underway for a greater expansion of facilities.

—Milt Berkewitz, Historian.

Zeta Rho Chapter

Wittenberg College

Each Friday evening, swimming classes are being conducted for local Scouts in the college pool, and plans are underway to form "Court of Honor" teams to assist the Tecumseh Council. We will also serve as judges for a Camporee.

—Wolfgang Haller, Publicity Chairman.

"Big Man" at Butler



Lewis Flour of Lambda Chi Alpha (left) accepts trophy as winner of the "Big Man on the Campus" contest at Butler University. Robert I. Vick, president of Alpha Tau Chapter of APO, presents the trophy. The chapter sponsored the event. All fraternities and independent organizations nominated candidates who received one vote for each penny contributed to the Easter Seal Campaign. The contest resulted in \$287.17 for the Marion County Society for Crippled Children and Adults, Inc. General chairman was Brother Paul Salzman.

A Second War Orphan Is Sponsored by Delta Sigma Chapter

As an international service, Delta Sigma Chapter at the University of Connecticut has "adopted" a second war orphan. The first one was a young Belgium boy, and he has now become of age and is working in a factory, so the chapter is now sponsoring another needy lad, this time a Polish boy.

His name is Kazimierz Miszczyk, thirteen years of age. "Kasik", as he is known, is the older of two brothers. His parents were killed in the early days of the invasion of Poland, during an air bombardment. He does not know the date of his birth or where he was born. After his parents' tragic death, a neighbor took Kazik and his brother to maintain them in her home. Small as Kazik was, he realized that they were a burden to her, and he got a little job at the railway station selling papers, soda-water, cigarettes and matches. One day as he jumped from a moving train, he fell under the wheels and lost his right leg. Conditions grew worse for this kindly neighbor and when Kazik left the hospital, he was placed in a colony for crippled children, a colony that is now supported through "Foster Parents Plan for War Children, Inc."

Although thirteen, Kazik is only in the third grade. He is an intelligent, obedient boy, with a pleasant personality. He is of average size for his years, with hazel eyes and blonde hair. Despite his handicap, Kazik is not embittered. He is an independent lad and spends a great deal of his time in a carpenter workshop learning the trade as he wants to be a carpenter. Kazik loves nature and is well informed and interested about bird and plant life. He is considered a good companion, well liked by his fellows.

Kazik has known much suffering and with his childhood shattered and gone, he now approaches adolescence. He must have understanding care and guidance toward physical health, nervous stability and self-reliance. Encouragement from Foster Parents will mean much to this lad.

DISTINGUISHED SERVICE AWARD RECEIVED BY GAMMA DELTA CHAPTER



The American Cancer Society has presented a certificate of outstanding service to Gamma Delta Chapter of APO at CCNY, in recognition of work in the 1948 Cancer Society Campaign. This picture shows the certificate being presented. Left to right are Fred Naddle, president, receiving the award from Dean Thomas L. Norton of the School of Business, CCNY, while Mr. Ira Berman, chairman of the Advisory Committee looks on.

Gamma Psi Chapter

University of Minnesota

Our winter quarter has been the busiest one in years here. We completed almost a dozen projects and have had two social events. Our biggest project has been in assisting the psychology department to make an instructor rating survey. This involved polling over eight-hundred classes in the college of Science, Literature, and Arts.

—Al Johnson, Pledgemaster.

Beta Upsilon Chapter

Northwest Missouri State College

Our chapter has recently published a student directory including the names, local addresses, telephone numbers, classification and home addresses of all students, faculty members and office help on the campus. Tribute is paid to Mr. Myron P. Rose, Chairman of the Advisory Committee, who was instrumental in making this project a success.

—John M. Tilton, Past President.

ETA GAMMA CHAPTER AT UNION COLLEGE



Union College, "Mother of Fraternities", has received the charter of Eta Gamma Chapter of Alpha Phi Omega. Brother Kent D. Shaffer officiated at the ceremonies on behalf of the national executive board, and the ritual was performed by the degree team of Epsilon Zeta Chapter of Rensselaer Polytechnic Institute.

Alpha Alpha Chapter

University of Illinois

\$516.35 was collected at a penny a vote at our Ugly Man contest March 8 to 10. There were thirteen men nominated as contestants by various sororities, fraternities and independent houses and most of these groups put on strenuous campaigns for their candidates featuring posters, parades, radio campaigning and various types of stunts. The winner was Leon "Buck" Hersog of Tau Epsilon Phi. The presentation of a plaque was made at the annual Military Ball, one of the leading campus social events. We also arranged for the Ugly Man to be guest of honor at a dinner at President George Stoddard's home. We have also recently conducted a football passing contest at the Illinois High School Circus held at the Armory during the State Basketball Tournament.

—Glen Brolander, President.

Delta Epsilon Chapter

Illinois Institute of Technology

We are planning a giant fund drive which will include the March of Dimes, Red Cross, Community Chest, etc., and this drive will replace all of the smaller and more frequent ones held throughout the year. Another major item in our program will be removal of the pillars which stand in our gymnasium. These monstrosities which stand between two basketball courts limit the amount of spectator space and by removing them we can add space for about 100 more persons. This will be a major task but we hope to secure the cooperation of all.

—James V. Fitzpatrick, Jr.,
Corresponding Secretary.

Beta Iota Chapter

New York University

Beta Iota Chapter has seldom been as busy along the lines of service as is true this semester. We can boast of a considerable number of projects, either finished or underway. The first job at the beginning of each semester is the ushering at freshmen assemblies, conducting of tours and cataloguing of the extra-curricular activities in which the freshmen indicate their interests. This job was finished in record time. We have again opened our ticket agency which undertakes to sell tickets for all of the student organizations located on this campus, and this has met with fine success. On March 4 we sponsored a lecture and movies in connection with the Heart Campaign, and in addition we have offered our service to organizations for aiding the blind. This mentions just a few of the services being conducted by our chapter.

—Fred Grunewald, Secretary.

Epsilon Lambda Chapter

Michigan College of Mining and Technology

During the Michigan Tech Winter Carnival in February, our chapter conducted "Operation Zero" for the Scout Troops of this area. A fine sense of cooperation existed. Troops came as far as forty miles to participate. Scouts exhibited their skills, while members of APO were judges. All Troops expressed a desire for another similar event. The chapter also aided in constructing a float for the Winter Queen.

—Earl R. Gaber, Historian.

New Record of 4,600 Hours of Service in One Semester by Alpha Rho Chapter

In the fall semester of 1948, Alpha Rho Chapter at the University of Texas rolled up a new national record of 4,600 hours of service rendered.

A hard-working Executive Committee, an enthusiastic pledge class, and a very effective phoning committee for members and pledges were the main factors producing the big results.

The projects fell into six main divisions: Orientation-Registration, 574 hours; Community projects, 247 hours; Elections, 1440 hours; Ushering, 463.5 hours; School-spirit activities, 824.5 hours; Other campus projects, 1071 hours.

Members nosed out the pledges in a close race for total hours, 2,357 to 2,263, but the fifty-one pledges averaged forty-five service hours each, as compared to the approximately twenty-five hours for each of the almost 100 active members.

President Bart Strayhorn led the members with 133 hours, followed by the vice president in charge of manpower, Ted Dunn, with 125 hours. Tuck Focht who helped engineer the orientation and registration totalled 101.5 hours.

The projects have included service at registration, maintaining information booths, giving blood to an 84-year-old man, running a teen-age canteen, serving as honor guards for Eagle Scout award presentations, operating a check room at the Governors Inaugural Ball, manning seventeen booths for eight hours a day during primary and run-off elections, contributing \$1,530 to the campus chest from an ugly man contest, efficient and courteous ushering which has assured the chapter of a large share of the much-sought-after cultural entertainment ushering, efforts to enliven the school spirit among the 16,000 students, conducting student opinion surveys, working on the campus chest campaign, and numerous other services.

Alpha Omicron Chapter

Southern Methodist University

SMU elections were again supervised recently by Alpha Phi Omega and the members handled this in such a manner that we have been asked to assume responsibility for running the polls in future elections. The leading independent basketball team was pitted against the freshman team of SMU as feature attraction of a Benefit Sports Nite sponsored by the Athletic Department and APO. The visiting team won but APO collected, entirely expense free, \$250 for the March of Dimes. Our annual Ugly Man contest received fine publicity and contributed more than enough for the two iron lungs we have donated for the fight against infantile paralysis.

—Lloyd W. Perkins, Historian.

Zeta Chapter

Stanford University

The campus projects chairman reports that our members working at the Hoover Library have completed more than 90 hours of sorting and boxing books.

—Herbert Greenberg, Secretary.

PRESENTATION OF HONORARY MEMBERSHIP AT SPRINGFIELD COLLEGE



President Paul M. Limbert of Springfield College (Massachusetts) is shown receiving the certificate of honorary membership of Alpha Phi Omega from Mr. John H. Bunn, Chairman of the Advisory Committee of Gamma Eta Chapter and State Chairman of APO. Seated left to right are Past President, Charles Swart; Past President Mark Daane and Coach E. W. Pennock.

Epsilon Omicron Chapter

Long Island University

One of our most important recent projects was work upon the Heart Campaign and the Brooklyn Tuberculosis Association Drive. On the campus we have supervised the student elections and aided in Freshman orientation and we have a new student handbook ready to publish as soon as it receives the Dean's approval.

—The Service Committee.

Pi Chapter

Kansas State College

Our March of Dimes Drive brought over \$200 for the infantile paralysis fund and we are also handling the Red Cross campaign. For the second year Scouts were invited to attend the Engineers Open House in March and were given a tour of the Engineering School. We also operated the concession stand at a recent dance.

—Phil True.

ETA EPSILON CHAPTER AT JAMES MILLIKIN UNIVERSITY



Shown here are the charter members of Eta Epsilon Chapter. The installation was conducted by Brothers Daniel DenUyl and George F. Cahill of the national executive board, with the ritual being performed by brothers of Delta Psi Chapter of Eastern Illinois State College.

ZETA KAPPA CHAPTER, BOWLING GREEN STATE UNIVERSITY



This is the first picture of the charter members of Zeta Kappa Chapter installed last May at Bowling Green State University, Bowling Green, Ohio. Brother Del Jay Kinney officiated on behalf of the national executive board and the ritual was conducted by the degree team of Alpha Iota Chapter, Ohio State University. This new chapter is maintaining an enthusiastic program on the campus.

Opportunities in the Professional Service of Scouting

By Ben Conger,

Assistant Director, Professional Training, BSA

The Boy Scouts of America in 1949 and 1950 will need approximately 300 new Professional Leaders annually, many of whom may be present members of Alpha Phi Omega. Field Executive positions are available in nearly all sections of the country. The Field Executive has a responsibility for one, two or three Districts which are sub-divisions of the Council. He promotes the organization of new Scout Units in these Districts and works with the Commissioner Staff and District Committee in providing the assistance which Unit Leaders need to carry out a successful program with their boys. The Field Executive is employed by the Local Council and he is responsible to the Scout Executive.

The requirements for admission to this profession includes Scouting experience, preferably as both a boy and as a leader, college background, personal qualities in keeping with Scouting ideals, and the ability to work effectively with people. A liking for people and the ability to enlist the support of competent men on behalf of the local Scouting activities is important in considering the career. To assist the college man in finding out more about the work of a professional leader, the Professional Training Service of the Boy Scouts of America has prepared an Exploration Program which can be carried out on free evenings and week-ends while in college. Ideally the program will begin in the junior year or earlier. A pamphlet entitled "Exploring a Professional Career in Scouting" may be secured by writing to the Division of Personnel, 2 Park Avenue, New York. This serves as a route-map in the study of this field.

The Exploration plan operates under the guidance of the Scout Executive in the college community or an experienced member of his staff. For those who plan to make Scouting their life work the program provides an excellent pre-training school background. The subsequent 45-day National Training School at Schiff Scout Reservation at Mendham, New Jersey, is more meaningful to the man who has had this pre-training school experience.

Seniors graduating should get in touch with their nearest Local Scout Executive if they are seriously interested in this field.

Beta Epsilon Chapter

Iowa State Teachers College

Our Chapter has opened a book exchange which is available to students twice each quarter and the members helped the Dean of Men at registration. The student body is well informed of our projects and the new pledges and members are becoming increasingly interested in the fraternity. We have started operating the Lost and Found Department of ISTC which we hope will be beneficial to the student body.

—Perry A. Chapdelaine, Chairman
Advisory Committee.

Epsilon Xi Chapter

Our Spring quarter is full of activities including assistance in setting up the local Scout Exposition on April 29, sponsoring of a carnival on the campus with the proceeds to go toward the erection of a memorial chapel and assistance at the annual Scout Camporee.

—Don Riegel,
Corresponding Secretary.

Zeta Alpha Chapter

Bradley University

Publicity in the *Peoria Journal* has given growing recognition to the work of Zeta Alpha Chapter on the Bradley campus and in the community. The articles have mentioned our many services being conducted by the more than fifty members of the chapter. We are not resting on our laurels but are continuing to pile up an impressive record of projects.

—Hugh Abel, Historian.

Gamma Mu Chapter

Evansville College

Our Ugly Man Contest held last November provided funds for purchasing Thanksgiving baskets for needy families in the Evansville area. The total raised was \$146.15, the largest amount ever solicited by any organization for any benevolent purpose on our campus. Then the success of our March of Dimes Drive topped this with \$151.36, representing 300% increase over last year. We anticipate initiating fifteen new members this Spring.

—Martin Hutchings, Secretary.

Alpha Xi Chapter

Washington State College

Since there are five main service organizations on the Washington State campus, we are seeking a better coordinated working program among all of these groups. Several good ideas brought back from the national convention have been put into use in our chapter. Our immediate major project is the annual Handsome Harry Contest from which funds will be contributed toward a needed service project on the campus.

—Terry Ishihara, Publicity Chairman.

Zeta Gamma Chapter

Valparaiso University

Our chapter is sponsoring a District Scout Camporee in Valparaiso. As a service to other chapters, we are making available to the national office a quantity of bulletins which describe the planning and conducting of this Camporee and the booklets will be distributed to chapters desiring them.

—Robert G. Loucks, President.

Beta Zeta Chapter*University of Georgia*

We raised approximately \$1600 for the Infantile Paralysis Fund this year and have several other projects underway. We have invited Delta Iota Chapter of Mercer University to attend a party and hope to have members of Gamma Zeta Chapter of Georgia Tech visit us on May 13.

—Joe C. Mitchell, President.

Delta Tau Chapter*University of New Mexico*

We celebrated our Founders' Day with a dinner and award ceremonies. All of the past presidents and more than half the chapter members were present, coming from as far as St. Louis to participate. A gold distinguished service key was presented to Dr. Daryle E. Keefer, Registrar and Chairman of our Advisory Committee, who serves as member of our National Executive Board. This was in recognition of his outstanding cooperation and support of Alpha Phi Omega and Scouting. Speakers of the evening included Dr. Tom L. Popejoy, President of the University; Dean H. U. Mathany, Dean of Men; Rev. Hank Hayden; Dr. G. Ward Fenley of the University News Bureau; Mr. Hugo Olsen, Scout Executive; and Professor W. J. Harmeyer of the faculty. Entertainment included movies and harp and violin music.

—Gene Langseth, President.

Chi Chapter*UCLA*

A joint executive meeting was recently held for Chi, Alpha Kappa and Epsilon Chi Chapters. We exchanged views, and all of us profited by this association. Collections have been started for the University Camp, a summer camp sponsored by the Associated Students of UCLA for the benefit of underprivileged children. Our part in this collection is three-fold, including polling the class rooms to facilitate the collecting, providing publicity for the collection, such as a tent and model camp, and handling some of the collections.

David H. Carlisle, Publicity Chairman.

Zeta Pi Chapter*Wayne University*

Forty orthopedic patients were guests of the Wayne University Chapter of APO at a performance of "Call Our Bluff", men's show on the campus. Another project is collection of funds for CARE for sending packages to Europe.

—The Detroit Collegian.

Delta Eta Chapter*Oregon State College*

We sponsored an annual window display contest during Scout Anniversary Week. The first prize was one week at camp for a Scout in the troop which had the best window. We also gave a fifteen-minute radio program about Scouting over radio station KRUL in Corvallis. Plans are underway for the "Notebooks for Foreign Students" drive, and we recently aided in the chest X-Ray campaign among students.

—Marvin L. Davis, Historian.

ETA DELTA CHAPTER AT KEENE TEACHERS COLLEGE

The first chapter in New Hampshire was established December 12, 1948, when Eta Delta Chapter received its charter at the Keene Teachers College. Officiating for the fraternity was Dr. Ray O. Wyland of the national executive board, with the ritual being conducted by Delta Nu Chapter of Yale University. Dr. Young, president of the college, received the charter. This picture shows the active members and advisors of the new chapter.

Eta Delta Chapter*Keene Teachers College*

Our big project, "The Campus Club", is a tremendous success. The entire business is run on a nonprofit basis. We sell coffee,

doughnuts, sandwiches, milk, school supplies, school clothing, etc. Members of Alpha Phi Omega donate their services for operating this establishment throughout each day.

—Barton Van Wie, Secretary.

**EPSILON CHI CHAPTER,
LOS ANGELES CITY-STATE COLLEGE**

This is the first picture of the charter members of Epsilon Chi Chapter installed last Spring at Los Angeles City-State College. They have established an outstanding service program on the campus.

Delta Zeta Chapter*University of Pennsylvania*

In our Book Mart conducted at the beginning of the Spring semester, books were handled on a consignment basis. Our function was to bring buyers and sellers together, not to make a profit, and that is the reason we had so much success. A committee made a survey of stores pricing the most popular books. It was found that they bought second-hand books for 40% of the original selling price and sold them for 80% on the average. Therefore, it was decided to sell our books at 60% of original selling price plus a nominal handling charge of 15c and to give the owner (seller) of the book the full 60%.

The next question was to secure approval of the Dean of Student Affairs, as we were actually going into competition with the Houston Hall Book store. After about two months of waiting, the approval finally arrived. The Office of Student Affairs was also instrumental in helping us obtain a location. They gave us what was formerly the Navy store-room in the basement of one of the dorms. This was ideal for it already had built-in shelves.

Close control was kept on every transaction. We took in 778 books and sold 404 of them or 52%. This is considered excellent for it was not only the Spring semester, but also some of the books received were old and obsolete books which are no longer being used. The percentage of sales of useful books would be considerably higher. Next semester we hope to have better publicity, for many did not know that the Book Mart existed or where to find it. The brothers seemed to receive great pleasure out of running the Book Mart and nearly everyone helped.

—Edward J. Gentino, President.

Gamma Beta Chapter*San Jose State College*

We began our activities this quarter by giving the Bindex dividers to the students of the college and also conducted our book exchange. During the past summer the committee in charge of the Bindex contacted the merchants and sold advertising space on the dividers. The money received for these is earmarked for the scholarship fund started by this chapter in 1940. The funds from the book exchange have been used for service projects, a few of which have recently included purchase of radios for the health cottage and placing pencil sharpeners in needed locations around the campus and providing lights for the barbecue pit which we constructed last year.

—Ed Burnham, Publicity Chairman.

Alpha Delta Chapter*San Diego State College*

One of our most recent activities has been to operate teams of solicitors in a designated area in the campaign for funds to build a new Scout headquarters for the San Diego Area. At last report the goal of \$50,000 had been nearly reached. On the campus we conduct a regular early morning traffic control for students in order to insure safety and we are conducting a regular information desk in the Associated Men's Lounge.

—George L. Schuler, Secretary.

Alpha Kappa Chapter*University of Southern California*

During registration at the beginning of this semester, Alpha Kappa Chapter maintained an information table and a board showing which classes had maximum enrollment. At Christmas time we conducted a vacation car pool and we recently ushered at two benefit performances given by Trovets, campus veterans organization. In January we had a steak dinner and dance at Camp Arthur Letts, a local Scout camp, in honor of our newly initiated members.

—Fred E. Owen,
Corresponding Secretary.

Gamma Theta Chapter*University of Colorado*

Our chapter has prepared plans for a permanent guide service on the campus to be conducted in cooperation with Spur, Office of Admissions and the Social Co-ordinator. We are also starting a lost-and-found service for the university.

—Ewart O'Neill, Historian.

Delta Mu Chapter*Kansas State Teachers College, Pittsburg*

Our latest pledge class was a very ambitious group. In competition with the active members in a work-hour contest, a very successful Ugly Man Contest was conducted. The proceeds are being used to build weather-proof bulletin boards for the campus. A Valentine's Day dance was held recently.

—Robert Greenwood, Secretary.

Omicron Chapter*University of Iowa*

In February we initiated twenty excellent new members. We recently began a series of fifteen minute radio broadcasts, the first two of which concern our national organization and our local service program, and the next will deal with our "Best Citizen Award" which will, as usual, be presented to some townspeople this Spring. In cooperation with our local American Legion and Junior Chamber of Commerce, we are undertaking the "scot-lite" bicycle project here in Iowa City. The latest report concerning the Finnish boy, whom we sponsor, indicates that he is well and happy.

—Ed Jochumsen, Jr., Publicity Chairman.

Omega Chapter*Drake University*

In connection with the Drake Relays, a Senior Scout Visitation Day was held on April 20, sponsored by Omega Chapter. This was a "Vocational Expedition" which gave the boys fun, Scout fellowship and education.

—James C. Langridge,
Director Special Events.

Eta Beta Chapter*Simpson College*

Eta Beta is growing both in membership and in service rendered. We have recently cooperated with the local Red Cross officials in conducting their local fund raising campaign, and in conjunction with the Iowa State and Drake Chapters we helped present an Alpha Phi Omega booth at the annual Scout Exposition in Des Moines.

—James C. Hickman, Historian.

Beta Beta Chapter*Michigan State College*

We had a "Mile of Dimes" on the sidewalk and on a table in the Union for the Infantile Paralysis Fund and this really attracted attention. During the same week the annual Farmer's Week at MSC was held at which about 25,000 farmers were in attendance and we maintained an information booth in the Union and helped pack light lunches to be distributed to the visitors. We have prepared a form letter to be sent to Scout Executives in an effort to spread information about APO among fellows in Scouting before they arrive on the campus.

—James R. Carr, Past President.

Beta Alpha Chapter*University of Wichita*

On March 14 credentials of Alpha Phi Omega were presented to Dr. W. M. Jardine, President of the University of Wichita, and we were honored to have Dr. H. Roe Bartle, past National President, as our guest to officiate on behalf of the fraternity at that time.

—Fred Schumaker, President.

Zeta Mu Chapter*Catholic University of America*

"The pledge class has conducted several projects among which has been a Red Cross blood donor drive for which a booth was maintained in one of the main buildings on the campus.

—John M. Russell, Jr., Secretary.

Epsilon Xi Chapter*Colorado A & M College*

At present we are completing plans for a carnival to raise funds for the Green Memorial Chapel, which is to be built on the Aggie campus. We have twenty-four organizations on the campus participating and have the backing of the school and townspeople, so that we should have a very successful event.

—Norlyn L. Allison,
Chairman Service Committee.

Gamma Gamma Chapter*University of California*

We have just finished collecting \$913.46 in an Ugliest Man Contest for the World Student Service Fund. We assisted with men's counseling at the beginning of the term and are planning to help the election board when the ASUC elections are held in the latter part of May. We will be in charge of the field events at the Council Camporee this Spring and are sponsoring a five-chapter picnic on May 21 for Zeta, Eta Alpha, Gamma Beta, Gamma Gamma and the preparatory group at San Francisco City College.

—Robert E. Barns, President.

Psi Chapter*Santa Barbara College, University of California*

Work completed by Psi Chapter for improvements at the college cabin has included building of a retaining wall, digging a new well and building new tables and benches. Our chapter directed the homecoming parade and recently installed new filing cabinets in the chapter office.

—Gene Boaden.