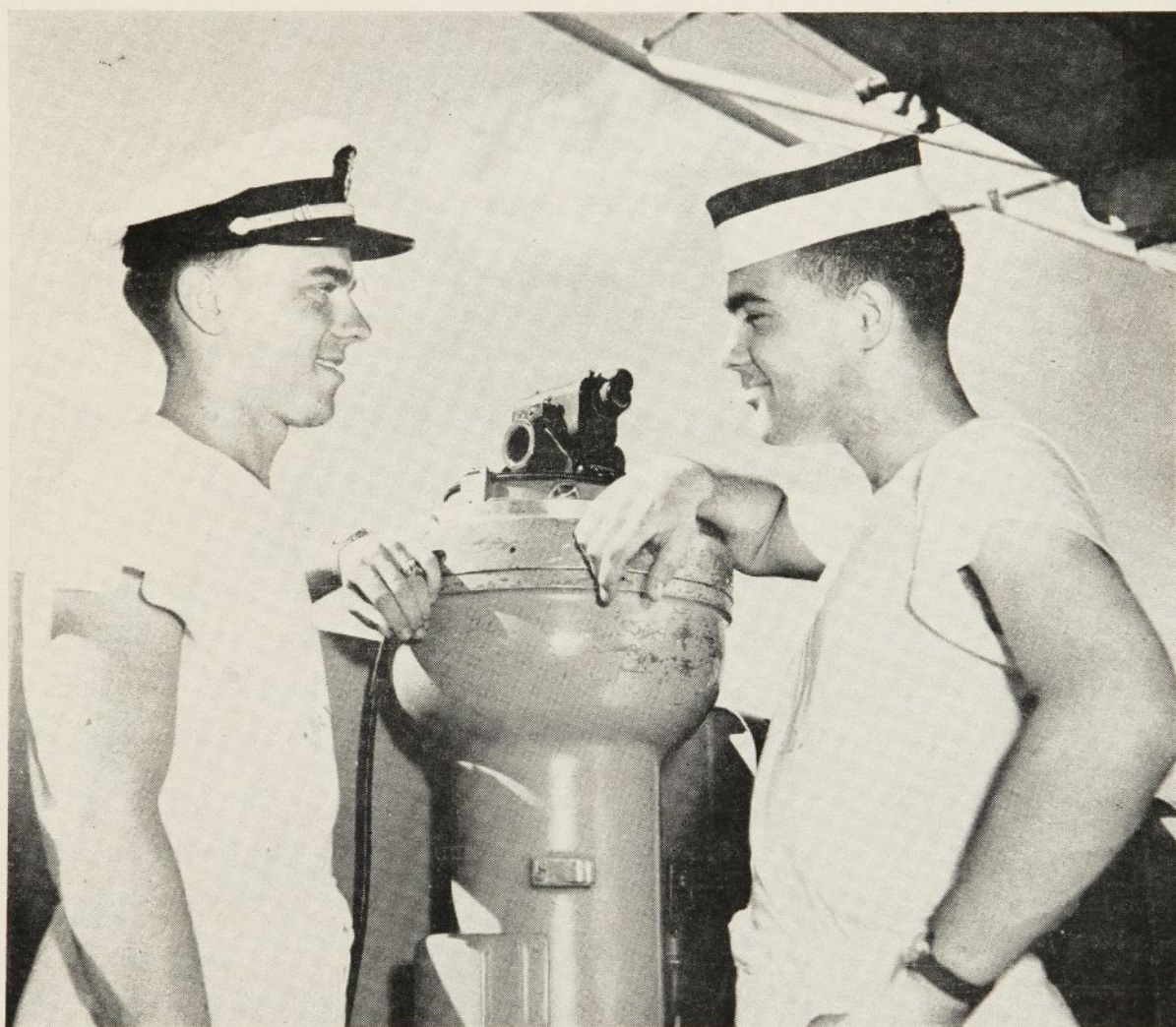




TORCH AND TREFOIL



Brothers On Training Cruise

(Story on page two)

**VOLUME 27, NUMBER 7
OCTOBER, 1952**

National Officers of Alpha Phi Omega

Prof. Daniel Den Uyl, West Lafayette, Ind.
National President
M. R. Disborough... Louisville, Kentucky
National First Vice President
Dr. Henry Miller... New York, New York
National Second Vice President
Joseph Scanlon... Yakima, Washington
National Third Vice President
Frank D. Wood... Atlanta, Georgia
National Treasurer
Sidney B. North... Kansas City, Missouri
National Secretary

National Executive Board

The Officers and

Prof. Harry C. Barnett... East Lansing, Mich.
Dr. H. Roe Bartle... Kansas City, Missouri
Dr. R. H. Bolyard... Lafayette, Louisiana
George F. Cahill... Milwaukee, Wisconsin
C. J. Carlson... Los Angeles, California
George H. Charno... Kansas City, Missouri
Irwin H. Gerst... Los Angeles, California
Dr. M. C. Hayes... DeKalb, Illinois
Arthur E. Jenner... Boston, Massachusetts
Dean Arno Nowotny... Austin, Texas
Harold F. Pote... New York, New York
William S. Roth... Chapel Hill, N. Carolina
Prof. Kent D. Shaffer... Pittsburgh, Pa.
Armand G. Spizzirri... Des Moines, Iowa
Prof. A. L. Thomas... Auburn, Alabama
Dr. Ray O. Wyland... Los Angeles, Calif.
Dr. A. C. Zumbunnen... Marshall, Missouri

"BOX SCORE"

Present number of chapters,
including petitions approved.... 258
Total number of members since
founding 38,046
Number of copies of this issue.... 14,000

Next in importance to freedom
and justice is education, without
which neither freedom nor jus-
tice can be maintained.

—President James A. Garfield.

TORCH and TREFOIL

October, 1952

Issued regularly eight times a year in
September, October, November, December,
February, March, April and May.
Subscription price \$1.00 a year

Entered as second class matter February 5,
1938, at the post office at Kansas City, Mo.,
under act of March 3, 1879. Office of pub-
lication, 419 Columbia Bank Bldg., Kansas
City, Missouri.

Coming

THE 1952 NATIONAL CONVENTION OF ALPHA PHI OMEGA

When: December 28, 29 and 30, 1952.

Where: Columbus, Ohio (Deshler-Wallick Hotel).

Purpose: Deliberation and fellowship among delegates and members from all parts of the United States. This meeting will provide a valuable exchange of ideas about service projects, methods, and the "know how" of chapter operation—and a real good time for all.

Who are Invited: Official delegates (two elected by each chapter to vote on all legislative matters). Active members and pledges. Faculty Advisors. Scouting Advisors. Alumni. Volunteer and Professional Scouters. College and University officials. Representatives of prospective new chapters.

Who Will Preside: Professor Daniel Den Uyl, National President, will direct the convention as general chairman and presiding officer.

Costs: Will be announced to all chapter officers and advisors in the National Bulletin.

Reservations: Each chapter will be asked to report to the national office its list of official delegates and additional members who will attend the convention.

This Fall's Slogan:

"Let's Meet in Columbus, December 28, 29 and 30."

IN MEMORIAM

Fred C. Bach

Scouting Advisor
Delta Zeta Chapter
University of Pennsylvania

Prof. Raymond Shannon

Faculty Advisor and Charter Member
Epsilon Omicron Chapter
Long Island University

Prof. Ralph Smith

Faculty Advisor
Delta Mu Chapter
Kansas State Teachers College

Thomas Lautazi

Active Member
Epsilon Omicron Chapter
Long Island University

Prof. Frank E. Dennie

Faculty Advisor
Beta Omicron Chapter
Missouri School of Mines

James Hall

Active Member and President
Theta Chi Chapter
George Washington University

ON OUR COVER

This past summer, many members of Alpha Phi Omega were on cruises with Naval ROTC, and others were in training camps of the Army, Air Force and Marine reserves. On our cover Midshipman first class Frank Nikischer of Alpha Beta Chapter at Penn State and Midshipman third class Ronald Scott of Beta Theta Chapter at University of Wisconsin, stand by the pelorus and chat about their training cruise. (Official U. S. Navy photograph.)

CHRISTMAS TOY DRIVE

By William G. Layton

President, Delta Lambda Chapter, Coe College

A casual suggestion made at one of the first meetings of Delta Lambda Chapter at Coe college in 1947 has blossomed into an annual chapter project which commands city-wide interest and support in Cedar Rapids, Iowa.

The suggestion was to instigate and carry out a Christmas toy repair drive for underprivileged children, and it rapidly developed into a campaign which now provides hundreds of "new" toys and hours of enjoyment for less fortunate children each Christmas.

The mechanics of the program are simple. Alpha Phi Omega, with the aid of several local civic groups, begins gathering broken and unpainted toys early in November. Door-to-door solicitation can be used, as well as various advertising mediums.

The toys are delivered to the local YMCA, where a workshop is provided. No elaborate set-up is needed—a few simple tools, box or two of nails, screws, nuts and bolts, and plenty of paint of all colors fills the bill quite adequately.

The boxes are sorted and the toys which are beyond repair are separated. Although the limited time and the large number of toys gathered prohibit extensive individual repair, the non-repairable toys can be used for spare parts.

Then APO members really roll up their sleeves! The paint begins flying and the hammers tapping — bicycles, tricycles, hobby horses, pull toys, chairs, tables, cars, boats, trains—all are rejuvenated. Members have found a majority of the toys only need paint, and a surprising volume of finished toys can be produced each hour.

And, best of all, it's fun! The old-fashioned APO group spirit makes the minutes fly by. Efficiency is promoted by assigning particular night for each member to work on the toys. But Delta Lambda Chapter has rarely found any difficulty getting its members on the job—men who have repaired in past

years are especially anxious to sign up again.

In 1951 the Young Men's Bureau of the Cedar Rapids Chamber of Commerce coordinated the drive, with APO furnishing the manpower. The project permitted closer contact with the YMB, and APO members found the relationship a stimulating one.

After repair, the toys are delivered to the Salvation Army, the Sunshine Mission and other needy organizations. The participants in the project get a big kick out of the repair itself, but the most gratifying part is seeing the children receive and enjoy the toys! Especially at that time the chapter members realize the true aims and purposes of Alpha Phi Omega.

Delta Lambda Chapter considers the toy drive one of its major projects of the year.

Other projects which Delta Lambda

chapter reports include distribution of Easter eggs at Children's Home, sending two boys to Scout camp last summer, conducting an Ugly Man contest, painting of campus bulletin boards, individual blood donating, helping with homecoming decorations, assistance in freshman orientation and registration, conducting a waste paper drive, ushering at Scout Court of Honor, and assisting in invitational speech tournament on the campus.

But of all of these and other activities carried out by the chapter, probably none gives the group more satisfaction than the Christmas toy drive. The smiles of satisfaction on the faces of less-chance children when they receive the toys is reward enough for the many hours of time and effort put into this annual service project.

We recommend that your chapter try it this coming Christmas.



In this picture are shown members of Delta Lambda Chapter of Coe College at work during the toy drive last Christmas. The skillful touch of the paint brush brought new color to used toys. The toys were then distributed through the Sunshine Mission. The photograph is by courtesy of Brother George Henry, Past President and now a Scouting Advisor of the chapter.

RED CROSS BLOOD DONING

America is mobilizing its resources again—this time it is lifesaving blood.

Four years ago the Red Cross inaugurated a community blood procurement and processing program to help meet civilian needs. Initial planning provided for expansion in time of natural disaster or war emergency. The Korean crisis proved the value of this planning. In the summer of 1950, the Red Cross was named as the official coordinating agency of the nation's blood resources for the military and civil defense. Within a week following the appeal for blood, the first shipment was on its way overseas for our combat wounded. Deliveries will continue as long as the need exists.

During the year 1951, more than two million Americans donated their blood in a greatly stepped-up program. By the end of 1952 twice that number are needed.

Donating blood takes about 50 minutes from your day, counting registration, brief physical check, time in donor room, and refreshments in the canteen. Any person in good health may give blood provided he is (1) between the ages of 18 and 59, inclusive (ages 18-21 need consent of parents), and (2) weighs approximately 110 pounds or more.

Giving blood is a very personal thing. It takes time and effort to go to the donor center. But needing blood is even more personal. It may mean life or death.

For your own protection and that of your neighbor, donate blood regularly. The need has never been more urgent than it is today.

How can an interested person or group give blood?

—by contacting the local Red Cross chapter for information on when and where. In a few communities, no facilities are available.

Why is a "quota" system used in scheduling donors?

—to avoid wasting a pint of precious blood. Whole blood remains fresh for only 21 days. This means the supply sent to hospitals is keyed to daily needs and must be replenished regularly. Moreover, the quantity sent to commercial laboratories

is determined by how many units of plasma the laboratories can process in any given day. Collecting too much is wasteful. Collecting too little is dangerous.

How does the Red Cross blood program operate?

—through regional and defense programs sponsored by local Red Cross chapters. Each program has a center where blood is collected and from which bloodmobile units make visits into neighboring communities to collect blood. All blood collected is processed in the center laboratory and then is distributed to civilian and military hospitals or sent to processing laboratories for the preparation of plasma and other derivatives. Red Cross is under contract to the Department of Defense to procure blood for military use overseas and for processing into dried plasma.

What is a regional center?

—a blood center established as an operating unit of the Red Cross blood program. Primary function is to provide blood for civilian use. Also collects blood for defense purposes.

A defense center?

—a blood center established by and operating under Red Cross administration for the sole purpose of collecting blood for defense purposes (for armed services overseas shipment or for processing into plasma for defense reserves).

A cooperating blood bank?

—a community blood bank supervised by the local medical society, licensed by the National Institutes of Health, and with whom a sub-contract has been negotiated by the Red Cross for the procurement of blood for defense purposes.

Services provided by the Red Cross blood program:

To the community—

Procures, processes and delivers whole blood as needed to physicians and hospitals in regions where community programs have

been authorized; provides blood derivatives for distribution through centers and state health departments.

To the Department of Defense—

Coordinates the collection of whole blood from all sources and controls its delivery for overseas shipment and to designated commercial laboratories for preparation of dried plasma.

Suggested Arrangements for a Campus Blood Drive Sponsored by Alpha Phi Omega

How to Get Started:

1. Special committee is appointed by chapter president (composed of active members and a faculty advisor).
2. Committee contacts local Red Cross chapter and college administration for approval, cooperation and support.
3. Functions of the committee:
 - a. Arrange with blood center or Red Cross field representative

(Continued on page 10)

ON OPPOSITE PAGE

In the upper left picture, brothers are shown taking registrations for blood drive conducted by Gamma Omega Chapter at University Heights, NYU. Left to right are Saul Mayer, Mel Tiger, Ronald Steiner and Sol Liebowitz.

In Eta Epsilon Chapter's blood drive at James Millikin University, two brothers are shown in the upper right picture. Brother John Corzine (rear) was chairman of the drive, and Brother George Churukian (front) was one of many students who volunteered and gave blood.

The picture in center left, sent in by Brother Bruce Wallace, shows the blood drive of Zeta Eta Chapter in progress at University of Chattanooga.

Once collected, the blood goes to a laboratory for testing and grouping. In right center, a Red Cross technician is testing blood from pilot tubes for determining blood group by slide technique.

In lower left, a shipment of blood assembled from several Red Cross centers is being loaded for transport by air to Korea.

On the battlefield, blood is carefully administered to the wounded and saves the lives of many.

BLOOD DRIVE IN PICTURES



EXTENSION IN ALPHA PHI OMEGA

By M. R. Disborough
National First Vice President

Extension—The word coming from the word "extend" in Webster's Dictionary means to enlarge or spread out. This is what Alpha Phi Omega is continuing to do as the years go on. We now number 258 chapters in the United States and day by day additional colleges and universities across the country see the worth and value of the service program of Alpha Phi Omega.

The program of extension in Alpha Phi Omega is in two parts: that of spreading our organization to other college campuses, and that of extending our membership to additional Scout-trained men in the present chapters. Each of these has a definite place in the program of the extension committee of your national organization.

Your extension committee is made up of Dean Arno Nowotny, Professor Kent D. Shaffer, Dr. Henry Miller, William S. Roth, C. J. Carlson, and M. R. Disborough, Chairman, all members of the National Executive Board. This committee is assisted all over the country by active chapters, by faculty and Scouting advisors, and by presidential representatives appointed by our National President.

During the past year, the following new active chapters have been established in Alpha Phi Omega:

Kappa Gamma Chapter, Wisconsin State College, LaCrosse, Wisconsin
Kappa Delta Chapter, Florida A & M College, Tallahassee, Florida
Kappa Epsilon Chapter, Wagner College, Staten Island, New York
Kappa Zeta Chapter, Southeastern State College, Durant, Oklahoma
Kappa Eta Chapter, Mississippi Southern College, Hattiesburg, Mississippi
Kappa Theta Chapter, Wake Forest College, Wake Forest, North Carolina
Kappa Iota Chapter, Hanover College, Hanover, Indiana
Kappa Kappa Chapter, New Mexico Western College, Silver City, New Mexico
Kappa Lambda Chapter, Southern University, Baton Rouge, Louisiana
Kappa Mu Chapter, Johns Hopkins University, Baltimore, Maryland



Kappa Nu Chapter, Grinnell College, Grinnell, Iowa
Kappa Xi Chapter, Xavier University, New Orleans, Louisiana
Kappa Omicron Chapter, University of Massachusetts, Amherst, Massachusetts
Kappa Pi Chapter, Wiley College, Marshall, Texas
Kappa Rho Chapter, Seattle University, Seattle, Washington
Kappa Sigma Chapter, Sacramento Junior and State Colleges, Sacramento, Calif.
Youngstown Area Alumni Chapter, Youngstown, Ohio
Omaha Area Alumni Chapter, Omaha, Neb.

According to our studies, there are hundreds of additional colleges and universities which are large enough to have active chapters of our organization. Any accredited college is eligible to establish a chapter. The minimum membership for starting a chapter is twenty-five students who have had previous Scout training, five faculty advisors and two Scouting advisors.

Do you have a Scouting friend who is attending another college which does not yet have an AΦΩ chapter?

Do you know an active member or faculty advisor of your chapter who has transferred to another college this Fall which does not yet have an AΦΩ chapter?

If your answer is yes to either of those questions, you are invited to write to our National Office to give the names and addresses of those whom you suggest be contacted about the customary steps for forming a chapter. In this way you have opportunity to personally assist in a real way in the expansion of our fraternity.

For extension within our present chapters, of course the Fall term is an important time for pledging, and reports indicate that pledging is going along at a brisk pace. Recruiting of additional men every semester is important to augment the chapter's membership. Whenever pledging is allowed to lapse for one or two terms, a chapter soon falters in its program. Our census cards are used to good advantage in the large majority of our chapters as a means of locating the students who have had previous Scout experience. Also, personal contacts are important as a means of enlarging the chapter membership.

Many chapters in past years have instigated new chapters on nearby campuses and have followed through with the organization and installation. This has resulted in a fine relationship between the chapters in those schools.

Friendship built up through the years between Alpha Phi Omega chapters can carry over into the entire campus life.

Our National Extension Committee wishes to assist in every possible way in spreading Alpha Phi Omega to additional campuses, and in enlarging our present chapters. If you find any way in which this committee may cooperate with your chapter, please send your request to our National Office.

ORDER OF THE ARROW CONFERENCE

By James Henkelman

President, Zeta Delta Chapter,
Miami University

Oxford, the home of Miami University, was a sleepy little town in Southern Ohio. Between Summer school and the Fall term is a dull time in a small college town, but it was a far different story when on August 28 from the potato patches of Maine and the hills of Kentucky, to the orange groves of California came about 2,500 Scouts of the Order of the Arrow. Busses from Texas carrying "Oxford or Bust" signs, and cars that must have been around when the Order was founded, descended upon the beautiful campus of Miami for the 37th Anniversary National Meeting of the Order of the Arrow.

Alpha Phi Omega had a definite place in the Conference. The host chapter, Zeta Delta of Miami University, was ready when the hordes invaded and did much of the behind the scene work to make things run smoothly. Brother Roy Henderson was chairman of the Arrangements Committee and did a tremendous job. AΦΩ had a welcome message printed on a map folder of Miami to greet the Arrowers. Guided tours of the campus were set up and an information booth along with a Lost-and-found department were run by brothers of Zeta Delta Chapter. A snack bar was arranged to handle the appetites of the Scouts, and recreational facilities were set up to help the boys let off steam. It was a big job, and the chapter was highly complimented by J. Richard Wilson, National Secretary of Order of the Arrow.

A booth containing Alpha Phi Omega materials was provided, and members on duty there distributed pamphlets and answered questions about the fraternity.

A large number of delegates who were planning to enter colleges and universities this fall filled out AΦΩ prospect cards indicating their interest in our fraternity. Those cards have since been mailed to the chapter presidents in the colleges where those men are enrolled.

The Conference had an excellent program, enjoyable and beneficial to all. Our National President, Professor Daniel Den Uyl, was one of the speakers at the final session.

It was heartwarming to see this large Order of the Arrow group gathered together in the spirit of service striving, as we are in AΦΩ, toward the principles of the Scout Oath and Law.

Alpha Phi Omega leaders chatting at the Order of the Arrow Conference are, left to right, William S. Roth, member of the National Executive Board; Dr. Glenn R. Barr, Chairman of the Advisory Committee of Zeta Delta Chapter; Prof. Daniel Den Uyl, National President; and Roy L. Henderson, Past President of Zeta Delta Chapter.



Some of the members of Alpha Phi Omega who were delegates at the Order of the Arrow Conference are shown in this picture. In the front row, left to right, are Frank V. Hermann (Delta Upsilon), Edward Zalesky (Delta Upsilon), Ralph C. Diddle, Dick C. Davidson (Gamma Psi), Allyn S. Norton (Rho), Fred De Los Reyes (Philippines), Jay H. Brown, Jr. (Gamma Phi), William Edwards (Carleton College preparatory group), and Roy Lee Henderson, Jr. (Zeta Delta).

Second row, left to right: G. Jay Heim (Epsilon Epsilon), Don L. Kinert (Alpha Alpha), Leo G. Sheets (Epsilon Epsilon), Dick A. Mack (Epsilon Epsilon), Marty Koesterer (Rochester preparatory group), Francis J. Kafka (Beta Iota), Bob E. Kravetz (Iota Theta), Everett L. Laning (Eta Beta), Bob F. Warner (Delta Theta), Daniel Den Uyl (National President), and James H. Henkelman (Zeta Delta).

Back row, left to right: L. J. Klein (Delta Theta), E. Gene Hinds (Kappa Iota), Bill L. Griffin (Tau), John Paul Raycob (Kappa Mu), Martin Stern (Gamma Delta), Don R. Brown (Beta Beta), Bob Giordanengo (Epsilon Psi), Warren C. Gutermuth (Delta Theta), Don Buchanan (Mu), Bill S. Roth (National Board), and George G. Schwenk (Alpha Chi).

Several other APO members who were delegates at the conference could not be present at the time this picture was taken.



Highest Ugly Man Total

Congratulations to BETA BETA CHAPTER of *Michigan State College* upon securing \$1,693.51 in its Ugly Man Contest last Spring! The drive extended two days and the final evening, and the proceeds were given to the Campus Chest. This is the highest total ever reported to our National Office by any chapter in an Ugly Man Contest.

Sell Freshman Caps

At the opening of the Fall term, GAMMA KAPPA CHAPTER handled the sales of Freshman caps at *Texas Christian University*. This job was done for the Student Congress and the Chairman of Howdy Week (the first week of the semester to welcome new students). The advance supply of 400 was a sell-out, and about 100 more were ordered. The chapter also furnished help in the Registrar's office two days during the registration of new students. This is reported by Glyn Spearman, President.

Bindex

ETA ALPHA CHAPTER has distributed more than 1,000 copies of its current bindex to students of *University of Santa Clara* this Fall. The bindex, which is a set of dividers for class materials, has proved to be a great service to the students and is in great demand. This is reported by Adolph J. Capurro, President.

Trophy for Outstanding Junior

One of the newest projects of DELTA KAPPA CHAPTER is a trophy given to the outstanding junior on the *Emory University* campus. It is awarded on the basis of scholarship, activities and service to the school. This is reported by Dick Grossman, President.

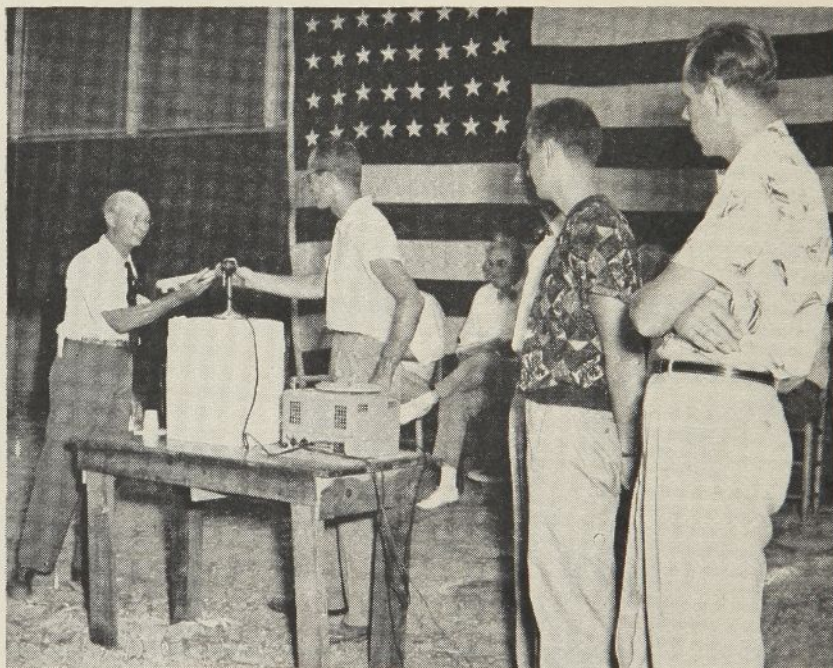
Loan Fund

At the *University of Houston*, DELTA OMEGA CHAPTER has increased its loan fund to help needy students meet emergency expenses, and has been highly praised for this service by Mr. B. R. Hooper, Assistant Director of Loans and Scholarships.

Assist Book Drive

When the *Millikin Religious Association* put on a book drive for students in India, ETA EPSILON CHAPTER contributed thirty dollars to help defray mailing expense. This is reported by Rjurik Golubjatnikov, Corresponding Secretary.

FUNDS DONATED FOR CAMP HOSPITAL



Beta Psi Chapter of Southeast Missouri State College in Cape Girardeau recently completed a big Good Turn for their younger brother Scouts. Camp Lewallen, near Silva, Missouri, was in great need for a new hospital, which presented a challenge to the Chapter; and an Ugly Man Contest was conducted in which \$1,160.00 was raised toward the building fund. Since this amount represented the major portion of the cost of the hospital, the building was dedicated on July 12 "to the Future of Alpha Phi Omega."

Dr. W. W. Parker, President of the Southeast Missouri State College, gave the dedicatory address. In his remarks Dr. Parker recognized the Alpha Phi Omega Chapter as one of the outstanding organizations on the campus. Many other complimentary remarks were made in his address indicating appreciation and recognition for the Chapter's enthusiastic participation in worthwhile projects.

Shown in the above picture, the key to the hospital was presented to D. L. Fisher (left), Council Camping Chairman, by Jack Scott, President of Beta Psi Chapter. Other chapter members, council and college officials look on. The ceremonies took place at Camp Lewallen in front of the new hospital.

Aid Foreign Students

Off to a great start this year, one of ALPHA PHI CHAPTER'S early Fall projects was assistance to about 150 students from other countries who registered at *Washington University* in St. Louis. The chapter aided them in going through the registration procedure. Other projects will include the annual Ugly Man Contest, barber shop quartet sing, AΦΩ card party, Easter egg hunt. For the first time this year the chapter will sponsor a leadership training course for volunteer Scout Leaders to be held on the campus on two Saturday afternoons. This is reported by Bill Port, Vice President.

Distribute Football Booklets

At *St. Olaf College*, IOTA TAU CHAPTER has distributed "How to Watch Football" booklets furnished by the Phillips Petroleum Company. Other early Fall projects include inviting Scouts from neighboring towns to attend a football game and painting the scoreboard. This is reported by Daniel F. Rigau, Vice President.

Planning Convention Delegation

News from our Mother Chapter, ALPHA of *Lafayette College*, brings word that the chapter hopes to send a large delegation to the National Convention in December. Projects are off to a good start this fall, with plans under way for a blood drive on campus, starting an emergency first aid squad, a swimming meet for Scouts and maintenance of a portion of the Appalachian Trail. This is reported by Douglas M. Harris, President.

Installation of Student Government Officers

At *Mercer University*, DELTA IOTA CHAPTER assists each year in the installation of new student government officers. The chapter has helped make this a traditional and impressive ceremony on the campus. The chapter recently conducted an inspection of thirty-seven Cub Packs and Scout Troops for the Central Georgia Council, operates the coke machines in two men's dormitories, serves as guides to visiting groups, and provides magazines for those confined in the infirmary. This is reported by Bill Wilson, President.

SCOUT VISITATION DAY AT UNIVERSITY OF NEBRASKA



Explorer Scouts were guests of Alpha Phi Omega on a visitation day conducted by Alpha Sigma Chapter last May 10. They toured the university museum and several of the engineering college buildings, and had a swim in the university pool. They ate lunch in the Student Union and heard talks by several administrative officials. A student from Poland told of Boy Scouts' activities in his country during the war. The remainder of the afternoon was devoted to watching football movies and touring the military and athletic departments of the university. The above picture shows Bob Davis, past president of the chapter, with a group of Explorers leaving the coliseum. The Scouts enjoyed the day immensely, and the chapter plans to make this an annual event. In every phase of the program, the fullest cooperation was received from faculty and administration. This is reported by Gordon Kruse, president.



By Joseph Scanlon

1. Who is eligible to wear an Alpha Phi Omega pin or key?
2. Where is the insignia secured?
3. Does the national office sell pins and keys?
4. What kind of order blank is used?
5. What is necessary to secure prompt delivery of a pin or key?
6. Is each pin made to individual order?
7. Has there been an increase in price of Alpha Phi Omega insignia?

ANSWERS ON PAGE 11



RED CROSS BLOOD DRIVE

(Continued from page 4)

- for date, place, equipment and supplies, and for all technical details.
- b. Plan and spearhead the drive.
- c. Appoint and supervise working committees outlined below.
- d. Evaluate and report results to student body, college administration, and Red Cross chapter.

What You Need to Carry Through:

1. Publicity and Education Committee.
 - a. Secure cooperation of public relations office and journalism department.
 - b. Arrange for campus newspaper and radio coverage.
 - c. Secure and distribute audio-visual and printed materials.
 - d. Arrange for bulletin board displays.
 - e. Arrange for convocation program, provide student speakers.
 - f. Contact instructors in health, science, social science, etc., to insure class coverage.
2. Recruitment Committee
 - a. Secure cooperation of campus groups and organizations, including student government, Interfraternity and Panhellenic councils, men and women independents, departmental clubs, etc.
 - b. Arrange for personal contacts among students, faculty, and administrative and custodial staffs.
 - c. Provide, distribute and collect pledge cards.
 - d. Schedule the donors.
 - e. Provide telephone appointment coverage and follow up.
3. Arrangements Committee
 - a. Assist in setting up campus blood center.
 - b. Provide for canteen (home economics department or college food service may cooperate).
 - c. Provide for necessary volunteer workers (from the $\Lambda\Phi\Omega$ chapter) to assist the Red Cross staff.

CAMPUS EDITORIAL

APO SPONSORS UGLY MAN CONTEST

Today the first of the candidates for the second annual "Most Ugly Man on Campus" election appears in *The Daily Iowan*.

From every outward aspect this contest seems silly and juvenile compared to other SUI elections.

However, in view of the ultimate goal of the sponsors of the election—Alpha Phi Omega, national service fraternity—we endorse this contest as one of the most important.

APO originated the MUMOC election here last year. They set up jars for ballot boxes and urged the student body to "stuff 'em."

Each "vote" is one penny. In other words, if you want to boost your favorite "Ugly Man" you can drop in a nickel, dime, or whatever you want.

After the winner is announced at the annual all-campus carnival, which is being held this Saturday, the proceeds from the election go into the APO service fund.

The service fraternity uses these funds to buy things for cheering up those in the School for Handicapped Children and for operating a Cub Scout patrol.

In addition to these APO activities, this group runs the Lost and Found. Clothes and books which at the end of the year are unclaimed are donated to the Salvation Army and the YMCA European book drive.

APO recently handled the voting in the first Miss SUI contest, in cooperation with the Hawkeye yearbook staff and several other campus groups.

Another APO idea was that of sending copies of *The Daily Iowan* to students in the infirmary.

Besides these activities, APO runs information tours for freshmen during orientation week.

The local chapter is composed of 70 men—all of them pledged to friendship, fellowship and service.

These SUI men give their time and energy and frequently are called upon to furnish money and transportation in order to achieve their goal—service to campus and community.

We know that every candidate for "Most Ugly Man on Campus" will receive more "votes" when people consider that each "vote" they cast is for a worthy cause.

Keep it up, APO!

This editorial which appeared in The Daily Iowan, campus newspaper of the University of Iowa, is a splendid tribute to the work of Omicron Chapter of Alpha Phi Omega.

"Get Out the Vote" Campaign

THETA LAMBDA CHAPTER at *The Rice Institute* is helping the local Scout Office distribute liberty bells to Scoutmasters in connection with the "Get Out the Vote" drive. The chapter will also distribute good turn bags to the Scoutmasters for the

clothes drive. The group is selling cushions at football games to bolster the chapter treasury and will act as guides and caretakers for a weekend opening of a museum on the campus. This is reported by Frank Caldwell, President.

Excellent Start

Brother John H. Grossman, Treasurer, reports that ZETA KAPPA CHAPTER is off to an excellent start this Fall at *Bowling Green State University*. The chapter helped on registration, gave a Freshmen Stag, and conducted its used book store which had a turnover of over \$3,000.00 within the first two weeks of this term.

The APOplexy

Under the chairmanship of Brother George Schwenk, ALPHA CHI CHAPTER has recently published the first issue of its newsletter for this new school year. The name of the paper is "The APOplexy."

Inspection of Restaurants

In collaboration with university and health officials, ALPHA OMICRON CHAPTER is planning to conduct inspections of restaurants near the campus of *Southern Methodist University*. Other projects being carried out include compilation of a Student Directory, the traditional Christmas tree, Ugly Man Contest, aid in preparations for Homecoming, ushering at convocations, maintaining an information center, and giving several days' work at a camp for underprivileged children being developed by the Lions Club. The chapter took a Scout census of all incoming men during orientation week and is now conducting its pledge program. This is reported by Henry Yeager, President.

Book Exchanges

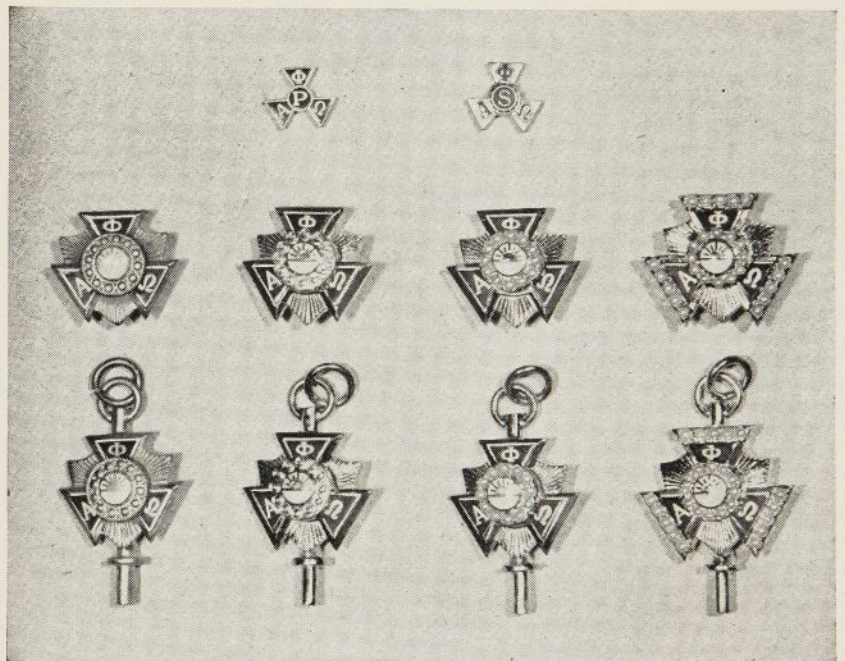
GAMMA DELTA CHAPTER's book exchange at CCNY is again operating effectively this Fall, with one change for the better. Money for books sold for students is being paid to them immediately instead of waiting until all sales are complete, thus eliminating an additional week of paying and record-keeping. This is reported by Lawrence Lazovick, Corresponding Secretary.

ZETA CHAPTER started the book exchange at *Stanford University* last winter, and handled it in a very efficient manner. The chapter was highly praised by the students and administration for this service. This is reported by Tony Money, Past President.

Answers to APO Quiz For October

1. Every active member, advisor, honorary member and alumnus of Alpha Phi Omega is eligible to purchase and wear a pin or key.
2. Our insignia is manufactured and distributed by the L. G. Balfour Company of Attleboro, Massachusetts, the world's largest manufacturer of fraternity jewelry.
3. No. Our national office does not sell pins and keys. Each pin and key is secured direct from the factory on individual order. (Pledge buttons and recognition buttons are distributed by our national office as a convenience to chapters, but pins and keys are not stocked at the office).
4. Jewelry order forms are available from our national office upon request.
5. There are three things to remember to help secure prompt delivery of insignia. First, be sure the member who is to receive the pin is registered in the national office. Each order is checked to be sure the individual is entitled to receive it. Second, fill out the order blank carefully, indicating distinctly the kind and price of pin you desire. Third, mail the copies of the order according to instructions shown on each sheet.
6. A stock of insignia is maintained by the L. G. Balfour Company, but after an order is received, the pin is engraved on the back with the member's initials, chapter name and date of initiation, providing this information is furnished in the order.
7. There has been no increase in price of our insignia during the years of rising prices. Only the Federal tax has been added.

INSIGNIA OF ALPHA PHI OMEGA



Pledge button (shown above at top left).....	.35
Service button (top right).....	.35
Standard badge, gold plated (extreme left, middle row).....	2.50
Standard badge, 10K (second from left, middle row).....	6.50
Standard badge, crown set pearl center plain arms (third from left, middle row).....	13.25
Standard badge, crown set pearl center and arms (extreme right, middle row).....	24.50
Standard key, gold plated (extreme left, bottom row).....	3.25
Standard key, 10K (second from left, bottom row).....	8.50
Standard key, crown set pearl center plain arms (third from left, bottom row).....	15.00
Standard key, crown set pearl center and arms (extreme right, bottom row).....	26.00
(To all prices add 20 per cent federal tax, and state sales tax.)	

Official order blanks are available from your Chapter Treasurer or from the National Office.

BULLETIN BOARD

THANKSGIVING SERVICE

As the Thanksgiving season approaches, there are especially fine opportunities to render unselfish service. Fostering the Thanksgiving spirit among the entire student body, assisting a group of orphans or hospitalized children, giving baskets of food to needy families—these are ways we may show our thankfulness for the many blessings which we have enjoyed during the past year.

The sending of CARE packages is an excellent means of aiding unfortunate persons in other nations.

Truly, the Thanksgiving season typifies the ideals of Scouting, with a spirit of reverence and helpfulness.

BROTHERS IN ARMED FORCES

Members of AΦΩ who are serving in the armed forces welcome every contact with home, and this includes keeping in touch with Alpha Phi Omega. Does your chapter have a regular plan of contacts with your fellow-members who are in the armed forces?

A chapter newsletter is an ideal means of sending information to those who are away.

We should keep those members informed regularly of AΦΩ activities while they are in the service of our nation. Let's all assist in this vital phase of fraternity fellowship.

ELECTIONS

November is election month in Alpha Phi Omega in accordance with the semi-annual schedule set forth in the National Constitution. The new term extends until April. Officers may be re-elected once if so desired by the chapter.

In most chapters a nominating committee is used, with additional opportunity for nominations from the floor. The qualifications are important. Consider all nominees carefully.

It is recommended that a Training Conference be conducted by the Chairman of the Advisory Committee to aid the new officers in becoming acquainted with their jobs.

NATIONAL BIRTHDAY

December 16, 1952, will mark the twenty-seventh anniversary of the founding of Alpha Phi Omega. The week of December 10 to 16 is designated as Anniversary Week. This anniversary provides occasion for a chapter commemoration.

Features of this celebration may well include a chapter banquet, historical review, initiation ceremony, outline of plans for the future, musical entertainment and a top-notch speaker.

The celebration of the national birthday is traditional in most chapters and is a high spot in each year's program.