



Torch and Trefoil



OCTOBER
1956

TORCH and TREFOIL

Volume 31, Number 6

October, 1956

Issued regularly eight times a year, monthly
October through May.

Subscription price \$1.00 a year

Entered as second class matter February 5,
1938, at the post office at Kansas City, Mo.,
under act of March 3, 1879. Office of publica-
tion, 419 Columbia Bank Bldg., Kansas City,
Missouri.

Printed by

Smith-Grievens Company, Printers & Lithographers
Kansas City, Missouri

Honorary Officers

K. K. Bechtel San Francisco, California
Honorary National President

John M. Schiff New York, New York
Honorary National Vice President

National Officers of
Alpha Phi Omega

M. R. Disborough Louisville, Kentucky
National President

William S. Roth Raleigh, North Carolina
National First Vice President

Irwin H. Gerst Hawthorne, California
National Second Vice President

E. Ross Forman Philadelphia, Pennsylvania
National Third Vice President

Joseph Scanlon Yakima, Washington
National Treasurer

George H. Charno Kansas City, Missouri
National Legal Counselor

A. G. Spizzirri Kansas City, Missouri
National Editor

Sidney B. North Kansas City, Missouri
National Executive Secretary

Past National Presidents

Frank R. Horton Bangor, Pennsylvania

Dr. H. Roe Bartle Kansas City, Missouri

Dean Arno Nowotny Austin, Texas

Prof. Daniel Den Uyl West Lafayette, Ind.

National Executive Board

The Officers, Past National Presidents,
and

Manfred O. Awe Minneapolis, Minn.

Prof. Harry C. Barnett East Lansing, Mich.

Dr. Glenn R. Barr Oxford, Ohio

Dr. R. H. Bolyard Lafayette, Louisiana

R. J. Bradshaw, Jr. Chattanooga, Tenn.

Joseph A. Brunton, Jr. New Brunswick, N. J.

George F. Cahill Brooklyn, N. Y.

C. J. Carlson Riverside, California

Benjamin F. Fay Philadelphia, Pa.

Dr. Robert G. Gordon Los Angeles, Calif.

Robert J. Hilliard Kent, Ohio

Dr. Lawrence L. Hirsch Chicago, Ill.

Stephen J. Horvath DeKalb, Ill.

Dean Lewis N. Jones Lubbock, Texas

Stanley Livingston Ruleville, Mississippi

Thornton M. Long Ocala, Florida

Dr. Henry Miller Huntington Station, N. Y.

Rev. Robert J. Payne Cos Cob, Conn.

Dr. H. F. Pote Scarsdale, N. Y.

Prof. Kent D. Shaffer Pittsburgh, Pa.

James W. Thomas Arcadia, California

Dr. Ray O. Wyland Tujunga, California

National Publications Committee

A. G. Spizzirri, *Chairman*

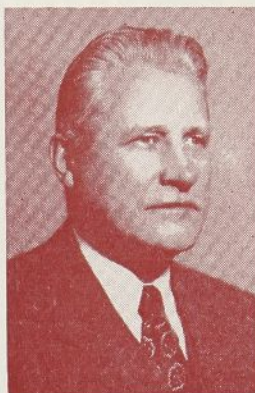
Rev. Robert J. Payne

Stephen J. Horvath

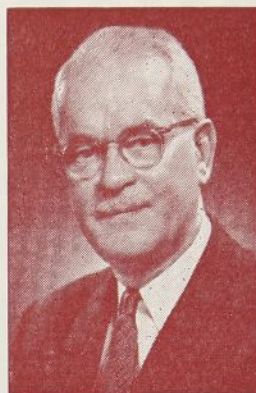
Roy F. Pleis

Robert R. Weber

Of Thee I Sing



Dr. Ray O. Wyland



C. J. Carlson

At our recent National Convention, two members who have devoted many years of service in Alpha Phi Omega were awarded the National Distinguished Service Key. They are Dr. Ray O. Wyland, Alpha; and C. J. Carlson, Chi. Brother Wyland has been a prominent leader in Alpha Phi Omega since the founding of the first chapter at Lafayette College in 1925. Brother Carlson has been active in instigating

and installing new chapters and has devoted much time in the promotion of our fraternity for many years. The two awards were the first of their kind ever given. Citations concerning the achievements were read at the convention banquet. The TORCH and TREFOIL joins in extending hearty congratulations to these two distinguished brothers.

ON OUR COVER

Presented on this month's cover is the portrait of General Carlos P. Romulo, Philippines statesman, in whose honor our nation-wide 1956 Fall Pledge Class is dedicated. See opposite page.

NEW LIFE MEMBERS

Twenty-nine more brothers have subscribed for Life Membership in Alpha Phi Omega since the previous list was published. We welcome:

Ernest Edward Emig, *Iota Pi*

Phillip Sherwood Paul, Jr., *Alpha Rho*

Karl Sturge, *Alpha Pi*

J. Hugh Wise, *Beta Mu*

Robert Bader Bunting, *Eta Phi*

Robert F. Wessling, *Beta Beta*

Wendell F. Finch, *Kappa Rho*

David Leroy Peters, *Alpha Tau*

Edward Stephen Simmons, *Zeta Upsilon*

Howard Martin Grube, *Lambda Chi*

James Hays Evans, *Beta Eta*

Kenneth Ernest Kline, *Delta Sigma*

Alan G. Levin, *Iota Kappa*

Monty Mann, Jr., *Delta Beta*

John C. Pender, *Eta*

Dr. Harold F. Pote, *Eta Beta*

Charles A. Rusk, *Alpha Beta*

Eugene Ralph Schoetker, *Alpha Phi*

Stanley Evan Schwartz, *Alpha Phi*

William Frederick Settles, *Eta*

Joe Paul Tupin, *Alpha Rho*

Charles M. Merrill, *Alpha Rho*

Paul C. Walgren, *Iota Psi*

William Gary Martin, *Alpha Zeta*

Charles C. Cronk, *Zeta Theta*

Herbert George Horton, *Alpha*

Robert A. Shimer, *Zeta Delta*

Jean B. Bucher, *Theta Delta*

Franklin E. Powell, *Phi*

IN MEMORIAM

Richard Farrand

Active Member, Gamma Psi Chapter
University of Minnesota

Prof. Richard S. Grossley

Faculty Advisor, Epsilon Omicron Chapter
Long Island University

Both of these brothers were deeply interested in Alpha Phi Omega, one serving as an active member and the other as an advisor. Their passing is a real loss to our fraternity.

THE CARLOS P. ROMULO CLASS OF NEW MEMBERS OF ALPHA PHI OMEGA

This Fall, as in previous years, Alpha Phi Omega points with pride to an outstanding citizen and confers upon him the distinction of dedicating the nationwide Fall Pledge Class in his honor. Selected this year is General Carlos P. Romulo, Philippines statesman.

General Romulo has long been a leader in the cause of world peace and is an ardent Scouter. In "Who's Who in America" he is described as an author, editor, lecturer, soldier, diplomat. He was born in Manila, P. I., in 1899 and took his bachelor's work at the University of the Philippines and Master's at Columbia University. He has received honorary doctors degrees from numerous universities in the United States and abroad.

He has served with distinction in the Philippine Army and the United States Army and was twice cited by General Douglas MacArthur. While serving in World War II he was advanced to the rank of Brigadier General and was awarded the Purple Heart, Gold Cross, Silver Star and Oak Leaf Cluster and Distinguished Service Star. He is a wearer of the Philippine Army fourragere for four citations to his unit for conspicuous gallantry in action.

General Romulo is permanent delegate of the Republic of the Philippines to the United Nations and was President of the U N General Assembly in 1949. He was a member of the Philippine Independence Mission to the United States.

Early in his career General Romulo was a professor of English at the University of the Philippines and later became a member of the Board of Regents of the University. He is a member of Sigma Delta Chi, Tau Kappa Alpha and Phi Kappa Phi.

General Romulo is a member of the Manila Rotary Club and was Vice-President of Rotary International 1938 to 1940. He is author of many books and articles, including "Changing Tides in the Far East" (1928), "My Brother Americans" (1945), "See the

Philippines Rise" (1946), and numerous others.

In Scouting, Carlos Romulo has long been active and has served as Vice-President of the National Council of the Philippines Boy Scouts. He is a distinguished speaker and has done much in promoting friendship among nations. He has an outstanding record of service to fellowmen.

Alpha Phi Omega is proud to name its 1956 Fall Pledge Class as "The Carlos P. Romulo Class" with all of the honor and distinction which comes with this dedication.

All new active members and advisors initiated in Alpha Phi Omega for the Fall semester will be included in this dedicatory class. This may include pledges carried over from previous terms as well as new men pledged

this Fall. The registrations for this class will end February 15, 1957.

A special prepared book containing the names of all initiates in this class will be presented to General Romulo. Each chapter is challenged to pledge and initiate the largest number of new members in its history for this Fall class.

A Scroll

A parchment sheet will be sent to each chapter on which the members of the Romulo Class will have the privilege of signing their names. Then after those are assembled from the chapters they will be bound with an appropriate inscription for presentation to General Romulo. Plan now for an impressive initiation ceremony for your pledges in "The Carlos P. Romulo Class."

Greetings to All Men of Alpha Phi Omega:

I count it a real privilege to have your 1956 Fall Pledge Class named "The Carlos P. Romulo Class." This is an honor which I deeply appreciate.

For a long time it has been my pleasure to be an active Scouter and I believe wholeheartedly in the principles and program of the worldwide Scout Movement. It is significant that Alpha Phi Omega carries on the ideal of the Scout Good Turn during college life.

Heartly congratulations upon the fraternity's program of "Be a Leader, Be a Friend, Be of Service." I hope you will live by this slogan not only during your college years but throughout your lifetime. This is the spirit which is needed to maintain peace and good will among all peoples everywhere.

I am delighted that Alpha Phi Omega has become established in my homeland—The Philippines—as well as in the United States. Let us hope that as the years pass this fraternity will find channels of service in all Scouting nations around the globe.

My best wishes go with all members, advisors and pledges of Alpha Phi Omega for finest success in your chapter activities.



October 1, 1956

A Feature Project . . .

FOR THE CARE OF OTHERS

Another family has just arrived at the Refugee Reception Camp of Uelzen in West Germany. The father was a teacher in the East Zone, but he would not knuckle under the regimentation of the political regime. Arrest as "enemy of the state" stared him in the face. He fled with his wife and two little boys.

Surrounded by the pitifully few belongings they were able to carry with them on their flight, the new family sits in the cubicle that is assigned to them. Their eyes are wide with apprehension. The future looks grim. It will be several months before the investigation is concluded and the family is given permanent asylum in the Bonn Republic. And then?

They are handed a CARE Welcome Kit. Its contents are not much in dollars and cents—just a bar of soap for each of them, a tube of toothpaste, a

toothbrush, a towel, shaving cream for father, and a little sewing kit for mother, to make the most necessary repairs on the clothes that suffered greatly during the flight. In far-away America, someone has donated the price of a Welcome Kit to the CARE Campaign for Refugees. To the family at Uelzen the very fact that the kit is a gift from someone entirely unknown to them gives it an added value. It is a token to them that they have not been forgotten by the rest of the free world. It bolsters their sense of human dignity. It proves to them that their flight to freedom has not been in vain.

Still, their troubles are by no means over when finally they receive permission to settle permanently in West Germany. Is there a job open for a homeless teacher somewhere? Hopes again drop to their lowest point; then

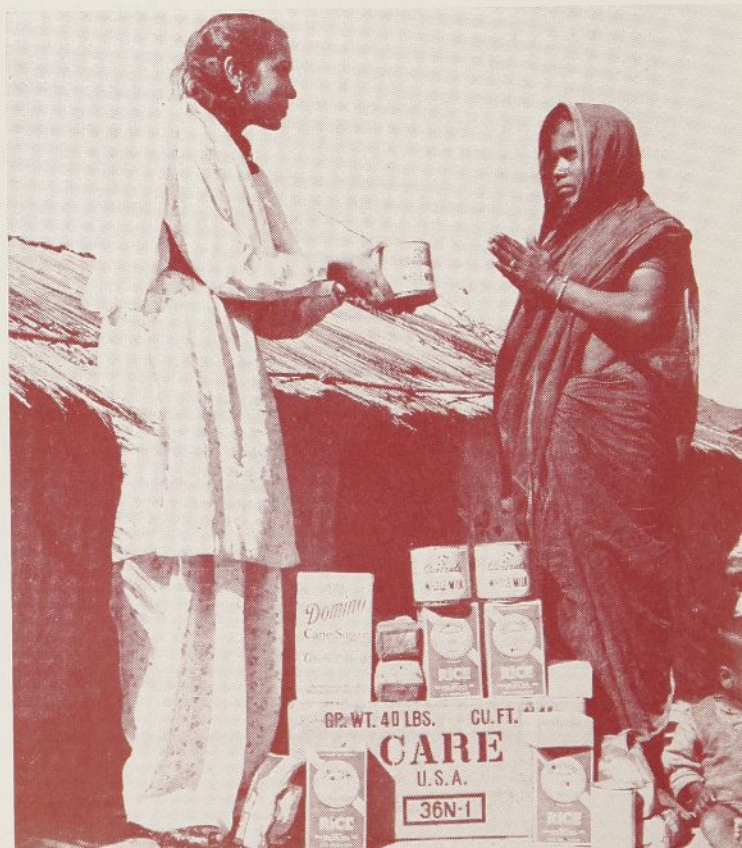
another CARE gift reaches them. This time it is a Food Crusade package, containing 22 pounds of powdered milk, cheese, rice and beans. It provides enough to help feed the family for a month. It also carries with it the hope and courage these people need to go on.

The story could be repeated many thousandfold—among the two million refugees who have crowded into Hong Kong during the past eight years; among several hundred thousand expellees and DPs in Italy and Greece; among a million Arab refugees in Jordan, Syria, Lebanon and the Gaza Strip.

Yet it is not merely the refugees that the CARE Food Crusade is aiding. In many a case the timely arrival of a Food Crusade package has meant the difference between utter despair

(Continued on page nine)

In the picture at left, below, is shown an aged Chinese grandmother in Hong Kong, one of the tens of thousands of Red China refugees who have received CARE Food Crusade packages to help sustain them. At right are shown victims of the recent severe earthquake in the Kutch region of northwest India receiving a CARE package. Aid from CARE'S mission stockpile in that area was among the first to reach the stricken people.



Leadership Feature . . .



Illustration by
Del Jay Kinney (Upsilon)

Look around! Prospective locations for new chapters are everywhere. Do you have a Scouting friend on another campus who could help start a new chapter of Alpha Phi Omega? Here is an outline about

HOW TO ORGANIZE A NEW CHAPTER

Chapters of Alpha Phi Omega may be established in accredited four-year colleges and universities in the United States (subject to the college regulations governing student organizations). The preparatory work for the organization of a new chapter is done by a group of students who take the initiative to form a local service club composed of former Scouts.

The following steps are recommended for the use of students, faculty men and Scouters who are interested in forming a new chapter:

Determine the eligibility of the school to secure an Alpha Phi Omega charter. Only accredited colleges and universities may affiliate.

Read thoroughly the Question and Answer pamphlet and Pledge Manual. These publications set forth the facts about the activities and policies of the organization.

Seek the approval and cooperation of the Dean of Men of the college and the local Scout Executive. Show them copies of the Question and Answer pamphlet and Pledge

Manual as a basis for their consideration of Alpha Phi Omega.

Conduct a census of the men on the campus to locate those who are eligible and interested. This is done by means of Campus Scout Census cards furnished by the National Office. Whatever quantity of cards is needed will be sent upon your request.

Call a meeting of those who have expressed interest and eligibility to discuss how Alpha Phi Omega would fit into the campus life of your college. Discuss the information provided in the Question and Answer pamphlet, and review the service projects listed on pages 7 to 10 of the pamphlet. (When you desire to arrange this meeting, a quantity of the information pamphlet will be sent for general distribution to those who attend.)

Elect temporary officers, particularly a President and Secretary.

Effort should be made to include in the group men from

(Continued on next page)

HOW TO ORGANIZE A NEW CHAPTER

(Continued from page five)

all social fraternities and a similar number of independents, and men from all departments of the college.

Select one or two projects which the group wishes to launch immediately, and assign all interested men to various responsibilities in connection with those projects.

Select Faculty and Scouting Advisors to cooperate in campus and community activities.

Request the necessary application forms from the National Office.

Make arrangements for a suitable meeting room on the campus.

Regular meetings should be held weekly or bi-weekly.

The Requirements

The following are the requirements for securing an Alpha Phi Omega charter:

Twenty-five or more undergraduate students, who have been previously affiliated with Scouting, established in an active local service club.

Five or more faculty advisors and two or more Scouting advisors, including the Scout Executive and one volunteer Scouter.

A suitable program of activities during the preparatory period and an outline of the objectives of the new organization for its first year.

The above outline is the procedure recommended by our National Extension Chairman, Dr. Lawrence L. Hirsch, for establishing a new chapter. If you know someone on another campus who may be interested, clip out the outline and send it to him. Or if you would prefer to obtain a mimeographed copy for this purpose, please request it by writing to Alpha Phi Omega, 419 Columbia Bank Building, Kansas City 6, Missouri.

ON STAFF AT PHILMONT

Fourteen men of Alpha Phi Omega served on the staff of Philmont Scout Ranch this past summer and we are pleased to present this picture of them. Seated left to right are Tom Brown, Lambda Lambda Chapter, Shippensburg Teachers; Jack Filley, pledge of Kappa Eta Chapter, Mississippi Southern; George Worley, Beta Zeta Chapter, University of Georgia; Jack L. Rhea, Director of Camping at Philmont, Beta Alpha Chapter, University of Wichita; Charles J. Schlappkohl, Rho Chapter, University of North Carolina; Art Mueller, Epsilon Epsilon Chapter, Missouri Valley College; and Jerry Plessner, Epsilon Epsilon Chapter, Missouri Valley College.

Standing left to right are Ernest Coons, Gamma Eta Chapter, Springfield College; Robert Ruane, Gamma Eta Chapter, Springfield College; Dennis Prindiville, Eta Psi Chapter, Chico State College; Ray Sadler, Epsilon Iota Chapter, Mississippi State College; Richard Fluck, Zeta Nu Chapter, Southern Illinois University; Eric Hines, Alpha Tau Chapter, Butler University; and Max White, pledge of Beta Eta Chapter, Missouri University.

These brothers served in various capacities at Philmont throughout the Summer. This news and pictures are by courtesy of Jerry Plessner.



Charter fee of \$25.00.

Individual initiation fees of \$12.00 each for the student members. (There is no charge for advisory membership.)

Letter of approval from the College.

Letter of approval from the local Scout Council.

The Petition

The forms for petitioning include an Application for Charter and individual membership applications in duplicate. Each man in the preparatory group should sign two copies of the Application for Charter, one for the National Office and the other for local historical records. Likewise, each man should fill out two copies of the individual application, the blue copy for chapter use and the white copy for the National Office. Students use the active membership form, and there is a separate form for use by the faculty and Scouting advisors.

When the petition is received in the National Office, the information concerning it is transmitted to all chapters and Executive Board members for approval.

Installation

After the approval of the petition, a date is set at the convenience of the petitioning group for the installation ceremony. The ceremony is conducted by a member of the National Executive Board with assistance of a visiting degree team from a nearby chapter.

Aid to Freshmen

Members of IOTA OMICRON CHAPTER returned to Gettysburg early this Fall to assist the faculty in conducting Orientation Week for the freshmen. ΑΦΩ members directed freshmen to their rooms and provided tours around campus. They also ushered at chapel services and proctored orientation tests throughout the first week of the term. Another early Fall project of the chapter was work in connection with Fathers' Day. This is reported by Rush Barr, Corresponding Secretary.

New Chapter Room

Yale University has recently given DELTA NU CHAPTER a suitable room for its meetings and for its office. The chapter is very much pleased with its quarters, reports J. Alexander Onderdonk, President.

Chapter Newsletter

The first Fall issue of "Chapter Chatter" of GAMMA XI CHAPTER at Rockhurst College was published in September under the editorship of Joseph M. Joyce and Joseph Waldinger. The newsletter appears regularly throughout the school year.

A STORY OF THE FOURTEENTH NATIONAL CONVENTION OF ALPHA PHI OMEGA

"We had a swell time and brought back many good ideas to improve the chapter program." Numerous similar comments have been received since the Fourteenth National Convention of Alpha Phi Omega. Those expressions indicate the fine success of this meeting held in Long Beach, California, August 28 to 30, 1956. All who had the privilege of attending participated in an excellent program and those who for some reason could not attend missed a big occasion.

A wonderful spirit of achievement prevailed. A real sense of accomplishment was felt by the delegates because of the outstanding service program being conducted by AΦΩ throughout the nation, and a spirit of fraternal fellowship was in evidence.

More than 300 members from all parts of the United States took this opportunity to get together, get acquainted and to discuss the several phases of Alpha Phi Omega's program. A great majority of them traveled hundreds, and even thousands, of miles to join in this fine convention.

Brother M. R. Disborough, National President, presided ably and was given a big ovation by the delegates for his leadership and devotion as president for the past two years.

Serving as Program Chairman was Brother A. G. Spizzirri. Through his advance planning the convention schedule included fun, inspiration and a lot of real values to take back to the chapters, and he kept the program rolling in a fine way throughout the meeting.

Brother Irwin H. Gerst did an excellent job as Arrangements Chairman. He and the host committees comprising delegates from all California chapters planned the facilities and arrangements necessary for this convention. Comprising the host committees were Alpha Kappa, Epsilon Chi, Chi, Kappa Sigma, Gamma Gamma, Iota Pi, Gamma Beta, Lambda Mu and the Los Angeles alumni. They

did meritorious work including the many services such as registration, reception, exhibits, supplies, luncheon and banquet arrangements, entertainment, sergeant-at-arms and publicity, and had a great part in making the convention so successful.

Brother Robert J. Payne served for the sixth time as Convention Secretary and his work is deeply appreciated by all.



M. R. Disborough

*Re-elected as National President
by unanimous vote of convention delegates*

The official report of the Fourteenth National Convention will appear in a later issue of TORCH AND TREFOIL, but here we would like to mention just a few of the many highlights.

Reports of the National Officers were significant at the opening session, giving a record of the past two year's accomplishments and offering a basis for continued growth. Reports were given by A. G. Spizzirri, National Editor; Joseph Scanlon, National Treasurer; E. Ross Forman, National Third Vice President; Irwin H. Gerst, National Second Vice Presi-

dent; William S. Roth, substituting for George F. Cahill, National First Vice President; Sidney B. North, National Secretary; and M. R. Disborough, National President.

The Fellowship Luncheon was dedicated in honor of Dr. Ray O. Wyland, one of the original founders of Alpha Phi Omega, who has continued actively in leadership in our fraternity for more than thirty years.

The keynote address was by Dr. Robert G. Gordon, Dean of Men of the University of Southern California, who is an honorary member of Alpha Kappa Chapter. His fine address was enthusiastically received by all and truly put the convention into high gear. One of his principal points was that "Service is an attitude, not just an activity."

Nineteen training groups and discussion groups met and gave thorough consideration to the many phases of AΦΩ activities and procedures. The training group topics included The Chapter Executive Committee, Service Committee Operation, Rushing, Duties of the Treasurer, Planning a Sectional Conference, The Secretary's Job, Conducting an Impressive Ritual, Planning Chapter Meetings, and The Advisory Committee.

The discussion group subjects were Service Projects, Membership, Pledge Training, Alumni Relations, Money Raising Projects for Charity, Money Raising for the Chapter, Chapter Traditions, Relation with Campus Administration and Advisors, Publicity and Public Relations, and Maintaining Fellowship and Spirit in the Chapter. All of these groups were well attended and we know that much good resulted from them.

The four legislative committees worked diligently during long hours at the convention and each brought its recommendations to the entire assembly for consideration and voting by the delegates. The committees in-

(Continued on page ten)



Week-End Retreat

At the opening of this semester, ALPHA RHO CHAPTER at the *University of Texas* held a week-end retreat for chapter officers and advisors. It was a very successful event for planning this year's activities. Last year, Alpha Rho Chapter conducted numerous major projects including an Ugly Man contest which brought in a net of over \$4,250.00 for the Campus Chest, handling all campus elections, assisting in the registration of more than 18,000 students, active cooperation with the local Boy Scout Council, conducting the Southwest Sectional Conference, and other activities. This is reported by Donald W. Young.

Sponsors Mixer

EPSILON PSI CHAPTER at *Kent State University* sponsored the first of a series of all-university mixers as a send-off for their football team for the first game of the season. At intermission the members of the football team were introduced. This is reported in "The Daily Kent-Stater."

Book Exchange

An early Fall project of EPSILON ZETA CHAPTER at *Rensselaer Polytechnic Institute* was the operation of the Book Exchange. Brother Barry Hyman, Corresponding Secretary, reports that it was very successful.

Promotional Folders

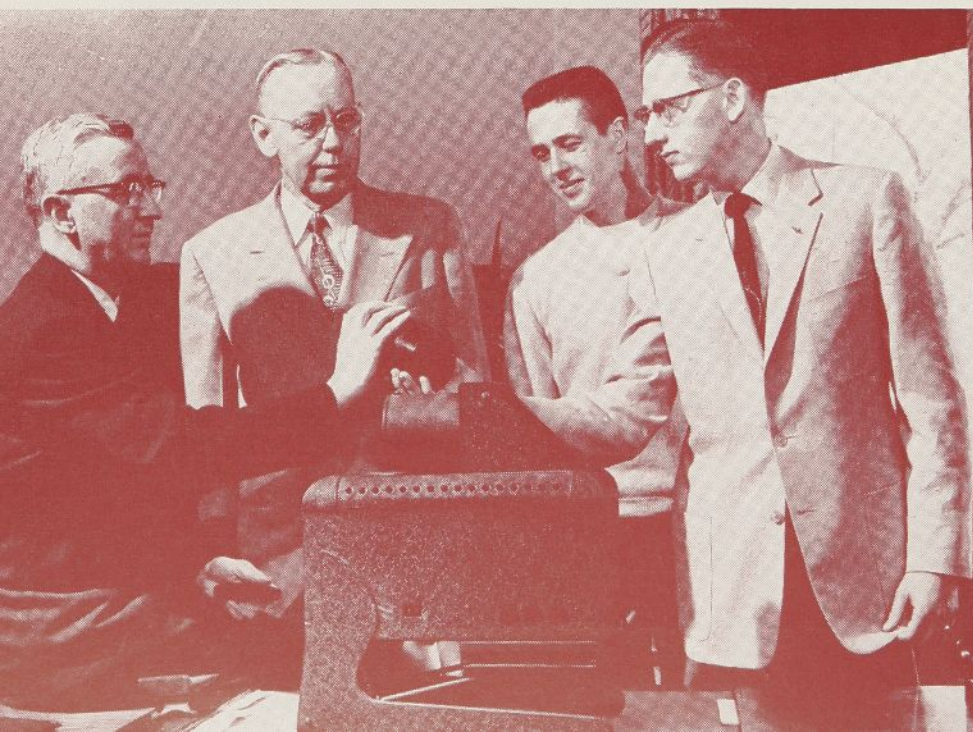
GAMMA PI CHAPTER at the *University of Michigan* prepared a printed folder in the Summer to be used in publicizing Alpha Phi Omega among incoming freshmen this Fall. It is an attractive four-page folder with pictures and it has proved to be very effective, reports Richard Bloss, Corresponding Secretary.

Another special folder this Fall is by IOTA CHI CHAPTER at *Northern Michigan College* including information about chapter projects and also data about the national scope of ΑΦΩ. It has been highly useful in informing freshmen about our fraternity, reports Tom Nyquist, Recording Secretary.

PROJECTOR DONATED TO SCOUT COUNCIL

Eta Epsilon Chapter at Millikin University recently presented the opaque projector, shown above, to the Lincoln Trails Council, Boy Scouts of America. The amount of \$200.00 necessary for the purchase was raised through various projects of the chapter. The projector is for training purposes.

Shown in the picture are, left to right, Harold R. Irish, Council President; Dean C. L. Miller, Acting President of Millikin University; Eugene Degner, then President of Eta Epsilon Chapter; and James Stevenson, Projects Chairman. The picture is by courtesy of the Decatur Herald and Review and this news is from Clyde M. Clark, Presidential Representative, and Tom Kelly, Scouting Advisor.



Leadership

This past Summer I directed Camp Wilderness of the Chicago Council, Boy Scouts of America. I had a very enjoyable time working with Scouts and Scouters. One of the most important reasons for the successful camping season which we had was the large number of ΑΦΩ members on our staff.—Stephen Horvath, National Executive Board.

Victory Lights

An electrical system to flood the Ezekiel Cullen Building at the *University of Houston* with red victory lights has been approved by the university administration. DELTA OMEGA CHAPTER brought forth the idea and the lights will be installed as soon as the necessary equipment arrives. In an editorial concerning the facets of university life, appearing in "The Cougar," student newspaper, a prominent paragraph is devoted to service on the campus and the name of Alpha Phi Omega appears therein as an activity which the editors recommend. The statement is a fine tribute to the program of ΑΦΩ on the Houston campus.

CARE

(Continued from page four)

and new hope also for an old couple striving to get along on a pitifully small old-age pension. Or perhaps for an unemployed worker, disabled by war wounds or tuberculosis. Or for a widow with a brood of growing children.

Many of these refugees, aged, invalids, orphans, flood and other disaster victims and similarly needy people in 19 overseas countries are being aided by the CARE Food Crusade. Plans for the Food Crusade call for the distribution by the non-profit overseas aid agency of a total of 5,000,000 special packages.

The food itself has been made available to CARE from national farm surplus by the U. S. Department of Agriculture. CARE is appealing to the American people to participate in the Food Crusade on a "people-to-people" basis by contributing a dollar per package, to cover the cost of packaging and distribution in each of the recipient countries.

In addition to especially needy families, such institutions as orphanages, hospitals, child-feeding centers, old-age homes, refugee camps, etc., will be included in the Food Crusade in Israel, Pakistan, India, Korea, Vietnam and Hong Kong. In each case distribution will be on the basis of need alone and under the strict supervision of the CARE Mission Chief for each country, working in cooperation with official and private welfare organizations.

Though each CARE Food Crusade package will carry with it the name and address of the donor to identify it as a gift from the American people, no specific recipient may be named by the donor. In cases of Food Crusade donations of \$100 or more, the individual donor or contributing group may choose a specific category as recipients, such as "Iron Curtain refugees in West Germany," "escapee students at Hong Kong University," or "flood victims in Italy."

For many years, numerous chapters of Alpha Phi Omega have contributed to CARE, donating money raised through the Ugly Man Contest or other sources. This is a very worthy service which deserves your chapter's consideration. Donations in any amount may be forwarded through any local CARE office or directly to CARE, 660 First Avenue, New York 16, N. Y.

ORGANIZATIONS NIGHT AT EMPORIA STATE



An information table of Epsilon Alpha Chapter is shown here with four members busy on their shift at this booth set up in the Student Union Building at Kansas State Teachers College, Emporia. Left to right are Gary McMillian, prospective pledge; Clyde Goulden, Kenney Bell, Bob Roehrman and Bob Chatham. This table was operated during freshman orientation week this Fall and is an excellent means of giving information about Alpha Phi Omega to freshmen and other prospective new pledges. This is a fine example of one good way to present the story of APO to new men each term, and, of course, an effective follow-up is important, inviting eligible men to attend open meetings to learn more about our program.

PUBLICITY FOR CHRISTMAS SEAL DRIVE

Robert Bunting, Past President of Eta Phi Chapter at American University, is interviewed by Lynn Hart, popular director of the "Ladies Home Theatre" afternoon program on WMAL-TV, Washington, D. C., as part of last year's publicity in the chapter's Christmas Seal drive. Members of Eta Phi Chapter manned the seal sale booth at the Apex Theatre. All proceeds of the sales went to the Tuberculosis Association. For many years, numerous chapters of Alpha Phi Omega have assisted in Christmas Seal sales in their respective vicinities. Now is the time to plan for this year's sale to take place just before Christmas and thus give further assistance in the fight against tuberculosis.



CONVENTION STORY

(Continued from page seven)

cluded the Constitution and By-Laws Committee, Nominating Committee, Time and Place Committee and Appreciations Committee.

At the first evening session Brother E. Ross Forman, National Third Vice President, presided. The evening address was given by Dr. Howard McDonald, President of Los Angeles State College. He emphasized the principles of Alpha Phi Omega as viewed by a college president. The National President's Fireside Chat conducted by President Disborough was very informative and it gave opportunity for delegates who desired to ask questions about the operation of the fraternity both locally and nationally. The evening program was rounded out by a skit and coffee bar.

To open the activities the second morning of the convention, sectional meetings were held to give opportunity for delegates from various parts of the nation to get together to discuss plans for the next sectional conference and plans for the further promotion of AΦΩ in their areas.

Presiding at the morning session was Brother Irwin H. Gerst, National Second Vice President, and the first order of business was the presentation of bids for the site for the 1958 National Convention. Delegates from Austin, Texas, and Minneapolis, Minnesota, presented bids, those being the two cities from which advance invitations had been received. The voting on these took place in the final session of the convention.

Chairman Gerst called upon four speakers. These included greetings

from the Order of the Arrow by Harry M. Thomas; a comprehensive talk on "Professional Service in the Boy Scouts of America" by Ben Conger, Assistant Director of Professional Training Service; a fine statement on "The Responsibilities of the Advisory Committee" by Prof. R. L. Brittain, Chairman of the Advisory Committee of Beta Zeta Chapter, University of Georgia; and an enthusiastic presentation on "The Importance of Public Relations" by Fred Johnson, President of the Southern California Chapter of the Public Relations Society of America. All of these addresses were valuable to the delegates.

A real high spot at this convention was the colorful banquet. This was held in the Pageant Room of the Wilton Hotel. The group was enthusiastic, with much singing and fine fellowship. Splendid greetings from "Alpha Phi Omega of the Philippines" were expressed by Juan V. Javier, Jr. He emphasized the opportunities to spread international goodwill in our fraternity activities.

The attendance award was presented by Brother Herbert G. Horton, one of the original founders of Alpha Chapter at Lafayette College. Receiving the award was the delegation from Alpha Rho Chapter, University of Texas, numbering twenty-two delegates, who had traveled a total of more than 30,800 man-miles one-way to attend this convention.

Under the supervision of Brother William S. Roth, a member of our National Executive Board, two national distinguished service keys were presented, with citations being read by Brother Robert J. Hilliard. These awards were to Brother C. J. Carlson

who was characterized as "Mr. Leadership" and to Dr. Ray O. Wyland who was characterized as "Mr. Service." The keys were the first of their kind ever given and were presented to these two brothers in recognition of their long devotion to Alpha Phi Omega.

A beautiful Certificate of Appreciation was presented by Brother Harry C. Barnett, member of the National Executive Board, to Mrs. M. R. Disborough (received in her absence by her husband) a tribute to her loyal assistance and cooperation to our National President.

The banquet address was by the new President of the National Council, Boy Scouts of America, Kenneth K. Bechtel. He stressed how the principles of the Scout Oath and Law fit into the business world today, and his sincere and straightforward message was deeply appreciated by the delegates and guests.

Legislation

The convention enacted several changes in the National Constitution and By-Laws. The official wording will appear in the next printing of the Constitution, but presented here is a summary of the legislation adopted.

In Article III, Section 2 of the National By-Laws, the first paragraph was changed to read, "There shall be a national initiation fee of \$12.00 paid by each new active member. Of this amount, \$4.00 shall be known as a pledge fee. The remaining \$8.00 shall be known as the active initiation fee." (Note: This change constitutes an increase of the national fee of Alpha Phi Omega from \$10.00 to \$12.00. There had been no previous increase



SERVICE RECORD CHART

Iota Chi Chapter at Northern Michigan College has recently prepared a Service Record Chart. The idea was instigated by Gary Small, President, believing that there was need for a more accurate record concerning hours of service performed by the members and pledges. Adam Marvar was appointed as service record chairman with duties of distributing project cards to the various committees and recording all hours of services performed by the members.

Shown here, the Service Record Chart displays at a glance the total man-hours performed by the chapter, the total man-hours spent on each project, and also the total man-hours devoted by each individual member.

Any chapter desiring further information about the Service Record Chart may obtain it by writing to Gary Small, 514 West Kaye Avenue, Marquette, Michigan.

in our fee in more than fifteen years, and, of course, during the intervening time costs of everything it takes to operate the national fraternity had risen sharply. It was necessary to enact an increase in the fee if the present services to the chapters were to be continued.)

Article VI, Section 3 of the National Constitution was changed to read, "The National Finance Committee shall be composed of the National Treasurer and at least two other members of the fraternity appointed by the National President."

Article VII, Section 3 of the National Constitution was changed to read, "It shall be the duty of the National Finance Committee to recommend means of adequately supporting the fraternity and recommend suitable expenditures through an annual budget and written report."

A new section was added to the National Constitution to read, "Life Membership fees and other funds not specified for operational purposes shall be deposited in a National Alpha Phi Omega Endowment Fund to be administered by an elected board of six trustees. Said trustees shall serve for a period of six years (except that of those elected in 1956, two shall serve for a two-year period, two for a four-year period, and two for a six-year period). The National President shall serve as an ex-officio trustee."

Another change voted is that the title of National Secretary was changed to National Executive Secretary in all places where it appears in the National Constitution and By-Laws.

Resolution

The delegates adopted the following resolution: "Alpha Phi Omega, National Service Fraternity, assembled in National Convention, herewith resolves that it disapproves the consumption or possession of alcoholic beverages by its members at any official activity or function of a collegiate chapter. The fraternity chapters shall be constrained to observe the spirit, custom and letter of the regulations promulgated by the local school authority in every case."

Next Convention in Austin, Texas

By vote of the delegates the Fifteenth National Convention of Alpha Phi Omega will be held in Austin, Texas, the last week of August, 1958.

As soon as the exact dates are decided upon, announcement will be sent to all chapters.

New Officers

Brother M. R. Disborough was unanimously re-elected as National President and he enthusiastically continues in his leadership to build our fraternity to new heights during his administration. The elected officers as chosen by the delegates at the 1956 National Convention are:

National President—M. R. Disborough, Louisville, Kentucky

National First Vice-President—William S. Roth, Raleigh, North Carolina

National Second Vice-President—Irwin H. Gerst, Hawthorne, California

National Third Vice-President—E. Ross Forman, Philadelphia, Pennsylvania

National Treasurer — Joseph Scanlon, Yakima, Washington

Past National Presidents who by constitutional provision have a lifetime membership on the National Executive Board are:

Frank R. Horton, Bangor, Pennsylvania

Dr. H. Roe Bartle, Kansas City, Missouri

Dean Arno Nowotny, Austin, Texas

Prof. Daniel Den Uyl, West Lafayette, Indiana

New members elected to the National Executive Board to fill expirations and other vacancies are:

George F. Cahill, Brooklyn, New York

Dr. Robert G. Gordon, Los Angeles, California

Robert J. Hilliard, Kent, Ohio

Dean Lewis N. Jones, Lubbock, Texas

Thornton M. Long, Ocala, Florida

Members of the Board who were re-elected at this convention are:

Prof. Harry C. Barnett, East Lansing, Michigan

Dr. Lawrence L. Hirsch, Chicago, Illinois

Rev. Robert J. Payne, Cos Cob, Connecticut

Dr. Ray O. Wyland, Tujunga, California

Board members previously elected whose terms continue are:

Manfred O. Aws, Minneapolis, Minnesota

Dr. Glenn R. Barr, Oxford, Ohio

Dr. R. H. Bolyard, Lafayette, Louisiana

Robert J. Bradshaw, Jr., Chattanooga, Tennessee

Joseph A. Brunton, Jr., New Brunswick, New Jersey

C. J. Carlson, Riverside, California

Benjamin F. Fay, Philadelphia, Pennsylvania

Stephen J. Horvath, Chicago, Illinois

Stanley Livingston, Ruleville, Mississippi

Dr. Henry Miller, Huntington Station, New York

Dr. Harold F. Pote, Scarsdale, New York

Prof. Kent D. Shaffer, Pittsburgh, Pennsylvania

James W. Thomas, Arcadia, California

Reappointments made by President Disborough include A. G. Spizzirri, National Editor; George H. Charno, National Legal Counselor; and Sidney

B. North, National Executive Secretary.

The convention was concluded by a challenging address by The Honorable W. Turney Fox, Justice of the Superior Court, State of California. He emphasized that the ideals and principles of Alpha Phi Omega are needed in all walks of life and he urged the delegates to continue building APO strongly on their respective campuses.

Presiding at the installation of national officers and board members was Brother C. J. Carlson. He urged these leaders to give their very best service in Alpha Phi Omega throughout their term of office and he admonished the delegates of all chapters to give loyal cooperation to the officers and board members in the advancement of our fraternity.

This Fourteenth National Convention brought inspiration, knowledge and stimulation for further action and progress in our nation-wide program of Leadership, Friendship and Service.

Do You Wear an Alpha Phi Omega Pin or Key?



If you have not yet purchased a pin or key, get one as soon as convenient. You will enjoy wearing APO insignia. Above is pictured the standard pearl center key which costs \$16.25, plus ten per cent federal tax and any state and city tax which applies in your locality. Other qualities of pins and keys are priced from \$2.75 to \$28.00.

An illustrated list is available upon request to our National Office. Also, if your chapter treasurer does not have Balfour order blanks on hand, a supply can be obtained by writing to our office.

"Talk Up" Alpha Phi Omega

HERE ARE WAYS YOU CAN PUBLICIZE THE ACTIVITIES OF YOUR CHAPTER

Invite friends and classmates who have been Cub Scouts, Boy Scouts or Explorers to attend open meetings of your chapter, and then follow up by inviting them to become pledges.

Ask professors and administrative officials for suggestions for new service projects. Let them know of your chapter's desire to render increased service to the campus.

Inform social fraternities and dormitory groups about AΦΩ's program and invite their co-operation on major projects.

Discuss with your local Scout officials ways in which Alpha Phi Omega may cooperate in the council program and in other community activities.

Tell Scouts in your home town about AΦΩ so they will be looking forward to becoming members when they enter college.

Furnish news items to the college and city newspapers and radio and television stations for publicity concerning meetings, projects and special events.

Wear your Alpha Phi Omega insignia. The recognition button and pin or key are indication to your fellow students that you are actively participating in this service program.

Yes, "talk up" Alpha Phi Omega at every opportunity. In this way you can put extra spark and value into your chapter program this Fall.

BULLETIN BOARD

YOUR MAGAZINE

The purpose of TORCH AND TREFOIL is to inform the members of Alpha Phi Omega concerning chapter activities and national activities. Information from your chapter is solicited and encouraged. Look at each department in the magazine and if you have an item, send it to our National Office.

Pictures are particularly desired. Secure pictures whenever you can, showing members and pledges in action on service work, and send them for publication. They offer the best means of telling other chapters about your activities.

MAILING LIST

Careful effort is being made to insure delivering each issue of the TORCH AND TREFOIL to the correct address of all members and advisors. Our National Office has asked each chapter to send a current roster of names and addresses of men who have enrolled for the Fall term, to enable the correction of the mailing stencils. Your helpfulness in this regard will be much appreciated.

Also, new lists of officers, when elected, should be promptly reported to the office to enable us to maintain correct mailing list for the National Bulletin.