



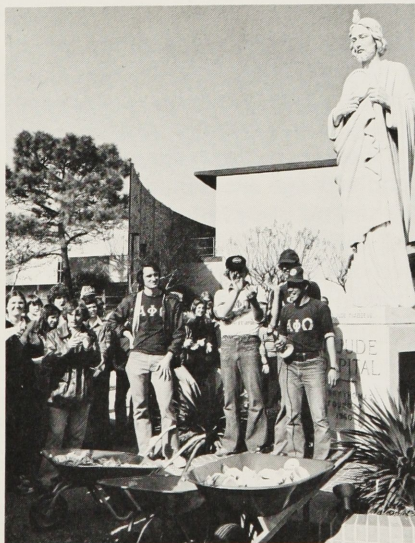
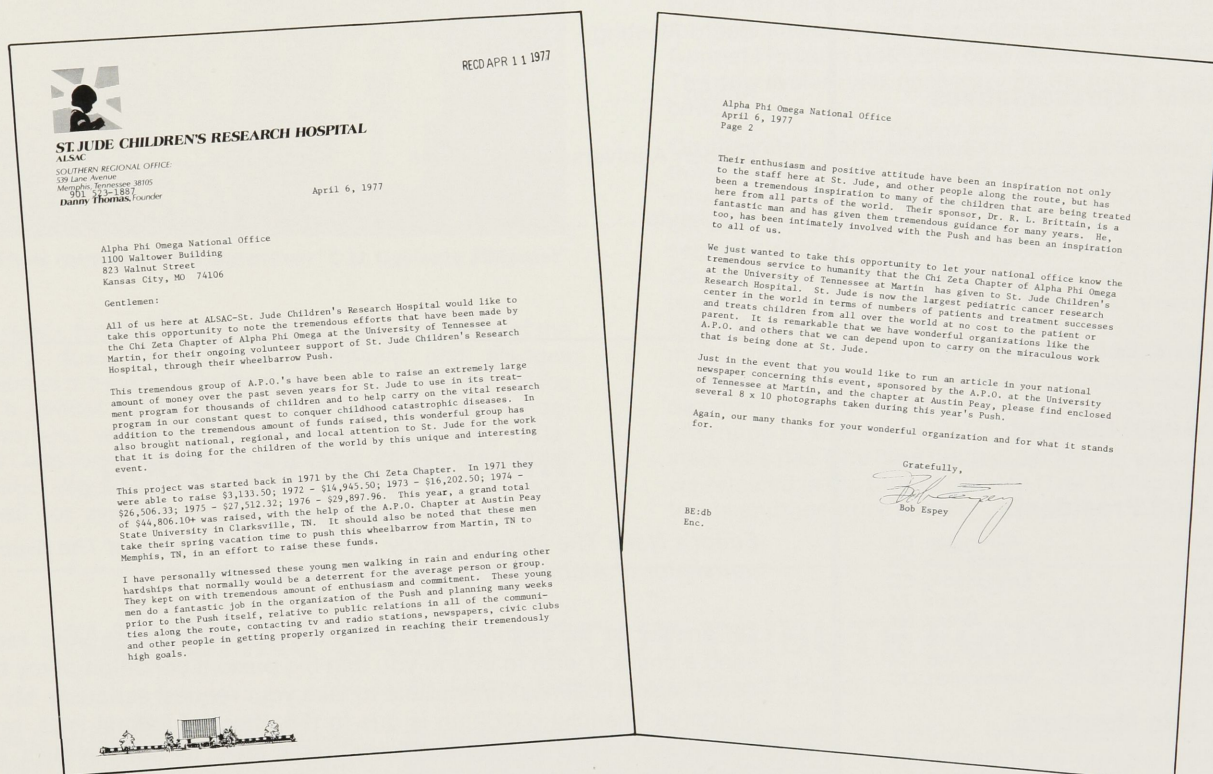
torch and trefoil



SPRING 1977

PUSH FOR ST. JUDE

Editor's note. The following letter and photos were received from Bob Espey of St. Jude Research Hospital in Memphis, Tennessee. We believe the letter tells the story of an outstanding project which is a part of our National Service Program. We want to share this with you.



**Alpha Phi Omega
National Service Fraternity**

**Volume 52, No. 4
Spring, 1977**

National Officers

Lawrence L. Hirsch, M.D. Chicago, IL
National President
Lorin A. Jurvis Washington, DC
National Vice President

Executive Committeemen

Ed M. Andrews Martinsville, IN
Dr. John E. Hanke Cheney, WA
Clark Israel Columbia, MO
Sid Smith San Carlos, CA
Dr. C. P. Zlatkovich Austin, TX

Regional Representatives

I. Lewis Finkel New York, NY
II. Warren C. Weidman Reading, PA
III. Robert J. Harris Raleigh, NC
IV. Stan Carpenter Atlanta, GA
V. William B. Rugh Toledo, OH
VI. Berkeley P. Duncan Ann Arbor, MI
VII. Abe Frishman Garland, TX
VIII. Darrell Spoon Wellington, KS
IX. Michael W. Suhr Minneapolis, MN
X. Earle M. Herbert Los Angeles, CA

National Executive Director

Roger A. Sherwood Kansas City, MO

Legal Counsel

Alex M. Lewandowski Kansas City, MO

Past Presidents

M. R. Disborough Wilmington, DE
E. Ross Forman Philadelphia, PA
Tom T. Galt, M.D. Spartanburg, SC
Dean Arno Nowotny Austin, TX
Dr. Glen T. Nygreen Bronx, NY
William S. Roth Danville, PA
Dr. Lester R. Steig Palo Alto, CA
Lucius E. Young, LTC, Ret Washington, DC

Life Members

George F. Cahill Pittsburgh, PA
Irwin H. Gerst Palos Verdes Peninsula, CA
Sidney B. North Lee's Summit, MO
Dr. Harold F. Pote LaJolla, CA
Joseph Scanlon Kansas City, MO
A. G. Spizzirri Louisville, KY

Ex-Officio Members

Arch Monson San Francisco, CA
Harvey L. Price North Brunswick, NJ

Ex-Officio Life Members

Lewis B. Blair Cheverly, MD
Ellsworth S. Dobson Collbran, CO
Herbert Heinrich Honolulu, HI
Donald L. Terwilliger Deal Park, NJ
William T. Wood Delray Beach, FL

TORCH AND TREFOIL is issued regularly four times a year, September, November, February and April, from Office of Publication, 1100 Waltower Building, 823 Walnut Street, Kansas City, Missouri 64106. Printed by Rosse Lithographing Company, Printers and Lithographers, Kansas City, Missouri. Second Class Postage paid at Kansas City, Missouri. Subscription price \$1.50 per year.

CONTENTS

Push for St. Jude	1
The Wolf at the Door	2
CU Cycles to Stillwater	3
National Eagle Scout Tribute Fountain	3
Installations	4
Brothers on the Move	4
Convention Board Meetings	4
Board Meeting - February, 1977	4
Action	5
Golden Anniversary Medallions	7
We Salute	8

THE WOLF AT THE DOOR

Editor's Note: The following is by RNW in a recent issue of The Arapout, the newsletter of Alpha Rho Chapter, University of Texas.

"In answer to the request that I pay my dues; in reply to your request to send a check, I wish to inform you that the present condition of my bank account makes it almost impossible to take your request seriously. My present shattered financial condition is due to the effect of federal laws, municipal laws, county laws, corporation laws, traffic laws, by-laws, in-laws, and out-laws. Thru all of these laws, I am compelled to pay city tax, school tax, county tax, business tax, income tax, customs tax, excise tax, and syntax.

In addition to these irritating taxes, I am forced by the strong arm of the law to get a business license, city license, state license, sign license, dog license, hunting license, fishing license, not to mention a marriage license. For my own protection I am compelled to carry life insurance, liability insurance, hospital insurance, rent insurance, fire insurance, compensation insurance, accident insurance, and old age insurance. My business is so governed that it is no easy matter to find out who owns it. I am suspected, inspected, expected, disrespected, rejected, examined, informed, required, summoned, fined, commanded and compelled, until I provide an inexhaustible supply of money for every human need, desire, or hope of the human race.

Simply because I refuse to donate to something or other I am boycotted, talked about, lied about, held up, held down, and robbed until I am almost ruined. I can tell you honestly that except for a miracle that has happened, I could not enclose this check. The wolf that comes to so many doors nowadays has just had pups in my kitchen. I sold them and here is the money."

C.U. CYCLES TO STILLWATER

By Kirk Sarell
Gamma Theta
University of Colorado

The beginning in 1974 was the Last Game Ball Relay to the U.S. Air Force Academy . . . in 1975, Buffs Bikin' to 'Braska took us to Lincoln . . . and then in 1976, in dramatic proof of not having learned from previous experience, C.U. Cycles to Stillwater came into being. Once again, members of Gamma Theta Chapter at the University of Colorado were on the road, astounding friends, embarrassing family members and raising \$600 for a local charity.



Gamma Theta members at the end of their "C.U. Cycles to Stillwater" Project.

On Thursday, November 8 at 6:00 a.m. (yes, that time of the day really does exist), fifteen members and pledges assembled at the stadium in Boulder for the '76 version of the chapter's annual fall community service/fellowship/school spirit overland venture. The destination: Stillwater, Oklahoma of Oklahoma State University fame, and the November 10 CU-OSU Big Eight football game. Armed with Saturday's game ball (or symbolic representation thereof), three bi-

cycles, a van, and a crucial lack of common sense, we set bravely forth unto battle with the cold, darkness, lack of sleep, trucks (which tend to be notably larger than bicycles), anti-social farm dogs (wolves to us), dying bicycles, wind, and the general horrors of the Flat. Nonetheless, 650 miles and 52 hours later, we triumphantly if painfully arrived on the OSU campus to present C.U. Coach Mallory with the relay football and sit back to watch the Buffs do their thing against the Cowboys.

In weeks previous to the ride, chapter members were busy contacting local businesses and school alumni for sponsorships. From these various donations came the bulk of the \$600 check presented to the directors of the Boulder County Board for Developmental Disabilities. This money was used for the installation of a new lighting and electrical system in Carmel House, a Boulder home for mentally retarded adults. The new system was necessary for the home to pass housing codes.

On the relay, participants took turns exercising one of the three bicycles for a distance ranging from three to eleven miles, depending on prevailing geographical and physiological conditions. Stops were made for meals, but not any other sensible causes such as nightfall. While riding through Denver at the beginning of the trip, part of the group did stay temporarily behind for a meeting with local news media at the State Capitol, where film footage was taken by two of the major television stations. From Denver, the entourage headed south and east, crossing into Kansas early (early) Friday morning and reaching the Oklahoma border late Friday afternoon to shatter a popular previously-held belief that the state was flat. One long night of broken bicycle spokes later, we rejoiced in the rites of Sunrise Over Stillwater. The return trip is another story entirely . . .

NATIONAL EAGLE SCOUT TRIBUTE FOUNTAIN

by Dr. Lester R. Steig, Past National President

In Kansas City, Missouri, home of Alpha Phi Omega's National Office, there stands a Memorial to those who have attained Eagle Scout status, Scouting's highest rank.

The Eagle Scout Tribute Fountain, located at 39th and Gillham, incorporates statuary originally a part of the Pennsylvania Station in New York City. It was dedicated on October 6, 1968 as a tribute to all who have attained the coveted Eagle Scout rank. It was built on Kansas city public park land, utilizing the statuary as a gift from the Pennsylvania Railroad. Mr. and Mrs. John W. Starr promoted the gift from the Railroad and financed the construction in the park. Mr. Starr, an Alpha Phi Omega Brother, is a member of the National Executive Board of the Boy Scouts of America and chairman of the Eagle Scout Tribute Committee.

The twenty-two foot entablature is set in a concrete mounting. An aluminum re-



production of the Eagle Scout badge occupies the center wreath. The badge ribbon is decorated in brilliant red, white and blue colors. A silver eagle hangs beneath it. The fountain in front of the entablature is brightly lighted at night so it may be seen from a long distance.

The statue also exemplifies present activities of the National Eagle Scout Asso-

ciation, which counts among its membership a large number of Brothers of Alpha Phi Omega. In a national survey several years ago, the Knights of Dunamis, forerunner of NESA, found that most of its Eagle Scouts became members of Alpha Phi Omega upon entering college. We can therefore see a strong relationship between Alpha Phi Omega and NESA.

This tribute, which, in the words of Mr. Starr, "honors the Scouting program as a whole, with emphasis on citizenship, physical fitness and character building influence on boyhood in America, and the Eagle Scout rank embodies all of these ideals. It marks the accomplishment and challenges coming generations of Scouts to strive to achieve and become Eagle Scouts."

Be sure to make it a point to see the Eagle Scout Tribute Fountain, a highlight of Kansas City, the city of fountains.

Brothers on the move . . .

Joseph G. Iffrig, Jr., an alumnus of Zeta Theta at Drexel University, is currently working for the Bendix corporation on tracking and recording a scientific satellite's (LANDSAT-2) earth survey data in Islamabad, Pakistan.

Ray Alverson, an alumnus of Beta Sigma, Texas Tech, and former Sectional Chairman for East Texas, has been selected by the Jaycees as one of their 1977 Outstanding Young Men of America.

King Way Gee, an alumnus of Epsilon Zeta Chapter, Rensselaer Polytechnic Institute, has been transferred by the Federal Highway Administration, his employer, from Troy, New York, to Miami, Florida. King is a past president of Epsilon Zeta and a Chapter Distinguished Service Key recipient.

Mark Ravenscroft, an alumnus of Beta Chapter, University of Pittsburgh, is serving as County Commissioner for Summit County, Ohio.

Lloyd DeVries, an alumnus of Phi Chapter, Syracuse University, has been appointed assistant editor at WRC-AM, an NBC station in Washington, D.C.

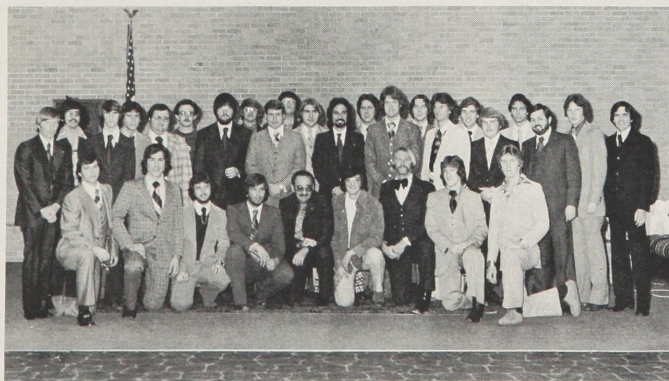
INSTALLATIONS

ETA XI CENTRAL WASHINGTON STATE COLLEGE

On December 4, 1976 Eta Xi Chapter of Alpha Phi Omega, was reactivated at Central Washington State College in Ellensburg, Washington. Reactivating the chapter on behalf of the National Fraternity was Dr. John E. Hanke, National Alumni Chairman. David Corning, Section 8 Chairman, who was instrumental in the reactivation, assisted Dr. Hanke. Brothers from Kappa Rho Chapter at Seattle University performed the ritual. 32 students were initiated into Eta Xi. The Chapter President at the time of reactivation was Ralph E. Mead, and Gary W. Heesacher served as Advisory Chairman.

PI MU MOBILE COLLEGE

Rejoining the ranks of active chapters on January 15, 1977 after nine years of inactivity was Pi Mu Chapter at Mobile College in Mobile, Alabama. Roger A. Sherwood, National Executive Director, reactivated the chapter on behalf of the National Fraternity. He was assisted by Frank Buttler, Alabama Sectional Chairman. Brothers from Psi Chi Chapter, University of South Alabama, assisted by Delta chapter, Auburn University, provided the ritual team. The reactivation group consisted of 25 active members. Bruce Chesser serves as Chapter President and Mike Rose as Advisory Chairman.



Members of Pi Mu, Psi Chi and Delta after the reactivation of Pi Mu at Mobile College on January 15, 1977.

CONVENTION BOARD MEETINGS

At the 1976 National Convention, the National Board of Directors held meetings on December 26 and December 29. Following are the actions taken by the Board at those meetings:

- Adopted a resolution to suspend Upsilon Kappa Chapter, St. Augustine's College, for hazing.
- Received reports from the Committees headed by the National Executive Committeemen, and Endowment Trustees.
- Reviewed all legislative proposals submitted to the Convention, and forwarded its recommendations to the appropriate committees.
- Adopted bank resolutions for 1977-78.
- Confirmed Roger A. Sherwood as National Executive Director.
- Reconfirmed Alex M. Lewandowski as National Legal Counsel.
- Developed the mechanics for conversion of affiliate to active membership.
- Reaffirmed the previous policies of the Board.
- Gave the Executive Committee the right to act in behalf of the Board in emergency situations.
- Commended the National Staff, Convention Committee, Leadership Seminar Chairmen, and Warren Stookey, Convention Coordinator, for their work in conducting an outstanding Convention.

BOARD MEETING FEBRUARY 1977

On February 12, 1977, the National Board of Directors met in Kansas City, Missouri. Present were:

Lawrence L. Hirsch, M.D.	Joseph Scanlon
Lorin A. Jurvis	Lewis Finkel
Ed Andrews	Warren C. Weidman
Clark Israel	Robert J. Harris
Sid Smith	Stan Carpenter
Dr. C. P. Zlatkovich	William B. Rugh
Lucius E. Young, LTC, Ret.	Berkeley P. Duncan
Alex M. Lewandowski	Abe Frishman
Roger A. Sherwood	Darrell Spoon
Dean Arno Nowotny	Michael W. Suhr
Sidney B. North	Earle M. Herbert

Joe Morrone, Title IX Task Force Coordinator, joined the Board for the meeting.

In addition to receiving reports, the Board took the following specific actions:

- Instructed the President, Finance Chairman and National Executive Director to investigate a liability insurance policy for Alpha Phi Omega.
- Elected Dr. Glen T. Nygreen and John Deraval to six year terms as Endowment Trustees.
- Affirmed its willingness to expend reasonable amounts in the attainment of a Title IX exemption beyond the limits of the Title IX Exemption Fund.
- Authorized the expenditure of \$5000 in pursuit of a Title IX exemption, with up to \$2000 of the amount earmarked to employ a law firm to determine the feasibility of litigation to gain an exemption.

- Instructed the Awards Committee to establish a set of standards for the new Sectional Distinguished Service Key.
- Developed a new publications policy, and instructed the National Executive Director to redistribute the Membership Vice President's Guide and prepare the Treasurer's Guide for distribution this Spring.
- Referred to the Finance Committee and Office Operations and Personnel Committee the question of investigating the possibility of budgeting for a Field Representative.

- Instructed the Headquarters Study Committee to submit a plan concerning its recommendations regarding securing a headquarters building for Alpha Phi Omega by the time our current lease expires.
- Voted to ask the Endowment Trustees to make the outstanding loan of \$16,800 a contribution to the operating budget.
- Dedicated the Fall, 1977 Pledge Class to all Alpha Phi Omega Life Members.
- Selected the Opryland Hotel in Nashville, Tennessee as the host for the 1978 National Convention.

Action...

• ZETA KAPPA — BOWLING GREEN STATE UNIVERSITY

A major service project of ZETA KAPPA CHAPTER, BOWLING GREEN STATE UNIVERSITY, was the repainting of a house for a 72 year old widow in Bowling Green. She provided the paint, and the chapter provided the scrapers, paint brushes and labor. The chapter thoughtfully provided "before" and "after" photos to demonstrate the effectiveness of the project. Zeta Kappa can be reached at Box 56, University Hall, Bowling Green State University, Bowling Green, Ohio 43403.



Before

After

• CHARLOTTE ALUMNI ASSOCIATION

On December 16, 1976, Brothers of the CHARLOTTE (N.C.) ALUMNI ASSOCIATION held a Blue and Gold Dinner in Charlotte to commemorate the Fraternity's 51st anniversary. At the dinner, Foster Drakeford, Assistant Professor of Physics, and Dr. J. D. Smith, Head of the History and Political Science Department, both of Johnson C. Smith University, were honored for services rendered and support of the Association. For more information about their activities, contact Ronald L. Nelson, 823 Squirrel Hill Road, Charlotte, N.C. 28213.



Dr. Raleigh Bynum, second from right, presents an award to Foster Drakeford, second from left. Linwood Dixon, left, and Gregory Hagius, Charlotte Alumni Association President, right, join in the presentation.

• GAMMA GAMMA — UNIVERSITY OF CALIFORNIA AT BERKELEY

One of Alpha Phi Omega's newly reactivated chapters, GAMMA GAMMA, UNIVERSITY OF CALIFORNIA AT BERKELEY, played an important role in CARE's Miles for Meals Walk for Hunger in the San Francisco Bay area. The chapter undertook the logistical responsibilities for the East Bay Walk in the Oakland/Berkeley area. This included such vital tasks as recruitment for and coordination of monitors and drop-out cars; provision of equipment for and operation of a communications network utilizing CB radios; and trouble-shooting to resolve last minute problems. The chapter also enlisted the support of a local Scout Troop, as well as Iota Phi Chapter at the University of California at Davis, to provide manpower on the day of the walk. You can contact Gamma Gamma at 300 Eshleman Hall, Berkeley, California 94720.

• MU GAMMA — MORGAN STATE UNIVERSITY

United Cerebral Palsy of Central Maryland, Inc. recently commended MU GAMMA CHAPTER, MORGAN STATE UNIVERSITY, for its assistance in the organization's fund-raising efforts. For the past 4 years Mu Gamma has helped UCP/CM by holding a "road block" at the school in conjunction with the walkathon "Hike-to-Help." The records show that hundreds of dollars have been realized from Mu Gamma's efforts. You can contact Mu Gamma at Box 12, Morgan State University, Baltimore, Maryland 21239.

• PSI UPSILON — SOUTHWESTERN OKLAHOMA STATE UNIVERSITY

The 1977 Area Scout Camporee in the Weatherford, Oklahoma area was conducted by PSI UPSILON CHAPTER, SOUTHWESTERN OKLAHOMA STATE UNIVERSITY. The three day affair, which centered around a variety of competitive Scout activities, was organized, set up, and carried out by the chapter. They report that the event fostered a greater togetherness among the members and pledges. The address for Psi Upsilon is Southwestern Oklahoma State University, c/o Dr. Keith Reichmann, P. 309B, Weatherford, Oklahoma 73096.

• BETA SIGMA — TEXAS TECH

A new project of BETA SIGMA CHAPTER, TEXAS TECH UNIVERSITY, is a Red Tape Cutting Center. The Center, which is allotted by the Tech University Center Advisory Board, is the new home for the Beta Sigma and Womens' Service Organization offices. Its purpose is to handle problems for Tech Students, and a fitting motto of "Ask Us" has been adopted. For more information, contact Beta Sigma at Box 4333, Tech Station, Texas Tech University, Lubbock, Texas 79409.

Action...

• ALPHA CHI — MIT

Last fall the Brothers of ALPHA CHI CHAPTER, MASSACHUSETTS INSTITUTE OF TECHNOLOGY, had more than just the presidential elections to be concerned about. The Ugliest Man On Campus elections were also underway and they raised the unprecedented amount of \$7,273.69 on a campus with a total enrollment of only 8,500 students. The previous record was \$3,083.83 in 1971. The top three of ten candidates each collected over \$1,100. All proceeds collected last fall were donated to the American Cancer Society. You can contact Alpha Chi at 84 Massachusetts Avenue, Cambridge, Massachusetts 02139.



UMOC candidates at MIT pose for formal portrait.

• GAMMA XI — ROCKHURST COLLEGE

Parents who would like to surprise students with homemade birthday cakes but who fear how their special remembrances will fare in the mail have an option because of GAMMA XI CHAPTER, ROCKHURST COLLEGE (MO.). The chapter, for \$5.00, will make birthday cakes on request, decorate them, and deliver them on the student's birthday. The service has been enthusiastically received by the parents, and has been an enjoyable project for Gamma Xi members. You can contact Gamma Xi at Rockhurst College, 5525 Troost Ave., Massman 9, Kansas City, Missouri 64110.

• ALPHA RHO — UNIVERSITY OF TEXAS

Breaking the Region VII Heart Fund Collection record was ALPHA RHO CHAPTER, UNIVERSITY OF TEXAS. Alpha Rho collected a total of \$6,400 in the 1976-77 Heart Fund Campaign. The Heart Fund Hold-Up on February 26 was organized by active member Jim Kean as part of a psychology-communication project. The average collection at this hold-up was \$24.28 per person. The remaining \$3,729 came from the Fall semester hold-up and collections throughout the year. With Heart Fund collections in hand, APO chapters from all over Texas met at Lost Pines Boy Scout Camp near Austin for an overnight campout on March 4. The next morning, the chapters gathered in Austin for the race to the Capitol. The race resulted in the presentation of the donations to Heart Fund officials. You can contact Alpha Rho at 207 Texas Union, University of Texas, Austin, Texas 78712.

• DELTA RHO — RUTGERS

The eighth annual "Walk for Life" was recently sponsored by DELTA RHO CHAPTER, RUTGERS UNIVERSITY (NJ). The event, designed to raise funds for the March of Dimes, set an all-time record by raising over \$72,000. More than 2100 college, junior high and high school students participated in the 20 mile walk in a steady rain. The chapter sponsors and organizes the annual event, which is a major undertaking. For more information, contact Delta Rho at RPO 2909, Rutgers-The State U, New Brunswick, New Jersey 08903.

• SIGMA THETA — ST. MARY'S COLLEGE

Service to the campus was the theme of a recent project of SIGMA THETA CHAPTER, ST. MARY'S COLLEGE. In early March the school held a parent telephone solicitation program in Chicago, and the members of Sigma Theta played a vital role. The Director of Parent Giving for the college commended their responsive support of the program. For more information write to Sigma Theta at P. O. Box 728, St. Mary's College, Winona, Minnesota 55987.

• DELTA SIGMA — UNIVERSITY OF CONNECTICUT

This Spring, for the 29th consecutive year, DELTA SIGMA CHAPTER, UNIVERSITY OF CONNECTICUT, and the local Gamma Sigma Sigma chapter, sponsored the Campus Community Carnival (CCC), a two-week program of fund raising to benefit various charities and civic organizations. The CCC kicked off on March 21, and before ending on April 1, the event staged a dance marathon, a scuba marathon and a radiothon over student-run WHUS radio. The radiothon is traditionally the biggest fund raiser of the CCC, and, after winning approval of a rule waiver from the Federal Communications Commission, was launched March 28. It solicited donations between noon and midnight each day until its conclusion March 31. During the same hours as the radiothon, the U of C Scuba Diving Club dove in a large tank in the lobby of the Student Union Building. A dance and pie-throwing contest were held in the U of C ROTC Hanger March 31. The final event featured horse racing films in which wagers were placed with play money, redeemable for gift certificates at the close of the race. Since its inception in 1948, the CCC has raised more than \$300,000 for various local, state and national charities. You can contact Delta Sigma at Student Union, Box U-8, University of Connecticut, Storrs, Connecticut 06268.



Mr. Super CCC Man (Brother Stephen Lipman) accepts the first donation of the 29th Annual Campus Community Carnival from University of Connecticut President Glenn Ferguson (seated). Accompanying him are Marilyn Biedrycki of Gamma Sigma Sigma and Mike Lawlor of Delta Sigma, CCC Chairman.

Action...

• ALPHA — LAFAYETTE COLLEGE

Last October, ALPHA CHAPTER, LAFAYETTE COLLEGE sponsored its Second Annual Open Wrestling Tournament. Over 450 high school, college, and "old-timers" division wrestlers competed in this event for medals. With \$1,700 in profits made, the project could be termed both a financial and fellowship-promoting success.

Other significant chapter service projects were the weekly recycling of papers from a central area in each on-campus dormitory, a trail clean-up along a seven-mile section of the Appalachian Trail which the chapter is responsible for maintaining, and an upcoming annual swim meet for Boy Scouts. For more information on any of these projects contact Alpha Chapter at Lafayette College, P.O. Box 3001, College Station, Easton, PA 18042.



Alpha Chapter members pose for a picture during their recent Appalachian Trail clean-up project.

• PHI EPSILON — MAINE MARITIME ACADEMY

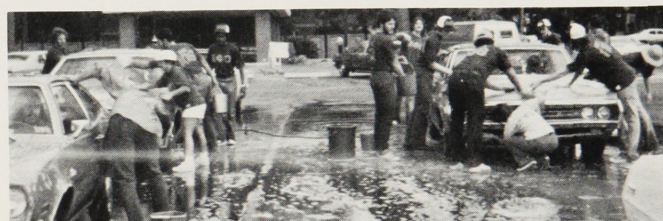
The largest annual project of PHI EPSILON CHAPTER, MAINE MARITIME ACADEMY, was an overwhelming success. Klondike Derby "77", run at the Academy for Scouts from the Katahdin Area Council, attracted 784 Scouts and leaders from more than 40 troops, with 75 sledges participating. They spent the nights of February 4 and 5 aboard the Academy's ship, State of Maine. On the 5th they competed on deep snow in cold weather in skill areas such as map and compass, knife and ax, fire building, tarp pitching and first aid. The sledges were judged for appearance and best equipped. It was a good time for both the Scouts and Brothers participating. To learn more about the project, contact Phi Epsilon at Box 142, Maine Maritime Academy, Castine, Maine 04421.

• TAU EPSILON — TENNESSEE TECH

In early March TAU EPSILON CHAPTER, TENNESSEE TECH, took part in Omega Phi Alpha's 5th Annual Muscular Dystrophy Dance Marathon on their campus. Dave Rizzuto, chapter president, and Linda Harmon represented Tau Epsilon in the 52 hour event. The chapter raised \$2,200 through pledges, road-blocks and door-to-door solicitations. Two other Brothers, Ron Estes and Bruce Martin, represented other organizations and raised \$800 and \$500, respectively. Tau Epsilon won first place for raising the most money and the organizations represented by Ron and Bruce came in second and third. Overall, \$8,000 was raised to defeat Muscular Dystrophy. You can congratulate Tau Epsilon at Box 5252, Tennessee Technological University, Cookeville, Tennessee 38501.

• TAU — UNIVERSITY OF FLORIDA

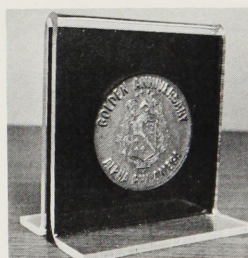
While driving home from the National Convention, two Brothers from TAU CHAPTER, UNIVERSITY OF FLORIDA, developed an idea for a rather unique project. They developed the details, and the chapter adopted the "Disco Car Wash", a large-scale car wash, with loud music playing continuously while the Brothers washed the cars in a choreographed fashion. Assisted by the local Gamma Sigma Sigma Chapter, the Chapter decided to conduct the all-day project, with the proceeds going to the Heart Fund. During the month-long preparation period, the chapter secured a large parking lot, ample sound equipment and records, and, for those who wanted to, rehearsed dance routines by which to wash the cars. Pre-sale tickets and a major publicity campaign (radio, TV and newspapers) gave the project the added touches it needed for success. Perhaps it was the novelty of having a car washed "disco" style, or just the hard work of the Brothers in selling tickets, but the "Disco Car Wash" was a huge and overwhelming success. Over \$600 was raised, and, at a dollar a car, that's a lot of cars to wash!! Tau Chapter found a new annual project, the Heart Fund was \$600 richer, and the Brothers had the time of their lives at the "Disco Car Wash". You can contact Tau at 300 J. Wayne Reitz Union, University of Florida, Gainesville, Florida 32611.



The "Disco Car Wash" in action.

GOLDEN ANNIVERSARY MEDALLIONS

Golden Anniversary Medallions are still available for purchase from the National Office. The Medallion in base metal with bronze oxidized to gold oxidized color is \$5.00. An attractive plexiglas stand in which to display your Medallion is available for \$2.50. If you order the Medallion and stand together, the price is \$7.00. You can also order Medallions in 10K or 14K gold. The 10K is \$225.00 and the 14K is \$300. To order, please complete the order blank and send it, with your check, to Alpha Phi Omega, 1100 Waltower Building, Kansas City, Missouri 64106.



_____ Basic Medallion _____	_____ 10K Gold _____	_____ 14K Gold _____
(\$5.00)	(\$225.00)	(\$300.00)
_____ Medallion in Plexiglas Stand _____	_____ Plexiglas Stand _____	
(\$7.00)	(\$2.50)	

Total Amount \$ _____

Please ship to:

Name _____

Address _____

WE SALUTE . . .

The Brothers currently serving as Alpha Phi Omega Sectional Chairmen, as well as those who are members of Sectional Staffs, and those who have served the Fraternity in these capacities through the year.

The Sectional Chairmen, through dedication to our principles, are major factors in the strength of Alpha Phi Omega. They gave unselfishly of their time and energy in promoting and extending Alpha Phi Omega's program of Service, and in providing guidance and support to local chapters.

They deserve a special thanks from all of us. We wish to recognize the following Brothers, who are currently serving the Fraternity in this manner.

Region I

- Section 95 (New England) — Robert Smullin
- Section 97 (New York City, Long Island) —
Tony Campasano
- Section 98 (Puerto Rico) — Reynold Rodriguez
- Section 99 (New Jersey) — William Cronrath

Region II

- Section 88 (Eastern Upstate N.Y.) — Michael Betrus
- Section 89 (Western Upstate N.Y.) — Stan Wijkowski
- Section 90 (Central Pennsylvania) — Steve Belinski
- Section 91 (Northeastern Penn.) — John Zuk
- Section 92 (Southeastern Penn.) — Tom Schneider

Region III

- Section 79 (Western & Central North Carolina) —
Daniel Bryant
- Section 80 (Eastern North Carolina) — Lee Wallace
- Section 82 (Virginia) — Carter Foulds
- Section 84 (Maryland, Delaware, District of Columbia) —
Jerry Schroeder

Region IV

- Section 68 (Eastern Tennessee) — Richard Nicholas
- Section 69 (Alabama) — Frank Buttler, Jr.
- Section 70 (Western Tennessee) — Keith Franklin
- Section 71 (Mississippi) — Harold Naylor
- Section 72 (Georgia) — Douglas Troutman
- Section 74 (Florida) — John Springer
- Section 77 (South Carolina) — Larry Moore

Region V

- Section 57 (Ohio) — John Anderson
- Section 61 (W. Virginia) — Rod Wilson
- Section 63 (Western Pennsylvania) — Leland Foland
- Section 67 (Kentucky) — Dennis Busher

Region VI

- Section 48 (Northern Illinois) — Gary Anderson
- Section 49 (Southern Illinois) — Ted Greenhouse
- Section 52 (Indiana) — Greg Crawford
- Section 54 (Michigan) — Reid Barwick

Region VII

- Section 40 (West Texas) — Steve Rogers
- Section 41 (North Central Texas) — Don Huber
- Section 42 (East Texas) — Wilfred Krenek
- Section 45 (Louisiana) — Lester Williams

Region VIII

- Section 32 (Oklahoma) — Larry Springer
- Section 33 (Arkansas) — Harry Budd
- Section 34 (Kansas) — Ron Kite
- Section 35 (Western Missouri) — David Sauvey
- Section 49 (Eastern Missouri) — Ted Greenhouse

Region IX

- Section 21 (Iowa) — Douglas White
- Section 23 (Minnesota, North & South Dakota) —
Robert Satterstrom
- Section 26 (Nebraska) — David Francis
- Section 27 (Wisconsin) — Edmund Elworthy

Region X

- Section 1 (South Central California) — Gary Saxer
- Section 2 (Southern California, Arizona) —
Douglas Duplisea
- Section 4 (Northern California, Nevada, Hawaii) —
Holland Golec
- Section 7 (Montana, Idaho Panhandle, Eastern
Washington) — Allen Lee
- Section 8 (Oregon, Western Washington, Alaska) —
Allen Lee
- Section 14 (Southern Idaho, Utah) — Rulon Skinner