



# torch and trefoil



SPRING 1979

## REACH OUT

Lorin A. Jurvis, National President, emphasized in his inaugural remarks at the National Convention the need to Reach Out in the days ahead. Excerpts of those remarks were carried in the last issue of ***Torch and Trefoil***. Alpha Phi Omega is embarking upon a new program to Reach Out to those campuses where the Fraternity once was, but is no more.

Under the title of "Reach Out: A Program of Alpha Phi Omega to Meet the Challenges of the '80's," a massive reactivation effort is now underway. Developed by the Membership and Extension Committee and adopted by the National Board of Directors at its February meeting, the program will focus upon the reactivation of inactive chapters of Alpha Phi Omega.

A potential resource to undertake the reactivation of each inactive chapter has been identified. These resources include alumni, Life Members, Sectional Chairmen, Sectional Staff members and active chapters. Personal letters were sent to potential resources in April, asking them to undertake the reactivation of a specific chapter. Those responding affirmatively have received a "Reach Out" kit, containing the methodology for reactivating a chapter, sample publications and historical data about the target chapter. Where a resource is unable to participate, a new resource will be identified and asked to undertake the reactivation effort.

The program will be coordinated by the Director of Membership Services, working

closely with the Membership and Extension Chairman. Through ***Torch and Trefoil*** and other publications the entire membership will be informed of the progress of the program. Individual communications will be maintained with all volunteers, and quarterly reports by the Membership and Extension Chairman will be issued.

The National Service Committee will be developing a sample service project list to assist the reactivation group in the development of a service program encompassing the Fraternity's four fields of service.

The Fraternity's number one priority will continue to be the maintenance of active chapters. The Reach Out program will enhance communications within the Fraternity and give alumni a new degree of involvement.

Currently there are 259 inactive chapters of Alpha Phi Omega. This program is designed to meet the challenge presented by the large number of inactive chapters. It is our aim to reduce significantly the number of inactive chapters. Already 39 of the potential resources have agreed to make the effort to bring Alpha Phi Omega back to their target campus. With the dedicated support of all Fraternity members - undergraduates, alumni and professional staff - we will see Alpha Phi Omega reach out and extend Leadership, Friendship and Service to campuses, communities and individuals on a scale never before attempted.



**Alpha Phi Omega  
National Service Fraternity**

**Volume, 54, No. 4  
Spring, 1979**

**National Officers**

Lorin A. Jurvis ..... Washington, DC  
National President  
Dr. C. P. Zlatkovich ..... Austin, TX  
National Vice President

**Members-at-Large**

Stan Carpenter ..... Athens, GA  
Lewis Finkel ..... New York, NY  
Dr. John E. Hanke ..... Cheney, WA  
Clark Israel ..... Kansas City, KS  
Sid Smith ..... Belvedere, CA

**Regional Representatives**

I. Ed M. Andrews ..... Orono, ME  
II. Warren C. Weidman ..... Reading, PA  
III. Robert J. Harris ..... Raleigh, NC  
IV. Wendell Wainwright ..... Memphis, TN  
V. William B. Rugh ..... Toledo, OH  
VI. Berkeley P. Duncan ..... Ann Arbor, MI  
VII. Abe Frishman ..... Garland, TX  
VIII. Darrell Spoon ..... Wellington, KS  
IX. Michael W. Suhr ..... Minneapolis, MN  
X. Earle M. Herbert ..... Los Angeles, CA

**National Executive Director**

Roger A. Sherwood ..... Kansas City, MO

**Legal Counsel**

Alex M. Lewandowski ..... Kansas City, MO

**Past Presidents**

M. R. Disborough ..... Wilmington, DE  
E. Ross Forman ..... Philadelphia, PA  
Tom T. Galt, M.D. .... Spartanburg, SC  
Lawrence L. Hirsch, M.D. .... Chicago, IL  
Dean Arno Nowotny ..... Austin, TX  
Dr. Glen T. Nygreen ..... Bronx, NY  
William S. Roth ..... Birmingham, AL  
Dr. Lester R. Steig ..... Palo Alto, CA  
Lucius E. Young, LTC, Ret. .... Washington, DC

**Life Members**

George F. Cahill ..... Pittsburgh, PA  
Irwin H. Gerst ..... Palos Verdes Peninsula, CA  
Sidney B. North ..... Lee's Summit, MO  
Dr. Harold F. Pote ..... LaJolla, CA  
Joseph Scanlon ..... Kansas City, MO  
A. G. Spizzirri ..... Louisville, KY

**Founding Life Members**

Lewis B. Blair ..... Cheverly, MD  
Ellsworth S. Dobson ..... Collbran, CO  
Herbert Heinrich ..... Honolulu, HI  
Donald L. Terwilliger ..... Deal Park, NJ  
William T. Wood ..... Delray Beach, FL

**Ex-Officio Members**

Downing B. Jenks ..... St. Louis, MO  
James L. Tarr ..... North Brunswick, NJ

TORCH AND TREFOIL (USPS 633-960) is issued regularly four times a year, September, November, February and April, from Office of Publication, 1100 Waltower Building, 823 Walnut Street, Kansas City, Missouri 64106. Printed by Rosse Lithographing Company, Printers and Lithographers, Kansas City, Missouri. Second Class Postage paid at Kansas City, Missouri. Subscription price \$1.50 per year.

**CONTENTS**

Reach Out .....	1
Volunteers . . . Our Most Valuable Resource .....	2
Convention Candids .....	3
Installations .....	4
Brothers on the Move .....	5
Alpha Phi Omega Flag Now Available .....	5
Action .....	6
Thank You .....	8

**VOLUNTEERS . . .  
OUR MOST VALUABLE RESOURCE**

Have you ever wondered what makes Alpha Phi Omega successful . . . how we get the job done? It's because of our volunteers!

Let's look at the make-up of the National Office. It consists of two professional employees - the National Executive Director and the Director of Membership Services; four full time clerical employees who handle the bookkeeping, membership registration, data processing and secretarial duties; and a part-time mail clerk who is employed during the academic year. That's a relatively small staff for an organization with 346 chapters.

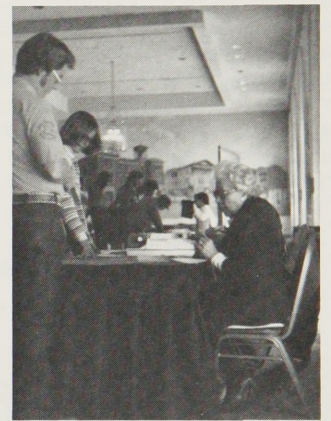
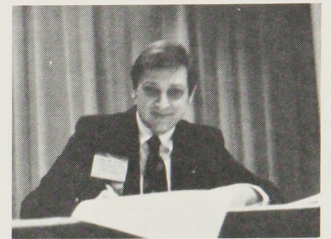
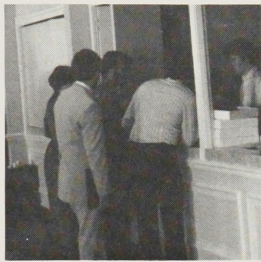
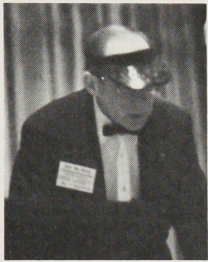
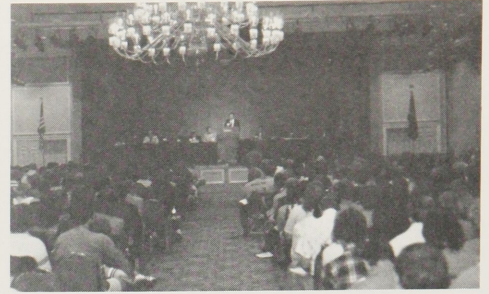
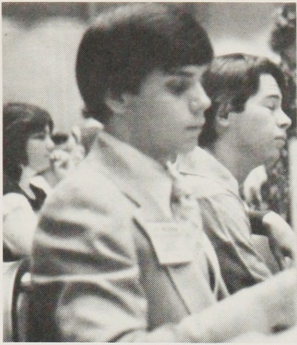
The volunteer force consists of 40 members of the National Board of Directors, 45 Sectional Chairmen, and over 200 Sectional Staff Members. In addition, there are many members and alumni who are not a part of the formal structure who are working in behalf of the Fraternity. None of these volunteers are reimbursed for any expenses of time, money or effort in behalf of the Fraternity. They support Alpha Phi Omega because of a commitment to our ideals and because they desire to see others enjoy the benefits of membership in our great organization.

It would be physically impossible for the National Office to serve the needs of the chapters, sections and regions of Alpha Phi Omega. That's why the volunteers are so important to us. They make things happen in Alpha Phi Omega. And they report that they receive rewards in turn . . . in knowing that their Fraternity is successful.

Alpha Phi Omega would be far weaker without the tremendous efforts in time, energy, and personal funds expended by our volunteers. And there's always a need for more. Many of you are graduating this year and we'd like you to consider maintaining your involvement. Let us know if you'd like to help, and we'll plug you in.



# CONVENTION CANDIDS



ORLAND HOTEL

Alpha Phi Omega  
1978 NATIONAL CONVENTION  
NASHVILLE TENN  
DEC 27-29 1978



# INSTALLATIONS

## NU RHO

### COLLEGE OF WILLIAM AND MARY



Alpha Phi Omega officially returned to the College of William and Mary, Williamsburg, Virginia on December 2, 1978 with the reactivation of Nu Rho Chapter. Lorin A. Jurvis, then National Vice President, officiated at the installation, assisted by Robert Harris, Region III Representative. The ritual was conducted by members of Zeta Beta Chapter, Virginia Polytechnic Institute and State University. The reactivation group was composed of twenty-five members and five advisors. George M. Homewood, III served as Chapter President and James S. Kelly as Advisory Chairman.

## OMEGA PHI

### TOUGALOO COLLEGE



Omega Phi, the Fraternity's 597th Chapter, was chartered at Tougaloo College, Tougaloo, Mississippi on December 9, 1978. Dr. R. L. Brittain, former Region IV Representative, presented the charter in behalf of the National President. He was assisted by Gary Ramsey, Mississippi Sectional Chairman. The charter group consisted of sixteen members and four advisors. The ritual team was provided by Epsilon Iota Chapter, Mississippi State University. Abraham Morris is the Chapter President and William L. Woods is the Advisory Chairman.

## OMEGA UPSILON

### FLORIDA INTERNATIONAL UNIVERSITY

The 12th Florida Chapter of Alpha Phi Omega became a reality on December 8, 1978 with the chartering of Omega Upsilon Chapter at Florida International University, Miami, Florida. Stan Carpenter, then serving as Region IV Representative, officiated at the ceremony. The installing chapter was Sigma Chi Chapter, Miami-Dade Junior College. The charter group was made up of nineteen members, six advisors and one honorary member. Tom Tilden was the Chapter President and Thomas Riley was the Advisory Chairman.

## OMEGA TAU

### BELOIT COLLEGE



Beloit College, Beloit, Wisconsin became the site of Omega Tau Chapter of Alpha Phi Omega on December 2, 1978. Michael W. Suhr, Region IX Representative, represented the National President in the presentation of the charter. He was assisted by John Chikow, Sectional Chairman, and Bob Barkhurst, Sectional Vice Chairman. Tau Upsilon Chapter, University of Wisconsin-Platteville provided the ritual team. There were seventeen members, four advisors and one honorary member in the charter group. Randolph A. Smith is the Chapter President and Robert G. Black is the Advisory Chairman.

## XI THETA

### FERRIS STATE COLLEGE

On December 10, 1978, Xi Theta Chapter of Alpha Phi Omega was reactivated at Ferris State College, Big Rapids, Michigan. Berkeley P. Duncan, Region VI Representative, officiated at the reactivation ceremony. The ritual was conducted by Nu Beta Chapter, Hope College. Fifteen members and four advisors composed the reactivation group, with William Fries, Jr. serving as Chapter President and William J. Papo as Advisory Chairman.

## TAU BETA

### APPALACHIAN STATE UNIVERSITY

The first reactivation of 1978-79 occurred on September 16, 1978 when Tau Beta Chapter returned to Appalachian State University, Boone, North Carolina. Robert Harris, Region III Representative, officiated at the ceremony. The ritual was conducted by Pi Delta Chapter, Western Carolina University. There were sixteen members and five advisors in the reactivation group. Donald Newsome was the Chapter President and Thomas J. Liggett was the Advisory Chairman.



Installations (Continued)

LAMBDA GAMMA  
MANHATTAN COLLEGE

Rejoining the ranks of active chapters on December 16, 1978, the Fraternity's 53rd birthday, was Lambda Gamma Chapter, Manhattan College, Riverdale, New York. Dr. Glen T. Nygreen, Past National President, presented the charter. He was assisted by Fred Pollack, Sectional Chairman. The ritual was conducted by members of Kappa Beta Chapter, Polytechnic Institute of New York and Pi Kappa Chapter, Pace University. The reactivation group consisted of nineteen members and four advisors. Albert St. Jacques is the Chapter President and Davis C. Herron is the Advisory Chairman.

IOTA RHO  
FLORIDA STATE UNIVERSITY

As a result of efforts by Michael R. Moore, Florida Sectional Chairman, Iota Rho Chapter, Florida State University was reactivated on March 31, 1979. Representing the National President in the recharter ceremony was Tom Barnawell, former assistant editor of *Torch and Trefoil*. He was assisted by Michael R. Moore. Tau Chapter, University of Florida conducted the ritual. The reactivation group consisted of nineteen members, six advisors and five honorary members. Darryl Crooms is the Chapter President and Randall G. Felton is the Advisory Chairman.

OMEGA CHI  
JACKSONVILLE STATE UNIVERSITY



On March 31, 1979 Omega Chi Chapter of Alpha Phi Omega was chartered at Jacksonville State University, Jacksonville, Alabama. William S. Roth, Past National President, presented the charter in behalf of the National President. He was assisted by Dan Lessley, Alabama Sectional Chairman. The ritual was performed by representatives of several Alabama chapters. There were fifteen members, seven advisors and one honorary member in the charter group. David Snow serves as Chapter President and Dr. Ted Childress is the Advisory Chairman.

ALPHA PHI OMEGA FLAG NOW AVAILABLE

There's a new way to display your pride in your Fraternity — an ALPHA PHI OMEGA FLAG. We're able to offer a 5' x 3' blue nylon flag with gold Alpha Phi Omega Greek letters, as pictured on the left. We can add the Greek letters for your chapter at a slight additional cost. Also available are a staff and stand. The staff features a Golden Eagle, the Fraternity Bird, on the top. It's a beautiful item, and should be a part of your chapter property.



TO: **Alpha Phi Omega**  
**1100 Waltower Building**  
**Kansas City, MO 64106**

Please send the following:

- \_\_\_\_\_ Alpha Phi Omega Flag(s) @ \$50.00 .....
- \_\_\_\_\_ Flag staff and stand @ \$50.00 .....
- \_\_\_\_\_ Chapter Greek letters @ \$10.00 .....

Chapter Name \_\_\_\_\_

TOTAL \_\_\_\_\_

Mail To: \_\_\_\_\_  
(Name)  
\_\_\_\_\_  
(Address)  
\_\_\_\_\_  
(City, State, Zip Code)

Please allow 8 weeks for delivery.



# Action...

## • NU XI — BIRMINGHAM SOUTHERN COLLEGE

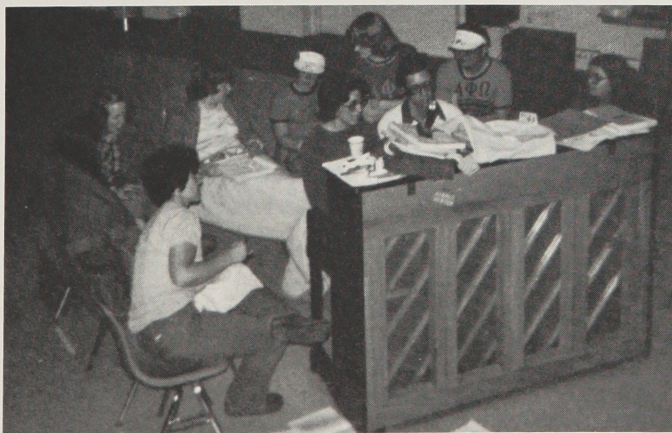
Service to Scouting has been fostered by NU XI CHAPTER, BIRMINGHAM SOUTHERN COLLEGE, through the chapter's sponsorship of two Cub Scout Dens. One of the Dens meets on the campus, and has full chapter support. The chapter also helps with the Birmingham Area Council Annual Powwow and will begin other Scouting projects in the near future. For more information contact Nu Xi at Post Office Box A-30, Birmingham, Alabama 35204.



Steven Zachow (L), Past President, and Warren Feist of Nu Xi with their Cub Scout Den.

## • OMEGA MU — CLARION STATE COLLEGE

The Fall 1978 pledge class of OMEGA MU CHAPTER, CLARION STATE COLLEGE (Pennsylvania) raised funds to the tune of over \$800 for the American Cancer Society through their pledge class project. The project, a Sing-a-Thon, involved securing pledges from sponsors for each hour they sang. A total of 15 pledges sang, while active members provided moral support, served food and ran errands. A number of pledges sang for 22 hours. The project was successful, not only from a fund raising aspect, but in raising the level of awareness about Alpha Phi Omega on the campus and in the community. Omega Mu's address is 111 Harvey Hall, Clarion State College, Clarion, Pennsylvania 16214.



The Omega Mu Pledge Class sings the 43rd verse of "Old MacDonald" at 3:00 A.M.

## • MU NU — WESTERN ILLINOIS UNIVERSITY

In the Spring of 1977, MU NU CHAPTER, WESTERN ILLINOIS UNIVERSITY, initiated a new and worthwhile service project for the University. Working with the director of the non-profit campus public radio station, WIUM, the members contacted area businessmen, asking them to donate an item or service to be auctioned off on a live radio auction. All of the proceeds went to the radio station to help it better serve the students at WIU and the residents of the surrounding communities. The response of students and residents was fantastic, netting \$1,250 for the station. Mu Nu is gearing up for the third annual Alpha Phi Omega-WIUM Benefit Auction this Spring. For information on this project write to Mu Nu Chapter at Western Illinois University, Activities Center, University Union, Macomb, Illinois 61455.

## • LAMBDA XI — PAN AMERICAN UNIVERSITY

Service to Scouting was the outcome of a recent project of LAMBDA XI CHAPTER, PAN AMERICAN UNIVERSITY (Texas). Working with Raul Chavez, Broadcast Relations Coordinator at the BSA National Council, the chapter edited sample scripts to promote Scouting in their area. After getting the scripts set, the members recorded radio and television promotions for Scouting. Because of the large Latin population in the area, recordings were made in both Spanish and English. For more information you can write to Lambda Xi at University Center 332, Pan American University, Edinburg, Texas 78539.

## • MU OMICRON — CLARKSON COLLEGE

Only three days into the Fall semester, MU OMICRON CHAPTER, CLARKSON COLLEGE (New York) raised over \$450 for the Muscular Dystrophy Association by sponsoring a roller skating party. This was not the usual marathon-type event. No records for endurance were set and no pledges were made. Instead, over 500 people turned out to enjoy good music, good exercise, and good company, with the admission price going to MD. The roller skating party was truly a FUNd raiser, and an excellent way for Mu Omicron to proudly kick off its 20th year of service. For more information contact Mu Omicron Chapter, c/o Lewis House Desk, Clarkson College, Potsdam, New York 13676.



Mu Omicron Brothers present check at local M.D. telethon.

## • TAU UPSILON — UNIVERSITY OF WISCONSIN-PLATTEVILLE

An ongoing program of TAU UPSILON CHAPTER, UNIVERSITY OF WISCONSIN-PLATTEVILLE is its Merit Badge Counseling Program for the local Scout Council. The Brothers offer their services in their areas of expertise to help local Scouts achieve required merit badges. To find out more about this program write to Tau Upsilon at University of Wisconsin-Platteville, 310 Ottensman Hall, Platteville, Wisconsin 53818.



• **OMEGA OMICRON — CONCORDIA COLLEGE**

In March, OMEGA OMICRON, CONCORDIA COLLEGE (Minnesota) co-sponsored, with two other campus service organizations, a Dance Marathon. The chapter had 5 couples participating, and raised \$1,400 of the total amount of \$12,300. For its efforts, Omega Omicron was recognized as the "outstanding organization" of the Marathon. With the proceeds, a 15 passenger van for the Fargo-Moorhead Activity Center will be purchased. It will be used to transport mentally retarded adults for work opportunities, social activities, educational counseling and therapy. In addition, 50 children in the Big Brother-Big Sister program will be able to go to a summer therapy camp. There was excellent media coverage of the project, an added benefit to the chapter. You can contact Omega Omicron at P.O. Box 1, Concordia College, Moorhead, Minnesota 56560.

• **CHI ZETA — UNIVERSITY OF TENNESSEE AT MARTIN**

For the ninth consecutive year, members of CHI ZETA CHAPTER, UNIVERSITY OF TENNESSEE AT MARTIN used their Spring Break to conduct a Wheelbarrow Push to raise funds for St. Jude Children's Research Hospital in Memphis. The 1979 Push was the most successful ever, raising more than \$50,000 for St. Jude. In the nine years, the total money contributed to St. Jude through the Wheelbarrow Push is \$270,000. You can contact Chi Zeta at P.O. Box 104, Martin, Tennessee 38238.



Chi Zeta Brothers near the end of their week-long Push for St. Jude.

• **IOTA LAMBDA — NORTH CAROLINA STATE UNIVERSITY**

Service to Scouting has been an important part of the service program of IOTA LAMBDA, NORTH CAROLINA STATE UNIVERSITY this year. Last Fall the chapter held an event for handicapped Scouts in North Carolina. In addition, the chapter sponsors Boy Scout and Girl Scout troops in the Raleigh area. You can write to Iota Lambda at Box 5074, College Station, North Carolina State University, Raleigh, North Carolina 27650.



Iota Lambda members working with handicapped Scouts in knot-tying class.

• **DELTA THETA — UNIVERSITY OF LOUISVILLE**

The Student Government Association elections this spring found DELTA THETA, UNIVERSITY OF LOUISVILLE (Kentucky) manning the ballot boxes. The SGA had problems in finding people to work at the polls, and Delta Theta responded promptly, providing the opportunity for more students to vote and making for a successful election. Delta Theta can be reached at Assistant VP for Student Life, University of Louisville, Louisville, Kentucky 40208.

• **ETA MU — UTICA COLLEGE**

Last Fall ETA MU CHAPTER, UTICA COLLEGE (New York) became "Zoo Parents" of a one year old female porcupine named "Quilla". The feeding and veterinarian costs of \$100 per year were made possible through support from the college community. The Fall pledge class conducted a Submarine Sandwich Sale to raise the funds in a few hours. "Quilla" will be the adopted pet of Eta Mu for the next year. You can congratulate the proud parents at Student Activities Office, Utica College, Burrstone Avenue, Utica, New York 13502.

• **BETA OMICRON — UNIVERSITY OF MISSOURI-ROLLA**

Last Fall, BETA OMICRON, UNIVERSITY OF MISSOURI-ROLLA, tackled its fourth annual Walkathon for the March of Dimes. The event was billed as "Superwalk '78" and the chapter reports that it truly was a super walk. Despite bad weather on the day of the walk, 335 people turned out to "Walk a Kilometer for the Life of a Child," and in doing so managed to raise \$8,000 for the March of Dimes. Beta Omicron's address is University of Missouri-Rolla, Student Personnel, Rolla, Missouri 65401.

**BROTHERS ON THE MOVE**

**Richard N. Touchette**, an alumnus of Beta Eta Chapter, University of Missouri-Columbia, is serving with the Peace Corps in Africa.

**John R. Oilar**, an alumnus of Kappa Kappa Chapter, Western New Mexico University, will have his artwork included in ARTISTS/USA 1979-80, a deluxe art book which contains the listings of professional artists from all areas of the country.

**Karen L. Stevenson**, a member of Rho Chapter, University of North Carolina, has been selected to receive a Rhodes Scholarship.

**Terry Miller**, an alumnus of Nu Omega Chapter, University of Alaska, was recently elected Lieutenant Governor of Alaska.

**John C. Willis**, an alumnus of Alpha Delta Chapter, San Diego State University, has been appointed Vice President of Development at TRATEC Incorporated in Los Angeles. TRATEC develops and produces custom and proprietary audiovisual training programs in sales, sales management, applications and industry marketing.

**John Shelton**, an alumnus of Iota Chapter, Park College, Parkville, Missouri, has been elected to the Park College Board of Trustees.

*If you feel strongly about preserving the spirit of Leadership, Friendship and Service on the campuses in the future, one way to insure that is to remember Alpha Phi Omega in your will.*



---

# THANK YOU . . .

Somehow that doesn't seem enough to say to those members currently serving as Alpha Phi Omega Sectional Chairmen. These individuals and their staffs are major factors in the strength of our program. They stimulate and motivate chapters; they solve problems; they demonstrate that we are indeed a National Fraternity; and they help us to keep our purpose before us.

They deserve a special appreciation from all of us. We'd like to recognize and say thanks in behalf of the entire Fraternity to the following Sectional Chairmen:

## REGION I

- Section 95 (New England) - Neal Montgomery
- Section 97 (New York City, Long Island) - Fred Pollack
- Section 98 (Puerto Rico) - Miguel Colon
- Section 99 (New Jersey) - Steve Stamos

## REGION II

- Section 88 (Eastern Upstate N.Y.) - Michael Betrus
- Section 89 (Western Upstate N.Y.) - Joan Hecht
- Section 90 (Central Pennsylvania) - Eric Schubert
- Section 91 (Northeastern Penn.) - John Zuk
- Section 92 (Southeastern Penn., Delaware) - Dan Sylawa

## REGION III

- Section 79 (Western & Central North Carolina) - John Thrasher
- Section 80 (Eastern North Carolina) - Robert Dobo
- Section 82 (Virginia) - Mark Epps
- Section 84 (Maryland, District of Columbia) - Jerry Schroeder

## REGION IV

- Section 68 (Eastern Tennessee) - Chris Fiege
- Section 69 (Alabama) - Dan Lessley
- Section 70 (Western Tennessee, Western Kentucky)  
- Frank Waters
- Section 71 (Mississippi) - Gary Ramsey
- Section 72 (Georgia) - Douglas Troutman
- Section 74 (Florida) - Michael Moore
- Section 77 (South Carolina) - Charles Bowen

## REGION V

- Section 57 (Ohio) - John Anderson
- Section 61 (W. Virginia) - Kevin Mallison
- Section 63 (Western Pennsylvania) - Leland Foland
- Section 67 (Eastern Kentucky) - Dennis Busher

## REGION VI

- Section 48 (Northern Illinois) - Roger Elliott
- Section 52 (Indiana) - John Bowker
- Section 54 (Michigan) - Bob Hainline

## REGION VII

- Section 40 (West Texas, New Mexico) - Frank Hilton
- Section 41 (North Central Texas) - Don Huber
- Section 42 (East Texas) - Wilfred Krenek
- Section 45 (Louisiana) - Lester Williams

## REGION VIII

- Section 30 (Colorado, Wyoming) - John Wetherington
- Section 32 (Oklahoma) - Joe Morrone
- Section 34 (Kansas) - Ron Kite
- Section 35 (Western Missouri) - Terry Burns
- Section 49 (Eastern Missouri, Southwestern Illinois)  
- Bill Brown

## REGION IX

- Section 21 (Iowa) - Cathy Gustafson
- Section 23 (Minnesota, North & South Dakota)  
- Robert Satterstrom
- Section 27 (Wisconsin) - John Chikow

## REGION X

- Section 1 (South Central California) - Jeff Schwartz
- Section 2 (Southern California, Arizona) - Bob Wyka
- Section 4 (Northern California, Nevada, Hawaii)  
- Holland Golec
- Section 7 (Montana, Idaho Panhandle, Eastern Washington)  
- Darrell Keck
- Section 8 (Oregon, Western Washington, Alaska) - Allen Lee
- Section 14 (Southern Idaho, Utah) - Rulon Skinner