

## inside:

### President's Message . . . . . 2

*Struck by Lightning  
by Jack McKenzie*

### Letters to the Editor . . . . . 3

### Chapters . . . . . 4-7

### Torchbearers . . . . . 8-11

*Thank you to all  
our supporters.*

### Our First 25 Years. . . . . 12-14

*75th Anniversary  
Countdown  
by Wilfred M. Krennek*

### Leadership Development . . 15

### Who, What, When & Where . . . . . 16

## NEXT ISSUE:

- *Winter Board Action*
- *Chapters in Action*
- *History Revisited  
1950-1975*



# TORCH & TREFOIL

THE QUARTERLY PUBLICATION OF ALPHA PHI OMEGA  
NATIONAL SERVICE FRATERNITY

*Winter/Spring 2000*

# 75<sup>th</sup> Anniversary 1925 - 2000

## Join the Celebration!

Happy Birthday to us! Alpha Phi Omega is turning 75 years old. During this year of our Diamond Anniversary, all members will have the opportunity to participate in the celebration through several special events and activities.

Definitely plan to be at Lafayette College in Easton, Pennsylvania, July 14-16 to share a weekend of Leadership, Friendship and Service with Brothers of all ages. There will be tours of the campus, a leadership forum, one or more service projects, and a visit to our birthplace, Brainerd-Hogg Hall. We will have a luncheon banquet, a rededication ceremony, and a gift presentation to the college.

Throughout the year there will be celebrations in our Chapters and at Sectional Conferences. The culmination will be in Philadelphia, December 27-30, at our National Convention. Details about these events will be available to you on our Web site ([www.apo.org](http://www.apo.org)).

So get ready to have a fantastic year as we celebrate the proud heritage and promising future of our great Fraternity. See you in Pennsylvania!



## TORCH & TREFOIL

WinterSpring 2000 Vol. 76 No. 4

### NATIONAL PRESIDENT

Jack A. McKenzie, Clemson, SC

### NATIONAL VICE PRESIDENT

John Wetherington, Englewood, CO

### PROGRAM DIRECTORS

Dave Emery, San Jose, CA  
Bobby M. Hainline, Dearborn, MI  
Maggie Katz, Livonia, MI  
Daniel Rauch, Summit, NJ  
Ed Richter, Franklin, OH  
Teri Sheets, Sacramento, CA

### REGIONAL DIRECTORS

I Cheryl Lynn Smith, Piscataway, NJ  
II Craig Muckle, Manlius, NJ  
III Lyndal Butler, Greensboro, NC  
IV Michael C. Nathan, Tallahassee, FL  
V Barbara R. Anderson, Lancaster, OH  
VI Mark Dearing, Indianapolis, IN  
VII Belton Lim, Houston, TX  
VIII W. Brant Warrick, Fayetteville, AR  
IX Tanya Refshauge, St. Paul, MN  
X Elizabeth Tom, M.D., Spring Creek, NV  
XI David B. Corning, Olympia, WA

### NATIONAL EXECUTIVE DIRECTOR

Patrick W. Burke, CAE, Independence, MO

### NATIONAL LEGAL COUNSEL

Richard F. Schmidt, Kansas City, MO

### NATIONAL ARCHIVIST

Robert C. Barkhurst, W. Dundee, IL

### INTERNATIONAL RELATIONS DIRECTOR

Allen Wong, D.D.S., San Francisco, CA

### PAST PRESIDENTS

Dr. Stan Carpenter, College Station, TX  
E. Ross Forman, Erdenheim, PA  
Tom T. Galt, Spartanburg, SC  
Lawrence L. Hirsch, M.D., Northbrook, IL  
Lorin A. Jurvis, Rockville, MD  
Wilfred M. Krenek, Houston, TX  
Dr. Glen T. Nygreen, Scarsdale, NY  
William S. Roth, Birmingham, AL  
Gerald A. Schroeder, McLean, VA  
Lucius E. Young, LTC, Ret., Spring Valley, FL  
Dr. C.P. Zlatkovich, El Paso, TX

### LIFE MEMBERS

George F. Cahill, CAE, Pittsburgh, PA  
Irwin H. Gerst, Rancho Palos Verdes, CA  
Roger A. Sherwood, CAE, Kansas City, MO  
Warren C. Weidman, Reading, PA

### FOUNDING LIFE MEMBER

Donald L. Terwilliger, Englewood, FL

### EX-OFFICIO MEMBER

James L. Chandler, Irving, TX

## Alpha Phi Omega

NATIONAL SERVICE FRATERNITY

14901 E. 42nd Street • Independence, MO 64055  
816 • 373 • 8667

Fax: 816 • 373 • 5975 Email: executive.director@apo.org  
Web Site www.apo.org



# PRESIDENT'S MESSAGE

BY JACK A. MCKENZIE, NATIONAL PRESIDENT

## Struck by lightning

Not long ago, a lightning strike knocked out e-mail and Internet access at the university where I work. For two days, we were stranded in the emergency lane of the Information Superhighway. As silly as it sounds, during those two days I felt just a little bit isolated and alone. Even though our telephones, fax machines and snail mail were working fine — and even though it was kind of nice not to have 100 e-mail messages waiting to be read each time I logged on — I knew there was a lot of electronic activity and communicating going on “out there” in the Fraternity and the rest of the world that I was missing.

When the fried cables had been replaced and my electronic inbox was overflowing once again, I was relieved and happy, and I had a keener appreciation and understanding of the importance and value of frequent, reliable communication.

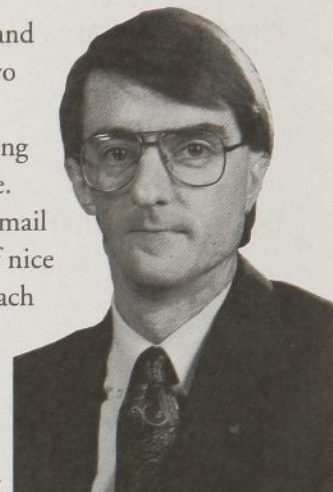
A critical measure of success for us as a Fraternity is how well we communicate. The frequent, reliable flow of information — in all directions — within and among Chapters, between Chapters and Sectional, Regional and National volunteer leaders, and between Chapters and the National Office is fundamental to the Fraternity's ability to operate and progress.

Consider, for instance, this very publication, the *Torch & Trefoil*. When you send in articles and photographs depicting your Leadership, Friendship and Service activities, you are both helping to keep the rest of us informed about what is going on in your part of the Fraternity and providing examples and ideas for similar projects and events that others might want to try.

Less obvious examples of communication are no less significant. Promptly notifying the National Office when your Chapter has new Pledges or Initiates is an important communication responsibility. By sending in the appropriate forms and fees you are enabling the Fraternity to record those students as members of Alpha Phi Omega. Likewise, when your Chapter submits its Annual Active Membership Dues (AAMD) and Charter Reaffirmation materials, that “sends a message” about Alpha Phi Omega's presence and strength on your campus.

So, to all of the frequent and reliable communicators in the Fraternity, I say thank you. By meeting deadlines for forms and fees and responding in a timely manner to requests for information, you help to make the Fraternity better.

And if, from time to time, your lines of communication are disrupted, don't be discouraged. As Ben Franklin proved, even a lightning strike can be an electrifying experience to share!



*Jack*

*P.S.: Speaking of Ben Franklin, I look forward to seeing all of you in Philadelphia in December at our 2000 National Convention and the grand finale of our 75th Anniversary Celebration.*



# L<sub>E</sub>tters to the E<sub>D</sub>itor

Patrick Burke, Alpha Phi Omega National Executive Director and Torch & Trefoil Editor, welcomes your thoughts and comments.

MAIL TO: T&T Editor,  
14901 E. 42nd St., Independence, MO 64055,  
FAX: (816)373-5975, E-MAIL: Executive.Director@apo.org

## Dear E<sub>D</sub>itor:

Our chapter is preparing to submit legislation for the 2000 National Convention. What is the deadline for submitting legislation?

*YiLFS,*

*Cynthia Maxton*

*Delta Mu*

*Pittsburg State University*

*The deadline for the submission of legislation for the 2000 National Convention is September 30, 2000. Submissions by mail must be postmarked by September 29, 2000, and submissions by fax or e-mail must arrive prior to midnight on September 30, 2000, in order to be considered. — Editor*

## Dear E<sub>D</sub>itor:

I know this year we will have a National Convention in Philadelphia, PA. When will alumni be able to register for the Convention and what are the fees going to be?

*Charles "Chuck" Barnett*

*Beta Rho '91*

*University of Arkansas*

*Registration for the National Convention will be available as soon as the registration fee has been approved by the National Board of Directors. Individuals will be able to register on the Fraternity's e-commerce site. Details coming to you soon. — Editor*

## Dear E<sub>D</sub>itor:

In the Winter 1999 issue of the *T&T* the cover story talked about the APO Youth Service Grant. How can our Chapter apply for this grant?

*Katherine Kimbro*

*Alpha Alpha Epsilon '98*

*College of Charleston*

*In September each year all Chapters are mailed the APO Youth Service Grant application. It must be returned to the National Office by November 15 for consideration that year. The chapter grants are announced in the spring. Your next opportunity to apply for this grant will be September 2000. — Editor*

## Dear E<sub>D</sub>itor:

Our Chapter is planning to participate in the 75 for the 75th program (see LS&F on page 8, in the Winter *T&T*). How about a few ideas? What are other Chapters planning?

*Ian Nickerson*

*Mu Pi '97*

*Colorado School of Mines*

*Some Chapters may be trying to conduct 75 service projects in this anniversary program. Alpha Beta Chapter at Penn State is planning to contribute 75 pints of blood in the spring Red Cross Blood Drive on campus. Your Chapter should be creative! — Editor*

Can't visit our **National Office?**

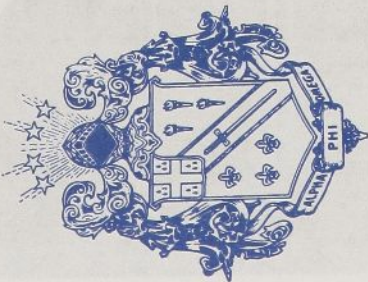
Visit our **National Web Site.**

We're at **[www.apo.org](http://www.apo.org)**





# CHAPTERS



## **EPSILON BETA** Central Michigan University Mount Pleasant, MI

Talk about an interesting project! The Brothers of Epsilon Beta Chapter at Central Michigan University recently completed a "scaffold sit" on that campus. This National Service Week project raised \$253. The Brothers sat on a scaffold for a total of 72 straight hours in shifts of one to four hours each. The beneficiary was Big Brothers/Big Sisters Program of the United Way of Isabella County, in the Mount Pleasant, Michigan, area.



## **LAMBDA ALPHA** East Tennessee State University Johnson City, TN

This past fall Lambda Alpha Chapter participated in one of the East Tennessee State University homecoming events called the Can Food Castle. This event involved teamwork, patience and lots of fun. Each team collected as many canned food items as possible to make a castle. The collected food was donated to local food banks. Lambda Alpha helped collect more than 1,800 cans and took first place in the competition.





...

**DELTA MU**  
**Pittsburg State University**  
**Pittsburg, KS**

How would you like to sleep outside in a box on a cold night? The Brothers of Delta Mu Chapter at Pittsburg State University in Pittsburg, Kansas, did just that this past fall. Members volunteer to stay out overnight in a cardboard box to simulate the feeling of the homeless. Additionally, they solicited pledges and raised money for a local housing organization in Pittsburg called "Housing for All." Members stayed in boxes (on campus) for two nights. During the day they set up a booth with an information board and handed out literature on homelessness in the area and ways to help. The Chapter raised about \$150 and raised awareness in many students concerning the homeless in the community. The Chapter was interviewed by two area TV stations, and was featured in an article in the local newspaper.



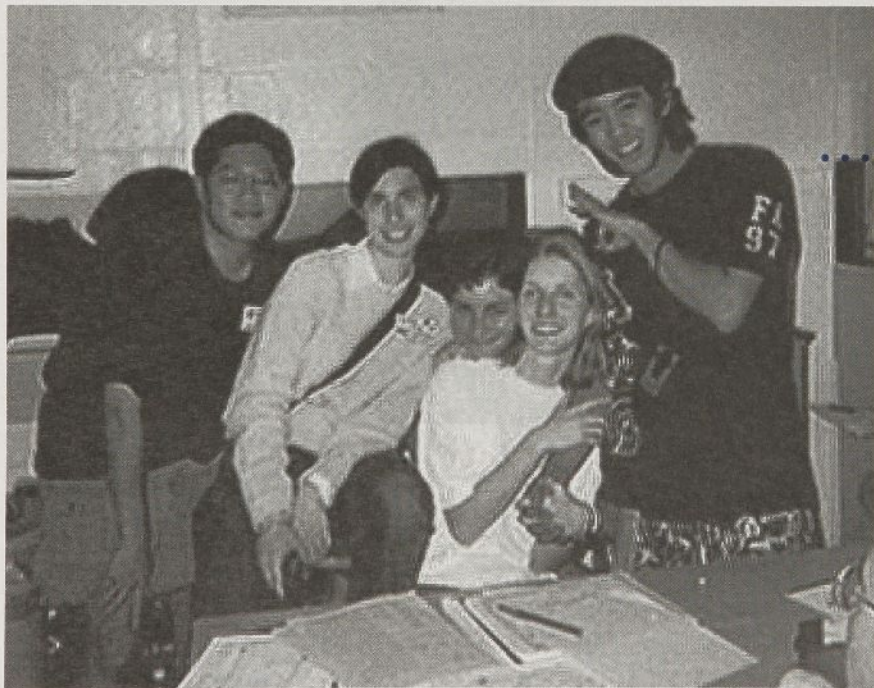
**THETA EPSILON**  
**Illinois State University**  
**Normal, IL**

Theta Epsilon Chapter held its first Boy Scout Merit Badge Seminar this past fall. More than 100 Brothers from other Chapters and most of the Section 48 staff assisted in the project. Almost 400 Scouts attended the event. Each Scout had the opportunity to earn four Merit Badges. The Merit Badge Seminar was a lot of work and a true learning experience for the Chapter. A great time was had by all.



**EPSILON MU**  
**University of Maryland/**  
**College Park**  
**College Park, MD**

This past November, Epsilon Mu Chapter and Region III held a Merit Badge College for local area Scouts during the Regional Conference. More than 40 Brothers participated in this event and taught five Eagle Rank required Merit Badges to the Scouts: Citizenship in the Nation, Citizenship in the World, Emergency Preparedness, Environmental Science, and First Aid. This event required coordination, teamwork and leadership on the part of Region III, and followed the National Service Week theme of "Service to the Leaders of the 20th Century." Epsilon Mu has already been asked to host another Merit Badge College next year.







**RHO PI**  
**University of California**  
**at San Diego**  
**La Jolla, CA**

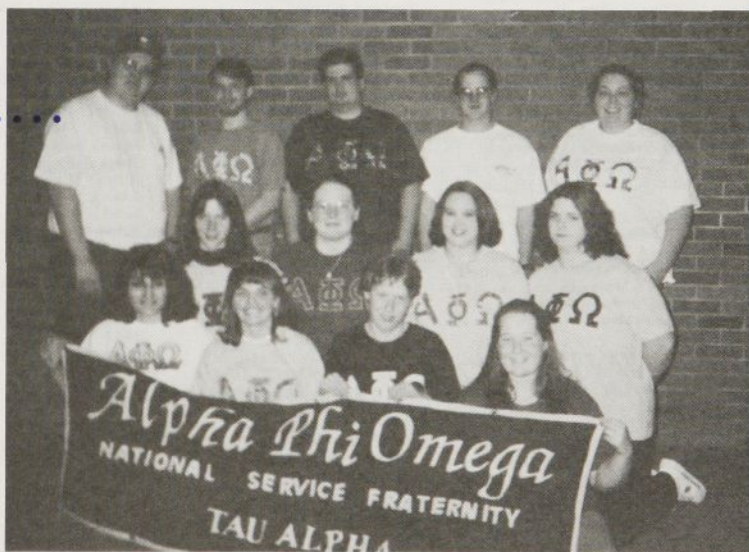
.....

Last fall members of Rho Pi Chapter at the University of California at San Diego got down and dirty in one of their service projects. One of their favorite projects is spending time volunteering for the local community Habitat for Humanity project. Members of the Chapter worked hard all day as part of the "Habitat" team restoring and "spackling" two houses for qualified families. At the end of the day, it was a job well done for the Chapter members and the happy families.

**TAU ALPHA**  
**Davis and Elkins College**  
**Elkins, West Virginia**

.....

The fall semester was very busy for Tau Alpha Chapter. During homecoming and alumni weekend the Chapter set up and decorated for the dance held on campus. They took care of their section of highway which is part of the "Adopt A Highway" program. The fall Pledge Class visited a local nursing home and spent time with the elderly. For Halloween the Chapter gave out candy at the "Safe Trick or Treat" at the Elkins Home Show. And, during semester exams they assembled and delivered care packages bought by the families of the on-campus students.





# 1999 TORCHBEARERS

In this issue of the *Torch & Trefoil*, we recognize our donors. Those Brothers giving a minimum of \$50 are recognized as Torchbearers. Those Brothers giving \$100 are recognized as Silver Torchbearers, those giving \$250 are recognized as Gold Torchbearers, and those giving \$500, \$1,000 and \$2,500 and above are recognized as Silver, Gold and Diamond Founders Circle Members. Donors are listed by Chapter.

All donors are important and necessary to the operation of the Fraternity. They all help ensure that Leadership, Friendship, and Service are kept alive and affordable on our campuses. They invite you to join them in their commitment.

Alpha  
*Lafayette College*  
GOLD TORCHBEARER  
Douglas M. Harris - 20  
John H. Thomas - 15  
SILVER FOUNDERS CIRCLE  
Donald L. Terwilliger - 8

Beta  
*University of Pittsburgh at Pittsburgh*  
TORCHBEARER  
Harold F. Marks - 11  
GOLD TORCHBEARER  
William A. Murphy - 19

Gamma  
*Cornell University*  
TORCHBEARER  
Gerald R. Bertoldo - 14  
Laura Ann Nicoll - 1  
David Barry Singer - 14  
SILVER TORCHBEARER  
Steven Keal Siegart - 5  
GOLD TORCHBEARER  
Richard J. Bojko - 12  
Robert G. Stevens - 5

Delta  
*Auburn University*  
TORCHBEARER  
James J. Goodwin - 9  
L. B. Groover III - 1  
William Blair Harlin - 4  
Laurence G. Hart - 5  
James L. McAlarney - 4  
John D. Puckett - 3  
Marcus C. Stewart - 14  
John T. Strada - 1  
SILVER TORCHBEARER  
Julius Charles McCall - 3  
Glenn A. Mizell - 12  
William A. Watts - 1  
GOLD TORCHBEARER  
Gregory K. Whitfield - 10

Epsilon  
*Truman State University*  
TORCHBEARER  
Packy Alan Huettman - 1  
Karen Kinealy - 5  
Jennifer Roxanne Linderman - 1  
SILVER TORCHBEARER  
Brian & Jennifer Moore - 6

Zeta  
*Stanford University*  
TORCHBEARER  
James A. Cochran - 2  
W. Walter Menninger - 12  
David T. Miura - 14  
Floyd Hiroto Okada - 4  
Gregory Scott Schwartz - 1

Eta  
*Northern Illinois University*  
TORCHBEARER  
Leonore Belle Faulds - 1  
Michael C. Hahn - 4  
Edward J. Kolecke - 5  
Richard N. Wiltberger - 19

Theta  
*University of Virginia*  
TORCHBEARER  
Esther M. Lumsdon - 2  
Thomas G. Poley - 6  
Stephen M. Smith - 10  
SILVER TORCHBEARER  
Rebecca C. Young - 1  
SILVER FOUNDERS CIRCLE  
Kathy E. Carter - 5

Kappa  
*Carnegie Mellon University*  
TORCHBEARER  
Marshall David Abrams - 8  
Susan Lynn Campbell - 1  
Daniel J. Casey - 2  
Randolph J. Finder - 9  
Susan Marie Hayden - 3  
Maureen A. Joyce - 10  
Milton D. Smith - 9

Thomas W. Strong - 1  
Edward V. Weber - 15  
SILVER TORCHBEARER  
Paul W. Kohlbrener - 9  
John R. Koslow - 7  
Charles P. Lawton - 10  
GOLD TORCHBEARER  
Vincent & Lori Bocchino - 7  
Karl E. Voigt - 23

SILVER FOUNDERS CIRCLE  
Timothy P. Clougherty - 5  
GOLD FOUNDERS CIRCLE  
Ross W. Comer - 8  
DIAMOND FOUNDERS CIRCLE  
John Gardiner Myers - 7  
David P. O'Leary - 7

Lambda  
*University of Kansas*  
TORCHBEARER  
Frank J. Gasperich - 19  
Richard H. Umstatt - 3  
SILVER TORCHBEARER  
Weldon L. Sportsman - 10

Mu  
*Indiana University*  
TORCHBEARER  
Hans I. Boerner - 1  
Kevin S. Connelly - 10  
Tricia Leigh Ethier - 2  
Keith J. Karnes - 1  
Matthew L. Krebs - 9  
Karen L. McNeely - 2  
Anne O. Pasquini - 9  
Alan D. Schmetzer - 15  
Robert Christian Scholwinski - 3  
Clark K. Unger - 8  
SILVER TORCHBEARER  
Richard Fulper - 11  
Stephen E. Kirchhoff - 6

Nu  
*Upsala College*  
TORCHBEARER  
Nelson P. Ball - 6

Xi  
*Iowa State University*  
TORCHBEARER  
Lee M. Maddocks - 12  
SILVER TORCHBEARER  
Richard Reade - 15  
Doug White - 20  
Roger A. Winslow - 20

Omicron  
*University of Iowa*  
TORCHBEARER  
Bridget Bambling - 11  
SILVER TORCHBEARER  
Kimberly A. Leo - 1  
Shawn M. McCoy - 1

Pi  
*Kansas State University*  
TORCHBEARER  
John B. Corwin - 17  
Ronald A. Kite - 16  
SILVER TORCHBEARER  
Robert Glenn McKay - 7  
Bruce E. Peters - 10

Rho  
*University of North Carolina at Chapel Hill*  
TORCHBEARER  
Stephen A. Jolly - 19  
SILVER TORCHBEARER  
Wiehrs Lewis Collier - 9  
John Charles Rush - 10

Tau  
*University of Florida*  
TORCHBEARER  
Don Lee Asher - 8  
GOLD TORCHBEARER  
Douglas D. Dankel - 13

Upsilon  
*Univ of Wisconsin-Milwaukee*  
SILVER TORCHBEARER  
Vaughn E. Gehrt - 12  
Thomas A. Wight - 12

Phi  
*Syracuse University*  
TORCHBEARER  
Donald J. Brown - 1  
Leonard A. Ziment - 6  
SILVER TORCHBEARER  
Lawrence D. Hasseler - 14  
GOLD TORCHBEARER  
Franklin E. Powell - 18

Chi  
*University of California at Los Angeles*  
TORCHBEARER  
Charles F. Veden - 15

Omega  
*Drake University*  
TORCHBEARER  
Melinda Ann Westberg - 1

Alpha Alpha  
*University of Illinois at Urbana-Champaign*  
TORCHBEARER  
Susan J. Davenport - 7  
Signor Fink - 8  
Mark D. Fisher - 9  
Louis R. McCreight - 8  
Kristine Celeste McIntosh - 1  
Bruce McPherson - 9  
Anne Ralph Saintey - 17  
SILVER TORCHBEARER  
Ronald C. Berman - 12  
Gerald K. Hill - 4  
Christopher G. Mulcahy - 2  
Rene T. Slezzer Barbier - 13  
GOLD TORCHBEARER  
Howard B. Chodosh - 10  
Peter Joelson - 18

Alpha Beta  
*Pennsylvania State University/University Park Campus*  
TORCHBEARER  
Robert H. Andrews - 1  
Roger C. Burkett - 7  
George W. Fry - 9  
Jeffrey D. Matthews - 1  
Robert L. Ritter - 10  
Rachel S. Rump - 6  
William Douglas Seeman - 2  
Niral Navin Shah - 4  
William N. Wittmer - 13

SILVER TORCHBEARER  
Leon E. App - 13  
David William Schuler - 12  
John N. Varela - 1

Alpha Gamma  
*Purdue University*  
TORCHBEARER  
Linda Ellen Anstett - 5  
John E. Bassett - 8  
Eric D. Bauer - 6  
Thomas R. Brennan - 7  
Alden W. Brooks - 4  
George F. Cahill, CAE - 22  
Dean Den Uyl - 15  
James R. Heinrich - 17  
Thomas W. Jackson - 6  
Janice K. Martin - 1  
Patrick Kent Martin - 1  
Veronica K. M. Moore - 1  
Mindy R. Notestine-Rex - 1  
Patrick L. Pierson - 11  
Phillip C. Wankat - 17

SILVER TORCHBEARER  
Mark A. Cudworth - 9  
Matthew R. Dashiell - 3  
Christopher R. Heim - 5  
Roger S. Young - 9  
GOLD TORCHBEARER  
Gigi Roach - 3  
Karen S. Snapp - 13

GOLD FOUNDERS CIRCLE  
David Overhauser - 5

Alpha Epsilon  
*Louisiana State University & Agricultural and Mechanical College*  
TORCHBEARER  
Reed F. Bilbray - 12  
Michelle M. L. Bowen - 5  
Sharon E. Strahan - 1  
SILVER TORCHBEARER  
"Rudy" Randy Heisser - 8

Alpha Eta  
*University of Missouri-Kansas City*  
TORCHBEARER  
Heather K. Isom Shafe - 2  
Preston M. Russell - 1

Alpha Theta  
*Univ of Nebraska-Omaha*  
TORCHBEARER  
Edward H. Stech - 16

Alpha Iota  
*Ohio State University*  
TORCHBEARER  
Charles S. Kirkpatrick - 2  
Edward J. Richter - 1  
Daniel Roberts - 1  
SILVER TORCHBEARER  
Barbara R. Anderson - 14  
Lee A. Peters - 9  
Ronald E. Pierson - 4  
Michael J. Schrader - 7

Alpha Lambda  
*North Dakota State University*  
TORCHBEARER  
Rebecca Grant - 1

Alpha Mu  
*William Jewell College*  
TORCHBEARER  
John Porter - 9

Alpha Omicron  
*Southern Methodist University*  
TORCHBEARER  
Robert L. Mazanec - 4  
Kimberly R. Rua - 1

Alpha Pi  
*University of Miami*  
TORCHBEARER  
Earl M. Lowenstein - 12  
SILVER TORCHBEARER  
Howard Mesh - 8  
SILVER FOUNDERS CIRCLE  
Julian E. Laughinghouse - 14

Alpha Rho  
*University of Texas at Austin*  
TORCHBEARER  
Ken Andrews - 2  
J. Crozier Brown - 1  
Tom C. Bruns - 1  
Sydney Diana Burton - 3  
Bebe Barbara Carpenter - 4  
Hal E. Hagemier - 13  
William B. Kahlke - 1  
Robert Burton Kamon - 10  
Sidney L. Lawrence - 4  
Roger Ludlow - 3  
Monica Mauricio - 2  
Robert J. Naas - 5  
Glenda R. Rast - 8  
Dan Keith Seilheimer - 1  
Catherine Ann South - 1

SILVER TORCHBEARER  
Abe Frishman - 21  
Paige Megan Hazeltine-Weidner - 3  
Robert A. Lanius - 14  
Sabin W. Marshall - 15  
David N. Moller - 18  
Julie Moore - 11  
GOLD TORCHBEARER  
Charles G. Bowen - 3  
John M. Childs - 17  
George Dacy - 9  
Charles W. Eisemann - 1  
GOLD FOUNDERS CIRCLE  
Wilfred M. Krenek - 16

Alpha Sigma  
*University of Nebraska at Lincoln*  
TORCHBEARER  
James H. Chapman - 16

Alpha Tau  
*Butler University*  
TORCHBEARER  
Paul Robert Meyers - 2  
Duc M. Nguyen - 1

Alpha Phi  
*Washington University*  
TORCHBEARER  
Emily Lynn Engelland - 1  
George R. Kober - 3  
Joshua M. Rosenow - 1  
Sara Tanenbaum - 5  
SILVER TORCHBEARER  
David W. Deitch - 9  
Randall D. Howerton - 1

Alpha Chi  
*Massachusetts Institute of Technology*  
TORCHBEARER  
Ernest C. Brogmus - 10  
Ezra Gavin Erb - 3  
Robert H. Giljohann - 3  
Alan M. Goldberg - 12  
Kevin Mitsuo Iga - 2  
Robert Richard Imsande - 2  
Ellen D. Kranzer - 16  
Amy C. Lister - 5  
Jerold S. Marks - 16  
Kenneth D. McCreery - 1  
William B. Meisler - 1  
William Ward Merrill - 10  
Duffy O'Craven - 14  
Mike Repeta - 8  
Geoffrey G. Rochat - 6  
Ronald S. Rosen - 16  
Kevin D. Stoddard - 4  
John R. Winkelman - 2

SILVER TORCHBEARER  
Alan I. Cohen - 13  
John B. Forrest - 8  
David A. Holt - 19  
Lawrence J. Kaufman - 20  
Elizabeth Francis Wise - 9  
Robert M. Young - 7  
GOLD TORCHBEARER  
John T. Kohl - 9  
SILVER FOUNDERS CIRCLE  
Joseph F. Kuchta - 11

Alpha Psi  
*Lehigh University*  
TORCHBEARER  
Michelle LaRocca Fitzsimmons - 2  
SILVER TORCHBEARER  
David Eliot Leeds - 3  
Paul M. H. Lienhardt - 6  
Kathryn Louise (Snyder) Franklin - 1

Alpha Omega  
*Kirkville College of Osteopathic Medicine*  
GOLD TORCHBEARER  
Lisa K. Lewis - 4

Beta Alpha  
*Wichita State University*  
TORCHBEARER  
Kenneth R. Fortney Jr. - 6

Beta Beta  
*Michigan State University*  
TORCHBEARER  
Lynn Marie Bechtel - 5  
David L. Cox - 1  
Benjamin J. Evans - 1  
Bonnie Hafeman - 1  
Erin Alana Stahl - 8  
SILVER TORCHBEARER  
Arthur George Elliott - 19  
Ernest William Malkewitz - 6

Beta Gamma  
*Central Ymca College*  
TORCHBEARER  
Paul W. Keegan - 1  
David J. Rotter - 17



# 1999 TORCHBEARERS

Beta Zeta  
University of Georgia  
TORCHBEARER  
William H. O'Donnell - 1

Beta Theta  
Univ of Wisconsin-Madison  
TORCHBEARER  
Arthur A. Schwenger - 9

Beta Kappa  
Central Missouri State U  
TORCHBEARER  
R. Wayne Payne - 16

Beta Lambda  
Indiana State University  
TORCHBEARER  
Denise C. Hebert - 1

Beta Mu  
Southwest Missouri State University  
SILVER TORCHBEARER  
Paul J. Monda - 15

Beta Rho  
University of Arkansas  
TORCHBEARER  
Joshua Michael Adams - 1  
Elizabeth Ann Casteel-Weaver - 1

Beta Sigma  
Texas Tech University  
TORCHBEARER  
William C. Bomberger - 10  
Karen Diane Foster - 2  
Rollin H. Hill - 1  
Gary B. Hudspeth - 19  
Glen D. Hunt - 17  
Harry B. Massingill - 11  
L. Joseph Panico - 11  
Mark S. Phillips - 8  
Steven B. Rogers - 11  
SILVER TORCHBEARER  
Mark E. Bounds - 19  
Edward N. David - 5  
Anthony W. Gustwick - 12  
GOLD TORCHBEARER  
Kay Hairgrove Krenck - 13  
SILVER FOUNDERS CIRCLE  
Harley H. Hannsz - 15  
GOLD FOUNDERS CIRCLE  
Miles Allen Cato - 16

Beta Upsilon  
Northwest Missouri State University  
SILVER TORCHBEARER  
Ronald J. King - 9

Beta Psi  
Southeast Missouri State University  
TORCHBEARER  
Lawrence J. Sweda - 2

Gamma Alpha  
University of Washington  
TORCHBEARER  
James R. Dugger - 1  
SILVER TORCHBEARER  
Kari E. Whitney - 1  
DIAMOND FOUNDERS CIRCLE  
David B. Corning - 22

Gamma Beta  
San Jose State University  
TORCHBEARER  
Robert Daly - 15  
Emilio "Mel" S. Gonzales - 6  
SILVER TORCHBEARER  
Richard W. Imperiale - 5

Gamma Gamma  
University of California at Berkeley  
TORCHBEARER  
John B. Adams - 11  
Donald L. Hoskins - 17

Gamma Epsilon  
City College of New York  
TORCHBEARER  
Stanley Blumenthal - 22

Gamma Zeta  
Georgia Institute of Technology  
TORCHBEARER  
William David Dowdy - 2

Gamma Theta  
University of Colorado at Boulder  
TORCHBEARER  
Rhonda Ann Aven-Haggenmiller-8  
Dennis H. Duncan - 7  
Harold V. Eason - 13  
Lee Maurice Lietz - 7  
SILVER TORCHBEARER  
Patrick E. Dougherty - 3  
Charles P. Fisk - 21  
Wayne T. Hutchison - 9  
Robert L. Neher - 21  
GOLD FOUNDERS CIRCLE  
John M. Wetherington - 16

Gamma Iota  
Brooklyn College  
TORCHBEARER  
Arthur M. Schack - 9  
SILVER TORCHBEARER  
Arthur S. Leibowitz - 7  
Howard C. Naphali - 3

Gamma Kappa  
Texas Christian University  
TORCHBEARER  
Masayasu Matsudaira - 1

Gamma Lambda  
Clemson University  
TORCHBEARER  
Dennis Jason Kekas - 1  
Claude R. Smith - 1  
James B. Stevens - 1  
SILVER TORCHBEARER  
Robert B. Carpenter - 18  
GOLD TORCHBEARER  
Douglas G. Ries - 1  
SILVER FOUNDERS CIRCLE  
Jack A. McKenzie - 13  
GOLD FOUNDERS CIRCLE  
Philip H. Prince - 3

Gamma Mu  
University of Evansville  
SILVER FOUNDERS CIRCLE  
Frederick E. Shatara - 21

Gamma Nu  
University of Idaho  
TORCHBEARER  
James R. Soeth - 5  
SILVER TORCHBEARER  
Gary Eugene Strong - 7

Gamma Xi  
Rockhurst University  
TORCHBEARER  
Jennifer L. Corder - 7

Gamma Omicron  
Queens College  
SILVER TORCHBEARER  
Steve Shapoff - 7

Gamma Pi  
University of Michigan/Ann Arbor  
TORCHBEARER  
David G. Hartman - 15  
William E. Hertlein - 17  
Margaret Van Houten - 4  
GOLD TORCHBEARER  
Keith C. Dicker - 1  
Margaret K. Katz - 11  
Susan Beth Meyer - 11

Gamma Rho  
University of North Texas  
TORCHBEARER  
Jeanne Escher-Pickel - 1  
Daniel & Terry-Lynn Faught - 3

Gamma Sigma  
University of Chicago  
TORCHBEARER  
Steven Michael Price - 1

Gamma Phi  
Western Michigan University  
TORCHBEARER  
Richard E. Bradley - 7  
John T. Colburn - 10  
Wade J. Love - 3

Gamma Psi  
Univ of Minnesota-Twin Cities  
TORCHBEARER  
William E. Cook - 11  
Keith W. Davidson - 11  
Allen J. Standish - 14  
John C. Taylor - 2

Delta Beta  
University of Oklahoma  
TORCHBEARER  
James G. Crotty - 7  
James W. Pate - 16  
SILVER TORCHBEARER  
Christopher Duvall - 1

Delta Gamma  
Ohio University  
TORCHBEARER  
Robert J. Beasley - 1  
SILVER TORCHBEARER  
John R. Anderson - 14

Delta Epsilon  
Illinois Inst of Tech  
TORCHBEARER  
Dennis A. Duszak - 5  
James G. Heinlein - 14  
Michael Washington - 7  
SILVER TORCHBEARER  
Ernest W. Grove - 9

Delta Zeta  
University of Pennsylvania  
TORCHBEARER  
Edward R. Kohnstam - 14

Delta Theta  
University of Louisville  
TORCHBEARER  
Charles James Wetherell - 17

Delta Iota  
Mercer University  
TORCHBEARER  
Daniel E. C. Boone - 10  
James E. Miles - 7

Delta Kappa  
Emory University  
TORCHBEARER  
Jennifer R. Beltz-McCamey - 1  
Jodie Alison Kahn - 5

Delta Nu  
Yale University  
TORCHBEARER  
Lorin A. Jurvis - 14

Delta Xi  
Ball State University  
TORCHBEARER  
Michael Robert Armstrong - 1  
Jay A. Ross - 1  
Mark Allen Stratton - 1  
SILVER TORCHBEARER  
Aasha (Blakely) Leahy - 1

Delta Pi  
Trinity University  
TORCHBEARER  
Jenelle D. Bowling - 3  
Natalie A. Bruce - 2  
Danny Ramsey - 5  
Wendy L. Struchen - 5  
Joddie Zoeller - 3  
GOLD TORCHBEARER  
Clark T. Ferrel - 1

Delta Rho  
Rutgers, The State University  
of New Jersey  
TORCHBEARER  
Lisa R. Russell - 5  
Diana M. Droughy - 16  
Betty Rauch - 14 years  
SILVER TORCHBEARER  
Evan LaHuta - 1  
Wayne W. Overti - 14  
SILVER FOUNDERS CIRCLE  
Louis N. Triandafilou - 22

Delta Sigma  
University of Connecticut  
TORCHBEARER  
John H. Driscoll - 3  
Johanna Fleming - 4  
Eugene Harold Staiger - 4

Delta Omega  
University of Houston  
TORCHBEARER  
Justin B. Struby - 5  
SILVER FOUNDERS CIRCLE  
Jimmy Bartle Taylor - 7

Epsilon Beta  
Central Michigan University  
SILVER TORCHBEARER  
Richard E. Lundgren - 1  
Paul F. Torzke - 12

Epsilon Epsilon  
Missouri Valley College  
TORCHBEARER  
Herve Derek Fortin - 8  
David Judson Gray - 13

Epsilon Zeta  
Rensselaer Polytechnic Institute  
TORCHBEARER  
Peter F. Caraccappa - 1  
Gary S. Ide - 11  
Robert D. Kaminsky - 9  
Robert E. Rommel - 1  
Arthur G. Sanderson - 13  
Emilie Saulnier - 7  
Heather Joy Shenkman - 1  
SILVER TORCHBEARER  
Ian G. Bilyj - 3  
Andy Braverman - 10  
Catherine J. Butler - 13  
Kathryn A. Dyer - 1  
George C. Hassa - 5  
Jeffrey R. King - 9  
Joel P. Lord - 3  
Armen E. Mardiguan - 18  
David C. Panagrosso - 3  
David B. Roggenkamp - 8  
Andrew A. Rossbach - 13  
Grace L. Shuman - 14  
Catherine E. Taylor - 2  
GOLD TORCHBEARER  
Paul A. Sicard - 21

SILVER FOUNDERS CIRCLE  
Franklin David Brodsky - 1  
GOLD FOUNDERS CIRCLE  
Michael D. Beyer - 11

Epsilon Theta  
University of North Dakota  
SILVER TORCHBEARER  
Paul Alan Sutherland - 2

Epsilon Lambda  
Michigan Technological University  
TORCHBEARER  
William P. Bowman - 12  
Kathryn A. Doll-Williams - 4  
Wendy Marie Gietek - 5  
Tracy Ann Hines - 1  
Timothy L. Jenkins - 7  
Eric A. Wennersten - 5  
GOLD TORCHBEARER  
Mark E. Ham - 10  
Gary John Lameris - 14

Epsilon Mu  
University of Maryland/College Park  
TORCHBEARER  
Steven Charles Chandler - 11  
Ralph M. Faust - 3  
Donald Louis Flynn - 9  
Walter M. Schwenger - 9  
SILVER TORCHBEARER  
Gerald Juan Berry - 18  
Dennis Michael Gurtz - 14  
Marc Stephen Pearlman - 8  
GOLD TORCHBEARER  
Jon Andrew Gregurich - 4

Epsilon Xi  
Colorado State University  
TORCHBEARER  
Richard L. Burton - 4

Epsilon Pi  
So Illinois Univ-Edwardsville  
SILVER TORCHBEARER  
Richard P. Bragga - 3

Epsilon Sigma  
SUNY/College at Buffalo  
TORCHBEARER  
Thomas A. Kameroski - 5  
Ronald P. Koch - 7  
Max A. Schneider - 3  
SILVER TORCHBEARER  
Floyd M. Seuffert - 10

Epsilon Chi  
Los Angeles City College  
SILVER TORCHBEARER  
Irwin H. Gerst - 19

Epsilon Psi  
Kent State University  
TORCHBEARER  
Henry S. Bunting - 2

Epsilon Omega  
University of Mississippi  
SILVER TORCHBEARER  
Alan K. Bridgewater - 21

Zeta Alpha  
Bradley University  
TORCHBEARER  
Jeffrey Martin Selig - 2  
James L. Wehli - 3  
SILVER TORCHBEARER  
Brian R. White - 16

Zeta Beta  
Virginia Polytechnic Institute  
& State University  
TORCHBEARER  
Stephanie C. Barajas - 2  
Maria L. DaSilva - 8  
Judith C. DeBellis-Thompson - 1  
James H. Gibbs - 3  
Frederick E. Johnston - 15  
Christine D. Lloyd - 1  
Paul V. Louie - 10  
Mark D. Pickett - 3  
Steven E. Wilson - 4  
SILVER TORCHBEARER  
Edward E. Caviness - 3  
Michael Leahy - 6  
Steve D. Price - 1  
Patricia L. Silliman - 2  
John Syne Thrasher - 3  
Jennifer S. Wayne - 2  
GOLD TORCHBEARER  
John H. Barrett - 20  
Patrick W. Burke - 13  
Jerry L. Hulick - 18

Zeta Gamma  
Valparaiso University  
TORCHBEARER  
Jennifer R. Dierking - 2  
Betsy LaMar Franzwa - 1  
Leopold Hedbavny - 17  
Melburn E. Huebner - 9  
Susan Van Teeckelenburgh - 1

SILVER TORCHBEARER  
Allen S. Fornwald - 13  
Vaughan T. Lund - 8

Zeta Delta  
Miami University  
TORCHBEARER  
Raymond J. Fallert - 4  
Kenton L. Fourman - 7  
Tracy L. Jelneck - 2  
Jeremy E. Monat - 1  
Elizabeth Anne Sewall - 4  
SILVER TORCHBEARER  
Kenneth E. McDuffett - 15  
Heath A. White - 9  
Richard S. Young - 11  
David Zubelek - 1

Zeta Theta  
Drexel University  
TORCHBEARER  
George W. Fritze - 1  
Peter J. Grice - 4  
J. Richard Kiefer - 16  
Robert L. Kingman - 15  
Jason P. Marmon - 1  
Niles Martin - 1  
SILVER TORCHBEARER  
David R. Allee - 1  
E. Ross Forman - 18  
William R. Fromm - 11  
Steven David Rellis - 7  
Michael Shellenbarger - 7  
Warren C. Weidman - 11

Zeta Iota  
Temple University  
SILVER TORCHBEARER  
Raymond M. Czarnica - 11  
Kirk J. Thieroff - 16

Zeta Kappa  
Bowling Green State University  
TORCHBEARER  
Timothy B. Feron - 6  
SILVER TORCHBEARER  
Pamela S. Ballard - 1  
Daniel S. Pollak - 2

Zeta Lambda  
University of Toledo  
TORCHBEARER  
Daniel Gerald Hannewald - 2  
Roger W. Schiller - 12

Zeta Mu  
Catholic University of America  
DIAMOND FOUNDERS CIRCLE  
John M. Russell - 15

Zeta Nu  
Southern Illinois University-Carbondale  
TORCHBEARER  
Craig W. D'Ambra - 3  
Richard A. Musgraves - 2  
SILVER TORCHBEARER  
Frank J. Chlebek - 13  
James D. Templeton - 11  
Dean N. Ubik - 9  
SILVER FOUNDERS CIRCLE  
Philip M. Pfeffer - 15

Zeta Omicron  
California Polytechnic State University  
TORCHBEARER  
Michael C. Nathan - 5

Zeta Sigma  
University of Delaware  
TORCHBEARER  
Mark R. Pipes - 1  
Robert L. Rossi - 5  
SILVER TORCHBEARER  
H. B. Ayars - 18  
Joseph Burke Jensen - 1

Zeta Upsilon  
Boston University  
TORCHBEARER  
Arthur H. Foss - 1  
Rita Jo Storey - 1  
SILVER TORCHBEARER  
Thomas O'Donovan - 13

Zeta Phi  
Howard University  
TORCHBEARER  
Donald A. Kiah - 2  
Kenneth E. Spann - 19  
GOLD TORCHBEARER  
Lucius E. Young - 19

Eta Eta  
Arizona State University  
TORCHBEARER  
Lisa E. Bowman - 4  
Lee A. Kline - 3  
Claire Marie Margaret Simeone - 1

Eta Iota  
Millersville University of Pennsylvania  
TORCHBEARER  
Richard Dean Dutcher - 1



# 1999 TORCHBEARERS

- Eta Lambda  
*University of Wisconsin/Eau Claire*  
TORCHBEARER  
Mark S. Larson - 3
- Eta Pi  
*University of Detroit Mercy*  
TORCHBEARER  
Jill Marie Groleau - 1
- Eta Sigma  
*Illinois College*  
TORCHBEARER  
Andrea M. Dulik - 1  
Mathias M. Hollendanner - 9  
SILVER TORCHBEARER  
Philip J. Sallee - 16
- Eta Tau  
*West Texas A&M Univ*  
TORCHBEARER  
David L. McInturff, USMC, Ret.-18  
Mark L. Scruggs - 15
- Eta Phi  
*American University*  
SILVER TORCHBEARER  
David R. Legge - 20
- Eta Psi  
*California State University, Chico*  
TORCHBEARER  
Joe O'Saben - 3
- Theta Zeta  
*University of New Hampshire*  
TORCHBEARER  
Richard Francis Drost - 1  
SILVER TORCHBEARER  
Gail Marie Hinchey - 6
- Theta Iota  
*University of Arizona*  
TORCHBEARER  
Kevin P. Kingsborough - 1
- Theta Mu  
*Vanderbilt University*  
TORCHBEARER  
Christopher D. Heard - 1  
Allyson Page Streeter - 1
- Theta Nu  
*Hamline University*  
TORCHBEARER  
Thomas A. Roust - 14
- Theta Pi  
*University of Indiana*  
TORCHBEARER  
Earl Brown - 7  
Gregory C. Crawford - 8
- Theta Tau  
*University of Texas at Arlington*  
TORCHBEARER  
Ronald A. Welch - 8
- Iota Beta  
*Pacific Lutheran University*  
TORCHBEARER  
Daniel D. Horsfall - 19
- Iota Lambda  
*North Carolina State University*  
TORCHBEARER  
Christopher Alan Albright - 1  
David M. Goddard - 23  
Steven M. Mincey - 1  
Kathy C. Murphy - 4  
Steven T. Price - 13  
William E. Simmons - 5  
Aimee Elizabeth Smith - 1  
SILVER TORCHBEARER  
Alex R. Burkart - 18  
Gary G. Conrad - 8  
Leigh Ellen Highfill - 1  
Joseph H. Meadows - 14  
Susan A. Terry - 8  
SILVER FOUNDERS CIRCLE  
Allan Lyndal Butler - 11
- Iota Omicron  
*Gettysburg College*  
TORCHBEARER  
Jennifer C. Botte - 1  
Michelle L. Maniscalco - 1
- Iota Rho  
*Florida State University*  
TORCHBEARER  
Ed M. Andrews - 7  
Dennis E. Nickle - 8
- Iota Tau  
*Saint Olaf College*  
TORCHBEARER  
Paul C. Anderson - 3  
William J. Brinkman - 14  
SILVER TORCHBEARER  
Christopher D. Peterson - 3
- Iota Upsilon  
*Slippery Rock University of Pennsylvania*  
SILVER TORCHBEARER  
M. Richard Rose - 11
- Iota Phi  
*University of California at Davis*  
TORCHBEARER  
Markus Dinkel - 1  
Joseph Gerard Monteleone - 6  
SILVER TORCHBEARER  
David A. Emery - 12  
Gary A. Vanderpol - 8  
SILVER FOUNDERS CIRCLE  
Elizabeth Tom - 9  
GOLD FOUNDERS CIRCLE  
Kelly H. Williams - 13
- Kappa Theta  
*Wake Forest University*  
TORCHBEARER  
Michael J. Beabout - 1  
Franklin P. Donaldson - 4  
Carla Amy Martin - 1  
Charles E. Webb - 3
- Kappa Xi  
*Xavier Univ of Louisiana*  
TORCHBEARER  
Adam K. Lemieux - 4
- Kappa Omicron  
*University of Massachusetts*  
TORCHBEARER  
Carleton H. Borden - 1  
Craig S. Donais - 6  
Gary Gengo - 5  
Richard J. Keogh - 12  
David S. Mitchell - 10  
SILVER TORCHBEARER  
Christian H. Fredericks - 1
- Kappa Sigma  
*California State University, Sacramento*  
TORCHBEARER  
Eugene D. Melvin - 2  
Todd Jeffrey Rehffuss - 8  
Kevin M. E. Riley - 3  
Idamay Styrsky - 1  
Frank C. Taggart - 10  
SILVER TORCHBEARER  
David L. West - 7
- Kappa Upsilon  
*East Carolina University*  
SILVER TORCHBEARER  
Stephanie Ruth Gardner - 3
- Lambda Alpha  
*East Tennessee State University*  
TORCHBEARER  
Julie Whitfield - 6
- Lambda Kappa  
*Loras College*  
TORCHBEARER  
Charles W. Isenhardt - 10
- Lambda Lambda  
*Shippensburg University of Pennsylvania*  
TORCHBEARER  
Clarence A. Souders - 11
- Lambda Mu  
*California State University, Los Angeles*  
TORCHBEARER  
Jeffrey Schwartz - 10
- Lambda Nu  
*Duke University*  
TORCHBEARER  
Phillippa Jane Miranda - 1  
William F. Owens - 9  
William B. Rugh - 24  
GOLD TORCHBEARER  
Mack T. Ruffin - 5
- Lambda Xi  
*Univ of Texas-Pan American*  
TORCHBEARER  
George L. Finch - 15
- Lambda Omicron  
*West Virginia University*  
TORCHBEARER  
James S. Manning - 15  
Brian P. Westfall - 6  
SILVER TORCHBEARER  
Chip Shepherd - 10  
GOLD TORCHBEARER  
Fred C. Heismeyer - 14
- Lambda Rho  
*Augustana College*  
TORCHBEARER  
Bohdan Dziadyk - 8
- Lambda Tau  
*Salem-Teikyo University*  
TORCHBEARER  
Loi Huu Nguyen - 5
- Lambda Phi  
*Eastern Michigan University*  
TORCHBEARER  
John D. Anderson - 9  
S. Kelly Bancroft - 1  
Christopher A. Gellash - 2  
Scott J. A. Merriets - 1  
SILVER TORCHBEARER  
Lauri E. Bombard - 3
- Mu Alpha  
*Georgetown University*  
TORCHBEARER  
Brandon Jay Avella - 2  
Brian W. Devlin - 6  
Matthew A. Dumas - 1  
Richard M. Pettinger - 10  
John F. Principe - 10  
Donald J. Reilly - 1  
Richard J. K. Stratford - 11  
Pamela K. Wojcicki - 10  
SILVER TORCHBEARER  
Michael R. Hryvniak - 10  
SILVER FOUNDERS CIRCLE  
Gerald A. Schroeder - 10
- Mu Delta  
*University of Great Falls*  
SILVER TORCHBEARER  
William F. Whittitt - 4
- Mu Zeta  
*San Francisco State University*  
TORCHBEARER  
Fernando S. Cecilio - 4  
Maria C. Saguisag-Sid - 1
- Mu Eta  
*Albright College*  
TORCHBEARER  
Paul H. Douglass - 16
- Mu Theta  
*Luther College*  
TORCHBEARER  
Valerie J. Anderson - 6  
Brent D. Engelbert - 6  
Jennifer Catherine Goodell - 1  
Ami Suzanne Hall - 1  
Steve Hall - 3  
SILVER TORCHBEARER  
Tanya Refshauge - 7  
David George Schweizer - 1  
GOLD TORCHBEARER  
Michael K. Musgrave - 11
- Mu Mu  
*Oglethorpe University*  
TORCHBEARER  
Michelle Curtin - 1  
Kenneth P. Davis - 12  
Laura Fowler - 4
- Mu Nu  
*Western Illinois University*  
TORCHBEARER  
Dale R. Jackson - 13  
SILVER TORCHBEARER  
Allen C. Gunter - 5  
John R. Miller - 6
- Mu Omicron  
*Clarkson University*  
TORCHBEARER  
William W. Amidon - 11  
Irving S. Freedman - 2  
James D. Myers - 7  
SILVER TORCHBEARER  
Duane E. Jones - 6  
Lorraine S. Larson - 1  
Craig C. Muckle - 9  
GOLD TORCHBEARER  
Christopher R. Powell - 12
- Mu Pi  
*Colorado School of Mines*  
SILVER TORCHBEARER  
Neil W. Strain - 1
- Mu Sigma  
*South Dakota State University*  
TORCHBEARER  
Glen R. Wollman - 5
- Mu Tau  
*West Virginia University*  
Institute of Technology  
TORCHBEARER  
Wm Michael Caldwell - 6  
Craig R. McGarrath - 9  
Arthur Ray Pierce - 2
- Mu Chi  
*Indiana University of Pennsylvania*  
TORCHBEARER  
Dawn M. Sagar - 3
- Nu Beta  
*Hope College*  
TORCHBEARER  
Timothy W. Estell - 6  
SILVER TORCHBEARER  
Michael Carpenter - 18
- Nu Gamma  
*Southwest Texas State University*  
TORCHBEARER  
Thomas G. Barnhill - 13
- Nu Delta  
*Lebanon Valley College of Pennsylvania*  
TORCHBEARER  
David Vaughn Gartner - 4  
David J. Sekula - 5
- Nu Theta  
*Rowan University*  
TORCHBEARER  
Patrick W. Taggart - 3
- Nu Lambda  
*Monavian College*  
TORCHBEARER  
Walter A. Thurber - 6
- Nu Mu  
*University of Minnesota/Duluth*  
TORCHBEARER  
Scott K. Lakso - 5
- Nu Nu  
*Eastern New Mexico University*  
GOLD TORCHBEARER  
Howard L. Henry - 1  
Sara Jean Henry - 1
- Nu Pi  
*Minnesota State University-Mankato*  
TORCHBEARER  
Donald J. Beckel - 12  
Michael W. Suhr - 5  
SILVER TORCHBEARER  
David L. Farmer - 19
- Nu Rho  
*College of William & Mary*  
TORCHBEARER  
Rebecca Beth Finifter - 2  
William Gregory Lucado - 2  
Amy S. McDiffett - 5  
Sharon Lee Villa - 5
- Nu Tau  
*Calif State Univ-Northridge*  
TORCHBEARER  
Steven E. Paul - 14
- Nu Psi  
*Montclair State University*  
TORCHBEARER  
Edward O. Helwig - 5
- Xi Alpha  
*Muhlenberg College*  
TORCHBEARER  
Jim H. Alderfer - 13  
Colleen Card - 7  
Theresa Anne Geiger - 6  
Ellis Jacobs - 7
- Xi Gamma  
*Adams State College*  
TORCHBEARER  
George Ellwood Hedrick - 15
- Xi Delta  
*Texas A&M University*  
TORCHBEARER  
James C. Busby - 5  
Stan Carpenter - 11  
Sharon L. Cox - 3  
Barry J. Deutsch - 6  
Lauren Beth Faulkner - 2  
Dale Warren Foster - 10  
Patricia R. Garcia-Perez - 3  
Molly Malone Farmer - 5  
SILVER TORCHBEARER  
William E. Bammel - 21  
James M. Fairfield - 11  
Susan F. Griffin - 10  
Belton Lim - 10  
Richard M. Scruggs - 10
- Xi Zeta  
*Rochester Institute of Technology*  
TORCHBEARER  
Scott H. Sims - 7  
David A. Turbide - 4  
SILVER TORCHBEARER  
Ted L. Gross - 5  
Christopher J. Hurley - 10  
Jordan D. Neuringer - 3
- Xi Omicron  
*Tarleton State University*  
TORCHBEARER  
Barry W. Carpenter - 7
- Xi Rho  
*SUNY/College at Oneonta*  
TORCHBEARER  
Harold A. Crawford - 1  
Allison M. Myers - 3  
SILVER TORCHBEARER  
Steven S. Smith - 14
- Xi Sigma  
*Carson-Newman College*  
TORCHBEARER  
William H. Hild - 1
- Xi Psi  
*Western Kentucky University*  
TORCHBEARER  
Donald E. Pierce - 1  
SILVER TORCHBEARER  
Steven G. Adams - 13
- Omicron Zeta  
*California State University-Hayward*  
TORCHBEARER  
Stanley B. Keiser - 1
- Omicron Zeta  
*California State University-Hayward*  
TORCHBEARER  
Michele Stratton - 1  
James Phillip Nicholls III - 5
- Omicron Eta  
*Suffolk University*  
TORCHBEARER  
John P. Percoco - 1
- Omicron Theta  
*Monmouth University*  
TORCHBEARER  
Gerald Novik - 2
- Omicron Iota  
*Worcester Polytechnic Institute*  
TORCHBEARER  
Kimberlee L. Beagle - 3  
Edmund L. Bouchie - 2  
Joseph A. Ferrari - 6  
Marc S. Kazigian - 10  
Maureen A. Mullarkey - 10  
SILVER TORCHBEARER  
Kevin Stuart Davis - 1  
Brian Matthew Lakin - 1
- Omicron Upsilon  
*West Chester University of Pennsylvania*  
SILVER TORCHBEARER  
Janice Warfield Parrack - 1  
GOLD TORCHBEARER  
David Brownstein - 4
- Omicron Phi  
*University of Richmond*  
TORCHBEARER  
Donald F. Luttrell - 2  
Carol M. Pifer - 1
- Pi Alpha  
*Philander Smith College*  
TORCHBEARER  
Arnell Willis - 11
- Pi Beta  
*University of Dubuque*  
TORCHBEARER  
Stephen P. Hein - 1
- Pi Gamma  
*Baldwin-Wallace College*  
SILVER TORCHBEARER  
Dwight Adrian Leedy - 15
- Pi Zeta  
*Tuskegee University*  
TORCHBEARER  
Willie M. Burnett - 3
- Pi Iota  
*Wofford College*  
TORCHBEARER  
Jae Anna Collins - 2
- Pi Omicron  
*Emory & Henry College*  
TORCHBEARER  
Fred P. Entler - 2
- Pi Rho  
*Rider University*  
TORCHBEARER  
Gary Roland Meinhardt - 1
- Pi Tau  
*St. Peter's College (Eves)*  
TORCHBEARER  
Reginald Keene - 6  
SILVER TORCHBEARER  
Aldo P. Antola - 4
- Rho Mu  
*Belmont Abbey College*  
TORCHBEARER  
Timothy M. Lawson - 7  
GOLD TORCHBEARER  
Anthony D. Decristofaro - 9
- Rho Pi  
*University of California at San Diego*  
TORCHBEARER  
Thomas A. Larsen - 9  
Robert A. Pierce - 1
- Sigma Eta  
*Villanova University*  
TORCHBEARER  
Michael J. McArdle - 11



# 1999 TORCHBEARERS

**Sigma Nu**  
*Delaware Valley College*  
**TORCHBEARER**  
 Matthew Fred Schieferstein - 1

**Sigma Xi**  
*University of Maine*  
**SILVER TORCHBEARER**  
 Joel A. Lake - 6  
 Michael J. Mirisola - 8

**Sigma Sigma**  
*University of Illinois at Chicago*  
**TORCHBEARER**  
 Bernard Y. Castillo - 1  
 Amy Kukuczka - 4

**Sigma Upsilon**  
*University of North Carolina at Charlotte*  
**TORCHBEARER**  
 Jeff D. Thomas - 6

**Sigma Chi**  
*Miami-Dade Community College*  
**TORCHBEARER**  
 Gary Joseph LaBelle - 1

**Tau Alpha**  
*Davis & Elkins College*  
**SILVER TORCHBEARER**  
 Kathryn Anne Wilson - 2

**Tau Epsilon**  
*Tennessee Technological University*  
**TORCHBEARER**  
 Marvin G. Blanton - 1  
 Ron Estes - 15  
 James F. Fly - 8

**Tau Lambda**  
*Rose-Hulman Institute of Technology*  
**TORCHBEARER**  
 Christopher Andrews - 1  
 John Howard Havron - 6  
 Matthew Paul Morley - 1  
 Douglas Gene Secrist - 2  
 Larry A. Wood - 11  
 Kevin W. Wyatt - 1

**SILVER TORCHBEARER**  
 Ralph C. Belknap - 7  
 Cary Laxer - 10  
 Brett Jason Snyder - 5

**Tau Mu**  
*University of South Florida*  
**TORCHBEARER**  
 Louise A. Friderici - 7

**SILVER TORCHBEARER**  
 Harvey J. Solomon - 3

**Tau Upsilon**  
*University of Wisconsin-Platteville*  
**TORCHBEARER**  
 Jeffrey C. Ingebritsen - 2

**Tau Omega**  
*Ocean County College*  
**TORCHBEARER**  
 Jay Gold - 2

**Upsilon Alpha**  
*Austin Peay State University*  
**GOLD TORCHBEARER**  
 David E. Chambers - 6

**Upsilon Beta**  
*Saint Francis College*  
**TORCHBEARER**  
 Shannon M. Grove - 1

**Upsilon Delta**  
*Kean College of New Jersey*  
**TORCHBEARER**  
 James L. Pittman - 9

**SILVER TORCHBEARER**  
 David R. Rieger - 8

**Upsilon Nu**  
*University of North Carolina at Wilmington*  
**TORCHBEARER**  
 Kimberly Daly - 13  
 Darren M. England - 11

**Upsilon Phi**  
*Ind Univ-Purdue U at Ft Wayne*  
**GOLD TORCHBEARER**  
 Mark A. Ramser - 17

**Phi Beta**  
*Spartanburg Methodist College*  
**GOLD TORCHBEARER**  
 Cecil Brown Abrams - 14

**Phi Epsilon**  
*Maine Maritime Academy*  
**TORCHBEARER**  
 John T. Lyons - 6  
 Phyllis C. Tenney - 10

**SILVER TORCHBEARER**  
 Celand R. Noyes - 8

**Phi Xi**  
*Austin College*  
**TORCHBEARER**  
 Kathryn Manck - 8

**Chi Gamma**  
*Jamez Madison University*  
**TORCHBEARER**  
 Elbert G. Espanol - 5  
 Rebecca A. Reynolds - 4  
 Anna Lisa Ramos Schneider - 1

**Chi Zeta**  
*University of Tennessee at Martin*  
**TORCHBEARER**  
 William C. Schadrack - 6

**Chi Mu**  
*Henry Ford Community College*  
**GOLD FOUNDERS CIRCLE**  
 Bobby M. Hainline - 19

**Chi Sigma**  
*Allegheny College*  
**TORCHBEARER**  
 Scott Albert Morgan - 1

**SILVER TORCHBEARER**  
 Gilbert Brucken - 1

**Psi Delta**  
*University of Maine at Machias*  
**TORCHBEARER**  
 James R. Kowalsky - 5

**Psi Omega**  
*University of Central Florida*  
**TORCHBEARER**  
 William Dietz - 4  
 Karen Bethany Saffro - 1  
 Michael F. Volpe - 7

**Omega Mu**  
*Clarion University of Pennsylvania*  
**TORCHBEARER**  
 Juris Kelley - 1  
 James L. Sedlak - 2

**SILVER TORCHBEARER**  
 Richard Alan Martin - 9

**Alpha Alpha Epsilon**  
*College of Charleston*  
**TORCHBEARER**  
 Christina Marie Elizabeth Rock - 3  
 Michael Flint Weiss - 1

**SILVER TORCHBEARER**  
 Gary E. Shealy - 4

**Alpha Alpha Xi**  
*University of the Pacific*  
**TORCHBEARER**  
 Lianna C. Wyeth - 2  
 Kimberlee C. Yee - 5

**GOLD TORCHBEARER**  
 Allen Wong - 7  
 Lawrence E. Yates - 1

**Alpha Alpha Pi**  
*Westminster College*  
**TORCHBEARER**  
 Karin P. Goodman - 12

**SILVER FOUNDERS CIRCLE**  
 Sallie Fellague - 14

**Alpha Beta Beta**  
*Saint Bonaventure University*  
**TORCHBEARER**  
 Jennifer Anne O'Reardon - 3  
 Frank J. Squillace - 1

**Alpha Beta Delta**  
*Widener University*  
**TORCHBEARER**  
 Robert J. Carr - 8

**Alpha Beta Epsilon**  
*Univ of Arkansas-Monticello*  
**GOLD TORCHBEARER**  
 Joyce A. Heismeyer - 14

**Alpha Beta Mu**  
*Grove City College*  
**TORCHBEARER**  
 Gregory P. Flinn - 11

**Alpha Beta Xi**  
*SUNY/College at Geneseo*  
**TORCHBEARER**  
 Susan G. Eckhaus - 7  
 Cynthia O. Jones - 4

**GOLD TORCHBEARER**  
 Louis A. Sapirman - 8  
 Nadine Kadell Sapirman - 8

**Alpha Beta Chi**  
*SUNY/College at Plattsburgh*  
**TORCHBEARER**  
 Theresa Lynn Biegen - 1

**Alpha Beta Omega**  
*Old Dominion University*  
**TORCHBEARER**  
 Donald Thomas Howard - 1

**SILVER TORCHBEARER**  
 Paul Raymond Pearson - 1

**Alpha Gamma Alpha**  
*Dickinson College*  
**TORCHBEARER**  
 Mary Beth Horvath - 1  
 Joanne Lipa - 9

**Alpha Gamma Gamma**  
*CUNY/Hunter College*  
**TORCHBEARER**  
 Benjamin Mitchell - 1

**Alpha Gamma Theta**  
*Columbus State Community College*  
**SILVER TORCHBEARER**  
 Thomas A. Duffield - 2

**Alpha Gamma Iota**  
*University of the Sciences in Philadelphia*  
**TORCHBEARER**  
 Erica Christine Kobylinski - 2  
 Dawn Elizabeth Lewis - 1

**SILVER TORCHBEARER**  
 Meredith S. Carter, Pharm. D. - 1  
 Nikki Ann Hoppes - 4

**Alpha Gamma Kappa**  
*Southwestern University*  
**SILVER TORCHBEARER**  
 Madison D. Lowry - 2

**Alpha Gamma Lambda**  
*Albion College*  
**TORCHBEARER**  
 Kimberly A. Parker - 1

**SILVER TORCHBEARER**  
 Louise J. Ruiter - 5

**Alpha Gamma Mu**  
*William Paterson University of New Jersey*  
**TORCHBEARER**  
 Paul J. Bent - 3  
 Barbara M. Smith - 1

**Alpha Gamma Chi**  
*Frostburg State University*  
**TORCHBEARER**  
 Linda J. Finder - 4  
 Aaron W. Hendrickson - 2

**Alpha Delta Nu**  
*Embry-Riddle Aeronautical University*  
**SILVER TORCHBEARER**  
 Jean Marie Falkner - 1

**Alpha Delta Xi**  
*Christopher Newport University*  
**TORCHBEARER**  
 James David Edwards - 2

**Alpha Delta Tau**  
*Nova Southeastern University*  
**TORCHBEARER**  
 Michael Rogero Brown - 1  
 Joel E. Natt - 3  
 Mark Luis Reyes - 1

## Torchbearers make a difference...

We appreciate all donors who made gifts in 1999, and we look forward to their continuing support in 2000. We also welcome and encourage gifts from first time donors and from renewing donors.

The accompanying coupon is provided for your convenience in making a gift to the Fraternity at this time. Just clip out the coupon and mail it with your contribution in an envelope addressed to Alpha Phi Omega, 14901 East 42nd Street, Independence, Mo. 64055. Also, if your employer has a matching-gift program, please take advantage of that opportunity to increase the impact of your contributions to APO. Thank you!

In honor of the 75th Anniversary of the Fraternity I would like to make a contribution to the annual development campaign. My check is enclosed for the following amount:

☐ \$75      ☐ \$100      ☐ \$150      ☐ \$300  
☐ \$500      ☐ \$1000      ☐ \$2500      ☐ Other

Please use my ☐ Mastercard ☐ Visa ☐ Discover card.

Card # \_\_\_\_\_

Exp. date \_\_\_\_/\_\_\_\_/\_\_\_\_

Print name \_\_\_\_\_

Sign name \_\_\_\_\_



**1925-1950** — This is the first of three articles that will remind us of our many years of accomplishments thus far and leave a record of them for the thousands of Brothers who will be here for our 100th or 150th and other future anniversaries. This is a good time to reflect on all that has gone before us and all that will strengthen those who come after us.

I always envision a cold, dark, rainy or snowy night when our Fraternity was formed on the Lafayette campus in Easton, Pennsylvania. But actually it was in the afternoon, and may have been cold but wasn't raining, snowing or blowing. It was just a regular Wednesday afternoon, December 16, 1925, on the second floor of Brainerd Hall when Alpha Chapter was born. The dream of Frank Reed Horton became a reality. There were 14 founders, and each played a part in bringing our Fraternity to life. Their endeavors set us in motion.

Calvin Coolidge was President of the United States. It was the age of the Flapper and Prohibition. Our national hero was an airplane pilot named Charles A. Lindbergh. In our early years we built very few new chapters. Beta, Gamma, Delta and Epsilon were chartered in 1927. Zeta and Eta chartered in 1928. As we moved into 1929 some folks were saying the stock market was getting too high. Our "stock" was also growing and by the first of October that

year we had already chartered Theta, Iota, Kappa, and Lambda. Then on October 24, 1929, the stock market crashed. Still our momentum carried on, and in December we chartered Mu and Nu Chapters.

Even though our country was in an economic tailspin in 1930, our Fraternity chartered four additional chapters: Xi, Omicron, Pi and Rho. In the first six years of our existence 17 chapters had been chartered. We had grown from coast to coast; we were truly a national organization.

Then on March 2, 1931, an event occurred that would really change the fraternity's growth, outlook, and scope. It was the election of — H. Roe Bartle. Known nationwide as the "Chief," Bartle will always be known as the most important figure in the history of the Fraternity after Frank Reed Horton. Bartle had been responsible for building six of the first 18 chapters. During his tenure as Supreme Grand Master and then National President, he expanded the Fraternity from 18 chapters in 1931 to 109 chapters

through 1946.

Under the "Chief's" leadership the National Office was moved to Kansas City, Missouri, in 1931. According to our National Archivist, Robert C. Barkhurst, "it was a move from the trunk of Frank Reed Horton's car to any available desk in the offices of the Chief, who at that time was the Scout Executive for the Kansas City, Missouri, Scout Council." Our relationship with the Boy Scouts of America began through the efforts of Frank Reed Horton, and was greatly strengthened through the "Chief's" contacts with the National BSA Council. Our national publication, the *Lightbearer*, became the *Torch & Trefoil*, and the Fraternity hired its first executive, Sidney B. North, known then as the National Secretary.

By 1937 personal visits to chapters by leaders of the Fraternity had the effect of uniting the Chapters and establishing a more unified national organization. In 1939, because of the continuing growth, the Fraternity began the process of

# OUR FIRST 25 YEARS

## 75th Anniversary Countdown

by Wilfred M. Krenek,  
75th Anniversary Chair



developing a regional level of leadership to create closer contact with our Chapters.

With the 1940s came World War II. As young men joined the Armed Forces, attendance at colleges decreased and so did membership in the Fraternity. Seventy-two percent of our membership was involved in the war effort. Many of our chapters shut down all activity. It was estimated that more than 5,000 Brothers served in the Armed Forces, and 169 lost their lives in the line of duty. A review of the *Torch & Trefoil* of those years reflected much patriotism. Many Brothers in uniform around the world sent letters to the Editor, published under the banner "Barracks Banter." Those wounded or killed in action had their stories reported, and there was a cartoon strip and a character named "Spizzer" who corresponded from all parts of the globe, keeping the APO spirit alive and well in all his written thoughts. And month after month during that time the "Chief" produced speeches and "Letters from the President" with inspiring and heartfelt messages.

In 1946, after 16 years of dedicated service and having brought about great change and prosperity to the Fraternity, the "Chief" was ready

to relinquish the presidency to new leadership. As a parting gift the active members dedicated their fall pledges to the "Chief." This was the first fall pledge class namesake honor given. In his lifetime the "Chief" would receive the honor three times.

In the late 40s leading up to our 25th Anniversary, the Fraternity was a flurry of activity. It was a time of growth. From the National Convention of 1946 to the National Convention of 1950, the Fraternity added another 118 Chapters to the rolls. By the time we reached our 25th Anniversary, under the leadership of National President Dean Arno "Shorty" Nowotny (1946-1950), the Fraternity had grown to a total of 227 Chapters with more than 7,000 members and alumni.

The election of Dean Nowotny as our National President in 1946 was a clear sign of the importance of the college administrator to our Fraternity. He was Dean of Student Life at the University of Texas and that same year had been elected as the president of the

National Association of Deans and Advisors of Men. The importance of having college administrators and college staff members as Chapter Advisors received prominent recognition during "Shorty's" term of office.

By the late 40s the Fraternity had begun holding the biennial National Convention, Sectional Conferences and State Conclaves. These meetings served to strengthen the Fraternity nationally, and to build a close network for better chapter relations within each state. Additionally, in March of 1950 the first organization of Alpha Phi Omega outside the United States was established in the Philippines. 1950 was our Silver Anniversary year and a great time for Alpha Phi Omega. We were truly a National Service Fraternity and ready to move forward in Leadership, Friendship and Service.

## Next Issue — 1950-1975

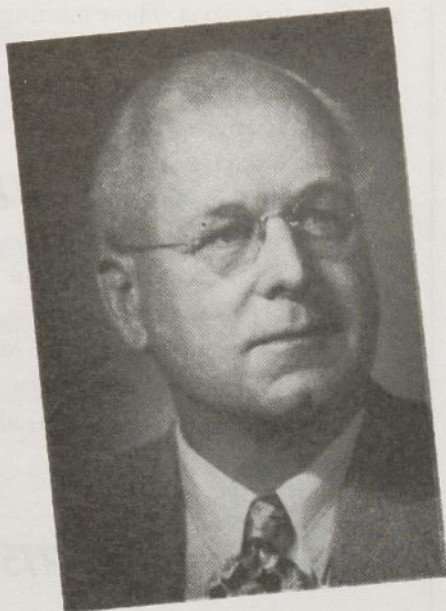


75<sup>th</sup>  
Anniversary  
1925-2000



## Our Presidents

THREE BROTHERS HAVE SERVED AS NATIONAL PRESIDENT  
OF ALPHA PHI OMEGA



**Frank R. Horton**

*Founder  
of the Fraternity*

Writes Brother Horton: "As a Junior at college, I noticed that where I was living at the SAE house, the students who were former Scouts stood out for the right in campus life. I thought there should be an organization to develop a bond among students who were former Scouts, to give them opportunity for leadership and all together to render service. I believed the Scout ideals should not be thrown aside as child's play, but should be maintained as a man's standard.

"My thoughts went beyond the campus. I knew that college graduates became national and international leaders, and believed that the Scout ideals would carry over into their civic life."

Thus, with this philosophy Alpha Phi Omega was originated. Brother Horton's belief came true, and Alpha Phi Omega has made rapid growth.

Further information about Frank's early leadership in developing the fraternity is on page three of this issue. He served five years as National President and presided at the first convention.

Today, Brother Frank continues thorough interest in community service and in Alpha Phi Omega. He is associated with the Ingersoll-Rand Company, Phillipsburg, N. J.



**Dr. H. Roe Bartle**

*Builder  
to National Scope*

Elected as National President at the convention in 1931, Roe Bartle of Iota Chapter immediately launched vigorous growth and development which was destined to advance Alpha Phi Omega to nationwide scope. With eighteen chapters in the fraternity at the time of his installation, Dr. Bartle began spreading the fraternity to more campuses and increasing the values of the organization.

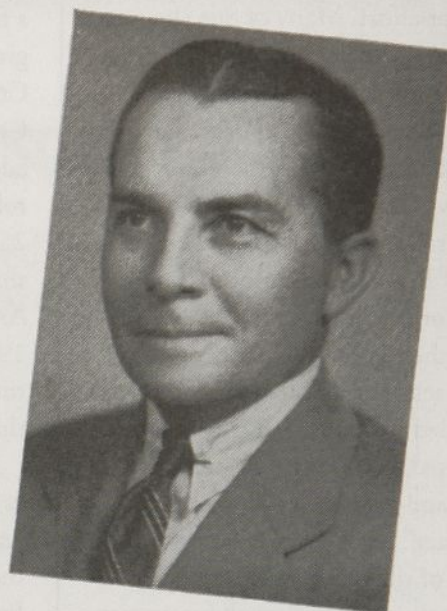
Under Brother Roe's leadership an application to the National Council of the Boy Scouts of America for official recognition was given approval, giving stimulus to fine cooperation from the Scout field.

The service program really came into prominence under Dr. Bartle's dynamic leadership, and chapter activities advanced from minor services to accomplishments of real magnitude.

Traveling widely in the interest of the fraternity, Dr. Bartle personally visited many colleges and universities in building Alpha Phi Omega to the outstanding organization we know today. He gave generously of his time and money in developing a strong and worthy organization.

Brother Roe served sixteen great years as National President which were concluded when he asked the convention delegates in 1946 to elect a new president. He continues as a member of the National Executive Board and maintains keen interest in APO.

He is President of Missouri Valley College and Scout Chief of the Kansas City Area Council.



**Dean Arno Nowotny**

*Leader  
in Vast Expansion*

President "Shorty," as he is affectionately known, has given masterful leadership in Alpha Phi Omega in the years following World War II. Rapid growth in chapters, membership, and resultant projects has characterized his presidency.

In chapters, the fraternity has grown to 227 campuses, with seven additional petitioning groups and many preparatory groups in process.

In membership, the total number of actives stood at an all-time high before the Korean War began, and pledging this Fall has continued briskly.

In service projects, a peak of 412 different kinds of projects were reported by the chapters last year, a mark of achievement in every chapter and collectively a symbol of Dean Nowotny's own devotion to the ideal of the Scout Good Turn.

The State Chairmanship plan has been brought to nationwide importance under Brother Nowotny's direction. Expansion of national office facilities has been handled under President Nowotny's guidance as a means of serving a growing organization.

Brother Nowotny is Dean of Student Life at the University of Texas, and is closely affiliated with Alpha Rho Chapter as faculty advisor.



# Chapter Program Workshops



*Participants at the CPW at Oglethorpe University in Atlanta, Georgia.*

One of the most important educational tools in our Fraternity today — and the most readily available and economic to our members — is the Chapter Program Workshop (CPW). This is no exaggeration. During the summer months we conduct nine of the workshops, one in each Region except Regions X and XI. In those two Regions a CPW is held during the school year.



*Participants at the CPW at Oklahoma State University in Stillwater, Oklahoma.*

The CPW is a prime opportunity for members who are running or have been elected to serve their Chapters to develop and improve their leadership skills.

For information to help your Chapter remain healthy, and to learn what is expected of you as a leader in the Fraternity, attending this workshop is an invaluable opportunity. The CPW is also economical for our Members. The fee to attend is just \$45. This includes housing and food for the weekend. In the next few months specific locations will be advertised in the Chapter Bulletin and the *Torch & Trefoil*. Make plans to attend one of these great workshops this coming summer.



# WHO, what, WHEN & Where?

## ALPHA PHI OMEGA'S CALENDAR OF EVENTS

### MARCH 3-5

Section 68 Conference  
Host: Iota Alpha Chapter  
University of Tennessee  
Knoxville, TN

### MARCH 4

Section 1 Conference  
Host: Zeta Omicron Chapter  
California Polytechnic State  
University  
San Luis Obispo, CA

Section 91-92 Conference  
Host: Zeta Theta Chapter  
Drexel University  
Philadelphia, PA

### MARCH 11

Section 1 Conference  
Host: Zeta Omicron Chapter  
California Polytechnic State  
University-San Luis Obispo  
San Luis Obispo, CA

### MARCH 17-19

Section 43/44 Conference  
Host: Sigma Pi Chapter  
Prairie View A&M University  
Prairie View, TX

Section 54 Conference  
Host: Gamma Phi Chapter  
Western Michigan University  
Kalamazoo, MI

Section 62/64 Conference  
Host: Beta Chapter  
University of Pittsburgh  
Pittsburgh, PA

### MARCH 24-26

Section 52 Conference  
Host: Alpha Gamma Chapter  
Purdue University  
W. Lafayette, IN

Section 74 Conference  
Host: Alpha Gamma Rho Chapter  
Florida Institute of Technology  
Melbourne, FL

### MARCH 25

Section 79 Conference  
Host: Sigma Rho Chapter  
Elon College  
Elon College, NC

Section 90 Conference  
Host: Alpha Beta Chapter  
Pennsylvania State University  
State College, PA

Section 97 Conference  
Host: Beta Iota Chapter  
New York University  
New York, NY

### MARCH 31 - APRIL 2

Section 67 Conference  
Host: Delta Theta Chapter  
University of Louisville  
Louisville, KY

Section 81 Conference  
Host: Alpha Beta Zeta Chapter  
Radford University  
Radford, VA

Section 94/96 Conclave  
Host: Omicron Iota Chapter  
Worcester Polytechnic Institute  
Worcester, MA

### APRIL

Section 45 Conference  
Host: Chi Nu Chapter  
Grambling State University  
Ruston, LA

### APRIL 7-9

Section 2 Conference  
Host: Theta Iota Chapter  
University of Arizona  
Tucson, AZ

Section 41 Conference  
Host: Alpha Epsilon Zeta Chapter  
University of Texas  
Dallas, TX

Section 48 Conference  
Host: Eta Sigma Chapter  
Illinois College  
Jacksonville, IL

Section 49 Conference  
Host: Beta Psi Chapter  
Southeast Missouri State  
University  
Cape Girardeau, MO

Section 72 Conference  
Host: Nu Epsilon Chapter  
Georgia Southern University  
Statesboro, GA

### DECEMBER 2000



National Convention

**moving?**

**new address**

Name

Address

City

State

ZIP

MAIL TO: Alpha Phi Omega  
14901 E. 42nd Street • Independence, MO 64055

Alpha Phi Omega  
14901 E. 42nd Street  
Independence, MO 64055

Non-profit Org.  
U.S. Postage

**PAID**

SHAWNEE MISSION, KS  
Permit No. 366